



e. Determine direct and indirect cost sensitivities to tasking for each collector.

f. Establish cost versus tasking curves for each collector.

g. Determine phasing out costs.

25X1

2. [redacted] advised that JCS had established four states of conflict/tension: Cold War, General War, Guerrilla Warfare and Limited War; and suggested that the Working Group may want to adopt these terms for values in the Group's transform. After a general discussion of their definitions, it was decided to use three terms (General War, Limited War, and Cold War) in the transform. At this point, the Chairman suggested reducing the number of interest levels (National, Theater and Local) from three to two (National and Theater), as the observables for the Theater and Local level would appear to have approximately the same values.

25X1

[redacted] and Lt. Colonel Parrish stated that they felt cutting the number of states below twenty seven would reduce the effectiveness of the transform. The Chairman concurred in maintaining twenty seven states for the present, and continuing the deliberation on this number after the intelligence fields are more completely structured.

[redacted]

Executive Secretary  
ELINT Evaluation Working  
Group

25X

Attachment:  
As Stated

Distribution:

1 - Each Member

25X1

10 [redacted]  
1 - [redacted]  
1 - [redacted]

25X1

1 - [redacted] SIGINT Committee Secretariat

25X1

1 - [redacted] Chrono

2 - DD/S&T Registry

25X1

[redacted] 9 Feb. 68

SECRET

Approved For Release 2004/02/11 : CIA-RDP71R00510A000300020032-6

ELINT SYSTEMS COSTS  
-- CONCEPTS AND STATUS

OBJECTIVE -- To develop Elint systems costs that are compatible with performance evaluation methodology.

SECRET

Approved For Release 2004/02/11 : CIA-RDP71R00510A000300020032-6

PERFORMANCE Vs. MISSION AND TARGET

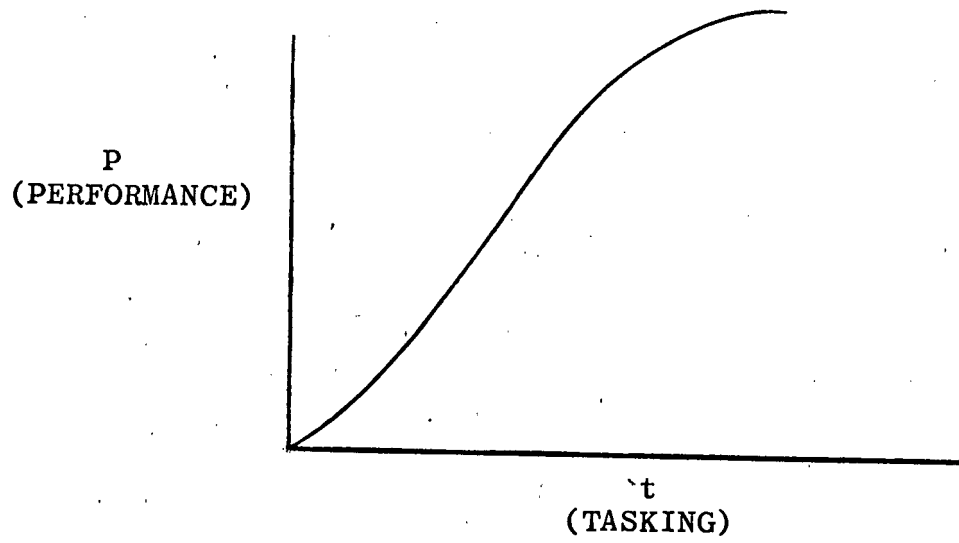
TARGET	MISSION		
	STRATEGIC	TECHNICAL	OPERATIONAL
National			
Theatre			
Local			

COST Vs. MISSION AND TARGET

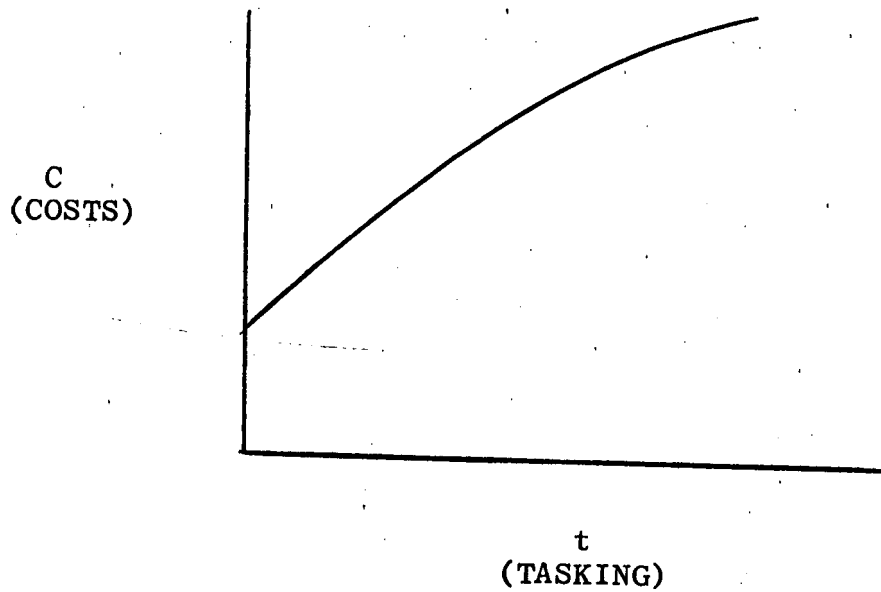
TARGET	MISSION		
	STRATEGIC	TECHNICAL	OPERATIONAL
National			
Theatre			
Local			

SECRET

### COLLECTOR CAPABILITY Vs. TASKING



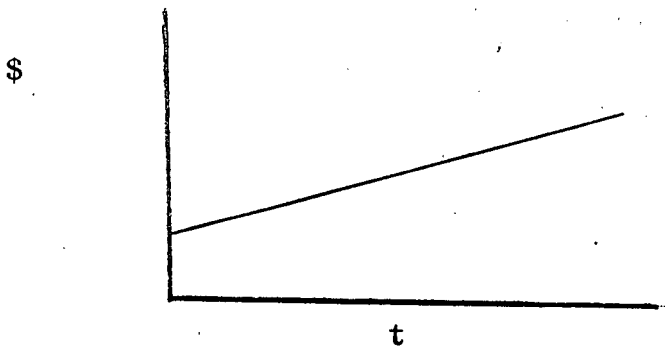
### COLLECTION COSTS Vs. TASKING



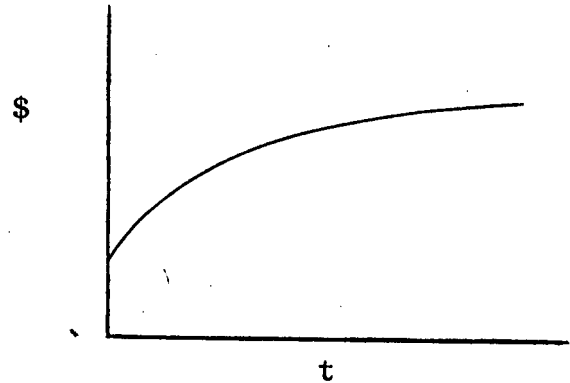
SECRET

DIRECT AND INDIRECT COSTS Vs. TASKING

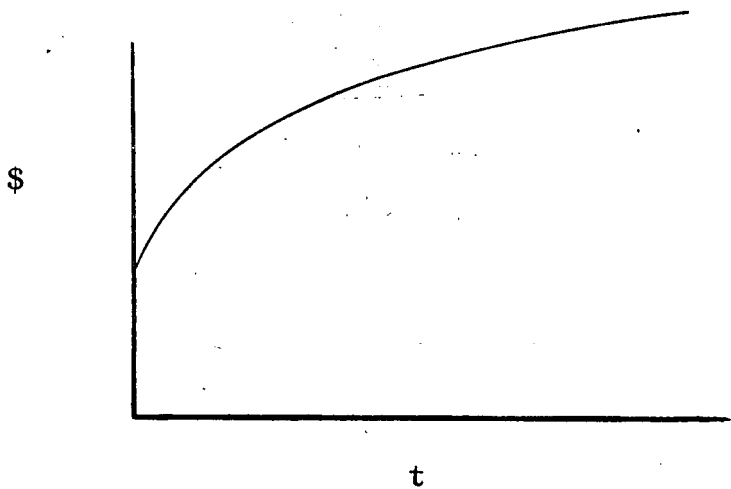
DIRECT



INDIRECT



DIRECT AND INDIRECT (Including Phase Out)



SECRET

25X1

Approved For Release 2004/02/11 : CIA-RDP71R00510A000300020032-6

Next 2 Page(s) In Document Exempt

Approved For Release 2004/02/11 : CIA-RDP71R00510A000300020032-6

TARGET ORIENTED DISPLAY COSTS

A. SUMMARY COSTS

INTELLIGENCE FUNCTIONS

RESOURCES

B. GEOPOLITICAL TARGET AREAS

C. SUBJECT TARGETS

D. MILITARY TARGETS

STRATEGIC FORCES

OFFENSIVE

DEFENSIVE

GENERAL PURPOSE FORCES

AIR

GROUND

NAVAL

MILITARY

COMMAND AND CONTROL

SPECIAL WEAPONS

SPACE PROGRAMS

UNDISTRIBUTED



### PROBLEMS

1. Identify collection and processing entities.
2. Determine missions performed by each entity.
3. Determine direct costs and positions for each mission.
4. Determine indirect costs and positions for each mission.
5. Determine direct and indirect cost sensitivities to tasking for each collector.
6. Establish cost vs. tasking curves for each collector.
7. Determine phase out costs.