

★  
AN 10-10CB-27

ILLUSTRATED PARTS BREAKDOWN

**GUN CAMERA**

TYPE N-9

( BELL & HOWELL )

PUBLISHED UNDER AUTHORITY OF THE SECRETARY OF THE AIR FORCE  
AND THE CHIEF OF THE BUREAU OF AERONAUTICS

★  
AIR FORCE-OC-7M-10-7-54

20 MAY 1954

**AN 10-10CB-27**

Reproduction for non-military use of the information or illustrations contained in this publication is not permitted without specific approval of the issuing service (BuAer or USAF). The policy for use of Classified Publications is established for the Air Force in AFR 205-1 and for the Navy in Navy Regulations, Article 1509.

**LIST OF REVISED PAGES ISSUED**

**INSERT LATEST REVISED PAGES. DESTROY SUPERSEDED PAGES.**

**NOTE:** The portion of the text affected by the current revision is indicated by a vertical line in the outer margins of the page.

\* The asterisk indicates pages revised, added or deleted by the current revision.

**ADDITIONAL COPIES OF THIS PUBLICATION MAY BE OBTAINED AS FOLLOWS:**

**USAF ACTIVITIES.**—In accordance with Technical Order No. 00-5-2.  
**NAVAL ACTIVITIES.**—Use Publications and Forms Order Blank (NavAer 2126) and submit to the nearest publications supply point listed below: NAS, Alameda, Calif.; NAS, Jacksonville, Fla.; NAS, Norfolk, Va.; NAS, San Diego, Calif.; NAS, Seattle, Wash.; NASD, ASO, Guam; NASD, Philadelphia, Pa.  
For listing of available publications see Naval Aeronautic Publications Index (NavAer 00-500).

**USAF**

TABLE OF CONTENTS

Section	Page
I. INTRODUCTION . . . . .	1
II. GROUP ASSEMBLY PARTS LIST . . . . .	2
Components of Type N-9 Gun Camera . . . . .	2
(Sheet 1 of 4) Exploded View of Motion Picture Camera . . . . .	3
(Sheet 2 of 4) Exploded View of Motion Picture Camera . . . . .	4
(Sheet 3 of 4) Exploded View of Motion Picture Camera . . . . .	6
(Sheet 4 of 4) Exploded View of Motion Picture Camera . . . . .	8
Exploded View of Speed Changer Assembly . . . . .	10
Exploded View of Remote Shutter Control Assembly . . . . .	12
Exploded View of Over-Run Assembly . . . . .	13
(Sheet 1 of 2) Exploded View of Magazine Assembly . . . . .	14
(Sheet 2 of 2) Exploded View of Magazine Assembly . . . . .	16
Exploded View of Remote Shutter Control Box Assembly . . . . .	18
III. NUMERICAL INDEX . . . . .	19

SECTION I  
INTRODUCTION

1-1. GENERAL.

1-2. This Illustrated Parts Breakdown lists and illustrates the procurable assemblies and detail parts of the Type N-9 Gun Camera, manufactured by the Bell & Howell Company, Chicago, Illinois, under their model designation Design 917-A (See Figure 1).

1-3. The Illustrated Parts Breakdown is divided into three sections: an Introduction (Section I), a Group Assembly Parts List (Section II) and a Numerical Index (Section III).

1-4. GROUP ASSEMBLY PARTS LIST.

1-5. Figure 1 serves as a visual index for the breakdown of the complete camera equipment. The corresponding parts listing for this illustration makes reference to the illustration, or illustrations, where all procurable parts of each major component or assembly are shown in exploded view form.

1-6. When the complexity of a component has made it impractical to explode its subassemblies within the illustration of the component, those subassemblies have been referenced to following illustrations where their detail parts are shown in exploded view form. For example, the description for item 8 of Figure 4 reads as follows: "Speed Changer Assembly (See Fig-

ure 6 for detail parts)". In like fashion, each assembly and subassembly exploded within the parts catalog is referenced to a previous illustration for its next higher assembly (N.H.A.) and/or attaching parts. For example, the description for the first listed item of Figure 6 reads as follows: "Speed Changer Assembly (see Figure 4-8 for detail and attaching parts)".

1-7. The "Part Number" column lists the prime contractor's, vendor's or government standard part number of each item in the list, except for commercially obtainable parts which are designated by "COMM". Vendor-supplied parts are identified by the vendor's part number, with the vendor's code symbol (paragraph 1-10) following the description of the part. When commercial, government standard or vendor-supplied parts are listed, the prime contractor's part/drawing number follows the description of the part.

1-8. The abbreviation N.P.N. in the "Part Number" column indicates that "no part number" has been assigned to the particular subassembly in question, and the symbol NP in the "Units per Assembly" column indicates that such subassemblies are "not procurable". When necessary to replace non-procurable subassemblies because of damage or excessive wear, the next higher procurable subassembly or assembly must be requisitioned as a replacement.

Sections I - II

AN 10-10CB-27

## 1-9. HOW TO USE THE PARTS LIST.

a. When the part number is known;

(1) Locate the part number in Section III, Numerical Index, and note the figure and index number of that part.

(2) Locate the illustration in Section II, Group Assembly Parts List.

(3) Use the index number to locate the part in question on the exploded view illustration.

b. When the part number is not known;

(1) Use Figure 1 to identify the major component into which the part in question is assembled, and refer to the parts listing for Figure 1 to find the exploded view, or views, of the major component.

(2) Locate the part in question on the applicable exploded view, either by its physical appearance or by its relation to other known parts of the assembly, and note the index number of the part.

(3) Refer to the index number in the corresponding parts listing for the illustration to ascertain the part number and description of the part.

## 1-10. VENDOR CODE SYMBOLS.

Code	Vendor	Address
AMP	American Phenolic Corp.	Chicago, Ill.
EN	Elastic Stop Nut Corp.	Union, N. J.
GUC	Gudeman Company	Chicago, Ill.
IRRC	Industrial Retaining Ring Co.	Mount Vernon, N. Y.
MCS	Micro Switch Division	Freeport, Ill.
MTP	Miniature Precision Brgs.	Keene, N. H.
ND	New Departure Division	Bristol, Conn.
SPTD	Spencer Thermostat Div.	Attleboro, Mass.
WKI	Waldes-Koh-I-Noor Inc.	Long Island City, N. Y.
ZE	Zierick Mfg. Corp.	New Rochelle, N. Y.

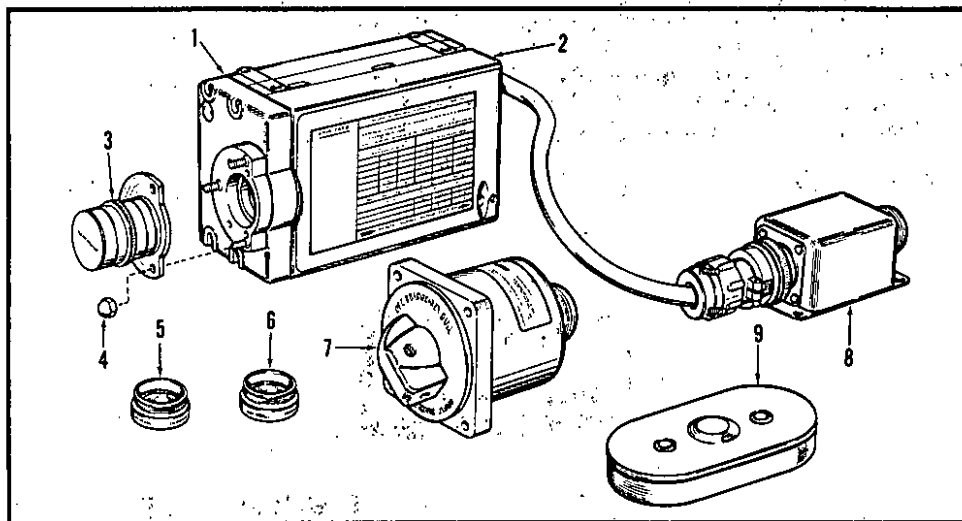


Figure 1. Components of Type N-9 Gun Camera

## SECTION II

## GROUP ASSEMBLY PARTS LIST.

FIG. & INDEX NO.	PART NO.	DESCRIPTION	UNITS PER ASSY.	USABLE ON CODE
1-	DES. 917-A	CAMERA, gun motion picture, 16-mm, Type N-9	1	
1-1	091940	CAMERA ASSEMBLY, motion picture (see Figures 2 through 5 for detail parts)	1	
-2	091920	MAGAZINE ASSEMBLY (see Figures 9 and 10 for detail parts)	1	
-3	091983	LENS ASSEMBLY (interchangeable with B & H 99621)	1	
-4	22-K2-82	NUT, hex cap, No. 8-32 (EN) (99823)	3	
-5	091984	FILTER ASSEMBLY, lens, dark yellow	1	
-6	091985	FILTER ASSEMBLY, lens, colorless	1	
-7	99863	FILTER, radio noise	1	
-8	091963	BOX ASSEMBLY, remote shutter control (see Figure 11 for detail parts)	1	
-9	091601	CARTRIDGE ASSEMBLY, film, 16-mm	1	

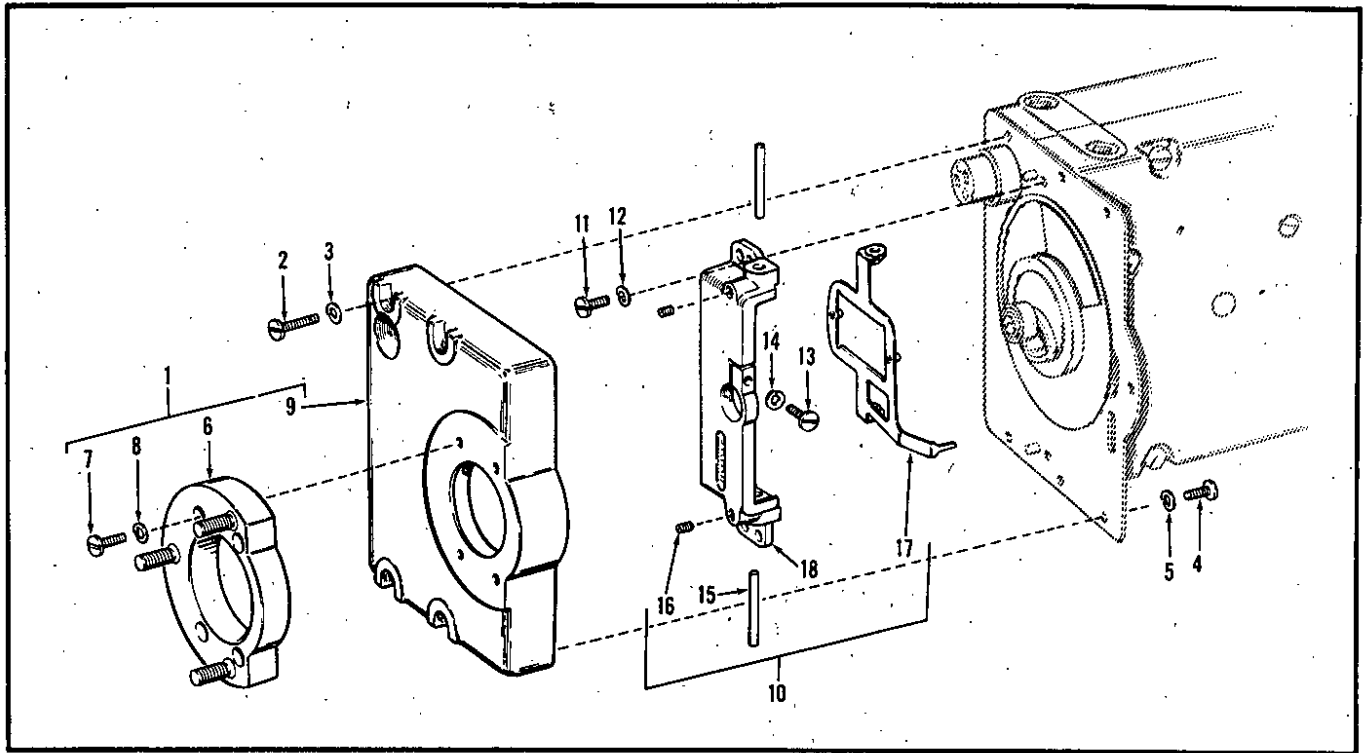


Figure 2. (Sheet 1 of 4) Exploded View of Motion Picture Camera

FIG. & INDEX NO.	PART NO.	DESCRIPTION	UNITS USABLE	
			PER ASSY	ON CODE
2-	091940	CAMERA ASSEMBLY, motion picture (see figure 1 for N.H.A.)	REF	
2-1	091939	ADAPTER ASSEMBLY, lens, front end . . . . .	1	
		(ATTACHING PARTS)		
-2	AN500C3-10	SCREW (99820) . . . . .	4	
-3	AN935-3	WASHER (99779) . . . . .	4	
-4	COMM	SCREW, bdg hd, SS, No. 2-56NC-2 by 1/4 (99780) . . . . .	3	
-5	AN935-2	WASHER, (98354) . . . . .	3	
		-----*		
-6	091973	MOUNT AND STUD ASSEMBLY, lens . . . . .	1	
		(ATTACHING PARTS)		
-7	AN500C3-5	SCREW (99822) . . . . .	4	
-8	AN935-3	WASHER (99779) . . . . .	4	
		-----*		
-9	99617	COVER, front, camera . . . . .	1	
-10	091934	CLAW ASSEMBLY, bridge and frame . . . . .	1	
		(ATTACHING PARTS)		
-11	COMM	SCREW, bdg hd, SS, No. 3-48NC-2 by 5/16 (99821) . . . . .	2	
-12	AN935-3	WASHER (99779) . . . . .	2	
-13	COMM	SCREW, bdg hd, SS, No. 2-56NC-2 by 3/8 (99807) . . . . .	1	
-14	AN935-2	WASHER (98354) . . . . .	1	
		-----*		
-15	99611	PIN, guide, claw frame . . . . .	2	
		(ATTACHING PARTS)		
-16	AN565D4-4	SCREW (99806) . . . . .	2	
		-----*		
-17	091935	FRAME ASSEMBLY, claw . . . . .	1	
-18	99613	BRIDGE, claw frame . . . . .	1	

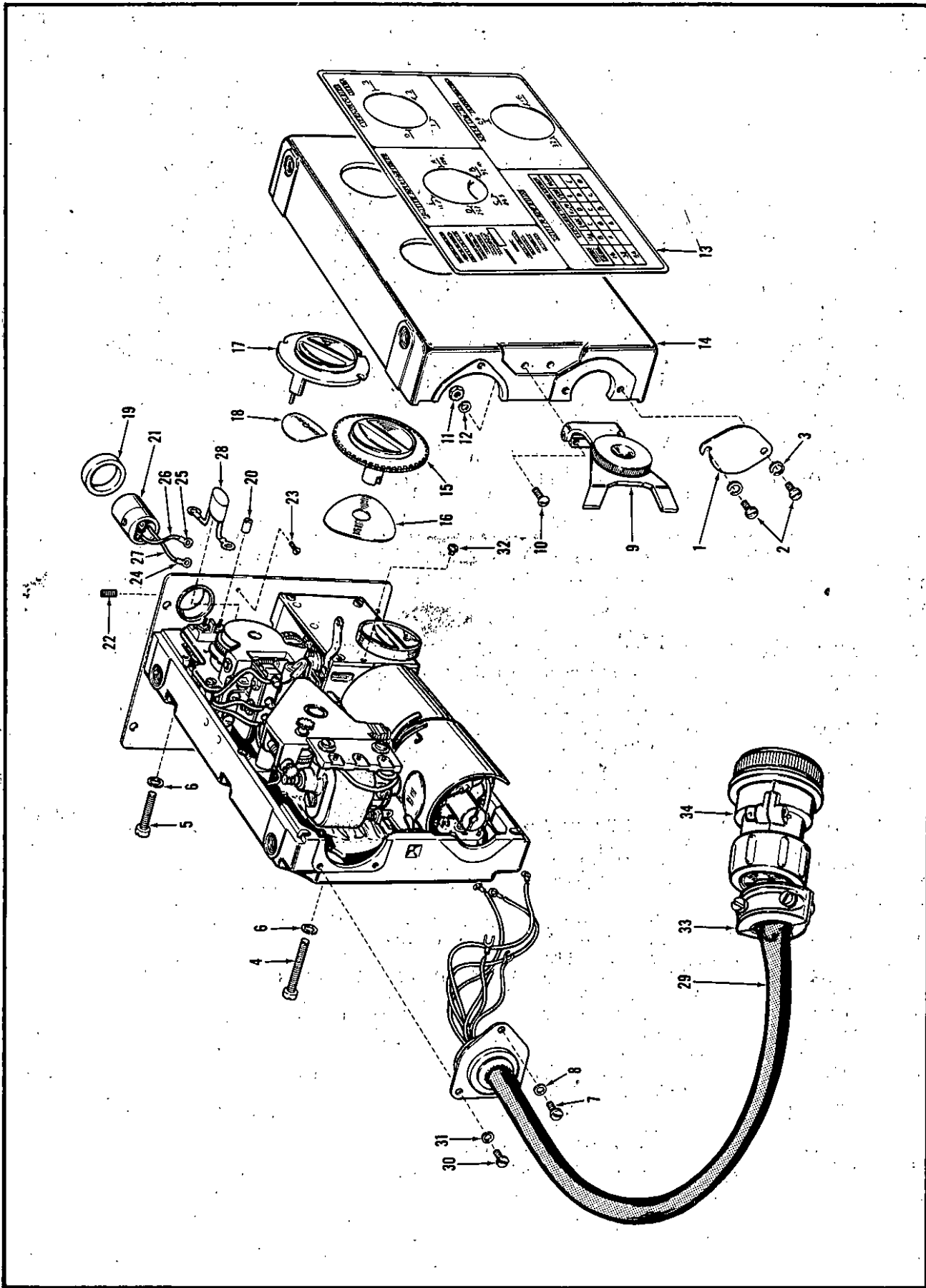


Figure 3. (Sheet 2 of 4) Exploded View of Motion Picture Camera

FIG. & INDEX NO.	PART NO.	DESCRIPTION	UNITS PER ASSY.	USABLE ON CODE
		1 2 3 4 5 6 7		
3-1	99907	COVER, manual motor knob . . . . . (ATTACHING PARTS)	1	
-2	COMM	SCREW, bdg hd, SS, No. 2-56NC-2 by 3/16 in. (99777)	2	
-3	AN935-2	WASHER (98354)	2	
		*-----*		
3-	091976	BODY ASSEMBLY, camera upper . . . . . (ATTACHING PARTS)	1	
3-4	COMM	SCREW, fil-hd, No. 5-40 by 1-1/8 (99817)	2	
-5	AN500C5-12	SCREW (99818)	4	
-6	AN935-5	WASHER (98360)	6	
-7	COMM	SCREW, bdg hd, SS, No. 2-56NC-2 by 3/16 in. (99777)	1	
-8	AN935-2	WASHER (98354)	1	
		*-----*		
-9	091943	CLAMP ASSEMBLY . . . . . (ATTACHING PARTS)	1	
-10	AN515C2-4	SCREW (99824)	2	
-11	AN340B2	NUT (99825)	2	
-12	AN935-2	WASHER (98354)	4	
		*-----*		
-13	99655	PLATE, exposure guide . . . . .	1	
-14	091941	BODY ASSEMBLY, camera upper . . . . .	1	
-15	091947	KNOB ASSEMBLY, adjustment, shutter . . . . .	1	
-16	99707	WASHER, spring . . . . .	1	
-17	091905	KNOB ASSEMBLY, control, over-run . . . . .	1	
-18	99522	WASHER, spring . . . . .	1	
-19	99618	SLEEVE, lens heater jack . . . . .	1	
-20	99516	NUT, terminal, brass . . . . .	7	
-21	80-PC2F	CONNECTOR, jack plug (AMP) (99803)	1	
		(ATTACHING PARTS)		
-22	99805	SCREW, set, slotted, flat pt, No. 4-36 by 3/16 in.	1	
-23	COMM	SCREW, rd hd, brass, No. 0-80NF by 3/16 in. (99804)	1	
		*-----*		
-24	091937	WIRE, jack plug connector . . . . .	1	
-25	091938	WIRE, jack plug connector . . . . .	1	
-26	COMM	SLEEVING, insulating, No. 20, black, 0.032 in. ID by 1/4 in. long . . . . .	1	
-27	COMM	SLEEVING, insulating, No. 20, white, 0.032 in. ID by 3/8 in. long . . . . .	1	
-28	091989	CAPACITOR, 0.005 mf, 150 v . . . . .	1	
-29	091928	CABLE ASSEMBLY, pendent . . . . .	1	
		(ATTACHING PARTS)		
-30	COMM	SCREW, bdg hd, SS, No. 2-56NC-2 by 3/16 (99777)	2	
-31	AN935-2	WASHER (99779)	2	
-32	COMM	SCREW, bdg hd, SS, No. 2-56NC-2 by 1/16 in. (99794)	1	
		*-----*		
-33	AN3057-8	CLAMP . . . . .	1	
-34	AN3106B-16S-1P	CONNECTOR . . . . .	1	

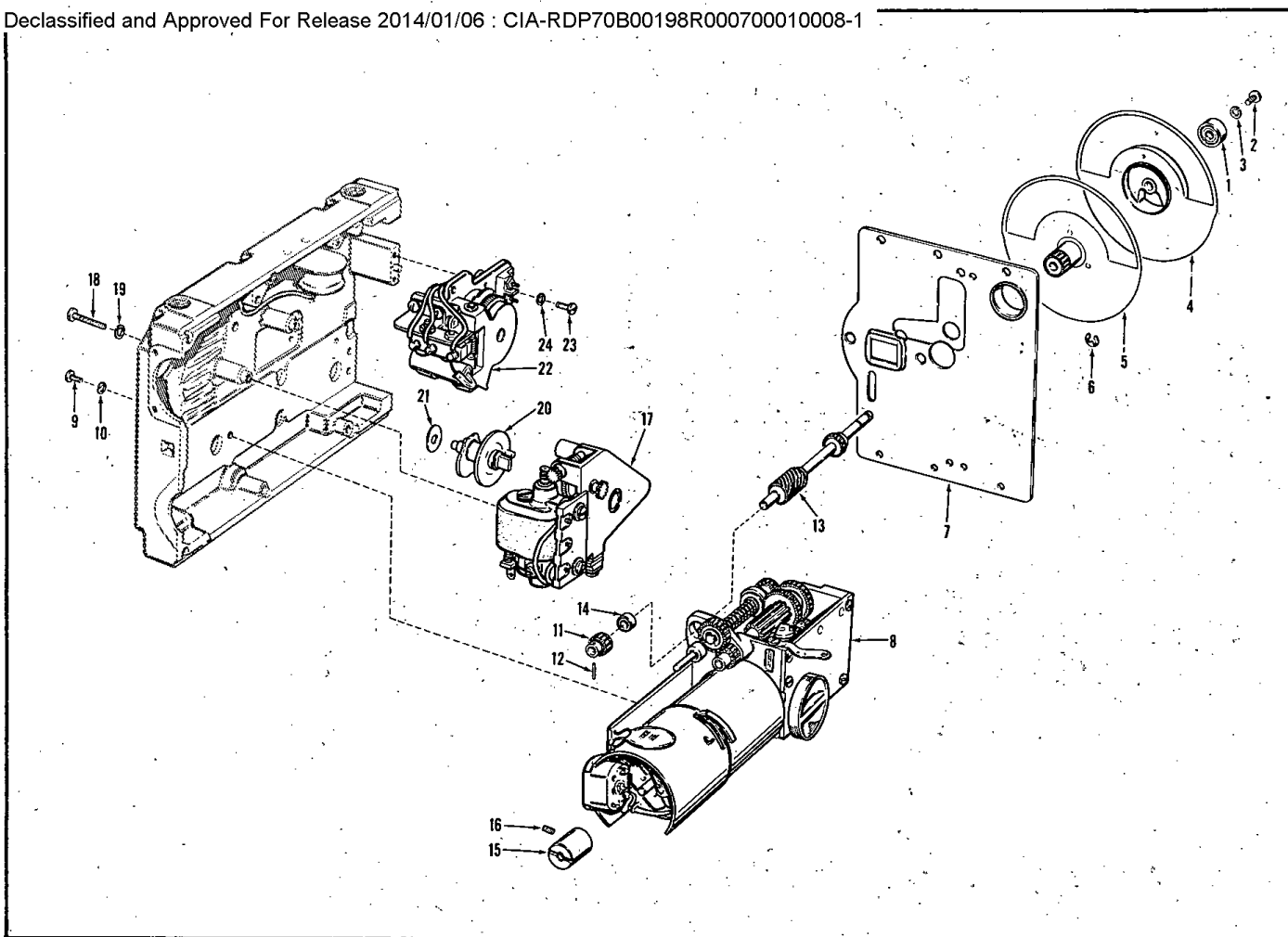


Figure 4. (Sheet 3 of 4) Exploded View of Motion Picture Camera



AN 10-10CB-27

Section II  
Group Assembly Parts List

FIG. & INDEX NO.	PART NO.	DESCRIPTION							UNITS PER ASSY.	USABLE ON CODE
		1	2	3	4	5	6	7		
4-1	77R-2	BEARING, ball, non-loading (ND) (99860)							1	
		(ATTACHING PARTS)								
-2	COMM	SCREW, bdg hd, SS, No. 1-72 by 5/32 (99791)							1	
-3	AN935-2	WASHER (98354)							1	
		*-----*								
-4	091933	SHUTTER AND CAM ASSEMBLY, front							1	
-5	091932	BLADE ASSEMBLY, shutter, back							1	
		(ATTACHING PARTS)								
-6	99859	RING, clamp							1	
		*-----*								
-7	091935	PLATE ASSEMBLY, aperture							1	
-8	091910	SPEED CHANGER ASSEMBLY (see figure 6 for detail parts)							1	
		(ATTACHING PARTS)								
-9	COMM	SCREW, bdg hd, SS, No. 2-56 by 1/4 (99780)							2	
-10	AN935-2	WASHER (98354)							2	
		*-----*								
-11	99631	GEAR, drive, shutter shaft							1	
		(ATTACHING PARTS)								
-12	99581	PIN, dowel, shutter shaft							1	
		*-----*								
-13	091931	CAMSHAFT ASSEMBLY							1	
-14	418	BEARING, radial (MTP) (99782)							1	
-15	99539	COUPLING, manual drive, motor							1	
		(ATTACHING PARTS)								
-16	COMM	SCREW, set, slotted, cup pt, No. 4-40 by 1/8 (99775)							1	
		*-----*								
-17	091919	CONTROL ASSEMBLY, shutter, remote (see figure 7 for detail parts)							1	
		(ATTACHING PARTS)								
-18	COMM	SCREW, bdg hd, SS, No. 3-48 by 3/4 (99819)							3	
-19	AN935-3	WASHER (99779)							3	
		*-----*								
-20	091945	CAM ASSEMBLY, shutter control							1	
-21	99708	WASHER, spring							1	
-22	091977	OVER-RUN ASSEMBLY (see figure 8 for detail parts)							1	
		(ATTACHING PARTS)								
-23	COMM	SCREW, bdg hd, SS, No. 2-56 by 1/4 (99780)							3	
-24	AN935-2	WASHER (98354)							3	
		*-----*								

Section II  
Group Assembly Parts List

AN 10-10CB-27

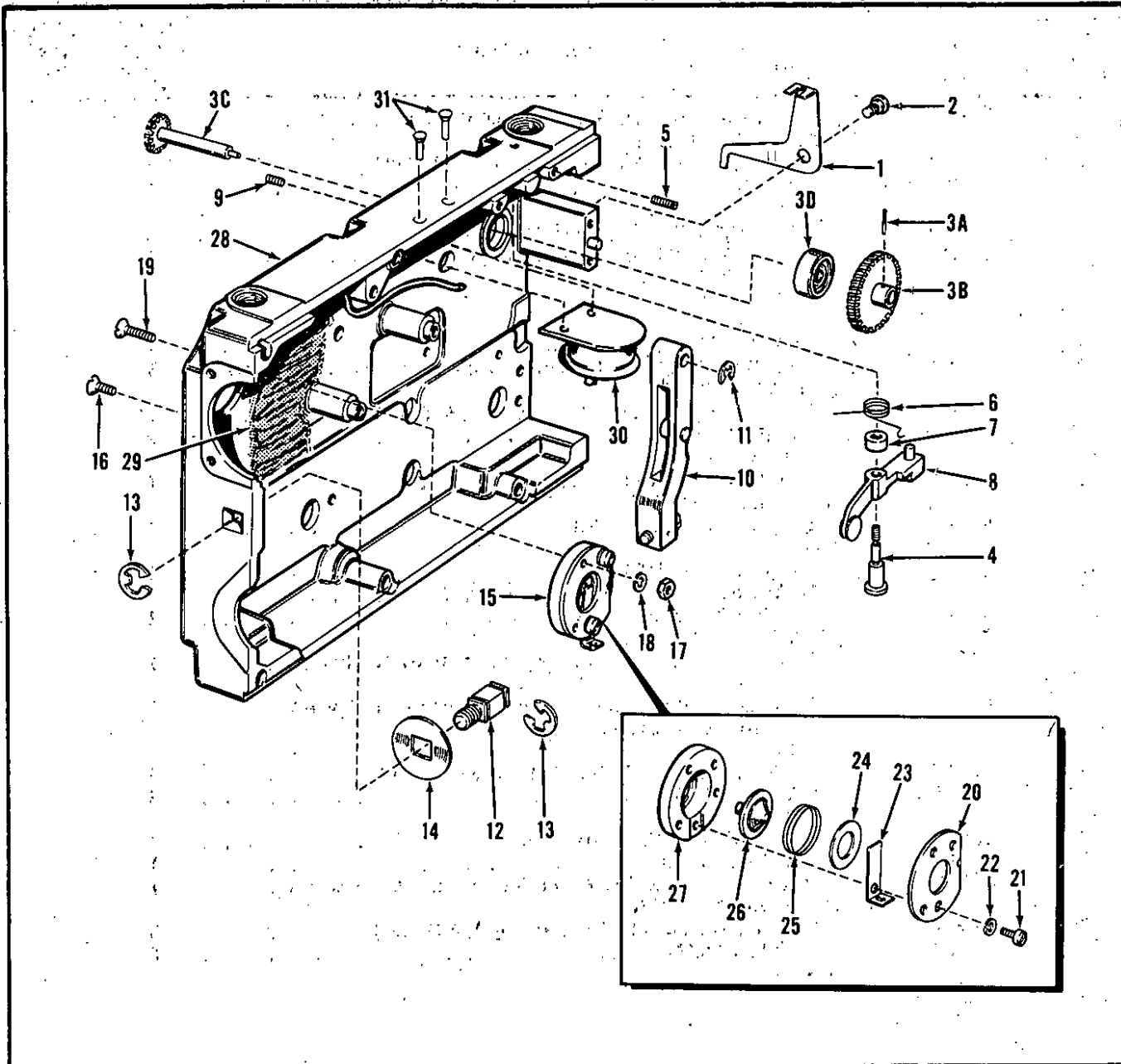


Figure 5. (Sheet 4 of 4) Exploded View of Motion Picture Camera

FIG. & INDEX NO.	PART NO.	DESCRIPTION							UNITS PER ASSY.	USABLE ON CODE
		1	2	3	4	5	6	7		
5-1	99553	LEVER, over-run indicator . . . . .							1	
		(ATTACHING PARTS)								
-2	99555	SCREW, pivot, over-run . . . . .							1	
		*-----								
-3	091969	SHAFT ASSEMBLY, coupling, camera . . . . .							1	
		(ATTACHING PARTS)								
-3A	99774	PIN, dowel, 0.046 by 1/4 in. . . . .							1	
		*-----								
-3B	99656	GEAR, mechanism drive . . . . .							1	
-3C	99657	GEAR, coupling, camera . . . . .							1	
-3D	77R-2	BEARING, ball, non-loading (ND) (99860)							1	
-4	99556	STUD, eccentric, over-run . . . . .							1	
		(ATTACHING PARTS)								
-5	AN565C2-6	SCREW (99801) . . . . .							1	
		*-----								
-6	99554	SPRING, over-run . . . . .							1	
-7	99557	SPACER, over-run . . . . .							1	
-8	091982	LEVER AND PIN ASSEMBLY, over-run indicator . . . . .							1	
-9	AN565D2-3	SCREW (99802) . . . . .							1	
-10	091927	LEVER ASSEMBLY, shutter control . . . . .							1	
		(ATTACHING PARTS)								
-11	5133-12	RING, retaining, Type "E" (WKI) (17639) . . . . .							1	
		*-----								
-12	99574	STUD, magazine clamp . . . . .							1	
		(ATTACHING PARTS)								
-13	1000-18	RING, retaining (IRRC) (20808) . . . . .							2	
		*-----								
-14	99575	WASHER, spring, magazine clamp . . . . .							1	
-15	091926	CONTACT ASSEMBLY . . . . .							1	
		(ATTACHING PARTS)								
-16	AN505B2-3	SCREW (99816) . . . . .							1	
-17	AN340B2	NUT (99825) . . . . .							1	
-18	AN935-2	WASHER (99812) . . . . .							1	
-19	AN505B2-6	SCREW (99815) . . . . .							2	
		*-----								
-20	99545	COVER, contact plate . . . . .							1	
		(ATTACHING PARTS)								
-21	AN500C2-2	SCREW (99809) . . . . .							2	
-22	AN935-2	WASHER (98354) . . . . .							2	
		*-----								
-23	99547	SPRING, contact, flat . . . . .							1	
-24	99546	WASHER, contact . . . . .							1	
-25	99548	SPRING, contact, coil . . . . .							1	
-26	99550	PLUNGER, contact . . . . .							1	
-27	99549	HOUSING, contact . . . . .							1	
-28	091979	BODY AND HEATER ASSEMBLY, lower . . . . .							1	
-29	99576	ELEMENT, heating, lower body . . . . .							1	
-30	C-4344-2-1	THERMOSTAT AND BRACKET (SPTD) (99573) . . . . .							1	
		(ATTACHING PARTS)								
-31	COMM	RIVET, tubular, c'sunk head, aluminum, 0.058 in. diam., 3/16 in. long (99814) . . . . .							2	
		*-----								
5-	N.P.N.	BODY, camera, lower . . . . .							NP	

Section II  
Group Assembly Parts List

AN 10-10CB-27

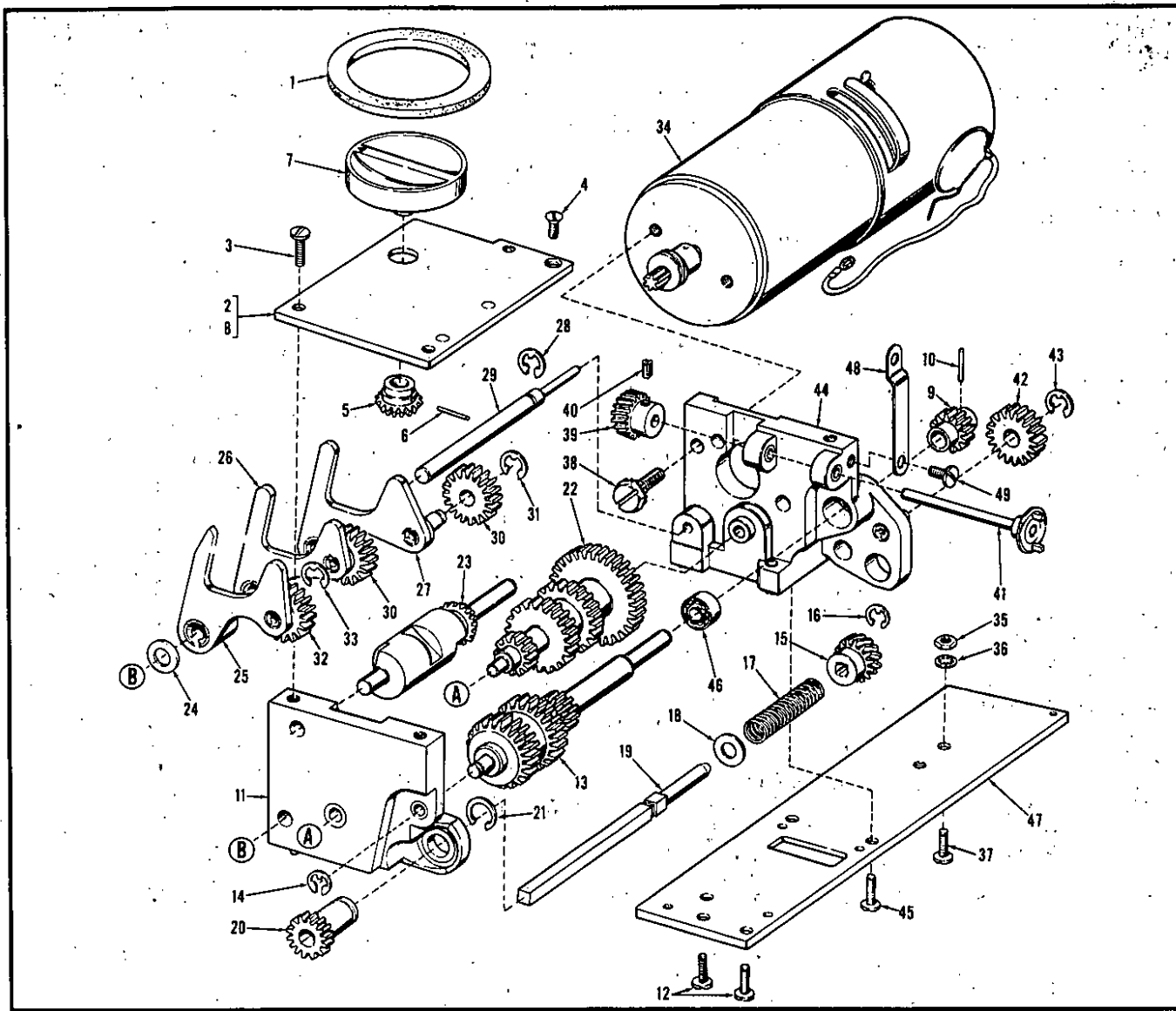


Figure 6. Exploded View of Speed Changer Assembly

FIG. & INDEX NO.	PART NO.	DESCRIPTION	UNITS PER ASSY.	USABLE ON CODE
6-	091910	SPEED CHANGER ASSEMBLY (see figure 4-8 for N.H.A. and attaching parts)	REF	
6-1	99876	WASHER, felt	1	
-2	091916	PLATE ASSEMBLY, cover, speed changer (ATTACHING PARTS)	1	
-3	COMM	SCREW, bdg hd, SS, No. 2-56NC-2 by 1/4 (99780)	2	
-4	COMM	SCREW, flat hd, SS, No. 2-56NC-2 by 1/8 (99934)	1	
-5	99604	GEAR, adjusting knob (ATTACHING PARTS)	1	
-6	99937	PIN, steel	1	
-7	99602	KNOB, speed control adjusting	1	
-8	N.P.N.	PLATE, cover	NP	
-9	99630	GEAR, output, speed changer (ATTACHING PARTS)	1	
-10	99772	PIN, steel	1	

FIG. & INDEX NO.	PART NO.	DESCRIPTION							UNITS PER ASSY.	USABLE ON CODE
		1	2	3	4	5	6	7		
6-11	091917	BRACKET, gear shift (ATTACHING PARTS)							1	
-12	COMM	SCREW, bdg hd, SS, No. 2-56NC-2 by 1/4 (99780)							2	
-13	99528	GEAR, speed changer (ATTACHING PARTS)							1	
-14	5133-9-C-015	RING, retaining, Type "E" (WKI) (99769)							1	
-15	99593	GEAR, displacement, shutter (ATTACHING PARTS)							1	
-16	5133-9-C-015	RING, retaining, Type "E" (WKI) (99769)							1	
-17	99594	SPRING, shutter control							1	
-18	99600	WASHER, shutter end							1	
-19	99596	SHAFT, displacement, shutter							1	
-20	99597	GEAR, adjustment, shutter (ATTACHING PARTS)							1	
-21	5103-18	RING, retaining, crescent (WKI) (16184)							1	
-22	99606	SHAFT, drive gear, speed changer							1	
-23	091915	SHAFT, index							1	
-24	99589	WASHER, speed changer							1	
-25	091914	LEVER ASSEMBLY, gear shift							1	
-26	091913	LEVER ASSEMBLY, gear shift							1	
-27	091912	LEVER ASSEMBLY, gear shift							1	
-28	5133-12	RING, retaining, Type "E" (WKI) (17639)							1	
-29	99590	SHAFT, gear shift lever							1	
-30	99540	GEAR, speed changer (ATTACHING PARTS)							2	
-31	5133-12	RING, retaining, Type "E" (WKI) (17639)							2	
-32	99932	GEAR, speed changer (ATTACHING PARTS)							1	
-33	5133-12	RING, retaining, Type "E" (WKI) (17639)							1	
-34	091974	MOTOR ASSEMBLY (ATTACHING PARTS)							1	
-35	AN340C2	NUT (1416)							1	
-36	AN936A2	WASHER (99830)							1	
-37	COMM	SCREW, bdg hd, SS, No. 2-56NC-2 by 5/16 (99778)							1	
-38	99882	SCREW, hex hd, special, No. 4-40 by 5/16							2	
-39	99530	GEAR, over-run motor (ATTACHING PARTS)							1	
-40	AN565D2-2	SCREW (99533)							1	
-41	091978	COUPLING AND SHAFT ASSEMBLY, over-run							1	
-42	99540	GEAR, speed changer (ATTACHING PARTS)							1	
-43	5133-12	RING, retaining, Type "E" (WKI) (17639)							1	
-44	091911	BODY ASSEMBLY, motor bracket (ATTACHING PARTS)							1	
-45	COMM	SCREW, bdg hd, SS, No. 2-56NC-2 by 1/4 (99780)							2	
-46	418	BEARING, radial (MTP) (99782)							1	
-47	99629	PLATE, base, speed changer							1	
-48	99625	STRAP, leadwire retaining (ATTACHING PARTS)							1	
-49	COMM	SCREW, bdg hd, SS, No. 2-56NC-2 by 1/8 (99788)							1	

Section II  
Group Assembly Parts List

AN 10-10CB-27

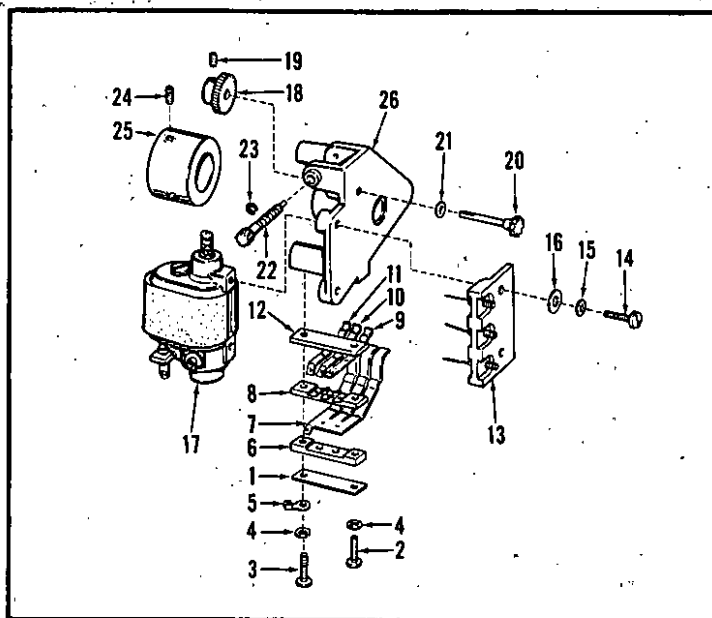


Figure 7. Exploded View of Remote Shutter Control Assembly

FIG. & INDEX NO.	PART NO.	DESCRIPTION	UNITS PER ASSY.							USABLE ON CODE
			1	2	3	4	5	6	7	
7-	091919	CONTROL ASSEMBLY, remote, shutter (see figure 4-17 . . . . . for N.H.A.)								REF
7-1	99870	PLATE, backing, shutter control . . . . . (ATTACHING PARTS)								1
-2	COMM	SCREW, bdg hd, SS, No. 2-56NC by 3/8 (99807)								1
-3	COMM	SCREW, bdg hd, SS, No. 2-56NC by 3/8 (99807)								1
-4	AN935-2	WASHER, spring lock, light; No. 2 (98354)								2
-5	341	LUG, terminal (ZE) (99826)								1
-6	99703	PLATE, top, shutter control switch								1
-7	99702	CONTACT, switch, shutter control								1
-8	99704	PLATE, bottom, shutter control switch								1
-9	99699	LEAF, contact, shutter control switch								1
-10	99700	LEAF, contact, shutter control switch								1
-11	99701	LEAF, contact, shutter control switch								1
-12	99705	STRIP, insulating, shutter control								1
-13	091949	BOARD ASSEMBLY, terminal (ATTACHING PARTS)								1
-14	COMM	SCREW, bdg hd, SS, No. 2-56NC by 3/8 (99807)								2
-15	AN936A2	WASHER (99830)								2
-16	99878	WASHER, shim, SS, 0.016 in. thick								2
-17	091953	MOTOR ASSEMBLY, shutter control								1
-18	99697	GEAR, remote control (ATTACHING PARTS)								1
-19	AN565D2-3	SCREW (99533)								1
-20	99709	PINION, remote control								1
-21	99706	WASHER, shutter control								1
-22	99698	SHAFT, gear, shutter control (ATTACHING PARTS)								1
-23	5103-12-C	RING, retaining (WKI) (99884)								1
7-	091948	CAM ASSEMBLY, shutter control								1
-24	COMM	SCREW, set, slotted hd, flat pt, SS, No. 2-56NC-2 by 5/32 in. (99668)								3
-25	99667	CAM, shutter control								1
-26	091944	FRAME ASSEMBLY, shutter control								1

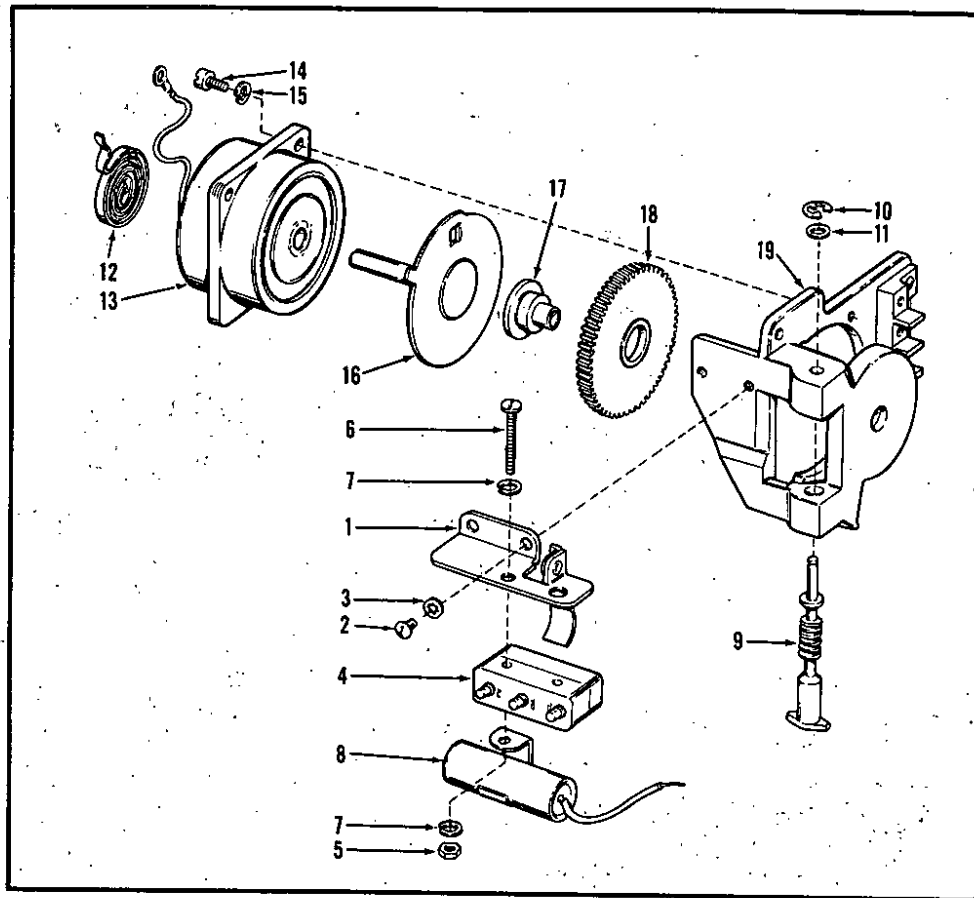


Figure 8. Exploded View of Over-run Assembly

FIG. & INDEX NO.	PART NO.	DESCRIPTION	UNITS PER ASSY.	USABLE ON CODE
8-	091977	OVER-RUN ASSEMBLY (see figure 4-22 for N.H.A.)	REF	
8-1	091981	BRACKET ASSEMBLY, over-run switch	1	
-2	AN500C2-2	SCREW (99809)	2	
-3	AN935-2	WASHER (98354)	2	
-4	1SM1	SWITCH, micro (MCS) (99795)	1	
-5	AN304B2	NUT (99825)	2	
-6	AN515C2-7	SCREW (99796)	2	
-7	AN935-2	WASHER (98354)	4	
-8	XG-1990	CAPACITOR, 0.1 mfd (GUC) (99515)	1	
-9	99526	WORM, over-run	1	
-10	5133-9-C-015	RING, retaining, Type "E" (WKI) (99769)	1	
-11	99525	WASHER, over-run	1	
-12	99527	SPRING, over-run solenoid	1	
-13	091902	SOLENOID ASSEMBLY, over-run	1	
-14	AN500C2-3	SCREW (5248)	3	
-15	AN935-2	WASHER (98354)	3	
-16	091904	PLUNGER ASSEMBLY, over-run	1	
-17	99524	STUD, helical gear	1	
-18	99523	GEAR, helical over-run	1	
-19	091901	FRAME ASSEMBLY, over-run	1	

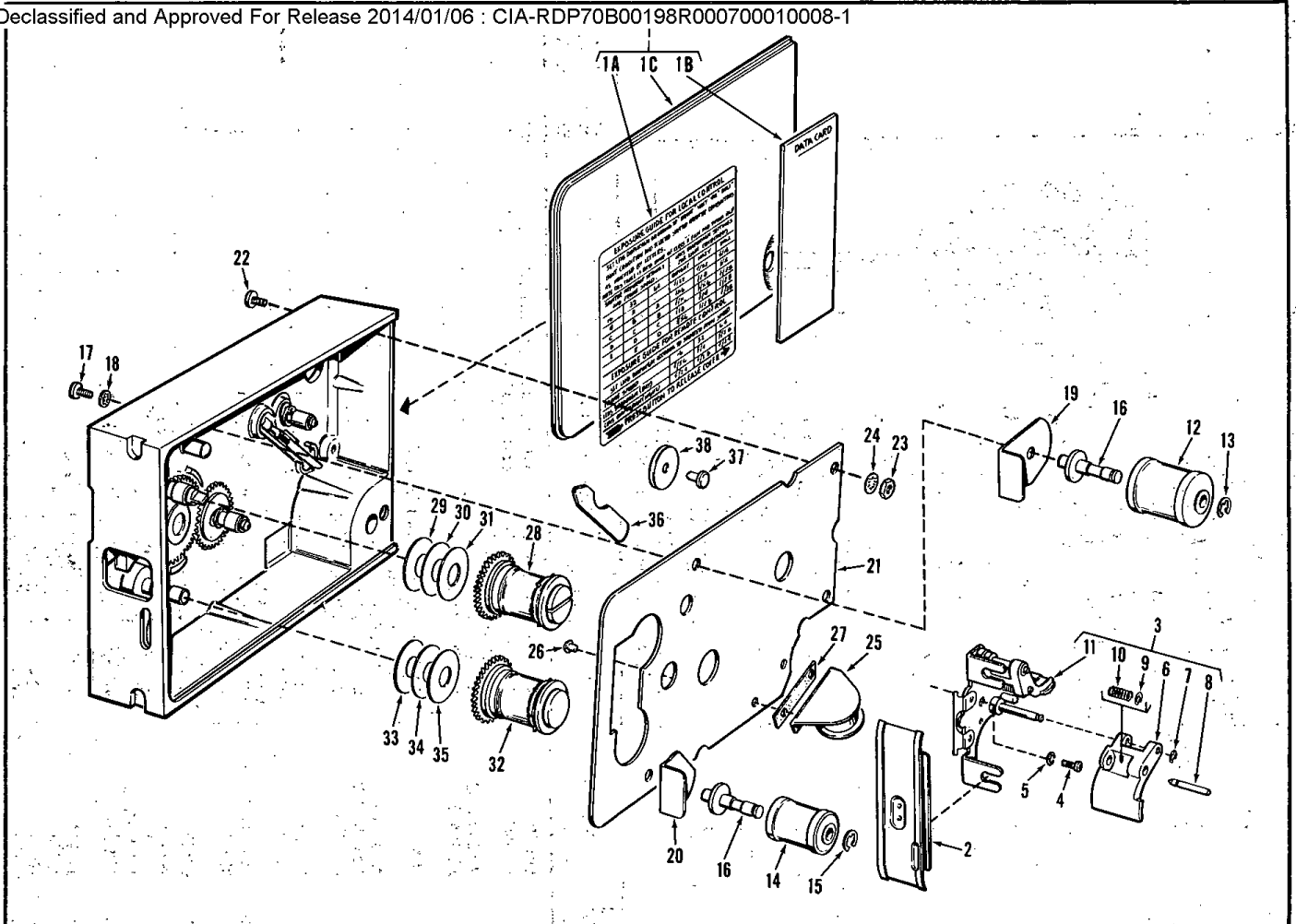


Figure 9. (Sheet 1 of 2) Exploded View of Magazine Assembly



FIG. & INDEX NO.	PART NO.	DESCRIPTION	UNITS	USABLE
			PER ASSY.	ON CODE
9-	091920	MAGAZINE ASSEMBLY (see figure 1 for N.H.A.)	REF	
9-1	091959	COVER ASSEMBLY, magazine	1	
-1A	99716	PLATE, exposure guide	1	
-1B	99714	CARD, data, magazine	1	
-1C	99715	COVER, magazine	1	
-2	091922	PLATE ASSEMBLY, pressure	1	
-3	091924	GUIDE ASSEMBLY, film (ATTACHING PARTS)	1	
-4	COMM	SCREW, bdg hd, Phillips, SS, No. 2-56NC-2 by 1/4 (99832)	1	
-5	AN936A2	WASHER (99830)	1	
		*-----		
-6	99673	ARM, film guide (ATTACHING PARTS)	2	
-7	5133-9-C-015	RING, retaining, Type "E" (WKI) (99769)	2	
		*-----		
-8	99929	PLUNGER, film guide (ATTACHING PARTS)	2	
-9	5133-9-C-015	RING, retaining, Type "E" (WKI) (99769)	2	
-10	99676	SPRING, film guide plunger	2	
		*-----		
-11	N.P.N.	BRACKET AND STUD ASSEMBLY, film guide	NP	
-12	99758	ROLLER, feed (ATTACHING PARTS)	1	
-13	5133-12	RING, retaining, Type "E" (WKI) (17639)	1	
		*-----		
-14	99681	ROLLER, take-up (ATTACHING PARTS)	1	
-15	5133-12	RING, retaining, Type "E" (WKI) (17639)	1	
		*-----		
-16	99756	STUD, roller (ATTACHING PARTS)	2	
-17	COMM	SCREW, bdg hd, Phillips, No. 2-64NF-2 by 3/16 (99831)	2	
-18	AN936A2	WASHER (99830)	2	
		*-----		
-19	99755	PLATE, feed roller	1	
-20	99757	BRACKET, take-up roller	1	
-21	091962	HEATER ASSEMBLY, magazine (ATTACHING PARTS)	1	
-22	99833	SCREW, flat hd, Phillips, No. 2-56NC-2 by 3/8	2	
-23	AN340B2	NUT (99825)	2	
-24	AN936A2	WASHER (99830)	2	
		*-----		
-25	C-4344-1-1	THERMOSTAT, magazine (SPTD) (99741) (ATTACHING PARTS)	1	
-26	COMM	RIVET, oval hd, brass, 0.061 in. diam, 1/8 in. long (99768)	2	
		*-----		
-27	99914	STRIP, thermostat insulating	1	
	N.P.N.	PLATE, magazine heater	NP	
-28	091968	SPROCKET ASSEMBLY, feed	1	
-29	99744	WASHER, shim, SS, 0.010 in.-thick	AR	
-30	99797	WASHER, shim, SS, 0.005 in.-thick	AR	
-31	99798	WASHER, shim, SS, 0.003 in.-thick	AR	
-32	091925	SPROCKET ASSEMBLY, take-up	1	
-33	99745	WASHER, shim, SS, 0.010-in. thick	AR	
-34	99799	WASHER, shim, SS, 0.005-in. thick	AR	
-35	99800	WASHER, shim, SS, 0.003-in. thick	AR	
-36	99753	RETAINER, gear shaft	1	
-37	99916	CONTACT, heater	1	
-38	99749	WASHER, insulating, heater contact	1	

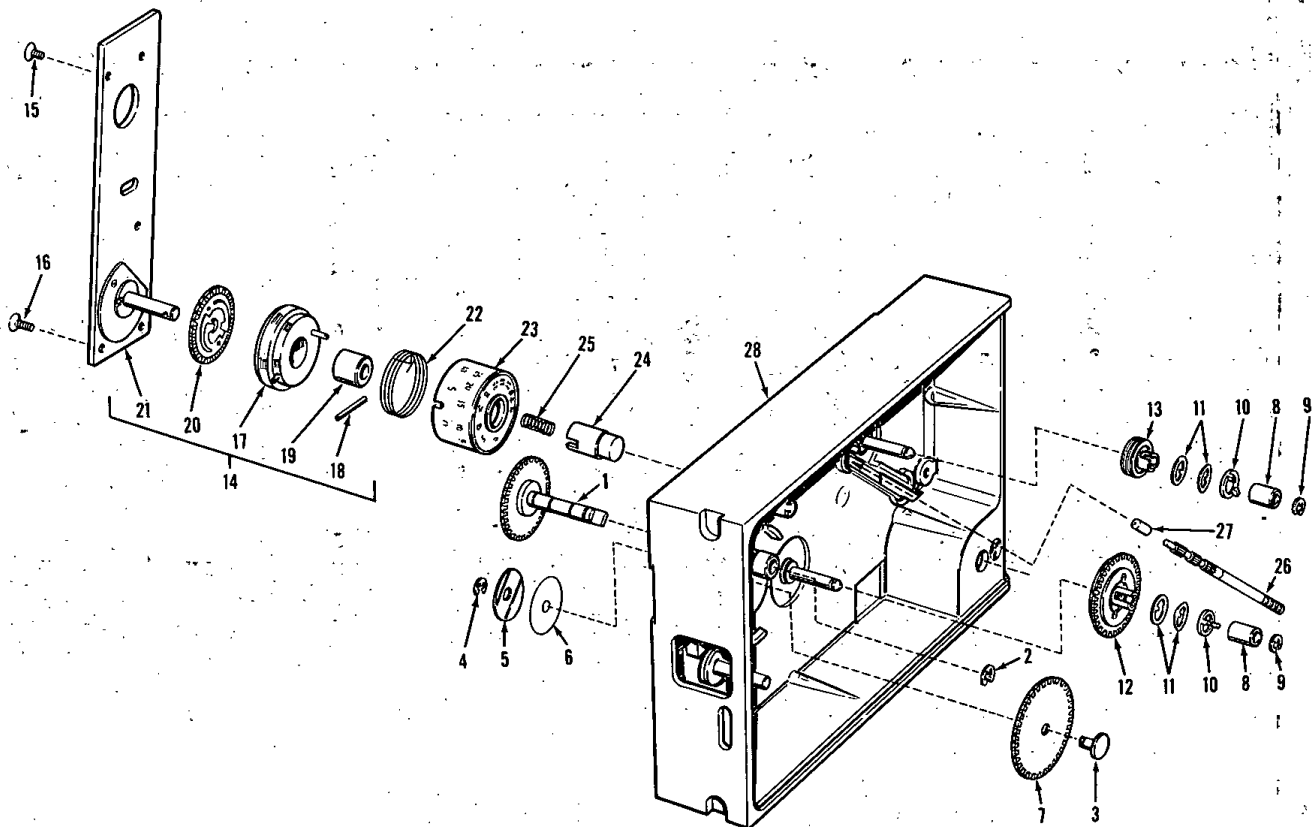


Figure 10. (Sheet 2 of 2) Exploded View of Magazine Assembly

FIG. & INDEX NO.	PART NO.	DESCRIPTION	UNITS	USABLE
			PER ASSY.	ON CODE
10-1	091921	. SHAFT ASSEMBLY, drive, feed sprocket (ATTACHING PARTS)	1	
-2	5133-12	. RING, retaining, Type "E" (WKI) (17639)	1	
-3	99752	. STUD, idler gear (ATTACHING PARTS)	1	
-4	5133-12	. RING, retaining, Type "E" (WKI) (17639)	1	
-5	99829	. WASHER, spring	1	
-6	99764	. WASHER, shim, brass, 0.005 in. thick	1	
-7	99750	. GEAR, idler	1	
-8	99746	. SPACER, reel (ATTACHING PARTS)	2	
-9	5133-6	. RING, retaining, Type "E" (WKI) (99828)	2	
-10	99762	. KEY, reel	2	
-11	99754	. WASHER, spring	4	
-12	091956	. COUPLING ASSEMBLY, take-up reel	1	
-13	99763	. WORM, feed reel	1	
-14	091923	. GEAR AND SUPPORT ASSEMBLY, counter (ATTACHING PARTS)	1	
-15	COMM	. SCREW, flat hd, No. 2-56NC-2 by 1/8 in. (99781)	1	
-16	COMM	. SCREW, flat hd, SS, Phillips, No. 2-56NC-2 by 3/16 in. (99834)	2	
-17	091955	. RATCHET ASSEMBLY, counter (ATTACHING PARTS)	1	
-18	79 014 062 0437	. PIN, roll (EN) (99767)	1	
-19	99644	. SLEEVE, counter	1	
-20	091957	. GEAR ASSEMBLY, counter	1	
-21	091958	. SUPPORT ASSEMBLY, counter	1	
-22	99646	. SPRING, torsion, counter	1	
-23	091961	. DRUM ASSEMBLY, counter	1	
-24	99645	. BUTTON, cover release	1	
-25	99761	. SPRING, compression, counter	1	
-26	091987	. SHAFT ASSEMBLY, counter	1	
-27	99759	. BEARING, end, counter shaft	1	
-28	091960	. BODY ASSEMBLY, magazine	1	

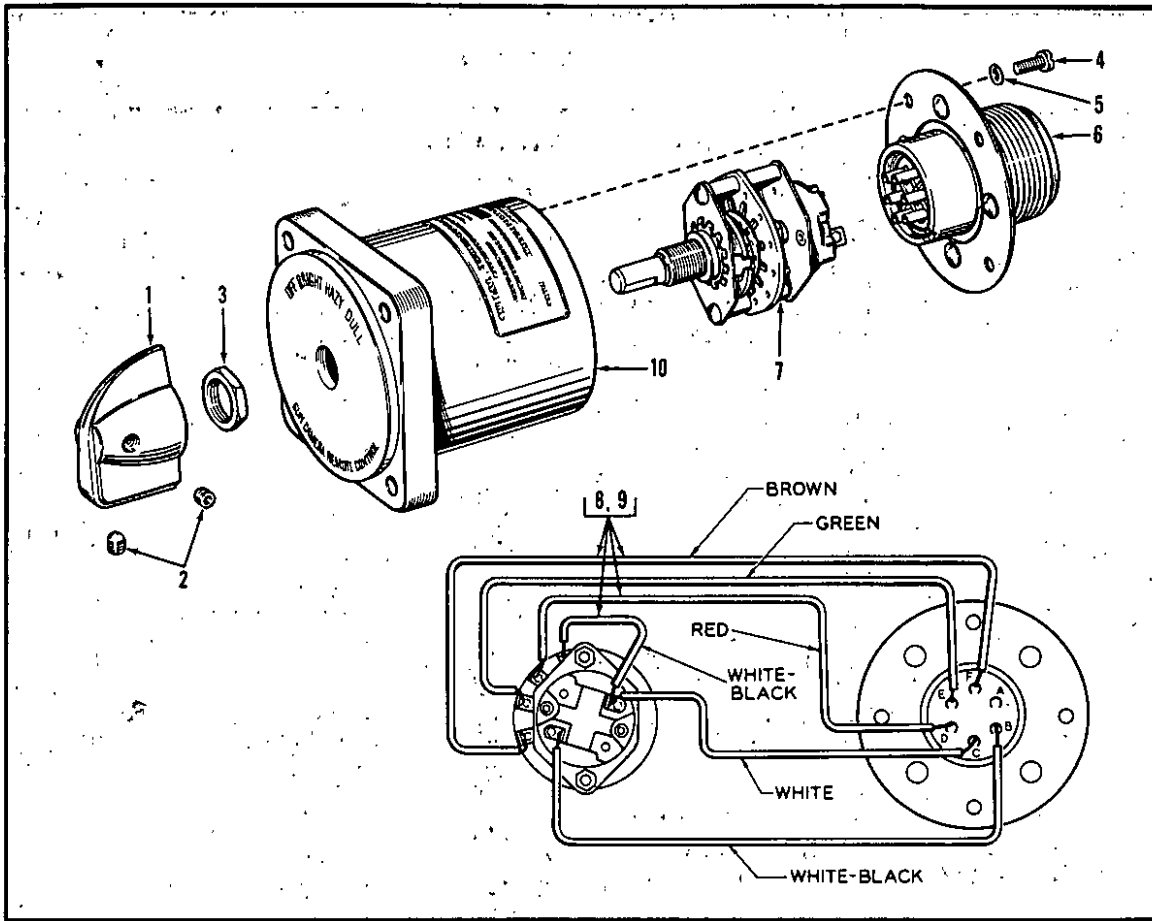


Figure 11. Exploded View of Remote Shutter Control Box Assembly

FIG. & INDEX NO.	PART NO.	1	2	3	4	5	6	7	DESCRIPTION	UNITS PER ASSY.	USABLE ON CODE
11-	091963								BOX ASSEMBLY, remote shutter control (see figure 1 for N.H.A.)	REF	
11-1	99732								KNOB, pointer, remote control (ATTACHING PARTS)	1	
-2	COMM								SCREW, set, cup pt, hex socket, No. 8-32 by 1/8 in.	2	
	091966								SWITCH ASSEMBLY, remote control (ATTACHING PARTS)	1	
-3	COMM								NUT, lock, hex, SS, 3/8-32	1	
-4	AN500C4-4								SCREW (99790)	4	
-5	AN935-4								WASHER (99883)	4	
-6	091964								RECEPTACLE ASSEMBLY	1	
-7	99723								SWITCH, SPST, 4-position, 1 section	1	
-8	COMM								WIRE, copper, solid, bare, tinned, No. 22	AR	
-9	COMM								SLEEVING, insulating, Grade A-1, No. 20, colors as noted	AR	
-10	091967								HOUSING ASSEMBLY, remote control	1	

SECTION III  
NUMERICAL INDEX

CLASS CODE AND STOCK NUMBER	PART NUMBER	SOURCE CODE	FIG. & INDEX NO.	QTY. PER ART- ICLE	CLASS CODE AND STOCK NUMBER	PART NUMBER	SOURCE CODE	FIG. & INDEX NO.	QTY. PER ART- ICLE
2900	Nut		11-3	1	2900	091933		4-4	1
2900	Rivet		5-31	2	2900	091934		2-10	1
2900	Rivet		9-26	2	2900	091935		2-17	1
2900	Screw		4-2	1	2900	091936		4-7	1
2900	Screw		3-32	1	2900	091937		3-24	1
2900	Screw		6-49	1	2900	091938		3-25	1
2900	Screw		3-2	5	2900	091939		2-1	1
2900	Screw		2-4	15	2900	091940		1-1	1
2900	Screw		6-37	2	2900	091941		3-14	1
2900	Screw		2-13	4	2900	091942		3-10	1
2900	Screw		2-11	2	2900	091943		3-9	1
2900	Screw		4-18	3	2900	091944		7-26	1
2900	Screw		9-17	2	2900	091945		4-20	1
2900	Screw		9-4	1	2900	091947		3-15	1
2900	Screw		3-4	2	2900	091948		7-	1
2900	Screw		6-4	2	2900	091949		7-13	1
2900	Screw		10-16	2	2900	091953		7-17	1
2900	Screw		3-23	1	2900	091955		10-17	1
2900	Set screw		11-2	2	2900	091956		10-12	1
2900	Set screw		4-16	1	2900	091957		10-20	1
2900	Set screw		7-24	3	2900	091958		10-21	1
7000	Sleeving		11-9	AR	2900	091959		9-1	1
8860	Wire		11-8	AR	2900	091960		10-28	1
2900	AN3057-8		3-33	1	2900	091961		10-23	1
2900	AN3106B-16S-1P		3-34	1	2900	091962		9-21	1
6700	AN340B2		3-11	7	2900	091963		1-8	1
6700	AN340C2		6-35	1	8850	091964		11-6	1
6700	AN500C2-2		5-21	4	3360	091966		11-	1
6700	AN500C2-3		8-14	3	2900	091967		11-10	1
6700	AN500C3-10		2-2	4	2900	091968		9-28	1
6700	AN500C3-5		2-7	4	2900	091969		5-3	1
6700	AN500C4-4		11-4	4	2900	091973		2-6	1
6700	AN500C5-12		3-5	4	2900	091974		6-34	1
6700	AN505B2-3		5-16	1	2900	091976		3-	1
6700	AN505B2-6		5-19	2	2900	091977		4-22	1
6700	AN515C2-4		3-10	2	2900	091978		6-41	1
0700	AN515C2-7		8-6	2	2900	091979		5-28	1
6700	AN565C2-6		5-5	1	2900	091981		8-1	1
6700	AN565D2-2		6-40	1	2900	091982		5-8	1
6700	AN565D2-3		5-9	2	2900	091983		1-3	1
6700	AN565D4-4		2-16	2	2900	091984		1-5	1
6700	AN635-2		2-5	30	2900	091985		1-6	1
6700	AN635-3		2-3	13	2900	091987		10-26	1
6700	AN635-4		11-5	4	2900	091989		3-28	1
6700	AN635-5		3-6	6	3360	15M1		8-4	2
6700	AN638A2		6-36	8	6700	1000-18		5-13	2
3360	C-4344-1-1		9-25	1	6700	1416		(Ref 6-33)	
3360	C-4344-2-1		5-29	1	6700	16184		(Ref 6-21)	
2900-10683	Des. 917-A		1-	1	6700	17639		(Ref 5-11)	
3330	XG-1890		8-8	1	6700	20808		(Ref 5-13)	
7400	091601		1-9	1	6500	22-K2-82		1-4	3
2900	091901		8-19	1	8880	341		7-5	1
3380	091902		8-13	1	3400	418		4-14, 6-46	2
2900	091904		8-16	1	6700	5103-12-C		7-23	1
2900	091905		3-17	1	6700	5103-18		6-21	1
2900	091910		4-8	1	6700	5133-12		5-11	10
2900	091911		6-4A	1				6-28	
2900	091912		6-27	1				6-31, 6-33	
2900	091913		6-26	1				6-43	
2900	091914		6-25	1				9-13	
2900	091915		6-23	1				9-15	
2900	091916		6-2	1				10-2	
2900	091917		6-11	1				10-4	
2900	091919		4-17	1				10-9	
2900	091920		1-2	1	6700	5133-6		6-14	2
2900	091921		10-1	1	6700	5133-8-C-015		6-16	7
2900	091922		9-2	1				8-10	
2900	091923		10-14	1				9-7	
2900	091924		9-3	1				9-9	
2900	091925		9-32	1				(Ref 8-14)	
2900	091926		5-15	1	6700	5248		4-1	2
2900	091927		5-10	1	3400	77R-2		5-3D	
2900	091928		3-29	1				10-18	
2900	091931		4-13	1	6530	79-014-062-0437		3-21	1
2900	091932		4-5	1	8850	80-PC2F		(Ref 2-5)	
					2900	98354			

Section III  
Numerical Index

AN 10-10CB-27

CLASS CODE AND STOCK NUMBER	PART NUMBER	SOURCE CODE	FIG. & INDEX NO.	QTY. PER ART- ICLE	CLASS CODE AND STOCK NUMBER	PART NUMBER	SOURCE CODE	FIG. & INDEX NO.	QTY. PER ART- ICLE
6700	98360		(Ref 3-6)		2900	99749		9-38	1
3330	99515		(Ref 8-8)		2900	99750		10-7	1
2900	99516		3-20	4	2900	99752		10-3	1
2900	99522		3-18	1	2900	99753		9-36	1
2900	99523		8-18	1	2900	99754		10-11	4
2900	99524		8-17	1	2900	99755		9-19	1
2900	99525		8-11	1	2900	99756		9-16	2
2900	99526		8-9	1	2900	99757		9-20	1
2900	99527		8-12	1	2900	99758		9-12	1
2900	99528		6-13	1	2900	99759		10-27	1
2900	99530		6-39	1	2900	99761		10-25	1
6700	99533		(Ref 6-40)		2900	99762		10-10	2
2900	99539		4-15	1	2900	99763		10-13	1
2900	99540		6-30	3	2900	99764		10-6	1
			6-42		6530	99767		(Ref 10-18)	
2900	99545		5-20	1	2900	99768		(Ref 9-26)	
2900	99546		5-24	1	6700	99769		(Ref 6-14)	
2900	99547		5-23	1	2900	99774		5-3A	1
2900	99548		5-25	1	2900	99775		(Ref 4-16)	
2900	99549		5-27	1	2900	99777		(Ref 3-2)	
2900	99550		5-26	1	2900	99778		(Ref 6-37)	
2900	99553		5-1	1	6700	99779		(Ref 2-3)	
2900	99554		5-6	1	2900	99780		(Ref 2-4)	
2900	99555		5-2	1	3400	99782		(Ref 4-14)	
2900	99556		5-4	1	2900	99788		(Ref 6-49)	
2900	99557		5-7	1	6700	99780		(Ref 11-4)	
3360	99573		(Ref 5-30)		2900	99791		(Ref 4-2)	
2900	99574		5-12	1	2900	99794		(Ref 3-27)	
2900	99575		5-14	1	3360	99795		(Ref 8-4)	
2900	99576		5-29	1	6700	99786		(Ref 8-6)	
2900	99581		4-12	1	2900	99797		9-30	AR
2900	99589		6-24	1	2900	99798		9-31	AR
2900	99590		6-29	1	2900	99799		9-34	AR
2900	99593		6-15	1	2900	99800		9-35	AR
2900	99594		6-17	1	6700	99801		(Ref 5-5)	
2900	99596		6-19	1	6700	99802		(Ref 5-9)	
2900	99597		6-20	1	8850	99803		(Ref 3-21)	
2900	99600		6-18	1	2900	99804		(Ref 3-23)	
2900	99602		6-7	1	2900	99805		3-22	1
2900	99604		6-5	1	6700	99806		(Ref 2-16)	
2900	99606		6-22	1	2900	99807		(Ref 2-13)	
2900	99611		2-15	2	6700	99809		(Ref 5-21)	
2900	99613		2-18	1	2900	99814		(Ref 5-31)	
2900	99617		2-9	1	6700	99815		(Ref 5-19)	
2900	99618		3-19	1	6700	99816		(Ref 5-16)	
2900	99621		(Ref 1-3)		2900	99817		(Ref 3-4)	
2900	99625		6-48	1	6700	99818		(Ref 3-5)	
2900	99629		6-47	1	2900	99819		(Ref 4-18)	
2900	99630		6-9	1	6700	99820		(Ref 2-2)	
2900	99631		4-11	1	2900	99821		(Ref 2-11)	
2900	99644		10-19	1	6700	99822		(Ref 2-7)	
2900	99645		10-24	1	6500	99823		(Ref 1-4)	
2900	99646		10-22	1	6700	99824		(Ref 3-10)	
2900	99655		3-13	1	6700	99825		(Ref 3-11)	
2900	99656		5-3B	1	8880	99826		(Ref 7-5)	
2900	99657		5-3C	1	6700	99828		(Ref 10-9)	
2900	99667		7-25	1	2900	99829		10-5	1
2900	99668		(Ref 7-24)		6700	99830		(Ref 6-34)	
2900	99673		9-6	2	2900	99831		(Ref 9-17)	
2900	99678		9-10	2	2900	99832		(Ref 9-4)	
2900	99681		9-14	1	2900	99833		9-22	2
2900	99697		7-18	1	2900	99834		(Ref 10-16)	
2900	99698		7-22	1	2900	99859		4-6	1
2900	99699		7-9	1	3400	99860		(Ref 4-1)	
2900	99700		7-10	1	3330	99863		1-7	1
2900	99701		7-11	1	2900	99870		7-1	1
2900	99702		7-7	1	2900	99876		6-1	1
2900	99703		7-6	1	2900	99878		7-16	2
2900	99704		7-8	1	2900	99882		6-38	2
3320	99705		7-12	1	6700	99883		(Ref 11-5)	
2900	99706		7-21	1	6700	99884		(Ref 7-23)	
2900	99707		3-16	1	2900	99907		3-1	1
2900	99708		4-21	1	2900	99914		9-27	1
2900	99709		7-20	1	2900	99916		9-37	1
2900	99714		9-1B	1	2900	99929		9-8	1
2900	99715		9-1C	1	2900	99932		6-32	1
2900	99716		9-1A	1	2900	99934		(Ref 6-4)	
3360	99723		11-7	1		99937		6-6	2
3320	99732		11-1	1				6-10	
3360	99741		(Ref 9-25)						
2900	99744		9-29	AR					
2900	99745		9-33	AR					
2900	99746		10-8	1					