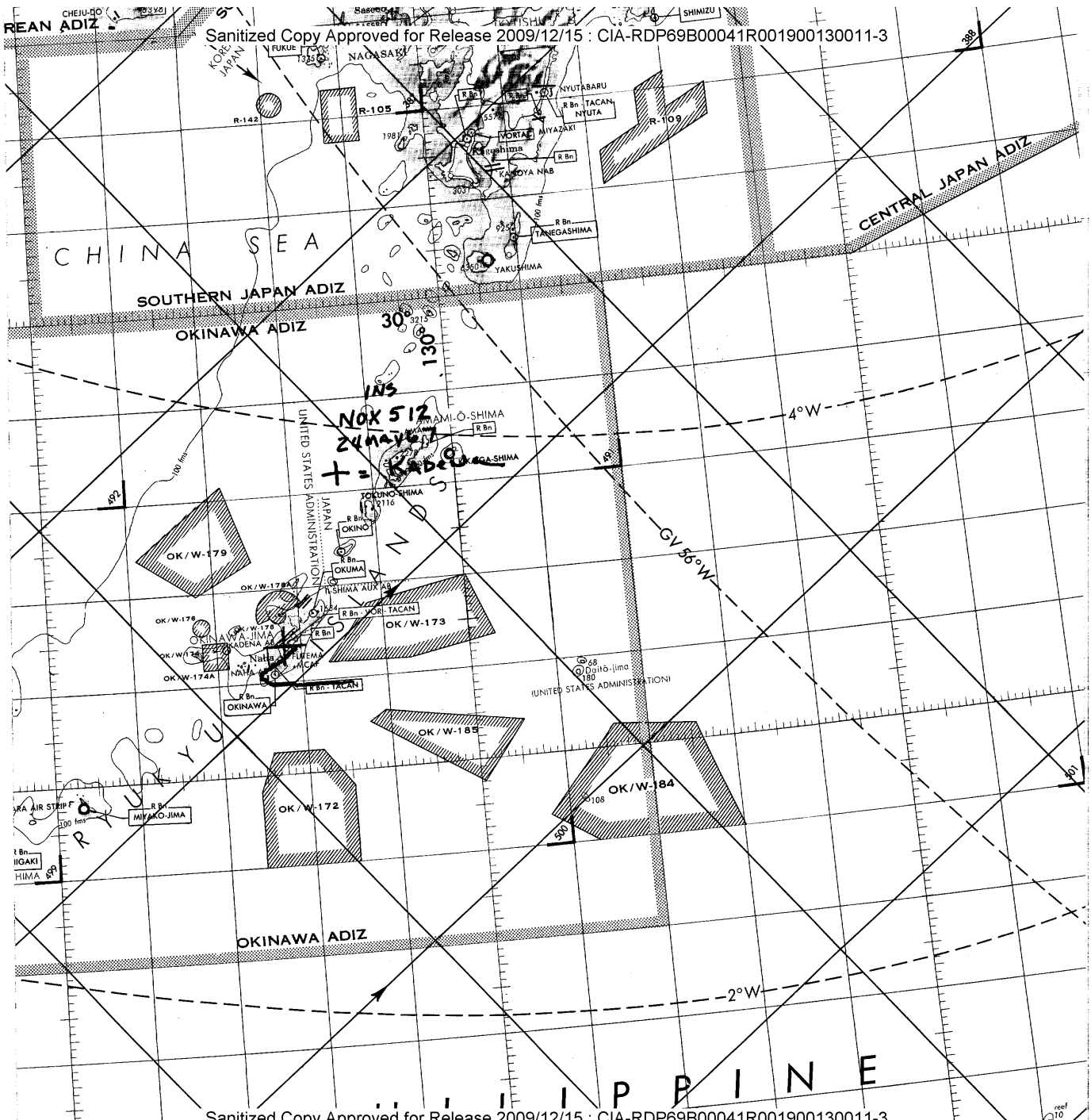
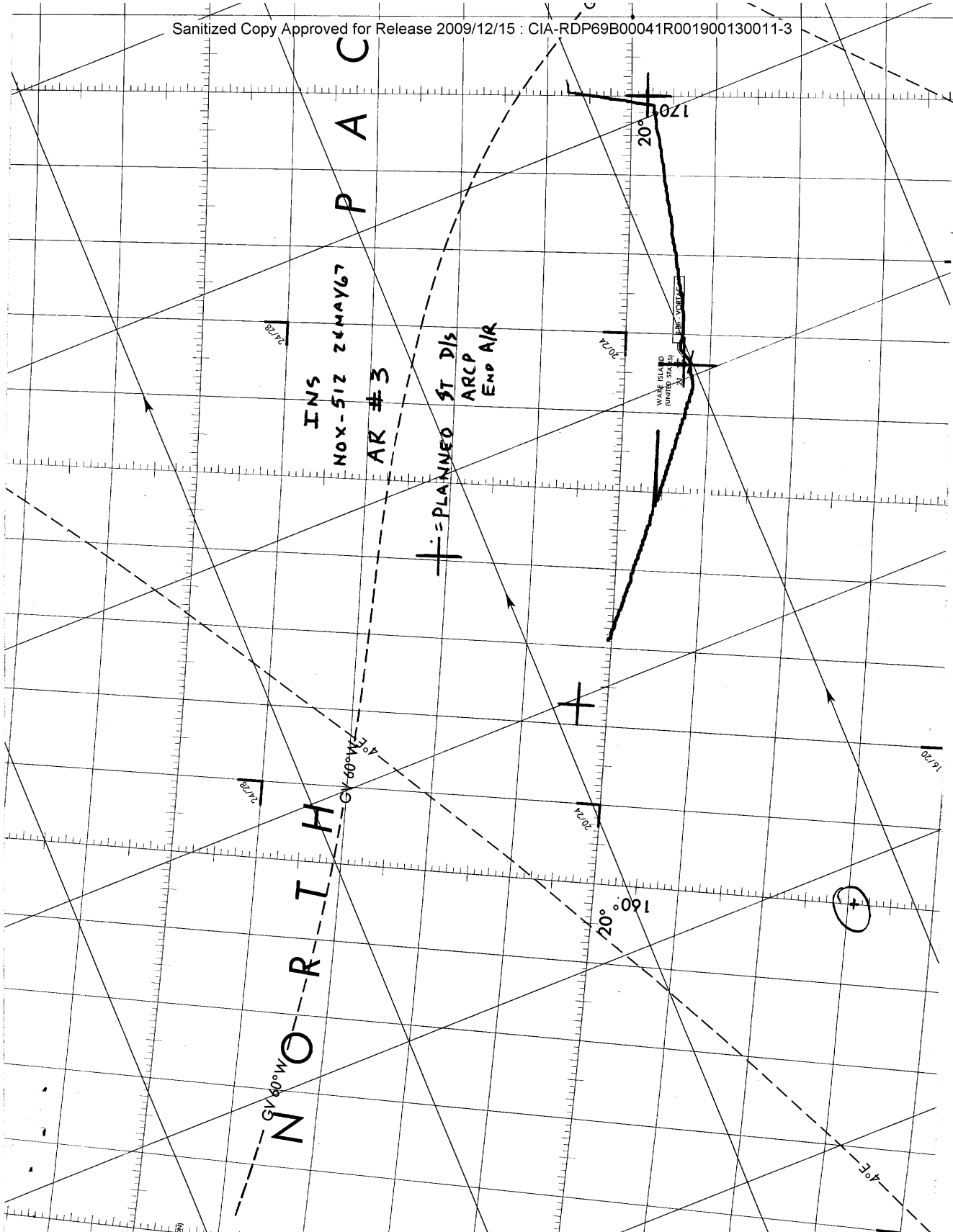


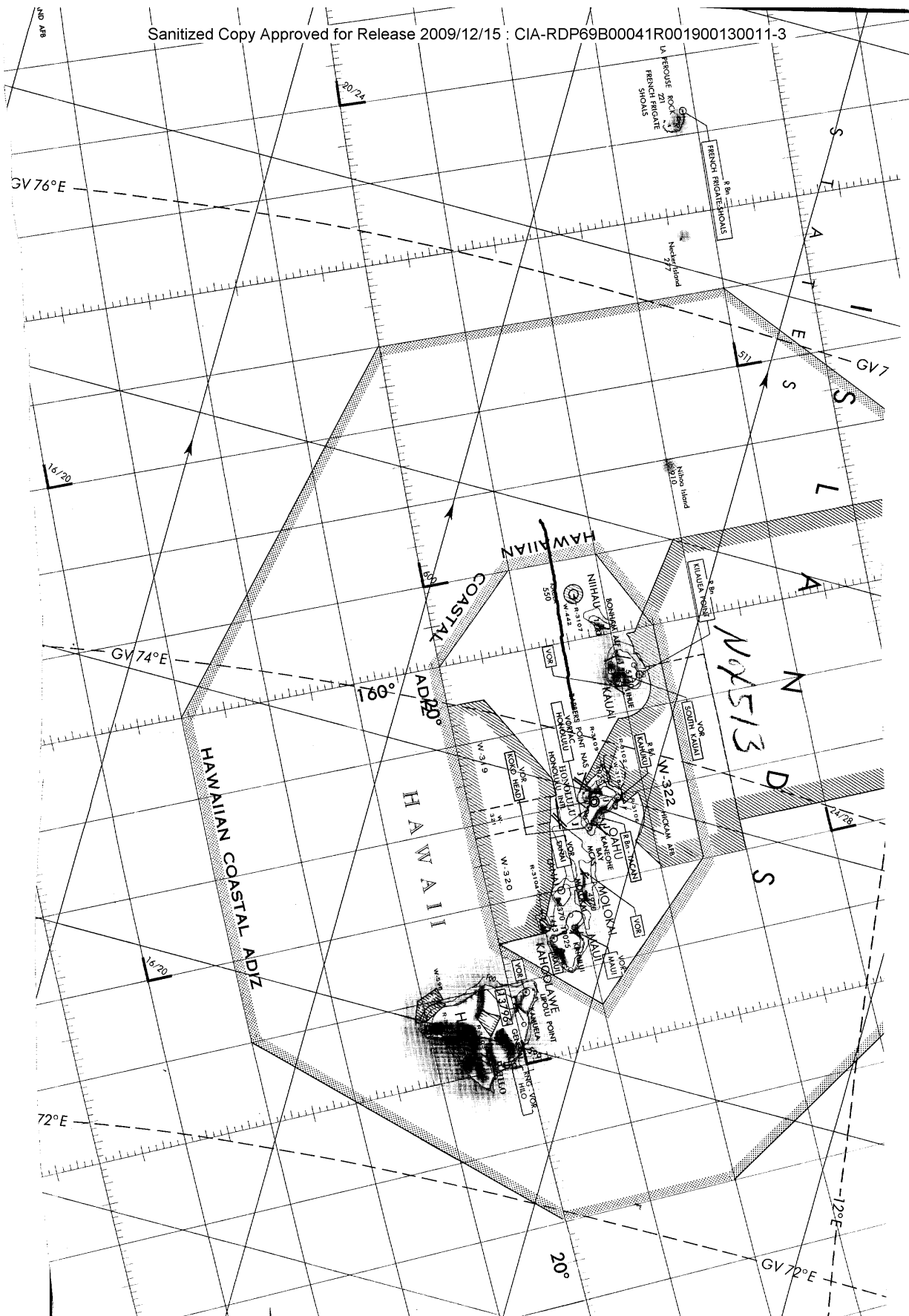
25 YEAR RE-REVIEW

**Page Denied**

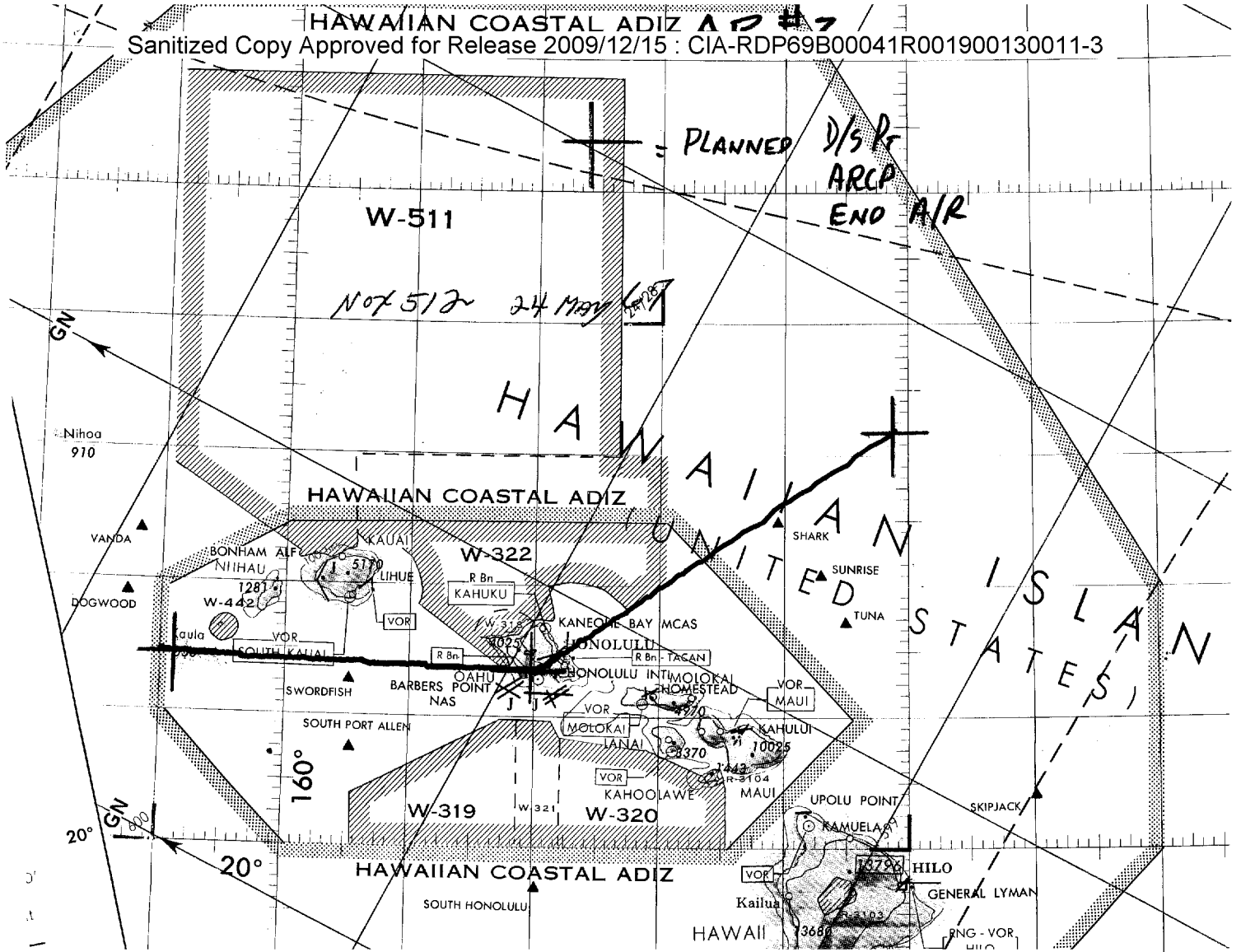




**Page Denied**



**Page Denied**

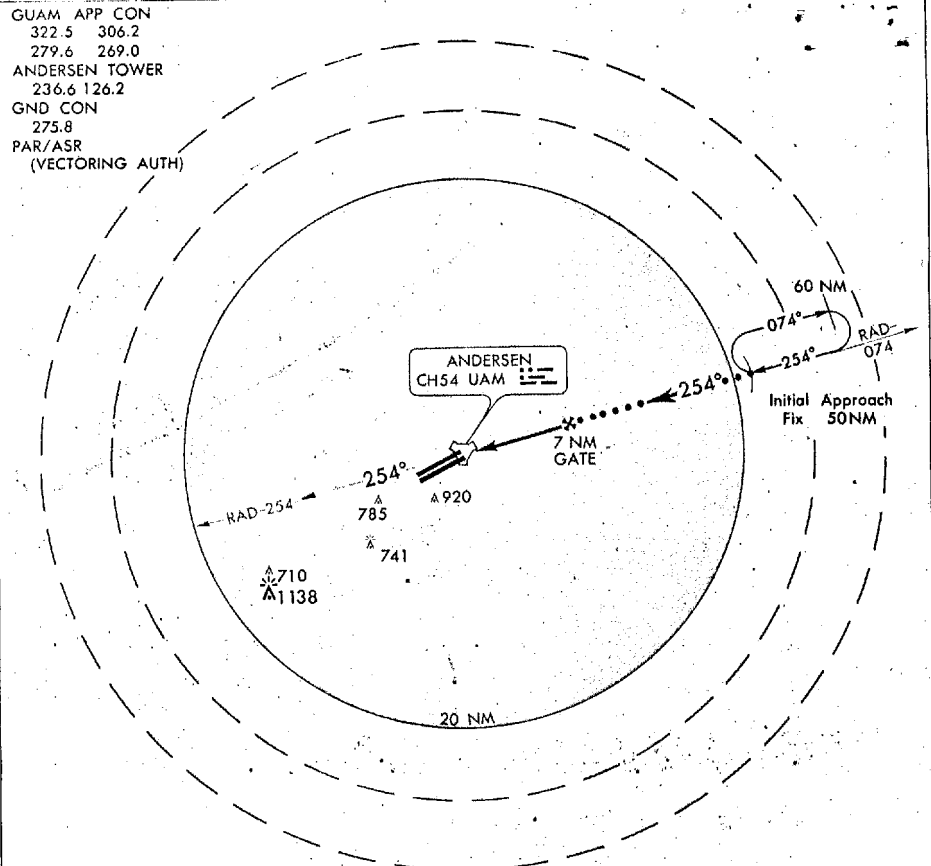


**KAYTON**

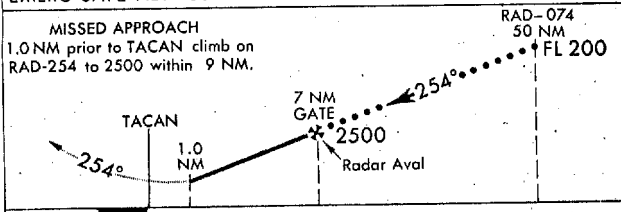
ANDERSEN AFB

Sanitized Copy Approved for Release 2009/12/15 : CIA-RDP69B00041R001900130011-3

GUAM APP CON  
 322.5 306.2  
 279.6 269.0  
 ANDERSEN TOWER  
 236.6 126.2  
 GND CON  
 275.8  
 PAR/ASR  
 (VECTURING AUTH)

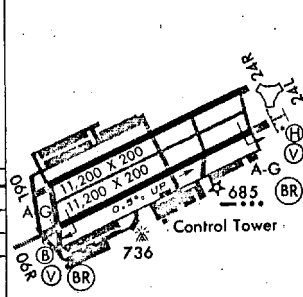


TA 18,000  
 EMERG SAFE ALT 100 NM 2400  
 MIN SAFE ALT 25 NM 2400



FIELD ELEV 624

LANDING MINIMA	
Straight-in	924 MSL : 300-1
Circling	1124 MSL : 500-1



**ASR-OUT**  
 15 @ 350 - @ 10 110/10

T/O Rwy 24 1.0% down  
 All touchdown points  
 are 1.0% down

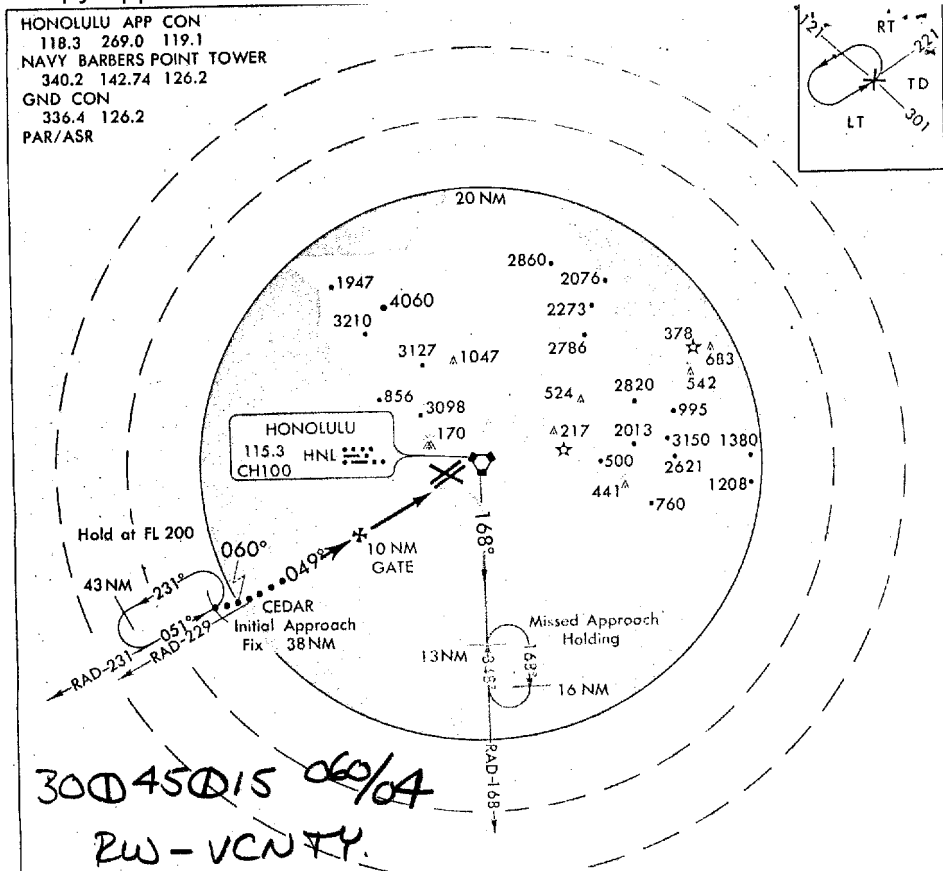
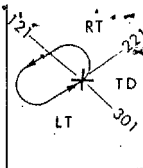
TACAN-RWY 24L 13°35'N-144°55'E 9 GUAM I., MARIANA ISLANDS ANDERSEN AFB

Sanitized Copy Approved for Release 2009/12/15 : CIA-RDP69B00041R001900130011-3



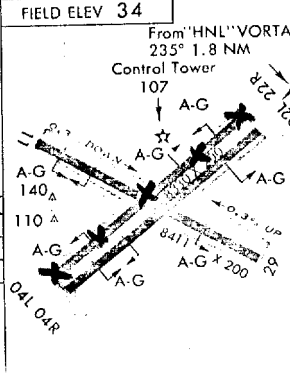
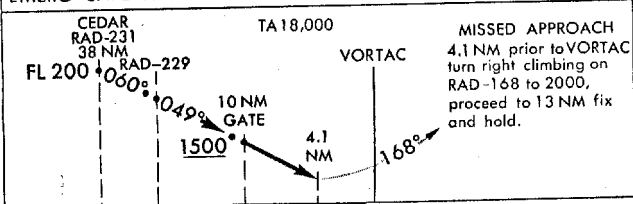
BARBERS POINT NAS

HONOLULU APP CON  
 118.3 269.0 119.1  
 NAVY BARBERS POINT TOWER  
 340.2 142.74 126.2  
 GND CON  
 336.4 126.2  
 PAR/ASR



EMERG SAFE ALT 100 NM 7800

MIN SAFE ALT 25 NM 5100



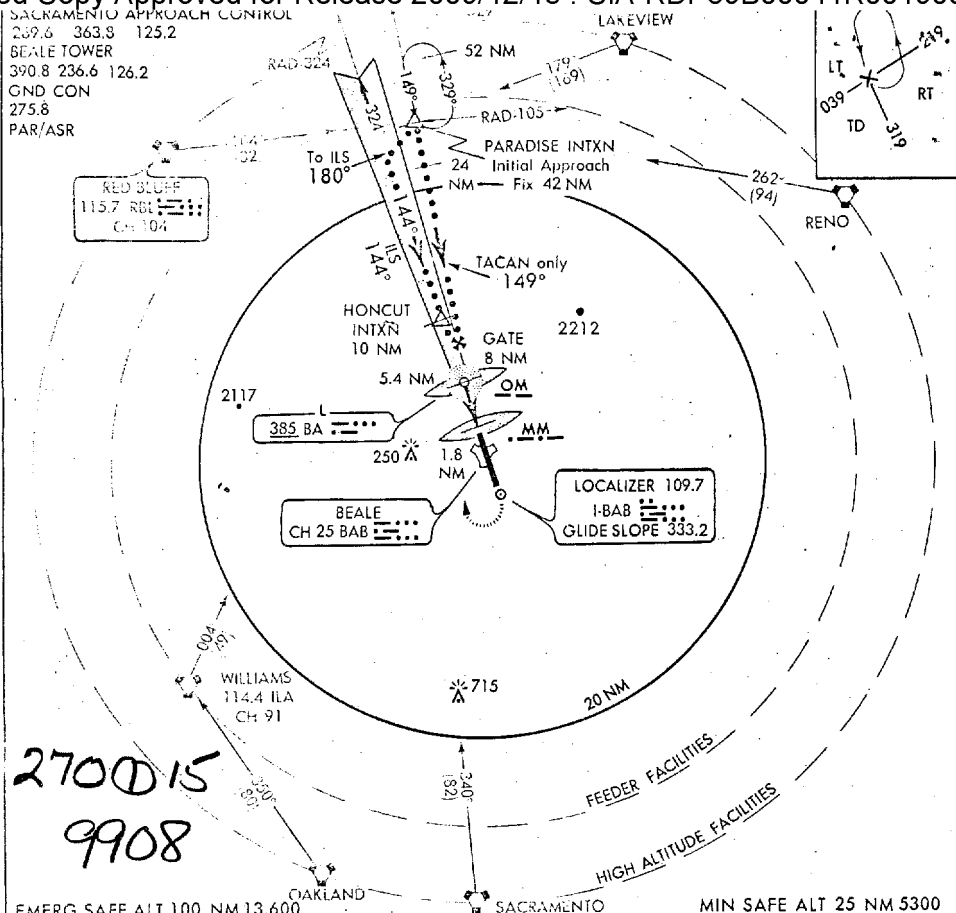
LANDING MINIMA	
Str-in Rwy 04R	434 MSL : 400-1
Circling*	534 MSL : 500-1 1/2

\*Maneuvering for circling approach North and NW of field not authorized due to terrain to 492' ASL within 1.7 NM of field.  
 NOTE: Aircraft may be RADAR vectored to Initial Approach Fix. GCA available from Initial Approach Fix.

TACAN **ASR / BAR OUT** 153° 05' W

HAWAII, OAHU I., HAWAII  
 BARBERS POINT NAS

TACAN/ILS RWY 14  
 Sanitized Copy Approved for Release 2009/12/15 : CIA-RDP69B00041R001900130011-3



EMERG SAFE ALT 100 NM 13,600      SACRAMENTO      MIN SAFE ALT 25 NM 5300

PARADISE INTXN  
 RAD-329  
 42 NM  
 FL 200

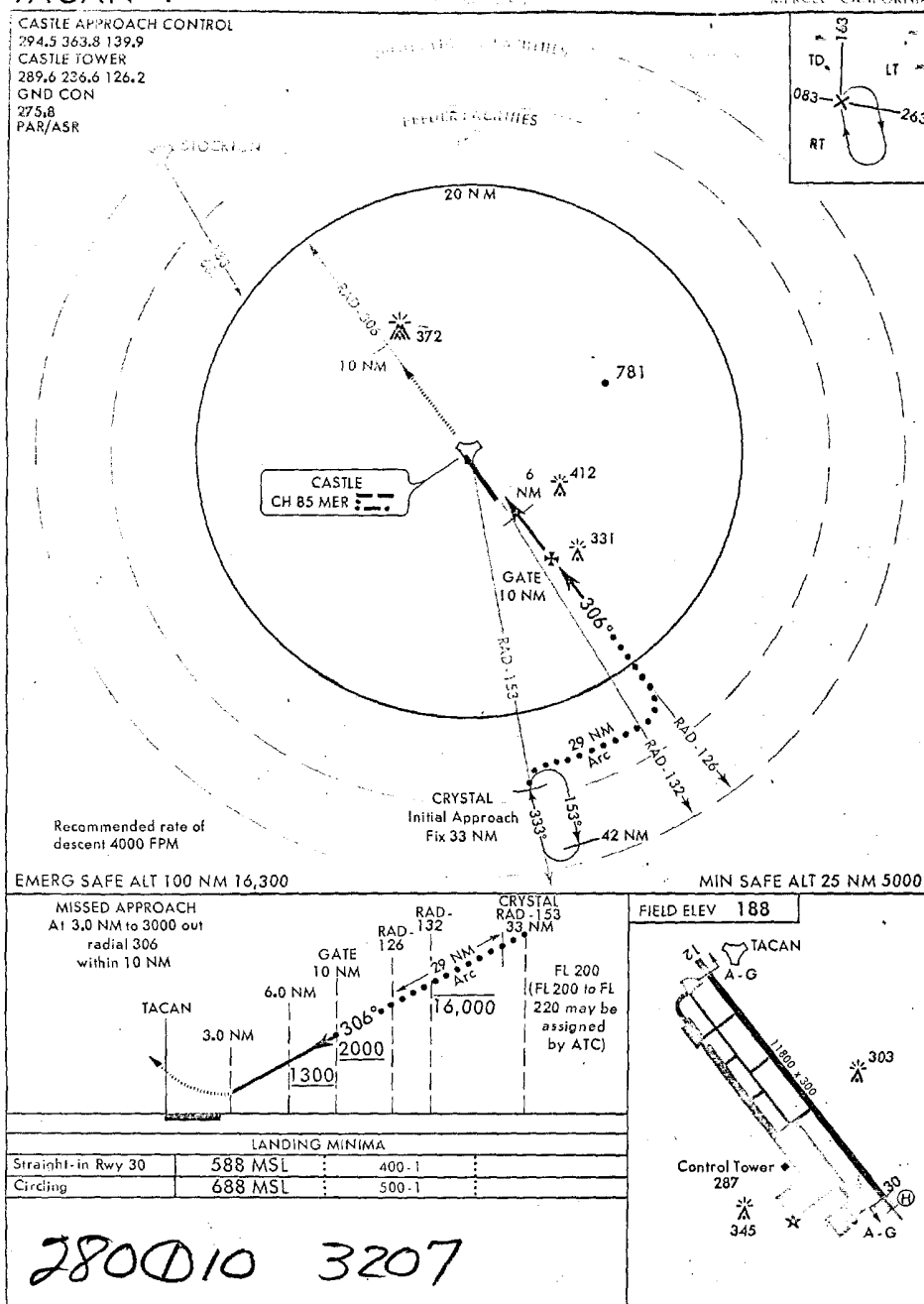
MISSED APPROACH  
 Out 144° to 1000 then right to 290° climbing to 4000 to intercept 10 NM TACAN Arc via 10 NM TACAN Arc to HONCUT INTXN

FIELD ELEV 113  
 144° 4.1 NM From LOM  
 Control Tower 215  
 TACAN 180°  
 A-G 32

LANDING MINIMA			
Straight-in ILS	313 MSL	200-½	
Circling	613 MSL	500-1	
Straight-in TACAN	413 MSL	300-1	
Straight-in W/O G/S			

LOM to Localizer Missed Approach 4.1 NM					
Knots	120	140	160	180	200
Min. Sec	2:03	1:45	1:32	1:22	1:14

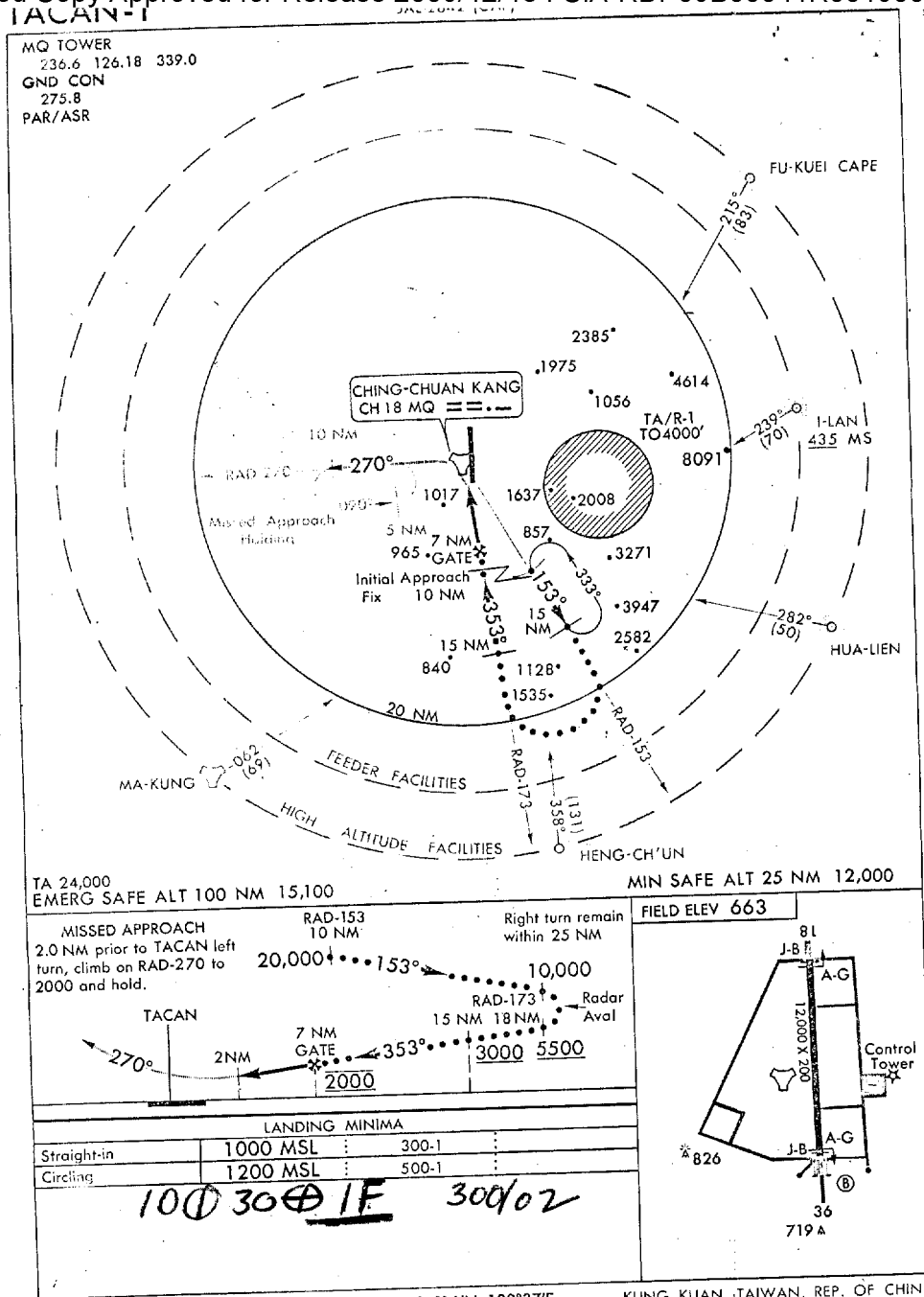
TACAN/ILS RWY 14      39°08'N - 121°26'W      MARYSVILLE, CALIFORNIA  
 Sanitized Copy Approved for Release 2009/12/15 : CIA-RDP69B00041R001900130011-3



TACAN-1

37° 23' N - 120° 34' W

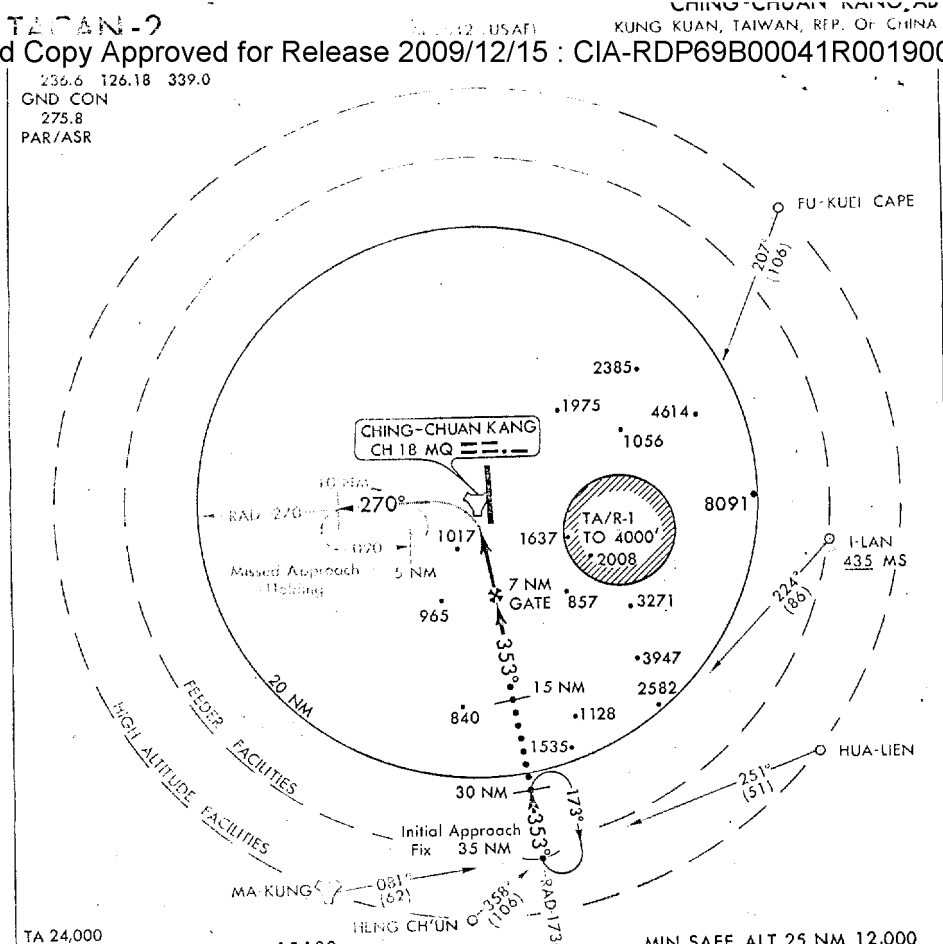
MERCED, CALIFORNIA  
 CASTLE AFB



TACAN-1

24°16'N-120°37'E KUNG KUAN, TAIWAN, REP. OF CHINA CHING-CHUAN KANG AB

TACAN-2  
 Sanitized Copy Approved for Release 2009/12/15 : CIA-RDP69B00041R001900130011-3



MISSED APPROACH  
 2.0 NM prior to TACAN left turn climb on RAD-270 to 2000 and hold.

270°  
 270°

TACAN  
 2.0 NM

7 NM GATE  
 2000

15 NM  
 3000

Radar Aval  
 35 NM  
 RAD -173  
 20,000

FIELD ELEV 663

Control Tower

A-G  
 J-B  
 81  
 12000 X 200  
 36  
 719 A

\* 826

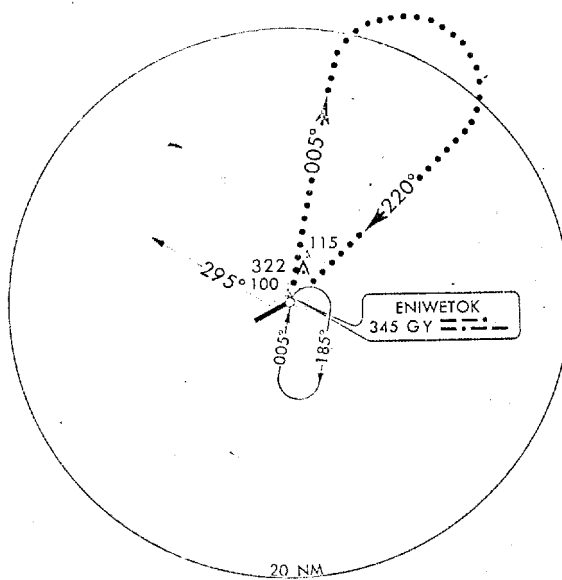
LANDING MINIMA	
Straight-in	1000 MSL : 300-1
Circling	1200 MSL : 500-1

10 @ 30 @ IF 300/02

TACAN-2  
 Sanitized Copy Approved for Release 2009/12/15 : CIA-RDP69B00041R001900130011-3

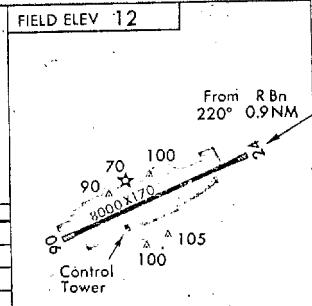
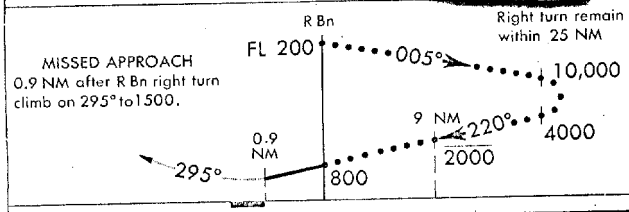
Sanitized Copy Approved for Release 2009/12/15 : CIA-RDP69B00041R001900130011-3

FOR APP SVC CALL  
WAKE RADIO  
17906.5 13354.5  
ENIWETOK TOWER  
236.6 142.74  
134.1 126.2  
GND CON  
275.8



16 @ 300 @ 15 079/10  
TEMPO 12 @ 16 @ 5 RW

EMERG SAFE ALT 100 NM 1300 ~~000/20 G 25~~ MIN SAFE ALT 25 NM 1300



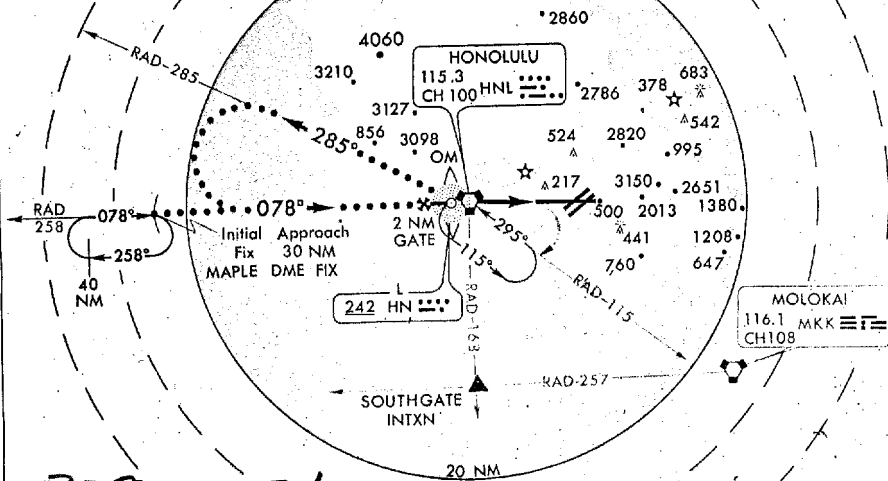
LANDING MINIMA	
Straight-in	NOT AUTHORIZED
Circling	500 MSL 500-1 1500
CAUTION: Prior permission from Headquarters Air Force Western Test Range (WTZ) Vandenberg AFB, Calif. 93437 required for entry into Eniwetok Closed Area.	
R Bn to Missed Approach 0.9 NM	
Knots	120 140 160 180 200
Min: Sec	0:27 0:23 0:20 0:18 0:16

ADF 11°21'N-162°20'E ENIWETOK ATOLL, MARSHALL ISLANDS ENIWETOK AAF

Sanitized Copy Approved for Release 2009/12/15 : CIA-RDP69B00041R001900130011-3

Sanitized Copy Approved for Release 2009/12/15 : CIA-RDP69B00041R001900130011-3

HONOLULU APP CON  
 118.3W 269.0W  
 119.1E 353.7E  
 HONOLULU TOWER  
 118.1 257.8  
 GND CON  
 121.9 348.6  
 RAMP CON  
 121.8  
 ASR  
 (VECTORIZING AUTH)

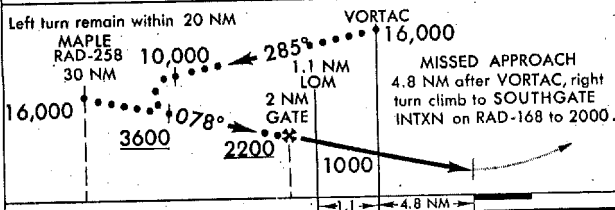


*300 x 5 070/12*  
*inter 3000 15 RW - 070/15G22*  
*TCU OVR HTLS*

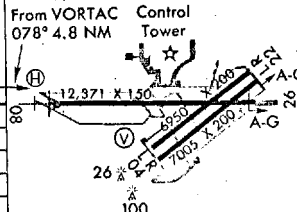
NOTE: Do not descend below 2200 until over the 1.1 NM DME (LOM) inbound due NAS BARBERS POINT 1500 jet traffic pattern.

TA 18,000  
 EMERG SAFE ALT 100 NM 12,100

MIN SAFE ALT 25 NM 5100



FIELD ELEV 13



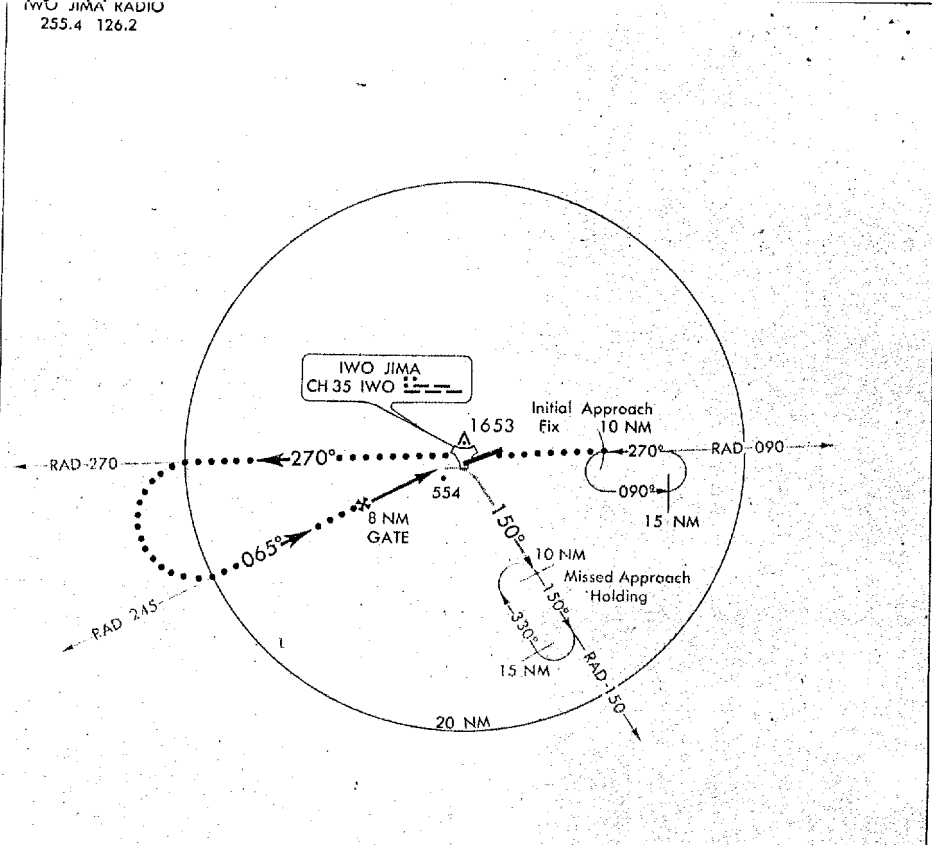
LANDING MINIMA	
Str-in-TACAN	400 MSL : 400-1
Str-in-VOR *	500 MSL : 500-1
Circling **	600 MSL : 600-2

\* Straight-in not authorized unless A/C receives 1.1 NM DME or LOM.  
 \*\* Circling to South only.

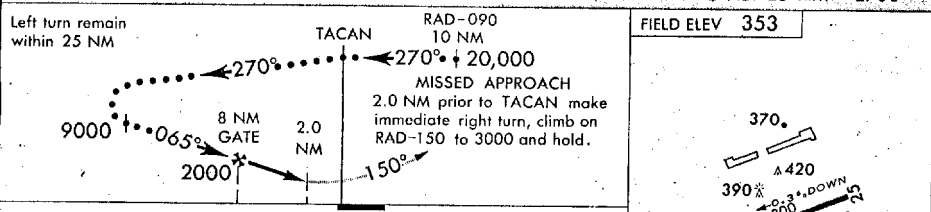
VORTAC to Missed Approach 4.8 NM					
Knots	120	140	160	180	200
Min: Sec	2:24	2:03	1:48	1:36	1:26

TACAN  
IWO JIMA RADIO  
255.4 126.2

IWO JIMA AR



TA 18,000  
EMERG SAFE ALT 100 NM 4200  
MIN SAFE ALT 25 NM 2700

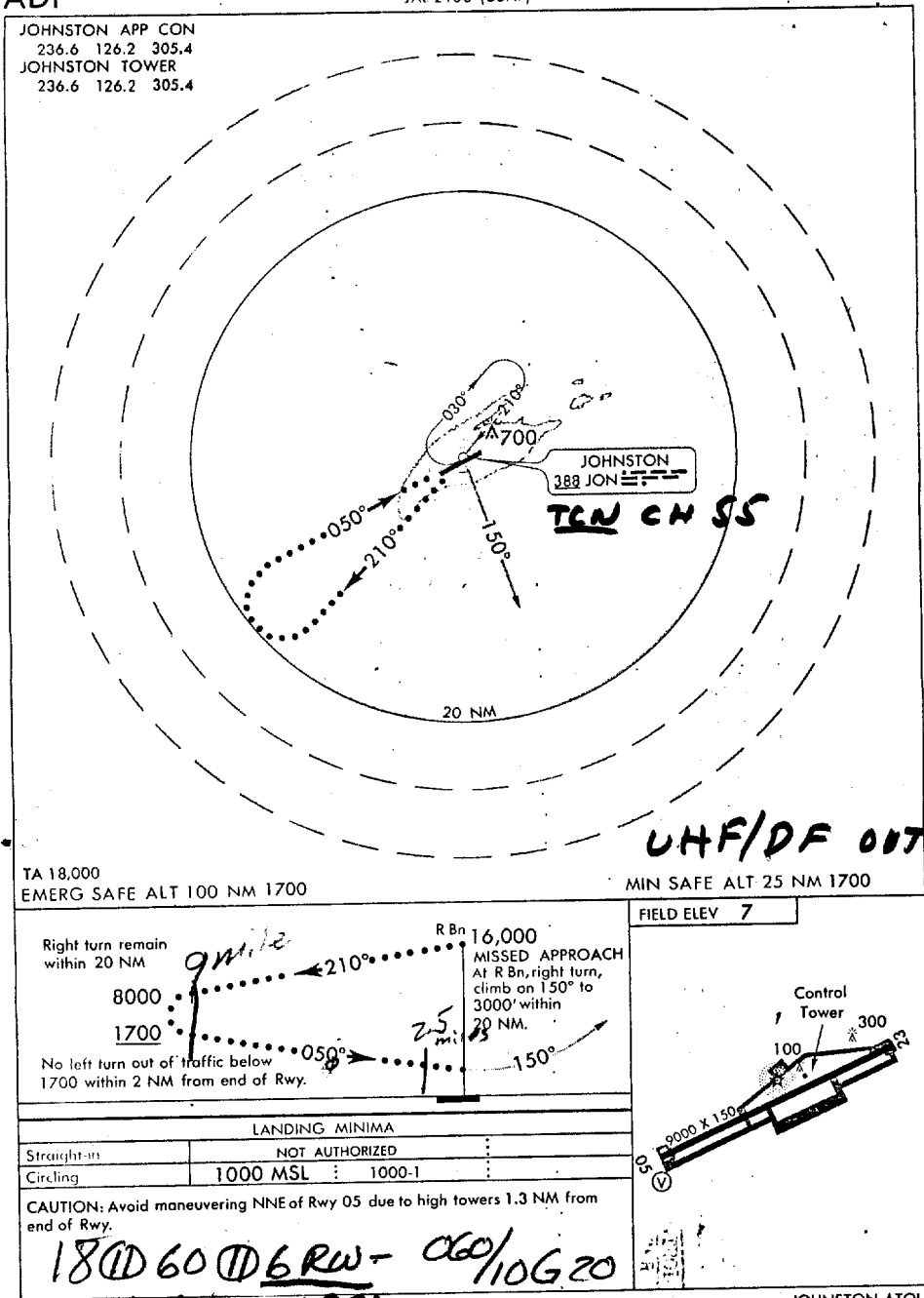


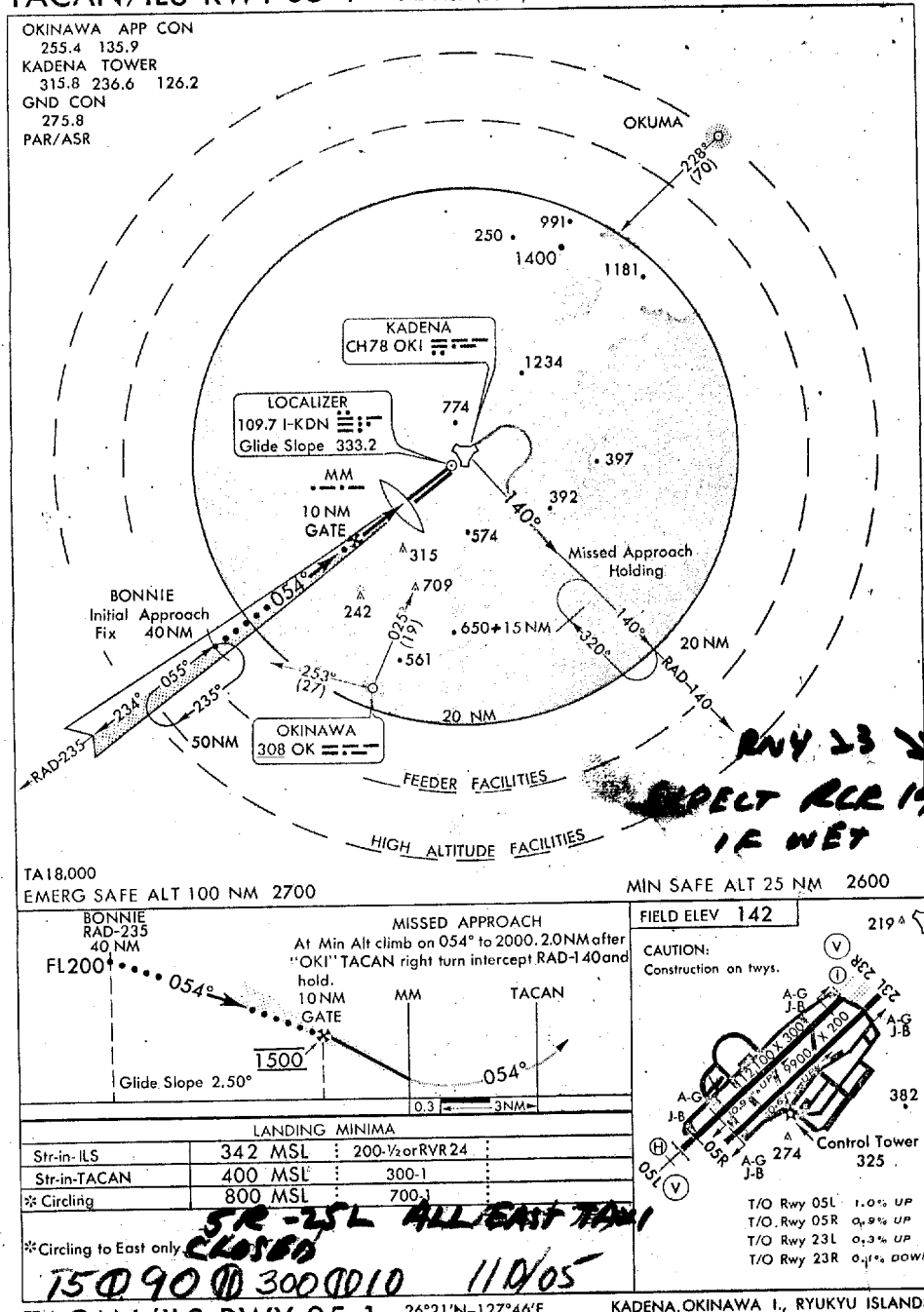
LANDING MINIMA	
Straight-in	900 MSL 500-2
Circling *	900 MSL 500-2

\* Circling to South only.  
**200VAR 07 080/10**

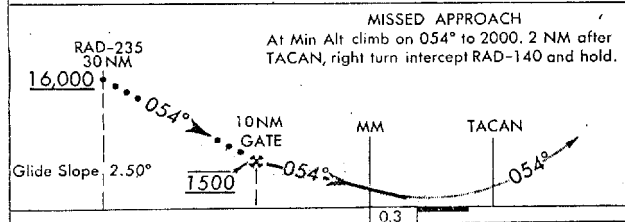
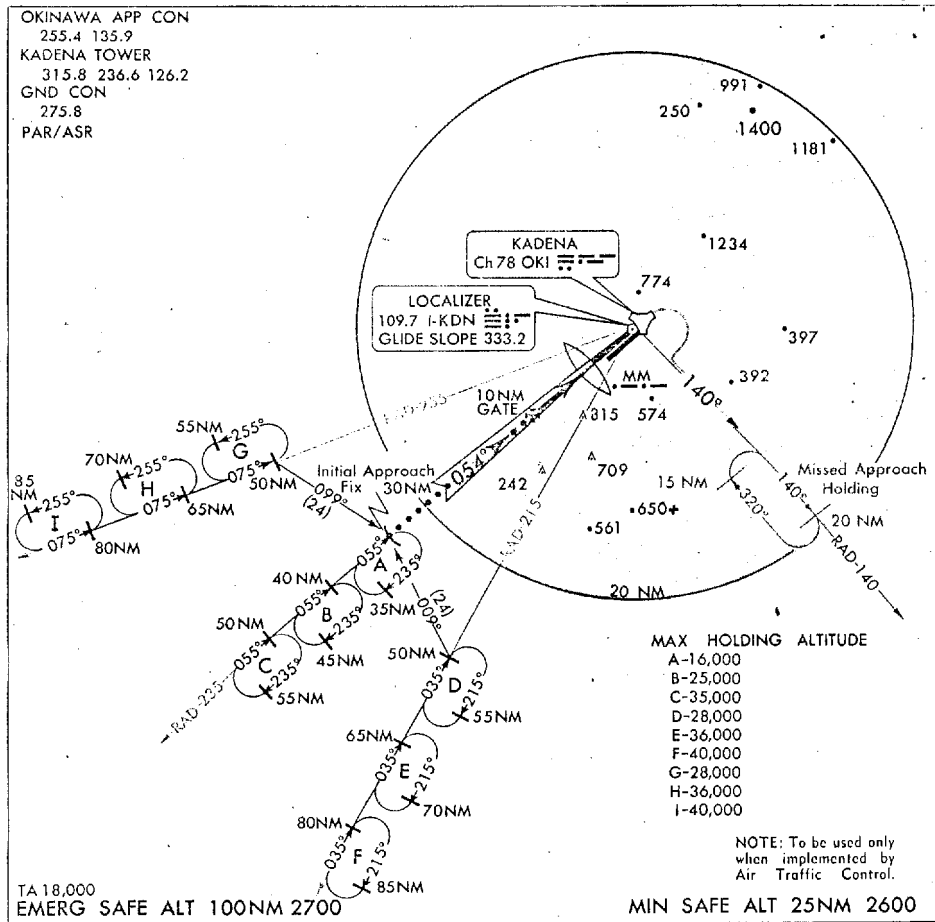
TACAN **TACAN WBAK** 17°N-141°19'E 95 IWO JIMA I., VOLCANO ISLANDS IWO JIMA AB





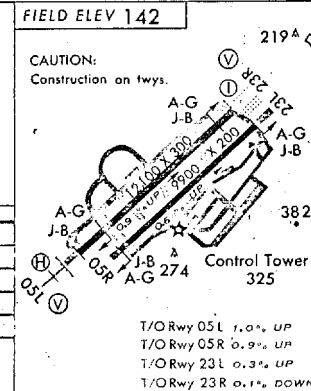


VALL-1 JAL-1457 (USAF) KADENA, OKINAWA I., RYUKYU ISLANDS



LANDING MINIMA	
Str-in-ILS	342 MSL : 200-1/2 or RVR 24
Str-in-TACAN	400 MSL : 300-1
* Circling	800 MSL : 700-1
Str-in-LOC	NOT AUTHORIZED

\* Circling to East only.



7500 9000 3000 10 110/05

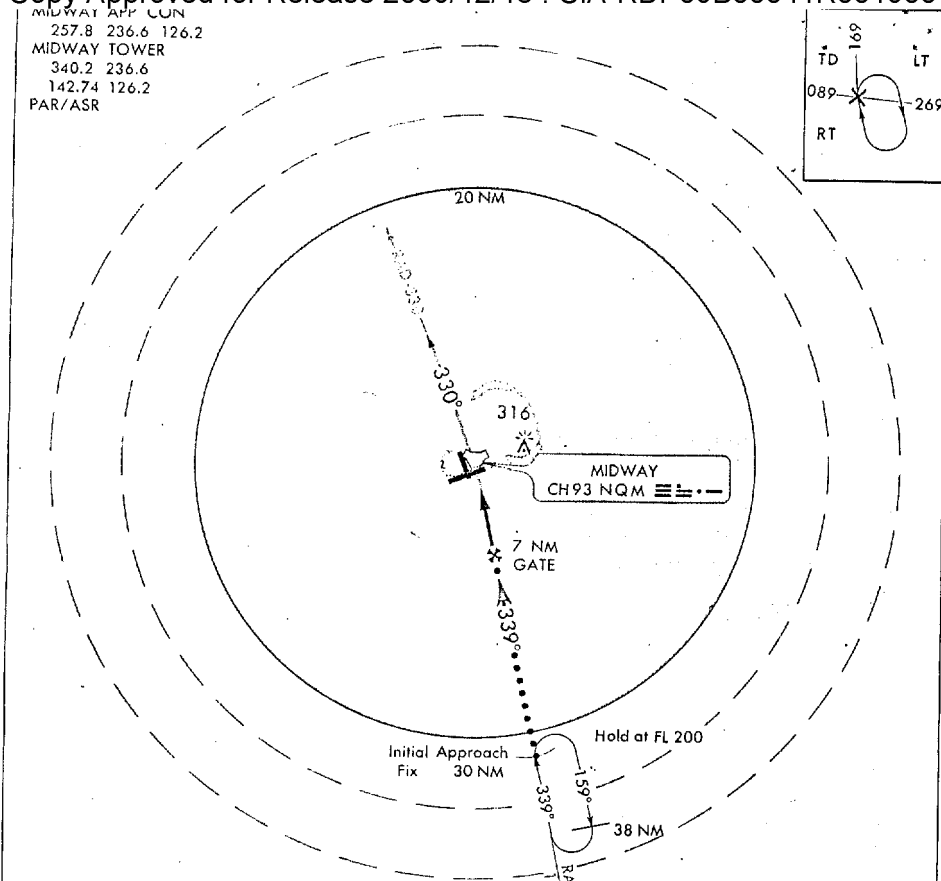
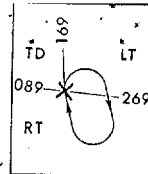
VALL-1 26°21'N-127°46'E KADENA, OKINAWA I., RYUKYU ISLANDS

TACAN-2

146

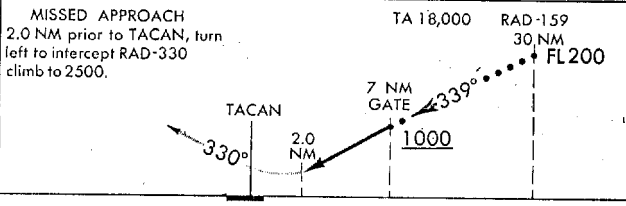
MIDWAY NS (SAND I FLD)

MIDWAY APP CON  
257.8 236.6 126.2  
MIDWAY TOWER  
340.2 236.6  
142.74 126.2  
PAR/ASR



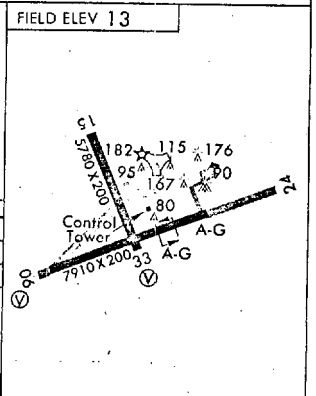
EMERG SAFE ALT 100 NM 1700

MIN SAFE ALT 25 NM 1400



LANDING MINIMA			
Str-in-Rwy 33	313 MSL	300-1½	4000-2
Circling	613 MSL	600-1½	6000-2

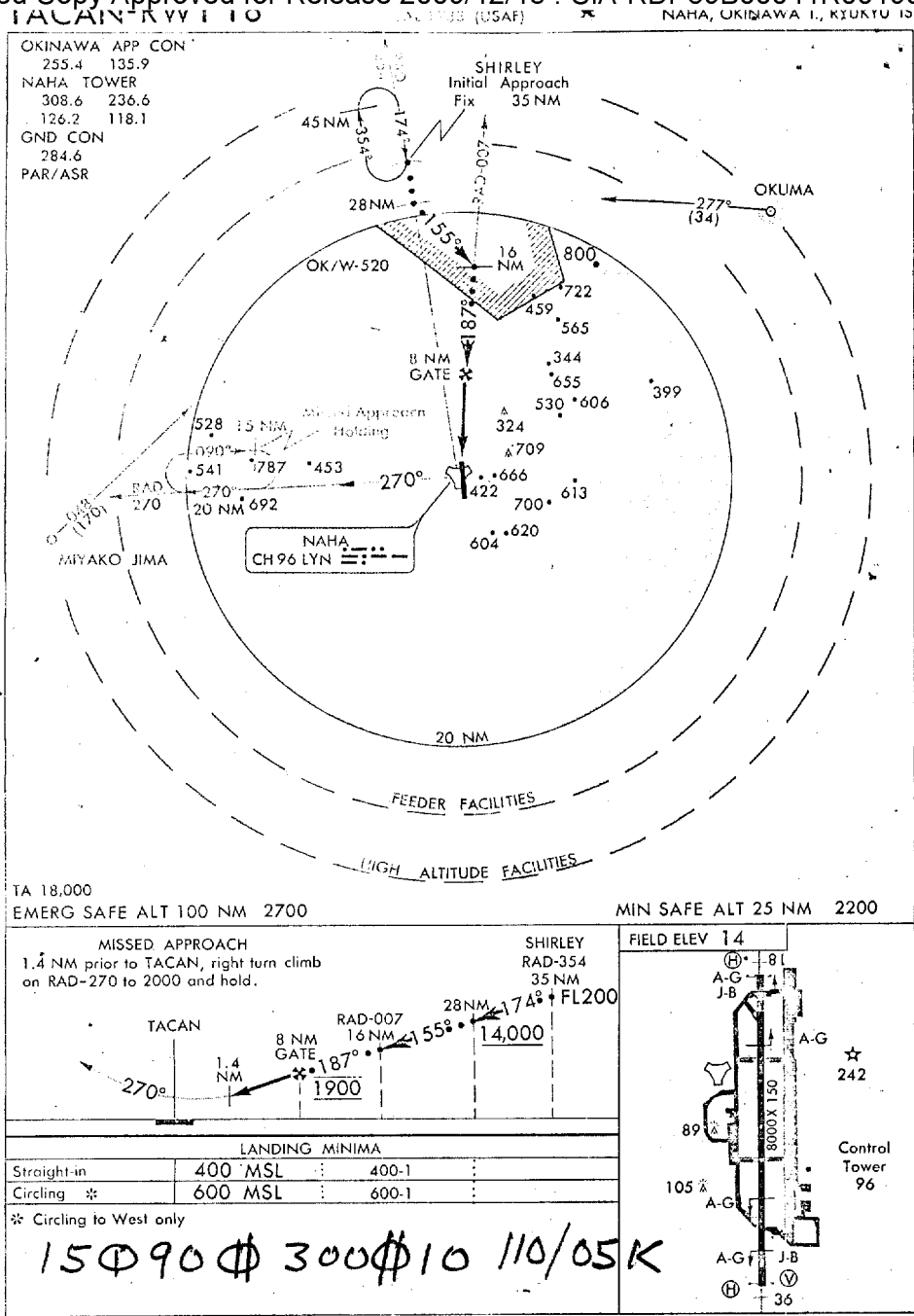
250 350 10 11/12 G 22  
CAUTION: Towers to 182' at field and 316' 2 NM East of field.



TACAN-2

28°12'N-177°23'W

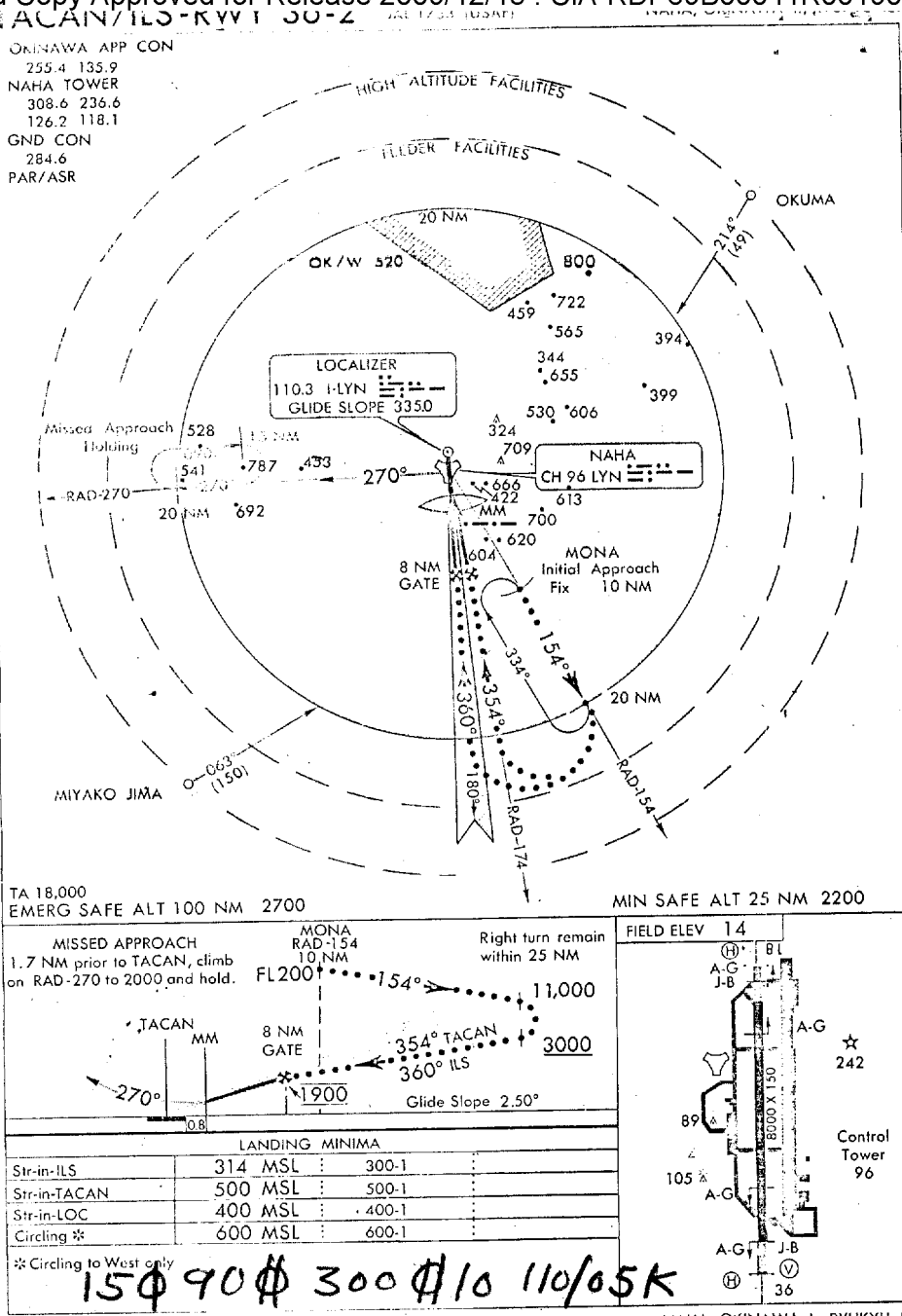
SAND I, MIDWAY ISLANDS



TACAN-RWY18

26°11'N-127°39'E

NAHA, OKINAWA I., RYUKYU IS.

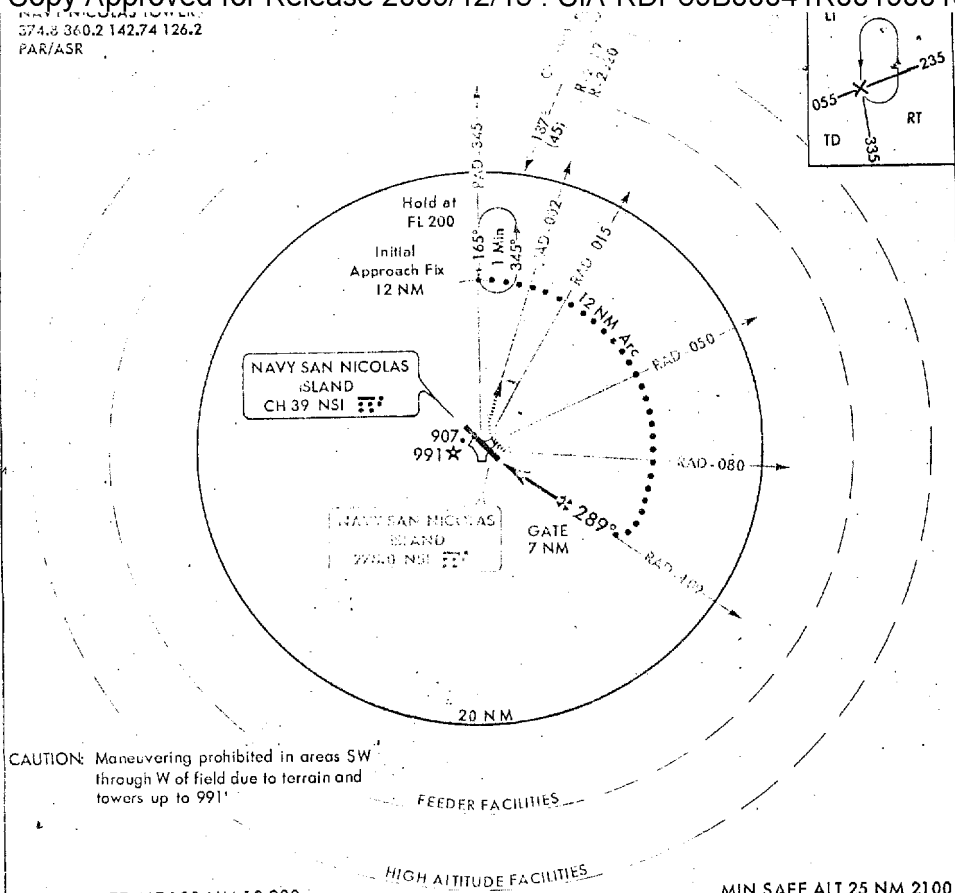


TACAN

NAVY SAN NICOLAS ISLAND  
 374.8 360.2 142.74 126.2  
 PAR/ASR

142.74 USN

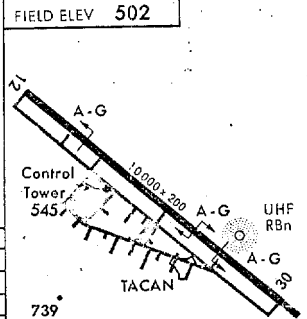
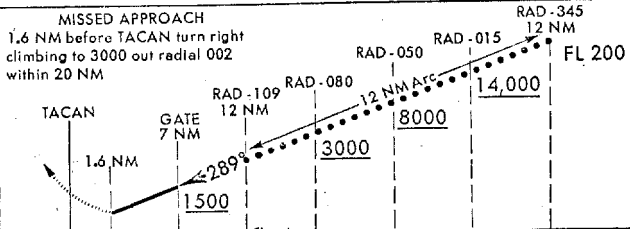
SAN NICOLAS ISLAND OLF  
 SAN NICOLAS ISLAND, CALIFORNIA



CAUTION: Maneuvering prohibited in areas SW through W of field due to terrain and towers up to 991'

EMERG SAFE ALT 100 NM 10,900

MIN SAFE ALT 25 NM 2100



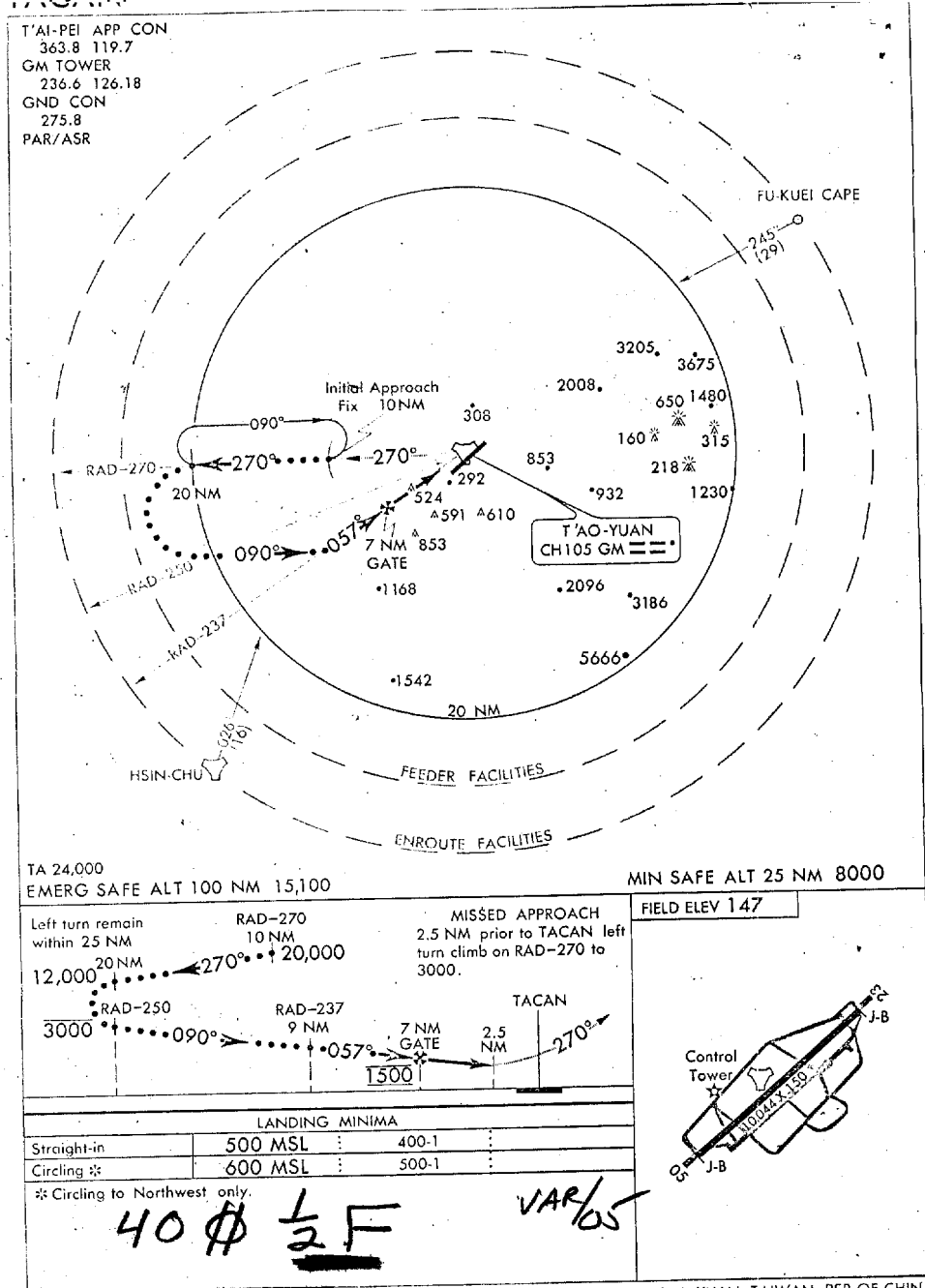
LANDING MINIMA		
Straight-in Rwy 30	802 MSL	300-1
Circling	902 MSL	400-2

**4 @ 1/2 FH 9905  
 ASR PAR OUT**

TACAN

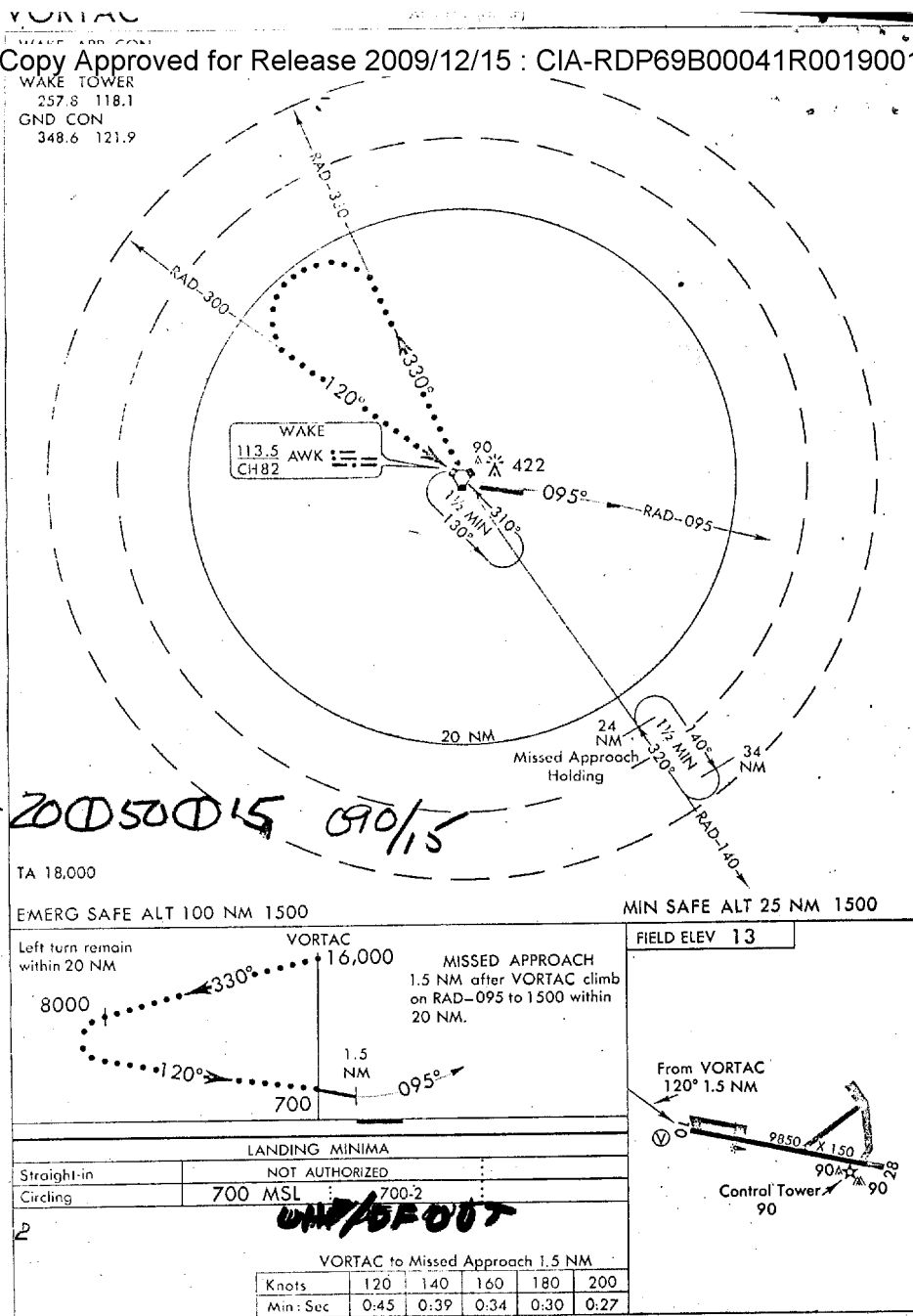
33° 14' N - 119° 28' W

SAN NICOLAS ISLAND, CALIFORNIA  
 SAN NICOLAS ISLAND OLF

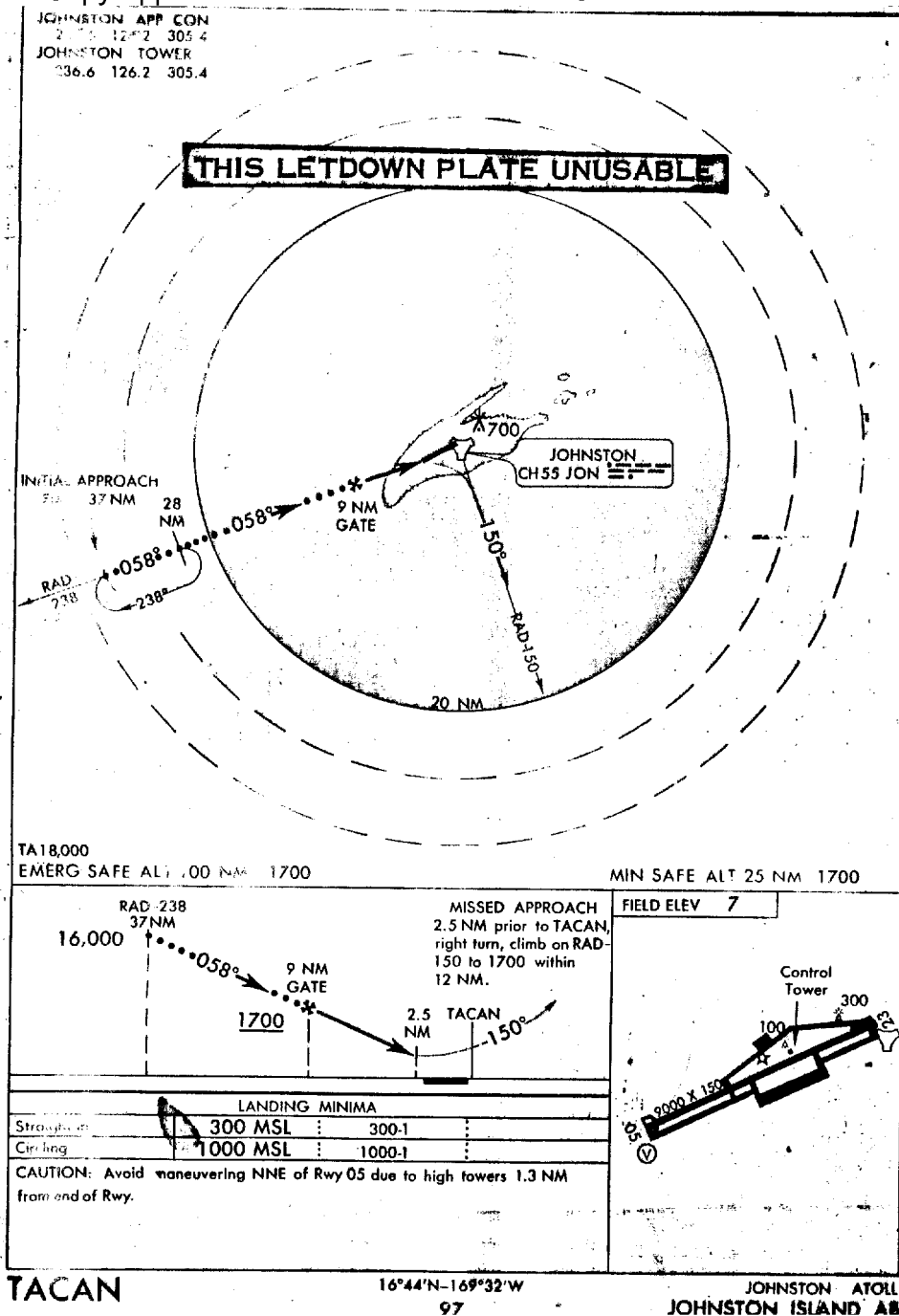




Sanitized Copy Approved for Release 2009/12/15 : CIA-RDP69B00041R001900130011-3

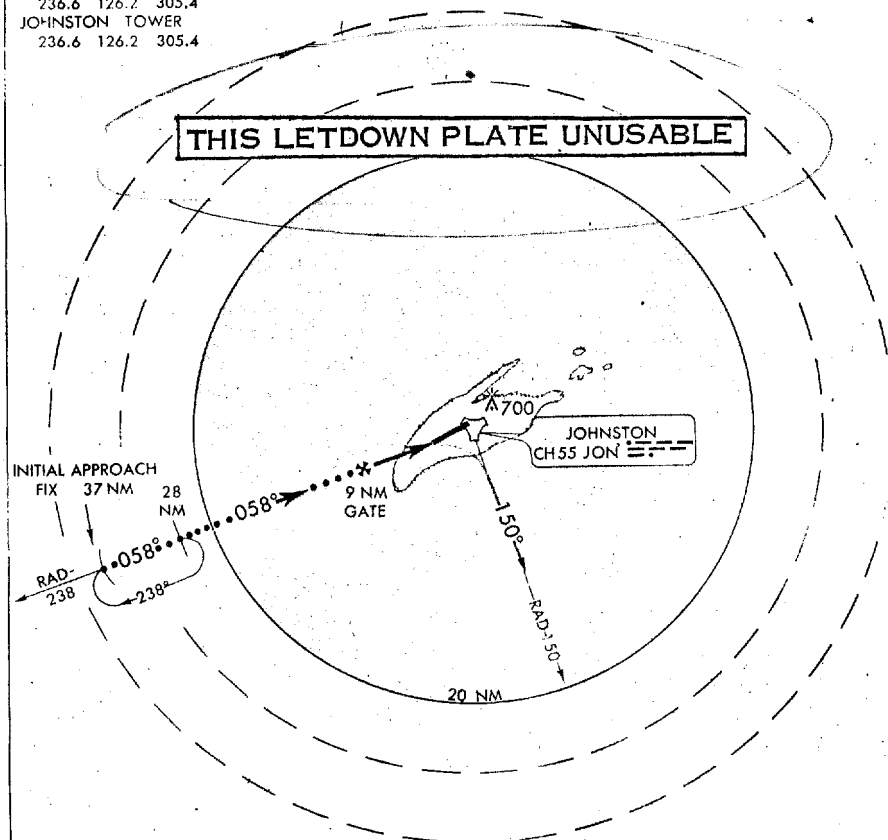


Sanitized Copy Approved for Release 2009/12/15 : CIA-RDP69B00041R001900130011-3



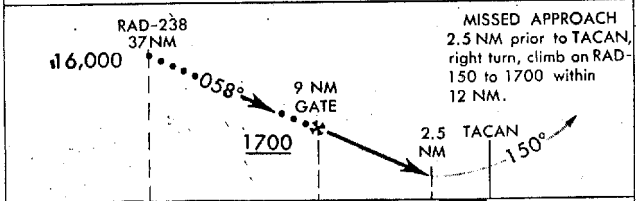
TACAN JAL-2150 (USAF) JOHNSTON ISLAND AB  
 JOHNSTON ATOLL  
 Sanitized Copy Approved for Release 2009/12/15 : CIA-RDP69B00041R001900130011-3

236.6 126.2 305.4  
 JOHNSTON TOWER  
 236.6 126.2 305.4

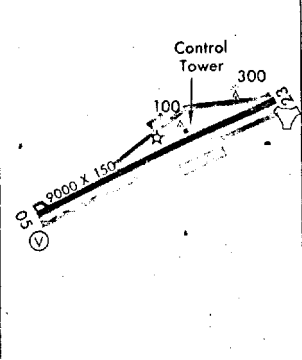


TA18,000  
 EMERG SAFE ALT 100 NM 1700

MIN SAFE ALT 25 NM 1700



FIELD ELEV 7



LANDING MINIMA	
Straight-in	300 MSL : 300-1
Circling	1000 MSL : 1000-1

CAUTION: Avoid maneuvering NNE of Rwy 05 due to high towers 1.3 NM from end of Rwy.

TACAN 16°44'N-169°32'W JOHNSTON ATOLL  
 JOHNSTON ISLAND AB  
 97

Sanitized Copy Approved for Release 2009/12/15 : CIA-RDP69B00041R001900130011-3

AT	TIME	TH	RB	ZN	ZN-RB CHANGE
POS 06 ARLP	1+13	243°	230°		+1.4
POS 07 EAR	1+36	245°	229°		+1.5
ST CC	1+53	245°	224°		+1.5
HOWGOZIT	2+14	240°	216°		+1.3
ST DS	2+28	236°	212°		+1.1
POS 08 ARLP	2+40	235°	210°		+1.1
POS 09 EAR	3+02	273	172°		+1.1
ST CC	3+19	271°	175°		+1.1
HOWGOZIT	3+33	269°	175°		+1.1
HOWGOZIT	3+47	266°	177°		+1.1
HOWGOZIT	4+01	264°	178°		± 0
ST DS	4+06	262°	179°		± 0
POS 10 ARLP	4+18	260°	181°		± 0
POS 11 EAR	4+44	288°	155°		± 0
ST CC	5+02	286°	157°		+1.1
HOWGOZIT	5+15	283°	161°		+1.1
HOWGOZIT	5+28	280°	164°		+1.1
HOWGOZIT	5+42	277°	167°		+1.1
ST DS	5+49	275°	168°		+1.1
KADENA(12)	6+02	273°	170°		+1.1
POS 05-A	+51				

PREVIOUS EDITIONS OF THIS FORM MAY BE USED.

Sanitized Copy Approved for Release 2009/12/15 : CIA-RDP69B00041R001900130011-3

Sanitized Copy Approved for Release 2009/12/15 : CIA-RDP69B00041R001900130011-3

CIT = 353 (REF DAY) KTAS = 1777 BASIC RF = 4300		CIT = 374 (HUI DAY) KTAS = 1807 BASIC RF = 4000		MACH 3.1			
FUEL REMAIN	DIST/MIN TO 10K LB	FUEL REMAIN	DIST/MIN TO 10K LB	ALT	KEAS	FUEL FLOW	NMI/KLB
		46	1760 / 59	76.5	368	22.9	40
		44	1680 / 56	76.9	364	22.4	41
		42	1598 / 53	77.3	360	22.0	42
		40	1517 / 50	77.8	356	21.5	42
46	1933 / 65	38	1428 / 48	78.2	353	20.8	43
44	1848 / 62	36	1340 / 45	78.6	349	20.4	44
42	1760 / 59	34	1255 / 42	79.1	345	20.0	45
40	1668 / 56	32	1162 / 39	79.5	341	19.6	46
38	1570 / 53	30	1073 / 36	79.9	337	19.2	47
36	1480 / 50	28	979 / 32	80.4	334	18.8	48
34	1390 / 46	26	880 / 29	80.9	330	18.3	49
32	1290 / 43			81.3	327	18.0	50
		24	781 / 26	81.6	325	17.8	51
30	1191 / 40			81.8	324	17.5	52
28	1090 / 36	22	680 / 22	82.3	320	17.1	53
26	990 / 33	20	574 / 19	82.8	317	16.7	54
24	883 / 30	18	470 / 16	83.4	312	16.3	55
22	780 / 26	16	361 / 12	83.9	309	15.9	57
20	654 / 22	14	249 / 8	84.4	304	15.5	58
18	543 / 18	12	125 / 4	85.0	300	15.1	60
16	410 / 14	10	0 / 0	85.0	300	14.0	65
14	285 / 10			85.0	300	13.2	69
		8		85.0	300	12.8	72
12	140 / 4			85.0	300	12.5	73
10	0 / 0	6		85.0	300	12.0	76
8				85.0	300	11.4	79
6				85.0	300	11.1	82

30° BANK ANGLE

INCREASE POWER TO  
MAX. A/B. ALTITUDE LOSS  
IS APPROXIMATELY 2000 FT.  
AND FUEL FLOWS WILL  
INCREASE AS GIVEN IN TABLE .

	CIT	353	374
	FUEL	△	FUEL FLOWS
	35	7.3	7.7
	30	6.8	7.3
	20	5.9	6.5

BASIS: FLT MANUAL APPENDIX PART V  
DATED 1 MAY 1967

F 200-93 (2) (b)

Sanitized Copy Approved for Release 2009/12/15 : CIA-RDP69B00041R001900130011-3

CIT = 353 (REF. DAY) KTAS = 1777 BASIC RF = 4900		CIT = 374 (HUI DAY) KTAS = 1807 BASIC RF = 4600		MACH 3.1			
FUEL REMAIN	DIST/MIN TO 10K LB	FUEL REMAIN	DIST/MIN TO 10K LB	ALT	KEAS	FUEL FLOW	NMI/KLB
		46	2022 / 67	73.7	393	19.9	45
		44	1930 / 64	74.0	390	19.5	46
48	2249 / 76	42	1837 / 61	74.3	387	18.7	48
46	2156 / 73	40	1741 / 58	74.7	384	18.3	49
44	2058 / 70	38	1643 / 55	75.1	380	18.0	50
42	1959 / 66	36	1543 / 51	75.5	376	17.6	51
40	1857 / 63	34	1442 / 48	75.9	372	17.3	52
38	1752 / 59	32	1338 / 44	76.3	369	16.9	53
36	1645 / 56	30	1231 / 41	76.7	366	16.5	54
34	1538 / 52	28	1122 / 37	77.1	362	16.2	56
32	1423 / 48	26	1010 / 34	77.5	358	15.8	57
30	1315 / 44			77.9	355	15.4	58
		24	895 / 30	78.1	354	15.3	59
28	1195 / 40			78.3	352	15.1	60
26	1076 / 36	22	778 / 26	78.7	349	14.7	61
24	955 / 32	20	657 / 22	79.2	344	14.4	63
22	828 / 28	18	533 / 18	79.7	340	14.0	64
20	703 / 24	16	405 / 13	80.2	336	13.6	66
18	567 / 19	14	274 / 9	80.7	332	13.3	68
16	432 / 15	12	139 / 5	81.3	328	12.9	70
14	292 / 10	10	0 / 0	81.9	323	12.5	72
12	148 / 5	8		82.5	319	12.2	74
10	0 / 0	6		83.1	315	11.8	76
8				83.7	310	11.5	79
6				84.4	304	11.1	81

30° BANK ANGLE

ADD POWER TO MAINTAIN ALTITUDE AND KEAS, TO OBTAIN FUEL FLOWS FOR REQUIRED POWER, ADD INCREMENTS GIVEN IN TABLE.

CIT	353	374
FUEL	Δ	FUEL FLOWS
35	4.7	7.7
30	4.4	7.2
20	4.0	6.4

BASIS: FLT MANUAL APPENDIX PART V  
DATED 1 MAY 1967

F 200-93(1)(b)

Sanitized Copy Approved for Release 2009/12/15 : CIA-RDP69B00041R001900130011-3

Sanitized Copy Approved for Release 2009/12/15 : CIA-RDP69B00041R001900130011-3

25X1

**Page Denied**

Next 1 Page(s) In Document Denied

Sanitized Copy Approved for Release 2009/12/15 : CIA-RDP69B00041R001900130011-3

UHF CHANNELIZATION

13 Jul 65

- 1. 367.5 Ground Control
  - 2. 342.3 Bud
  - 3. 335.8 Saucy Primary
  - 4. 393.0 Boxer Control - Chase Primary AR
  - 5. 381.3 Godson Control
  - 6. 379.5 Flight Test & Bungalow Secondary
  - 7. 298.3 AAR Freq
  - 8. 341.4 Bungalow Primary Sky Bird
  - 9. 296.7 Area A - ARTCC 311.0
  - 10. 364.8 Area B - ARTCC
  - 11. 369.9 Area C - ARTCC
  - 12. 321.3 Area D - ARTCC ADC KASAR
  - 13. 255.9 Pilot to Forecaster 364.2
  - 14. 287.3 D/F (Nightlife)
  - 15. 398.2 Saucy Secondary
  - 16. 371.5 ARC-50 - Primary AR Freq
  - 17. 392.5 ARC-50 - Secondary AR Freq
  - 18. Pilot to Dispatcher
- (Yuletide Primary 260.1 and Yuletide Secondary 363.8)

VHF

- 1. 119.2 Bud & Bungalow Primary
  - 2. 126.05 Yuletide Primary
  - 3. 118.7 Yuletide Secondary
  - 4. 134.1 GCA Primary
  - 5. 125.8 GCA Secondary
  - 6. 121.5 Emergency
  - 7. 126.7 VFR Enroute
- Beale AFB  
" Pullman Control  
393.0

AREA NAV AIDS

- 1. AGNES MCY 113.8
- 2. JINKS MCY CHANNEL 85
- 3. SWAB XTB 377 KC
- 4. MERCURY MCY 326 KC



on HF something was keying  
BW several times