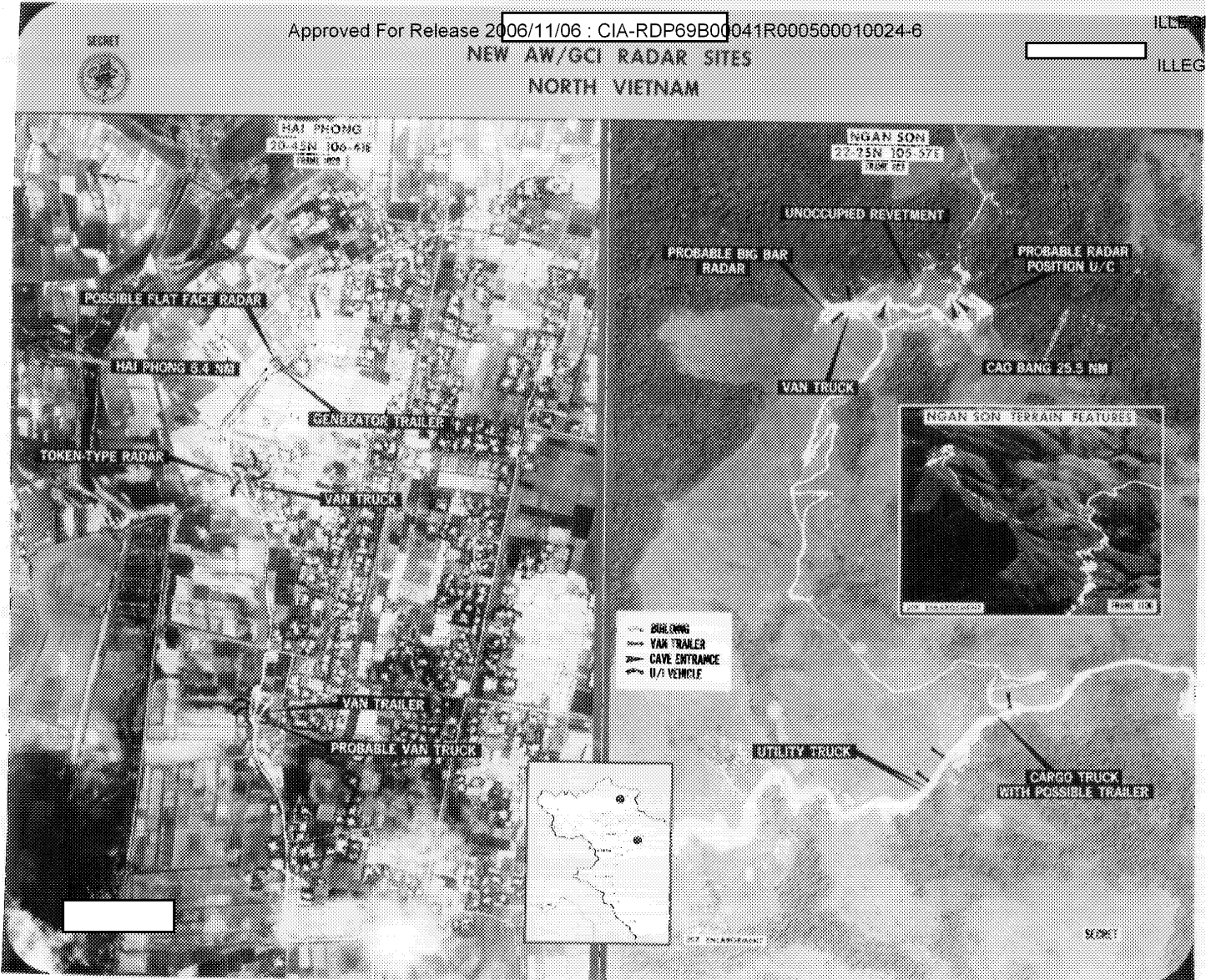


ILLEGIB
ILLEGIB



25X1

Approved For Release 2006/11/06 : CIA-RDP69B00041R000500010024-6

25X1

Page Denied

Approved For Release 2006/11/06 : CIA-RDP69B00041R000500010024-6

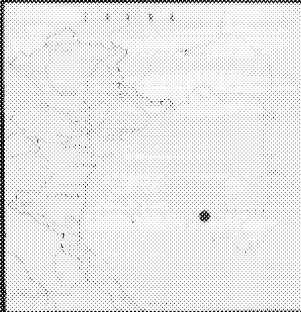
ILLEGIB

SECRET

Approved For Release 2006/11/06 : CIA-RDP69B00041R000500010024-6

PEI-LI PORT FACILITIES
TUNG-HAI-TAN, CHINA
19-06N 108-37E

ILLEGIB



04 0016 01240

4 SHANGHAI PTF

SECRET

ILLEGIB

ILLEGIB

SECRET

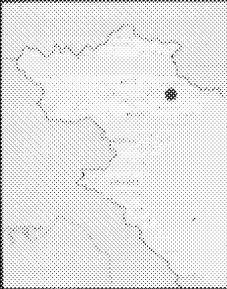
Approved For Release 2006/11/06 : CIA-RDP69B00041R000500010024-6

RAILROAD CLASSIFICATION AND REPAIR YARDS
UNDER CONSTRUCTION
LANG DANG, NORTH VIETNAM



ILLEGIB

21-39N 106-34E



PROBABLE
TURNTABLE/ROUNDHOUSE

RAIL SPUR

MAINTENANCE/REPAIR
BUILDINGS

MAINTENANCE/REPAIR
BUILDINGS

6-TRACK
CLASSIFICATION
YARD

TURNING WYE

LANG SON
14 NM

SECRET



ILLEGIB

C110

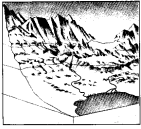
LEGEND

RELIEF PORTRAYAL

Contours are 100-foot intervals between elevations of 1000 and 10000 feet.

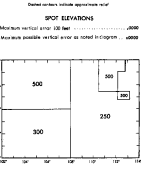
TRIMLINE CONTOUR INTERVAL

Interval of contours below the trimline is 100 feet.



SPOT ELEVATIONS

Mean sea level (MSL) 100 feet (indicated by a dot) and 2000 feet (indicated by a cross) are used in contouring.



ADDITIONAL ELEVATION DATA

Mean elevation points, indicated by the elevation value, are shown on this map. They are used in contouring and are not plotted in the contouring process.

CULTURE

Dist. sea level, other roads, high seas, high seas K.A., and other information are shown on this map.

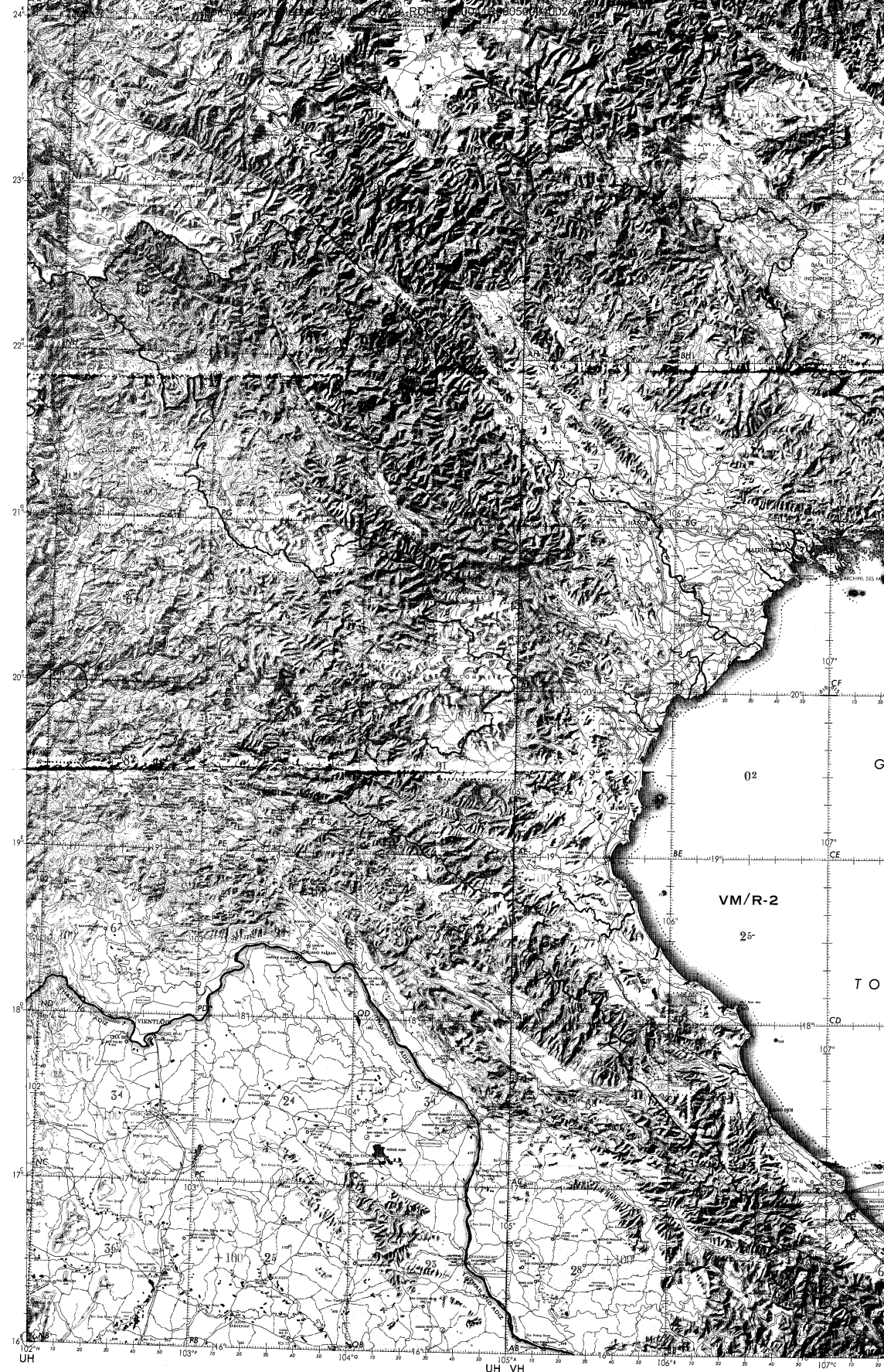
PICTORIAL SYMBOLIZATION

Aerial photography and other pictorial information are shown on this map. Aerial photography is indicated by the symbol shown in the legend.

NOTES section with symbols for shorelines, contours, and other features. Includes a table of symbols and their meanings.

THE CONTOUR EVALUATION OVERPRINT
The Contour Evaluation Overprint represents a gross indication of "vertical accuracy" based on a comparison of the contour information on this chart with the most reliable source material available. This "figure" shows on the overprint includes vertical errors caused by horizontal displacement only when in excess of 3 nautical miles. This overprint DOES NOT INCLUDE AN EVALUATION OF SPOT ELEVATIONS which are generally of a higher order of accuracy than contours. The accuracy of spot elevations is contained in the upper left margin.

CAUTION: INFORMATION CONTAINED HEREIN IS UNCLASSIFIED EXCEPT WHERE SHOWN OTHERWISE BY INDICATED BLOCKS. DATE 12/12/01 BY 4383 RDD/STP



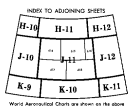
ONC J-11

CHINA, HONG KONG AND THE NEW TERRITORIES, MACAO, THAIAND, VIETNAM

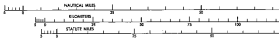
SCALE 1:1,000,000

EDITION 6

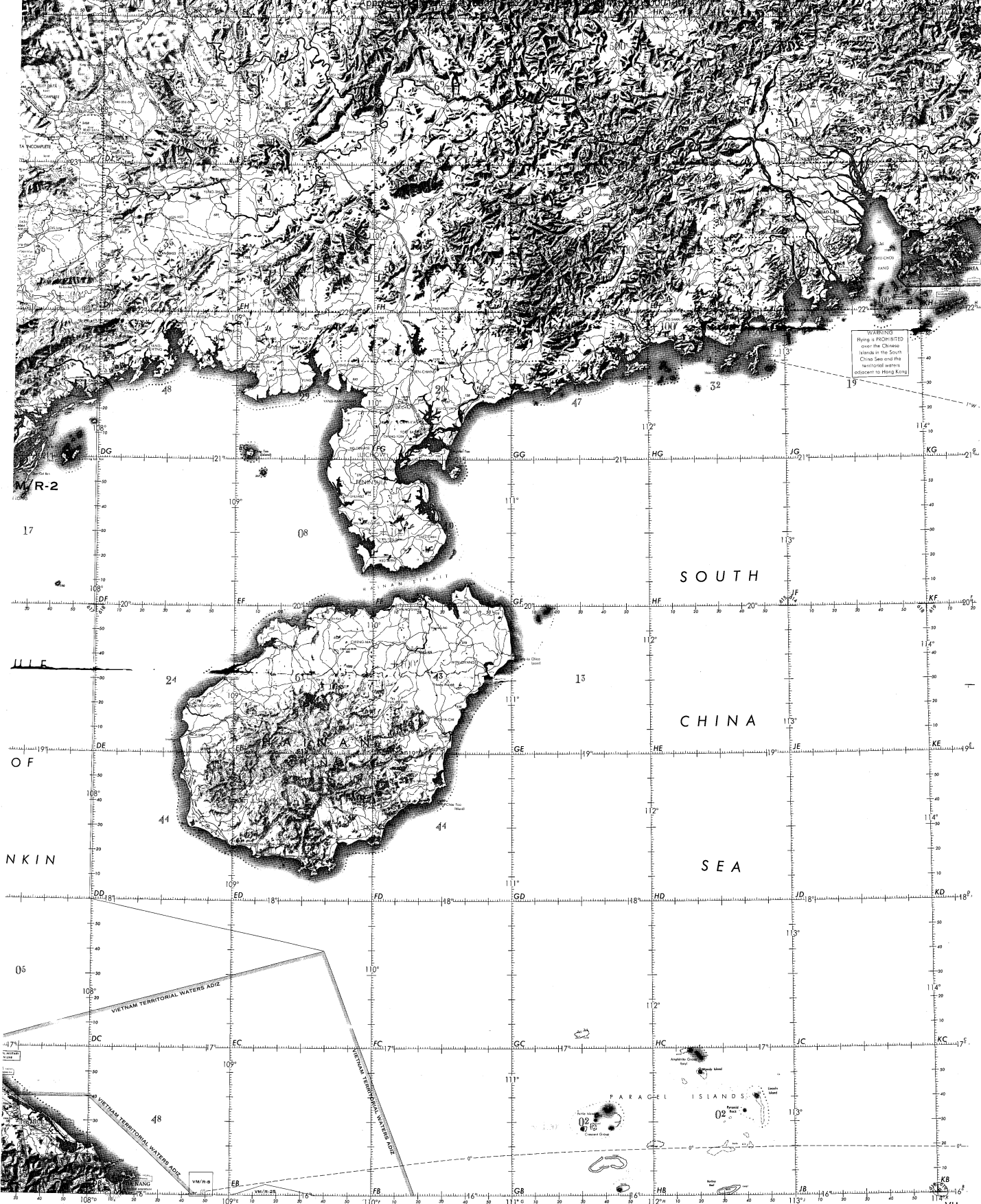
1:100,000 scale and other technical details.



ELEVATIONS IN FEET

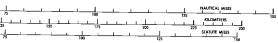


OPERATIONAL NA
1:1,000,000



ILLEGAL

WARNINGS
Ring is PROHIBITED
over the Chinese
Islands in the South
China Sea and the
territorial waters
adjacent to Hong Kong.



ELEVATIONS IN FEET

MAGNETIC INFORMATION	
1. Magnetic Variation	2. True Magnetic Declination
3. True Magnetic Deviation	4. Magnetic Dip
5. True Magnetic Error	6. True Magnetic Bearing
7. True Magnetic Distance	8. True Magnetic Time
9. True Magnetic Rate	10. True Magnetic Angle
11. True Magnetic Azimuth	12. True Magnetic Altitude
13. True Magnetic Elevation	14. True Magnetic Depression
15. True Magnetic Azimuth	16. True Magnetic Dip
17. True Magnetic Deviation	18. True Magnetic Error
19. True Magnetic Bearing	20. True Magnetic Distance
21. True Magnetic Time	22. True Magnetic Rate
23. True Magnetic Angle	24. True Magnetic Altitude
25. True Magnetic Elevation	26. True Magnetic Depression

NAVIGATION CHART
10,000

This chart is the property of the United States Government and is published for the use of the public. It is published by the National Ocean Service, Department of Commerce, and is available for purchase through the National Technical Information Center, Springfield, Virginia. It is available for purchase through the National Technical Information Center, Springfield, Virginia.

ISSUED BY THE NAUTICAL CHART AND INFORMATION CENTER
WASHINGTON, D.C. 20370

Number of Copies
Date of Issue
Date of Revision
Date of Replacement

ONC J-11