

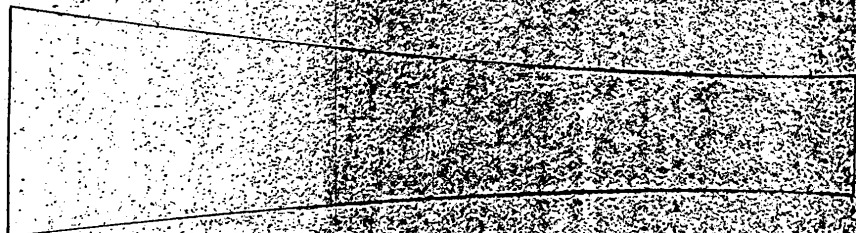
6TH PICTURE

Declassified and Approved For Release 2014/05/29 : CIA-RDP67B00945R000200260001-0



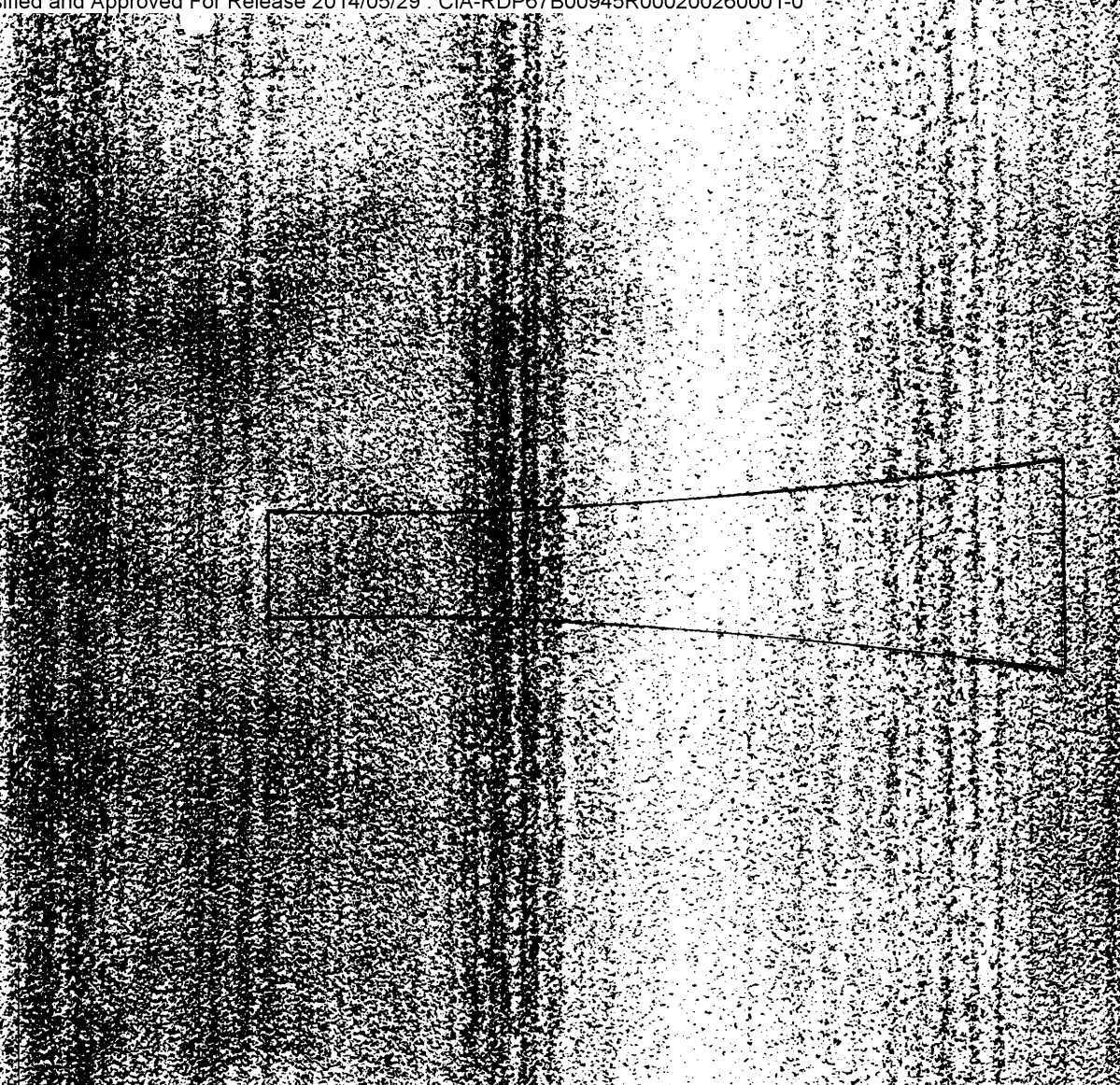
5TH PICTURE

Declassified and Approved For Release 2014/05/29 : CIA-RDP67B00945R000200260001-0



4TH PICTURE

Declassified and Approved For Release 2014/05/29 : CIA-RDP67B00945R000200260001-0



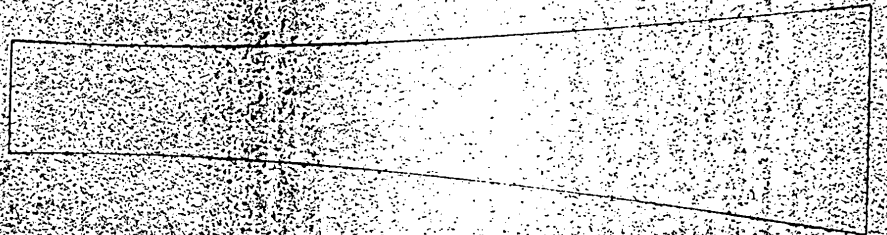
3RD PICTURE

Declassified and Approved For Release 2014/05/29 : CIA-RDP67B00945R000200260001-0



2ND PICTURE

Declassified and Approved For Release 2014/05/29 : CIA-RDP67B00945R000200260001-0



151 PICTURE

Declassified and Approved For Release 2014/05/29 : CIA-RDP67B00945R000200260001-0

Declassified and Approved For Release 2014/05/29 : CIA-RDP67B00945R000200260001-0

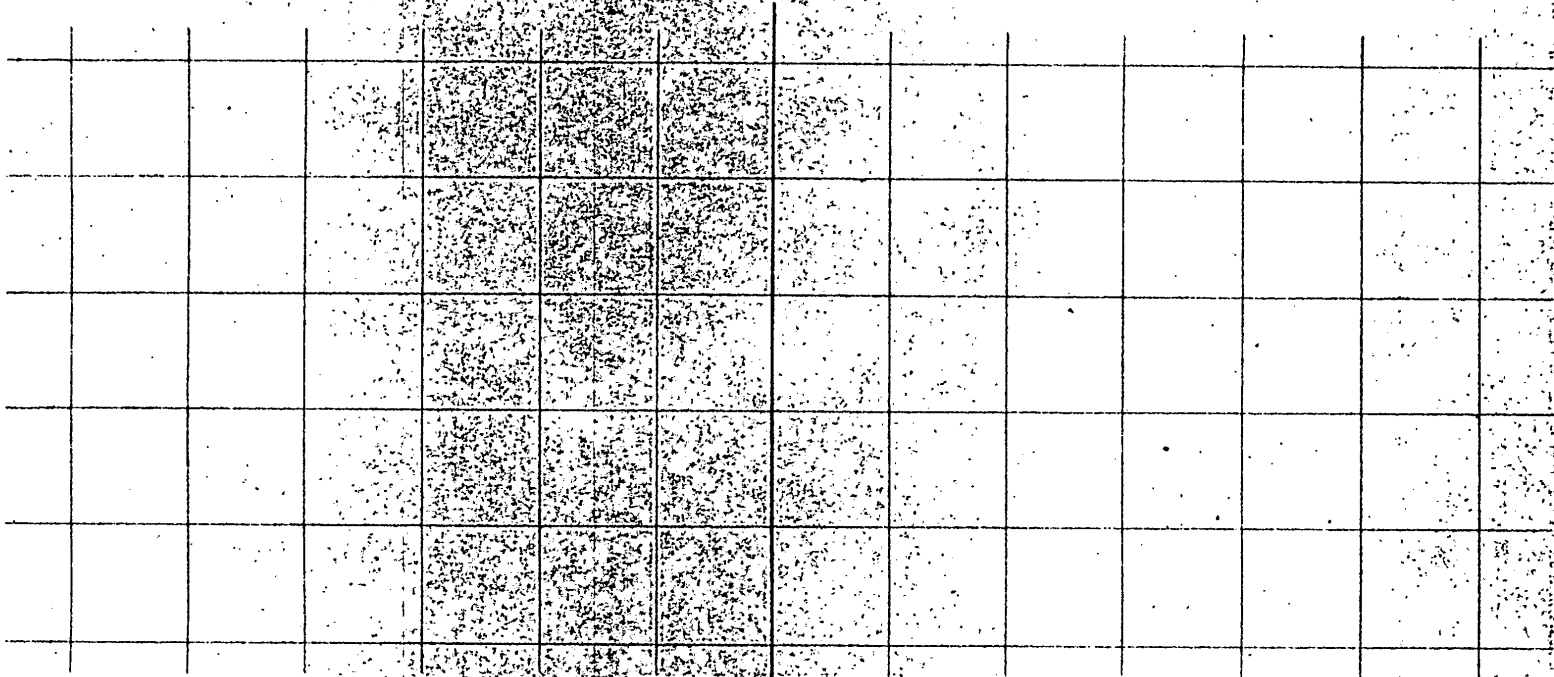


FIG. 2
MODE 2
75% OVERLAP

Declassified and Approved For Release 2014/05/29 : CIA-RDP67B00945R000200260001-0

Two modes of overlap are of particular interest. These are shown in the attached figures. (In the attached figures the exact geometry results from the particular parameters of the "S" System).

Mode 1 accomplishes at least single coverage over the entire path (60 miles wide at minimum altitude). It also provides stereo in a central path (which is approximately 10 miles wide.) Mode 2 provides stereo over the complete plight path.

M.D.R.
18 January 1960

Declassified and Approved For Release 2014/05/29 : CIA-RDP67B00945R000200260001-0

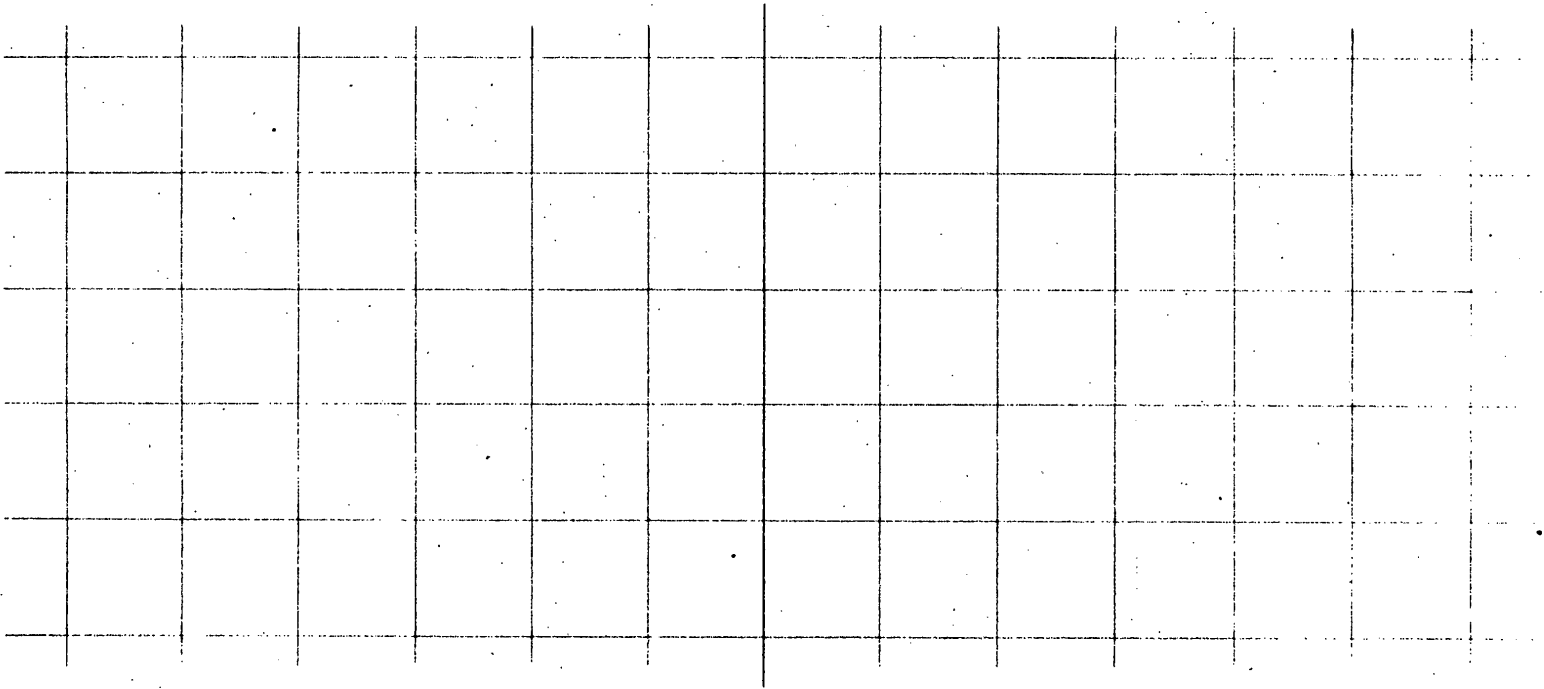


FIG 1
MODE 1
50% OVERLAP

Declassified and Approved For Release 2014/05/29 : CIA-RDP67B00945R000200260001-0