

~~SECRET~~

classification

HEADQUARTERS CONFIGURATION MANAGEMENT REQUEST FOR CHANGE	REFERENCE DATA:	RFC NO. <u>R0011-05</u>
	DR NO. _____ NOC NO. _____	DATE LOGGED _____
	OTHER _____	REV DATA _____

Title: Printing & Photography Division Building Facility Baseline Document Priority: E U R (circle one)

Prepared By: _____ Date: 20 Mar 86 Office: OL/FMD/CMS Phone: _____

Date Approval Rqrd By: _____ Change Type: PERM TEMP _____ (removal date)

Office Chief Sig: _____ D/CL Date: 6/30/86

25X1
25X1
25X1

Need for Change:

When the Headquarters Management Board (HMB) approved the Headquarters CM Plan, it also approved a list of documents that after approval were to be controlled by the Facilities Management Board (FMB). One of those documents is the Printing and Photography Building Facility Baseline Document. The document has been prepared and this RFC proposes its inclusion in Table 2 of the FMB Configuration Control Baseline as originally approved by the HMB. This document will provide a documented description of the important physical characteristics of the P&PD Building on 1 June 1986 and will be used for configuration management of the P&PD Building.

Description of Change:

Approval of this RFC will place Document H50002, Printing and Photography Building Facility Baseline Document under the control of the FMB. Further, it updates Table 2 to reflect documentation planned for FMB control as some of the originally planned documentation has been consolidated in the Facility Baseline Document.

Consequences if Not Implemented:

Direction from the Headquarters Management Board will not be followed.

<u>Document Numbers of Specifications/Drawings Affected:</u>	<u>Titles:</u>
H50002	Printing & Photography Building Facility Baseline Document
H90001	Headquarters Configuration Management Plan

H/W - Fac Affected: _____

Tasks	Start/End Dates	Actionee	Staff Costs	\$ Cost
Update and publish change to the Hdqtrs CM Plan	.. Approval... Appl + 30 days	OL/FMD/CMS	Routine Maintenance	
Publish and Distribute H50002	.. Approval... Appl + 30 days	OL/FMD/CMS	Routine Maintenance	

FORM 4-86 4323

~~SECRET~~

classification

R0011-05

H90001

TABLE 2FMB CONFIGURATION CONTROL BASELINE

<u>Title</u>	<u>Doc. No.</u>	<u>Custodian</u>
<u>REQUIREMENTS</u>	(TBD)	CMS
<u>BASELINE DOCUMENTS</u>		
Original Headquarters Building Facility	H50001	CMS
Headquarters Site Powerhouse Facility	(TBD)	CMS
Printing and Photography Building Facility	H 50002 - (TBD)	CMS
New Headquarters Building Facility	(TBD)	CMS
External Buildings Facilities	(TBD)	CMS
<u>TECHNICAL EQUIPMENT</u>	(TBD)	CMS
<u>TEST DOCUMENTS</u>	(TBD)	CMS
<u>INTERFACE DOCUMENTS</u>	(TBD)	CMS
<u>FACILITY MODIFICATION PLANS</u>	(TBD)	CMS

SECRET

H50002

PRINTING & PHOTOGRAPHY DIVISION BUILDING

FACILITY BASELINE DOCUMENT

SECRET

SECRET

H50002

DOCUMENT NO: H50002

TITLE: PRINTING AND PHOTOGRAPHY DIVISION BUILDING FACILITY BASELINE DOCUMENT

REV	DATE	REV BY	PAGES AFFECTED*	REMARKS
		FMB	INITIAL ISSUE	per RFC R0011-05

*Deleted page(s) (d); added page(s) (a); no marking for superseded page(s).

SECRET

SECRET

H50002

TABLE OF CONTENTS

		<u>PAGE</u>
1.0	INTRODUCTION	
	1.1 Purpose	1-1
	1.2 Scope and Organization	1-1
	1.3 Configuration Management Responsibilities	1-1
2.0	APPLICABLE DOCUMENTS	
	2.1 Scope	2-1
	2.2 Headquarters CM Documents	2-1
	2.3 Federal Standards	2-1
	2.4 General Codes and Standards	2-1
3.0	PRINTING AND PHOTOGRAPHY BUILDING DESCRIPTION	
	3.1 Scope	3-1
	3.2 Location	3-1
	3.3 General Construction	3-1
	3.3.1 Size, Form, and Organization	3-1
	3.3.2 Construction Characteristics	3-1
	3.3.3 Ceiling Height	3-1
	3.3.4 Ceiling Materials	3-5
	3.3.5 Walls	3-5
	3.3.6 Doors	3-5
	3.3.7 Floors	3-5
	3.4 Vault-Type Room Construction	3-6
	3.4.1 Requirements	3-6
	3.4.2 Walls	3-6
	3.4.3 Doors	3-6
	3.4.4 Other Openings	3-6
	3.4.5 Alarms	3-11
	3.5 Stairs and Corridors	3-11
	3.6 Elevators	3-11
	3.7 Loading Docks	3-11

SECRET

SECRET

H50002

	<u>PAGE</u>
4.0	MECHANICAL SYSTEMS
4.1	Scope 4-1
4.2	Heating, Ventilating, and Air Conditioning 4-1
4.3	Chilled Water 4-1
4.4	Steam 4-1
4.5	Plumbing Systems 4-2
	4.5.1 Domestic Water System 4-2
	4.5.2 Storm Drainage System 4-2
	4.5.3 Sanitary Drainage System 4-2
4.6	Chemical Waste Handling System 4-2
4.6.1	Silver Recovery 4-2
4.6.2	Chemical Solids Removal 4-2
4.6.3	Noxious Fumes Removal 4-3
4.7	Pneumatic System 4-3
4.7.1	Compressed Air and Vacuum System 4-3
4.7.2	Negative Pressure System 4-3
5.0	FIRE PROTECTION SYSTEM
5.1	Scope 5-1
5.2	Fire Detection 5-1
5.4	Fire Extinction 5-1
6.0	ELECTRICAL SYSTEMS
6.1	Scope 6-1
6.2	Normal Service 6-1
6.3	Emergency Service 6-1
6.4	Motorised Equipment Service 6-2
6.5	Utility Grounding System 6-2
6.6	Lightning Ground System 6-2
6.7	Lighting 6-2

SECRET

SECRET

H50002

	<u>PAGE</u>	
7.0	DATA NETWORKS	
7.1	Scope	7-1
7.2	Data Grid	7-1
7.3	Data Grid Description and Configuration	7-1
7.4	Communication Room	7-1
8.0	PHYSICAL SECURITY SYSTEMS	
8.1	Scope	8-1
8.2	Physical Protection	8-1
8.3	Alarms	8-1
	8.3.1 Intrusion Alarms	8-1
	8.3.2 Volumetric Alarms	8-1
	8.3.3 Secure Access Control System (SACS)	8-1
	8.3.4 Alarm Consoles	8-1
9.0	OPERATIONALLY CRITICAL AREAS AND SYSTEMS	
9.1	Scope	9-1
9.2	Photographic Operations	9-1
	9.2.1 Tank Farm	9-1
	9.2.2 Film and Paper Processing Facilities	9-1
	9.2.3 Film and Paper Printing Facilities	9-1
	9.2.4 Photo Copy and Inspection Facility	9-1
9.3	Printing Operations	9-10
	9.3.1 Electronic Prepress	9-10
	9.3.2 Camera/ Layout/ Plate Areas	9-10
	9.3.3 Press and Bindery Areas	9-10
9.4	Storage Facilities	9-17

v

SECRET

SECRET

H50002

LIST OF FIGURES

<u>NUMBER</u>	<u>TITLE</u>	<u>PAGE</u>
3.2-1	Headquarters Site Overview	3-2
3.3-1	Ground Floor P&PD Building Floor Plan	3-3
3.3-2	First Floor P&PD Building Floor Plan	3-4
3.4-1	CMU Vault Wall Crossection	3-7
3.4-2	Gypsum Board and Metal Vault Wall Crossection	3-8
3.4-3	Two Hour Fire Rated Wall Crossection	3-9
3.4-4	Standard Interior Wall Crossection	3-10
4.0-1	Mechanical Equipment Room G5 Layout	4-4
6.1-1	Switchgear Room G4 Layout	6-3
6.1-2	Motors Control Centers in Room G5	6-4
6.1-3	Power Riser Diagram	6-5
7.3-1	Data Grid Schematic	7-2
7.4-1	Room G16 Floor Plan	7-3
9.2-1	Ground Floor Architectural Layout	9-2
9.2-2	Photographics Operations Equipment Footprint	9-3
9.2.1-1	Tank Farm Architectural Layout	9-4
9.3-1	First Floor Architectural Layout	9-11
9.3-2	Printing Operations Equipment Footprint	9-12
9.3.3-1	Press & Bindery Equipment Footprint (Room 113)	9-17

SECRET

SECRET

H50002

LIST OF TABLES

<u>NUMBER</u>	<u>TITLE</u>	<u>PAGE</u>
7.4-1	Room G16 Equipment List and Requirements	7-4
9.2.1-1	Tank Farm Equipment List and Requirements	9-5
9.2.2-1	Film & Paper Processing Equipment List and Requirements	9-6
9.2.2-2	Film & Paper Processing Equipment List and Requirements	9-7
9.2.3-1	Video Replication Equipment List and Requirements	9-8
9.2.3-2	Film & Paper Printing Equipment List and Requirements	9-9
9.3.1-1	Electronic Composition Equipment List and Requirements (Room 128 & 129)	9-13
9.3.2-1	Camera/Layout/Plate Equipment List and Requirements	9-14
9.3.3-1	Press & Bindery Equipment List and Requirements	9-15

SECRET

SECRET

H50002

ABBREVIATIONS & ACRONYMS GLOSSARY

<u>ACRONYM/ ABBREVIATION</u>	<u>DESCRIPTION</u>
a.c.	Alternating current
AHU	Air Handling Unit
Amp	Amperes
BTU	British Thermal Units
c.i.p	Cast In Place
CM	Configuration Management
CMS	Configuration Management Staff
CMU	Concrete Masonry Unit
COMMO	Communication(s)
COMSEC	(5100 Title)
CPS	Cycles Per Second
CR	Condensate return
d.c.	Direct current
DSH	Department of Safety and Health
F	Fahrenheit
FBIS	Foreign Broadcast Information Service
FMB	Facilities Management Board
FMD	Facilities Management Division
gpm	gallons per minute
HS	Headquarters Site
HTS	Headquarters Telephone System
HVAC	Heating, Ventilating, and Air Conditioning
Hz	Hertz
ID	Identification
IDF	Intermediate Distribution Frame
KV	Kilovolt
KVA	Kilovolt Amperes
KW	Kilowatt
lbs.	Pounds
MCC	Motor Control Center(s)
MDF	Main Distribution Frame
MDP	Main Distribution Panel
MHS	Message Handling System
NEC	National Electric Code
NHB	New Headquarters Building
NSF	National Sanitation Foundation
No	Number
O.C.	On Centers
OHB	Original Headquarters Building
OL	Office of Logistics
PB	Powerhouse Building
PBS	Public Building Standards
P&PD	Printing and Photography Division
PSF	Pounds per Square Foot
RFC	Request for Change

viii

SECRET

SECRET

H50002

<u>ACRONYM/ ABBREVIATION</u>	<u>DESCRIPTION</u>
RFI	Radio Frequency Interference
Rev.	Revision
RTE	Route (ie. Highway)
SACS	Secure Access Control System
Sq.	Square
ST	Steam
Sys	System
TBD	To Be Done/Determined
TBR	To Be Resolved
UPS	Uninterrupted Power System
VAC	Volts, Alternating Current
VEPCO	Virginia Electric Power Company
VSBC	Virginia Statewide Building Code
VTR	Vault Type Rooms
WYE	Y (Shaped Connection)

SECRET

SECRET

H50002

TBD LISTING

<u>PARA. NO.</u>	<u>DESCRIPTION</u>	<u>ORGANIZATION TASKED</u>
9.2.2	Table 9.2.2-1, Deep Tank & 20" Paper Processor Requirements	P&PD
9.2.2	Table 9.2.2-2, 50" Paper Processor Requirements	P&PD
9.2.3	Table 9.2.3-2, Documate II, Special Effects Printer and 30" Paper Cutter Requirements	P&PD

x

SECRET

SECRET

H50002

1.0 INTRODUCTION

1.1 Purpose

This publication documents the Printing and Photography Division Building (P&PDB) as it existed on 1 June 1986. This document is under the control of the Facilities Management Board (FMB) and will be maintained by the Configuration Management Staff (CMS)/FMD/OL in accordance with the Headquarters Configuration Management Plan, H90001 and the applicable documents in paragraph 2.0. Changes affecting the characteristics described in this document will require the prior preparation and submission of a Request for Change (RFC) form for approval by the FMB.

1.2 Scope

This document describes the building structure, facilities, essential networks, systems/networks and operationally critical areas of the P&PB. This document serves as the "as built" baseline to be used in the configuration control of the P&PB.

The scope of this document includes the contiguous five (5) feet extending beyond the outer walls of the building. Other facilities on the Headquarters campus are described in separate baseline documents.

1.3 Configuration Management Responsibilities

The Technical Monitor (TM) for this document is the Chief, FMD/OL. The Configuration Management Staff (CMS)/FMD/OL will provide camera-ready pages that document all changes that are submitted and subsequently approved by the FMB. CMS will publish and distribute the change packages.

SECRET

SECRET

H50002

2.0 APPLICABLE DOCUMENTS

2.1 Scope

This section lists those documents that govern the design, construction, and characteristics of the P&PB.

2.2 Headquarters CM Documents

H90001	Headquarters Configuration Management Plan
H80001	Agency Space Allocation Document
CM-01	Request for Change (RFC) Instruction
CM-02	Configuration Management Staff Instruction
CM-03	Controlled Document Preparation Instruction

2.3 Federal Standards

PBS-P3425.85	Criteria for Federal Office Buildings, Jan. 1977
PBS-P3430.1	Quality Standards Design and Construction
PBS-P7000.2A	Assignment and Utilization of Space, Rev. Oct. 1977
GSA	Federal Management Property Regulations
PBS-P5900.2	Accident and Fire Prevention, July 1960
DSH1910	Occupational Health and Safety Standards
MIL-STD-461B	Electromagnetic Emission and Susceptibility
NACSIM 5100A	National COMSEC Information Memoranda, Compromising Emanations Laboratory Test Requirements
CFR FF 1-70 Part 1630	Standard for the Surface Flammability of Carpets and Rugs
FTMS 372	Critical Radiant Flux for Carpet Systems
No number	Fire Protection Manual- CIA/DA/OL/SD

2.4 General Codes and Standards

NFPCA RP-1	Standard Practice for the Fire Protection of Essential Electronic Equipment Operations
NEC	National Electric Code
NSF	National Sanitation Foundation, Codes and Standards
VSBC	Virginia Uniform Statewide Building Code

SECRET

SECRET

H50002

3.0 PRINTING AND PHOTOGRAPHY BUILDING DESCRIPTION

3.1 Scope

The following paragraphs describe size, form, construction, and operational facilities of the P&PDB.

3.2 Location

The P&PDB is located adjacent to the northwest corner of the New Headquarters Building (NHB) in the Headquarters site in Langley, Virginia. Figure 3.2-1 provides an overview of the site.

3.3 General Construction

3.3.1 Size, Form, and Organization

The P&PDB is classified by the BOCA Code as a use Group B, business with a Group 2 ordinary hazard type occupancy. It is a two-story rectangular structure measuring 325 feet by 120 feet for a total of 64,500 net square feet incorporated in two floors.

The P&PDB accommodates the production requirements of an Agency-wide printing and photographic service. The first floor has most of the printing operations facilities and the ground floor houses the photographic operations. There are some administrative/office areas in the building and a variety of equipment rooms supporting the physical plant. See Figures 3.3-1 and 3.3-2 for the ground floor and first floor plans respectively.

3.3.2 Construction Characteristics

The P&PDB is constructed of finished reinforced concrete. It has a columnar grid spacing of 25'-0" (north-south) by 30'-0" (east-west). The columns are designed to support two additional general office use floors above the first floor.

3.3.3 Ceiling Height

The nominal unraised floor to unfinished ceiling height is 12 feet. Nominal dropped ceiling height above unraised floors is 10 feet.

SECRET

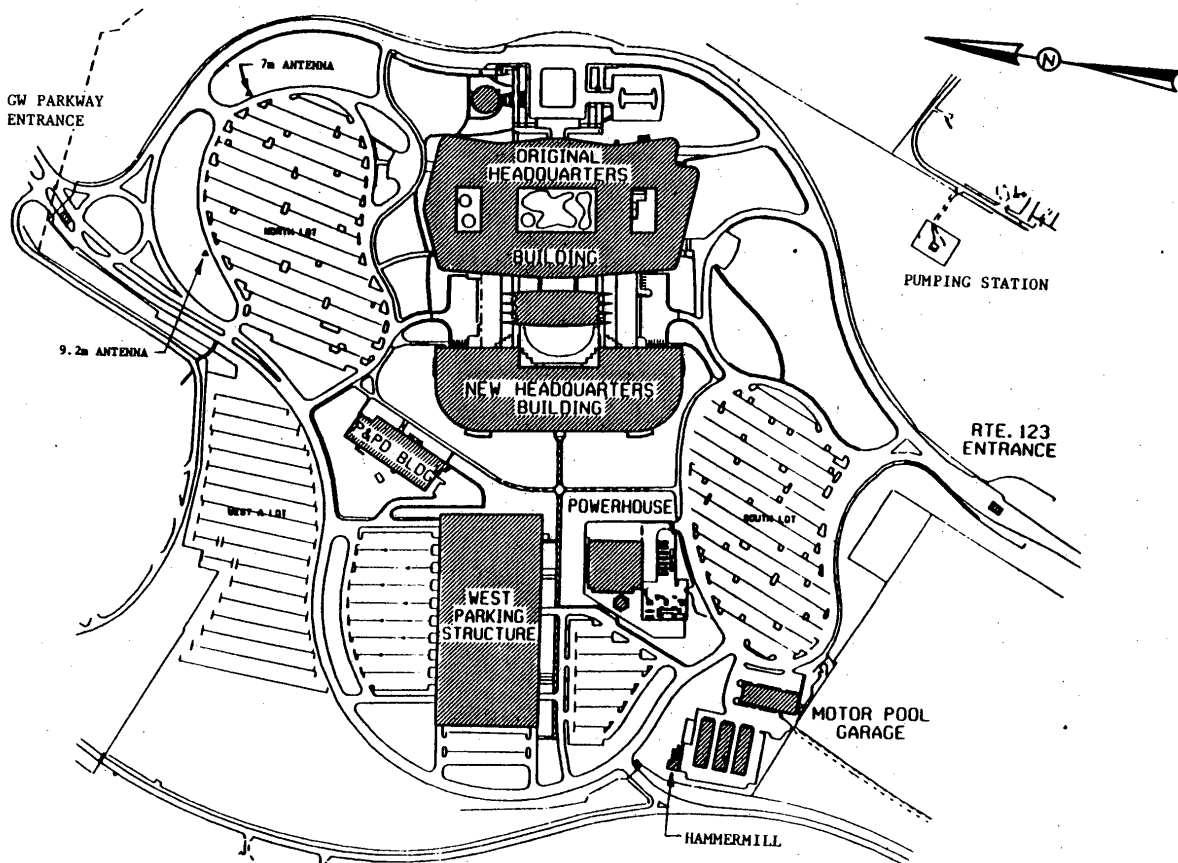


FIGURE 3.2-1 HEADQUARTERS SITE OVERVIEW

SECRET

3-2

SECRET

H50002

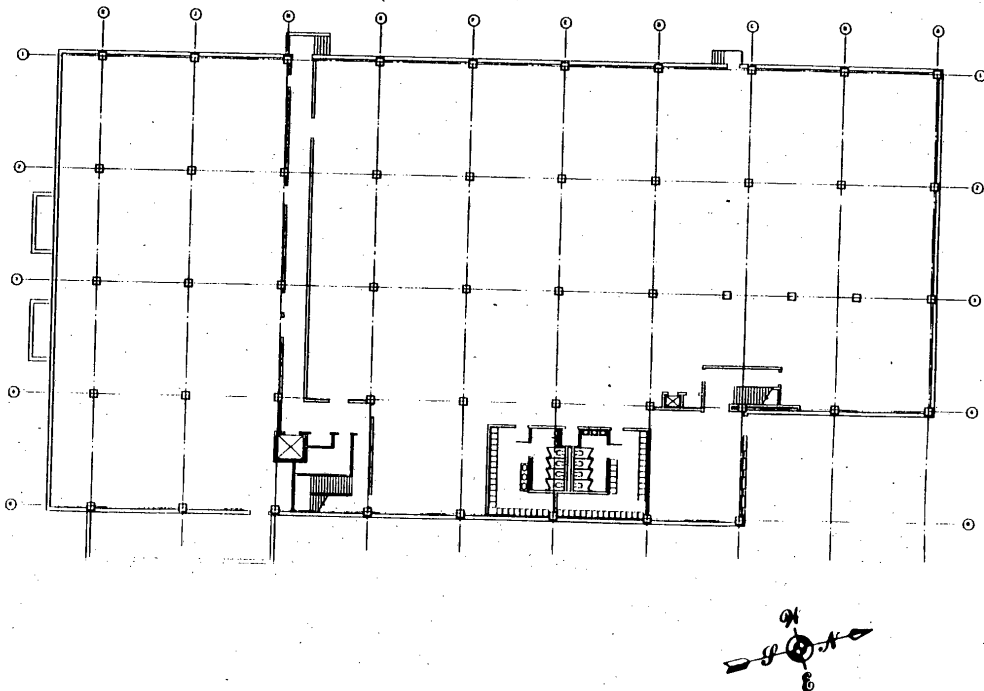


FIGURE 3.3-1 GROUND FLOOR P&PD BUILDING FLOOR PLAN

3-3

SECRET

SECRET

H50002

SECRET

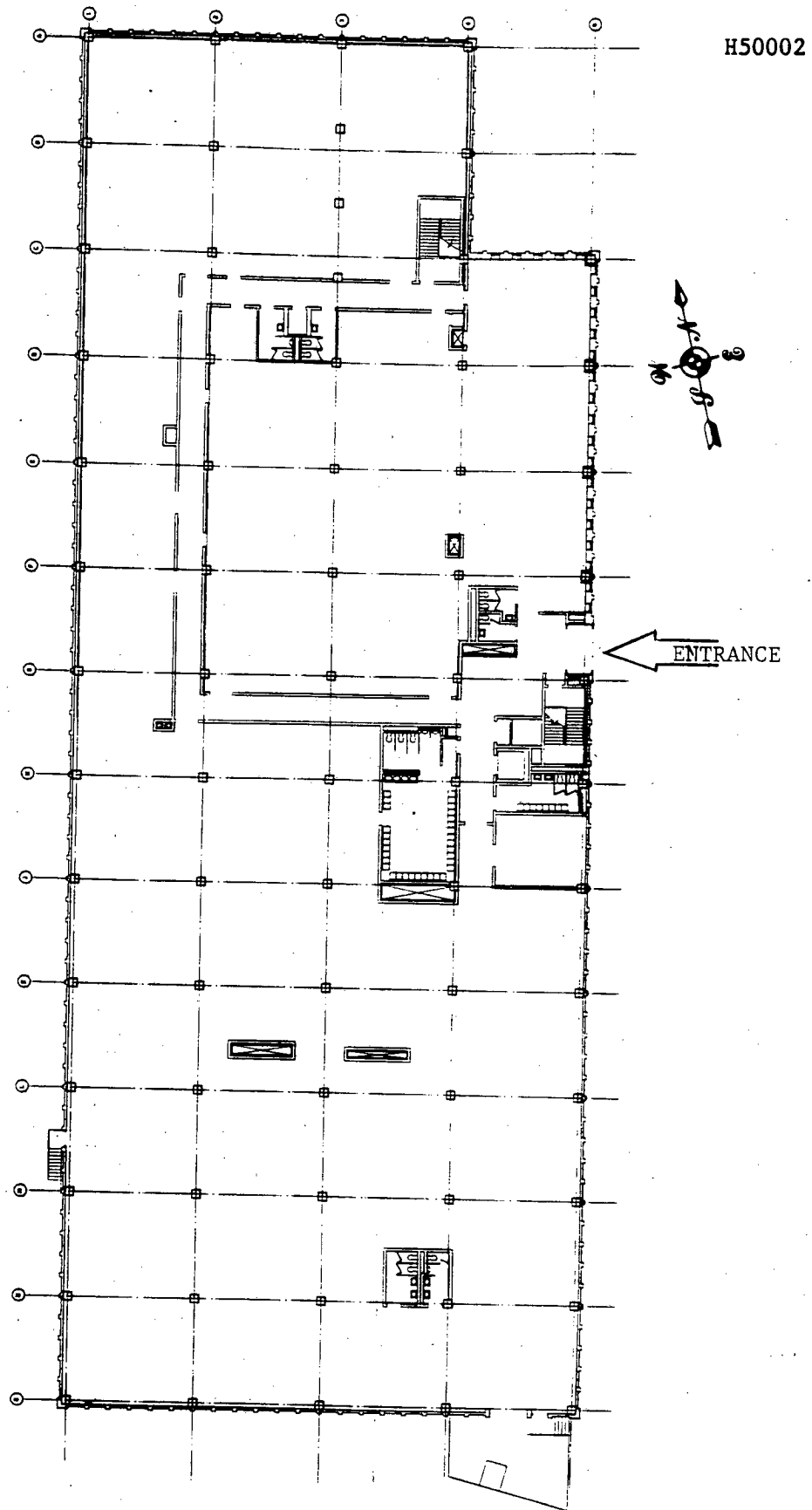


FIGURE 3.3-2 FIRST FLOOR P&PD BUILDING FLOOR PLAN

3-4

SECRET

SECRET

H50002

3.3.4 Ceiling Materials

Except for the Press Branch and the Warehouse fire-rated acoustic tile suspended ceilings are used on the first floor. All suspended ceilings have factory applied non-shedding plastic coated panels, perforated for acoustic dampening. The Press Branch and the Warehouse areas are open to the concrete ceiling above, and painted. Ceilings in the ground floor are snap on metal tile, except for room G32 which has regular suspended ceiling tile.

3.3.5 Walls

Except for concrete masonry walls and the fire walls that outline the stairs and elevators, perimeter walls are readily removable, metal partitions extending from the floor to the dropped ceiling. The wall above the suspended ceiling is constructed from 9-11 gauge expanded metal welded to 1/8 thick steel angle frame with the spot welds placed every six (6) inches. The metal partitions are secured to the bottom channel or frame with a 1/4 inch carriage bolt placed two (2) feet on center or peened on the protected side. The metal channel is anchored to the slab with 1/4 inch carriage bolts placed two (2) feet on center. See Figures 3.4-1 through 3.4-4 for specific details.

3.3.6 Doors

Standard wooden doors and metal frames are used throughout the P&PDB. All doors are a minimum of 3 feet wide by 7 feet high.

Technical areas are accessed through double doors with a nominal opening of 5 feet x 8 feet.

All doors accessing service areas and lavatories include automatic closure mechanisms and keyed locksets.

3.3.7 Floors

Concrete floor structures throughout are two-way waffle slab with a 4 1/2 inch conduit overlay slab.

Other than in photoprocessing areas which are covered with chemical resistant quarry tiles, floors are covered with vinyl asbestos tile.

SECRET

SECRET

H50002

3.4 Vault-Type Room Construction

3.4.1 Requirements

The security requirements governing the construction of Vault-Type Rooms (VTR) for open shelf storage of classified material have been followed in the P&PDB.

3.4.2 Walls

All VTR perimeter walls are built from true floor to true ceiling. The walls are constructed from 9-11 gauge expanded metal welded to 1/8 inch thick steel angle frame with the spot welds placed every six inches. The steel angle frame is securely anchored to the true floor and true ceiling by using a 1/4 inch bolt into the slab on 16 inch centers.

Movable metal partitions are used for interior walls throughout the P&PDB. Because the metal partitions only extend from the floor to false ceiling, the wall above the false ceiling is constructed from 9-11 gauge expanded metal according to the specifications described in the preceding paragraph. The metal partitions are secured to the bottom metal channel or frame with a 1/4 inch carriage bolt placed two feet on center and peened on the protected side. The metal channel is anchored to the slab with 1/4 inch carriage bolt placed two feet on center.

3.4.3 Doors

Perimeter doors are 1 3/4 inch metal fire doors having an UL-approved rating of one and one-half hours. All VTR primary doors are equipped with a security approved combination lock and a personnel control (Simplex) lock as optional hardware. All secondary doors are solid wooden doors and are equipped with approved sliding deadbolts or panic hardware.

3.4.4 Other Openings

All vents and ducts, which have openings exceeding 90 square inches are grilled with 9-11 expanded metal. The space around the vent or duct as it passes through an expanded metal partition does not exceed three inches.

SECRET

SECRET

H50002

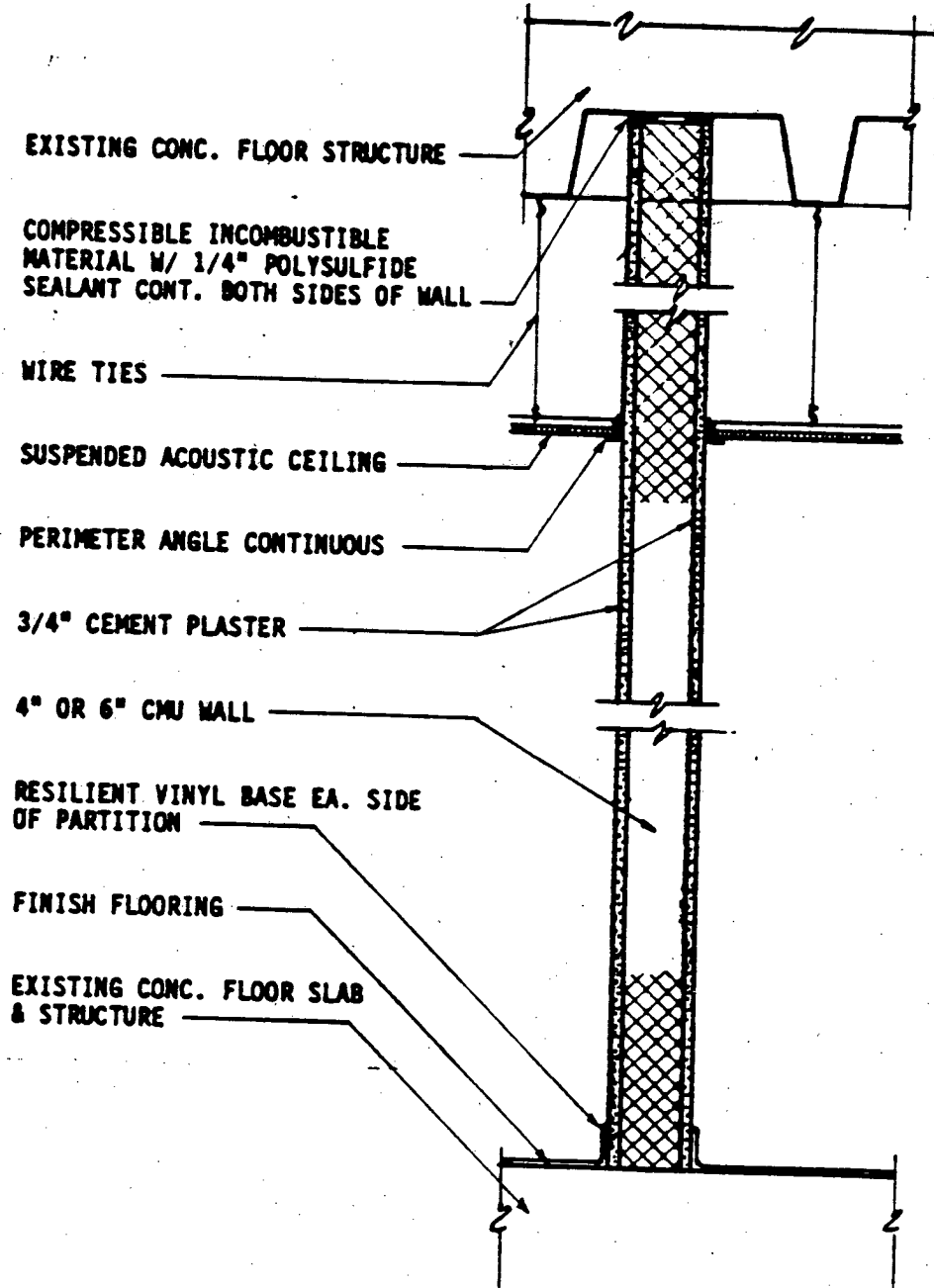


FIGURE 3.4-1 CMU VAULT WALL CROSECTION

SECRET

SECRET

H50002

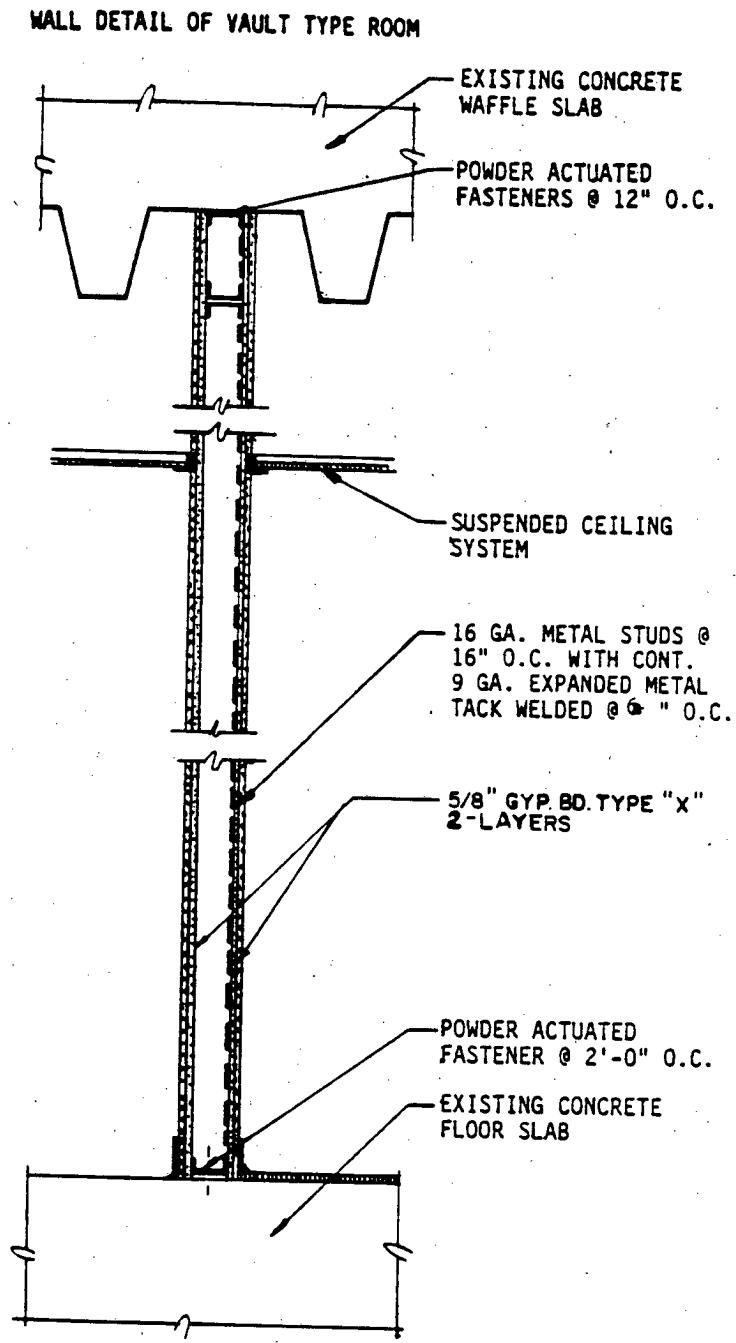


FIGURE 3.4-2 GYPSUM BOARD AND METAL VAULT WALL CROSSECTION

SECRET

SECRET

H50002

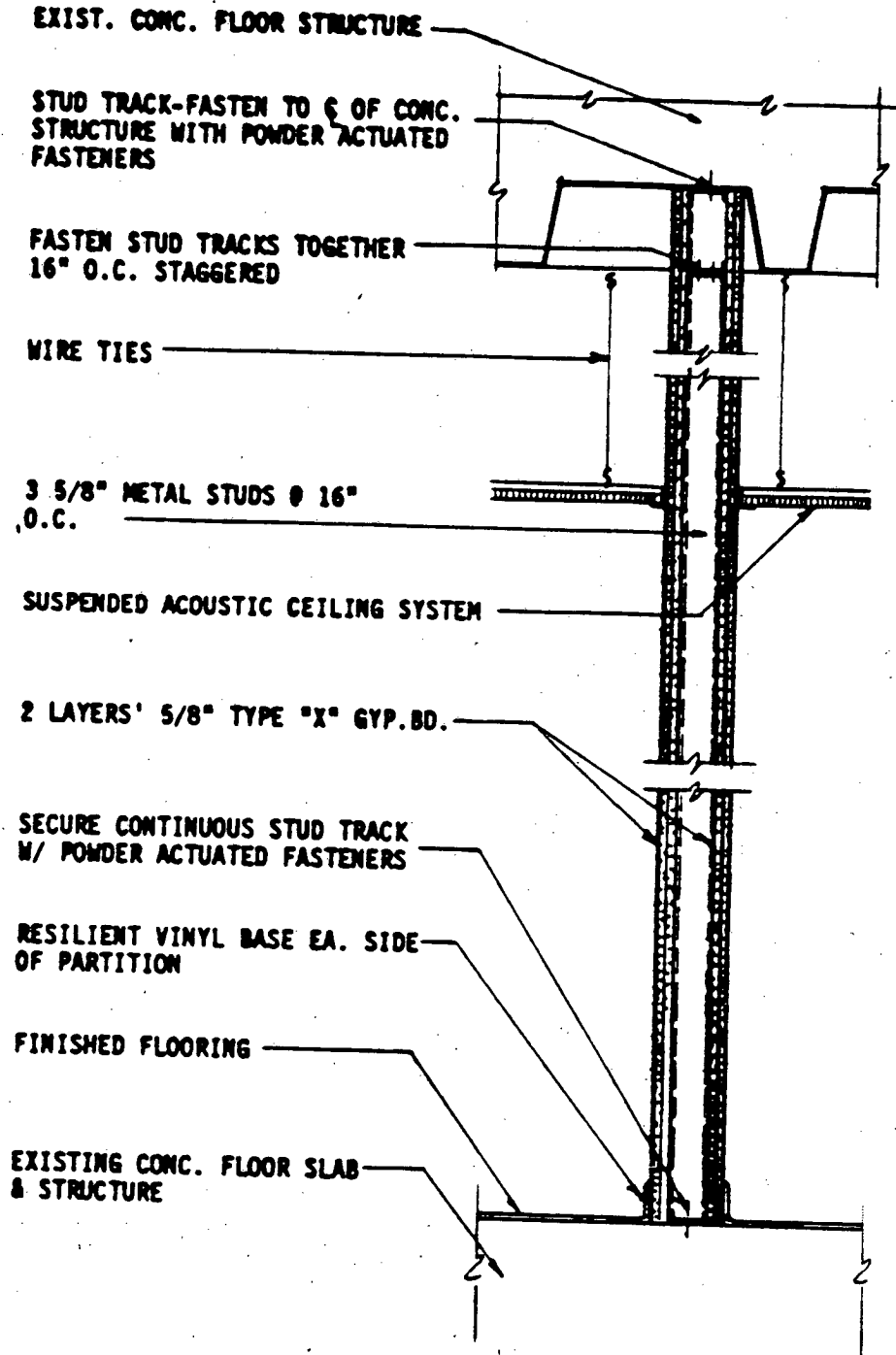


FIGURE 3.4-3 TWO HOUR FIRE RATED WALL CROSECTION

SECRET

SECRET

H50002

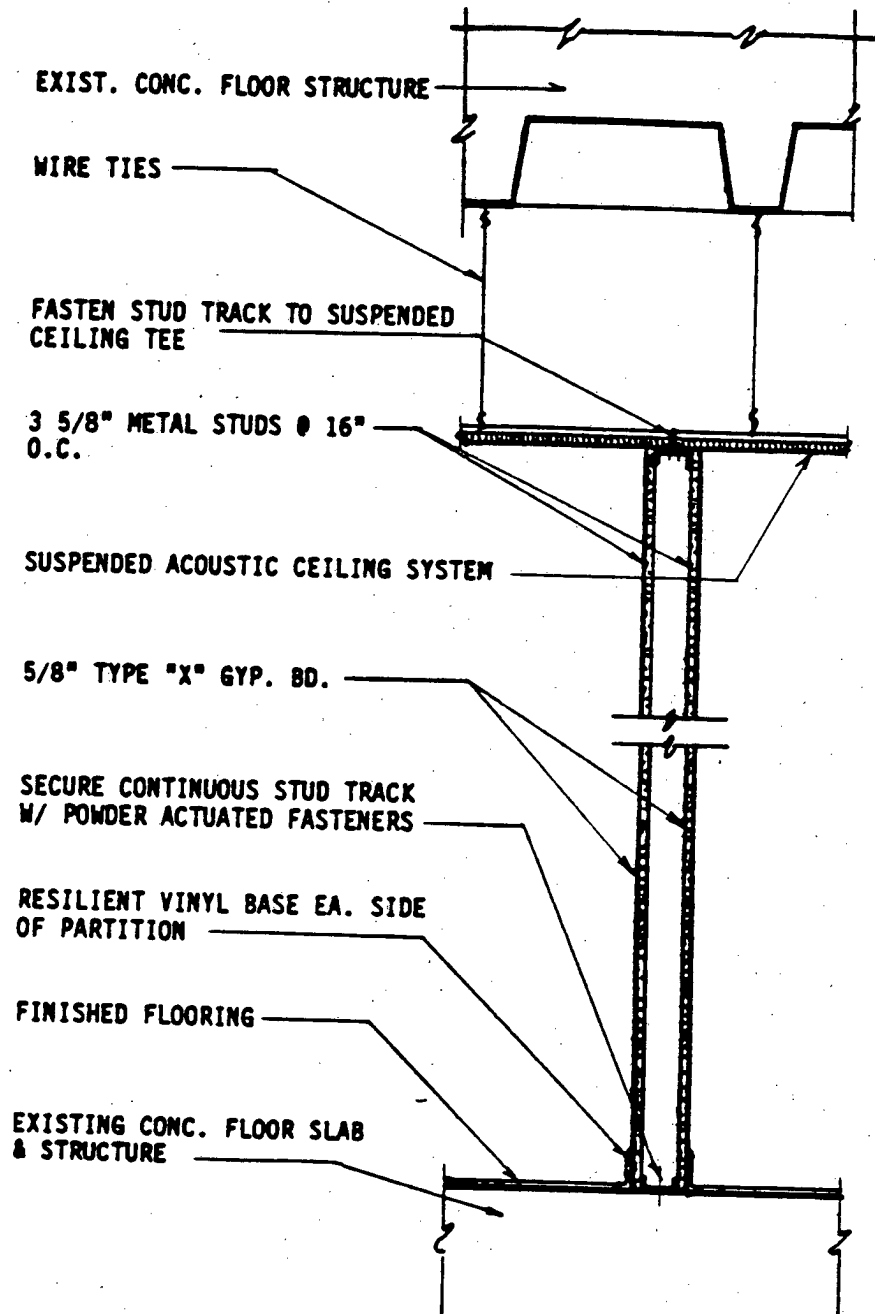


FIGURE 3.4-4 STANDARD INTERIOR WALL CROSECTION

SECRET

SECRET

H50002

3.4.5 Alarms

All VTRs are equipped with an intrusion alarm system furnished and installed by the Office of Security (OS). Power is provided by a 120 VAC dedicated power duplex outlet located above the primary entrance into the VTR. A Belden No. 8723 transmission line running inside a 3/4 inch conduit is provided between a junction box located above the suspended ceiling by the primary door, to the alarm junction box located in the OHB "E" corridor electrical closet which ultimately terminates in Room 1F19.

3.5 Stairs and Corridors

There are two (2) sets of stairs in the P&PD Building connecting the ground and first floors. One set is located next to the first floor entrance lobby and the other set is located just south of the northeast corner of the building. Both sets of stairs exit onto interior corridors located along the east side of the building.

In the ground floor there is an east-west 6' corridor extending between the Emergency Exit located by the southern end of the west wall of the P&PDB and the elevator. A short corridor at these intersection runs north and provides access to rooms G16 and G65. See Figure 9.2-1 in Section 9

In the first floor there are two east-west and two north-south corridors located in the northern half of the P&PDB as shown in Figures 9.3-1 and 9.3-2 in Section 9.

3.6 Elevators

There is one elevator south of the main lobby of the building connecting the two (2) floors for use as both personnel and light freight vertical transportation. This elevator rated at 4,500 lbs. capacity has a platform size of 6'x 6 1/2' and door opening size measuring 5' x 7'. A hydraulic ram located underneath the elevator drives it.

3.7 Loading Docks

There is one loading dock located along the southeast corner of the building. This dock has the capacity to service one tractor trailer. Clearance restriction is 10'. A 20,000 lb. capacity leveller is available to facilitate the delivery of equipment which cannot be unloaded directly onto the dock. All deliveries must pass through a doorway with a 9' x 10' size opening.

SECRET

SECRET

H50002

4.0 MECHANICAL SYSTEMS

4.1 Scope

This Section describes the major mechanical systems (services) provided in the P&PDB. These include the HVAC, Chilled Water, Steam and Plumbing Systems. Figure 4.0-1 indicates the location of the equipment located in Room G5 which supports the mechanical systems.

4.2 Heating, Ventilating, and Air Conditioning

Two 50 tons (52,105 CFM) Kopper Inc. Air Handling Units (AHUs) located in Mechanical Equipment Room (G5) serve the building. In ADP equipment areas, such as rooms 128 and 129, local AHUs supplement the additional cooling load

The method of air supply to office areas facilitates office partitioning. Air is supplied through air vents located next to the lighting fixtures. Generally, air return from the room to the ceiling plenum space is also returned through the lighting fixtures. This provides a "clean" ceiling system and reserves alternate ceiling tiles for sprinkler heads, speakers, occupancy sensors, etc.

Generally, labs and other special spaces are served from the central air handling units. Certain areas with critical air balance requirements are served from these systems using constant volume reheat boxes. Some labs or special spaces are served by local dedicated air handling systems. Fume hood exhaust fans are located in the roof to insure a negative pressure in exhaust ducts within the building.

Computer areas are served by two air systems, one overhead and one underfloor. This permits portions of the area to be used for office space as required by the user's changing needs. The underfloor air system is designed to handle that portion of the internal heat load which is in excess of the office cooling load requirement. Thus, both systems operating together provide ventilating and air conditioning for the computer areas.

4.3 Chilled Water

Approximately 21 gpm of 50° F. chilled water for the central AHUs in the Mechanical Equipment Room (G5) is provided via 8" diameter underground pipe runs entering by the southeast corner of the ground floor.

4.4 Steam

Steam service for the building is provided via a 6" underground pipe run which enters by the southeast corner of the ground floor.

SECRET

SECRET

H50002

4.5 Plumbing Systems

4.5.1 Domestic water System

The water service source for the P&PDB comes from a 12" perimeter loop around the building. Two service connections are made to this loop, one at the north and one at the south end of the building. These are interconnected within the building to facilitate maintenance.

To provide proper operating pressures within the building, variable speed constant pressure booster systems serve the upper levels of the building.

Domestic hot water is generated by shell and tube heaters which have the domestic water in the shell and steam in the internal tubes. All systems of domestic hot water have circulation pumps to assure relatively constant temperatures throughout the systems.

4.5.2 Storm Drainage System

Drainage from the building roof areas flows by gravity to the site storm systems. Foundation drainage is pumped to connect to the site storm systems.

4.5.3 Sanitary Drainage System

Waste from all fixtures and equipment within the building flows by gravity to the site sanitary system, exiting the building at its northeast corner.

4.6 Chemical Waste Handling System

4.6.1 Silver Recovery

Silver Recovery from black and white film processing is effected by a single unit located in the Chemical Tank Farm in room G7. Recovery from color film processing is effected locally with 10 gallon capacity units located near the processors.

4.6.2 Chemical Solids Removal

Removal of noxious chemical solids from Cibachrome color film processing is effected with a 20 gallon capacity extractor located near the processor. There are no other sources of noxious chemical solids in the P&PDB.

SECRET

SECRET

H50002

4.6.3 Noxious Fumes Removal

Besides the normal ventilation of rooms by the HVAC system, ozone and other noxious gases are removed from photo processing and chemical storage rooms with ducts venting out through the roof of the facility.

4.7 Compressed Air and Vacuum System

The Compressed Air and Vacuum System supplies both a positive pressure (i.e., compressed) air and a negative pressure (i.e. vacuum) air used in the operation of photographic and printing equipment. Figure 4.0-1 depicts the layout of the Mechanical Equipment Room G-5 and shows the location of the operationally critical equipment.

4.7.1 Positive Pressure System

Two 60 HP Quincy model QLPS-60 compressors supply high-volume low pressure air and two 58 HP Ingersall Rand model 200H compressors supply high pressure air to the operations areas noted in section 9 herein.

The low pressure system draws 44.0 KVA, 208 V, 3 phase 60 Hz power. The high pressure system draws 88.0 KVA, 208 V, 3 phase 60 Hz power.

4.7.2 Negative Pressure System

Two 40 HP Quincy model QSVI vacuum pumps service the operations areas noted in section 9 herein. They draw 44.0 KVA, 208 V, 3 phase 60 Hz power.

SECRET

H50002

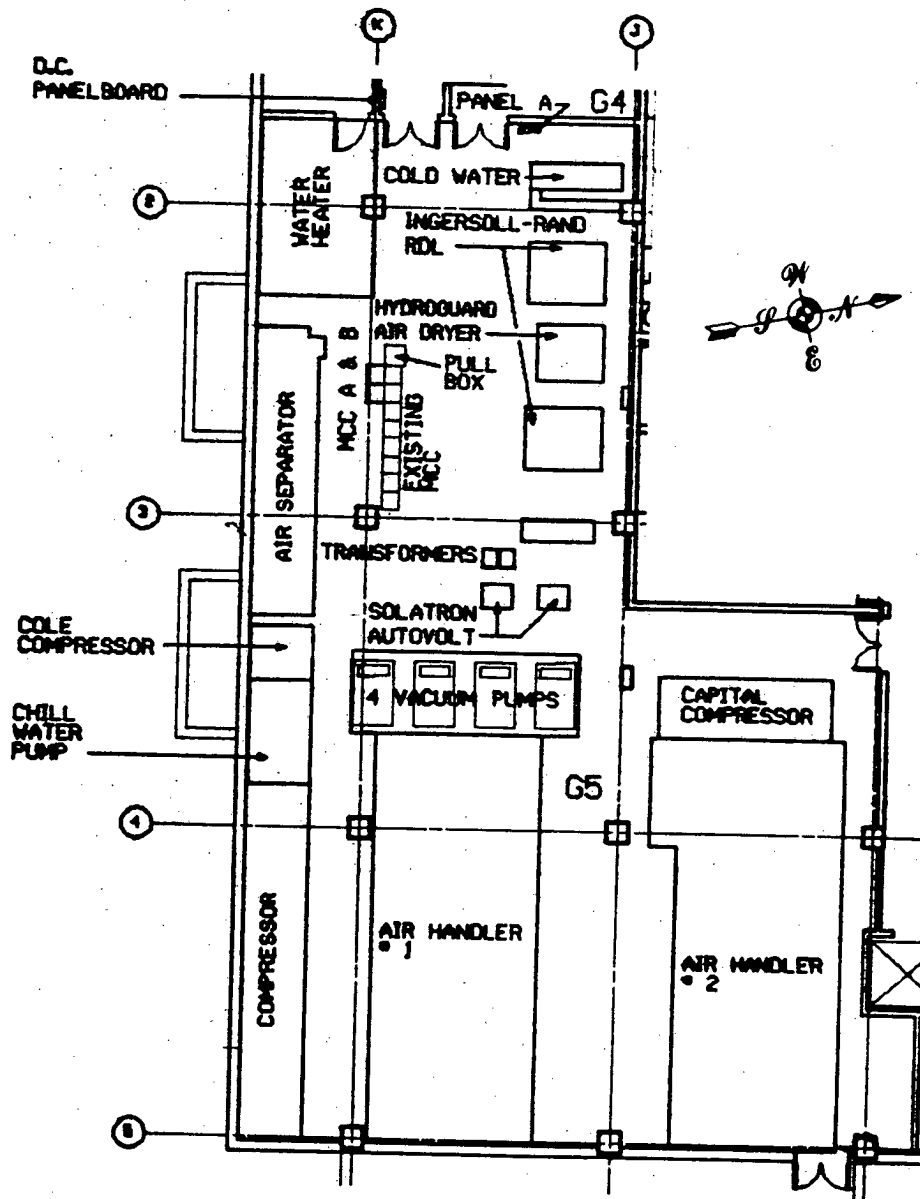


FIGURE 4.0-1 MECHANICAL EQUIPMENT ROOM G5 LAYOUT

SECRET

H50002

5.0 FIRE PREVENTION SYSTEMS

5.1 SCOPE

This section provides information on the present fire prevention measures existing in the P&PDB . This information is provided in the areas of detection fire alarms, central control equipment, local control panels, sprinkler and Halon systems.

5.2 FIRE DETECTION

The predominant detection devices method used throughout the building are thermal detection units. They are non-restorable heat sensitive detectors that operate at approximately 135 degrees Fahrenheit.

The detector senses the heat released from a fire and causes a signal to be sent to the monitoring control panels. This signal is also transmitted to the central equipment in Room 1F19 of the OHB. Supervisory personnel are notified so that appropriate action may be taken.

In data processing and switch rooms, smoke detectors are utilized. Ionization detectors are used in the above floor spaces to sense products of combustion while photoelectric detectors are used below floor for sensing smoke from the cables.

5.3 FIRE ALARMS

There are manual breakglass stations for initiating a fire alarm signal throughout in the building. The audible alarm system is composed of bells usually placed above the manual breakglass stations and in strategic locations for occupant awareness. The operator in Room 1F19 of the OHB alarms these bells by switches on a console.

5.4 FIRE EXTINCTION

There are wet pipe sprinklers located throughout both floors of the P&PD Building. There is also an ample supply of portable fire extinguishers, strategically located throughout both floors of the P&PD Building.

SECRET

SECRET

H50002

6.0 ELECTRICAL SYSTEMS

6.1 Scope

This section describes the Electrical Systems characteristics and related services which provide normal and emergency power; and lightning and technical equipment grounding. See Figures 6.1-1 through 6.1-3 for a description of the Electrical System.

6.2 Normal Service

One thousand (1,000) KVA of 60 HZ three phase power at 208/120 Volts is supplied to the P&PD Building from the normal feeder bus breaker # 8A off of the North transformer. The feeder enters the building along the southwest corner and terminates at a 1,000 KVA transformer in G4, the transformer room.

Five hundred (500) KVA Of 60 HZ three phase power at 208 Volts are tapped from the existing bus above, to feed a 208 (3 Phase) to 480/277 Volts dry type transformer located within the new 480 Volt Switchgear.

From the equipment room, power is distributed via electrical conduits to the local electrical power panels.

6.3 Emergency Service

One thousand (1,000) KVA of 60 HZ three phase power at 208 Volts is supplied to the P&PD Building from the emergency feeder bus breaker # 8B off of the South transformer. The feeder enters the building along the southwest corner and terminates at a 1,000 KVA transformer in the transformer room (G4).

Five hundred (500) KVA of 60 HZ three phase power at 208 Volts are tapped from the existing bus above to feed a 208 (3 Phase) to 480/277 Volts dry type transformer located within the new 480 Volt Switchgear.

From the equipment room, power is distributed via electrical conduits to the local electrical power panels.

SECRET

SECRET

H50002

In the worst case, i.e., technical power being supplied directly from the main bus (in the bypass mode), through transformation conforms to the following characteristics:

- 60 Hertz
- o Voltage: 208/120, 3-phase, Wye
- o Voltage tolerance: +/- 10%
- o Frequency: 60 Hz +/- 0.5%
- o Voltage variation, line-to-line: less than 10% of the arithmetic average of the three phases
- o Harmonic content: less than 5%

6.4 Motorized Equipment Service

Electrical power to mechanical equipment loads is handled by motor control centers. These centers are located west of column 3K in room G5 and are fed directly from the the Switchboards in room G4. Motor Control Centers A and B are fed from the 480 Volts Switchboard. They control the four Vacuum Pumps located in room G5. The other motor control centers, MCC 1 and MCC 2, are fed from the 208/120 Volts Switchboard in room G4. They control the Elevator, exhaust fans throughout and various pumps and compressors.

6.5 Utility Grounding System

Utility grounds are used for all of the equipment and applications not serviced by technical power. The basic system consists of power safety grounds and ground risers of down conductors which connect these safety grounds to an earth ground system.

The safety ground consists of a 2" x 1/4" copper bus bar running along the south wall of the Transformer Room. The bus bar is connected to a number of 5/8-inch copper ground rods driven approximately 20 feet into the ground. The bus bar is also connected to bus bar loops surrounding two transformer bays. All utility grounds and neutral, through their respective panel boards and transformers, tie into the safety ground system.

6.6 Lightning Ground System

A counterpoise ground system which encircles the outside of the building perimeter is provided for use with the lightning system down conductors. The counterpoise ground system is connected to the substation ground mats and the building structural steel in order to achieve an effective equi-potential ground mass.

6.7 Lighting

Power for lighting is supplied by 277 volts, single phase 60 Hertz circuits throughout the P&PB. The selection and placement of fixtures throughout the P&PB provides the recommended levels of illumination listed in the IES Lighting Handbook.

SECRET

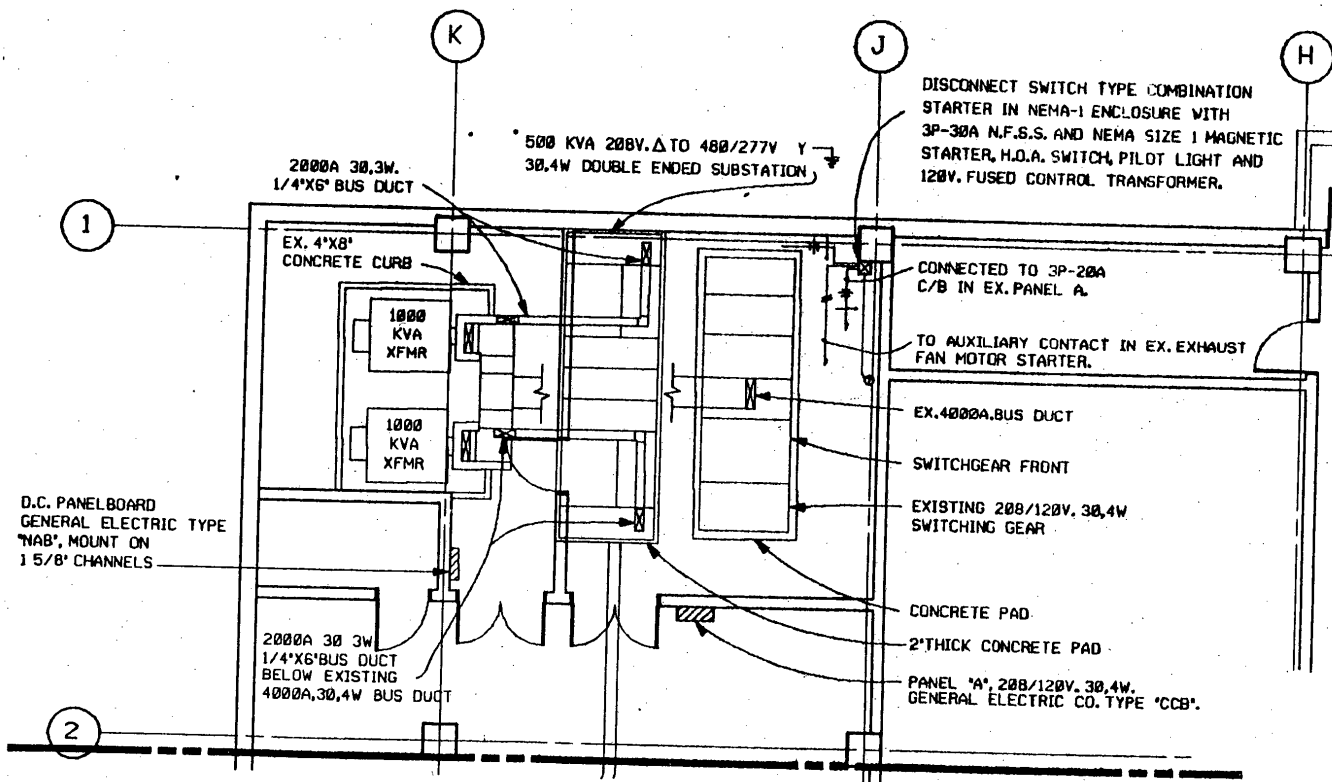


FIGURE 6.1-1 SWITCHGEAR ROOM G4 LAYOUT



H50002

SECRET
6-3

SECRET

SECRET

H50002

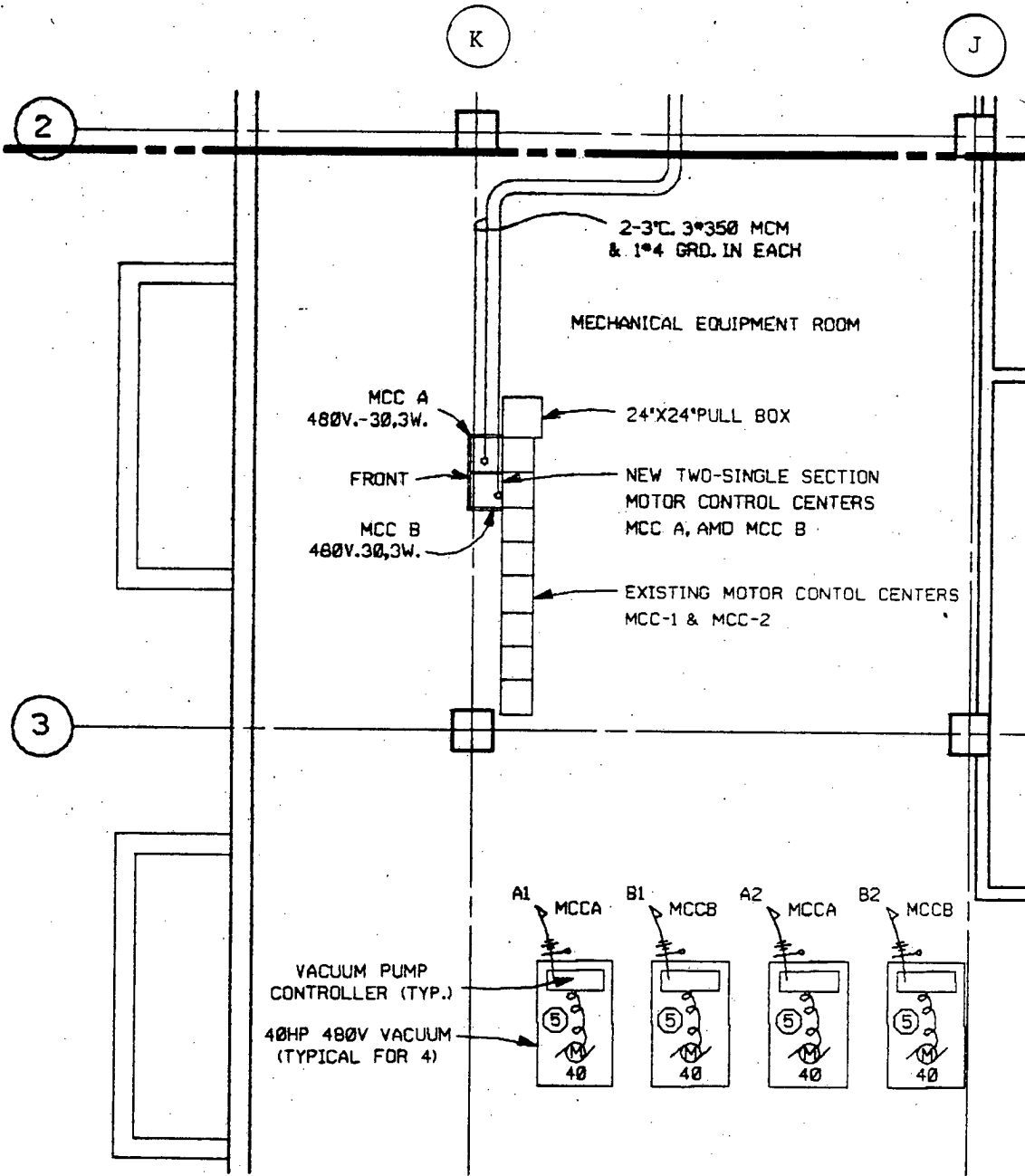
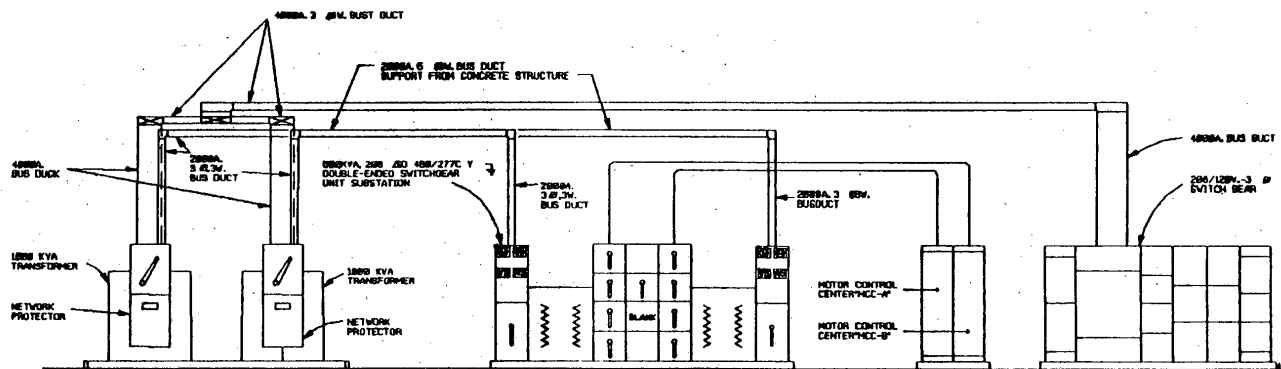


FIGURE 6.1-2 MOTOR CONTROL CENTERS IN ROOM G5

6-4
SECRET



SECRET
6-5

SECRET

FIGURE 6.1-3 POWER RISER DIAGRAM

H50002

SECRET

H50002

7.0 DATA NETWORKS

7.1 Scope

This section describes the data grids and local area networks operating in the P&PDB.

7.2 Data Grid

The data grid provides the means of communicating between remote terminals in the P&PDB and the communications equipment on the ground and first floors of the OHB.

7.3 Data Grid Description and Configuration

All cables in the data grid are RFI protected twisted/shielded cable. Cable runs between terminal boxes, pull boxes, communication cabinets, and/or peripheral equipment, are routed in metal conduits. The above said boxes, cabinets, and equipment are RFI protected themselves. The overall configuration of the Data Grid in the P&PDB is schematically illustrated in Figure 7.3-1.

7.4 Communications Room

Room G16 houses the communications and secure telephone equipment in the P&PDB. The communications equipment provides interconnection between the computer mainframes and Secure Telephone Switch in the OHB and the data terminals and secure telephone switch in the P&PDB. Figure 7.4-1 is an architectural layout of Room G16 showing the Communications equipment and secure telephone switch. Table 7.4-1 lists the electrical and cooling services requirements for the equipment in Room G16. The secure grid connects the secure telephones and data terminals within the P&PDB to the secure telephone switch and communications equipment in Room G16.

SECRET

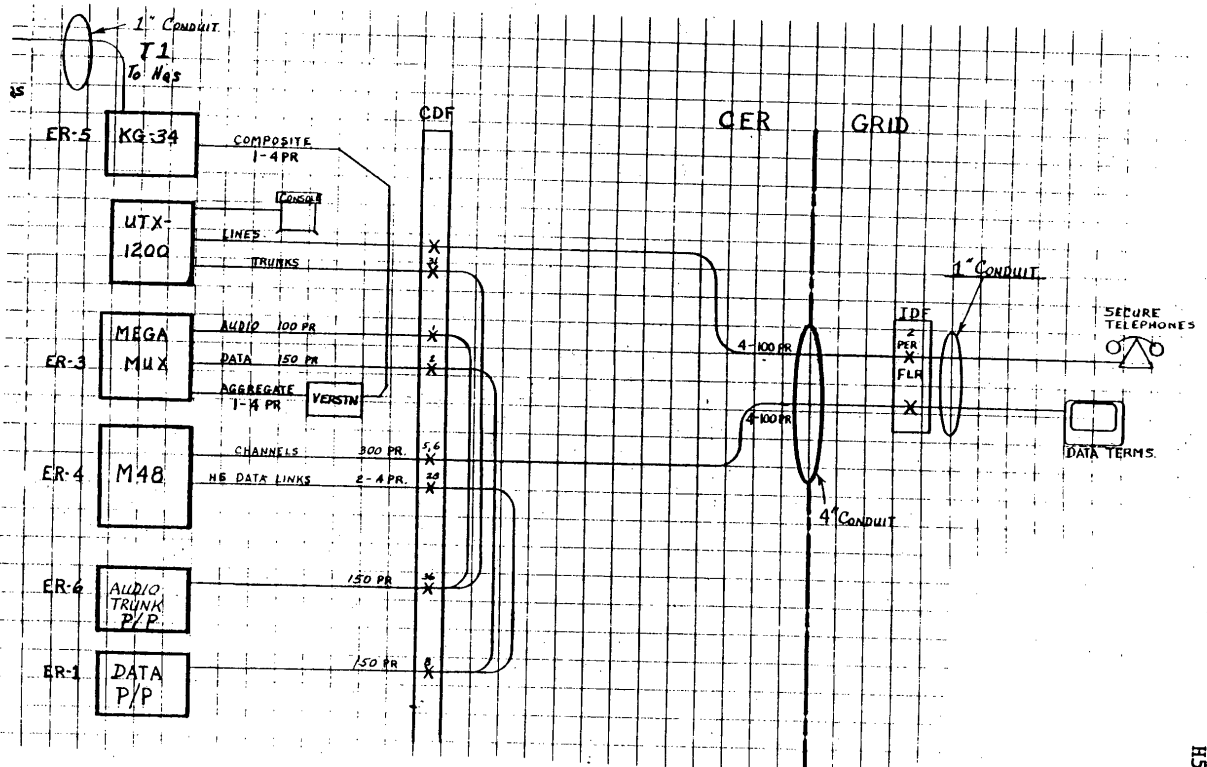


FIGURE 7.3-1 DATA GRID SCHEMATIC

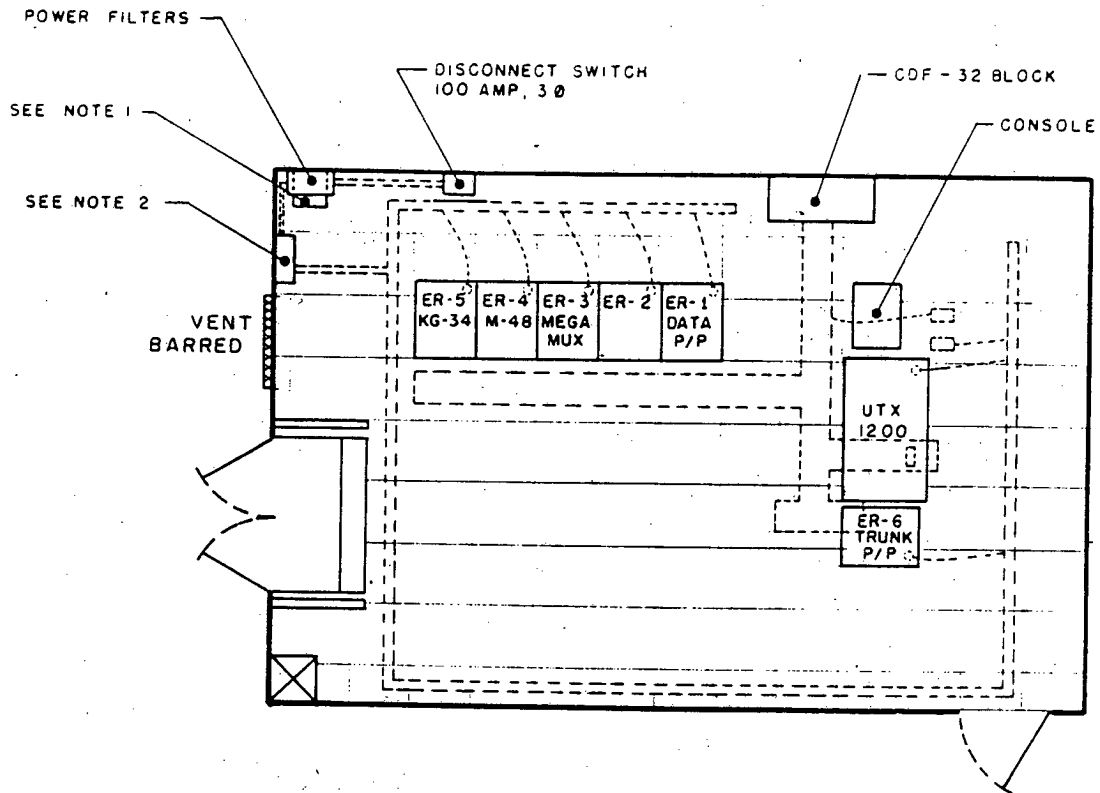
SECRET
7-2

SECRET

H50002

SECRET

H50002



NOTES :

1. ISOLATION TRANSFORMER
15KWA, 1 Ø, TYPE 208-120/240 VAC
2. AC DISTRIBUTION PANEL GE-12
POSITION 100 AMP, 1 Ø.
3. PP & D RED POWER PANEL SCHEDULE

EQUIPMENT	BKR #	BKR #	EQUIPMENT
UTX 1200	1	2	TRUNK P/P
KG-34 (ER5)	3	4	M48 (ER4)
MEGA MUX (ER3)	5	6	
ER2	7	8	DATA P/P (ER1)
UTX CONSOLE	9	10	
	11	12	

FIGURE 7.4-1 ROOM G16 FLOOR PLAN

SECRET

TABLE 7.4-1 ROOM G16 EQUIPMENT LIST AND REQUIREMENTS

MFG. TYPE AND DESCRIPTION	MFG.	QUANTITY	COOLING REQ'TS (EACH)			ELECTRICAL PWR REQ'TS KVA (EACH)				
			CFM	KBTU/HR AIR	KBTU/HR WATER	120 VAC 1P, 60HZ	208 VAC 1P, 60HZ	208 VAC 3P, 60HZ	208 VAC 3P, 400HZ	PANELS
UTX-1200 SWITCH	TELECO	1	-	14.0	-	-	4.1	-	-	-
CONSOLE	TELECO	1	-	1.0	-	-	0.3	-	-	-
M 48	GFE	1	-	2.1	-	-	0.6	-	-	-
TDM 1258	GFE	1	-	1.5	-	-	0.4	-	-	-
KC-34	GFE	1	-	0.2	-	-	0.1	-	-	-
DATA PATCH PANEL	GFE	1	-	N/A	-	-	N/A	-	-	-
TRUNK PATCH PANEL	GFE	1	-	N/A	-	-	N/A	-	-	-

SECRET

7-4

SECRET

H50002

SECRET

H50002

8.0 PHYSICAL SECURITY SYSTEMS

8.1 Scope

This section describes the control of access to the P&PD Building.

8.2 Physical Protection

The entire restricted space is maintained as a security premise. Routine access is through a single pedestrian entrance and foyer. The foyer is large enough to accommodate a guard station and reception area, with accommodations for less than ten visitors. Access to the space beyond the guard is through two SACS controlled badge readers.

8.3 Alarms8.3.1 Intrusion Alarms

All emergency exit doors, perimeter doors, and doors accessing designated restricted areas have local alarms. These alarms are annunciated at the central alarm console. The local alarms on the emergency doors equipped with panic bars are battery operated.

8.3.2 Volumetric Alarms

OS approved Volumetric Alarms are installed in all restricted access VTRs.

8.3.3 Secure Access Control System (SACS)

All doors which access a technical or office area from a common corridor are protected by a SACS. This system is of the card (Badge) reader type. The control console is under the control of the Office of Security. A secure/access switch is installed in the protected area by the door that it controls. The alarm readouts are integrated with the alarm console.

8.3.4 Alarm Consoles

All security, safety, and utility consoles referenced in this document are integrated, to the extent possible, into a single read-out display and remoted to a control center in the Security Office complex in the OHB.

SECRET

SECRET

H50002

9.0 OPERATIONALLY CRITICAL AREAS AND SYSTEMS**9.1 Scope**

This Section describes areas and systems in the P&PDB that are critical to operations. These are areas which have activities, functions and/or equipment that are vital to the mission of the agency.

9.2 Photographic Operations

The Photographic Operations located on the ground floor consist of VTRs and photographic laboratory facilities. See Figure 9.2-1 for a floor plan of the ground floor showing the operationally critical areas shaded and Figure 9.2-2 for the critical equipment therein.

9.2.1 Tank Farm

The Tank Farm, located in VTRs G-6 and G-7, contains the Chemical Mixing System described in Table 9.2.1-1.

9.2.2 Film and Paper Processing Facilities

VTRs G13, G14, G15, G18, G19, G21, G26, G32, G36, G36A, G37 and G44A are dedicated Film Processing Facilities. Tables 9.2.2-1 and 9.2.2-2 list the physical characteristics of the operations significant equipment in these VTRs.

9.2.3 Film and Paper Printing Facilities

VTRs G20, G24, G25, G26A, G29, G30, G31, G34, G39, G40, G42, G43, G44, G45, G46, G48, G49, G50, G51A, G54, G55, G56, G57, G59, G60, G62, G63, G64 and G78 are dedicated Paper Processing Facilities. Tables 9.2.3-1 and 9.2.3-2 list the physical characteristics of the operations' significant equipment in these VTRs.

9.2.4 Photo Copy and Inspection Facility

The Photo Copy and Inspection Facility is located in Room G65.

SECRET

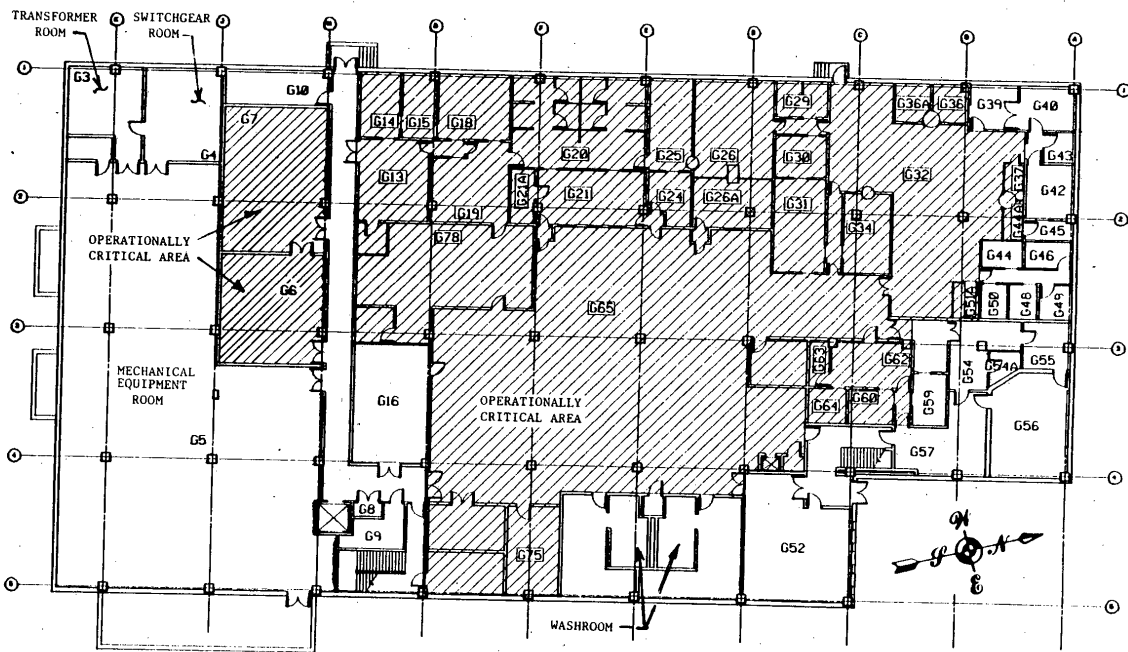


FIGURE 9.2-1 GROUND FLOOR ARCHITECTURAL LAYOUT

SECRET

9-2

SECRET

H50002

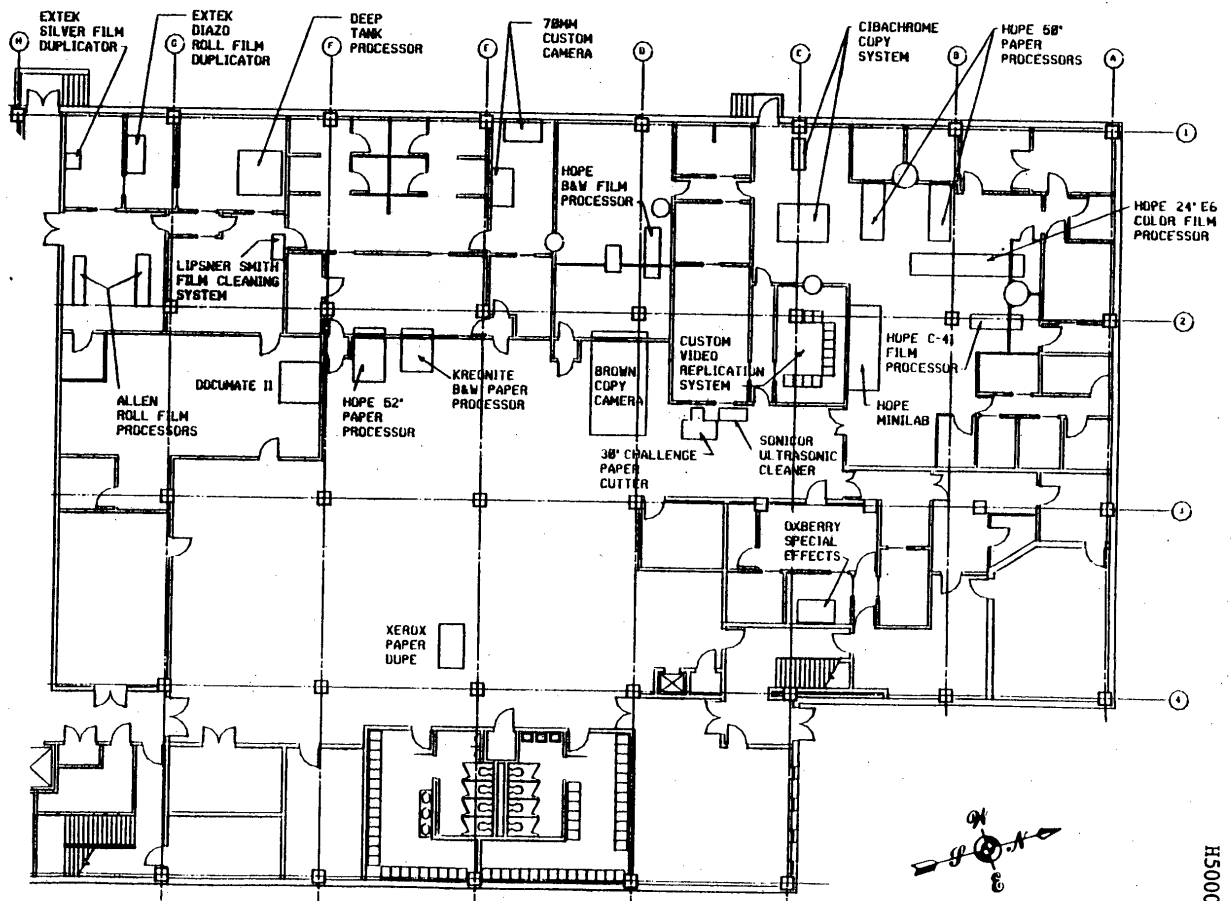


FIGURE 9.2-2 PHOTOGRAPHIC OPERATIONS EQUIPMENT FOOTPRINT

SECRET

9-3

SECRET

H50002

SECRET

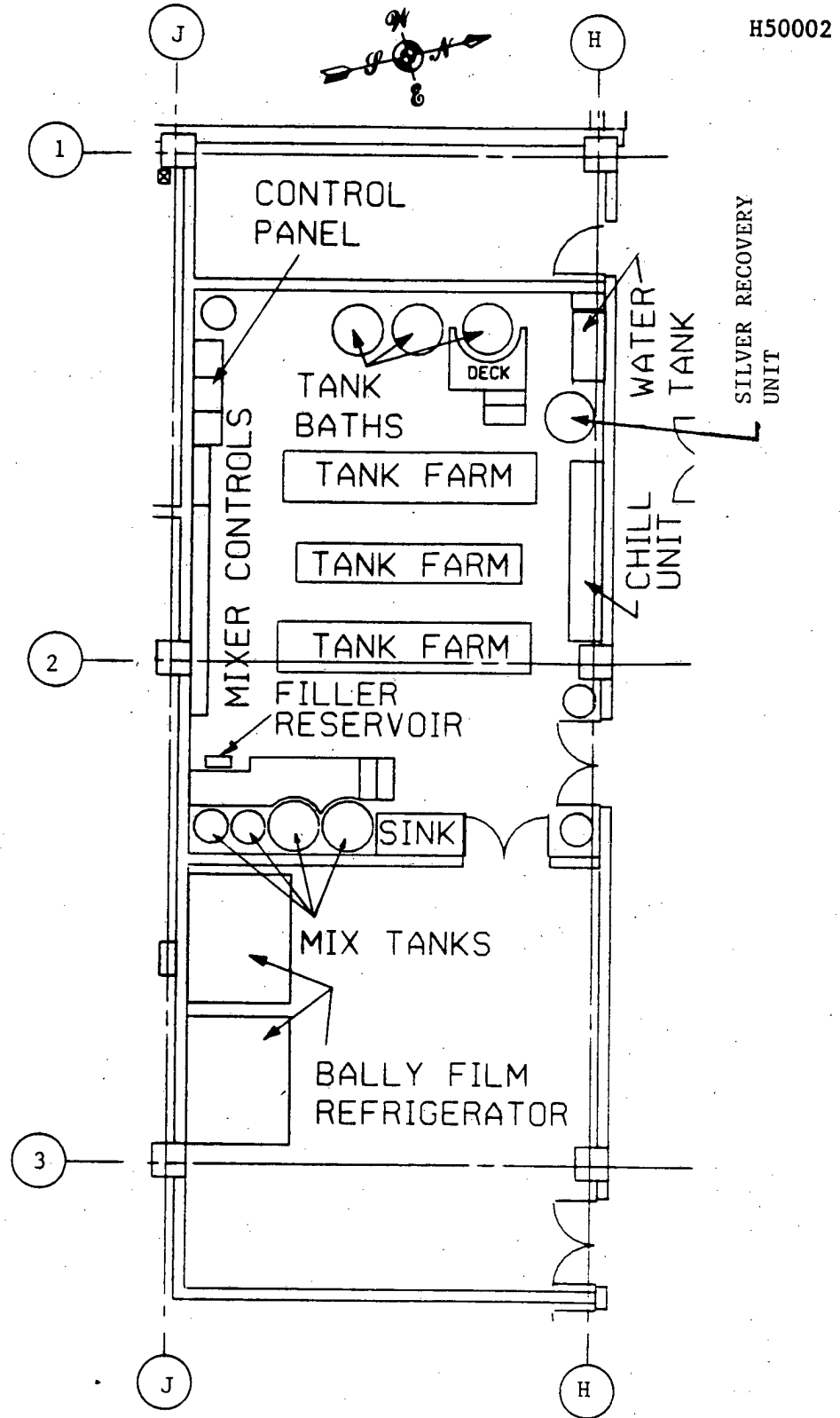


FIGURE 9.2.1-1 TANK FARM ARCHITECTURAL LAYOUT

SECRET

TABLE 9.2.2-1 FILM AND PAPER PROCESSING EQUIPMENT LIST AND REQUIREMENTS

MFG. TYPE AND DESCRIPTION	MFG.	QUANTITY	WEIGHT KILLO LBS.	COOLING REQ'TS (EACH)			ELECTRICAL PWR REQ'TS KVA (EACH)				PANELS
				CFM	KBTU/HR AIR	KBTU/HR WATER	120 VAC 1P, 60HZ	208 VAC 1P, 60HZ	208 VAC 3P, 60HZ	208 VAC 3P, 400HZ	
ROLL FILM PROCESSOR	ALLEN PRODUCTS	1 IN G13	1.2	TEN CHANGES PER HR	20.0*	-	-	7.1	-	-	LG1
SILVER FILM DUPLICATOR	EXTEK MICROSYS	1 IN G14	N/A	-	10.0	-	3.6	-	-	-	PG1
DIAZO ROLL FILM DUPLICATOR	EXTEK MICROSYS	1 IN G15	.2	-	4.2	-	1.8	-	-	-	TBD
FILM CLEANING SYSTEM	LIPSNER SMITH CORP.	1 IN G19	1.0	-	N/A	-	-	4.6	-	-	TBD
B&W FILM PROCESSOR	HOPE INDUST'S	1 IN G26	1.9	TEN CHANGES PER HR	N/A	-	-	8.3	-	-	TBD
DEEP TANK PROCESSOR	TBD	1 IN G18	TBD	TBD	TBD	-	TBD	-	-	-	TBD
20" PAPER PROCESSOR	KREONITE	1 IN G21	TBD	TBD	TBD	-	TBD	-	-	-	TBD

SECRET

SECRET

H50002

TABLE 9.2.2-2 FILM AND PAPER PROCESSING EQUIPMENT LIST AND REQUIREMENTS

(Room G32)												
MFG. TYPE AND DESCRIPTION	MFG.	QUANTITY	WEIGHT KILO LBS.	COOLING REQ'TS (EACH)			ELECTRICAL PWR REQ'TS KVA (EACH)					
				CFM	KBTU/HR AIR	KBTU/HR WATER	120 VAC 1P, 60HZ	208 VAC 1P, 60HZ	208 VAC 3P, 60HZ	208 VAC 3P, 400HZ	PANELS	
CIBACHROME COPY SYSTEM	ILFORD/DAINIPPON	2	1.4	-	N/A	-	-	4.0	-	-	-	PG4
MINI-LAB	HOPE INDUST'S	1	1.7	TEN CHANGES PER HR	7.5	-	-	10.4	-	-	-	PG5
C-41 FILM PROCESSOR	HOPE INDUST'S	1	1.9	TEN CHANGES PER HR	N/A	-	-	8.3	-	-	-	PG4
24" E6 COLOR FILM PROCESSOR	HOPE INDUST'S	1	2.6	TEN CHANGES PER HR	N/A	-	-	7.7	-	-	-	PG4
50", PAPER PROCESSOR	HOPE INDUST'S	1	TBD	TBD	TBD	-	-	TBD	-	-	-	TBD

SECRET

SECRET

H50002

TABLE 9.2.3-2 FILM AND PAPER PRINTING EQUIPMENT LIST AND REQUIREMENTS

MFG. TYPE AND DESCRIPTION	MFG.	QUANTITY	WEIGHT KILO LBS.	COOLING REQ'TS (EACH)			ELECTRICAL PWR REQ'TS KVA (EACH)				PANELS
				CFM	KBTU/HR AIR	KBTU/HR WATER	120 VAC 1P, 60HZ	208 VAC 1P, 60HZ	208 VAC 3P, 60HZ	208 VAC 3P, 400HZ	
B&W PAPER PROCESSOR	KREONITE	1 IN G65	N/A	-	19.5	-	-	6.2	-	-	PG3
ULTRASONIC CLEANER	SONICOR INSTRUM'T	1 IN G65	.9	TEN CHANGES PER HR	N/A	-	-	4.6	-	-	TBD
PAPER DUPLICATOR	XEROX	1 IN G65	2.4	-	13.7	-	-	8.3	-	-	TBD
52" TRACK PAPER PROCESSOR	HOPE INDUST'S	1 IN G68	2.7	TEN CHANGES PER HR	5.5	-	-	-	9.4	-	PG3
DOCUMATE II	DOCUMATE	1 IN G78	TBD	TBD	TBD	-	TBD	-	-	-	TBD
312 COLOR PRINTER	KODAK	1 IN G44		-	5.0	-	1.8*	-	-	-	TBD
SPECIAL EFFECTS PRINTER	OXBERRY	1 IN G60	TBD	-	TBD	-	TBD	-	-	-	TBD
30" PAPER CUTTER	CHALLENGR	1 IN G65	TBD	TBD	N/A	-	TBD	-	-	-	TBD

* 1.6 KVA of 208 VAC ALTERNATE

SECRET

9-9

SECRET

H50002

SECRET

H50002

9.3 Printing Operations

The Printing Operations located on the first floor consist of VTRs and Printing Services Facilities. See Figure 9.3-1 for a floor plan of the first floor showing the Operations Critical areas shaded, and Figure 9.3-2 for the footprint of the critical Equipment therein.

9.3.1 Electronic Prepress

The Electronic Prepress is located in Rooms 128 and 129 in a raised floor computer environment. Table 9.3.1-1 lists the physical characteristics of the operations significant equipment therein.

9.3.2 Camera/Layout/Plate Areas

Rooms 123, 127, 130, 139, 140, 141, 142, 143, 144, 145, 147, 148, 149, 150, 151, 152, and 153 are dedicated to Camera/Layout and Plate composition activities. Table 9.3.2-1 lists the physical characteristics of the operations significant equipment therein.

9.3.3 Press & Bindery Areas

Rooms 112 and 113 are dedicated to Press and Bindery operations. Table 9.3.3-1 lists the physical characteristics of the operations significant equipment therein and Figure 9.3.3-1 shows the location and footprint of these equipment..

SECRET

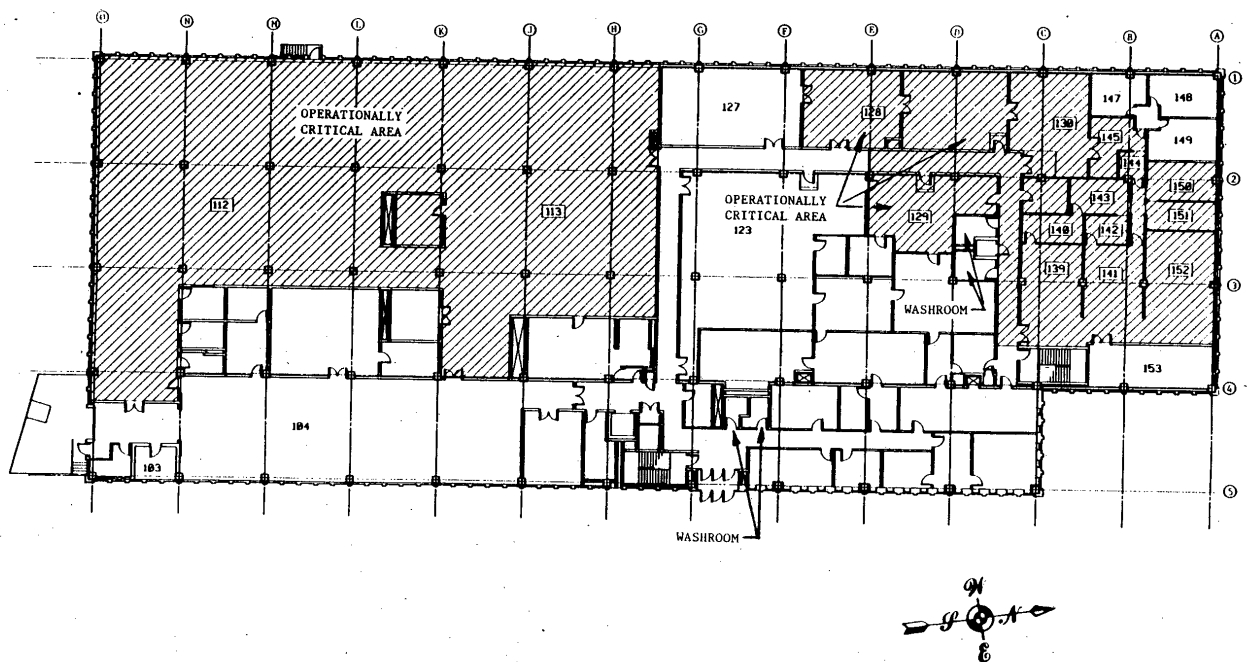


FIGURE 9.3-1 FIRST FLOOR ARCHITECTURAL LAYOUT

SECRET
9-11

SECRET

H50002

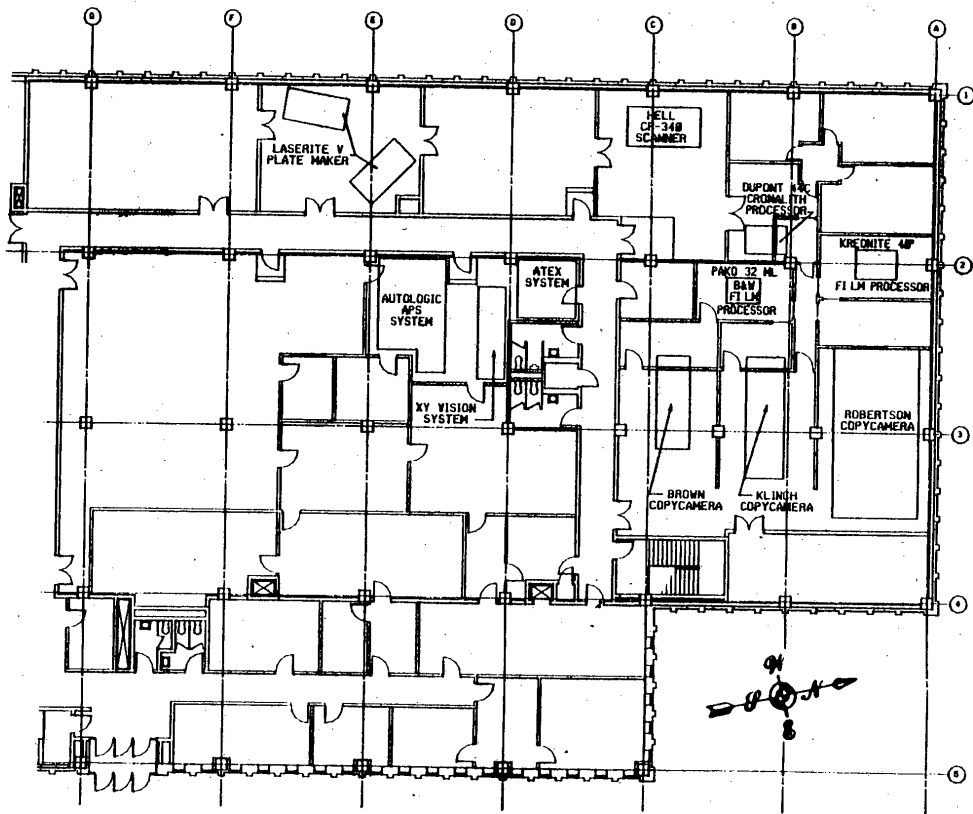


FIGURE 9.3-2 PRINTING OPERATIONS EQUIPMENT FOOTPRINT

SECRET

9-12

SECRET

H50002

TABLE 9.3.1-1 ELECTRONIC COMPOSITION EQUIPMENT LIST AND REQUIREMENTS
(Rooms 128 & 129)

MFG. TYPE AND DESCRIPTION	MFG.	QUANTITY	WEIGHT KILO LBS.	COOLING REQ'TS (EACH)			ELECTRICAL PWR REQ'TS KVA (EACH)				PANELS
				CFM	KBTU/HR AIR	KBTU/HR WATER	120 VAC 1P, 60HZ	208 VAC 1P, 60HZ	208 VAC 3P, 60HZ	208 VAC 3P, 400HZ	
ATEX SYSTEM	ATEX	ONE IN RM 129	-	-	62.7	-	9.6	8.8	-	-	ONE IN ROOM 129
CDC SYSTEM	CDC	ONE IN RM 129	-	-	15.0	-	-	-	4.4	-	ONE IN ROOM 129
APS 5	AUTOLOGIC	ONE IN RM 129	-	-	30.0	-	-	-	8.8	-	ONE IN ROOM 129
Xy VISION	Xy VISION	ONE IN RM 129	-	-	30.0	-	-	8.8	-	-	ONE IN ROOM 129
LASERITE V PLATE MAKER	SCIENTIFC	TWO IN RM 128	-	-	30.0	-	3.6	-	(440 VAC) 23.0	-	IN MECH'L ROOM

SECRET

9-13

SECRET

H50002

TABLE 9.3.2-1 CAMERA/LAYOUT/PLATE EQUIPMENT LIST AND REQUIREMENTS

MFG. TYPE AND DESCRIPTION	MFG.	QUANTITY	WEIGHT KILO LBS.	COOLING REQ'TS (EACH)			ELECTRICAL PWR REQ'TS KVA (EACH)				PANELS
				CFM	KBTU/HR AIR	KBTU/HR WATER	120 VAC 1P, 60HZ	208 VAC 1P, 60HZ	208 VAC 3P, 60HZ	208 VAC 3P, 400HZ	
CP-340 SCANNER	HELL	ONE IN RM 130		-	N/A	-	-	3.0	-	-	TBD
32-ML B&W FILM PROCESSOR	PAKO	ONE IN RM 143		-	11.5	-	-	-	5.8	-	TBD
44 C CRONALITH PROCESSOR	DUPONT	ONE IN RM 145		300	TBD	-	-	12.5	-	-	TBD
42" FILM PROCESSOR	KREONITE	ONE IN RM 150		-	TBD	-	-	6.6	-	-	TBD

SECRET

9-14

SECRET

H50002

TABLE 9.3.3-1 PRESS AND BINDERY EQUIPMENT LIST AND REQUIREMENTS

(Room 113)

MFG. TYPE AND DESCRIPTION	MFG.	QUANTITY	WEIGHT KILO LBS.	COOLING REQ'TS (EACH)			ELECTRICAL PWR REQ'TS KVA (EACH)				PANELS
				CFM	KBTU/HR AIR	KBTU/HR WATER	120 VAC 1P, 60HZ	208 VAC 1P, 60HZ	208 VAC 3P, 60HZ	208 VAC 3P, 400HZ	
MIEHLE COLOR PRESS	M.A.N. ROLAND	1	67.5*	-	N/A	-	-	-	188.0	-	ROOM G5
9900 PAPER DUPLICATOR	XEROX	2	3.3	-	26.6	-	-	10.4	-	-	PG3(B)
25" FAVORITE PRESS	MIEHLE	2	7.0	-	N/A	-	-	-	6.3	-	PG3(A)
PLATEN	CHANDLER PRICE	1	3.5	-	N/A	-	-	-	6.3	-	PG3(A)
TBD	HEIDEL- BERG	1	8.7	-	N/A	-	-	-	12.5	-	TBD
TBD	TOMAC	1	.6	-	TBD	-	-	-	4.1	-	PG3(B)
TBD	A-B DICK	1	.6	-	N/A	-	1.8	-	-	-	PG3(B)
VERTICAL PRESS	MIEHLE	1	3.0	-	N/A	-	-	-	6.2	-	PG3(A)
ENVELOPE PRESS	TBD	1	1.2	-	N/A	-	-	-	6.2	-	PG3(B)
MIEHLE 40" 1 COLOR	M.A.N. ROLAND	1		-	N/A	-	-	-	36.0	-	TBD
MIEHLE 40" 2 COLOR	M.A.N. ROLAND	1		-	N/A	-	-	-	50.0	-	TBD
50" MIEHLE	M.A.N. ROLAND	1		-	N/A	-	-	-	89.0	-	TBD

SECRET

9-15

SECRET

H50002

TABLE 9.3.3-1 PRESS AND BINDERY EQUIPMENT LIST AND REQUIREMENTS (Continued)

MFG. TYPE AND DESCRIPTION	MFG.	QUANTITY	WEIGHT KILO LBS.	COOLING REQ'TS (EACH)			ELECTRICAL PWR REQ'TS KVA (EACH)				PANELS
				CFM	KBTU/HR AIR	KBTU/HR WATER	120 VAC 1P, 60HZ	208 VAC 1P, 60HZ	208 VAC 3P, 60HZ	208 VAC 3P, 400HZ	
GOSS WEBB PRESS SYSTEM	ROCKWELL	1	47.0	-	MINOR	-	1.8	-	52.0	-	P9
52" CUTTER	LAWSON	2	3.0	-	MINOR	-	-	-	6.6	-	P1/14
SADDLE/GATHERER/ STITCHER	DEXTER	1	0.6	-	MINOR	-	-	-	15.4	-	P2/20
PERFECT BINDER	MULLER MARTINI	1	0.4	10" EXHAUST	MINOR	-	-	-	6.6	-	P1/4
3 KNIFE TRIMMER	WOHLEN- BERG	1	4.0	-	MINOR	-	-	-	8.8	-	P1/27
18" FOLDER	MULLER MARTINI	1	1.5	-	MINOR	-	-	-	3.3	-	TBD
40" FOLDER	BAUM	1	3.5	-	MINOR	-	-	-	6.6	-	P1/25
12 STATION COLLATOR	HARRIS/ MACEY	1	1.2	-	MINOR	-	-	-	6.6	-	P1/20
PADDER	KANSA	1	0.8	-	18" EXHAUST	-	-	-	8.8	-	P2/23
SIDEBINDER	HARRIS/ MACEY	1	1.5	-	MINOR	-	-	-	6.6	-	P1/15
MULTIBINDER	HARRIS/ MACEY	1	1.0	-	MINOR	-	-	-	6.6	-	P1/15

SECRET

9-16

SECRET

H50002

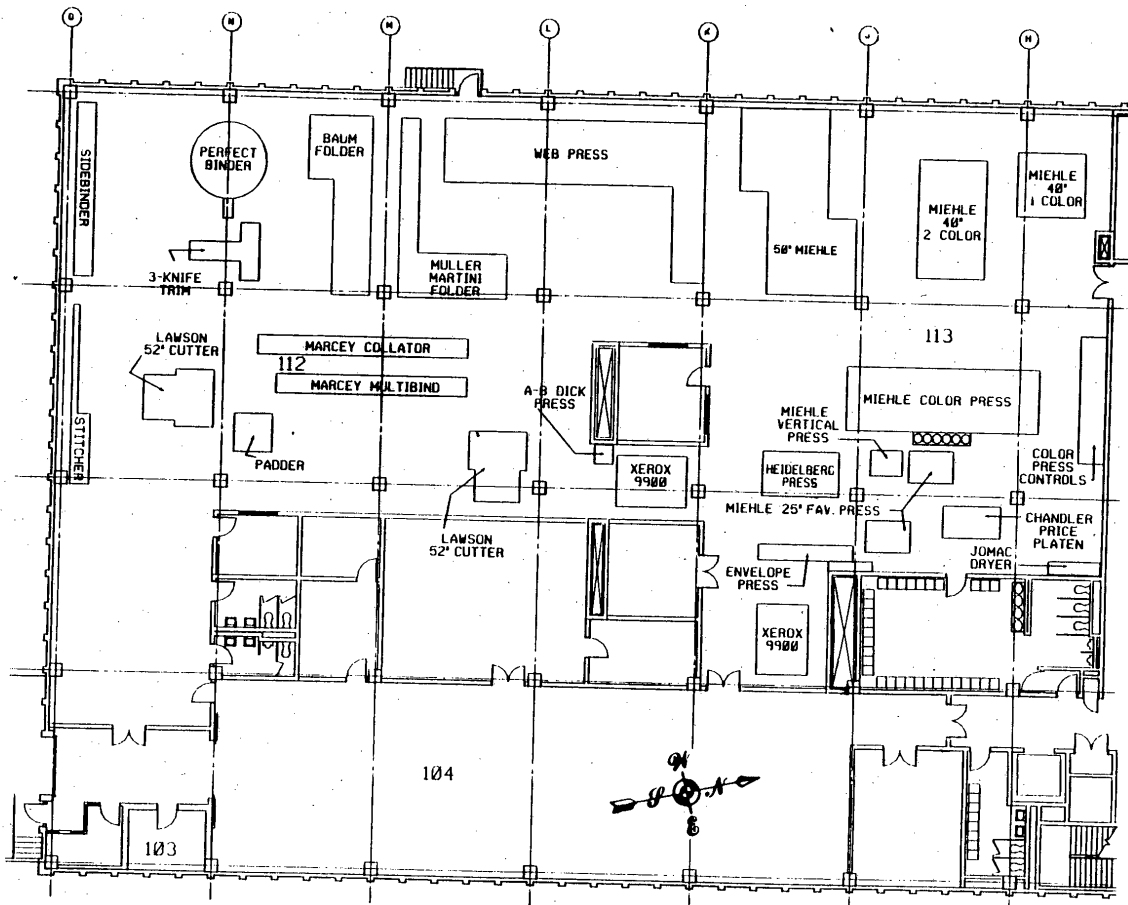


FIGURE 9.3.3-1 PRESS & BINDERY EQUIPMENT FOOTPRINT (Room 113)

SECRET

9-17

SECRET

H50002

SECRET

H50002

9.4 STORAGE FACILITIES

The critical storage rooms in the P&PB and the Figure number of the architectural layout locating each room are:

Room 103	Solvents	Figure 9.3-1
Room 104	Bulk Materials & Supplies	Figure 9.3-1
Room G6	Chemicals & Walk-in Freezers	Figure 9.2-1
Room G75	Paper & Film Cold Storage	Figure 9.2-1

SECRET