

1146203 Plant Jordan

69491

3054399

THE GREAT CONSTRUCTION SCHEMES OF COMMUNISM

# Takhia Tash



The Amu Darya River as it looks near Takhia Tash

A. BIZYAYEV,  
Assistant Chief of Construction  
of the Main Turkmen Canal

Photos by M. GRACHOV

As recently as two years ago Takhia Tash, a stony headland on the banks of the Amu Darya River, was an out-of-the-way spot hardly known to anyone. But in this short span of time it has changed beyond recognition, for it has become the base for our onslaught on the desert, the point at which the Main Turkmen Canal takes its start.

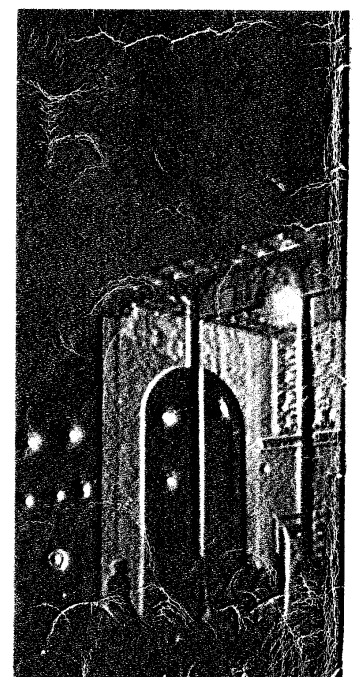
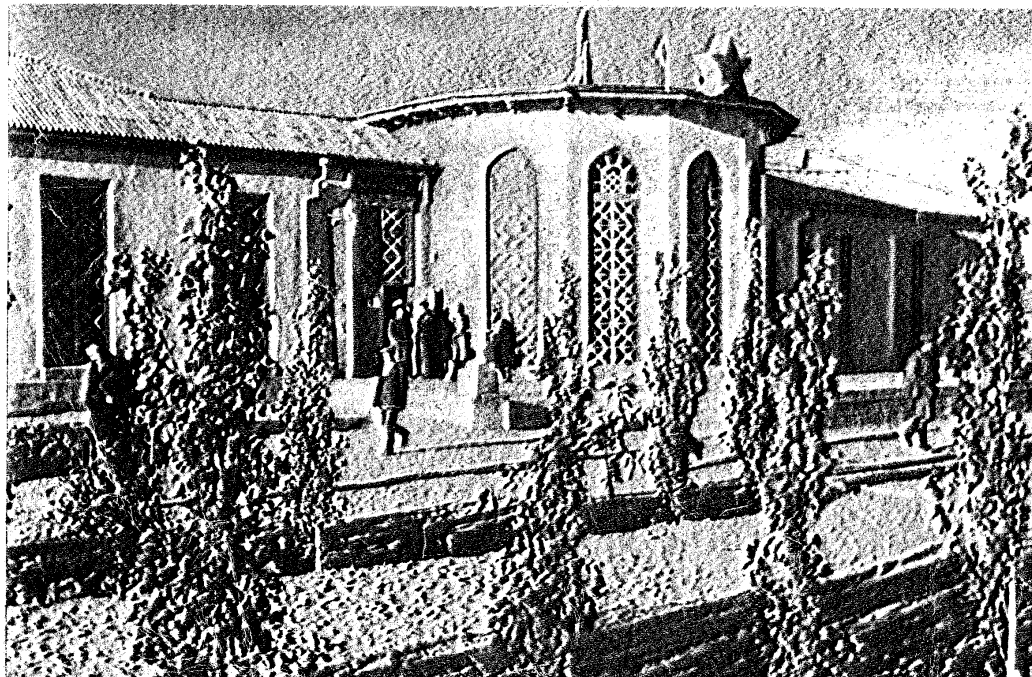
At the end of October 1950 the first group of construction workers arrived in Takhia Tash where temporary accommodation was arranged for them. By now Takhia Tash has become a full-sized town with a population of several thousands. Hundreds of comfortable houses line its 24 streets. A piped water supply, asphalted streets, a secondary school, library, post office, restaurant and cinema are among the amenities already available.

But the town keeps on growing and developing. Before long a hospital and polyclinic and a club will be in service, as well as a central heating system is under way.

Lines of young trees have converted many streets into boulevards. Gardens around houses and in courtyards greatly beautify the scene. A total of over 150,000 trees has already been planted. In a few years' time, what was so recently a desert, rocky waste will be a town covered with orchards and groves.

Takhia Tash has become a place where almost every building trade and profession is represented. The state is taking good care of those engaged in the construction of the Main Turkmen Canal, supplying everything needed to make the job a success, and of course paying attention to the cultural aspects of life.

The restaurant for canal builders in Takhia Tash



3054399