

6132

CP-10-5d

ATTENTION: This form will be placed on top of and attached to each Top Secret document received by the Central Intelligence Agency or classified Top Secret within the CIA and will remain attached to the document until such time as it is downgraded, destroyed, or transmitted outside of CIA. Access to Top Secret matter is limited to Top Secret Control personnel and those individuals whose official duties relate to the matter. Top Secret Control Officers who receive and/or release the attached Top Secret material will sign this form and indicate period of custody in the left-hand columns provided. Each individual who sees the Top Secret document will sign and indicate the date of handling in the right-hand columns.

[illegible]

NOTICE OF DETACHMENT: When this form is detached from Top Secret material it shall be completed in the appropriate spaces below and transmitted to Central Top Secret Control for record.

DOWNGRADED		DESTROYED		DISPATCHED (OUTSIDE CIA)	
TO		BY (Signature)		TO	
BY (Signature)		WITNESSED BY (Signature)		BY (Signature)	
DATE		DATE		OFFICE	DATE

TOP SECRET

Job # 6f-T-31
Box IV

25X1
25X1

COPY NO. 17

PHOTOGRAPHIC INTELLIGENCE REPORT

AIRFRAME PLANT 31 AND TBILISI/SOGANLUG AIRFIELD

TBILISI, USSR

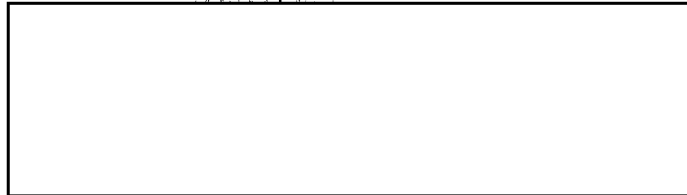


25X1

18 APRIL 1958
RR-GP/DP-10-58

CENTRAL INTELLIGENCE AGENCY

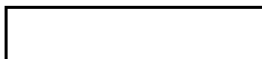
TOP SECRET



PHOTOGRAPHIC INTELLIGENCE REPORT

AIRFRAME PLANT 31 AND TBILISI/SOGANLUG AIRFIELD

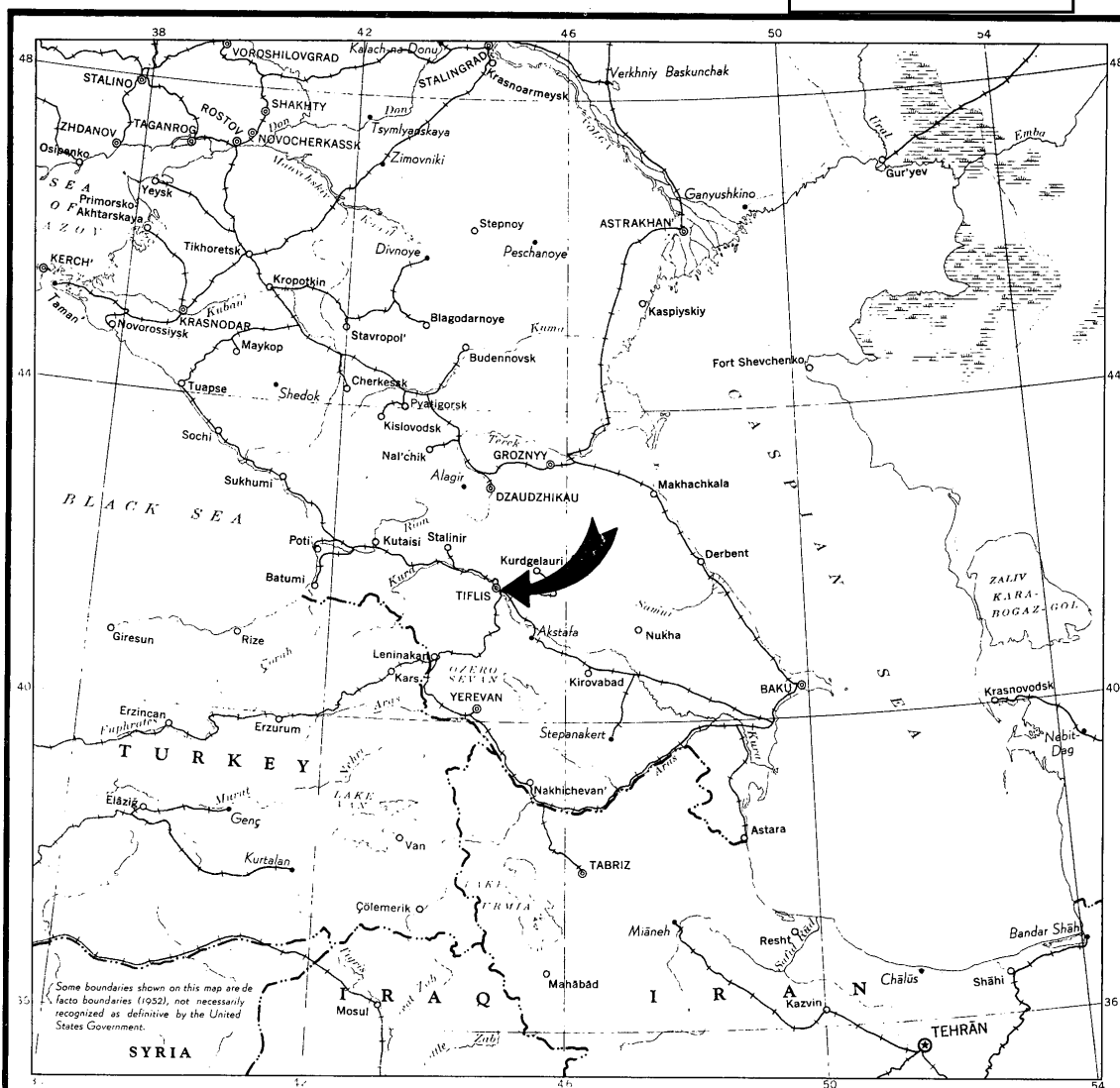
TBILISI, USSR



18 April 1958
RR-GP/DP-10-58

25X1

TOP SECRET



U. S. S. R. CAUCASUS

--- International boundary

⊙ National capital

— Road (selected)

—+— Railroad (selected)

Scale 1:8,500,000

0 100 200 300 Miles
0 100 200 300 Kilometers

Base 11960 3-52

TOP SECRET

25X1

25X1

PREFACE

This photo analysis of Airframe Plant 31 and Tbilisi/Soganlug
Airfield is based on small format photography

25X1

25X1

and has been
prepared by the Photo Intelligence Division of ORR. Tbilisi/Soganlug
Airfield is also described in two previous reports in this series

25X1

TOP SECRET

TOP SECRET

25X1

25X1

AIRFRAME PLANT 31 AND TBILISI/SOGANLUG AIRFIELD

TBILISI, USSR

Airframe Plant 31, which includes approximately 5,470,000 square feet of secured area and 1,200,000 square feet of floor space, is situated on the north side of the Kura River and southeast of the commercial and industrial section of Tbilisi. This airframe plant is currently engaged in the production of jet-type fighter aircraft, possibly including a new delta-wing fighter. The photography shows six jet fighters in the plant area. Five MIG-17s (Frescos) are adjacent to the south side of the final assembly building and one possible delta-wing aircraft is located just south-southeast of the final assembly building. The plant is served by a rail spur which branches off the electrified single-track Tbilisi-Leninakan railroad and enters the northeast corner of the factory. A hard-surface all-weather road enters from the northwest and serves all plant facilities. It is over an extension of this road that the assembled aircraft are transported to Tbilisi/Soganlug Airfield, the test and fly away field.

Tbilisi/Soganlug Airfield is located approximately two nautical miles southeast of the airframe plant (see orientation map) and between the Kura River and the Tbilisi-Baku Railroad. The runway, oriented in a north-northwest/south-southeast direction, measures 6,000 by 270 feet.

Components of Airframe Plant 31 and certain installations at Tbilisi/Soganlug Airfield are identified on the annotated plates and described in the accompanying key.

TOP SECRET

25X1

25X1

KEY TO ANNOTATIONSAIRFRAME PLANT 31

1. Main entrance with two gatehouses, gable roofs, 75' x 10' each.
2. Possible administration building, two-story, hip roof, [] 25X1
3. Possible administration building, single-story, T-shaped, gable roof, [] 25X1
4. Probable compressor building, two-story, monitor roof, [] 25X1
[] 25X1
5. Probable foundry, single-story, monitor roof, [] 25X1
[] 25X1
6. Probable workshop, gable roof, [] 25X1
7. Probable storage buildings (three), gable roofs, [] 25X1
[] 25X1
8. Warehouses (two), monitor roofs, [] height of each 25';
floor space 33,660 sq. ft. each. 25X1
9. Possible carpenter shop, monitor roof, [] floor space 56,265
sq. ft. 25X1
10. Boilerhouse, two-story, monitor roof, [] 25X1
sq. ft.; rail spur enters building. Open coal storage adjacent to the
boilerhouse.
11. Stack associated with boilerhouse.
12. Unidentified building, monitor roof, [] height 20'; floor space 25X1
[] 25X1
13. Possible bunker.
14. Possible sheet-metal and forge shop, U-shaped with two monitor-roofed
wings; main building [] 25X1
[] 25X1
15. Concrete loading platform, [] 25X1
16. Possible warehouse, flat roof, [] height 25' 25X1
17. Possible storage building, low-pitch gable roof, 100' x 65'; floor space
6,500 sq. ft.

25X1

KEY TO ANNOTATIONS (Con't)

18. Possible workshops (three), gable roofs, [redacted] 25X1
[redacted] floor space 8,145 sq. ft. 25X1
19. Possible foundry, flat roof.
20. Hard-surface all-weather road to Tbilisi/Soganlug Airfield
21. Lumber yard
22. Sawmill, gable roof, [redacted] 25X1
23. Carpenter shop, gable roof, [redacted] 25X1
24. Workshop, gable roof, [redacted] 25X1
25. Probable vehicle repair shop, monitor roof [redacted] 25X1
[redacted] Many vehicles observed in area. 25X1
26. Possible storage building, low-pitch gable roof, [redacted] 25X1
27. Possible headquarters building for plant guards.
28. Possible firehouse, [redacted] 25X1
29. Possible storage building, [redacted] 25X1
30. Possible engineering offices and electrical shop, flat roof, [redacted] 25X1
30'; height 55'; floor space 11,460 sq. ft.
31. Possible maintenance shop, low-pitch gable roof, [redacted] 25X1
[redacted] 25X1
32. Final assembly building, monitor roof, [redacted] height 20'; 25X1
floor space 534,540 sq. ft.
33. Possible gas-generator building [redacted] 25X1
34. Water works with filter elements and pumphouse.
35. Firing-in butt. Building at head of firing ramp, low-pitch gable 25X1
roof, [redacted]
36. Possible oxygen station, [redacted] height 20'; floor space 11,440 25X1
sq. ft.
37. Precision machine workshop and subassembly building, monitor roof 25X1
[redacted]

25X1

25X1

KEY TO ANNOTATIONS (Con't)

38. Possible warehouse.

39. Possible machine shop with monitor roof, single-story, height 10'

25X1

25X1

40. Possible administration building, single-story, hip roof, 255' x 50'

TBILISI/SOGANLUG AIRFIELD

1. Possible administration building, single-story, L-shaped, gable roof,

25X1

2. Probable barracks, single-story, gable roof, floor space 7,000 sq. ft.

25X1

3. Operations building with control tower, single-story, gable roof, floor space 6,795 sq. ft.

25X1

4. Communications area with numerous single-pole antennas.

5. Nose-hangar with seven bays,

25X1

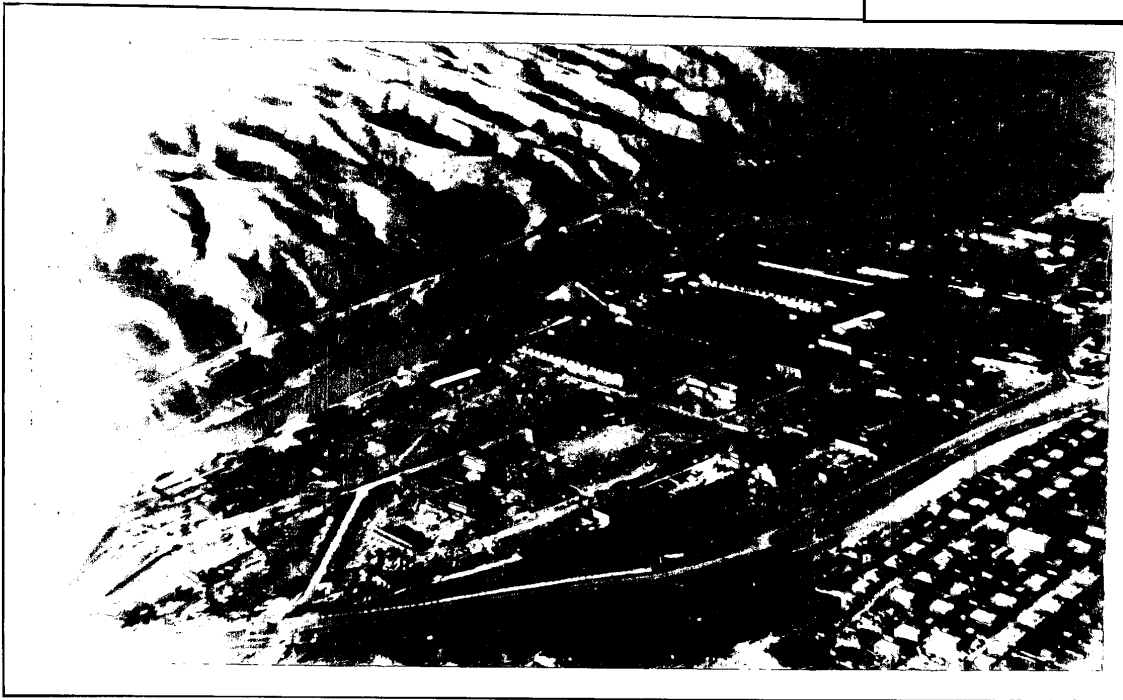
6. Concrete parking apron, 1,900' x 120'; area 228,000 sq. ft.

7. Concrete hardstand, diameter 130'.

TOP SECRET

25X1

25X1



AIRFRAME PLANT 31
TBILISI, USSR

TOP SECRET

TOP SECRET

25x1



TO TBILISI

TBILISI AIRFRAME
PLANT 31

ELECTRIC

2 MI.

ELECTRIC

KURA RIVER

TBILISI SOGANLUG A/F

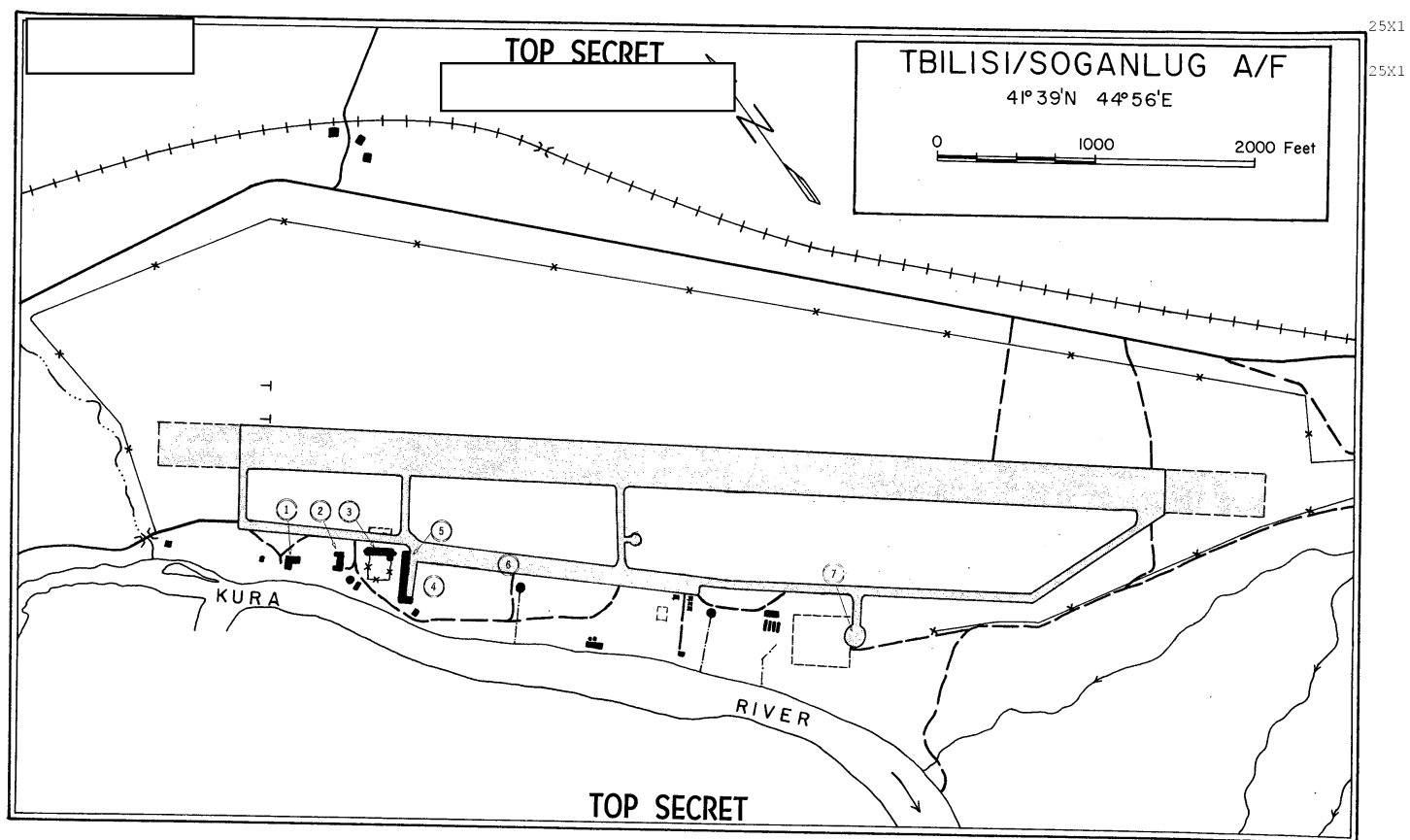
TO RUSTAVI

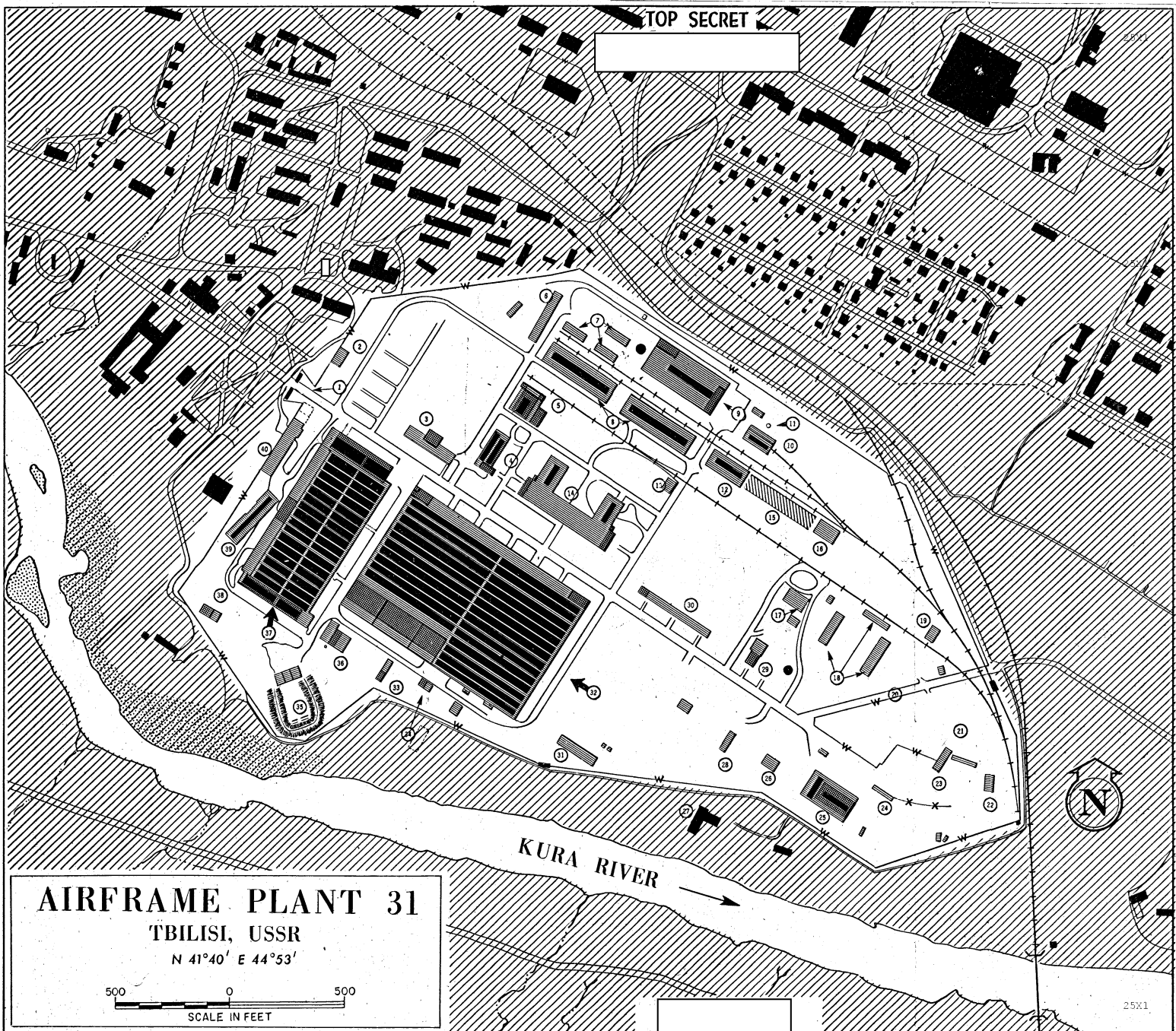
TO LENINAKAN

ORIENTATION MAP

TOP SECRET

25x1





TOP SECRET

TOP SECRET