

PHOTOGRAPHIC INTERPRETATION REPORT



KH-7 MISSION 4037
23-30 MAY 1967

MIDDLE EAST EDITION

Declassification Review by
NGA/DoD

JUNE 1967
COPY 202
32 PAGES

25X

25X

GROUP 1 EXCLUDED FROM
AUTOMATIC DOWNGRADING
AND DECLASSIFICATION

25X1

Approved For Release 2005/11/17 : CIA-RDP03-00140R000100010052-4

Approved For Release 2005/11/17 : CIA-RDP03-00140R000100010052-4

X1

25X

Approved For Release 2005/11/04 : CIA-RDP03-00140R000100010052-4

TOP SECRET

KH-7 MISSION 4037, 23-30 MAY 67

25X

TABLE OF CONTENTS

PREFACE	2
TRACK OF MISSION	3
HIGHLIGHTS	4
MISSILES	5
AIR FACILITIES	8
NAVAL ACTIVITY/PORTS	13
BIOLOGICAL/CHEMICAL WARFARE	17
MILITARY ACTIVITY	19
COMPLEXES	21
INDEX OF TARGETS	22
ATTACHMENTS	APPENDIX

25X

Approved For Release 2005/11/04 : CIA-RDP03-00140R000100010052-4

TOP SECRET

25X

PREFACE

THIS IS THE FIRST AND ONLY OAK REPORT ON MISSION 4037 COVERING THE HIGHEST PRIORITY MIDDLE EAST COMOR TARGETS OBSERVED ON THE PHOTOGRAPHY. A LISTING OF COMOR TARGET CATEGORIES APPEARS ON THE INSIDE OF THE FRONT COVER. THE HIGHEST PRIORITY FAR EAST COMOR TARGETS WILL BE REPORTED IN [REDACTED] AND THE REMAINING HIGHEST PRIORITY TARGETS, PRIMARILY IN THE USSR, WILL BE REPORTED IN [REDACTED]

TARGETS ARE ARRANGED IN THE OAK BY SUBJECT AND WITHIN EACH SUBJECT BY COMOR TARGET NUMBER. TARGETS OF OPPORTUNITY OBSERVED DURING THE OAK REPORTING PERIOD ARE LISTED NUMERICALLY UNDER THE APPROPRIATE SUBJECT AFTER THE LISTING OF COMOR TARGETS. LOCATIONS OF TARGETS IN THIS REPORT ARE INDICATED BY THE COUNTRY CODE PRECEDING THE COORDINATES. COUNTRY CODE ABBREVIATIONS ARE PRINTED ON THE INSIDE OF THE BACK COVER PAGE.

SELECTED PHOTOGRAPHIC REFERENCES FOR EACH TARGET OBSERVED AND REPORTED FOLLOW THE DESCRIPTION OF THE TARGET. PASS NUMBERS, SUFFIXED WITH A FOR ASCENDING AND D FOR DESCENDING, ARE LISTED FIRST, FOLLOWED BY FRAMES WHICH ARE INDICATED BY THE FRAME NUMBER WITH AN INDEX NUMBER RUNNING CONSECUTIVELY FROM THE BEGINNING OF EACH PASS -- 4/8 FOR EXAMPLE, MEANS FRAME 4, INDEX 8. UNIVERSAL REFERENCE GRID COORDINATES FOR NEW TARGETS ARE GIVEN IN PARENTHESIS AFTER THE INDEX NUMBER TO WHICH THEY APPLY. THIS GRID IS IDENTIFIED AS UNIVERSAL GRID NO 1, FEB 64. SYMBOLS INDICATING CONDITIONS WHICH AFFECT THE APPEARANCE OF THE TARGET ON THE PHOTOGRAPHY ARE -- C (CLEAR), SC (SCATTERED CLOUD COVER), HC (HEAVY CLOUD COVER), H (HAZE), CS (CLOUD SHADOW), S (SNOW), O (OBLIQUITY), SD (SEMIDARKNESS), D (DARKNESS), GC (GROUND COVER), CF (CAMOUFLAGE), AND GR (GROUND RESOLUTION).

INTERPRETABILITY OF THE PHOTOGRAPHY IS CATEGORIZED AS G (GOOD), F (FAIR), OR P (POOR). THE EXTENT OF PHOTOGRAPHIC COVERAGE IS DENOTED BY THE SYMBOLS T (TOTAL) OR PT (PARTIAL). THE MODE OF COVERAGE IS INDICATED BY ST (STEREO), PS (PARTIAL STEREO), OR NS (NON-STEREO).

THE INITIAL SCAN OF THE PHOTOGRAPHY IS ACCOMPLISHED IN A SHORT TIME AND PRIOR TO FINAL REFINEMENT OF EPHEMERIS DATA. CONSEQUENTLY, FUTURE DETAILED ANALYSIS MAY RESULT IN MINOR ALTERATIONS. MOREOVER, RECIPIENTS ARE CAUTIONED THAT THE IDENTIFICATION OF TARGETS IS BASED PRIMARILY ON PHOTOGRAPHY AND DOES NOT CONSTITUTE A FINISHED INTELLIGENCE JUDGMENT.

25X1

Approved For Release 2005/11/17 : CIA-RDP03-00140R000100010052-4

Approved For Release 2005/11/17 : CIA-RDP03-00140R000100010052-4

Highlights

K1

TOP SECRET

25X

25X

KH-7 MISSION 4037, 23-30 MAY 67

HIGHLIGHTS

K1



AIR ACTIVITY -- IN NO INSTANCE ARE ALL AIRFIELDS IN A COUNTRY IMAGED. HOWEVER, OB COUNTS IN SOME INSTANCES ARE GREATER THAN



25X

SYRIA, THREE AIRFIELDS ARE IMAGED. OB CONSISTS OF 31 FISHBED AND 6 FAGOT/FRESCO AT TIAZ AND SAYQAL, WHICH IS THE FIRST TIME AIRCRAFT HAVE BEEN SEEN AT THESE FIELDS. IN IRAQ, FIVE AIRFIELDS ARE IMAGED. NOTABLE HERE ARE 43 HUNTER AT HABBANIYAH PLATEAU AIRFIELD. ONLY TWO EGYPTIAN AIRFIELDS, RAS BANAS (NO OB) AND RAS UMM SID (2 CRATE AND 1 HOUND) ARE IMAGED.

NAVAL ACTIVITY -- RELATIVELY LITTLE NAVAL ORDER OF BATTLE IS OBSERVED. MOST NOTABLE ARE 2 KOMAR PTG AT AL LADHIQIYAH, SYRIA, 2 PF AT AS SUWAYS, EGYPT, AND 2 PINCHED-BOW COMBATANTS AT THE SHARM ASH SHAYKH NAVAL DEPLOYMENT FACILITY, EGYPT.



25X

THE HABBANIYA PLATEAU AIRFIELD MILITARY AREA, IRAQ, 32 TANKS/ASSAULT GUNS AND 310 CARGO TRUCKS ARE THE LARGEST CONCENTRATION OF VEHICLES REPORTED. AT SHARM ASH SHAYKH, EGYPT, NO GUNS ARE OBSERVED AT THE COASTAL DEFENSE POSITION. NO TROOP CONCENTRATIONS ARE OBSERVED. APPROXIMATELY 50 CARGO TRUCKS ARE VISIBLE IN THE AREA.

SAM ACTIVITY -- THREE SAM SITES AND TWO SAM SUPPORT FACILITIES ARE OBSERVED IN EGYPT. NONE OF THE LAUNCH POSITIONS ARE OCCUPIED. HOWEVER, NUMEROUS MISSILE CANISTERS ARE OBSERVED AT BOTH SAM SUPPORT FACILITIES.

STATUS OF TARGET READOUT

THIS OAK REPORTS ON 33 COMOR TARGETS, 11 NON-COMOR TARGETS, AND 4 BONUS TARGETS.

TOP SECRET

25X

25X

Missiles

TOP SECRET

KH-7 MISSION 4037, 23-30 MAY 67

MISSILES

JABAL HAMZI SSM COMPLEX

EG 3008N 03036E

A VERTICAL STATIC TEST STAND IS IN THE MID-STAGE OF CONSTRUCTION EAST OF THE L-SHAPED CHECKOUT BUILDING. THE MAJOR PARTS OF THE FOUNDATION, FLAME DEFLECTOR, AND ACCESS RAMP ARE PRESENT. A PROJECTION FOR HOLDING THE TEST ARTICLE IS POSITIONED OVER THE FLAME DEFLECTOR. THE PROJECTION, WHICH IS SUPPORTED FROM UNDERNEATH ON EACH SIDE, IS [REDACTED] FT OVERALL IN PLAN DIMENSIONS, AND HAS A CENTER OPENING OF [REDACTED]. THE FOUNDATION IS APPROXIMATELY [REDACTED] OVERALL. SUPPORTS AND 2 LEVELS ARE VISIBLE ON THE WEST SIDE. APPARENTLY 3 LEVELS HAVE BEEN COMPLETED ON THE EAST SIDE. THE THIRD LEVEL MEASURES [REDACTED] OVERALL. THE ACCESS RAMP CONTAINS 2 LEVELS, THE HIGHER IS ABOVE THE CURRENT LEVEL OF THE FOUNDATION AND APPROXIMATELY EVEN WITH THE HEIGHT OF THE OVERHANGING PROJECTION. IN THE CURRENT STAGE OF CONSTRUCTION, THE EXACT FUNCTION OF THE STAND AS TO ROCKET ENGINE/STAGE/COMPLETE MISSILE CANNOT BE DETERMINED. IT IS NOT IDENTICAL TO SOVIET TEST STANDS. HOWEVER, IT IS SOMEWHAT SIMILAR TO STAND NO 1 AT THE KURUMOCH ROCKET ENGINE TEST FACILITY, WHICH IS A LIQUID PROPELLANT STAND 80 X 70 FT WITH A [REDACTED] PROJECTION.

THREE LAUNCH POSITIONS NORTH OF THE SUPPORT AREA CAN NOW BE CONFIRMED. SINCE PREVIOUS COVERAGE, THE FLAME DEFLECTOR AT THE SE LAUNCH POSITION HAS BEEN MOVED TOWARD THE LAUNCH/TEST STAND AND A SECOND PROBABLE FLAME DEFLECTOR HAS BEEN ADDED TO THE NW LAUNCH POSITION. TWO SEMI-BURIED TANKS ARE UNDER CONSTRUCTION NEAR THE L-SHAPED CHECKOUT BUILDING. BUILDINGS REPORTED UNDER CONSTRUCTION ON [REDACTED] NOW APPEAR TO BE COMPLETE. IN THE SUPPORT AREA, A BUILDING IS UNDER CONSTRUCTION AND UNIDENTIFIED SCARRING IS OBSERVED. NO MISSILES OR MISSILE-RELATED EQUIPMENT OBSERVED.

(SEE ATTACHMENT)

[REDACTED]

AS SUWAYS SAM SITE B22-2

EG 2943N 03220E

SITE CONTAINS 6 REVETTED LAUNCH POSITIONS, 5 OCCUPIED BY LAUNCHERS ONLY AND 1 WITH LAUNCHER AND A COVERED

TOP SECRET

TOP SECRET

Approved For Release 2005/11/17 : CIA-RDP03-00140R000100010052-4

KH-7 MISSION 4037, 23-30 MAY 67

MISSILE TRANSPORTER, AND A REVETTED GUIDANCE AREA WITH 1 BUILDING AND PROTECTIVE COVERING. NO RADAR OBSERVED. THREE REVETTED, COVERED MISSILE-HOLD POSITIONS AND 7 REVETTED, COVERED VEHICLE/EQUIPMENT POSITIONS ARE OBSERVED. THE ON-SITE SUPPORT AREA CONSISTS OF 14 BUILDINGS.

THE ALTERNATE SITE 3,000 FT NW OF THE LAUNCH AREA IS UNOCCUPIED. THE LAUNCH AREA AND SUPPORT AREA ARE SINGLY FENCED.

[REDACTED]

AS SUWAYS SAM SUPPORT FACILITY

EG 2959N 03231E

[REDACTED]

FACILITY CONTAINS 1 LARGE AND 1 SMALL DRIVE-THROUGH BUILDING AND 3 REVETTED BUILDINGS. AN ON-SITE SUPPORT AREA WITH 3 LARGE AND 2 OTHER BUILDINGS IS IMMEDIATELY EAST.

NUMEROUS MISSILE CANISTERS AND BOOSTER/WING CRATES ARE IN THE SUPPORT FACILITY AND 4 CARGO-TYPE TRUCKS ARE IN THE SUPPORT AREA.

[REDACTED]

ASWAN SAM SUPPORT FACILITY

EG 2403N 03253E

[REDACTED]

NUMEROUS MISSILE CANISTERS ARE STACKED OUTSIDE THE LARGE DRIVE-THROUGH BUILDING AND 5 CARGO-TYPE TRUCKS ARE IN THE SUPPORT AREA.

NO NEW CONSTRUCTION OR CHANGES IN FACILITIES OBSERVED.

[REDACTED]

ASWAN SAM SITE B15-2

EG 2356N 03259E

SITE CONSISTS OF 6 REVETTED LAUNCH POSITIONS OCCUPIED WITH LAUNCHERS ONLY, A REVETTED GUIDANCE AREA OCCUPIED WITH A BUILDING AND A FAN SONG B/C RADAR, AND 3 UNRETVETTED MISSILE-HOLD BUILDINGS. A LARGE DRIVE-THROUGH BUILDING IS 250 FT NE OF THE LAUNCH AREA. THE ON-SITE SUPPORT AREA IS 750 FT EAST OF THE LAUNCH AREA AND CONSISTS OF 5 LARGE AND 4 OTHER BUILDINGS. THE LAUNCH AREA AND ON-SITE SUPPORT AREA ARE BOTH

TOP SECRET

Approved For Release 2005/11/17 : CIA-RDP03-00140R000100010052-4

[REDACTED]

KH-7 MISSION 4037, 23-30 MAY 67

FENCED.

TANTA SAM SITE C27-2

EG 3045N 03029E

SITE CONSISTS OF 6 REVETTED, UNOCCUPIED LAUNCH POSITIONS, A REVETTED GUIDANCE AREA OCCUPIED WITH 2 STRUCTURES, AND 3 REVETTED MISSILE-HOLD POSITIONS, OCCUPANCY UNDETERMINED DUE TO PROTECTIVE COVERING. TWO OF THE 6 DRIVE-THROUGH BUILDINGS AND 5 OF THE 7 OTHER BUILDINGS HAVE BEEN REMOVED FROM THE ON-SITE SUPPORT AREA.

THE SITE SUPPORT AREA, PREVIOUSLY REPORTED AS 600 FT NE OF THE LAUNCH AREA, IS ACTUALLY LOCATED 600 FT SOUTH OF THE LAUNCH AREA. THE PREVIOUSLY REPORTED DRIVE-IN BUILDINGS ARE NOW DESIGNATED AS DRIVE-THROUGH BUILDINGS.

**Air
Facilities**

K1

Approved For Release

TOP SECRET CIA-RDP03-00140R000100010052-4

KH-7 MISSION 4037, 23-30 MAY 67

AIR FACILITIES

K6

[REDACTED]

K1

[REDACTED]

KIRKUK AIRFIELD MILITARY

IQ 3528N 04421E

OB -- 5 BEAGLE (1 WITH TIP TANKS) AND 1 HOUND.

NO NEW CONSTRUCTION, CHANGES IN FACILITIES, OR PREVIOUSLY UNREPORTED FEATURES OBSERVED.

K1

[REDACTED]

HABBANIYAH AIRFIELD

IQ 3322N 04333E

OB -- 1 HAWKER HUNTER AND 3 HOUND.

NO NEW CONSTRUCTION, CHANGES IN FACILITIES, OR PREVIOUSLY UNREPORTED FEATURES OBSERVED.

K1

[REDACTED]

HABBANIYAH PLATEAU AIRFIELD

IQ 3320N 04335E

OB -- 10 BADGER AND 48 HAWKER HUNTER.

NO NEW CONSTRUCTION, CHANGES IN FACILITIES, OR PREVIOUSLY UNREPORTED FEATURES OBSERVED.

(SEE ATTACHMENT)

K1

[REDACTED]

25X6

Approved For Release 2005/11/17 : CIA-RDP03-00140R000100010052-4

Approved For Release 2005/11/17 : CIA-RDP03-00140R000100010052-4

TOP SECRET

Approved For Release 2005/11/17 : CIA-RDP03-00140R000100010052-4

KH-7 MISSION 4037, 23-30 MAY 67

25X
25X
25X

SAYQAL AIRFIELD

SY 3340N 03712E

OB -- 8 FISHBED.

DEFENSES INCLUDE AN OCCUPIED MEDIUM 6-GUN AAA SITE 6,200 FT WSW OF THE RUNWAY CENTER (RP), AN OCCUPIED MEDIUM 6-GUN AAA SITE 8,600 FT NE OF THE RP, AND AN OCCUPIED LIGHT 6-GUN AAA SITE 1,500 FT SE OF THE RP.

NO OTHER CONSTRUCTION OR CHANGES IN FACILITIES OBSERVED. BOTH RUNWAYS, TAXIWAYS, AND PARKING APRON ARE SERVICEABLE.

(SEE ATTACHMENT)

[REDACTED]

25X

QIZAN AIRFIELD

SR 1656N 04234E

OB -- NONE OBSERVED.

NO NEW CONSTRUCTION, CHANGES IN FACILITIES, OR PREVIOUSLY UNREPORTED FEATURES OBSERVED.

[REDACTED]

KHAMIS MUSHAYT AIRFIELD

SR 1818N 04249E

OB -- 1 HAWKER HUNTER.

NO NEW CONSTRUCTION, CHANGES IN FACILITIES, OR PREVIOUSLY UNREPORTED FEATURES OBSERVED.

[REDACTED]

RAS BANAS AIRFIELD

EG 2358N 03527E

OB -- NONE OBSERVED.

A SMALL CONCRETE ALERT/PARKING APRON IS AT THE SE END OF THE PARALLEL TAXIWAY. A TOTAL OF 11 CONCRETE HARDSTANDS ARE OBSERVED.

[REDACTED]

25X

TOP SECRET

25X

TOP SECRET

Approved For Release 2005/11/17 : CIA-RDP03-00140R000100010052-4

KH-7 MISSION 4037, 23-30 MAY 67

25X
25X
25X

H-3 AIRFIELD

IQ 3256N 03944E

OB -- NONE OBSERVED.

AN AW RADAR SITE 1 NM SW OF THE RUNWAY CENTER CONSISTS OF 1 PROBABLE BAR LOCK RADAR AND 2 VANS.

[REDACTED]

AL HUDAYDAH AIRFIELD NEW

YE 1444N 04259E

OB -- 6 BEAGLE AND 1 COOT.

NO NEW CONSTRUCTION OR CHANGES IN FACILITIES OBSERVED.

[REDACTED]

T-4 AIRFIELD

SY 3432N 03741E

OB -- NONE OBSERVED.

THE FIELD APPEARS SUITABLE FOR EMERGENCY USE ONLY.

[REDACTED]

[REDACTED]

TOP SECRET

Approved For Release 2005/11/17 : CIA-RDP03-00140R000100010052-4

25X
25X

25X6

Approved For Release 2005/11/17 : CIA-RDP03-00140R000100010052-4

Approved For Release 2005/11/17 : CIA-RDP03-00140R000100010052-4

**Naval
Activity/
Ports**

K1

TOP SECRET

25X

25X

KH-7 MISSION 4037, 23-30 MAY 67

NAVAL ACTIVITY/PORTS

25X

AL LADHIQIYAH PORT FACILITIES SY 3530N 03545E

OB -- 2 KOMAR PTG, 2 P-4 PT UNDERWAY AT HIGH SPEED APPROXIMATELY 4.5 NM NW, 2 PROBABLE CH-10 SC, AND 1 T-43 MSF.

VESSELS -- 1 OCEAN FREIGHTER, 1 UNIDENTIFIED MERCHANT SHIP, AND NUMEROUS SMALL CRAFT.

[Redacted]

AL HUDAYDAH PORT FACILITIES YE 1449N 04256E

ON THE EAST SHORE OF THE RED SEA, 3 NM NORTH OF AL HUDAYDAH.

FACILITIES INCLUDE A LARGE MARGINAL WHARF, 2 BOAT QUAYS, 7 TRANSIT SHEDS, 7 SECURED OPEN STORAGE AREAS, AND LARGE UNSECURED OPEN STORAGE AREAS. HANDLING EQUIPMENT CONSISTS OF 3 DOCKSIDE JIB CRANES AND 3 MOBILE CRANES. ONE SECURED AREA CONTAINS 12 REVETTED TENTS. TWO LARGE AND 11 SMALL VERTICAL AND 6 HORIZONTAL POL TANKS ARE OBSERVED. NUMEROUS TENTS ARE SCATTERED THROUGHOUT THE PORT AREA.

OB -- 1 T-43 MSF, 2 P-4 PT, AND 2 PROBABLE POLUCHAT-1 YP.

VESSELS -- 2 OCEAN FREIGHTERS, 2 COASTAL FREIGHTERS, 1 SELF-PROPELLED BARGE, AND SEVERAL SMALL CRAFT.

[Redacted]

K1

K1

K6

[Redacted]

K1

AS SUWAYS PORT FACILITIES EG 2956N 03233E

AT THE SOUTH END OF THE AS SUWAYS QANAT (SUEZ CANAL). RAIL-SERVED MAJOR PORT AND REFINERY COMPLEX CONTAINS A CARGO PORT, A PETROLEUM REFINERY, AND A POL TERMINAL.

25X

TOP SECRET

25X

[Redacted]

TOP SECRET

Approved For Release 2005/11/17 : CIA-RDP03-00140R000100010052-4

KH-7 MISSION 4037, 23-30 MAY 67

THE PORT HAS AN ARTIFICIAL HARBOR FORMED BY 3 MOLES (2 WITH QUAYS ON BOTH SIDES AND ONE WITH A QUAY ON ONE SIDE), 3 BREAKWATERS, ANOTHER QUAY, 1 GRAVING DOCK, 10 STORAGE BUILDINGS, AND SEVERAL ADDITIONAL BUILDINGS.

THE POL REFINERY CONTAINS 1 CRACKING TOWER, A THERMAL POWERPLANT WITH A DISCHARGE BASIN PROTECTED BY 3 BREAKWATERS, SEVERAL ASSOCIATED BUILDINGS, AND 36 LARGE (26 WITH FLOATING TOPS), 19 MEDIUM (3 WITH FLOATING TOPS), AND APPROXIMATELY 50 SMALL STORAGE TANKS.

THE POL TERMINAL CONTAINS A QUAY WITH 2 OFF-SHORE WHARVES AND A FINGER PIER, A BREAKWATER/MOLE WITH 5 OFF-SHORE WHARVES AND 3 BREASTING PLATFORMS, A JETTY, AT LEAST 50 BUILDINGS, AND 36 LARGE (5 WITH FLOATING TOPS), 28 MEDIUM (3 WITH FLOATING TOPS), AND AT LEAST 50 SMALL STORAGE TANKS.

OB -- 1 PROBABLE RIVER PF, 1 PROBABLE BANGOR PF, AND 2 LCM.

VESSELS -- 3 OCEAN TANKERS, 1 COASTAL TANKER, 3 PROBABLE FUEL BARGES, 5 OCEAN FREIGHTERS, 9 COASTAL FREIGHTERS, 1 MERCHANT SHIP, AND NUMEROUS SMALL CRAFT.

[REDACTED]

AL AQABAH PORT FACILITIES

JO 2930N 03500E NO COMOR

ON THE EAST SHORE, AT THE HEAD OF THE GULF OF AQABA. THE PORT CONSISTS OF 3 AREAS -- LIGHTER AREA, CATHAM PIER, AND IMPERIA WHARF. THE LIGHTER AREA (NORTH) CONTAINS AN L-SHAPED MOLE, 2 SMALL BASINS WITH QUAYS, 2 TRANSIT SHEDS, SEVERAL OTHER BUILDINGS, AND OPEN STORAGE. CATHAM PIER (CENTRAL) CONTAINS 1 PIER AND A U-SHAPED WAREHOUSE. IMPERIA WHARF (SOUTH) HAS A LARGE MARGINAL WHARF, 2 QUAYS, 2 LARGE TRANSIT SHEDS, 6 WAREHOUSES, NUMEROUS OTHER BUILDINGS, AND EXTENSIVE OPEN STORAGE. AN ADJACENT OFF-SHORE WHARF HAS A PIPELINE CONNECTING THE WHARF WITH 5 SMALL POL TANKS AND A SEPARATE AREA WITH 12 MEDIUM POL TANKS. A DRY BULK CONVEYOR LEADS FROM THE SAME WHARF TO 2 LARGE STORAGE BUILDINGS AND TO 2 SHEDS.

VESSELS -- 4 OCEAN FREIGHTERS (1 HAS TWO [REDACTED] TRAWLER-TYPE BOATS AS DECK CARGO), 2 COASTAL FREIGHTERS, AND NUMEROUS SMALL CRAFT.

[REDACTED]

TOP SECRET

Approved For Release 2005/11/17 : CIA-RDP03-00140R000100010052-4

25X6

Approved For Release 2005/11/17 : CIA-RDP03-00140R000100010052-4

Approved For Release 2005/11/17 : CIA-RDP03-00140R000100010052-4

TOP SECRET

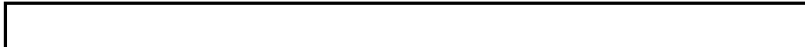
Approved For Release 2005/11/17 : CIA-RDP03-00140R000100010052-4

KH-7 MISSION 4037, 23-30 MAY 67

25X
25X



25X



AS SUWAYS NAVAL BASE AND PORT ADABIYAH EG 2952N 03227E BONUS 1

8 NM SW OF AS SUWAYS.
FACILITIES INCLUDE 1 RAIL-SERVED CARGO MOLE WITH 5 RAIL-MOUNTED CRANES AND 12 BUILDINGS, 1 QUAY, 1 DOG-LEG BREAKWATER, 1 FINGER PIER, 1 ADMINISTRATION BUILDING, 3 ADMINISTRATION BUILDINGS/BARRACKS, 9 SHOP/STORAGE BUILDINGS, AT LEAST 12 UNIDENTIFIED BUILDINGS, 90 TENTS, AND OPEN STORAGE WITHIN A SECURITY FENCE. A SEPARATELY SECURED PROBABLE AMMUNITION STORAGE AREA CONTAINS 11 REVETTED BUILDINGS AND 2 SMALL SUPPORT BUILDINGS. ONE BUILDING AND A PROBABLE UNDERGROUND ENTRANCE (ADIT) ARE UNDER CONSTRUCTION SOUTH OF THIS AMMUNITION STORAGE AREA.

OB -- 2 LCM AND 1 AP/PASSENGER VESSEL.
VESSELS -- 1 COASTAL FREIGHTER AND SEVERAL SMALL CRAFT.



SHARM ASH SHAYKH NAVAL DEPLOYMENT FAC EG 2751N 03417E BONUS 2

AT THE NORTH END OF THE RED SEA, 10 NM SSW OF THE STRAIT OF TIRAN.
NAVAL FACILITIES INCLUDE A SMALL BREASTING PLATFORM AND A SMALL OFF-SHORE WHARF ON A SMALL PENINSULA WHICH FORMS A SEMI-PROTECTED ANCHORAGE, AND APPROXIMATELY 25 BUILDINGS.

OB -- TWO [REDACTED] COMBATANTS WITH PINCHED BOWS, 4 PROBABLE P-4 PT (MOSTLY OBSCURED BY CANVAS), 2 SMALL COMBATANTS, AND 1 SMALL CRAFT.



TOP SECRET

25X
25X

**Biological/
Chemical
Warfare**

25X2

Approved For Release 2005/11/17 : CIA-RDP03-00140R000100010052-4

Next 1 Page(s) In Document Exempt

Approved For Release 2005/11/17 : CIA-RDP03-00140R000100010052-4

**Military
Activity**

KH-7 MISSION 4037, 23-30 MAY 67

25X
25X

MILITARY ACTIVITY

25X

SHARM ASH SHAYKH MILITARY INSTALLATION EG 2751N 03417E

A PROBABLE COASTAL DEFENSE POSITION WITH 1 PERMANENT BUILDING AND PERSONNEL TRENCHES WITH FIRING BAYS IS LOCATED AT 28-00N 034-30E. EIGHTEEN CARGO TRUCKS ARE EITHER ON OR PARKED ALONGSIDE ROUTE 66. IMMEDIATELY WEST OF RAS UMM SID AIRFIELD AT 27-52N 034-18E ARE 12 CARGO TRUCKS PARKED NORTH OF THE ROAD IN A SMALL WASHED-OUT AREA. TWO CRATE AND 1 HOUND ARE OBSERVED AT THE AIRFIELD. FIVE OTHER CARGO TRUCKS ARE PARKED IMMEDIATELY SOUTH OF THE ROAD, AND 0.5 NM WEST OF THIS AREA ARE 5 CARGO TRUCKS PARKED OFF THE ROAD.

A SMALL PORT FACILITY AT 27-51N 034-17E CONTAINS 13 STORAGE/SUPPORT BUILDINGS, 4 ADMINISTRATION/SUPPORT BUILDINGS, 11 CARGO TRUCKS, AND 4 POSSIBLE CARGO TRUCKS.

[REDACTED]

25X

JABAL ABS MILITARY ACTIVITY YE 1604N 04310E

FIVE PERMANENT BUILDINGS PROBABLY ADMINISTRATION BUILDINGS/BARRACKS), 100 TENTS OF VARIOUS SIZES, AND 37 CARGO TRUCKS ARE 0.5 NM SE OF QALAT MARINAF AIRFIELD. ONE DAMAGED CUB AIRCRAFT IS LOCATED IMMEDIATELY OFF THE EAST END OF QALAT MARNAF AIRFIELD.

[REDACTED]

TURBAH SPECIAL MILITARY AREA YE 1245N 04330E

NO SIGNIFICANT CHANGE OBSERVED SINCE

[REDACTED]

[REDACTED]

[REDACTED]

STRAIT OF TIRAN EG 2758N 03425E

NO MINES DISCERNIBLE.

NO INDICATION OF MILITARY ACTIVITY OBSERVED.

[REDACTED]

25X

TOP SECRET

KH-7 MISSION 4037, 23-30 MAY 67

25X
25X
25X

SYRIAN/ISRAELI BORDER SPECIAL AREA 1

SY 3310N 03540E

NO MILITARY ACTIVITY OBSERVED IN CLOUD-FREE AREAS ALONG THE BORDER AREA BETWEEN 33-01N AND 33-20N ON THE ISRAELI SIDE OF THE BORDER. NUMEROUS DEFENSIVE AREAS, VEHICLE REVETMENTS, AND TRENCHES ARE DISCERNIBLE ON THE SYRIAN SIDE OF THE BORDER BETWEEN 33-01N AND 33-20N.

ONE PROBABLE LIGHT 4-GUN FA BATTERY IS EMPLACED ON THE EAST EDGE OF AIN EL HAOUR AT 33-10N 034-48E. NO CONCENTRATION OR ARMOR OBSERVED.

[REDACTED]

[REDACTED]

HABBANIYAH PLATEAU AIRFIELD MILITARY AREA IQ 3321N 04335E BONUS 1

3 NM SE OF HABBANIYAH. ONE-HUNDRED-NINETY TENTS, 32 PROBABLE TANKS/ASSAULT GUNS, 310 CARGO TRUCKS, 10 UTILITY TRUCKS, AND 35 UNIDENTIFIED VEHICLES/PIECES OF EQUIPMENT ARE OBSERVED ADJACENT TO THE HABBANIYAH PLATEAU AIRFIELD [REDACTED]

[REDACTED] MUCH UNIDENTIFIED EQUIPMENT IS OBSERVED THROUGHOUT THE AREA.

[REDACTED]

25X

TOP SECRET

25X
25X

Complexes

X1

Approved For Release

~~TOP SECRET~~

CIA-RDP03-00140R000100010052-4

KH-7 MISSION 4037, 23-30 MAY 67

COMPLEXES

AL BASRAH COMPLEX

IQ 3031N 04749E

ONLY THE WESTERN PORTION OF COMPLEX IS COVERED ON PHOTOGRAPHY. AT AL BASRAH NAVAL BASE, 3 S.O.-1 SC, 10 P-6 PT, 3 THORNY CROFT PR, AND 1 UNIDENTIFIED VESSEL ARE OBSERVED.

NO NEW CONSTRUCTION, CHANGES IN FACILITIES, OR PREVIOUSLY UNREPORTED FEATURES OBSERVED.

[Redacted]

AL AQABAH COMPLEX

JO 2931N 03500E

APPROXIMATELY 90 CARGO VEHICLES ARE OBSERVED IN THE DOCK AREA AND APPROXIMATELY 200 VEHICLES/PIECES OF EQUIPMENT ARE IN AN OPEN STORAGE AREA ADJACENT TO THE DOCK AREA.

NO OTHER MILITARY ACTIVITY IS OBSERVED.

[Redacted]

JORDAN RIVER BASIN WATER DIVERSION PROJ

JO 3230N 03535E

THE WATER DIVERSION PROJECT CANNOT BE IDENTIFIED. NO EVIDENCE OF MILITARY PRESENCE OBSERVED.

[Redacted]

JORDAN RIVER BASIN WATER DIVERSION PROJ

SY 3315N 03541E

NO INDICATION OF WATER DIVERSION PROJECTS OR EVIDENCE OF MILITARY INSTALLATIONS OR ACTIVITY OBSERVED.

[Redacted]

[Large vertical redacted area]

Index

KH-7 MISSION 4037, 23-30 MAY 67

AN ASTERISK (*) IN THE FINAL COLUMN DESIGNATES A TARGET THAT IS IDENTIFICATION ONLY.

COMOR	INSTALLATION NAME	CTY	COORDINATES	OAK
[REDACTED]	JABAL HAMZI SSM COMPLEX	EG	3008N 03036E	1
	AS SUWAYS SAM SITE B22-2	EG	2943N 03220E	1
	AS SUWAYS SAM SUPPORT FACILITY	EG	2959N 03231E	1
	ASWAN SAM SUPPORT FACILITY	EG	2403N 03253E	1
	ASWAN SAM SITE B15-2	EG	2356N 03259E	1
	TANTA SAM SITE C27-2	EG	3045N 03029E	1
	[REDACTED]			
	KIRKUK AIRFIELD MILITARY	IQ	3528N 04421E	1
	HABBANIYAH AIRFIELD	IQ	3322N 04333E	1
	HABBANIYAH PLATEAU AIRFIELD	IQ	3320N 04335E	1
	[REDACTED]			
TIAZ AIRFIELD	SY	3431N 03738E	1	
SAYQAL AIRFIELD	SY	3340N 03712E	1	
QIZAN AIRFIELD	SR	1656N 04234E	1	
KHAMIS MUSHAYT AIRFIELD	SR	1818N 04249E	1	
RAS BANAS AIRFIELD	EG	2358N 03527E	1	
H-3 AIRFIELD	IQ	3256N 03944E	1	
AL HUDAYDAH AIRFIELD NEW	YE	1444N 04259E	1	
T-4 AIRFIELD	SY	3432N 03741E	1	
[REDACTED]				
AL LADHIQIYAH NAVAL BASE AL MINA AL BAYDAH	SY	3536N 03546E	*	
AL LADHIQIYAH PORT FACILITIES	SY	3530N 03545E	1	
AL HUDAYDAH PORT FACILITIES	YE	1449N 04256E	1	
[REDACTED]				
AS SUWAYS PORT FACILITIES	EG	2956N 03233E	1	
AL AQABAH PORT FACILITIES	JO	2930N 03500E	1	
[REDACTED]				
AS SUWAYS NAVAL BASE AND PORT ADABIYAH	EG	2952N 03227E	1	
SHARM ASH SHAYKH NAVAL DEPLOYMENT FAC	EG	2751N 03417E	1	
[REDACTED]				
SHARM ASH SHAYKH MILITARY INSTALLATION	EG	2751N 03417E	1	
JABAL ABS MILITARY ACTIVITY	YE	1604N 04310E	1	
TURBAH SPECIAL MILITARY AREA	YE	1245N 04330E	1	

TOP SECRET

Approved For Release 2005/11/17 : CIA-RDP03-00140R000100010052-4

KH-7 MISSION 4037, 23-30 MAY 67

25X
25X

25X

STRAIT OF TIRAN

EG 2758N 03425E 1

HABBANIYAH PLATEAU AIRFIELD MILITARY AREA	IQ 3321N 04335E 1
AL BASRAH COMPLEX	IQ 3031N 04749E 1
AL AQABAH COMPLEX	JO 2931N 03500E 1
JORDAN RIVER BASIN WATER DIVERSION PROJ	JO 3230N 03535E 1
JORDAN RIVER BASIN WATER DIVERSION PROJ	SY 3315N 03541E 1

TOP SECRET

25X
25X

Attachments

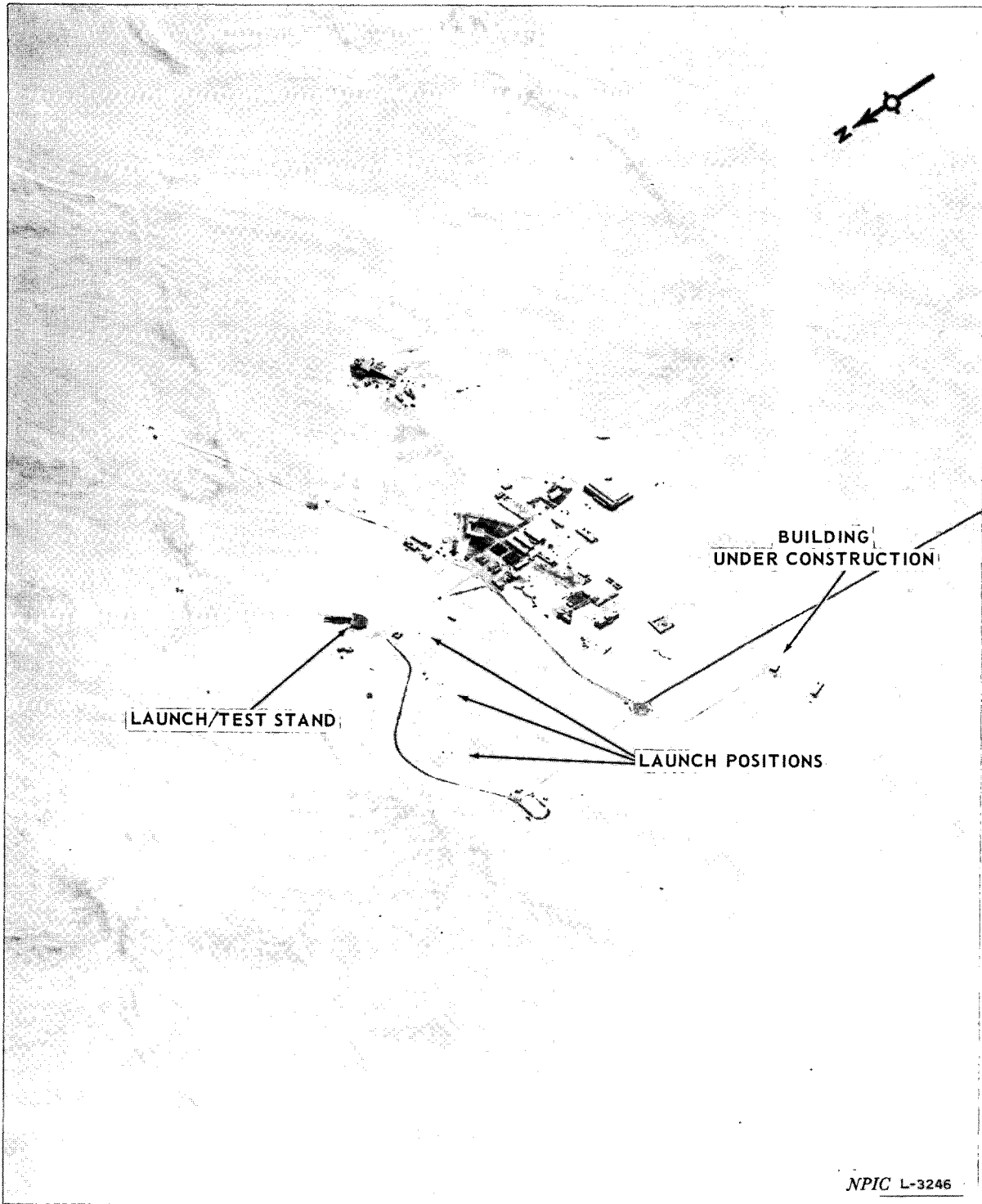
TOP SECRET

KH-7 MISSION 4037, 23-30 MAY 1967

ATTACHMENT 1

X1

25X



NPIC L-3246

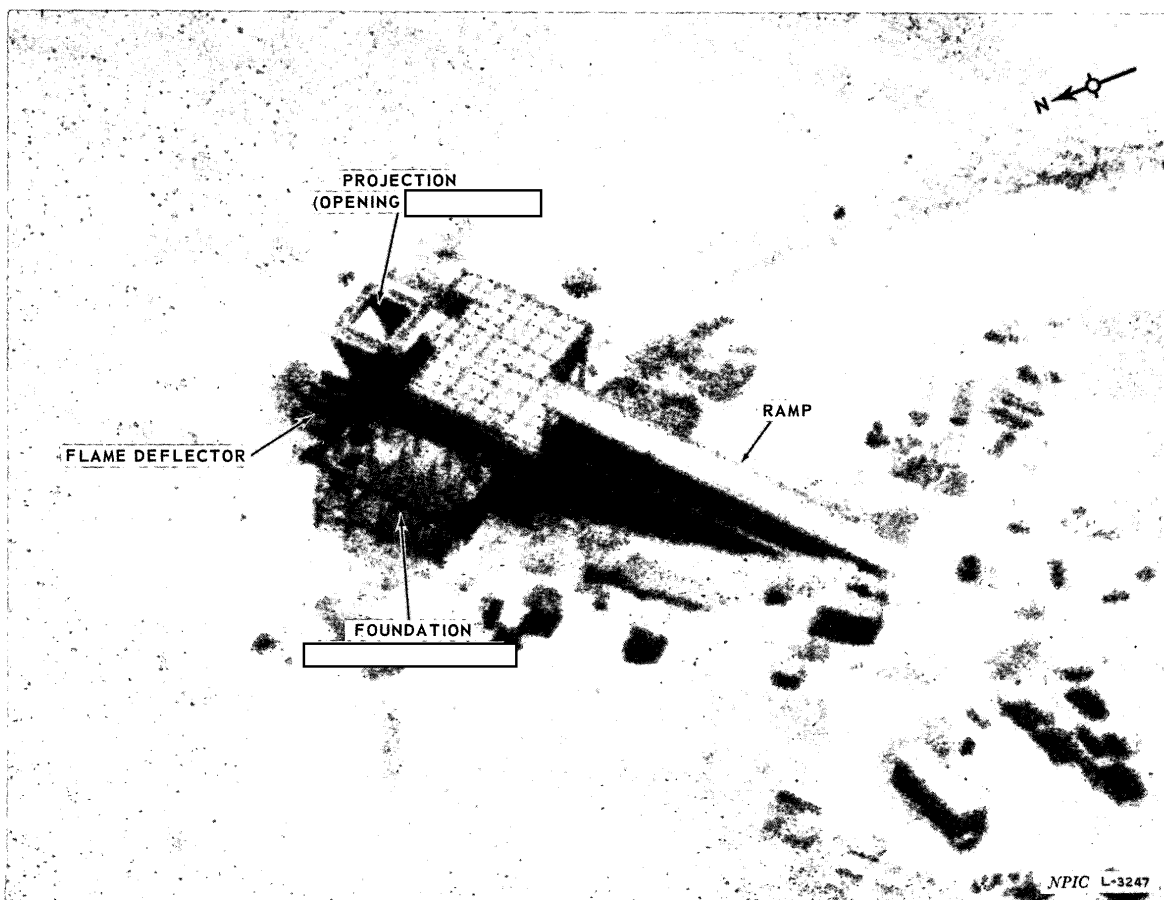
SSM COMPLEX, JABAL HAMZI, EGYPT

25X

TOP SECRET

25X

25X



SSM COMPLEX, JABAL HAMZI, EGYPT

[Redacted]

KH-7 MISSION 4037, 23-30 MAY 1967

ATTACHMENT 2

TOP SECRET

TOP SECRET

[Redacted]

[Redacted]

[Redacted]

[Redacted]

K1
K1
K1
K1

25X
25X
25X
25X

25X6

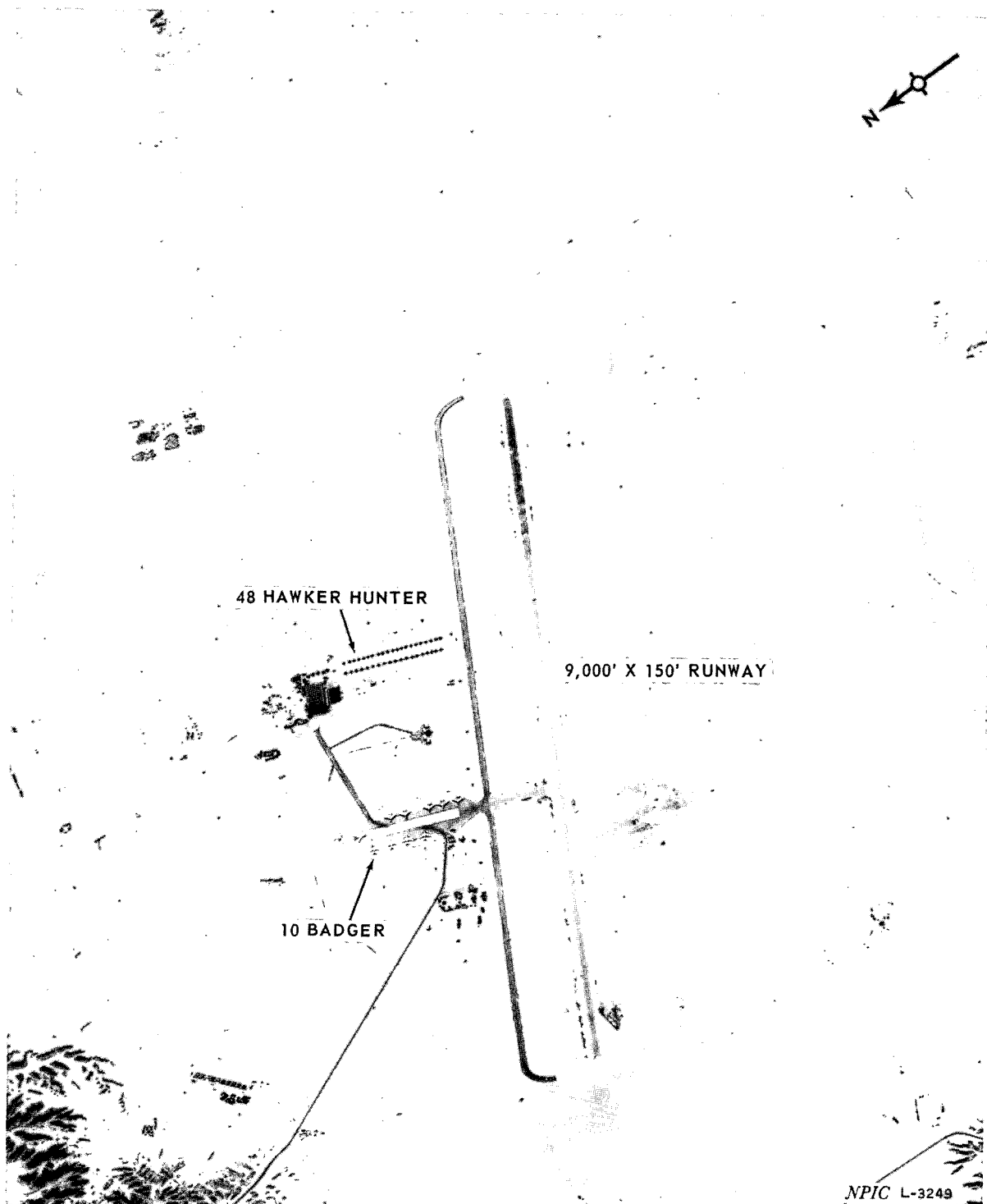
Approved For Release 2005/11/17 : CIA-RDP03-00140R000100010052-4

Approved For Release 2005/11/17 : CIA-RDP03-00140R000100010052-4

TOP SECRET

KH-7 MISSION 4037, 23-30 MAY 1967

ATTACHMENT 4



NPIC L-3249

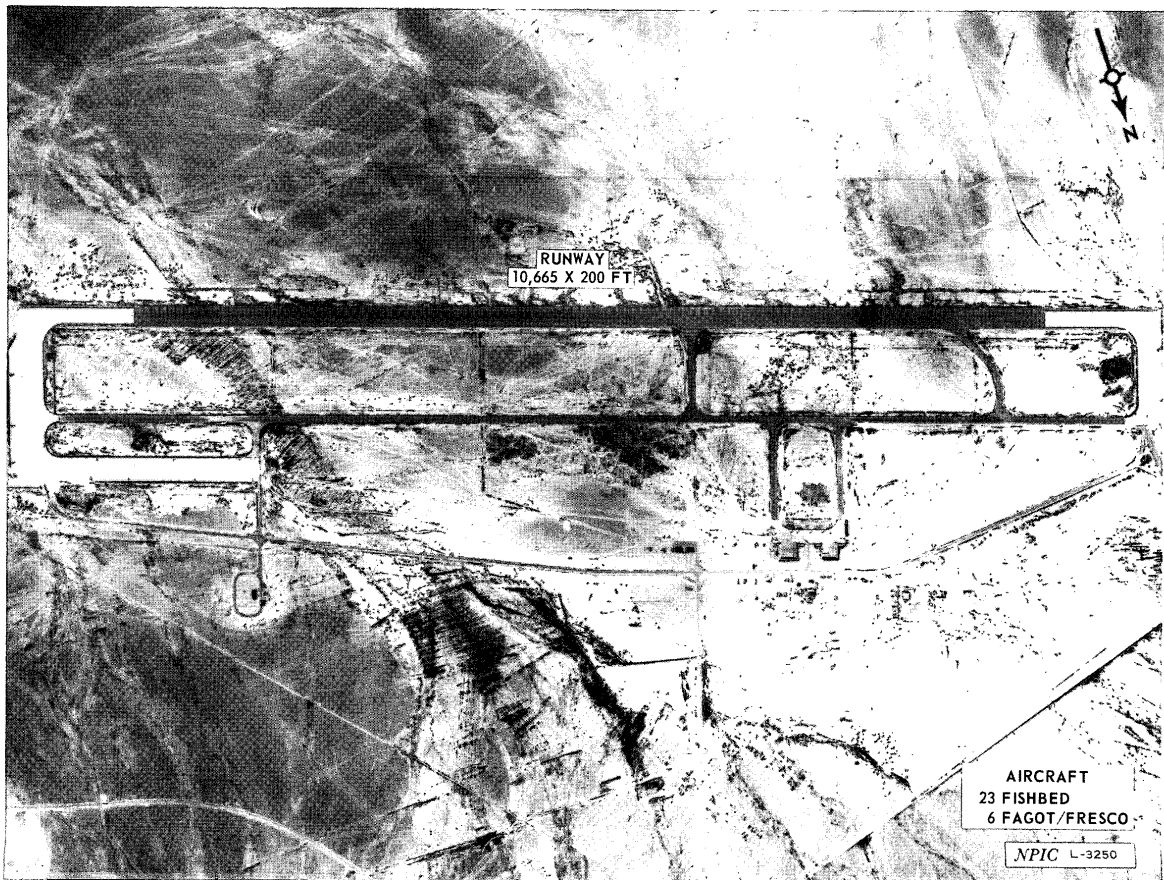
HABBANIYAH PLATEAU AIRFIELD, IRAQ

TOP SECRET

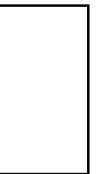
25X6

Approved For Release 2005/11/17 : CIA-RDP03-00140R000100010052-4

Approved For Release 2005/11/17 : CIA-RDP03-00140R000100010052-4



TIAZ AIRFIELD, SYRIA



TOP SECRET

KH-7 MISSION 4037, 23:30 MAY 1967

25X

25X

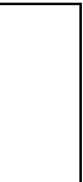
ATTACHMENT 6

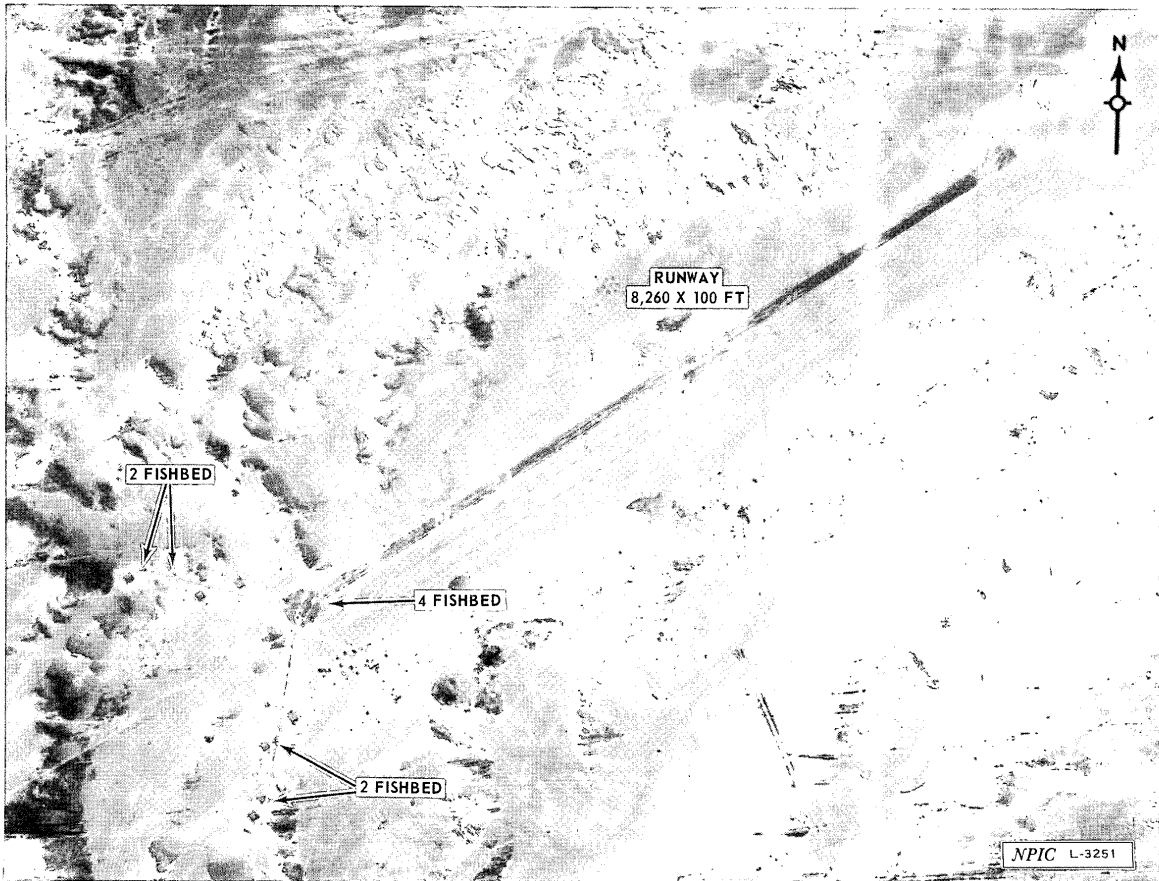
25X

TOP SECRET

X1

X1





SAYQAL AIRFIELD, SYRIA

TOP SECRET

TOP SECRET

KH-7 MISSION 4037, 23-30 MAY 1967

ATTACHMENT 7

25X6

Approved For Release 2005/11/17 : CIA-RDP03-00140R000100010052-4

Next 1 Page(s) In Document Exempt

Approved For Release 2005/11/17 : CIA-RDP03-00140R000100010052-4

COUNTRY CODES

The following is an alphabetic listing of country codes as compiled from the Basic Encyclopedia. Locations of targets in this report are indicated by the country code preceding the coordinates.

AD	Aden	GO	Gotland Is.	PK	Pakistan (West)
AF	Afghanistan	GR	Greece	PO	Poland
AG	Algeria	GV	Guinea	PT	Portugal
AL	Albania	GW	West Germany	PU	Portuguese Guinea
AM	Andaman and Nicobar Is.	HK	Hong Kong	QA	Qatar
AN	Andorra	HU	Hungary	RA	Rwanda
AO	Angola	ID	Indonesia	RI	Rio Muni
AU	Austria	IF	Ilni	RK	Ryukyu Is.
AZ	Azores Is.	IL	Iceland	RM	Mali
BA	Bahrain Is.	IN	India	RS	Socotra Is.
BK	Botswana (Bechuanaland)	IQ	Iraq	RU	Rumania
BE	Belgium	IR	Iran	RY	Zambia
BH	Bornholm Is.	IS	Israel	RZ	Rhodesia
BI	Balearic Is.	IT	Italy	SB	San Marino
BJ	Nanpo Shoto	IV	Ivory Coast	SD	Sardinia
BM	Burma	JA	Japan	SE	Seychelles Is.
BO	Sabah (N. Borneo)	JK	Jammu and Kashmir	SF	French Somaliland
BS	Lesotho (Basutoland)	JO	Jordan	SG	Sarawak
BT	Bhutan	KE	Kenya	SI	Sicily
BU	Bulgaria	KN	North Korea	SJ	Society Is.
BW	Berlin, West	KS	South Korea	SK	Senegal
BX	Brunei	KU	Kuwait	SL	Sierra Leone
BY	Burundi	LA	Laos	SM	Somali Republic
CA	Canary Is.	LC	Laccadive Is.	SP	Spain
CB	Cambodia	LE	Lebanon	SR	Saudi Arabia
CD	Central African Republic	LI	Liberia	SS	Spanish Sahara
CE	Ceylon	LS	Liechtenstein	ST	Sao Tome E Principe
CG	Chad	LX	Luxembourg	SU	Sudan
CH	China	LY	Libya	SV	Svalbard
CL	Caroline Is.	MA	Malagasy Republic	SW	Sweden
CM	Cameroon	MC	Macao	SY	Syria
CP	Congo (Brazzaville)	MD	Madeira Is.	SZ	Switzerland
CR	Crete	MF	Malaysia	TA	Tanzania
CT	Corsica	MG	Mongolia	TC	Trucial States
CV	Cape Verde Is.	ML	Malta	TH	Thailand
CX	Congo (Leopoldville)	MN	Monaco	TI	Tibet
CY	Cyprus	MO	Morocco	TK	Turkey
CZ	Czechoslovakia	MR	Mascarene Is.	TM	Portuguese Timor
DA	Dahomey	MT	Mauritania	TO	Togo
DE	Denmark	MV	Maldive Is.	TU	Tunisia
DO	Dodecanese Is.	MZ	Mozambique	TW	Taiwan
EG	Egypt	NE	Netherlands	UA	Republic of South Africa
EP	Pakistan (East)	NI	Nigeria	UG	Uganda
ET	Ethiopia	NK	Niger	UR	USSR
FI	Finland	NO	Norway	UV	Upper Volta
FO	Faeroe Is.	NP	Nepal	VN	North Vietnam
FR	France	NS	Surinam	VS	South Vietnam
GA	Gambia	NW	New Guinea	VT	Vatican City
GC	Gabon	NY	Malawi	WA	Swaziland
GE	East Germany	NZ	New Zealand	YE	Yemen
GH	Ghana	OM	Muscat Oman	YU	Yugoslavia
GI	Gibraltar	PI	Philippines		

TOP SECRET

TOP SECRET