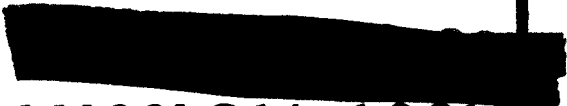


**TOP SECRET**

Approved For Release 2005/11/17 : CIA-RDP03-00140R000100010040-7

PHOTOGRAPHIC INTERPRETATION REPORT



**MISSION 4031**  
**17-24 AUGUST 1966**

**PART IV**



AUGUST 1966  
COPY 194  
90 PAGES

Declassification Review by NGA/DoD



GROUP 1 EXCLUDED FROM  
AUTOMATIC DOWNGRADING  
AND DECLASSIFICATION

**TOP SECRET**

Approved For Release 2005/11/17 : CIA-RDP03-00140R000100010040-7

25X

25X

25X1

Approved For Release 2005/11/17 : CIA-RDP03-00140R000100010040-7

Approved For Release 2005/11/17 : CIA-RDP03-00140R000100010040-7

MISSION 4031 17-24 AUGUST 1966

TABLE OF CONTENTS

PREFACE	2
TRACK OF MISSION	4
HIGHLIGHTS	10
MISSILES	16
AIR FACILITIES	32
NAVAL ACTIVITY/PORTS	33
MILITARY ACTIVITY	34
INDEX OF COMOR TARGETS	70
ATTACHMENTS	APPENDIX

MISSION 4031 17-24 AUGUST 1966

## OAK - PART IV

# MISSION 4031

### PREFACE

THIS IS THE FOURTH AND FINAL OAK REPORT ON MISSION 4031 AND PROVIDES INFORMATION ON THE HIGHEST PRIORITY COMMITTEE ON OVERHEAD RECONNAISSANCE (COMOR) TARGETS OBSERVED ON THE PHOTOGRAPHY. THE REMAINDER OF THE COMOR TARGETS COVERED ON THIS PHOTOGRAPHY WILL BE REPORTED IN A SERIES OF OAK SUPPLEMENTS.

TARGETS ARE ARRANGED IN THE OAK BY SUBJECT AND WITHIN EACH SUBJECT BY COMOR TARGET NUMBER. TARGETS OF OPPORTUNITY OBSERVED DURING THE OAK REPORTING PERIOD ARE LISTED NUMERICALLY UNDER THE APPROPRIATE SUBJECT AFTER THE LISTING OF COMOR TARGETS. LOCATIONS OF TARGETS IN THIS REPORT ARE INDICATED BY THE COUNTRY CODE PRECEDING THE COORDINATES.

SELECTED PHOTOGRAPHIC REFERENCES FOR EACH TARGET OBSERVED AND REPORTED FOLLOW THE DESCRIPTION OF THE TARGET. PASS NUMBERS, SUFFIXED WITH A FOR ASCENDING AND D FOR DESCENDING, ARE LISTED FIRST, FOLLOWED BY FRAMES WHICH ARE INDICATED BY THE FRAME NUMBER WITH AN INDEX NUMBER RUNNING CONSECUTIVELY FROM THE BEGINNING OF EACH PASS -- 4/8 FOR EXAMPLE, MEANS FRAME 4, INDEX 8. UNIVERSAL REFERENCE GRID COORDINATES FOR NEW TARGETS ARE GIVEN IN PARENTHESIS AFTER THE INDEX NUMBER TO WHICH THEY APPLY. THIS GRID IS IDENTIFIED AS UNIVERSAL GRID NO 1, FEB 64. SYMBOLS INDICATING CONDITIONS WHICH AFFECT THE APPEARANCE OF THE TARGET ON THE PHOTOGRAPHY ARE -- C (CLEAR), SC (SCATTERED CLOUD COVER), HC (HEAVY CLOUD COVER), H (HAZE), CS (CLOUD SHADOW), S (SNOW), O (OBLIQUITY), SD (SEMI-DARKNESS), D (DARKNESS), GC (GROUND COVER), CF (CAMOUFLAGE), AND GR (GROUND RESOLUTION). COLOR COVERAGE IS DESIGNATED BY THE LETTER C IMMEDIATELY FOLLOWING FRAME NUMBERS.

INTERPRETABILITY OF THE PHOTOGRAPHY IS CATEGORIZED AS G (GOOD), F (FAIR), OR P (POOR). THE EXTENT OF PHOTOGRAPHIC COVERAGE IS DENOTED BY THE SYMBOLS T (TOTAL) OR PT (PARTIAL). THE MODE OF COVERAGE IS INDICATED BY ST (STEREO), PS (PARTIAL STEREO), OR NS (NON-STEREO).

THE INITIAL SCAN OF THE PHOTOGRAPHY IS ACCOMPLISHED IN A SHORT TIME AND PRIOR TO FINAL REFINEMENT OF EPHEMERIS DATA. CONSEQUENTLY, FUTURE DETAILED ANALYSIS MAY RESULT IN MINOR

K1

[Redacted]

Approved For Release

~~TOP SECRET~~

[Redacted]

CIA-RDP03-00140R000100010040-7

25X

25X

[Redacted]

MISSION 4031 17-24 AUGUST 1966

ALTERATIONS. MOREOVER, RECIPIENTS ARE CAUTIONED THAT THE IDENTIFICATION OF TARGETS IS BASED PRIMARILY ON PHOTOGRAPHY AND DOES NOT CONSTITUTE A FINISHED INTELLIGENCE JUDGMENT.

Approved For Release

~~TOP SECRET~~

[Redacted]

CIA-RDP03-00140R000100010040-7

25X

25X

[Redacted]

25X1

Approved For Release 2005/11/17 : CIA-RDP03-00140R000100010040-7

Next 5 Page(s) In Document Exempt

Approved For Release 2005/11/17 : CIA-RDP03-00140R000100010040-7

## **Highlights**

MISSION 4031 17-24 AUGUST 1966

HIGHLIGHTS

CURRENT COUNT OF ICBM LAUNCHERS (PARENTHESES INDICATE POSSIBLE LAUNCHERS AND ARE INCLUDED IN TOTALS) --

TYPE IIIC	124 (2)
TYPE IIID	<u>349 (31)</u>
SUBTOTAL	473 (33)
OTHER LAUNCHERS	<u>240 (12)</u>
TOTAL	713 (45)

A COMBINATION SHYSTER (SS-4) AND SANDAL (SS-5) MISSILE TRAINING FACILITY HAS BEEN NEWLY IDENTIFIED ON THE NE EDGE OF KOTOVSK BARRACKS NE. AN SS-4 MISSILE IS IN A VERTICAL POSITION ON ONE OF THE 2 COMPLETED PADS. OTHER EQUIPMENT INCLUDING ERECTORS, MISSILE TRANSPORTERS, AND FUELING VEHICLES ARE IN THE IMMEDIATE AREA.

SUMMARY OF MISSILES OR MISSILE COMPONENTS WHICH WERE OBSERVED AT LAUNCH COMPLEX A, SARY-SHAGAN --

- 1 SA-2 MISSILE ON LAUNCHER IN POSITION 1, LAUNCH SITE 1
- 3 SA-2 MISSILES ON TRANSPORTERS AT LAUNCH SITE 1
- 6 SA-1 MISSILES (2 ON TRANSPORTERS AND 4 ON CRADLES) AT LAUNCH SITE 1

AN UNIDENTIFIED MISSILE, APPROXIMATELY [ ] LONG, AT LAUNCH SITE 3

A PARTIALLY ASSEMBLED MISSILE, APPROXIMATELY [ ] LONG, AT LAUNCH SITE 3

THREE [ ] LONG PROBABLE STRAP-ON BOOSTERS AT LAUNCH SITE 3

1 PROBABLE MISSILE, APPROXIMATELY 30 FT LONG, AT POSITION 2, LAUNCH SITE A, PROBABLE LONG RANGE SAM LAUNCH COMPLEX

THE 2 NEW-GENERATION AIRCRAFT REPORTED AT THE AKHTUBINSK/VLADIMIROVKA AIRFIELD IN PART II OF THE OAK CAN NOW BE IDENTIFIED AS BEING PRESENT ON [ ] AND IN APPROXIMATELY THE SAME POSITION. ONE PROBABLE ASM (KENNEL) AND 2 POSSIBLE ASM (KENNEL) ARE LOCATED IN THE MISSILE FABRICATION COMPLEX AT THIS SAME AIRFIELD.

STATUS OF COMOR TARGET READOUT

THIS OAK REPORTS ON 182 COMOR TARGETS.



Approved For Release

TOP SECRET CIA-RDP03-00140R000100010040-7

MISSION 4031 17-24 AUGUST 1966

[Redacted]

TABULAR SUMMARY

A RECAPITULATION OF SIGNIFICANT ACTIVITY OBSERVED ON THIS MISSION AND NPIC CURRENT MISSILE LISTINGS IS PRESENTED IN THE FOLLOWING TABLES ON SUCCEEDING PAGES --

- TABLE 1 -- SOVIET ICBM DEPLOYMENT
- TABLE 2 -- TYURATAM MISSILE TEST CENTER
- TABLE 3 -- SOVIET MRBM AND IRBM DEPLOYMENT
- TABLE 4 -- SAM AND ABM DEPLOYMENT
- TABLE 5 -- DATE/TIME OF PHOTOGRAPHIC PASSES

[Redacted]

25X1

25X1

Approved For Release 2005/11/17 : CIA-RDP03-00140R000100010040-7

MISSION 4031, 17-24 AUGUST 1966

25X1

25X1

TABLE I. SOVIET ICBM DEPLOYMENT

COMPLEX	TYPE I				TYPE II				TYPE III				UNDETERMINED			New Positions	Total Launch Positions							
	A		B		A		B		C		D		Silo	Launchers	Complete									
	Silo	Launchers	Silo	Launchers	Silo	Launchers	Silo	Launchers	Silo	Launchers	Silo	Launchers						Complete						
ALEYSK																		15						
DOMBAROVSKIY														25(18)	6			1	25(18)					
DROVTANAYA					1	2				2	4	3	9			39(18)	15		54(18)					
OLADKAYA										2	4	1	3			31 (28)	3		38 (28)					
IMENI GASTELLO														21	6				21					
ITATKA					2	4				-1	2								6					
KARTALY														22	6			1	22					
KOSTROMA					4	8				2	4	1	3			7(38)		3	22(38)					
KOZELSK								3	6				2	6		22(48)			34(48)					
NOVOSIBIRSK					1	2				2	4	2	6						12					
OLOYANNAYA												3	9			74	13	1	83					
OMSK													1	3					3					
PERM						3	6			2	4	1	3			46 (108)	4		59 (108)					
PLESETSK*	4	4	2	4	1	2	1	2	2	4			1	3			5	12(128)	31(128)					
SHADENSK												3	9						9					
SVOBODNIY						3	6			4	8	1	3			22		5	39					
TATISHCHEVO																96(96)	16		13	96(96)				
TEYKOVO						3	6				3	6							12					
TYUMEN								2	4										4					
UZHUR														25(18)	6				23(18)					
VERKHNYAYA SALDA					2	4	3	6			2	4	2	6					20					
YEDROVO						2	4			4	8	2	6			12 (28)			30 (28)					
YOSHKAR-OLA						3	6				3	6							12					
YUREYA					2	4	3	6			3	6	3	9					25					
ZHANGZ-TOBE															18	6			18					
TOTALS	4	4	2	4	5	10	29	58	7	14	30	60	23	69	3	9	124(28)	33	349(318)	51	5	12(128)	24	713(458)

\* DOES NOT INCLUDE 2 SSN PADS AT LAUNCH SITE 13. NOTE: IF POSSIBLE, THE POSSIBLE SITES ARE INCLUDED IN THE TOTAL COUNT. \* COVERED THIS MISSION. 12. UNIDENTIFIED TYPE POSSIBLE SILOS AT PLESETSK. TOTAL SINGLE SILOS: 473(338)

TOP SECRET

25X1

25X1

TABLE 2. TYURATAM MISSILE TEST CENTER

Launcher Designation																										Totals				
		Soft		Hard																										
Launcher Designation		A1	A2	A3	B1	B2	C1	C2	C3	D1	D2	E1	E2	E3	F	G1	G2	G3	G4	G5	G6	U/C	Comp	U/C	Comp					
Soft	U/C																													
	Comp	1	1	1	1	1	1	1	1				1	1	1		1	1	1	1	1	1					17			
Hard	U/C																													
	Comp									3	3				3														9	
Launcher Designation		H1	H2	I1	I2	I3	I4	I5	I6	J1	J2	K1	K2	K3	L1	L2	L3	L4	L5	L6	L7									
Soft	U/C									1M	1M														2					
	Comp	1	1																							2				
Hard	U/C				1E	1E			1E																		3			
	Comp			1			1	1				1	1	1	1	1	1	1	1	1	1	1	1	1				13		
Launcher Designation		L8	L9	L10	M1	M2	M3	N1	N2	N3																				
Soft	U/C																													
	Comp																													
Hard	U/C				1E	1E	1E																				3			
	Comp	1	1	1				1	1	1																		6		
Launcher Designation																														
New Sites	Soft																													
	Hard																													
																										Total	2	19	6	28
																										Grand Total . . . 55 Launchers				

E - Early stage  
M - Mid-stage  
L - Late stage

○ Covered on this mission by Interpretable Photography

TOP SECRET

13

TOP SECRET

MISSION 4031, 17-24 AUGUST 1966

25X

25X

MISSION 4031, 17-24 AUGUST 1966

Table 3. Soviet MRBM and IRBM Deployment

Geographic Area	Soft MRBM Launch Areas	Soft IRBM Launch Areas	Hard MRBM Launch Areas	Hard IRBM Launch Areas	Total Launch Areas	Total Launch Positions
Western	120	11	18	10	159	624
Caucasus	3		2	3	8	29
Central Asia	2	3	1	3	9	33
Far Eastern	10	1		1	12	47
Totals	135	15	21	17	188	733

Totals do not include 99 fixed field-type sites with total of 370 launch positions and one launch facility at Sovetskaya Gavan

Table 4. SAM and ABM Deployment

	Country																Totals **					
	USSR	Albania	Bulgaria	Czechoslovakia	East Germany	Hungary	Poland	Romania	Yugoslavia	China	Mongolia	North Korea	Indonesia	Egypt	Cuba	India			North Vietnam	Afghanistan		
SAM sites	SA-1	56																	56	Confirmed		
																					Probable	
																					Possible	
		1																			1	Training
		1024*	2	19	24	54	16	30	18	5	18	1	5	5	32	25**	14	121	1	1414	Confirmed	
		2			1	1					1							3			8	Probable
	SA-2	1								1								1		3	Possible	
		31			1					3			1	3	2	1				42	Training **	
		109																		109	Confirmed	
	SA-3																				Probable	
								1												1	Possible	
		13																		13	Training **	
SA-2 SAM Support Facilities		200	1	4	6	4	4	6	2	1			1	1	5	6	3	2		246	Confirmed	
		2		2						1											5	Probable
		1																			1	Possible
SA-3 SAM Assembly Facilities		12																			12	Confirmed
																						Probable
																						Possible
±Long Range SAM		18																			18	Confirmed
		1																			1	Probable
																						Possible
±± ABM Complexes		1																			1	Training
		2																			2	Confirmed
		5																			5	Probable
																						Possible

\*Does not include alternate sites, USSR  
 \*\*Total reflects individual sites

± Complexes are probably long range SAM associated  
 ±± Complexes are probably ABM associated

Table 5. Date/Time of Photographic Passes

Pass	Date	Camera On		Camera Off		Pass	Date	Camera On		Camera Off	
		Hr (Z)	Min (Z)	Hr (Z)	Min (Z)			Hr (Z)	Min (Z)	Hr (Z)	Min (Z)
4	17 Aug	00	25	00	25	69	21 Aug	01	20	01	38
5	17 Aug	01	53	02	12	70	21 Aug	02	54	03	02
6	17 Aug	03	23	03	41	71	21 Aug	04	22	04	31
7	17 Aug	04	56	05	00	72	21 Aug	05	46	05	56
8	17 Aug	06	21	06	31	73	21 Aug	07	15	07	36
9	17 Aug	07	50	08	14	74	21 Aug	08	44	09	10
10	17 Aug	09	23	09	29	75	21 Aug	10	14	10	32
11	17 Aug	10	49	11	07	77	21 Aug	13	32	13	32
12	17 Aug	12	40	12	40	78	21 Aug	14	57	15	05
13	17 Aug	14	06	14	06	79	21 Aug	16	07	16	27
14	17 Aug	15	13	15	39	80	21 Aug	17	36	17	36
16	17 Aug	18	12	18	42	81	21 Aug	19	34	19	34
19	17 Aug	22	48	22	49	84	21 Aug	23	43	23	44
20	18 Aug	00	18	00	44	85	22 Aug	01	12	01	29
21	18 Aug	01	46	01	46	86	22 Aug	02	38	02	57
22	18 Aug	03	21	03	33	87	22 Aug	04	07	04	19
23	18 Aug	04	49	05	01	88	22 Aug	05	36	05	48
24	18 Aug	06	19	06	24	89	22 Aug	07	04	07	23
25	18 Aug	07	42	08	06	90	22 Aug	08	33	08	58
26	18 Aug	09	17	09	33	91	22 Aug	10	08	10	19
27	18 Aug	10	42	11	00	95	22 Aug	15	55	16	15
30	18 Aug	15	25	15	25	97	22 Aug	19	23	19	23
33	18 Aug	20	02	20	02	100	22 Aug	23	31	23	31
35	18 Aug	22	41	22	42						
37	19 Aug	01	38	01	59	101	23 Aug	00	57	01	16
38	19 Aug	03	16	03	27	102	23 Aug	02	26	02	45
39	19 Aug	04	36	04	51	103	23 Aug	03	55	04	06
40	19 Aug	06	12	06	16	104	23 Aug	05	29	05	35
41	19 Aug	07	34	07	59	105	23 Aug	06	57	07	04
42	19 Aug	09	04	09	25	106	23 Aug	08	21	08	49
43	19 Aug	10	34	10	52	107	23 Aug	09	59	10	08
45	19 Aug	13	51	13	51	108	23 Aug	11	31	11	31
46	19 Aug	14	57	15	21	109	23 Aug	13	09	13	14
47	19 Aug	16	27	16	27	110	23 Aug	14	34	14	45
49	19 Aug	19	54	19	54	111	23 Aug	15	43	16	02
						112	23 Aug	17	12	17	12
52	20 Aug	00	05	00	22	115	23 Aug	22	07	22	07
53	20 Aug	01	35	01	48	116	23 Aug	23	15	23	16
54	20 Aug	03	04	03	17						
55	20 Aug	04	31	04	42	117	24 Aug	00	44	00	51
56	20 Aug	05	56	06	07	118	24 Aug	02	13	02	32
57	20 Aug	07	25	07	50	119	24 Aug	03	41	03	52
58	20 Aug	08	54	09	16	120	24 Aug	05	12	05	21
59	20 Aug	10	25	10	43	121	24 Aug	06	39	06	51
61	20 Aug	13	41	13	52	122	24 Aug	08	07	08	35
62	20 Aug	14	48	15	10	123	24 Aug	09	42	09	54
63	20 Aug	16	17	16	18	124	24 Aug	11	10	11	22
64	20 Aug	17	47	17	47						
68	20 Aug	23	54	00	18						

TOP SECRET

TOP SECRET

MISSION 4031, 17-24 AUGUST 1966

**Missiles**

K1

Approved For Release

TOP SECRET CIA-RDP03-00140R000100010040-7

MISSION 4031 17-24 AUGUST 1966

[Redacted]

25X

25X

MISSILES

25X

PLESETSK ICBM COMPLEX

UR 6254N 04038E

[Redacted]

A NEWLY IDENTIFIED AREA OF CONSTRUCTION ACTIVITY IS CONFIRMED WITHIN A CLEARING LOCATED AT 62-57N 041-38E APPROXIMATELY 3 NM EAST OF PROBABLE SITES 12 AND 14. ROAD IMPROVEMENT LEADING TOWARD THIS CLEARING HAS TAKEN PLACE SINCE [Redacted] TWO CIRCULAR IMAGES, POSSIBLY EXCAVATIONS OR SILO CORINGS, ARE WITHIN THE CLEARING BUT LACK OF STEREO PHOTOGRAPHY PRECLUDES DETAILED INTERPRETATION. THIS NEW ACTIVITY BRINGS THE COUNT OF AREAS OF UNIDENTIFIED CONSTRUCTION ACTIVITIES IN THE GENERAL AREA TO 4.

K1

[Redacted]

25X

PLESETSK ICBM PROB LAUNCH SITE 11

UR 6257N 04126E

[Redacted]

CONSTRUCTION CONTINUES WITHIN THE SITE. PORTIONS OF THE ACCESS ROAD AND THE PARALLEL LEVEL EARTH MOUNDS HAVE NOT BEEN PAVED. APRONS OR PADS ARE NOW BEING PAVED AT THE EASTERN END OF THE EARTH MOUNDS IN THE VICINITY OF THE POSSIBLE SILOS. A CRANE IS ON THE RIGHT MOUND AND A PROBABLE LATTICE TOWER IS JUST OFF THE TERMINUS OF THE RIGHT MOUND. LACK OF STEREO AND UNIDENTIFIED CLUTTER IN THE VICINITY OF THE POSSIBLE LAUNCH POINTS PRECLUDES DETAILED INTERPRETATION. A PROBABLE CONDUIT OR PIPELINE IS UNDER CONSTRUCTION PARALLELING THE ACCESS ROAD.

(SEE ATTACHMENT)

K1

[Redacted]

25X

PLESETSK ICBM PROB LAUNCH SITE 12

UR 6258N 04132E

[Redacted]

IDENTIFICATION ONLY.

K1

[Redacted]

25X

PLESETSK ICBM PROB LAUNCH SITE 14

UR 6258N 04133E

[Redacted]

IDENTIFICATION ONLY.

K1

[Redacted]

[Redacted]

[Redacted]

25X

25X

25X  
25X  
25X

MISSION 4031 17-24 AUGUST 1966

PLESETSK ICBM PROB LAUNCH SITE 15

UR 6258N 04124E

TWO OF THE 3 AREAS OF CONSTRUCTION ACTIVITY WITHIN THE SITE ARE COVERED. A THIRD AREA OF CONSTRUCTION IS CLOUD COVERED. THE INITIAL GRADING FOR THE LOOP ROAD SYSTEM AT THE PREVIOUSLY REPORTED WESTERNMOST CRUCIFORM IS NEARLY COMPLETE. THE CRUCIFORM DITCHING CONTAINING THE PROBABLE CONDUIT HAS BEEN BACKFILLED. NUMEROUS VEHICLES ARE LOCATED ALONG THE LOOP ROAD IN A CONSTRUCTION AREA THAT MAY BE USED FOR A POSSIBLE SILO APRON OR PAD. INITIAL GRADING FOR THE LOOP ROAD ENCLOSING THE EASTERNMOST CRUCIFORM CONFIGURATION IS NEARLY COMPLETE. THE CRUCIFORM DITCHING CONTAINS PROBABLE CONDUIT AND THE POSSIBLE SILOS OR SILO CASINGS ARE EVIDENT THROUGH THE HAZE. THE BUILDINGS, PROBABLE CONTROL BUNKERS, TO THE REAR OF BOTH CRUCIFORM CONFIGURATIONS ARE SEPARATED BY A DISTANCE OF ABOUT 840 FT AND ARE IDENTICAL WITH THE ONE PREVIOUSLY IDENTIFIED AT PROBABLE SITE 16. THE 2 BUILDINGS ALONG THE ACCESS ROAD APPEAR COMPLETE AND MEASURE APPROXIMATELY 160 X 45 FT.

(SEE ATTACHMENT)



25X

IMENI GASTELLO ICBM COMPLEX

UR 5106N 06618E

NO NEW MISSILE FACILITIES OBSERVED WITHIN THE CLOUD-FREE PORTIONS OF THE SEARCH AREA.



25X

IMENI GASTELLO ICBM LAUNCH SITE 1

UR 5103N 06605E

THE ARCH-ROOFED BUILDING BETWEEN THE SECURITY FENCES AT THE SITE ACCESS ROAD IS NOW EARTH MOUNDED. THE WATER TREATMENT BASIN IS VISIBLE. A PROBABLE HARDSTAND/PAD IS UNDER CONSTRUCTION JUST OFF THE SITE ACCESS ROAD. THREE SQUARE CONCRETE OBJECTS, EACH WITH A DARK CIRCULAR CENTER, ARE EVIDENT TO THE NORTH, NW, AND WEST OF THE LOOP ROAD CONFIGURATION. THESE OBJECTS ARE 25 X 25 FT AND ARE SECURED. TWIN PAIRS OF MUCH SMALLER OBJECTS ARE JUST INSIDE AND OUTSIDE THE LOOP ROAD. AN IMAGINARY LINE PROJECTED BETWEEN THESE PAIRS CROSSES.

25X  
25X



MISSION 4031 17-24 AUGUST 1966

THE SILO STRUCTURE. THE OBJECTS ARE SMALL BRIGHT SQUARES WITH A DARK CIRCULAR CENTER. ONE VEHICLE/PIECE OF EQUIPMENT IS APPARENT ON THE LOOP ROAD.



IMENI GASTELLO ICBM LAUNCH SITE 2

UR 5106N 06601E

THE ARCH-ROOFED BUILDING BETWEEN THE SECURITY FENCES AT THE SITE ACCESS ROAD IS NOW EARTH MOUNDED. ATOP THE MOUND ARE 4 WHITE DOTS AND 1 DARK DOT. THE WATER TREATMENT BASIN IS VISIBLE. A POSSIBLE HARDSTAND/PAD IS LOCATED JUST OFF THE SITE ACCESS ROAD. THREE COMPLETED SQUARE OBJECTS, EACH WITH A DARK CIRCULAR CENTER, ARE EVIDENT TO THE NW, NE, AND SW OF THE LOOP ROAD CONFIGURATION. A SIMILAR OBJECT IS UNDER CONSTRUCTION SE OF THE LOOP ROAD. THE TWIN PAIRS OF SMALL OBJECTS ARE EVIDENT BOTH JUST INSIDE AND OUTSIDE THE LOOP ROAD. A PROBABLE CORING IS VISIBLE WITHIN THE SITE SUPPORT FACILITY. THREE UTILITY VEHICLES AND 3 LARGE VEHICLES ARE OBSERVED ON THE LOOP ROAD ON PASS [REDACTED] ONE IS 45 FT LONG, A SECOND IS [REDACTED] IN LENGTH AND [REDACTED] IN WIDTH AND THE THIRD IS A TANK-TRUCK OR SHIPPING CANISTER ON A FLATBED TRUCK. THE LARGER REAR SEGMENT IS [REDACTED] AND THE FORWARD CONNECTED SEGMENT IS [REDACTED] TWO UNIDENTIFIED VEHICLES ON LOOP ROAD AND 2 ON SITE ACCESS ROAD ARE OBSERVED ON PASS [REDACTED]



IMENI GASTELLO ICBM LAUNCH SITE 3

UR 5110N 06605E

[REDACTED] -- A [REDACTED] TANK-TYPE TRUCK IS ON THE LOOP ROAD. A LONG LINEAR VEHICLE, [REDACTED] IS ALSO ON THE LOOP ROAD AND APPEARS TO HAVE A PROBABLE TRACTOR UNIT ATTACHED.

[REDACTED] -- THE ARCH-ROOFED BUILDING BETWEEN THE SECURITY FENCES AT THE SITE ACCESS ROAD IS NOW EARTH MOUNDED. THE WATER TREATMENT BASIN IS VISIBLE. A PROBABLE HARDSTAND/PAD IS UNDER CONSTRUCTION JUST OFF THE SITE ACCESS ROAD. THREE SQUARE, CONCRETE OBJECTS ARE NW, WEST, AND SW OF THE LOOP ROAD CONFIGURATION. THE TWIN PAIRS OF SMALL OBJECTS ARE VISIBLE JUST INSIDE AND

K1

Approved For Release 2005/08/01 : CIA-RDP03-00140R000100010040-7  
TOP SECRET CROSS RUFF  
MISSION 4031 17-24 AUGUST 1966

OUTSIDE OF THE LOOP ROAD. A PROBABLE CORING IS VISIBLE WITHIN THE SITE SUPPORT FACILITY. NO VEHICLES OR EQUIPMENT VISIBLE.

K1

[Redacted]

IMENI GASTELLO ICBM LAUNCH SITE 5 UR 5113N 06611E [Redacted]

THE ARCH-ROOFED BUILDING BETWEEN THE SECURITY FENCES AT THE SITE ACCESS ROAD IS NOW EARTH MOUNDED. DIRECTLY ACROSS THE ACCESS ROAD FROM THE MOUNDED STRUCTURE IS AN ADDITIONAL SMALLER MOUND. THE 2 MOUNDS ARE JOINED BY A CONCRETE WALKWAY. A POSSIBLE HARDSTAND/PAD IS UNDER CONSTRUCTION OFF THE ACCESS ROAD JUST SOUTH OF THE LAUNCH SITE SECURITY FENCE. THREE SQUARE CONCRETE OBJECTS ARE LOCATED NE, NORTH, AND WEST OF THE LOOP ROAD CONFIGURATION. THE 2 PAIRS OF SMALL OBJECTS ARE VISIBLE JUST INSIDE AND OUTSIDE OF THE LOOP ROAD. THE WATER TREATMENT BASIN IS VISIBLE. A VEHICLE IS ON THE LOOP ROAD. TWO ADDITIONAL VEHICLES ARE ON THE SITE ACCESS ROAD, AND 4 ADDITIONAL VEHICLES ARE WITHIN THE SITE SUPPORT FACILITY.

K1

[Redacted]

IMENI GASTELLO ICBM LAUNCH SITE 6 UR 5113N 06605E [Redacted]

[Redacted] - 2 VEHICLES/PIECES OF EQUIPMENT ARE LOCATED WITHIN THE SITE SUPPORT FACILITY. AN ADDITIONAL VEHICLE IS ON THE LOOP ROAD, AND 2 MORE ARE AT THE POSSIBLE HARDSTAND/PAD.

K1

[Redacted] - THE ARCH-ROOFED BUILDING BETWEEN THE SECURITY FENCES AT THE SITE ACCESS ROAD IS NOW EARTH MOUNDED. THE WATER TREATMENT BASIN IS NOW VISIBLE. A PROBABLE HARDSTAND/PAD IS UNDER CONSTRUCTION JUST OFF THE SITE ACCESS ROAD. FOUR DARK OBJECTS ARE AT THE CENTER OF THIS CONSTRUCTION AREA. THREE SQUARE OBJECTS ARE LOCATED NORTH, WEST AND SW OF THE LOOP ROAD CONFIGURATION. THE TWIN PAIRS OF SMALL OBJECTS ARE VISIBLE JUST INSIDE AND OUTSIDE THE LOOP ROAD. A POSSIBLE CORING IS VISIBLE WITHIN THE SITE SUPPORT FACILITY. NO VEHICLES OR EQUIPMENT VISIBLE.

K1

[Redacted]

MISSION 4031 17-24 AUGUST 1966

IMENI GASTELLO ICBM LAUNCH SITE 7

UR 5057N 06608E

THIS SITE WAS REPORTED COMPLETE ON [REDACTED] IT IS NOW DETERMINED TO BE IN A LATE STAGE OF CONSTRUCTION.

[REDACTED] -- A DOZER IS EARTH MOUNDING 1 OF THE LONG BUILDINGS IMMEDIATELY WEST OF THE LAUNCH SITE SECURITY FENCING. A CRANE AND 3 VEHICLES/PIECES OF EQUIPMENT ARE AT THE LAUNCH SITE. FOUR BRIGHT OBJECTS ARE AT THE ELECTRONIC FACILITY CONTROL BUILDINGS, AT THE APEX OF THE L-SHAPED LEGS.

[REDACTED] -- THE ARCH-ROOFED BUILDING BETWEEN THE SECURITY FENCES AT THE SITE ACCESS ROAD IS NOW EARTH MOUNDED. THE EARTH MOUNDING IS COMPLETE ON THE 2 LARGE BUILDINGS WEST OF THE SECURITY FENCING. THE SMALLER BUILDING AT THE SAME AREA IS BEING EARTH MOUNDED. TWO SQUARE, SECURED OBJECTS ARE LOCATED SW AND NW OF THE LOOP ROAD CONFIGURATION. TWO ADDITIONAL SIMILAR OBJECTS ARE UNDER CONSTRUCTION NORTH AND NE OF THE LOOP ROAD. THE SILO DOOR IS IN PLACE AND IN AN OPEN POSITION. TWELVE HORIZONTAL BLIMP TANKS (1 UNDER UNDER CONSTRUCTION), ARE IN THE EXCAVATION ADJACENT TO THE ELECTRONICS FACILITY CONTROL BUILDING. TWO SMALL RECTANGULAR TANKS/STRUCTURES ARE ADJACENT TO THE TANKS. TWENTY-NINE VEHICLES/PIECES OF EQUIPMENT AND TWO CRANES ARE IN THE CONSTRUCTION AREA. AN UNUSUAL RECTANGULAR BUILDING APPEARS TO SPAN AN OPEN Y-SHAPED DITCH. THIS STRUCTURE IS LOCATED BETWEEN THE LAUNCH SITE AND THE SITE SUPPORT FACILITY. A CONDUIT OR CONVEYOR EXTENDS INTO THE OPEN DITCH FROM THE ROOF OF THE BUILDING.

[REDACTED] -- PORTIONS OF 3 BUILDINGS ARE VISIBLE IN THE SITE SUPPORT FACILITY. THE BORROW PIT HAS 2 TRUCKS IN THE EXCAVATION.



IMENI GASTELLO ICBM LAUNCH SITE 8

UR 5057N 06559E

THE SITE REMAINS IN A LATE STAGE OF CONSTRUCTION.

[REDACTED] -- A LARGE LINEAR SHADOW IS VISIBLE FALLING ACROSS THE SILO STRUCTURE AREA, PROBABLY FROM THE BOOM OF A LARGE CRANE. THREE VEHICLES ARE VISIBLE WITHIN THE

TOP SECRET

MISSION 4031 17-24 AUGUST 1966

CONFINES OF THE LOOP ROAD.

-- CONSTRUCTION ACTIVITY IS VISIBLE BETWEEN THE SECURITY FENCES AT THE SITE ACCESS ROAD. TWO SQUARE OBJECTS ARE WEST AND SW OF THE LOOP ROAD CONFIGURATION. A POSSIBLE CONCRETE OBJECT IS UNDER CONSTRUCTION SOUTH OF THE LOOP ROAD. THE LARGE BOOM SHADOW IS VISIBLE. THREE VEHICLES ARE VISIBLE WITHIN THE CONFINES OF THE LOOP ROAD.



IMENI GASTELLO ICBM LAUNCH SITE 9

UR 5057N 06616E

IDENTIFICATION ONLY.



IMENI GASTELLO ICBM LAUNCH SITE 11

UR 5052N 06600E

SITE REMAINS IN A MID-STAGE OF CONSTRUCTION.

-- THE SILO LINER IS PARTIALLY INSERTED INTO THE HEADWORKS OF THE SILO STRUCTURE. THE INSIDE AND OUTSIDE DIAMETER ARE TWO VEHICLES AND A CRANE ARE AT THE LAUNCH SITE, A POWER SHOVEL IS AT THE BORROW PIT, AND 6 UTILITY VEHICLES AND 3 DUMP TRUCKS ARE AT THE SITE SUPPORT FACILITY.

-- THE ARCH-ROOFED BUILDING BETWEEN THE SECURITY FENCES AT THE ACCESS ROAD IS NOW EARTH MOUNDED. TWO SQUARE STRUCTURES ARE WEST AND SW OF THE LOOP ROAD CONFIGURATION. AN ADDITIONAL SIMILAR STRUCTURE IS UNDER CONSTRUCTION NE OF THE LOOP ROAD. A SMALL SECURED COMPOUND CONTAINING A SMALL PROBABLE STRUCTURE IS IMMEDIATELY OUTSIDE THE SECURITY FENCE SW OF THE SILO STRUCTURE. EIGHT UTILITY VEHICLES AND A CRANE ARE IN THE VICINITY OF THE LOOP ROAD.



TOP SECRET

K1

Approved For Release

TOP SECRET

TOP SECRET

CIA-RDP03-00140R

000100010040-7

MISSION 4031 17-24 AUGUST 1966

[Redacted]

25X

25X

25X

IMENI GASTELLO ICBM LAUNCH SITE 12

UR 5051N 06609E

[Redacted]

THE SITE REMAINS IN A MID-STAGE OF CONSTRUCTION. A VEHICLE/PIECE OF EQUIPMENT IS ON THE LOOP ROAD.

NO NEW CONSTRUCTION, CHANGES IN FACILITIES, OR PREVIOUSLY UNREPORTED FEATURES OBSERVED.

[Redacted]

K1

25X

IMENI GASTELLO ICBM LAUNCH SITE 13

UR 5056N 06550E

[Redacted]

THE SITE REMAINS IN A MID-STAGE OF CONSTRUCTION.

A SQUARE, SECURED OBJECT UNDER CONSTRUCTION IS NE OF THE LOOP ROAD CONFIGURATION. A CONSTRUCTION RAMP CONNECTS THE SOUTH WALL OF THE SILO STRUCTURE WITH THE ADJACENT WALL OF THE EXCAVATION. THE LONG CYLINDER IS IN PLACE ON THE EARTHEN RECTANGLE. A CRANE AND 5 UTILITY TRUCKS ARE IN THE LAUNCH SITE AREA. THE PROBABLE STEEL FORMS FOR THE SILO DOOR CONSTRUCTION ARE LOOSELY IN PLACE ON THE EARTHEN SQUARE.

[Redacted]

K1

25X

IMENI GASTELLO ICBM LAUNCH SITE 16

UR 5102N 06550E

[Redacted]

IDENTIFICATION ONLY.

[Redacted]

K1

GUSEV MRBM LAUNCH SITE 1

UR 5441N 02205E

THREE POSSIBLE MISSILES ON TRANSPORTERS, 1 EMPTY MISSILE TRANSPORTER, AND APPROXIMATELY 25 VEHICLES/PIECES OF EQUIPMENT OBSERVED. AT LEAST 6 BUILDINGS IN THE SITE SUPPORT FACILITY HAVE DISRUPTIVE PAINTING ON THEIR ROOFS. NO NEW CONSTRUCTION OBSERVED.

[Redacted]

K1

[Redacted]

K1

[Redacted]

25X  
25X  
25X

K1

[Redacted]

Approved For Release 2005/05/04 : CIA-RDP03-00140R000100010040-7

~~TOP SECRET~~

[Redacted]

MISSION 4031 17-24 AUGUST 1966

[Redacted]

NEMAN MRBM LAUNCH SITE

UR 5501N 02211E

[Redacted]

K1

[Redacted] - 3 PROBABLE MISSILES ON TRANSPORTERS NEAR SOUTH READY BUILDING, 8 OXIDIZER TRAILERS AND PRIME MOVERS IN OXIDIZER AREA, AND 2 FUEL TRAILERS IN FUEL AREA. FIFTEEN VEHICLES, INCLUDING 1 CHERRY PICKER, ARE IN MOTOR POOL. A NEW BARRACKS HAS BEEN BUILT ACROSS THE ROAD FROM THE SITE SUPPORT FACILITY, AND A SECOND BUILDING IS UNDER CONSTRUCTION IN THIS AREA. POST HOLES FOR A NEW FENCE LINE ARE VISIBLE WEST OF THE SITE. TWO LAUNCH POSITIONS ARE NOT VISIBLE.

K1

[Redacted] - ALL 4 LAUNCH PADS ARE UNOCCUPIED. NUMEROUS SMALL VEHICLES/PIECES OF EQUIPMENT ARE OBSERVED AT THE SITE. NO NEW CONSTRUCTION OR CHANGES IN THE FACILITIES ARE OBSERVED. A HARDENED CONTROL BUNKER AND A HARDENED, SUBSURFACE COMMUNICATIONS ANTENNA ARE IMMEDIATELY NORTH OF THE SITE.

[Redacted]

K1

[Redacted]

K1

[Redacted]

K1

[Redacted]

25X  
25X

PAPLAKA MRBM LAUNCH SITE 1

UR 5624N 02115E

[Redacted]

A DISRUPTIVE PATTERN HAS BEEN APPLIED TO THE ROOFS OF 3 BUILDINGS IN THE [Redacted] AND 1 BUILDING IN THE SITE ADMINISTRATION AREA. ONLY HALF OF THE NORTHERNMOST PAD IS VISIBLE AND A GREY OR NEUTRAL SURFACING IS BEING APPLIED TO THE SOUTHERNMOST PAD. A NUMBER OF FUEL/OXIDIZER TRAILERS ARE PARKED IN THE NE SECTION OF THE LAUNCH AREA. A GANTRY CRANE AND A LARGE COVERED VEHICLE IS VISIBLE AT THE OPENING OF A LARGE BUILDING IN THE SUPPORT AREA. NO MISSILES OR MISSILE-RELATED EQUIPMENT ARE VISIBLE ON THE PADS.

X1

[Redacted]

X1

[Redacted]

25X  
25X  
25X

~~TOP SECRET~~

[Redacted]

[Redacted]

K1

Approved

TOP SECRET

For Release 2005/11/11 CIA-RDP03-00140R000100010040-7

[Redacted]

MISSION 4031 17-24 AUGUST 1966

25X  
25X  
25X

PAPLAKA MRBM LAUNCH SITE 2

UR 5625N 02115E

[Redacted]

A DISRUPTIVE PATTERN HAS BEEN APPLIED TO THE ROOFS OF 3 BUILDINGS IN THE ADMINISTRATIVE SUPPORT AREA. ELEVEN FUEL/OXIDIZER TRAILERS ARE PARKED IN 2 REVETTED AREAS EAST OF THE 2 NORTHERNMOST LAUNCH PADS. TWO UNIDENTIFIED VEHICLES ARE VISIBLE IN A CLEARING EAST OF THE FUEL STORAGE TRAILERS. ON THE SECOND SOUTHERNMOST PAD, A RECTANGULAR, UNIDENTIFIED OBJECT IS VISIBLE. NO MISSILES OR MISSILE-RELATED EQUIPMENT IS OBSERVED ON THE PADS.

[Redacted]

[Redacted]

K1

K1

25X

SARY-SHAGAN LAUNCH COMPLEX A (ZONE A)

UR 4625N 07252E

[Redacted]

THE FOLLOWING DESCRIPTION IS BASED ON PASS [Redacted] UNLESS OTHERWISE SPECIFIED.

25X

HEADQUARTERS AND ADMINISTRATION AREA -- NO SIGNIFICANT CHANGE IN FACILITIES SINCE [Redacted] APPROXIMATELY 20 VEHICLES ARE PARKED IN THE AREA.

25X

LAUNCH SITE 1 -- NO CHANGE IN FACILITIES SINCE [Redacted] [Redacted] A GUIDELINE MISSILE IS ON THE LAUNCHER IN POSITION 1. LAUNCH POSITIONS 2, 3, 4, AND 5 ARE OCCUPIED BY SA-2 LAUNCHERS. LAUNCH POSITION 7 IS OCCUPIED BY AN UNUSUALLY CONFIGURED, UNIDENTIFIED LAUNCHER WHICH HAS PROMINENT FEATURES RESEMBLING THE OUTRIGGERS OF A PEDESTAL-MOUNTED HEAVY ARTILLERY PIECE, HOWEVER, IT LACKS PROMINENT BREECH AND TUBE FEATURES AND THE BULK OF A FIRING PLATFORM. AN ERECTOR-LIKE OBJECT APPEARS TO EXTEND UPWARD FROM THE CENTER OF THE LAUNCHER. ESSENTIALLY THIS LAUNCHER CONFIGURATION COULD BE IDENTIFIED AT THIS POSITION ON [Redacted]

25X

K1

[Redacted] HOWEVER, POSITION 7 HAS APPEARED OCCUPIED AS EARLY AS [Redacted] JUST SW OF POSITION 6 IS AN SA-2 LAUNCHER AND GENERALLY EAST OF POSITION 6 ARE 7 SA-2 LAUNCHERS. THREE GUIDELINE MISSILES ON TRANSPORTERS ARE OBSERVED JUST SE OF THESE LAUNCHERS. CLOSE TO THE EAST BOUNDARY ARE 6 GUILD MISSILES, 2 ON TRANSPORTERS AND 4 APPARENTLY ON CRADLES. NO EVIDENCE CAN BE FOUND OF A GUILD LAUNCHER AT SITES 1 OR 2. IN ADDITION, 3 SA-2 LAUNCHERS, 10 SETS OF BOGIE WHEELS, AND 6 VANS ARE CLOSE TO THE EAST SITE BOUNDARY.

25X

K1

K1

[Redacted]

MISSION 4031 17-24 AUGUST 1966

EQUIPMENT IN THE CENTRAL AREA IS UNCHANGED SINCE [REDACTED] THE SPOON REST RADAR REMAINS BETWEEN LAUNCH SITES 1 AND 2.

LAUNCH SITE 2 -- NO CHANGE IN FACILITIES SINCE MISSION [REDACTED] A POSSIBLE LAUNCHER, APPROXIMATELY 20 FT LONG, IS DEPLOYED AT LAUNCH POSITION 4. THIS IS THE FIRST EVIDENCE OF OCCUPANCY OF ANY OF THESE LAUNCH POSITIONS ON LARGE-SCALE PHOTOGRAPHY AVAILABLE SINCE MISSION [REDACTED] DETAILS ON THIS LAUNCHER AND THE LAUNCHER AT SITE 1, POSITION 7 ARE SUFFICIENT ONLY TO NEGATE THEM AS SA-2 LAUNCHERS. SINCE [REDACTED] ONE ADDITIONAL VAN HAS APPEARED IN THE CENTRAL GUIDANCE AREA. TEN VANS/PIECES OF EQUIPMENT ARE PARKED ALONG THE EAST BOUNDARY IN THE SEPARATELY FENCED AREA EAST OF SITE 2, ONE PIECE OF EQUIPMENT LESS THAN NOTED ON PASS [REDACTED]

SITE SUPPORT FACILITY -- ON [REDACTED] 20 PIECES OF EQUIPMENT/CRATES WERE OBSERVED IN THE AREA. THE NUMBER HAD DECREASED BY 5 ON PASS [REDACTED]

LAUNCH SITE 3 -- A LAUNCHER IS DEPLOYED AT LAUNCH POSITIONS 2, 3, 5, AND 6. NO LAUNCHERS ARE OBSERVED AT POSITIONS 1 AND 4. ONE DOLLY IS OBSERVED AT THE RAIL EXTREMITY AT POSITION 2, AND 2 DOLLIES AT RAIL EXTREMITIES AT POSITIONS 5 AND 6. A PROBABLE DOLLY IS SEEN CLOSER TO THE LAUNCH POINT AT POSITION 4. IN THE AREA NORTH OF POSITION 3 ARE THE PREVIOUSLY OBSERVED, APPROXIMATELY [REDACTED] LONG, UNIDENTIFIED MISSILE, THE PARTIALLY ASSEMBLED MISSILE [REDACTED] 3 OF THE 4 PREVIOUSLY REPORTED [REDACTED] LONG PROBABLE STRAP-ON BOOSTERS, 6 LAUNCHERS, 16 DOLLIES, A MISSILE TRANSPORTER, AND 4 ADDITIONAL PIECES OF EQUIPMENT.

LAUNCH SITE 4 -- SINCE [REDACTED] THE 4 LAUNCHERS OBSERVED AT POSITIONS 1, 3, 4, AND 6 HAVE DISAPPEARED. ALL POSITIONS AT SITE 4 ARE NOW UNOCCUPIED. ONE DOLLY APPEARS PRESENT AT POSITIONS 1, 2, AND 4 AND 2 DOLLIES AT POSITION 3. THE CENTRAL AREA IS UNCHANGED SINCE [REDACTED]

ELECTRONIC SITE B -- NO APPARENT CHANGE IN FACILITIES AND RADAR POSITIONS SINCE [REDACTED] JUST EAST OF THE RADAR POSITIONS ARE 22 VANS/PIECES OF EQUIPMENT.

LAUNCH SITE 5 -- ALMOST ALL REMNANTS OF THE NORTH LAUNCH POINT HAVE BEEN REMOVED SINCE [REDACTED] THE CENTRAL RAIL OF THE 5 RAILS SERVING THE POSITION



MISSION 4031 17-24 AUGUST 1966

EXTENDS THROUGH THE STRUCTURAL FRAMEWORK OF THE SINGLE OPEN-BAY SECTION. A POSSIBLE LAUNCHER, APPROXIMATELY [REDACTED] REMAINS WEST OF THE CONTROL BUNKER AND A PIECE OF SERVICING EQUIPMENT HAS APPEARED IN THE AREA BETWEEN THE POSSIBLE LAUNCHER AND THE BUNKER. NO SIGNIFICANT CHANGE IS OBSERVED SINCE [REDACTED] IN THE CENTRAL LAUNCH POSITION, BUT ADDITIONAL IRREGULAR DARK STAINS/MATERIALS/OBJECTS APPEAR PROMINENTLY ON THE CONCRETE SURFACE AT THE SOUTH LAUNCH POSITION. THE 2 RAILS EXTENDING FROM THE SOUTHERN LAUNCH POINT TO THE EAST AND TO THE NE ARE PARTIALLY OBSCURED BY THIS MATERIAL.

LAUNCH SITE 6 -- NO SIGNIFICANT CHANGE AT THE NORTH LAUNCH POSITION SINCE [REDACTED] ONE RAIL NOT PREVIOUSLY IDENTIFIED EXTENDS FROM THE LAUNCH POINT TO THE ENE. A SHORT EXTENSION TO MISSILE BAY NO 5 IS OBSERVED AT THE SE CORNER OF THE CURVED MISSILE READY BUILDING. ONE OF THE 5 RAILS PASSES THROUGH THIS EXTENSION, WHICH WAS UNDER CONSTRUCTION ON MISSION

[REDACTED] SEVERAL OF THE BUILDING BAYS APPEAR TO BE OPEN. SINCE [REDACTED] ADDITIONAL WORK ALONG THE NEW EAST PERIMETER ROAD INCLUDES THE CONSTRUCTION OF 2 SMALL APRONS, SEVERAL SHORT TRENCHES, AND 2 SMALL LOW STRUCTURES AT THE EAST CENTRAL BOUNDARY. THE SMALL BUILDING UNDER CONSTRUCTION ALONG THE NORTH SITE BOUNDARY APPEARS INCOMPLETE. THE WEST PORTION OF THE BUILDING HAS NOT BEEN ROOFED, AND THE EAST SIDE IS RAMP SERVED. THE TRENCH, FIRST OBSERVED UNDER EXCAVATION ON [REDACTED] AND PRESUMABLY BRANCHING OFF FROM THE MAIN CABLE LINE SERVING ELECTRONIC SITE C, HAS NOW REACHED THIS BUILDING.

ELECTRONIC SITE C -- NO APPARENT CHANGE AT THE CONTROL CENTER SINCE [REDACTED] SOME OF THE DEBRIS AND CRATES HAVE DISAPPEARED FROM BOTH THE SW AND NE OUTRIGGERS DURING THIS PERIOD. SEVERAL CRATES AND CERTAIN COMPONENTS OF THE BACK-TO-BACK RADAR REMAIN AT BOTH SITES, INCLUDING THE 2 LARGE SCREENS. THE BUNKER AT THE NE OUTRIGGER CAN BE CONFIRMED AS DRIVE-THROUGH. ONE VEHICLE WAS NOTED NEAR THE ENTRANCE TO THE SW OUTRIGGER ON [REDACTED] AND ANOTHER ON [REDACTED] AT THE SITE OF THE 50-FT DOME, THE OBJECTS ON THE GROUND HAVE BEEN REMOVED SINCE [REDACTED]

ELECTRONIC SITES D, E, F, AND G -- NO SIGNIFICANT CHANGE SINCE [REDACTED]

MISSILE STORAGE AND CHECKOUT AREA -- NO CHANGE IN

K1

Approved For Release

~~TOP SECRET~~

CIA-RDP03-00140R000100010040-7

00100010040-7

MISSION 4031 17-24 AUGUST 1966

[Redacted]

K1

FACILITIES SINCE [Redacted] SEVEN SMALL CRATES ARE ALONG THE EAST BOUNDARY, 12 SMALL CRATES IN THE CENTRAL AREA, 4 POSSIBLE CANISTERS NEAR THE SOUTHERNMOST DRIVE-THROUGH BUILDING, 2 MISSILE TRANSPORTERS AND 5 PIECES OF EQUIPMENT NEAR THE NORTH BOUNDARY, AND 1 VEHICLE JUST OUTSIDE THE GATE.

SAM ON-SITE SUPPORT FACILITY -- THE BUILDING UNDER CONSTRUCTION IS VIRTUALLY COMPLETE WITH SOME ROOFING STILL TO BE ACCOMPLISHED. SINCE [Redacted] TRENCHES HAVE BEEN DUG FROM THE CENTRAL BUILDING AT THE FACILITY AND EXTEND TO THIS NEW BUILDING AND THE BUILDING ADJACENT TO THE NORTH. ACTIVITY IS OBSERVED ALSO IMMEDIATELY WEST OF THE NEW BUILDING.

PROBABLE LONG RANGE SAM LAUNCH COMPLEX 2 -- A LAUNCHER IS OBSERVED AT EACH OF THE 12 LAUNCH POSITIONS OF LAUNCH SITES A AND B. AT LAUNCH SITE A, 2 DOLLIES ARE DEPLOYED AT POSITIONS 1, 3, 4, 5, AND 6. TWO DOLLIES, ONE WITH A PROBABLE MISSILE APPROXIMATELY 30 FT LONG, ARE OBSERVED AT POSITION 2. EXTENT OF OCCUPANCY OF THE COVERED CENTRAL AREAS CANNOT BE DETERMINED. EACH POSITION IN THE ASSOCIATED ELECTRONIC SITE IS OCCUPIED BY THE TRACKING/GUIDANCE RADAR. NO SIGNIFICANT CHANGE IS OBSERVED SINCE [Redacted] IN THE BACK NET/SIDE NET SITE 7,000 FT EAST OF THE MISSILE STORAGE AND CHECKOUT AREA OR IN THE 2 UNIDENTIFIED SITES NEARBY. DURING THIS PERIOD A CABLE TRENCH CONNECTION HAS BEEN MADE INTO THE BACK NET/SIDE NET SITE FROM THE TRENCH EXTENDING FROM THE 2 UNIDENTIFIED SITES TO THE CONTROL CENTER AT ELECTRONIC SITE C.

K1

AIRSTRIP -- NO AIRCRAFT OBSERVED OR CHANGES NOTED SINCE

[Redacted]

(SEE ATTACHMENT)

[Redacted]

K1

K1

SEVEROMORSK NAVAL MISSILE STORAGE

UR 6906N 03328E

[Redacted]

OB -- 2 LAMA-CLASS AEM.

NO NEW CONSTRUCTION, CHANGES IN FACILITIES, OR PREVIOUSLY UNREPORTED FEATURES OBSERVED.

[Redacted]

X1

[Redacted]

K1

Approved For Release 2005/05/01 : CIA-RDP03-00140R000100010040-7

TOP SECRET

25X

25X

MISSION 4031 17-24 AUGUST 1966

25X

SEVEROMORSK NAVAL BASE

UR 6904N 03326E

OB -- AT PIERS -- 1 KYNDA-CLASS DLGM, 1 KASHIN-CLASS DLG, 2 SKORYY-CLASS DD, 4 RIGA-CLASS DE, 2 PETYA-CLASS PCE, 1 P-6 HULL, AND 1 YURKA-CLASS MSF OFFSHORE.

K1

NO NEW CONSTRUCTION, CHANGES IN FACILITIES, OR PREVIOUSLY UNREPORTED FEATURES OBSERVED.

K1

25X

K1

GUBA SAYDA NAVAL MISSILE STORAGE

UR 6915N 03320E

THE 4 POSSIBLE MISSILES REPORTED ON [REDACTED] REMAIN IN THE SAME POSITION.

25X

K1

NO NEW CONSTRUCTION, CHANGES IN FACILITIES, OR PREVIOUSLY UNREPORTED FEATURES OBSERVED.

K1

25X

GUBA SAYDA SUBMARINE BASE

UR 6915N 03321E

OB -- [REDACTED] 1 H-II CLASS SSBN (OFFSHORE), 4 G-CLASS SSB (1 OFFSHORE), 1 PROBABLE G-CLASS SSB, 1 UGRA-CLASS AS, 2 PM-124-CLASS AG, 1 BOLVA-CLASS APL, 2 YR, 2 POSSIBLE P-6-CLASS PT, AND 1 NEW CLASS AEM/ASL ARE AT THE PIER AREA.

K1

[REDACTED] 1 H-II-CLASS SSBN, 1 G-CLASS SS, 1 LARGE SS, 1 POTI-CLASS PC OFFSHORE, 3 PROBABLE G-CLASS SSB, 1 POSSIBLE G-CLASS SSB, 1 LARGE SSB, 2 UNIDENTIFIED SS (1 AT PIER AREA PREVIOUSLY OCCUPIED BY SSBN), 1 UGRA-CLASS AS, 1 OSKOL-CLASS ASL, 2 PM-124-CLASS AG, 1 NEW CLASS AEM/ASL, 1 BOLVA-CLASS APL, AND 2 YR AT PIERS.

K1

25X

MISSION 4031 17-24 AUGUST 1966

NO NEW CONSTRUCTION, CHANGES IN FACILITIES, OR PREVIOUSLY UNREPORTED FEATURES OBSERVED.

[Redacted]

[Redacted]

GUBA OLENYA SUBMARINE BASE UR 6913N 03323E

OB -- 3 POSSIBLE G-CLASS SSB, 1 POSSIBLE W-CLASS SSG (LONG BIN), AND 1 POSSIBLE SS AT PIER.

ONLY SMALL SECTION OF BASE IS OBSERVED THROUGH HEAVY CLOUDS.

NO NEW CONSTRUCTION, CHANGES IN FACILITIES, OR PREVIOUSLY UNREPORTED FEATURES OBSERVED.

[Redacted]

POLYARNYY NVL MISSILE SUPPORT FAC KISLAYA UR 6912N 03330E

IDENTIFICATION ONLY.

[Redacted]

VLADIVOSTOK NAVAL BASE AND SHIPYARD 202 UR 4306N 13156E

OB -- IN BUKHTA NOVIK -- 1 SVERDLOV-CLASS CL, 1 KOTLIN-CLASS DD, 3 SKORYY-CLASS DD, 1 RIGA-CLASS DE, 1 OSA-CLASS PTFG, 1 YURKA-CLASS MSF, 7 PROBABLE MO-VI-CLASS PTC, 12 MP-4-CLASS LSC, 2 LCU, 1 AD, AND 3 AUXILIARIES.

IN ZALIV AMURSKIY -- 1 YURKA-CLASS MSF.

IN BUKHTA PARIS -- 3 POTI-CLASS PC, 5 KRONSTADT-CLASS PC, 6 T-58-CLASS MSF, 2 T-43-CLASS MSF, 1 PROBABLE YURKA-CLASS MSF, 1 SMALL AD, AND 1 AUXILIARY.

IN BUKHTA DIOMID -- 3 W-CLASS SS (1 IN FLOATING DOCK),

K1

25X  
25X

MISSION 4031 17-24 AUGUST 1966

3 OSA-CLASS PTFG, 3 POTI-CLASS PC, 1 T-43-CLASS MSF (IN FLOATING DOCK), AND 1 VANYA-CLASS MSI.  
 AT THE NAVAL BASE AND SHIPYARD -- 1 G-CLASS SSB IN DRYDOCK, 2 PROBABLE G-CLASS SSB, 1 Z-CLASS SS WITH LARGE BULBOUS BOW, 1 F/Z-CLASS SS, 4 W-CLASS SS (1 IN TRANSPORTER DOCK), 1 W-CLASS SSR (CANVAS BAG), 1 L-III-CLASS OSS, 1 MEDIUM SS, 1 PROBABLE SS IN DRYDOCK, 1 KRUPNYY-CLASS DDGS, 2 KOTLIN-CLASS DD (1 WITH AFT TURRET REMOVED), 1 SKORYY-CLASS AGT, 2 PETYA-CLASS PCE, 1 DD (STRIPPED), 1 POTI-CLASS PC, 1 T-58-CLASS MSF, 1 T-43-CLASS MSF, 1 POSSIBLE LIBAV-CLASS AGCL, 1 ATREK-CLASS ASL, 2 PRVT-CLASS ASR, AND 1 LCU.  
 A Z-CLASS SS WITH LARGE BULBOUS BOW IS UNDERWAY OUTSIDE HARBOR, 1 W-CLASS SS IS AT HARBOR ENTRANCE, 1 KRONSHADT-CLASS PC IS NEAR HARBOR ENTRANCE, AND 1 T-43-CLASS MSF IS NEAR SEAPLANE BASE.

NO NUCLEAR OR MISSILE STORAGE IDENTIFIED.

NO NEW CONSTRUCTION, CHANGES IN FACILITIES, OR PREVIOUSLY UNREPORTED FEATURES OBSERVED.

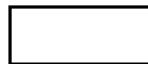
K1



25X

PECHENGA NAVAL BASE LINAKHAMARI

UR 6939N 03122E



OB -- 1 PROBABLE W-CLASS SS, 2 PROBABLE SS, 10 PROBABLE P-6-CLASS PT, 2 T-58-CLASS MSF, 14 T-43-CLASS MSF, 1 POSSIBLE DON-CLASS AS, 3 AUXILIARIES, AND 10 SMALL VESSELS.

NO NEW CONSTRUCTION, CHANGES IN FACILITIES, OR PREVIOUSLY UNREPORTED FEATURES OBSERVED.

K1



25X

LIEPAJA NAVAL BASE AND SHIPYARD

UR 5633N 02102E



OB -- 2 W-CLASS SSG (LONGBIN), 1 PROBABLE W-CLASS SSG (LONGBIN), 3 F/Z-CLASS SS, 14 R/W-CLASS SS (1 IN DRYDOCK), 1 SMALL SS, 1 SVERDLOV-CLASS CL, 1 KOTLIN-CLASS DD, 1 SKORYY-CLASS DD (IN DRYDOCK), 3 RIGA-CLASS DE, 7 POTI-CLASS PC, 1 KRONSHADT-CLASS PC, 1 S.O.1-CLASS SC, 4 T-43-CLASS MSF, 1 VANYA-CLASS MSI, 1 DON-CLASS AS, AND 1 OSKOL-CLASS ASL.

OUTER HARBOR AND PORT CHANNEL ARE NOT COVERED. NO

25X



25X

K1

Approved For Release

TOP SECRET

[Redacted]

TOP SECRET CIA-RDP03-00140R000100010040-7

[Redacted]

25X  
25X

MISSION 4031 17-24 AUGUST 1966

MISSILE STORAGE OBSERVED. NO NEW CONSTRUCTION OR  
CONVERSION ACTIVITY IDENTIFIED.

K1

[Redacted]

25X

RIGA NAVAL BASE & SHPYD BOLDERAJA

UR 5703N 02402E

[Redacted]

OB -- AT WHARVES AND QUAYS -- 19 R/W-CLASS SS, 2  
OSA-CLASS PTFG, 1 KRONSHADT-CLASS PC, 1 SHERSHEN-CLASS  
PTF, 9 T-43-CLASS MSF, 14 PROBABLE T-301-CLASS MSI, 1  
VANYA-CLASS MSI, 7 PROBABLE MO-VI-CLASS PTC, 6 SMALL  
COMBATANTS, AND 6 AUXILIARIES.  
ON REPAIR/STORAGE WAYS -- 6 P-6-CLASS PT, 3 POSSIBLE  
P-4-CLASS PT, AND 16 CANVAS-COVERED SMALL COMBATANTS.

NO NEW CONSTRUCTION, CHANGES IN FACILITIES, OR  
PREVIOUSLY UNREPORTED FEATURES OBSERVED.

K1

[Redacted]

25X

PALDISKI NAVAL BASE

UR 5921N 02404E

[Redacted]

OB -- [Redacted] 7 PROBABLE SS.

NO NEW CONSTRUCTION, CHANGES IN FACILITIES, OR  
PREVIOUSLY UNREPORTED FEATURES OBSERVED.

K1

[Redacted]

25X

**Air  
Facilities**

25X

K1

[Redacted]

Approved For Release 2005/07/17 : CIA-RDP03-00140R000100010040-7

TOP SECRET

[Redacted]

25X

[Redacted]

MISSION 4031 17-24 AUGUST 1966

25X

AIR FACILITIES

AKHTUBINSK/VLADIMIROVKA AIRFIELD

UR 4818N 04613E

[Redacted]

CONTINUING ANALYSIS REVEALS A PROBABLE KENNEL ASM [Redacted] AND 2 POSSIBLE KENNEL ASM (CANVAS COVERED WITH WINGS IN A FOLDED POSITION) LOCATED IN THE MISSILE FABRICATION COMPLEX [Redacted] LOCATED IN THE SHADOW OF A FABRICATION BUILDING IS AN UNIDENTIFIED POSSIBLE AERODYNAMIC VEHICLE [Redacted] NUMEROUS CRATES RANGING IN SIZE FROM [Redacted] ARE SCATTERED THROUGHOUT THE AREA. IN ADDITION, 2 MAJOR BUILDINGS HAVE BEEN CONSTRUCTED IN THE AIRBORNE WEAPONS COMPLEX SINCE [Redacted]

25X

K1

25X

25X

25X

K1

THE 2 NEW-GENERATION AIRCRAFT REPORTED AT THIS AIRFIELD ON THIS MISSION CAN NOW BE IDENTIFIED ON POOR QUALITY IMAGERY FROM [Redacted] BOTH AIRCRAFT WERE LOCATED IN APPROXIMATELY THE SAME POSITION AS THEY ARE ON THIS MISSION. THE POOR QUALITY IMAGERY OF MISSION [Redacted] PRECLUDED PRIOR IDENTIFICATION OF THE AIRCRAFT.

K1

K1

K1

[Redacted]

25X

[Redacted]

TOP SECRET

[Redacted]

25X



**Naval  
Activity/  
Ports**

K1

[Redacted]

Approved For Release 2005/05/04 : CIA-RDP03-00140R000100010040-7

~~TOP SECRET~~

[Redacted]

MISSION 4031 17-24 AUGUST 1966

[Redacted]

25X

25X

NAVAL ACTIVITY/PORTS

25X

GORKIY SHIPYARD & HEAVY EQUIP PLT 112 UR 5622N 04352E

[Redacted]

THE SAIL IS VISIBLE ON A NEW CLASS SS (OVERALL DIMENSIONS ARE APPROXIMATELY [Redacted] WITH AN APPROXIMATE BOW-TO-SAIL DISTANCE OF [Redacted] AND AN APPROXIMATELY [Redacted]

25X

25X

K1

OB -- 1 J-CLASS SSG (ON PASS [Redacted] THIS VESSEL IS AT THE QUAY AND ON PASSES [Redacted] IT IS IN THE LAUNCHING BASIN), A TRANSPORTER DOCK (WITH APPROXIMATELY 250 FT OF KEEL BLOCKS) ADJACENT TO THE LAUNCHING BASIN, 1 SMALL SS, 1 ZEYA-CLASS YRSN, 5 APL/YR, 4 SMALL VESSELS, 2 HYDROFOILS, 1 AIR CUSHION VEHICLE, 1 SURFACE VESSEL ON THE BUILDING WAY, AND A TOTAL OF 4 TRANSPORTER DOCKS.

25X

K1

CONSTRUCTION CONTINUES ON THE LARGE NEW BUILDING AND THE NEW QUAY.

[Redacted]

K1

**Military  
Activity**

K1

[Redacted]

TOP SECRET

[Redacted]

[Redacted]

MISSION 4031 17-24 AUGUST 1966

MILITARY ACTIVITY

AYTOS ARMY BARRACKS 1

BU 4242N 02714E

ON WEST EDGE OF AYTOS.  
SMALL SECURED INSTALLATION CONTAINS 1 LARGE BARRACKS, 4  
SMALLER POSSIBLE BARRACKS, 1 C-SHAPED ADMINISTRATION  
BUILDING, 5 VEHICLE STORAGE BUILDINGS, 8 SUPPORT  
BUILDINGS, AND A POSSIBLE ATHLETIC FIELD.

OB -- 32 TRUCKS AND 4 POSSIBLE TRACKED VEHICLES.

[Redacted]

GOTSE DELCHEV ARMY BARRACKS NEVROKOP 1

BU 4135N 02343E

INSTALLATION CONTAINS 3 BARRACKS, 1 ADMINISTRATION  
BUILDING, 1 VEHICLE MAINTENANCE BUILDING, 1 LONG  
VEHICLE STORAGE BUILDING, AND 6 STORAGE/SUPPORT  
BUILDINGS. A SMALL TRAINING AREA IMMEDIATELY NORTH OF  
THE INSTALLATION, CONTAINS AN AUTOMATIC WEAPONS RANGE  
WITH MOVING TARGETS AND UNIDENTIFIED GROUND SCARRING.

OB -- 2 PROBABLE CARGO TRUCKS AND 10 VEHICLES/PIECES OF  
EQUIPMENT.

[Redacted]

GRUDOVO ARMY BARRACKS WEST 1

BU 4220N 02710E

OB -- 41 FA PIECES, 18 CARGO TRUCKS, 17 CANVAS-COVERED  
VEHICLES, AND APPROXIMATELY 10 VEHICLES/PIECES OF  
EQUIPMENT.

AREA APPEARS OCCUPIED AND ALL PORTIONS APPEAR ACTIVE.

[Redacted]

KHARMANLI ARMY BARRACKS 1 AND 2

BU 4156N 02553E

NO TANKS OBSERVED.

AREA APPEARS OCCUPIED AND ALL PORTIONS APPEAR ACTIVE.

[Redacted]

K1

TOP SECRET

[Redacted]

[Redacted]

MISSION 4031 17-24 AUGUST 1966

MARITSA ARMY BARRACKS 1

BU 4202N 02549E

OB -- 4 TANKS AND 5 POSSIBLE TANKS.

AREA APPEARS OCCUPIED AND ALL PORTIONS APPEAR ACTIVE.

[Redacted]

SAMOKOV ARMY BARRACKS WEST 1

BU 4220N 02332E

1 NM WEST OF SAMOKOV. INSTALLATION CONTAINS 5 BARRACKS, 1 ADMINISTRATION BUILDING, 3 VEHICLE STORAGE BUILDINGS, 3 PROBABLE VEHICLE STORAGE BUILDINGS, 3 VEHICLE MAINTENANCE BUILDINGS, AND 15 OTHER BUILDINGS. AN AREA OF UNIDENTIFIED ACTIVITY IS LOCATED ON THE WEST EDGE AND CONTAINS 10 SMALL BUILDINGS.

OB -- 8 CARGO TRUCKS.

[Redacted]

TURGOVISHTA ARMY BARRACKS 1

BU 4314N 02633E

NO TANKS OBSERVED.

AREA APPEARS OCCUPIED AND ALL PORTIONS APPEAR ACTIVE.

[Redacted]

SHAO-KUAN ARMY BARRACKS AREA 1

CH 2442N 11336E

OB -- 35 POSSIBLE CARGO TRUCKS.

INSTALLATION IS PROBABLY SECURED. NO DEFENSES, INDICATION OF TROOP BUILDUP, STOCKPILING, OR UNUSUAL ACTIVITY OBSERVED.

NO NEW CONSTRUCTION, CHANGES IN FACILITIES, OR PREVIOUSLY UNREPORTED FEATURES OBSERVED.

[Redacted]

25X  
25X  
25X

K1

[Redacted]

TOP SECRET

[Redacted]

MISSION 4031 17-24 AUGUST 1966

CHE-CHIANG MILITARY COMPLEX

CH 2645N 11236E

OB -- 2 VEHICLES.

NO INDICATION OF TROOP OR SUPPLY BUILDUP.

NO NEW CONSTRUCTION, CHANGES IN FACILITIES, OR PREVIOUSLY UNREPORTED FEATURES OBSERVED.

[Redacted]

CHU-CHOU AMMUNITION DEPOT NORTH

CH 2754N 11306E

4.5 NM NW OF CHU-CHOU.

A RAIL-SERVED, SECURED INSTALLATION CONTAINS 3 LARGE TRANSSHIPMENT BUILDINGS, 2 ADMINISTRATION BUILDINGS, 33 STORAGE BUILDINGS, AND 10 SUPPORT BUILDINGS.

OB -- 20 CARGO TRUCKS AND 20 OTHER VEHICLES.

[Redacted]

HENG-YANG AMMUNITION DEPOT ENE FEN-SHUI-AO CH 2656N 11243E

OB -- 4 PROBABLE CARGO TRUCKS.

NO OPEN STORAGE, EVIDENCE OF TROOP BUILDUP, STOCKPILING OF MATERIALS, OR CW MUNITIONS OBSERVED.

NO NEW CONSTRUCTION, CHANGES IN FACILITIES, OR PREVIOUSLY UNREPORTED FEATURES OBSERVED.

[Redacted]

HSING-TAI MILITARY COMPLEX

CH 3704N 11430E

OB -- 6 TANKS, 7 POSSIBLE TANKS, AND 11 CARGO TRUCKS.

NO NEW CONSTRUCTION, CHANGES IN FACILITIES, OR PREVIOUSLY UNREPORTED FEATURES OBSERVED.

AREA APPEARS OCCUPIED AND ALL PORTIONS APPEAR ACTIVE.

[Redacted]

K1

K1

K1

K1

25X

TOP SECRET

[Redacted]

[Redacted]

25X

MISSION 4031 17-24 AUGUST 1966

25X  
25X  
25X

HUANG-PU ARMY SUPPLY DEPOT EAST CH 2305N 11325E

NO CHANGE IN LEVEL OF OCCUPANCY OR INDICATION OF TROOP OR SUPPLY BUILDUP.

NO NEW CONSTRUCTION, CHANGES IN FACILITIES, OR PREVIOUSLY UNREPORTED FEATURES OBSERVED.

[Redacted]

HUANG-PEI MILITARY INSTALLATIONS CH 3052N 11420E

OB -- 20 VEHICLES/PIECES OF EQUIPMENT.

NO NEW CONSTRUCTION, CHANGES IN FACILITIES, OR PREVIOUSLY UNREPORTED FEATURES OBSERVED.

[Redacted]

HUO-LU MILITARY AREAS CH 3805N 11425E

ONLY AREAS A AND D COVERED.

NO NEW CONSTRUCTION, CHANGES IN FACILITIES, OR PREVIOUSLY UNREPORTED FEATURES OBSERVED.

NO VEHICLES, WEAPONS, OR EQUIPMENT OBSERVED.

[Redacted]

KAN-CHOU ARMY BARRACKS SOUTHWEST CH 2552N 11455E

OB -- 2 CARGO TRUCKS.

NO INDICATION OF TROOP OR SUPPLY BUILDUP.

NO NEW CONSTRUCTION, CHANGES IN FACILITIES, OR PREVIOUSLY UNREPORTED FEATURES OBSERVED.

[Redacted]

25X

25X  
25X

K1

Approved For Release

~~TOP SECRET~~

A-RDP03-00140R000100010040-7

MISSION 4031 17-24 AUGUST 1966

KUANG-CHOU MILITARY STORAGE AREA

CH 2310N 11314E

OB -- 1 VEHICLE.  
INSTALLATION IS SECURED. NO DEFENSES, EVIDENCE OF  
TROOP BUILDUP, OR STOCKPILING OBSERVED.

NO NEW CONSTRUCTION, CHANGES IN FACILITIES, OR  
PREVIOUSLY UNREPORTED FEATURES OBSERVED.

[Redacted]

KUANG-CHOU STORAGE AREA SHA-HO NORTHWEST CH 2309N 11318E

NO INDICATION OF TROOP OR SUPPLY BUILDUP OBSERVED.

NO NEW CONSTRUCTION, CHANGES IN FACILITIES, OR  
PREVIOUSLY UNREPORTED FEATURES OBSERVED.

NO VEHICLES, WEAPONS, OR EQUIPMENT OBSERVED.

[Redacted]

MING-CHIANG BKS AND HQ 45 INFANTRY DIV NW CH 3229N 11401E

IDENTIFICATION ONLY.

[Redacted]

NAN-KOU MILITARY COMPLEX

CH 4011N 11608E

OB -- 7 TANKS/SP GUNS, 3 PROBABLE TANKS/SP GUNS, AND 14  
VEHICLES/PIECES OF EQUIPMENT.

NO INDICATION OF CW STORAGE.

NO NEW CONSTRUCTION, CHANGES IN FACILITIES, OR  
PREVIOUSLY UNREPORTED FEATURES OBSERVED.

[Redacted]



TOP SECRET

MISSION 4031 17-24 AUGUST 1966

YANG-FANG ARMY BARRACKS

CH 4008N 11608E

IDENTIFICATION ONLY.

[Redacted]

CHANG-PING BARRACKS AREA AND SUPPLY DEPOT CH 4013N 11615E

IDENTIFICATION ONLY.

[Redacted]

PEI-CHING ACADEMY OF MILITARY SCIENCES CH 3955N 11615E

CONSTRUCTION ACTIVITY OBSERVED ALONG SOUTH EDGE OF ACADEMY OF MILITARY SCIENCES APPEARS TO BE PART OF A TRANSPORTATION SYSTEM. IT IS NOT ASSOCIATED WITH THE ACADEMY. NO VEHICLES, WEAPONS, OR EQUIPMENT OBSERVED.

[Redacted]

TSAO-WU STORAGE AREA

CH 2432N 11337E

NO INDICATION OF TROOP OR SUPPLY BUILDUP. NO CW MUNITIONS OBSERVED.

NO NEW CONSTRUCTION, CHANGES IN FACILITIES, OR PREVIOUSLY UNREPORTED FEATURES OBSERVED.

NO VEHICLES, WEAPONS, OR EQUIPMENT OBSERVED.

[Redacted]

OLOMOUC ARMY BARRACKS NORTH

CZ 4936N 01715E

IN CENTER OF OLOMOUC ON WEST SIDE OF RIVER. INSTALLATION CONTAINS 4 BARRACKS, 1 E-SHAPED ADMINISTRATION BUILDING, 1 L-SHAPED ADMINISTRATION BUILDING, 5 MAINTENANCE BUILDINGS, 3 STORAGE BUILDINGS, 3 VEHICLE STORAGE BUILDINGS, AND 5 SUPPORT BUILDINGS.

OB -- 25 CARGO TRUCKS.

NO INDICATION OF CW MUNITIONS STORAGE OR PRODUCTION IN THE AREA.

TOP SECRET

25X

K1

Approved For Release

~~TOP SECRET~~

CIA-RDP03-00140R000100010040-7

25X

MISSION 4031 17-24 AUGUST 1966

K1

[Redacted]

25X

UHERSKE HRADISTE ARMY BARRACKS

CZ 4904N 01728E

[Redacted]

ON NE EDGE OF UHERSKE HRADISTE.  
INSTALLATION CONTAINS 1 BARRACKS, 4 ADMINISTRATION BUILDINGS/BARRACKS, 3 QUARTERS, 5 STORAGE BUILDINGS, 9 VEHICLE STORAGE/MAINTENANCE BUILDINGS, AND 3 SUPPORT BUILDINGS.

OB -- 9 TANKS/SP GUNS AND 15 CARGO TRUCKS.

K1

[Redacted]

25X

ABASAR ARMY BARRACKS 1

HU 4748N 02002E

[Redacted]

1 NM EAST OF ABASAR.  
INSTALLATION CONTAINS 3 BARRACKS, 1 ADMINISTRATION BUILDING, 1 VEHICLE MAINTENANCE BUILDING, 8 SUPPORT BUILDINGS, 1 BUILDING UNDER CONSTRUCTION, AN OBSTACLE COURSE, AND AN EXPLOSIVE STORAGE AREA WITH 2 BUILDINGS. A TRAINING AREA 1 NM EAST CONTAINS A DRIVER-TRAINING COURSE.

OB -- 38 PROBABLE TANKS AND 31 OTHER VEHICLES.

K1

[Redacted]

25X

KISKUNMAJSA ARMY BARRACKS 1 & 2

HU 4628N 01945E

[Redacted]

OB -- 17 POSSIBLE TANKS AND 108 CARGO TRUCKS.

AREA APPEARS OCCUPIED AND ALL PORTIONS APPEAR ACTIVE.

K1

[Redacted]

25X

MARGALI ARMY BARRACKS 1

HU 4635N 01724E

[Redacted]

OB -- 40 CARGO TRUCKS, 5 UTILITY TRUCKS, AND 4 SMALL TRAILERS.

AREA APPEARS OCCUPIED AND ALL PORTIONS APPEAR ACTIVE.

K1

[Redacted]

25X

25X  
25X  
25X

TOP SECRET

Approved For Release 2005/07/17 : CIA-RDP03-00140R000100010040-7

MISSION 4031 17-24 AUGUST 1966

PAPA ARMY BARRACKS BOTTYAN JANOS 1 HU 4718N 01729E

OB -- 30 TANKS/SP GUNS AND 85 CARGO TRUCKS.

AREA APPEARS OCCUPIED AND ALL PORTIONS APPEAR ACTIVE.

[REDACTED]

TAPOLCA TRAINING AREA 404 HU 4653N 01723E

NO NEW CONSTRUCTION, CHANGES IN FACILITIES, OR PREVIOUSLY UNREPORTED FEATURES OBSERVED.

NO VEHICLES, WEAPONS, OR EQUIPMENT OBSERVED.

[REDACTED]

TAPOLCA TRAINING AREA 405 HU 4657N 01726E

OB -- 11 TANKS/SP GUNS AND 38 CARGO TRUCKS.

NO NEW CONSTRUCTION, CHANGES IN FACILITIES, OR PREVIOUSLY UNREPORTED FEATURES OBSERVED.

[REDACTED]

TAPOLCA ARMY BARRACKS DOBO ISTVAN 1 HU 4653N 01724E

1.5 NM WEST OF TAPOLCA.  
INSTALLATION CONTAINS 11 BARRACKS, 8 QUARTERS, 4 ADMINISTRATION BUILDINGS, 1 MONITOR-ROOFED MAINTENANCE BUILDING, 4 OTHER MAINTENANCE BUILDINGS, 40 STORAGE BUILDINGS, 3 VEHICLE STORAGE/MAINTENANCE BUILDINGS, AND 30 SUPPORT BUILDINGS.

OB -- 12 TANKS/SP GUNS AND 22 CARGO TRUCKS.

[REDACTED]

ORZYSZ ARMY BARRACKS SZLAGA 8 PO 5343N 02203E

6 NM NE OF ORZYSZ.  
INSTALLATION CONTAINS 20 BARRACKS, 10 BARRACKS/ADMINISTRATION BUILDINGS, 6 ADMINISTRATION BUILDINGS, 7 QUARTERS/BARRACKS, 10 QUARTERS, 14

25X

25X

K1

[Redacted]

[Redacted]

25X  
25X

MISSION 4031 17-24 AUGUST 1966

[Redacted]

STORAGE/VEHICLE STORAGE BUILDINGS, AN SA-2 SAM SITE, 8 STORAGE BUILDINGS, 2 MAINTENANCE BUILDINGS, 15 SUPPORT BUILDINGS, AN OBSTACLE COURSE, 2 SMALL-ARMS FIRING RANGES, AN ATHLETIC FIELD, AND A SWIMMING POOL.

OB -- 7 PROBABLE CARGO TRUCKS.

[Redacted]

K1

25X

ORZYSZ TRAINING AREA 402

PO 5344N 02203E

[Redacted]

TRAINING AREA COVERING AN AREA OF APPROXIMATELY 50 SQ MI SE OF ORZYSZ CONTAINS 4 COMBINED-ARMS RANGES, NUMEROUS FA POSITIONS, 2 IMPACT AREAS, AND A SMALL-ARMS FIRING RANGE.

OB -- [Redacted] -- 6 VEHICLES.

[Redacted]

K1

25X

NYSA ARMY BARRACKS EISKELLER 2

PO 5028N 01718E

[Redacted]

1.5 NM SW OF NYSA. INSTALLATION CONTAINS 4 MULTISTORY BARRACKS, 3 PROBABLE QUARTERS BUILDINGS, 1 ADMINISTRATION BUILDING, 22 STORAGE BUILDINGS, AND 10 SUPPORT BUILDINGS.

A TRAINING AREA IMMEDIATELY SOUTH CONTAINS A TANK/ASSAULT GUN RANGE WITH 1 TANK RUN AND 1 MOVING TARGET LANE.

OB -- 15 TANKS/SP GUNS AND 20 CARGO TRUCKS.

[Redacted]

K1

25X

NYSA ARMY BARRACKS KLASEWITZ 1

PO 5029N 01721E

[Redacted]

ON NE EDGE OF NYSA. INSTALLATION CONTAINS 6 BARRACKS, 1 ADMINISTRATION BUILDING, 15 STORAGE BUILDINGS, 1 MONITOR-ROOFED MAINTENANCE BUILDING, 1 VEHICLE STORAGE SHED, 10 SUPPORT BUILDINGS, 1 ATHLETIC FIELD, AND 1 SWIMMING POOL.

25X

[Redacted]

[Redacted]

5X

K1

[Redacted]

TOP SECRET

[Redacted]

[Redacted]

MISSION 4031 17-24 AUGUST 1966

A TRAINING AREA IMMEDIATELY WEST CONTAINS 1 OBSTACLE COURSE, 2 CLOSED-LOOP DRIVER-TRAINING COURSES, AND 1 LARGE, POSSIBLE CLOSED-LOOP OBSTACLE COURSE.

NUMEROUS VEHICLE REVETMENTS, TRENCHING, AND SCARRING OBSERVED THROUGHOUT THE AREA.

OB -- 6 CARGO TRUCKS.

[Redacted]

ORZYSZ ARMY BARRACKS 1

PO 5348N 02157E

[Redacted]

INSTALLATION CONTAINS 40 BARRACKS, 5 ADMINISTRATION BUILDINGS, 20 QUARTERS, 5 MAINTENANCE BUILDINGS, 3 VEHICLE STORAGE BUILDINGS, 35 STORAGE BUILDINGS, A POWERPLANT, 40 SUPPORT BUILDINGS, AN OBSTACLE COURSE, 4 ATHLETIC FIELDS, AND 1 BUILDING UNDER CONSTRUCTION.

OB -- [Redacted] - 1 POSSIBLE TANK, 10 VEHICLES/PIECES OF EQUIPMENT, 1 HOUND, AND 1 HARE.

[Redacted] - 1 HARE, 3 CARGO TRUCKS, AND 2 OTHER VEHICLES.

[Redacted]

WROCLAW HQ SILESIAN MILITARY DISTRICT

PO 5105N 01700E

[Redacted]

THIS TARGET IS REPORTED UNDER

[Redacted]

[Redacted]

CARACAL ARMY BARRACKS 2

RU 4407N 02421E

NORTH EDGE OF CARACAL. INSTALLATION CONTAINS 19 BARRACKS, 4 ADMINISTRATION BUILDINGS, 4 VEHICLE STORAGE BUILDINGS, 8 LARGE STORAGE BUILDINGS, 7 STORAGE BUILDINGS, APPROXIMATELY 40 OTHER BUILDINGS, AND AN ATHLETIC FIELD. A SECOND AREA, APPROXIMATELY 5 NM WEST, CONTAINS 12 BARRACKS, 2 ADMINISTRATION BUILDINGS, 3 VEHICLE MAINTENANCE/STORAGE BUILDINGS, 1 HIGH-BAY HEAVY MAINTENANCE BUILDING, 12 OTHER BUILDINGS, AND A POSSIBLE SMALL-ARMS RANGE. A SMALL TRAINING AREA IS DIRECTLY WEST OF THE SECOND AREA, AND CONTAINS A TRACKED VEHICLE, DRIVER-TRAINING COURSE AND AN AUTOMATIC WEAPONS SUB-CALIBRE RANGE.

[Redacted]

TOP SECRET

[Redacted]

Approved For Release 2005/07/17 : CIA-RDP03-00140R000100010040-7

MISSION 4031 17-24 AUGUST 1966

ØB -- 4 TANKS, 14 CARGO TRUCKS, AND 27 OTHER VEHICLES.

[REDACTED]

FOCSANI ARMY BKS S 1/2 AMMO DUMP SOUTH RU 4541N 02710E

NO TANKS OBSERVED.

AREA APPEARS OCCUPIED AND ALL PORTIONS APPEAR ACTIVE.

[REDACTED]

FOCSANI ARMY BARRACKS SOUTH 1/2 RU 4541N 02711E

THIS INSTALLATION IS REPORTED UNDER [REDACTED]

[REDACTED]

PITESTI ARMY BARRACKS 1/5 RU 4451N 02451E

ØB -- THREE PROBABLE TANKS/SP GUNS (AT TANK RANGE), 3 POSSIBLE TANKS/SP GUNS, 32 CARGO TRUCKS, AND APPROXIMATELY 50 OTHER VEHICLES.

NO NEW CONSTRUCTION, CHANGES IN FACILITIES, OR PREVIOUSLY UNREPORTED FEATURES OBSERVED.

[REDACTED]

GYOR ARMY BARRACKS RAKOCZI 201 HU 4740N 01738E

ØB -- 2 CARGO TRUCKS.

NO NEW CONSTRUCTION, CHANGES IN FACILITIES, OR PREVIOUSLY UNREPORTED FEATURES OBSERVED.

[REDACTED]

GYOR ARMY BARRACKS VADASZ 221 HU 4740N 01739E

NO NEW CONSTRUCTION, CHANGES IN FACILITIES, OR PREVIOUSLY UNREPORTED FEATURES OBSERVED.

NO VEHICLES, WEAPONS, OR EQUIPMENT OBSERVED.

K1

[Redacted]

Approved For Release 2005/04/14 : CIA-RDP03-00140R000100010040-7

~~TOP SECRET~~

25X

25X

MISSION 4031 17-24 AUGUST 1966

[Redacted]

K1

[Redacted]

25X

GYOR ARMY BARRACKS 6

HU 4741N 01737E

THIS INSTALLATION CANNOT BE IDENTIFIED WITHIN THE URBAN AREA.

[Redacted]

K1

GYOR HO BARRACKS TELEKI

HU 4741N 01738E

INSTALLATION CANNOT BE IDENTIFIED WITHIN THE URBAN AREA.

[Redacted]

K1

GYOR STORAGE DEPOT

HU 4741N 01739E

INSTALLATION CANNOT BE IDENTIFIED WITHIN AN URBAN AREA.

[Redacted]

K1

BENDERY ARMY BARRACKS CITADEL PUG AL 2

UR 4650N 02929E

ON NE EDGE OF BENDERY.

SECURED INSTALLATION, PARTIALLY WITHIN THE CONFINES OF AN OLD FORT, CONTAINS 1 LARGE C-SHAPED BARRACKS/ADMINISTRATION BUILDING, 3 BARRACKS, 1 POSSIBLE BARRACKS, 11 VEHICLE STORAGE BUILDINGS, 19 STORAGE BUILDINGS, 10 SUPPORT BUILDINGS, AN ATHLETIC FIELD, 5 VEHICLE/EQUIPMENT MOTOR POOL/STORAGE AREAS.

OB -- 72 PROBABLE PMP PONTONS ON CARRIERS, APPROXIMATELY 100 POSSIBLE TPP PONTONS ON THE GROUND, APPROXIMATELY 90 POSSIBLE TPP PONTON CARRIERS, 12 PROBABLE BMK-90 POWER BOATS, 4 PROBABLE BMK-150 POWER BOATS, 2 PROBABLE TRUCK-MOUNTED CRANES, 6 PROBABLE NEW [Redacted] TRUCK TRACTORS WITH LOWBED TRAILERS, 3 CARGO TRUCKS WITH LOWBED TRAILERS, APPROXIMATELY 420 CARGO TRUCKS, AND APPROXIMATELY 45 PIECES OF EQUIPMENT.

[Redacted]

K1

K1

[Redacted]

25X

25X

~~TOP SECRET~~

~~TOP SECRET~~

25X  
25X  
25X

MISSION 4031 17-24 AUGUST 1966

BENDERY ARMY BARRACKS AL 1

UR 4650N 02927E

NO MILITARY INSTALLATION OR ACTIVITY OBSERVED AT REFERENCED COORDINATES. AREA CONTAINS CIVILIAN HOUSING AND TRANSPORTATION FACILITIES.

[Redacted]

BEREZA ARMY BARRACKS YASELDA AL 2

UR 5232N 02459E

SW SECTION OF BEREZA. SECURED INSTALLATION CONTAINS 2 LARGE BARRACKS, 2 SMALLER PROBABLE BARRACKS, 2 ADMINISTRATION BUILDINGS, 3 VEHICLE STORAGE BUILDINGS, 1 VEHICLE MAINTENANCE/STORAGE BUILDING, 12 STORAGE/SUPPORT BUILDINGS, AN ATHLETIC FIELD AND A PROBABLE OBSTACLE COURSE. PROBABLY ASSOCIATED MILITARY AREA IS LOCATED SE, DIRECTLY ACROSS THE ROAD AND CONTAINS 9 SMALL BARRACKS BUILDINGS, 3 ADMINISTRATION BUILDINGS, 10 SUPPORT BUILDINGS, AND A VEHICLE MAINTENANCE AREA WITH 1 VEHICLE MAINTENANCE BUILDING, 4 SUPPORT BUILDINGS, AND 1 BUILDING UNDER CONSTRUCTION.

OB -- 32 VEHICLES.

[Redacted]

BEREZA BARRACKS NORTHWEST

UR 5233N 02455E

2.5 NM NW OF BEREZA AND 1 NM EAST OF BEREZA AIRFIELD. INSTALLATION CONTAINS 3 U-SHAPED BARRACKS, 1 U-SHAPED ADMINISTRATION/BARRACKS, 4 VEHICLE MAINTENANCE/STORAGE BUILDINGS, 5 STORAGE BUILDINGS, 20 OTHER BUILDINGS, AND AN ATHLETIC FIELD.

OB -- 75 VEHICLES.

[Redacted]

BEREZINO ARMY BARRACKS AL 1

UR 4614N 02912E

NO MILITARY INSTALLATION OR ACTIVITY OBSERVED AT REFERENCED COORDINATES. AREA CONTAINS A POL STORAGE AREA, A RAIL SIDING, AND SUPPORT FACILITIES.

[Redacted]

~~TOP SECRET~~

25X  
25X



MISSION 4031 17-24 AUGUST 1966

25X  
25X  
25X

BOBRUYSK AMMUNITION STORAGE

UR 5305N 02913E

OB -- APPROXIMATELY 25 PIECES OF EQUIPMENT.

NO NEW CONSTRUCTION, CHANGES IN FACILITIES, OR PREVIOUSLY UNREPORTED FEATURES OBSERVED.

[REDACTED]

BOBRUYSK ARMY BARRACKS AFLD NE AL 6

UR 5307N 02914E

ON THE NE EDGE OF BOBRUYSK AIRFIELD.

THE MAJOR PORTION OF THIS INSTALLATION IS SUPPORT FOR BOBRUYSK AIRFIELD, HOWEVER, PRESENT PHOTOGRAPHY PRECLUDES SEPARATION OF THE AIRFIELD SUPPORT AREA AND THE GROUND FORCE INSTALLATION.

SECURED INSTALLATION CONTAINS 31 BARRACKS, 21 OFFICERS QUARTERS, 7 ADMINISTRATION BUILDINGS, 6 VEHICLE STORAGE BUILDINGS, 10 VEHICLE MAINTENANCE/STORAGE BUILDINGS, APPROXIMATELY 100 OTHER MAJOR BUILDINGS, AND 2 ATHLETIC FIELDS.

OB -- 1 POSSIBLE TANK, 16 CARGO TRUCKS, 23 POL TRUCKS, 8 PROBABLE TRUCKS, AND 40 OTHER VEHICLES/PIECES OF EQUIPMENT.

[REDACTED]

BOBRUYSK ARMY BARRACKS SOUTHEAST AL 4

UR 5306N 02917E

AREA CONSISTS OF APPROXIMATELY 3 RANGE SUPPORT BUILDINGS AND IS WITHIN BOBRUYSK ARMY TRAINING AREA SOUTHEAST [REDACTED]

[REDACTED]

BOBRUYSK ARMY BARRACKS AL 5

UR 5308N 02912E

NO MILITARY INSTALLATION OR ACTIVITY OBSERVED AT REFERENCED COORDINATES.

AREA CONSISTS OF CIVILIAN HOUSING AND POSSIBLE ADMINISTRATION-TYPE BUILDINGS.

25X  
25X

TOP SECRET

MISSION 4031 17-24 AUGUST 1966

BOBRUYSK ARMY TRAINING AREA SOUTHEAST UR 5303N 02918E

OB -- 33 TANKS, 1 BAT (TRACKED PRIME MOVER WITH BLADE), AND 2 OTHER VEHICLES.

NO NEW CONSTRUCTION, CHANGES IN FACILITIES, OR PREVIOUSLY UNREPORTED FEATURES OBSERVED.

BOBRUYSK ARMY SUPPLY DEPOT NORTHWEST UR 5308N 02911E

OB -- 7 CARGO TRUCKS OBSERVED THROUGHOUT THE DEPOT.

NO NEW CONSTRUCTION, CHANGES IN FACILITIES, OR PREVIOUSLY UNREPORTED FEATURES OBSERVED.

BORISOV ARMY BARRACKS CENTRAL AL 4 UR 5413N 02831E

OB -- APPROXIMATELY 125 CARGO TRUCKS.

NO NEW CONSTRUCTION, CHANGES IN FACILITIES, OR PREVIOUSLY UNREPORTED FEATURES OBSERVED.

BORISOV ARMY BARRACKS SOUTH AL 2 UR 5411N 02829E

OB -- 25 TANKS/SP GUNS, 17 GSP AMPHIBIOUS FERRIES, 33 K-61 AMPHIBIOUS VEHICLES, 31 POSSIBLE PMP PONTONS, 20 CARGO TRUCKS, APPROXIMATELY 55 CANVAS-COVERED VEHICLES, AND APPROXIMATELY 50 OTHER VEHICLES/PIECES OF EQUIPMENT.

AREA APPEARS OCCUPIED AND ALL PORTIONS APPEAR ACTIVE.

TOP SECRET

MISSION 4031 17-24 AUGUST 1966

BORISOV ARMY BARRACKS WEST UR 5414N 02828E

OB -- 36 PROBABLE TANKS AND APPROXIMATELY 200 OTHER VEHICLES/PIECES OF EQUIPMENT.

AREA APPEARS OCCUPIED AND ALL PORTIONS APPEAR ACTIVE.

[Redacted]

BORISOV SUPPLY DEPOT & POL STORAGE AREA UR 5412N 02830E

OB -- APPROXIMATELY 40 PIECES OF EQUIPMENT.

NO NEW CONSTRUCTION, CHANGES IN FACILITIES, OR PREVIOUSLY UNREPORTED FEATURES OBSERVED.

[Redacted]

BORISOV TRAINING AREA & RANGE WEST UR 5411N 02821E

NO VEHICLES, WEAPONS, OR EQUIPMENT OBSERVED.

AREA APPEARS OCCUPIED AND ALL PORTIONS APPEAR ACTIVE.

[Redacted]

BORISOV ARMY TRAINING AREA II UR 5408N 02829E

NO NEW CONSTRUCTION, CHANGES IN FACILITIES, OR PREVIOUSLY UNREPORTED FEATURES OBSERVED.

NO VEHICLES, WEAPONS, OR EQUIPMENT OBSERVED.

[Redacted]

BORZYA ARMY BARRACKS UR 5023N 11631E

NO VEHICLES, WEAPONS, OR EQUIPMENT OBSERVED.

AREA APPEARS OCCUPIED AND ALL PORTIONS APPEAR ACTIVE.

[Redacted]

25X  
25X  
25X

K1

Approved For Release

TOP SECRET  
CIA-RDP03-00140R000100010040-7

MISSION 4031 17-24 AUGUST 1966

BREST ARMY BARRACKS SOUTHEAST

UR 5203N 02344E

OB -- 45 TANKS, 11 PROBABLE TRACKED VEHICLES, 16 PROBABLE 57MM AAA PIECES, 1 POSSIBLE FIRE CAN RADAR, 3 POSSIBLE RANGER, 12 FA PIECES, APPROXIMATELY 16 POSSIBLE FA PIECES, APPROXIMATELY 140 CARGO TRUCKS, AND APPROXIMATELY 30 OTHER VEHICLES/PIECES OF EQUIPMENT.

NO NEW CONSTRUCTION, CHANGES IN FACILITIES, OR PREVIOUSLY UNREPORTED FEATURES OBSERVED.

[REDACTED]

CHELYABINSK ARMY BARRACKS AL 2

UR 5510N 06125E

INSTALLATION COVERS LESS THAN 1 SQUARE BLOCK IN THE CENTER OF CHELYABINSK AND CONSISTS OF ONE 3-STORY BUILDING, 2 CONNECTED 2-STORY BUILDINGS, AND 2 SINGLE STORY BUILDINGS ARRANGED AROUND AN OPEN PARKING AREA. INSTALLATION HAS NO MILITARY FEATURES DISCERNIBLE. NO TANKS, OTHER VEHICLES, OR EQUIPMENT OBSERVED.

[REDACTED]

CHERKASSY ARMY BARRACKS AL 1

UR 4926N 03202E

OB -- AT LEAST 50 VEHICLES/PIECES OF EQUIPMENT OBSERVED IN CLOUD-FREE AREAS.

AREA APPEARS OCCUPIED AND ALL PORTIONS APPEAR ACTIVE.

[REDACTED]

CHERKASSY ARMY BARRACKS SOUTH AL 2

UR 4925N 03201E

OB -- AT LEAST 20 VEHICLES/PIECES OF EQUIPMENT OBSERVED IN CLOUD-FREE AREAS.

AREA APPEARS OCCUPIED AND ALL PORTIONS APPEAR ACTIVE.

[REDACTED]

K1

K1

K1

K1

25X  
25X

TOP SECRET

MISSION 4031 17-24 AUGUST 1966

25X  
25X  
25X

DRETUN ARMY TRAINING AREA

UR 5538N 02913E

IDENTIFICATION ONLY.

[Redacted]

[Redacted]

GUSEV ARMY BARRACKS NORTHEAST AL 2

UR 5435N 02213E

OB -- [Redacted] -- 64 TANKS, 4 CARGO TRUCKS, AND 2 VEHICLES/PIECES OF EQUIPMENT.

[Redacted] -- 28 TANKS, 37 POSSIBLE TANKS/ASSAULT GUNS, 4 PROBABLE TMM TRUCK-MOUNTED BRIDGES, AND 12 CARGO TRUCKS.

NO NEW CONSTRUCTION, CHANGES IN FACILITIES, OR PREVIOUSLY UNREPORTED FEATURES OBSERVED.

[Redacted]

25X

GUSEV ARMY BARRACKS ROMINTE R SOUTH AL 3 UR 5435N 02210E

[Redacted]

ON WEST EDGE OF GUSEV. INSTALLATION CONTAINS 4 BARRACKS, 1 ADMINISTRATION BUILDING, 10 VEHICLE STORAGE BUILDINGS, 4 SUPPORT BUILDINGS, 3 STORAGE BUILDINGS, AND A SMALL-ARMS FIRING RANGE.

OB -- [Redacted] -- 6 CARGO TRUCKS AND 3 OTHER VEHICLES/PIECES OF EQUIPMENT.

[Redacted]

25X

GUSEV ARMY TRAINING AREA TA 1

UR 5437N 02215E

[Redacted]

2 NM NE OF GUSEV. INSTALLATION CONTAINS A FLAT-TRAJECTORY, STATIC FIRING, MOVING TARGET RANGE, 1 STATIC FIRING RANGE, AN AUTOMATIC WEAPONS FIRING RANGE, AND 14 SUPPORT BUILDINGS.

OB -- NONE OBSERVED.

[Redacted]

TOP SECRET

25X  
25X

MISSION 4031 17-24 AUGUST 1966

GUSEV HQ 26 GDS MTZ RIFLE DIVISION AL 4 UR 5435N 02212E

NO TANKS OBSERVED.

AREA APPEARS OCCUPIED AND ALL PORTIONS APPEAR ACTIVE.

[Redacted]

GUSEV TRAINING AREA SOUTHWEST TA 2 UR 5433N 02211E

2.5 NM SW OF GUSEV.  
INSTALLATION CONTAINS 1 TANK/ASSAULT-GUN FIRING RANGE,  
1 FLAT-TRAJECTORY/SUBCALIBER FIRING RANGE WITH 4 OVAL  
CIRCUITS FOR VEHICLES, A NETWORK OF PERSONNEL TRENCHES,  
2 VEHICLE STORAGE BUILDINGS, AN ADMINISTRATION  
BUILDING, 12 SUPPORT BUILDINGS, AND 15 TENTS.

OB -- [Redacted] -- 2 POSSIBLE TANKS AND 7 UNIDENTIFIED  
VEHICLES.

[Redacted] -- 2 TANKS.

[Redacted]

IZMAIL STORAGE AREA UR 4524N 02850E

NO NEW CONSTRUCTION, CHANGES IN FACILITIES, OR  
PREVIOUSLY UNREPORTED FEATURES OBSERVED.

NO VEHICLES, WEAPONS, OR EQUIPMENT OBSERVED.

[Redacted]

MOZYR ARMY BARRACKS KALINKOVICHI AL 1 UR 5202N 02911E

OB -- 5 CARGO TRUCKS.

AREA APPEARS OCCUPIED AND ALL PORTIONS APPEAR ACTIVE.

[Redacted]

K1

Approved For Release

~~TOP SECRET~~

CIA-RDP03-00140R000100010040-7

25X  
25X

MISSION 4031 17-24 AUGUST 1966

25X

VINNITSA EXPLOSIVES STORAGE

UR 4924N 02830E

10 NM NORTH OF VINNITSA.  
SECURED, RAIL-SERVED INSTALLATION CONTAINS 33 STORAGE  
BUILDINGS AND APPROXIMATELY 18 SUPPORT BUILDINGS.

[Redacted]

[Redacted]

K1

KAUNAS ARMY BARRACKS AIRFIELD NORTH AL 7 UR 5453N 02352E

IMMEDIATELY EAST OF KAUNAS AIRFIELD.  
INSTALLATION CONTAINS 3 BARRACKS-TYPE BUILDINGS, 2  
ADMINISTRATION BUILDINGS, 1 U-SHAPED VEHICLE STORAGE  
BUILDING, AND APPROXIMATELY 10 OTHER BUILDINGS.

OB -- 3 CARGO TRUCKS, 9 OTHER VEHICLES, 1 HOOK, AND 76  
HOUND (16 WITHOUT ROTORS).

[Redacted]

25X

K1

KAUNAS ARMY BARRACKS KIPRO AL 8 UR 5454N 02356E

NE OF THE CENTER OF KAUNAS.  
INSTALLATION CONTAINS 3 MULTISTORY BARRACKS, 2  
ADMINISTRATION BUILDINGS, 5 VEHICLE MAINTENANCE/STORAGE  
BUILDINGS, 1 LARGE PROBABLE VEHICLE/EQUIPMENT  
MAINTENANCE BUILDING, 5 STORAGE BUILDINGS, AND  
APPROXIMATELY 10 OTHER BUILDINGS.

OB -- 10 CARGO TRUCKS AND 25 OTHER VEHICLES.

NO EVIDENCE OF CW STORAGE IN THE AREA.

[Redacted]

25X

K1

KHOLMSK ARMY BARRACKS ARASAIKAWA UR 4703N 14205E

NO TANKS OBSERVED.

AREA APPEARS OCCUPIED AND ALL PORTIONS APPEAR ACTIVE.

[Redacted]

K1

[Redacted]

25X  
25X  
25X

K1

[Redacted]

TOP SECRET

[Redacted]

MISSION 4031 17-24 AUGUST 1966

CHISTOVODNOYE ARMY BARRACKS AL 1 UR 4701N 14219E

NO TANKS OBSERVED.

AREA APPEARS OCCUPIED AND ALL PORTIONS APPEAR ACTIVE.

[Redacted]

K1

KHOLMSK ARMY BARRACKS NORTH AL 1 UR 4703N 14204E

NO TANKS OBSERVED.

AREA APPEARS OCCUPIED AND ALL PORTIONS APPEAR ACTIVE.

[Redacted]

K1

PYATIRECHYE ARMY BARRACKS SOUTHWEST AL 1 UR 4700N 14215E

NO TANKS OBSERVED.

AREA APPEARS OCCUPIED AND ALL PORTIONS APPEAR ACTIVE.

[Redacted]

K1

KIROVOGRAD ARMY BARRACKS CENTRAL AL 1 UR 4830N 03215E

SCATTERED CLOUDS AND POOR INTERPRETABILITY PRECLUDE IDENTIFICATION OF THIS TARGET.

[Redacted]

K1

KIROVOGRAD ARMY BARRACKS KREML AL 2 UR 4829N 03215E

IDENTIFICATION ONLY.

[Redacted]

K1

KLINTSY ARMY BARRACKS UR 5244N 03214E

THIS INSTALLATION IS A VEHICLE REPAIR DEPOT AND DOES NOT APPEAR TO BE MILITARY. NO MILITARY VEHICLES, WEAPONS, OR EQUIPMENT OBSERVED.

25X

TOP SECRET

[Redacted]

[Redacted]

25X



25X  
25X

MISSION 4031 17-24 AUGUST 1966

KOMSOMOLETS EXPLOSIVES STORAGE

UR 4400N 04335E

NO NEW CONSTRUCTION, CHANGES IN FACILITIES, OR PREVIOUSLY UNREPORTED FEATURES OBSERVED.

NO VEHICLES, WEAPONS, OR EQUIPMENT OBSERVED.

KONOTOP TRAINING AREA BATURIN

UR 5118N 03252E

NO NEW CONSTRUCTION, CHANGES IN FACILITIES, OR PREVIOUSLY UNREPORTED FEATURES OBSERVED.

NO VEHICLES, WEAPONS, OR EQUIPMENT OBSERVED.

KOTOVSK BKS NE AL 1 & SSM TRAINING FAC

UR 4746N 02932E

ON THE NE EDGE OF KOTOVSK. INSTALLATION CONSISTS OF A BARRACKS AREA AND AN SSM LAUNCH FACILITY 0.8 NM NE. THE LAUNCH FACILITY CONSISTS OF 2 COMPLETED LAUNCH PADS WITH ACCOMPANYING LOOP ROADS, 1 LAUNCH PAD AND LOOP ROAD UNDER CONSTRUCTION, A MISSILE READY BUILDING, A CONTROL/SUPPORT BUILDING, A STRUCTURE IN THE WOODS SW OF 1 PAD, AND A BUILDING NEAR THE PAD UNDER CONSTRUCTION. ONE LAUNCH POSITION HAS BEEN PRESENT SINCE [REDACTED] A SECOND POSITION WAS VISIBLE ON [REDACTED] AND THE READY BUILDING WAS UNDER CONSTRUCTION ON [REDACTED]

THE BARRACKS AREA CONTAINS 3 ADMINISTRATION BUILDINGS, 10 MULTISTORY BARRACKS/ADMINISTRATION BUILDINGS, 7 MULTISTORY BARRACKS/QUARTERS BUILDINGS, 4 LARGE BUILDINGS, 1 COMMAND/CONTROL-TYPE BUILDING WITH END CUPOLA SIMILAR TO THOSE AT MANY MRBM/IRBM SITES, 1 LARGE DRIVE-THROUGH BUILDING, 1 MEDIUM DRIVE-THROUGH BUILDING, 1 LARGE BUILDING WITH SIDE BAYS, AT LEAST 6 GARAGES, 65 OTHER SUPPORT/MAINTENANCE BUILDINGS, 73 HOUSING UNITS, 1 BUILDING UNDER CONSTRUCTION, 2 OUTDOOR THEATERS, 2 ATHLETIC FIELDS, 2 OBSTACLE COURSES, AND 22

25X

25X

25X

K1

TOP SECRET

25X  
25X

MISSION 4031 17-24 AUGUST 1966

TENTS.

THE VEHICLE TRAINING AREA TO THE SOUTH CONTAINS 1 BUILDING, 5 SEMI-BURIED STRUCTURES, 1 MEDIUM TENT, 7 OTHER STRUCTURES, AND 35 TENT BASES.

SEPARATELY SECURED AREA NORTH OF BARRACKS AREA CONTAINS 14 STORAGE BUILDINGS AND 4 PROBABLE FA PIECES.

OB -- LAUNCH FACILITY -- 1 ERECTED SS-4 MISSILE, 2 MISSILE TRANSPORTERS (1 SS-4 AND 1 PROBABLE SS-5), 3 ERECTORS AND PRIME MOVERS (2 OF WHICH ARE PROBABLE SS-5 ERECTORS AND 1 SS-4 ERECTOR IN POSITION WITH THE ERECTED MISSILE), 2 OXIDIZER TRAILERS, 1 FUEL TRAILER, AND 4 OTHER VEHICLES.

AT BARRACKS AREA -- 3 CANVAS-COVERED PROBABLE TRANSPORTERS, 1 CHERRY PICKER, 5 FUEL/OXIDIZER TRAILERS, 150 OTHER VEHICLES/PIECES OF EQUIPMENT, AND 14 VEHICLES IN DRIVER-TRAINING AREA.

(SEE ATTACHMENT)

K1

[REDACTED]

25X

KURESSAARE ARMY BARRACKS AL 2

UR 5815N 02230E

[REDACTED]

EAST EDGE OF KURESSAARE. INSTALLATION CONSISTS OF A CIVILIAN BUS DEPOT AND A SAWMILL OR WOOD WORKING INDUSTRY. NO MILITARY ACTIVITY OBSERVED.

TWENTY BUSES, APPROXIMATELY 20 CARGO TRUCKS, AND NUMEROUS PIECES OF EQUIPMENT ARE OBSERVED.

K1

[REDACTED]

25X

LENINAKAN MILITARY TRAINING AREA

UR 4038N 04412E

[REDACTED]

NO NEW CONSTRUCTION, CHANGES IN FACILITIES, OR PREVIOUSLY UNREPORTED FEATURES OBSERVED.

NO VEHICLES, WEAPONS, OR EQUIPMENT OBSERVED.

K1

[REDACTED]

25X

[REDACTED]

TOP SECRET

25X

25X  
25X  
25X

K1

[Redacted]

Approved For Release 2005/11/11 : CIA-RDP03-00140R000100010040-7

TOP SECRET

[Redacted]

MISSION 4031 17-24 AUGUST 1966

[Redacted]

LEPEL ARMY BARRACKS NORTHEAST AL 5 UR 5453N 02843E

NO TANKS OBSERVED.

AREA APPEARS OCCUPIED AND ALL PORTIONS APPEAR ACTIVE.

[Redacted]

LEPEL ARMY BARRACKS ZAOZERYE AL 3 UR 5458N 02849E

NO TANKS OBSERVED.

AREA APPEARS OCCUPIED AND ALL PORTIONS APPEAR ACTIVE.

[Redacted]

LYUBOML ARMY BARRACKS AL 1 UR 5112N 02402E

SW OF LYUBOML.

INSTALLATION CONTAINS 8 BARRACKS, 1 ADMINISTRATION BUILDING, 7 VEHICLE STORAGE BUILDINGS, 1 VEHICLE MAINTENANCE BUILDING, 12 STORAGE BUILDINGS, 11 SUPPORT BUILDINGS, AND AN ATHLETIC FIELD.

OB -- 2 TANKS, 34 PROBABLE PMP PONTONS ON CARRIERS, 12 POWER BOATS, 1 PROBABLE K-61 AMPHIBIOUS VEHICLE, 50 CARGO TRUCKS, AND 9 OTHER VEHICLES.

[Redacted]

LYUBOML ARMY TRAINING AREA WEST UR 5113N 02355E

NO VEHICLES, WEAPONS, OR EQUIPMENT OBSERVED.

AREA APPEARS OCCUPIED AND ALL PORTIONS APPEAR ACTIVE.

[Redacted]

MINSK AMMUNITION DEPOT SOUTHEAST UR 5347N 02741E

NO NEW CONSTRUCTION, CHANGES IN FACILITIES, OR PREVIOUSLY UNREPORTED FEATURES OBSERVED.

NO VEHICLES, WEAPONS, OR EQUIPMENT OBSERVED.

K1

K1

25X

[Redacted]

[Redacted]

25X  
25X

K1

Approved For Release

~~TOP SECRET~~

A-RDP03-00140R000

00100010040-7

25X

25X

MISSION 4031 17-24 AUGUST 1966

[Redacted]

K1

[Redacted]

25X

MINSK ARMY BARRACKS URUCHYE AL 1

UR 5357N 02743E

OB -- 8 TANKS, 98 CARGO TRUCKS, 2 PROBABLE ASSAULT BRIDGES, AND 60 OTHER VEHICLES.

NO NEW CONSTRUCTION, CHANGES IN FACILITIES, OR PREVIOUSLY UNREPORTED FEATURES OBSERVED.

[Redacted]

[Redacted]

MINSK ORD DEPOT SE AND ARMY BKS SE AL 7

UR 5352N 02738E

FIFTY UNIDENTIFIED VEHICLES OBSERVED IN STORAGE AREA. NUMEROUS VEHICLES/PIECES OF EQUIPMENT ARE SCATTERED THROUGHOUT THE AREA.

NO NEW CONSTRUCTION, CHANGES IN FACILITIES, OR PREVIOUSLY UNREPORTED FEATURES OBSERVED.

[Redacted]

K1

25X

MURMANSK ARMY BKS NAGORNOVSKIY AL 5

UR 6854N 03306E

IDENTIFICATION ONLY.

[Redacted]

[Redacted]

K1

NEMAN ARMY BARRACKS AL 2

UR 5503N 02159E

THIS INSTALLATION IS REPORTED UNDER

[Redacted]

[Redacted]

25X

K1

NEMAN ARMY BARRACKS AL 4

UR 5500N 02202E

NO MILITARY INSTALLATION OBSERVED AT REFERENCED COORDINATES. AREA CONSISTS OF CIVILIAN HOUSING AND A SMALL NON-MILITARY STORAGE AREA.

[Redacted]

K1

[Redacted]

K1

Approved For Release

~~TOP SECRET~~

[Redacted]

CIA-RDP03-00140R000100010040-7

25X  
25X  
25X

MISSION 4031 17-24 AUGUST 1966

NOVOGRAD-VOLYNSKIY ARMY BARRACKS AL 2 UR 5035N 02739E

[Redacted]

OB -- APPROXIMATELY 75 PROBABLE CARGO TRUCKS, APPROXIMATELY 100 PROBABLE LOWBED TRAILERS, 11 POSSIBLE TRACKED VEHICLES, 1 POSSIBLE TRUCK-MOUNTED CRANE, AND 40 OTHER VEHICLES/PIECES OF EQUIPMENT.

NO NEW CONSTRUCTION, CHANGES IN FACILITIES, OR PREVIOUSLY UNREPORTED FEATURES OBSERVED.

[Redacted]

25X

NOVOGRAD-VOLYNSKIY ARMY BARRACKS AL 1 UR 5036N 02736E

[Redacted]

OB -- 5 BEAGLE, 5 FITTER, 2 FLASHLIGHT/FIREBAR, 1 FAGOT/FRESCO, AND 1 SMALL STRAIGHT-WING.

AIRCRAFT APPEAR TO BE A STATIC DISPLAY.

AREA APPEARS OCCUPIED AND ALL PORTIONS APPEAR ACTIVE.

[Redacted]

25X

NOVOGRAD-VOLYNSKIY TRAINING AREA UR 5039N 02735E

[Redacted]

OB -- 12 TANKS.

AREA APPEARS OCCUPIED AND ALL PORTIONS APPEAR ACTIVE.

[Redacted]

25X

OKTEMBERYAN ARMY BARRACKS NOR ARMAVIR UR 4007N 04357E

[Redacted]

4.5 NM WSW OF OKTEMBERYAN. INSTALLATION CONTAINS 8 BARRACKS, 9 QUARTERS, 5 ADMINISTRATION BUILDINGS, 13 STORAGE BUILDINGS, 5 SUPPORT BUILDINGS, AND NUMEROUS TENT BASES.

OB -- 6 TANKS/SP GUNS AND 7 CARGO TRUCKS.

[Redacted]

K1

K1

K1

Approved For Release

TOP SECRET CIA-RDP03-00140R000100010040-7

MISSION 4031 17-24 AUGUST 1966

POLOTSK ARMY BARRACKS

UR 5530N 02846E

NO TANKS OBSERVED.

AREA APPEARS OCCUPIED AND ALL PORTIONS APPEAR ACTIVE.

[Redacted]

POLOTSK ARMY BARRACKS NORTH AL 3

UR 5532N 02846E

NO TANKS OBSERVED.

AREA APPEARS OCCUPIED AND ALL PORTIONS APPEAR ACTIVE.

[Redacted]

POLOTSK STORAGE AREA

UR 5530N 02849E

NO VEHICLES, WEAPONS, OR EQUIPMENT OBSERVED.

AREA APPEARS OCCUPIED AND ALL PORTIONS APPEAR ACTIVE.

[Redacted]

PORECHYE MANEUVER AREA GRODNO

UR 5351N 02355E

OB -- 10 POSSIBLE TANKS, 22 CARGO TRUCKS (17 WITH UNIDENTIFIED EQUIPMENT IN TOW), AND 100 OTHER VEHICLES.

ALL AREAS OBSERVED EXCEPT THE EASTERMOST SECTION.

NO NEW CONSTRUCTION, CHANGES IN FACILITIES, OR PREVIOUSLY UNREPORTED FEATURES OBSERVED.

[Redacted]

PRILUKI AMMUNITION DEPOT ICHNYA SSW

UR 5047N 03219E

IDENTIFICATION ONLY.

[Redacted]

K1

K1

K1

K1

K1

K1

Approved For Release

TOP SECRET CIA-RDP03-00140R000100010040-7

MISSION 4031 17-24 AUGUST 1966

25X

25X

25X

PRILUKI AMMUNITION STORAGE

UR 5033N 03227E

NO NEW CONSTRUCTION, CHANGES IN FACILITIES, OR PREVIOUSLY UNREPORTED FEATURES OBSERVED.

NO VEHICLES, WEAPONS, OR EQUIPMENT OBSERVED.

[Redacted]

[Redacted]

K1

PRISHIB BARRACKS & TRAINING AREA

UR 3907N 04834E

ON NW EDGE OF PRISHIB. SECURED INSTALLATION CONTAINS 2 E-SHAPED BARRACKS, 4 PROBABLE BARRACKS, 1 T-SHAPED ADMINISTRATION BUILDING, 1 VEHICLE MAINTENANCE/STORAGE BUILDING, 4 VEHICLE STORAGE BUILDINGS, APPROXIMATELY 25 STORAGE/SUPPORT BUILDINGS, 3 BUILDINGS PROBABLY UNDER CONSTRUCTION, 18 TENTS, AND AN ATHLETIC FIELD.

A DIRECT ACCESS ROAD LEADS FROM THE BARRACKS AREA TO A SMALL SOD AIRFIELD LOCATED APPROXIMATELY 0.5 NM NE. THE AIRFIELD CONTAINS 8 HELICOPTER PADS WITH 4 HOUND.

A TRAINING AREA IS 2 NM EAST OF THE BARRACKS AREA AND CONTAINS A FLAT-TRAJECTORY RANGE WITH 2 APC TRAINING LOOPS AND 11 RANGE CONTROL BUILDINGS.

NO VEHICLES, WEAPONS, OR EQUIPMENT OBSERVED.

[Redacted]

25X

RATNO PROBABLE MILITARY INSTALLATION

UR 5140N 02432E

OB -- APPROXIMATELY 35 VEHICLES.

NO NEW CONSTRUCTION, CHANGES IN FACILITIES, OR PREVIOUSLY UNREPORTED FEATURES OBSERVED.

[Redacted]

[Redacted]

K1

RAZDOLNOYE ARMY BARRACKS ALEKSEYEVKA AL 2 UR 4333N 13156E

OB -- 12 CARGO TRUCKS.

NO NEW CONSTRUCTION, CHANGES IN FACILITIES, OR PREVIOUSLY UNREPORTED FEATURES OBSERVED.

25X

25X

[Redacted]

K1

Approved For Release 2005/05/10 : CIA-RDP03-00140R000100010040-7  
TOP SECRET  
MISSION 4031 17-24 AUGUST 1966

K1

[Redacted]

RUSTAVI MILITARY TRAINING AREA

UR 4124N 04514E

OB -- AT LEAST 30 TANKS/SP GUNS, AT LEAST 25 POSSIBLE TRACKED VEHICLES, AT LEAST 190 CARGO TRUCKS, 20 UTILITY TRUCKS, AND 7 PIECES OF EQUIPMENT.

FACILITIES INCLUDE 14 PROBABLE BARRACKS, 7 T-SHAPED SUPPORT BUILDINGS (1 UNDER CONSTRUCTION), 1 POSSIBLE ADMINISTRATION BUILDING, 3 VEHICLE SHEDS, 3 MAINTENANCE BUILDINGS, 22 ASSOCIATED BUILDINGS, 1 LARGE AND AT LEAST 150 SMALL TENTS, A MOTOR POOL, 2 TANKS/SP GUN DRIVING/FIRING RANGES, AND A MANEUVER AREA.

[Redacted]

SAMARKAND ARMY BARRACKS DZHUMUSHKABAD

UR 3941N 06653E

OB -- 35 TANKS, 5 KMM TRUCK-MOUNTED BRIDGES, 6 K-61 AMPHIBIOUS VEHICLES, 1 MTU TANK-LAUNCHED BRIDGE, APPROXIMATELY 100 CARGO TRUCKS, 1 PROBABLE TRUCK-MOUNTED CRANE, 1 CARGO TRUCK WITH LOWBED TRAILER, AND APPROXIMATELY 25 OTHER VEHICLES/PIECES OF EQUIPMENT. FORTY-EIGHT TANKS ARE OBSERVED IN THE TRAINING AREA.

NO NEW CONSTRUCTION, CHANGES IN FACILITIES, OR PREVIOUSLY UNREPORTED FEATURES OBSERVED.

[Redacted]

SHAGLASER TANK FIRING RANGE

UR 3852N 04840E

4 NM WEST OF SHAGLASER. TRAINING AREA CONSISTS OF A TANK/ASSAULT-GUN FIRING RANGE WITH 2 TANK LANES AND 4 MOVING TARGET RUNS. A SMALL PROBABLE FLAT-TRAJECTORY RANGE, A RANGE CONTROL BUILDING, AND 4 OTHER BUILDINGS.

NO VEHICLES, WEAPONS, OR EQUIPMENT OBSERVED.

[Redacted]

K1

K1



25X

K1

[Redacted]

Approved For Release 2005/11/17 : CIA-RDP03-00140R000100010040-7

TOP SECRET

[Redacted]

[Redacted]

25X

25X

MISSION 4031 17-24 AUGUST 1966

SHIRLOVAYA GORA ARMY BARRACKS RAZ 79 UR 5031N 11623E

[Redacted]

OB -- 10 POSSIBLE TANKS OBSERVED IN MOTOR POOL AREA.

EXTENSIVE TRACK ACTIVITY OBSERVED THROUGHOUT AREA AND ON ADJACENT TANK/ASSAULT GUN FIRING RANGE.

NO NEW CONSTRUCTION, CHANGES IN FACILITIES, OR PREVIOUSLY UNREPORTED FEATURES OBSERVED.

[Redacted]

25X

JASZBERENY ARMY BARRACKS DOSZA GYORGY 1 HU 4729N 01953E

[Redacted]

NO TANKS OBSERVED.

NO VEHICLES, WEAPONS, OR EQUIPMENT OBSERVED.

AREA APPEARS OCCUPIED AND ALL PORTIONS APPEAR ACTIVE.

[Redacted]

25X

SLUTSK ARMY BARRACKS CENTRAL UR 5301N 02733E

[Redacted]

NO TANKS OBSERVED.

AREA APPEARS OCCUPIED AND ALL PORTIONS APPEAR ACTIVE.

[Redacted]

K1

SLUTSK ARMY BARRACKS SOUTHWEST UR 5300N 02732E

OB -- 6 PROBABLE TANKS/SP GUNS, 8 FA PIECES (PROBABLE HOWITZERS), 46 PROBABLE BRDM APC, 64 PRIME MOVERS, AND 14 CARGO TRUCKS.

NO NEW CONSTRUCTION, CHANGES IN FACILITIES, OR PREVIOUSLY UNREPORTED FEATURES OBSERVED.

AREA APPEARS OCCUPIED AND ALL PORTIONS APPEAR ACTIVE.

[Redacted]

K1

[Redacted]

[Redacted]

25X

25X

25X  
25X  
25X

K1

[Redacted]

Approved For Release 2005/05/04 : CIA-RDP03-00140R000100010040-7

~~TOP SECRET~~

[Redacted]

MISSION 4031 17-24 AUGUST 1966

SMOLENSK ARMY BARRACKS SOUTHWEST

UR 5446N 03201E

OB -- 6 VAN TRUCKS AND 5 OTHER VEHICLES/PIECES OF EQUIPMENT.

AREA APPEARS OCCUPIED AND ALL PORTIONS APPEAR ACTIVE.

[Redacted]

K1

NEMAN ARMY BARRACKS AL 5

UR 5502N 02201E

OB -- 26 GSP AMPHIBIOUS FERRIES, 30 K-61/ZIL-485 AMPHIBIOUS VEHICLES, AND 35 CARGO TRUCKS.

AREA APPEARS OCCUPIED AND ALL PORTIONS APPEAR ACTIVE.

[Redacted]

K1

NEMAN ARMY BARRACKS AL 1

UR 5502N 02200E

2 NM NNW OF NEMAN.  
INSTALLATION CONTAINS 10 BARRACKS, 1 ADMINISTRATION BUILDING, 15 STORAGE BUILDINGS, 3 VEHICLE STORAGE BUILDINGS, AND 10 SUPPORT BUILDINGS.

OB -- 15 PROBABLE FA PIECES, 6 TRACKED VEHICLES, AND 15 CARGO TRUCKS.

[Redacted]

K1

TAURAGE ARMY BARRACKS AL 2

UR 5515N 02216E

OB -- [Redacted] 4 VEHICLES.

AREA APPEARS OCCUPIED AND ALL PORTIONS APPEAR ACTIVE.

[Redacted]

K1

SOVETSK ARMY BARRACKS WEST AL 2

UR 5504N 02152E

IN CENTER OF SOVETSK.  
INSTALLATION CONTAINS 15 BARRACKS, 4 PROBABLE BARRACKS, 1 L-SHAPED ADMINISTRATION BUILDING, 1 OTHER ADMINISTRATION BUILDING, 30 STORAGE BUILDINGS, 1

~~TOP SECRET~~

[Redacted]

[Redacted]

25X  
25X

K1

Approved For Release

TOP SECRET

A-RDP03-00140R

000100010040-7

MISSION 4031 17-24 AUGUST 1966

T-SHAPED VEHICLE MAINTENANCE/STORAGE BUILDING, 8 OTHER VEHICLE MAINTENANCE/STORAGE BUILDINGS, 6 VEHICLE STORAGE SHEDS, AND AT LEAST 25 SUPPORT BUILDINGS.

OB -- 20 CARGO TRUCKS AND 20 VEHICLES/PIECES OF EQUIPMENT.

[Redacted]

SPITAK EXPLOSIVES STORAGE

UR 4049N 04414E

NO NEW CONSTRUCTION, CHANGES IN FACILITIES, OR PREVIOUSLY UNREPORTED FEATURES OBSERVED.

NO VEHICLES, WEAPONS, OR EQUIPMENT OBSERVED.

[Redacted]

TIRASPOL ARMY BARRACKS WEST AL 1

UR 4650N 02935E

OB -- 3 POSSIBLE TANKS/SP GUNS, 41 PROBABLE FA PIECES, 10 PROBABLE TRACKED VEHICLES, 15 CARGO TRUCKS, APPROXIMATELY 80 CANVAS-COVERED VEHICLES, AND APPROXIMATELY 160 OTHER VEHICLES/PIECES OF EQUIPMENT.

AREA APPEARS OCCUPIED AND ALL PORTIONS APPEAR ACTIVE.

[Redacted]

TOTSKOYE ARMY BARRACKS NORTHEAST AL 2

UR 5232N 05249E

OB -- 2 POSSIBLE FROG RESUPPLY TRANSPORT TRAILERS, 43 FA PIECES, 10 PROBABLE TRACKED VEHICLES, 46 CARGO TRUCKS, 75 UTILITY TRUCKS, 144 OTHER VEHICLES, AND 27 VEHICLES/PIECES OF EQUIPMENT.

NO NEW CONSTRUCTION, CHANGES IN FACILITIES, OR PREVIOUSLY UNREPORTED FEATURES OBSERVED.

[Redacted]

VINNITSA ARMY BARRACKS NORTH AL 1

UR 4915N 02829E

NORTH EDGE OF VINNITSA. SECURED INSTALLATION CONTAINS 9 BARRACKS, 2

[Large vertical redacted area]

MISSION 4031 17-24 AUGUST 1966

ADMINISTRATION BUILDINGS, 5 VEHICLE STORAGE BUILDINGS,  
8 STORAGE BUILDINGS, 10 SUPPORT BUILDINGS, AND AN  
ATHLETIC FIELD.

OB -- 30 CARGO TRUCKS, 3 UAZ-69 UTILITY TRUCKS, AND 1  
BUS.

[REDACTED]

YEMILCHINO ARMY BARRACKS AL 1

UR 5052N 02748E

OB -- 5 CARGO TRUCKS AND 8 LOWBED TRAILERS.

NO NEW CONSTRUCTION, CHANGES IN FACILITIES, OR  
PREVIOUSLY UNREPORTED FEATURES OBSERVED.

[REDACTED]

ZOLOTONOSHA ARMY BARRACKS AL 1

UR 4940N 03202E

AREA DOES NOT APPEAR MILITARY. INSTALLATION AT  
REFERENCED COORDINATES IS A POSSIBLE INDUSTRIAL STORAGE  
AREA.

NO NEW CONSTRUCTION, CHANGES IN FACILITIES, OR  
PREVIOUSLY UNREPORTED FEATURES OBSERVED.

[REDACTED]

KISKUNFELEGYHAZA ARMY BARRACKS 1/2

HU 4641N 01949E

OB -- 95 CARGO TRUCKS.

AREA APPEARS OCCUPIED AND ALL PORTIONS APPEAR ACTIVE.

[REDACTED]

CHIU-WENG-YUAN ARMY BARRACKS SOUTHWEST

CH 2419N 11343E

7 NM SW OF CHIU-WENG-YUAN.

EASTERMOST AREA CONTAINS 37 QUONSET-TYPE BUILDINGS, 1  
EXPLOSIVE STORAGE BUILDING, 2 BARRACKS/ADMINISTRATION  
BUILDINGS, AND 2 SUPPORT BUILDINGS.

K1

Approved For Release

TOP SECRET

[Redacted]

2005/07/17 CIA-RDP03-00140R000100010040-7

25X  
25X

MISSION 4031 17-24 AUGUST 1966

[Redacted]

SOUTHERNMOST AREA CONTAINS 21 STORAGE BUILDINGS, 1 BARRACKS, 1 MESSHALL, AND 1 SUPPORT BUILDING.

OBLIQUITY PRECLUDES INTERPRETATION OF WESTERNMOST AREA.

CENTRAL AREA CONTAINS 6 STORAGE BUILDINGS, 2 BARRACKS, AND 3 SUPPORT BUILDINGS.

DEGREE OF ACTIVITY CANNOT BE DETERMINED. NO EVIDENCE OF TROOP OR SUPPLY BUILDUP. AREAS ARE SECURED BUT NO DEFENSES ARE OBSERVED.

NO VEHICLES, WEAPONS, OR EQUIPMENT OBSERVED.

[Redacted]

K1

25X

CHIU-WENG-YUAN ARMY BARRACKS NORTHEAST CH 2423N 11351E

OB -- 4 CARGO TRUCKS.

NO SIGNIFICANT CHANGE OBSERVED.

[Redacted]

K1

HUAI-AN ARMY BARRACKS AREA CH 4040N 11424E

ROADS APPEAR WELL TRAVELED.

NO NEW CONSTRUCTION, CHANGES IN FACILITIES, OR PREVIOUSLY UNREPORTED FEATURES OBSERVED.

NO VEHICLES, WEAPONS, OR EQUIPMENT OBSERVED.

[Redacted]

K1

SHIH-CHIA-CHUANG BARRACKS AREA CH 3805N 11430E

NO NEW CONSTRUCTION, CHANGES IN FACILITIES, OR PREVIOUSLY UNREPORTED FEATURES OBSERVED.

NO VEHICLES, WEAPONS, OR EQUIPMENT OBSERVED.

AREA APPEARS OCCUPIED AND ALL PORTIONS APPEAR ACTIVE.

[Redacted]

K1

[Redacted]

[Redacted]

25X  
25X

TOP SECRET

25X  
25X

MISSION 4031 17-24 AUGUST 1966

25X

SHIH-CHIA-CHUANG ARMY BKS & TRNG CEN W CH 3802N 11425E

NO NEW CONSTRUCTION, CHANGES IN FACILITIES, OR PREVIOUSLY UNREPORTED FEATURES OBSERVED.

NO VEHICLES, WEAPONS, OR EQUIPMENT OBSERVED.

AREA APPEARS OCCUPIED AND ALL PORTIONS APPEAR ACTIVE.

[Redacted]

25X

NEI-CHIU BARRACKS AREA CH 3722N 11432E

OB -- 3 CARGO TRUCKS.

NO NEW CONSTRUCTION, CHANGES IN FACILITIES, OR PREVIOUSLY UNREPORTED FEATURES OBSERVED.

[Redacted]

25X

HSIN-YANG MILITARY INSTALLATION CH 3206N 11405E

OB -- 10 AAA PIECES, 4 CARGO TRUCKS, AND NUMEROUS VEHICLES/PIECES OF EQUIPMENT.

NO NEW CONSTRUCTION, CHANGES IN FACILITIES, OR PREVIOUSLY UNREPORTED FEATURES OBSERVED.

[Redacted]

25X

LUNG-TANG ARMY BARRACKS TIEN-TUN-YUAN CH 1923N 11013E

OB -- [Redacted] -- 40 VEHICLES/PIECES OF EQUIPMENT IN MOTOR POOL.

NO NEW CONSTRUCTION, CHANGES IN FACILITIES, OR PREVIOUSLY UNREPORTED FEATURES OBSERVED.

[Redacted]

25X

TOP SECRET

25X

~~TOP SECRET~~

MISSION 4031 17-24 AUGUST 1966

HAN-TAN MILITARY AREAS

CH 3637N 11426E

OB -- 12 POSSIBLE CARGO TRUCKS AND 10 FA PIECES.

CHANGES TO FACILITIES COMPRISE 4 BUILDINGS UNDER CONSTRUCTION.

CHU-HSIEN TANK TRAINING AREA

CH 3216N 11818E BONUS 1

2.3 NM SSE OF CHU-HSIEN. SECURED AREA CONTAINS 18 BARRACKS, 1 ADMINISTRATION BUILDING, 17 STORAGE/SUPPORT BUILDINGS AND A TANK/SP GUN STORAGE AND MAINTENANCE AREA CONTAINING 6 VEHICLE MAINTENANCE BUILDINGS, 7 VEHICLE SHEDS AND 10 SUPPORT BUILDINGS. A TANK DRIVER-TRAINING RANGE IS LOCATED ADJACENT TO THE WEST. (AREA WAS PREVIOUSLY REPORTED ON

[REDACTED] AS PART OF CHU-HSIEN BARRACKS AND HQ 180TH INF DIV, [REDACTED]

OB -- 8 TANKS (7 CANVAS COVERED AND 1 ON DRIVER-TRAINING RANGE) AND 4 SU-76 SP GUNS (3 CANVAS COVERED AND 1 ON DRIVER-TRAINING RANGE).

~~TOP SECRET~~

**Index**



TOP SECRET

25X  
25X

MISSION 4031 17-24 AUGUST 1966

INDEX OF TARGETS

COMOR	INSTALLATION NAME	CTY	COORDINATES	OAK	
[REDACTED]	PLESETSK ICBM COMPLEX	UR	6254N 04038E	4	
	PLESETSK ICBM PROB LAUNCH SITE 11	UR	6257N 04126E	4	
	PLESETSK ICBM PROB LAUNCH SITE 12	UR	6258N 04132E	4	
	PLESETSK ICBM PROB LAUNCH SITE 14	UR	6258N 04133E	4	
	PLESETSK ICBM PROB LAUNCH SITE 15	UR	6258N 04124E	4	
	YURYA ICBM COMPLEX	UR	5904N 04917E	2	
	YURYA ICBM LAUNCH SITE 1	UR	5909N 04939E	2	
	YURYA ICBM LAUNCH SITE 3	UR	5913N 04925E	2	
	YURYA ICBM LAUNCH SITE 4	UR	5916N 04922E	2	
	YURYA ICBM LAUNCH SITE 5	UR	5922N 04917E	2	
	YURYA ICBM LAUNCH SITE 8	UR	5911N 04946E	2	
	YURYA ICBM LAUNCH SITE 11	UR	5920N 04925E	2	
	[REDACTED]				
	VERKHNYAYA SALDA ICBM COMPLEX	UR	5802N 06024E	1	
	TYURATAM MISSILE TEST CENTER	UR	4538N 06317E	3	
	TYURATAM LAUNCH COMPLEX F	UR	4601N 06305E	3	
	TYURATAM LAUNCH COMPLEX G	UR	4604N 06255E	3	
	TYURATAM LAUNCH GROUP K (SITE K1-K2)	UR	4601N 06303E	3	
	TYURATAM LAUNCH GROUP K (SITE K3)	UR	4604N 06256E	3	
	TYURATAM LAUNCH GROUP L (SITE L1)	UR	4603N 06259E	3	
TYURATAM LAUNCH GROUP L (SITE L2)	UR	4606N 06300E	3		
TYURATAM LAUNCH GROUP L (SITE L3)	UR	4604N 06305E	3		
TYURATAM LAUNCH GROUP L (SITE L4)	UR	4601N 06303E	3		
TYURATAM LAUNCH GROUP L (SITE L5)	UR	4559N 06257E	3		
TYURATAM LAUNCH GROUP L (SITE L6)	UR	4601N 06253E	3		
TYURATAM LAUNCH GROUP L (SITE L7)	UR	4605N 06255E	3		
TYURATAM LAUNCH GROUP L (SITE L8)	UR	4601N 06307E	3		
TYURATAM LAUNCH GROUP L (SITE L9)	UR	4558N 06306E	3		
TYURATAM LAUNCH GROUP L (SITE L10)	UR	4557N 06301E	3		
TYURATAM LAUNCH GROUP M (SITES M1,M2)	UR	4603N 06302E	3		
TYURATAM LAUNCH GROUP M (SITE M3)	UR	4602N 06306E	3		
TYURATAM LAUNCH GROUP N (SITE N1)	UR	4602N 06303E	3		
TYURATAM LAUNCH GROUP N (SITE N2-N3)	UR	4604N 06257E	3		
YOSHKAR-OLA ICBM COMPLEX	UR	5633N 04801E	1		
YOSHKAR-OLA ICBM LAUNCH SITE 2	UR	5634N 04817E	1		
YOSHKAR-OLA ICBM LAUNCH SITE 3	UR	5631N 04827E	1		
YOSHKAR-OLA ICBM LAUNCH SITE 4	UR	5630N 04819E	1		
YOSHKAR-OLA ICBM LAUNCH SITE 5	UR	5633N 04812E	1		
YOSHKAR-OLA ICBM LAUNCH SITE 6	UR	5636N 04828E	1		
SVOBODNYY ICBM COMPLEX	UR	5146N 12806E	1		
SVOBODNYY ICBM COMPLEX	UR	5146N 12806E	2		
SVOBODNYY ICBM LAUNCH SITE 3	UR	5154N 12809E	1		
SVOBODNYY ICBM LAUNCH SITE 4	UR	5158N 12806E	1		
SVOBODNYY ICBM LAUNCH SITE 6	UR	5143N 12759E	1		
SVOBODNYY ICBM LAUNCH SITE 7	UR	5137N 12757E	1		

TOP SECRET

25X

MISSION 4031 17-24 AUGUST 1966

SVOBODNYY ICBM LAUNCH SITE 8	UR 5202N 12805E 1
SVOBODNYY ICBM LAUNCH SITE 9	UR 5127N 12801E 1
SVOBODNYY ICBM LAUNCH SITE 10	UR 5147N 12809E 1
SVOBODNYY ICBM LAUNCH SITE 11	UR 5153N 12810E 1
SVOBODNYY ICBM LAUNCH SITE 12	UR 5148N 12803E 1
SVOBODNYY ICBM LAUNCH SITE 14	UR 5150N 12808E 1
SVOBODNYY ICBM LAUNCH SITE 16	UR 5151N 12802E 1
SVOBODNYY ICBM LAUNCH SITE 17	UR 5154N 12759E 1
SVOBODNYY ICBM LAUNCH SITE 18	UR 5143N 12756E 1
SVOBODNYY ICBM LAUNCH SITE 21	UR 5157N 12759E 1
SVOBODNYY ICBM LAUNCH SITE 22	UR 5159N 12802E 1
SVOBODNYY ICBM LAUNCH SITE 24	UR 5130N 12758E 1
SVOBODNYY ICBM LAUNCH SITE 25	UR 5127N 12756E 1
SVOBODNYY ICBM POSS LAUNCH SITE 28	UR 5123N 12802E 1

DROVYANAYA ICBM COMPLEX	UR 5131N 11300E 2
DROVYANAYA ICBM LAUNCH SITE 1	UR 5125N 11300E 2
DROVYANAYA ICBM LAUNCH SITE 2	UR 5125N 11304E 2
DROVYANAYA ICBM LAUNCH SITE 3	UR 5120N 11301E 2
DROVYANAYA ICBM LAUNCH SITE 4	UR 5127N 11303E 2
DROVYANAYA ICBM LAUNCH SITE 6	UR 5120N 11254E 2
DROVYANAYA ICBM LAUNCH SITE 7	UR 5138N 11305E 2
DROVYANAYA ICBM LAUNCH SITE 8	UR 5134N 11304E 2
DROVYANAYA ICBM LAUNCH SITE 9	UR 5136N 11302E 2
DROVYANAYA ICBM LAUNCH SITE 10	UR 5133N 11307E 2
DROVYANAYA ICBM LAUNCH SITE 11	UR 5136N 11307E 2
DROVYANAYA ICBM LAUNCH SITE 12	UR 5129N 11300E 2
DROVYANAYA ICBM LAUNCH SITE 13	UR 5131N 11304E 2
DROVYANAYA ICBM LAUNCH SITE 14	UR 5129N 11306E 2
DROVYANAYA ICBM LAUNCH SITE 15	UR 5126N 11302E 2
DROVYANAYA ICBM LAUNCH SITE 16	UR 5135N 11312E 2
DROVYANAYA ICBM LAUNCH SITE 18	UR 5131N 11300E 2
DROVYANAYA ICBM LAUNCH SITE 19	UR 5121N 11251E 2
DROVYANAYA ICBM LAUNCH SITE 20	UR 5122N 11257E 2
DROVYANAYA ICBM LAUNCH SITE 21	UR 5120N 11304E 2
DROVYANAYA ICBM LAUNCH SITE 22	UR 5122N 11302E 2
DROVYANAYA ICBM LAUNCH SITE 23	UR 5125N 11309E 2
DROVYANAYA ICBM LAUNCH SITE 24	UR 5123N 11306E 2
DROVYANAYA ICBM LAUNCH SITE 25	UR 5118N 11257E 2
DROVYANAYA ICBM LAUNCH SITE 28	UR 5124N 11252E 2
DROVYANAYA ICBM LAUNCH SITE 41	UR 5130N 11302E 2
DROVYANAYA ICBM COMPLEX SUPPORT FACILITY	UR 5131N 11300E 2
DROVYANAYA ICBM RAIL-TO-ROAD TSFR POINT	UR 5130N 11302E 2
KOSTROMA ICBM COMPLEX	UR 5746N 04101E 2
KOSTROMA ICBM LAUNCH SITE 1	UR 5801N 04122E 2
KOSTROMA ICBM LAUNCH SITE 2	UR 5802N 04106E 2
KOSTROMA ICBM LAUNCH SITE 3	UR 5758N 04109E 2
KOSTROMA ICBM LAUNCH SITE 4	UR 5805N 04139E 2
ITATKA ICBM COMPLEX	UR 5650N 08535E 1

MISSION 4031 17-24 AUGUST 1966

ITATKA ICBM LAUNCH SITE 1	UR 5658N 08531E 1
ITATKA ICBM LAUNCH SITE 2	UR 5700N 08539E 1
ITATKA ICBM LAUNCH SITE 3	UR 5654N 08539E 1
ITATKA ICBM RAIL-TO-ROAD TRANSFER POINT	UR 5651N 08535E 1
OMSK ICBM COMPLEX	UR 5504N 07331E 1
OMSK ICBM LAUNCH SITE 1	UR 5509N 07337E 1
PERM ICBM COMPLEX	UR 5742N 05619E 1
TEYKOVO ICBM COMPLEX	UR 5652N 04034E 1
YEDROVO ICBM COMPLEX	UR 5751N 03340E 1
YEDROVO ICBM LAUNCH SITE 2	UR 5748N 03335E 1
YEDROVO ICBM LAUNCH SITE 3	UR 5752N 03327E 1
YEDROVO ICBM LAUNCH SITE 4	UR 5748N 03328E 1
YEDROVO ICBM LAUNCH SITE 10	UR 5748N 03331E 1
YEDROVO ICBM LAUNCH SITE 11	UR 5751N 03336E 1
YEDROVO ICBM LAUNCH SITE 12	UR 5748N 03340E 1
YEDROVO ICBM LAUNCH SITE 13	UR 5754N 03328E 1
YEDROVO ICBM LAUNCH SITE 14	UR 5750N 03330E 1
YEDROVO ICBM PROB LAUNCH SITE 17	UR 5753N 03344E 1
YEDROVO ICBM PROB LAUNCH SITE 18	UR 5756N 03346E 1

UZHUR ICBM COMPLEX	UR 5517N 08949E 1
UZHUR ICBM COMPLEX	UR 5517N 08949E 3
UZHUR ICBM LAUNCH SITE 1	UR 5520N 08943E 1
UZHUR ICBM LAUNCH SITE 2	UR 5518N 08938E 1
UZHUR ICBM LAUNCH SITE 6	UR 5525N 08939E 1
UZHUR ICBM LAUNCH SITE 12	UR 5507N 08937E 1
UZHUR ICBM LAUNCH SITE 13	UR 5512N 08941E 1
UZHUR ICBM LAUNCH SITE 18	UR 5457N 08940E 1
UZHUR ICBM LAUNCH SITE 19	UR 5516N 08944E 1
UZHUR ICBM COMPLEX SUPPORT FACILITY	UR 5517N 08949E 1
UZHUR ICBM RAIL-TO-ROAD TRANSFER POINT	UR 5516N 08944E 1
OLOVYANNAYA ICBM COMPLEX	UR 5049N 11550E 1
OLOVYANNAYA ICBM LAUNCH SITE 1	UR 5054N 11548E 3
OLOVYANNAYA ICBM LAUNCH SITE 3	UR 5101N 11558E 3
OLOVYANNAYA ICBM LAUNCH SITE 9	UR 5103N 11559E 3
OLOVYANNAYA ICBM LAUNCH SITE 10	UR 5105N 11559E 3
OLOVYANNAYA ICBM LAUNCH SITE 14	UR 5100N 11601E 3
OLOVYANNAYA ICBM LAUNCH SITE 17	UR 5056N 11558E 3
OLOVYANNAYA ICBM LAUNCH SITE 18	UR 5055N 11552E 3
OLOVYANNAYA ICBM LAUNCH SITE 19	UR 5053N 11556E 3
OLOVYANNAYA ICBM LAUNCH SITE 20	UR 5059N 11554E 3
OLOVYANNAYA ICBM LAUNCH SITE 21	UR 5057N 11549E 3
OLOVYANNAYA ICBM LAUNCH SITE 22	UR 5100N 11547E 3
OLOVYANNAYA ICBM LAUNCH SITE 23	UR 5101N 11551E 3
OLOVYANNAYA ICBM LAUNCH SITE 24	UR 5051N 11551E 3
OLOVYANNAYA ICBM LAUNCH SITE 25	UR 5043N 11544E 3
OLOVYANNAYA ICBM LAUNCH SITE 27	UR 5047N 11545E 3
OLOVYANNAYA ICBM LAUNCH SITE 28	UR 5045N 11549E 3
OLOVYANNAYA ICBM LAUNCH SITE 29	UR 5041N 11550E 3

MISSION 4031 17-24 AUGUST 1966

OLOVYANNAYA ICBM LAUNCH SITE 32	UR 5039N 11549E 3
OLOVYANNAYA ICBM LAUNCH SITE 35	UR 5050N 11556E 3
OLOVYANNAYA ICBM LAUNCH SITE 36	UR 5048N 11557E 3
OLOVYANNAYA ICBM LAUNCH SITE 37	UR 5047N 11554E 3
OLOVYANNAYA ICBM LAUNCH SITE 38	UR 5049N 11551E 3
OLOVYANNAYA ICBM LAUNCH SITE 45	UR 5040N 11554E 3
OLOVYANNAYA ICBM LAUNCH SITE 51	UR 5042N 11557E 3
OLOVYANNAYA ICBM LAUNCH SITE 61	UR 5037N 11553E 3
OLOVYANNAYA ICBM LAUNCH SITE 63	UR 5112N 11600E 3
OLOVYANNAYA ICBM LAUNCH SITE 64	UR 5034N 11553E 3
OLOVYANNAYA ICBM LAUNCH SITE 65	UR 5032N 11549E 3
OLOVYANNAYA ICBM LAUNCH SITE 66	UR 5109N 11552E 3
OLOVYANNAYA ICBM LAUNCH SITE 67	UR 5106N 11550E 3
OLOVYANNAYA ICBM LAUNCH SITE 68	UR 5108N 11557E 3
OLOVYANNAYA ICBM LAUNCH SITE 69	UR 5105N 11555E 3
OLOVYANNAYA ICBM LAUNCH SITE 70	UR 5113N 11555E 3
OLOVYANNAYA ICBM LAUNCH SITE 72	UR 5110N 11602E 3
OLOVYANNAYA ICBM LAUNCH SITE 73	UR 5035N 11549E 3
OLOVYANNAYA ICBM COMPLEX SUPPORT FACILITY	UR 5049N 11550E 3
OLOVYANNAYA ICBM RAIL-TO-ROAD TSFR POINT	UR 5050N 11552E 3
DOMBAROVSKIY ICBM COMPLEX	UR 5101N 05950E 1
DOMBAROVSKIY ICBM LAUNCH SITE 21	UR 5051N 05959E 1
DOMBAROVSKIY ICBM LAUNCH SITE 25	UR 5046N 06011E 1
DOMBAROVSKIY ICBM LAUNCH SITE 26	UR 5052N 06010E 1
KARTALY ICBM COMPLEX	UR 5302N 06034E 1
KARTALY ICBM COMPLEX	UR 5302N 06034E 3
KARTALY ICBM LAUNCH SITE 2	UR 5256N 06031E 1
KARTALY ICBM LAUNCH SITE 14	UR 5300N 06046E 1
KARTALY ICBM LAUNCH SITE 15	UR 5257N 06039E 1
KARTALY ICBM LAUNCH SITE 18	UR 5251N 06038E 1
KARTALY ICBM LAUNCH SITE 19	UR 5253N 06046E 1
KARTALY ICBM LAUNCH SITE 20	UR 5257N 06055E 1
KARTALY ICBM LAUNCH SITE 21	UR 5251N 06055E 1
KARTALY ICBM COMPLEX SUPPORT FACILITY	UR 5302N 06034E 1
KARTALY ICBM RAIL-TO-ROAD TRANSFER POINT	UR 5301N 06034E 1
IMENI GASTELLO ICBM COMPLEX	UR 5106N 06618E 4
IMENI GASTELLO ICBM LAUNCH SITE 1	UR 5103N 06605E 4
IMENI GASTELLO ICBM LAUNCH SITE 2	UR 5106N 06601E 4
IMENI GASTELLO ICBM LAUNCH SITE 3	UR 5110N 06605E 4
IMENI GASTELLO ICBM LAUNCH SITE 5	UR 5113N 06611E 4
IMENI GASTELLO ICBM LAUNCH SITE 6	UR 5113N 06605E 4
IMENI GASTELLO ICBM LAUNCH SITE 7	UR 5057N 06608E 4
IMENI GASTELLO ICBM LAUNCH SITE 8	UR 5057N 06559E 4
IMENI GASTELLO ICBM LAUNCH SITE 9	UR 5057N 06616E 4
IMENI GASTELLO ICBM LAUNCH SITE 11	UR 5052N 06600E 4
IMENI GASTELLO ICBM LAUNCH SITE 12	UR 5051N 06609E 4
IMENI GASTELLO ICBM LAUNCH SITE 13	UR 5056N 06550E 4
IMENI GASTELLO ICBM LAUNCH SITE 16	UR 5102N 06550E 4
TATISHCHEVO ICBM COMPLEX	UR 5140N 04534E 3

K1

TOP SECRET

25X

25X

MISSION 4031 17-24 AUGUST 1966

K1

TATISHCHEVO ICBM LAUNCH SITE 1	UR 5148N 04539E 3
TATISHCHEVO ICBM LAUNCH SITE 2	UR 5151N 04541E 3
TATISHCHEVO ICBM LAUNCH SITE 5	UR 5145N 04541E 3
TATISHCHEVO ICBM LAUNCH SITE 6	UR 5144N 04535E 3
TATISHCHEVO ICBM LAUNCH SITE 7	UR 5147N 04534E 3
TATISHCHEVO ICBM LAUNCH SITE 8	UR 5150N 04534E 3
TATISHCHEVO ICBM LAUNCH SITE 9	UR 5149N 04529E 3
TATISHCHEVO ICBM LAUNCH SITE 10	UR 5153N 04536E 3
TATISHCHEVO ICBM LAUNCH SITE 11	UR 5152N 04531E 3
TATISHCHEVO ICBM LAUNCH SITE 12	UR 5136N 04530E 3
TATISHCHEVO ICBM LAUNCH SITE 13	UR 5134N 04523E 3
TATISHCHEVO ICBM LAUNCH SITE 14	UR 5133N 04529E 3
TATISHCHEVO ICBM LAUNCH SITE 15	UR 5132N 04535E 3
TATISHCHEVO ICBM LAUNCH SITE 16	UR 5129N 04528E 3
TATISHCHEVO ICBM LAUNCH SITE 17	UR 5136N 04535E 3
TATISHCHEVO ICBM LAUNCH SITE 19	UR 5131N 04523E 3
TATISHCHEVO ICBM LAUNCH SITE 20	UR 5133N 04518E 3
TATISHCHEVO ICBM LAUNCH SITE 21	UR 5138N 04524E 3
TATISHCHEVO ICBM LAUNCH SITE 22	UR 5132N 04513E 3
TATISHCHEVO ICBM LAUNCH SITE 24	UR 5132N 04506E 3
TATISHCHEVO ICBM LAUNCH SITE 25	UR 5126N 04516E 3
TATISHCHEVO ICBM LAUNCH SITE 26	UR 5128N 04510E 3
TATISHCHEVO ICBM LAUNCH SITE 27	UR 5129N 04515E 3
TATISHCHEVO ICBM LAUNCH SITE 28	UR 5127N 04521E 3
TATISHCHEVO ICBM LAUNCH SITE 29	UR 5129N 04533E 3
TATISHCHEVO ICBM LAUNCH SITE 30	UR 5140N 04529E 3
TATISHCHEVO ICBM LAUNCH SITE 32	UR 5125N 04510E 3
TATISHCHEVO ICBM LAUNCH SITE 35	UR 5141N 04532E 3
TATISHCHEVO ICBM LAUNCH SITE 36	UR 5142N 04513E 3
TATISHCHEVO ICBM LAUNCH SITE 37	UR 5145N 04517E 3
TATISHCHEVO ICBM LAUNCH SITE 38	UR 5140N 04502E 3
TATISHCHEVO ICBM LAUNCH SITE 39	UR 5146N 04506E 3
TATISHCHEVO ICBM LAUNCH SITE 41	UR 5143N 04508E 3
TATISHCHEVO ICBM LAUNCH SITE 42	UR 5145N 04511E 3
TATISHCHEVO ICBM LAUNCH SITE 44	UR 5125N 04504E 3
TATISHCHEVO ICBM LAUNCH SITE 47	UR 5155N 04543E 3
TATISHCHEVO ICBM LAUNCH SITE 51	UR 5149N 04511E 3
TATISHCHEVO ICBM LAUNCH SITE 54	UR 5139N 04509E 3
TATISHCHEVO ICBM LAUNCH SITE 57	UR 5128N 04504E 3
TATISHCHEVO ICBM LAUNCH SITE 58	UR 5152N 04521E 3
TATISHCHEVO ICBM LAUNCH SITE 59	UR 5145N 04521E 3
TATISHCHEVO ICBM LAUNCH SITE 61	UR 5152N 04514E 3
TATISHCHEVO ICBM LAUNCH SITE 62	UR 5156N 04518E 3
TATISHCHEVO ICBM PROB LAUNCH SITE 63	UR 5156N 04523E 3
TATISHCHEVO ICBM PROB LAUNCH SITE 65	UR 5149N 04518E 3
TATISHCHEVO ICBM LAUNCH SITE 66	UR 5151N 04525E 3
TATISHCHEVO ICBM LAUNCH SITE 67	UR 5202N 04527E 3
TATISHCHEVO ICBM PROB LAUNCH SITE 69	UR 5208N 04524E 3
TATISHCHEVO ICBM PROB LAUNCH SITE 70	UR 5208N 04529E 3

25X

TOP SECRET

25X

MISSION 4031 17-24 AUGUST 1966

TATISHCHEVO ICBM LAUNCH SITE 71	UR 5204N 04531E 3
TATISHCHEVO ICBM LAUNCH SITE 72	UR 5139N 04514E 3
TATISHCHEVO ICBM LAUNCH SITE 73	UR 5140N 04519E 3
TATISHCHEVO ICBM LAUNCH SITE 74	UR 5208N 04517E 3
TATISHCHEVO ICBM LAUNCH SITE 75	UR 5159N 04530E 3
TATISHCHEVO ICBM LAUNCH SITE 80	UR 5201N 04545E 3
TATISHCHEVO ICBM LAUNCH SITE 81	UR 5209N 04538E 3
TATISHCHEVO ICBM LAUNCH SITE 83	UR 5212N 04528E 3
TATISHCHEVO ICBM LAUNCH SITE 84	UR 5215N 04531E 3
TATISHCHEVO ICBM LAUNCH SITE 85	UR 5213N 04516E 3
TATISHCHEVO ICBM LAUNCH SITE 86	UR 5211N 04521E 3
TATISHCHEVO ICBM LAUNCH SITE 88	UR 5158N 04518E 3
TATISHCHEVO ICBM LAUNCH SITE 89	UR 5148N 04524E 3
TATISHCHEVO ICBM LAUNCH SITE 90	UR 5145N 04527E 3
TATISHCHEVO ICBM LAUNCH SITE 91	UR 5214N 04523E 3
TATISHCHEVO ICBM LAUNCH SITE 92	UR 5206N 04526E 3
TATISHCHEVO ICBM LAUNCH SITE 93	UR 5211N 04513E 3
TATISHCHEVO ICBM LAUNCH SITE 98	UR 5157N 04536E 3
TATISHCHEVO ICBM LAUNCH SITE 99	UR 5208N 04544E 3
TATISHCHEVO ICBM LAUNCH SITE 100	UR 5158N 04544E 3
TATISHCHEVO ICBM COMPLEX SUPPORT FACILITY	UR 5140N 04534E 3
TATISHCHEVO ICBM RAIL-TO-ROAD TRANSFER PT	UR 5141N 04532E 3
BALTA MRBM LAUNCH SITE 1	UR 4801N 02933E 2
BALTA MRBM LAUNCH SITE 2	UR 4807N 02934E 2
KAKASHURA IRBM LAUNCH SITE	UR 4239N 04727E 2
GELLI IRBM LAUNCH SITE	UR 4245N 04728E 2
GRESK MRBM LAUNCH SITE 1	UR 5314N 02742E 2
GUSEV MRBM LAUNCH SITE 1	UR 5441N 02205E 4
IECAVA MRBM LAUNCH SITE 1	UR 5635N 02403E 2
IECAVA MRBM LAUNCH SITE 2	UR 5639N 02408E 2
JELGAVA FIXED FIELD MRBM SITE 1	UR 5638N 02352E 2
JELGAVA FIXED FIELD MRBM SITE 2	UR 5644N 02355E 2
KARMELOVA MRBM LAUNCH SITE	UR 5457N 02406E 3
KOROSTEN MRBM LAUNCH SITE 2	UR 5052N 02830E 2
VIESVILE MRBM LAUNCH SITE	UR 5501N 02223E 3
NEMAN MRBM LAUNCH SITE	UR 5501N 02211E 4
KURDZHIPS KAYA MRBM LAUNCH SITE	UR 4431N 04000E 3
NIGRANDE IRBM LAUNCH SITE	UR 5631N 02202E 2
PAPLAKA MRBM LAUNCH SITE 1	UR 5624N 02115E 4
PAPLAKA MRBM LAUNCH SITE 2	UR 5625N 02115E 4
POLOTSK MRBM LAUNCH SITE 1	UR 5522N 02844E 2
RISTI MRBM LAUNCH SITE 1	UR 5904N 02403E 2
RISTI MRBM LAUNCH SITE 2	UR 5906N 02406E 2
SHCHITNO FIXED FIELD MRBM SITE 1	UR 5243N 02458E 2
SHCHITNO FIXED FIELD MRBM SITE 2	UR 5241N 02457E 2
TAURAGE MRBM LAUNCH SITE 1	UR 5510N 02220E 3
TAURAGE MRBM LAUNCH SITE 3	UR 5505N 02219E 3
TAURAGE FIXED FIELD MRBM SITE	UR 5510N 02214E 3
UGOLNYY MRBM - IRBM LAUNCH SITE	UR 6447N 17756E 2

MISSION 4031 17-24 AUGUST 1966

KAPUSTIN YAR/VLADIMIROVKA MSL TEST CTR	UR	4835N	04545E	3
KAPUSTIN YAR LAUNCH COMPLEX A	UR	4842N	04615E	3
KAPUSTIN YAR LAUNCH COMPLEX B	UR	4841N	04616E	3
KAPUSTIN YAR LAUNCH COMPLEX C	UR	4836N	04616E	3
KAPUSTIN YAR LAUNCH COMPLEX D	UR	4828N	04618E	3
KAPUSTIN YAR LAUNCH COMPLEX E	UR	4846N	04618E	3
KAPUSTIN YAR LAUNCH COMPLEX G	UR	4822N	04617E	3
KAPUSTIN YAR LAUNCH COMPLEX H	UR	4848N	04620E	3
KAPUSTIN YAR MISSILE STOR & HANDLING AREA	UR	4822N	04612E	3
SARY-SHAGAN ANTIMISSILE TEST CENTER	UR	4602N	07334E	3
SARY-SHAGAN LAUNCH COMPLEX A (ZONE A)	UR	4625N	07252E	4
SARY-SHAGAN LAUNCH COMPLEX B (ZONE B)	UR	4559N	07231E	1
KAMCHATKA PENINSULA MISSILE IMPACT AREA	UR	5722N	16142E	2

TAI-YUAN SOLID PROPELLANT TEST FACILITY	CH	3759N	11233E	1
PEI-CHING MSL DEV & PROD CTR CHANG-HSIN-TICH	CH	3950N	11608E	1
TBILISI AIRFRAME PLANT 31	UR	4140N	04452E	1
STERLITAMAK ROCKET MOTOR TEST FACILITY	UR	5341N	05558E	1
BIYSK ROCKET MOTOR TEST FACILITY	UR	5229N	08507E	1
KAMENSK-SHAKHTINSKIY RKT MOTOR TEST FAC	UR	4819N	04016E	1
KEMEROVO ROCKET MOTOR TEST FACILITY	UR	5526N	08557E	1
PING-FENG-SHE-CHENG TANK PLANT	CH	4039N	10954E	1
HU-HO-HAO-TE SUSP SOL PROPL RKT MTR CPLX	CH	4044N	11158E	1
LAO CAI SAM SEARCH	VN	2229N	10359E	1
DIEN BIEN PHU SAM SEARCH	VN	2123N	10301E	1
VINH SAM SEARCH	VN	1840N	10540E	2
CAO BANG SAM SEARCH AREA	VN	2240N	10615E	1
TSANG-SHANG PROBABLE CD POSITIONS	CH	3724N	11956E	2
PAO-TOU SAM SEARCH AREA	CH	4039N	10958E	2
SEVEROMORSK NAVAL MISSILE STORAGE	UR	6906N	03328E	4
SEVEROMORSK NAVAL BASE	UR	6904N	03326E	4

GUBA SAYDA NAVAL MISSILE STORAGE	UR	6915N	03320E	4
GUBA SAYDA SUBMARINE BASE	UR	6915N	03321E	4

GUBA OLENYA SUBMARINE BASE	UR	6913N	03323E	4
POLYARNYY NVL MISSILE SUPPORT FAC KISLAYA	UR	6912N	03330E	4
PETROPAVLOVSK NAVAL BASE TARYA BAY	UR	5255N	15834E	3
PETROPAVLOVSK NAVAL MISSILE STORAGE	UR	5257N	15827E	3
PETROPAVLOVSK NVL MSL SUPPORT FACILITY	UR	5257N	15829E	3
PETROPAVLOVSK NVL B SELDEVAYA BAY	UR	5254N	15830E	3
VLADIMIR SUBMARINE BASE	UR	4356N	13528E	3
VLADIVOSTOK SUBMARINE BASE ULISA BAY	UR	4304N	13155E	3
VLADIVOSTOK NAVAL BASE AND SHIPYARD 202	UR	4306N	13156E	4
PECHENGA NAVAL BASE LINAKHAMARI	UR	6939N	03122E	4
ODESSA NAVAL BASE & SHIPYARD MARTI	UR	4629N	03044E	3
LIEPAJA NAVAL BASE AND SHIPYARD	UR	5633N	02102E	4
RIGA NAVAL BASE & SHPYD BOLDERAJA	UR	5703N	02402E	4
PALDISKI NAVAL BASE	UR	5921N	02404E	4

MISSION 4031 17-24 AUGUST 1966

LENINGRAD PROB LR SAM LCH CPLX SEARCH	UR 5955N 03020E 1
TALLINN PROB LONG RANGE SAM LCH CPLX	UR 5924N 02419E 2
LIEPAJA PROB LONG RANGE SAM LCH CPLX	UR 5633N 02111E 2
PAO-TOU SAM SITE A02-2	CH 4045N 11004E 1
SAN-YUAN SAM SITE A06-2	CH 3440N 10859E 1
HAI PHONG SAM SITE A31-2	VN 2054N 10636E 1
HAI PHONG SAM SITE A33-2	VN 2056N 10636E 1
THANH HOA SAM SITE A17-2	VN 1945N 10547E 2
THANH HOA SAM SITE A19-2	VN 1941N 10546E 2
THANH HOA SAM SITE A14-2	VN 1945N 10520E 2
VINH AREA FIELD SAM SITE 3	VN 1810N 10542E 2
VINH SAM SITE A07-2	VN 1840N 10542E 2
STARYY KILDIN CRUISE-MISSILE LAUNCH SITE	2UR 6922N 03404E 2
KORDON SAM TRAINING CENTER	UR 4725N 04804E 2
DALNYAYA CRUISE-MISSILE LAUNCH SITE	UR 4554N 14204E 2
KAUNAS SAM SUPPORT FACILITY	UR 5451N 02400E 1
BOBRUYSK SAM SUPPORT FACILITY	UR 5308N 02915E 3
MINSK/MACHULISHCHE AIRFIELD	UR 5347N 02735E 1
SPASSK-DALNIY AIRFIELD EAST	UR 4437N 13253E 2
KALININGRAD/PROVEREN AIRFIELD	UR 5446N 02025E 1
ZHITOMIR/SKOMOROKHI AIRFIELD	UR 5010N 02844E 1
BOBRUYSK AIRFIELD	UR 5306N 02912E 3
ANADYR/LENINKA AIRFIELD	UR 6442N 17742E 1
USSURIYSK/VOZDVIHENKA AIRFIELD	UR 4355N 13156E 1
SEVEROMORSK AIRFIELD	UR 6901N 03325E 1
PETROPAVLOVSK/YELIZOVO AIRFIELD	UR 5310N 15830E 2
VORONEZH AIRCRAFT ASSEMBLY PLANT 64	UR 5138N 03915E 1
AKHTUBINSK/VLADIMIROVKA AIRFIELD	UR 4818N 04613E 2
AKHTUBINSK/VLADIMIROVKA AIRFIELD	UR 4818N 04613E 4
HSI-AN AIRFRAME PLANT YEN-LIANG AIRFIELD	CH 3439N 10915E 1
CHENG-TU AIRFRAME PLANT	CH 3043N 10358E 1
KUNOVIC AIRCRAFT PLANT	CZ 4902N 01727E 1
CHENG-CHOU AIRFIELD NORTHEAST	CH 3447N 11343E 2
CHENG-TU/SHUANG-LIU AIRFIELD	CH 3034N 10356E 2
CHENG-TU/TAI-PING-SSU AIRFIELD	CH 3036N 10400E 2
CHENG-TU/WEN-CHIANG AIRFIELD	CH 3042N 10357E 2
HAN-KOU AIRFIELD	CH 3035N 11414E 2
HSIANG-TANG AIRFIELD	CH 2826N 11556E 2
HSIN-CHING AIRFIELD	CH 3025N 10351E 2
KUANG-CHOU/PAI-YUN AIRFIELD	CH 2311N 11316E 2
LIEN-CHENG AIRFIELD	CH 2540N 11645E 1
LING-SHUI AIRFIELD	CH 1830N 10959E 2
LIU-CHOU AIRFIELD	CH 2417N 10923E 2
MING-CHIANG AIRFIELD NORTH	CH 3232N 11404E 2
NAN-CHANG AIRFIELD NEW	CH 2838N 11555E 2
PEI-CHING/LAN-TIEN-CHANG AIRFIELD	CH 3958N 11615E 3
PENG-SHAN AIRFIELD	CH 3015N 10351E 2
SHIH-CHIA-CHUANG AIRFIELD	CH 3805N 11425E 2
TAI-YUAN AIRFIELD NEW	CH 3749N 11233E 2



K1

TOP SECRET

25X  
25X

MISSION 4031 17-24 AUGUST 1966

K1

WU-HU AIRFIELD	CH 3124N 11823E 1
AN-KANG AIRFIELD	CH 3242N 10856E 2
NAN-NING AIRFIELD SOUTH	CH 2236N 10810E 2
SHAN-TOU AIRFIELD NORTHEAST	CH 2325N 11645E 1
HU-HSIEN AIRFIELD	CH 3409N 10836E 2
HSIN-HSIANG AIRFIELD	CH 3518N 11350E 2
YEN-LIANG AIRFIELD	CH 3439N 10916E 2
HSU-CHANG AIRFIELD	CH 3402N 11343E 2
PAPA AIRFIELD	HU 4722N 01730E 1
RAVNETS AIRFIELD	BU 4232N 02716E 1
CARACAL AIRFIELD NEW	RU 4405N 02425E 1
OMSK AIRFIELD EAST	UR 5458N 07333E 1
CHING-TAO SEAPLANE STATION	CH 3603N 12017E 1
PING-YUAN-CHIEH AIRFIELD	CH 2342N 10350E 2
LAN-CHO-WAN-TZU AIRFIELD	CH 4357N 08705E 2
HA-MI AIRFIELD 2	CH 4251N 09338E 2
CHIU-HO-SHIH AIRFIELD	CH 4210N 08712E 2
HSU-PU AIRFIELD	CH 2756N 11040E 2
SARGODHA AIRFIELD	PK 3204N 07241E 1
SHA-HO AIRFIELD	CH 3653N 11425E 3

25X

CHING-TAO SUBMARINE BASE	CH 3604N 12019E 2
CHING-TAO NAVAL DOCKYARD	CH 3604N 12019E 3
SHAN-TOU NAVAL BASE	CH 2321N 11640E 3
HUANG-PU NAVAL BASE AND SHIPYARD	CH 2305N 11325E 3
BUKHTA BECHEVINSKAYA PORT FACILITY	UR 5316N 15946E 2
SHAN-TOU MOTOR TORPEDO BOAT BASE	CH 2312N 11637E 3
WU-HAN SHIPYARD CHUNG-YANG	CH 3032N 11417E 3
GORKIY SHIPYARD & HEAVY EQUIP PLT 112	UR 5622N 04352E 4
KHABAROVSK SHIPYARD USSURI SOUTH	UR 4824N 13506E 2
BEN THUY PORT FACILITIES	VN 1839N 10542E 3

TOP SECRET

25X  
25X

MISSION 4031 17-24 AUGUST 1966

CHING-TAO MOTOR TORPEDO BOAT BASE	CH 3603N 12019E	2
KUANG-CHOU SHIPYARD TUNG-LANG	CH 2304N 11315E	1
SHAO-KUAN MUNITIONS STORAGE DEPOT EAST	CH 2448N 11338E	1
TAI-YUAN CHEMICAL PLANT	CH 3747N 11228E	1
SKRUNDA DUAL HEN HOUSE	UR 5643N 02157E	2
BAYKONUR POSS ELECTRONICS FACILITY	UR 4721N 06520E	1
MANJAR RADAR SEARCH AREA	CH 4000N 08530E	1
CHIEH-MO SUSPECT RADAR ACTIVITY	CH 3809N 08531E	1
POLOTSK TALL KING FACILITY	UR 5530N 02853E	1
ULYANOVSK TALL KING-AIR WARNING RADAR FAC	UR 5421N 04819E	2
AYTOS ARMY BARRACKS 1	BU 4242N 02714E	4
GOTSE DELCHEV ARMY BARRACKS NEVROKOP 1	BU 4135N 02343E	4
GRUDOVO ARMY BARRACKS WEST 1	BU 4220N 02710E	4
KHARMANLI ARMY BARRACKS 1 AND 2	BU 4156N 02553E	4
MARITSA ARMY BARRACKS 1	BU 4202N 02549E	4
NOVA ZAGORA ARMY BARRACKS NORTH 1	BU 4230N 02600E	3
SAMOKOV ARMY BARRACKS WEST 1	BU 4220N 02332E	4
TURGOVISHTA ARMY BARRACKS 1	BU 4314N 02633E	4
SHAO-KUAN ARMY BARRACKS AREA 1	CH 2442N 11336E	4
CHAO-AN BARRACKS AND STORAGE AREA	CH 2342N 11636E	2
CHE-CHIANG MILITARY COMPLEX	CH 2645N 11236E	4
CHU-CHING MILITARY AREA	CH 2531N 10347E	2
CHU-CHOU AMMUNITION DEPOT NORTH	CH 2754N 11306E	4
CHU-HSIEN BARRACKS AND HQ 180TH INF DIV	CH 3220N 11818E	2
HENG-YANG AMMUNITION DEPOT ENE FEN-SHUI-AOCH	CH 2656N 11243E	4
HENG-YANG AMMUNITION DEPOT SOUTHEAST	CH 2651N 11241E	1
HSING-TAI MILITARY COMPLEX	CH 3704N 11430E	4
HUANG-PU ARMY SUPPLY DEPOT EAST	CH 2305N 11325E	4
HUANG-PEI MILITARY INSTALLATIONS	CH 3052N 11420E	4
HUANG-PEI MUNITIONS STORAGE	CH 3048N 11419E	1
HUO-LU MILITARY AREAS	CH 3805N 11425E	4
KAN-CHOU ARMY BARRACKS SOUTHWEST	CH 2552N 11455E	4
KUANG-CHOU MILITARY STORAGE AREA	CH 2310N 11314E	4
KUANG-CHOU STORAGE AREA SHA-HO NORTHWEST	CH 2309N 11318E	4
KUANG-CHOU AMMUNITION DEPOT SHIH-PAI	CH 2308N 11321E	1
MING-CHIANG BKS AND HQ 45 INFANTRY DIV NW	CH 3229N 11401E	4
NAN-KOU MILITARY COMPLEX	CH 4011N 11608E	4
YANG-FANG ARMY BARRACKS	CH 4008N 11608E	4
CHANG-PING BARRACKS AREA AND SUPPLY DEPOT	CH 4013N 11615E	4
PEI-CHING ACADEMY OF MILITARY SCIENCES	CH 3955N 11615E	4
SHAN-TOU ARMY BARRACKS LIEN-TANG	CH 2327N 11635E	2
SHANG-JAO MILITARY COMPLEX	CH 2829N 11755E	2
SHANG-JAO AMMUNITION DEPOT WEST-SOUTHWEST	CH 2822N 11754E	1
SHANG-JAO EXPLOSIVES STORAGE COMPLEX	CH 2828N 11754E	1
TSAO-WU STORAGE AREA	CH 2432N 11337E	4
OLMOUC ARMY BARRACKS NORTH	CZ 4936N 01715E	4
UHERSKE HRADISTE ARMY BARRACKS	CZ 4904N 01728E	4

MISSION 4031 17-24 AUGUST 1966

ZILINA ARMY BARRACKS SOUTHWEST

CZ 4912N 01843E 2

ABASAR ARMY BARRACKS 1	HU 4748N 02002E 4
GYONGYOS ARMY BARRACKS 1	HU 4746N 01955E 2
KISKUNMAJSA ARMY BARRACKS 1 & 2	HU 4628N 01945E 4
MARCALI ARMY BARRACKS 1	HU 4635N 01724E 4
PAPA ARMY BARRACKS BOTTYAN JANOS 1	HU 4718N 01729E 4
TAPOLCA TRAINING AREA 404	HU 4653N 01723E 4
TAPOLCA TRAINING AREA 405	HU 4657N 01726E 4
TAPOLCA ARMY BARRACKS DOBO ISTVAN 1	HU 4653N 01724E 4
HRUBIESZOW ARMY BARRACKS 1	PO 5049N 02353E 2
ORZYSZ ARMY BARRACKS SZLAGA 8	PO 5343N 02203E 4
ORZYSZ TRAINING AREA 402	PO 5344N 02203E 4
KOLUSZKI ORDNANCE AND AMMUNITION DEPOT SE	PO 5142N 01955E 2
LOWICZ ARMY BARRACKS 1	PO 5206N 01956E 2
NYSA ARMY BARRACKS EISKELLER 2	PO 5028N 01718E 4
NYSA ARMY BARRACKS KLASEWITZ 1	PO 5029N 01721E 4
ORZYSZ ARMY BARRACKS 1	PO 5348N 02157E 4
TARNOWSKIE GORY ARMY BARRACKS UHLANEN 1	PO 5027N 01850E 2
WROCLAW ARMY BARRACKS 1 NORTHWEST	PO 5108N 01658E 2
WROCLAW ARMY BARRACKS 3 KARLOWICE	PO 5108N 01704E 2
WROCLAW ARMY BARRACKS 5	PO 5105N 01700E 2
WROCLAW ARMY BKS 7 ROSENTHAL	PO 5108N 01701E 2
WROCLAW HQ SILESIA MILITARY DISTRICT	PO 5105N 01700E 4
CARACAL ARMY BARRACKS 2	RU 4407N 02421E 4
FOCSANI ARMY BKS S 1/2 AMMO DUMP SOUTH	RU 4541N 02710E 4
FOCSANI ARMY BARRACKS SOUTH 1/2	RU 4541N 02711E 4
PITESTI ARMY BARRACKS 1/5	RU 4451N 02451E 4
CHI-LUNG ARMY BARRACKS	TI 2820N 08521E 1
GYOR ARMY BARRACKS RAKOCZI 201	HU 4740N 01738E 4
GYOR ARMY BARRACKS VADASZ 221	HU 4740N 01739E 4
GYOR ARMY BARRACKS 6	HU 4741N 01737E 4
GYOR HQ BARRACKS TELEKI	HU 4741N 01738E 4
GYOR STORAGE DEPOT	HU 4741N 01739E 4
ALATYR ORDNANCE DEPOT	UR 5450N 04633E 2
BENDERY ARMY BARRACKS CITADEL PUG AL 2	UR 4650N 02929E 4
BENDERY ARMY BARRACKS AL 1	UR 4650N 02927E 4
BEREZA ARMY BARRACKS YASELDA AL 2	UR 5232N 02459E 4
BEREZA BARRACKS NORTHWEST	UR 5233N 02455E 4
BEREZINO ARMY BARRACKS AL 1	UR 4614N 02912E 4
BOBRUYSK AMMUNITION STORAGE	UR 5305N 02913E 4
BOBRUYSK ARMY BARRACKS AFLD NE AL 6	UR 5307N 02914E 4
BOBRUYSK ARMY BARRACKS SOUTHEAST AL 4	UR 5306N 02917E 4
BOBRUYSK ARMY BARRACKS AL 5	UR 5308N 02912E 4
BOBRUYSK ARMY BARRACKS SOUTH AL 3	UR 5308N 02915E 3
BOBRUYSK ARMY TRAINING AREA SOUTHEAST	UR 5303N 02918E 4
BOBRUYSK ARMY SUPPLY DEPOT NORTHWEST	UR 5308N 02911E 4

MISSION 4031 17-24 AUGUST 1966

BOBRUYSK ARMY BARRACKS EAST AL 2	UR 5308N 02914E 3
BORISOV ARMY BARRACKS CENTRAL AL 4	UR 5413N 02831E 4
BORISOV ARMY BARRACKS SOUTH AL 2	UR 5411N 02829E 4
BORISOV ARMY BARRACKS WEST	UR 5414N 02828E 4
BORISOV SUPPLY DEPOT & POL STORAGE AREA	UR 5412N 02830E 4
BORISOV TRAINING AREA & RANGE WEST	UR 5411N 02821E 4
BORISOV ARMY TRAINING AREA II	UR 5408N 02829E 4
BORZYA ARMY BARRACKS	UR 5023N 11631E 4
BREST ARMY BARRACKS CITADEL NORTH AL 4	UR 5206N 02339E 3
BREST ARMY BARRACKS SOUTHEAST	UR 5203N 02344E 4
BREST ARMY BARRACKS PUGACHEVO	UR 5204N 02345E 2
BREST MILITARY TRAINING AREA	UR 5201N 02344E 3
CHELYABINSK ARMY BARRACKS AL 2	UR 5510N 06125E 4
CHERKASSY ARMY BARRACKS AL 1	UR 4926N 03202E 4
CHERKASSY ARMY BARRACKS SOUTH AL 2	UR 4925N 03201E 4
CHOP ARMY BARRACKS	UR 4826N 02214E 3
DRETUN ARMY TRAINING AREA	UR 5538N 02913E 4
GUSEV ARMY BARRACKS NORTHEAST AL 2	UR 5435N 02213E 4
GUSEV ARMY BARRACKS ROMINTE R SOUTH AL 3	UR 5435N 02210E 4
GUSEV ARMY TRAINING AREA TA 1	UR 5437N 02215E 4
GUSEV HQ 26 GDS MTZ RIFLE DIVISION AL 4	UR 5435N 02212E 4
GUSEV TRAINING AREA SOUTHWEST TA 2	UR 5433N 02211E 4
IZMAIL STORAGE AREA	UR 4524N 02850E 4
MOZYR ARMY BARRACKS KALINKOVICHI AL 1	UR 5202N 02911E 4
VINNITSA EXPLOSIVES STORAGE	UR 4924N 02830E 4

25X

KAUNAS ARMY BARRACKS AIRFIELD NORTH AL 7	UR 5453N 02352E 4
KAUNAS ARMY BARRACKS AND DEPOT AL 9	UR 5452N 02356E 3
KAUNAS ARMY BARRACKS KIPRO AL 8	UR 5454N 02356E 4
KAUNAS ARMY BARRACKS SOUTHEAST AL 2	UR 5451N 02357E 2
KAUNAS ARMY BARRACKS SOUTH AL 1	UR 5451N 02356E 3
KAUNAS MILITARY BARRACKS PAMOTERYS	UR 5445N 02355E 2
KAUNAS MILITARY TRAINING AREA TA 1	UR 5448N 02354E 3
KAUNAS ORDNANCE DEPOT PUG	UR 5453N 02356E 1
KECHVELLI BARRACKS AND STORAGE AREA	UR 4120N 04515E 2
KECHVELLI AMMUNITION DEPOT TSIVI SE	UR 4118N 04519E 1
KHOLMSK ARMY BARRACKS ARASAIKAWA	UR 4703N 14205E 4
CHISTOVODNOYE ARMY BARRACKS AL 1	UR 4701N 14219E 4
KHOLMSK ARMY BARRACKS NORTH AL 1	UR 4703N 14204E 4
PYATIRECHYE ARMY BARRACKS SOUTHWEST AL 1	UR 4700N 14215E 4
KIROVOGRAD ARMY BARRACKS CENTRAL AL 1	UR 4830N 03215E 4
KIROVOGRAD ARMY BARRACKS KREML AL 2	UR 4829N 03215E 4
KLINTSY ARMY BARRACKS	UR 5244N 03214E 4
KOMSOMOLETS EXPLOSIVES STORAGE	UR 4400N 04335E 4
KONOTOP TRAINING AREA BATURIN	UR 5118N 03252E 4
KOTOVSK BKS NE AL 1 & SSM TRAINING FAC	UR 4746N 02932E 4
KURESSAARE ARMY BARRACKS AL 2	UR 5815N 02230E 4
LENINAKAN MILITARY TRAINING AREA	UR 4038N 04412E 4
LEPEL ARMY BARRACKS NORTHEAST AL 5	UR 5453N 02843E 4

25X

MISSION 4031 17-24 AUGUST 1966

LEPEL ARMY BARRACKS ZAOZERYE AL 3	UR 5458N 02849E 4
LVOV ARMY BARRACKS AND MIL POLITICAL OCS	UR 4950N 02401E 2
LVOV ARMY BARRACKS AL 7	UR 4950N 02400E 2
LVOV ARMY BARRACKS NORTHWEST AL 11	UR 4954N 02357E 2
LVOV ARMY BARRACKS AL 10	UR 4950N 02404E 2
LVOV ARMY BARRACKS AL 3	UR 4949N 02400E 2
LVOV ARMY BARRACKS SOUTH-SOUTHWEST AL 4	UR 4949N 02400E 2
LVOV POSS MILITARY STORAGE INSTALLATION	UR 4947N 02401E 2
LVOV AMMUNITION DEPOT NORTHWEST PUG	UR 4953N 02357E 1
LYUBOML ARMY BARRACKS AL 1	UR 5112N 02402E 4
LYUBOML ARMY TRAINING AREA WEST	UR 5113N 02355E 4
MINGECHAUR POSSIBLE ARMY BARRACKS	UR 4046N 04658E 3
MINSK AMMUNITION DEPOT SOUTHEAST	UR 5347N 02741E 4
MINSK ARMY BARRACKS URUCHYE AL 1	UR 5357N 02743E 4
MINSK ORD DEPOT SE AND ARMY BKS SE AL 7	UR 5352N 02738E 4
MURMANSK ARMY BKS NAGORNOVSKIY AL 5	UR 6854N 03306E 4
NALCHIK ARMY BARRACKS NORTHEAST AL 1	UR 4329N 04337E 2
NEMAN ARMY BARRACKS AL 2	UR 5503N 02159E 4
NEMAN ARMY BARRACKS AL 4	UR 5500N 02202E 4
NEMAN ARMY BARRACKS AL 6	UR 5502N 02159E 2
NEMAN EXPLOSIVES STORAGE DEPOT	UR 5500N 02202E 2
NESTEROV AMMUNITION STORAGE	UR 5003N 02359E 3
NESTEROV ARMY BARRACKS AL 1	UR 5003N 02358E 3
VOLYA VYSOTSKA ARMY BARRACKS AL 1	UR 5005N 02355E 3
NOVOGRAD-VOLYNSKIY ARMY BARRACKS AL 2	UR 5035N 02739E 4
NOVOGRAD-VOLYNSKIY ARMY BARRACKS AL 1	UR 5036N 02736E 4
NOVOGRAD-VOLYNSKIY TRAINING AREA	UR 5039N 02735E 4
OKTEMBERYAN ARMY BARRACKS NOR ARMAVIR	UR 4007N 04357E 4
OSH ARMY BARRACKS WEST	UR 4031N 07245E 2
PANEVEZYS MUNITIONS FACTORY AND STORAGE	UR 5545N 02419E 2
PECHENGA POSSIBLE ARMY BARRACKS AL 3	UR 6934N 03113E 1
PECHENGA ARMY BARRACKS SOUTH AL 4	UR 6933N 03113E 1
PENZA ARMY BARRACKS AL 1	UR 5310N 04459E 1
PETROPAVLOVSK ARMY BARRACKS NNE	UR 5302N 15845E 1
PLUNGE ARMY BARRACKS AL 1	UR 5555N 02151E 2
POLOTSK ARMY BARRACKS	UR 5530N 02846E 4
POLOTSK ARMY BARRACKS NORTH AL 3	UR 5532N 02846E 4
POLOTSK STORAGE AREA	UR 5530N 02849E 4
PORECHYE MANEUVER AREA GRODNO	UR 5351N 02355E 4
PRIENAI ARMY BARRACKS AL 1	UR 5438N 02357E 2
PRILUKI AMMUNITION DEPOT ICHNYA SSW	UR 5047N 03219E 4
PRILUKI AMMUNITION STORAGE	UR 5033N 03227E 4
PRISHIB BARRACKS & TRAINING AREA	UR 3907N 04834E 4
RATNO PROBABLE MILITARY INSTALLATION	UR 5140N 02432E 4
RAZDOLNOYE ARMY BARRACKS ALEKSEYEVKA AL 2	UR 4333N 13156E 4
ROSTOV ARMY BARRACKS NORTH	UR 4715N 03942E 3
ROSTOV ARMY BARRACKS NORTHWEST AL 7	UR 4715N 03941E 3
RUSTAVI MILITARY TRAINING AREA	UR 4124N 04514E 4
SAMARKAND ARMY BARRACKS DZHUMUSHKABAD	UR 3941N 06653E 4

MISSION 4031 17-24 AUGUST 1966

SHAGLASER TANK FIRING RANGE	UR 3852N 04840E	4
SHIRLOVAYA GORA ARMY BARRACKS RAZ 79	UR 5031N 11623E	4
JASZBERENY ARMY BARRACKS DOSZA GYORGY 1	HU 4729N 01953E	4
JASZBERENY ARMY BARRACKS 21	HU 4730N 01955E	2
SLUTSK ARMY BARRACKS CENTRAL	UR 5301N 02733E	4
SLUTSK ARMY BARRACKS SOUTHWEST	UR 5300N 02732E	4
SMOLENSK ARMY BARRACKS SOUTHWEST	UR 5446N 03201E	4
SOVETSK ARMY BARRACKS CENTRAL AL 1	UR 5504N 02153E	3
NEMAN ARMY BARRACKS AL 5	UR 5502N 02201E	4
NEMAN ARMY BARRACKS AL 1	UR 5502N 02200E	4
TAURAGE ARMY BARRACKS AL 2	UR 5515N 02216E	4
SOVETSK ARMY BARRACKS WEST AL 2	UR 5504N 02152E	4
SPITAK EXPLOSIVES STORAGE	UR 4049N 04414E	4
STEPANAKERT ARMY BARRACKS	UR 3948N 04645E	1
SYZLAN ARMY BARRACKS PLANT 718 AL 3	UR 5309N 04823E	1
SYZLAN ENG & ORDNANCE DEPOT RR STN EAST	UR 5310N 04828E	1

25X

KODA SUSPECT MILITARY INSTALLATION	UR 4134N 04447E	1
TIRASPOL ARMY BARRACKS WEST AL 1	UR 4650N 02935E	4
TOTSKOYE ARMY BARRACKS NORTHEAST AL 2	UR 5232N 05249E	4
ULAN-UDE BKS & TRAINING AREA ONOKHOY SW	UR 5149N 10755E	3
ULYANOVSK ARMY BARRACKS AL 3	UR 5419N 04823E	1
ULYANOVSK ARMY BARRACKS & SIGNAL OCS	UR 5420N 04824E	1
VINNITSA ARMY BARRACKS NORTH AL 1	UR 4915N 02829E	4
VOLSK ARMY BARRACKS NORTHWEST	UR 5205N 04720E	1
YEMILCHINO ARMY BARRACKS AL 1	UR 5052N 02748E	4
ZHITOMIR ARMY BARRACKS NORTHWEST AL 2	UR 5017N 02837E	3
ZOLOTONOSHA ARMY BARRACKS AL 1	UR 4940N 03202E	4
BAN LOT/NA SAN MILITARY COMPLEX	VN 2113N 10402E	2
THAN UYEN ARMY BARRACKS	VN 2200N 10355E	2
THAN UYEN MILITARY AREA EAST	VN 2205N 10352E	2
KISKUNFELEGYHAZA ARMY BARRACKS 1/2	HU 4641N 01949E	4
HO-KOU ARMY BARRACKS NORTH	CH 2232N 10357E	2
CHIU-WENG-YUAN ARMY BARRACKS SOUTHWEST	CH 2419N 11343E	4
CHIU-WENG-YUAN ARMY BARRACKS NORTHEAST	CH 2423N 11351E	4
HUAI-AN ARMY BARRACKS AREA	CH 4040N 11424E	4
SHIH-CHIA-CHUANG BARRACKS AREA	CH 3805N 11430E	4
SHIH-CHIA-CHUANG ARMY BKS & TRNG CEN W	CH 3802N 11425E	4
TAI-YUAN MILITARY INSTALLATIONS	CH 3805N 11238E	1
TAI-YUAN BARRACKS AREA	CH 3756N 11233E	1
PING-YAO BARRACKS AREA	CH 3712N 11209E	1
NEI-CHIU BARRACKS AREA	CH 3722N 11432E	4
HSIN-YANG MILITARY INSTALLATION	CH 3206N 11405E	4
FANG-CHENG ARMY BARRACKS	CH 2146N 10821E	1
LUNG-TANG ARMY BARRACKS TIEN-TUN-YUAN	CH 1923N 11013E	4
CHING-TAO BARRACKS AREAS	CH 3608N 12029E	2
LANG SON ARMY BARRACKS	VN 2150N 10645E	3
HAN-TAN MILITARY AREAS	CH 3637N 11426E	4
LOP NOR AREA 3	CH 4003N 09024E	2

25X

K1

Approved For Release 2005/07/07 : CIA-RDP03-00140R000100010040-7

TOP SECRET

MISSION 4031 17-24 AUGUST 1966

K1

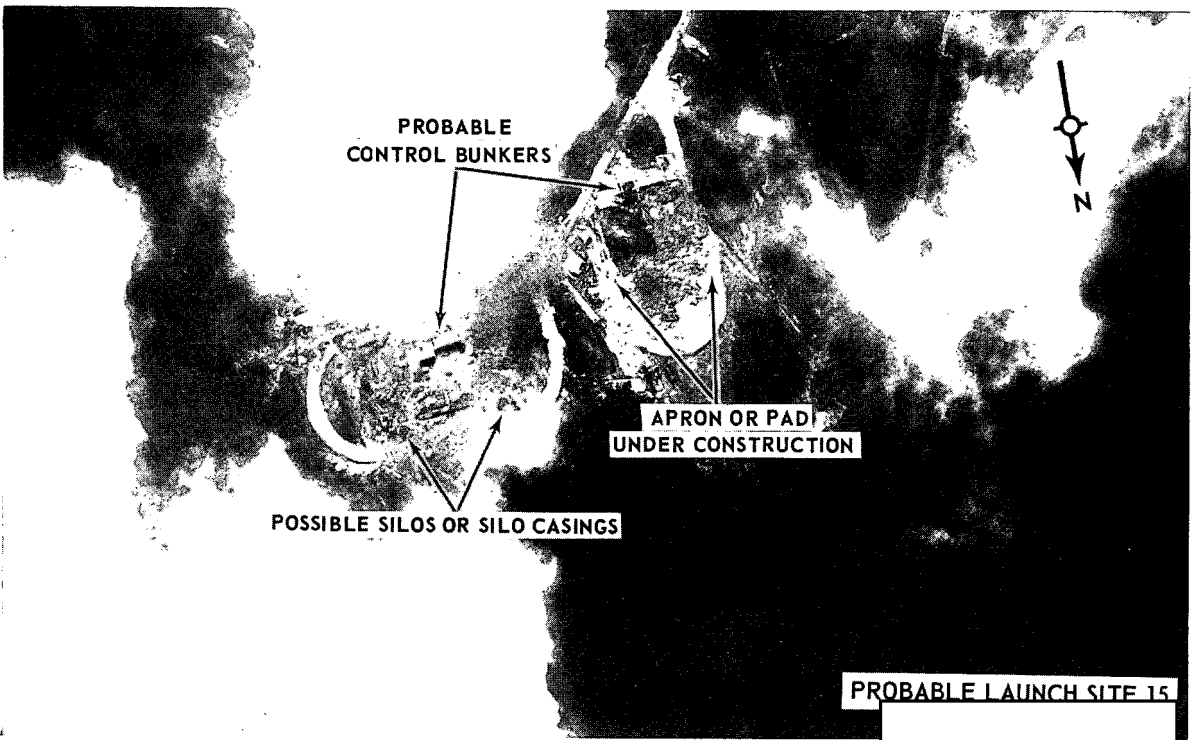
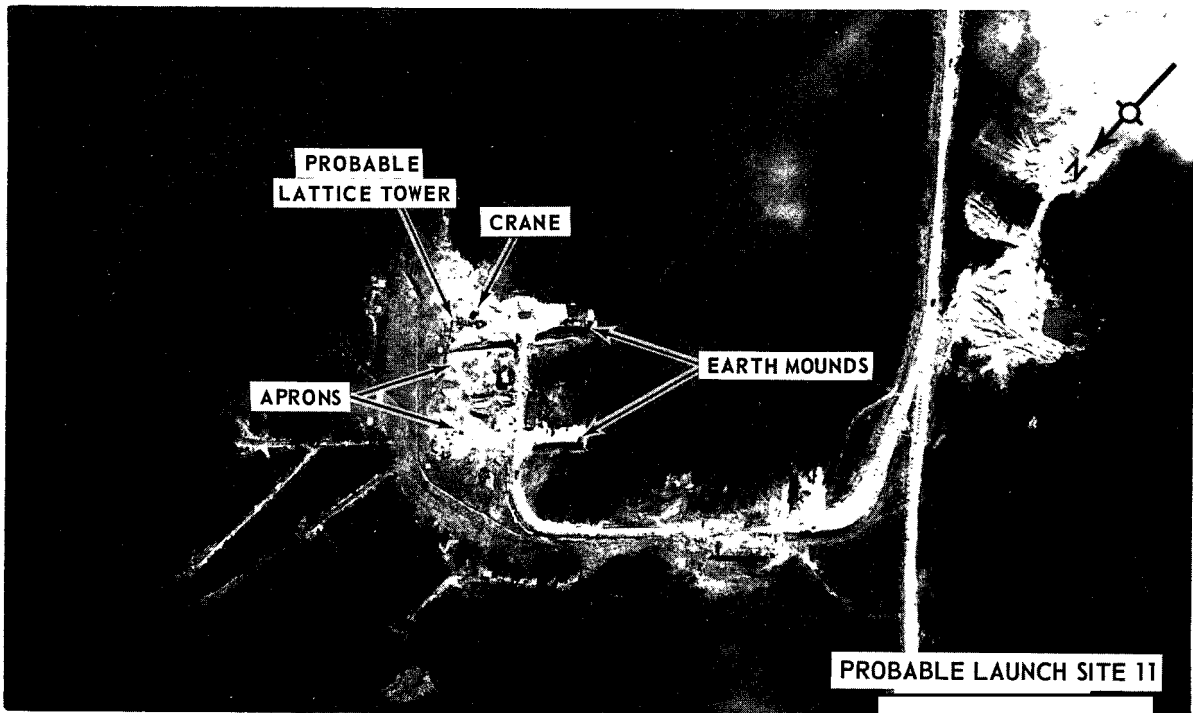
HA NOI/LAO CAI RR SEGMENT 1	VN 2220N 10410E 2
KLINTSY MILITARY INSTALLATION	UR 5244N 03213E 2
CHU-HSIEN TANK TRAINING AREA	CH 3216N 11818E 4
NAN-NING COMPLEX	CH 2249N 10819E 1
KUANG-CHOU COMPLEX	CH 2307N 11315E 1
PEI-CHING COMPLEX	CH 3955N 11623E 1
CHENG-TU COMPLEX	CH 3040N 10404E 1
LANG SON COMPLEX	VN 2151N 10645E 1
WU-HU COMPLEX	CH 3121N 11822E 1
LIU-CHOU COMPLEX	CH 2418N 10924E 1
SHAN-TOU COMPLEX	CH 2322N 11640E 1
TAI-YUAN POSSIBLE ARMS MANUFACTURING PLANT	CH 3753N 11234E 1
LAO CAI COMPLEX	VN 2231N 10359E 1
PAO-TOU ARTILLERY PLANT 447	CH 4041N 10952E 1
PANG-PEI RAIL FACILITIES	CH 4341N 11159E 1
CHAADAYEVKA SENSITIVE OPERATIONS COMPLEX	UR 5307N 04602E 1

**Attachments**



MISSION 4031, 17-24 AUGUST 1966

ATTACHMENT 1



PROBABLE LAUNCH SITES 11 AND 15, PLESETSK ICBM COMPLEX, USSR

NPIC L-1714 (8/66)

MISSION 4031, 17-24 AUGUST 1966

ATTACHMENT 2



LAUNCH SITE 1, LAUNCH COMPLEX A, SARY-SHAGAN ANTIMISSILE TEST CENTER, USSR

NPIC L-1715 (8/66)

K1

TOP SECRET

25X  
25X

MISSION 4031, 17-24 AUGUST 1966

ATTACHMENT 3



NPIC L-1716 (8/66)

LAUNCH SITE 1, LAUNCH COMPLEX A, SARY-SHAGAN ANTIMISSILE TEST CENTER, USSR

25X

TOP SECRET

25X

25X

TOP SECRET

MISSION 4031, 17-24 AUGUST 1966

ATTACHMENT 4

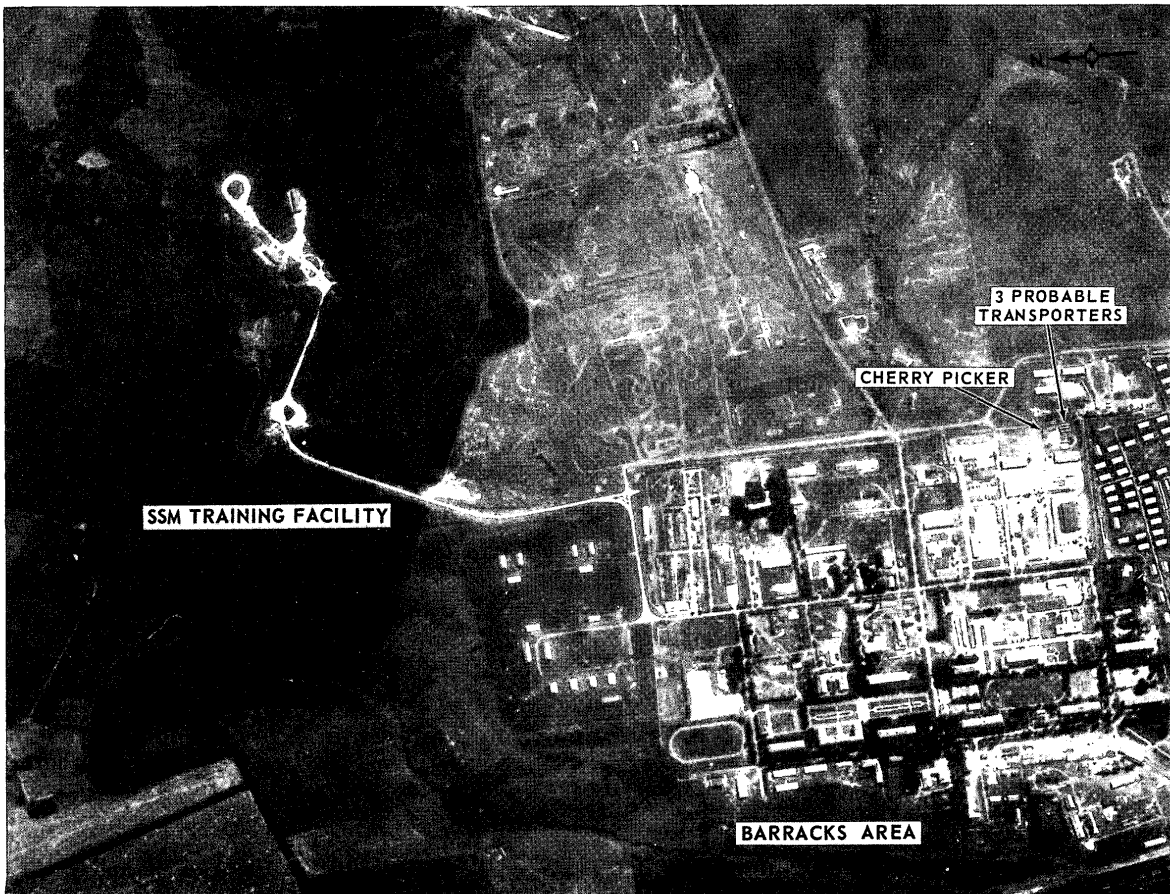


LAUNCH SITE 2, LAUNCH COMPLEX A, SARY-SHAGAN ANTIMISSILE TEST CENTER, USSR

NPIC L-1717 (8/66)

TOP SECRET





NPIC L-1718 (8/66)

BARRACKS NE AL 1 AND SSM TRAINING FACILITY, KOTOVSK, USSR

TOP SECRET

TOP SECRET

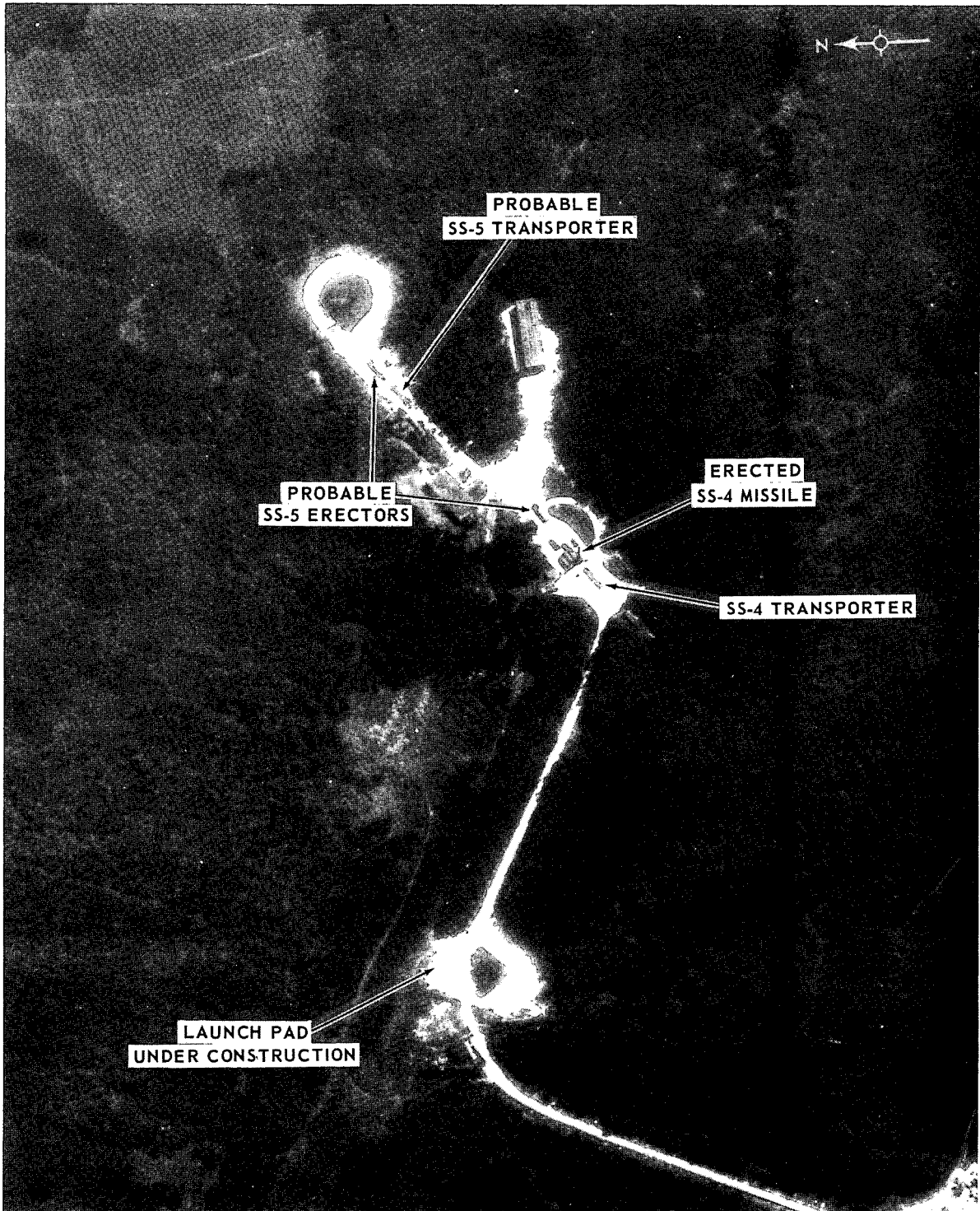
MISSION 4031, 17-24 AUGUST 1966

ATTACHMENT 5

TOP SECRET

MISSION 4031, 17-24 AUGUST 1966

ATTACHMENT 6



SSM TRAINING FACILITY, KOTOVSK, USSR

NPIC L-1719 (8/66)

TOP SECRET

**TOP SECRET**

**TOP SECRET**