

TOP SECRET

PHOTOGRAPHIC INTERPRETATION REPORT



**MISSION 4031
17-24 AUGUST 1966**

PART III

[Redacted]

25X1

AUGUST 1966

COPY 104

79 PAGES



25X1

GROUP 1 EXCLUDED FROM
AUTOMATIC DOWNGRADING
AND DECLASSIFICATION

TOP SECRET

Page Denied



TOP SECRET CHESS RUFF



MISSION 4031, 17-24 AUGUST 1966

TABLE OF CONTENTS

PREFACE	2
TRACK OF MISSION	4
HIGHLIGHTS	10
MISSILES	11
AIR FACILITIES	57
NUCLEAR ENERGY	59
NAVAL ACTIVITY/PORTS	60
MILITARY ACTIVITY	62
ATTACHMENTS	APPENDIX



TOP SECRET CHESS RUFF

MISSION 4031, 17-24 AUGUST 1966

OAK - PART III**MISSION 4031**PREFACE

THIS IS THE THIRD OF FOUR OAK REPORTS FOR MISSION 4031 AND PROVIDES INFORMATION ON THE HIGHEST PRIORITY COMMITTEE ON OVERHEAD RECONNAISSANCE (COMOR) TARGETS OBSERVED ON THE PHOTOGRAPHY. THE REMAINDER OF THE COMOR TARGETS COVERED ON THIS PHOTOGRAPHY WILL BE REPORTED IN A SERIES OF OAK SUPPLEMENTS.

TARGETS ARE ARRANGED IN THE OAK BY SUBJECT AND WITHIN EACH SUBJECT BY COMOR TARGET NUMBER. TARGETS OF OPPORTUNITY OBSERVED DURING THE OAK REPORTING PERIOD ARE LISTED NUMERICALLY UNDER THE APPROPRIATE SUBJECT AFTER THE LISTING OF COMOR TARGETS. LOCATIONS OF TARGETS IN THIS REPORT ARE INDICATED BY THE COUNTRY CODE PRECEDING THE COORDINATES.

SELECTED PHOTOGRAPHIC REFERENCES FOR EACH TARGET OBSERVED AND REPORTED FOLLOW THE DESCRIPTION OF THE TARGET. PASS NUMBERS, SUFFIXED WITH A FOR ASCENDING AND D FOR DESCENDING, ARE LISTED FIRST, FOLLOWED BY FRAMES WHICH ARE INDICATED BY THE FRAME NUMBER WITH AN INDEX NUMBER RUNNING CONSECUTIVELY FROM THE BEGINNING OF EACH PASS -- 4/8 FOR EXAMPLE, MEANS FRAME 4, INDEX 8. UNIVERSAL REFERENCE GRID COORDINATES FOR NEW TARGETS ARE GIVEN IN PARENTHESIS AFTER THE INDEX NUMBER TO WHICH THEY APPLY. THIS GRID IS IDENTIFIED AS UNIVERSAL GRID NO 1, FEB 64. SYMBOLS INDICATING CONDITIONS WHICH AFFECT THE APPEARANCE OF THE TARGET ON THE PHOTOGRAPHY ARE -- C (CLEAR), SC (SCATTERED CLOUD COVER), HC (HEAVY CLOUD COVER), H (HAZE), CS (CLOUD SHADOW), S (SNOW), O (OBLIQUITY), SD (SEMIDARKNESS), D (DARKNESS), GC (GROUND COVER), CF (CAMOUFLAGE), AND GR (GROUND RESOLUTION). COLOR COVERAGE IS DESIGNATED BY THE LETTER C IMMEDIATELY FOLLOWING FRAME NUMBERS.

INTERPRETABILITY OF THE PHOTOGRAPHY IS CATEGORIZED AS G (GOOD), F (FAIR), OR P (POOR). THE EXTENT OF PHOTOGRAPHIC COVERAGE IS DENOTED BY THE SYMBOLS T (TOTAL) OR PT (PARTIAL). THE MODE OF COVERAGE IS INDICATED BY ST (STEREO), PS (PARTIAL STEREO), OR NS (NON-STEREO).

THE INITIAL SCAN OF THE PHOTOGRAPHY IS ACCOMPLISHED IN A SHORT TIME AND PRIOR TO FINAL REFINEMENT OF EPHEMERIS DATA. CONSEQUENTLY, FUTURE DETAILED ANALYSIS MAY RESULT IN MINOR

TOP SECRET CHESS RUFF

TOP SECRET CHESS RUFF

MISSION 4031, 17-24 AUGUST 1966

ALTERATIONS. MOREOVER, RECIPIENTS ARE CAUTIONED THAT THE IDENTIFICATION OF TARGETS IS BASED PRIMARILY ON PHOTOGRAPHY AND DOES NOT CONSTITUTE A FINISHED INTELLIGENCE JUDGMENT.

TOP SECRET CHESS RUFF

Page Denied

Next 5 Page(s) In Document Denied

Highlights

TOP SECRET CHESS RUFF

MISSION 4031, 17-24 AUGUST 1966

HIGHLIGHTS

COMMENCING WITH THIS OAK, GRID COORDINATES WILL BE OMITTED FROM THE PHOTO REFERENCE LINE ON KH-7 MISSIONS, EXCEPT ON NEW TARGETS.

AS A RESULT OF A STEREO MIRROR MALFUNCTION AFTER PASS 14, ALL SUCCEEDING COVERAGE WAS IN A NON-STEREO MODE.

SOVIET OFFENSIVE MISSILE ACTIVITY

TWENTY-THREE SINGLE SILO SITES HAVE BEEN IDENTIFIED THUS FAR ON THIS MISSION -- 1 TYPE IIIC AT DOMBAROVSKIY, 1 TYPE IIIC AT KARTALY, 3 TYPE IIID AT KOSTROMA, 1 TYPE IIID AT OLOVYANNAYA, 5 TYPE IIID AT SVOBODNY AND 12 TYPE IIID AT TATISHCHEVO.

AT THE KAPUSTIN YAR/VLADIMIROVKA MISSILE TEST CENTER, THE SSM FACILITIES AND THE AKHTUBINSK/VLADIMIROVKA AIRFIELD ARE COVERED BY CLEAR, NON-STEREO PHOTOGRAPHY OF GOOD INTERPRETABILITY. A MISSILE EXERCISE IS OBSERVED AT LAUNCH AREA 1C AND 5C. CONSTRUCTION CONTINUES AT LAUNCH SITE 4C1 AND PROBABLE LAUNCH AREA 6C. PROBABLE MISSILE SUPPORT EQUIPMENT WAS OBSERVED ON RAIL CARS IN THE PROBABLE MISSILE ASSEMBLY AND CHECKOUT AREA. AN ASM-4 (KITCHEN) WAS IDENTIFIED IN THE MISSILE STORAGE AND HANDLING AREA NEAR THE AKHTUBINSK/VLADIMIROVKA AIRFIELD.

AT THE TYURATAM MISSILE TEST CENTER LAUNCH COMPLEX G, MODIFICATION AND CONSTRUCTION CONTINUES AT LAUNCH AREAS G1-G2 AND G3-G4. FOURTEEN, THEN 15 CYLINDRICAL OBJECTS, 65 FEET LONG, ARE POSITIONED WITHIN THE FENCE LINE AT LAUNCH AREA G5-G6. THREE SIMILAR OBJECTS ARE LOCATED AT THE POSSIBLE COMPONENT CHECKOUT/HANDLING FACILITY.

STATUS OF COMOR TARGET READOUT

THIS OAK REPORTS ON 180 COMOR TARGETS.

Missiles

25X1

TOP SECRET CHESS RUFF

MISSION 4031, 17-24 AUGUST 1966

25X1

MISSILES

TYURATAM MISSILE TEST CENTER

UR 4538N 06317E

NO NEW MISSILE FACILITIES IDENTIFIED ON PORTIONS OF THE SEARCH AREA COVERED.



TYURATAM LAUNCH COMPLEX F


UR 4601N 06305E

THREE VEHICLES/PIECES OF EQUIPMENT ARE PARKED WITHIN THE LOOP ROAD JUST EAST OF THE RIGHT SILO. NUMEROUS SMALL OBJECTS ARE ON OR NEAR THE HARDSTAND SURROUNDING THE SILOS. THE SITE APPEARS TO BE UNCHANGED SINCE



TYURATAM LAUNCH COMPLEX G

UR 4604N 06255E

LAUNCH AREA G1-G2 -- CONSTRUCTION CONTINUES. THE AREA BETWEEN PADS G1 AND G2 IS IN THE PROCESS OF BEING EXCAVATED AT SEVERAL POINTS. OPEN DITCHING CONTAINING CONDUIT IS OBSERVED, BUT IT CANNOT BE DETERMINED IF THIS IS NEW CONSTRUCTION OR REEXCAVATION OF ORIGINAL FACILITIES. A CYLINDER  IS LOCATED IN FRONT OF THE SMALL EARTH-MOUNDED BUILDING ON THE WEST SIDE OF THE READY BUILDING AT G1. THE GANTRIES ARE IN THEIR USUAL POSITIONS AT THE REAR OF THE PADS, AND THE POSSIBLE MISSILE/COMPONENTS FREQUENTLY SEEN ARE ON THE RAILS IN FRONT OF THE READY BUILDINGS. THE BUILDING UNDER CONSTRUCTION IN THE EXCAVATION FORWARD OF G1 APPEARS TO ENCOMPASS A CIRCULAR STRUCTURE WHICH IS SLIGHTLY OFFSET FROM THE CENTER, TOWARD THE RAIL SPUR APPROACHING FROM THE NW. THIS CIRCULAR STRUCTURE COULD BE A PEDESTAL OR A SILO. THE BUILDING APPEARS TO BE COMPARTMENTED IN A MANNER SIMILAR TO THAT OBSERVED IN THE HEADWORKS OF A TYPE IIIC SILO, BUT THE BUILDING AT PRESENT IS SMALLER, AND RECTANGULAR RATHER THAN SQUARE. A REVIEW OF EARLIER COVERAGES SHOWS NO EVIDENCE OF A SILO CORING OR SILO CONSTRUCTION, BUT THE SIMILARITY OF APPEARANCE TO TYPE IIIC HEADWORKS AND THE CIRCULAR STRUCTURE SUGGEST THAT THESE BUILDINGS MAY BE SILOS

25X1

25X1

25X1

TOP SECRET CHESS RUFF

MISSION 4031, 17-24 AUGUST 1966

UNDER CONSTRUCTION.

LAUNCH AREA G3-G4 -- CONSTRUCTION CONTINUES. THE DITCH, PREVIOUSLY REPORTED PARALLEL TO THE ORIENTATION OF THE FENCE ACROSS THE REAR OF THE LAUNCH AREA, CONTAINS CONDUIT WHICH ENTERS A LINEAR EARTH MOUND PARALLEL TO THE GANTRY TRACKS.

THE DITCH PREVIOUSLY REPORTED EXTENDING EASTWARD FROM PAD G3 NOW APPEARS TO HAVE BEEN EXTENDED UNDERNEATH THE PAD FOR A SHORT DISTANCE TO THE WEST. SIMILAR CONSTRUCTION IS NOW APPARENT AT PAD G4 AND THE ALIGNMENT OF CONDUIT SEGMENTS SUGGEST THAT A SIMILAR DITCH WILL PROBABLY BE OPENED FROM G4 TO THE CENTER OF THE LAUNCH AREA.

THE DITCH PREVIOUSLY REPORTED EXTENDING SOUTHWARD TOWARD THE L-SHAPED ELECTRONIC FACILITY NOW ENTERS 2 OF THE EARTH-MOUNDED BUILDINGS.

A STRUCTURE IS UNDER CONSTRUCTION FORWARD OF PAD G3, ADJACENT TO THE DITCH WHICH EXTENDS NORTHEASTWARD TOWARD THE FENCE LINE. ONE OF THE EARTH-MOUNDED TANKS IN THE CENTER OF THE LAUNCH AREA HAS BEEN REMOVED. AT PAD G4 THE ERECTING MECHANISM IS IN AN INCLINED POSITION. THE GANTRIES ARE LOCATED IN THEIR USUAL POSITION AT THE REAR OF THE PADS.

LAUNCH AREA G5-G6 -- [] - THE GANTRY IS LOCATED ON PAD G6 ALONG WITH A CYLINDRICAL OBJECT [] LONG AND A VEHICLE/PIECE OF EQUIPMENT. A PROBABLE MISSILE TRANSPORTER AND A 4-LEGGED APPARATUS WITH A RING NEAR ITS TOP ARE ON PAD G5. FOUR VEHICLES/PIECES OF EQUIPMENT ARE LOCATED IN THE SW CORNER OF THE LAUNCH AREA, AND 4 OTHERS ARE LOCATED ALONG THE EASTERN FENCE LINE.

25X1

FOURTEEN CYLINDERS APPROXIMATELY [] LONG ARE POSITIONED ALONG THE EAST FENCE LINE. ONE OF THESE IS LIGHT TONED AND APPEARS TO BE SMOOTH AND REGULARLY SHAPED. THE OTHER 13 HAVE A DARK MOTTLED APPEARANCE AND MAY BE SLIGHTLY DISTORTED.

25X1

[] -- NO SIGNIFICANT CHANGE SINCE PASS [] OBSERVED AT PAD G6. AT PAD G5, 2 LONG AND 2 SHORTER VEHICLES/PIECES OF EQUIPMENT ARE LOCATED ON THE PAD. IN ADDITION TO THE 4 LEGGED APPARATUS. FIVE VEHICLES/PIECES OF EQUIPMENT ARE LOCATED IN THE SW CORNER OF THE LAUNCH AREA, 7 ARE LOCATED IN THE NE CORNER OF THE LAUNCH AREA, AND 15 CYLINDERS ARE POSITIONED ALONG THE EASTERN FENCE LINE.

25X1

NO NEW CONSTRUCTION, CHANGES IN FACILITIES, OR PREVIOUSLY UNREPORTED FEATURES OBSERVED.

25X1

TOP SECRET CHESS RUFF

MISSION 4031, 17-24 AUGUST 1966

[redacted] -- [redacted] -- 5
VEHICLES/PIECES OF EQUIPMENT ARE PARKED IN FRONT OF THE EARTH-MOUNDED BUILDING IN THE SW CORNER OF THE FACILITY, AND A ROW OF SMALL VEHICLES/PIECES OF EQUIPMENT ARE PARKED AT THE NORTH END OF THE LARGE BUILDING. NO MISSILES, MISSILE-RELATED EQUIPMENT, NEW CONSTRUCTION, CHANGES IN FACILITIES, OR PREVIOUSLY UNREPORTED FEATURES OBSERVED.

25X1

[redacted] -- NOT COVERED.

UNIDENTIFIED FACILITY SOUTH OF THE [redacted]
[redacted] -- NO MISSILES, MISSILE-RELATED EQUIPMENT, NEW CONSTRUCTION, CHANGES IN FACILITIES, OR PREVIOUSLY UNREPORTED FEATURES OBSERVED.

25X1

[redacted] -- NOT COVERED.

REVETTED STORAGE AREA -- A U-SHAPED BUILDING IS UNDER CONSTRUCTION AT THE END OF THE DITCH REPORTED EXTENDING WESTWARD. A RECTANGULAR EXCAVATION IS ADJACENT TO THE DITCH ON ITS NORTH SIDE.

POSSIBLE COMPONENT CHECKOUT/HANDLING FACILITY -- 3 CYLINDERS APPROXIMATELY 65 FT IN LENGTH ARE PARKED ON THE WEST END OF THE LOOP ROAD SERVING THE DRIVE-THROUGH BUILDING. THREE SIMILAR CYLINDRICAL OBJECTS WERE OBSERVED IN THE SAME LOCATION ON [redacted] THEY APPEAR TO BE SIMILAR TO THOSE OBSERVED ALONG THE EAST FENCE LINE AT LAUNCH AREA G5-G6. A MISSILE RAIL TRANSPORTER AND A STRING OF APPROXIMATELY 10 RAIL CARS ARE ON THE RAIL SPUR. APPROXIMATELY 35 SMALL VEHICLES/PIECES OF EQUIPMENT ARE PARKED AT VARIOUS LOCATIONS IN THE FACILITY.

25X1

COMPLEX SUPPORT FACILITY -- 6 OPEN-TOPPED, PROBABLY CONCRETE-LINED BASINS HAVE BEEN CONSTRUCTED ON A KNOLL WSW OF THE SUPPORT FACILITY. THE BASINS ARE BOWL-SHAPED AND ARE CLOSELY SPACED IN 2 ROWS OF 3 BASINS. RAIL CARS ARE PARKED SINGLY AND IN STRINGS AT VARIOUS POINTS IN THE SUPPORT FACILITY BUT NO UNUSUAL CARS HAVE BEEN IDENTIFIED. DITCHING HAS BEEN OPENED FROM THE VICINITY OF THE 2 EARTH-MOUNDED TANKS ON THE NORTH SIDE OF THE COMPLEX MAIN ROAD. IT EXTENDS EASTWARD TO THE ACCESS ROAD TO LAUNCH AREA G3-G4, AND THEN EXTENDS SSE PARALLEL TO THE ACCESS ROAD, TO A POINT NEAR THE INTERSECTION OF THE ACCESS ROAD AND THE COMPLEX MAIN ROAD.

NO SIGNIFICANT CHANGE OBSERVED.

TOP SECRET CHESS RUFF

MISSION 4031, 17-24 AUGUST 1966

(SEE ATTACHMENT)



25X1

TYURATAM LAUNCH GROUP K (SITE K1-K2)

UR 4601N 06303E



SITE K1 -- -- THE SILO DOOR IS CLOSED. FOUR SMALL VEHICLES/PIECES OF EQUIPMENT ARE LOCATED NEAR THE SILO AND A LONG VEHICLE/PIECE OF EQUIPMENT IS PARKED ON THE APRON JUST NORTH OF THE SILO. TWO VEHICLES/PIECES OF EQUIPMENT ARE PARKED WEST OF THE LOOP ROAD.

SITE K2 -- THE SILO DOOR IS OPEN. A SMALL VEHICLE/PIECE OF EQUIPMENT WITH A TALL, INCLINED MEMBER IS PARKED AT THE SILO. TWO CRANES ARE PARKED ON THE APRON NORTH OF THE SILO AND 6 SMALL VEHICLES/PIECES OF EQUIPMENT ARE PARKED IN THE VICINITY OF THE SILO. APPROXIMATELY 17 VEHICLES/PIECES OF EQUIPMENT ARE PARKED NEAR THE BUILDINGS AT THE ENTRANCE TO THE SITE.

SITE K2 -- THE SMALL VEHICLE/PIECE OF EQUIPMENT WITH TALL INCLINED MEMBER IS NO LONGER PRESENT AND 1 OF THE CRANES IS PARKED AT THE SILO. NO OTHER SIGNIFICANT CHANGES APPARENT. THERE ARE APPROXIMATELY 12 VEHICLES/PIECES OF EQUIPMENT NEAR THE BUILDINGS AT THE ENTRANCE TO THE SITE.

NO NEW CONSTRUCTION, CHANGES IN FACILITIES, OR PREVIOUSLY UNREPORTED FEATURES OBSERVED.



25X1

TYURATAM LAUNCH GROUP K (SITE K3)

UR 4604N 06256E



THE HARDSTANDS ALONG THE SOUTH FENCE LINE APPEAR TO BE COMPLETE AND ARE SEPARATELY SECURED FROM THE REST OF THE LAUNCH SITE. NEAR THE EASTERN END OF THIS SECURED AREA IS A SMALL, EARTH-MOUNDED STRUCTURE SERVED BY A WALKWAY.

THE SILO DOOR IS CLOSED AND APPROXIMATELY 19 VEHICLES/PIECES OF EQUIPMENT ARE LOCATED THROUGHOUT THE SITE.

NO NEW CONSTRUCTION, CHANGES IN FACILITIES, OR PREVIOUSLY UNREPORTED FEATURES OBSERVED.



25X1

TOP SECRET CHESS RUFF

MISSION 4031, 17-24 AUGUST 1966

TYURATAM LAUNCH GROUP L (SITE L1)

UR 4603N 06259E

[REDACTED] - THE SILO DOOR IS OPEN AND A RING IS LYING ON THE APRON ADJACENT TO THE SILO.

[REDACTED] - THE SILO DOOR IS CLOSED AND A RING IS LYING ON THE APRON ADJACENT TO THE SILO. A LONG VEHICLE/PIECE OF EQUIPMENT AND A CRANE ARE PARKED ON THE LEVEL ACCESS.

NO NEW CONSTRUCTION, CHANGES IN FACILITIES, OR PREVIOUSLY UNREPORTED FEATURES OBSERVED.

TYURATAM LAUNCH GROUP L (SITE L2) THE SILO CLOSED. ONE SMALL VEHICLE/PIECE OF EQUIPMENT RING ARE ON THE SILO APRON.

NO NEW CONSTRUCTION, CHANGES IN FACILITIES, OR PREVIOUSLY UNREPORTED FEATURES OBSERVED.

TYURATAM LAUNCH GROUP L (SITE L3)

UR 4604N 06305E

TWO SMALL VEHICLES/PIECES OF EQUIPMENT ARE ON THE APRON ON [REDACTED]

NO NEW CONSTRUCTION, CHANGES IN FACILITIES, OR PREVIOUSLY UNREPORTED FEATURES OBSERVED.

TYURATAM LAUNCH GROUP L (SITE L4)

UR 4601N 06303E

NO MISSILES, MISSILE-RELATED EQUIPMENT, NEW CONSTRUCTION, CHANGES IN FACILITIES, OR PREVIOUSLY UNREPORTED FEATURES OBSERVED.

TOP SECRET CHESS RUFF

[Redacted]

[Redacted]

MISSION 4031, 17-24 AUGUST 1966

[Redacted]

25X1

TYURATAM LAUNCH GROUP L (SITE L5) UR 4559N 06257E

NO MISSILES, MISSILE-RELATED EQUIPMENT, NEW CONSTRUCTION, CHANGES IN FACILITIES, OR PREVIOUSLY UNREPORTED FEATURES OBSERVED.

[Redacted]

TYURATAM LAUNCH GROUP L (SITE L6) UR 4601N 06253E

[Redacted] -- A VEHICLE/PIECE OF EQUIPMENT IS ON THE APRON AND A VEHICLE IS ON THE ACCESS ROAD JUST OUTSIDE THE FENCE.

[Redacted] -- NO MISSILES, MISSILE-RELATED EQUIPMENT, NEW CONSTRUCTION, CHANGES IN FACILITIES, OR PREVIOUSLY UNREPORTED FEATURES OBSERVED.

[Redacted]

TYURATAM LAUNCH GROUP L (SITE L7) UR 4605N 06255E

ONE LONG AND SEVERAL SMALL VEHICLES/PIECES OF EQUIPMENT ARE ON THE GRADED ACCESS.

NO NEW CONSTRUCTION, CHANGES IN FACILITIES, OR PREVIOUSLY UNREPORTED FEATURES OBSERVED.

[Redacted]

TYURATAM LAUNCH GROUP L (SITE L8) UR 4601N 06307E

[Redacted] - 2 VEHICLES/PIECES OF EQUIPMENT, [Redacted] LONG, ARE ON THE APRON AND A RING IS ON THE GRADED ACCESS.

25X1

[Redacted] THE VEHICLES/PIECES OF EQUIPMENT HAVE BEEN REMOVED BUT THE RING REMAINS.

NO NEW CONSTRUCTION, CHANGES IN FACILITIES, OR

[Redacted]

25X1

TOP SECRET CHESS RUFF

MISSION 4031, 17-24 AUGUST 1966

PREVIOUSLY UNREPORTED FEATURES OBSERVED.

[Redacted]

25X1

TYURATAM LAUNCH GROUP L (SITE L9) : UR 4558N 06306E

[Redacted] -- 2 POSSIBLE VEHICLES/PIECES OF EQUIPMENT ARE ON THE APRON.

[Redacted] -- 1 VEHICLE/PIECE OF EQUIPMENT IS LOCATED ON THE GRADED ACCESS AND ANOTHER IS LOCATED WEST OF THE GRADED ACCESS.

NO NEW CONSTRUCTION, CHANGES IN FACILITIES, OR PREVIOUSLY UNREPORTED FEATURES OBSERVED.

[Redacted]

25X1

TYURATAM LAUNCH GROUP L (SITE L10) : UR 4557N 06301E

ONE SMALL VEHICLE/PIECE OF EQUIPMENT IS ON THE ACCESS ROAD AT THE ENTRANCE TO THE SITE ON PASS [Redacted]

25X1

NO NEW CONSTRUCTION, CHANGES IN FACILITIES, OR PREVIOUSLY UNREPORTED FEATURES OBSERVED.

[Redacted]

25X1

TYURATAM LAUNCH GROUP M (SITES M1,M2) UR 4603N 06302E

SITE M1 -- DITCHING HAS BEEN OPENED FROM SITE M1 WESTWARD TO THE VICINITY OF SITE L1. NO HEADWORKS HAVE BEEN CONSTRUCTED AT M1.

SITE M2 -- A CRANE IS IN THE SILO EXCAVATION. NO SILO HEADWORKS HAVE BEEN CONSTRUCTED.

NO MISSILES, MISSILE-RELATED EQUIPMENT, NEW CONSTRUCTION, CHANGES IN FACILITIES, OR PREVIOUSLY UNREPORTED FEATURES OBSERVED.

[Redacted]

TOP SECRET CHESS RUFF

MISSION 4031, 17-24 AUGUST 1966

TYURATAM LAUNCH GROUP M (SITE M3)

UR 4602N 06306E

NO MISSILES, MISSILE-RELATED EQUIPMENT, NEW CONSTRUCTION, CHANGES IN FACILITIES, OR PREVIOUSLY UNREPORTED FEATURES OBSERVED.

[Redacted]

TYURATAM LAUNCH GROUP N (SITE N1)

UR 4602N 06303E

[Redacted] - 6 VEHICLES/PIECES OF EQUIPMENT ARE PARKED IN AND ABOUT THE SITE. THE SILO DOOR IS OPEN.

[Redacted] - THE 6 VEHICLES/PIECES OF EQUIPMENT ARE IN THE SAME POSITION. A CRANE IS NOW PARKED ON THE LEVEL ACCESS. THE SILO DOOR IS OPEN.

NO NEW CONSTRUCTION, CHANGES IN FACILITIES, OR PREVIOUSLY UNREPORTED FEATURES OBSERVED.

[Redacted]

TYURATAM LAUNCH GROUP N (SITE N2-N3)

UR 4604N 06257E

[Redacted] - BOTH SILO DOORS ARE OPEN. AT SILO N2, A RING AND 2 VEHICLES/PIECES OF EQUIPMENT ARE ON THE APRON NEAR THE SILO. AT SILO N3, 2 VEHICLES/PIECES OF EQUIPMENT ARE ON THE APRON NEAR THE SILO. APPROXIMATELY 8 OTHER SMALL VEHICLES/PIECES OF EQUIPMENT ARE LOCATED THROUGHOUT THE SITE.

[Redacted] - BOTH SILO DOORS ARE OPEN. A RING AND 1 VEHICLE/PIECE OF EQUIPMENT ARE ON THE APRON NEAR SILO N2 AND 2 SMALL VEHICLES/PIECES OF EQUIPMENT ARE ON THE APRON NEAR SILO N3. APPROXIMATELY 6 OTHER SMALL VEHICLES/PIECES OF EQUIPMENT ARE LOCATED ABOUT THE SITE.

NO NEW CONSTRUCTION, CHANGES IN FACILITIES, OR PREVIOUSLY UNREPORTED FEATURES OBSERVED.

[Redacted]

TOP SECRET CHESH RUFF



MISSION 4031, 17-24 AUGUST 1966

UZHUR ICBM COMPLEX

UR 5517N 08949E



CONTINUING ANALYSIS OF THE UZHUR ICBM COMPLEX REVEALS A GROUP OF 10 BUILDINGS THAT CLOSELY RESEMBLES A SITE SUPPORT FACILITY ON THE EXTREME EDGE OF THE FRAME OF PHOTOGRAPHY. NO LAUNCH SILO CAN BE IDENTIFIED, HOWEVER, THIS IS PROBABLY DUE TO THE LIMITS OF THE PHOTOGRAPHIC COVERAGE. THE GROUP OF 10 BUILDINGS IS LOCATED APPROXIMATELY 3 NM SE OF THE COMPLEX SUPPORT FACILITY AT 55-15N 089-53E.

A NEW SITE IN THIS LOCATION WOULD INDICATE THE START OF A FIFTH LAUNCH GROUP, HOWEVER, NO POSITIVE IDENTIFICATION CAN BE MADE ON THE BASIS OF AVAILABLE PHOTOGRAPHY.



OLOVYANNAYA ICBM LAUNCH SITE 1

UR 5054N 11548E

NO MISSILES, MISSILE-RELATED EQUIPMENT, NEW CONSTRUCTION, CHANGES IN FACILITIES, OR PREVIOUSLY UNREPORTED FEATURES OBSERVED.



OLOVYANNAYA ICBM LAUNCH SITE 3

UR 5101N 11558E

FOUR PROBABLE VEHICLES AND 5 VEHICLES/PIECES OF EQUIPMENT ARE IN VICINITY OF THE MISSILE HANDLING BUILDINGS.

NO MISSILES, MISSILE-RELATED EQUIPMENT, NEW CONSTRUCTION, CHANGES IN FACILITIES, OR PREVIOUSLY UNREPORTED FEATURES OBSERVED.



OLOVYANNAYA ICBM LAUNCH SITE 9

UR 5103N 11559E

SITE IS NOW COMPLETE.

NO MISSILES, MISSILE-RELATED EQUIPMENT, NEW CONSTRUCTION, CHANGES IN FACILITIES, OR PREVIOUSLY UNREPORTED FEATURES OBSERVED.

TOP SECRET CHESH RUFF



TOP SECRET CHESS RUFF

MISSION 4031, 17-24 AUGUST 1966

25X1

25X1

OLOVYANNAYA ICBM LAUNCH SITE 10 UR 5105N 11559E

SITE IS NOW COMPLETE.

NO MISSILES, MISSILE-RELATED EQUIPMENT, NEW CONSTRUCTION, CHANGES IN FACILITIES, OR PREVIOUSLY UNREPORTED FEATURES OBSERVED.

25X1

OLOVYANNAYA ICBM LAUNCH SITE 14 UR 5100N 11601E

SITE IS NOW COMPLETE. A POSSIBLE VEHICLE IS ON GRADED ACCESS.

NO MISSILES, MISSILE-RELATED EQUIPMENT, NEW CONSTRUCTION, CHANGES IN FACILITIES, OR PREVIOUSLY UNREPORTED FEATURES OBSERVED.

25X1

OLOVYANNAYA ICBM LAUNCH SITE 17 UR 5056N 11558E

SITE IS NOW COMPLETE. TWO POSSIBLE VEHICLES ARE ON SILO APRON. CONTROL BUILDING HAS BEEN EARTH-MOUNDED AND CONSTRUCTION CONTINUES ON L-SHAPED ELECTRONIC FACILITY.

NO MISSILE, MISSILE-RELATED EQUIPMENT, OR PREVIOUSLY UNREPORTED FEATURES OBSERVED.

25X1

OLOVYANNAYA ICBM LAUNCH SITE 18 UR 5055N 11552E

SITE IS NOW COMPLETE. A VEHICLE/PIECE OF EQUIPMENT IS ON THE END OF THE GRADED ACCESS.

NO NEW CONSTRUCTION, CHANGES IN FACILITIES, OR PREVIOUSLY UNREPORTED FEATURES OBSERVED.

25X1

25X1

25X1

TOP SECRET CHESS RUFF

MISSION 4031, 17-24 AUGUST 1966

25X1

OLOVYANNAYA ICBM LAUNCH SITE 19

UR 5053N 11556E

SITE IS NOW COMPLETE.

NO MISSILES, MISSILE-RELATED EQUIPMENT, NEW CONSTRUCTION, CHANGES IN FACILITIES, OR PREVIOUSLY UNREPORTED FEATURES OBSERVED.

[Redacted]

OLOVYANNAYA ICBM LAUNCH SITE 20

UR 5059N 11554E

SITE IS NOW COMPLETE.

NO MISSILES, MISSILE-RELATED EQUIPMENT, NEW CONSTRUCTION, CHANGES IN FACILITIES, OR PREVIOUSLY UNREPORTED FEATURES OBSERVED.

[Redacted]

OLOVYANNAYA ICBM LAUNCH SITE 21

UR 5057N 11549E

TWO POSSIBLE VEHICLES ARE ON THE GRADED ACCESS.

NO MISSILES, MISSILE-RELATED EQUIPMENT, NEW CONSTRUCTION, CHANGES IN FACILITIES, OR PREVIOUSLY UNREPORTED FEATURES OBSERVED.

[Redacted]

OLOVYANNAYA ICBM LAUNCH SITE 22

UR 5100N 11547E

TWO SMALL VEHICLES ARE ON SILO APRON.

NO MISSILES, MISSILE-RELATED EQUIPMENT, NEW CONSTRUCTION, CHANGES IN FACILITIES, OR PREVIOUSLY UNREPORTED FEATURES OBSERVED.

[Redacted]

OLOVYANNAYA ICBM LAUNCH SITE 23

UR 5101N 11551E

SITE IS COMPLETE. A VEHICLE, POSSIBLY VAN-TYPE, IS SITUATED NEAR THE END OF THE GRADED ACCESS. A LONG LOW-BED VEHICLE IS ON THE ACCESS TURN-AROUND WITH A

25X1

25X1



TOP SECRET CHESS RUFF



MISSION 4031, 17-24 AUGUST 1966

SMALLER VEHICLE ALONGSIDE. A POSSIBLE VEHICLE/PIECE OF EQUIPMENT IS BEHIND THE SILO DOOR. NO MISSILES OR NEW CONSTRUCTION OBSERVED.

25X1



25X1

OLOVYANNAYA ICBM LAUNCH SITE 24

UR 5051N 11551E



SITE IS IN A LATE STAGE OF CONSTRUCTION. ADJACENT CONTROL FACILITY CONSISTS OF AN ELONGATED CONTROL BUILDING IN AN EXCAVATION, AN L-SHAPED ELECTRONIC FACILITY UNDER CONSTRUCTION, AN ARCHED-ROOF BUILDING WITH 2 ENTRANCEWAYS, AND A SHALLOW EXCAVATION CONTAINING 2 TANK-LIKE OBJECTS. A SECOND EXCAVATION IS NW OF CONTROL BUILDING AND HAS 2 RECTANGULAR CUTS IN THE BOTTOM AND 2 TANK-LIKE OBJECTS ON ITS LIP. IN THE SEPARATELY SECURED MISSILE HANDLING AND CHECKOUT AREA THERE ARE 8 MAJOR BUILDINGS -- 2 DRIVE-THROUGH, 2 DRIVE-IN, 1 DRIVE-IN OR DRIVE-THROUGH, 2 UNDETERMINED, AND 1 SMALL BUILDING UNDER CONSTRUCTION. THREE LONG VEHICLES ARE IN FRONT OF THE SOUTHERNMOST DRIVE-IN BUILDING. SEVEN PIECES OF EQUIPMENT ARE ALONGSIDE THIS BUILDING.

25X1

25X1



25X1

NO MISSILES OBSERVED.

25X1



25X1

OLOVYANNAYA ICBM LAUNCH SITE 25

UR 5043N 11544E



SITE IS NOW COMPLETE.

FOUR EXCAVATIONS ARE SITUATED ABOUT THE GRADED ACCESS IN APPROXIMATELY THE SAME POSITION AS THE 4 MOUNDS COMMON TO TATISHCHEVO IIID SITES. THE CONTROL FACILITY NOW CONSISTS OF A CONTROL BUILDING AND 4 TANK-LIKE OBJECTS IN AN EXCAVATION, AN ARCHED-ROOF BUILDING ON THE EDGE OF THE EXCAVATION, 2 SEPARATELY SECURED EARTH-MOUNDED ARCHED-ROOF BUILDINGS, AND A UNIQUE T-SHAPED ELECTRONICS FACILITY INSTEAD OF THE USUAL L-SHAPE.

THE ELECTRONICS FACILITY CONSISTS OF 3 ANTENNA POSITIONS IN A LINE JOINED TO THE CONTROL FACILITY BY A BURIED CABLE. A HOUSING/SUPPORT AREA IS NORTH OF THE SITE AND CONSISTS OF 15 MAJOR BUILDINGS, A PROBABLE SEMI-BURIED BUILDING, AND A MOTOR POOL CONTAINING AT



25X1

25X1

TOP SECRET CHESS RUFF

MISSION 4031, 17-24 AUGUST 1966

LEAST 33 VEHICLES/PIECES OF EQUIPMENT WITH 2 ASSOCIATED BUILDINGS. NO MISSILES OBSERVED.

25X1

25X1

OLOVYANNAYA ICBM LAUNCH SITE 27

UR 5047N 11545E

SITE REMAINS IN A LATE STAGE OF CONSTRUCTION. A SMALL STRUCTURE IS SITUATED IN AN EXCAVATION ON THE EAST SIDE OF THE ACCESS. A SILO DOOR IS ON RAILS IN THE OPEN POSITION. THREE EXCAVATIONS ARE SITUATED ABOUT THE GRADED ACCESS IN POSITION SIMILAR TO THE MOUNDS FOUND AT TATISHCHEVO IIID SITES. NO MISSILES OR MISSILE-RELATED EQUIPMENT OBSERVED.

25X1

OLOVYANNAYA ICBM LAUNCH SITE 28

UR 5045N 11549E

SITE REMAINS IN A LATE STAGE OF CONSTRUCTION. A SMALL STRUCTURE IS SITUATED IN AN EXCAVATION ON THE EAST SIDE OF THE ACCESS. A SILO DOOR IS ON THE RAILS IN THE OPEN POSITION. A DISC-OR CONE-SHAPED OBJECT IS SITUATED ON THE DOOR RAILS. NO MISSILES OR MISSILE-RELATED EQUIPMENT OBSERVED.

25X1

OLOVYANNAYA ICBM LAUNCH SITE 29

UR 5041N 11550E

SITE REMAINS IN A LATE STAGE OF CONSTRUCTION. A VEHICLE/PIECE OF EQUIPMENT IS ON THE SILO APRON. A SILO DOOR IS UNDER CONSTRUCTION ON THE RAILS. NO MISSILES OR MISSILE-RELATED EQUIPMENT OBSERVED.

25X1

OLOVYANNAYA ICBM LAUNCH SITE 32

UR 5039N 11549E

SITE REMAINS IN A LATE STAGE OF CONSTRUCTION. A PARTIALLY COMPLETED DOOR IS ON THE RAILS IN THE CLOSED POSITION. AN EXCAVATION IS SITUATED ON THE EAST SIDE OF THE ACCESS. GRADING OF THE ACCESS IS INCOMPLETE. NO MISSILES OR MISSILE-RELATED EQUIPMENT OBSERVED.

TOP SECRET CHESS RUFF

MISSION 4031, 17-24 AUGUST 1966

OLOVYANNAYA ICBM LAUNCH SITE 35

UR 5050N 11556E

SITE IS IN A LATE STAGE OF CONSTRUCTION. A SMALL STRUCTURE IS IN AN EXCAVATION ON THE WEST SIDE OF THE ACCESS. ACCESS GRADING IS INCOMPLETE. AN ARCHED-ROOF BUILDING WITH AN ENTRANCEWAY IS SITUATED BETWEEN THE SECURITY FENCES. NO MISSILES OR MISSILE-RELATED EQUIPMENT OBSERVED.

OLOVYANNAYA ICBM LAUNCH SITE 36

UR 5048N 11557E

SITE CONTINUES IN A MID-STAGE OF CONSTRUCTION. FOOTINGS FOR THE SILO DOOR RAILS ARE VISIBLE. A SMALL STRUCTURE IS SITUATED IN AN EXCAVATION SE OF THE SILO. AN ARCHED-ROOF BUILDING WITH AN ENTRANCEWAY IS SITUATED BETWEEN THE SECURITY FENCES. NO MISSILES OR MISSILE-RELATED EQUIPMENT OBSERVED.

OLOVYANNAYA ICBM LAUNCH SITE 37

UR 5047N 11554E

SITE CONTINUES IN A MID-STAGE OF CONSTRUCTION. A SMALL STRUCTURE IS IN AN EXCAVATION SOUTH OF THE SILO. AN ARCHED-ROOF BUILDING WITH AN ENTRANCEWAY IS SITUATED BETWEEN THE SECURITY FENCES. NO MISSILES OR MISSILE-RELATED EQUIPMENT OBSERVED.

OLOVYANNAYA ICBM LAUNCH SITE 38

UR 5049N 11551E

SITE REMAINS IN A MID-STAGE OF CONSTRUCTION. ACCESS GRADING IS INCOMPLETE. A SMALL STRUCTURE IS IN AN EXCAVATION ON WEST SIDE OF ACCESS. A POSSIBLE CRANE IS ON A GRADED ACCESS NEXT TO SILO. NO MISSILES OR MISSILE-RELATED EQUIPMENT OBSERVED.

TOP SECRET CHESS RUFF



MISSION 4031, 17-24 AUGUST 1966

OLOVYANNAYA ICBM LAUNCH SITE 45

UR 5040N 11554E

IDENTIFICATION ONLY.



OLOVYANNAYA ICBM LAUNCH SITE 51

UR 5042N 11557E

SITE CONTINUES IN A MID-STAGE OF CONSTRUCTION. A SMALL STRUCTURE IS IN AN EXCAVATION ON THE EAST SIDE OF THE ACCESS. ACCESS GRADING IS INCOMPLETE. NO MISSILES OR MISSILE-RELATED EQUIPMENT OBSERVED.



OLOVYANNAYA ICBM LAUNCH SITE 61

UR 5037N 11553E

SITE CONTINUES IN A MID-STAGE OF CONSTRUCTION. A SMALL EXCAVATION IS SE OF THE SILO. A BUILDING IS UNDER CONSTRUCTION BETWEEN THE 2 SECURITY FENCES. NO MISSILES OR MISSILE-RELATED EQUIPMENT OBSERVED.



OLOVYANNAYA ICBM LAUNCH SITE 63

UR 5112N 11600E

LAUNCH SITE IS CONFIRMED AND IS IN A MID-STAGE OF CONSTRUCTION. TWO BUILDINGS ARE UNDER CONSTRUCTION OUTSIDE THE 2 SECURITY FENCES SW OF THE SILO. AN ARCHED-ROOF BUILDING IS UNDER CONSTRUCTION ON THE EDGE OF THE PROBABLE CONTROL BUILDING EXCAVATION. AREA ENCOMPASSED BY SECURITY FENCING IS SUFFICIENT TO ACCOMMODATE AN L-SHAPED ELECTRONIC FACILITY. THE HOUSING/SUPPORT AREA CONTAINS 9 MAJOR BUILDINGS AND 1 POSSIBLY SEMI-BURIED BUILDING. NO MISSILES OR MISSILE-RELATED EQUIPMENT OBSERVED.



OLOVYANNAYA ICBM LAUNCH SITE 64

UR 5034N 11553E

SITE IS IN A MID-STAGE OF CONSTRUCTION. A SMALL EXCAVATION IS SE OF THE SILO. A BUILDING IS UNDER CONSTRUCTION BETWEEN THE 2 SECURITY FENCES. NO MISSILES OR MISSILE-RELATED EQUIPMENT OBSERVED.



TOP SECRET CHESS RUFF



TOP SECRET CHESSE RUFF



MISSION 4031, 17-24 AUGUST 1966

25X1



25X1

OLOVYANNAYA ICBM LAUNCH SITE 65

UR 5032N 11549E

SITE IS IN A MID-STAGE OF CONSTRUCTION. A SMALL STRUCTURE IS IN AN EXCAVATION NORTH OF THE SILO. A BUILDING IS UNDER CONSTRUCTION BETWEEN THE 2 SECURITY FENCES. NO MISSILES OR MISSILE-RELATED EQUIPMENT OBSERVED.



OLOVYANNAYA ICBM LAUNCH SITE 66

UR 5109N 11552E

LAUNCH SITE REMAINS IN A MID-STAGE OF CONSTRUCTION. A BUILDING IS UNDER CONSTRUCTION BETWEEN THE 2 SECURITY FENCES. NO MISSILE OR MISSILE-RELATED EQUIPMENT OBSERVED.

NO MISSILES, MISSILE-RELATED EQUIPMENT, NEW CONSTRUCTION, CHANGES IN FACILITIES, OR PREVIOUSLY UNREPORTED FEATURES OBSERVED.



OLOVYANNAYA ICBM LAUNCH SITE 67

UR 5106N 11550E

LAUNCH SITE IS IN A MID-STAGE OF CONSTRUCTION. A BUILDING FOUNDATION IS UNDER CONSTRUCTION BETWEEN THE SECURITY FENCES. NEARBY IS A SMALL EXCAVATION. A VEHICLE/PIECE OF EQUIPMENT IS IN THE SILO EXCAVATION. NO MISSILES OR MISSILE-RELATED EQUIPMENT OBSERVED.



OLOVYANNAYA ICBM LAUNCH SITE 68

UR 5108N 11557E

SITE CONTINUES IN A MID-STAGE OF CONSTRUCTION. A BUILDING IS UNDER CONSTRUCTION BETWEEN THE 2 SECURITY FENCES. A SMALL STRUCTURE IS IN AN EXCAVATION BETWEEN THE FENCES SE OF THE SILO. NO MISSILES OR MISSILE-RELATED EQUIPMENT OBSERVED.



25X1

TOP SECRET CHESSE RUFF



25X1

TOP SECRET CHESS RUFF

MISSION 4031, 17-24 AUGUST 1966

OLOVYANNAYA ICBM LAUNCH SITE 69

UR 5105N 11555E

SITE CONTINUES IN A MID-STAGE OF CONSTRUCTION. A SMALL STRUCTURE IS UNDER CONSTRUCTION IN AN EXCAVATION BETWEEN THE 2 SECURITY FENCES SE OF THE SILO. A BUILDING IS UNDER CONSTRUCTION BETWEEN THE SECURITY FENCES. NO MISSILES OR MISSILE-RELATED EQUIPMENT OBSERVED.

OLOVYANNAYA ICBM LAUNCH SITE 70

UR 5113N 11555E

SITE CAN NOW BE CONFIRMED AND IS IN AN EARLY STAGE OF CONSTRUCTION. A SILO CORE IS VISIBLE IN THE BOTTOM OF EXCAVATION AND A CRANE IS ON THE EDGE OF THE EXCAVATION. SITE IS DOUBLE FENCED. NO MISSILES OR MISSILE-RELATED EQUIPMENT OBSERVED.

OLOVYANNAYA ICBM LAUNCH SITE 72

UR 5110N 11602E

SITE IS IN A MID-STAGE OF CONSTRUCTION. A BUILDING IS UNDER CONSTRUCTION BETWEEN THE 2 SECURITY FENCES. NO MISSILES OR MISSILE-RELATED EQUIPMENT OBSERVED.

OLOVYANNAYA ICBM LAUNCH SITE 73

UR 5035N 11549E

SITE CONTINUES IN A MID-STAGE OF CONSTRUCTION. A SMALL EXCAVATION IS SOUTH OF THE SILO. A BUILDING IS SITUATED BETWEEN THE 2 SECURITY FENCES. NO MISSILES OR MISSILE-RELATED EQUIPMENT OBSERVED.

OLOVYANNAYA ICBM COMPLEX SUPPORT FACILITY UR 5049N 11550E

NO MISSILES, MISSILE-RELATED EQUIPMENT, NEW CONSTRUCTION, CHANGES IN FACILITIES, OR PREVIOUSLY UNREPORTED FEATURES OBSERVED.

25X1

TOP SECRET CHESS RUFF

MISSION 4031, 17-24 AUGUST 1966

OLOVYANNAYA ICBM RAIL-TO-ROAD TSFR POINT UR 5050N 11552E

THE 2 STRUCTURES UNDER CONSTRUCTION IN EXCAVATIONS, REPORTED ON [REDACTED] ARE NOW COMPLETE AND ARE ARCH-ROOFED. ONE IS EARTH-MOUNDED AND THE OTHER PARTIALLY EARTH-MOUNDED. NINE PROBABLE FUEL TRUCKS, 6 PROBABLE CANVAS-COVERED VEHICLES, AND 6 SMALL TANK TRUCKS ARE IN THE MOTOR POOL NE OF THE TRANSFER POINT. NO MISSILES OBSERVED.

KARTALY ICBM COMPLEX

UR 5302N 06034E

CONTINUING ANALYSIS OF THE KARTALY ICBM COMPLEX REVEALS A NEWLY IDENTIFIED TYPE IIIC LAUNCH SITE (27) ON THE NORTH SIDE OF THE RAIL-TO-ROAD TRANSFER POINT AT 53-01N 060-33E. SITE 27 IS IN A MID-STAGE OF CONSTRUCTION.

TATISHCHEVO ICBM COMPLEX

UR 5140N 04534E

TWELVE NEW TYPE IIID LAUNCH SITES (INCLUDING 1 PROBABLE AND 1 POSSIBLE SITE) ARE NEWLY IDENTIFIED AND LAUNCH SITE 97 CAN BE CONFIRMED IN A MID-STAGE OF CONSTRUCTION. A NEW LAUNCH GROUP, J, CAN BE CONFIRMED WITH SITE 81 AS THE CONTROL. OF THE 12 NEW LAUNCH SITES, SITES 105-107 ARE IN A MID-STAGE OF CONSTRUCTION AND THE OTHER 9 ARE IN AN EARLY STAGE. SITES 104-108 WERE OBSERVED ON [REDACTED] AND THE OTHER 7 SITES ON PASS

GEOGRAPHIC COORDINATES AND PHOTOGRAPHIC REFERENCES FOR THESE SITES --



TOP SECRET CHESS RUFF

TOP SECRET CHESS RUFF

MISSION 4031, 17-24 AUGUST 1966

GRADING ACTIVITY IS IN PROGRESS APPROXIMATELY 5.5 NM NE OF CONTROL SITE 81 BETWEEN SITES 99 AND 109. AREA WAS NEGATED ON [REDACTED] NO OTHER MISSILE FACILITIES OBSERVED IN THE AREA COVERED BY PHOTOGRAPHY.

[REDACTED]

TATISHCHEVO ICBM LAUNCH SITE 1

UR 5148N 04539E

NO MISSILES, MISSILE-RELATED EQUIPMENT, NEW CONSTRUCTION, CHANGES IN FACILITIES, OR PREVIOUSLY UNREPORTED FEATURES OBSERVED.

[REDACTED]

TATISHCHEVO ICBM LAUNCH SITE 2

UR 5151N 04541E

NO MISSILES, MISSILE-RELATED EQUIPMENT, NEW CONSTRUCTION, CHANGES IN FACILITIES, OR PREVIOUSLY UNREPORTED FEATURES OBSERVED.

[REDACTED]

TATISHCHEVO ICBM LAUNCH SITE 5

UR 5145N 04541E

NO MISSILES, MISSILE-RELATED EQUIPMENT, NEW CONSTRUCTION, CHANGES IN FACILITIES, OR PREVIOUSLY UNREPORTED FEATURES OBSERVED.

[REDACTED]

TATISHCHEVO ICBM LAUNCH SITE 6

UR 5144N 04535E

SILO APRON IS BEING PAVED.

NO MISSILES, MISSILE-RELATED EQUIPMENT, NEW CONSTRUCTION, CHANGES IN FACILITIES, OR PREVIOUSLY UNREPORTED FEATURES OBSERVED.

[REDACTED]

TOP SECRET CHESS RUFF

MISSION 4031, 17-24 AUGUST 1966

TATISHCHEVO ICBM LAUNCH SITE 7 : UR 5147N 04534E

LAUNCH SITE IS IN A LATE STAGE OF CONSTRUCTION. SILO APRON IS BEING PAVED.

NO MISSILES, MISSILE-RELATED EQUIPMENT, NEW CONSTRUCTION, CHANGES IN FACILITIES, OR PREVIOUSLY UNREPORTED FEATURES OBSERVED.

TATISHCHEVO ICBM LAUNCH SITE 8 UR 5150N 04534E

LAUNCH SITE IS NOW COMPLETE.

NO MISSILES, MISSILE-RELATED EQUIPMENT, NEW CONSTRUCTION, CHANGES IN FACILITIES, OR PREVIOUSLY UNREPORTED FEATURES OBSERVED.

TATISHCHEVO ICBM LAUNCH SITE 9 UR 5149N 04529E

CONSTRUCTION STATUS IS UNDETERMINED.

NO MISSILES, MISSILE-RELATED EQUIPMENT, NEW CONSTRUCTION, CHANGES IN FACILITIES, OR PREVIOUSLY UNREPORTED FEATURES OBSERVED.

TATISHCHEVO ICBM LAUNCH SITE 10 UR 5153N 04536E

CONSTRUCTION STATUS IS UNDETERMINED.

NO MISSILES, MISSILE-RELATED EQUIPMENT, NEW CONSTRUCTION, CHANGES IN FACILITIES, OR PREVIOUSLY UNREPORTED FEATURES OBSERVED.

TATISHCHEVO ICBM LAUNCH SITE 11 UR 5152N 04531E

CONSTRUCTION STATUS IS UNDETERMINED.

TOP SECRET CHESS RUFF

MISSION 4031, 17-24 AUGUST 1966

NO MISSILES, MISSILE-RELATED EQUIPMENT, NEW CONSTRUCTION, CHANGES IN FACILITIES, OR PREVIOUSLY UNREPORTED FEATURES OBSERVED.

TATISHCHEVO ICBM LAUNCH SITE 12

UR 5136N 04530E

LAUNCH SITE IS NOW COMPLETE. CONSTRUCTION OF CONTROL FACILITY IS NEARLY COMPLETE.

NO MISSILES, MISSILE-RELATED EQUIPMENT, NEW CONSTRUCTION, CHANGES IN FACILITIES, OR PREVIOUSLY UNREPORTED FEATURES OBSERVED.

TATISHCHEVO ICBM LAUNCH SITE 13

UR 5134N 04523E

NO MISSILES, MISSILE-RELATED EQUIPMENT, NEW CONSTRUCTION, CHANGES IN FACILITIES, OR PREVIOUSLY UNREPORTED FEATURES OBSERVED.

TATISHCHEVO ICBM LAUNCH SITE 14

UR 5133N 04529E

NO MISSILES, MISSILE-RELATED EQUIPMENT, NEW CONSTRUCTION, CHANGES IN FACILITIES, OR PREVIOUSLY UNREPORTED FEATURES OBSERVED.

TATISHCHEVO ICBM LAUNCH SITE 15

UR 5132N 04535E

NO MISSILES, MISSILE-RELATED EQUIPMENT, NEW CONSTRUCTION, CHANGES IN FACILITIES, OR PREVIOUSLY UNREPORTED FEATURES OBSERVED.

TOP SECRET CHESS RUFF

MISSION 4031, 17-24 AUGUST 1966

TATISHCHEVO ICBM LAUNCH SITE 16

UR 5129N 04528E

NO MISSILES, MISSILE-RELATED EQUIPMENT, NEW CONSTRUCTION, CHANGES IN FACILITIES, OR PREVIOUSLY UNREPORTED FEATURES OBSERVED.

[Redacted]

TATISHCHEVO ICBM LAUNCH SITE 17

UR 5136N 04535E

LAUNCH SITE IS NOW COMPLETE.

NO MISSILES, MISSILE-RELATED EQUIPMENT, NEW CONSTRUCTION, CHANGES IN FACILITIES, OR PREVIOUSLY UNREPORTED FEATURES OBSERVED.

[Redacted]

TATISHCHEVO ICBM LAUNCH SITE 19

UR 5131N 04523E

LAUNCH SITE IS NOW COMPLETE.

NO MISSILES, MISSILE-RELATED EQUIPMENT, NEW CONSTRUCTION, CHANGES IN FACILITIES, OR PREVIOUSLY UNREPORTED FEATURES OBSERVED.

[Redacted]

TATISHCHEVO ICBM LAUNCH SITE 20

UR 5133N 04518E

LAUNCH SITE IS NOW IN A LATE STAGE OF CONSTRUCTION.

NO MISSILES, MISSILE-RELATED EQUIPMENT, NEW CONSTRUCTION, CHANGES IN FACILITIES, OR PREVIOUSLY UNREPORTED FEATURES OBSERVED.

[Redacted]

TATISHCHEVO ICBM LAUNCH SITE 21

UR 5138N 04524E

LAUNCH SITE IS NOW COMPLETE.

NO MISSILES, MISSILE-RELATED EQUIPMENT, NEW

[Redacted]

TOP SECRET CHESS RUFF

MISSION 4031, 17-24 AUGUST 1966

CONSTRUCTION, CHANGES IN FACILITIES, OR PREVIOUSLY UNREPORTED FEATURES OBSERVED.

TATISHCHEVO ICBM LAUNCH SITE 22

UR 5132N 04513E

LAUNCH SITE REMAINS IN A LATE STAGE OF CONSTRUCTION.

NO MISSILES, MISSILE-RELATED EQUIPMENT, NEW CONSTRUCTION, CHANGES IN FACILITIES, OR PREVIOUSLY UNREPORTED FEATURES OBSERVED.

TATISHCHEVO ICBM LAUNCH SITE 24

UR 5132N 04506E

LAUNCH SITE REMAINS IN A MID-STAGE OF CONSTRUCTION.

NO MISSILES, MISSILE-RELATED EQUIPMENT, NEW CONSTRUCTION, CHANGES IN FACILITIES, OR PREVIOUSLY UNREPORTED FEATURES OBSERVED.

TATISHCHEVO ICBM LAUNCH SITE 25

UR 5126N 04516E

LAUNCH SITE REMAINS IN A MID-STAGE OF CONSTRUCTION.

NO MISSILES, MISSILE-RELATED EQUIPMENT, NEW CONSTRUCTION, CHANGES IN FACILITIES, OR PREVIOUSLY UNREPORTED FEATURES OBSERVED.

TATISHCHEVO ICBM LAUNCH SITE 26

UR 5128N 04510E

LAUNCH SITE IS NOW IN A LATE STAGE OF CONSTRUCTION.

NO MISSILES, MISSILE-RELATED EQUIPMENT, NEW CONSTRUCTION, CHANGES IN FACILITIES, OR PREVIOUSLY UNREPORTED FEATURES OBSERVED.

TOP SECRET CHESS RUFF

MISSION 4031, 17-24 AUGUST 1966

TATISHCHEVO ICBM LAUNCH SITE 27

UR 5129N 04515E

LAUNCH SITE IS NOW IN A LATE STAGE OF CONSTRUCTION.

NO MISSILES, MISSILE-RELATED EQUIPMENT, NEW CONSTRUCTION, CHANGES IN FACILITIES, OR PREVIOUSLY UNREPORTED FEATURES OBSERVED.

TATISHCHEVO ICBM LAUNCH SITE 28

UR 5127N 04521E

LAUNCH SITE REMAINS IN A LATE STAGE OF CONSTRUCTION.

NO MISSILES, MISSILE-RELATED EQUIPMENT, NEW CONSTRUCTION, CHANGES IN FACILITIES, OR PREVIOUSLY UNREPORTED FEATURES OBSERVED.

TATISHCHEVO ICBM LAUNCH SITE 29

UR 5129N 04533E

NO MISSILES, MISSILE-RELATED EQUIPMENT, NEW CONSTRUCTION, CHANGES IN FACILITIES, OR PREVIOUSLY UNREPORTED FEATURES OBSERVED.

TATISHCHEVO ICBM LAUNCH SITE 30

UR 5140N 04529E

LAUNCH SITE IS NOW COMPLETE.

NO MISSILES, MISSILE-RELATED EQUIPMENT, NEW CONSTRUCTION, CHANGES IN FACILITIES, OR PREVIOUSLY UNREPORTED FEATURES OBSERVED.

TOP SECRET CHESS RUFF

MISSION 4031, 17-24 AUGUST 1966

TATISHCHEVO ICBM LAUNCH SITE 32

UR 5125N 04510E

LAUNCH SITE REMAINS IN A MID-STAGE OF CONSTRUCTION.

NO MISSILES, MISSILE-RELATED EQUIPMENT, NEW CONSTRUCTION, CHANGES IN FACILITIES, OR PREVIOUSLY UNREPORTED FEATURES OBSERVED.

TATISHCHEVO ICBM LAUNCH SITE 35

UR 5141N 04532E

LAUNCH SITE REMAINS IN A LATE STAGE OF CONSTRUCTION. CONSTRUCTION CONTINUES ON PROBABLE CONTROL FACILITY.

NO MISSILES, MISSILE-RELATED EQUIPMENT, NEW CONSTRUCTION, CHANGES IN FACILITIES, OR PREVIOUSLY UNREPORTED FEATURES OBSERVED.

TATISHCHEVO ICBM LAUNCH SITE 36

UR 5142N 04513E

LAUNCH SITE IS NOW IN A MID-STAGE OF CONSTRUCTION.

NO MISSILES, MISSILE-RELATED EQUIPMENT, NEW CONSTRUCTION, CHANGES IN FACILITIES, OR PREVIOUSLY UNREPORTED FEATURES OBSERVED.

TATISHCHEVO ICBM LAUNCH SITE 37

UR 5145N 04517E

LAUNCH SITE CAN NOW BE CONFIRMED AND IS IN A MID-STAGE OF CONSTRUCTION.

NO MISSILES, MISSILE-RELATED EQUIPMENT, NEW CONSTRUCTION, CHANGES IN FACILITIES, OR PREVIOUSLY UNREPORTED FEATURES OBSERVED.

25X1



TOP SECRET CHESS RUFF

MISSION 4031, 17-24 AUGUST 1966



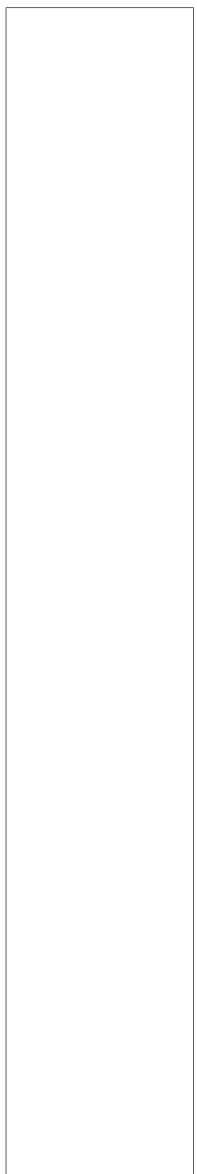
25X1

TATISHCHEVO ICBM LAUNCH SITE 38

UR 5140N 04502E

LAUNCH SITE CAN NOW BE CONFIRMED AND IS IN A MID-STAGE OF CONSTRUCTION.

NO MISSILES, MISSILE-RELATED EQUIPMENT, NEW CONSTRUCTION, CHANGES IN FACILITIES, OR PREVIOUSLY UNREPORTED FEATURES OBSERVED.



25X1

TATISHCHEVO ICBM LAUNCH SITE 39

UR 5146N 04506E

LAUNCH SITE REMAINS IN A MID-STAGE OF CONSTRUCTION.

NO MISSILES, MISSILE-RELATED EQUIPMENT, NEW CONSTRUCTION, CHANGES IN FACILITIES, OR PREVIOUSLY UNREPORTED FEATURES OBSERVED.



25X1

TATISHCHEVO ICBM LAUNCH SITE 41

UR 5143N 04508E

LAUNCH SITE CAN NOW BE CONFIRMED AND IS IN A MID-STAGE OF CONSTRUCTION.

NO MISSILES, MISSILE-RELATED EQUIPMENT, NEW CONSTRUCTION, CHANGES IN FACILITIES, OR PREVIOUSLY UNREPORTED FEATURES OBSERVED.



25X1

TATISHCHEVO ICBM LAUNCH SITE 42

UR 5145N 04511E

LAUNCH SITE REMAINS IN A MID-STAGE OF CONSTRUCTION.

NO MISSILES, MISSILE-RELATED EQUIPMENT, NEW CONSTRUCTION, CHANGES IN FACILITIES, OR PREVIOUSLY UNREPORTED FEATURES OBSERVED.



25X1



TOP SECRET CHESS RUFF

MISSION 4031, 17-24 AUGUST 1966

TATISHCHEVO ICBM LAUNCH SITE 44 **UR 5125N 04504E**

LAUNCH SITE REMAINS IN A MID-STAGE OF CONSTRUCTION.

NO MISSILES, MISSILE-RELATED EQUIPMENT, NEW CONSTRUCTION, CHANGES IN FACILITIES, OR PREVIOUSLY UNREPORTED FEATURES OBSERVED.

TATISHCHEVO ICBM LAUNCH SITE 47 **UR 5155N 04543E**

LAUNCH SITE REMAINS IN A MID-STAGE OF CONSTRUCTION.

NO MISSILES, MISSILE-RELATED EQUIPMENT, NEW CONSTRUCTION, CHANGES IN FACILITIES, OR PREVIOUSLY UNREPORTED FEATURES OBSERVED.

TATISHCHEVO ICBM LAUNCH SITE 51 **UR 5149N 04511E**

LAUNCH SITE IS NOW IN A MID-STAGE OF CONSTRUCTION.

NO MISSILES, MISSILE-RELATED EQUIPMENT, NEW CONSTRUCTION, CHANGES IN FACILITIES, OR PREVIOUSLY UNREPORTED FEATURES OBSERVED.

TATISHCHEVO ICBM LAUNCH SITE 54 **UR 5139N 04509E**

LAUNCH SITE CAN NOW BE CONFIRMED AND IS IN A MID-STAGE OF CONSTRUCTION.

NO MISSILES, MISSILE-RELATED EQUIPMENT, NEW CONSTRUCTION, CHANGES IN FACILITIES, OR PREVIOUSLY UNREPORTED FEATURES OBSERVED.

TATISHCHEVO ICBM LAUNCH SITE 57 **UR 5128N 04504E**

LAUNCH SITE IS STILL IN A LATE STAGE OF CONSTRUCTION.

TOP SECRET CHESS RUFF

MISSION 4031, 17-24 AUGUST 1966

NO MISSILES, MISSILE-RELATED EQUIPMENT, NEW CONSTRUCTION, CHANGES IN FACILITIES, OR PREVIOUSLY UNREPORTED FEATURES OBSERVED.

TATISHCHEVO ICBM LAUNCH SITE 58

UR 5152N 04521E

LAUNCH SITE IS NOW IN A MID-STAGE OF CONSTRUCTION AND CAN BE CONFIRMED AS A CONTROL SITE.

NO MISSILES, MISSILE-RELATED EQUIPMENT, NEW CONSTRUCTION, CHANGES IN FACILITIES, OR PREVIOUSLY UNREPORTED FEATURES OBSERVED.

TATISHCHEVO ICBM LAUNCH SITE 59

UR 5145N 04521E

LAUNCH SITE IS NOW IN A MID-STAGE OF CONSTRUCTION.

NO MISSILES, MISSILE-RELATED EQUIPMENT, NEW CONSTRUCTION, CHANGES IN FACILITIES, OR PREVIOUSLY UNREPORTED FEATURES OBSERVED.

TATISHCHEVO ICBM LAUNCH SITE 61

UR 5152N 04514E

LAUNCH SITE IS NOW IN A MID-STAGE OF CONSTRUCTION.

NO MISSILES, MISSILE-RELATED EQUIPMENT, NEW CONSTRUCTION, CHANGES IN FACILITIES, OR PREVIOUSLY UNREPORTED FEATURES OBSERVED.

TATISHCHEVO ICBM LAUNCH SITE 62

UR 5156N 04518E

LAUNCH SITE IS NOW IN A MID-STAGE OF CONSTRUCTION.

NO MISSILES, MISSILE-RELATED EQUIPMENT, NEW CONSTRUCTION, CHANGES IN FACILITIES, OR PREVIOUSLY UNREPORTED FEATURES OBSERVED.

TOP SECRET CHESS RUFF

MISSION 4031, 17-24 AUGUST 1966

TATISHCHEVO ICBM PROB LAUNCH SITE 63 UR 5156N 04523E

CONSTRUCTION STATUS IS UNDETERMINED.

NO MISSILES, MISSILE-RELATED EQUIPMENT, NEW CONSTRUCTION, CHANGES IN FACILITIES, OR PREVIOUSLY UNREPORTED FEATURES OBSERVED.

TATISHCHEVO ICBM PROB LAUNCH SITE 65 UR 5149N 04518E

CONSTRUCTION STATUS IS UNDETERMINED.

NO MISSILES, MISSILE-RELATED EQUIPMENT, NEW CONSTRUCTION, CHANGES IN FACILITIES, OR PREVIOUSLY UNREPORTED FEATURES OBSERVED.

TATISHCHEVO ICBM LAUNCH SITE 66 UR 5151N 04525E

LAUNCH SITE CAN NOW BE CONFIRMED AND IT IS IN A MID-STAGE OF CONSTRUCTION.

NO MISSILES, MISSILE-RELATED EQUIPMENT, NEW CONSTRUCTION, CHANGES IN FACILITIES, OR PREVIOUSLY UNREPORTED FEATURES OBSERVED.

TATISHCHEVO ICBM LAUNCH SITE 67 UR 5202N 04527E

LAUNCH SITE REMAINS IN A MID-STAGE OF CONSTRUCTION AND IS NOW CONFIRMED AS A CONTROL SITE.

NO MISSILES, MISSILE-RELATED EQUIPMENT, NEW CONSTRUCTION, CHANGES IN FACILITIES, OR PREVIOUSLY UNREPORTED FEATURES OBSERVED.

25X1

25X1

25X1

25X1

25X1

25X1

25X1

25X1

TOP SECRET CHESS RUFF

MISSION 4031, 17-24 AUGUST 1966

TATISHCHEVO ICBM PROB LAUNCH SITE 69 **UR 5208N 04524E**

CONSTRUCTION STATUS IS UNDETERMINED.

NO MISSILES, MISSILE-RELATED EQUIPMENT, NEW CONSTRUCTION, CHANGES IN FACILITIES, OR PREVIOUSLY UNREPORTED FEATURES OBSERVED.

[Redacted]

TATISHCHEVO ICBM PROB LAUNCH SITE 70 **UR 5208N 04529E**

CONSTRUCTION STATUS IS UNDETERMINED.

NO MISSILES, MISSILE-RELATED EQUIPMENT, NEW CONSTRUCTION, CHANGES IN FACILITIES, OR PREVIOUSLY UNREPORTED FEATURES OBSERVED.

[Redacted]

TATISHCHEVO ICBM LAUNCH SITE 71 **UR 5204N 04531E**

LAUNCH SITE CAN NOW BE CONFIRMED AND IS IN A MID-STAGE OF CONSTRUCTION.

NO MISSILES, MISSILE-RELATED EQUIPMENT, NEW CONSTRUCTION, CHANGES IN FACILITIES, OR PREVIOUSLY UNREPORTED FEATURES OBSERVED.

[Redacted]

TATISHCHEVO ICBM LAUNCH SITE 72 **UR 5139N 04514E**

LAUNCH SITE CAN NOW BE CONFIRMED AND IS IN A MID-STAGE OF CONSTRUCTION.

NO MISSILES, MISSILE-RELATED EQUIPMENT, NEW CONSTRUCTION, CHANGES IN FACILITIES, OR PREVIOUSLY UNREPORTED FEATURES OBSERVED.

[Redacted]

TOP SECRET CHESS RUFF

MISSION 4031, 17-24 AUGUST 1966

TATISHCHEVO ICBM LAUNCH SITE 73

UR 5140N 04519E

IDENTIFICATION ONLY.

TATISHCHEVO ICBM LAUNCH SITE 74

UR 5208N 04517E

LAUNCH SITE CAN NOW BE CONFIRMED AND IS IN A MID-STAGE OF CONSTRUCTION.

NO MISSILES, MISSILE-RELATED EQUIPMENT, NEW CONSTRUCTION, CHANGES IN FACILITIES, OR PREVIOUSLY UNREPORTED FEATURES OBSERVED.

TATISHCHEVO ICBM LAUNCH SITE 75

UR 5159N 04530E

LAUNCH SITE IS NOW IN A MID-STAGE OF CONSTRUCTION.

NO MISSILES, MISSILE-RELATED EQUIPMENT, NEW CONSTRUCTION, CHANGES IN FACILITIES, OR PREVIOUSLY UNREPORTED FEATURES OBSERVED.

TATISHCHEVO ICBM LAUNCH SITE 80

UR 5201N 04545E

LAUNCH SITE REMAINS IN A MID-STAGE OF CONSTRUCTION.

NO MISSILES, MISSILE-RELATED EQUIPMENT, NEW CONSTRUCTION, CHANGES IN FACILITIES, OR PREVIOUSLY UNREPORTED FEATURES OBSERVED.

TATISHCHEVO ICBM LAUNCH SITE 81

UR 5209N 04538E

LAUNCH SITE IS NOW IN A MID-STAGE OF CONSTRUCTION AND CAN BE CONFIRMED AS A CONTROL SITE.

NO MISSILES, MISSILE-RELATED EQUIPMENT, NEW CONSTRUCTION, CHANGES IN FACILITIES, OR PREVIOUSLY UNREPORTED FEATURES OBSERVED.

TOP SECRET CHESS RUFF

MISSION 4031, 17-24 AUGUST 1966

UNREPORTED FEATURES OBSERVED.

[Redacted]

TATISHCHEVO ICBM LAUNCH SITE 83

UR 5212N 04528E

LAUNCH SITE IS NOW IN A MID-STAGE OF CONSTRUCTION.

NO MISSILES, MISSILE-RELATED EQUIPMENT, NEW CONSTRUCTION, CHANGES IN FACILITIES, OR PREVIOUSLY UNREPORTED FEATURES OBSERVED.

[Redacted]

TATISHCHEVO ICBM LAUNCH SITE 84

UR 5215N 04531E

LAUNCH SITE IS NOW IN A MID-STAGE OF CONSTRUCTION.

NO MISSILES, MISSILE-RELATED EQUIPMENT, NEW CONSTRUCTION, CHANGES IN FACILITIES, OR PREVIOUSLY UNREPORTED FEATURES OBSERVED.

[Redacted]

TATISHCHEVO ICBM LAUNCH SITE 85

UR 5213N 04516E

LAUNCH SITE CAN NOW BE CONFIRMED AND IS IN A MID-STAGE OF CONSTRUCTION.

NO MISSILES, MISSILE-RELATED EQUIPMENT, NEW CONSTRUCTION, CHANGES IN FACILITIES, OR PREVIOUSLY UNREPORTED FEATURES OBSERVED.

[Redacted]

TATISHCHEVO ICBM LAUNCH SITE 86

UR 5211N 04521E

LAUNCH SITE CAN NOW BE CONFIRMED AND IS IN A MID-STAGE OF CONSTRUCTION.

NO MISSILES, MISSILE-RELATED EQUIPMENT, NEW CONSTRUCTION, CHANGES IN FACILITIES, OR PREVIOUSLY

25X1

25X1

25X1

25X1

25X1

25X1

[Redacted]

TOP SECRET CHESS RUFF

MISSION 4031, 17-24 AUGUST 1966

UNREPORTED FEATURES OBSERVED.

[Redacted]

TATISHCHEVO ICBM LAUNCH SITE 88

UR 5158N 04518E

LAUNCH SITE CAN NOW BE CONFIRMED AND IS IN A MID-STAGE OF CONSTRUCTION.

NO MISSILES, MISSILE-RELATED EQUIPMENT, NEW CONSTRUCTION, CHANGES IN FACILITIES, OR PREVIOUSLY UNREPORTED FEATURES OBSERVED.

[Redacted]

TATISHCHEVO ICBM LAUNCH SITE 89

UR 5148N 04524E

LAUNCH SITE CAN NOW BE CONFIRMED AND IS IN A MID-STAGE OF CONSTRUCTION.

NO MISSILES, MISSILE-RELATED EQUIPMENT, NEW CONSTRUCTION, CHANGES IN FACILITIES, OR PREVIOUSLY UNREPORTED FEATURES OBSERVED.

[Redacted]

TATISHCHEVO ICBM LAUNCH SITE 90

UR 5145N 04527E

LAUNCH SITE REMAINS IN A MID-STAGE OF CONSTRUCTION.

NO MISSILES, MISSILE-RELATED EQUIPMENT, NEW CONSTRUCTION, CHANGES IN FACILITIES, OR PREVIOUSLY UNREPORTED FEATURES OBSERVED.

[Redacted]

TATISHCHEVO ICBM LAUNCH SITE 91

UR 5214N 04523E

LAUNCH SITE IS NOW IN A MID-STAGE OF CONSTRUCTION AND CAN BE CONFIRMED AS A CONTROL SITE.

NO MISSILES, MISSILE-RELATED EQUIPMENT, NEW CONSTRUCTION, CHANGES IN FACILITIES, OR PREVIOUSLY UNREPORTED FEATURES OBSERVED.

[Redacted]

TOP SECRET CHESS RUFF

MISSION 4031, 17-24 AUGUST 1966

UNREPORTED FEATURES OBSERVED.

[Redacted]

TATISHCHEVO ICBM LAUNCH SITE 92 : UR 5206N 04526E

LAUNCH SITE CAN NOW BE CONFIRMED AND IS IN A MID-STAGE OF CONSTRUCTION.

NO MISSILES, MISSILE-RELATED EQUIPMENT, NEW CONSTRUCTION, CHANGES IN FACILITIES, OR PREVIOUSLY UNREPORTED FEATURES OBSERVED.

[Redacted]

TATISHCHEVO ICBM LAUNCH SITE 93 UR 5211N 04513E

LAUNCH SITE CAN NOW BE CONFIRMED AND IS IN A MID-STAGE OF CONSTRUCTION.

NO MISSILES, MISSILE-RELATED EQUIPMENT, NEW CONSTRUCTION, CHANGES IN FACILITIES, OR PREVIOUSLY UNREPORTED FEATURES OBSERVED.

[Redacted]

TATISHCHEVO ICBM LAUNCH SITE 98 UR 5157N 04536E

LAUNCH SITE REMAINS IN A MID-STAGE OF CONSTRUCTION.

NO MISSILES, MISSILE-RELATED EQUIPMENT, NEW CONSTRUCTION, CHANGES IN FACILITIES, OR PREVIOUSLY UNREPORTED FEATURES OBSERVED.

[Redacted]

TATISHCHEVO ICBM LAUNCH SITE 99 UR 5208N 04544E

LAUNCH SITE CAN NOW BE CONFIRMED AND REMAINS IN AN EARLY STAGE OF CONSTRUCTION.

NO MISSILES, MISSILE-RELATED EQUIPMENT, NEW CONSTRUCTION, CHANGES IN FACILITIES, OR PREVIOUSLY UNREPORTED FEATURES OBSERVED.

[Redacted]

TOP SECRET CHESS RUFF

MISSION 4031, 17-24 AUGUST 1966



TATISHCHEVO ICBM LAUNCH SITE 100 UR 5158N 04544E

LAUNCH SITE CAN NOW BE CONFIRMED AND REMAINS IN AN EARLY STAGE OF CONSTRUCTION.

NO MISSILES, MISSILE-RELATED EQUIPMENT, NEW CONSTRUCTION, CHANGES IN FACILITIES, OR PREVIOUSLY UNREPORTED FEATURES OBSERVED.



TATISHCHEVO ICBM COMPLEX SUPPORT FACILITY UR 5140N 04534E

COMPLEX SUPPORT FACILITY INCLUDES THE ADMINISTRATIVE AND HOUSING AREA AND THE COMMUNICATION FACILITY ON THE EAST EDGE OF TATISHCHEVO IN ADDITION TO THE RAILHEAD AND STORAGE AREA NEAR THE RAIL-TO-ROAD TRANSFER POINT. CONSTRUCTION ACTIVITY CONTINUES IN ALL SECTIONS. NO MISSILES OR MISSILE-RELATED EQUIPMENT OBSERVED.



TATISHCHEVO ICBM RAIL-TO-ROAD TRANSFER PT UR 5141N 04532E

NO MISSILES, MISSILE-RELATED EQUIPMENT, NEW CONSTRUCTION, CHANGES IN FACILITIES, OR PREVIOUSLY UNREPORTED FEATURES OBSERVED.



KARMELAVA MRBM LAUNCH SITE UR 5457N 02406E

ALL 4 POSITIONS APPEAR OCCUPIED. APPROXIMATELY 15 UNIDENTIFIED VEHICLES/PIECES OF EQUIPMENT OBSERVED. ONLY PART OF SITE SUPPORT FACILITY IS COVERED BY PHOTOGRAPHY.

NO NEW CONSTRUCTION, CHANGES IN FACILITIES, OR PREVIOUSLY UNREPORTED FEATURES OBSERVED.



25X1

TOP SECRET CHESS RUFF

MISSION 4031, 17-24 AUGUST 1966

[Redacted]

[Redacted]

[Redacted]

VIESVILE MRBM LAUNCH SITE

UR 5501N 02223E

[Redacted]

NONE OF THE 4 LAUNCH PADS ARE OCCUPIED. NUMEROUS SMALL VEHICLES/PIECES OF EQUIPMENT ARE OBSERVED AT THE SITE.

NO NEW CONSTRUCTION, CHANGES IN FACILITIES, OR PREVIOUSLY UNREPORTED FEATURES OBSERVED.

[Redacted]

[Redacted]

KURDZHIPS KAYA MRBM LAUNCH SITE

UR 4431N 04000E

[Redacted]

AN EXERCISE APPEARS TO BE IN PROGRESS ON EACH PAD ALTHOUGH NO MISSILES ARE VISIBLE. THE 4 PADS CONTAIN A TOTAL OF 4 PROBABLE ERECTORS, 7 POSSIBLE OXIDIZERS, 2 FUEL TRAILERS, AND 9 UNIDENTIFIED VEHICLES/PIECES OF EQUIPMENT. APPROXIMATELY 25 OTHER UNIDENTIFIED VEHICLES/PIECES OF EQUIPMENT ARE SCATTERED THROUGHOUT THE SITE.

NO NEW CONSTRUCTION, CHANGES IN FACILITIES, OR PREVIOUSLY UNREPORTED FEATURES OBSERVED.

[Redacted]

[Redacted]

TAURAGE MRBM LAUNCH SITE 1

UR 5510N 02220E

[Redacted]

2 LAUNCH POSITIONS APPEAR OCCUPIED. THE OTHER 2 POSITIONS AND MOST OF THE SITE SUPPORT FACILITY ARE CLOUD COVERED. AT LEAST 5 UNIDENTIFIED VEHICLES/PIECES OF EQUIPMENT OBSERVED.

NO MISSILES, MISSILE-RELATED EQUIPMENT, NEW CONSTRUCTION, CHANGES IN FACILITIES, OR PREVIOUSLY UNREPORTED FEATURES OBSERVED.

[Redacted]

[Redacted]

TOP SECRET CHESS RUFF

MISSION 4031, 17-24 AUGUST 1966

OBSERVED.

[REDACTED] - THE SOUTHEASTERN PAD CONTAINS AN ERECTOR. A POSSIBLE MISSILE ON A TRANSPORTER IS OBSERVED EXTENDING FROM A READY BUILDING. APPROXIMATELY 15 SMALL VEHICLES ARE OBSERVED WITHIN THE SITE. SEVERAL SUPPORT BUILDINGS WITHIN THE SITE ARE PAINTED IN AN APPARENT ATTEMPT AT CAMOUFLAGE. APPROXIMATELY 0.5 NM SOUTH IS AN AREA CONTAINING A SITE SUPPORT FACILITY, [REDACTED]

[REDACTED] FACILITY. SEVERAL BUILDINGS IN THIS AREA ALSO APPEAR TO BE CAMOUFLAGED. [REDACTED] FACILITY APPEARS UNCHANGED. AT THE COMMUNICATION FACILITY 5 HORIZONTAL DIPOLES, 2 VEE ANTENNAS, A HARDENED CONTROL BUNKER, AND A HARD SUBSURFACE COMMUNICATIONS ANTENNA ARE OBSERVED.

[REDACTED]

TAURAGE MRBM LAUNCH SITE 3

UR 5505N 02219E

[REDACTED]

[REDACTED] THE LAUNCH PADS ARE NOT OCCUPIED. VERY LITTLE ACTIVITY IS OBSERVED.

NO MISSILES, MISSILE-RELATED EQUIPMENT, NEW CONSTRUCTION, CHANGES IN FACILITIES, OR PREVIOUSLY UNREPORTED FEATURES OBSERVED.

[REDACTED]

[REDACTED]

TAURAGE FIXED FIELD MRBM SITE

UR 5510N 02214E

THE SITE IS NOW ASSESSED AS CONTAINING 4 LAUNCH POSITIONS. LAUNCH RING POSITIONS ARE IDENTIFIABLE AT EACH LAUNCH CLEARING.

NO MISSILES, MISSILE-RELATED EQUIPMENT, NEW CONSTRUCTION, CHANGES IN FACILITIES, OR PREVIOUSLY UNREPORTED FEATURES OBSERVED.

[REDACTED]

25X1

TOP SECRET CHESS RUFF

MISSION 4031, 17-24 AUGUST 1966

KAPUSTIN YAR/VLADIMIROVKA MSL TEST CTR UR 4835N 04545E

NO NEW MISSILE LAUNCH FACILITIES OBSERVED IN CENTER 10 X 40-NM PORTION OF THE 50-NM SEARCH AREA.

KAPUSTIN YAR LAUNCH COMPLEX A UR 4842N 04615E

[] -- AT LEAST 50 VEHICLES/PIECES OF EQUIPMENT ARE OBSERVED IN AND AROUND THE HOUSING AND SUPPORT AREA AND THE WARHEAD AREAS. NO MISSILES ARE OBSERVED.

[] -- AT LEAST 25 VEHICLES/PIECES OF EQUIPMENT ARE OBSERVED IN THE HOUSING AREA.

NO MISSILES, MISSILE-RELATED EQUIPMENT, NEW CONSTRUCTION, CHANGES IN FACILITIES, OR PREVIOUSLY UNREPORTED FEATURES OBSERVED.

KAPUSTIN YAR LAUNCH COMPLEX B UR 4841N 04616E

[] -- AN UNIDENTIFIED MISSILE UNIT IS ENGAGED IN TRAINING WEST OF LAUNCH COMPLEX B. IT CONSISTS OF AT LEAST 50 VEHICLES/PIECES OF EQUIPMENT, 1 PROBABLE MISSILE CHECKOUT TENT, 14 PERSONNEL TENTS, AND 1 PROBABLE MESS TENT. INCLUDED AMONG THE VEHICLES ARE FIVE [] POSSIBLE MISSILE TRANSPORTERS/LAUNCHERS WITH PRIME MOVERS, ONE [] POSSIBLE MISSILE TRANSPORTER/LAUNCHER WITHOUT PRIME MOVER, TWO [] PROBABLE MISSILE TRANSPORTERS WITH PRIME MOVERS, ONE [] POSSIBLE MISSILE TRANSPORTER WITHOUT PRIME MOVER, ONE [] PROBABLE MISSILE TRANSPORTER (TRAILER COVERING REMOVED) WITH PRIME MOVER UNCOUPLED FROM TRAILER, 2 POSSIBLE MISSILE CHECKOUT VANS CONNECTED TO PROBABLE MISSILE CHECKOUT TENT WITH CABLES, AND APPROXIMATELY 40 ADDITIONAL SUPPORT VEHICLES/PIECES OF EQUIPMENT. NO NEW CONSTRUCTION, CHANGES IN FACILITIES, OR PREVIOUSLY UNREPORTED

TOP SECRET CHESS RUFF

MISSION 4031, 17-24 AUGUST 1966

FEATURES OBSERVED.

[REDACTED] - APPROXIMATELY 45 VEHICLES/PIECES OF EQUIPMENT ALIGNED IN 2 ROWS, 13 PERSONNEL TENTS, 1 PROBABLE MESS TENT, AND 1 PROBABLE MISSILE CHECKOUT TENT ARE OBSERVED IN THE BIVOUAC AND TRAINING AREA. AT LEAST 5 VEHICLES/PIECES OF EQUIPMENT ARE OBSERVED IN THE LAUNCH AND SUPPORT AREAS OF COMPLEX B.

(SEE ATTACHMENT)

[REDACTED]

KAPUSTIN YAR LAUNCH COMPLEX C

UR 4836N 04616E

THE COMPLEX IS ACTIVE WITH EQUIPMENT IN MANY OF THE AREAS. EQUIPMENT REMAINS ESSENTIALLY THE SAME ON BOTH PASSES UNLESS OTHERWISE SPECIFIED.

LAUNCH AREA 1C -- [REDACTED] -- A MISSILE EXERCISE, WITH AN ERECTED PROBABLE SS-4, IS UNDERWAY ON PAD 1C-1. THE NORMAL FUEL, OXIDIZER, AND SUPPORT VEHICLES ARE POSITIONED ON OR NEAR THE PAD. THE CYLINDRICAL OBJECT HAS BEEN REMOVED FROM ATOP THE POSSIBLE ERECTOR STRUCTURE AT 1C-3 WHICH IS PULLED BACK ON THE RAIL LINE FROM THE LAUNCH POINT. NO NEW CONSTRUCTION, CHANGES IN FACILITIES, OR PREVIOUSLY UNREPORTED FEATURES OBSERVED AT LAUNCH PAD 1C-2. A POSSIBLE ERECTOR IS PARKED IN THE 1C FINAL CHECKOUT AREA.

[REDACTED] - A MISSILE EXERCISE IS IN AN EARLY STAGE AT 1C-1. A PROBABLE SS-4 IS ON A TRANSPORTER NEAR THE ERECTOR, SOME SUPPORT VEHICLES ARE ON THE PAD, AND THE FUEL AND OXIDIZER VEHICLES ARE APPROACHING THE PAD ON THE ROAD FROM 1C-3. NO CHANGE IS NOTED IN 1C-2 OR 1C-3 SINCE

[REDACTED]

LAUNCH AREA 2C -- A TOWER/CRANE AND AT LEAST 3 VEHICLES/PIECES OF EQUIPMENT REMAIN ON PAD 2C-1. NO NEW CONSTRUCTION, CHANGES IN FACILITIES, OR PREVIOUSLY UNREPORTED FEATURES OBSERVED.

LAUNCH AREA 3C -- NO MISSILES, MISSILE-RELATED EQUIPMENT, NEW CONSTRUCTION, CHANGES IN FACILITIES, OR PREVIOUSLY UNREPORTED FEATURES OBSERVED.

LAUNCH AREA 4C -- CONSTRUCTION IS CONTINUING AT THE NW

TOP SECRET CHESS RUFF

MISSION 4031, 17-24 AUGUST 1966

SILO AT SITE 4C-1 IN AN APPARENT DUPLICATION OF THE MODIFICATIONS AT THE NORTHEAST SILO. EXTENSIONS OF THE SILO COVER RAILS AS WELL AS CROSSOVER RAILS HAVE BEEN EMPLACED AND AN OPEN FRAMEWORK STRUCTURE IS UNDER CONSTRUCTION ON THE RAIL EXTENSIONS. LENGTH AND WIDTH DIMENSIONS OF THIS STRUCTURE APPEAR THE SAME AS THE 35-FT HIGH STRUCTURE OVER THE NE SILO. A NEW ROW OF POLES OR MASTS PARALLEL THE RAIL EXTENSIONS AT BOTH THE NE AND NW SILOS. SOME OF THE [] DIAMETER RINGS ARE STILL OBSERVED AT THE NW SILO. THE RAIL-SERVED SW SILO IS OPEN ON BOTH PASSES. AN UNIDENTIFIED RAIL CAR/PIECE OF EQUIPMENT REMAINS ON THE SIDING APPROACHING THIS SILO. THE SE SILO COVER IS PARTIALLY OPEN ON BOTH PASSES. SCARRING AND ACTIVITY ON THE SILO APRON MAY INDICATE THAT THIS SILO IS ALSO UNDERGOING MODIFICATION.

25X1

LAUNCH SITE 4C-2 -- ALL SILO COVERS ARE CLOSED AND A PROBABLE SS-5 TRAINING MISSILE, 2 ERECTORS/LOADERS, AND SEVERAL SUPPORT VEHICLES ARE PARKED IN THE AREA.

LAUNCH AREA 5C -- THE PROBABLE SS-5 TRAINING MISSILE AND AN ERECTOR ARE ON THE SOUTHERN PAD AT 5C-1. TWO POSSIBLE SS-5 OXIDIZER TRAILERS ARE ON THE LOOP ROAD AND 3 PROBABLE SS-5 FUEL TRANSPORTERS AND AN UNIDENTIFIED SEMI-TRAILER ARE ON THE PARKING APRON AT THE EAST SIDE OF THE SITE.

PROBABLE LAUNCH AREA 6C -- CONSTRUCTION IS CONTINUING WITH ADDITIONAL ROAD GRADING, A RECTANGULAR BUILDING UNDER CONSTRUCTION, AND AN OPEN TRENCH FROM THE VICINITY OF THE 5C HEAT PLANT TO THE NEW AREA. THE PROBABLE MISSILE ASSEMBLY AND CHECKOUT AREA HAS THE LARGEST AMOUNT OF ACTIVITY WITH 6 STRINGS OF RAIL CARS, 3 OF WHICH HAVE AT LEAST 40 VEHICLES/PIECES OF PROBABLE MISSILE SUPPORT EQUIPMENT. THE OTHER 3 GROUPS HAVE LONG CLOSED RAIL CARS. IN ADDITION THERE ARE 5 OTHER RAIL CARS AND IN THE NEWER PORTION OF THE AREA, THE SW SECTION, THERE ARE 45 VEHICLES/PIECES OF EQUIPMENT AND 3 POSSIBLE EMPTY MISSILE TRANSPORTERS. A NEW FACILITY IS UNDER CONSTRUCTION IN THE NE PORTION OF THE LAUNCH COMPLEX C FINAL ASSEMBLY AND CHECKOUT AREA. AT LEAST 19 RAIL CARS WITH AT LEAST 7 LARGE CONTAINERS ARE IN THIS AREA. VEHICLES/PIECES OF EQUIPMENT ARE ALSO PARKED IN MOTOR POOLS IN THE FOLLOWING PORTIONS OF LAUNCH COMPLEX C -- WARHEAD HANDLING AND CHECKOUT AREA WEST, ADMINISTRATION HOUSING AND SERVICE AREAS NORTH AND SOUTH, AND SSM BIVOUAC AREA.

(SEE ATTACHMENT)

25X1

TOP SECRET CHESS RUFF

TOP SECRET CHESS RUFF

MISSION 4031, 17-24 AUGUST 1966

KAPUSTIN YAR LAUNCH COMPLEX D

UR 4828N 04618E

AT LEAST 15 VEHICLES/PIECES OF EQUIPMENT ARE LOCATED IN LAUNCH AREA 2D. NO MISSILES/AERODYNAMIC VEHICLES OBSERVED.

NO NEW CONSTRUCTION, CHANGES IN FACILITIES, OR PREVIOUSLY UNREPORTED FEATURES OBSERVED.

KAPUSTIN YAR LAUNCH COMPLEX E

UR 4846N 04618E

-- 2 POSSIBLE WHEELED SCUD TEL ARE IN THE TRAINING AND BIVOUAC AREA.

- A PROBABLE SCUD BATTALION WITH 3 POSSIBLE WHEELED SCUD TEL IS IN THE TRAINING AND BIVOUAC AREA NORTH OF THE TROOP TRAINING AREA. NUMEROUS VEHICLES ARE OBSERVED IN THE TROOP TRAINING AREA MOTOR POOL.

NO MISSILES, MISSILE-RELATED EQUIPMENT, NEW CONSTRUCTION, CHANGES IN FACILITIES, OR PREVIOUSLY UNREPORTED FEATURES OBSERVED.

KAPUSTIN YAR LAUNCH COMPLEX G

UR 4822N 04617E

-- APPROXIMATELY 17 VEHICLES/PIECES OF EQUIPMENT ARE ADJACENT TO THE HOUSING AND SUPPORT AREA. THE NORTH TRACKING SITE IS ACTIVE WITH 1 INSTRUMENTATION MOUND OCCUPIED. THE SOUTH TRACKING SITE IS INACTIVE. NO MISSILES OBSERVED.

- 3 VEHICLES/PIECES OF EQUIPMENT ARE ADJACENT TO THE HOUSING AND SUPPORT AREA.

NO NEW CONSTRUCTION, CHANGES IN FACILITIES, OR PREVIOUSLY UNREPORTED FEATURES OBSERVED.

25X1

TOP SECRET CHESS RUFF

MISSION 4031, 17-24 AUGUST 1966

KAPUSTIN YAR LAUNCH COMPLEX H

UR 4848N 04620E

A VEHICLE/PIECE OF EQUIPMENT IS PARKED ON THE SOUTH PAD IN THE LAUNCH AREA AND A VEHICLE/PIECE OF EQUIPMENT IS PARKED IN THE SUPPORT AREA. NO MISSILES OBSERVED.

NO NEW CONSTRUCTION, CHANGES IN FACILITIES, OR PREVIOUSLY UNREPORTED FEATURES OBSERVED.

KAPUSTIN YAR MISSILE STOR & HANDLING AREA UR 4822N 04612E

EQUIPMENT OBSERVED WITHIN THE AREA ON [REDACTED] 1 ASM-4 (KITCHEN), 27 POSSIBLE ASM-4 SHIPPING CRATES, 8 POSSIBLE ASM-4/ASM-1 SHIPPING CRATES, AND 7 PROBABLE ASM-1 SHIPPING CRATES.

ON [REDACTED] A TRAIN IS AT THE OFF-LOADING AREA AT THE ROAD INTERSECTION TO THIS AREA AND EQUIPMENT IS BEING LOADED OR UNLOADED. AT LEAST 8 TRUCKS/VANS AND 2 VEHICLES/PIECES OF EQUIPMENT ARE ON THE TRAIN. FIVE PROBABLE ASM-4 SHIPPING CRATES, 16 TRUCKS (5 WITH TRAILERS), 7 PROBABLE HANDLING DOLLIES (2 WITH PRIME MOVERS), AND A TRUCK-MOUNTED CRANE ARE PARKED NEARBY. THE PROBABLE HANDLING DOLLIES AND SOME OF THE TRUCKS WERE PRESENT ON PASS [REDACTED]

IDENTIFICATION OF THE ASM-4 ON THIS MISSION, MISSION [REDACTED] (NPIC CABLE 59606, CITE 8269) AS WELL AS THE SHIPPING CRATES, CONFIRMS THAT THIS AREA IS IN DIRECT SUPPORT OF AERODYNAMIC ACTIVITIES AT AKHTUBINSK/VLADIMIROVKA AIRFIELD.

A NEW FACILITY IS UNDER CONSTRUCTION OUTSIDE THE SE FENCE LINE OF THE AREA. THIS NEW FACILITY IS DOUBLE FENCED WITH 2 GUARD TOWERS AT THE OUTER CORNERS AND CONTAINS 4 LATTICE TOWERS AND AN APPARENT LOOP ROAD PATTERN. SCARRING WAS FIRST OBSERVED IN THIS AREA ON [REDACTED]

(SEE ATTACHMENT)

25X1

TOP SECRET CHESS RUFF

MISSION 4031, 17-24 AUGUST 1966

SARY-SHAGAN ANTIMISSILE TEST CENTER

UR 4602N 07334E

ONLY LAUNCH COMPLEXES A AND B, PROBABLE LONG RANGE SAM LAUNCH COMPLEX 2, AND INSTRUMENTATION SITES 3, 11, 12, AND 14 ARE COVERED. NO NEW MISSILE FACILITIES OBSERVED.

PETROPAVLOVSK NAVAL BASE TARYA BAY

UR 5255N 15834E

OB -- [] -- AT PIERS AND QUAYS -- 1 E-I-CLASS SSGN, 1 G-CLASS SSB (WITH MISSILE HATCHES OPEN), 1 J-CLASS SSG, 2 F-CLASS SS, 1 Z-CLASS SS, 1 W-CLASS SS, 2 L-III-CLASS OSS, 1 SKORYY-CLASS DD, 2 OSA-CLASS PTFG, 2 T-43-CLASS MSF, 1 DON-CLASS AS, 1 OSKOL-CLASS ASL, 3 PROBABLE YPT, 1 BOLVA-CLASS APL, 1 ZEVA-CLASS YRSN, 1 AO, 5 SMALL SERVICE CRAFT, AND 1 UNIDENTIFIED HULL (STRIPPED). IN GUBA AVACHINSKAYA -- 1 G-CLASS SSB, 1 F-CLASS SS, 1 KOTLIN-CLASS DD, 1 SKORYY-CLASS DD, 2 RIGA-CLASS DE, 5 OSA-CLASS PTFG, 4 P-6-CLASS PT, 1 YPT, 4 AO, 1 AT, AND 4 SERVICE CRAFT.

[] -- AT PIERS AND QUAYS -- NO CHANGE IN OB EXCEPT FOR THE ADDITION OF 1 F-CLASS SS. IN GUBA AVACHINSKAYA -- NO CHANGE IN OB EXCEPT FOR THE DELETION OF 3 OSA-CLASS PTFG AND 1 P6-CLASS PT.

NO NEW CONSTRUCTION, CHANGES IN FACILITIES, OR PREVIOUSLY UNREPORTED FEATURES OBSERVED.

PETROPAVLOVSK NAVAL MISSILE STORAGE

UR 5257N 15827E

NO MISSILES, MISSILE-RELATED EQUIPMENT, NEW CONSTRUCTION, CHANGES IN FACILITIES, OR PREVIOUSLY UNREPORTED FEATURES OBSERVED.

25X1

TOP SECRET CHESS RUFF

MISSION 4031, 17-24 AUGUST 1966

PETROPAVLOVSK NVL MSL SUPPORT FACILITY UR 5257N 15829E

THREE MOBILE CRANES ARE NEAR HEAD OF PIER AND 1 LARGE MOBILE CRANE IS ON MARGINAL WHARF.

OB -- [] -- 1 LAMA-CLASS AEM.

[] -- 1 OSA-CLASS PTFG AND 6 SMALL SERVICE CRAFT (1 OFFSHORE).

PETROPAVLOVSK NVL B SELDEVAYA BAY UR 5254N 15830E

OB -- [] - AT SHIPYARD QUAY -- 1 PROBABLE E-I-CLASS SSGN, 3 F/Z-CLASS SS (2 IN FLOATING DOCKS), 1 UNIDENTIFIED SS, 1 RIGA-CLASS DE, 1 DNEPR-CLASS ASR, 1 NEW CLASS ASL/AEM, 1 ZEYA-CLASS YRSN, 3 AT, 1 LARGE PASSENGER VESSEL, 1 LARGE AUXILIARY, 2 FLOATING DOCKS, 1 FLOATING CRANE, AND SEVERAL SMALL SERVICE CRAFT. SE AREA -- 1 FLOATING DOCK, 1 AUXILIARY, AND 3 SMALL SERVICE CRAFT.

[] -- 1 KOTLIN-CLASS DD AND 1 SKORYY-CLASS DD ARE MOORED OFFSHORE, OTHERWISE NO CHANGE IN OB.

A NEW BUILDING FOUNDATION IS LOCATED ON THE FILLED AREA IMMEDIATELY SOUTH OF INSTALLATION. NO OTHER CHANGES IN FACILITIES OBSERVED.

VLADIMIR SUBMARINE BASE UR 4356N 13528E

OB -- 5 W-CLASS SS (1 AT PIER AND 4 ALONGSIDE ASL), 1 PROBABLE L-II-CLASS SS AT PIER, 1 SHCH-IV-CLASS OSS (AGROUND BETWEEN PIERS), 1 ATREK-CLASS ASL, 1 PROBABLE YPT, AND 1 PROBABLE AD OFFSHORE, 3 SMALL SERVICE CRAFT AT PIER, AND 2 YAGT OFFSHORE. AT PORT FACILITY -- 1 T-43-CLASS AGS, 1 T-43-CLASS MSF, 6 PROBABLE YP, 1 PROBABLE AT/AB, AND 1 FLOATING SHEARLEGS CRANE.

TOP SECRET CHESS RUFF

MISSION 4031, 17-24 AUGUST 1966

AT PT BASE -- 1 POSSIBLE P-4-CLASS PT ON STORAGE WAY AND 1 AUXILIARY AT PIER.

[REDACTED]

NO NEW CONSTRUCTION, CHANGES IN FACILITIES, OR PREVIOUSLY UNREPORTED FEATURES OBSERVED.

[REDACTED]

VLADIVOSTOK SUBMARINE BASE ULISA BAY UR 4304N 13155E

OB -- AT SUBMARINE BASE -- 1 F/Z-CLASS SS, 3 R/W-CLASS SS, AND 5 M-V-CLASS OSS.
AT BYSTRY SHIPYARD -- 6 OSA-CLASS PTFG UNDER CONSTRUCTION ON BUILDING WAYS AND 5 OSA-CLASS PTFG AT QUAYS.
NEAR PT BASE -- 5 OSA-CLASS PTFG, 3 KOMAR-CLASS PTG, 7 P-6 HULLS, 1 KRONSHADT-CLASS PC, AND 1 JAPANESE TYPE-B AGT.

NO NEW CONSTRUCTION, CHANGES IN FACILITIES, OR PREVIOUSLY UNREPORTED FEATURES OBSERVED.

[REDACTED]

ODESSA NAVAL BASE & SHIPYARD MARTI UR 4629N 03044E

OB -- 3 POSSIBLE SS, 1 POSSIBLE DD, 2 POSSIBLE LSM, AND 7 POSSIBLE LCU.

ONLY EAST SECTOR OF BASIN IS VISIBLE.

CLOUD SHADOW AND POOR VESSEL/WATER CONTRAST LIMIT INTERPRETATION.

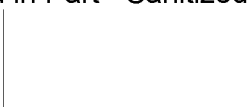
NO NEW CONSTRUCTION, CHANGES IN FACILITIES, OR PREVIOUSLY UNREPORTED FEATURES OBSERVED.

[REDACTED]

BOBRUYSK SAM SUPPORT FACILITY UR 5308N 02915E BONUS 1

ON EAST EDGE OF BOBRUYSK AND ON NORTH EDGE OF BOBRUYSK ARMY BARRACKS EAST AL-2.
FACILITY CONSISTS OF 1 LARGE AND 1 SMALL DRIVE-THROUGH

[REDACTED]



TOP SECRET CHESS RUFF



MISSION 4031, 17-24 AUGUST 1966

BUILDING AND 2 LARGE STORAGE BUILDINGS. EQUIPMENT INCLUDES 3 TRANSPORTERS WITH PRIME MOVERS, 1 TRANSPORTER WITHOUT PRIME MOVER, AT LEAST 8 MISSILE CANISTERS, 9 LAUNCHERS (3 WITH PRIME MOVERS), 7 PROBABLE VANS, AN UNIDENTIFIED RADAR, A TRUCK-MOUNTED CRANE, A PROBABLE OXIDIZER TRANSPORTER, AND APPROXIMATELY 30 OTHER VEHICLES/PIECES OF EQUIPMENT.

(SEE ATTACHMENT)



**Air
Facilities**

TOP SECRET CHESS RUFF

MISSION 4031, 17-24 AUGUST 1966

AIR FACILITIES

BOBRUYSK AIRFIELD

UR 5306N 02912E

OB -- 82 BADGER AND 3 CAB.

THE PROBABLE ASM FACILITY APPEARS NEARLY COMPLETE. FIFTEEN SHIPPING CRATES ARE OBSERVED IN THE FACILITY.

NO NEW CONSTRUCTION, CHANGES IN FACILITIES, OR PREVIOUSLY UNREPORTED FEATURES OBSERVED.

[Redacted]

PEI-CHING/LAN-TIEN-CHANG AIRFIELD

CH 3958N 11615E

OB -- 2 COOKPOT, 4 COOT, 2 VISCOUNT, AND 1 CRATE.

NO NEW CONSTRUCTION, CHANGES IN FACILITIES, OR PREVIOUSLY UNREPORTED FEATURES OBSERVED.

(SEE ATTACHMENT)

[Redacted]

SHA-HO AIRFIELD

CH 3653N 11425E NO COMOR

4.5 NM SW OF SHA-HO. AIRFIELD IS IN FINAL STAGES OF CONSTRUCTION. 8,500 X 170 FT NNW/SSE SERVICEABLE CONCRETE RUNWAY, A PARALLEL TAXIWAY NEARING COMPLETION (SSE PORTION IS NOW CONCRETE), 2 END CONNECTING LINKS (1 PARTIALLY CONCRETE), 2 CROSSOVER LINKS (1 PARTIALLY CONCRETE), 3 PARKING APRONS (2 CONCRETE), 2 ALERT APRONS (1 PARTIALLY CONCRETE), 18 REVETTED HARDSTANDS (7 COMPLETED AND 11 IN FINAL STAGES OF CONSTRUCTION), AND A FIRING-IN BUTT IN FINAL STAGES OF CONSTRUCTION. AN ADDITIONAL TAXIWAY EXTENDS NW AND INCLUDES AT LEAST 8 ADDITIONAL REVETTED HARDSTANDS IN VARIOUS STAGES OF CONSTRUCTION.

SUPPORT FACILITIES INCLUDE AN OPERATIONS BUILDING AND 2 HANGARS UNDER CONSTRUCTION. A POL STORAGE AREA LOCATED WEST OF THE AIRFIELD IS UNDER CONSTRUCTION AND CONSISTS OF 4 BLIMP-TYPE TANKS. AT LEAST 80 TEMPORARY HOUSING/STORAGE BUILDINGS ARE ADJACENT TO AIRFIELD. AIRFIELD IS SERVICED BY A RAIL SPUR.

[Redacted]

25X1



TOP SECRET CHESS RUFF



MISSION 4031, 17-24 AUGUST 1966

VEHICLES/PIECES OF EQUIPMENT -- 10 TRACTORS WITH SCRAPERS, 4 PROBABLE GRADERS, AND AT LEAST 25 TRUCKS AND PIECES OF EQUIPMENT.

(SEE ATTACHMENT)

25X1



**Nuclear
Energy**

Page Denied

**Naval
Activity /
Ports**

TOP SECRET CHESS RUFF

MISSION 4031, 17-24 AUGUST 1966

NAVAL ACTIVITY/PORTS

25X1

CHING-TAO NAVAL DOCKYARD

CH 3604N 12019E

OB -- 1 PROBABLE KRONSHADT-CLASS PC, 2 PROBABLE TRAWLERS/MINESWEEPERS, 4 POSSIBLE PT/PGM, 7 PROBABLE YP, AND NUMEROUS SMALL CRAFT.

NO NEW CONSTRUCTION, CHANGES IN FACILITIES, OR PREVIOUSLY UNREPORTED FEATURES OBSERVED.

25X1

SHAN-TOU NAVAL BASE

CH 2321N 11640E

OB -- AT NAVAL BASE -- 4 SHANGHAI-CLASS PTF, 1 PROBABLE CLASS OPGM, 4 LCVP, 1 PROBABLE TRAWLER/MINESWEEPER, 1 PROBABLE YP, AND 1 SMALL CRAFT. AT BOATYARD -- 1 PROBABLE LCVP AND 1 POSSIBLE YP.

NO BUILDUP OBSERVED.

NO NEW CONSTRUCTION, CHANGES IN FACILITIES, OR PREVIOUSLY UNREPORTED FEATURES OBSERVED.

25X1

HUANG-PU NAVAL BASE AND SHIPYARD

CH 2305N 11325E

OB -- 1 HAINAN-CLASS PC, 1 PROBABLE KRONSHADT-CLASS PC, 10 SHANGHAI-CLASS PTF, 2 SWATOW-CLASS PGM, 1 LST-1-CLASS LST, 1 LCT-3-CLASS LCU, 3 YO, 6 SMALL VESSELS ON MARINE RAILWAY, 1 SMALL VESSEL ON BUILDING WAY, AND NUMEROUS SMALL VESSELS AT THE NAVAL BASE.

NO NEW CONSTRUCTION, CHANGES IN FACILITIES, OR PREVIOUSLY UNREPORTED FEATURES OBSERVED.

25X1

SHAN-TOU MOTOR TORPEDO BOAT BASE

CH 2312N 11637E

OB -- 7 PROBABLE PT ON WAYS, 2 MEDIUM VESSELS, AND 6 SMALL VESSELS IN WATER.

NO EVIDENCE OF INCREASED ACTIVITY OR STOCKPILING

25X1

TOP SECRET CHESS RUFF

MISSION 4031, 17-24 AUGUST 1966

OBSERVED.

NO NEW CONSTRUCTION, CHANGES IN FACILITIES, OR PREVIOUSLY UNREPORTED FEATURES OBSERVED.

[Redacted]

WU-HAN SHIPYARD CHUNG-YANG

CH 3032N 11417E

OB -- 1 R/W-CLASS SS AT FITTING-OUT BARGE, 3 POSSIBLE YP AT FITTING-OUT BARGES, 2 YP/PT PARTIALLY COVERED BY WEATHER SHEDS, AND 1 POSSIBLE VESSEL UNDER WEATHER SHEDS ON WAY NEAREST LAUNCHING RAMP.

NUMEROUS WEATHER SHEDS ARE SCATTERED THROUGHOUT THE BUILDING AREA. A SHORT 3-RAIL TRANSVERSER LEADS INTO THE SIDE DOOR OF THE CONSTRUCTION HALL.

NO NEW CONSTRUCTION, CHANGES IN FACILITIES, OR PREVIOUSLY UNREPORTED FEATURES OBSERVED.

[Redacted]

BEN THUY PORT FACILITIES

VN 1839N 10542E

SERVICEABILITY OF POWERPLANT IS UNDETERMINED, RAIL SPUR REMAINS UNSERVICEABLE. NO OTHER CHANGES, CONSTRUCTION, OR PREVIOUSLY UNREPORTED FEATURES OBSERVED.

VESSELS AT WHARF -- 1 PROBABLE RIVER VESSEL CAPSIZED AND 1 NON-COMBATANT VESSEL DESTROYED (ONLY STERN VISIBLE).

[Redacted]

[Redacted]

**Military
Activity**

25X1

TOP SECRET CHESS RUFF

MISSION 4031, 17-24 AUGUST 1966

MILITARY ACTIVITY

25X1

NOVA ZAGORA ARMY BARRACKS NORTH 1 BU 4230N 02600E

NO TANKS OBSERVED.

AREA APPEARS OCCUPIED AND ALL PORTIONS APPEAR ACTIVE.

[REDACTED]

BOBRUYSK ARMY BARRACKS SOUTH AL 3 UR 5308N 02915E

THIS TARGET IS THE SAME AS [REDACTED] AND IS REPORTED UNDER THAT NUMBER.

[REDACTED]

BOBRUYSK ARMY BARRACKS EAST AL 2 UR 5308N 02914E

SE EDGE OF BOBRUYSK. INSTALLATION, LOCATED WITHIN THE CONFINES OF AN OLD FORT, CONTAINS 1 LARGE C-SHAPED BARRACKS, 1 IRREGULARLY SHAPED BARRACKS, 15 BARRACKS, 4 ADMINISTRATION BUILDINGS (1 C-SHAPED), 4 QUARTERS, 38 VEHICLE STORAGE BUILDINGS, 20 STORAGE BUILDINGS, APPROXIMATELY 25 SUPPORT BUILDINGS, 2 ATHLETIC FIELDS, AND A PARKING FIELD.

A NEWLY IDENTIFIED SAM SUPPORT FACILITY IS ADJACENT TO THE NORTH EDGE OF THIS INSTALLATION. (SEE MISSILE BONUS, OAK PART III).

OB -- 1 FROG RESUPPLY TRANSPORT TRAILER WITH PRIME MOVER, 3 CANVAS-COVERED PROBABLE FROG TEL (PT-76 TYPE), 1 PROBABLE FROG 6 TRAINING VEHICLE, 3 CARGO TRUCKS WITH LOWBED TRAILERS, 7 TANKS/ASSAULT GUNS, 35 PROBABLE PMP PONTONS, 16 PROBABLE TRACKED PRIME MOVERS, 6 POSSIBLE TRUCK-MOUNTED CRANES, APPROXIMATELY 150 CARGO TRUCKS, 26 CANVAS-COVERED VEHICLES, AND APPROXIMATELY 25 OTHER VEHICLES/PIECES OF EQUIPMENT.

(SEE ATTACHMENT)

[REDACTED]

25X1

TOP SECRET CHESS RUFF

MISSION 4031, 17-24 AUGUST 1966

BREST ARMY BARRACKS CITADEL NORTH AL 4 UR 5206N 02339E

OB -- 12 FA PIECES, 13 CARGO TRUCKS, 5 BUSES, AND APPROXIMATELY 25 OTHER VEHICLES. APPROXIMATELY 25 PYRAMIDAL TENTS OBSERVED THROUGHOUT THE INSTALLATION.

NO NEW CONSTRUCTION, CHANGES IN FACILITIES, OR PREVIOUSLY UNREPORTED FEATURES OBSERVED.

[Redacted]

BREST MILITARY TRAINING AREA UR 5201N 02344E

AREA APPEARS ACTIVE AND IN USE.

NO NEW CONSTRUCTION, CHANGES IN FACILITIES, OR PREVIOUSLY UNREPORTED FEATURES OBSERVED.

NO VEHICLES, WEAPONS, OR EQUIPMENT OBSERVED.

[Redacted]

CHOP ARMY BARRACKS UR 4826N 02214E

OB -- 6 PROBABLE CARGO TRUCKS AND 5 OTHER VEHICLES.

NO NEW CONSTRUCTION, CHANGES IN FACILITIES, OR PREVIOUSLY UNREPORTED FEATURES OBSERVED.

[Redacted]

KAUNAS ARMY BARRACKS AND DEPOT AL 9 UR 5452N 02356E

NO VEHICLES, WEAPONS, OR EQUIPMENT OBSERVED.

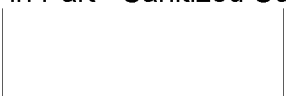
AREA APPEARS OCCUPIED AND ALL PORTIONS APPEAR ACTIVE.

[Redacted]

KAUNAS ARMY BARRACKS SOUTH AL 1 UR 5451N 02356E

SOUTHERN PART OF KAUNAS. PARTIALLY SECURED INSTALLATION CONTAINS 19 LARGE BARRACKS, 7 ADMINISTRATION BUILDINGS, 6 VEHICLE MAINTENANCE/STORAGE BUILDINGS, 8 PROBABLE STORAGE

[Redacted]



TOP SECRET CHESS RUFF



MISSION 4031, 17-24 AUGUST 1966

BUILDINGS, AND APPROXIMATELY 60 STORAGE/SUPPORT BUILDINGS.

OB -- 12 PROBABLE CARGO TRUCKS AND 33 OTHER VEHICLES.



25X1

25X1

KAUNAS MILITARY TRAINING AREA TA 1 UR 5448N 02354E

NO NEW CONSTRUCTION, CHANGES IN FACILITIES, OR PREVIOUSLY UNREPORTED FEATURES OBSERVED.

NO VEHICLES, WEAPONS, OR EQUIPMENT OBSERVED.



25X1

MINGECHAUR POSSIBLE ARMY BARRACKS UR 4046N 04658E

OB -- APPROXIMATELY 20 VEHICLES/PIECES OF EQUIPMENT. AREA APPEARS AGRICULTURAL RATHER THAN MILITARY.

NO NEW CONSTRUCTION, CHANGES IN FACILITIES, OR PREVIOUSLY UNREPORTED FEATURES OBSERVED.



25X1

NESTEROV AMMUNITION STORAGE UR 5003N 02359E

0.5 NM EAST OF NESTEROV. SECURED AREA CONTAINS 5 REVETTED STORAGE BUILDINGS, 1 SUPPORT BUILDING, 1 SMALL-ARMS FIRING RANGE, AND 2 FIGURE-8 DRIVER-TRAINING COURSES.

NO VEHICLES, WEAPONS, OR EQUIPMENT OBSERVED.



25X1

NESTEROV ARMY BARRACKS AL 1 UR 5003N 02358E

OB -- 1 CARGO TRUCK.

AREA APPEARS OCCUPIED AND ALL PORTIONS APPEAR ACTIVE.



25X1

25X1



TOP SECRET CHESS RUFF

MISSION 4031, 17-24 AUGUST 1966

VOLYA VYSOTSKA ARMY BARRACKS AL 1 UR 5005N 02355E

OB -- 6 UNIDENTIFIED VEHICLES/PIECES OF EQUIPMENT.

NO NEW CONSTRUCTION, CHANGES IN FACILITIES, OR PREVIOUSLY UNREPORTED FEATURES OBSERVED.

[Redacted]

ROSTOV ARMY BARRACKS NORTH UR 4715N 03942E

NO TANKS OBSERVED.

AREA APPEARS OCCUPIED AND ALL PORTIONS APPEAR ACTIVE.

[Redacted]

ROSTOV ARMY BARRACKS NORTHWEST AL 7 UR 4715N 03941E

NO TANKS OBSERVED.

AREA APPEARS OCCUPIED AND ALL PORTIONS APPEAR ACTIVE.

[Redacted]

SOVETSK ARMY BARRACKS CENTRAL AL 1 UR 5504N 02153E

OB -- AT LEAST 50 CARGO TRUCKS.

AREA APPEARS OCCUPIED AND ALL PORTIONS APPEAR ACTIVE.

[Redacted]

ULAN-UDE BKS & TRAINING AREA ONOKHOY SW UR 5149N 10755E

NO NEW CONSTRUCTION OR CHANGES IN FACILITIES OBSERVED.

NO VEHICLES, WEAPONS, OR EQUIPMENT OBSERVED.

NO INDICATION OF MILITARY ACTIVITY OBSERVED.

[Redacted]

TOP SECRET CHESS RUFF

MISSION 4031, 17-24 AUGUST 1966

ZHITOMIR ARMY BARRACKS NORTHWEST AL 2

UR 5017N 02837E

NO TANKS OBSERVED.

AREA APPEARS OCCUPIED AND ALL PORTIONS APPEAR ACTIVE.

LANG SON ARMY BARRACKS

VN 2150N 10645E

IDENTIFICATION ONLY.

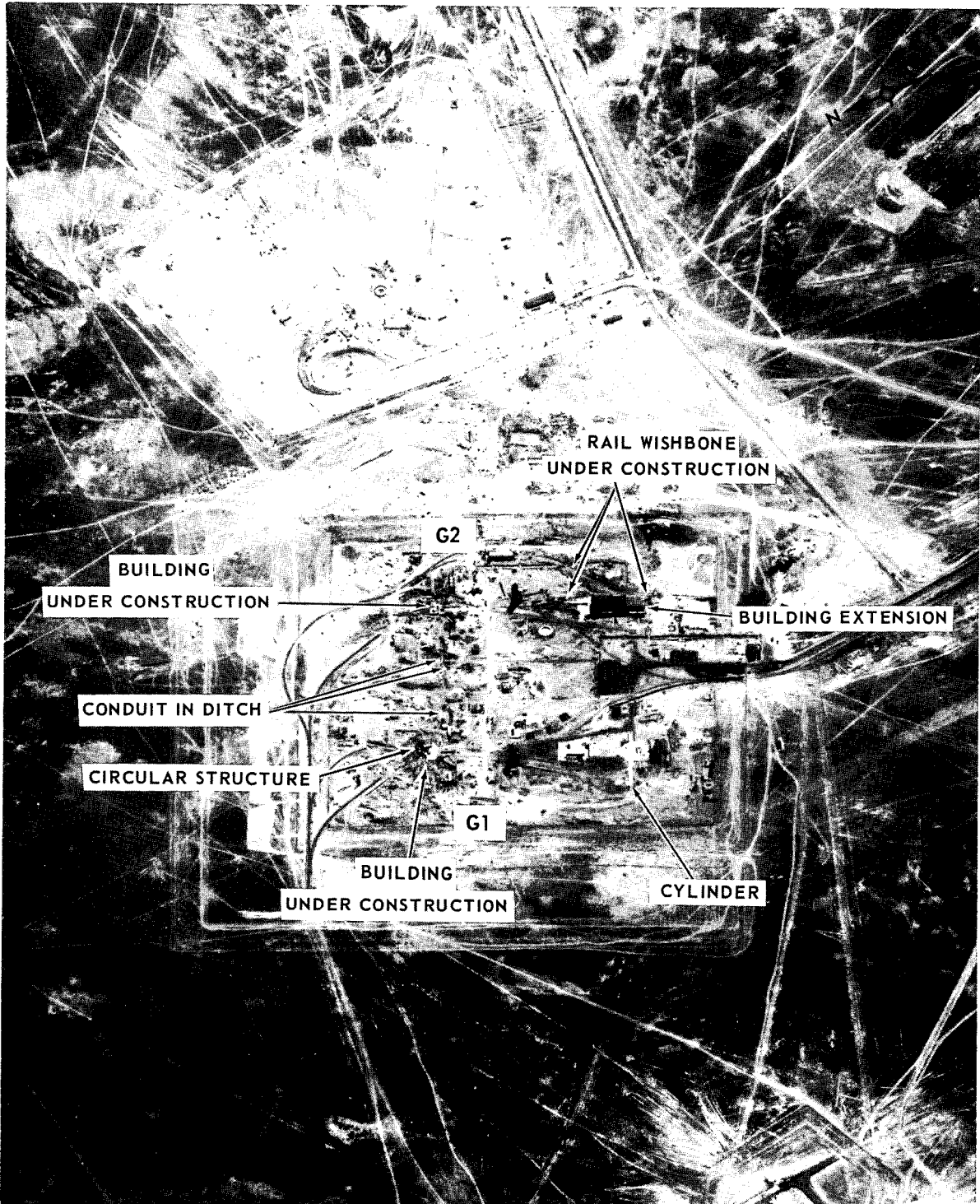
Attachments

25X1

TOP SECRET CHESS RUFF

MISSION 4031, 17-24 AUGUST 1966

ATTACHMENT 1



LAUNCH AREA G1-G2, LAUNCH COMPLEX G, TYURATAM MISSILE TEST CENTER, USSR

NPIC L-1696 (8/66)

25X1

25X1

TOP SECRET CHESS RUFF

25X1

TOP SECRET CHESS RUFF

MISSION 4031, 17-24 AUGUST 1966

ATTACHMENT 2



LAUNCH AREA G3-G4, LAUNCH COMPLEX G, TYURATAM MISSILE TEST CENTER, USS

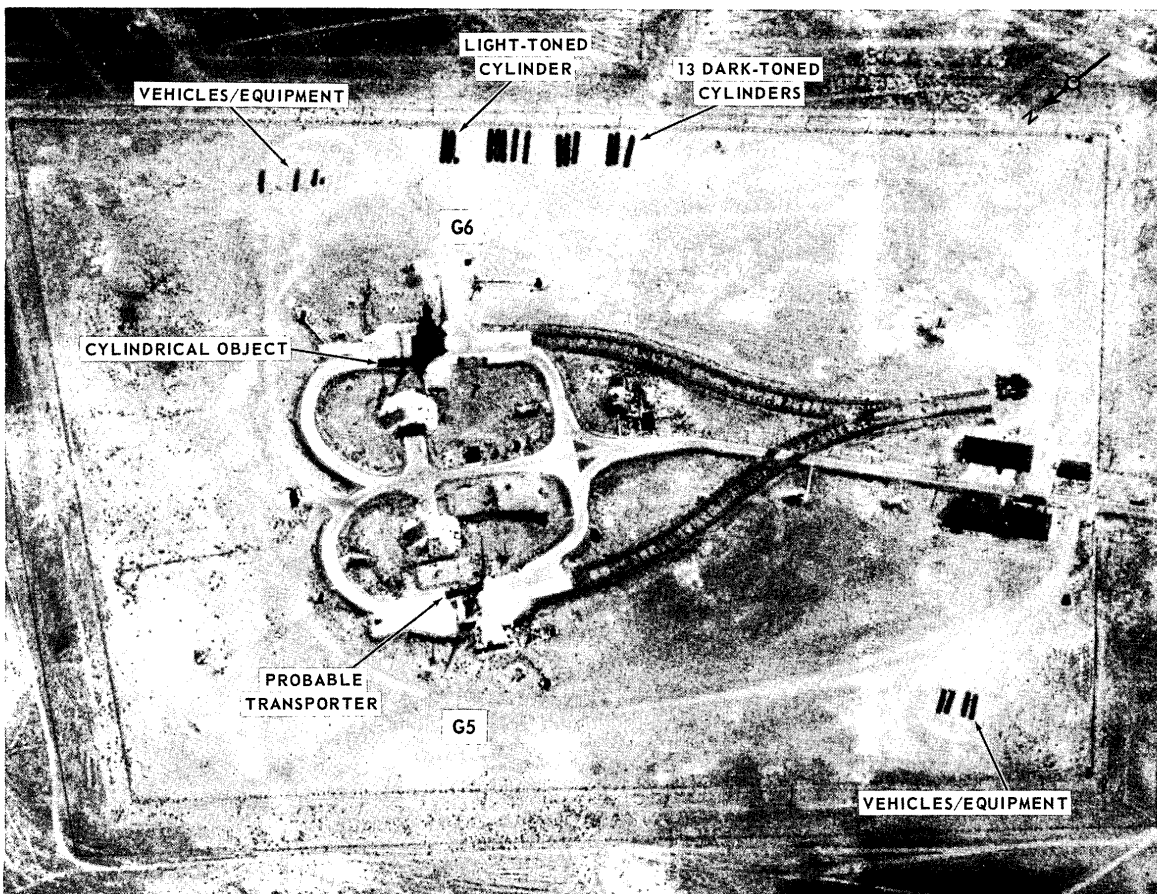
(8/66)

25X1

25X1

TOP SECRET CHESS RUFF

25X1



NPIC L-1698 (8/66)

LAUNCH AREA G5-G6, LAUNCH COMPLEX G, TYURATAM MISSILE TEST CENTER, USSR

TOP SECRET CHESS RUFF

TOP SECRET CHESS RUFF
MISSION 4031, 17-24 AUGUST 1966

25X1

ATTACHMENT 3

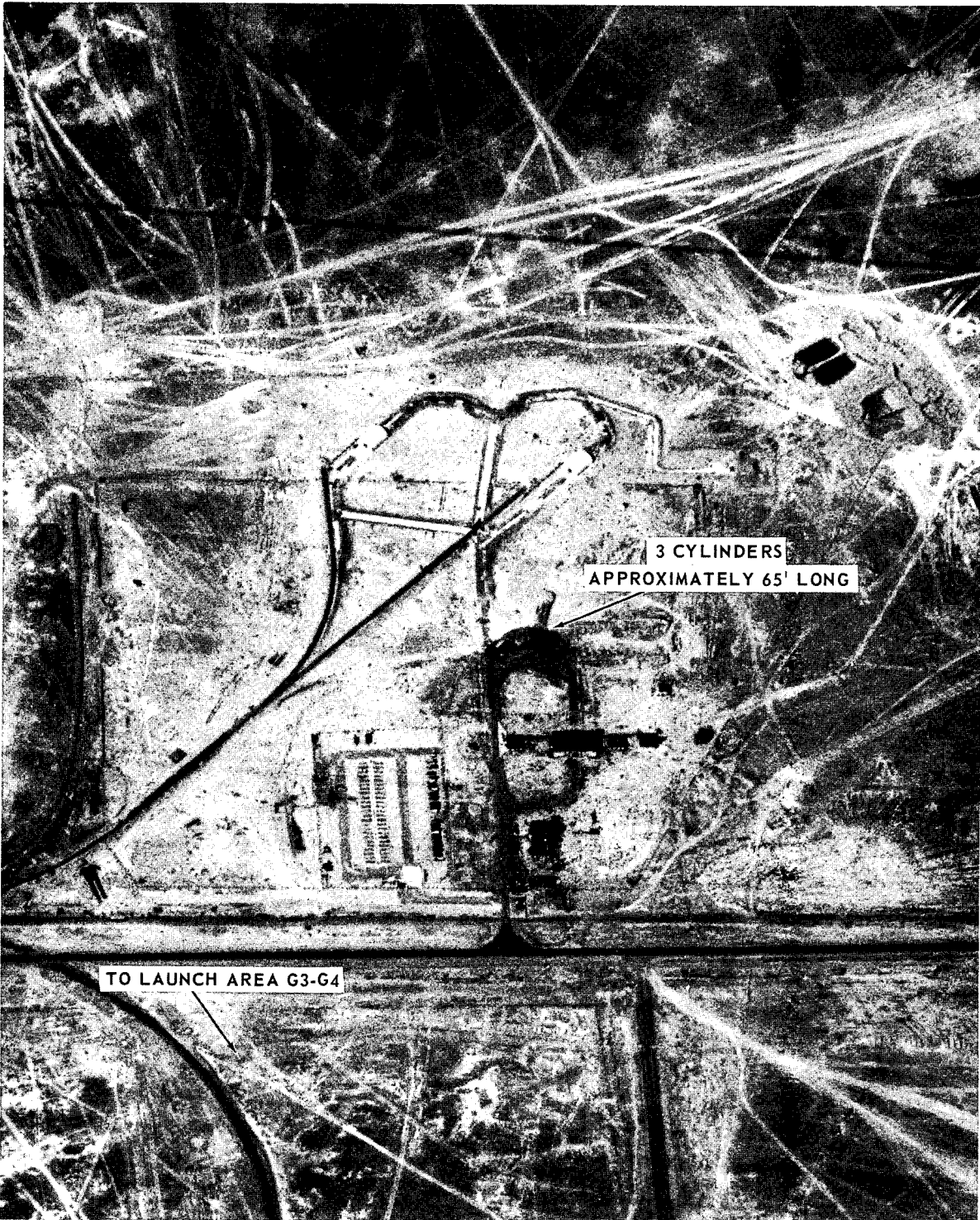
25X1

TOP SECRET CHESS RUFF

MISSION 4031, 17-24 AUGUST 1966

ATTACHMENT 4

25X1



TO LAUNCH AREA G3-G4

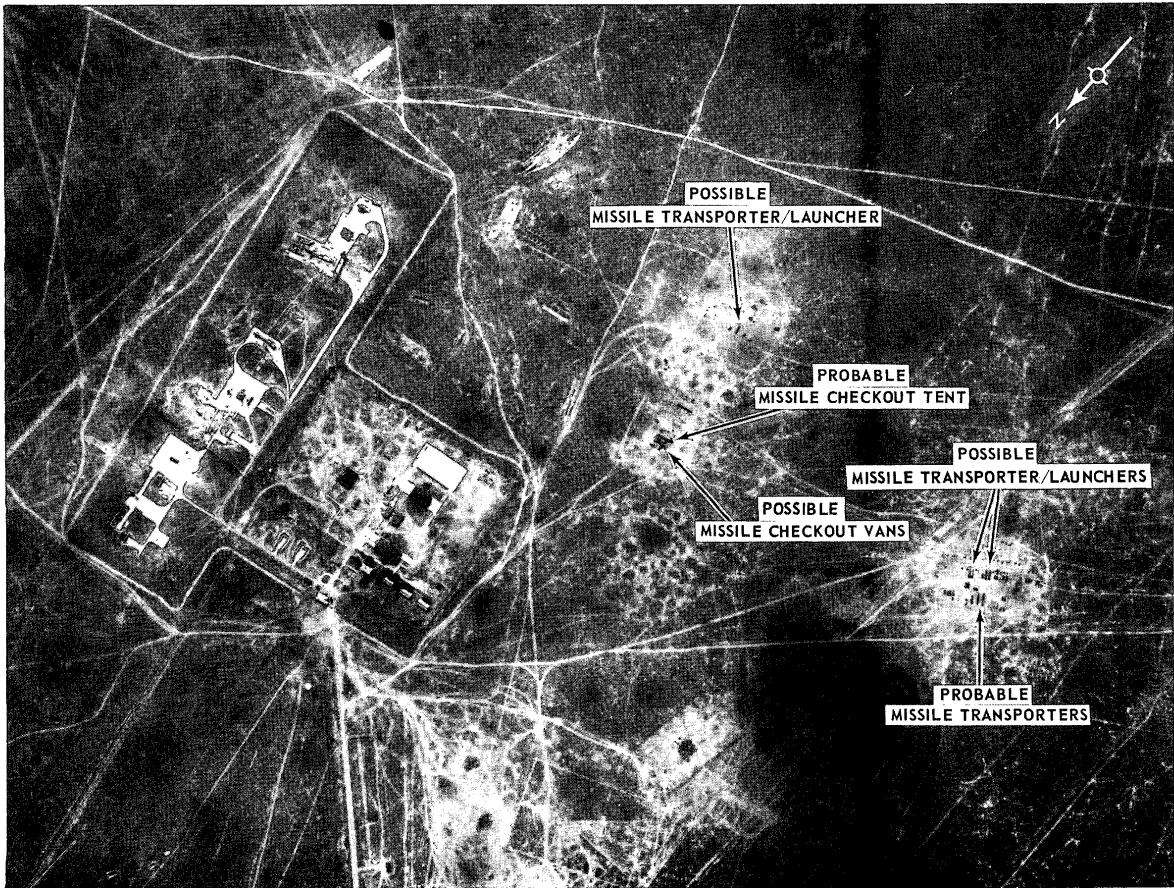
3 CYLINDERS
APPROXIMATELY 65' LONG

NPIC L-1699 (8/66)

POSSIBLE COMPONENT CHECKOUT/HANDLING FACILITY, LAUNCH COMPLEX G, TYURATAM MISSILE TEST CENTER, USSR

TOP SECRET CHESS RUFF

25X1



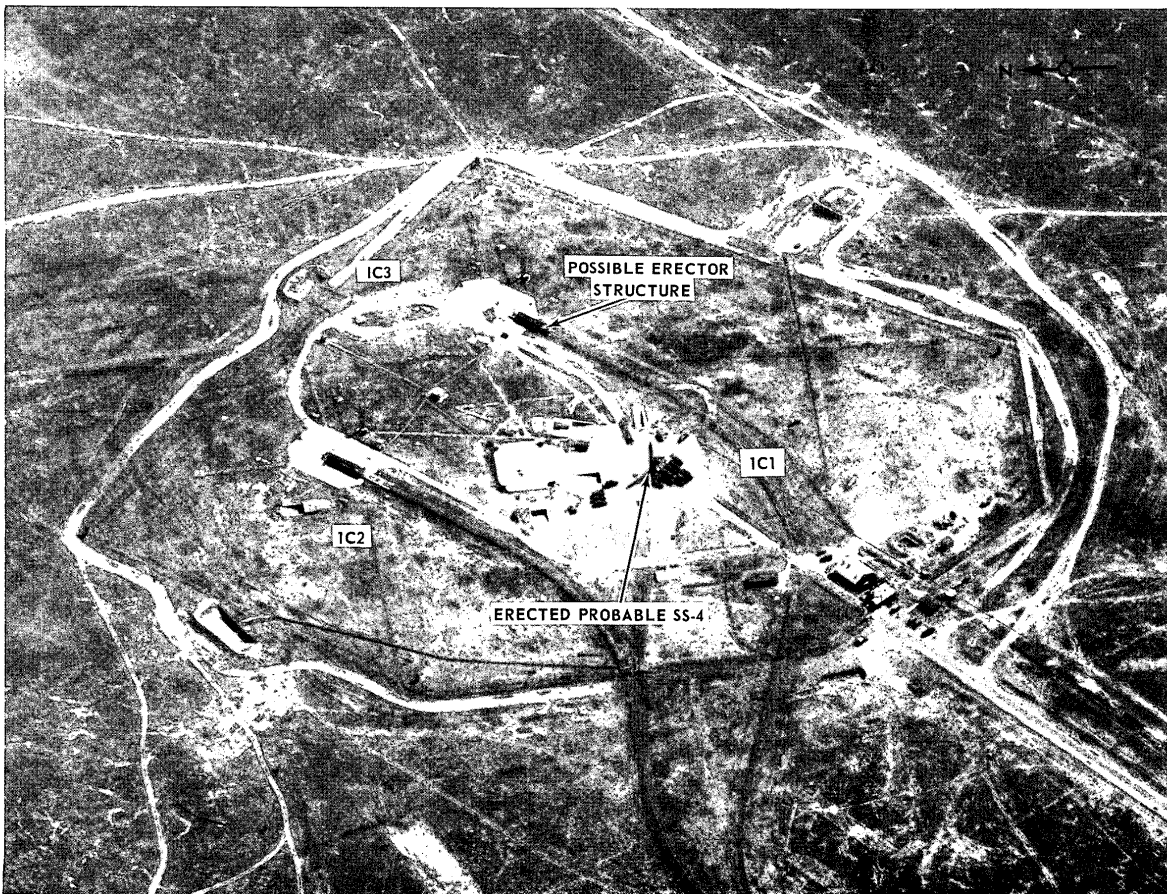
NPIC L-1700 (8/66)

LAUNCH COMPLEX B, KAPUSTIN YAR/VLADIMIROVKA MISSILE TEST CENTER, USSR ()

TOP SECRET CHESS RUFF

TOP SECRET CHESS RUFF
MISSION 4031, 17-24 AUGUST 1966

25X1



NPIC L-1701 (8/66)

LAUNCH AREA 1C, LAUNCH COMPLEX C, KAPUSTIN YAR/VLADIMIROVKA MISSILE TEST CENTER, USSR

TOP SECRET CHESS RUFF

TOP SECRET CHESS RUFF
MISSION 4031, 17-24 AUGUST 1966

25X1

ATTACHMENT 6

25X1

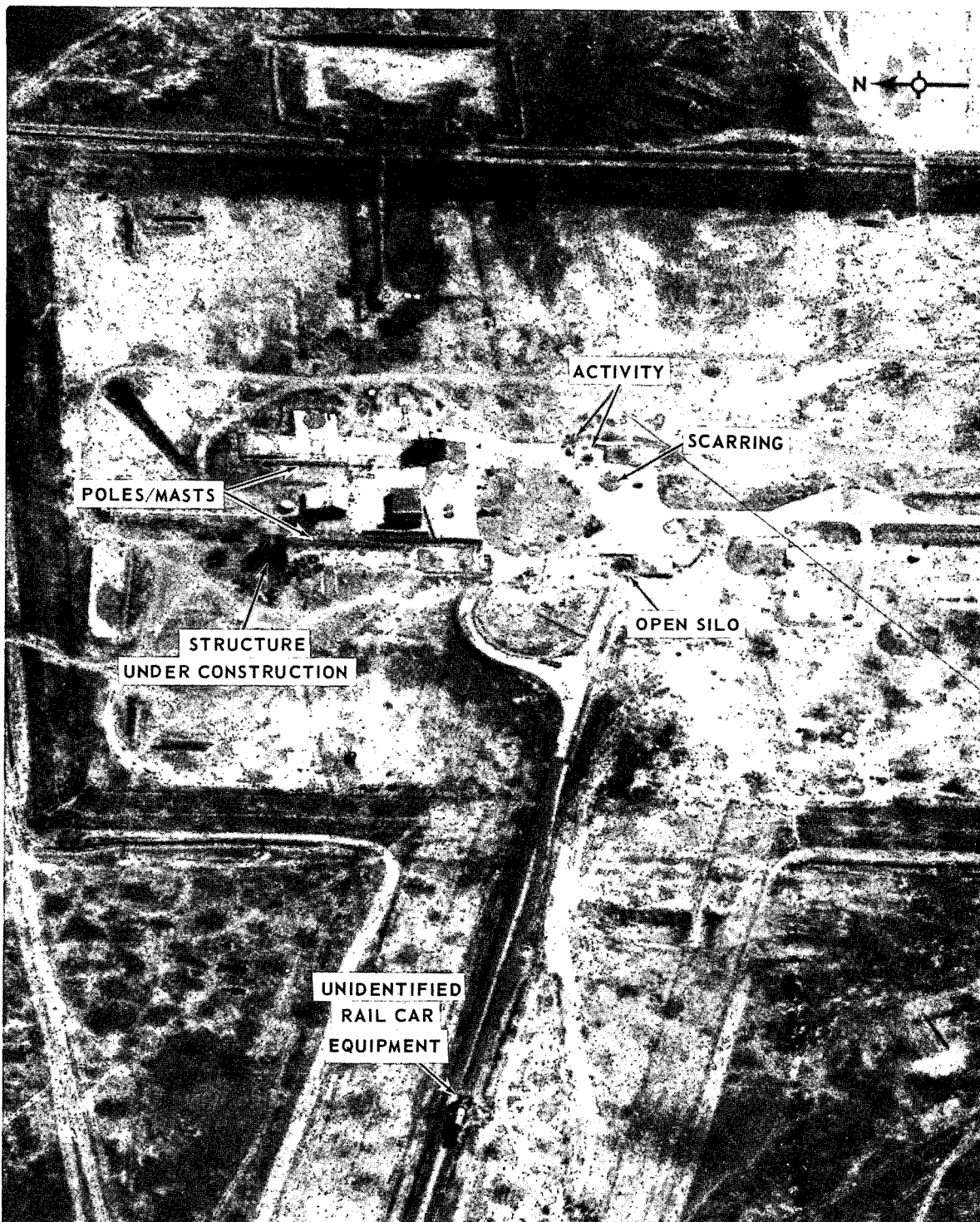
25X1

25X1

TOP SECRET CHESS RUFF

MISSION 4031, 17-24 AUGUST 1966

ATTACHMENT 7



LAUNCH SITE 4C1, LAUNCH COMPLEX C, KAPUSTIN YAR/VLADIMIROVKA MISSILE TEST CENTER, USSR

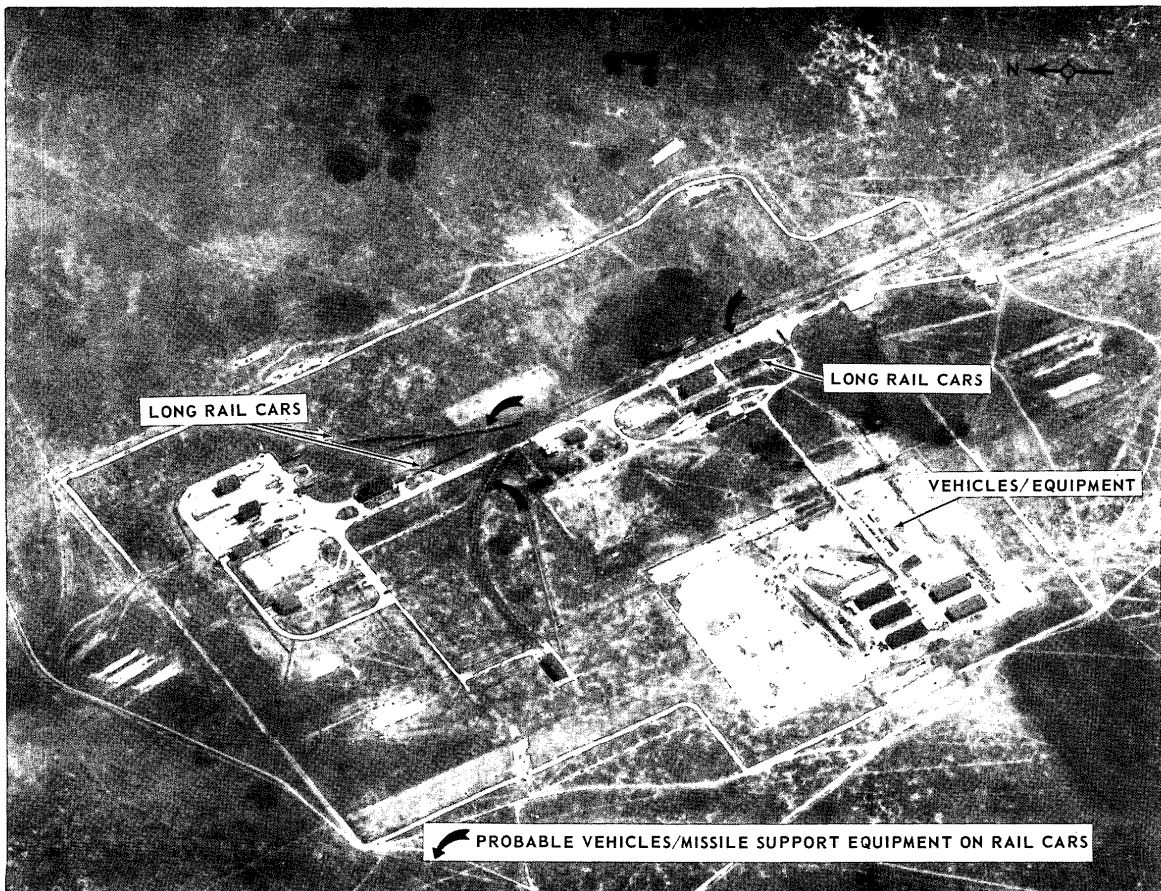
NPIC L-1702 (8/66)

25X1

TOP SECRET CHESS RUFF

25X1

25X1



NMFC L-1703 (8/66)
 PROBABLE MISSILE ASSEMBLY AND CHECKOUT AREA, LAUNCH COMPLEX C, KAPUSTIN YAR/VLADIMIROVKA MISSILE TEST CENTER, USSR

TOP SECRET CHESS RUFF

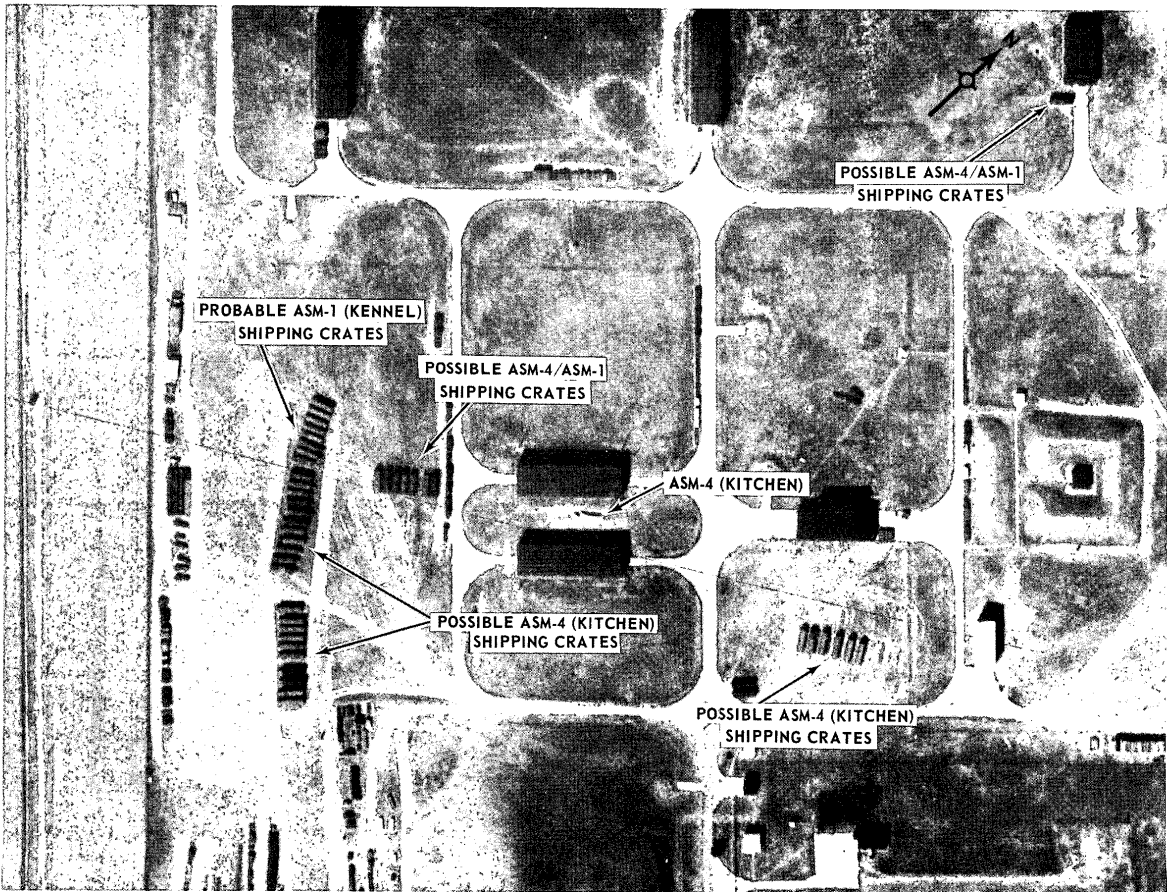
TOP SECRET CHESS RUFF

MISSION 4031, 17-24 AUGUST 1966

25X1

ATTACHMENT 8

25X1



NPIC L-1704 (8/66)

MISSILE STORAGE AND HANDLING AREA, KAPUSTIN YAR/VLADIMIROVKA MISSILE TEST CENTER, USSR

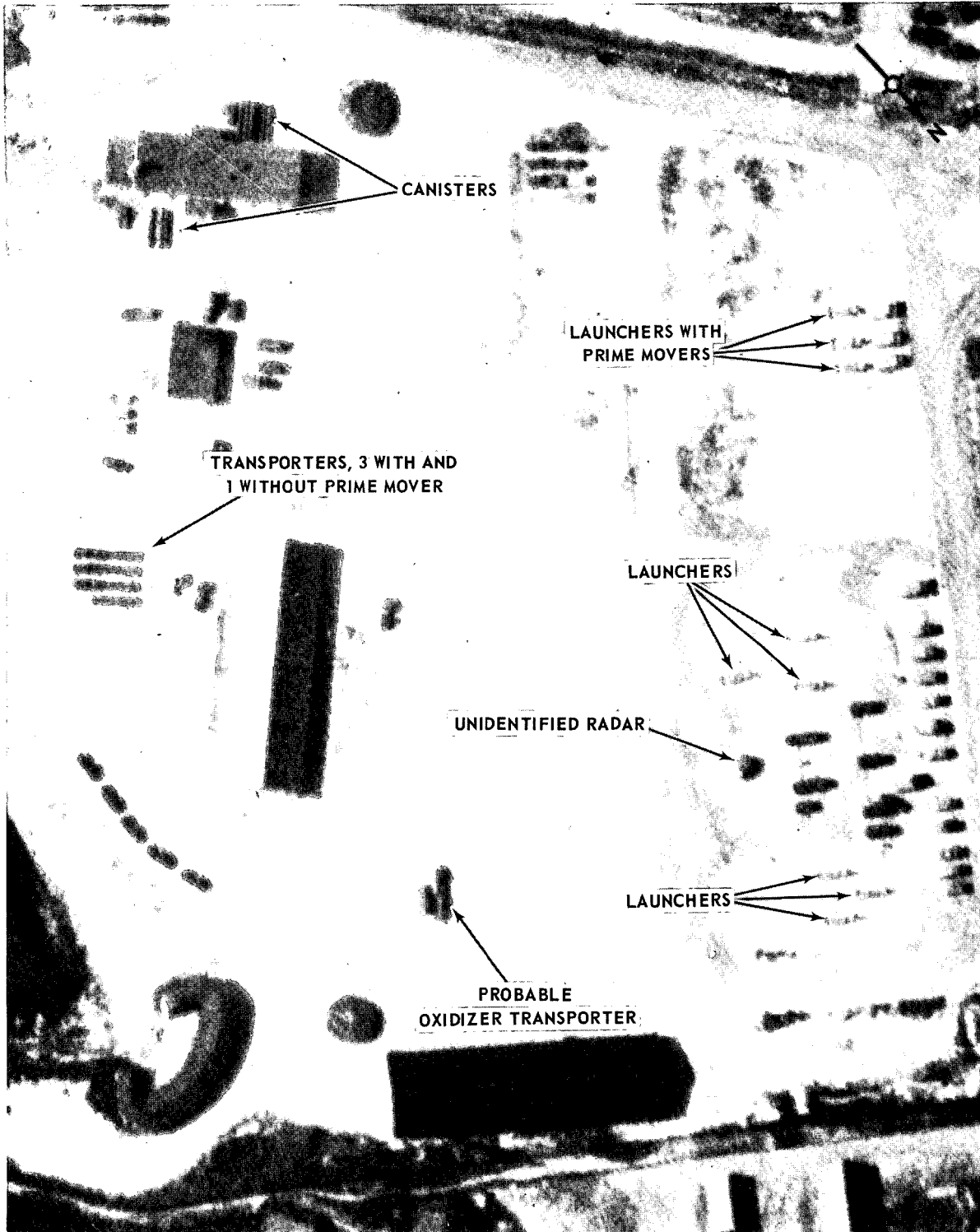
TOP SECRET CHESS RUFF

TOP SECRET CHESS RUFF
MISSION 4031, 17-24 AUGUST 1966

TOP SECRET CHESS RUFF

MISSION 4031, 17-24 AUGUST 1966

ATTACHMENT 10



SAM SUPPORT FACILITY, BOBRUYSK, USSR (NO COMOR).

NPIC L-1705 (8/66)

TOP SECRET CHESS RUFF

25X1



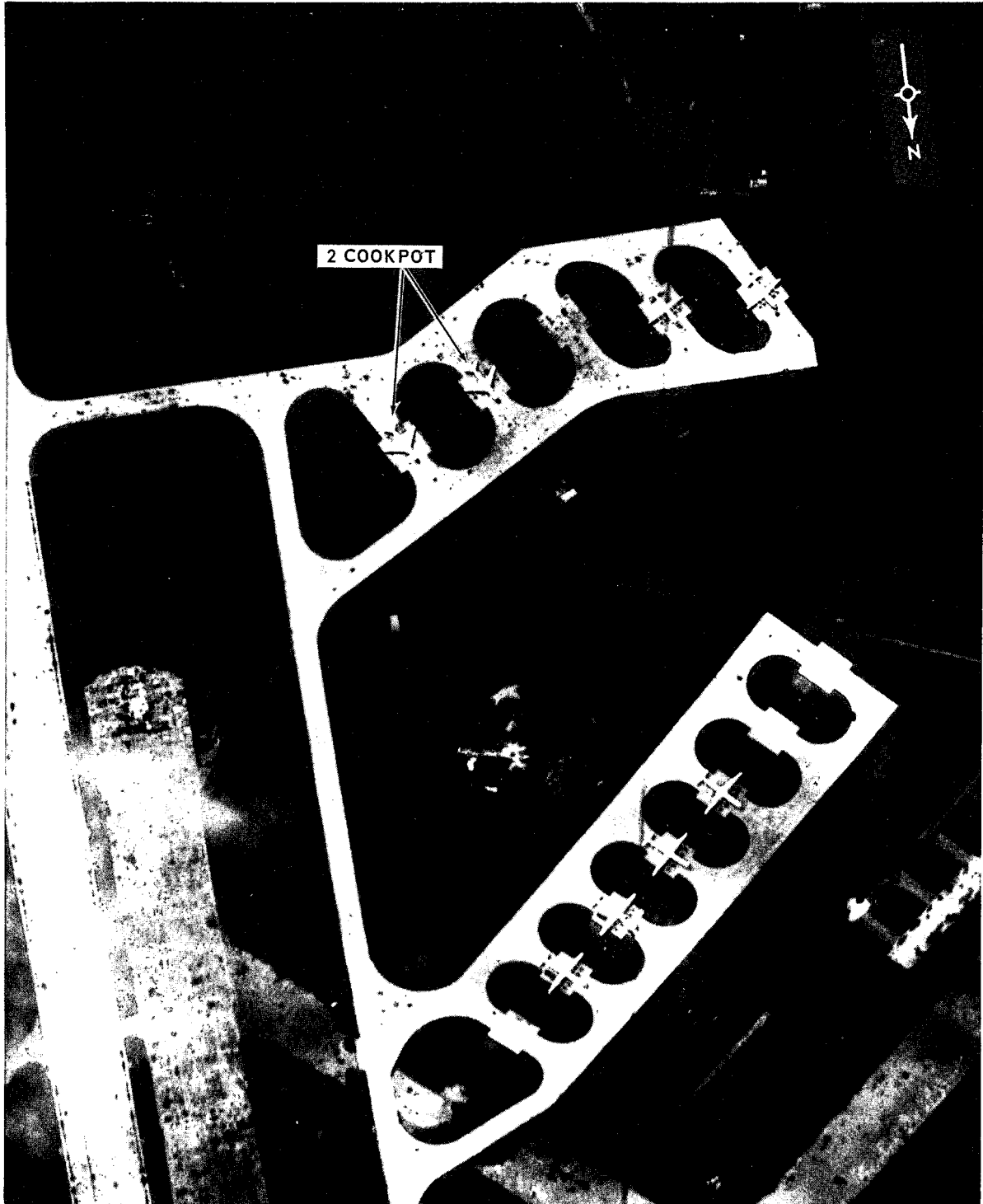
TOP SECRET CHESS RUFF

MISSION 4031, 17-24 AUGUST 1966



ATTACHMENT 11

25X1



PEI-CHING/LAN-TIEN-CHANG AIRFIELD, CHINA (

NPIC L-1711 (8/66)

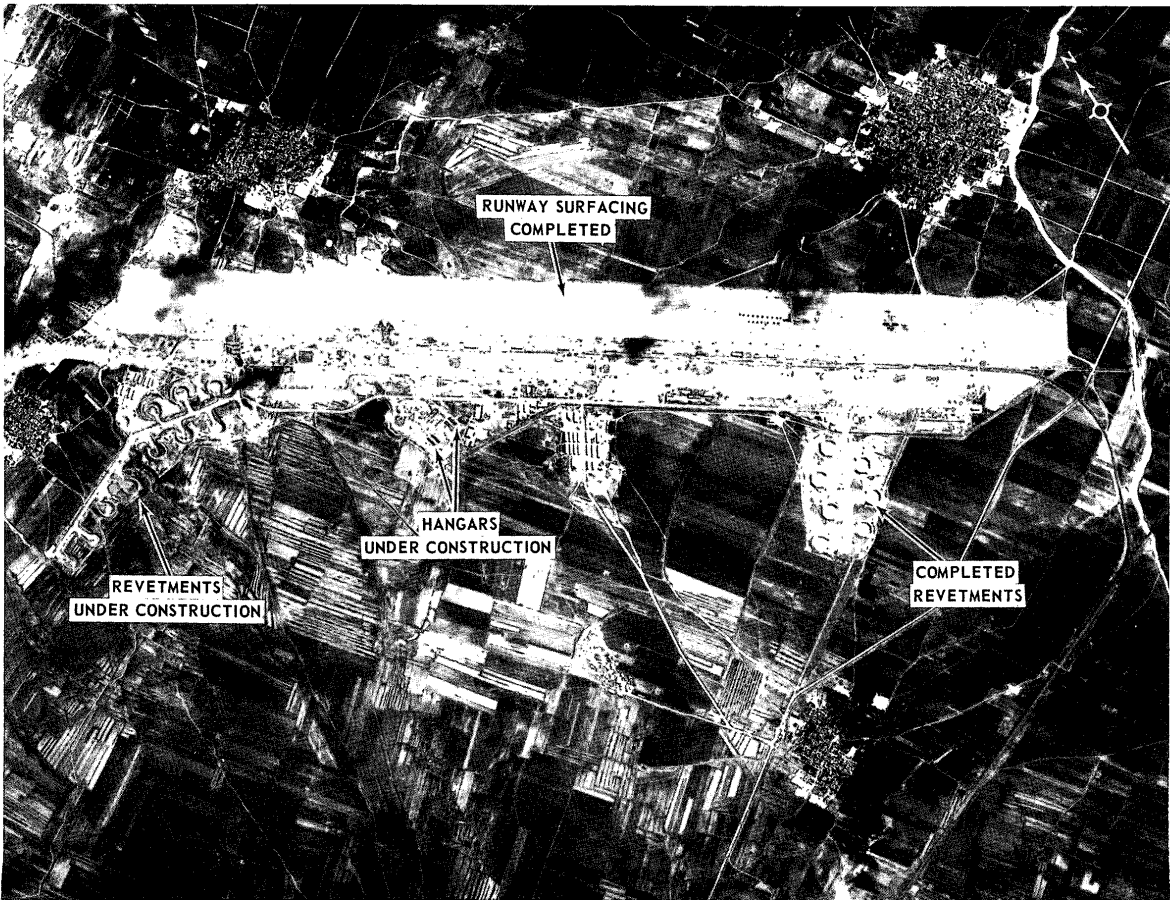


25X1

TOP SECRET CHESS RUFF



25X1



NPIC L-1712 (8/66)

SHA-HO AIRFIELD, CHINA (NO COMOR)

TOP SECRET CHESS RUFF

TOP SECRET CHESS RUFF

MISSION 4031, 17-24 AUGUST 1966

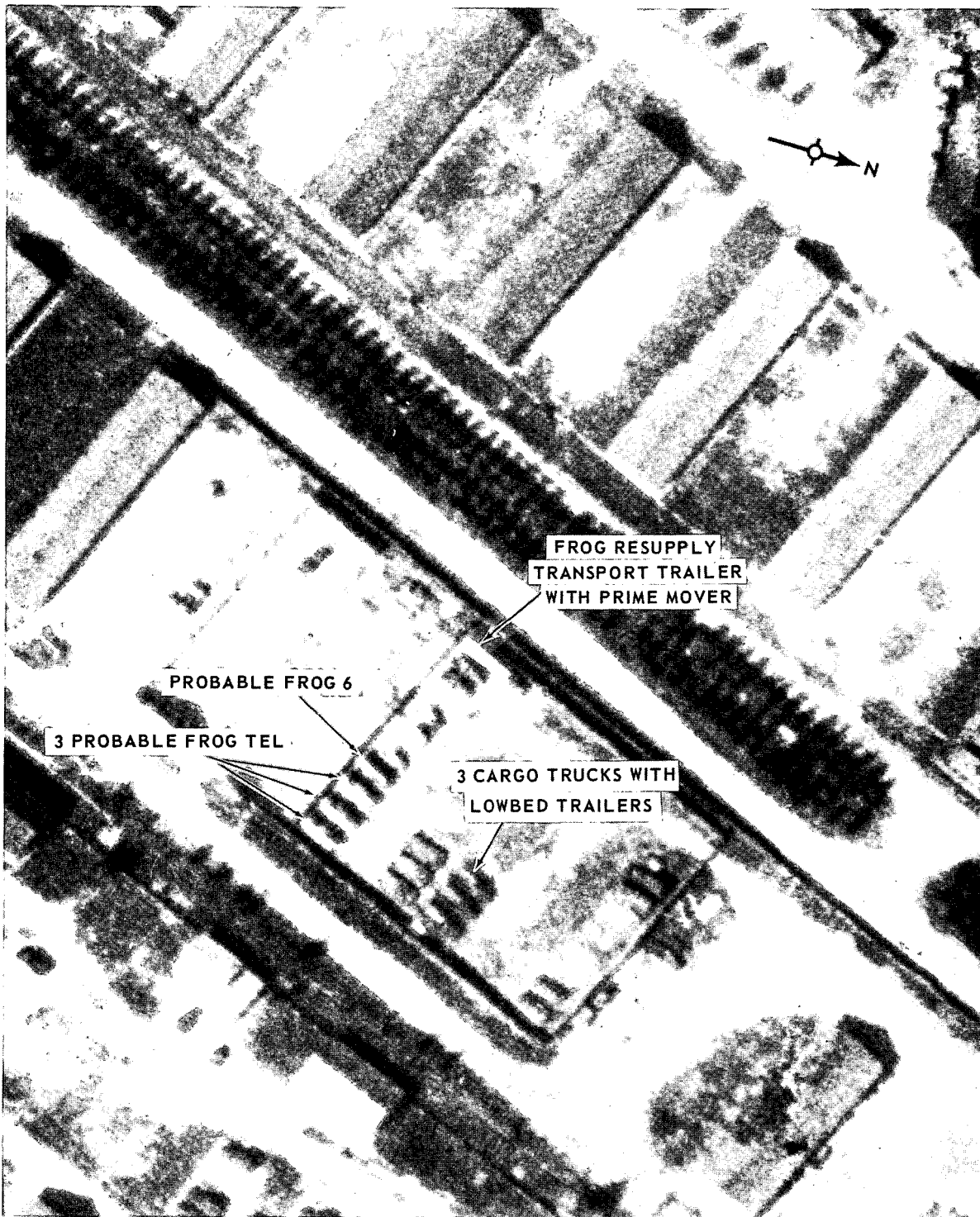
ATTACHMENT 12

TOP SECRET CHESS RUFF

MISSION 4031, 17-24 AUGUST 1966

ATTACHMENT 13

25X1



ARMY BARRACKS EAST AL 2, BOBRUYSK, USSR

NPIC L-1713 (8/66)

25X1

25X1

TOP SECRET CHESS RUFF

TOP SECRET

TOP SECRET