

PHOTOGRAPHIC INTERPRETATION REPORT



MISSION 4031  
17-24 AUGUST 1966

PART I

[Redacted]

AUGUST 1966

COPY 194

64 PAGES

25X

[Redacted]

25X

Declassification Review by NGA/DoD

GROUP 1 EXCLUDED FROM  
AUTOMATIC DOWNGRADING  
AND DECLASSIFICATION

25X1

Approved For Release 2005/11/17 : CIA-RDP03-00140R000100010034-4

Approved For Release 2005/11/17 : CIA-RDP03-00140R000100010034-4

[Redacted]

Approved For Release 2005/11/17 : CIA-RDP03-00140R000100010034-4

**TOP SECRET**

[Redacted]

[Redacted]

**MISSION 4031 17-24 AUGUST 1966**

**TABLE OF CONTENTS**

<b>PREFACE</b>	<b>2</b>
<b>TRACK OF MISSION</b>	<b>4</b>
<b>HIGHLIGHTS</b>	<b>10</b>
<b>MISSILES</b>	<b>12</b>
<b>AIR FACILITIES</b>	<b>33</b>
<b>NUCLEAR ENERGY</b>	<b>38</b>
<b>NAVAL ACTIVITY/PORTS</b>	<b>40</b>
<b>BIOLOGICAL/CHEMICAL WARFARE</b>	<b>41</b>
<b>ELECTRONICS/COMMUNICATIONS</b>	<b>42</b>
<b>MILITARY ACTIVITY</b>	<b>43</b>
<b>COMPLEXES</b>	<b>49</b>
<b>OTHER ACTIVITY</b>	<b>52</b>
<b>ATTACHMENTS</b>	<b>APPENDIX</b>

**TOP SECRET**

[Redacted]

[Redacted]

Approved For Release 2005/11/17 : CIA-RDP03-00140R000100010034-4

MISSION 4031 17-24 AUGUST 1966

# OAK - PART I

## MISSION 4031

### PREFACE

THIS IS THE FIRST OF SEVERAL OAK REPORTS ON MISSION 4031 AND PROVIDES INFORMATION ON THE HIGHEST PRIORITY COMMITTEE ON OVERHEAD RECONNAISSANCE (COMOR) TARGETS OBSERVED ON THE PHOTOGRAPHY. THE REMAINDER OF THE COMOR TARGETS COVERED ON THIS PHOTOGRAPHY WILL BE REPORTED IN A SERIES OF OAK SUPPLEMENTS.

TARGETS ARE ARRANGED IN THE OAK BY SUBJECT AND WITHIN EACH SUBJECT BY COMOR TARGET NUMBER. TARGETS OF OPPORTUNITY OBSERVED DURING THE OAK REPORTING PERIOD ARE LISTED NUMERICALLY UNDER THE APPROPRIATE SUBJECT AFTER THE LISTING OF COMOR TARGETS. LOCATIONS OF TARGETS IN THIS REPORT ARE INDICATED BY THE COUNTRY CODE PRECEDING THE COORDINATES.

SELECTED PHOTOGRAPHIC REFERENCES FOR EACH TARGET OBSERVED AND REPORTED FOLLOW THE DESCRIPTION OF THE TARGET. PASS NUMBERS, SUFFIXED WITH A FOR ASCENDING AND D FOR DESCENDING, ARE LISTED FIRST, FOLLOWED BY FRAMES WHICH ARE INDICATED BY THE FRAME NUMBER WITH AN INDEX NUMBER RUNNING CONSECUTIVELY FROM THE BEGINNING OF EACH PASS -- 4/8 FOR EXAMPLE, MEANS FRAME 4, INDEX 8. UNIVERSAL REFERENCE GRID COORDINATES FOR NEW TARGETS ARE GIVEN IN PARENTHESIS AFTER THE INDEX NUMBER TO WHICH THEY APPLY. THIS GRID IS IDENTIFIED AS UNIVERSAL GRID NO 1, FEB 64. SYMBOLS INDICATING CONDITIONS WHICH AFFECT THE APPEARANCE OF THE TARGET ON THE PHOTOGRAPHY ARE -- C (CLEAR), SC (SCATTERED CLOUD COVER), HC (HEAVY CLOUD COVER), H (HAZE), CS (CLOUD SHADOW), S (SNOW), O (OBLIQUITY), SD (SEMIDARKNESS), D (DARKNESS), GC (GROUND COVER), CF (CAMOUFLAGE), AND GR (GROUND RESOLUTION). COLOR COVERAGE IS DESIGNATED BY THE LETTER C IMMEDIATELY FOLLOWING FRAME NUMBERS.

INTERPRETABILITY OF THE PHOTOGRAPHY IS CATEGORIZED AS G (GOOD), F (FAIR), OR P (POOR). THE EXTENT OF PHOTOGRAPHIC COVERAGE IS DENOTED BY THE SYMBOLS T (TOTAL) OR PT (PARTIAL). THE MODE OF COVERAGE IS INDICATED BY ST (STEREO), PS (PARTIAL STEREO), OR NS (NON-STEREO).

THE INITIAL SCAN OF THE PHOTOGRAPHY IS ACCOMPLISHED IN A SHORT TIME AND PRIOR TO FINAL REFINEMENT OF EPHEMERIS DATA. CONSEQUENTLY, FUTURE DETAILED ANALYSIS MAY RESULT IN MINOR

Approved For Release 2005/11/17 : CIA-RDP03-00140R000100010034-4

25X1

Approved For Release 2005/11/17 : CIA-RDP03-00140R000100010034-4

Approved For Release 2005/11/17 : CIA-RDP03-00140R000100010034-4

TOP SECRET

25  
25

OCTOBER 1966

NATIONAL PHOTOGRAPHIC INTERPRETATION CENTER

ERRATUM FOR NPIC/

OAK, MISSION 4031, 17-24 AUGUST 1966, PART I

DATED AUGUST 1966

25

ON PAGE 36, THE ORDER OF BATTLE COUNT FOR PAPA AIRFIELD,  
HUNGARY: [REDACTED], SHOULD BE CHANGED TO READ --

-- 38 FISHBED AND 3 FAGOT/FRESCO.

-- 5 FISHBED OBSERVED IN CLOUD-FREE AREAS.

25

TOP SECRET

25

K1

25X  
25X

[Redacted]

**TOP SECRET**

[Redacted]

Approved For Release 2005/11/17 : CIA-RDP03-00140R000100010034-4

[Redacted]

MISSION 4031 17-24 AUGUST 1966

ALTERATIONS. MOREOVER, RECIPIENTS ARE CAUTIONED THAT THE IDENTIFICATION OF TARGETS IS BASED PRIMARILY ON PHOTOGRAPHY AND DOES NOT CONSTITUTE A FINISHED INTELLIGENCE JUDGMENT.

[Redacted]

[Redacted]

25X  
25X

25X1

Approved For Release 2005/11/17 : CIA-RDP03-00140R000100010034-4

Next 5 Page(s) In Document Exempt

Approved For Release 2005/11/17 : CIA-RDP03-00140R000100010034-4



## **Highlights**

Approved

TOP SECRET

[Redacted]

For Release 2005/11/17 : CIA-RDP03-00140R000100010034-4

MISSION 4031 17-24 AUGUST 1966

[Redacted]

HIGHLIGHTS

COMMENCING WITH THIS OAK, GRID COORDINATES WILL BE OMITTED FROM THE PHOTO REFERENCE LINE ON KH-7 MISSIONS, EXCEPT ON NEW TARGETS.

AS A RESULT OF A STEREO MIRROR MALFUNCTION AFTER [Redacted] ALL SUCCEEDING COVERAGE WAS IN A NON-STEREO MODE.

1. MISSILE ACTIVITY

PARTIAL COVERAGE OF 15 OF THE 25 KNOWN DEPLOYED ICBM COMPLEXES, INCLUDING DOMBAROVSKIY, DROVYANAYA, IMENI GASTELLO, ITATKA, OLOVYANNAYA, TATISHCHEVO, KARTALY, KOSTROMA, OMSK, SVOBODNY, UZHUR, YOSHKAR-OLA, YURYA, PLESETSK, AND YEDROVO, REVEALED 19 NEW SINGLE SILO SITES. ONE TYPE IIIC SITE IS AT DOMBAROVSKIY, 2 IIID AT KOSTROMA, 1 IIID AT OLOVYANNAYA, 4 IIID AT SVOBODNY, AND 11 IIID AT TATISHCHEVO.

THE WESTERN END OF THE TYURATAM MISSILE TEST CENTER IS COVERED BY CLEAR, STEREO PHOTOGRAPHY OF GOOD INTERPRETABILITY. LAUNCH COMPLEXES F AND G AND LAUNCH GROUPS K, L, M, AND N ARE COVERED.

AT THE KAPUSTIN YAR/VLADIMIROVKA MISSILE TEST CENTER, THE SSM FACILITIES AND THE AKHTUBINSK/VLADIMIROVKA AIRFIELD ARE COVERED BY CLEAR, MONO PHOTOGRAPHY OF GOOD INTERPRETABILITY. THE SHUANG-CHENG-TZU MISSILE TEST CENTER IS NOT COVERED.

2. SA-2 MISSILE ACTIVITY, NORTH VIETNAM

MISSION 4031 COVERED NORTH VIETNAM WITH 12 FRAMES OF PHOTOGRAPHY, 50 PERCENT OF WHICH IS CLOUD COVERED. EIGHT OF THE 124 KNOWN SAM SITES WERE OBSERVED. FIVE WERE UNOCCUPIED AND OCCUPANCY OF 3 WAS UNDETERMINED DUE TO WEATHER. NO NEW SAM INSTALLATIONS WERE IDENTIFIED ON THIS MISSION.

3. SARY-SHAGAN LAUNCH COMPLEX B (ZONE B) [Redacted]

A GALOSH CANISTER IS IN THE PASS-THROUGH ERECTOR AT LAUNCH POSITION B-4. A PROBABLE GALOSH CANISTER IS ERECTED AT A LOW ANGLE OF ELEVATION IN THE ERECTOR AT LAUNCH POSITION C-1. AT LAUNCH POSITION C-2, ERECTOR ARMS ARE NOW OBSERVED.

4. PEI-CHING MSL DEV & PROD CTR CHANG-HSIN-TIEN [Redacted]

[Redacted]

TOP SECRET

[Redacted]

X1

Approved For Release

TOP SECRET CIA-RDP03-00140R000100010034-4

25X  
25X

MISSION 4031 17-24 AUGUST 1966

THE TEST FACILITY SHOWS CONTINUING ACTIVITY. CONTAMINANT STAINS AND EROSION AT TEST STANDS 1 AND 2 ARE INDICATIVE OF TESTING. THE SUMP FOR THE LARGEST TEST STAND (3) IS FILLED WITH WATER TO A DEPTH OF AT LEAST 10 FT, WHICH COULD BE INDICATIVE OF A FAIRLY RECENT TEST FIRING.

5. KUANG-CHOU SHIPYARD TUNG-LANG (NAVAL BONUS)

TWO NEW CLASS DE (TENTATIVELY DESIGNATED CHIANGNAN CLASS) ARE OBSERVED. ONE APPARENTLY IS OUTFITTING AT THE MAIN QUAY AND THE SECOND IS IN AN ADVANCED STAGE OF CONSTRUCTION ON THE BUILDING WAY.

6. CHAADAYEVKA SENSITIVE OPERATIONS COMPLEX

25X

THE BUNKERS AT THE COMPLEX DO NOT APPEAR TO BE INTENDED FOR STORAGE. IT APPEARS THAT AT LEAST 4 BUNKERS (3, 4, 5, AND 7) ARE PERSONNEL BUNKERS. THIS INSTALLATION IS NO LONGER CONSIDERED A SENSITIVE OPERATIONS COMPLEX, NOR IS IT ASSOCIATED WITH NUCLEAR WEAPONS STORAGE.

STATUS OF COMOR TARGET READOUT

THIS OAK REPORTS ON 159 COMOR TARGETS.

25X  
25X

**Missiles**

MISSION 4031 17-24 AUGUST 1966

MISSILES

VERKHNYAYA SALDA ICBM COMPLEX

UR 5802N 06024E

THE COMPLEX IS NOT COVERED. NO NEW MISSILE FACILITIES OBSERVED IN THE CLOUD-FREE PORTIONS OF THE SEARCH AREA.

[Redacted]

YOSHKAR-OLA ICBM COMPLEX

UR 5633N 04801E

NO NEW MISSILE FACILITIES OBSERVED WITHIN THE CLOUD-FREE PORTIONS OF THE SEARCH AREA.

[Redacted]

YOSHKAR-OLA ICBM LAUNCH SITE 2

UR 5634N 04817E

NO MISSILES, MISSILE-RELATED EQUIPMENT, NEW CONSTRUCTION, CHANGES IN FACILITIES, OR PREVIOUSLY UNREPORTED FEATURES OBSERVED.

[Redacted]

YOSHKAR-OLA ICBM LAUNCH SITE 3

UR 5631N 04827E

NO MISSILES, MISSILE-RELATED EQUIPMENT, NEW CONSTRUCTION, CHANGES IN FACILITIES, OR PREVIOUSLY UNREPORTED FEATURES OBSERVED.

[Redacted]

YOSHKAR-OLA ICBM LAUNCH SITE 4

UR 5630N 04819E

TWO MISSILES, ONE IN FRONT OF EACH OF THE READY BUILDINGS, ARE OBSERVED.

NO NEW CONSTRUCTION, CHANGES IN FACILITIES, OR PREVIOUSLY UNREPORTED FEATURES OBSERVED.

[Redacted]

MISSION 4031 17-24 AUGUST 1966

25X  
25X  
25X

YOSHKAR-OLA ICBM LAUNCH SITE 5

UR 5633N 04812E

ONE MISSILE IS IN FRONT OF THE RIGHT READY BUILDING, BEHIND THE LEFT PAD.

NO NEW CONSTRUCTION, CHANGES IN FACILITIES, OR PREVIOUSLY UNREPORTED FEATURES OBSERVED.

[Redacted]

YOSHKAR-OLA ICBM LAUNCH SITE 6

UR 5636N 04828E

NO MISSILES, MISSILE-RELATED EQUIPMENT, NEW CONSTRUCTION, CHANGES IN FACILITIES, OR PREVIOUSLY UNREPORTED FEATURES OBSERVED.

[Redacted]

SVOBODNYY ICBM COMPLEX

UR 5146N 12806E

FOUR TYPE IIID SITES, ALL IN A MID-STAGE OF CONSTRUCTION, ARE NEWLY IDENTIFIED.

SITE 30 IS 18 NM SSW OF THE COMPLEX SUPPORT FACILITY AT 51-31N 127-51E.

SITE 31 IS 7 NM SOUTH OF THE COMPLEX SUPPORT FACILITY AT 51-39-30N 128-08-30E.

SITE 32 IS 3 NM SSW OF THE COMPLEX SUPPORT FACILITY AT 51-43-40N 128-04-40E.

SITE 33 IS 4 NM WEST OF THE COMPLEX SUPPORT FACILITY AT 51-46-30N 128-00-00E.

THE TRANSFER POINT HAS BEEN EXPANDED TO INCLUDE 4 ARCH-ROOFED BUILDINGS ON THE SW SIDE, A SECOND ACCESS ROAD, AND ADDITIONAL BUILDUP ON THE SOUTHERN END.

NO OTHER NEW MISSILE FACILITIES OBSERVED WITHIN LIMITS OF PHOTOGRAPHY.

[Redacted]

25X  
25X

TOP SECRET

Approved For Release 2005/11/17 : CIA-RDP03-00140R000100010034-4

MISSION 4031 17-24 AUGUST 1966

K1

[Redacted]

SVOBODNY ICBM LAUNCH SITE 3

UR 5154N 12809E

IDENTIFICATION ONLY.

[Redacted]

K1

SVOBODNY ICBM LAUNCH SITE 4

UR 5158N 12806E

IDENTIFICATION ONLY.

[Redacted]

K1

SVOBODNY ICBM LAUNCH SITE 6

UR 5143N 12759E

A POSSIBLE MISSILE IS IN FRONT OF THE LEFT MISSILE READY BUILDING. AN UNIDENTIFIED LINEAR OBJECT IS ON THE LEFT PAD IN FRONT OF THE ERECTOR.

NO NEW CONSTRUCTION, CHANGES IN FACILITIES, OR PREVIOUSLY UNREPORTED FEATURES OBSERVED.

[Redacted]

K1

SVOBODNY ICBM LAUNCH SITE 7

UR 5137N 12757E

TWO LONG OBJECTS ARE PARKED BETWEEN THE MISSILE READY BUILDINGS. TWO UNIDENTIFIED OBJECTS ARE IN THE ENTRANCE OF ONE OF THE MISSILE READY BUILDINGS.

NO NEW CONSTRUCTION, CHANGES IN FACILITIES, OR PREVIOUSLY UNREPORTED FEATURES OBSERVED.

[Redacted]

K1

SVOBODNY ICBM LAUNCH SITE 8

UR 5202N 12805E

IDENTIFICATION ONLY.

[Redacted]

K1

Approved For Release 2005/11/17 : CIA-RDP03-00140R000100010034-4

TOP SECRET

[Redacted]

25X  
25X  
25X

**TOP SECRET**

Approved For Release 2005/11/17 : CIA-RDP03-00140R000100010034-4

MISSION 4031 17-24 AUGUST 1966

SVOBODNY ICBM LAUNCH SITE 9

UR 5127N 12801E

SITE IS NOW IN A MID-STAGE OF CONSTRUCTION.

NO MISSILES, MISSILE-RELATED EQUIPMENT, NEW CONSTRUCTION, CHANGES IN FACILITIES, OR PREVIOUSLY UNREPORTED FEATURES OBSERVED.

[Redacted]

SVOBODNY ICBM LAUNCH SITE 10

UR 5147N 12809E

SITE REMAINS IN A MID-STAGE OF CONSTRUCTION.

NO MISSILES, MISSILE-RELATED EQUIPMENT, NEW CONSTRUCTION, CHANGES IN FACILITIES, OR PREVIOUSLY UNREPORTED FEATURES OBSERVED.

[Redacted]

SVOBODNY ICBM LAUNCH SITE 11

UR 5153N 12810E

IDENTIFICATION ONLY.

[Redacted]

SVOBODNY ICBM LAUNCH SITE 12

UR 5148N 12803E

SITE REMAINS IN A MID-STAGE OF CONSTRUCTION.

NO MISSILES, MISSILE-RELATED EQUIPMENT, NEW CONSTRUCTION, CHANGES IN FACILITIES, OR PREVIOUSLY UNREPORTED FEATURES OBSERVED.

[Redacted]

SVOBODNY ICBM LAUNCH SITE 14

UR 5150N 12808E

IDENTIFICATION ONLY.

[Redacted]

**TOP SECRET**

25X  
25X



MISSION 4031 17-24 AUGUST 1966

25X  
25X  
25X

X1 [ ] SVOBODNYY ICBM LAUNCH SITE 16

UR 5151N 12802E

IDENTIFICATION ONLY.

X1 [ ]

SVOBODNYY ICBM LAUNCH SITE 17

UR 5154N 12759E

IDENTIFICATION ONLY.

X1 [ ]

SVOBODNYY ICBM LAUNCH SITE 18

UR 5143N 12756E

IDENTIFICATION ONLY.

X1 [ ]

SVOBODNYY ICBM LAUNCH SITE 21

UR 5157N 12759E

IDENTIFICATION ONLY.

X1 [ ]

SVOBODNYY ICBM LAUNCH SITE 22

UR 5159N 12802E

IDENTIFICATION ONLY.

X1 [ ]

SVOBODNYY ICBM LAUNCH SITE 24

UR 5130N 12758E

SITE IS NOW IN A MID-STAGE OF CONSTRUCTION.

NO MISSILES, MISSILE-RELATED EQUIPMENT, NEW CONSTRUCTION, CHANGES IN FACILITIES, OR PREVIOUSLY UNREPORTED FEATURES OBSERVED.

X1 [ ]

25X

25X

MISSION 4031 17-24 AUGUST 1966

25X  
25X  
25X

SVOBODNY ICBM LAUNCH SITE 25

UR 5127N 12756E

SITE IS NOW CONFIRMED AND IS IN A MID-STAGE OF CONSTRUCTION. NUMEROUS BUILDINGS AND BUILDING FOUNDATIONS INDICATE THIS IS A POSSIBLE CONTROL SITE.

[Redacted]

SVOBODNY ICBM POSS LAUNCH SITE 28

UR 5123N 12802E

THIS IS NOT CONSIDERED TO BE A VALID SITE AND IS DROPPED FROM THE NPIC LISTINGS.

[Redacted]

[Large Redacted Block]

ITATKA ICBM COMPLEX

UR 5650N 08535E

NO NEW MISSILE FACILITIES OBSERVED WITHIN THE CLOUD-FREE PORTIONS OF THE SEARCH AREA.

[Redacted]

ITATKA ICBM LAUNCH SITE 1

UR 5658N 08531E

NO MISSILES, MISSILE-RELATED EQUIPMENT, NEW CONSTRUCTION, CHANGES IN FACILITIES, OR PREVIOUSLY UNREPORTED FEATURES OBSERVED.

[Redacted]

ITATKA ICBM LAUNCH SITE 2

UR 5700N 08539E

NO MISSILES, MISSILE-RELATED EQUIPMENT, NEW CONSTRUCTION, CHANGES IN FACILITIES, OR PREVIOUSLY UNREPORTED FEATURES OBSERVED.

25X  
25X

Approved For Release 2005/11/11 : CIA-RDP03-00140R000100010034-4

TOP SECRET

MISSION 4031 17-24 AUGUST 1966

K1

[Redacted]

ITATKA ICBM LAUNCH SITE 3

UR 5654N 08539E

NO MISSILES, MISSILE-RELATED EQUIPMENT, NEW CONSTRUCTION, CHANGES IN FACILITIES, OR PREVIOUSLY UNREPORTED FEATURES OBSERVED.

[Redacted]

K1

ITATKA ICBM RAIL-TO-ROAD TRANSFER POINT

UR 5651N 08535E

NO MISSILES, MISSILE-RELATED EQUIPMENT, NEW CONSTRUCTION, CHANGES IN FACILITIES, OR PREVIOUSLY UNREPORTED FEATURES OBSERVED.

[Redacted]

K1

OMSK ICBM COMPLEX

UR 5504N 07331E

NO NEW MISSILE FACILITIES OBSERVED WITHIN THE CLOUD-FREE PORTIONS OF THE SEARCH AREA.

[Redacted]

K1

OMSK ICBM LAUNCH SITE 1

UR 5509N 07337E

TEN VEHICLES/PIECES OF EQUIPMENT ARE IN THE [Redacted] THE LAUNCH SITE CAN BE IDENTIFIED ONLY.

[Redacted]

K1

PERM ICBM COMPLEX

UR 5742N 05619E

NO NEW MISSILE FACILITIES OBSERVED WITHIN CLOUD-FREE PORTIONS OF THE SEARCH AREA.

[Redacted]

K1

Approved For Release 2005/11/11 : CIA-RDP03-00140R000100010034-4

TOP SECRET

25X  
25X  
25X

MISSION 4031 17-24 AUGUST 1966

TEYKOVO ICBM COMPLEX

UR 5652N 04034E

COMPLEX IS NOT COVERED. NO NEW MISSILE FACILITIES OBSERVED IN THE CLOUD-FREE PORTIONS OF THE SEARCH AREA.

[REDACTED]

YEDROVO ICBM COMPLEX

UR 5751N 03340E

NO NEW MISSILE FACILITIES OBSERVED IN CENTRAL 5 PERCENT OF SEARCH AREA.

[REDACTED]

YEDROVO ICBM LAUNCH SITE 2

UR 5748N 03335E

IDENTIFICATION ONLY.

[REDACTED]

YEDROVO ICBM LAUNCH SITE 3

UR 5752N 03327E

IDENTIFICATION ONLY.

[REDACTED]

YEDROVO ICBM LAUNCH SITE 4

UR 5748N 03328E

IDENTIFICATION ONLY.

[REDACTED]

YEDROVO ICBM LAUNCH SITE 10

UR 5748N 03331E

IDENTIFICATION ONLY.

[REDACTED]

YEDROVO ICBM LAUNCH SITE 11

UR 5751N 03336E

NO MISSILES OR MISSILE-RELATED EQUIPMENT OBSERVED. AN L-SHAPED ELECTRONICS FACILITY IS UNDER CONSTRUCTION AT THIS CONTROL SITE.

25X

25X

TOP SECRET

25X

25X

MISSION 4031 17-24 AUGUST 1966

[Redacted]

25X

YEDROVO ICBM LAUNCH SITE 12

UR 5748N 03340E

IDENTIFICATION ONLY.

[Redacted]

YEDROVO ICBM LAUNCH SITE 13

UR 5754N 03328E

IDENTIFICATION ONLY.

[Redacted]

YEDROVO ICBM LAUNCH SITE 14

UR 5750N 03330E

IDENTIFICATION ONLY.

[Redacted]

YEDROVO ICBM PROB LAUNCH SITE 17

UR 5753N 03344E

IDENTIFICATION ONLY.

[Redacted]

YEDROVO ICBM PROB LAUNCH SITE 18

UR 5756N 03346E

THIS IS NO LONGER CONSIDERED TO BE A LAUNCH SITE AND IS DROPPED FROM NPIC LISTING.

[Redacted]

[Large Redacted Block]

TOP SECRET

25X

25X

MISSION 4031 17-24 AUGUST 1966

25X  
25X  
25X

UZHUR ICBM COMPLEX

UR 5517N 08949E

NO NEW MISSILE FACILITIES OBSERVED WITHIN THE CLOUD-FREE PORTIONS OF THE SEARCH AREA.

[Redacted]

UZHUR ICBM LAUNCH SITE 1

UR 5520N 08943E

THE AREA AROUND THE SILO HAS A MOTTLED APPEARANCE. NUMEROUS SMALL OBJECTS OR PILES OF MATERIAL ARE ON THE LOOP ROAD.

NO MISSILES, MISSILE-RELATED EQUIPMENT, NEW CONSTRUCTION, CHANGES IN FACILITIES, OR PREVIOUSLY UNREPORTED FEATURES OBSERVED.

[Redacted]

UZHUR ICBM LAUNCH SITE 2

UR 5518N 08938E

NUMEROUS OBJECTS OR PILES OF MATERIAL ARE ON THE LOOP ROAD.

NO MISSILES, MISSILE-RELATED EQUIPMENT, NEW CONSTRUCTION, CHANGES IN FACILITIES, OR PREVIOUSLY UNREPORTED FEATURES OBSERVED.

[Redacted]

UZHUR ICBM LAUNCH SITE 6

UR 5525N 08939E

NUMEROUS SMALL OBJECTS OR PILES OF MATERIAL IN GROUPS OF 3 ARE ON THE LOOP ROAD. THE SITE SUPPORT FACILITY IS BEING REMOVED. NO MISSILES, MISSILE-RELATED EQUIPMENT, OR NEW CONSTRUCTION OBSERVED.

[Redacted]

UZHUR ICBM LAUNCH SITE 12

UR 5507N 08937E

IDENTIFICATION ONLY.

[Redacted]

25X

25X

MISSION 4031 17-24 AUGUST 1966

25X  
25X  
25X

UZHUR ICBM LAUNCH SITE 13

UR 5512N 08941E

THE LAUNCH SITE REMAINS IN A LATE STAGE OF CONSTRUCTION. NO NUCLEAR STORAGE OBSERVED.

NO MISSILES, MISSILE-RELATED EQUIPMENT, NEW CONSTRUCTION, CHANGES IN FACILITIES, OR PREVIOUSLY UNREPORTED FEATURES OBSERVED.

[Redacted]

UZHUR ICBM LAUNCH SITE 18

UR 5457N 08940E

IDENTIFICATION ONLY.

[Redacted]

UZHUR ICBM LAUNCH SITE 19

UR 5516N 08944E

THE LAUNCH SITE REMAINS IN A MID-STAGE OF CONSTRUCTION.

NO MISSILES, MISSILE-RELATED EQUIPMENT, NEW CONSTRUCTION, CHANGES IN FACILITIES, OR PREVIOUSLY UNREPORTED FEATURES OBSERVED.

[Redacted]

UZHUR ICBM COMPLEX SUPPORT FACILITY

UR 5517N 08949E

NO MISSILES, MISSILE-RELATED EQUIPMENT, NEW CONSTRUCTION, CHANGES IN FACILITIES, OR PREVIOUSLY UNREPORTED FEATURES OBSERVED.

[Redacted]

UZHUR ICBM RAIL-TO-ROAD TRANSFER POINT

UR 5516N 08944E

ONE PROBABLE MISSILE ON A TRANSPORTER IS IN FRONT OF THE CANTED BUILDING AT THE SOUTHERN CORNER OF THE TRANSFER POINT. APPROXIMATELY 30 VEHICLES ARE WITHIN THE TRANSFER POINT.

NO NEW CONSTRUCTION, CHANGES IN FACILITIES, OR PREVIOUSLY UNREPORTED FEATURES OBSERVED.

25X  
25X

TOP SECRET

MISSION 4031 17-24 AUGUST 1966

25X  
25X

OLOVYANNAYA ICBM COMPLEX

UR 5049N 11550E

A TYPE IIID LAUNCH SITE, DESIGNATED SITE 79, IS NEWLY IDENTIFIED APPROXIMATELY 27 NM NNE OF THE COMPLEX SUPPORT FACILITY AT 51-16N 115-59E. IT IS IN A MID-STAGE OF CONSTRUCTION WITH A SILO LINER ERECT IN THE CORING. A CRANE IS ON THE SOUTH LIP OF THE EXCAVATION. NO OTHER NEW MISSILE FACILITIES OBSERVED IN CLOUD-FREE PORTIONS OF AREA COVERED BY PHOTOGRAPHY.

DOMBAROVSKIY ICBM COMPLEX

UR 5101N 05950E

LAUNCH SITE 23, LOCATED APPROXIMATELY 19 NM SE OF THE COMPLEX SUPPORT FACILITY, AT 50-45N 060-04E CAN NOW BE CONFIRMED. IT CONSISTS OF A LAUNCH SITE IN A MID-STAGE OF CONSTRUCTION AND A SITE SUPPORT FACILITY WITH 8 BUILDINGS. A CRANE IS ON THE NW SIDE OF THE SILO.

NO OTHER NEW MISSILE ACTIVITY OBSERVED IN AREA COVERED BY PHOTOGRAPHY.

DOMBAROVSKIY ICBM LAUNCH SITE 21

UR 5051N 05959E

THE LAUNCH SITE IS NOW IN A MID-STAGE OF CONSTRUCTION. CONSTRUCTION CONTINUES ON THE POSSIBLE CONTROL BUNKER. THE SITE SUPPORT FACILITY NOW CONSISTS OF 14 BUILDINGS. NO MISSILE OR MISSILE-RELATED EQUIPMENT OBSERVED.

DOMBAROVSKIY ICBM LAUNCH SITE 25

UR 5046N 06011E

THE LAUNCH SITE CAN NOW BE CONFIRMED AND IS IN A MID-STAGE OF CONSTRUCTION. A CRANE IS SOUTH OF THE

TOP SECRET

25X

25X



TOP SECRET

MISSION 4031 17-24 AUGUST 1966

SILO. THE SITE SUPPORT FACILITY CONSISTS OF 9 COMPLETE BUILDINGS AND 3 BUILDINGS UNDER CONSTRUCTION. NO MISSILES OBSERVED.

DOMBAROVSKIY ICBM LAUNCH SITE 26

UR 5052N 06010E

THE LAUNCH SITE CAN NOW BE CONFIRMED AND IS IN A MID-STAGE OF CONSTRUCTION. THE SITE SUPPORT FACILITY CONSISTS OF 7 COMPLETE BUILDINGS AND 4 BUILDINGS UNDER CONSTRUCTION. NO MISSILES, MISSILE-RELATED EQUIPMENT, OR ADDITIONAL NEW CONSTRUCTION OBSERVED.

KARTALY ICBM COMPLEX

UR 5302N 06034E

NO NEW MISSILE FACILITIES OBSERVED IN CLOUD-FREE PORTIONS OF SEARCH AREA.

KARTALY ICBM LAUNCH SITE 2

UR 5256N 06031E

NO MISSILES, MISSILE-RELATED EQUIPMENT, NEW CONSTRUCTION, CHANGES IN FACILITIES, OR PREVIOUSLY UNREPORTED FEATURES OBSERVED.

KARTALY ICBM LAUNCH SITE 14

UR 5300N 06046E

SLIM VERTICAL OBJECT IS ADJACENT TO THE SILO EXCAVATION. SITE REMAINS IN A MID-STAGE OF CONSTRUCTION.

NO MISSILES, MISSILE-RELATED EQUIPMENT, NEW CONSTRUCTION, CHANGES IN FACILITIES, OR PREVIOUSLY UNREPORTED FEATURES OBSERVED.

TOP SECRET

X1

Approved For Release

~~TOP SECRET~~

CIA-RDP03-00140R000100010034-4

100010034-4

MISSION 4031 17-24 AUGUST 1966

KARTALY ICBM LAUNCH SITE 15

UR 5257N 06039E

SITE REMAINS IN A MID-STAGE OF CONSTRUCTION.

NO MISSILES, MISSILE-RELATED EQUIPMENT, NEW CONSTRUCTION, CHANGES IN FACILITIES, OR PREVIOUSLY UNREPORTED FEATURES OBSERVED.

[Redacted]

KARTALY ICBM LAUNCH SITE 18

UR 5251N 06038E

SITE REMAINS IN A MID-STAGE OF CONSTRUCTION.

NO MISSILES, MISSILE-RELATED EQUIPMENT, NEW CONSTRUCTION, CHANGES IN FACILITIES, OR PREVIOUSLY UNREPORTED FEATURES OBSERVED.

[Redacted]

KARTALY ICBM LAUNCH SITE 19

UR 5253N 06046E

SITE REMAINS IN A MID-STAGE OF CONSTRUCTION.

NO MISSILES, MISSILE-RELATED EQUIPMENT, NEW CONSTRUCTION, CHANGES IN FACILITIES, OR PREVIOUSLY UNREPORTED FEATURES OBSERVED.

[Redacted]

KARTALY ICBM LAUNCH SITE 20

UR 5257N 06055E

SITE REMAINS IN A MID-STAGE OF CONSTRUCTION.

NO MISSILES, MISSILE-RELATED EQUIPMENT, NEW CONSTRUCTION, CHANGES IN FACILITIES, OR PREVIOUSLY UNREPORTED FEATURES OBSERVED.

[Redacted]

KARTALY ICBM LAUNCH SITE 21

UR 5251N 06055E

SITE REMAINS IN A MID-STAGE OF CONSTRUCTION.

[Redacted]

MISSION 4031 17-24 AUGUST 1966

KARTALY ICBM COMPLEX SUPPORT FACILITY UR 5302N 06034E

NO MISSILES, MISSILE-RELATED EQUIPMENT, NEW CONSTRUCTION, CHANGES IN FACILITIES, OR PREVIOUSLY UNREPORTED FEATURES OBSERVED.

KARTALY ICBM RAIL-TO-ROAD TRANSFER POINT UR 5301N 06034E

NO MISSILES, MISSILE-RELATED EQUIPMENT, NEW CONSTRUCTION, CHANGES IN FACILITIES, OR PREVIOUSLY UNREPORTED FEATURES OBSERVED.

SARY-SHAGAN LAUNCH COMPLEX B (ZONE B) UR 4559N 07231E

FACILITY A -- A POSSIBLE MOBILE ERECTOR/Crane REMAINS PARKED IN SE CORNER OF AREA. NO CHANGE IN FACILITIES.

FACILITY B -- NO CHANGE IN FACILITIES. A PIECE OF UNIDENTIFIED EQUIPMENT IS PARKED ON EAST EDGE OF LAUNCH PAD B-2.

A GALOSH CANISTER IS IN THE PASS-THROUGH ERECTOR AT LAUNCH POSITION B-4. ONE END OF THE CANISTER IS FLUSH WITH THE EAST SIDE OF THE ERECTOR. IT EXTENDS THROUGH THE ERECTOR AND A PRIME MOVER IS ATTACHED TO THE WEST END OF THE CANISTER. OVERALL LENGTH OF CANISTER AND PRIME MOVER IS [ ] AND WIDTH OF CANISTER IS [ ]

FACILITY C (TRIAD AREA) -- A PROBABLE GALOSH CANISTER IS ERECTED AT A LOW ANGLE OF ELEVATION (PROBABLY LESS THAN 30 DEGREES) IN THE ERECTOR AT LAUNCH POSITION C-1. OVERALL LENGTH IS [ ] THE RAISED END IS ON AN AZIMUTH OF 275 DEGREES.

AT LAUNCH POSITION C-2, ERECTOR ARMS ARE NOW OBSERVED BUT THE LAUNCH PAD DOES NOT APPEAR COMPLETE. THE ERECTOR ARMS ARE SIMILAR TO THOSE AT LAUNCH POSITIONS B-3, B-4, AND C-1 AND ARE PERPENDICULAR TO THE SERVICE ROAD PASSING THROUGH THE POSITION. EACH ERECTOR ARM IS [ ]

AT TRIAD BUILDING A, THE LARGE CRANE IS NOT PRESENT. THE 2 SMALL CRANES WHICH SERVED TRIAD BUILDINGS B AND C HAVE BEEN DISMANTLED.

TOP SECRET

25X  
25X

MISSION 4031 17-24 AUGUST 1966

THE LARGEST 2 OF THE 3 SUPPORT-TYPE BUILDINGS LOCATED SOUTH OF THE TRIAD SECURITY FENCE ARE NOW 80 PERCENT DISMANTLED.

FOUR OF THE POSITIONS AT THE SA-2 SAM SITE ARE OCCUPIED BY LAUNCHERS. NO SIGNIFICANT CHANGES ARE OBSERVED IN THE SUPPORT AREA OR AT THE 4 SMALL INSTRUMENTATION SITES AROUND LAUNCH COMPLEX B.

(SEE ATTACHMENT)

[REDACTED]

25X

TAI-YUAN SOLID PROPELLANT TEST FACILITY CH 3759N 11233E

NO MISSILES, MISSILE-RELATED EQUIPMENT, NEW CONSTRUCTION, CHANGES IN FACILITIES, OR PREVIOUSLY UNREPORTED FEATURES OBSERVED.

[REDACTED]

PEI-CHING MSL DEV & PROD CTR CHANG-HSIN-TI CH 3950N 11608E

THE CENTER IS 80 PERCENT CLOUD FREE. THE TEST FACILITY SHOWS CONTINUING ACTIVITY. CONTAMINANT STAINS AND EROSION AT TEST STANDS 1 AND 2 ARE INDICATIVE OF TESTING. THE SUMP FOR THE LARGEST TEST STAND (3) IS FILLED WITH WATER TO A DEPTH OF AT LEAST 10 FT, WHICH COULD BE INDICATIVE OF A FAIRLY RECENT TEST FIRING. A CYLINDRICAL PROBABLE TANK IS NEARBY. THREE RAIL CARS ARE ON SPURS IMMEDIATELY BEHIND THE LARGE ASSEMBLY/CHECKOUT BUILDING FOR STAND 3. SEVERAL OTHER RAIL CARS ARE VISIBLE AT THE FACILITY. THE POSSIBLE PROPELLANT PRODUCTION AREA IS NEARING COMPLETION. THE HORIZONTAL TEST SITE SHOWS NO CHANGE. THE INDUSTRIAL/R&D AREA APPEARS ESSENTIALLY COMPLETE. THE CONTINUOUS FLOW, CLOSED CIRCUIT WIND TUNNEL IS PROBABLY

[REDACTED]

25X

TAPERED CYLINDRICAL OBJECT [REDACTED] IN DIAMETER AT THE SMALL END AND [REDACTED] IN DIAMETER AT THE LARGER END HAS BEEN MOVED FROM THE OPEN STORAGE YARD NEAR THE INDUSTRIAL BUILDINGS SINCE [REDACTED] AND IS NOW POSITIONED IN THE R&D SECTION. FOUR GROUPS OF SLENDER OBJECTS APPROXIMATELY 35 FT LONG ARE NOW VISIBLE IN THE OPEN STORAGE YARD.

25X

25X

TOP SECRET

25X

25X

MISSION 4031 17-24 AUGUST 1966

(SEE ATTACHMENT)

TBILISI AIRFRAME PLANT 31

UR 4140N 04452E

THE WORKSHOP NEAR THE FINAL ASSEMBLY BUILDING IS STILL UNDER CONSTRUCTION. NO MISSILES, MISSILE COMPONENTS, OR LARGE RAIL CARS OBSERVED.

STERLITAMAK ROCKET MOTOR TEST FACILITY

UR 5341N 05558E

A NEW, SMALL HORIZONTAL TEST CELL IS UNDER CONSTRUCTION NE OF THE ORIGINAL TEST CELL. WHEN COMPLETED, THE CELL WILL BE VERY SIMILAR TO THE SMALL CELLS AT BIYSK AND KRASNOYARSK. A NEWLY IDENTIFIED SMALL ROCKET TEST CELL IS APPROXIMATELY 250 FT SSE OF THE H-SHAPED BUILDINGS. THE CELL IS VERY SIMILAR TO THE SMALL ROCKET TEST CELL OBSERVED AT KAMENSK-SHAKHTINSKIY. NO MISSILES OR TEST ACTIVITY OBSERVED.

BIYSK ROCKET MOTOR TEST FACILITY

UR 5229N 08507E

A FAINT BURN MARK IS OBSERVED ON THE PAD OF THE LARGE HORIZONTAL TEST CELL AT THE ORIGINAL TEST FACILITY. EROSION ON THE ESCARPMENT NORTH OF THE ISOLATED TEST POSITION IS INDICATIVE OF RECENT TEST ACTIVITY. NO MISSILES OR MISSILE-RELATED EQUIPMENT OBSERVED.

A FENCE IS UNDER CONSTRUCTION THAT WILL SURROUND THE 2 COMPLETED HOLD REVETMENTS AND THE LARGE CUTBACK EXCAVATION WEST OF THE ISOLATED TEST POSITION. EXCAVATIONS ARE AT THE OPPOSITE ENDS OF THE ISOLATED TEST FACILITY. TWO OF THE DIAGONALLY-ALIGNED BUILDINGS EAST OF THE OFFSET BUILDINGS ARE COMPLETE, ONE IS NEARING COMPLETION, AND THE EXCAVATION FOR THE FOURTH BUILDING IS ESSENTIALLY UNCHANGED SINCE

A LARGE RECTANGULAR BUILDING IN THE WOODS SOUTH OF THE OFFSET BUILDINGS IS NOW COMPLETE. A SMALL BUILDING UNDER CONSTRUCTION AND EXCAVATIONS FOR 2 OTHERS ARE AT THE EDGE OF THE WOODS SW OF THE DIAGONALLY-ALIGNED BUILDINGS.

TOP SECRET

Approved For Release 2005/11/17 : CIA-RDP03-00140R000100010034-4

MISSION 4031 17-24 AUGUST 1966

K1

K1

KAMENSK-SHAKHTINSKIY RKT. MOTOR TEST FAC UR 4819N 04016E

A SMALL ROCKET MOTOR CARRIER IS OBSERVED ON THE RAIL SPUR LEADING INTO THE LARGE HORIZONTAL TEST CELL. THE EXPANSION OF THE SMALL REVETTED BUILDING EAST OF THE LARGE TEST CELL NOW APPEARS COMPLETE. A SMALL ROCKET TEST CELL IS NORTH OF THE LARGE TEST CELL BETWEEN THE REVETTED CONTROL BUILDING AND THE BALLISTICS TEST RANGE. NO MISSILES OR TEST ACTIVITY OBSERVED.

K1

KEMEROVO ROCKET MOTOR TEST FACILITY UR 5526N 08557E

CONSTRUCTION CONTINUES ON THE SW END OF THE LARGE HORIZONTAL TEST CELL. THE SMALL HORIZONTAL TEST CELL IMMEDIATELY NW OF THE LARGE CELL IS UNCHANGED SINCE SURFACING OF THE FACE OF THE L-SHAPED BLAST DEFLECTOR IS PROGRESSING SLOWLY. NO INDICATIONS OF TEST ACTIVITY OBSERVED.

K1

K1

PING-FENG-SHE-CHENG TANK PLANT CH 4039N 10954E

ACTIVITY AT THE PLANT IS LIGHT. NO MISSILES, MISSILE-RELATED EQUIPMENT, NEW CONSTRUCTION, CHANGES IN FACILITIES, OR PREVIOUSLY UNREPORTED FEATURES OBSERVED.

K1

HU-HO-HAO-TE SUSP SOL PROPL RKT MTR CPLX CH 4044N 11158E

EXTENSIVE CONSTRUCTION ACTIVITY IS EVIDENT THROUGHOUT THE COMPLEX, ESPECIALLY IN THE SUSPECT PROPELLANTS MANUFACTURING AND FABRICATION AREAS. NUMEROUS VEHICLES AND ABUNDANT CONSTRUCTION MATERIALS OBSERVED IN THE COMPLEX. A NEW POSSIBLE TEST/PROPELLANTS STORAGE FACILITY IS UNDER CONSTRUCTION NORTH OF THE FABRICATION AREA. A SIMILAR BUT LARGER FACILITY IS UNDER

Approved For Release 2005/11/17 : CIA-RDP03-00140R000100010034-4

TOP SECRET

K1

Approved For Release

TOP SECRET CIA-RDP03-00140R000100010034-4

MISSION 4031 17-24 AUGUST 1966

CONSTRUCTION NW OF THE TEST FACILITY. AT LEAST 24 QUARTERS/STORAGE/ADMINISTRATION BUILDINGS ARE UNDER CONSTRUCTION IN THE SOUTHERN HOUSING AREA. NO OVERALL SECURITY OR DEFENSES OBSERVED.

K1

[Redacted]

LAO CAI SAM SEARCH

VN 2229N 10359E

[Redacted] - APPROXIMATELY 10 PERCENT OF THE CENTRAL-SOUTHERN PORTION OF THE SEARCH AREA IS COVERED BY 20-30 PERCENT CLOUD-COVERED PHOTOGRAPHY. NO NEW SAM INSTALLATIONS IDENTIFIED.

[Redacted] -- APPROXIMATELY 5 PERCENT OF THE CENTRAL-SOUTHERN PORTION OF THE SEARCH AREA IS COVERED BY 30 PERCENT CLOUD-COVERED PHOTOGRAPHY. NO NEW SAM INSTALLATIONS IDENTIFIED.

[Redacted]

DIEN BIEN PHU SAM SEARCH

VN 2123N 10301E

[Redacted] -- APPROXIMATELY 1 PERCENT OF THE EASTERN PORTION OF THE SEARCH AREA IS COVERED BY 40 PERCENT CLOUD-COVERED PHOTOGRAPHY. NO NEW SAM INSTALLATIONS IDENTIFIED.

[Redacted] - APPROXIMATELY 3 PERCENT OF THE EASTERN PORTION OF THE SEARCH AREA IS COVERED BY 30 PERCENT CLOUD-COVERED PHOTOGRAPHY. NO NEW SAM INSTALLATIONS IDENTIFIED.

[Redacted]

CAO BANG SAM SEARCH AREA

VN 2240N 10615E

APPROXIMATELY 5 PERCENT OF THE CENTER PORTION OF THE SEARCH AREA IS COVERED BY 90 PERCENT CLOUD-COVERED PHOTOGRAPHY. NO NEW SAM INSTALLATIONS IDENTIFIED.

[Redacted]

MISSION 4031 17-24 AUGUST 1966

LENINGRAD PROB LR SAM LCH CPLX SEARCH UR 5955N 03020E

NO NEW OR PREVIOUSLY UNOBSERVED AMM/SAM LAUNCH OR ELECTRONIC FACILITIES IDENTIFIED. ONLY AN AREA SSE OF LENINGRAD IS VISIBLE.

[Redacted]

PAO-TOU SAM SITE A02-2 CH 4045N 11004E

SITE CONSISTS OF 6 FENCED LAUNCH POSITIONS WITH 6 LAUNCHERS. SIX CANVAS-COVERED MISSILE TRANSPORTERS ARE INSIDE THE 6 LAUNCH POSITIONS. CENTRAL GUIDANCE AREA IS FENCED AND CONTAINS A FAN SONG RADAR, 8 VANS, AND 4 PROBABLE VEHICLES. ALSO INSIDE AND ADJACENT TO LAUNCH AREA ARE 4 PROBABLE MISSILE TRANSPORTERS, 3 OF WHICH ARE CANVAS COVERED, 5 VEHICLES, 6 VEHICLES/PIECES OF EQUIPMENT, APPROXIMATELY 50 TENTS, AND 6 PROBABLE SMALL BUILDINGS. NO SECURITY FENCE OBSERVED.

NO NEW CONSTRUCTION, CHANGES IN FACILITIES, OR PREVIOUSLY UNREPORTED FEATURES OBSERVED.

[Redacted]

SAN-YUAN SAM SITE A06-2 CH 3440N 10859E

LAUNCH POSITIONS AND CENTRAL GUIDANCE AREA ARE UNOCCUPIED. HOWEVER, 6 SA-2 LAUNCHERS, 26 PROBABLE TRACKED PRIME MOVERS, 5 VAN TRAILERS, AND 5 UNIDENTIFIED VEHICLES ARE PARKED ADJACENT TO THE SW EDGE OF THE LAUNCH AREA. APPROXIMATELY 20 UNIDENTIFIED VEHICLES ARE LOCATED IN A SMALL SUPPORT AREA IMMEDIATELY NE OF THE LAUNCH AREA.

NO NEW CONSTRUCTION, CHANGES IN FACILITIES, OR PREVIOUSLY UNREPORTED FEATURES OBSERVED.

[Redacted]

HAI PHONG SAM SITE A31-2 VN 2054N 10636E

NO MISSILES, MISSILE-RELATED EQUIPMENT, NEW CONSTRUCTION, CHANGES IN FACILITIES, OR PREVIOUSLY UNREPORTED FEATURES OBSERVED.



TOP SECRET

25X

25X

MISSION 4031 17-24 AUGUST 1966

X1

X1

25X

HAI PHONG SAM SITE A33-2

VN 2056N 10636E

NO MISSILES, MISSILE-RELATED EQUIPMENT, NEW CONSTRUCTION, CHANGES IN FACILITIES, OR PREVIOUSLY UNREPORTED FEATURES OBSERVED.

X1

KAUNAS SAM SUPPORT FACILITY

UR 5451N 02400E

BONUS 1

3.5 NM SE OF KAUNAS. FACILITY IS IRREGULAR IN PATTERN AND CONTAINS 1 LARGE AND 1 SMALL DRIVE-THROUGH BUILDING, 1 VERY LARGE VEHICLE MAINTENANCE BUILDING, 3 OTHER BUILDINGS, 5 PROBABLE BUILDINGS, 8 PROBABLE MISSILE TRANSPORTERS, AND 13 VEHICLES/PIECES OF EQUIPMENT.

X1

TOP SECRET

25X

25X

**Air  
Facilities**

TOP SECRET

MISSION 4031 17-24 AUGUST 1966

AIR FACILITIES

MINSK/MACHULISHCHE AIRFIELD

UR 5347N 02735E

OB -- 20 BLINDER, 1 BULL, 24 FISHPOT, 1 FLASHLIGHT/FIREBAR, 2 FARMER, 19 FAGOT/FRESCO, 3 CAB, 2 COLT, AND 3 HOUND.

NO ASM FACILITY OR CHANGES OBSERVED.

NO NEW CONSTRUCTION, CHANGES IN FACILITIES, OR PREVIOUSLY UNREPORTED FEATURES OBSERVED.

KALININGRAD/PROVEREN AIRFIELD

UR 5446N 02025E

EASTERN END OF THE FIELD IS NOT COVERED.

OB -- 25 BLINDER AND 6 BADGER.

NO NEW CONSTRUCTION, CHANGES IN FACILITIES, OR PREVIOUSLY UNREPORTED FEATURES OBSERVED.

ZHITOMIR/SKOMOROKHI AIRFIELD

UR 5010N 02844E

OB -- 23 BLINDER, 26 BADGER, 28 FISHPOT, 11 FAGOT/FRESCO, AND 1 COOKPOT.

NO ASM STORAGE FACILITY OBSERVED.

NO NEW CONSTRUCTION, CHANGES IN FACILITIES, OR PREVIOUSLY UNREPORTED FEATURES OBSERVED.

ANADYR/LENINKA AIRFIELD

UR 6442N 17742E

OB -- [ ] -- 4 BADGER, 13 FARMER, 1 FRESCO, 28 FAGOT, 1 COOT, 2 CRATE, 3 CAB, 6 COLT, AND 1 HOUND. AIRFIELD IS EQUIPPED WITH ILS AND GCA. A PARALLEL TAXIWAY ON THE WEST SIDE OF THE RUNWAY CONNECTING THE 2 PARKING APRONS IS UNDER CONSTRUCTION.

TOP SECRET

Approved For Release ~~TOP SECRET~~ CIA-RDP03-00140R000100010034-4

MISSION 4031 17-24 AUGUST 1966

[REDACTED] -- 4 BADGER, 11 FARMER, 29 FAGOT/FRESCO, 1 COOT, 5 CRATE, 3 CAB, 3 COLT, 1 PROBABLE HOUND, AND 2 PROBABLE SMALL SWEPT-WING.

NO NEW CONSTRUCTION, CHANGES IN FACILITIES, OR PREVIOUSLY UNREPORTED FEATURES OBSERVED.

[REDACTED]

USSURIYSK/VOZDVIZHENKA AIRFIELD

UR 4355N 13156E

OB -- 47 BADGER, 9 BEAGLE, 35 FITTER, 1 FRESCO, 5 FAGOT, 1 CAB, AND 1 SAILPLANE. THE NW PORTION OF THE LOOP TAXIWAY IS BEING REPAIRED. NO ASM STORAGE OBSERVED.

[REDACTED]

SEVEROMORSK AIRFIELD

UR 6901N 03325E

OB -- 49 BADGER.

NO NUCLEAR STORAGE FACILITY OBSERVED. ASM FACILITY IS CLOUD COVERED.

NO NEW CONSTRUCTION, CHANGES IN FACILITIES, OR PREVIOUSLY UNREPORTED FEATURES OBSERVED.

[REDACTED]

VORONEZH AIRCRAFT ASSEMBLY PLANT 64

UR 5138N 03915E

OB -- 2 FIDDLER, 1 CAMP, 1 CRATE, AND 2 CAB.

EXTENSION OF THE RUNWAY IS NEARING COMPLETION.

[REDACTED]

HSI-AN AIRFRAME PLANT YEN-LIANG AIRFIELD

CH 3439N 10915E

CONSTRUCTION CONTINUES. THE FINAL ASSEMBLY HALL IS EXTERNALLY COMPLETE AND THE RUNWAY EXTENSION IS NEARING COMPLETION.

Approved For Release ~~TOP SECRET~~ CIA-RDP03-00140R000100010034-4

Approved For Release 2005/11/17 : CIA-RDP03-00140R000100010034-4

MISSION 4031 17-24 AUGUST 1966

OB -- 1 BEAGLE, 6 FARMER, 3 FRESCO, 1 CAB, 1 CAB FUSELAGE, 5 COLT, 1 COLT FUSELAGE, AND 3 MAX/MOOSE.

CHENG-TU AIRFRAME PLANT

CH 3043N 10358E

OB -- 1 FAGOT/FRESCO, 1 CRATE, 22 SMALL PROBABLE SWEPT-WING, AND 3 POSSIBLE SMALL SWEPT-WING AIRCRAFT.

NO NEW CONSTRUCTION, CHANGES IN FACILITIES, OR PREVIOUSLY UNREPORTED FEATURES OBSERVED.

KUNOVICE AIRCRAFT PLANT

CZ 4902N 01727E

OB -- 27 MAYA, 5 SMALL STRAIGHT-WING, 4 SAILPLANES.

NO NEW CONSTRUCTION, CHANGES IN FACILITIES, OR PREVIOUSLY UNREPORTED FEATURES OBSERVED.

LIEN-CHENG AIRFIELD

CH 2540N 11645E

OB -- 1 BEAGLE AND 16 FAGOT.

NO NEW CONSTRUCTION, CHANGES IN FACILITIES, OR PREVIOUSLY UNREPORTED FEATURES OBSERVED.

WU-HU AIRFIELD

CH 3124N 11823E

OB -- 6 FISHBED (1 WITH TAIL ASSEMBLY REMOVED), 23 FAGOT/FRESCO (2 WITH TAIL ASSEMBLY REMOVED), AND 1 SMALL TWIN-ENGINE STRAIGHT-WING.

NO NEW CONSTRUCTION, CHANGES IN FACILITIES, OR PREVIOUSLY UNREPORTED FEATURES OBSERVED.

Approved For Release 2005/11/17 : CIA-RDP03-00140R000100010034-4

MISSION 4031 17-24 AUGUST 1966

SHAN-TOU AIRFIELD NORTHEAST

CH 2325N 11645E

OB -- NONE OBSERVED.

NO NEW CONSTRUCTION, CHANGES IN FACILITIES, OR PREVIOUSLY UNREPORTED FEATURES OBSERVED.

[Redacted]

PAPA AIRFIELD

HU 4722N 01730E

OB -- 5 SMALL DELTA-WING.

NO ELECTRONICS OR COMMUNICATIONS FACILITIES OBSERVED.

[Redacted]

RAVNETS AIRFIELD

BU 4232N 02716E

OB -- 11 FISHBED, 16 FAGOT/FRESCO, AND 1 SMALL STRAIGHT-WING.

NO NEW CONSTRUCTION, CHANGES IN FACILITIES, OR PREVIOUSLY UNREPORTED FEATURES OBSERVED.

[Redacted]

CARACAL AIRFIELD NEW

RU 4405N 02425E

OB -- 7 FISHBED, 4 FARMER, AND 19 FAGOT/FRESCO.

NO NEW CONSTRUCTION, CHANGES IN FACILITIES, OR PREVIOUSLY UNREPORTED FEATURES OBSERVED.

[Redacted]

OMSK AIRFIELD EAST

UR 5458N 07333E

OB -- 29 FISHPOT, 1 FLASHLIGHT/FIREBAR-TYPE, 17 FAGOT/FRESCO, 1 CAT/CUB, AND 4 CAB.

NO SIGNIFICANT CHANGE OBSERVED.

[Redacted]

TOP SECRET

25X  
25X  
25X

MISSION 4031 17-24 AUGUST 1966

CHING-TAO SEAPLANE STATION

CH 3603N 12017E

OB -- 5 MADGE (1 WITHOUT TAIL ASSEMBLY).

NO NEW CONSTRUCTION, CHANGES IN FACILITIES, OR PREVIOUSLY UNREPORTED FEATURES OBSERVED.

[Redacted]

[Redacted]

SARGODHA AIRFIELD

PK 3204N 07241E

OB -- 10 SMALL SWEEP-WING, 1 LIGHT STRAIGHT-WING, AND 6 POSSIBLE SMALL AIRCRAFT.

NO NEW CONSTRUCTION, CHANGES IN FACILITIES, OR PREVIOUSLY UNREPORTED FEATURES OBSERVED.

[Redacted]

TOP SECRET

25X  
25X

**Nuclear  
Energy**



25X1

Approved For Release 2005/11/17 : CIA-RDP03-00140R000100010034-4

Next 1 Page(s) In Document Exempt

Approved For Release 2005/11/17 : CIA-RDP03-00140R000100010034-4

**Naval  
Activity /  
Ports**

K1

[Redacted]

Approved For Release 2005/11/17 : CIA-RDP03-00140R000100010034-4

TOP SECRET

[Redacted]

25X  
25X

MISSION 4031 17-24 AUGUST 1966

[Redacted]

NAVAL ACTIVITY/PORTS

KUANG-CHOU SHIPYARD TUNG-LANG

CH 2304N 11315E BONUS 1

NEW 2-BAY FABRICATION BUILDING AT HEAD OF BUILDING WAYS APPEARS TO BE STRUCTURALLY COMPLETE.

OB -- 2 NEW CLASS DE (TENTATIVELY DESIGNATED CHIANGNAN CLASS) -- ONE APPARENTLY IS OUTFITTING AT THE MAIN QUAY AND THE SECOND IS IN AN ADVANCED STAGE OF CONSTRUCTION ON BUILDING WAY. A POSSIBLE THIRD DE HULL IS IN THE EARLY STAGES OF CONSTRUCTION ON THE BUILDING WAY. LST-1-CLASS LST AT MAIN QUAY. SEVERAL CARGO VESSELS ARE ALSO AT THIS FACILITY.

(SEE ATTACHMENT)

[Redacted]

K1

TOP SECRET

[Redacted]

[Redacted]

25X  
25X

**Biological/  
Chemical  
Warfare**

25X1

Approved For Release 2005/11/17 : CIA-RDP03-00140R000100010034-4

Approved For Release 2005/11/17 : CIA-RDP03-00140R000100010034-4

**Electronics/  
Communications**

TOP SECRET

25X

25X

MISSION 4031 17-24 AUGUST 1966

ELECTRONICS/COMMUNICATIONS

25X

BAYKONUR POSS ELECTRONICS FACILITY UR 4721N 06520E

NO NEW CONSTRUCTION, CHANGES IN FACILITIES, OR PREVIOUSLY UNREPORTED FEATURES OBSERVED.

[Redacted]

MANJAR RADAR SEARCH AREA CH 4000N 08530E

NO EVIDENCE OF RADAR OR ELECTRONICS FACILITY OBSERVED WITHIN THE LIMITS OF PHOTOGRAPHY.

[Redacted]

CHIEH-MO SUSPECT RADAR ACTIVITY CH 3809N 08531E

NO EVIDENCE OF RADAR OR ELECTRONICS FACILITY OBSERVED WITHIN THE LIMITS OF PHOTOGRAPHY.

[Redacted]

POLOTSK TALL KING FACILITY UR 5530N 02853E BONUS 1

3 NM EAST OF POLOTSK. SECURED FACILITY CONSISTS OF 1 TALL KING ANTENNA, 1 ANTENNA BUILDING, 1 SUPPORT BUILDING, 1 GENERATOR BUILDING, AND 2 SMALL MAINTENANCE BUILDINGS.

[Redacted]

TOP SECRET

25X

25X

**Military  
Activity**



K1

Approved For Release 2005/11/17 : CIA-RDP03-00140R000100010034-4

TOP SECRET

Approved For Release 2005/11/17 : CIA-RDP03-00140R000100010034-4

[Redacted]

MISSION 4031 17-24 AUGUST 1966

25X

25X

25X

MILITARY ACTIVITY

HENG-YANG AMMUNITION DEPOT SOUTHEAST CH 2651N 11241E

APPROXIMATELY 12 VEHICLES OBSERVED IN TRANSSHIPMENT AREA. NO INDICATION OF CW-ASSOCIATED ACTIVITY.

NO NEW CONSTRUCTION, CHANGES IN FACILITIES, OR PREVIOUSLY UNREPORTED FEATURES OBSERVED.

[Redacted]

HUANG-PEI MUNITIONS STORAGE CH 3048N 11419E

NO INDICATION OF CW-ASSOCIATED ACTIVITY.

NO NEW CONSTRUCTION, CHANGES IN FACILITIES, OR PREVIOUSLY UNREPORTED FEATURES OBSERVED.

[Redacted]

KUANG-CHOU AMMUNITION DEPOT SHIH-PAI CH 2308N 11321E

NO INDICATION OF CW-ASSOCIATED ACTIVITY. MINOR GROUND SCARRING OBSERVED IN NORTHERN PART OF DEPOT.

NO NEW CONSTRUCTION, CHANGES IN FACILITIES, OR PREVIOUSLY UNREPORTED FEATURES OBSERVED.

[Redacted]

[Large vertical redacted area on the right side of the page]

K1

K1

K1

K1

Approved For Release 2005/11/17 : CIA-RDP03-00140R000100010034-4

[Redacted]

25X

25X

25X  
25X  
25X

K1

Approved For Release

~~TOP SECRET~~

[Redacted]

2005 RELEASE UNDER E.O. 13526 CIA-RDP03-00140R000100010034-4

MISSION 4031 17-24 AUGUST 1966

[Redacted]

SHANG-JAO AMMUNITION DEPOT WEST-SOUTHWEST CH 2822N 11754E

AT LEAST 2 STORAGE BUILDINGS HAVE WHITE STAINS NEAR THEM.

[Redacted]

NO NEW CONSTRUCTION, CHANGES IN FACILITIES, OR PREVIOUSLY UNREPORTED FEATURES OBSERVED.

[Redacted]

SHANG-JAO EXPLOSIVES STORAGE COMPLEX CH 2828N 11754E

A RESERVOIR IS NEAR THE CENTER OF THE SITE. WHITE

[Redacted]

OF THE STORAGE BUILDINGS.

NO NEW CONSTRUCTION, CHANGES IN FACILITIES, OR PREVIOUSLY UNREPORTED FEATURES OBSERVED.

[Redacted]

CHI-LUNG ARMY BARRACKS TI 2820N 08521E

NO INDICATION OF TROOP OR SUPPLY BUILDUP OBSERVED.

NO NEW CONSTRUCTION, CHANGES IN FACILITIES, OR PREVIOUSLY UNREPORTED FEATURES OBSERVED.

NO VEHICLES, WEAPONS, OR EQUIPMENT OBSERVED.

[Redacted]

KAUNAS ORDNANCE DEPOT PUG UR 5453N 02356E

NO NEW CONSTRUCTION, CHANGES IN FACILITIES, OR PREVIOUSLY UNREPORTED FEATURES OBSERVED.

NO VEHICLES, WEAPONS, OR EQUIPMENT OBSERVED.

[Redacted]

[Large vertical redacted area]

K1  
K1

K1

K1

K1

K1

K1

MISSION 4031 17-24 AUGUST 1966

25X  
25X  
25X

KECHVELLI AMMUNITION DEPOT TSIVI SE UR 4118N 04519E

NO INDICATION OF CW STORAGE OBSERVED. ONLY A PORTION OF THE SUPPORT AREA OBSERVED.

NO NEW CONSTRUCTION, CHANGES IN FACILITIES, OR PREVIOUSLY UNREPORTED FEATURES OBSERVED.

[Redacted]

LVOV AMMUNITION DEPOT NORTHWEST PUG UR 4953N 02357E

NO INDICATION OF CW STORAGE OBSERVED.

NO NEW CONSTRUCTION, CHANGES IN FACILITIES, OR PREVIOUSLY UNREPORTED FEATURES OBSERVED.

[Redacted]

PECHENGA POSSIBLE ARMY BARRACKS AL 3 UR 6934N 03113E

1 NM NORTH OF PECHENGA. POSSIBLE ARMY BARRACKS CONTAINS 4 BARRACKS-TYPE BUILDINGS, 2 LARGE ADMINISTRATION BUILDINGS/BARRACKS, 2 VEHICLE MAINTENANCE/STORAGE BUILDINGS, 2 VEHICLE STORAGE BUILDINGS, AND APPROXIMATELY 20 OTHER BUILDINGS.

OB -- APPROXIMATELY 40 UNIDENTIFIED VEHICLES.

[Redacted]

PECHENGA ARMY BARRACKS SOUTH AL 4 UR 6933N 03113E

EAST EDGE OF PECHENGA. INSTALLATION CONTAINS 16 PROBABLE BARRACKS, 3 PROBABLE ADMINISTRATION BUILDINGS/BARRACKS, 3 PROBABLE VEHICLE STORAGE/MAINTENANCE BUILDINGS, 3 PROBABLE VEHICLE SHEDS, 30 SUPPORT BUILDINGS, AN ATHLETIC FIELD, AND A PARADE FIELD.

[Redacted]

25X

TOP SECRET

25X  
25X  
25X

MISSION 4031 17-24 AUGUST 1966

PENZA ARMY BARRACKS AL 1 UR 5310N 04459E

OB -- 31 CARGO TRUCKS AND 10 VAN TRAILERS.

AREA APPEARS OCCUPIED AND ALL PORTIONS APPEAR ACTIVE.

[Redacted]

PETROPAVLOVSK ARMY BARRACKS NNE UR 5302N 15845E

OB -- 30 CARGO TRUCKS AND 10 OTHER VEHICLES/PIECES OF EQUIPMENT.

NO NEW CONSTRUCTION, CHANGES IN FACILITIES, OR PREVIOUSLY UNREPORTED FEATURES OBSERVED.

[Redacted]

STEPANAKERT ARMY BARRACKS UR 3948N 04645E

INSTALLATION CONTAINS 3 PROBABLE BARRACKS, 35 POSSIBLE DEPENDENTS QUARTERS, 1 LARGE MULTI-STORY, MULTI-WING ADMINISTRATION BUILDING, 4 LARGE PROBABLE STORAGE BUILDINGS, 14 SUPPORT BUILDINGS, 1 LARGE BUILDING UNDER CONSTRUCTION, 3 VEHICLE SHEDS, AND AT LEAST 10 ASSOCIATED BUILDINGS.

OB -- 5 PROBABLE 122 MM HOWITZERS, 13 PROBABLE MORTARS, 2 POSSIBLE TRACKED PRIME MOVERS, 1 BAT, 77 CARGO TRUCKS, 14 UTILITY TRUCKS, AND 1 POSSIBLE TRUCK-MOUNTED CRANE.

AREA APPEARS OCCUPIED AND ALL PORTIONS APPEAR ACTIVE.

[Redacted]

SYZRAN ARMY BARRACKS PLANT 718 AL 3 UR 5309N 04823E

OB -- 6 CARGO TRUCKS AND 15 OTHER VEHICLES/PIECES OF EQUIPMENT.

AREA APPEARS OCCUPIED AND ALL PORTIONS APPEAR ACTIVE.

[Redacted]

25X

TOP SECRET

25X

TOP SECRET

Approved For Release 2005/11/17 : CIA-RDP03-00140R000100010034-4

MISSION 4031 17-24 AUGUST 1966

SYZRAN ENG & ORDNANCE DEPOT RR STN EAST UR 5310N 04828E

PRESENCE OF OPEN AND COVERED STORAGE AND EXTENT OF OCCUPANCY IS UNDETERMINED.

OB -- AT LEAST 130 VEHICLES/PIECES OF EQUIPMENT.

[Redacted]

KODA SUSPECT MILITARY INSTALLATION UR 4134N 04447E

NO INDICATION OF CW MUNITIONS STORAGE OBSERVED.

NO NEW CONSTRUCTION, CHANGES IN FACILITIES, OR PREVIOUSLY UNREPORTED FEATURES OBSERVED.

[Redacted]

ULYANOVSK ARMY BARRACKS AL 3 UR 5419N 04823E

OB -- 8 CARGO TRUCKS AND 10 OTHER VEHICLES/PIECES OF EQUIPMENT.

AREA APPEARS OCCUPIED AND ALL PORTIONS APPEAR ACTIVE.

[Redacted]

ULYANOVSK ARMY BARRACKS & SIGNAL OCS UR 5420N 04824E

NO NEW CONSTRUCTION, CHANGES IN FACILITIES, OR PREVIOUSLY UNREPORTED FEATURES OBSERVED.

NO VEHICLES, WEAPONS, OR EQUIPMENT OBSERVED.

[Redacted]

VOLSK ARMY BARRACKS NORTHWEST UR 5205N 04720E

OB -- 13 CANVAS-COVERED POSSIBLE APC, 38 CARGO TRUCKS, AND 8 POSSIBLE UTILITY TRUCKS.

AREA APPEARS OCCUPIED AND ALL PORTIONS APPEAR ACTIVE.

[Redacted]

TOP SECRET

25X  
25X  
25X

~~TOP SECRET~~

Approved For Release 2005/11/17 : CIA-RDP03-00140R000100010034-4

MISSION 4031 17-24 AUGUST 1966

TAI-YUAN MILITARY INSTALLATIONS

CH 3805N 11238E

OB -- 6 PROBABLE TANKS.

NO NEW CONSTRUCTION, CHANGES IN FACILITIES, OR PREVIOUSLY UNREPORTED FEATURES OBSERVED.

[REDACTED]

TAI-YUAN BARRACKS AREA

CH 3756N 11233E

OB -- 62 TANKS/SP GUNS, 4 POSSIBLE FA PIECES, AND 21 CARGO TRUCKS.

NO NEW CONSTRUCTION, CHANGES IN FACILITIES, OR PREVIOUSLY UNREPORTED FEATURES OBSERVED.

[REDACTED]

PING-YAO BARRACKS AREA

CH 3712N 11209E

NO NEW CONSTRUCTION, CHANGES IN FACILITIES, OR PREVIOUSLY UNREPORTED FEATURES OBSERVED.

NO VEHICLES, WEAPONS, OR EQUIPMENT OBSERVED.

NO INDICATION OF MILITARY ACTIVITY OBSERVED.

[REDACTED]

FANG-CHENG ARMY BARRACKS

CH 2146N 10821E

OB -- 1 CARGO TRUCK.

NO INDICATIONS OF TROOP, SUPPLY, OR POL BUILDUP OBSERVED.

NO NEW CONSTRUCTION, CHANGES IN FACILITIES, OR PREVIOUSLY UNREPORTED FEATURES OBSERVED.

[REDACTED]

~~TOP SECRET~~

Approved For Release 2005/11/17 : CIA-RDP03-00140R000100010034-4

25X  
25X

**Complexes**

MISSION 4031 17-24 AUGUST 1966

COMPLEXES

NAN-NING COMPLEX

CH 2249N 10819E

IDENTIFICATION ONLY.

[Redacted]

KUANG-CHOU COMPLEX

CH 2307N 11315E

NO NEW CONSTRUCTION OR CHANGES IN INDUSTRIAL FACILITIES OBSERVED. NO CONSTRUCTION OF SECURITY, DEFENSES, OR CIVIL DEFENSE FACILITIES OBSERVED. NO EVIDENCE OF ABANDONMENT OR REDUCTION OF ANY MAJOR INDUSTRIAL OR ECONOMIC ACTIVITY. RAIL ACTIVITY APPEARS TO BE NORMAL.

[Redacted]

PEI-CHING COMPLEX

CH 3955N 11623E

IDENTIFICATION ONLY.

[Redacted]

CHENG-TU COMPLEX

CH 3040N 10404E

IDENTIFICATION ONLY.

[Redacted]

LANG SON COMPLEX

VN 2151N 10645E

NO EVIDENCE OF SUPPLY BUILDUP, TROOP MOVEMENTS, NEW CONSTRUCTION AT TRANSPORTATION FACILITIES, OR COMMUNICATION FACILITIES OBSERVED.

[Redacted]

WU-HU COMPLEX

CH 3121N 11822E

NO NEW CONSTRUCTION, CHANGES IN FACILITIES, OR PREVIOUSLY UNREPORTED FEATURES OBSERVED.



MISSION 4031 17-24 AUGUST 1966

K1

[Redacted]

[Redacted]

K1

[Redacted]

LIU-CHOU COMPLEX

CH 2418N 10924E

NO EVIDENCE OF INCREASED ACTIVITY IN RAIL YARDS OR IN MILITARY FACILITIES. NO NEW MAJOR MILITARY OR INDUSTRIAL FACILITIES OBSERVED.

[Redacted]

K1

SHAN-TOU COMPLEX

CH 2322N 11640E

COMPLEX, APPROXIMATELY 6 SQ MI IN AREA, CONSISTS OF RESIDENTIAL AREAS, LIGHT INDUSTRY, AND EXTENSIVE WAREHOUSES. THE COMPLEX IS NOT RAIL-SERVED. NO SIGNIFICANT INDUSTRIAL ACTIVITY, UNUSUAL SECURITY, OR CIVIL DEFENSES OBSERVED.

[Redacted]

K1

TAI-YUAN POSSIBLE ARMS MANUFACTURING PLANT CH 3753N 11234E

NO NEW CONSTRUCTION, CHANGES IN FACILITIES, OR PREVIOUSLY UNREPORTED FEATURES OBSERVED.

NO VEHICLES, WEAPONS, OR EQUIPMENT OBSERVED.

[Redacted]

K1

LAO CAI COMPLEX

VN 2231N 10359E

NO NEW CONSTRUCTION OR CHANGES IN INDUSTRIAL FACILITIES OR INDICATIONS OF TROOP AND SUPPLY BUILDUP.

[Redacted]

K1

PAO-TOU ARTILLERY PLANT 447

CH 4041N 10952E

CONSTRUCTION CONTINUES NORTH OF THE PLANT. NINETEEN UNIDENTIFIED OBJECTS ARE OBSERVED NE OF PLANT IMMEDIATELY OUTSIDE FENCED AREA.

NO NEW CONSTRUCTION, CHANGES IN FACILITIES, OR

[Redacted]

TOP SECRET

Approved For Release 2005/11/17 : CIA-RDP03-00140R000100010034-4

25X  
25X

MISSION 4031 17-24 AUGUST 1966

PREVIOUSLY UNREPORTED FEATURES OBSERVED.

NO VEHICLES, WEAPONS, OR EQUIPMENT OBSERVED.

[Redacted]

25X

PANG-PEI RAIL FACILITIES

CH 4341N 11159E

[Redacted]

CONSTRUCTION CONTINUES THROUGHOUT THE AREA.  
CONSIDERABLE BUILDING MATERIAL AND APPROXIMATELY 225  
PIECES OF ROLLING STOCK ARE OBSERVED. SEVERAL VEHICLES  
ARE IN THE AREA BUT NO WEAPONS OR EQUIPMENT CAN BE  
IDENTIFIED.

[Redacted]

TOP SECRET

25X  
25X

**Other  
Activity**

MISSION 4031 17-24 AUGUST 1966

25X  
25X

OTHER ACTIVITY

25X

CHAADAYEVKA SENSITIVE OPERATIONS COMPLEX UR 5307N 04602E

ALTHOUGH NEITHER PASS PROVIDES STEREO COVERAGE, THE 2 PASSES TOGETHER PROVIDE THE BEST COVERAGE OF THE INSTALLATION TO DATE.

SOUTH AREA

BUNKER 1 IS NOW COMPLETE AND EARTH-COVERED. IT IS RECTANGULAR WITH AT LEAST 4 VENTILATORS AND 2 VERY NARROW SLIT ENTRANCES, WHICH APPEAR TO BE PERSONNEL ENTRANCES. THERE ARE NO VEHICULAR ENTRANCES. A SMALL STEAM OR POWER PLANT AND 2 EARTH-COVERED POL TANKS ARE BETWEEN THE BUNKER AND THE CENTRAL SERVICE ROAD. BUNKER 2 IS COMPLETE AND EARTH COVERED, BUT TREE SHADOW OBSCURES DETAIL. SEVERAL NARROW OPEN TRENCHES ARE VISIBLE ON TOP OF THE BUNKER.

BUNKER 3 IS BEING EARTH COVERED, AND DARK MATERIAL IS BEING APPLIED TO THE EARTH COVERING. AN OPEN TRENCH CONNECTS BUNKERS 2 AND 3. A STANDPIPE IS NEWLY IDENTIFIED BETWEEN BUNKERS 2 AND 3. TWO LARGE MULTISTORY APARTMENT BUILDINGS (180 X 55 FT) ARE UNDER CONSTRUCTION IMMEDIATELY EAST OF BUNKER 2. DISTANCE BETWEEN BUNKER AND APARTMENTS IS APPROXIMATELY 200-250 FT.

BUNKER 4 IS UNDER CONSTRUCTION IN A DEEP EXCAVATION NNE OF BUNKER 1. THE BUNKER IS CONCRETE, MEASURES [REDACTED] [REDACTED] AND HAS AT LEAST 4 RECTANGULAR VENTILATORS ON THE ROOF. TWO LARGE MULTISTORY APARTMENT BUILDINGS ARE UNDER CONSTRUCTION APPROXIMATELY 500 FT NW OF THE BUNKER. BUNKERS 1, 2, 3, AND 4 ARE IN A SEPARATELY SECURED AREA.

25X

NORTH AREA

BUNKER 5 IS IDENTICAL TO BUNKER 4 IN THE SOUTH AREA. TWO MULTISTORY APARTMENT BUILDINGS (180 X 55 FT) ARE UNDER CONSTRUCTION APPROXIMATELY 500 FT EAST OF BUNKER 5.

BUNKER 6, APPROXIMATELY 150 X 85 FT (MEASUREMENTS FROM [REDACTED]) IS BEING EARTH-COVERED, AND CLOSELY RESEMBLES BUNKER 1 IN THE SOUTH AREA, INCLUDING THE STEAM OR POWER PLANT AND EARTH COVERED POL TANKS. ONE LARGE BUILDING, POSSIBLY AN APARTMENT BUILDING IS UNDER CONSTRUCTION NEARBY. THERE ARE FOOTINGS FOR AT LEAST 4 OTHER BUILDINGS BEING CONSTRUCTED. BUNKER 6 IS APPROXIMATELY 2,700 FT EAST OF BUNKER 5.

BUNKER 7 IS IDENTICAL TO BUNKERS 4 AND 5, AND IS APPROXIMATELY 2,500 FT EAST OF BUNKER 6. TWO LARGE

25X

25X

MISSION 4031 17-24 AUGUST 1966

APARTMENT BUILDINGS ARE UNDER CONSTRUCTION ENE OF THE BUNKER. A LARGE TRENCH, PROBABLY FOR A STEAMLINE, CONNECTS THE AREAS OF BUNKERS 6 AND 7. A SMALL, LOW-PROFILE EARTH-MOUNDED BUILDING IS NNW OF BUNKER 6. BUNKERS 5, 6, 7, AND THE LOW-PROFILE BUILDING ARE IN A SEPARATELY SECURED AREA.

A MILITARY HOUSING AREA AT THE WEST END OF THE RAIL FACILITY CONTAINS 6 COMPLETED LARGE APARTMENT BUILDINGS, 1 LARGE APARTMENT BUILDING UNDER CONSTRUCTION, 7 SMALL APARTMENT BUILDINGS, 4 SMALL ADMINISTRATION BUILDINGS, AND 1 LARGE PROBABLE ADMINISTRATION BUILDING UNDER CONSTRUCTION.

FOUR NEW POL TANKS ARE UNDER CONSTRUCTION IN THE RAIL FACILITY. EARTH COVERING OF THE 2 PREVIOUSLY REPORTED POL TANKS IS NOW COMPLETE, AND THEY ARE SECURED. THE EARTH COVERING THE TANKS IS FLAT, AND ONLY SLIGHTLY ABOVE THE LEVEL OF THE SURROUNDING GROUND.

THE ONLY VEHICLES OBSERVED IN THE AREA ARE FOR CONSTRUCTION SUPPORT.

THE RAIL FACILITY IS NOW KNOWN TO HAVE ONLY SUPERFICIAL RESEMBLANCE TO THOSE AT THE SENSITIVE OPERATIONS



THERE ARE NO ASSEMBLY/CHECKOUT BUILDINGS OR DRIVE-THROUGH BUILDINGS IN THE AREA.

NONE OF THE BUNKERS CAN BE ENTERED BY VEHICLES. THEY APPEAR TO HAVE PERSONNEL ENTRANCES ONLY.

THE BUNKERS DO NOT APPEAR TO BE INTENDED FOR STORAGE, AND SINCE APARTMENT BUILDINGS ARE LOCATED IN SUCH CLOSE PROXIMITY TO AT LEAST 4 OF THEM, IT APPEARS THAT AT LEAST THESE 4 BUNKERS (3, 4, 5, AND 7) ARE PERSONNEL BUNKERS.

THIS INSTALLATION IS NO LONGER CONSIDERED A SENSITIVE OPERATIONS COMPLEX, NOR IS IT ASSOCIATED WITH NUCLEAR WEAPONS STORAGE.

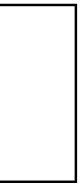
25X1

Approved For Release 2005/11/17 : CIA-RDP03-00140R000100010034-4

Approved For Release 2005/11/17 : CIA-RDP03-00140R000100010034-4

**Attachments**

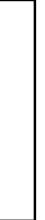
25X



TOP SECRET

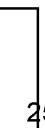
MISSION 4031, 17-24 AUGUST 1966

25X



25X

ATTACHMENT 1



25X

NPIC L-1667 (8/66)

LAUNCH SITE 79, OLOVYANNAYA ICBM COMPLEX, USSR

TOP SECRET

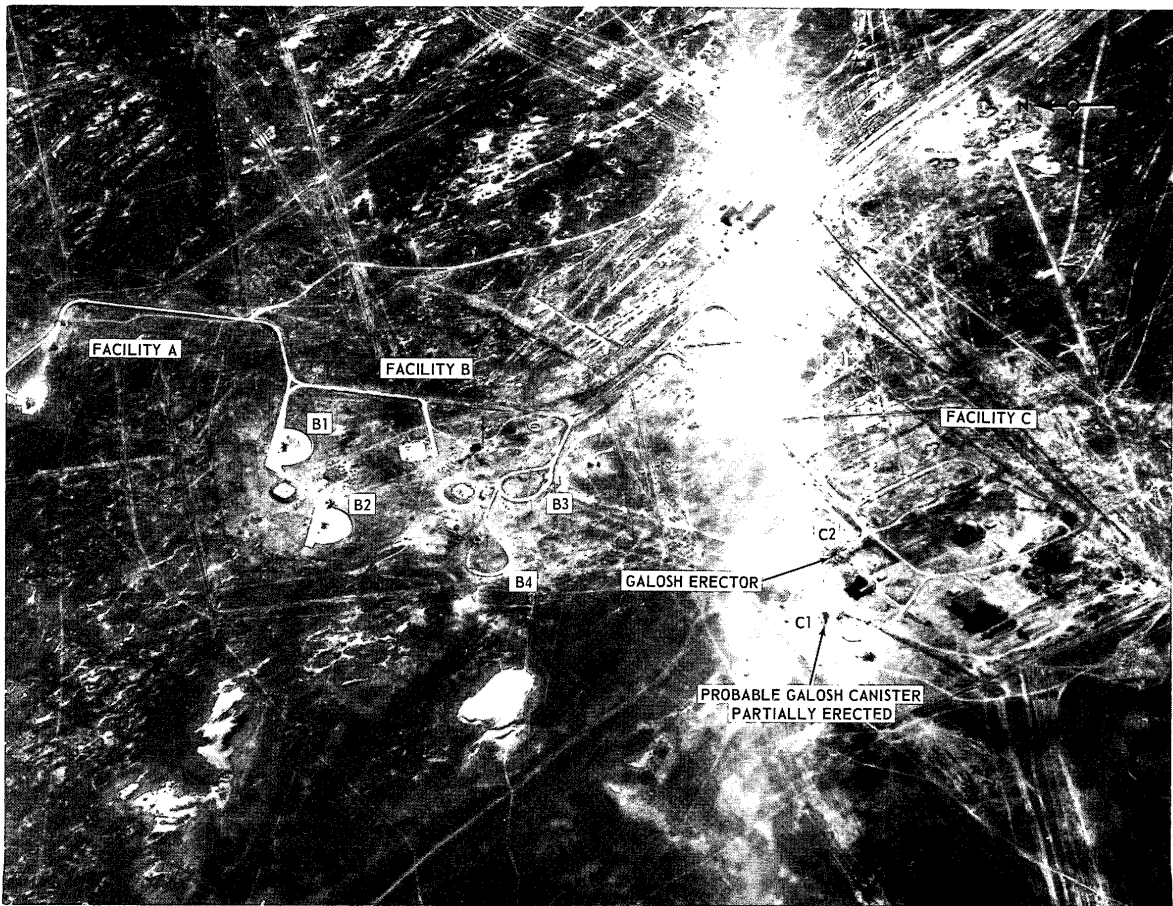


X1

X1







NPIC L-1668 (8/66)

LAUNCH COMPLEX B, SARY-SHAGAN ANTIMISSILE TEST CENTER, USSR ( )

TOP SECRET

TOP SECRET

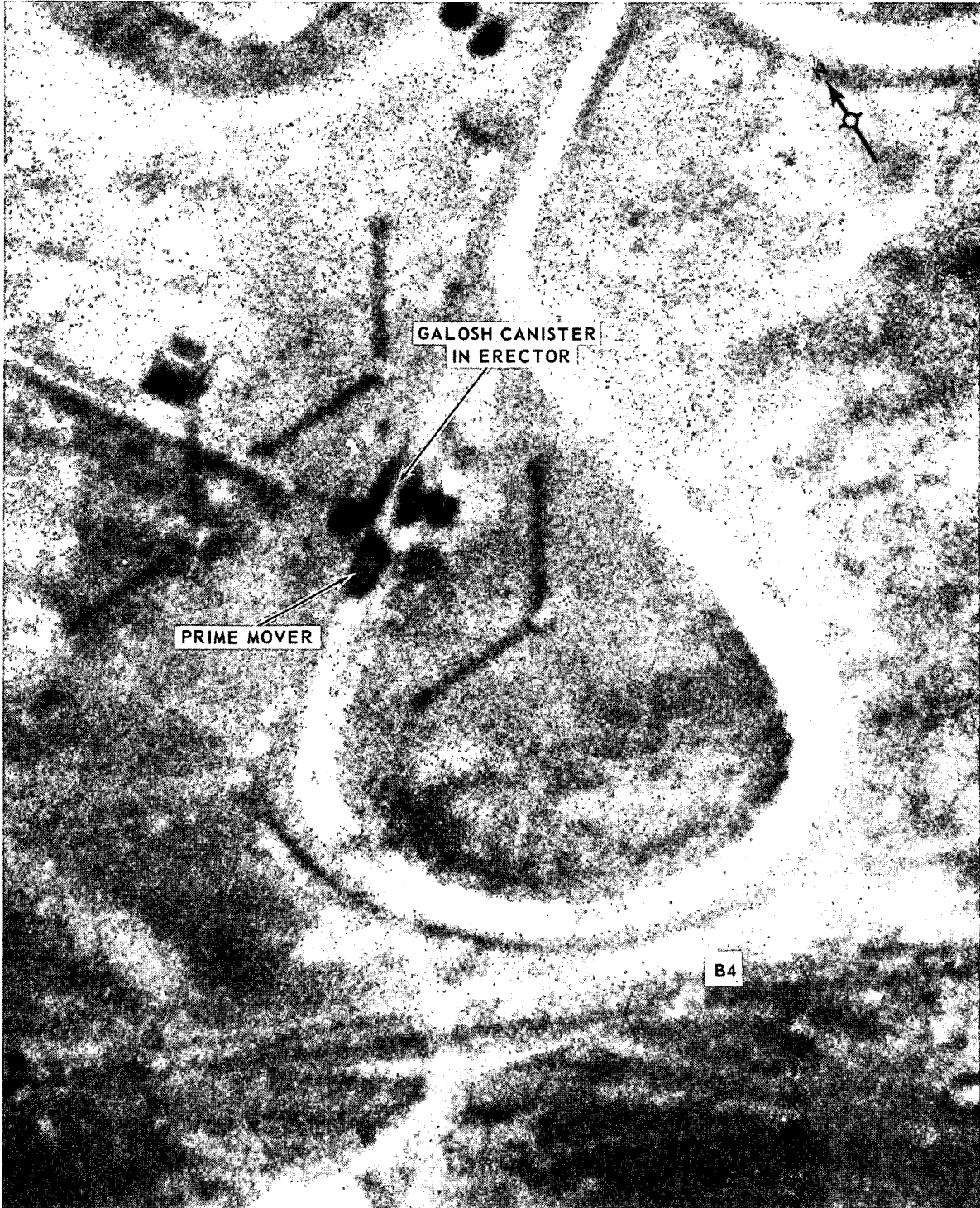
MISSION 4031, 17-24 AUGUST 1966

ATTACHMENT 2

~~TOP SECRET~~

MISSION 4031, 17-24 AUGUST 1966

ATTACHMENT 3

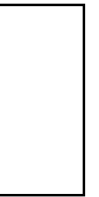
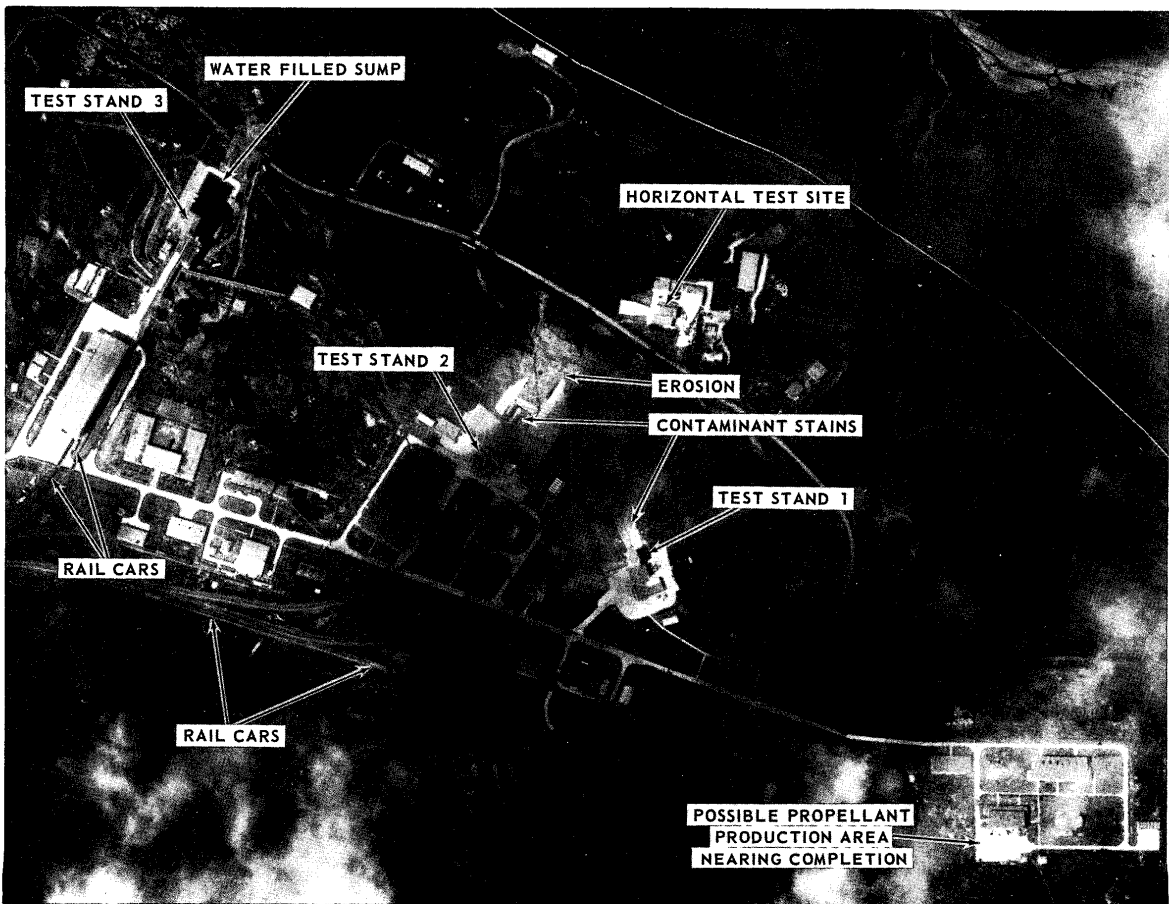


LAUNCH COMPLEX B, SARY-SHAGAN ANTI-MISSILE TEST CENTER, USSR

NPIC L-1669 (8/66)

~~TOP SECRET~~

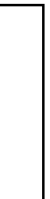
25X



TOP SECRET

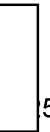
MISSION 4031, 17-24 AUGUST 1966

25X



ATTACHMENT 4

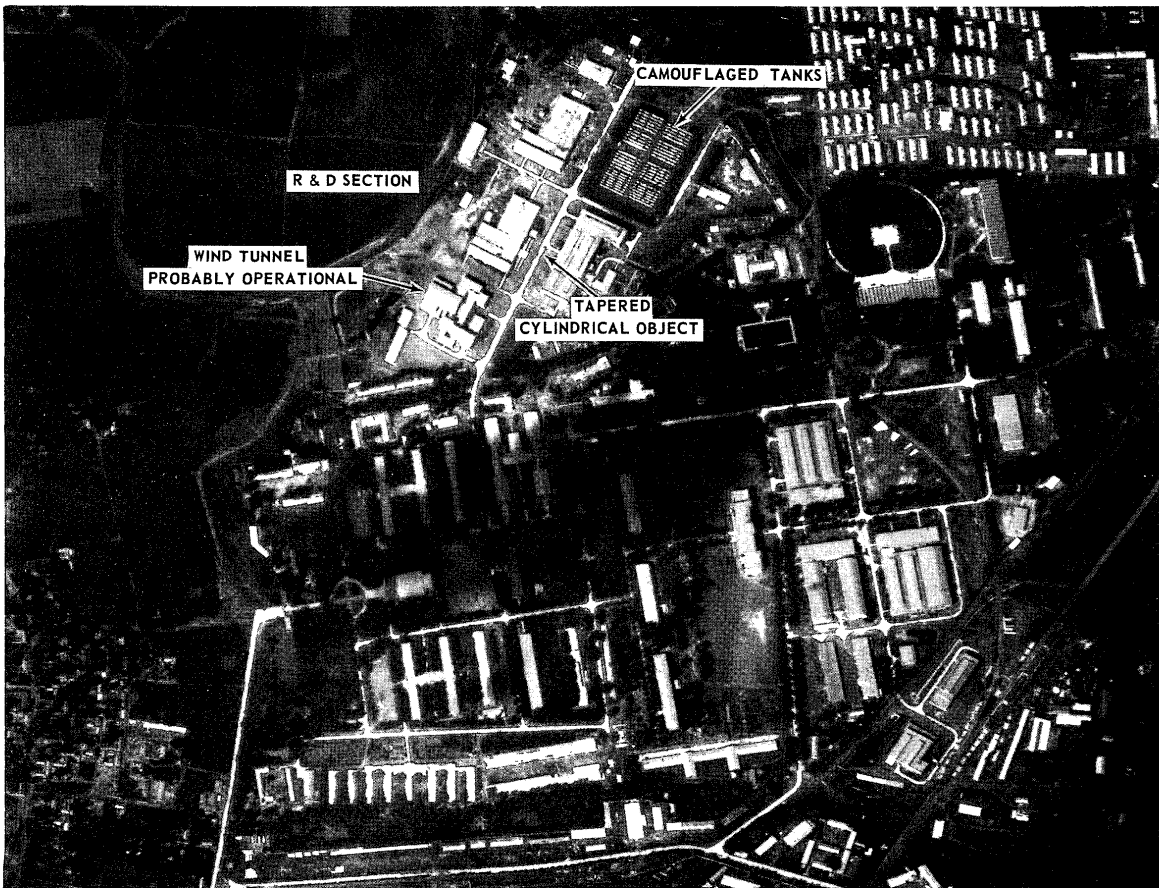
25X



5X

NPIC L-1070 (8/60)

ROCKET ENGINE TEST FACILITY, MISSILE DEVELOPMENT AND PRODUCTION CENTER, CHANG-HSIN-TIEN, PEI-CHING, CHINA



NPIC L-1671 (8/66)

INDUSTRIAL/ RESEARCH AND DEVELOPMENT AREA, MISSILE DEVELOPMENT AND PRODUCTION CENTER, CHANG-HSIN-TIEN, PEI-CHING, CHINA

TOP SECRET

TOP SECRET

MISSION 4031, 17-24 AUGUST 1966

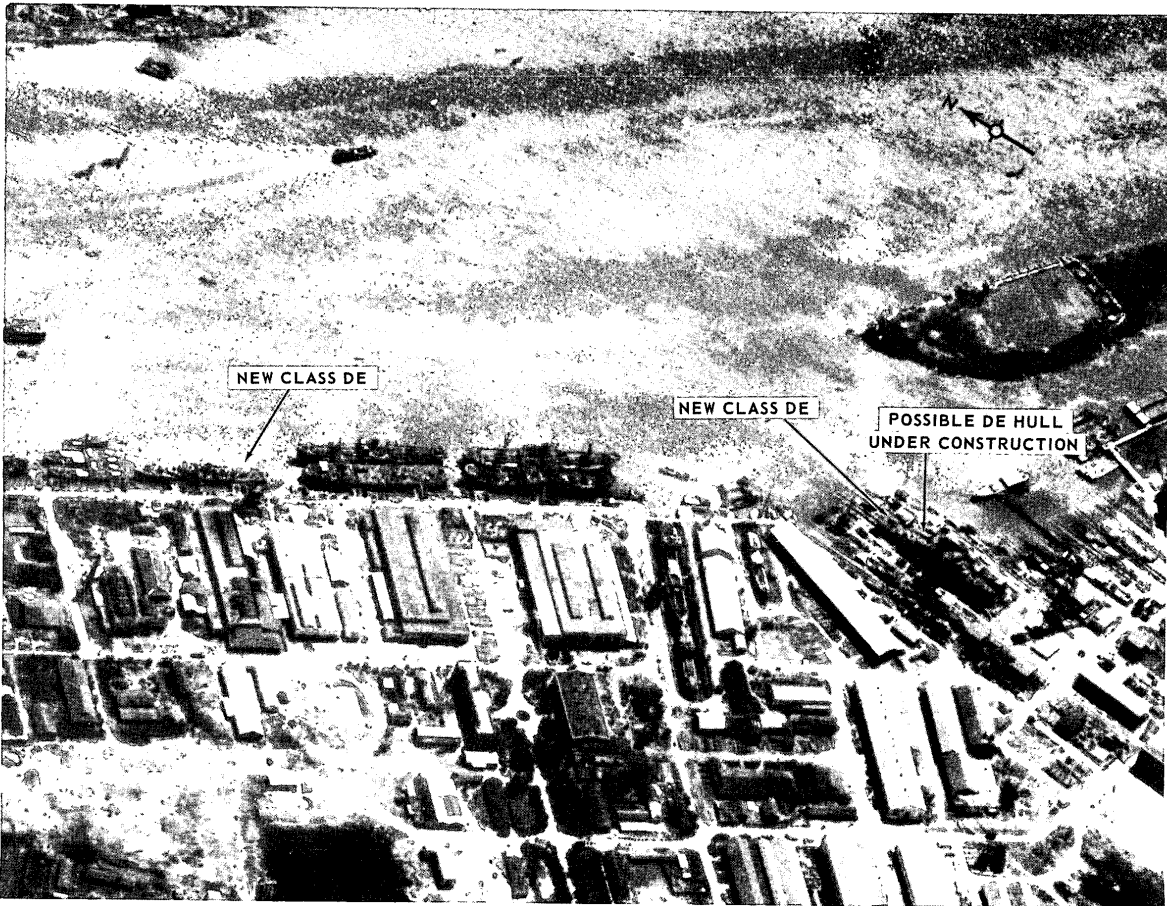
ATTACHMENT 5

25X2

Approved For Release 2005/11/17 : CIA-RDP03-00140R000100010034-4

Next 1 Page(s) In Document Exempt

Approved For Release 2005/11/17 : CIA-RDP03-00140R000100010034-4



NPIC L-1674 (8/66)

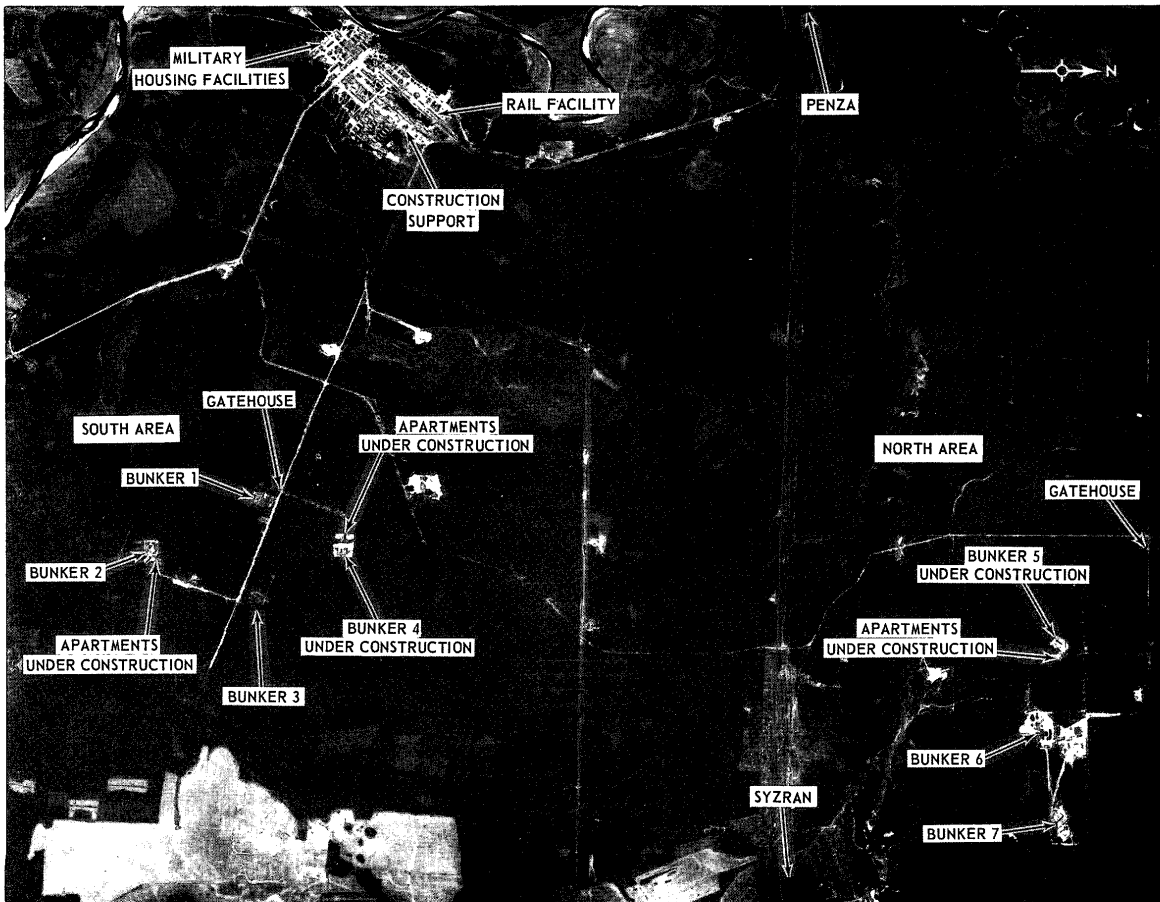
SHIPYARD TUNG-LANG, KUANG-CHOU, CHINA

TOP SECRET

TOP SECRET

MISSION 4031, 17-24 AUGUST 1966

ATTACHMENT 8



NPIC L-1675 (8/66)

SENSITIVE OPERATIONS COMPLEX, CHAADAYEVKA, USSR

TOP SECRET

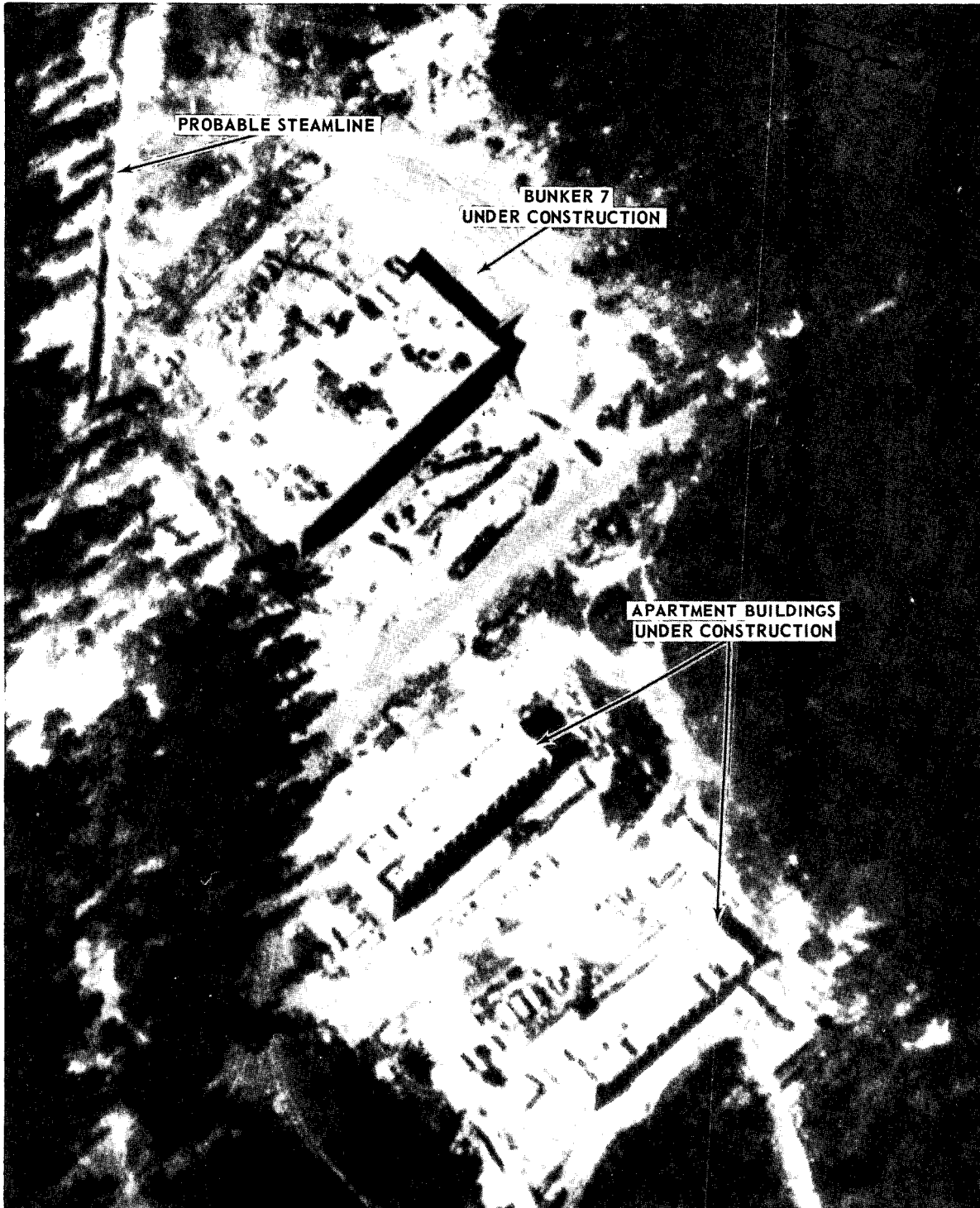
TOP SECRET

MISSION 4031, 17-24 AUGUST 1966

ATTACHMENT 9

MISSION 4031, 17-24 AUGUST 1966

ATTACHMENT 10



SENSITIVE OPERATIONS COMPLEX, CHAADAYEVKA, USSR

NPIC L-1676 (8/66)



**TOP SECRET**

**TOP SECRET**