

TOP SECRET



PIR

PHOTOGRAPHIC INTELLIGENCE REPORT

I
M
A
N
D

DECLASS REVIEW by NIMA/DOD

**SUMMATION OF MILITARY ACTIVITY
ON HAINAN ISLAND, CHINA**



CIA/PIR 67185

DATE JANUARY 1966
COPY 90
PAGES 115

TOP SECRET

25X1

Approved For Release 2006/02/07 : CIA-RDP02T06408R001200010034-0

Approved For Release 2006/02/07 : CIA-RDP02T06408R001200010034-0

RECORD COPY	COPY NO.	PUB. DATE	LOCATION	MASTER	DATE RECEIVED	LOCATION
DISPOSITION DATE(S)				STOCK	MINIMUM	MAXIMUM
CUT TO COPIES 0				Approved For Release 2006/02/07 : CIA-RDP02T06408R001200010034-0		
DATE	CUT TO COPIES	DATE	CUT TO COPIES	COPIES DESTROYED		
DATE	CUT TO COPIES	DATE	CUT TO COPIES			
DATE	CUT TO COPIES	MASTER	DATE			

DATE			RECEIVED OR ISSUED	NUMBER OF COPIES			DATE			RECEIVED OR ISSUED	NUMBER OF COPIES		
MO.	DAY	YR.		REC'D	ISS'D	BAL	MO.	DAY	YR.		REC'D	ISS'D	BAL
8	16	68	Dist. Unit #92	1		1							
8	2	72	Dist # 92			0	W	K	b				

25X1 TITLE NPIC PIR67185 Jan. 1966 SEC. CLASS. LOCATION 24952 25X1

RECORD COPY	COPY NO.	PUB. DATE	LOCATION	MASTER	DATE RECEIVED	LOCATION
DISPOSITION DATE(S)				STOCK	MINIMUM	MAXIMUM
Approved For Release 2006/02/07 : CIA-RDP02T06408R001200010034-0				0	0	10
CUT TO COPIES	DATE	CUT TO COPIES	DATE	COPIES DESTROYED		
0	7-73			33-36, 50, 103, 104, 115, 116		
CUT TO COPIES	DATE	CUT TO COPIES	DATE			
CUT TO COPIES	DATE	MASTER	DATE			

DATE			RECEIVED OR ISSUED	NUMBER OF COPIES			DATE			RECEIVED OR ISSUED	NUMBER OF COPIES		
MO.	DAY	YR.		REC'D	ISS'D	BAL	MO.	DAY	YR.		REC'D	ISS'D	BAL
2	27	67	Dist. Unit #39-48	10		10							
11	12	68	NPIC #39		1	9							
9	22	72	Dist # 40-48			0	W	K	G				
			PIR 73025										

TITLE	NPIC	SEC. CLASS.	LOCATION
25X1	<input type="text"/>	TS <input type="checkbox"/>	34764
		Feb. 1967	25X1

25X1

Approved For Release 2006/02/07 : CIA-RDP02T06408R001200010034-0

~~TOP SECRET~~

[Redacted]

[Redacted]

CIA/PIR-67185

25X1

25X1

CIA IMAGERY ANALYSIS DIVISION

SUMMATION OF MILITARY ACTIVITY
ON HAINAN ISLAND, CHINA

[Redacted]

25X1

- 1 -

TOP SECRET

[Redacted]

[Redacted]

25X1

25X1

CIA/PIR-67185

CIA IMAGERY ANALYSIS DIVISION

INTRODUCTION

This report is a systematic summation of all military activity on Hainan Island from [redacted]. The analysis of military activity has been done under the following categories:

25X1

- A. Missiles
- B. Electronics
- C. Airfields
- D. Naval
- E. Barracks Areas
- F. Military Storage (including POL)
- G. Coastal Defense and AAA
- H. New Construction Activity

Every installation that could be determined as having or possibly having military significance has been analyzed. The presentation of such targets includes: (1) a readout on the most recent coverage, (2) a comparative analysis on photography preceding the most recent coverage by approximately one year for changes and new construction activity, and (3) a photograph of the target. This procedure of presentation will give the analyst a listing of military installations on the island, an indication of the types and extent of military buildup within the past year, and a basis for monitoring buildups and changes in the future.

There are several areas on the island which do not have recent, good quality photographic coverage and therefore provide gaps in the analysis of current military activity on the island. These areas are:

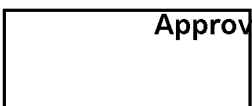
1. The west coast from Ling-Tou (18 41N-108 42E) north to Hsin-Ying-Shih (19 44N-109 17E)..
2. The interior of the island (specifically the areas around Chia-Lo-Shih (19 35N-110 00E), Lung-Tang-Shih (19 23N-110 13E), and Hsin-Shih (19 04N-109 53E)).
3. The coastal areas around Weng-Tien (19 56N-110 52E).

- 2 -

TOP SECRET

25X1

25X1



CIA IMAGERY ANALYSIS DIVISION

AREAS OF NEW MILITARY ACTIVITY* ON HAINAN ISLAND

Missiles

No missile activity could be identified.

Electronics

- 1. Ta-Hua Chiao Radar Site (Figure 5A)
- 2. Lo-Lo-Shih Radar Site (Figure 5B)
- 3. Li-An Radar Site (Figure 6B)
- 4. Hsia-Po Radar Site (Figure 6C)
- 5. Nan-Li Radar Site (Figure 6D)
- 6. Chang-Chiang Possible Electronics Site (Figure 7)

Airfields

- 1. Ling-Shui Airfield (Figure 9)
- 2. Chia-Lai-Shih Airfield (Figure 11A, 11B)
- 3. Yai-Hsien Airfield (Figure 8)

Naval Bases

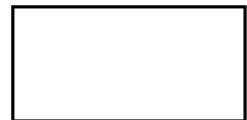
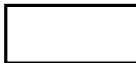
- 1. Ching-Lan Chiang Motor Torpedo Boat Base (Figure 15)
- 2. Ya-Lung Suspect Naval Base (Figure 14)

Barracks Areas

- 1. Yu-Lin Army Barracks North Associated Storage/Vehicle Parks (Figure 20)
- 2. Barracks Area U/C - Vicinity of Teng-Chiao-Shih (Figure 21A)
- 3. Probable Barracks Area U/C - Vicinity of Teng-Chiao-Shih (Figure 21B)
- 4. Ling-Shui Barracks Area (Figure 22B)

Storage

- 1. Storage Area U/C - Vicinity of Yu-Lin (Figure 46A)
- 2. Yu-Lin Ammunition Depot Ya-Hsien SE Pug (Figure 46B)
- 3. Storage/Equipment Park U/C - Vicinity of Yu-Lin (Figure 48A)
- 4. Probable Storage Area U/C - Vicinity of Yu-Lin (Figure 48B)
- 5. Probable Transportation Motor Pool - Vicinity of Yu-Lin (Figure 47A)



Approved For Release 2006/02/07 : CIA-RDP02T06408R001200010034-0

~~TOP SECRET~~

RDP02T06408R001200010034-0

CIA/PIR-67185

CIA IMAGERY ANALYSIS DIVISION

- 6. Probable Storage Area U/C - Vicinity of Yu-Lin (Figure 47C)
- 7. Chung-Wan Storage Area (Figure 49B)
- 8. Shu-Chang POL Storage Area (Figure 50B)

*These installations have either undergone significant changes in 1965 or were first observed on 1965 photography.

TOP SECRET

[Redacted]

[Redacted]

25X1
25X1

TOP SECRET

Approved For Release 2006/02/07 : CIA-RDP02T06408R001200010034-0

25X1

CIA/PIR-67185

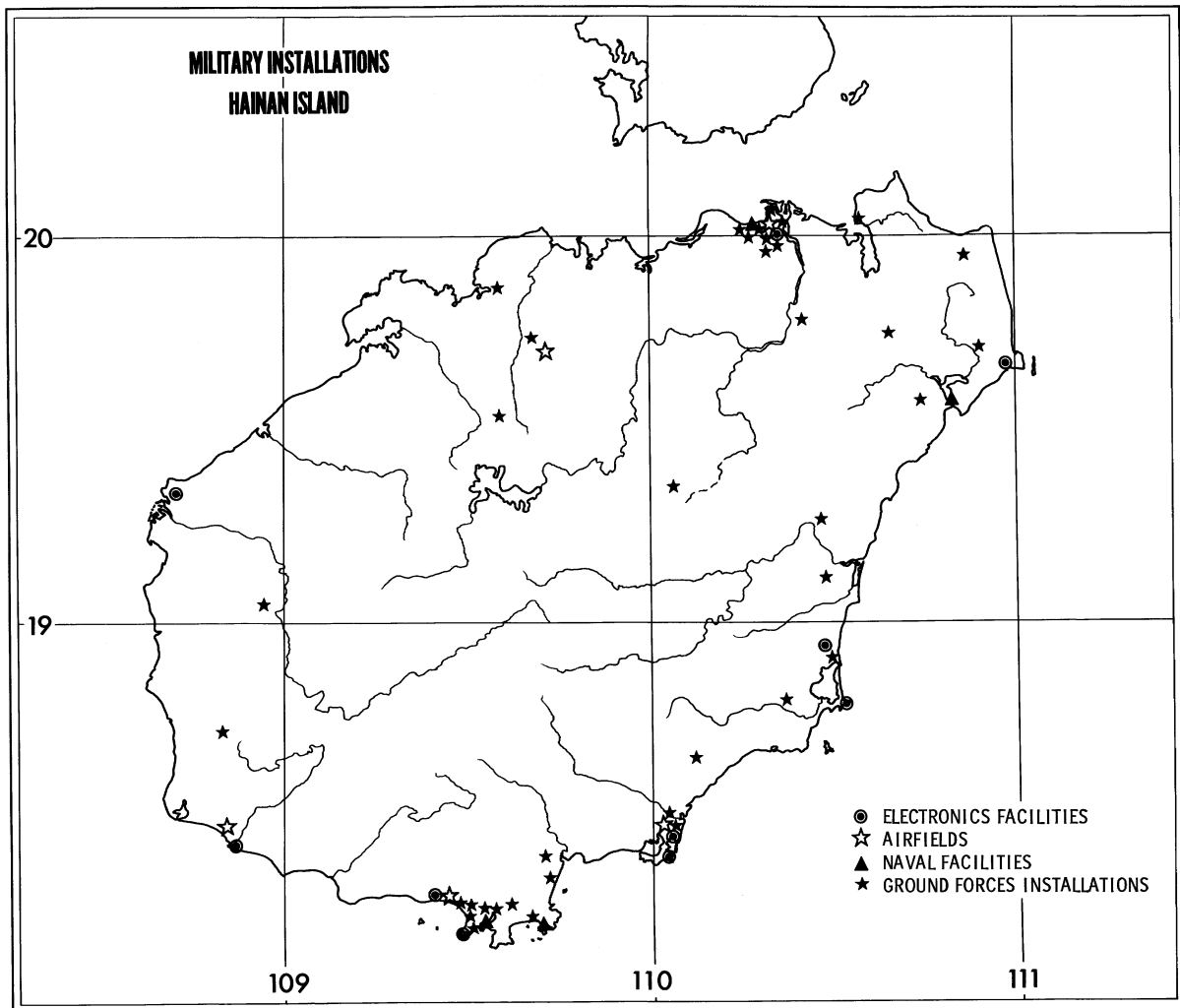
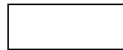


Figure 1
25X1

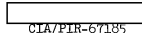
TOP SECRET

Approved For Release 2006/02/07 : CIA-RDP02T06408R001200010034-0

25X1



TOP SECRET 



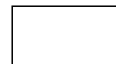
CIA/PIR-67185

CIA IMAGERY ANALYSIS DIVISION

25X1
25X1

Figures 2 and 3 show the concentration and types of military activity in the Yu-Lin complex and the Hai-Kou, Chung-Shan and Shu-Chang complexes. Installations shown on these graphics are reported in detail in the body of the report.

TOP SECRET 



25X1
25X1

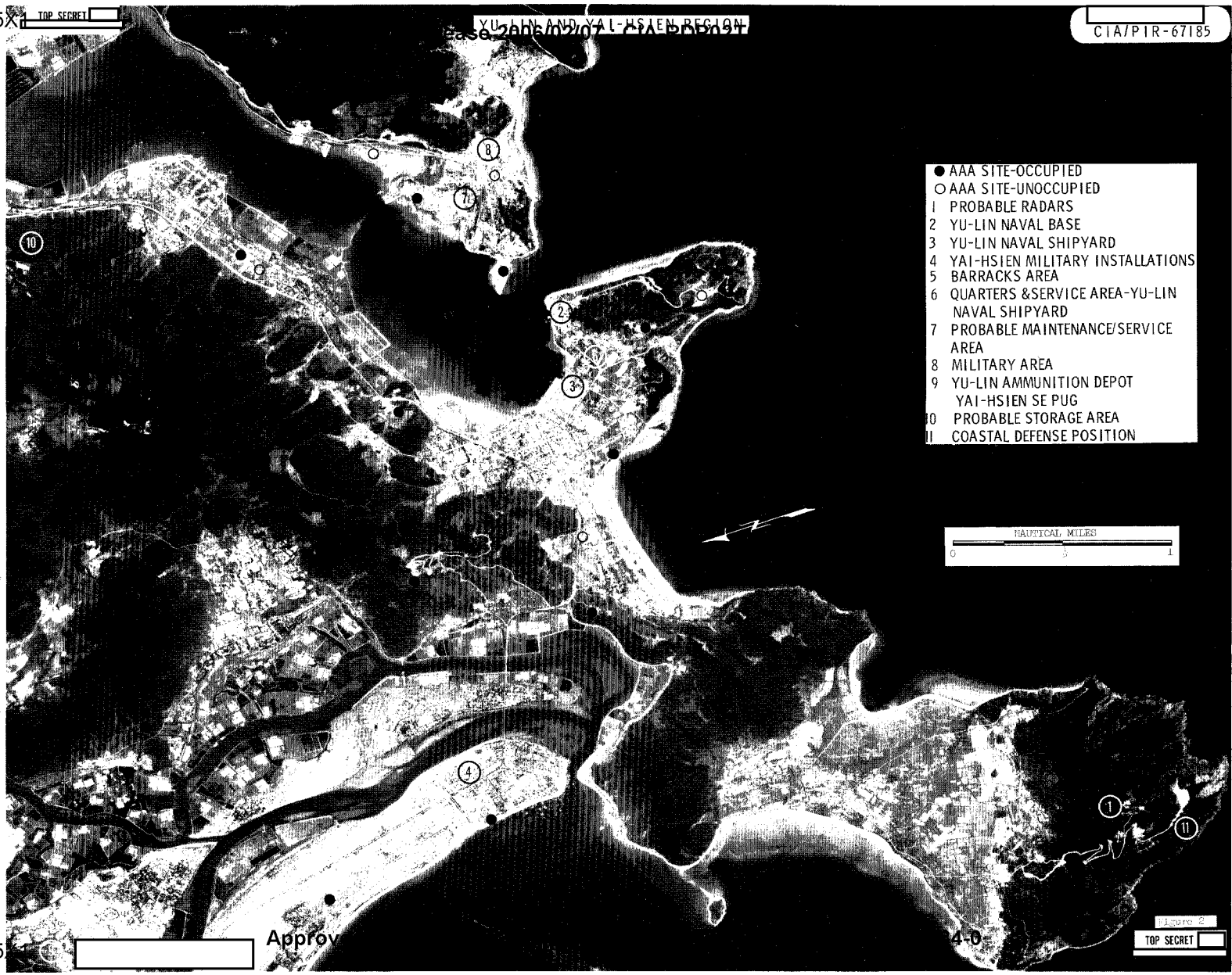
25X1

25X1

25X1 TOP SECRET

YU-LIN AND YAI-HSIEN REGION

CIA/PIR-67185



- AAA SITE-OCCUPIED
- AAA SITE-UNOCCUPIED
- 1 PROBABLE RADARS
- 2 YU-LIN NAVAL BASE
- 3 YU-LIN NAVAL SHIPYARD
- 4 YAI-HSIEN MILITARY INSTALLATIONS
- 5 BARRACKS AREA
- 6 QUARTERS & SERVICE AREA-YU-LIN NAVAL SHIPYARD
- 7 PROBABLE MAINTENANCE/SERVICE AREA
- 8 MILITARY AREA
- 9 YU-LIN AMMUNITION DEPOT
- 10 YAI-HSIEN SE PUG
- 11 PROBABLE STORAGE AREA
- 12 COASTAL DEFENSE POSITION



Approved

4-0

TOP SECRET

25X1

25X1

25X1 TOP SECRET

TOP SECRET

Approved For Release 2006/02/07 : CIA-RDP02T06408R001200010034-0

HAI-KOU - SHU-CHANG AND CHIUNG-SHAN COMPLEXES



Approved For Release 2006/02/07 : CIA-RDP02T06408R001200010034-0

TOP SECRET

Approved For Release 2006/02/07 : CIA-RDP02T06408R001200010034-0

UNCLASSIFIED
AUTHORITY

Approved For Release 2006/02/07 : CIA-RDP02T06408R001200010034-0

25X1

Approved For Release 2006/02/07 : CIA-RDP02T06408R001200010034-0

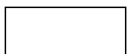
Next 1 Page(s) In Document Exempt

Approved For Release 2006/02/07 : CIA-RDP02T06408R001200010034-0

Approved For Release 2006/02/07 : CIA-RDP02T06408R001200010034-0

II. RADAR AND
ELECTRONICS

Approved For Release 2006/02/07 : CIA-RDP02T06408R001200010034-0



TOP SECRET



CIA/PIR-67185

CIA IMAGERY ANALYSIS DIVISION

II. Radar and Electronics Sites*

Figure 5A

A radar site (see arrow) is located on Sifa Point at 18 47N-110 31E. Facilities include one unidentified rotating radar, one possibly van mounted radar, one possible radar in a square hardstand, and 3 support buildings. A barracks area is located immediately south and contains 3 barracks, one probable vehicle/equipment shed, and 2 support buildings. The installation was first observed on [redacted] photography. The lack of more recent good quality coverage precludes confirmation and identification of the radars.

Figure 5B

A radar site is located one nm SW of Lo-Lo-Shih at 18 25N-108 52E. Facilities include one revetted SCR-270 type radar, one control building, 2 probable barracks, 2 possible vehicle sheds, and 2 support buildings. This installation was first observed on [redacted] photography.

*See Section V, Figure 43 for a possible radar site not reported in this Section.

TOP SECRET



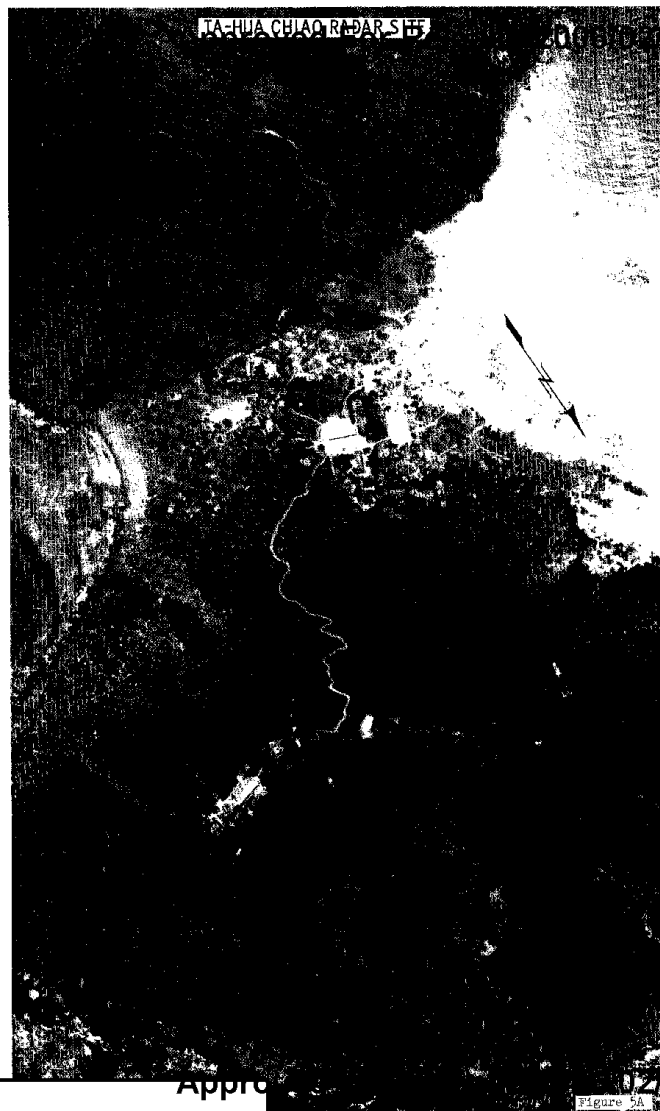
25X1

TOP SECRET

RADAR SITES

CIA/PIR-67185

25X1



25X1

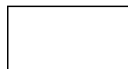
Appro

02107 : CIA RDP 021004

25X1

25X1

TOP SECRET



TOP SECRET



CIA/PIR-67185

CIA IMAGERY ANALYSIS DIVISION

Figure 6A

The Ling-Shui possible radar site is located at 18 23N-110 03E and contains a possible cross-slot radar and one support building. The facility was first observed on [redacted] photography with no changes having been observed on more recent missions.

Figure 6B

Li-An radar site was first identified on [redacted] photography. It is located 6 nm SE of Ling-Shui Airfield at 18 26N-110 04E. Facilities include 2 revetted SCR-270 type radars, each with a support building.

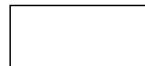
Figure 6C

A radar site is located 1.3 nm SE of Hsia-Po at 18 56N-110 28E. Facilities include 2 revetted SCR-270 type radars, 3 control buildings, one administration building, 3 probable barracks, and 6 support buildings. Comparative analysis of photography reveals that the radar pads were revetted and one of the radars was added between [redacted]

Figure 6D

A radar site is located 2 nm east of Nan-Li at 19 39N-110 59E. Facilities include one revetted SCR-270 type radar and one support building. A support area containing 9 buildings is located immediately south. This installation was first observed on [redacted] photography.

TOP SECRET



25X1

[Redacted] CIA/PJR-67185

RADAR SITES

LING-SHUI RADAR SITE

LI-AN RADAR SITE

07 :
4-0

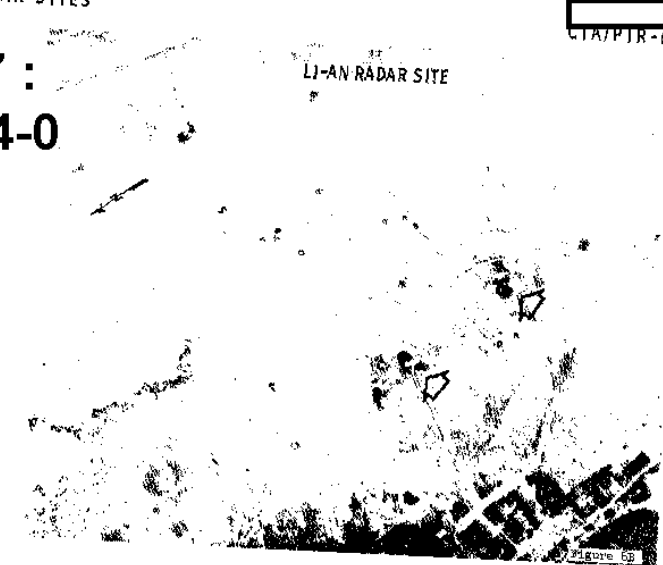
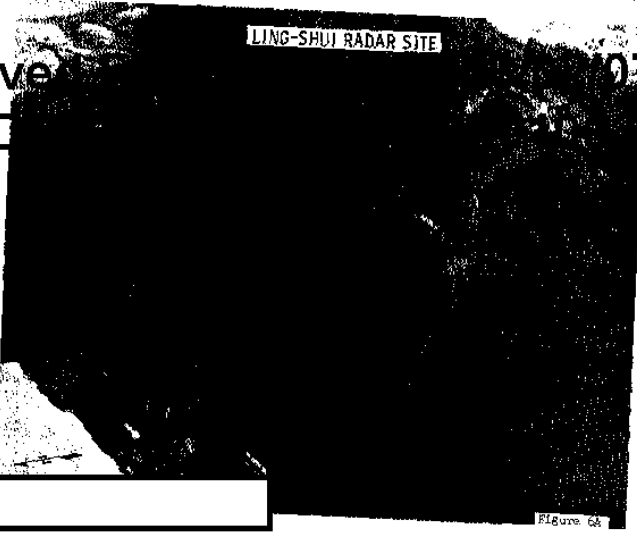


Figure 6A

Figure 6B

HSIA-PO RADAR SITE

NAN-LI RADAR SITE

07 :
4-0

5X1

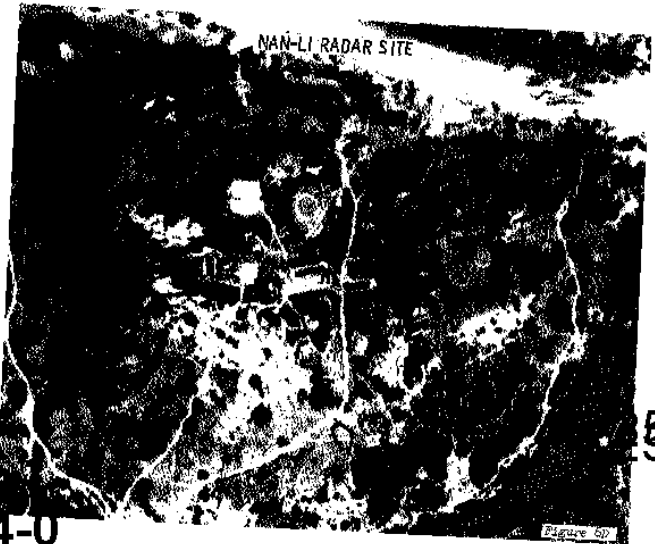
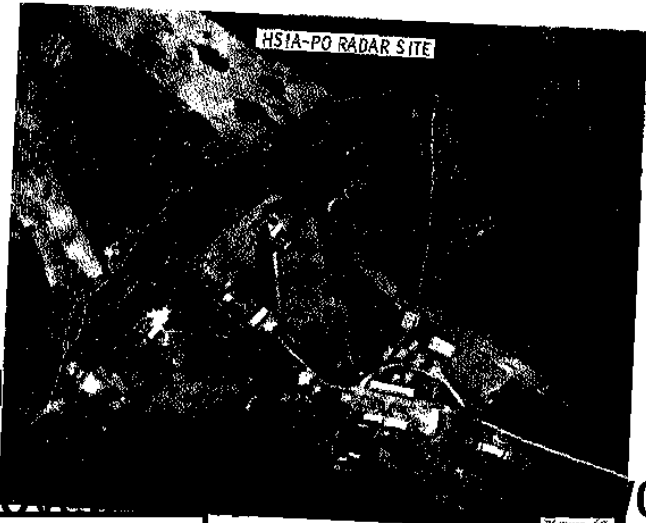


Figure 6C

Figure 6D

[Redacted] TOP SECRET

25X1 [Redacted] TOP SECRET

Approved
CIA-RDP

25X1

25X1

Approved

CIA-RDP02T06408R001200010034-0



TOP SECRET



CIA/PIR-67185

CIA IMAGERY ANALYSIS DIVISION

Figure 7

A possible electronics site is located 2 nm NE of Chang-Chiang at 19 20N-103 42E. The installation consists of three separate areas. Area A is located on top of a hill and contains 8 buildings. Area B is located on another hill 1.0 nm west of Area A and contains 8 buildings. Area C is located in a valley between Areas A and B and contains 11 barracks/support buildings.

A comparative analysis of photography of the installation cannot be made due to the lack of good quality coverage both before and after [redacted] No equipment is observed at Areas A, B, or C.

TOP SECRET



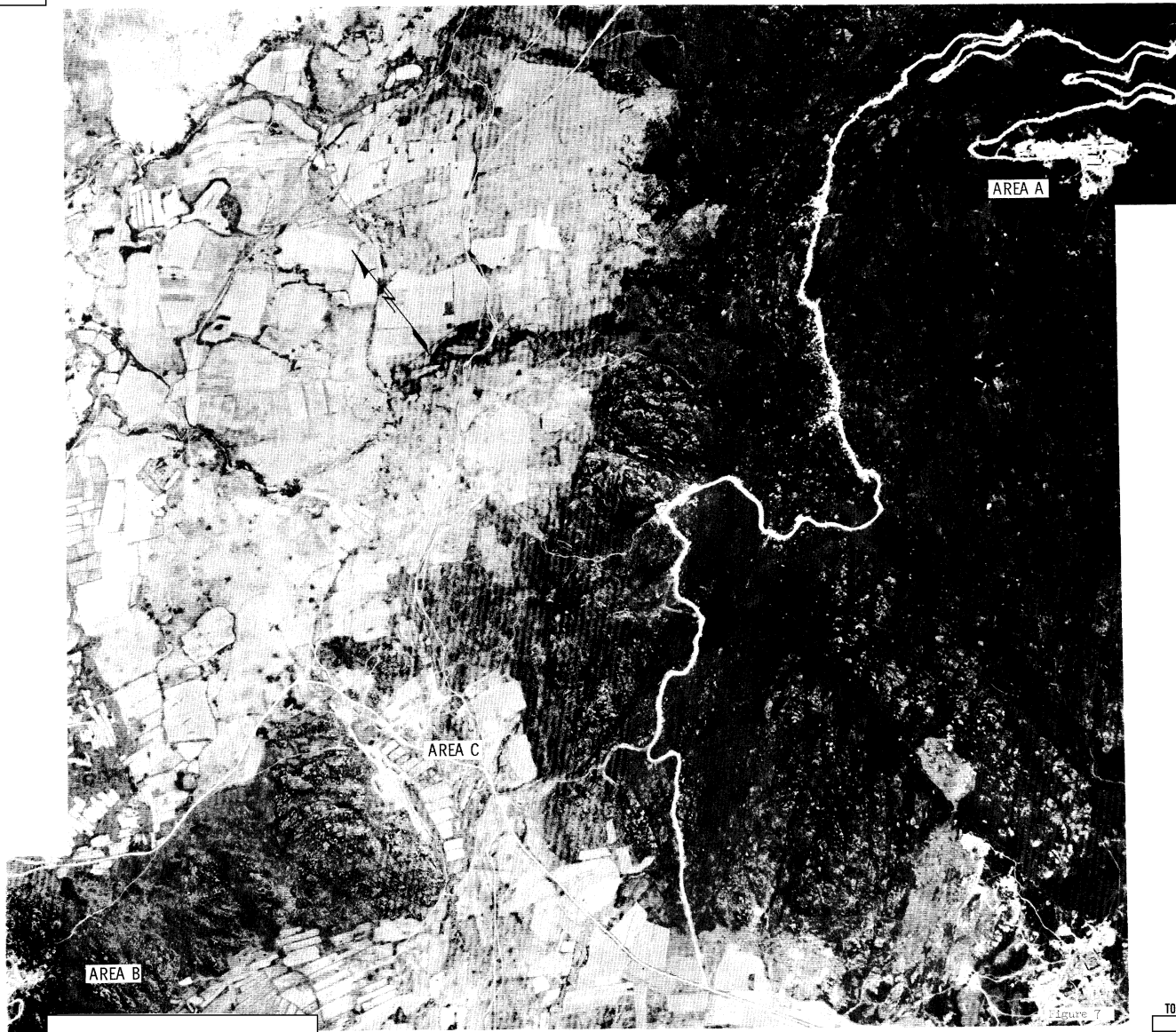
25X1
25X1

TOP SECRET

Approved For Release 2006/02/07 : CIA-RDP02T06408R001200010034-0
CHANG-CHIANG POSSIBLE ELECTRONICS SITE

CIA/PIR-67185

25X1



25X1

TOP SECRET

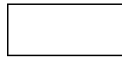
25X1
25X1

Approved For Release 2006/02/07 : CIA-RDP02T06408R001200010034-0

Approved For Release 2006/02/07 : CIA-RDP02T06408R001200010034-0

III. AIRFIELD

Approved For Release 2006/02/07 : CIA-RDP02T06408R001200010034-0



TOP SECRET

CIA/PIR-67185

CIA IMAGERY ANALYSIS DIVISION

III. Airfields

Figure 8

Yai-Hsien Airfield is located 3.7 nm NW of Yai-Hsien at 18 17N-109 27E. Facilities include a 4700 x 200 foot NE/SW concrete runway (serviceable) and a 3400 x 160 foot NW/SE concrete runway (probably unserviceable). The main runway has been partially patched with concrete. The touch-down areas have been patched to a width of 80 feet as well as the center portion of the south part of the runway. A dashed center line and a center marker have been painted in the center of the runway. The runway repairs and center markers were first observed on [redacted] photography. Other facilities include a WW II hangar framework, a support area with 3 probably abandoned barracks, 5 support buildings, a number of deteriorated aircraft parking revetments, and 4 probable ammunition bunkers which appear to be in use. No new activity is observed since [redacted]

TOP SECRET



25X1
25X1

TOP SECRET

Approved For Release 2006/02/07 : CIA-RDP02T06408R001200010034-0
YAI-HSIEN AIRFIELD

CTA/PIR-67185

25X1



25X1

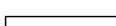
TOP SECRET

25X1
25X1

Approved For Release 2006/02/07 : CIA-RDP02T06408R001200010034-0



TOP SECRET

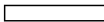


CIA/PIR-67185

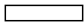
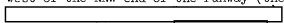

CIA IMAGERY ANALYSIS DIVISION

25X1
25X1

Figure 9A

Ling-Shui Airfield  is located 3 nm west of Ling-Shui at 18 30N-109 59E. Facilities consist of a 9380 x 195 foot NNW/SSE concrete runway with 600 foot extensions at each end, a parallel loop taxiway, 2 crossover links, 2 alert aprons, 3 parking aprons, 35 aircraft parking revetments, 24 vehicle revetments, a firing-in butt, one medium and one small hanger, an operations building and 50 support buildings, 3 small revetted ammunition storage buildings, and a POL storage area. Electronic facilities include 2 mobile GCA units, an ILS site, and a possible cross-slot radar site on a hill west of the runway.

The barracks area is located 0.5 nm west of the runway and contains 3 administration buildings, 28 multi-story barracks, 4 messhalls, and 7 storage/support buildings.

 photography reveals newly constructed 600 foot extensions added to each end of the runway, 4 newly constructed aircraft parking revetments, one small newly constructed hanger, and 2 storage areas (one POL) under construction 0.6 nm west of the NNW end of the runway (these facilities were not present on  construction on the 2 storage areas was continuing on  coverage (see Figure 9B).

25X1
25X1

Ling-Shui Airfield AAA Defenses

	<u>Coordinates</u>	<u>Number of Emplacements</u>	<u>Occupancy</u>
1.	18 27 28N-110 00 23E	4	4
2.	18 27 35N-109 58 32E	4	0
3.	18 27 52N-109 58 00E	4	4
4.	18 27 58N-109 59 32E	6	0
5.	18 28 40N-109 59 20E	6	0
6.	18 28 55N-109 59 25E	6	6
7.	18 28 57N-109 59 06E	6	0
8.	18 29 04N-110 00 00E	4	0
9.	18 29 10N-109 59 40E	6	0
10.	18 29 32N-110 00 17E	4	0
11.	18 29 37N-109 58 42E	6	6
12.	18 30 12N-109 59 15E	6	6
13.	18 30 14N-109 59 28E	6	0
14.	18 30 15N-109 58 28E	6	6
15.	18 30 42N-109 58 34E	6	0

TOP SECRET



25X1
25X1



TOP SECRET



CIA/PIR-67185

CIA IMAGERY ANALYSIS DIVISION

	<u>Coordinates</u>	<u>Number of Emplacements</u>	<u>Occupancy</u>
16.	18 30 42N-109 58 53E	6	0
17.	18 30 45N-109 58 08E	4	0
18.	18 30 52N-109 58 34E	6	6
19.	18 31 06N-109 57 50E	4	0
20.	18 31 09N-109 59 08E	6	0
21.	18 31 17N-109 59 52E	6	6
22.	18 31 22N-109 57 16E	6	6
23.	18 31 28N-109 57 46E	6	6
24.	18 31 48N-109 59 32E	4	4

Almost all of the AAA sites have been deployed since [redacted] photography revealed 4 AAA sites (numbers 7, 12, 14, 19) were present, 7 sites were cloud covered (numbers 1, 2, 5, 7, 8, 10, 19), and the rest were not yet emplaced. The remaining 13 sites have been deployed since [redacted]

TOP SECRET



25X1
25X1

TOP SECRET [redacted]

Approved For Release 2006/02/07 : CIA-RDP02T06408R001200010034-0

[redacted]
CIA/PIR-67185

25X1

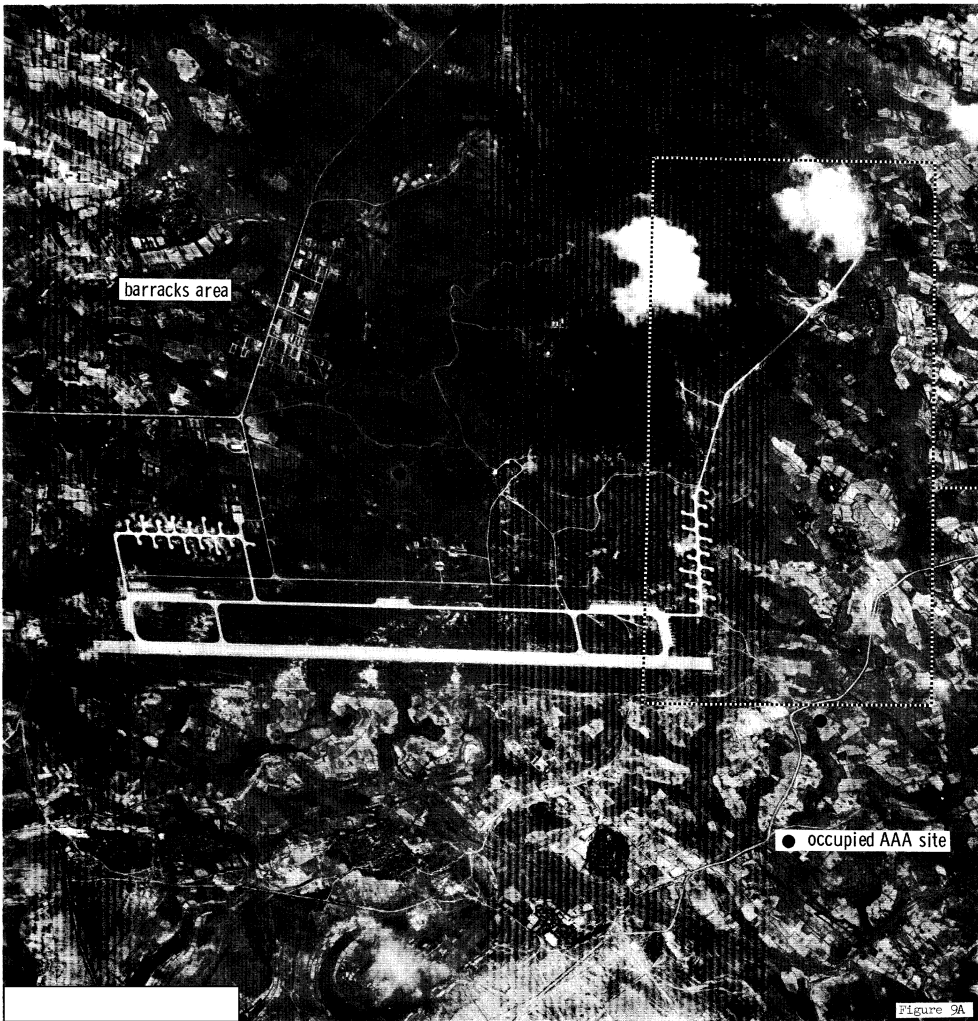


Figure 9A

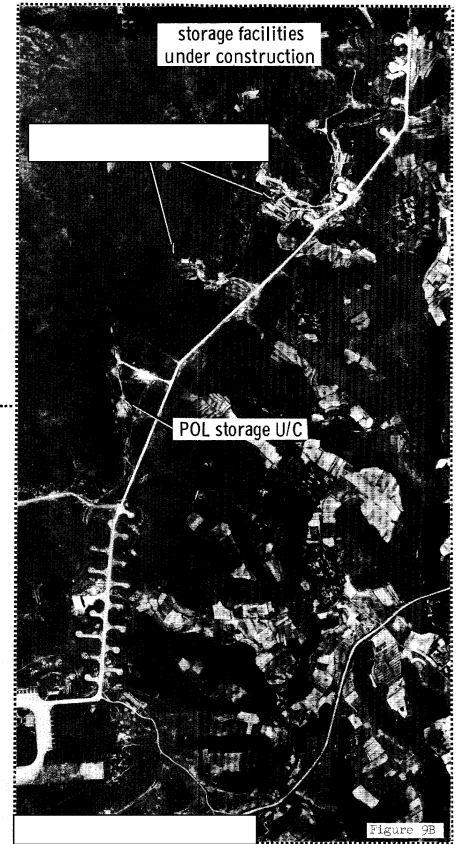


Figure 9B

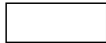
25X1

25X1

25X1

TOP SECRET [redacted]

25X1
25X1



TOP SECRET



CIA/EIR-67185

CIA IMAGERY ANALYSIS DIVISION

25X1
25X1

Figure 10

Hai-Kou Airfield is located 1.5 nm south of Hai-Kou at 20 01N-110 21E. Facilities include a 6600 x 200 foot E/W concrete runway (serviceable) with a 970' x 200' overrun on the east end of the runway and a 860' x 200' overrun on the west end of the runway, 2 cross-over and 2 end-connecting links, and a dispersal area north of and adjacent to the parallel taxiway with 20 revetted and one unrevetted hardstands. Seven other revetted hardstands are located SSW of the runway. A firing-in butt, 2 concrete alert aprons, 4 concrete parking aprons, 3 hangars, one operations building with control tower, one maintenance building, and 14 support buildings are located adjacent to the parking area. No significant change to the airfield and associated facilities is observed between coverage.

Hai-Kou Airfield AAA Defenses

	Coordinates	Number of Emplacements	Occupancy*
1.	20 01 10N-110 19 10E	6	6
2.	20 00 17N-110 19 35E	4	0
3.	20 01 32N-110 19 47E	6	5
4.	20 00 55N-110 19 50E	6	6
5.	20 01 09N-110 20 00E	6	6
6.	20 00 53N-110 20 06E	4	4
7.	20 01 56N-110 20 22E	4	3
8.	20 00 52N-110 20 26E	4	4
9.	20 00 52N-110 20 27E	4	0
10.	20 01 53N-110 20 38E	4	4
11.	20 01 06N-110 20 38E	4	0
12.	20 00 52N-110 20 42E	4	4
13.	20 01 35N-110 20 52E	6	5
14.	20 01 08N-110 21 13E	4	0
15.	20 01 20N-110 21 15E	4	4
16.	20 01 03N-110 21 22E	4	4

*Occupancy as of

Nine AAA sites were observed on photography with 7 sites occupied. The other 7 sites were deployed between and

25X1
25X1

TOP SECRET



25X1
25X1

TOP SECRET

CIA/PIR-67185

CIA IMAGERY ANALYSIS DIVISION

Barracks Area D is located north of the east end of the airfield and contains one administration building, 8 barracks, 6 quarters, 4 support buildings, and a wheeled-vehicle driver training area. No change to the facilities of the installation is observed between [redacted] coverage.

Another barracks area probably associated with the AAA defenses is located directly east of Area D. Facilities include one probable administration building, 8 barracks, 4 probable storage buildings, 5 probable vehicle sheds and 13 support buildings. Six cargo trucks are observed in the installation on [redacted] photography. No apparent change has occurred to the installation since [redacted].

Barracks Area E is located directly north of the airfield and probably serves as the housing area for the airfield. Facilities include 2 administration buildings, 38 barracks, 12 storage buildings, 5 explosives storage buildings (revetted), 9 probable vehicle sheds, approximately 55 support buildings, and a swimming pool. No significant change to the facilities is observed from [redacted] photography.

TOP SECRET

25X1
25X1

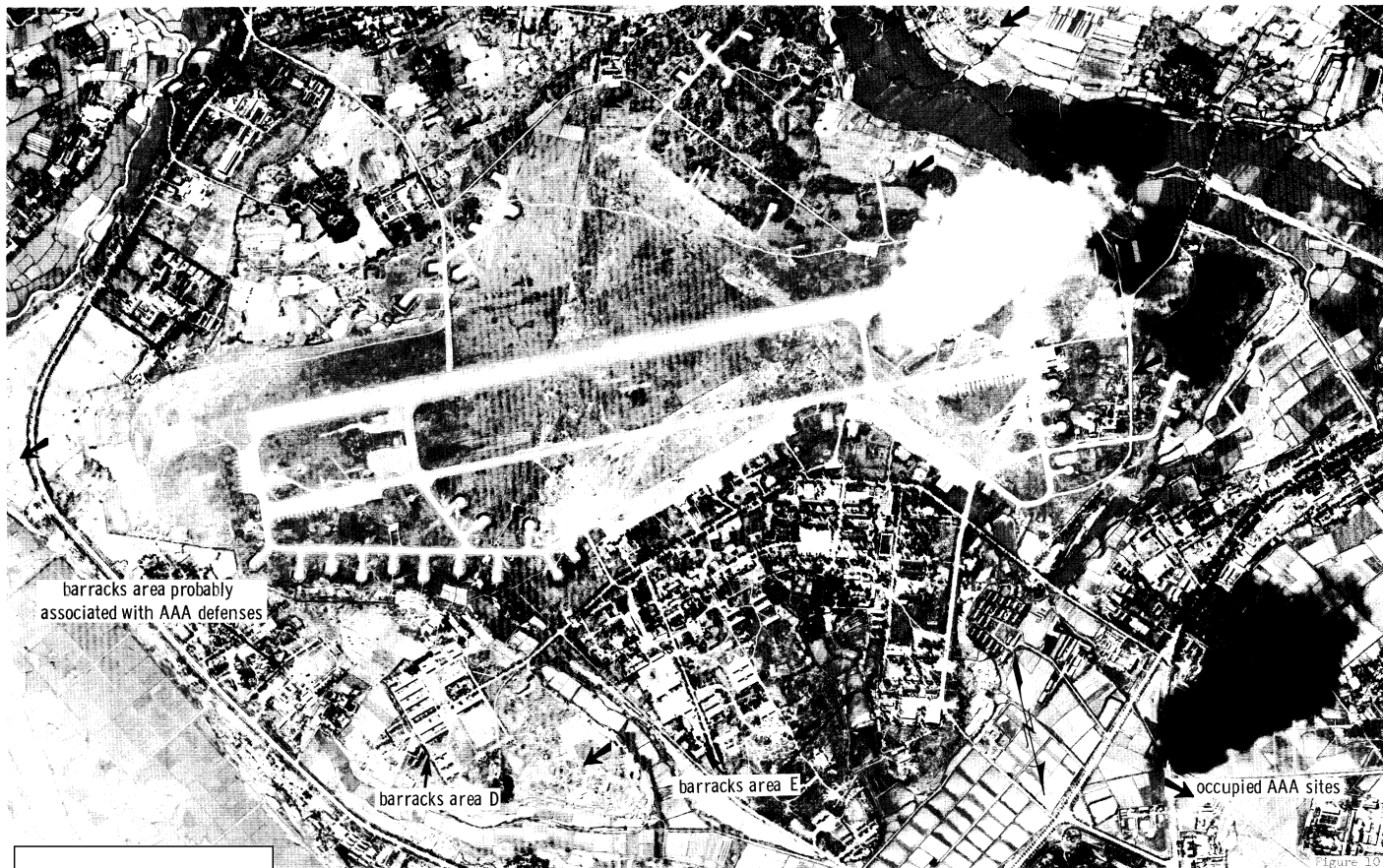
TOP SECRET

Approved For Release 2006/02/07 : CIA-RDP02T06408R001200010034-0

HAI-KOU AIRFIELD

CIA/PIR-67185

25X1



25X1

TOP SECRET

25X1
25X1

Approved For Release 2006/02/07 : CIA-RDP02T06408R001200010034-0

TOP SECRET

CIA IMAGERY ANALYSIS DIVISION

CIA/PIR-67185

25X1
25X1

Figure 11A

Chia-Lai-Shih Airfield is located 2.5 nm SE of Chia-Lai-Shih at 19 42N-109 44E. The airfield consists of an 8200 x 165 foot NW/SE concrete runway constructed on the site of an old abandoned airfield. The runway was observed under construction on photography. The runway was 6655 x 100 foot on the coverage with construction continuing on the runway, crossover links, and parallel taxiway. On photography the airfield appeared completed. Facilities included an 8200 x 100 foot concrete runway, 2 crossover links, 2 end links, and 2 parking aprons. Six aircraft parking revetments on the NW end of the airfield were completed and 6 parking revetments on the SE end of the runway were under construction.

25X1
25X1

Figure 11A

Photography of revealed that a 65 foot wide strip had been added to the runway width since Construction appears completed on the SE aircraft parking revetments.

25X1

Other facilities at the airfield include 20 large and 30 small support buildings located immediately west of the runway, and 19 probable quarters and 3 support buildings located 0.5 nm east of the runway.

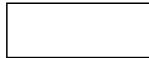
Chia-Lai-Shih Airfield AAA Defenses

	<u>Coordinates</u>	<u>Number of Emplacements</u>	<u>Occupancy*</u>
1.	19 41 20N-109 31 10E	6	0
2.	19 41 30N-109 43 40E	4	4
3.	19 41 30N-109 43 30E	4	0
4.	19 41 30N-109 42 10E	6	6 poss. occupied
5.	19 41 40N-109 42 50E	6	6
6.	19 41 50N-109 43 50E	4	4
7.	19 41 50N-109 43 10E	4	4
8.	19 41 50N-109 42 30E	6	6
9.	19 41 50N-109 42 10E	3	0
10.	19 42 10N-109 42 30E	6	0
11.	19 42 20N-109 44 10E	4	0
12.	19 42 20N-109 42 40E	6	6
13.	19 42 20N-109 42 20E	6	6
14.	19 42 30N-109 42 30E	6	0
15.	19 42 30N-109 43 30E	6	6 poss. occupied

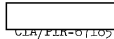
*Occupancy as of

TOP SECRET

25X1
25X1



TOP SECRET



CIA IMAGERY ANALYSIS DIVISION

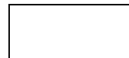
CLASIFIED

	<u>Coordinates</u>	<u>Number of Emplacements</u>	<u>Occupancy*</u>
16.	19 42 30N-109 43 00E	6	6
17.	19 42 40N-109 43 20E	6	0
18.	19 42 50N-109 42 20E	6	0
19.	19 43 00N-109 42 40E	6	6
20.	19 43 10N-109 43 20E	6	0

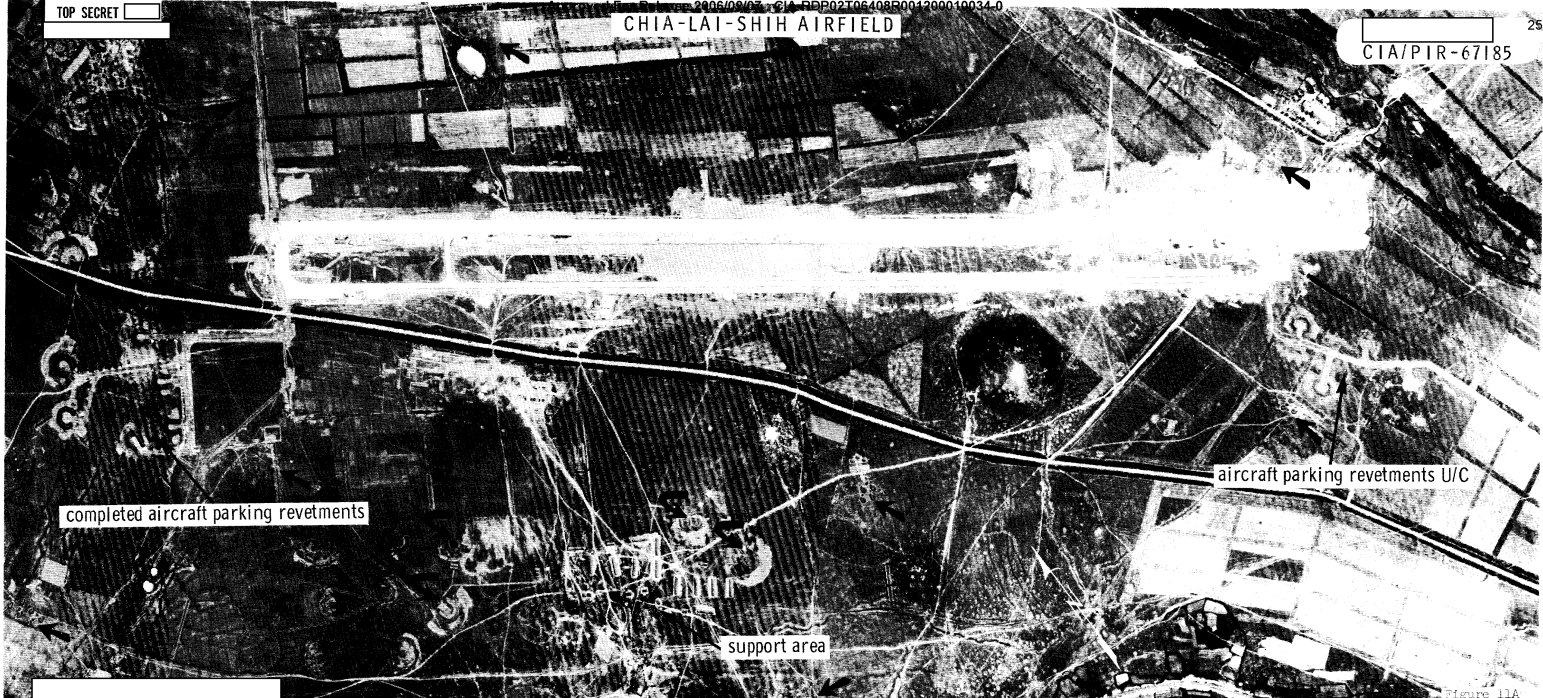
*Occupancy as of

The AAA defenses were deployed between

TOP SECRET

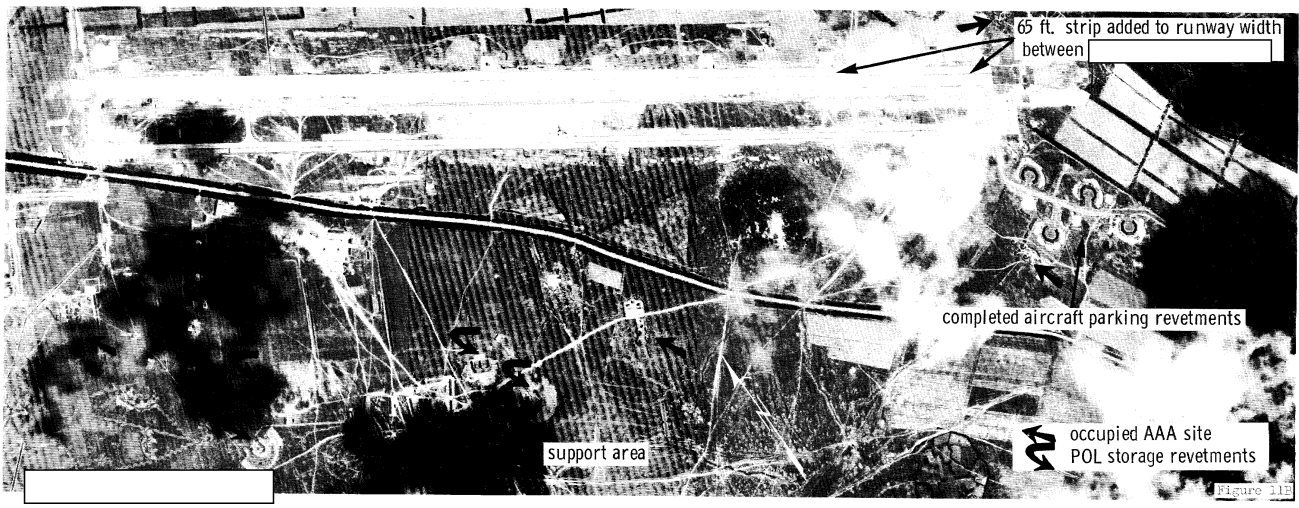


25X1
25X1



25X1

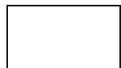
25X1



25X1

25X1

TOP SECRET []



TOP SECRET

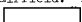


CIA IMAGERY ANALYSIS DIVISION

CIA/PIR-6/185

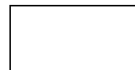
25X1
25X1

Figure 12

Fo-Lo Airfield is located 7 nm SE of Fo-Lo at 18 30N-109 27E. Facilities include a 4900 x 225 foot *NW/SW* concrete runway (partially deteriorated) and a 3900 x 225 foot *NW/SE* concrete runway (deteriorated). At least 36 deteriorated revetments are associated with the airfield. No change or activity has been observed at the airfield since  photography.

25X1

TOP SECRET



25X1
25X1

25X1
25X1

TOP SECRET []

Approved For Release 2006/02/07 : CIA-RDP02T06408R001200010034-0

[]
CIA/PIR-67185

25X1

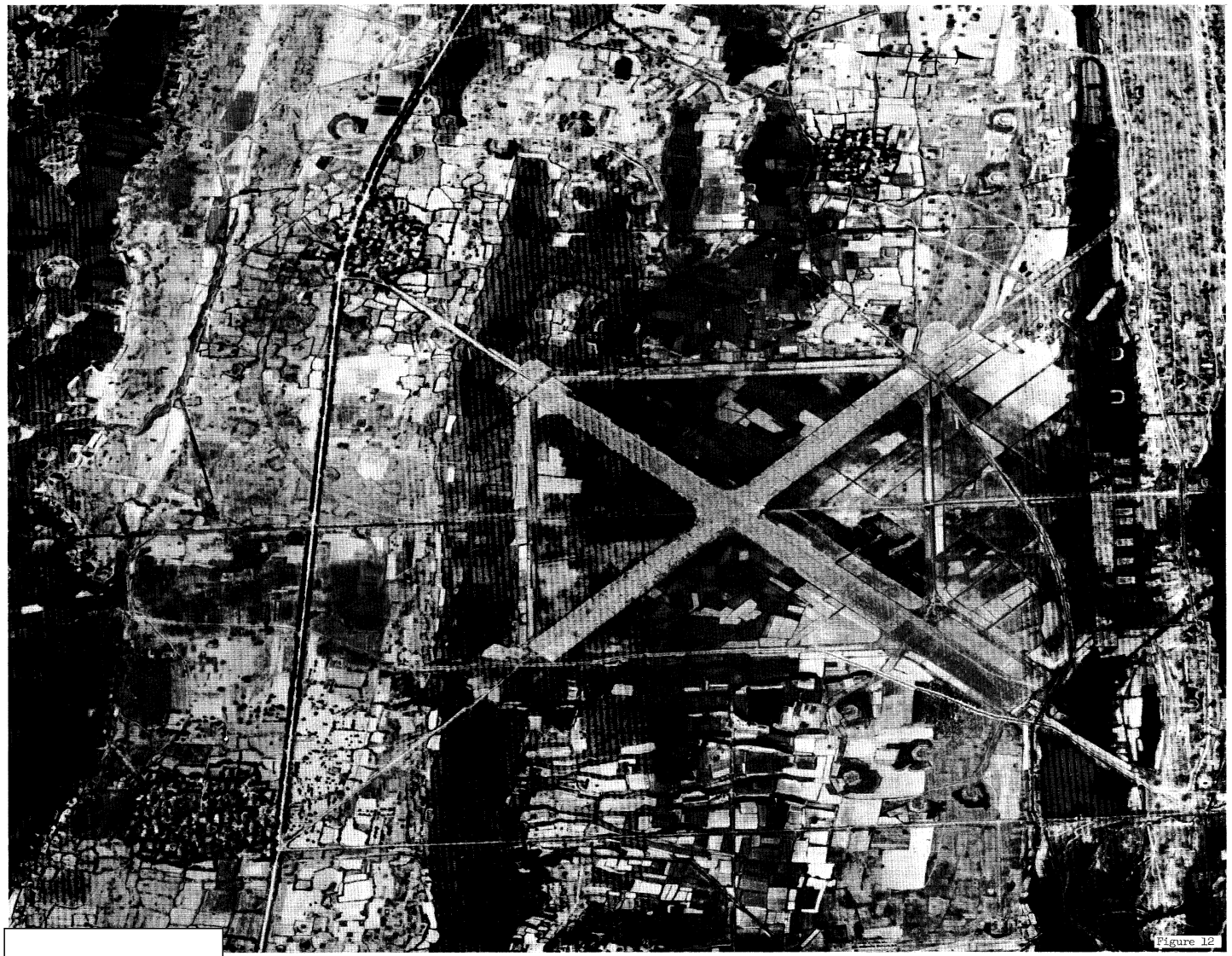


Figure 12

25X1

[]

25X1
25X1

TOP SECRET []

Approved For Release 2006/02/07 : CIA-RDP02T06408R001200010034-0

[] TOP SECRET []

[]
CIA/PIR-67185

CIA IMAGERY ANALYSIS DIVISION

IV. Ports and Naval Facilities

Figure 13A

Yu-Lin Port and Naval Base is located at the mouth of the Yu-Lin estuary at 18 13N-109 32E.

Figure 13B

Yu-Lin Naval Base is located on the SE edge of Yu-Lin and consists of a quay, a pontoon wharf, 3 shipways, a naval headquarters building, 7 barracks, 3 revetted storage buildings, 2 shops, one vehicle shed, and 22 support buildings. Four adits in the hill directly south of the base are probably associated with the storage facilities. Four vehicles/pieces of equipment are observed in the vehicle park. No change in facilities is observed between []

Figure 13C

Yu-Lin Naval Shipyard is located on the east edge of Yu-Lin and consists of 2 marine railways, 10 shipways, one floating shearlegs, and 3 shops. Naval vessels also utilize the quay located directly north of the shipyard. The probable support area contains 2 administration buildings, 10 barracks, 4 probable storage buildings, one messhall, 14 support buildings, and 3 basketball courts. One large crane and 2 other pieces of equipment are observed on the quay on [] photography. The large shop adjacent to the slipways was under construction on [] coverage.

Ten unidentified crates are observed by the pier at the port facilities on [] photography. These crates were not observed on [] coverage.

Some of the barracks and quarters in the Yu-Lin area are probably associated with the Yu-Lin AAA and coastal defense sites. However, the lack of security measures and "typical" barracks patterns precludes a firm identification of the defense support areas.

TOP SECRET [] []

Approved For Release 2006/02/07 : CIA-RDP02T06408R001200010034-0

REF ID: A66666
SERIALS AND DATA
FACILITIES

Approved For Release 2006/02/07 : CIA-RDP02T06408R001200010034-0

25X1
25X1

TOP SECRET

Approved For Release 2006/02/07 : CIA-RDP02T06408R001200010034-0
YU-LIN PORT AND NAVAL FACILITIES

CIA/PIR-67185

25X1



25X1

TOP SECRET 25X1
25X1

Approved For Release 2006/02/07 : CIA-RDP02T06408R001200010034-0



TOP SECRET



CIA/PIR-6/185

CIA IMAGERY ANALYSIS DIVISION

Figure 14

Ya-Lung Suspect Naval Base is located approximately 9.5 nm east of Yu-Lin at 18 13N-109 41E. Facilities include one T-head pier, 16 probable barracks, approximately 15 storage buildings, approximately 5 vehicle sheds, approximately 30 support buildings, and a POL storage area containing at least 18 buried horizontal tanks.

On [redacted] these 18 horizontal tanks were being placed in the excavations and the 6 position AAA site was under construction. Approximately 25 new storage buildings, vehicle sheds, and support buildings were added between [redacted]

Ya-Lung Suspect Naval Base AAA Defenses

<u>Coordinates</u>	<u>Number of Emplacement</u>	<u>Occupancy*</u>
1. 18 13 00N-109 41 35E	4	4
2. 18 13 00N-109 41 50E	6	6
3. 18 13 35N-109 41 55E	4	4

*Occupancy as of [redacted]

TOP SECRET



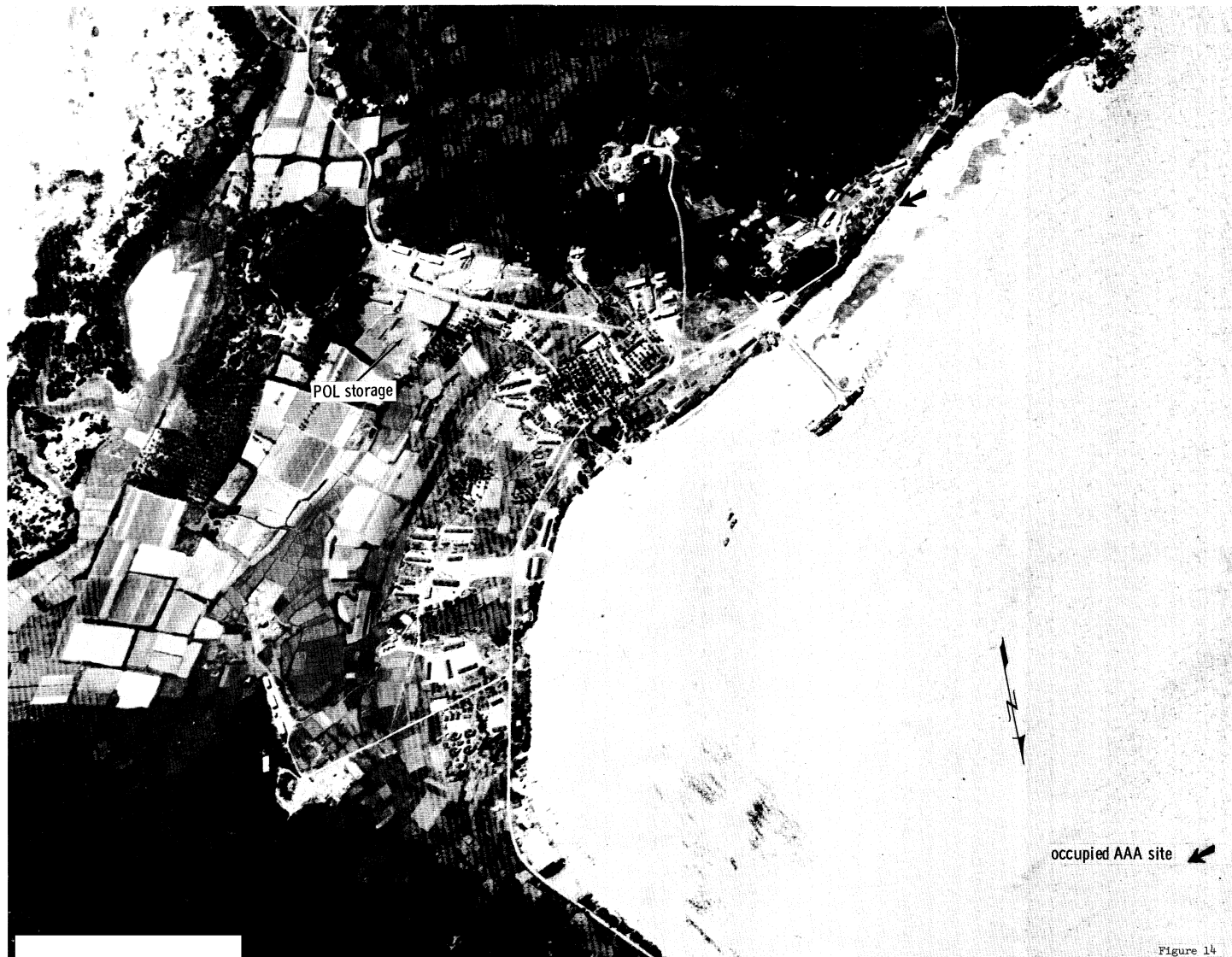
25X1
25X1

TOP SECRET [redacted]

Approved For Release 2006/02/07 : CIA-RDP02T06408R001200010034-0
YA-LUNG SUSPECT NAVAL BASE

[redacted]
CIA/PIR-67185

25X1



25X1

[redacted]

Figure 14

TOP SECRET [redacted]

25X1
25X1

Approved For Release 2006/02/07 : CIA-RDP02T06408R001200010034-0

25X1
25X1

TOP SECRET

Approved For Release 2006/02/07 : CIA-RDP02T06408R001200010034-0
CHING-LAN CHIANG MOTOR TORPEDO BOAT BASE

CIA/PTR-67185

25X1



25X1

TOP SECRET

25X1
25X1

Approved For Release 2006/02/07 : CIA-RDP02T06408R001200010034-0

[Redacted] TOP SECRET [Redacted] [Redacted]
CIA/PIR-67185
CIA IMAGERY ANALYSIS DIVISION

Figure 16

Hai-Kou Port and Naval Base is located at Shu-Chang (20 01 30N-110 16 10E). Facilities consist of 2 breakwaters, one quay, one T-head pier, 5 administration buildings, 35 barracks, 4 warehouses, 15 storage buildings, 40 support buildings, and one messhall. One administration building was added between [Redacted]

Hai-Kou Port and Naval Base AAA Defenses

	<u>Coordinates</u>	<u>Number of Emplacements</u>	<u>Occupancy*</u>
1.	20 01 22N-110 15 35E	6	6
2.	20 01 32N-110 15 40E	6	0
3.	20 01 20N-110 15 41E	4	0
4.	20 01 11N-110 15 58E	6	6
5.	20 01 02N-110 16 35E	6	6
6.	20 01 27N-110 16 38E	4	0

*Occupancy as of [Redacted]

All AAA sites were deployed between [Redacted]

TOP SECRET [Redacted] [Redacted]

25X1
25X1

TOP SECRET []

Approved For Release 2006/02/07 : CIA-RDP02T06408R001200010034-0
HAI-KOU PORT AND NAVAL BASE

[]
CIA/PIR-67185

25X1

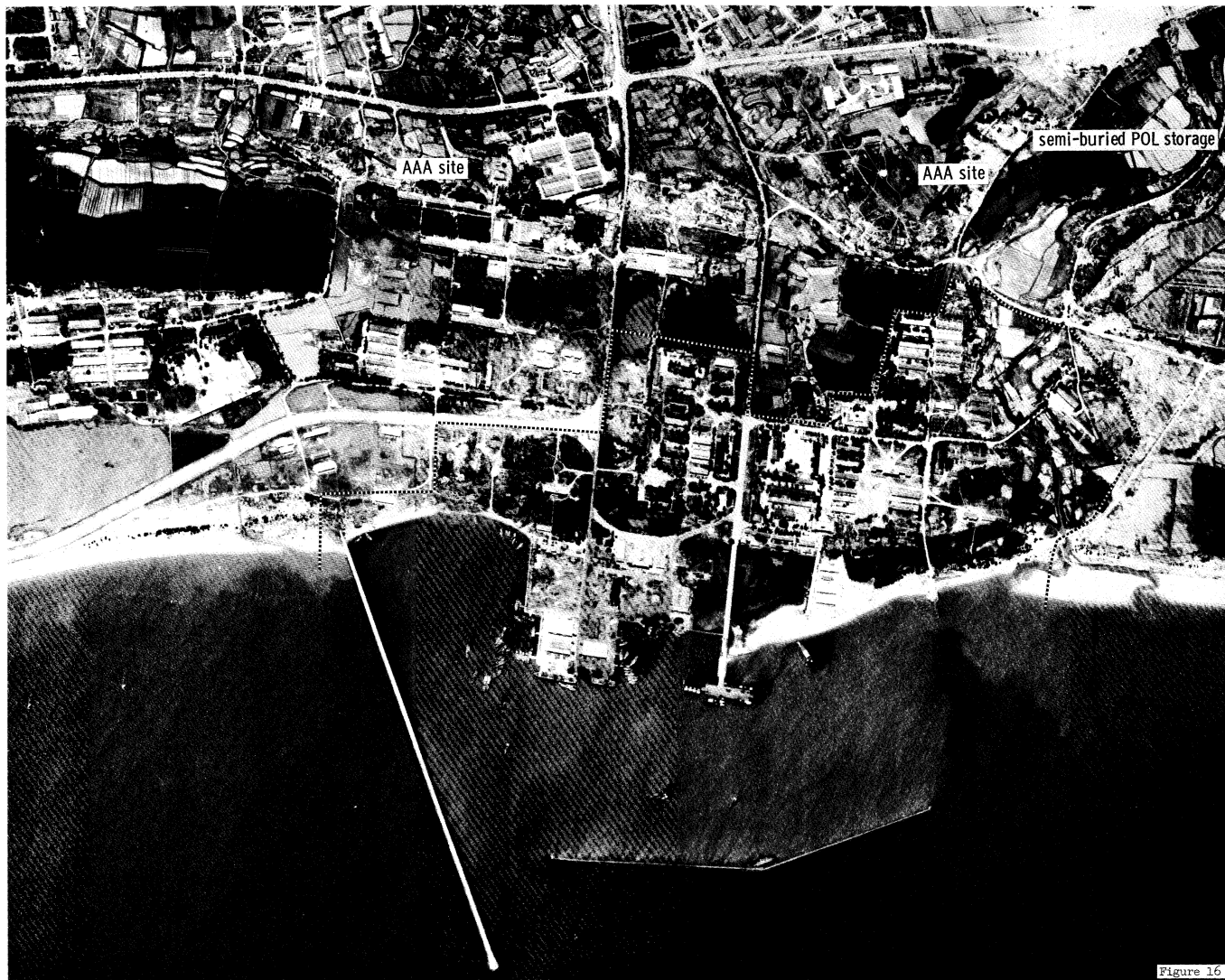


Figure 16

25X1

[]

TOP SECRET []

25X1
25X1

Approved For Release 2006/02/07 : CIA-RDP02T06408R001200010034-0

Approved For Release 2006/02/07 : CIA-RDP02T06408R001200010034-0

SMOLLETT/USNS
IN
ARGLIN

Approved For Release 2006/02/07 : CIA-RDP02T06408R001200010034-0

[REDACTED] TOP SECRET [REDACTED]

[REDACTED] CIA/PIR-67185

CIA IMAGERY ANALYSIS DIVISION

V. Military Installations

Barracks areas associated with other types of activity are described under the activity heading (Radar Sites, Airfields, Naval Bases).

Figure 17A

Area A is located 0.7 nm north of Yai-Hsien at 18 15N-109 29E. Facilities include one administration building, 5 barracks, 2 vehicle sheds, and 5 support buildings. This installation appears to service an 8 emplacement AAA site located at the north edge of the installation. No change in facilities is observed between [REDACTED] coverage.

Figure 17B

Area B is located 3 nm NW of Yai-Hsien at 18 16N-109 28E. Facilities include 4 probable barracks, 3 possible explosives storage buildings, a vehicle shed, and 7 support buildings. Four PA pieces are observed on [REDACTED] coverage. No change in facilities is observed between [REDACTED]

Figure 17C

Area C is located 0.3 nm west of Yai-Hsien at 18 14N-109 30E. Facilities include one administration building, 11 barracks, 8 support buildings, and a probable meteorological station. No change in facilities is observed between [REDACTED]

Figure 17D

A probable barracks area is located 0.7 nm west of Yu-Lin at 18 13N-109 30E. Facilities include 10 probable barracks and 2 probable vehicle sheds. This area appears to be the support center for the 8 gun AAA site. No change in facilities is observed between the [REDACTED]

TOP SECRET [REDACTED] [REDACTED]

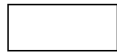
TOP SECRET []

MILITARY INSTALLATIONS - YAI-HSIEN AND YU-LIN AREA


[]
CIA/PIR-67185



TOP SECRET []

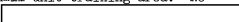


TOP SECRET 


CIA/PIR-67185

CIA IMAGERY ANALYSIS DIVISION

Figure 18

Yai-Hsien Army Barracks NE is located at 18 19N-109 31E and contains 2 administration buildings, 40 barracks, 8 probable storage buildings, 4 probable vehicle sheds, and 20 support buildings. Training facilities include a small arms firing range and a small unit training area. No changes to the facilities are observed on  photography.

TOP SECRET 



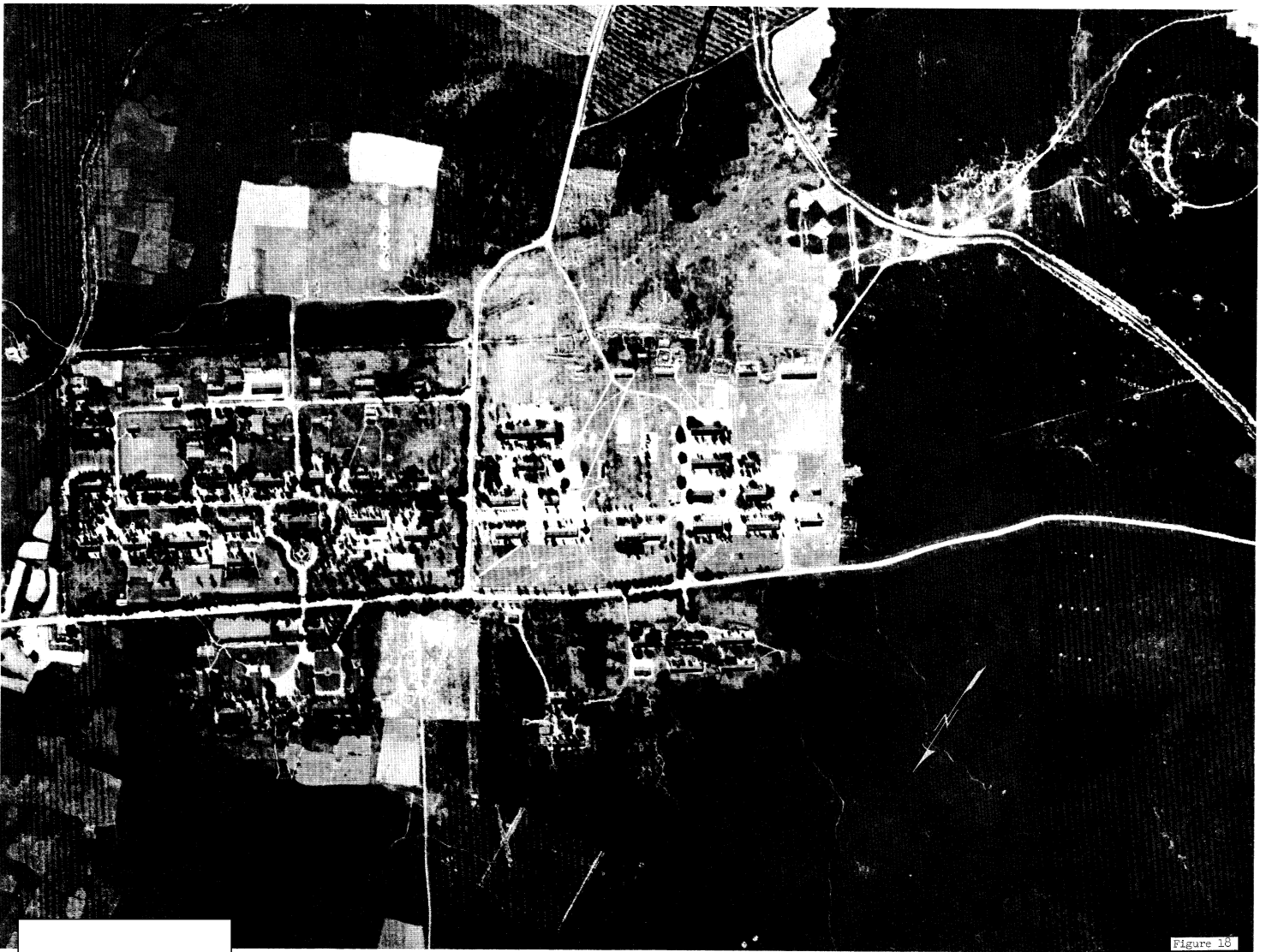
25X1
25X1

TOP SECRET [redacted]

Approved For Release 2006/02/07 : CIA-RDP02T06408R001200010034-0

[redacted]
CIA/PTR-67185

25X1



25X1

[redacted]

Figure 13

TOP SECRET [redacted]

25X1
25X1

[REDACTED] TOP SECRET [REDACTED]

CIA IMAGERY ANALYSIS DIVISION

CIA/PIR-67185

A military complex comprised of three areas (A, B and C) is located 8.5 nm NE of Yu-Lin at 18 20N-109 37E.

Figure 19A

Area A contains one administration building, 12 barracks, 8 probable storage buildings, 3 vehicle sheds, one messhall, and approximately 20 support buildings. No change in the installation is observed between [REDACTED]

Figure 19B

Area B is located 0.8 nm south of Area A and contains one administration building, 20 barracks, 15 storage buildings, 3 possible explosives storage buildings, 3 messhalls, and 12 support buildings. No change to the facilities is observed from [REDACTED]

Figure 19C

Area C is located 1.6 nm south of Area A and contains one administration building, 6 barracks, 5 other barracks with combined messhalls, 4 probable quarters, 4 storage buildings, 8 support buildings, 2 possible basketball courts, and an obstacle course and small-arms firing range across the road. No change to the installation has occurred between [REDACTED]

Figure 19D

Yu-Lin Army Barracks north is located 4 nm NNE of Yu-Lin at 18 17N-109 33E. Facilities include one administration building, 6 barracks, 5 storage buildings, a vehicle park, one messhall, and 14 support buildings. Twenty-six cargo trucks were observed at the vehicle park on [REDACTED] photography and 24 were observed on [REDACTED] photography. No change in the facilities is observed from [REDACTED] coverage.

TOP SECRET [REDACTED] [REDACTED]

25X1
25X1

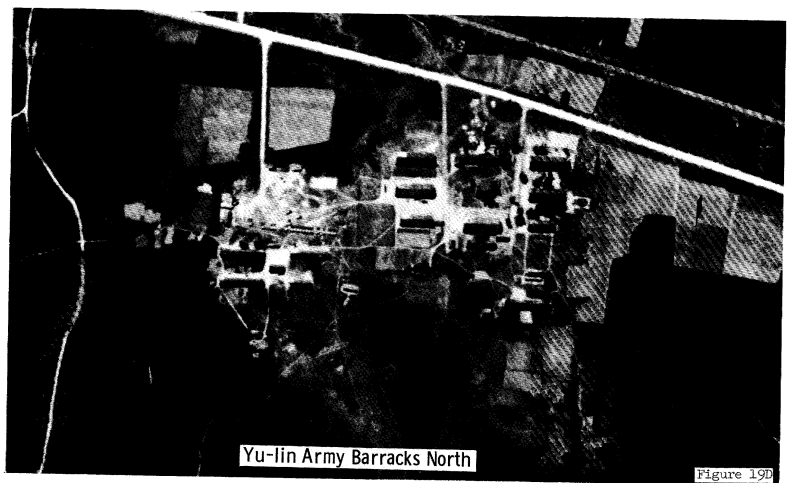
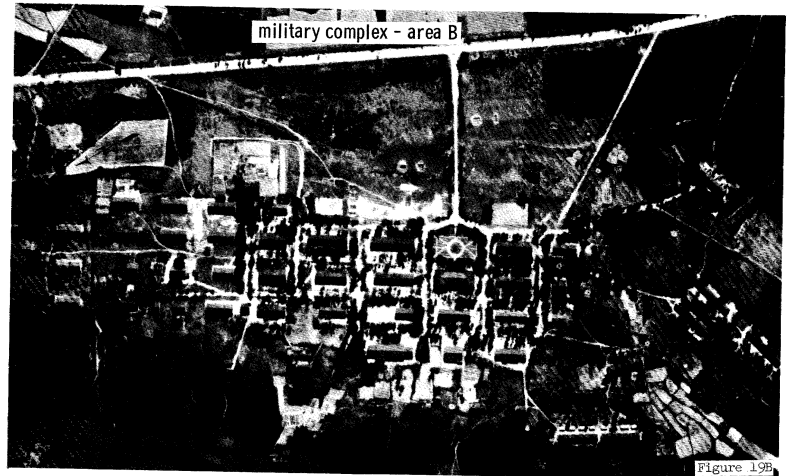
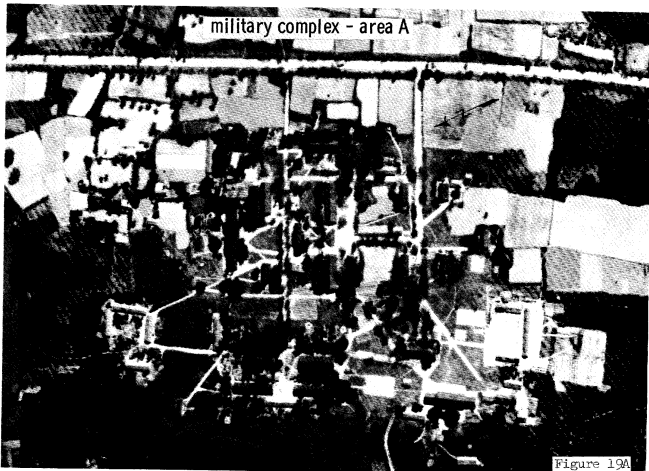
TOP SECRET

Approved For Release 2006/02/07 : CIA-RDP02T06408R001200010034-0

BARRACKS AREAS - VICINITY OF YU-LIN

CIA/PIR-67185

25X1



25X1

TOP SECRET

Approved For Release 2006/02/07 : CIA-RDP02T06408R001200010034-0

25X1
25X1

[REDACTED] TOP SECRET [REDACTED]

[REDACTED] CIA/PIR-67185

CIA IMAGERY ANALYSIS DIVISION

Figure 20

A wheeled-vehicle driver training course is located approximately one nm south of Yu-Lin Army Barracks North. Four trucks were observed on the course on [REDACTED] photography. Two associated storage/vehicle parks are located adjacent to the course.

The east area contains 6 barracks, 6 vehicle sheds, one probable maintenance building, and 5 support buildings. Three vehicle sheds and the maintenance building have been constructed since [REDACTED].

The west area contains one possible administration building, 2 probable barracks, 6 probable storage buildings, 2 vehicle sheds, one probable maintenance building, and 4 support buildings. The 2 barracks and 3 storage buildings were observed on [REDACTED] and all other buildings were under construction. Two other vehicle sheds observed on the [REDACTED] coverage have since been razed.

TOP SECRET [REDACTED] [REDACTED]

25X4
25X1

TOP SECRET

Approved For Release 2006/02/07 : CIA-RDP02T06408R001200010034-0

YU-LIN ARMY BARRACKS NORTH DRIVER TRAINING
AND ASSOCIATED STORAGE/VEHICLE PARKS

CIA/PIR-67185

25X1



4 trucks on driver training course

east area

west area

Figure 20

25X1
25X1

TOP SECRET



TOP SECRET



CIA/PTR-67185

CIA IMAGERY ANALYSIS DIVISION

Figure 21A

A barracks area is under construction 3 nm SSW of Teng-Chiao-Shih at 18 22N-109 41E. Facilities include one possible administration building, 4 barracks, 5 probable storage buildings, 4 vehicle/equipment sheds, and 9 support buildings. Three FA pieces are observed on [redacted] coverage. The vehicle sheds, 2 probable storage buildings, and 5 support buildings have been added since [redacted]

Figure 21B

A probable barracks area under construction is located 2 nm NW of Teng-Chiao-Shih at 18 25N-109 43E. Facilities include 2 administration buildings, 16 barracks, 19 barracks/storage buildings, 4 probable vehicle sheds, one probable vehicle maintenance building, 2 messhalls, one auditorium under construction, 22 support buildings, and a basketball court. A small training area and a probable cave for storage are located immediately east of the barracks area. Comparative analysis reveals that one administration building, 6 barracks, 19 barracks/storage buildings, one messhall, 2 vehicle sheds, and 6 support buildings have been completed since [redacted] coverage. The training area and probable cave have been added since [redacted] and construction is progressing on the auditorium on [redacted] photography.

TOP SECRET



25X1
25X1

TOP SECRET

MILITARY AREAS U/C - VICINITY OF TENG-CHIAU-SHIH

CIA/PIR-67185

25X1



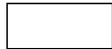
25X1

TOP SECRET

25X1

25X1

25X1




TOP SECRET 


CIA/PIR-67185

CIA IMAGERY ANALYSIS DIVISION

Figure 22

A possible barracks area is located on the SW edge of Ling-Shui at 18 31N-110 02E. Facilities include one possible administration building, 30 possible barracks, 6 storage buildings, 4 possible vehicle sheds, and approximately 40 support buildings. No apparent change to the facilities occurred between photography of 

TOP SECRET 



25X1

TOP SECRET [redacted]

Approved For Release 2006/02/07 : CIA-RDP02T06408R001200010034-0

[redacted]
CIA/PIR-67185

25X1

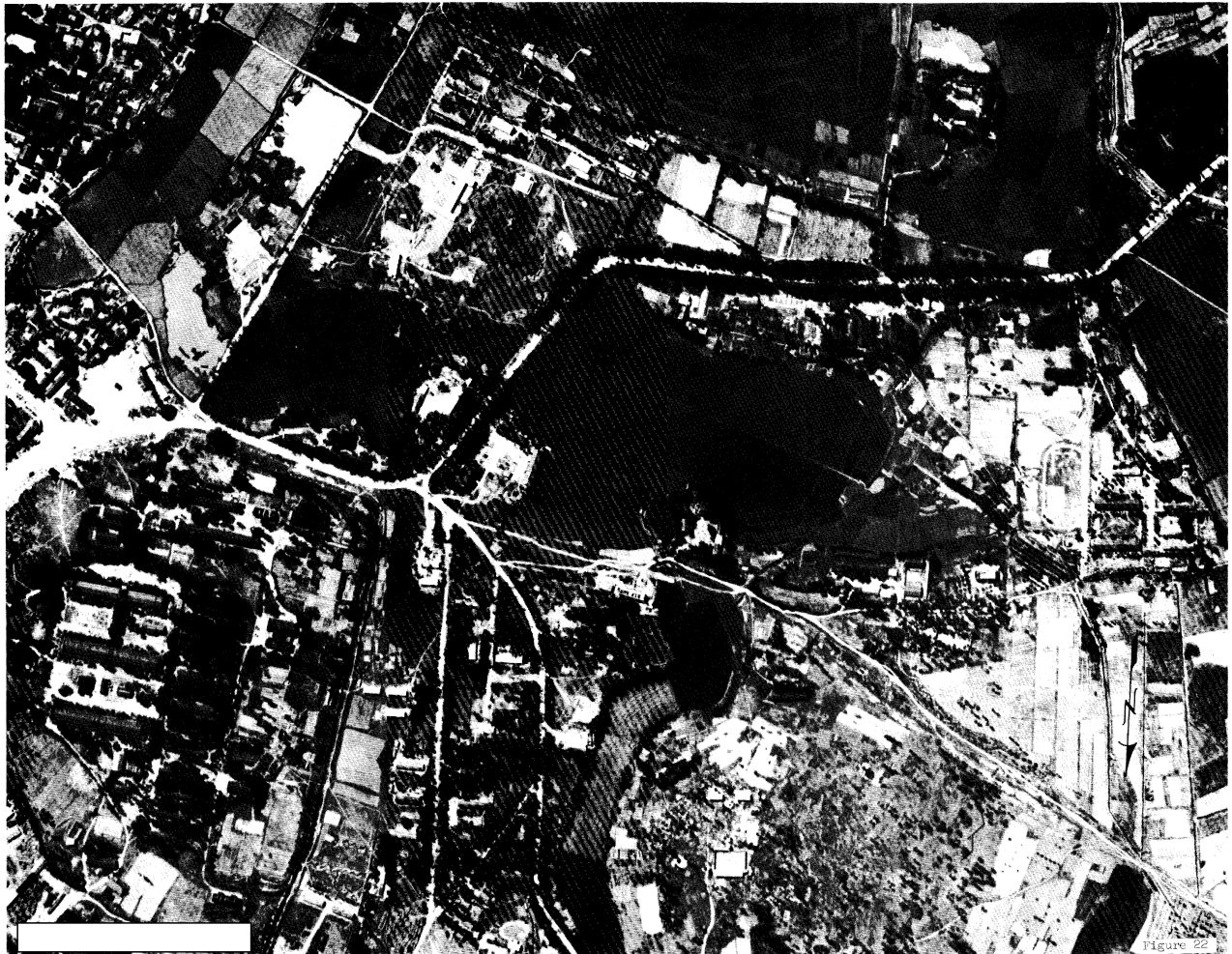


Figure 22

25X1

TOP SECRET [redacted]

25X1
25X1

[] TOP SECRET []

[] CIA/PIR-67185

CIA IMAGERY ANALYSIS DIVISION

Figure 22A

A barracks complex consisting of three areas (A, B and C) is located 2.5 nm SW of Ling-Shui at 18 28N-110 00E.

Area A (18 28N-110 00E) contains one administration building, 5 barracks, one messhall, 3 support buildings, and an athletic field. A probable storage area containing 5 probable storage buildings and 3 support buildings is located immediately south of Area A. Directly west of Area A are 2 revetted storage buildings and 3 other support buildings.

Area B (18 28N-109 59E) is located immediately SW of Area A and contains one administration building, one probable barracks, 4 probable vehicle sheds, a probable vehicle maintenance building, and 6 support buildings.

Area C (18 28N-109 59E) is located 0.6 nm SW of Area A and contains one probable administration building, 8 barracks, 6 probable storage buildings, 4 support buildings, and a possible athletic field.

Comparative analysis of missions dated between [] reveals no changes to Areas A and C. However, Area B was first observed on [] photography. The complex may be associated with the AAA defenses in the area.

Figure 22B

A barracks area is located 12 nm NE of Ling-Shui at 18 41N-110 09E. Facilities on the NW side of the road include 10 storage buildings, 6 probable vehicle sheds, one probable maintenance building, and 5 support buildings. The main barracks area on the SE side of the road includes 2 administration buildings, 18 barracks, 6 storage buildings, 4 probable vehicle sheds, one messhall, and 10 support buildings.

Comparative analysis of photography reveals that 2 new probable vehicle sheds were constructed between []

TOP SECRET [] []

25X1

TOP SECRET [redacted]

Approved For Release 2006/02/07 : CIA-RDP02T06408R001200010034-0
LING-SHUI BARRACKS COMPLEX

[redacted]
CIA/PIR-67185

25X1

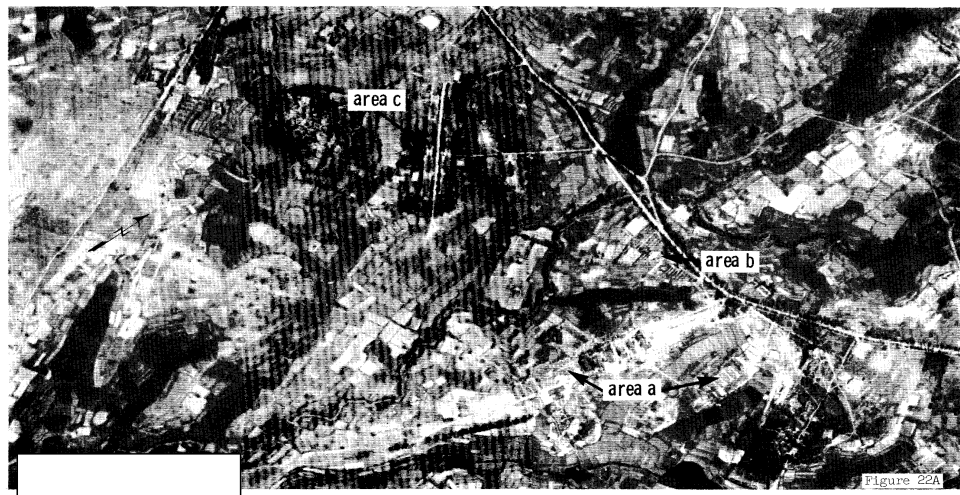


Figure 22A

25X1

LING-SHUI BARRACKS AREA

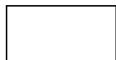


Figure 22B

25X1

TOP SECRET [redacted]

25X1
25X1



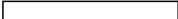
TOP SECRET



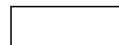
CIA/PTR-67185

CIA IMAGERY ANALYSIS DIVISION

Figure 23

A barracks area is located 1.0 nm north of Shui-Yeh at 18 54N-110 28E. Facilities include one administration building, 11 probable barracks, 2 support buildings, and an athletic field. A possibly associated barracks area located 0.4 nm SE contains one probable administration building, 4 probable barracks, 2 possible vehicle sheds, and 5 support buildings. Both areas appear moderately active with no changes in facilities observed between 

TOP SECRET



25X1
25X1

TOP SECRET

Approved For Release 2006/02/07 : CIA-RDP02T06408R001200010034-0

SHUI-YEH BARRACKS AREAS

CIA/PIR-67185

25X1

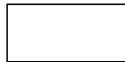


25X1

TOP SECRET

25X1
25X1

Approved For Release 2006/02/07 : CIA-RDP02T06408R001200010034-0



TOP SECRET



CIA/PIR-67185

CIA IMAGERY ANALYSIS DIVISION

Three military installations (A, B and C) are located in the vicinity of Lo-Cheng (19 08N-110 31E).

Figure 24A

Area A is located 3 nm west of Chih-Wu-Tsun (19 09N-110 28E) and contains one probable administration building, 16 barracks, 6 support buildings, an athletic field, and a possible swimming pool. A large administration building adjacent to the south side of the installation may be associated with the barracks area.

Figure 24B

Area B is located 4 nm south of Lo-Cheng at 19 04N-110 30E and contains 6 barracks, 6 support buildings, and a probable tracked-vehicle driver training area.

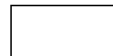
Figure 24C

Area C is located 5 nm south of Lo-Cheng at 19 03N-110 30E and contains 6 barracks, a probable vehicle shed, 5 support buildings and an athletic field.

All areas appear moderately active. No changes are observed between



TOP SECRET



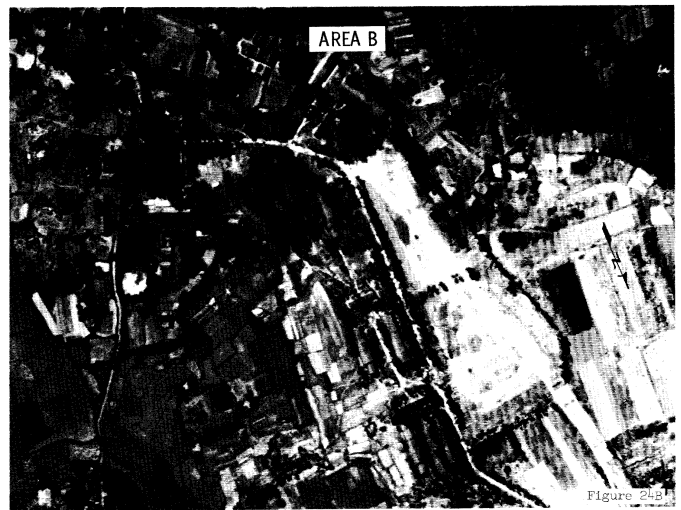
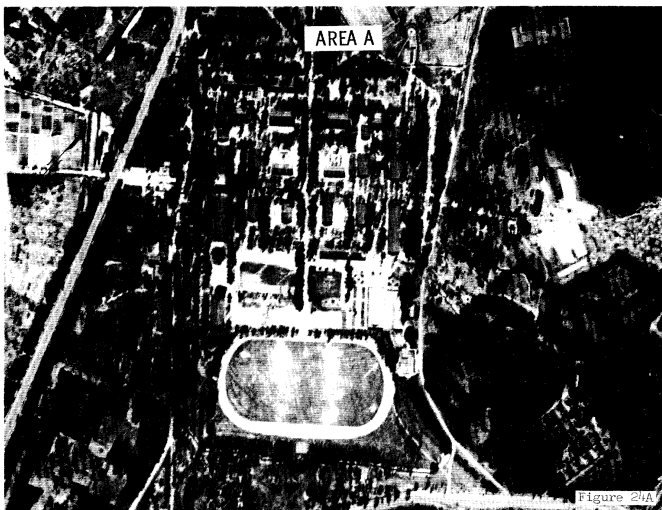
25X1
25X1

TOP SECRET

Approved For Release 2006/02/07 : CIA-RDP02T06408R001200010034-0
LO-CHENG PROBABLE BARRACKS AREAS

CIA/PIR-67185

25X1



25X1

[Redacted]

TOP SECRET

25X1
25X1

Approved For Release 2006/02/07 : CIA-RDP02T06408R001200010034-0



TOP SECRET

CIA/PIR-67185

CIA IMAGERY ANALYSIS DIVISION

Two probable barracks areas (A and B) are located in the vicinity of Chung-Hai (19 15N-110 28E).

Figure 25A

Area A is located 0.9 nm south of Chung-Hai and contains one administration building, 11 barracks, 7 probable quarters, and at least 9 support buildings.

Figure 25B

Area B is located 1.3 nm SE of Chung-Hai and contains at least 10 barracks, and 10 other buildings. Heavy clouds and cloud shadow preclude further identification. No other comparative coverage of interpretable quality exists for either Area A or B.

Figure 25C

A barracks area is located on the WSW edge of Wan-Ming (18 47N-110 23E). Facilities include one administration building, 8 barracks, 3 quarters, 6 storage buildings, 12 storage/vehicle sheds, one vehicle shed, 22 support buildings, an athletic field, and a parade ground. No changes to the facilities are observed between

TOP SECRET

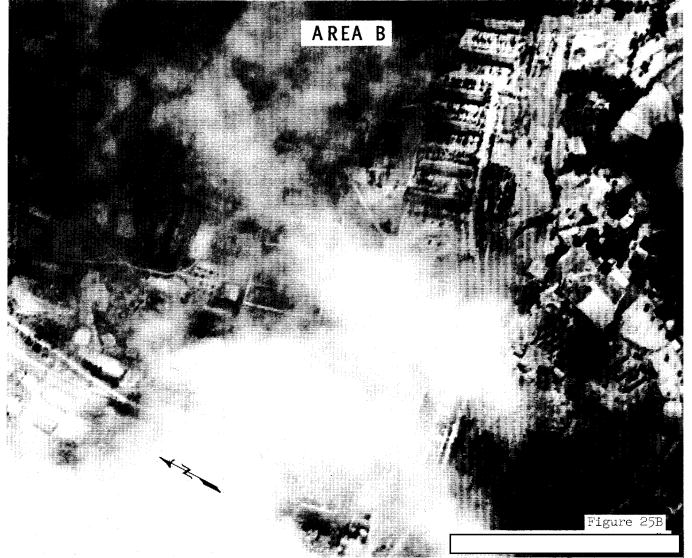
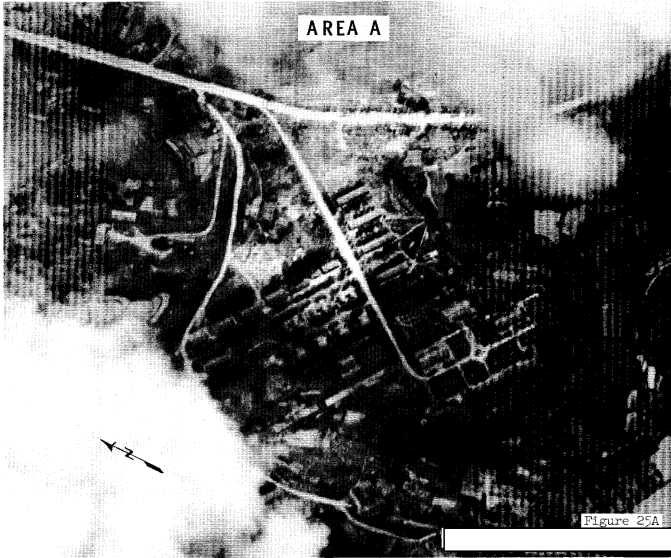
25X1
25X1

TOP SECRET []

Approved For Release 2006/02/07 : CIA-RDP02T06408R001200010034-0
CHIUNG-HAI PROBABLE BARRACKS AREAS

[]
CIA/PIR-67185

25X1



25X1

25X1

WAN-NING BARRACKS AREA



25X1

TOP SECRET []

25X1
25X1

[REDACTED] TOP SECRET [REDACTED]

[REDACTED] CIA/PIR-07185

CIA IMAGERY ANALYSIS DIVISION

Lang-Tang Army Barracks Tien-Tun-Yan [REDACTED] is located in the vicinity of Tun-Chang-Shih (19 22N-110 05E) and covers approximately 18 square miles. The complex is composed of 28 barracks areas (A through N) and 5 weapons and vehicular training areas.

Figure 26A

Area A is located at 19 24N-110 10E and contains one administration building, 8 barracks, 4 probable quarters, 3 probable vehicle sheds, one probable theater, one probable messhall, and 9 support buildings. No comparative coverage exists.

Figure 26B

Area B is located at 19 23N-110 10E and contains one administration building, 8 barracks, 4 probable quarters, one probable theater, and one probable messhall. No comparative coverage exists.

Figure 26C

Area C is located at 19 23N-110 10E and contains one administration building, 6 barracks, 4 probable storage buildings, 8 possible vehicle sheds, one probable theater, and 4 support buildings. No comparative coverage exists.

Figure 26D

Area D is located at 19 21N-110 10E and is comprised of 2 separate areas. The SW area contains one administration building, 6 barracks, one probable theater, and 6 support buildings. The NE area contains one administration building, 8 barracks, 4 probable quarters, 3 storage buildings, one probable theater, one probable messhall, and 6 support buildings. No comparative coverage exists.

TOP SECRET [REDACTED] [REDACTED]

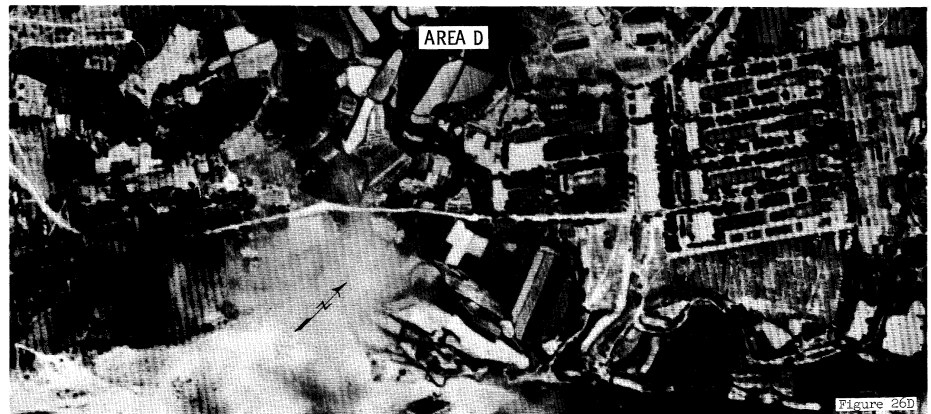
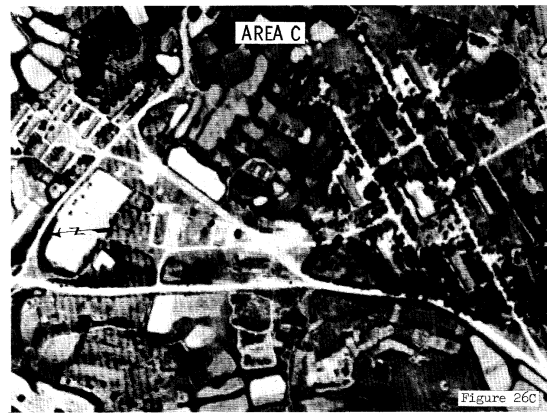
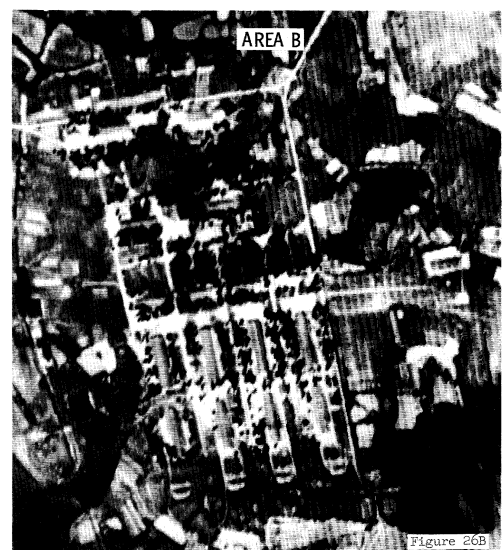
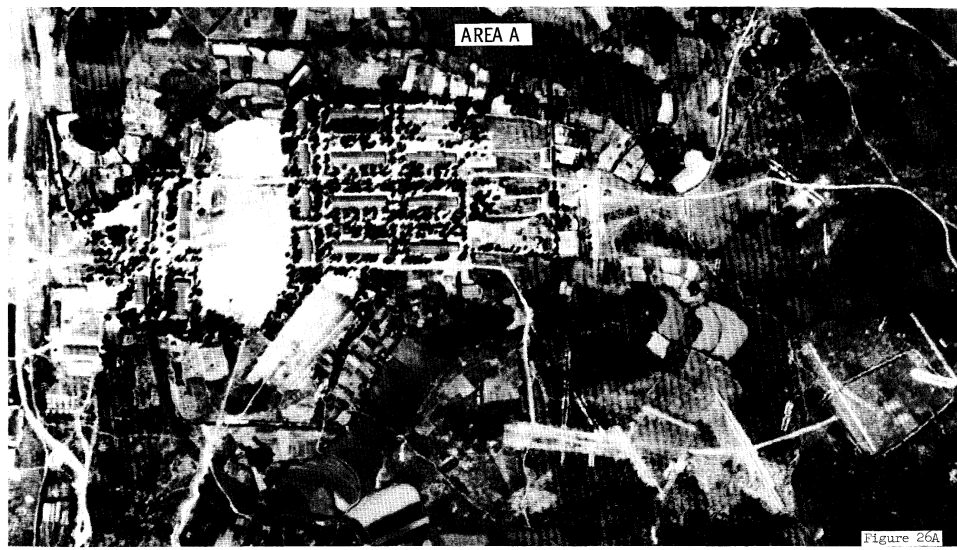
25X1
25X1

TOP SECRET

Approved For Release 2006/02/07 : CIA-RDP02T06408R001200010034-0
LUNG-TANG ARMY BARRACKS TIEN-TUN-YAN

CIA/PIR-67185

25X1



25X1

TOP SECRET

25X1
25X1

TOP SECRET

Approved For Release 2006/02/07 : CIA-RDP02T06408R001200010034-0



TOP SECRET 

CIA IMAGERY ANALYSIS DIVISION



CIA/PTR-67185

Figure 27A

Area E is located at 19 21N-110 10E and contains one administration building, 5 barracks, and one support building in cloud-free areas. The installation is 75% cloud covered and has no comparative photography.

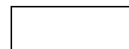
Figure 27B

Area F is located at 19 21N-110 10E and contains at least 2 administration buildings, 11 barracks, 19 storage buildings, 2 vehicle sheds, 4 probable messhalls, and 20 support buildings. The installation is 50% cloud-covered and has no comparative photography.

Figure 27C

Area G is located at 19 24N-110 09E and contains one administration building, 8 barracks, 4 probable quarters, 5 probable storage buildings, one probable theater, one probable messhall, and 9 support buildings. No comparative photography exists.

TOP SECRET 



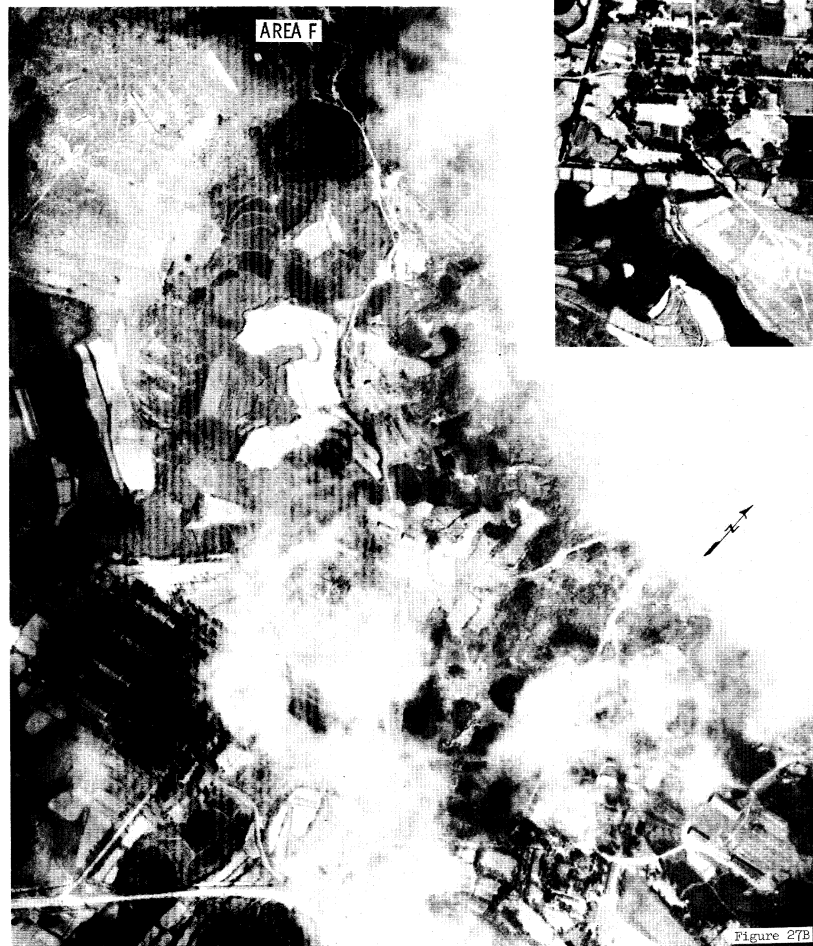
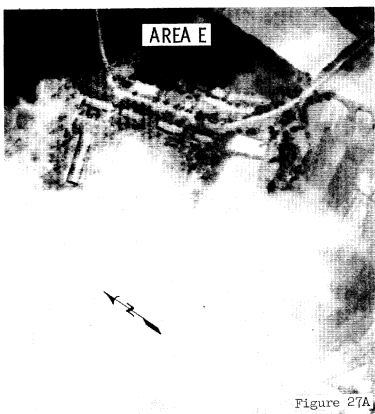
25X1
25X1

TOP SECRET

Approved For Release 2006/02/07 : CIA-RDP02T06408R001200010034-0
LUNG-TANG ARMY BARRACKS TIEN-TUN-YAN (CONT.)

CIA/PIR-67185

25X1



25X1

TOP SECRET

Approved For Release 2006/02/07 : CIA-RDP02T06408R001200010034-0

25X1
TOP SECRET

25X1

[Redacted] **TOP SECRET** [Redacted] [Redacted]
CIA IMAGERY ANALYSIS DIVISION CIA/PIR-67185

Figure 28

Area H is located at 19 22N-110 06E and consists of 9 separate sections. Together they contain 7 administration buildings, 44 barracks, 12 probable barracks, 12 storage buildings, 3 vehicle sheds, 9 probable vehicle sheds, 4 possible vehicle sheds, 4 probable messhalls, and 24 support buildings. Approximately 30 unidentified vehicles are located throughout the area. No comparative photography exists.

TOP SECRET [Redacted] [Redacted]

25XT
25X1

TOP SECRET

Approved For Release 2006/02/07 : CIA-RDP02T06408R001200010034-0

CIA/PIR-67185

25X1



Figure 28

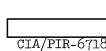
25X1

25X1

TOP SECRET



TOP SECRET



CIA/PIR-67135

CIA IMAGERY ANALYSIS DIVISION

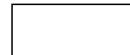
Figure 29A

Area I is located at 19 24N-110 05E and contains one administration building, 4 barracks, 3 probable storage buildings, one probable vehicle shed, and one support building. No comparative coverage exists.

Figures 29B, 29C, 29D

Area J is located at 19 23N-110 05E and consists of 4 separate areas. Together they contain 2 administration buildings, one probable administration building, 22 barracks, 18 storage buildings, and 17 support buildings. No comparative photography exists.

TOP SECRET



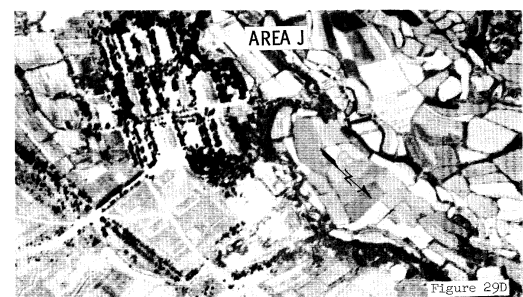
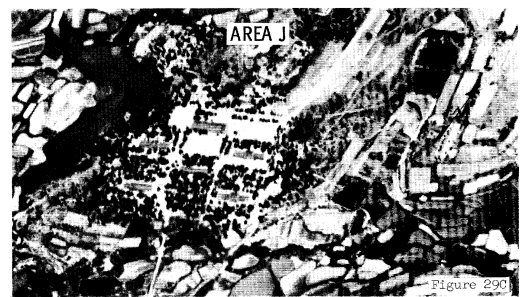
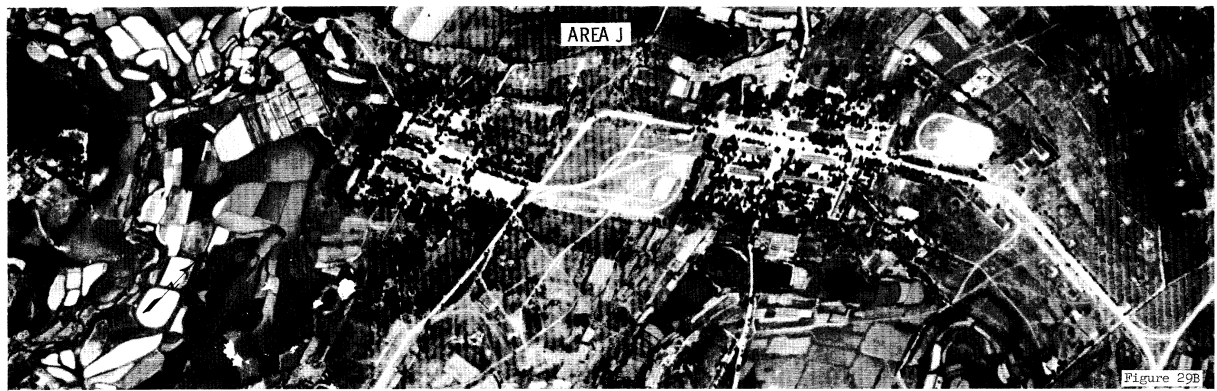
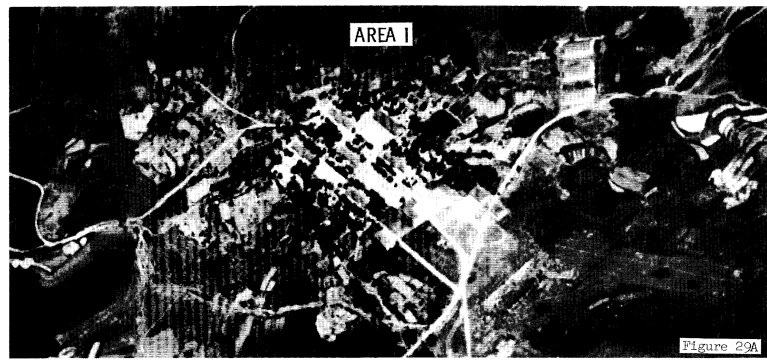
25X1
25X1

TOP SECRET

LIUNG-TANG ARMY BARRACKS TIEN-TUN-YAN (CONT.)
Approved For Release 2006/02/07 : CIA-RDP02T06408R001200010034-0

CIA/PTR-67185

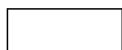
25X1



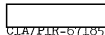
25X1

TOP SECRET

TOP SECRET 25X1
25X1



TOP SECRET



CIA/PLR-0/185

CIA IMAGERY ANALYSIS DIVISION

Figure 30A

Area K is located at 19 21N-110 06E and contains one probable administration building, 18 barracks, and an athletic field. No comparative photography exists.

Figure 30B

Area L is located at 19 20N-110 06E and consists of 2 areas. Together they contain 2 administration buildings, 16 barracks, 4 probable quarters, 9 storage buildings, 2 messhalls, and 10 support buildings. No comparative coverage exists.

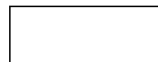
Figure 30C

Area M is located at 19 20N-110 06E and consists of 2 areas. Together they contain 2 administration buildings, 16 barracks, 7 probable quarters, 2 probable theaters, 2 messhalls, and 10 support buildings. No comparative coverage exists.

Figure 30D

Area N is located at 19 19N-110 05E and contains one administration building, 5 probable barracks, one probable theater, and 2 support buildings.

TOP SECRET



25X1
25X1

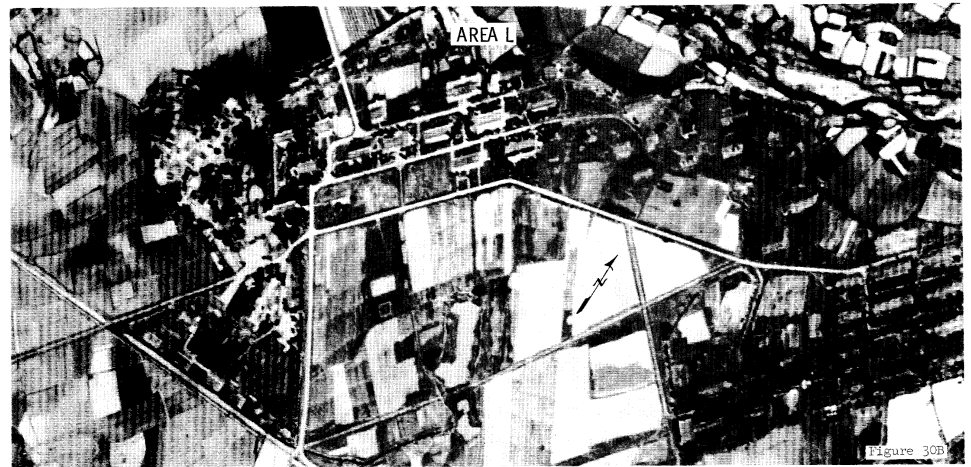
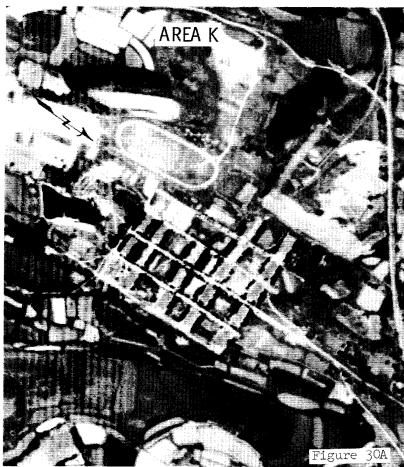
TOP SECRET [redacted]

Approved For Release 2006/02/07 : CIA-RDP02T06408R001200010034-0

LUNG-TANG ARMY BARRACKS TIEN-TUN-YAN (CONT.)

[redacted]
CIA/PIR-67185

25X1



25X1

[redacted]

25X1
25X1

TOP SECRET [redacted]

Approved For Release 2006/02/07 : CIA-RDP02T06408R001200010034-0



TOP SECRET



CIA/PIR-67185

CIA IMAGERY ANALYSIS DIVISION

Figure 31A

The wheeled-vehicle driver training area (adjacent to Area H) contained heavy vehicular scarring on [redacted] photography. Vehicles were observed in a motor park in Area H but poor quality precluded identification. No comparative photography of the facility exists.

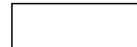
Figure 31B

The tracked-vehicle driver training area and the tank/SP moving target firing range located at 19 21N-110 11E contain heavy vehicular scarring on both [redacted] photography. The tank/SP moving target firing range observed on [redacted] photography appears abandoned on [redacted] coverage; however, a new firing range located adjacent to the driver training area was observed on the [redacted] photography.

Figure 31C

The strongpoint located at 19 24N-110 09E which is used for either training or defensive purposes appears moderately active on [redacted] photography. No comparative coverage exists.

TOP SECRET

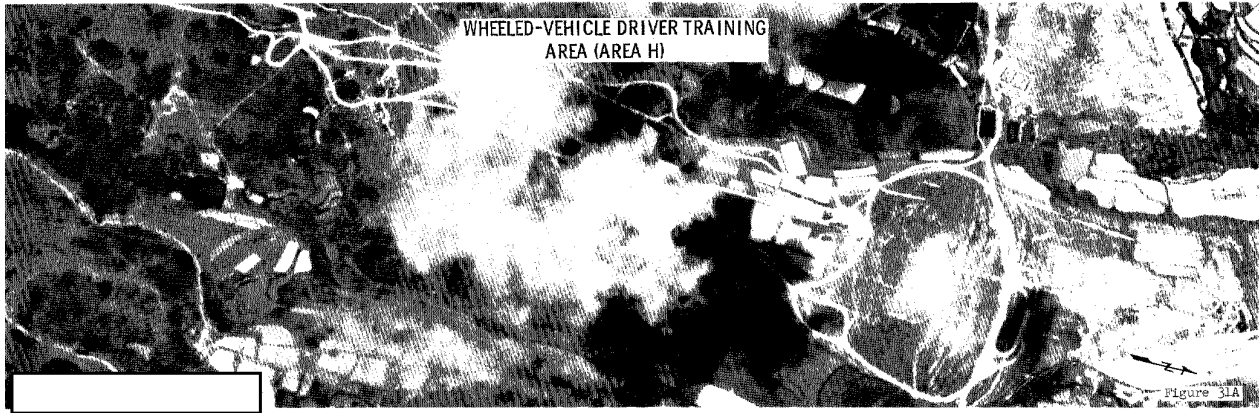


25X1

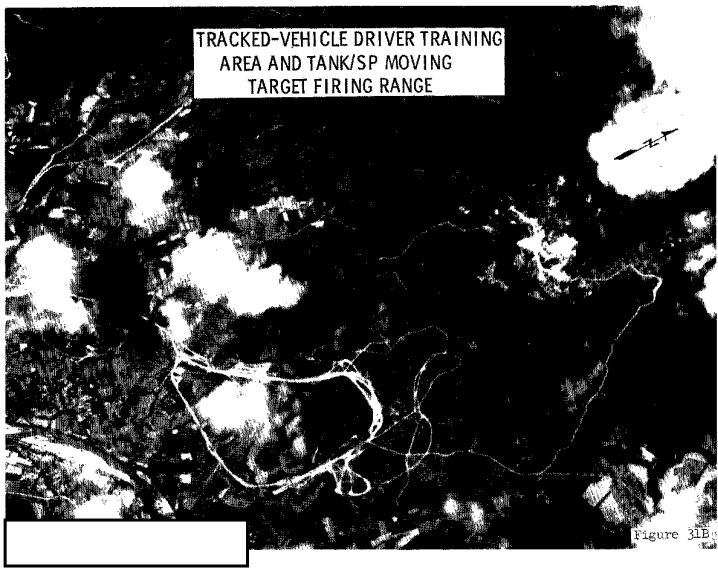
TOP SECRET [redacted]

Approved For Release 2006/02/07 : CIA-RDP02T06408R001200010034-0 [redacted] CIA/PIR-67185

25X1



25X1



25X1

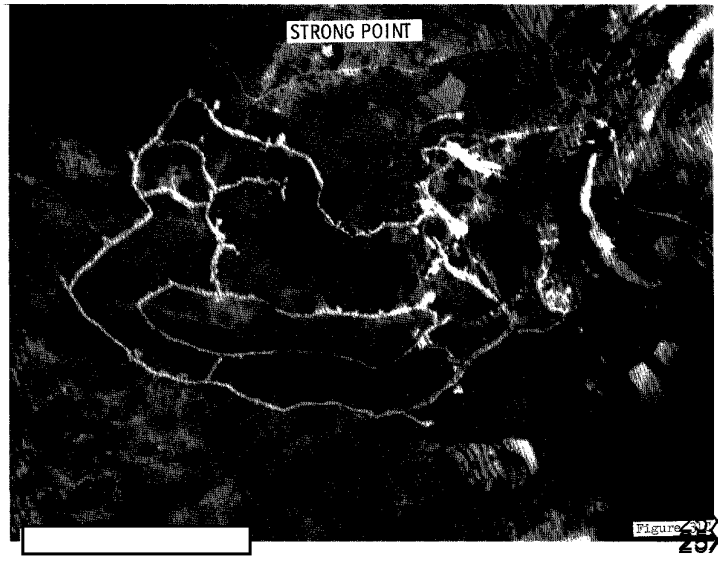


Figure 31B [redacted] 25X1

Approved For Release 2006/02/07 : CIA-RDP02T06408R001200010034-0

TOP SECRET [redacted]

25X1



TOP SECRET



CIA/PIR-67185

CIA IMAGERY ANALYSIS DIVISION

25X1
25X1

A military complex consisting of 6 areas (A thru F) is located along the road extending from Wen-Chang to Mai-Hao.

Figure 32A

Area A (19 36 30N-110 45 00E) contains 5 barracks, 4 possible vehicle sheds, and 18 support buildings.

Figure 32B

Area B (19 36 10N-110 45 30E) contains 7 barracks, 2 support buildings, a probable bivouac area, and 2 athletic fields.

Figure 32C

Area C (19 36 00N-110 45 00E) contains 2 administration buildings, 30 barracks, a probable theater, 10 support buildings, and an athletic field.

- 38 -

TOP SECRET



25X1

25X1
25X1

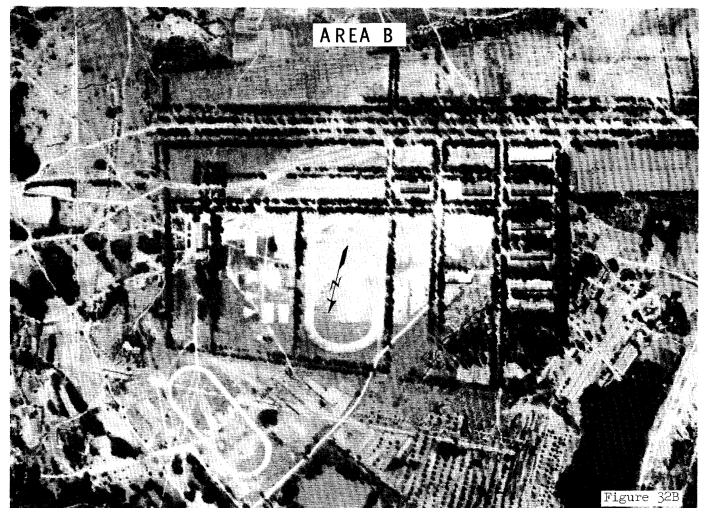
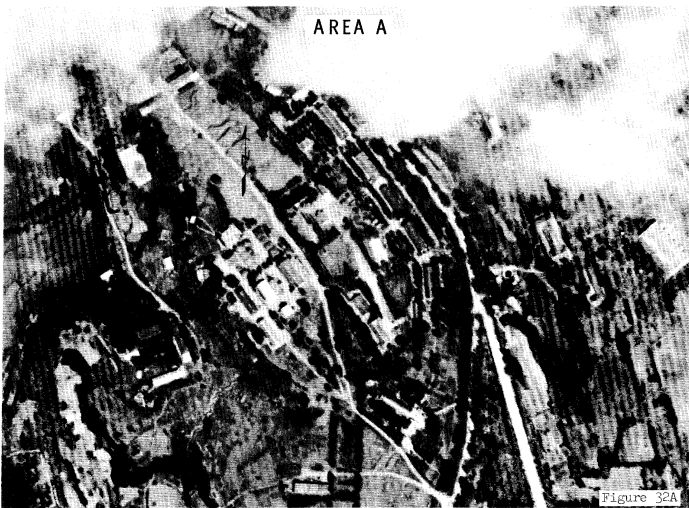
TOP SECRET

Approved For Release 2006/02/07 : CIA-RDP02T06408R001200010034-0

WEN-CHANG MILITARY COMPLEX

CIA/PIR-67185

25X1



25X1

TOP SECRET

Approved For Release 2006/02/07 : CIA-RDP02T06408R001200010034-0

25X1
25X1

TOP SECRET



TOP SECRET



CIA/PIR-67185

CIA IMAGERY ANALYSIS DIVISION

Figures 33A, 33B, 33C, 33D

Area D (19 35N-110 45E) contains 4 probable administration buildings, 25 barracks, 4 quarters, 17 storage buildings, 2 vehicle sheds, and approximately 35 support buildings.

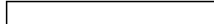
Figure 33E

Area E (19 34N-110 45E) contains 4 vehicle sheds, 2 probable maintenance buildings, 5 storage buildings, and 7 support buildings.

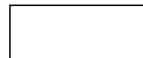
Figure 33F

Area F (19 34N-110 45E) contains one administration building, 7 barracks, 8 quarters, 8 possible storage buildings, 2 probable vehicle sheds, and 9 support buildings.

Trenching is observed throughout areas and heavy tracked-vehicle scarring is located adjacent to Area E. A moderate level of activity is observed in all areas with no changes in facilities apparent between



TOP SECRET

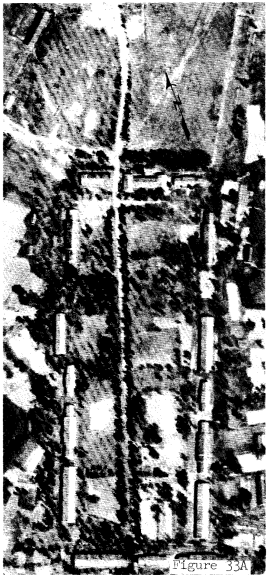


25X1
25X1

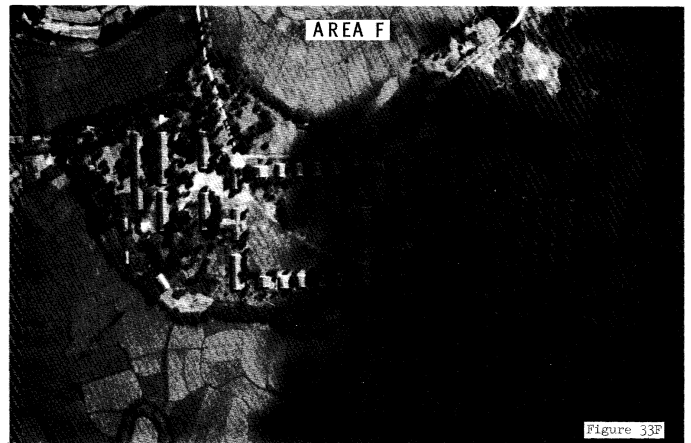
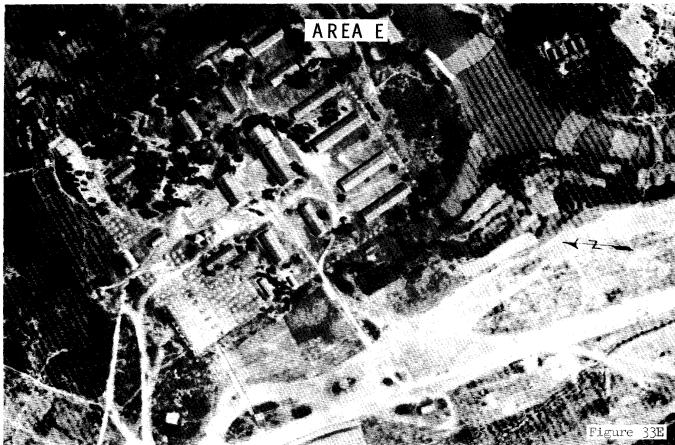
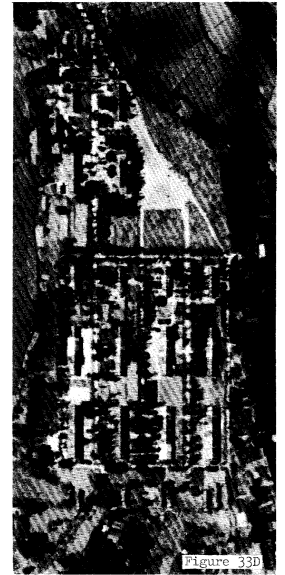
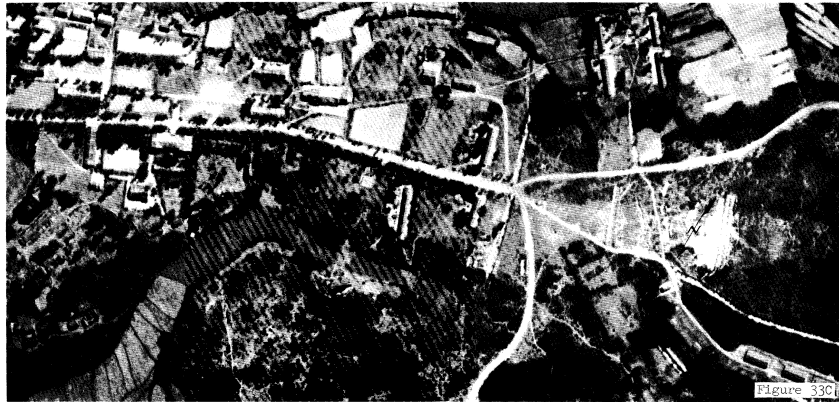
TOP SECRET

WEN-CHANG MILITARY COMPLEX CONTINUED

25X1
CIA/PIR-67185



AREA D



25X1

[Redacted]

TOP SECRET

25X1
25X1



TOP SECRET



CIA/PIR-67185

CIA IMAGERY ANALYSIS DIVISION

A military complex consisting of 6 areas (A thru F) is located in the Wen-Chiao area.

Figure 34A

Area A (19 42N-110 54E) contains one administration building, 8 barracks, 4 quarters, 10 support buildings and an athletic field.

Figure 34B

Area B (19 42N-110 54E) contains one administration building, 10 barracks, 15 support buildings, and an athletic field.

Figure 34C

Area C (19 43N-110 53E) contains 6 buildings and a parade ground. The facilities appear to be in the process of being razed.

Figure 34D

Area D (19 44N-110 53E) contains one administration building, 11 barracks, and 4 support buildings.

Figure 34E

Area E (19 40N-110 57E) contains one administration building, 8 barracks, 3 quarters, and 8 support buildings.

Figure 34F

Area F (19 40N-110 54E) is a probable barracks area containing 12 barracks, 2 probable storage buildings, 6 support buildings, and an athletic field.

Trenching is observed throughout all areas and the complex contains a light level of activity. No significant changes were observed from



- 40 -

TOP SECRET



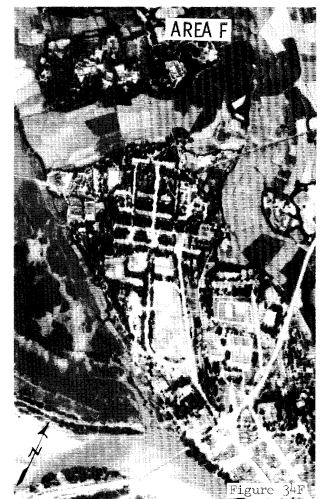
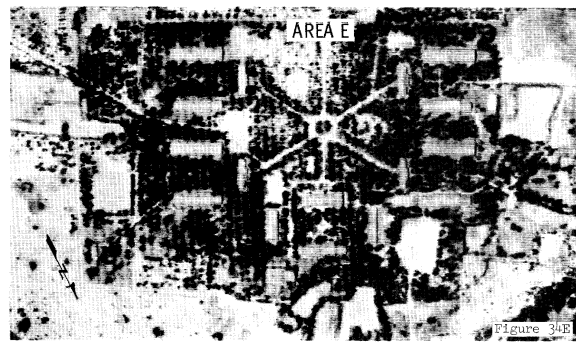
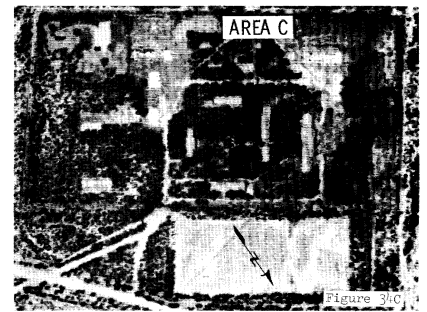
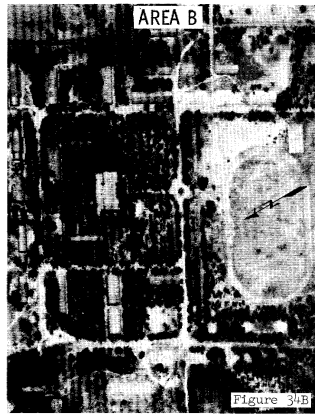
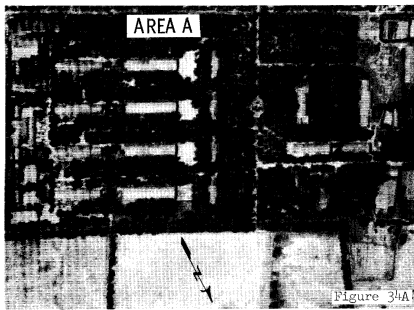
25X1
25X1

TOP SECRET []

Approved For Release 2006/02/07 : CIA-RDP02T06408R001200010034-0
WEN-CHIAO MILITARY COMPLEX

[]
CIA/PIR-67185

25X1



25X1

[]

TOP SECRET []

25X1
25X1

Approved For Release 2006/02/07 : CIA-RDP02T06408R001200010034-0

[] TOP SECRET []

[] CIA/PTR-67185

CIA IMAGERY ANALYSIS DIVISION

Weng-Tien Army Barracks [] is comprised of 6 separate areas (A thru F) in and around Weng-Tien (19 56N-110 52E).

Area A (not shown on graphic) is located on the east edge of the village and contains approximately 12 barracks, 3 support buildings, and an athletic field.

Figure 35A

Area B is located 0.5 nm SSE of Weng-Tien and contains one administration building, 8 barracks, and 7 support buildings.

Figure 35B

Area C is located 0.5 nm west of Weng-Tien and contains one administration building, 10 barracks, and at least 9 support buildings.

Area D is located 0.6 nm west of the village and contains one administration building, 10 barracks, 6 possible barracks, 3 probable storage buildings, and 3 support buildings.

Area E is located 1.0 nm west of Weng-Tien and contains 4 probable barracks and 6 support buildings.

Figure 35C

Area F is located 0.8 nm NW of the village and contains one administration building, 7 barracks, and 3 support buildings.

No changes to the complex were observed from [] photography to [] coverage. Few training facilities were observed in the area. The whole military area appears to have a low-level of usage.

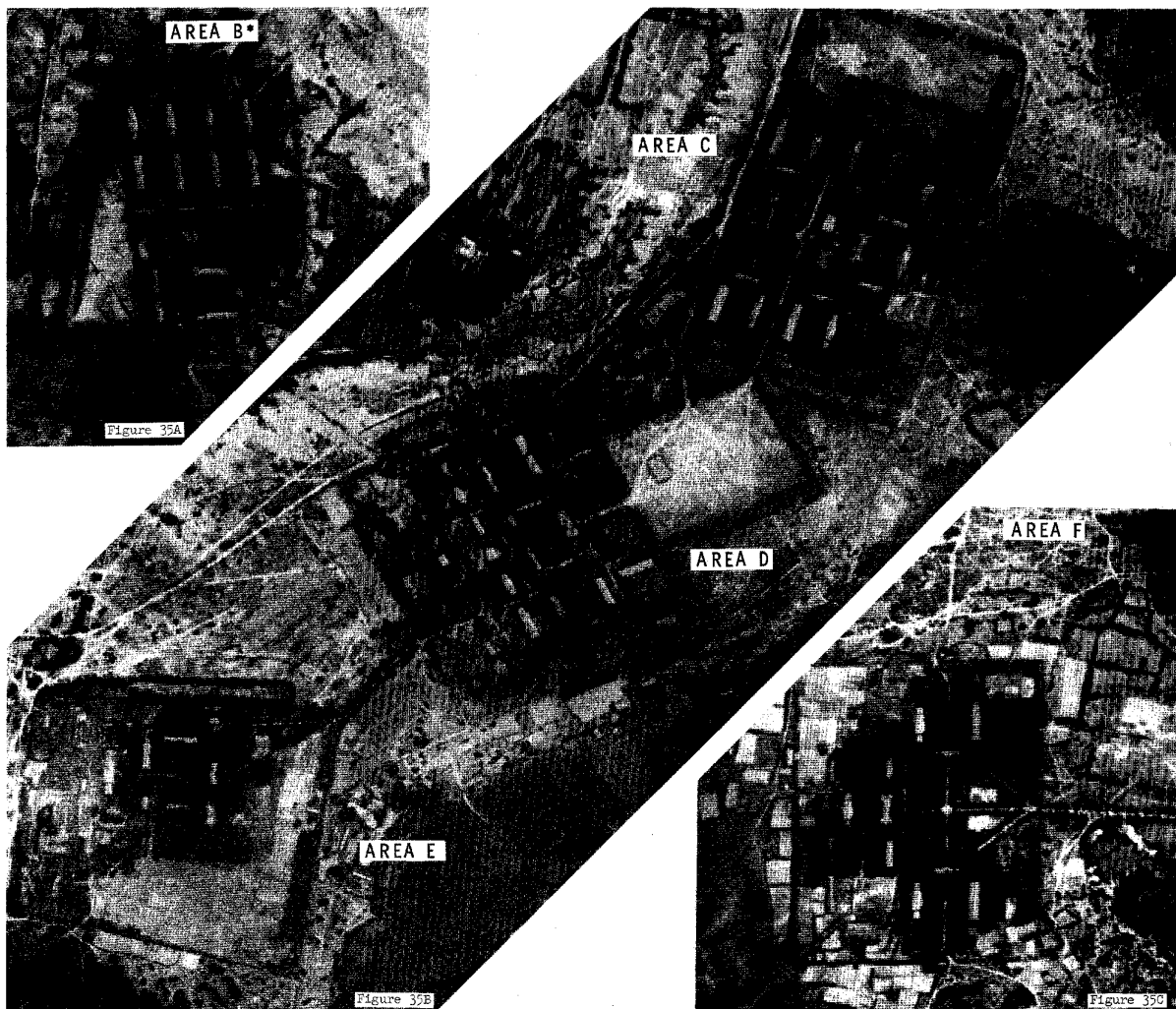
TOP SECRET []



WENG-TIEN ARMY BARRACKS

CIA/PIR-67185

Approved For Release 2006/02/07 : CIA-RDP02T06408R001200010034-0



*area A not shown on graphic

[Redacted]

Approved For Release 2006/02/07 : CIA-RDP02T06408R001200010034-0

TOP SECRET



TOP SECRET

CIA/PIR-67185

CIA IMAGERY ANALYSIS DIVISION

25X1
25X1

A large military complex consisting of 15 areas (A thru O) is located in the vicinity of Ta-Chih-Po-Shih (19 48N-110 41E).

Area A (not shown on graphic) a moving target firing range consisting of 5 moving target runs, is located at 19 46N-110 40E (appears in disuse).

Figure 36A

Area B is located at 19 49N-110 40E and contains one administration building, 9 barracks, 8 storage buildings, and a possible hospital. Two separately secured areas contain 6 possible ammunition storage buildings and 8 support buildings. A wheeled-vehicle driver training area is located on the east edge of the barracks. The only change observed from was fresh vehicle activity at the driver training area on coverage.

Figure 36B

Areas C, D and E are located at 19 52N-110 43E.

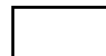
Area C contains one administration building, 8 barracks, 4 probable quarters, 3 storage buildings, 12 support buildings, and a probable parade ground.

Area D contains one administration building, 20 probable barracks, 14 probable storage buildings, 20 support buildings, and an athletic field.

Area E contains one administration building, 8 barracks, 4 probable quarters, 3 storage buildings, and 7 support buildings. No changes were observed in Areas C, D and E from

25X1

TOP SECRET



25X1
25X1

25X1
25X1

TOP SECRET

Approved For Release 2006/02/07 : CIA-RDP02T06408R001200010034-0

CIA/PIR-67185

25X1



Figure 36A



Figure 36B

25X1

[Redacted]



TOP SECRET



CIA/PIR-67185

CIA IMAGERY ANALYSIS DIVISION

Figure 37A

Area F is located at 19 49N-110 39E and contains one administration building, 10 barracks, and 12 support buildings. No changes were observed between [redacted]

Figure 37B

Areas G, H, I and J are located at 19 50N-110 39E.

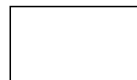
Area G contains one administration building, 3 barracks, 2 storage buildings, one probable vehicle shed, and 5 support buildings.

Area H contains one administration building, 4 barracks, 6 possible vehicle sheds, and 9 support buildings.

Area I contains one administration building, 12 barracks, 3 storage buildings, 8 possible ammunition storage buildings, and 6 support buildings.

Area J contains 2 administration buildings, 7 barracks, 4 probable quarters, and 11 support buildings. No changes were observed in Areas G, H, I and J between [redacted]

TOP SECRET



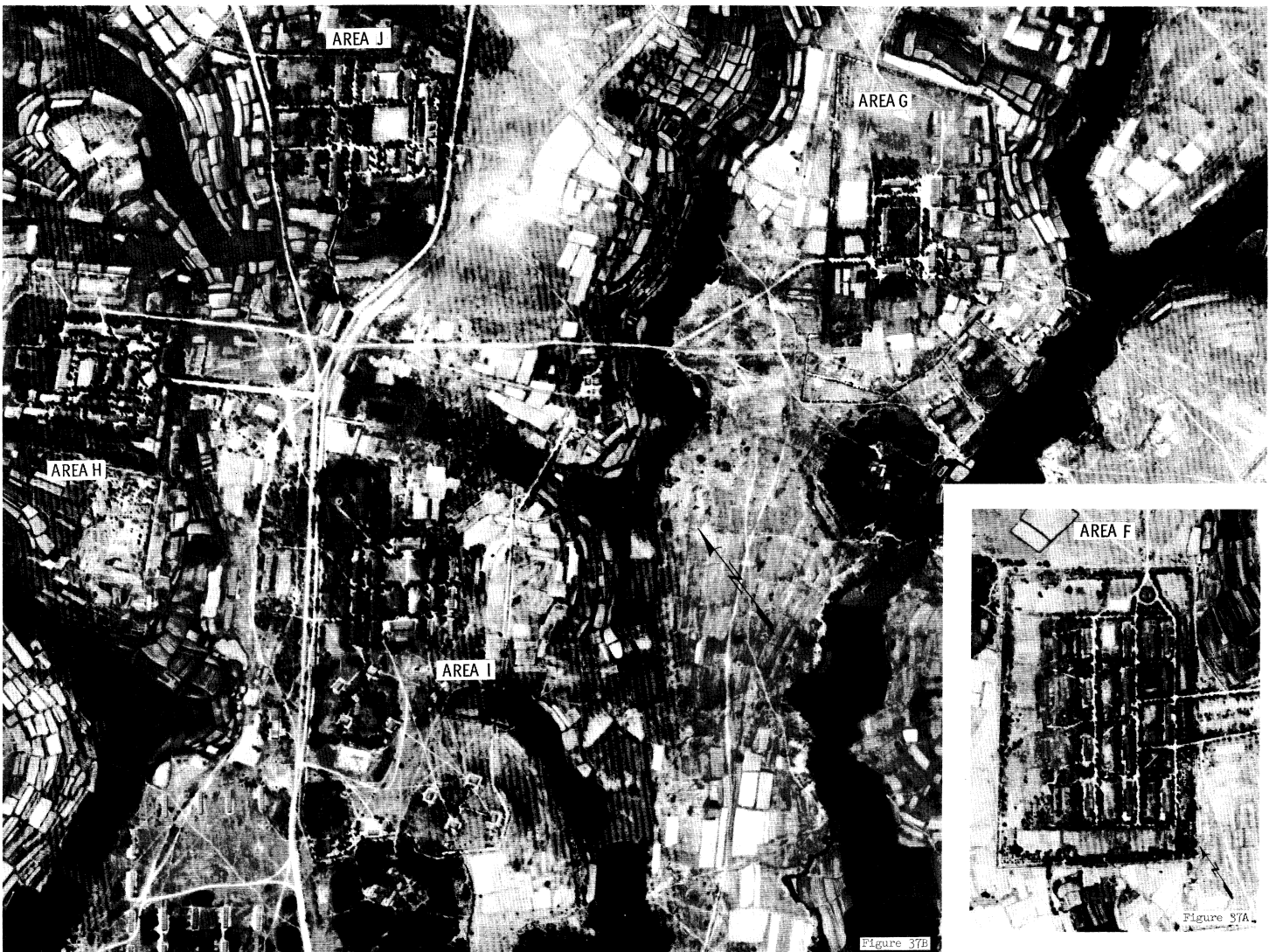
25X1
25X1

TOP SECRET

Approved For Release 2006/02/07 : CIA-RDP02T06408R001200010034-0

CIA/PIR-67185

25X1

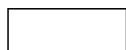


25X1

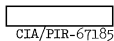
TOP SECRET

25X1

TOP SECRET



TOP SECRET



CIA/PTR-67185

CIA IMAGERY ANALYSIS DIVISION

Figure 38A

Area K is located at 19 51N-110 39E and contains one administration building, 6 barracks, 3 quarters, and 11 support buildings.

Figure 38B

Areas L, M, N and O are located at 19 53N-110 40E.

Area L contains 5 barracks and 6 support buildings.

Area M contains 5 barracks and 4 support buildings.

Area N contains one administration building, 11 barracks, 8 storage buildings, one probable vehicle shed, and 22 support buildings.

Area O contains 5 barracks and 5 support buildings.

Four buildings have been razed from each of Areas L, M, N and O. No significant change to the facilities is observed between [redacted] and [redacted] coverage.

Extensive trenching and numerous gun emplacements are observed throughout the area. The absence of extensive personnel and vehicular scarring indicates the complex is probably manned below its capacity.

TOP SECRET



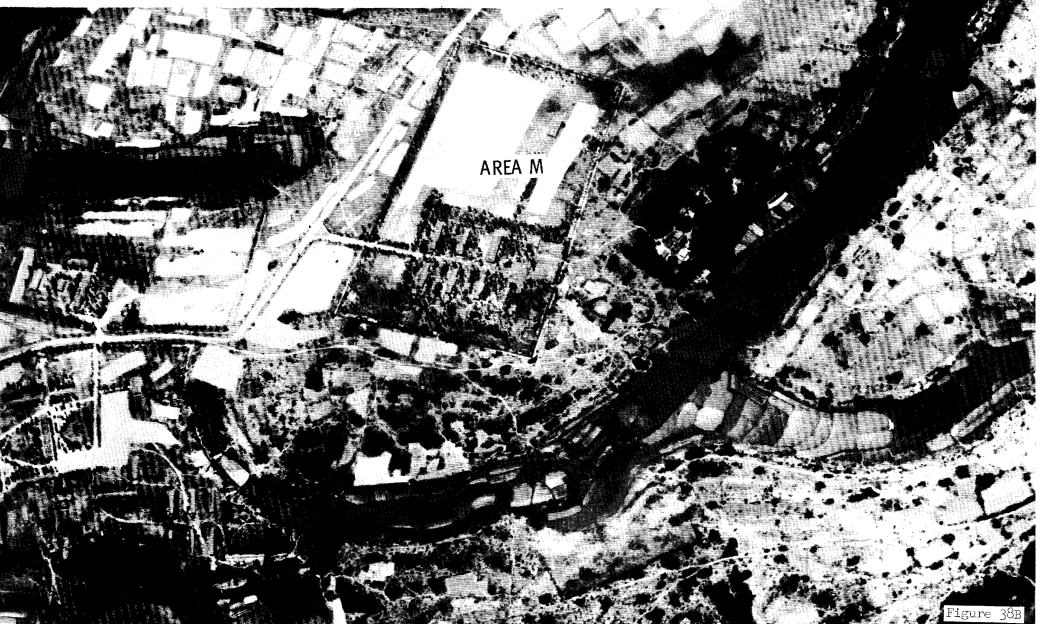
25X1
25X1

TOP SECRET []

Approved For Release 2006/02/07 : CIA-RDP02T06408R001200010034-0
TA CHIN-PO-SHIN MILITARY COMPLEX (CONT.)

[]
CIA/PIR-67185

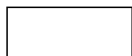
25X1



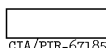
25X1

[]

25X1
25X1
TOP SECRET []



TOP SECRET



CIA/PTR-67185

CIA IMAGERY ANALYSIS DIVISION

Figure 39

Chiu-Chou Barracks and Supply Depot [redacted] is located at 19 46N-110 25E and consists of 2 areas. The NW area contains one administration building, 12 storage buildings, 2 probable vehicle sheds, and 2 support buildings. The SE area contains 3 probable administration buildings, 25 barracks, 8 storage buildings, 6 probable vehicle sheds, 6 support buildings, and a revetted excavation containing at least 6 FOL horizontal tanks.

The horizontal tanks were first observed on [redacted]. Comparative analysis revealed no significant change between [redacted] and [redacted].

TOP SECRET



25X1
25X1

TOP SECRET

CHIU-CHOU BARRACKS AND
SUPPLY DEPOT

CIA/PIR-67185

25X1



Figure 39

25X1

25X1
25X1

TOP SECRET



TOP SECRET

CIA/PTR-67185

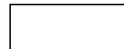
CIA IMAGERY ANALYSIS DIVISION

The Hai-Kou complex contains 10 barracks areas (Figures 10, 40, 41 and 42) and one storage area (Figure 41).

Figure 40

A large barracks area is located 2 nm SW of Hai-Kou at 20 01 25N-110 18 45E. Facilities include 5 administration buildings, 80 barracks, 7 probable quarters, 19 probable storage buildings, 8 vehicle/equipment sheds, 58 support buildings, and one athletic field. One vehicle/equipment shed was added between [redacted]. Nine cargo trucks are observed in the motor pool on [redacted] coverage.

TOP SECRET



25X1
25X1

TOP SECRET

BARRACKS AREA - HAI-KOU
Approved For Release 2006/02/07 : CIA-RDP02T06408R001200010034-0

CIA/PIR-67185

25X1



25X1

Figure 40

25X1
25X1

TOP SECRET



TOP SECRET



CIA/PIR-67185

CIA IMAGERY ANALYSIS DIVISION

Figure 41

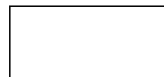
Barracks Area A is located on the west edge of Hai-Kou adjacent to the Nan-Tu River at 20 02 54N-110 19 28E. The facilities include one administration building, 8 barracks, one probable classroom building, 11 probable storage buildings, one vehicle shed, and 12 support buildings. No change in facilities is observed between [redacted] coverage.

Barracks Area B is a possible barracks area located on the SW edge of Hai-Kou at 20 02 26N-110 19 37E. The installation contains 12 possible barracks and 18 support buildings. No change in facilities is observed between [redacted] photography.

Barracks Area C is located on the SW edge of Hai-Kou at 20 02 34N-110 19 50E. Facilities include 5 administration buildings, 18 barracks, approximately 40 support buildings, one possible gymnasium, and 2 basketball courts. No change in facilities is observed between [redacted]

A storage area is located in the south part of Hai-Kou at 20 02 32N-110 20 08E and contains one administration building, 10 large storage buildings, and 10 support buildings. One storage building was added between [redacted]

TOP SECRET



25X1
25X1

TOP SECRET

Approved For Release 2006/02/07 : CIA-RDP02T06408R001200010034-0

CIA/PIR-67185

25X1

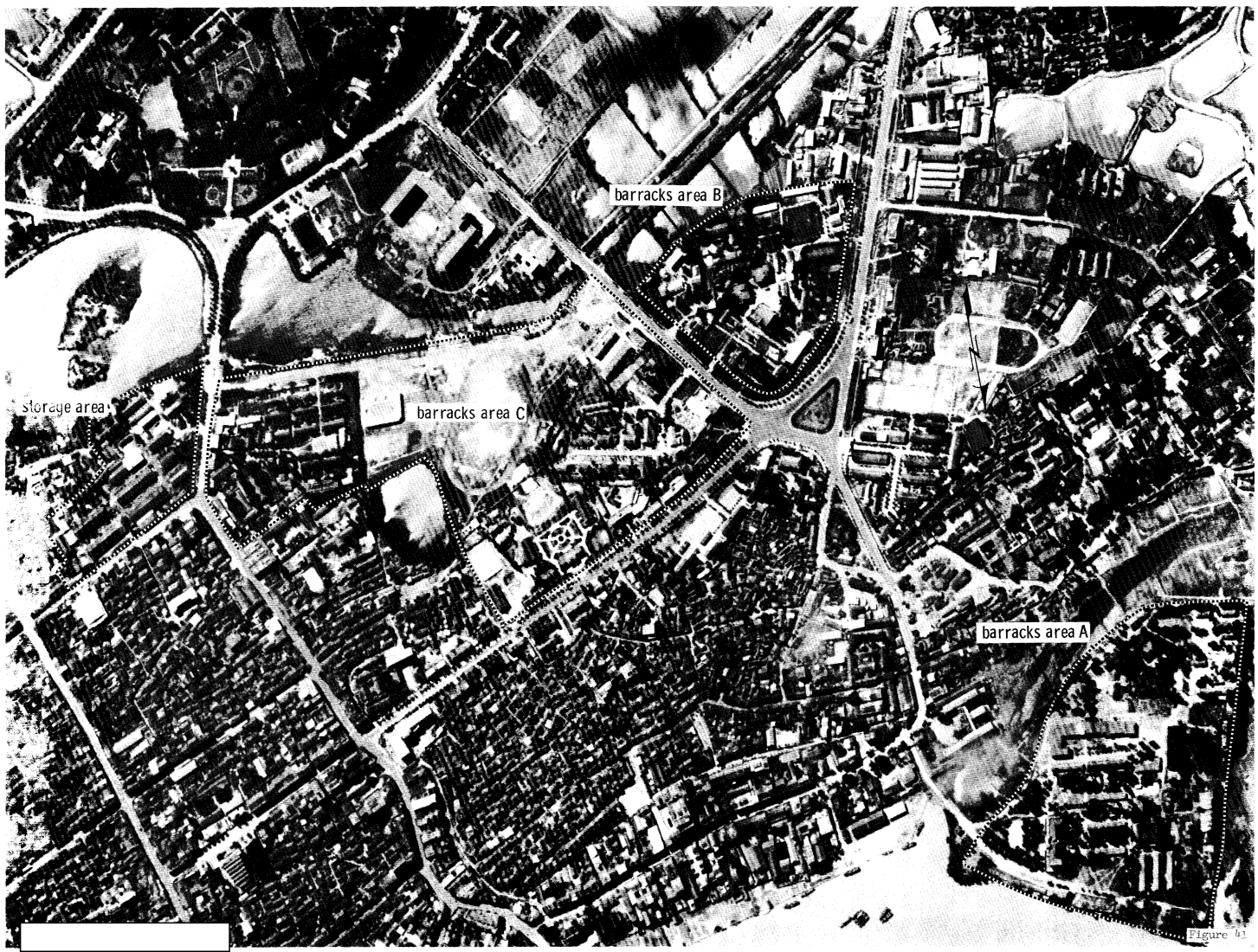


Figure 41

25X1

TOP SECRET

TOP SECRET

25X1
25X1

TOP SECRET

CIA IMAGERY ANALYSIS DIVISION

CIA/PIR-67185

Figure 42A

Barracks Area F, a probable headquarters and barracks area, is located 1.0 nm SSW of Hai-Kou at 20 01 43N-110 19 42E. On the north side of the road are one administration building, 5 probable barracks, 2 guard buildings, and 6 support buildings. The barracks area on the south side of the road contains 2 administration buildings, 30 probable barracks, 4 probable vehicle sheds, one probable theater, and approximately 25 support buildings. One administration building has been added in the installation on the south side of the road between [redacted]

Figure 42B

Barracks Area G is located 1.5 nm SW of Hai-Kou at 20 01 27N-110 19 15E and contains 2 administration buildings, 30 barracks, 6 storage buildings, one probable equipment shed, 2 guard buildings, one large auditorium, and 12 support buildings. No changes in facilities are observed between [redacted]

Figure 42C

Barracks Area H is located 0.8 nm SW of Hai-Kou at 20 02 00N-110 19 25E. Facilities include one administration building, 12 barracks, one vehicle shed, one probable maintenance building, one messhall, 16 support buildings, 2 basketball courts, and one athletic field. No changes in the facilities are observed between [redacted]

Figure 42D

Barracks Area I is located 1.0 nm WSW of Chung-Shan at 19 59 35N-110 19 25E. Facilities include 2 administration buildings, a large probable headquarters building, 30 barracks, one probable vehicle shed, 2 messhalls, one auditorium, approximately 30 support buildings, and a basketball court. No changes in facilities are observed between [redacted]

TOP SECRET

25X1
25X1

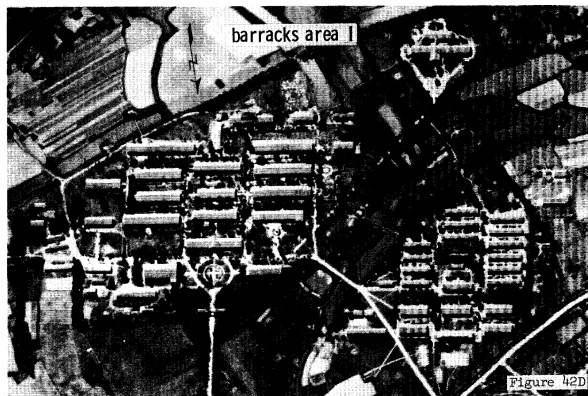
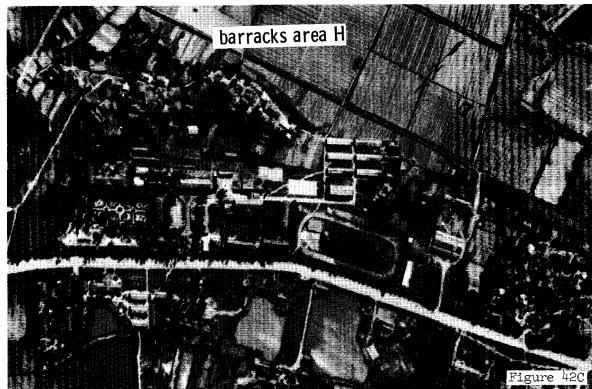
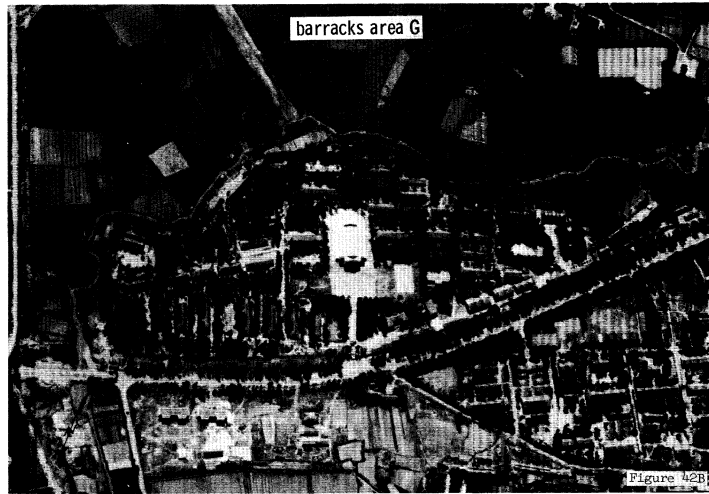
TOP SECRET

Approved For Release 2006/02/07 : CIA-RDP02T06408R001200010034-0

BARRACKS AREAS - HAI-KOU AND CHIUNG-SHAN

CIA/P/IR-67185

25X1



25X1

TOP SECRET

25X1
25X1

Approved For Release 2006/02/07 : CIA-RDP02T06408R001200010034-0

TOP SECRET

CIA/PIR-67185

CIA IMAGERY ANALYSIS DIVISION

Figure 43

A probable Air Defense Headquarters area is located adjacent to the SE end of the airfield at 20 01N-110 21E. Facilities include 3 probable administration buildings, 9 barracks, one probable vehicle shed, and 18 support buildings. No changes in the facilities are observed between [redacted]

A possible SCR-270 radar site is located adjacent to the NE part of the probable Air Defense Headquarters. The radar which was first observed on [redacted] photography is not observed on 1965 coverage, however, the pad and support building are still present.

Barracks Area A is located 2.3 nm SE of Hai-Kou at 20 00 50N-110 21 17E. Facilities include one large administration building, 8 barracks, 8 support buildings, and a probable basketball court. The administration building was constructed between [redacted]

Barracks Area B is located 2.4 nm SSE of Hai-Kou at 20 00 40N-110 20 50E. Facilities include one probable administration building, 20 barracks, 3 vehicle sheds, a possible hospital, 27 support buildings, a basketball court, and a wheeled-vehicle driver training area. One cargo truck and 5 pieces of equipment are observed on [redacted] coverage. No changes are observed between [redacted] coverage.

Storage Area 1 is located 2.2 nm SSE of Hai-Kou at 20 00 48N-110 21 00E and contains 12 barracks, one large monitor-roof storage building, 4 other monitor-roof storage buildings, 4 other storage buildings, 10 support buildings, and a basketball court. No change in facilities is observed between [redacted]

Storage Area 2 is located on the south side of Hai-Kou Airfield at 20 00 55N-110 20 45E. Facilities include one possible administration building, 2 probable storage buildings, 3 possible vehicle sheds, one building under construction, and 3 support buildings. Three cargo trucks were observed on [redacted] coverage. No change in facilities is observed between [redacted] photography.

TOP SECRET

25X1
25X1

TOP SECRET

Approved For Release 2006/02/07 : CIA-RDP02T06408R001200010034-0
BARRACKS AND STORAGE AREAS - CHIUNG-SHAN

CIA/PIR-67185

25X1

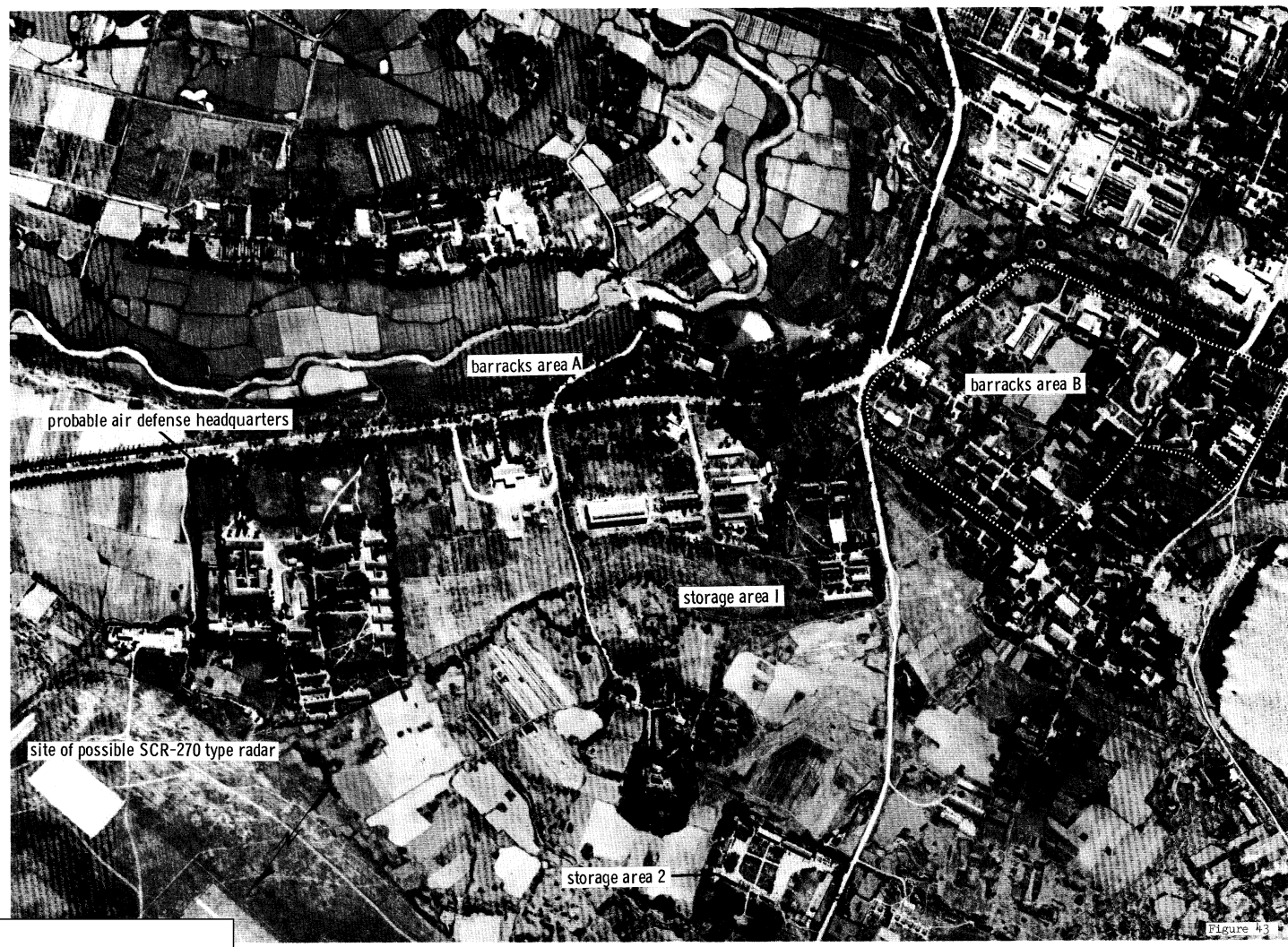


Figure 4-3

25X1

[Redacted box]

TOP SECRET 25X1
25X1



TOP SECRET



CIA/PLR-67185

CIA IMAGERY ANALYSIS DIVISION

Figure 44A

A probable barracks/storage area is located 0.5 nm south of Shu-Chang at 20 00 57N-110 16 05E and consists of a barracks area and 2 separately secured storage areas. The barracks area contains 2 administration buildings, 21 barracks, 18 storage buildings, 3 separately secured vehicle sheds, and 38 support buildings. One storage area contains 9 storage buildings, one probable barracks/administration building, and 5 support buildings. The other storage area contains 11 storage buildings, one L-shaped probable vehicle/equipment storage shed, and 4 support buildings. One large storage building has been added since [redacted]. This installation may be Shu-Chang Supply Depot Hai-Kou [redacted].

Figure 44B

A probable barracks area is located 1.0 nm west of Shu-Chang at 20 01 20N-110 15 10E and contains 2 administration buildings, one probable barracks, 8 quarters, 2 storage buildings, one possible vehicle shed, and 19 support buildings. No changes in facilities are observed between [redacted].

Figure 44C

A possible barracks area is located one nm SE of Shu-Chang at 20 01 00N-110 17 00E. Facilities include one administration building, 13 barracks, 2 large monitor-roof buildings, 4 storage buildings, one large unidentified building, 24 support buildings, and a probable parade ground. No significant changes are observed between [redacted].

Figure 44D

A vehicle park/storage area is located 0.8 nm SE of Shu-Chang at 20 01 00N-110 17 00E and contains one administration building, 2 probable barracks, 18 probable storage buildings, 5 possible storage buildings, and 15 support buildings. Fifty-five cargo trucks were observed on [redacted] photography and 50 were observed on [redacted] coverage. No apparent change in facilities is observed between [redacted].

TOP SECRET



25X1
25X1

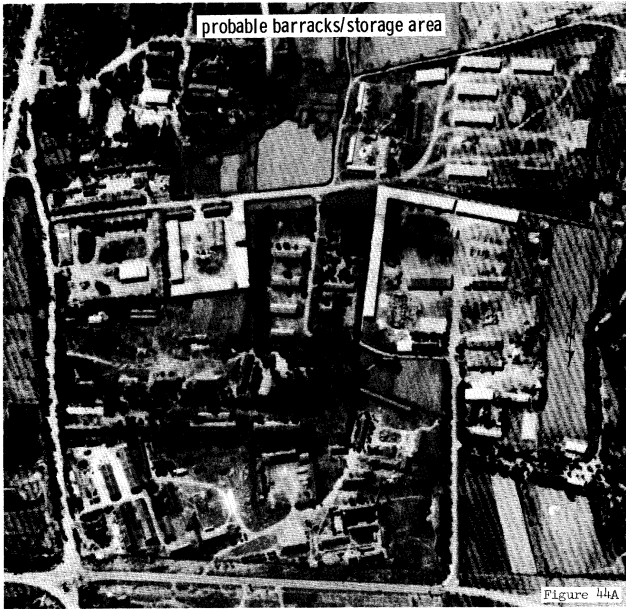
TOP SECRET

Approved For Release 2006/02/07 : CIA-RDP02T06408R001200010034-0

BARRACKS AND STORAGE AREAS - SHU-CHANG

CIA/PIR-67185

25X1



25X1

TOP SECRET

25X1
25X1

Approved For Release 2006/02/07 : CIA-RDP02T06408R001200010034-0

[REDACTED] TOP SECRET [REDACTED]

[REDACTED] CIA/PIR-67185

CIA IMAGERY ANALYSIS DIVISION

Figure 45A

The Tan-Heien Military Institute is located on the NE edge of Na-Ta at 19 36N-109 34E. Facilities include one administration building, one administration/school building, 2 large possible barracks, 5 small barracks, 6 quarters, and 15 support buildings. Training activity is observed immediately north, south, and approximately 0.5 nm east of the barracks area. No change in facilities is observed between [REDACTED] [REDACTED] photography.

Figure 45B

Chia-Lai-Shih probable barracks area is located on the east edge of Chia-Lai-Shih at 19 43N-109 42E. Facilities include 2 administration buildings, 16 probable barracks, one monitor-roof probable maintenance building, 3 possible vehicle sheds, 20 support buildings, a water tower, and an athletic field. No significant change to the installation is observed from [REDACTED]

Figure 45C

A possible barracks area is located on the NW edge of Tung-Fang at 19 03N-108 56E. Facilities include 2 administration buildings, 4 barracks, 3 probable barracks, 4 storage buildings, 18 support buildings, and an athletic field. A small area containing 4 buildings is joined to the main area by a road. No significant change is observed between [REDACTED] [REDACTED]

Figure 45D

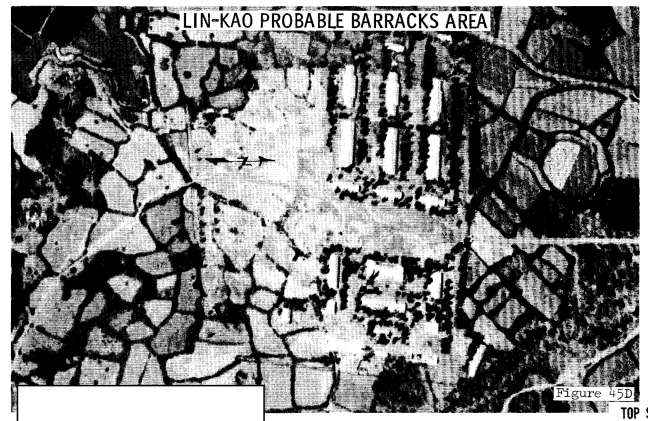
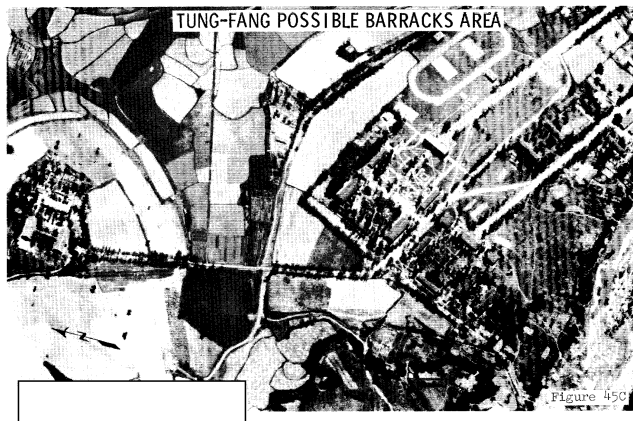
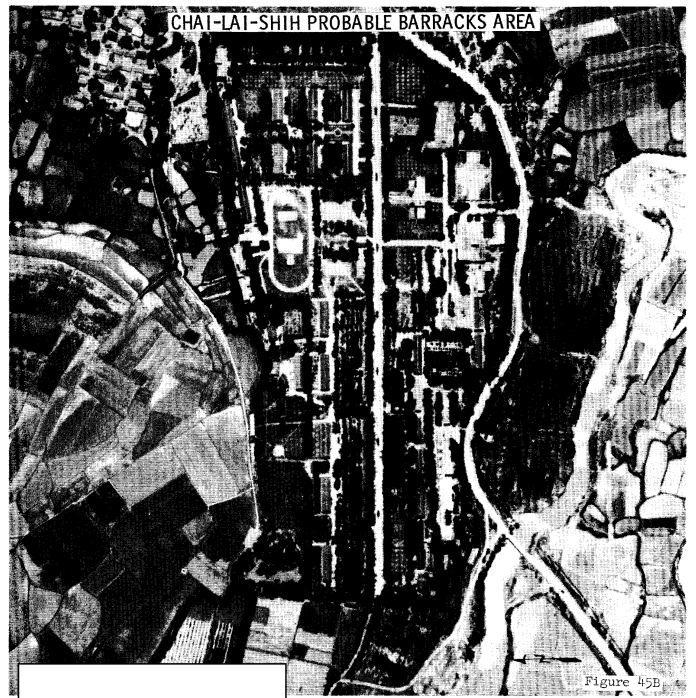
A probable barracks area is located 7 nm SW of Lin-Kao at 19 52N-109 33E. Facilities include one administration building, 8 probable barracks, and 17 support buildings. No change in facilities is observed between [REDACTED] [REDACTED]

TOP SECRET [REDACTED] [REDACTED]

25X1
25X1

TOP SECRET

Approved For Release 2006/02/07 : CIA-RDP02T06408R001200010034-0
BARRACKS AREAS - WEST COAST



25X1

25X1

25X1

25X1
25X1

TOP SECRET

Approved For Release 2006/02/07 : CIA-RDP02T06408R001200010034-0

Approved For Release 2006/02/07 : CIA-RDP02T06408R001200010034-0

[] TOP SECRET []

CIA IMAGERY ANALYSIS DIVISION

[] CIA/PIR-6/185

VI. Storage Areas

Storage areas associated with other types of activity have been reported under that activity (Airfield, Naval Bases, Military Installations).

Figure 46A

A storage area is under construction 7 nm NNE of Yu-Lin at 18 22 20N-109 37 00E. Facilities include 9 probable quarters, 3 large storage buildings, 7 storage buildings under construction, 3 cleared areas where storage buildings will probably be built, 2 large vehicle sheds, and 20 support buildings. Two probable quarters and the 2 vehicle sheds under construction were observed on [] All other buildings have been constructed since []

Figure 46B

Yu-Lin Ammunition Depot Ya-Hsien SE PUG is located 3.5 nm WSW of Yu-Lin at 18 16 40N-109 29 50E. Facilities include 3 large probable ammunition storage bunkers, [] entrances under construction, and 5 support buildings. A probable tank/assault gun firing range is located on the NW side of the hill. The 2 probable cave entrances under construction were not present on [] photography and the road leading to the center of the hill has been improved since [] Seven buildings which may be associated with the cave excavating have also been added since []

Figure 46C

Yu-Lin explosives storage area is located 10 nm NNE of Yu-Lin at 18 22 20N-109 37 35E. Facilities include 7 explosives storage buildings and 3 support buildings located along a looped road in a ravine. A probable support area 0.5 nm north contains 3 probable barracks and 9 support buildings.

TOP SECRET [] []

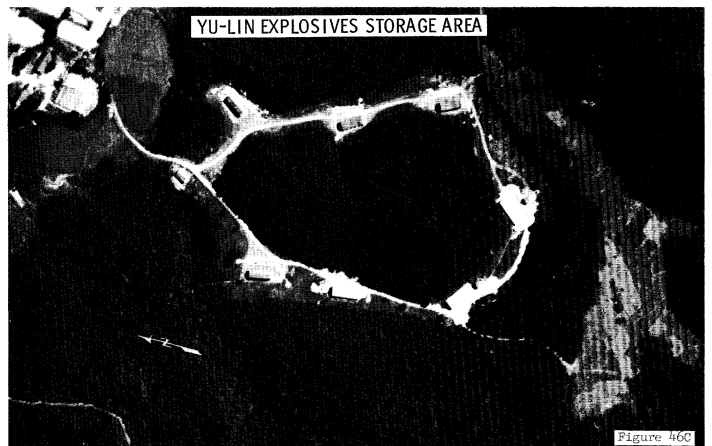
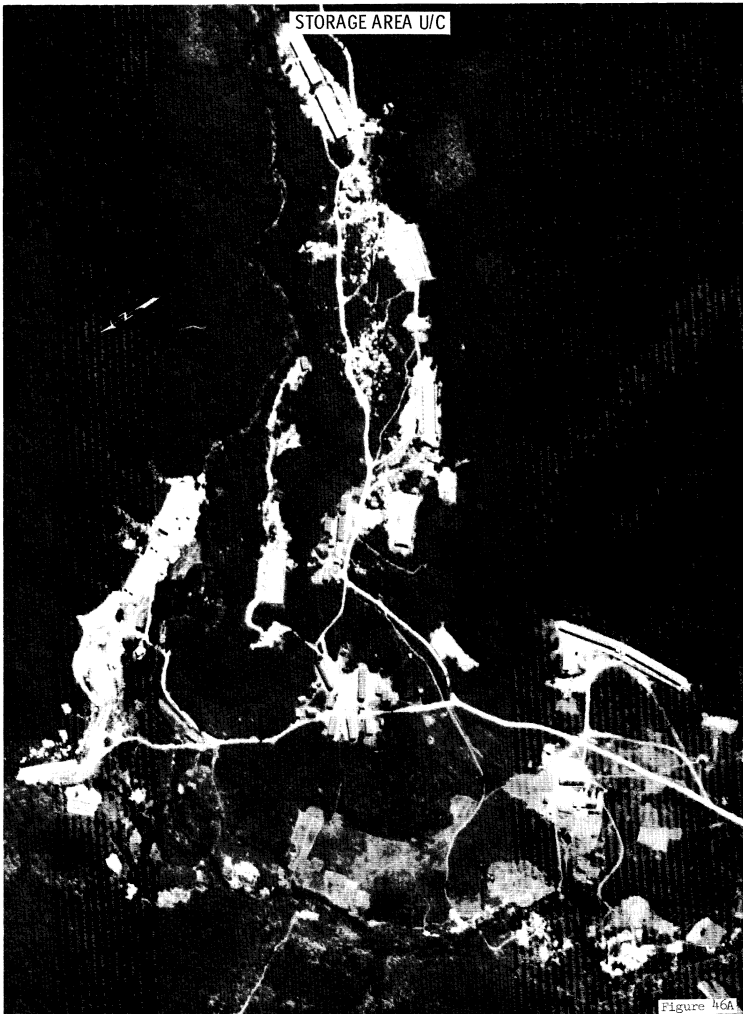
25X1
25X1

TOP SECRET [redacted]

Approved For Release 2006/02/07 : CIA-RDP02T06408R001200010034-0

[redacted]
CIA/PTR-67185

25X1



25X1

[redacted]

TOP SECRET [redacted]

25X1
25X1

[] TOP SECRET []
CIA IMAGERY ANALYSIS DIVISION CIA/PIR-67185

Figure 47A

A probable transportation motor pool is located 2.5 nm NW of Yu-Lin at 18 15 35N-109 33 40E. Facilities include 2 barracks, 5 vehicle sheds, 2 support buildings, and 3 revetted excavations containing at least 20 horizontal POL tanks. Nine other tanks are observed in the area. Two other buildings with a possible POL function are located directly SW of the main area. Six POL tanks are observed adjacent to one of the buildings. Vehicle parking cuts are located in the hillsides and 10 vehicle parking excavations are situated around the motor pool. Four cargo trucks are observed in the motor pool on [] photography.

Two vehicle sheds and the horizontal tank POL area were observed under construction on [] photography. The vehicle parking excavations have been added since [] and 16 tanks were observed in open storage by the 2 buildings with the possible POL function on the [] coverage.

Figure 47B

A storage area is located 3 nm north of Yu-Lin at 18 16 35N-109 31 35E. Facilities include one administration building, 4 barracks, a separately secured vehicle shed, and 6 support buildings. Three storage buildings, one possible storage building under construction, and a vehicle park are located 0.5 nm south. Fourteen ZIL 150 and 8 GAZ 51 cargo trucks are observed in the vehicle park on [] coverage. Five support buildings and a suspect POL storage area have been constructed since []

Figure 47C

A probable storage area under construction is located 14 nm NE of Yu-Lin at 18 23N-109 41E. Facilities include 4 probable quarters, 6 probable vehicle sheds, 3 storage buildings, and 10 support buildings. The 3 storage buildings were observed under construction on [] photography. Three FA pieces and heavy scarring are observed on [] coverage. The scarring is probably an indication of more buildings to be constructed in the area.

TOP SECRET [] []

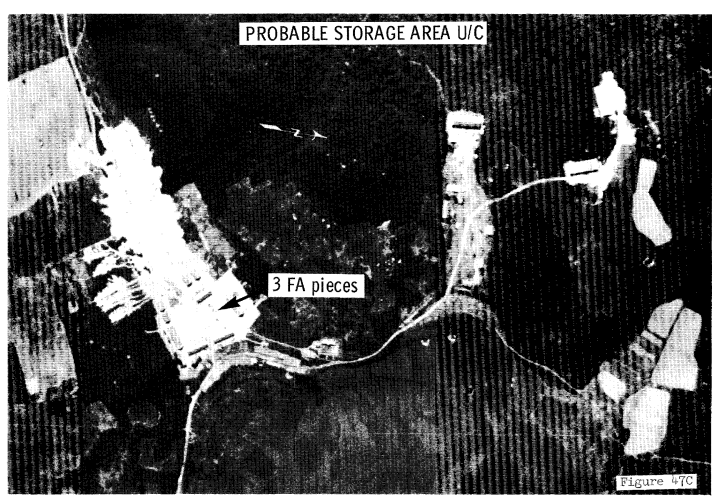
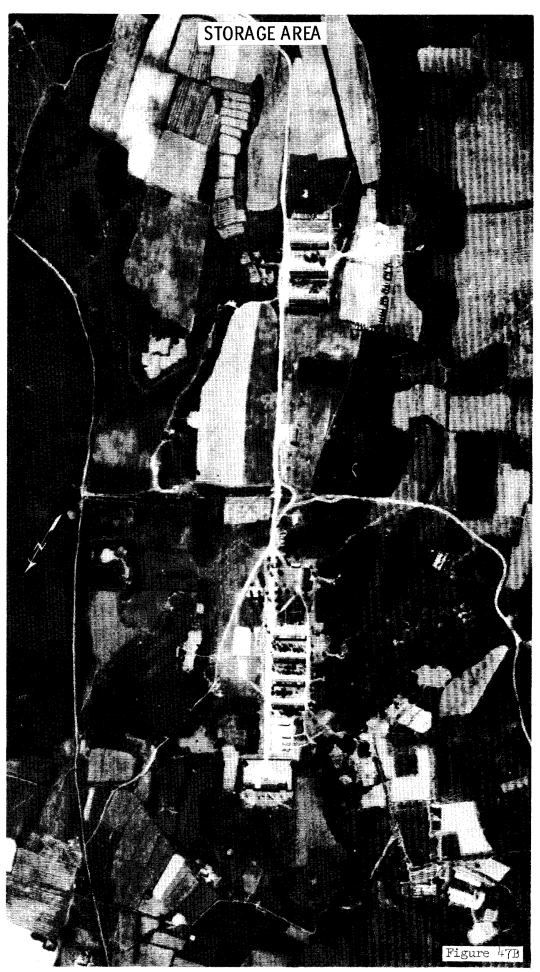
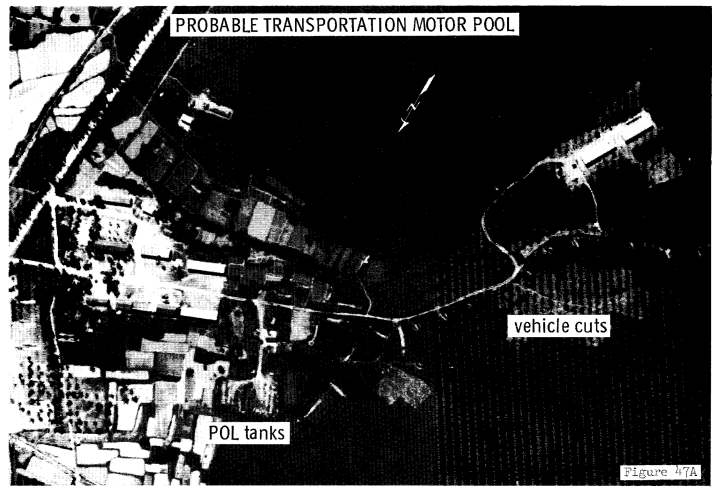
25X1
25X1

TOP SECRET []

STORAGE AREAS - VICINITY OF YUJIN
Approved For Release 2006/02/07 : CIA-RDP02T06408R001200010034-0

[]
CIA/PIR-67185

25X1

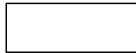


25X1

[]

TOP SECRET []

25X1
25X1



TOP SECRET

CIA/PIR-67185

CIA IMAGERY ANALYSIS DIVISION

Figure 48A

A storage area located 6 nm NNE of Yu-Lin at 18 18 25N-109 35 10E is under construction. Facilities include 8 probable quarters, 5 large storage buildings, 3 large storage buildings under construction, 6 probable vehicle sheds, one probable vehicle maintenance building, and 10 support buildings. Two cleared areas for new buildings are also observed. At least 45 possible horizontal POL tanks and 8 cargo trucks were observed on [redacted] coverage. Approximately 35 possible POL tanks, 8 ZIL 150 cargo trucks, 6 probable FA pieces, and 3 unidentified vehicles/pieces of equipment are observed on [redacted] coverage. All of the facilities with the exception of a few support buildings have been added since [redacted]

Figure 48B

A probable storage area under construction is located approximately 8 nm NE of Yu-Lin at 18 20N-109 36E. Facilities include 3 probable storage buildings and clearings for possibly 6 other buildings. All buildings and ground scarring have been added since [redacted]

TOP SECRET



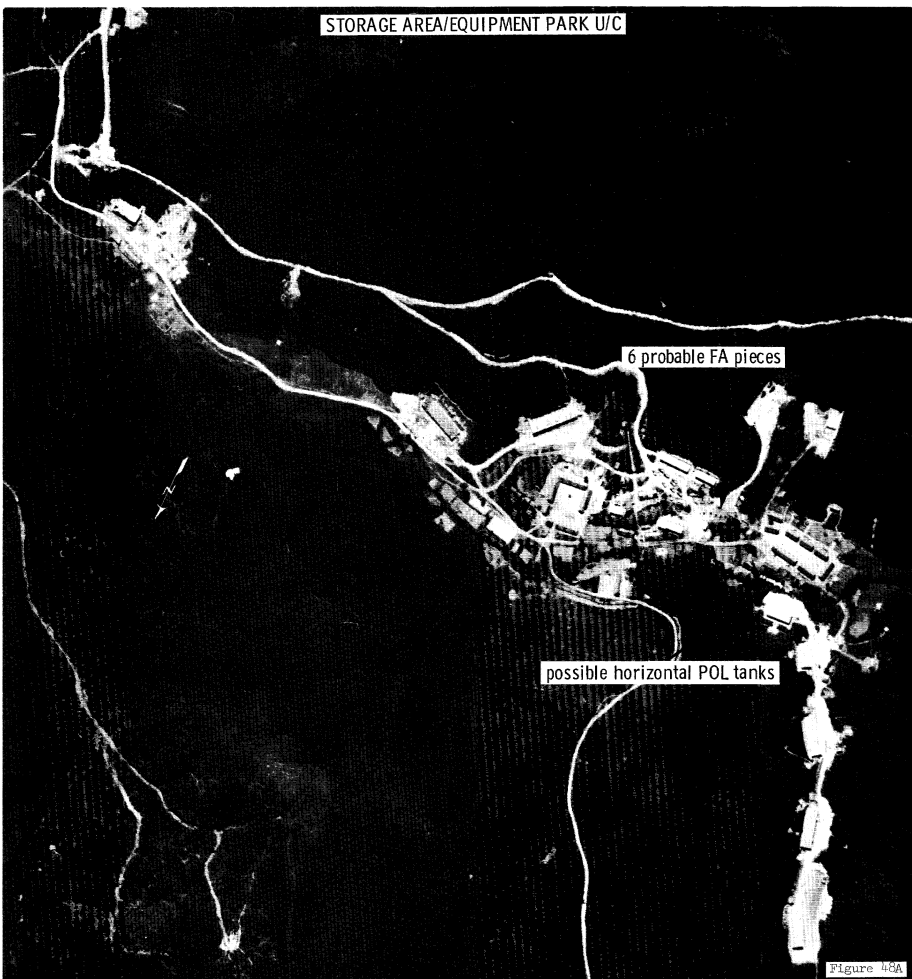
25X1
25X1

TOP SECRET

Approved For Release 2006/02/07 : CIA-RDP02T06408R001200010034-0
MILITARY STORAGE AREAS U/C - VICINITY OF YU-LIN

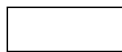
CIA/P I R-67185

25X1

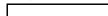


TOP SECRET

25X1
25X1



TOP SECRET 

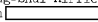

CIA/PIR-67185

CIA IMAGERY ANALYSIS DIVISION

Figure 49A

An explosives storage area which may be associated with Lung-Tan Army Barracks Tien-Tun-Yan is located near Ling-Kou-Shih at 19 19N-110 16E. Facilities include 2 barracks, 13 explosives storage buildings, and one support building. No recent coverage exists for comparative analysis purposes.

Figure 49B

A newly identified explosives storage area located at Chung-Wan 4 nm WNW of Ling-Shui Airfield at 18 32N-109 55E was observed under construction on  photography. Facilities include 3 storage buildings and a fourth under construction located at the base of a hill. A support building is located directly west of the storage buildings.

TOP SECRET 



25X1
25X1

TOP SECRET []

Approved For Release 2006/02/07 : CIA-RDP02T06408R001200010034-0

[]
CIA/PIR-67185

25X1



Figure 49A



Figure 49B

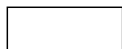
25X1

25X1

TOP SECRET []

25X1
25X1

Approved For Release 2006/02/07 : CIA-RDP02T06408R001200010034-0



TOP SECRET



CIA/PIR-67185

CIA IMAGERY ANALYSIS DIVISION

Figure 50A

Hai-Kou POL storage area is located 1.0 nm west of Hai-Kou Airfield at 20 01 00N-110 19 10E. Facilities include 8 large semiburied tanks and 3 medium tanks in a secured area. The facility probably serves the airfield. No changes to the facilities are observed since [redacted]

Figure 50B

A POL storage area is located one nm west of Shu-Chang at 20 01 35N-110 15 15E. The installation is probably double secured and contains 7 large POL tanks, 2 semiburied tanks, 2 large tanks possibly under construction, 3 possible storage buildings, a probable maintenance building, a power plant with a support building, and 4 other support buildings. Material in open storage is located in the east part of the installation. Two other probable associated buildings are located adjacent to the south side of the installation. No changes to the facilities are observed between [redacted]

Figure 50C

A POL storage area is located 0.6 nm SW of Shu-Chang at 20 00 55N-110 15 47E and contains 10 large semiburied tanks on the edge of a ravine. Small support buildings are located at the base of each tank and 2 other large support buildings are located in the ravine. On the east side of the valley, [redacted] photography revealed 12 small horizontal POL tanks in place in shallow excavations. On [redacted] photography these tanks were buried. This installation may service the Port and Naval Base facility.

TOP SECRET



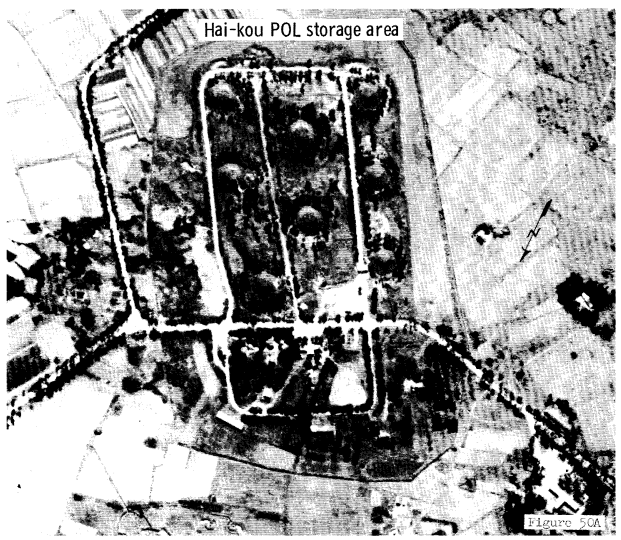
25X1
25X1

TOP SECRET []

POL STORAGE AREAS - HAI-KOU AND SHU-CHANG
Approved For Release 2006/02/07 : CIA-RDP02T06408R001200010034-0

[]
CIA/PIR-67185

25X1



25X1

[]

TOP SECRET []

25X1
25X1

TOP SECRET

Approved For Release 2006/02/07 : CIA-RDP02T06408R001200010034-0

TOP SECRET

TOP SECRET

Approved For Release 2006/02/07 : CIA-RDP02T06408R001200010034-0