

AIR

US Draw

KGBA-29909

16 Feb

Chief of Base, Palloch

Chief of Base, Berlin

Info: EE, COS

Operational/ZIPPER

UJDOWN

SENSITIZED

1. Forwarded under separate cover are:

- A. Photographs of the concealment device located in the V-70 apartment.
- B. A map indicating strong and weak reception areas in the vicinity of the transmission site.
- C. Photographs of V-70. For EE and COS only.
- D. Extra photographs of the concealment device for WURE. Before WURE left Berlin, the undersigned gave him one complete set of prints. Duplicate prints were not furnished him at that time because he wanted to give a set to V-70's mistress.

2. There have been no new developments in the operation. The listening post has not contacted us, and nothing concerning this case has appeared in telephone intercepts.

[]

Approved by: _____

Attachments:

B/C Atts. A, B, D, as stated

18 February 1956

BAF:shw

Distribution:

2 - FOB (w/s Atts. A, B, D)

3 - EE (w/s Atts. C)

3 - COS (w/s Att C)

1 cc destroyed

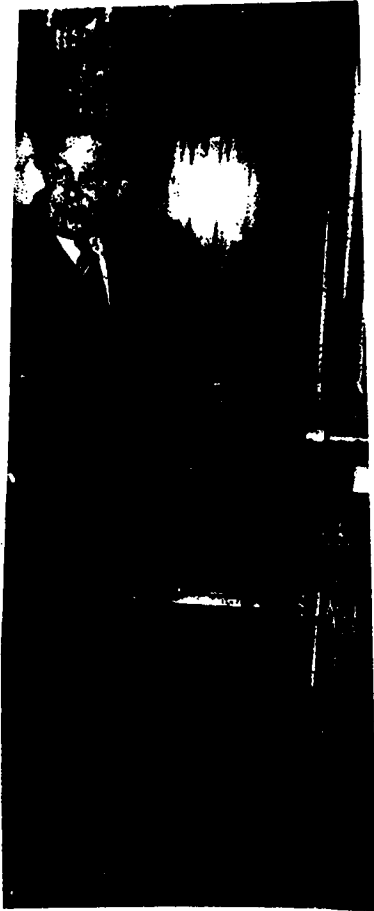
DECLASSIFIED AND RELEASED BY
CENTRAL INTELLIGENCE AGENCY
SOURCE METHOD EXEMPTION 3B2B
NAZI WAR CRIMES DISCLOSURE ACT
DATE 2007

SEARCHED
SERIALIZED
INDEXED
FEB 19 1956

SECRET (When Filled In)

PHOTO MOUNTING SHEET

SEE 201 FOLDER FOR ORIGINAL PHOTO(S)



V-70

C
DHTO
EGBA-29909
16 Feb 1956

31
P
2632 - 00000