

~~TOP SECRET~~



IMAGERY
ANALYSIS
DIVISION

APPROVED FOR RELEASE -
HISTORICAL COLLECTION
DIVISION - HR70-14
DATE: 05-10-2012

PIR

PHOTOGRAPHIC INTELLIGENCE REPORT

~~POSSIBLE TACTICAL SURFACE-TO-SURFACE~~
MISSILE SUPPORT FACILITY
UZHGOROD, USSR

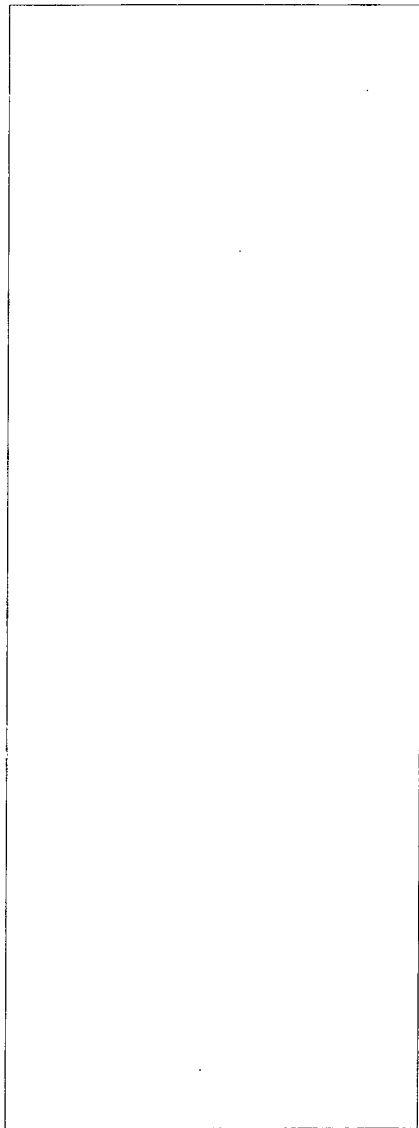
[Redacted]

CIA/PIR 67265

DATE APRIL 1966
COPY
PAGES 13

GROUP 1
Excluded from automatic
downgrading and declassification

~~TOP SECRET~~



~~TOP SECRET CHESS RUFF~~

CIA IMAGERY ANALYSIS DIVISION

CIA/PIR-67265

POSSIBLE TACTICAL SURFACE-TO-SURFACE

MISSILE SUPPORT FACILITY

UZHGOROD, USSR (48 36N-022 21E)

- 1 -

~~TOP SECRET CHESS RUFF~~

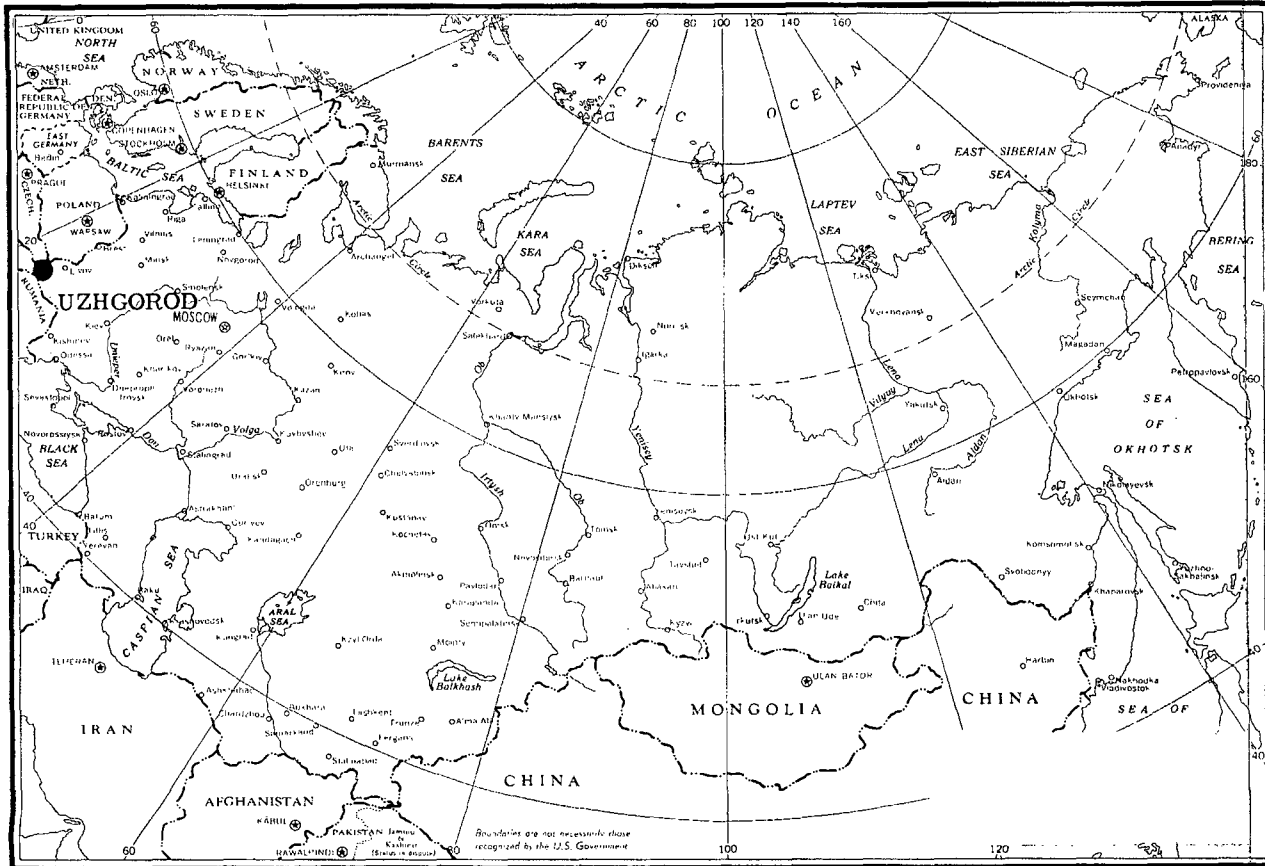


FIGURE 1

[REDACTED] ~~TOP SECRET CHESS RUFF~~ [REDACTED]

[REDACTED] CIA/PIR-67265

CIA IMAGERY ANALYSIS DIVISION.

PREFACE

A possible surface-to-surface tactical missile support facility is located 3 nm east of Uzhgorod¹. The possible support facility is located within an ammunition depot which has undergone extensive change since 1961.

Bunkers, bunkered buildings, a possible missile/warhead assembly and checkout area, new barracks, vehicle/equipment sheds, and a maintenance building were added between July 1961 and May 1964. A rail spur was constructed from Uzhgorod and new security fences were also added between July 1961 and May 1964. Possible SCUD missile support vehicles were observed on the May 1964 photography.

[REDACTED]

* 1. The installation is listed in the Bombing Encyclopedia as Uzhgorod Ammunition Depot Dravce, [REDACTED] located at 48 36 12N-022 21 52E.

~~TOP SECRET CHESS RUFF~~ [REDACTED]

[REDACTED]

~~TOP SECRET CHESS RUFF~~

[REDACTED]

[REDACTED]

CIA/PIR-67265

CIA IMAGERY ANALYSIS DIVISION

FUNCTIONAL AREAS (FIGURE 2)

The possible missile/warhead assembly and checkout facility consists of a separately secured area containing one building and a hardstand with a 40 foot gantry crane. The internal security, crane, and hardstand bear resemblance to those observed at the surface-to-surface tactical missile support facility at [REDACTED]

The possible fuel storage area consists of a possible pump house associated with possible underground fuel tanks along a looped road. The facility does not appear to be separately secured.

[REDACTED]

A vehicle/equipment storage and maintenance area is located adjacent to the east side of the barracks and administration area. The area consists of 4 vehicle/equipment storage buildings (see Figure 3), a maintenance building, and a support building. The maintenance building appears similar to the irregularly-shaped maintenance building in the barracks and administration area at [REDACTED]. Most of the vehicles and equipment observed on May 1964 and more recent coverage have been located in this area.

The barracks and administration area consists of 6 barracks (see Figure 3), 8 quarters, an administration building, 2 probable vehicle sheds, a probable storage building, a possible messhall, a possible theater, a possible guardhouse, a probable guardhouse, and 5 support buildings. The personnel capacity has been periodically increased by the addition of new barracks.

The transloading area consists of a loop road adjacent to the railroad sidings. This area appears to be separately secured from the main depot area.

Vehicles and equipment

[REDACTED] is the only mission on which vehicles and equipment are discernible.

- 3 -

~~TOP SECRET CHESS RUFF~~

[REDACTED]

[REDACTED]

POSSIBLE TACTICAL SURFACE-TO-SURFACE MISSILE SUPPORT FACILITY



FIGURE 2

~~TOP SECRET CHESS RUFF~~

CIA/PIR-67265

CIA IMAGERY ANALYSIS DIVISION

Vehicle/equipment storage and maintenance area

7 possible SCUD resupply transport trailers with prime movers
2 possible van trucks with trailers
Approximately 45 trucks

Vehicle park (adjacent to possible missile/warhead assembly
and checkout area)

2 possible SCUD resupply transport trailers with prime movers
12 possible van trucks

Barracks and administration area

Approximately 30 U/I vehicles
5 possible KRAZ-214 cargo trucks

Special storage area

2 U/I pieces of equipment

- 4 -

~~TOP SECRET CHESS RUFF~~

BUILDING ANALYSIS (FIGURE 3)

NUMERICAL DESIGNATION

FUNCTION

- 1. Ammunition storage buildings
- 2. Ammunition storage building
- 3. Probable ammunition storage buildings
- 4. Probable explosives storage buildings
1 support building (unrevetted)
- 5. Bunkered building
- 6. Bunker app
- 7. Bunkered building
- 8. Bunker app
- 9. Possible missile/warhead assembly
and checkout building (with gantry
crane on hardstand - 40' long)
- 10. Vehicle/equipment storage buildings
- 11. Support buildings
- 12. Maintenance building
- 13. 2 support buildings associated with
possible underground fuel storage
- 14. Support building
- 15. Fuel storage (3 horizontal tanks)
- 16. Probable security building
- 17. Heat/power plant
- 18. Barracks
- 19. Quarters
- 20. 3 support buildings
- 21. Probable vehicle sheds (separately
secured)
- 22. Probable storage building
- 23. Support building
- 24. Possible guard house
- 25. Support building
- 26. Possible messhall
- 27. Possible theater
- 28. Administration building
- 29. Probable guardhouse
- 30. Gatehouse
- 31. Probable storage building
- 32. Probable storage building
- 33. Support building
- 34. Support building
- 35. Support building

POSSIBLE TACTICAL SURFACE-TO-SURFACE MISSILE SUPPORT FACILITY

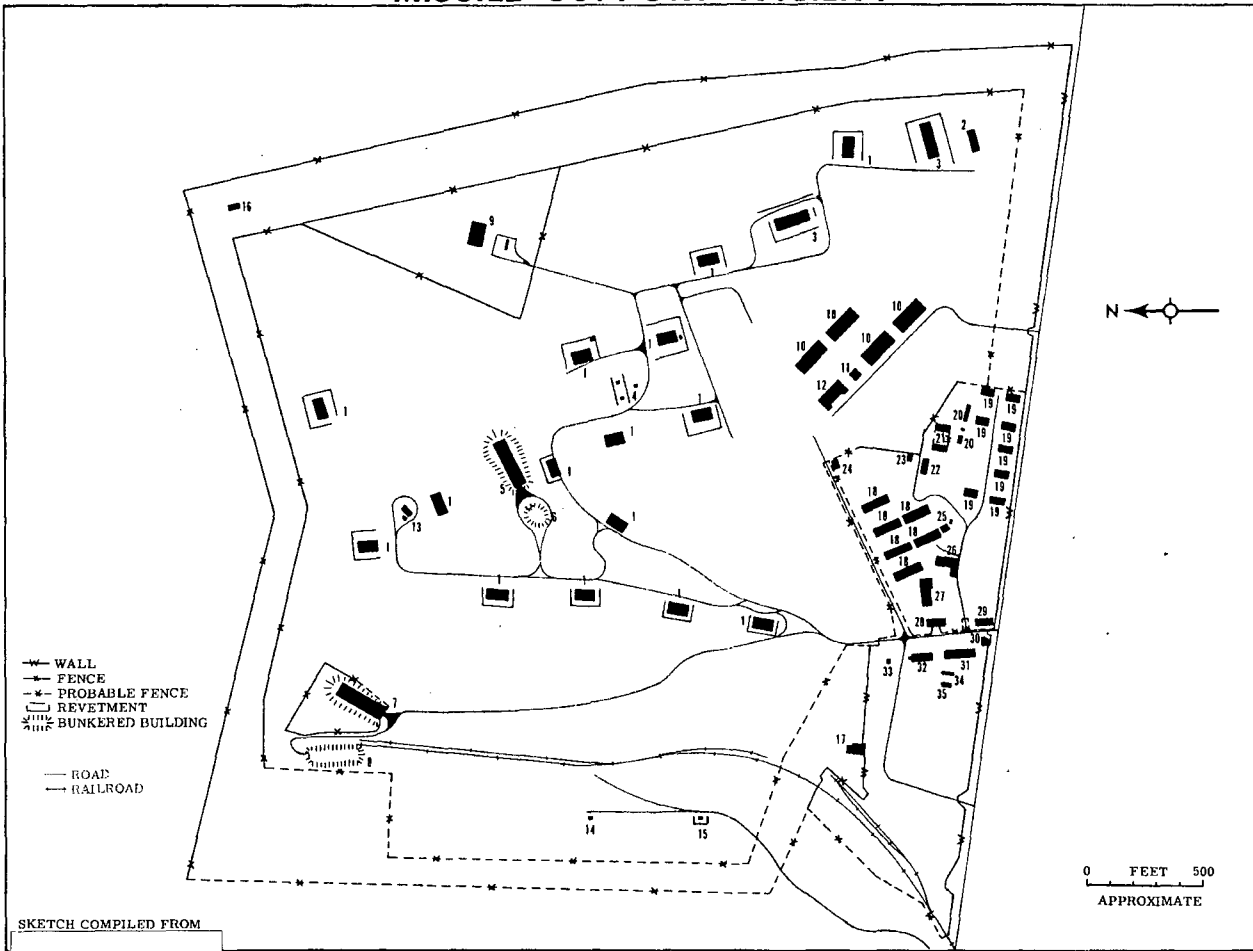


FIGURE 3

[REDACTED]

~~TOP SECRET CHESS RUFF~~

[REDACTED]

CIA IMAGERY ANALYSIS DIVISION

[REDACTED]

CIA/PIR-67265

SECURITY (FIGURE 3)

The depot is entirely double secured. The north and east sides have a double fence, the west side is probably secured by 2 fences, and the south side, which faces the road, has a wall adjacent to the road and a probable inner fence.

The barracks and administration area appears to be separately secured from the depot as does the transloading facility, heat/power plant, and the probable conventional storage building area. The possible missile/warhead assembly and checkout area (numerical designation 9) is separately secured by a fence and one of the bunkered buildings (numerical designator 7) is also separately secured.

Additional security measures may exist but the lack of recent good quality photography precludes the identification of new external or internal security. Coverage [REDACTED] February 1965 did reveal, however, that the vegetation was being thinned out between the perimeter fences in the north-west part of the installation.

- 6 -

~~TOP SECRET CHESS RUFF~~

[REDACTED]

[REDACTED]

[REDACTED] TOP SECRET CHESS RUFF [REDACTED]

CIA IMAGERY ANALYSIS DIVISION

[REDACTED] CIA/PIR-67265

SEQUENCE OF CONSTRUCTION (FIGURE 4)

Photography [REDACTED] July 1961 revealed that the installation consisted of revetted ammunition storage buildings and a small support area.

New construction was observed [REDACTED] August 1962 coverage. A rail spur between the depot and Uzhgorod was under construction. The possible missile/warhead assembly and checkout facility appeared under construction and the security around the facility was first observed. Ground scarring was discernible in the bunker areas. Four new barracks in the barracks and administration area had been added and the other construction in the area was observed.

Photography [REDACTED] May 1964 (Figure 2) revealed that construction of the bunkers, possible missile/warhead assembly and checkout facility, a possible fuel storage area, and the rail line had been completed. Two vehicle/equipment buildings and a maintenance building had also been built between August 1962 and May 1964.

Between May 1964 and [REDACTED] February 1965, two additional vehicle/equipment buildings were constructed and photography [REDACTED] April 1966 (Figure 3) revealed that 2 new barracks were added.

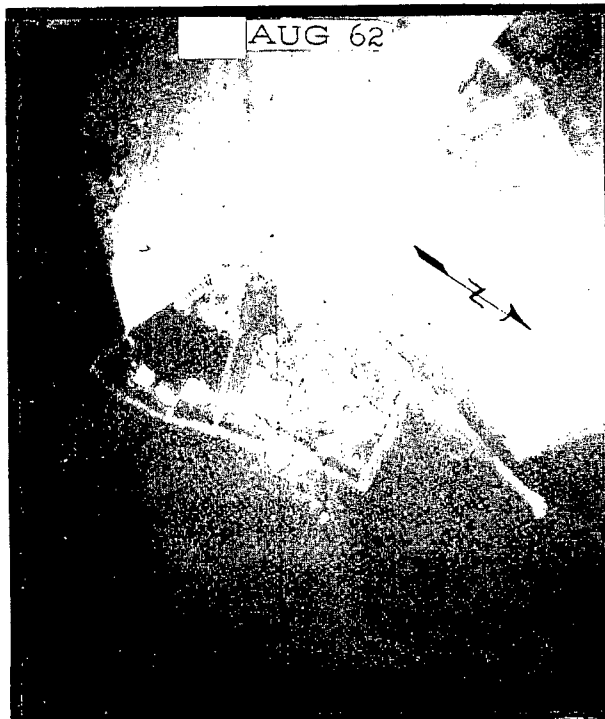
- 7 -

TOP SECRET CHESS RUFF [REDACTED] [REDACTED]

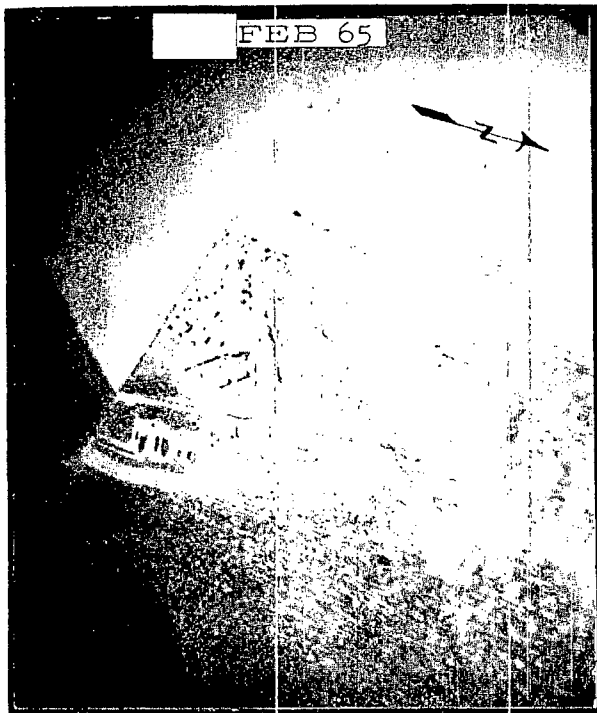
SEQUENCE OF CONSTRUCTION
JULY 1961 - APRIL 1966



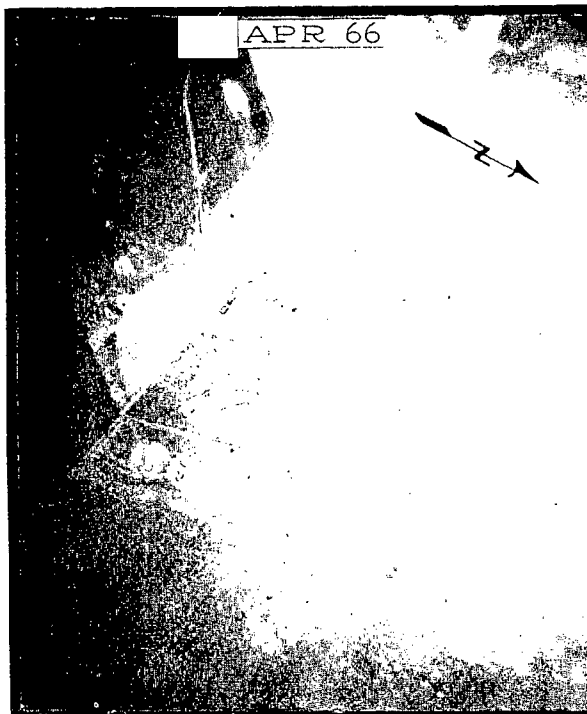
The installation at this date was comprised of the ammunition storage buildings and a small support area.



The rail line, possible missile/warhead assembly and checkout area, and bunkers are U/C. The 4 large barracks and other support buildings have been constructed.



Between May 1964 and February 1965 two new vehicle/equipment sheds were added and the trees between the new security fences in the NW corner were thinned out.



Between February 1965 and April 1966 two new large barracks were added.

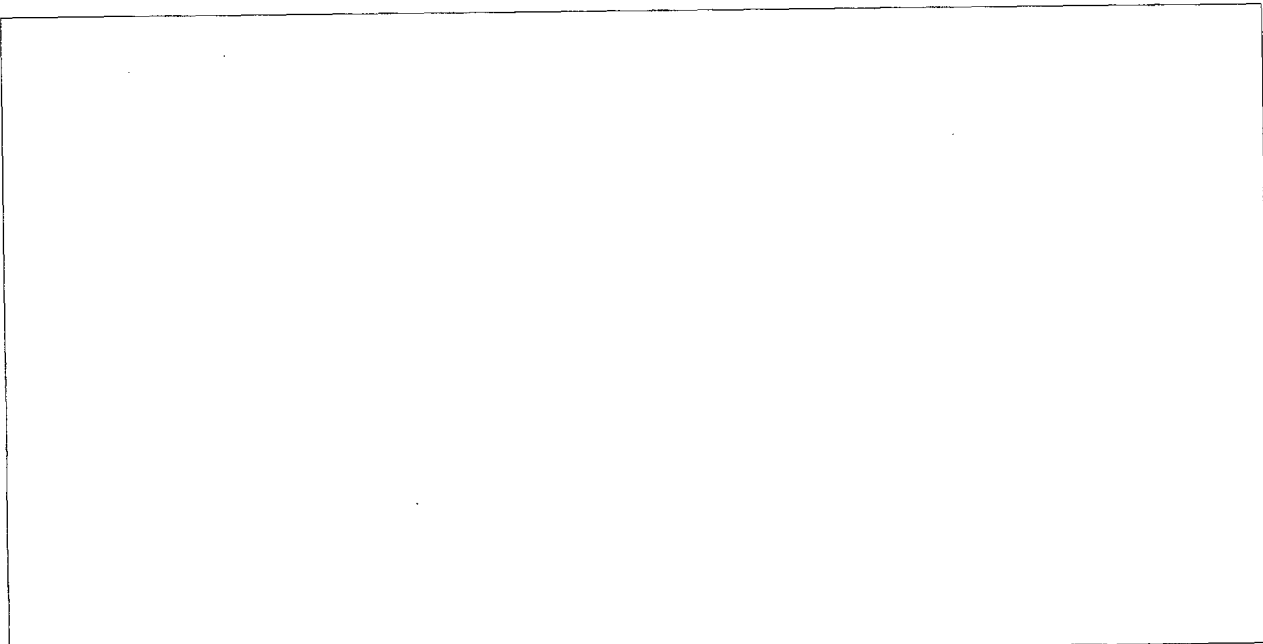
FIGURE 4

~~TOP SECRET CHESS RUFF~~

CIA IMAGERY ANALYSIS DIVISION

CIA/PIR-67265

REFERENCES



MAPS OR CHARTS

US Air Target Chart, Series 200, Sheet 0232-24HL, 2nd Edition, August 1963 (SECRET)

DOCUMENTS

CIA. PIC/JB-18/61, Probable Missile-Related Activity in Carpathian MD, USSR, March 1961 (TOP SECRET RUFF)

JARIC. UK/KH/61/7, Training Area-Explosives Storage and Barracks, Uzhgorod, 17 November 1961 (TOP SECRET RUFF)

NPIC. R-813/64, Military Storage Site Near Uzhgorod, USSR, September 1964 (TOP SECRET RUFF)

NPIC. R-76B/64, Uzhgorod Ammunition Depot Dravce, Dravce, USSR, September 1964 (TOP SECRET RUFF)

- 8 -

~~TOP SECRET CHESS RUFF~~

~~TOP SECRET CHESS RUFF~~
NO FOREIGN DISSEM

CIA IMAGERY ANALYSIS DIVISION

CIA/PIR-67265

REFERENCES

DOCUMENTS

REQUIREMENT

C-RR6-83, 386

CIA/IAD PROJECT

30886-6

- 9 -

~~TOP SECRET CHESS RUFF~~

~~TOP SECRET~~



~~TOP SECRET~~

