

~~TOP SECRET~~



I
MAGERY
A
NALYSIS
D
IVISION

PIR

PHOTOGRAPHIC INTELLIGENCE REPORT

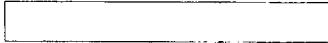
APPROVED FOR RELEASE
- HISTORICAL
COLLECTION DIVISION -
HR70-14
DATE: 05-10-2012

~~VITAL INFORMATION COPY~~

SOVETSK ARMY BARRACKS TAURAGE SW
BALTIC MILITARY DISTRICT, USSR



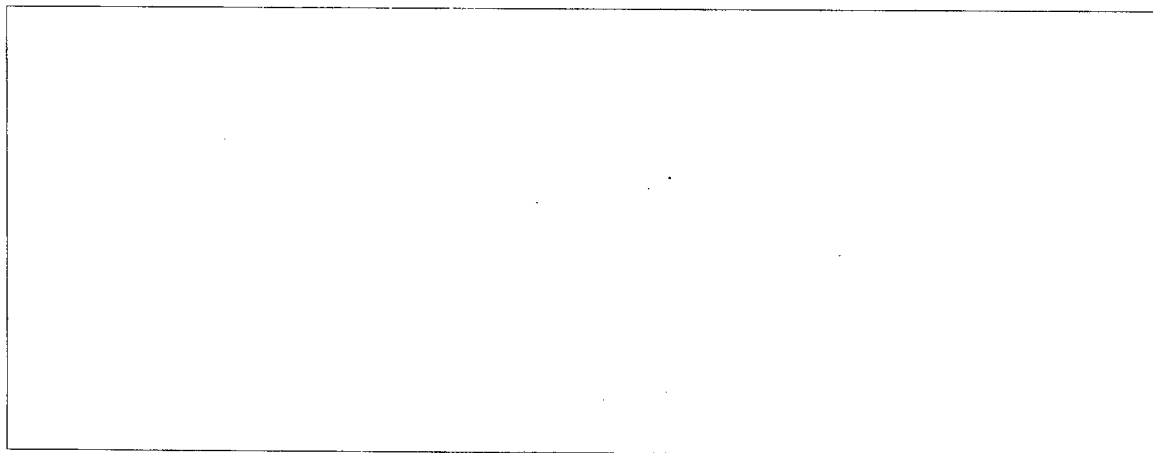
CIA/PIR 67087



DATE NOVEMBER 65
COPY 50
PAGES 7

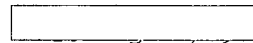
GROUP 1
Excluded from automatic
downgrading and declassification

~~TOP SECRET~~





~~TOP SECRET RUFF~~



CIA/PIR-67087

CIA IMAGERY ANALYSIS DIVISION

SOVETSK ARMY BARRACKS TAURAGE SOUTHWEST
55 14N-022 15E
BALTIC MILITARY DISTRICT, USSR

- 1 -

~~TOP SECRET RUFF~~



CIA IMAGERY ANALYSIS DIVISION

The following alphabetical designators are used to delineate functional areas within military installations.

- A. Billeting area
- B. Vehicle storage/maintenance
- C. General storage area
- D. Ammunition storage
- E. Miscellaneous (hospitals, prisons, POL, personnel training facilities and unidentified facilities)
- F. Small arms range
- G. Driver training area
- H. Support
- J. Tank/assault gun range
- K. Flat trajectory range
- L. Sub caliber range
- M. APC range
- N. Combined arms range
- P. Artillery training area
- Q. Infantry training area
- R. Special or unidentified area

- NOTE:
- 1. The absence of one or more alphabetical designators indicates that those functional areas were not observed at that particular installation.
 - 2. Lower case letters (i.e., Ba) are used to delineate more than one area of a particular functional category.
 - 3. Numbers are used with the alphabetical designators in some instances to identify vehicles or groups of vehicles within a functional area (i.e., Ba 1).

~~TOP SECRET RUFF~~

CIA/PIR-67087

CIA IMAGERY ANALYSIS DIVISION

SOVETSK ARMY BARRACKS TAURAGE SOUTHWEST

FUNCTIONAL AREAS

Aa. Billeting Area (Figure 2)

1 Multistory probable barracks/administration	@ 290' X 45'
1 Probable combination messhall and support building (irregular in shape)	@ 440' X 50'
1 Multistory possible administration/classroom building	@ 125' X 55'
4 Storage/support buildings	
3 FAGOT/FRESCO static display aircraft	

Ab. Billeting Area (Figure 2)

10 Multistory probable barracks	7@ 120' X 35'
	2@ 200' X 55'
	1@ 160' X 35'
	2@ 70' X 40'
2 Probable quarters buildings	
8 Storage/support buildings	
1 Water tower	
1 Building under construction	

Ba. Vehicle and Equipment Storage/Maintenance Area (Figure 2)

6 Probable vehicle/equipment storage sheds	2@ 250' X 35'
	1@ 250' X 65'
	1@ 210' X 35'
	1@ 210' X 55'
	1@ 175' X 35'
3 Probable maintenance buildings	1@ 175' X 85'
	1@ 165' X 55'
	1@ 100' X 55'
	@ 175' X 65'
1 Unidentified building (separately secured)	
2 Small support buildings	
Vehicles - 16 unidentified	

Bb. Vehicle and Equipment Storage/Maintenance Area (Figure 2)

6 Probable vehicle/equipment storage sheds	2@ 150' X 40'
	3@ 100' X 35'
	1@ 70' X 40'
3 Storage/support buildings	

- 3 -

~~TOP SECRET RUFF~~

~~TOP SECRET RUFF~~

CIA/PIR-67087

CIA IMAGERY ANALYSIS DIVISION

H. Support Area (Figure 2)

A partially secured area containing 3 probable storage/support buildings.

K. Possible Flat Trajectory Range (Figure 1)

This area contains a possible flat trajectory sub caliber/small arms firing range with an approximate length of 700 ft. (200 plus meters). Four support buildings are located at this facility.

R. Unidentified Area (Figure 2)

Area contains one small building of unidentified function and a possible open storage area with unidentified material.

P.I. REMARKS

Comparative photographic analysis indicates that no significant changes have occurred at this installation since November 1962. Approximately 5 small buildings were added during the comparative time period. The lack of adequate training facilities to support a line ground force unit i.e., extensive firing ranges, driver training courses, etc., plus the presence of static display aircraft, suggest that this facility may be utilized as a personnel technical training center. Possibly a large portion of the floor space in the "barracks type" buildings is utilized for classrooms.

All measurements have been made by the CIA/IAD project analyst. They should not be construed as being mensuration data compiled by the NPIC Technical Intelligence Division.

- 4 -

~~TOP SECRET RUFF~~

TOP SECRET RUFF

SOVIETSK ARMY BARRACKS TAURAGE SOUTHWEST

CIA/PTR-CASBZ

Taurage 2.5 km

See Figure 2

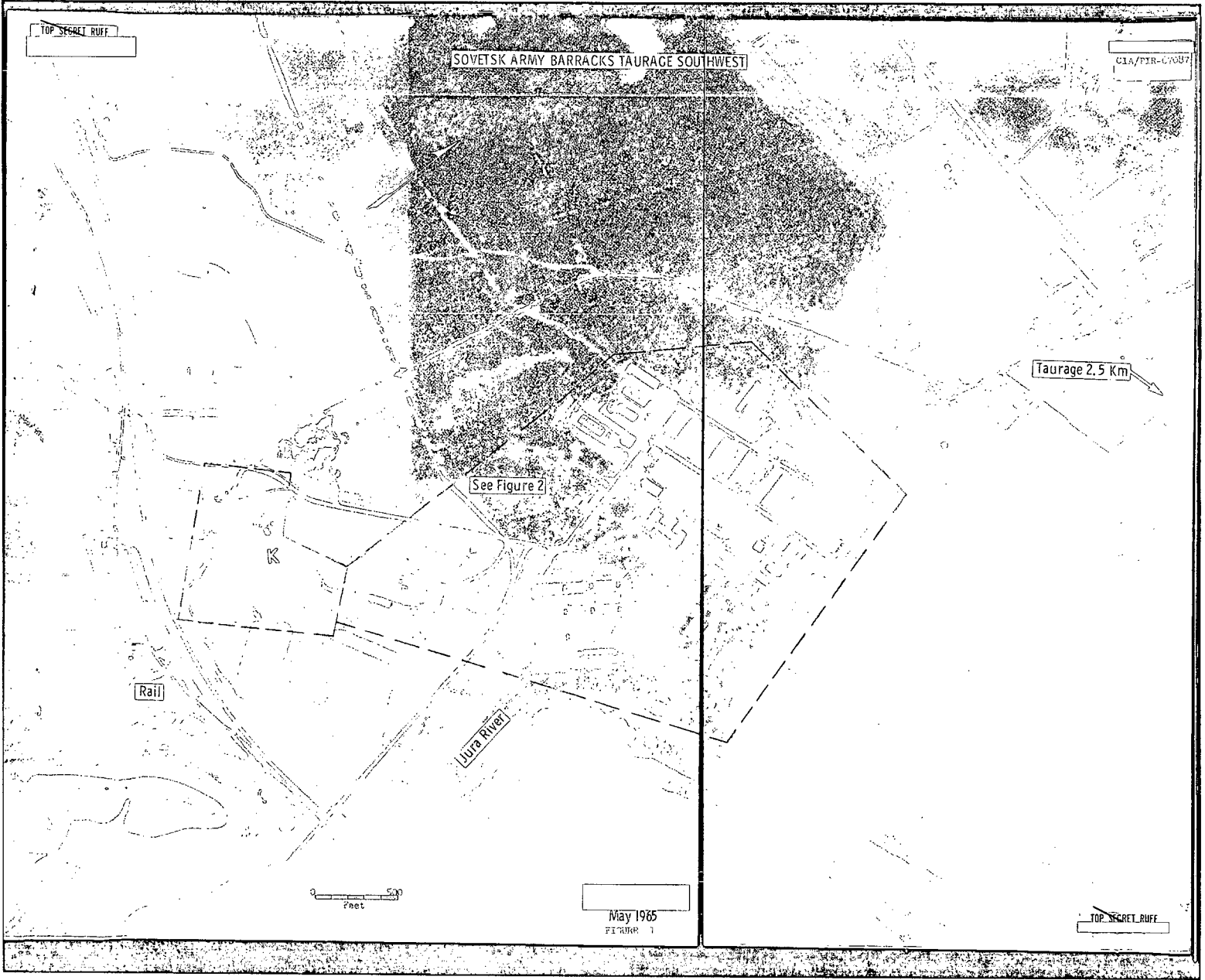
Rail

Uzva River

0 500 Feet

May 1985
PT 7000 1

TOP SECRET RUFF

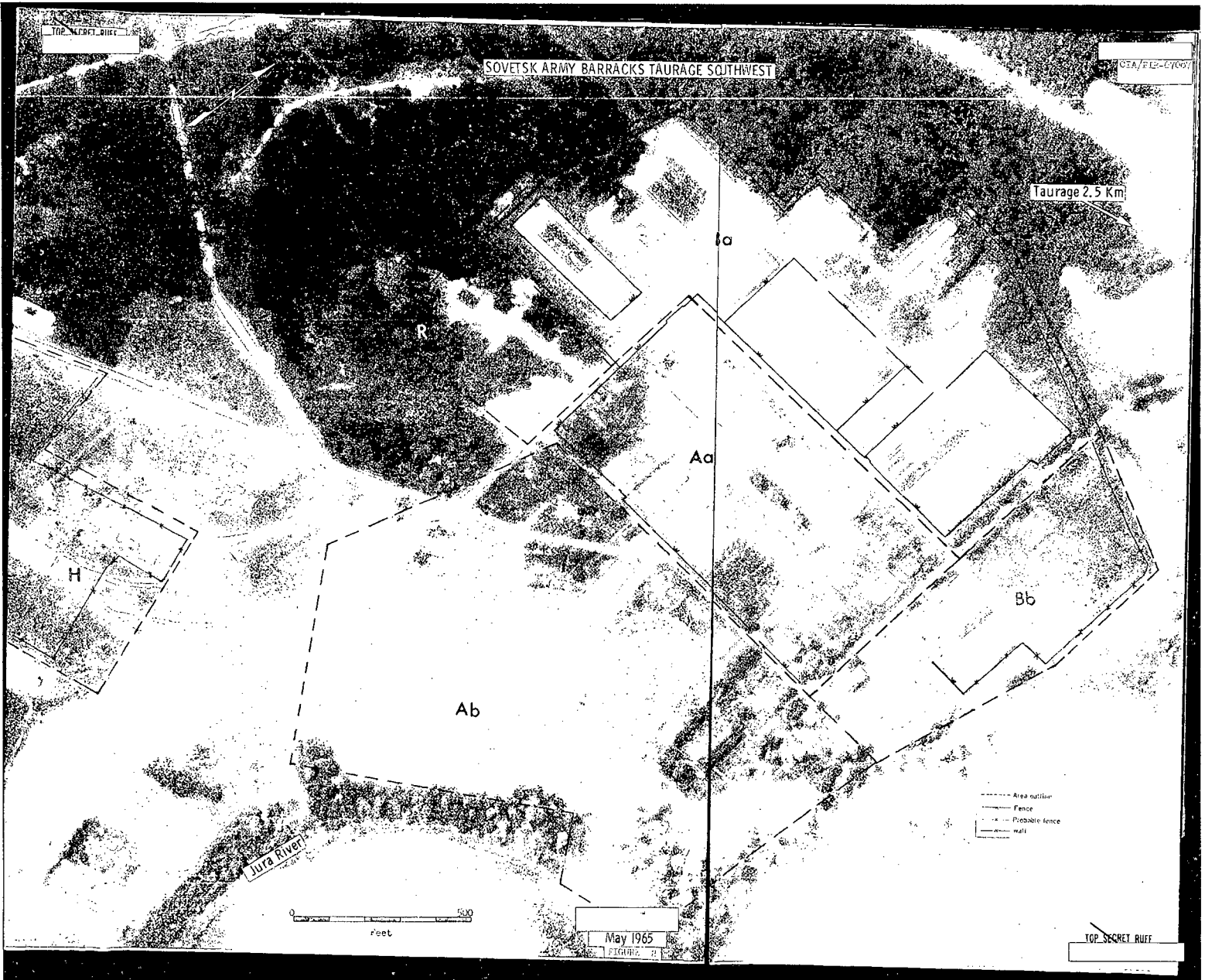


TOP SECRET RUFF

CEA/F12-47007

SOVETSK ARMY BARRACKS TAURAGE SOUTHWEST

Taurage 2.5 Km



Jura River

0 500 feet

May 1965

- Area outline
- Fence
- ... Probable fence
- wall

TOP SECRET RUFF

~~TOP SECRET RUFF~~

CIA/PIR-67087

CIA IMAGERY ANALYSIS DIVISION

REFERENCES

MAPS OR CHARTS

USATC, Series 200, Sheet 0168-1HL, 2nd Edition, July 1962 (SECRET)

DOCUMENT

NPIC/PIR, Soviet Military Order of Battle, April 1965,
(TOP SECRET RUFF)

REQUIREMENT

CIA/ORR C-RR5-82,756

CIA/IAD PROJECT

30042-6

- 5 -

~~TOP SECRET RUFF~~

~~TOP SECRET~~

~~TOP SECRET~~