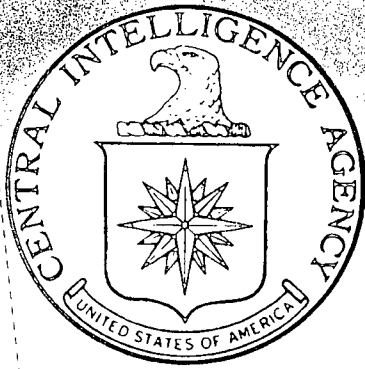


~~TOP SECRET~~



IMAGERY
ANALYSIS
DIVISION

PIR

PHOTOGRAPHIC INTELLIGENCE REPORT

APPROVED FOR
RELEASE - HISTORICAL
COLLECTION DIVISION
- HR70-14
DATE: 05-10-2012

VITAL RECORDS COPY

PALDISKI ARMY BARRACKS

KLOOGA WEST, USSR

(BALTIC MILITARY DISTRICT)



CIA/PIR 67053



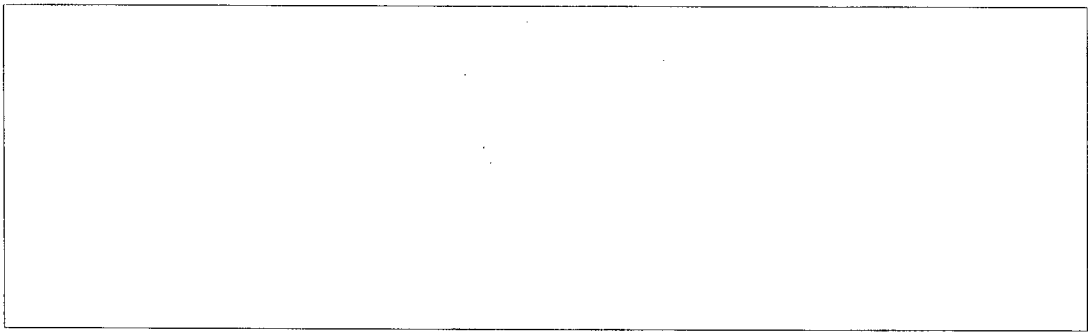
DATE September 1965

COPY 45

PAGES 10

GROUP 1
Excluded from automatic
downgrading and declassification

~~TOP SECRET~~



RECORD COPY	COPY NO.	PUB. DATE	LOCATION	MASTER	DATE RECEIVED	LOCATION
DISPOSITION DATE(S)				STOCK LEVEL	MINIMUM 1	MAXIMUM 10
CUT TO COPIES 0	DATE 1/72	CUT TO COPIES	DATE	COPIES DESTROYED		
CUT TO COPIES	DATE	CUT TO COPIES	DATE			
CUT TO COPIES	DATE	MASTER	DATE			

DATE			RECEIVED OR ISSUED	NUMBER OF COPIES			DATE			RECEIVED OR ISSUED	NUMBER OF COPIES		
MO.	DAY	YR.		REC'D	ISS'D	BAL	MO.	DAY	YR.		REC'D	ISS'D	BAL
8	15	68	Dist. Unit # 51-60	10		10							
6	12	72	DEST 51-60			0	W	K	G				

TITLE _____ SEC. CLASS. _____ LOCATION _____

25111

FORM 67052 Sept. 1965

~~TOP SECRET CHESS RUFF~~

CIA/PIR-67053

CIA IMAGERY ANALYSIS DIVISION

PALDISKI ARMY BARRACKS KLOGA WEST

(59 19N-024 13E)

(BAL TIC MILITARY DISTRICT)

- 1 -

~~TOP SECRET CHESS RUFF~~

~~TOP SECRET CHESS RUFF~~

CIA/PIR-67053

CIA IMAGERY ANALYSIS DIVISION

The following alphabetical designators are used to delineate functional areas within military installations.

- A. Billeting area
- B. Vehicle storage/maintenance
- C. General storage area
- D. Ammunition storage
- E. Miscellaneous (hospitals, prisons, POL, personnel training facilities and unidentified facilities)
- F. Small arms range
- G. Driver training area
- H. Support
- J. Tank/assault gun range
- K. Flat trajectory range
- L. Subcaliber range
- M. APC range
- N. Combined arms range
- P. Artillery training area
- Q. Infantry training area
- R. Special or unidentified area

- NOTE:
- 1. The absence of one or more alphabetical designators indicates that those functional areas were not observed at that particular installation.
 - 2. Lower case letters (i.e., Ba) are used to delineate more than one area of a particular functional category.
 - 3. Numbers are used with the alphabetical designators in some instances to identify vehicles or groups of vehicles within a functional area (i.e., Ba 1).

- 2 -

~~TOP SECRET CHESS RUFF~~

PALDISKI ARMY BARRACKS KLOOGA WEST, USSR

FUNCTIONAL AREAS

Aa. Billeting Area (Figure 3)

- 8 "C" Shaped multistoried probable barracks 270' x 65'
- 1 "C" Shaped possible barracks 190' x 35'
- 2 "T" Shaped probable messhalls 150' x 80'
- 3 Probable administration buildings 1@ 150' x 100'
- 2@ 80' x 60'
- 28 Storage/support buildings of varying sizes and shapes
- 6 Possible communications vans
- 1 Probable wall secured open storage area

Ab. Billeting Area (Figure 3)

This area contains more than 100 quarters-type buildings (average 50' x 25') probably occupied by families, one probable theatre, an athletic field, a secured probable storage area, and 5 multistoried probable apartment buildings. Recreational facilities are located at the lake. This area is well intergrated with the military installation.

Ba. Vehicle Storage/Maintenance (Figure 3)

- 3 Vehicle/equipment storage buildings 1@ 400' x 50'
- 1@ 350' x 40'
- 1@ 170' x 55'
- 200' x 40'
- 1 Building foundation
- 3 Small support buildings
- 1 Probable refueling area with 8 small support buildings (secured by a wall and a fence)

Vehicles - 6 probable trucks [redacted]
4 small unidentified vehicles

Bb. Vehicle Storage/Maintenance Area (Figure 3)

- 11 Vehicle/equipment storage buildings 1 "L" shaped 600' x 50'
 - 3@ 300' x 60'
 - 3@ 180' x 50'
 - 2@ 130' x 50'
 - 1@ 310' x 90'
 - 1@ 180' x 30'
- 10 Small support buildings

Vehicles - 62 canvas covered probable tanks
 21 trucks 30' in length
 20 miscellaneous vehicles

Bc. Vehicle Storage/Maintenance Area (Figure 3)

- 4 Probable vehicle/equipment storage buildings 1 "L" shaped 350' x 45'
 - 1@ 190' x 75'
 - 1@ 110' x 55'
 - 1@ 100' x 30'
- 6 Small support buildings (two secured)

Vehicles - 71 unidentified vehicles 50' in length
 (possible missile transporters)
 46 unidentified vehicles in varying sizes
 under 50' in length

Bd. Vehicle Storage/Maintenance Area (Figure 3)

- 1 Vehicle/equipment storage building 90' x 50'
- 2 Small support buildings

Vehicles - 7 small probable utility trucks

C. General Storage Area (Figure 3)

A secured storage area containing:

- 5 Probable storage buildings
 - 2@ 100' x 50'
 - 3@ 100' x 85'

D. Ammunition Storage (Figure 3)

A double secured area containing 11 small (under 20' in length) buildings of varying sizes and several small excavations - possibly utilized for ammunition storage.

Ea. Personnel training (Figure 3)

A personnel training area containing an obstacle course and numerous trenches.

Eb. Unidentified Installation (Figure 2)

An unidentified installation with 4 small possible storage buildings secured by 4 probable fences. Ten other miscellaneous buildings, 3 vehicle/equipment sheds, and 2 possible water towers are located in the area. In July of 1956 this area was an active vehicle driver training course. Several firing ranges were also adjacent to the area.

G. Driver Training Area (Figure 2)

A driver training area (probable tracked and wheeled) is located immediately NW of the installation in conjunction with the infantry training area.

J. Tank/Assault Gun Range (Figures 2 and 3)

A tank/assault gun range with two active vehicle runs and 4 long moving target runs is located on the SE edge of the complex. The maximum range is approximately 5,000'. The maximum vehicle run length is approximately 2,600'. Target runs on the adjacent flat trajectory range are also probably utilized by vehicles on this range. Two range support buildings are located at this range.

K. Flat Trajectory Range (Figures 2 and 3)

A possible flat trajectory range of undetermined length with possible calibration facilities. There are three range support buildings at this possible range.

L. Subcaliber Range (Figure 3)

A possible subcaliber firing range and possible grenade pit.

M. APC Range

See items "J" and "N" (Figure 3)

N. Combined Arms Range (Figure 3)

A combined arms range suitable for the firing of a variety of weapons. Maximum range is approximately 2,200'.

Q. Infantry Training Area (Figure 2)

This area contains numerous trenches and obstacles. (Also see item "G.")

PI COMMENTS

Comparative photographic coverage dating from July 1956 indicates that this installation has not undergone any significant change in physical form. Several minor changes have occurred with respect to building numbers and locations.

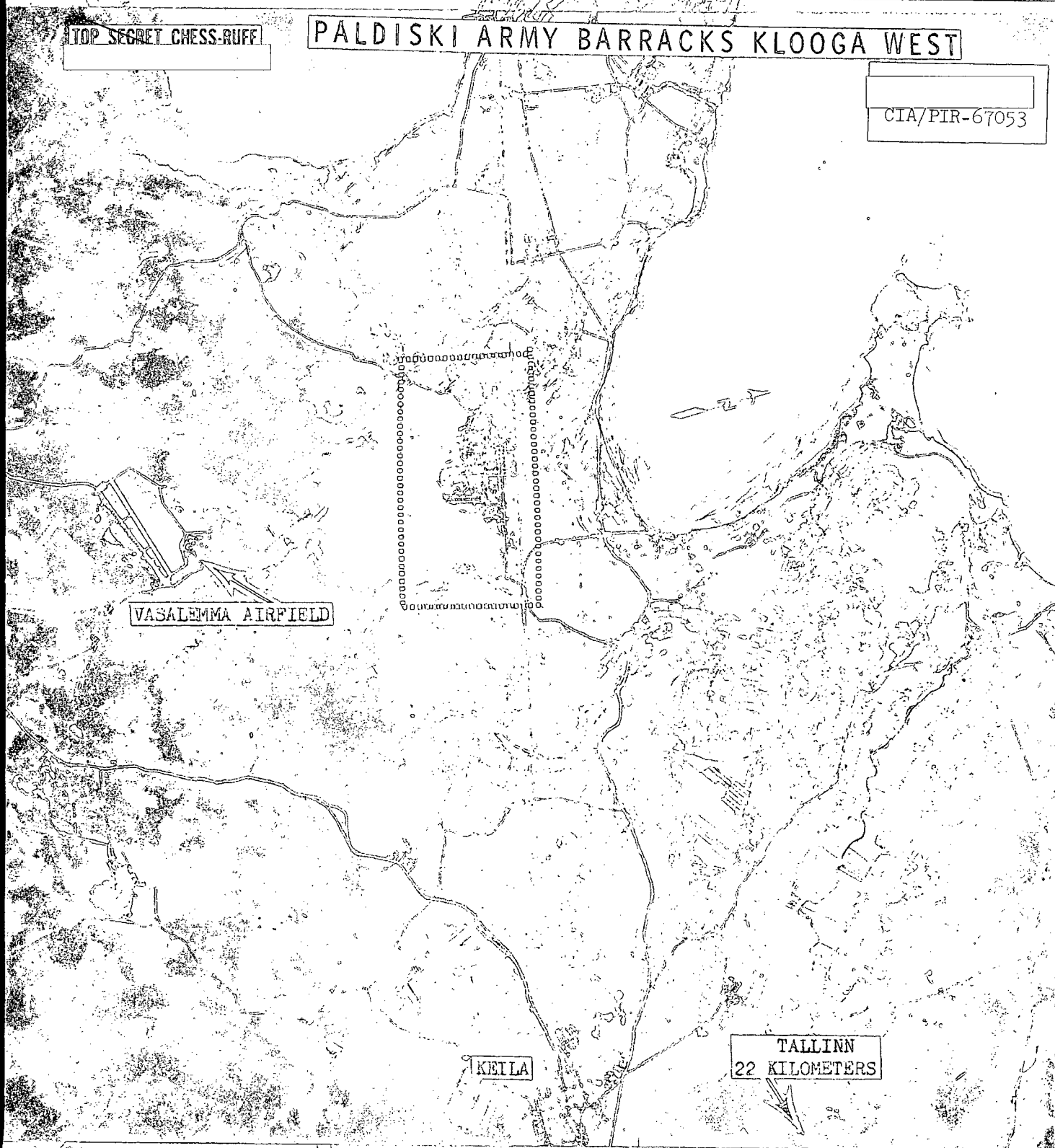
Training activity on the firing ranges, on the vehicle driver training course, and in the infantry training area has decreased since July of 1956. The two vehicle runs in the tank/assault gun firing area are the only training facilities appearing to have a heavy degree of activity. Of interest is the change that has occurred at the unidentified installation (Eb, Figure 2) since July 1956. This area was formerly an active vehicle driver training area. It now appears to be a highly secured possible storage area.

All of the training facilities show a decrease in activity since July of 1956. It appears possible that a part of this installation may now be associated with a missile activity, especially with the decrease in ground force activity and the current presence of possible missile associated equipment (see item "Bc").

TOP SECRET CMESS-RUFF

PALDISKI ARMY BARRACKS KLOOGA WEST

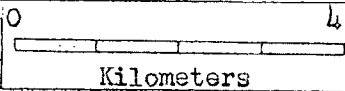
CIA/PIR-67053



VASALEMMA AIRFIELD

KEILA

TALLINN
22 KILOMETERS



APRIL 1965

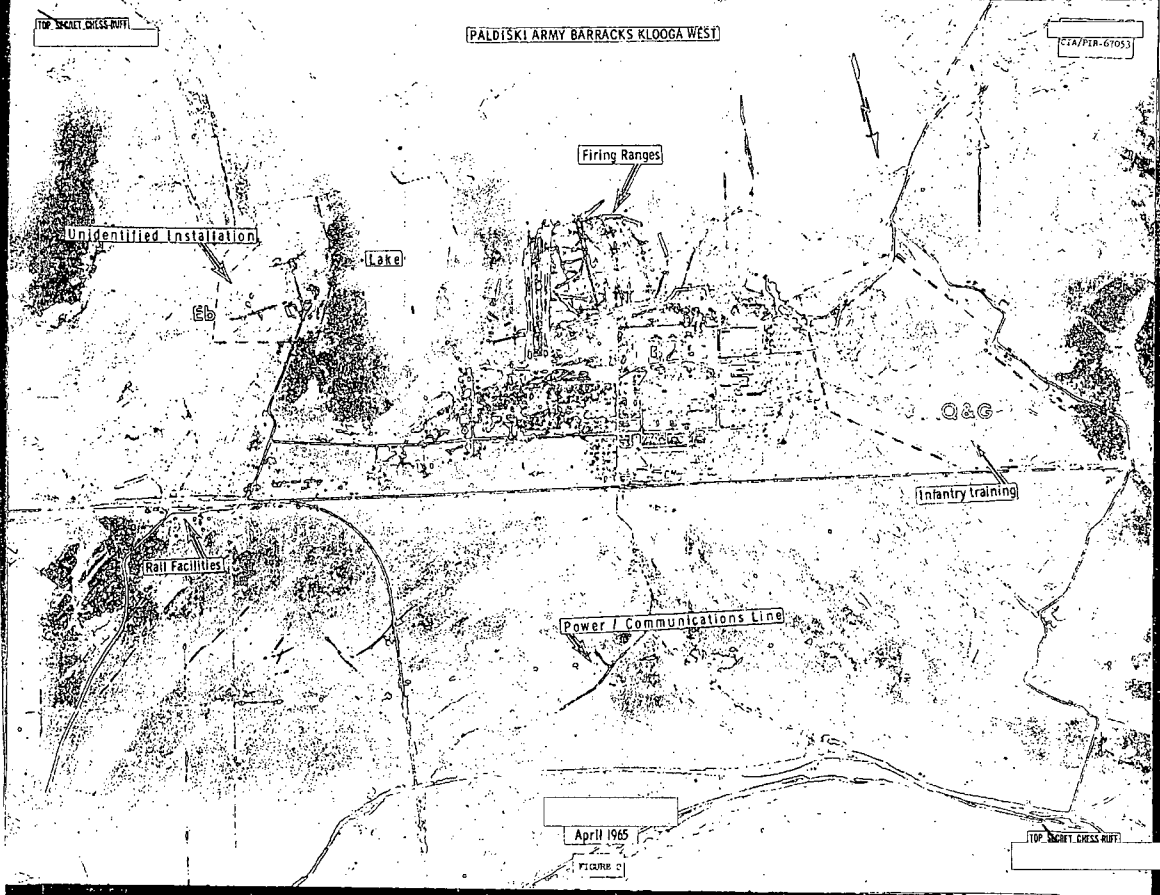
FIGURE 1

TOP SECRET CMESS-RUFF

TOP SECRET CROSS RIFT

PALDIŠKI ARMY BARRACKS KLOOGA WEST

ETA/PER-61053



April 1965

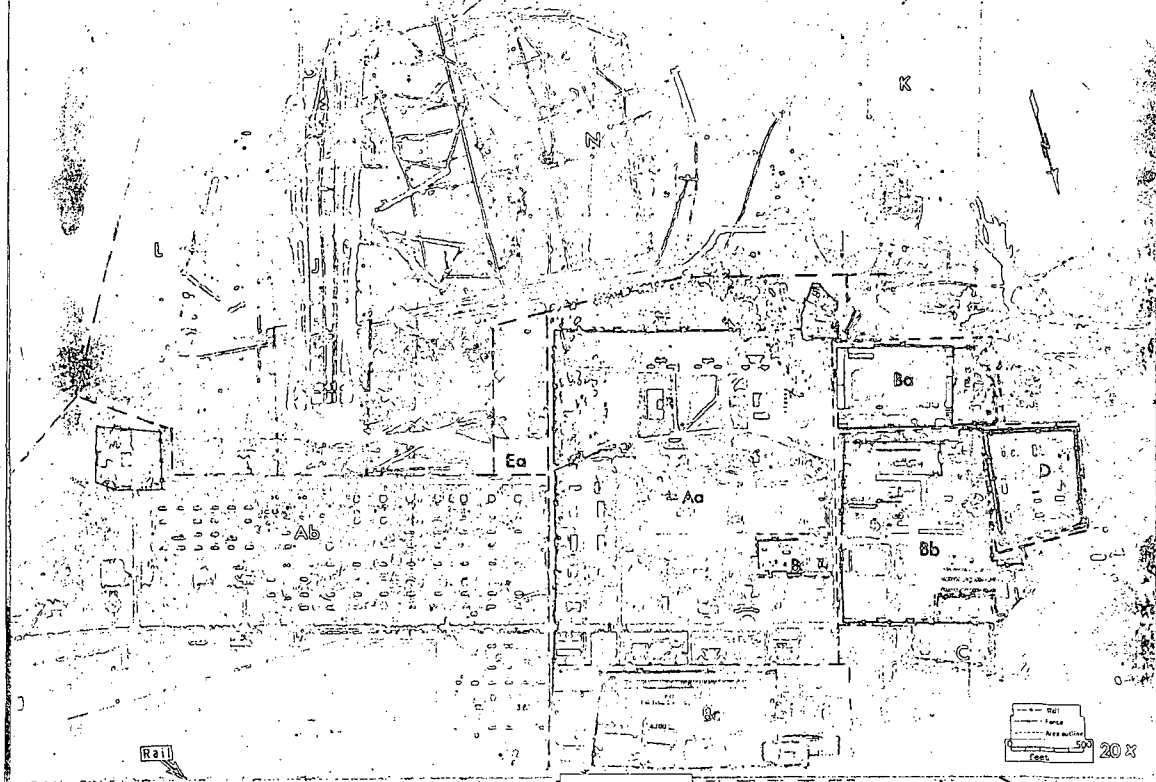
FIGURE 2

TOP SECRET CROSS RIFT

TOP SECRET GRESS RITE

PALDISKI ARMY BARRACKS KLOOGA WEST

CIA/PWR-C7053



April 1965
FIGURE 3

TOP SECRET GRESS RITE

~~TOP SECRET CHESS RUFF~~

CIA/PIR-67053

CIA IMAGERY ANALYSIS DIVISION

REFERENCES

MAPS OR CHARTS

USATC, Series 200, Sheet 0153-2HL, 4th Ed, June 1965 (S)

MEASUREMENTS

All measurements are by IAD analyst and are expressed in feet or kilometers.

REQUIREMENT

CIA. C-RR5-82,756

CIA/IAD PROJECT

30042-6

- 7 -

~~TOP SECRET CHESS RUFF~~

~~TOP SECRET~~

4
3
2

~~TOP SECRET~~