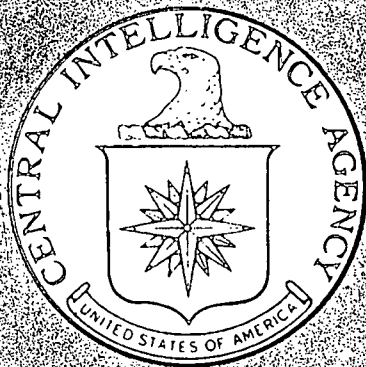


~~TOP SECRET~~



IMAGERY  
ANALYSIS  
DIVISION

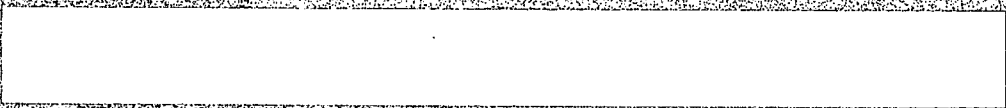
APPROVED FOR RELEASE  
HISTORICAL COLLECTION  
DIVISION - HR70-14  
DATE: 05-10-2012

PIR

PHOTOGRAPHIC INTELLIGENCE REPORT

VITAL RECORDS COPY

GROUND FORCE INSTALLATIONS  
IN THE VICINITY OF TALLINN, USSR  
(BALTIC MILITARY DISTRICT)



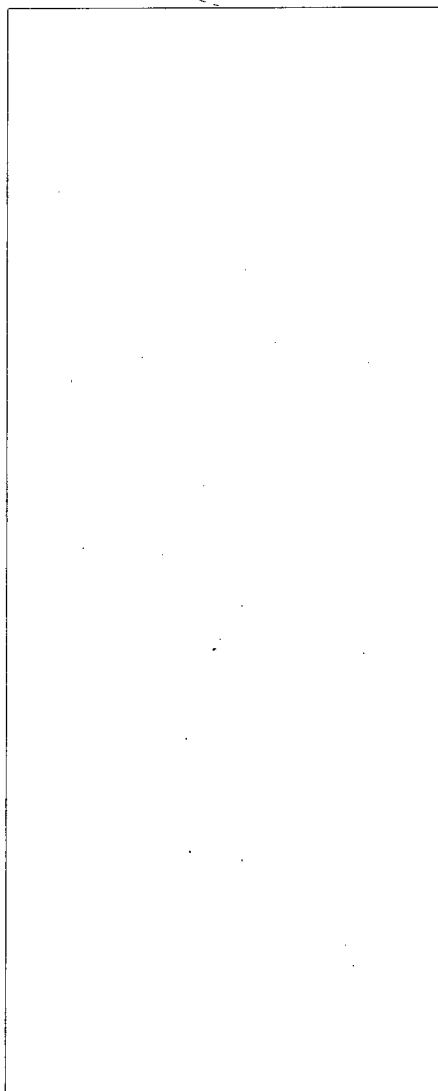
CIA/PIR 67032

R70-

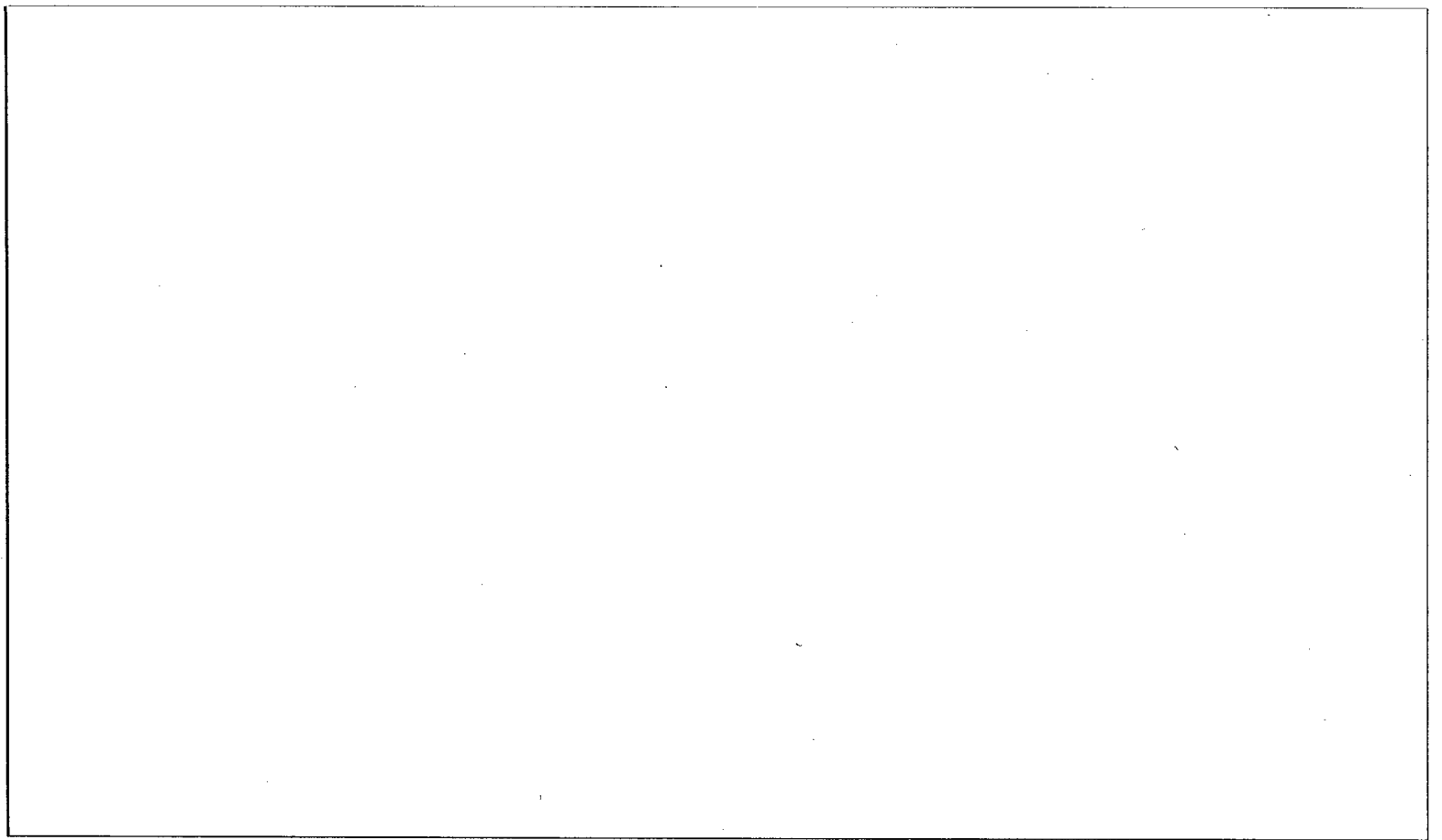
DATE August 1965  
COPY 45  
PAGES 21

~~TOP SECRET~~

HR70-1









~~TOP SECRET RUFF~~



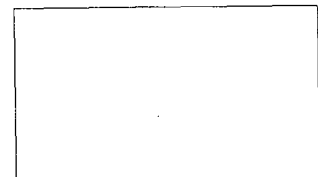
CIA/PIR-67032

CIA IMAGERY ANALYSIS DIVISION

GROUND FORCE INSTALLATIONS IN THE VICINITY OF TALLINN, USSR  
(BALTIC MILITARY DISTRICT)

- 1 -

~~TOP SECRET RUFF~~



~~TOP SECRET RUFF~~

CIA/PIR-67032

CIA IMAGERY ANALYSIS DIVISION

The following alphabetical designators are used to delineate functional areas within military installations.

- A. Billeting area
- B. Vehicle storage/maintenance
- C. General storage area
- D. Ammunition storage
- E. Miscellaneous (hospitals, prisons, POL, personnel training facilities and unidentified facilities)
- F. Small arms range
- G. Driver training area
- H. Support
- J. Tank/assault gun range
- K. Flat trajectory range
- L. Sub caliber range
- M. APC range
- N. Combined arms range
- P. Artillery training area
- Q. Infantry training area
- R. Special or unidentified area

- NOTE:
1. The absence of one or more alphabetical designators indicates that those functional areas were not observed at that particular installation.
  2. Lower case letters (i.e., Ba) are used to delineate more than one area of a particular functional category.
  3. Numbers are used with the alphabetical designators in some instances to identify vehicles or groups of vehicles within a functional area (i.e., Ba 1).

- 2 -

~~TOP SECRET RUFF~~

CIA IMAGERY ANALYSIS DIVISION

TALLINN ARMY BARRACKS TONDI  
(See Figure 1)

(59 23 50N-24 42 00E)

FUNCTIONAL AREAS (See Figure 2)

- A. 1 E-shaped Multistoried Probable Administration Building 250' x 30'
- 3 Multistoried T-shaped Combination Barracks - Messhalls 2@ 700' x 75'  
1@ 260' x 65'
- 6 Single Story Quarters Buildings 85' x 40'
- 1 Single Story Barracks 210' x 45'
- 1 Multistoried Barracks 250' x 65'
- 1 Large L-shaped Support 250' x 80'
- 16 Storage/Support Buildings

Vehicles - 3 Trucks

(numerous small sheds are scattered throughout the area)

- Aa. This area is adjacent to the training area and the chief function probably is in direct support of training.

- 1 Probable Messhall (T-shaped)
- 3 Possible Administrative 2@ 180' x 45'  
110' x 50'
- 1@ 80' x 40'
- 1 Vehicle Storage Shed 170' x 40'
- 20 Storage/Support

Vehicles - 4 Trucks

- Ab. This area is secured by a double fence - activity appears to be limited.

- 4 Probable Barracks 100' x 55'
- 2 Possible Barracks (U-shaped) 470' x 50'
- 1 Possible Administrative 150' x 50'
- 7 Storage/Support

Vehicles - 2 Trucks

B. Vehicle/Equipment Storage/Maintenance Area

1 Probable Administrative		210' x 30'
9 Vehicle/Equipment Sheds	1@	950' x 40'
	1@	420' x 40'
	1@	340' x 40'
	1@	340' x 25'
	2@	260' x 40'
	1@	260' x 65'
	1@	170' x 40'
	1@	210' x 65'
2 Vehicle/Equipment Sheds Under construction		190' x 40'
3 Vehicle Maintenance	1@	130' x 55'
	2@	85' x 55'

20 Storage/Support (varying sizes & shapes)

Vehicles - 9 possible tanks and at least 17 trucks

Ba. 1 Administrative/Support		130' x 40'
9 Vehicle/Equipment Sheds	1@	380' x 75'
	1@	270' x 55'
	1@	180' x 35'
	1@	130' x 40'
	2@	250' x 40'
	2@	250' x 55'
	1@	200' x 40'
1 Vehicle Maintenance		70' x 60'
3 Small Support		

Vehicles - 5 possible tanks and 12 trucks

Bb. Possibly related vehicle storage/maintenance area

1 Vehicle/Equipment Shed (rail served)		250' x 65'
2 Vehicle/Equipment Shed (rail served)		150' x 80'
1 Vehicle Maintenance Shed		150' x 80'
3 Small Support		

Vehicles - at least 20 trucks

Bc. Probable vehicle/equipment storage area.

4 Probable Vehicle/Equipment Storage Sheds		130' x 65'
5 Small Storage Support		

Vehicles - none observed



C. Related storage areas - this area is rail served and secured

- 8 Storage Buildings
  - 4@ 240' x 65'
  - 1@ 320' x 65'
  - 3@ 130' x 40'
- 2 Probable Vehicle Storage/Maintenance Sheds
  - 1@ 200' x 30'
  - 1@ 130' x 40'
- 8 Small Support Buildings

Vehicles - at least 25 trucks

Ca. Possible storage area secured by an single fence - this area shows little activity.

- 13 Possible Storage
  - 11@ 45' x 20'
  - 1@ 45' x 30'
  - 1@ 80' x 20'

Vehicles - none observed

E. Personnel training and recreation facilities: swimming pool, obstacle course, etc.

R. Unidentified facility.

TRAINING AREAS (See Figures 1, 3 & 4)

A large training area is located approximately 6-7 kilometers south of the Tallinn Army Barracks Tondi. Facilities at this area include a large flat-trajectory firing range, a combination tracked and wheeled vehicle driver training course, numerous infantry training facilities, and at least two sub-caliber firing ranges. Extensive mining activity in this area indicates that the area now occupied with military training facilities may be abandoned in favor of the mining activity. New mining activity has continued to encroach upon the military training area since July of 1962.

Activity on the firing ranges and the driver training circuits is difficult to assess due to the light tone of the soil within the area and its apparent resistance to weathering.

[REDACTED]

~~TOP SECRET RUFF~~

[REDACTED]

CIA/PIR-67032

CIA IMAGERY ANALYSIS DIVISION

PI COMMENTS

Extensive new construction is taking place around this military installation. New apartment type housing, industrial activity, and highway construction is evident in areas adjacent to the present installation. Parts of the training areas have been utilized for these new nonmilitary activities. Activity appears to be at a low level throughout the installation.

ADDITIONAL INFORMATION

The Tallinn Military Barracks [REDACTED] and the Tallinn Army Barracks Kopli [REDACTED] do not appear to be related to ground force activity. Good quality [REDACTED] photography of May 1965 indicates that these installations are probably connected with naval activity at the Tallinn port facilities.

- 6 -

~~TOP SECRET RUFF~~

[REDACTED]

~~TOP SECRET RUFF~~

CIA/PIR-67032

CIA IMAGERY ANALYSIS DIVISION

REFERENCES

MAPS OR CHARTS

US Air Target Chart, Series 200, Sheet 0153-2HL, Fourth Edition,  
June 1964 (SECRET)

REQUIREMENT

CIA. C-RR5-82,756

CIA/IAD PROJECT

30042-6

- 7 -

~~TOP SECRET RUFF~~

TALLINN, USSR  
(5923N, 2442E)

~~TOP SECRET RUFF~~

CIA/PIR-67032



ARMY BARRACKS TONNI

FIRING RANGE

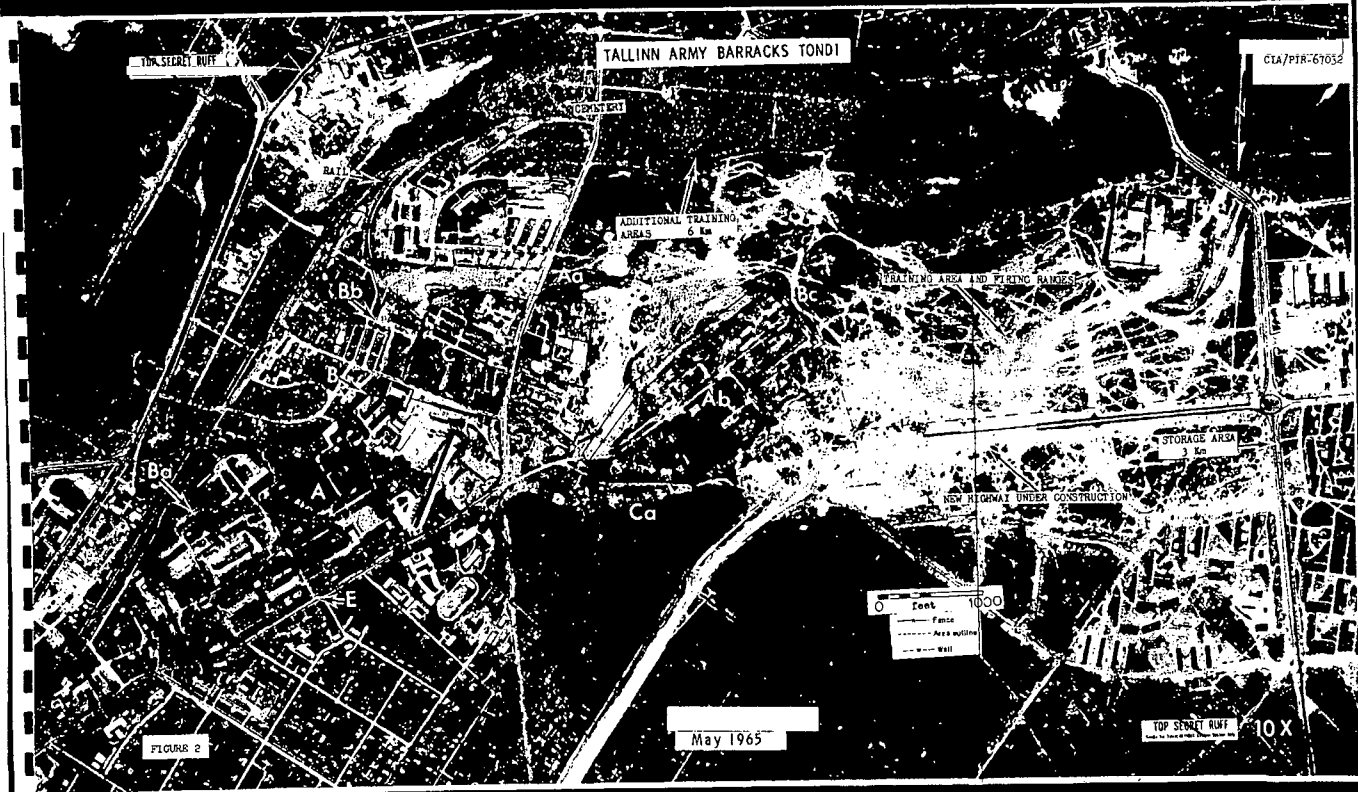
VEHICLE DRIVER TRAINING

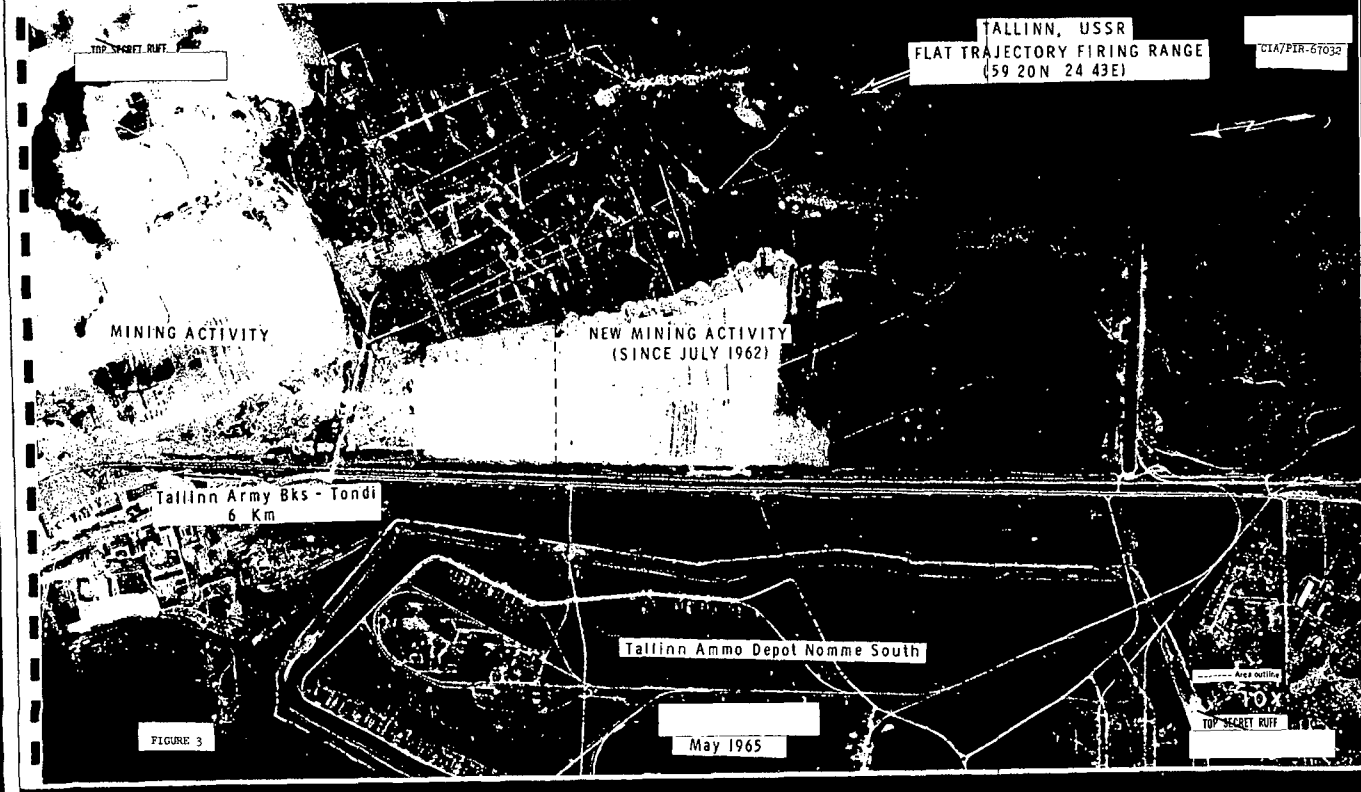
MAY 1965

FIGURE 1

~~TOP SECRET RUFF~~







TOP SECRET RUFF

TALLINN, USSR  
TRACKED-WHEELED VEHICLE DRIVER TRAINING  
AND INFANTRY TRAINING COURSE  
(59 20N 24 42E)

CIA/PIN-67032

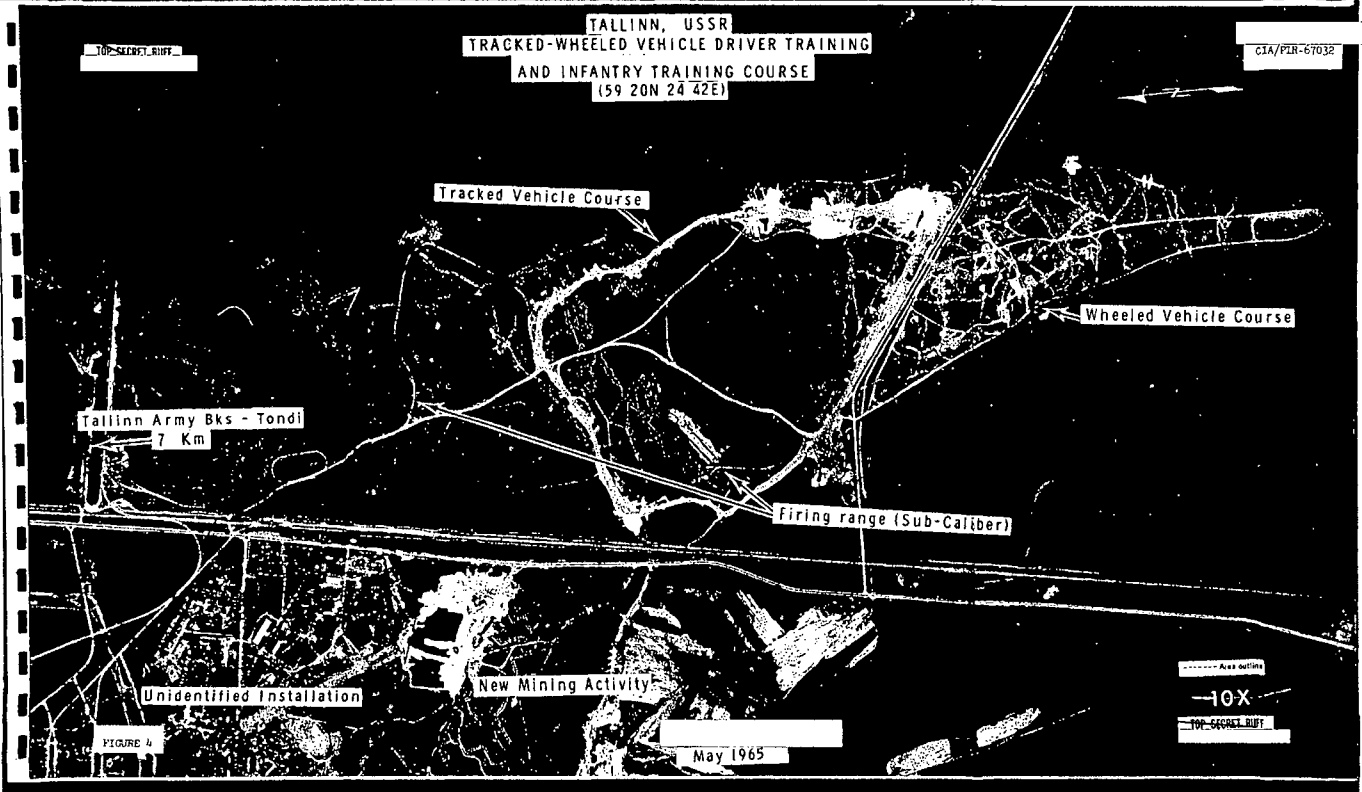


FIGURE 4

May 1965

Area outline  
10X  
TOP SECRET RUFF

~~TOP SECRET~~

~~TOP SECRET~~