

~~TOP SECRET~~

HR70-14

PHOTOGRAPHIC INTERPRETATION REPORT

PIR



APPROVED FOR
RELEASE -
HISTORICAL
COLLECTION
DIVISION DATE:
06-18-2012

~~TOP SECRET~~

SOVIET MILITARY ORDER OF BATTLE

MOSCOW MD

TCS-80847/65

JULY 1965

COPY *02*

6 PAGES

handle via **TALENT-KEYHOLE** control only

GROUP 1 EXCLUDED FROM AUTOMATIC DOWNGRADING AND DECLASSIFICATION

~~TOP SECRET~~

WARNING

This document contains information affecting the national security of the United States within the meaning of the espionage laws U. S. Code Title 18, Sections 793 and 794. The law prohibits its transmission or the revelation of its contents in any manner to an unauthorized person, as well as its use in any manner prejudicial to the safety or interest of the United States or for the benefit of any foreign government to the detriment of the United States. It is to be seen only by personnel especially indoctrinated and authorized to receive information in the designated control channels. Its security must be maintained in accordance with regulations pertaining to TALENT-KEYHOLE Control System.

PREFACE

This report is one in a series on Soviet Ground Force and Logistic installations being prepared for a DIA/CIA Panel. The series is being coordinated, published and disseminated by NPIC. The photographic analysis is being performed by the NPIC Photographic Analysis Group, the CIA Photographic Intelligence Division (NPIC), and the Production Center 1P1a (DIA). The photographic analysis for this particular report was performed by the NPIC Photographic Analysis Group.

In the interest of uniformity, the titles and letter designators for the facilities observed at these installations are identical with those appearing in the project requirement. When a specific facility is not observed both its title and letter designator are omitted in the report.

Titles and letter designators for the various facilities are as follows: (A) railroad service, (B) road service, (C) landing strips, (D) administrative and troop housing areas, (E) storage areas, (F) ammunition storage areas, (G) POL storage areas, (H) other buildings and facilities, (J) equipment storage/maintenance areas, (K) athletic fields, (L) small-arms firing ranges, (M) driver training areas, (N) tank/assault gun firing ranges, (P) flat trajectory firing ranges, (Q) artillery emplacements (batteries), (R) infantry or combined arms field training area or courses, (S) special training facilities, (T) unidentified facilities or tracking activity.

TULA TRAINING AREA KOSTROVO

(54-25N 037-28E)

TULA, TULSKAYA OBLAST, USSR

MOSCOW MD

TA No: COMOR No: See Text

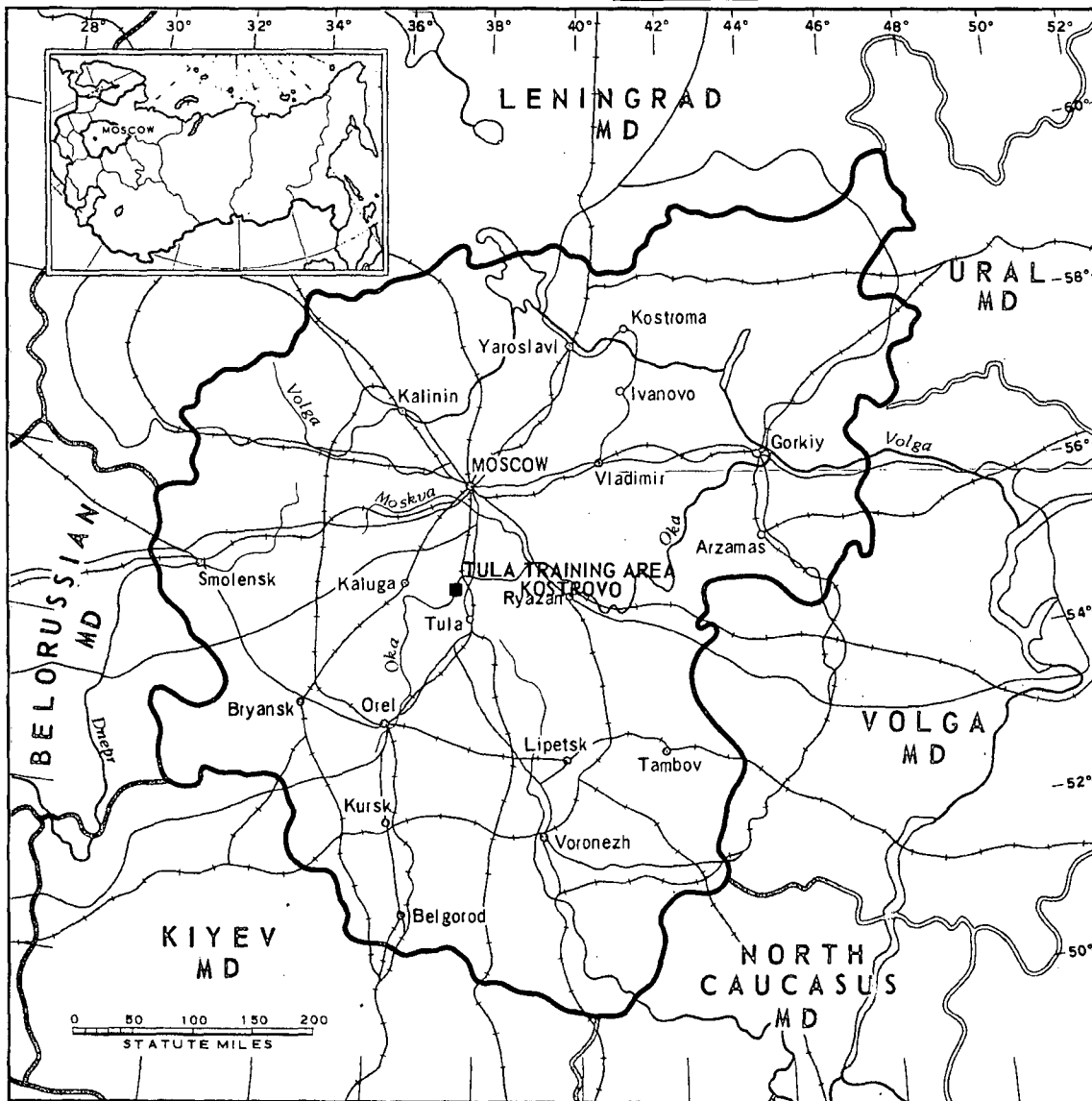


FIGURE 1. LOCATION OF TULA TRAINING AREA KOSTROVO.

NPIC K-2282 (7/65)

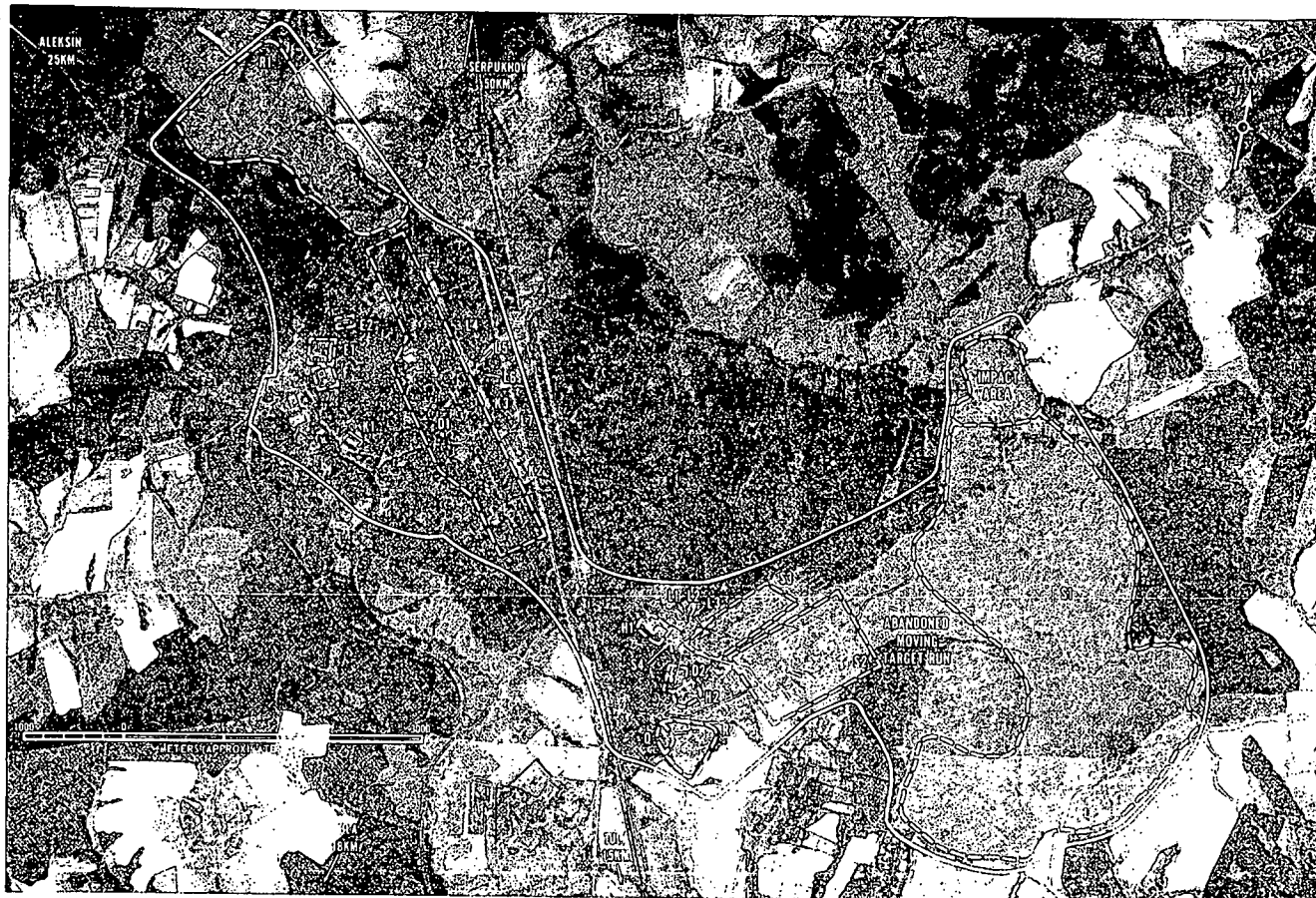


FIGURE 2. TULA TRAINING AREA KOSTROVO, TULA, USSR, SEPTEMBER 1964.

MPIC 8-2283 12/64

~~TOP SECRET RUFF~~

Handle Via
TALENT-KEYHOLE
Control System Only

TCS-80847/65

SUMMARY

Tula Training Area Kostrovo is located 23 kilometers (km) north-northwest of Tula on both sides of the Tula-Serpukhov highway (Figure 1).

The Tula Army Barracks Kostrovo [redacted] has two category codes reported in the BE/TDI listings. One category is for a barracks area; however, no barracks are identified. The other category is for an associated training area.

The area covers approximately 4,400 acres and contains a large bivouac area with an administration building, 34 quarters, and 163 support buildings; 2 secured storage areas with 7 storage and 2 support buildings; and a secured ammunition storage area with 3 revetted buildings and 2 support buildings. The training facilities include 3 athletic fields, 7 small-arms firing ranges with 3 support buildings, an artillery battery, an infantry field-training area,

and a probable infantry field-training area with 7 support buildings, a possible mortar training area, 2 subcaliber weapons moving-target firing ranges with 7 range-support buildings, and a possible jump tower with an associated support building. Three other range support buildings, 2 barracks/administration buildings, 2 support buildings, and a secured area with 3 support buildings, and a large U-shaped revetment are all located in the training area (Figure 2).

The area was covered by 9 KEYHOLE missions between November 1962 and March 1965. Very light winter activity was observed with only moderate activity discernible on summer coverage. Three small-arms firing ranges and the possible mortar range were first observed on June 1964 photography. The artillery battery was added between July and September 1964.

DESCRIPTION OF INSTALLATION

Railroad Service

The single track Tula-Aleksin rail line passes through the training area.

Road Service

The area is served by the all-weather Tula-Serpukhov highway.

Administration and Troop Housing Areas

Area D1 is a bivouac area which contains an administration building, 34 quarters, and 163 support buildings.

Area D2 contains 2 barracks/administration buildings and 2 support buildings.

General Storage Areas

Area E1 is secured and contains five storage buildings.

Area E2 is secured and contains 2 storage buildings and 2 support buildings.

Ammunition Storage Area

Area F is double secured and contains 3 revetted ammunition storage buildings and 2 support buildings.

Other Buildings

Area H1 contains 3 range support buildings.

Area H2, a possible small-arms range, contains 3 support buildings in a secured area with 1 large revetment.

Athletic Fields

Areas K1, K2, and K3 are athletic fields.

- 4 -

Handle Via
TALENT-KEYHOLE
Control System Only

~~TOP SECRET RUFF~~

Small-Arms Firing Ranges

Areas L1 through L7 are small-arms firing ranges. L1 measures 160 by 80 feet and has a range support building. L2 measures 320 by 100 feet and has a range support building. L3 measures 160 by 80 feet and has a range support building. L4 measures 240 by 40 feet and appears abandoned. L5 measures 160 by 60 feet and appears abandoned. L6 measures 240 by 40 feet and appears abandoned. L7 measures 320 by 80 feet.

Artillery Emplacement

Area Q is a field artillery battery with 4 firing positions. This area first appeared on the September 1964 coverage. It is part of the probable infantry field-training area.

Infantry Field-Training Area

Area R1 is an infantry field-training area containing an extensive network of personnel trenches.

Area R2 is a probable infantry field-training

area consisting of 7 support buildings and personnel trenching.

Special Training Facilities

Area S1 is a possible mortar training area. This facility consists of a number of probable pads connected by a network of trails. The majority of these pads were added between June and September 1964. Those in the impact area were added after the most active time of the impact area, June 1964.

Area S2 is a subcaliber weapons firing range with 6 moving-target runs having a maximum distance of 2,800 feet. This area has 6 support buildings.

Area S3 is a subcaliber weapons firing range with 3 moving-target runs having a maximum firing distance of 2,950 feet, and a support building. This area appears active on winter and summer coverage.

Area S4 is a possible jump tower with a support building.