

PHOTOGRAPHIC INTERPRETATION REPORT

APPROVED FOR RELEASE -
HISTORICAL COLLECTION
DIVISION HR70-14 DATE:
07-18-2012

SOVIET MILITARY ORDER OF BATTLE MOSCOW MD



CIA



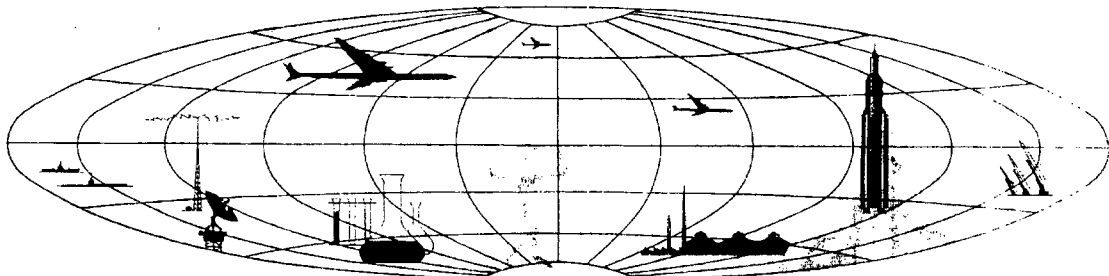
DIA

Handle Via **TALENT - KEYHOLE** Control Only

WARNING

This document contains classified information affecting the national security of the United States within the meaning of the espionage laws U. S. Code Title 18, Sections 793 and 794. The law prohibits its transmission or the revelation of its contents in any manner to an unauthorized person, as well as its use in any manner prejudicial to the safety or interest of the United States or for the benefit of any foreign government to the detriment of the United States. It is to be seen only by personnel especially indoctrinated and authorized to receive TALENT-KEYHOLE information. Its security must be maintained in accordance with KEYHOLE and TALENT regulations.

NATIONAL PHOTOGRAPHIC INTERPRETATION CENTER



~~TOP SECRET~~

GROUP 1
Excluded from automatic
downgrading and declassification

PREFACE

This report is one in a series on Soviet Ground Force and Logistic installations being prepared for a DIA/CIA Panel. The series is being coordinated, published and disseminated by NPIC. The photographic analysis is being performed by the NPIC Photographic Analysis Group, the CIA Photographic Intelligence Division (NPIC), and the Production Center 1P1a (DIA). The photographic analysis for this particular report was performed by the NPIC Photographic Analysis Group.

In the interest of uniformity, the titles and letter designators for the facilities observed at these installations are identical with those appearing in the project requirement. When a specific facility is not observed both its title and letter designator are omitted in the report.

Titles and letter designators for the various facilities are as follows: (A) railroad service, (B) road service, (C) landing strips, (D) administrative and troop housing areas, (E) storage areas, (F) ammunition storage areas, (G) POL storage areas, (H) other buildings and facilities, (J) equipment storage/maintenance areas, (K) athletic fields, (L) small arms firing ranges, (M) driver training areas, (N) tank/assault gun firing ranges, (P) flat trajectory firing ranges, (Q) artillery emplacements (batteries), (R) infantry or combined arms field training area or courses, (S) special training facilities, (T) unidentified facilities or tracking activity.

RZHEV AMMUNITION DEPOT MONCHALOVO

(56-15N 034-08E)

RZHEV, KALININSKAYA OBLAST, USSR

MOSCOW MD

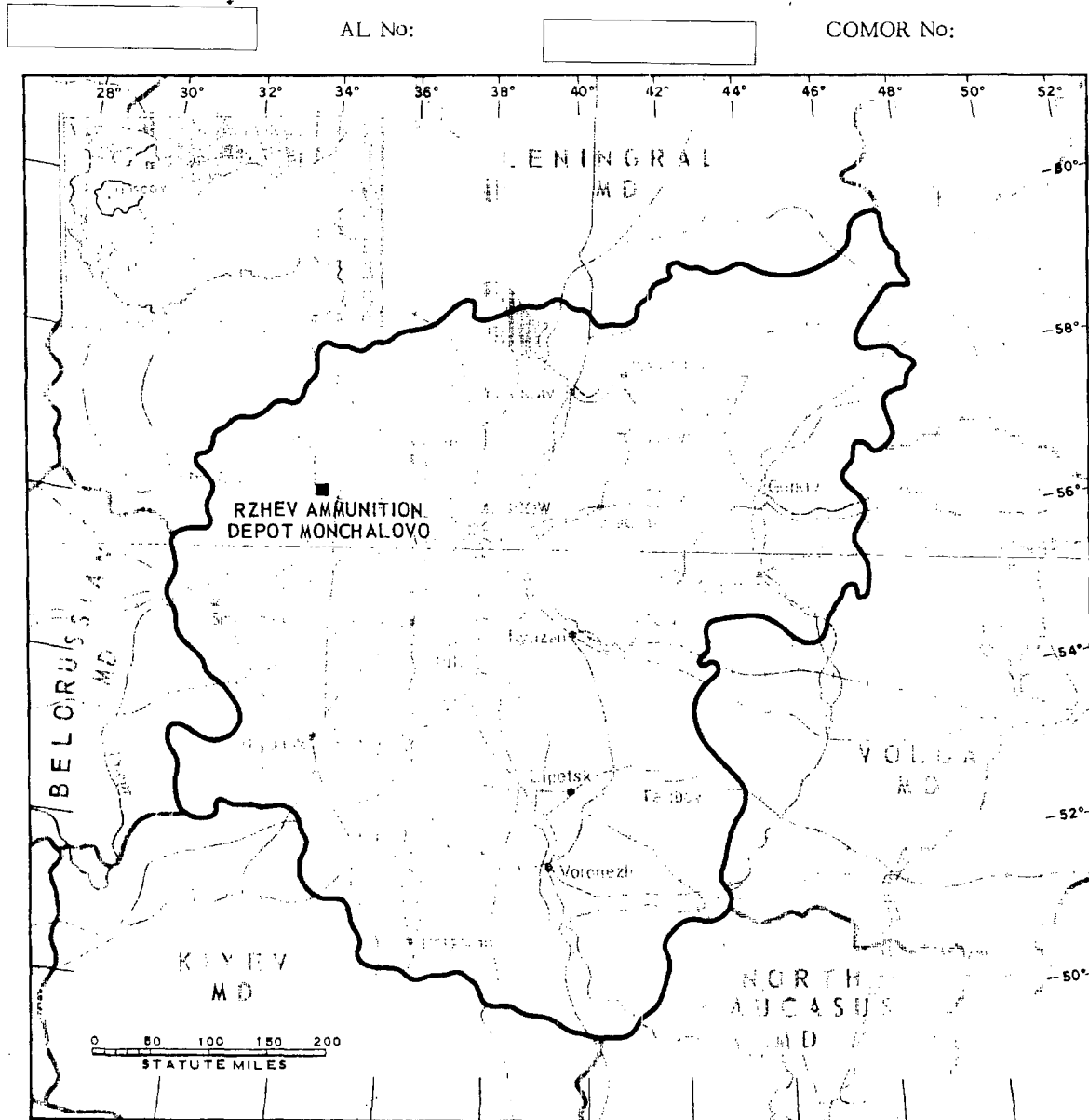


FIGURE 1. LOCATION OF RZHEV AMMUNITION DEPOT MONCHALOVO.

NPIC X-1679 (6/65)

SUMMARY

Rzhev Ammunition Depot Monchalovo is located 13 kilometers (km) west of Rzhev (Figure 1).

This installation covers approximately 1,130 acres and contains an administration building, 7 barracks/quarters, 11 quarters, 6 storage buildings, 20 support buildings, and 33

ammunition storage buildings (Figures 2 and 3).

The installation is covered on 7 KEYHOLE missions between July 1961 and October 1964. Comparative analysis reveals no significant change in facilities and a high level of activity throughout this period.

DESCRIPTION OF INSTALLATION

Rail Service

The installation formerly was rail served. The spur now appears to be abandoned or in disrepair.

Road Service

An all-weather road provides access to Rzhev.

Administration and Troop Housing Area

Area D contains an administration building, 7 barracks/quarters, 11 quarters, 6 storage buildings, and 15 support buildings.

Ammunition Storage Area

Area F contains 33 ammunition storage buildings and 5 support buildings.

POL Storage Area

Rzhev Petroleum Products Storage at 56-14N 034-21E [redacted] contains 5 small POL storage tanks.

Athletic Field

Area K is an athletic field.

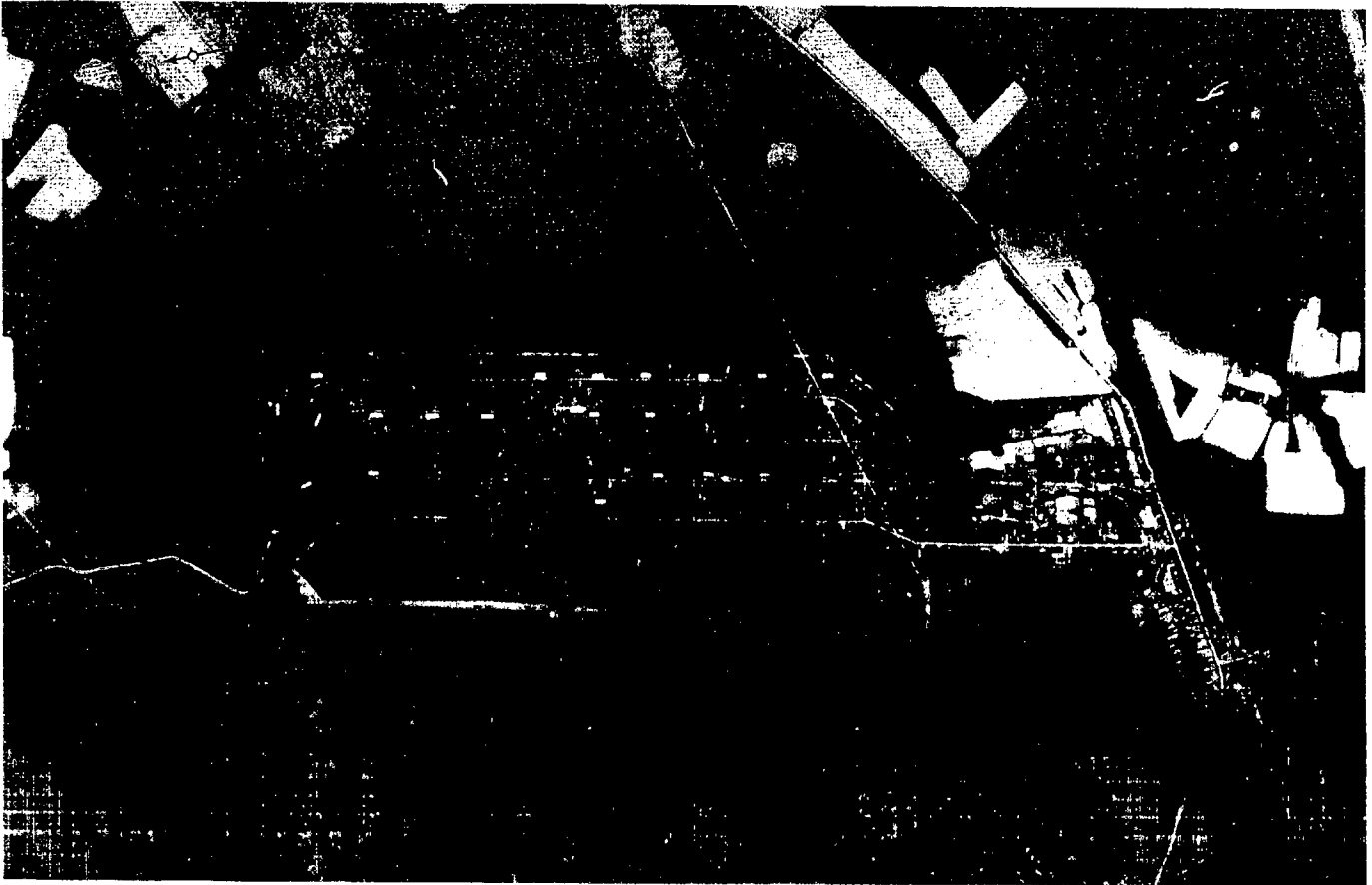


FIGURE 2. RZHEV AMMUNITION DEPOT MONCHALOVO, RZHEV, USSR, OCTOBER 1964.

REF ID: A67881

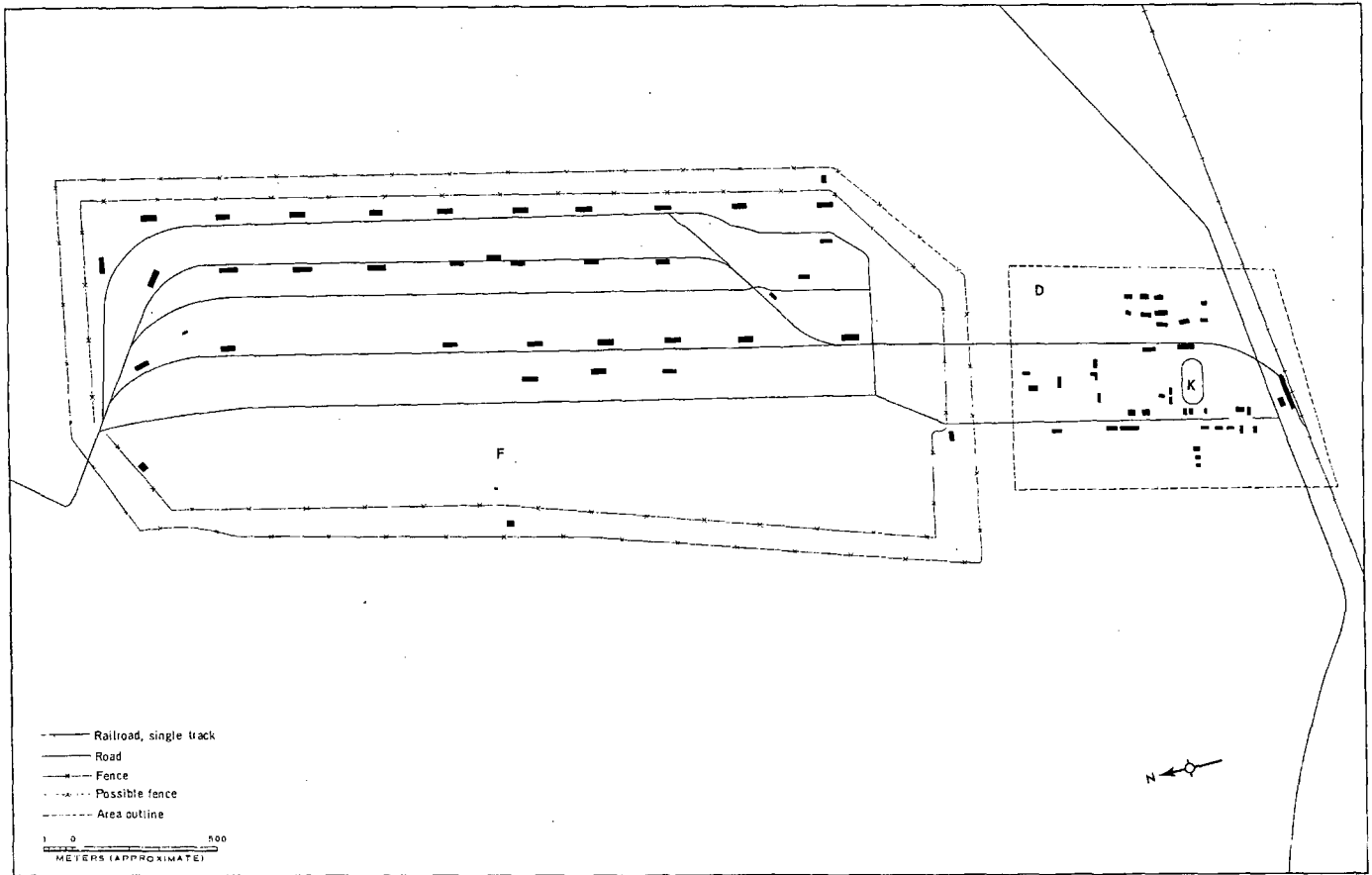
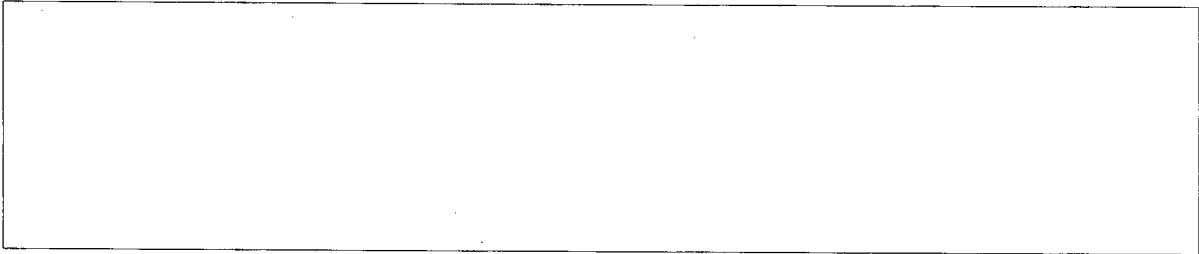


FIGURE 3. RZHEV AMMUNITION DEPOT MONCHALOVO. Sketch compiled from [redacted] October 1964.

NPIC 9-1681 (8-65)

REFERENCES

PHOTOGRAPHY



MAPS OR CHARTS

US Air Target Chart, Series 200, Sheet 0154-21HL, 2d ed, Mar 64 (SECRET)



DOCUMENT



REQUIREMENT

C-RR4-81,733 (partial answer)

NPIC PROJECT

11709/84

~~TOP SECRET~~

~~TOP SECRET~~