



PHOTOGRAPHIC INTERPRETATION REPORT

# SOVIET MILITARY ORDER OF BATTLE MOSCOW MD

APPROVED FOR RELEASE -  
HISTORICAL COLLECTION  
DIVISION HR70-14 DATE:  
07-18-2012



CIA



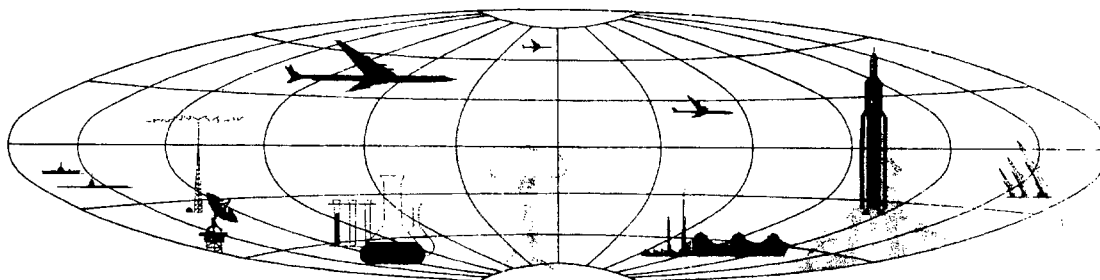
DIA

Handle Via **TALENT - KEYHOLE** Control Only

### WARNING

This document contains classified information affecting the national security of the United States within the meaning of the espionage laws U. S. Code Title 18, Sections 793 and 794. The law prohibits its transmission or the revelation of its contents in any manner to an unauthorized person, as well as its use in any manner prejudicial to the safety or interest of the United States or for the benefit of any foreign government to the detriment of the United States. It is to be seen only by personnel especially indoctrinated and authorized to receive TALENT-KEYHOLE information. Its security must be maintained in accordance with KEYHOLE and TALENT regulations.

NATIONAL PHOTOGRAPHIC INTERPRETATION CENTER



**PREFACE**

This report is one in a series on Soviet Ground Force and Logistic installations being prepared for a DIA/CIA Panel. The series is being coordinated, published and disseminated by NPIC. The photographic analysis is being performed by the NPIC Photographic Analysis Group, the CIA Photographic Intelligence Division (NPIC), and the Production Center 1P1a (DIA). The photographic analysis for this particular report was performed by the NPIC Photographic Analysis Group.

In the interest of uniformity, the titles and letter designators for the facilities observed at these installations are identical with those appearing in the project requirement. When a specific facility is not observed both its title and letter designator are omitted in the report.

Titles and letter designators for the various facilities are as follows: (A) railroad service, (B) road service, (C) landing strips, (D) administrative and troop housing areas, (E) storage areas, (F) ammunition storage areas, (G) POL storage areas, (H) other buildings and facilities, (J) equipment storage/maintenance areas, (K) athletic fields, (L) small arms firing ranges, (M) driver training areas, (N) tank/assault gun firing ranges, (P) flat trajectory firing ranges, (Q) artillery emplacements (batteries), (R) infantry or combined arms field training area or courses, (S) special training facilities, (T) unidentified facilities or tracking activity.

TOROPETS AMMUNITION DEPOT NORTHEAST  
(56-31N 031-42E)  
TOROPETS, KALININSKAYA OBLAST, USSR  
MOSCOW MD

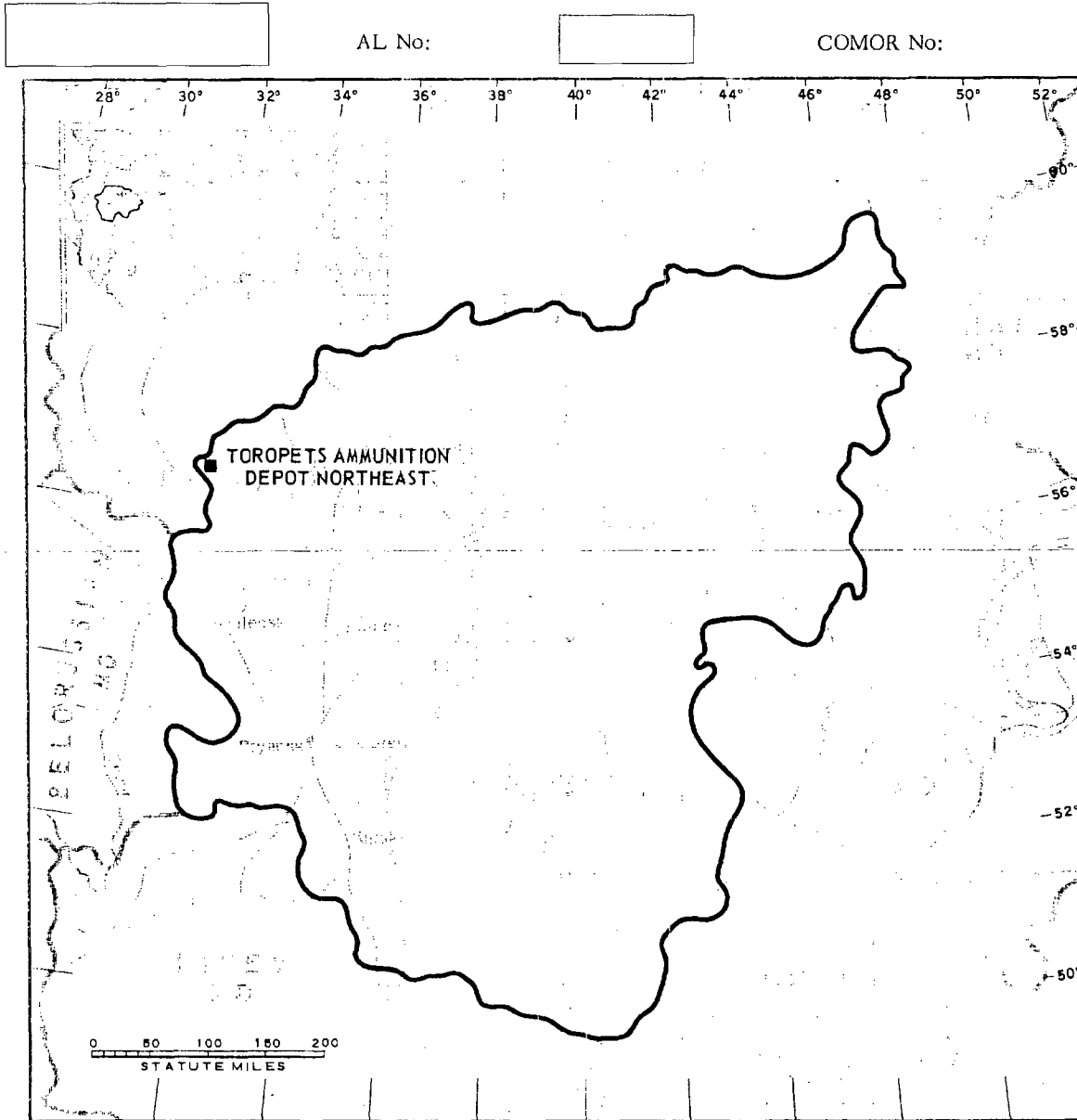


FIGURE 1. LOCATION OF TOROPETS AMMUNITION DEPOT NORTHEAST.

SUMMARY

Toropets Ammunition Depot Northeast is located on the northeastern edge of Toropets (Figure 1).

The installation covers approximately 850 acres and contains 2 administration buildings, 3 barracks, 54 ammunition storage buildings, 12 storage buildings, a probable packing/shipping building, 29 support buildings, a motor

park, a vehicle shed, and a vehicle maintenance building (Figures 2 and 3).

The depot is covered on 7 KEYHOLE missions between April 1962 and October 1964. Comparative analysis reveals no significant change in facilities. The installation appears to be active and occupied on all coverage.

DESCRIPTION OF INSTALLATION

Railroad Service

Four rail spurs from the Toropets-Andrapol single-track railroad.

Ammunition Storage Area

Area F contains 54 ammunition storage buildings and 5 support buildings. Twenty-nine of the ammunition storage buildings are directly served by the rail spurs.

Road Service

Probable all-weather secondary roads provide access to Toropets.

Other Buildings

Area H contains a packing/shipping building and 2 support buildings. The packing/shipping building is rail served.

Administration and Troop Housing Area

Area D contains 2 administration buildings, 3 barracks, and 12 support buildings.

Equipment Storage/Maintenance Area

Area J contains a motor park (325 by 250 feet), an L-shaped vehicle maintenance building (150 by 45 feet with a 140- by 65-foot leg), a vehicle shed (130 by 35 feet), and a support building.

General Storage Area

Area E contains 12 storage buildings and 9 support buildings. Three of the storage buildings are rail served.

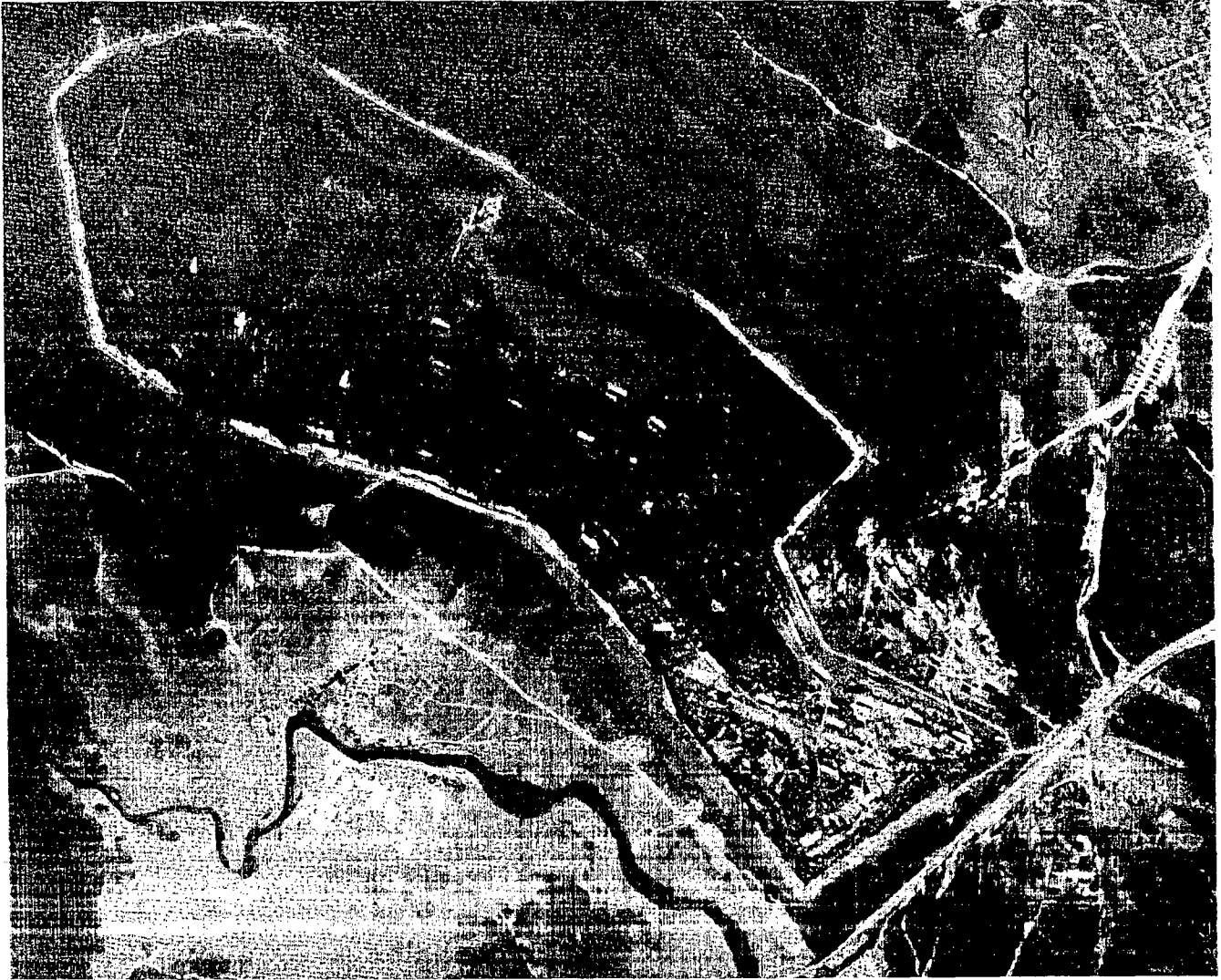
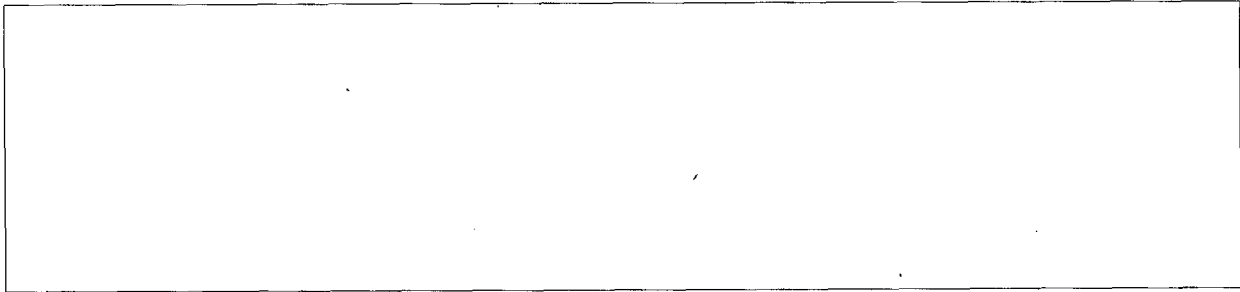


FIGURE 2. TOROPETS AMMUNITION DEPOT NORTHEAST, TOROPETS, USSR, OCTOBER 1964.

N.P.C. K-1030 10/6/64

REFERENCES

PHOTOGRAPHY



MAPS OR CHARTS

US Air Target Chart, Series 200, Sheet 0153-25HL, 3d ed, Feb 63 (SECRET)

DOCUMENT



REQUIREMENT

C-RR4-81,733 (partial answer)

NPIC PROJECT

11709/64

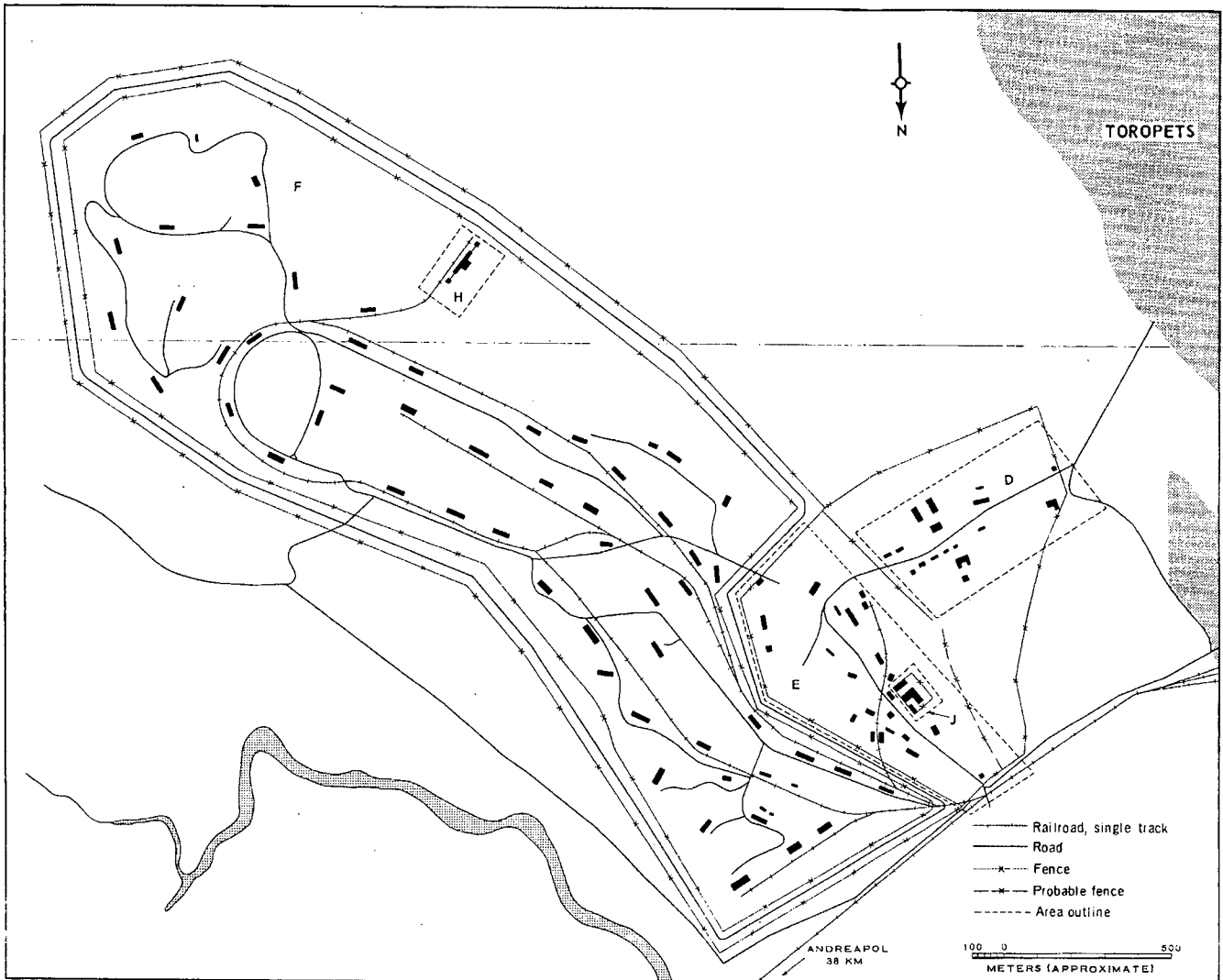


FIGURE 3. TOROPETS AMMUNITION DEPOT NORTHEAST. Sketch compiled from [redacted] October 1964.

NPIC K-1537 (6/65)

~~TOP SECRET~~

---

~~TOP SECRET~~