

HR70-14

~~TOP SECRET~~

TCS-80611 '65

Copy
6 Pages

June 1965



PHOTOGRAPHIC INTERPRETATION REPORT

SOVIET MILITARY ORDER OF BATTLE MOSCOW MD

APPROVED FOR RELEASE -
HISTORICAL COLLECTION
DIVISION HR70-14 DATE:
07-18-2012



CIA



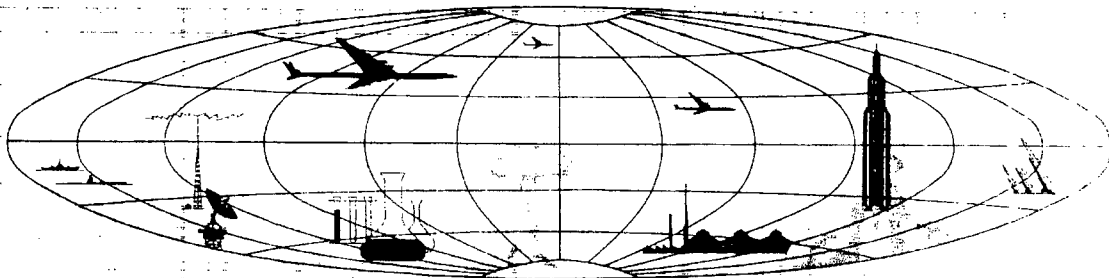
DIA

Handle Via **TALENT - KEYHOLE** Control Only

WARNING

This document contains classified information affecting the national security of the United States within the meaning of the espionage laws U. S. Code Title 18, Sections 793 and 794. The law prohibits its transmission or the revelation of its contents in any manner to an unauthorized person, as well as its use in any manner prejudicial to the safety or interest of the United States or for the benefit of any foreign government to the detriment of the United States. It is to be seen only by personnel especially indoctrinated and authorized to receive TALENT-KEYHOLE information. Its security must be maintained in accordance with KEYHOLE and TALENT regulations.

NATIONAL PHOTOGRAPHIC INTERPRETATION CENTER



~~TOP SECRET~~

GROUP 1
Excluded from automatic
downgrading and declassification

PREFACE

This report is one in a series on Soviet Ground Force and Logistic installations being prepared for a DIA/CIA Panel. The series is being coordinated, published and disseminated by NPIC. The photographic analysis is being performed by the NPIC Photographic Analysis Group, the CIA Photographic Intelligence Division (NPIC), and the Production Center 1P1a (DIA). The photographic analysis for this particular report was performed by the NPIC Photographic Analysis Group.

In the interest of uniformity, the titles and letter designators for the facilities observed at these installations are identical with those appearing in the project requirement. When a specific facility is not observed both its title and letter designator are omitted in the report.

Titles and letter designators for the various facilities are as follows: (A) railroad service, (B) road service, (C) landing strips, (D) administrative and troop housing areas, (E) storage areas, (F) ammunition storage areas, (G) POL storage areas, (H) other buildings and facilities, (J) equipment storage/maintenance areas, (K) athletic fields, (L) small arms firing ranges, (M) driver training areas, (N) tank/assault gun firing ranges, (P) flat trajectory firing ranges, (Q) artillery emplacements (batteries), (R) infantry or combined arms field training area or courses, (S) special training facilities, (T) unidentified facilities or tracking activity.

TOROPETS AMMUNITION DEPOT SOUTH
(56-21N 031-39E)
TOROPETS, KALININSKAYA OBLAST, USSR
MOSCOW MD

AL No:

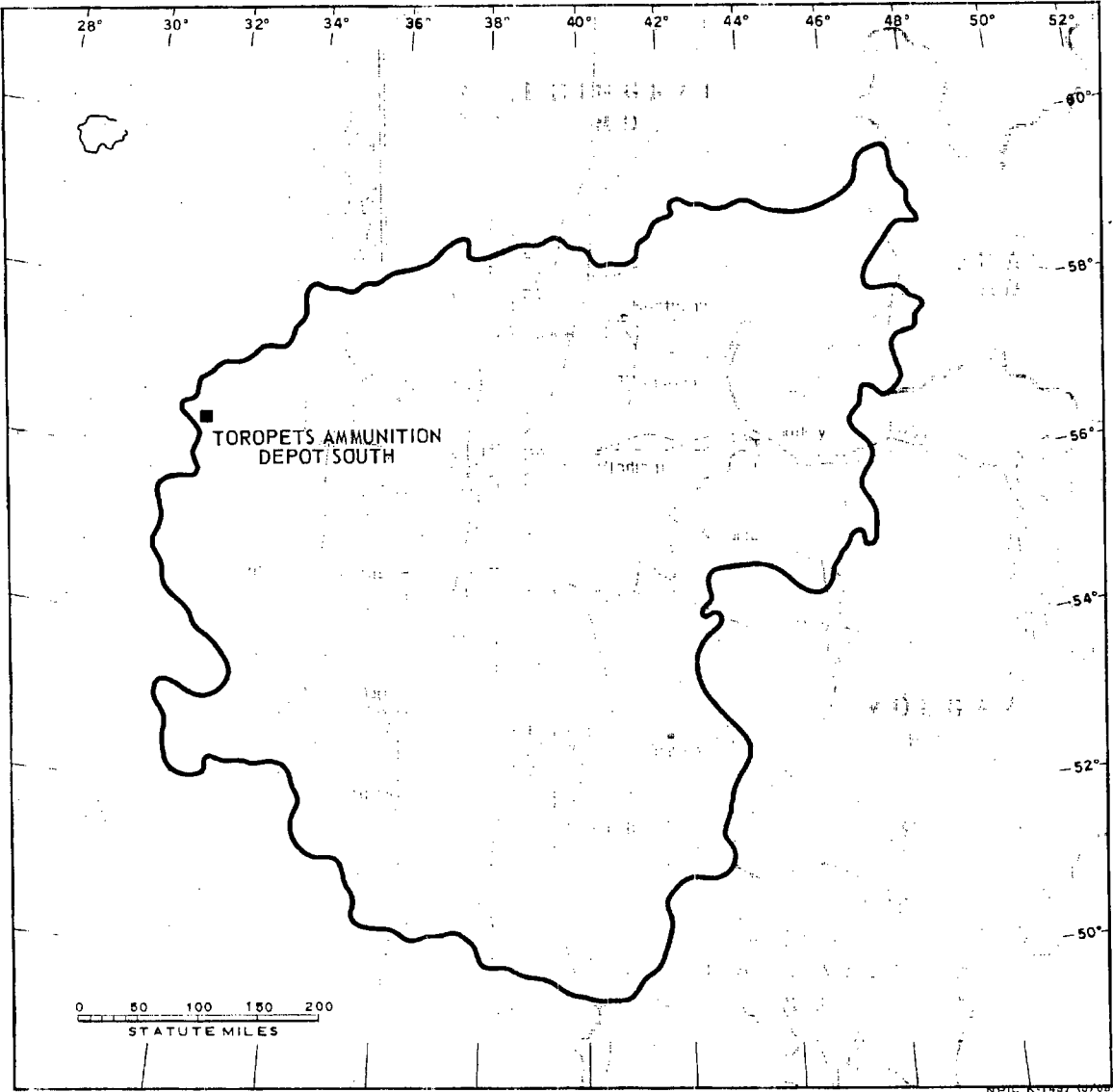


FIGURE 1. LOCATION OF TOROPETS AMMUNITION DEPOT SOUTH.

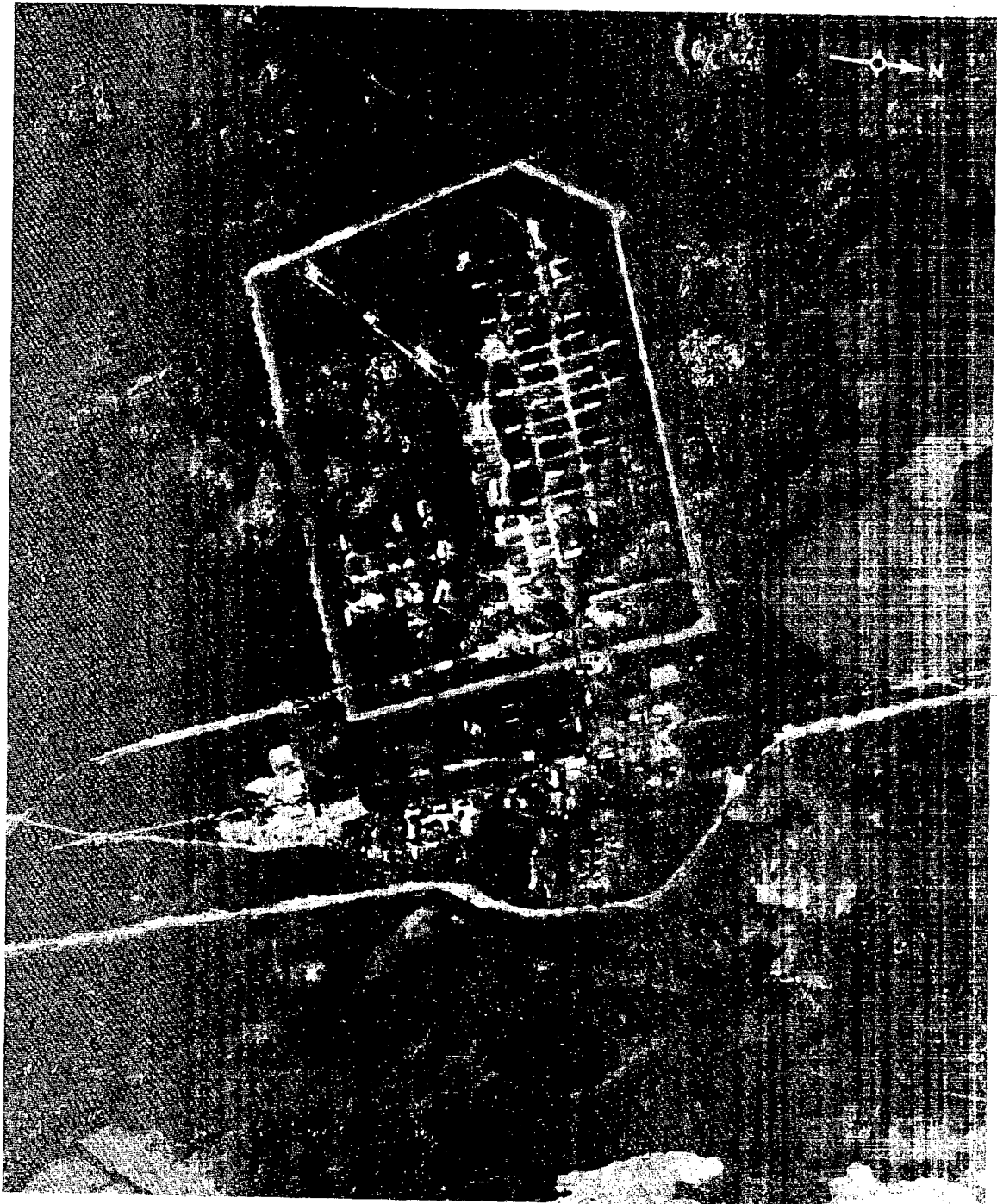


FIGURE 2. TOROPETS AMMUNITION DEPOT SOUTH, TOROPETS, USSR, OCTOBER 1964.

NPIC K-143B (6/65)

SUMMARY

Toropets Ammunition Depot South is located 16 kilometers (km) south of Toropets (Figure 1).

The installation covers approximately 480 acres and includes 4 administrative buildings, 7 barracks, 6 quarters, 77 storage buildings, 31 support buildings and a possible motor park

(Figures 2 and 3).

The installation was covered by 9 KEYHOLE missions between February 1962 and October 1964. Comparative analysis reveals that the installation was occupied during this period. No significant changes were observed.

DESCRIPTION OF INSTALLATION

Railroad Service

A rail spur serves the secured storage area. Two trackside docks (length undetermined) were observed, one in Area E1 and one in Area D.

Road Service

A secondary probable all-weather road provides access to Toropets and Staraya Toropa.

Administrative and Troop Housing Area

Area D contains 3 administration buildings, 7 barracks, at least 6 quarters, 2 storage buildings, and 21 support buildings. Track activity indicates usage of all buildings.

General Storage Areas

Area E1 contains 1 administration building, 66 storage buildings, and 11 support buildings. Track activity indicates usage of all buildings. One support building is located outside the secured area.

Area E2 contains 9 storage buildings. Track activity indicates usage of these buildings.

Equipment Storage/Maintenance Area

Area J is a 525- by 240-foot possible motor park. Track activity indicates use of this area.

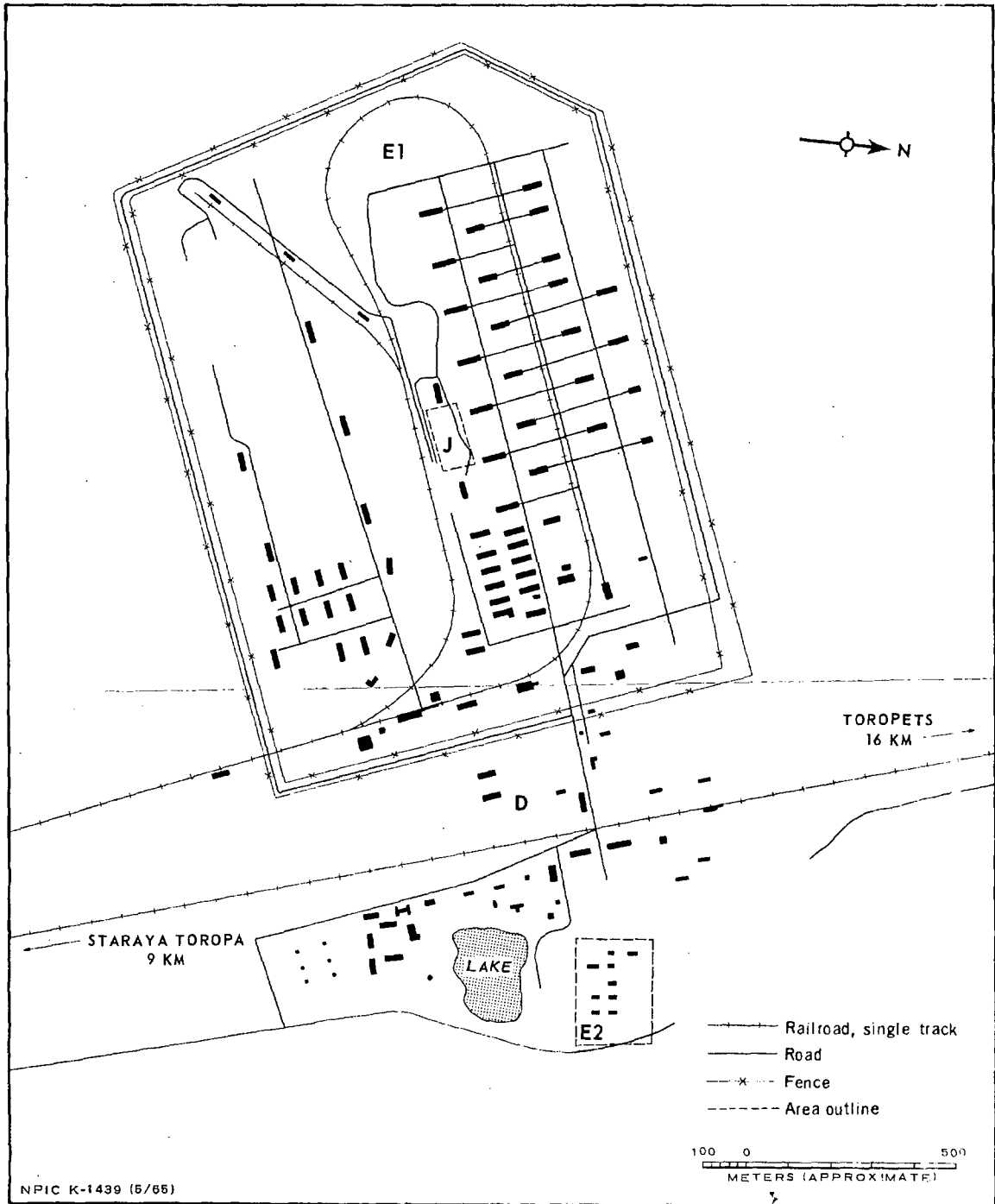
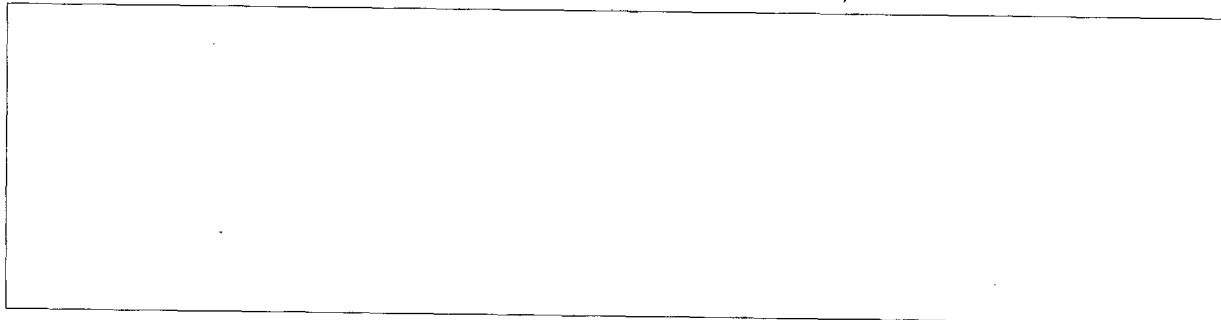


FIGURE 3. TOROPETS AMMUNITION DEPOT SOUTH. Sketch compiled from [redacted] June 1964.

REFERENCES

PHOTOGRAPHY



MAPS OR CHARTS

US Air Target Chart, Series 200, Sheet 0153-25HL, 3d ed, Feb 63 (SECRET)

DOCUMENTS

CIA/PIC/JB-21-58, *Storage Installation*, Oct 58 (TOP SECRET CHESS)

CIA/PIC/JM-7/59, *Toropets Storage Installation*, Apr 59 (TOP SECRET CHESS)

REQUIREMENT

C-RR-4-81,733 (partial answer)

NPIC PROJECT

11709/64

~~TOP SECRET~~

~~TOP SECRET~~