

HR70-14

~~TOP SECRET~~

Copy 82

6 Pages

TCS-80795/65

June 1965



PHOTOGRAPHIC INTERPRETATION REPORT

SOVIET MILITARY ORDER OF BATTLE MOSCOW MD

APPROVED FOR
RELEASE -
HISTORICAL
COLLECTION
DIVISION DATE:
06-18-2012



CIA



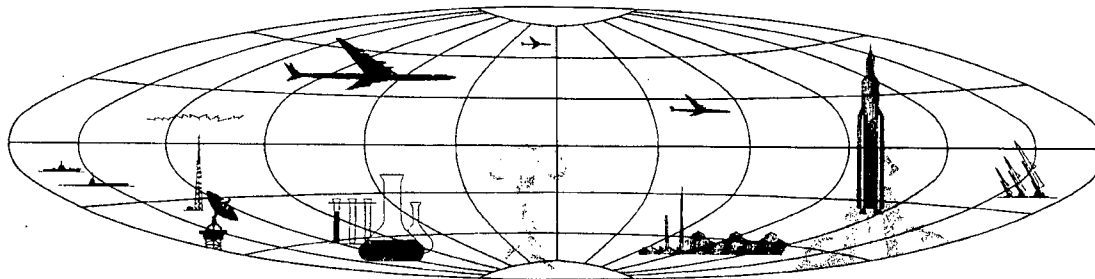
DIA

Handle Via ~~TALENT - KEYHOLE~~ Control Only

WARNING

This document contains classified information affecting the national security of the United States within the meaning of the espionage laws U. S. Code Title 18, Sections 793 and 794. The law prohibits its transmission or the revelation of its contents in any manner to an unauthorized person, as well as its use in any manner prejudicial to the safety or interest of the United States or for the benefit of any foreign government to the detriment of the United States. It is to be seen only by personnel especially indoctrinated and authorized to receive TALENT-KEYHOLE information. Its security must be maintained in accordance with KEYHOLE and TALENT regulations.

NATIONAL PHOTOGRAPHIC INTERPRETATION CENTER



~~TOP SECRET~~

GROUP 1
Excluded from automatic
downgrading and declassification

PREFACE

This report is one in a series on Soviet Ground Force and Logistic installations being prepared for a DIA/CIA Panel. The series is being coordinated, published and disseminated by NPIC. The photographic analysis is being performed by the NPIC Photographic Analysis Group, the CIA Photographic Intelligence Division (NPIC), and the Production Center 1PIa (DIA). The photographic analysis for this particular report was performed by the NPIC Photographic Analysis Group.

In the interest of uniformity, the titles and letter designators for the facilities observed at these installations are identical with those appearing in the project requirement. When a specific facility is not observed both its title and letter designator are omitted in the report.

Titles and letter designators for the various facilities are as follows: (A) railroad service, (B) road service, (C) landing strips, (D) administrative and troop housing areas, (E) storage areas, (F) ammunition storage areas, (G) POL storage areas, (H) other buildings and facilities, (J) equipment storage/maintenance areas, (K) athletic fields, (L) small-arms firing ranges, (M) driver training areas, (N) tank/assault gun firing ranges, (P) flat trajectory firing ranges, (Q) artillery emplacements (batteries), (R) infantry or combined arms field training area or courses, (S) special training facilities, (T) unidentified facilities or tracking activity.

Handle Via
TALENT-KEYHOLE
Control System Only

TCS-80795/65

PROBABLE BARRACKS AREA

(54-47N 032-01)

SMOLENSK, SMOLENSKAYA OBLAST, USSR

MOSCOW MD

BE No:

AL No: 5



COMOR No:

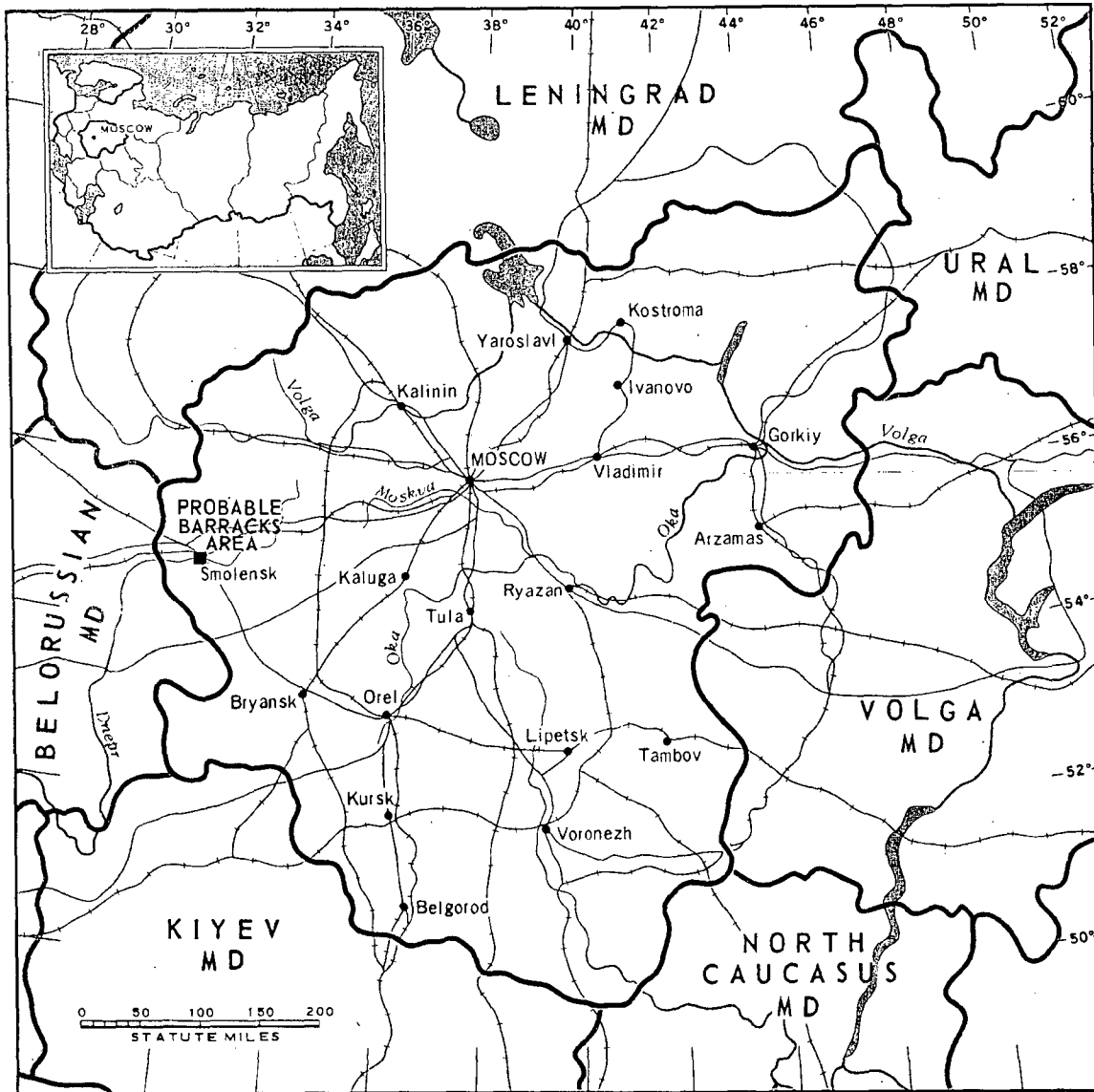


FIGURE 1. LOCATIONS OF PROBABLE BARRACKS AREA.

NPIC K-2147 (6/65)

Handle Via
TALENT-KEYHOLE
Control System Only

Handle Via
TALENT-KEYHOLE
Control System Only

TCS-80795/65

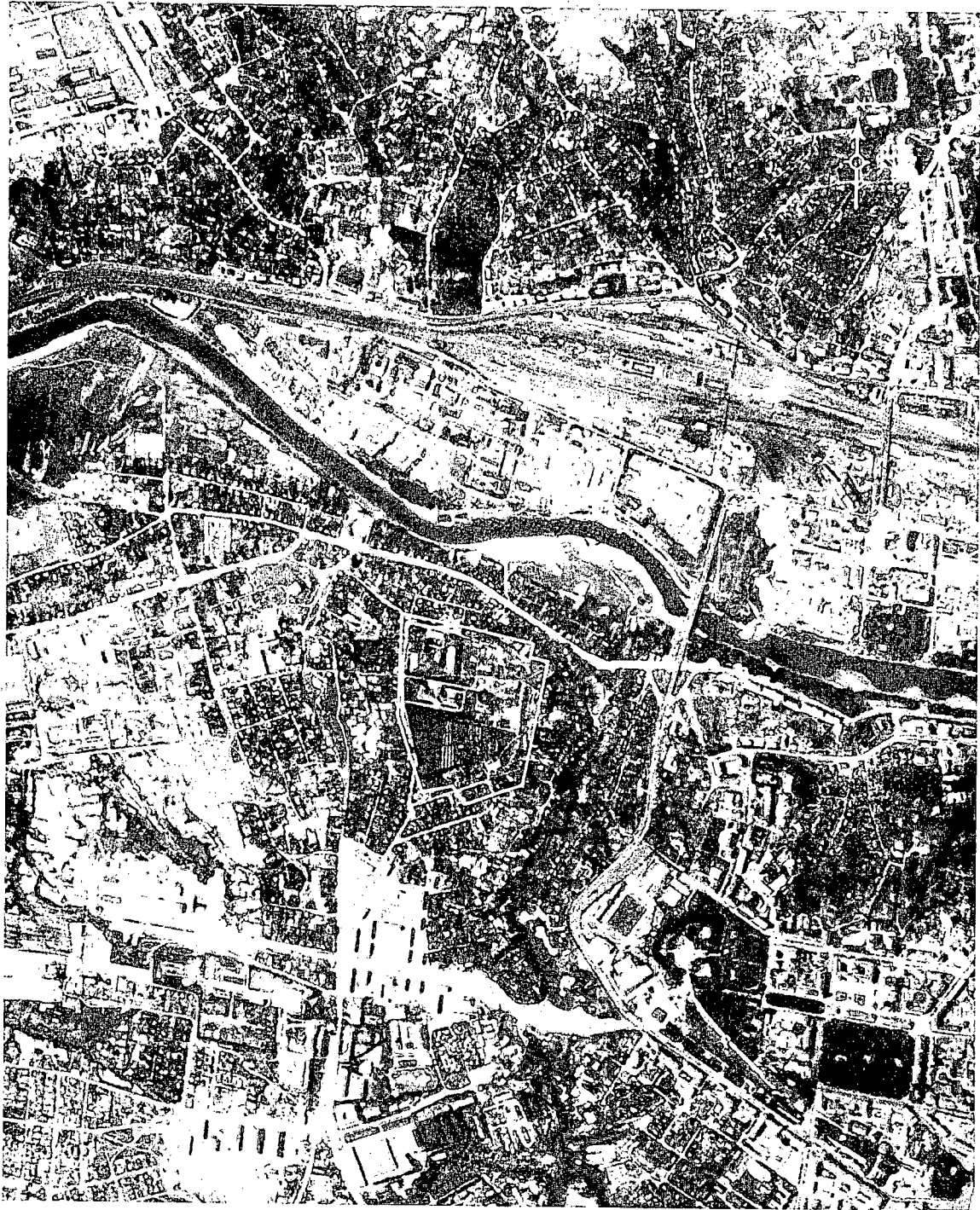


FIGURE 2. PROBABLE BARRACKS AREA, SMOLENSK, USSR, JUNE 1964.

NPIC X-2148 (6/65)

Handle Via
TALENT-KEYHOLE
Control System Only

SUMMARY

A probable barracks area is located in the west-central section of Smolensk, south of the Dnepr River (Figure 1).

The secured installation covers approximately 20 acres and contains 2 multistory barracks/administration buildings, 1 probable barracks, 3 probable storage buildings, and 4

support buildings (Figures 2 and 3).

The area was covered by July 1956 TALENT photography and 5 KEYHOLE missions between April 1962 and October 1964. One probable storage building was constructed between July 1956 and April 1962. The installation appears active and occupied.

DESCRIPTION OF INSTALLATION

Road Service

The installation is served by city streets.

probable barracks, 3 probable storage buildings, and 4 support buildings.

Administrative and Troop Housing Area

Area D contains a multistory E-shaped barracks/administration building, a separately secured barracks/administration building, a

POL Storage Area

Smolensk Petroleum Storage No 1 at 54-48N 032-05E [] contains 1 large, 6 medium, and 4 small-size POL tanks.

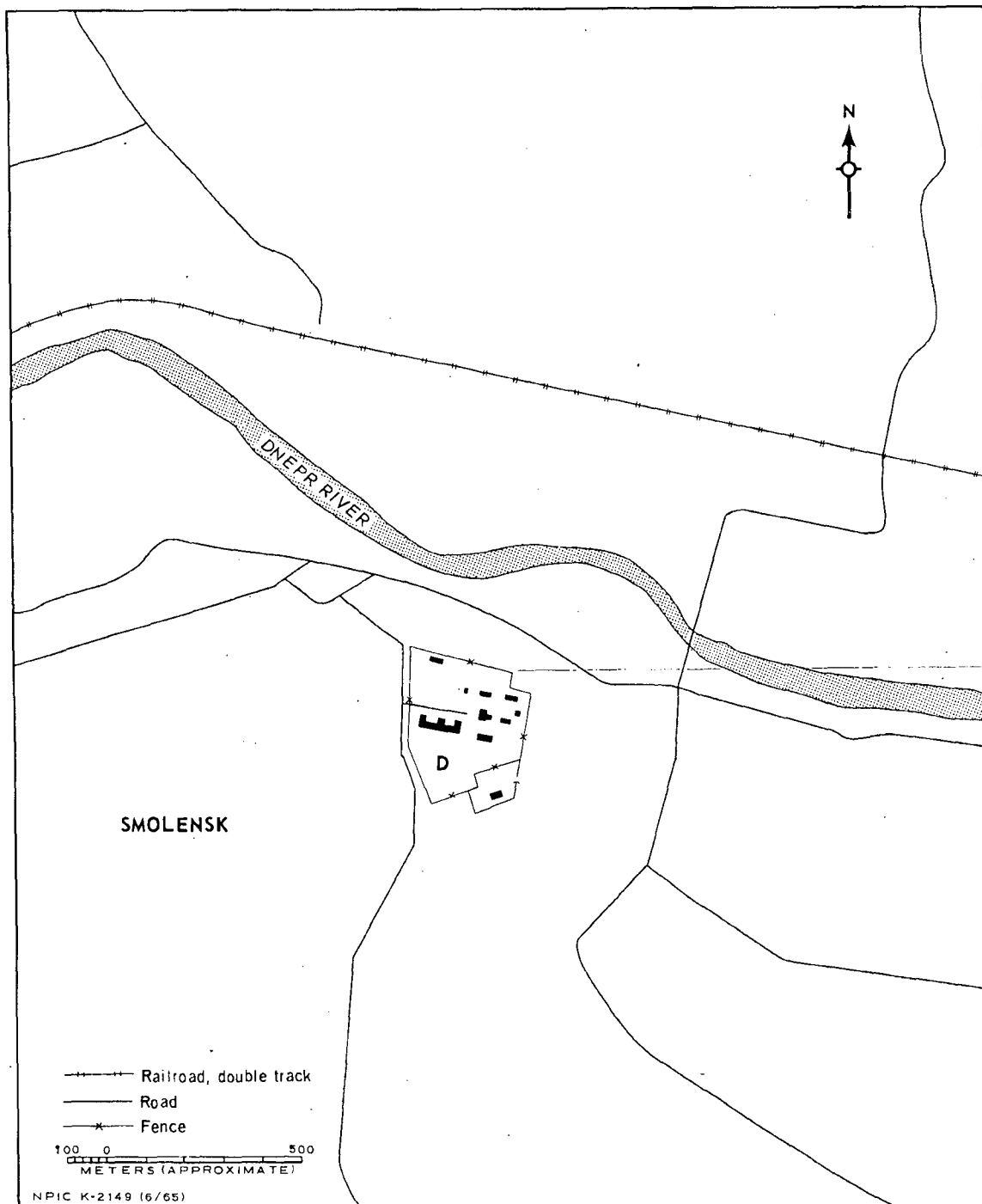
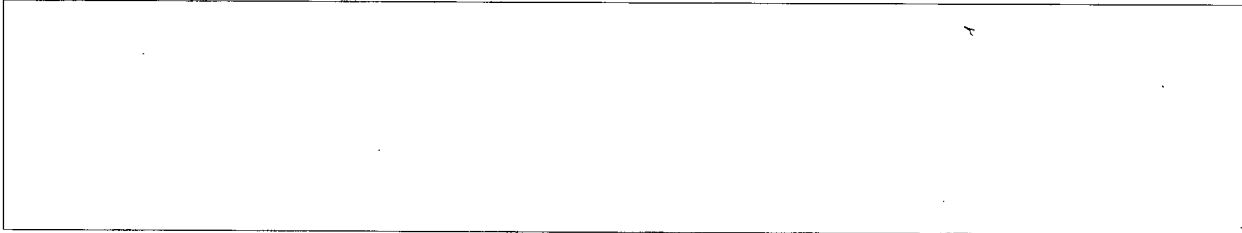


FIGURE 3. PROBABLE BARRACKS AREA. Sketch compiled from [] June 1964.

REFERENCES

PHOTOGRAPHY

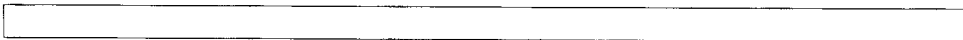


MAPS OR CHARTS

US Air Target Chart, Series 200, Sheet 0167-7IIL, 2d ed, Dec 62 (SECRET)

DOCUMENTS

Army. AP-70-56, *Military Installations, Vicinity of Smolensk, USSR*, Feb 61 (TOP SECRET CHESS)



Army. Intelligence Research Project P1-1301, *Installation List, Soviet Ground Forces USSR*, Jul 60 (SECRET)

REQUIREMENT

C-RR4-81,733 (partial answer)

NPIC PROJECT

11709/64