

HR70-14

~~TOP SECRET~~

Copy 82
6 Pages

TCS-80638/65
June 1965

PHOTOGRAPHIC INTERPRETATION REPORT

SOVIET MILITARY ORDER OF BATTLE MOSCOW MD

APPROVED FOR
RELEASE -
HISTORICAL
COLLECTION
DIVISION HR70-14
DATE: 07-18-2012



CIA



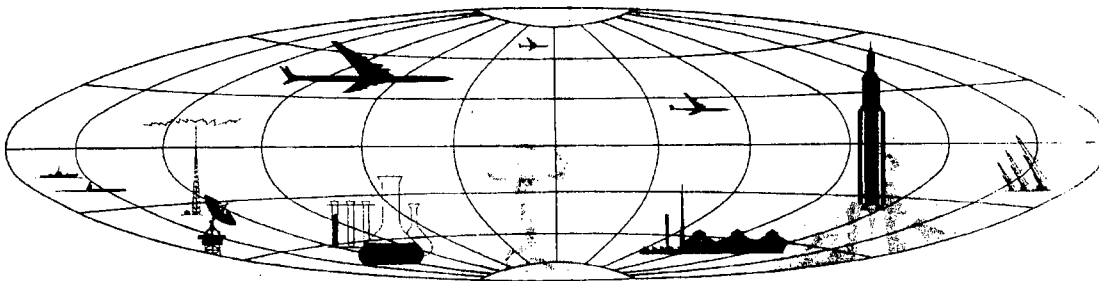
DIA

Handle Via **TALENT - KEYHOLE** Control Only

WARNING

This document contains classified information affecting the national security of the United States within the meaning of the espionage laws U. S. Code Title 18, Sections 793 and 794. The law prohibits its transmission or the revelation of its contents in any manner to an unauthorized person, as well as its use in any manner prejudicial to the safety or interest of the United States or for the benefit of any foreign government to the detriment of the United States. It is to be seen only by personnel especially indoctrinated and authorized to receive TALENT-KEYHOLE information. Its security must be maintained in accordance with KEYHOLE and TALENT regulations.

NATIONAL PHOTOGRAPHIC INTERPRETATION CENTER



~~TOP SECRET~~

GROUP 1
Excluded from automatic
downgrading and
declassification

PREFACE

This report is one in a series on Soviet Ground Force and Logistic installations being prepared for a DIA/CIA Panel. The series is being coordinated, published and disseminated by NPIC. The photographic analysis is being performed by the NPIC Photographic Analysis Group, the CIA Photographic Intelligence Division (NPIC), and the Production Center 1P1a (DIA). The photographic analysis for this particular report was performed by the NPIC Photographic Analysis Group.

In the interest of uniformity, the titles and letter designators for the facilities observed at these installations are identical with those appearing in the project requirement. When a specific facility is not observed both its title and letter designator are omitted in the report.

Titles and letter designators for the various facilities are as follows: (A) railroad service, (B) road service, (C) landing strips, (D) administrative and troop housing areas, (E) storage areas, (F) ammunition storage areas, (G) POL storage areas, (H) other buildings and facilities, (J) equipment storage/maintenance areas, (K) athletic fields, (L) small arms firing ranges, (M) driver training areas, (N) tank/assault gun firing ranges, (P) flat trajectory firing ranges, (Q) artillery emplacements (batteries), (R) infantry or combined arms field training area or courses, (S) special training facilities, (T) unidentified facilities or tracking activity.

LIPETSK AMMUNITION DEPOT KRASNY LUCH 737

(52-31N 039-45E)

LIPETSK, LIPETSKAYA OBLAST, USSR

MOSCOW MD

AL No:

COMOR No:

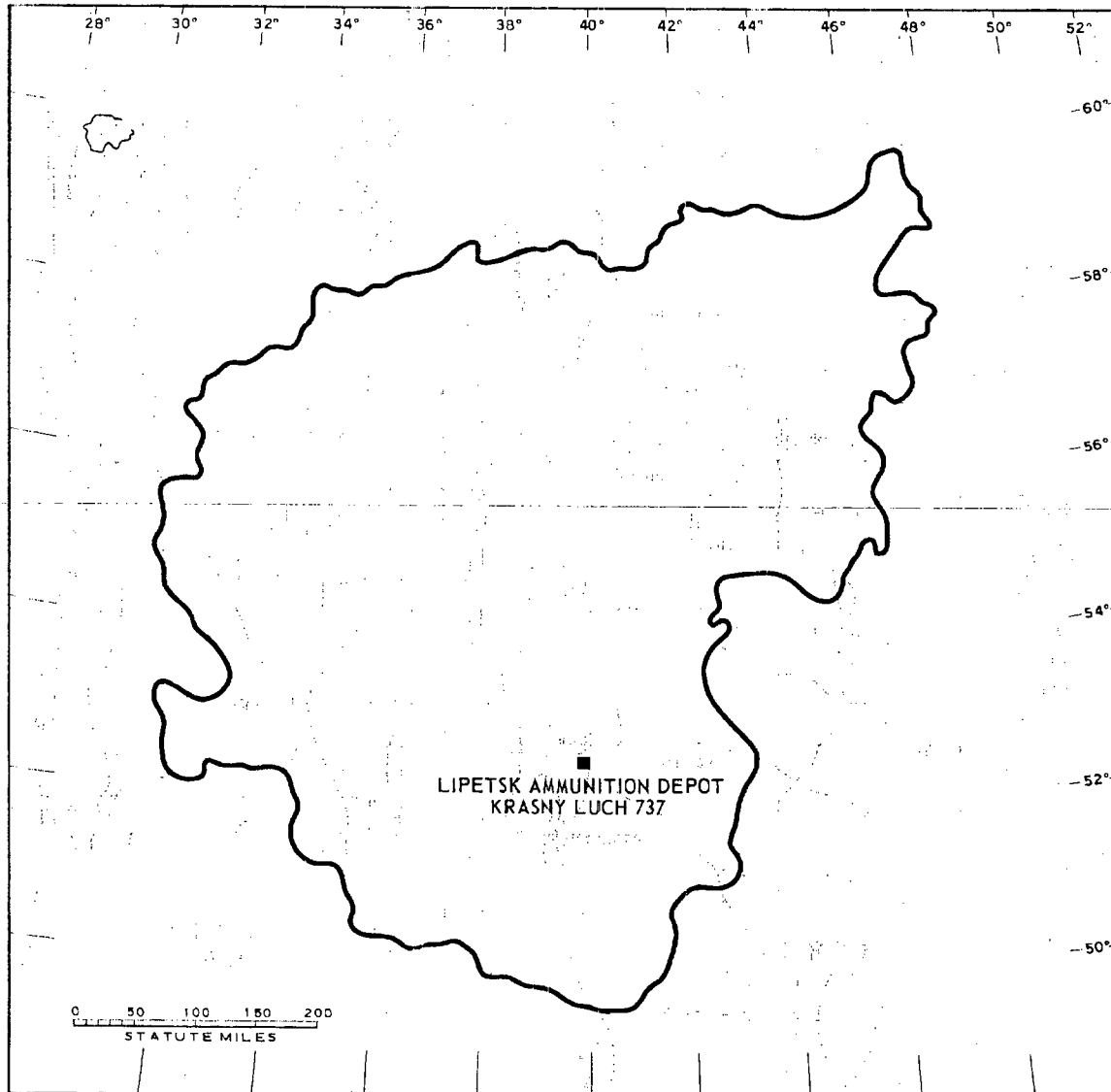


FIGURE 1. LOCATION OF LIPETSK AMMUNITION DEPOT KRASNY LUCH 737.

NPIC K-1514 (6/65)

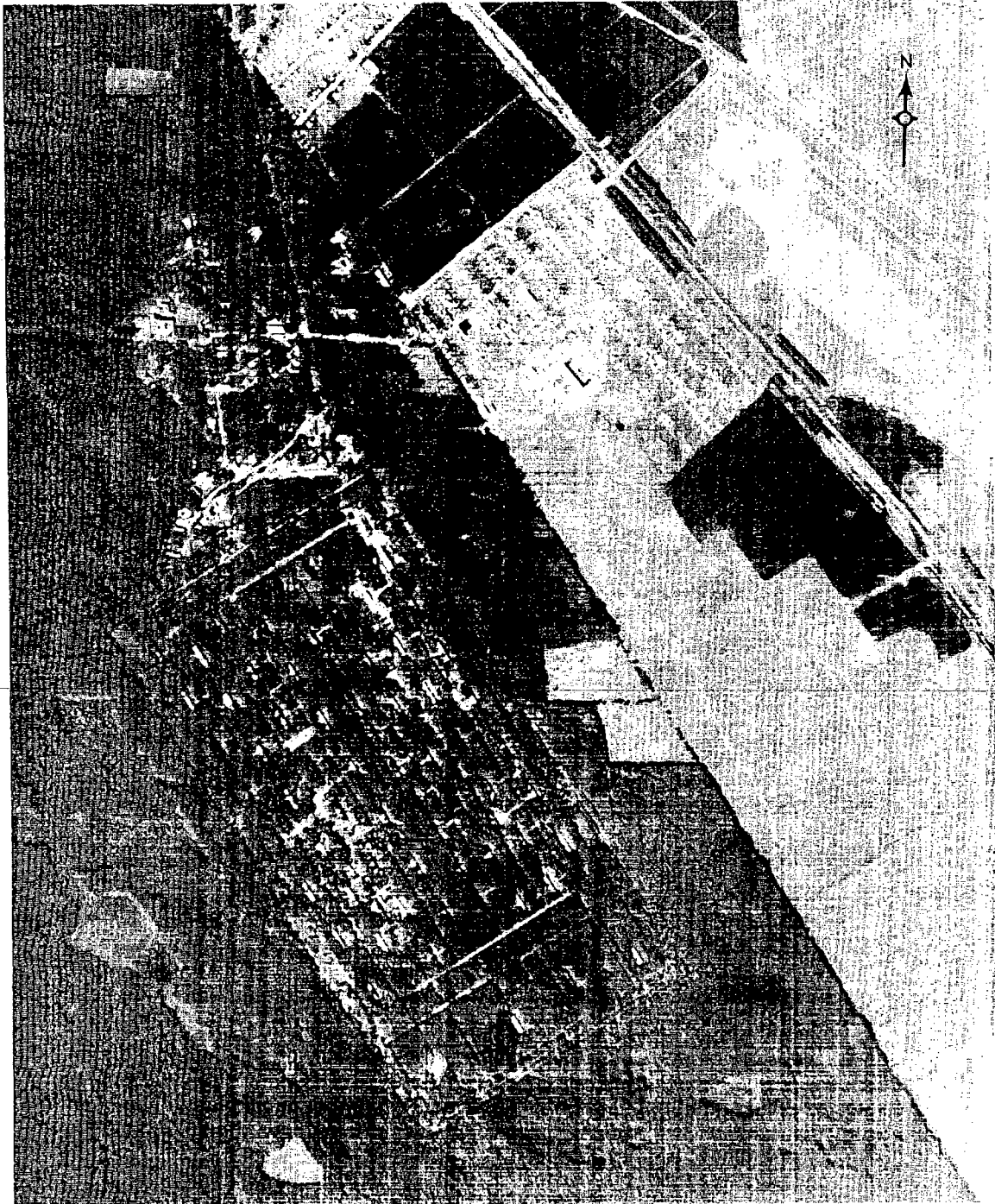


FIGURE 2. LIPETSK AMMUNITION DEPOT KRASNY LUCH 737, LIPETSK, USSR, SEPTEMBER 1964.

NPIC K-1515 (6/65)

SUMMARY

Lipetsk Ammunition Depot Krasny Luch 737 is located 15 kilometers (km) southeast of Lipetsk (Figure 1).

The installation covers approximately 485 acres and contains a triple-secured storage area with 64 ammunition storage buildings, 2 rail-to-road transfer buildings, and 2 support buildings. A support area immediately north contains an administration building, 3 barracks,

10 probable storage buildings, and 14 support buildings (Figures 2 and 3).

The area is covered on TALENT photography of February 1960 and on 8 KEYHOLE missions between June 1962 and October 1964. Comparative analysis reveals no change in facilities and a light level of activity throughout this period.

DESCRIPTION OF INSTALLATION

Railroad Service

The installation is served by 3 sidings from a spur of the Lipetsk-Gryazi rail line.

Road Service

A secondary road provides access to Lipetsk.

Administration and Troop Housing Area

Area D contains a U-shaped administration building, 3 barracks, 10 probable storage buildings, and 14 support buildings.

Ammunition Storage Area

Area F contains 64 ammunition storage buildings, 2 support buildings, and 2 rail-to-road transfer buildings.

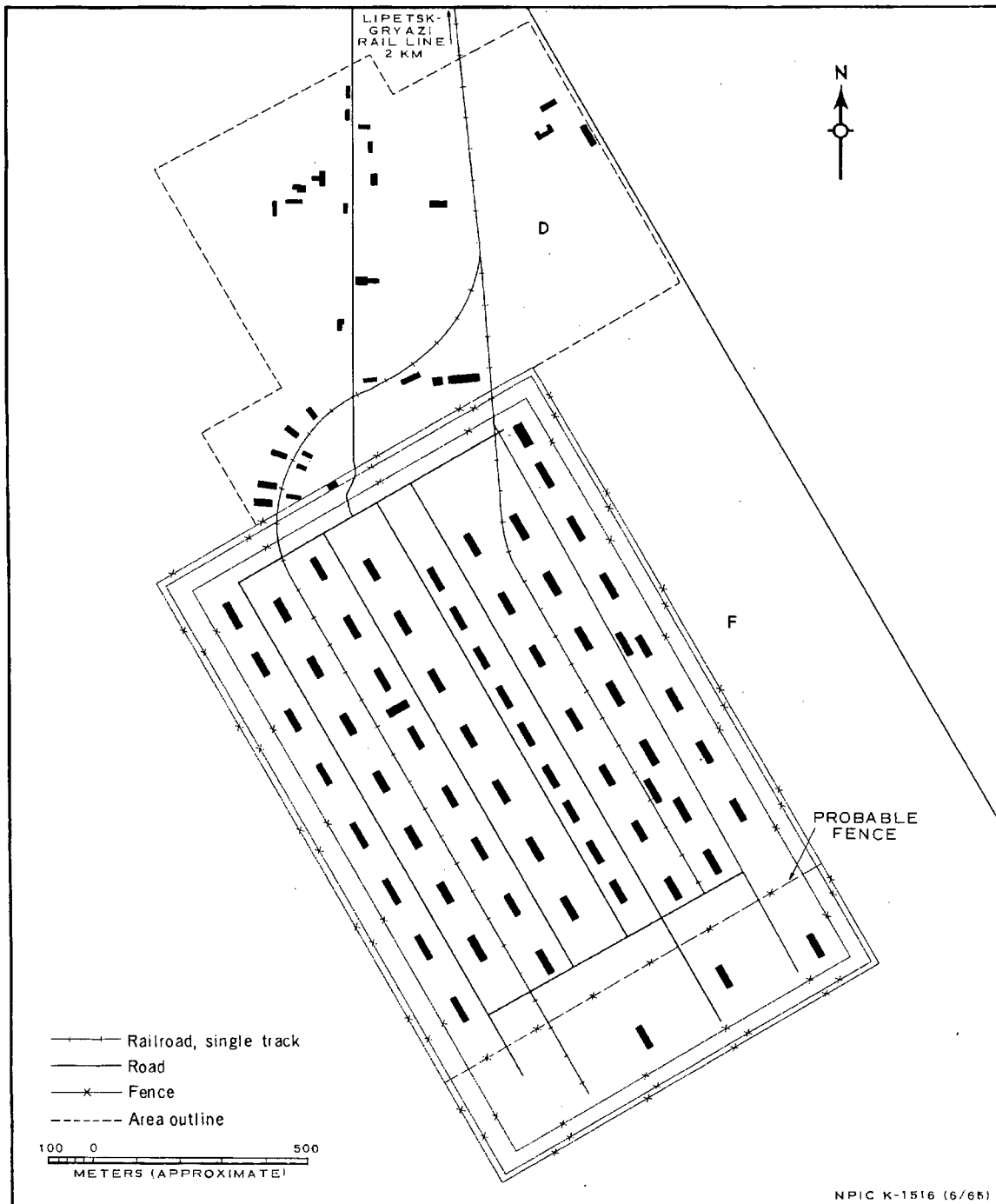
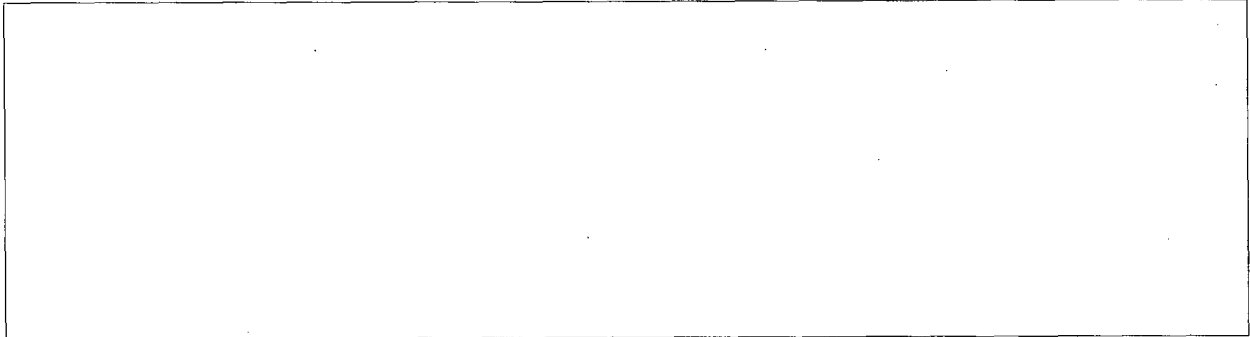


FIGURE 3. LIPETSK AMMUNITION DEPOT KRASNY LUCH 737. Sketch compiled from
October 1964.

REFERENCES

PHOTOGRAPHY



MAPS OR CHARTS

US Air Target Chart, Series 200, Sheet 0166-21HL, 3d ed, Apr 64 (SECRET)

DOCUMENTS



REQUIREMENT

C-RR4-81,733 (partial answer)

NPIC PROJECT

11709/64

~~TOP SECRET~~

~~TOP SECRET~~