

HR70-14  
Copy 82  
6 Pages

TOP SECRET

TCS-80791/65

June 1965



PHOTOGRAPHIC INTERPRETATION REPORT

APPROVED FOR  
RELEASE -  
HISTORICAL  
COLLECTION  
DIVISION DATE:  
06-18-2012

# SOVIET MILITARY ORDER OF BATTLE MOSCOW MD



CIA



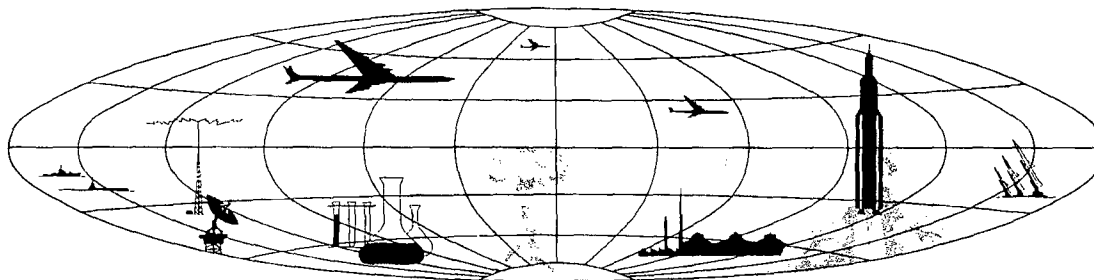
DIA

Handle Via **TALENT - KEYHOLE** Control Only

WARNING

This document contains classified information affecting the national security of the United States within the meaning of the espionage laws U. S. Code Title 18, Sections 793 and 794. The law prohibits its transmission or the revelation of its contents in any manner to an unauthorized person, as well as its use in any manner prejudicial to the safety or interest of the United States or for the benefit of any foreign government to the detriment of the United States. It is to be seen only by personnel especially indoctrinated and authorized to receive TALENT-KEYHOLE information. Its security must be maintained in accordance with KEYHOLE and TALENT regulations.

NATIONAL PHOTOGRAPHIC INTERPRETATION CENTER



TOP SECRET

GROUP 1  
Excluded from automatic  
downgrading and declassification

~~TOP SECRET RUFF~~

Handle Via  
TALENT-KEYHOLE  
Control System Only

TCS-80791/65

## PREFACE

This report is one in a series on Soviet Ground Force and Logistic installations being prepared for a DIA/CIA Panel. The series is being coordinated, published and disseminated by NPIC. The photographic analysis is being performed by the NPIC Photographic Analysis Group, the CIA Photographic Intelligence Division (NPIC), and the Production Center 1P1a (DIA). The photographic analysis for this particular report was performed by the NPIC Photographic Analysis Group.

In the interest of uniformity, the titles and letter designators for the facilities observed at these installations are identical with those appearing in the project requirement. When a specific facility is not observed both its title and letter designator are omitted in the report.

Titles and letter designators for the various facilities are as follows: (A) railroad service, (B) road service, (C) landing strips, (D) administrative and troop housing areas, (E) storage areas, (F) ammunition storage areas, (G) POL storage areas, (H) other buildings and facilities, (J) equipment storage/maintenance areas, (K) athletic fields, (L) small-arms firing ranges, (M) driver training areas, (N) tank/assault gun firing ranges, (P) flat trajectory firing ranges, (Q) artillery emplacements (batteries), (R) infantry or combined arms field training area or courses, (S) special training facilities, (T) unidentified facilities or tracking activity.

- 1 -

~~TOP SECRET RUFF~~

Handle Via  
TALENT-KEYHOLE  
Control System Only

Handle Via  
TALENT-KEYHOLE  
Control System Only

STORAGE AREA  
(55-52N 039-07E)

OREKHOVO-ZUYEVO, MOSKOVSKAYA OBLAST, USSR  
MOSCOW MD

BE No:

AL No:

COMOR No:

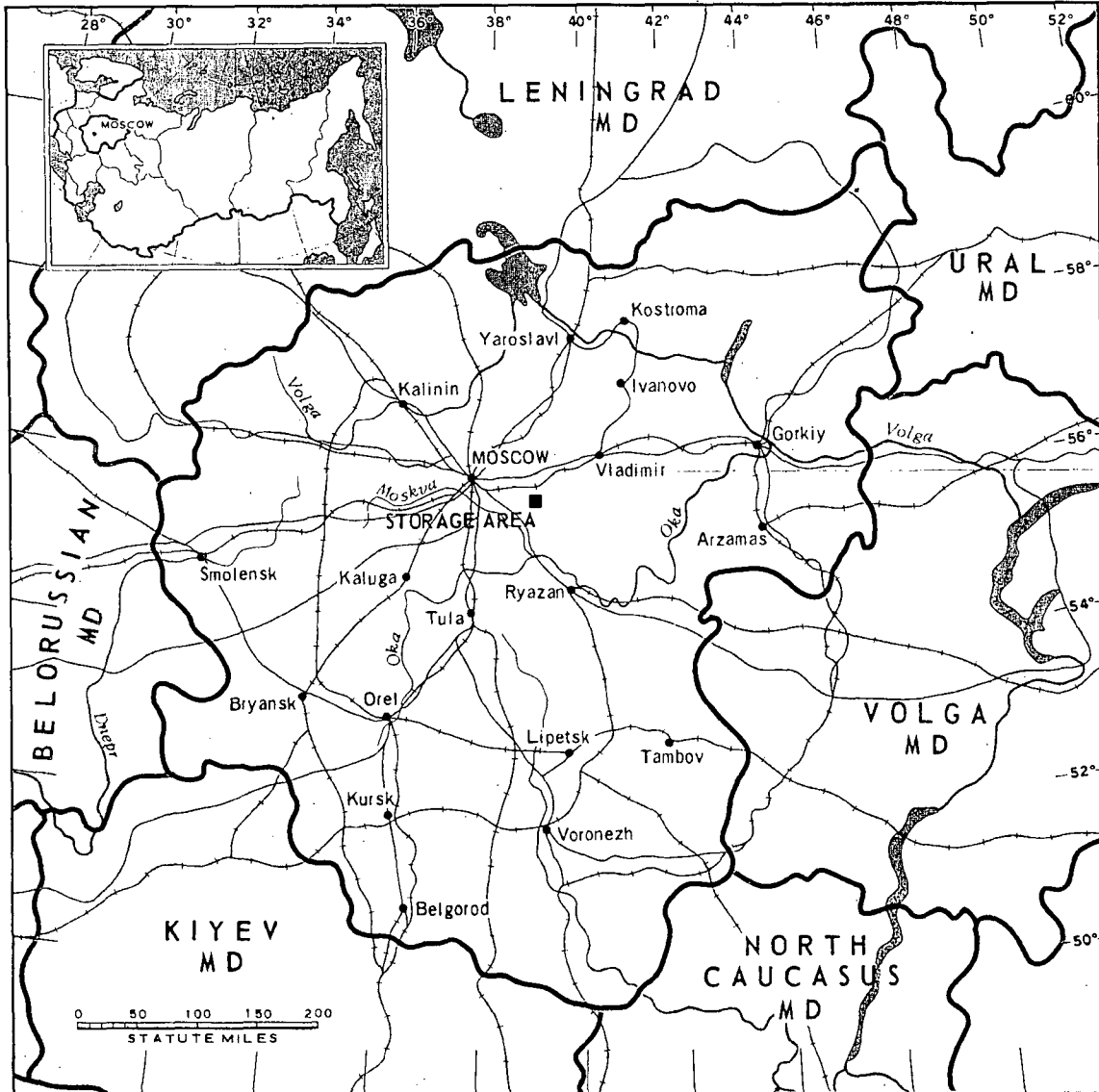


FIGURE 1. LOCATION OF STORAGE AREA.

NPIC K-2143 (6/65)

Handle Via  
TALENT-KEYHOLE  
Control System Only

Handle Via  
TALENT-KEYHOLE  
Control System Only



FIGURE 2. STORAGE AREA, OREKHOVO-ZUYEVO, USSR, SEPTEMBER 1964.

NPIC K-2144 (8/65)

Handle Via  
TALENT-KEYHOLE  
Control System Only

Handle Via  
TALENT-KEYHOLE  
Control System Only

SUMMARY

A storage area is located 10 kilometers (km) northeast of Orekhovo-Zuyevo between the Orekhovo-Zuyevo--Vladimir rail line and the Klyazma River (Figure 1).

The installation covers approximately 220 acres and contains a double-secured storage area with 45 storage buildings, 1 probable maintenance building, 1 probable transloading building, and a support area with 1 possible

administration building, 4 possible barracks, 10 quarters, and 7 support buildings (Figures 2 and 3).

The installation was covered by 7 KEYHOLE missions between April 1962 and October 1964. Comparative analysis reveals no change in facilities and only light activity throughout the period.

DESCRIPTION OF INSTALLATION

Railroad Service

The area is served by a spur from the Orekhovo-Zuyevo--Vladimir rail line.

Road Service

The area is connected by secondary roads to the Orekhovo-Zuyevo--Vladimir highway.

Administrative and Troop Housing Area

Area D contains 1 possible administration building, 4 possible barracks, 10 quarters, and 7 support buildings.

General Storage Area

Area E contains 45 storage buildings, 1 probable maintenance building, and 1 probable transloading building.

Handle Via  
TALENT-KEYHOLE  
Control System Only

TCS-80791/65

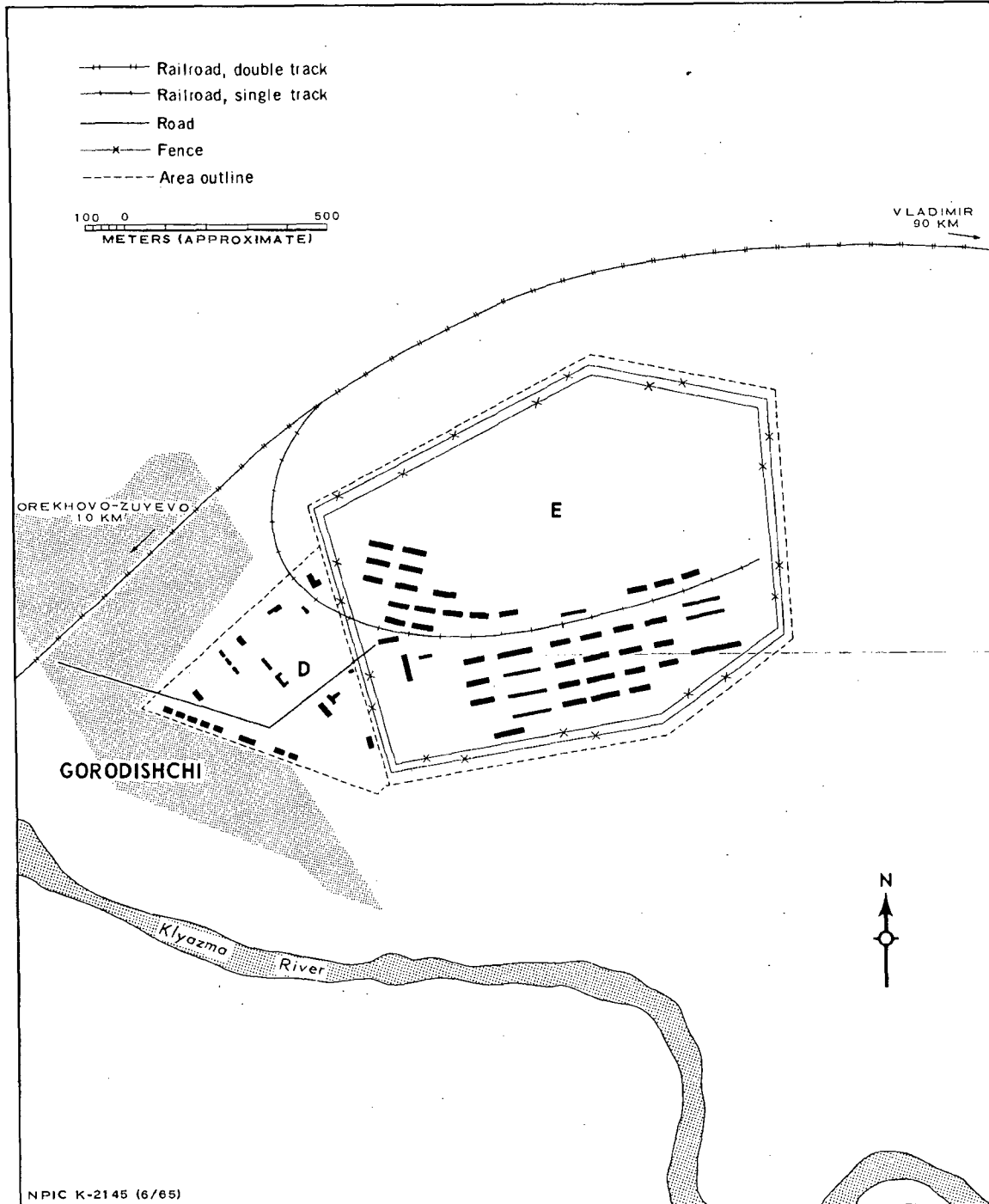


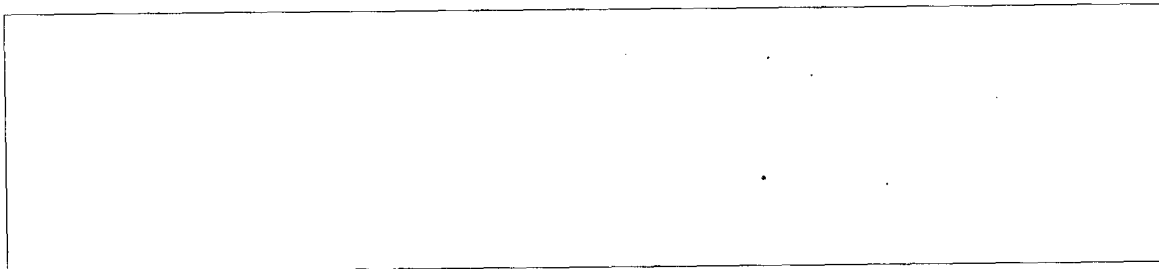
FIGURE 3. STORAGE AREA. Sketch compiled from [redacted] October 1964.

Handle Via  
TALENT-KEYHOLE  
Control System Only

Handle Via  
TALENT-KEYHOLE  
Control System Only

REFERENCES

PHOTOGRAPHY



MAPS OR CHARTS

US Air Target Chart, Series 200, Sheet 0166-1HL, 2d ed, Nov 62 (SECRET)

REQUIREMENT

C-RR4-81,733 (partial answer)

NPIC PROJECT

11709/64

Handle Via  
TALENT-KEYHOLE  
Control System Only

HR70-14

~~TOP SECRET~~

Copy 82  
6 Pages

TCS-80651/65  
June 1965



PHOTOGRAPHIC INTERPRETATION REPORT

# SOVIET MILITARY ORDER OF BATTLE MOSCOW MD

APPROVED FOR RELEASE -  
HISTORICAL COLLECTION  
DIVISION HR70-14 DATE:  
07-18-2012



CIA



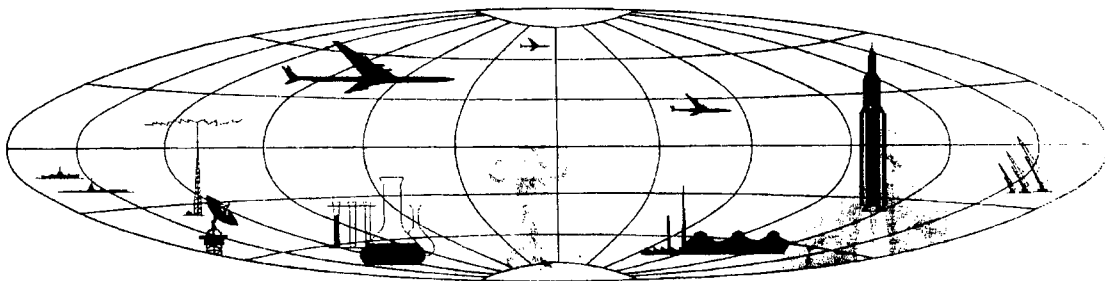
DIA

Handle Via **TALENT - KEYHOLE** Control Only

WARNING

This document contains classified information affecting the national security of the United States within the meaning of the espionage laws U. S. Code Title 18, Sections 793 and 794. The law prohibits its transmission or the revelation of its contents in any manner to an unauthorized person, as well as its use in any manner prejudicial to the safety or interest of the United States or for the benefit of any foreign government to the detriment of the United States. It is to be seen only by personnel especially indoctrinated and authorized to receive TALENT-KEYHOLE information. Its security must be maintained in accordance with KEYHOLE and TALENT regulations.

NATIONAL PHOTOGRAPHIC INTERPRETATION CENTER



~~TOP SECRET~~

GROUP 1  
Excluded from automatic  
downgrading and declassification



PREFACE

This report is one in a series on Soviet Ground Force and Logistic installations being prepared for a DIA/CIA Panel. The series is being coordinated, published and disseminated by NPIC. The photographic analysis is being performed by the NPIC Photographic Analysis Group, the CIA Photographic Intelligence Division (NPIC), and the Production Center 1P1a (DIA). The photographic analysis for this particular report was performed by the NPIC Photographic Analysis Group.

In the interest of uniformity, the titles and letter designators for the facilities observed at these installations are identical with those appearing in the project requirement. When a specific facility is not observed both its title and letter designator are omitted in the report.

Titles and letter designators for the various facilities are as follows: (A) railroad service, (B) road service, (C) landing strips, (D) administrative and troop housing areas, (E) storage areas, (F) ammunition storage areas, (G) POL storage areas, (H) other buildings and facilities, (J) equipment storage/maintenance areas, (K) athletic fields, (L) small arms firing ranges, (M) driver training areas, (N) tank/assault gun firing ranges, (P) flat trajectory firing ranges, (Q) artillery emplacements (batteries), (R) infantry or combined arms field training area or courses, (S) special training facilities, (T) unidentified facilities or tracking activity.

SECURED STORAGE AREA

(57-58N 033-53E)

BEREZAYKA, KALININSKAYA OBLAST, USSR

MOSCOW MD

BE No

AL No:

COMOR No:

HR70-14

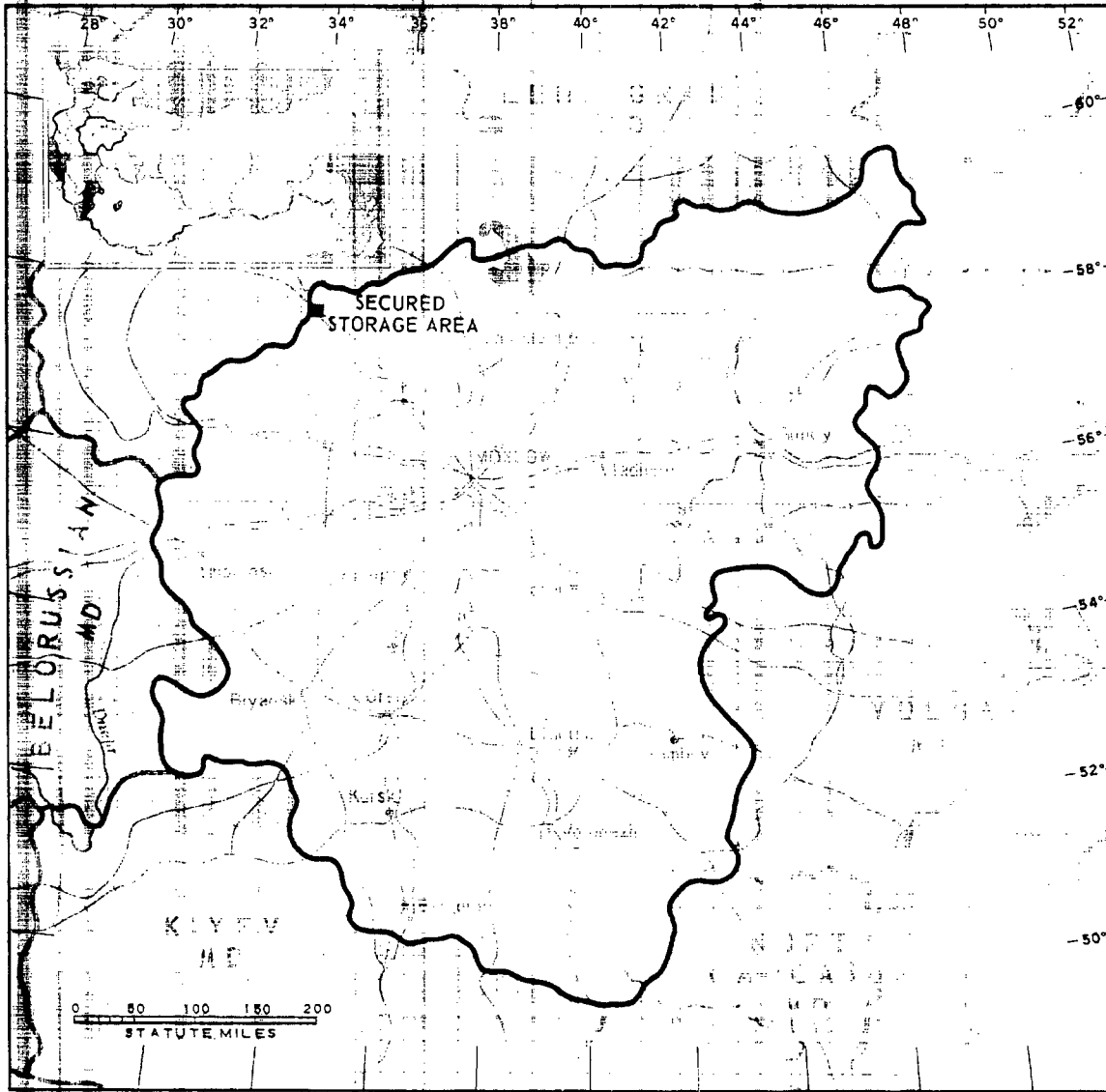
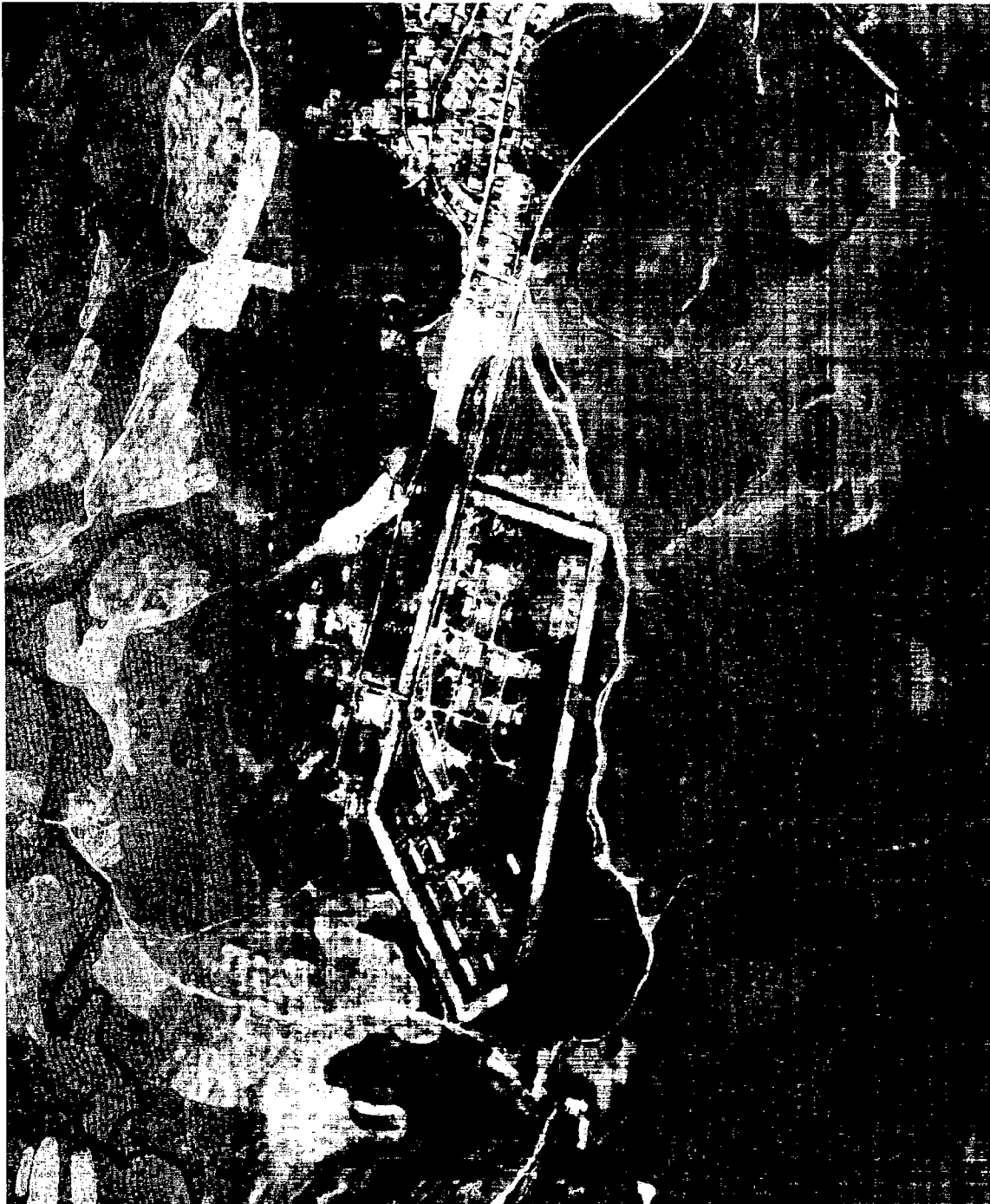


FIGURE 1. LOCATION OF SECURED STORAGE AREA.



NPIC K-1596 (6/65)

FIGURE 2. SECURED STORAGE AREA, BEREZAYKA, USSR, JUNE 1964.

SUMMARY

A secured storage area is located on the southwest edge of Berezayka (Figure 1).

This installation covers approximately 200 acres and contains a support area with 2 administration buildings, 4 barracks, and 12 support buildings and a double-secured storage area with 26 storage buildings, 3 support buildings, and

an open storage area (Figures 2 and 3). The military significance of this installation is undetermined.

The area is covered on 8 KEYHOLE missions between April 1962 and October 1964. The installation appears to be occupied on all coverage and no change is discernible.

DESCRIPTION OF INSTALLATION

Railroad Service

A spur from the Chudovo-Vyshniy-Volochek rail line enters the installation and divides into 3 sidings.

Road Service

A secondary road provides access to Berezayka.

Administration and Troop Housing Area

Area D contains 2 administration buildings, 4 barracks, and 12 support buildings.

General Storage Area

Area E is doubly secured and contains 26 storage buildings and 3 support buildings. Twelve of the storage buildings are rail served. A small open storage area is in the northeast corner of the secured area.

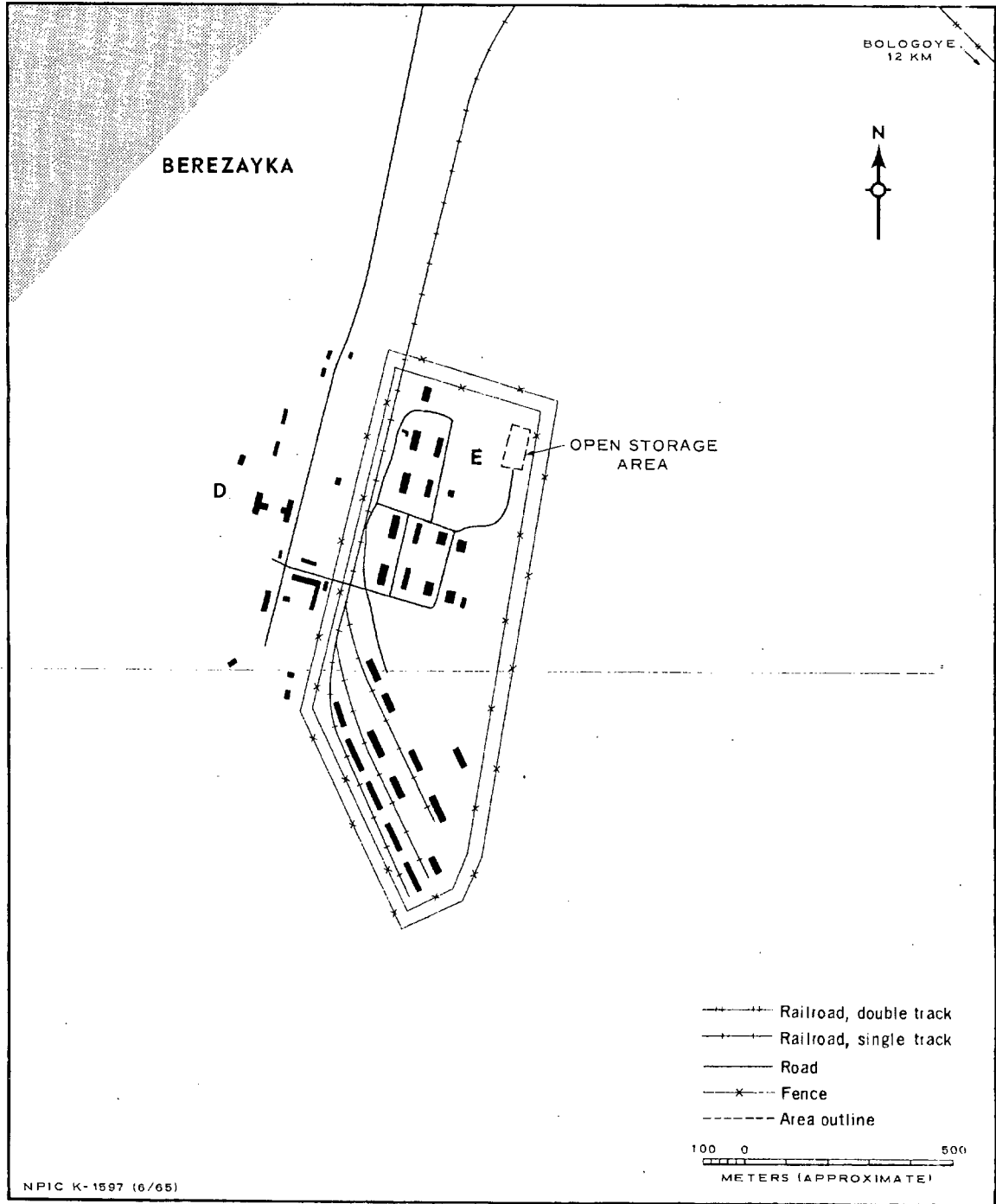
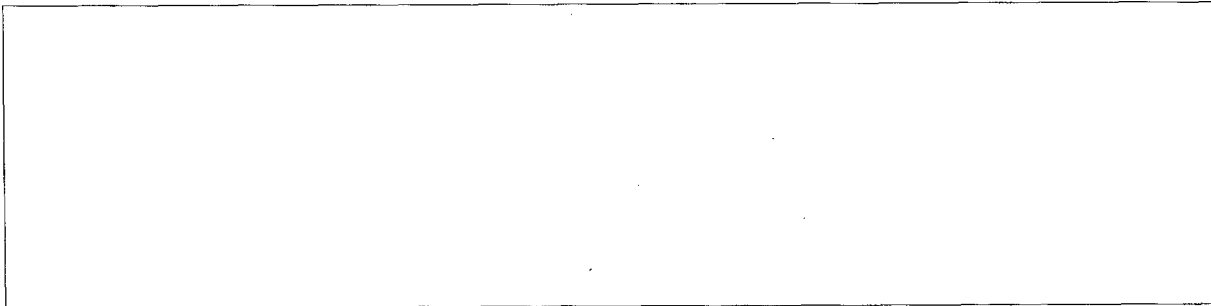


FIGURE 3. SECURED STORAGE AREA. Sketch compiled from [redacted], June 1964.

REFERENCES

PHOTOGRAPHY



MAPS OR CHARTS

US Air Target Chart, Series 200, Sheet 154-11HL, 3d ed, Nov 63 (SECRET)

REQUIREMENT

C-RR4-81,733 (partial answer)

NPIC PROJECT

11709/64

~~TOP SECRET~~

~~TOP SECRET~~