

HR70-14

~~TOP SECRET~~

Copy 82
6 Pages

TCS-80724/65
June 1965



PHOTOGRAPHIC INTERPRETATION REPORT

SOVIET MILITARY ORDER OF BATTLE MOSCOW MD

APPROVED FOR RELEASE
HISTORICAL COLLECTION
DIVISION DATE: 06-18-2012



CIA



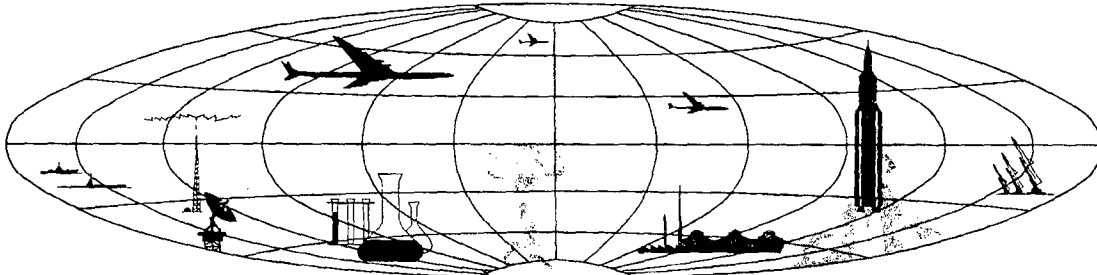
DIA

Handle Via **TALENT - KEYHOLE** Control Only

WARNING

This document contains classified information affecting the national security of the United States within the meaning of the espionage laws U. S. Code Title 18, Sections 793 and 794. The law prohibits its transmission or the revelation of its contents in any manner to an unauthorized person, as well as its use in any manner prejudicial to the safety or interest of the United States or for the benefit of any foreign government to the detriment of the United States. It is to be seen only by personnel especially indoctrinated and authorized to receive TALENT-KEYHOLE information. Its security must be maintained in accordance with KEYHOLE and TALENT regulations.

NATIONAL PHOTOGRAPHIC INTERPRETATION CENTER



~~TOP SECRET~~

GROUP 1
Excluded from automatic
downgrading and declassification

~~TOP SECRET RUFF~~

Handle Via
TALENT-KEYHOLE
Control System Only

TCS-80724/65

PREFACE

This report is one in a series on Soviet Ground Force and Logistic installations being prepared for a DIA/CIA Panel. The series is being coordinated, published and disseminated by NPIC. The photographic analysis is being performed by the NPIC Photographic Analysis Group, the CIA Photographic Intelligence Division (NPIC), and the Production Center 1P1a (DIA). The photographic analysis for this particular report was performed by the NPIC Photographic Analysis Group.

In the interest of uniformity, the titles and letter designators for the facilities observed at these installations are identical with those appearing in the project requirement. When a specific facility is not observed both its title and letter designator are omitted in the report.

~~Titles and letter designators for the various facilities are as follows:~~ (A) railroad service, (B) road service, (C) landing strips, (D) administrative and troop housing areas, (E) storage areas, (F) ammunition storage areas, (G) POL storage areas, (H) other buildings and facilities, (J) equipment storage/maintenance areas, (K) athletic fields, (L) small arms firing ranges, (M) driver training areas, (N) tank/assault gun firing ranges, (P) flat trajectory firing ranges, (Q) artillery emplacements (batteries), (R) infantry or combined arms field training area or courses, (S) special training facilities, (T) unidentified facilities or tracking activity.

- 1 -

~~TOP SECRET RUFF~~

Handle Via
TALENT-KEYHOLE
Control System Only

STORAGE AREA

(57-12N 039-24E)

ROSTOV, YAROSLAVSKAYA OBLAST, USSR

MOSCOW MD

BE No:

AL No:



COMOR No:

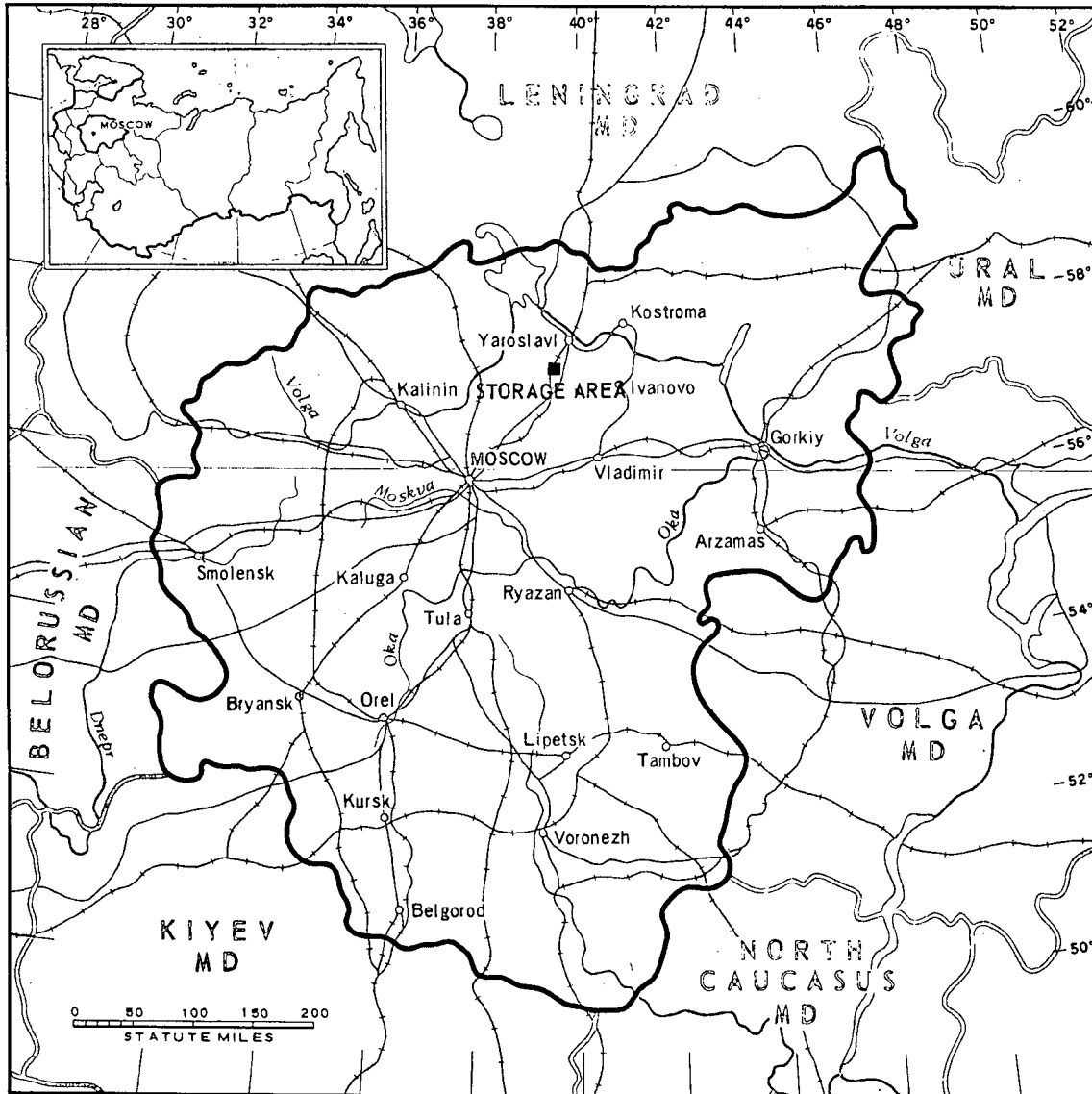


FIGURE 1. LOCATION OF STORAGE AREA.

NPIC K-1903 10/65

Handle Via
TALENT-KEYHOLE
Control System Only

TCS-80724/65

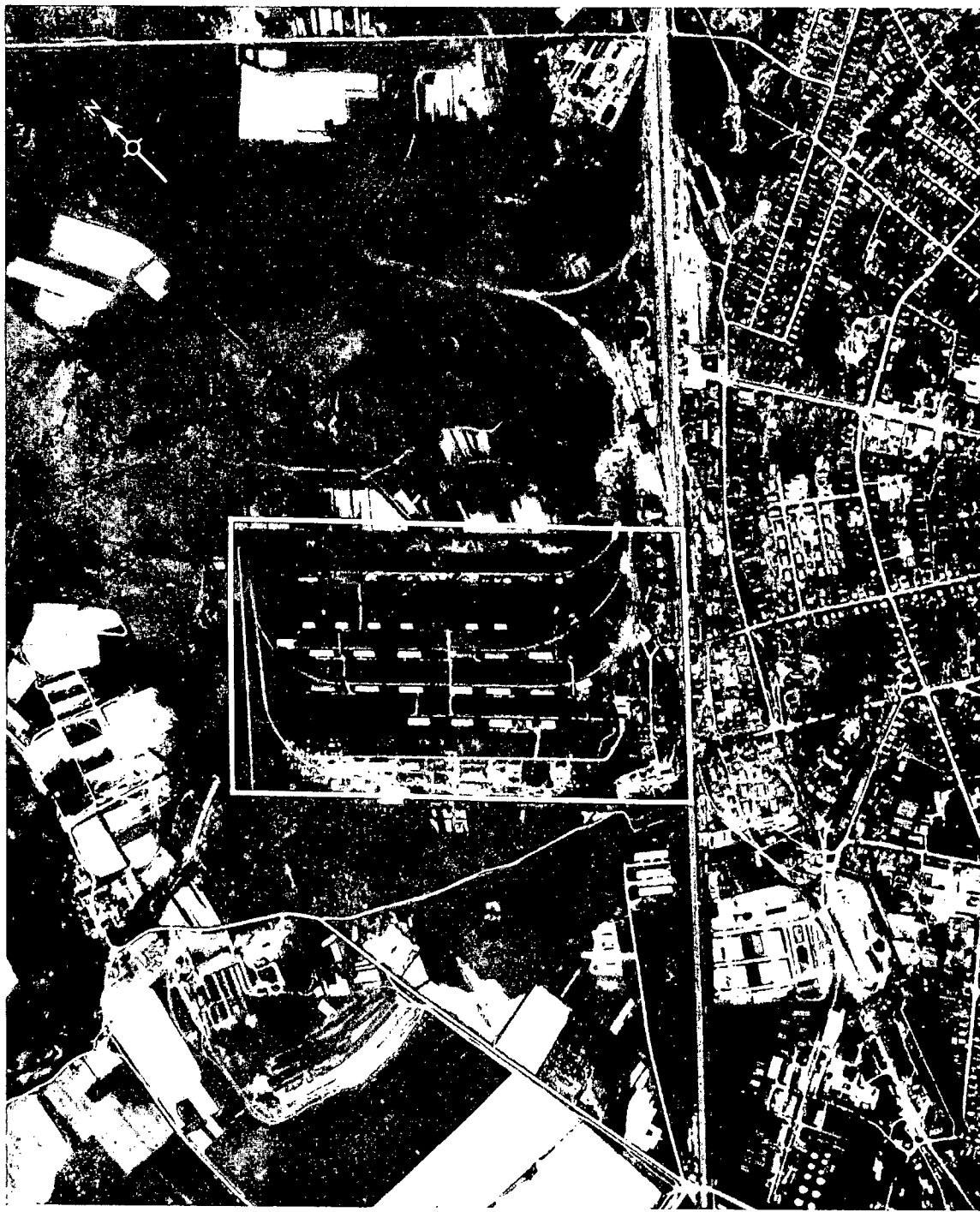


FIGURE 2. STORAGE AREA, ROSTOV, USSR, JUNE 1964.

Handle Via
TALENT-KEYHOLE
Control System Only

SUMMARY

A storage area is located on the north-western edge of Rostov (Figure 1).

The installation covers approximately 135 acres, is doubly fenced, and contains a probable administration building, a barracks/administration building, 3 probable barracks, 2 possible vehicle maintenance buildings, 27 storage buildings, and 13 support buildings (Figures

2 and 3).

The military significance of this installation is undetermined.

The area is covered on 5 KEYHOLE missions between June 1962 and December 1964. Comparative analysis reveals no change in facilities and light activity throughout this period.

DESCRIPTION OF INSTALLATION

Railroad Service

A spur of the Rostov main rail line divides into 4 sidings within the storage area.

Road Service

An all-weather road provides access to Rostov.

Administration and Troop Housing Area

Area D contains a barracks/administration building and 3 multistory probable barracks.

General Storage Area

Area E contains 27 storage buildings.

POL Storage Areas

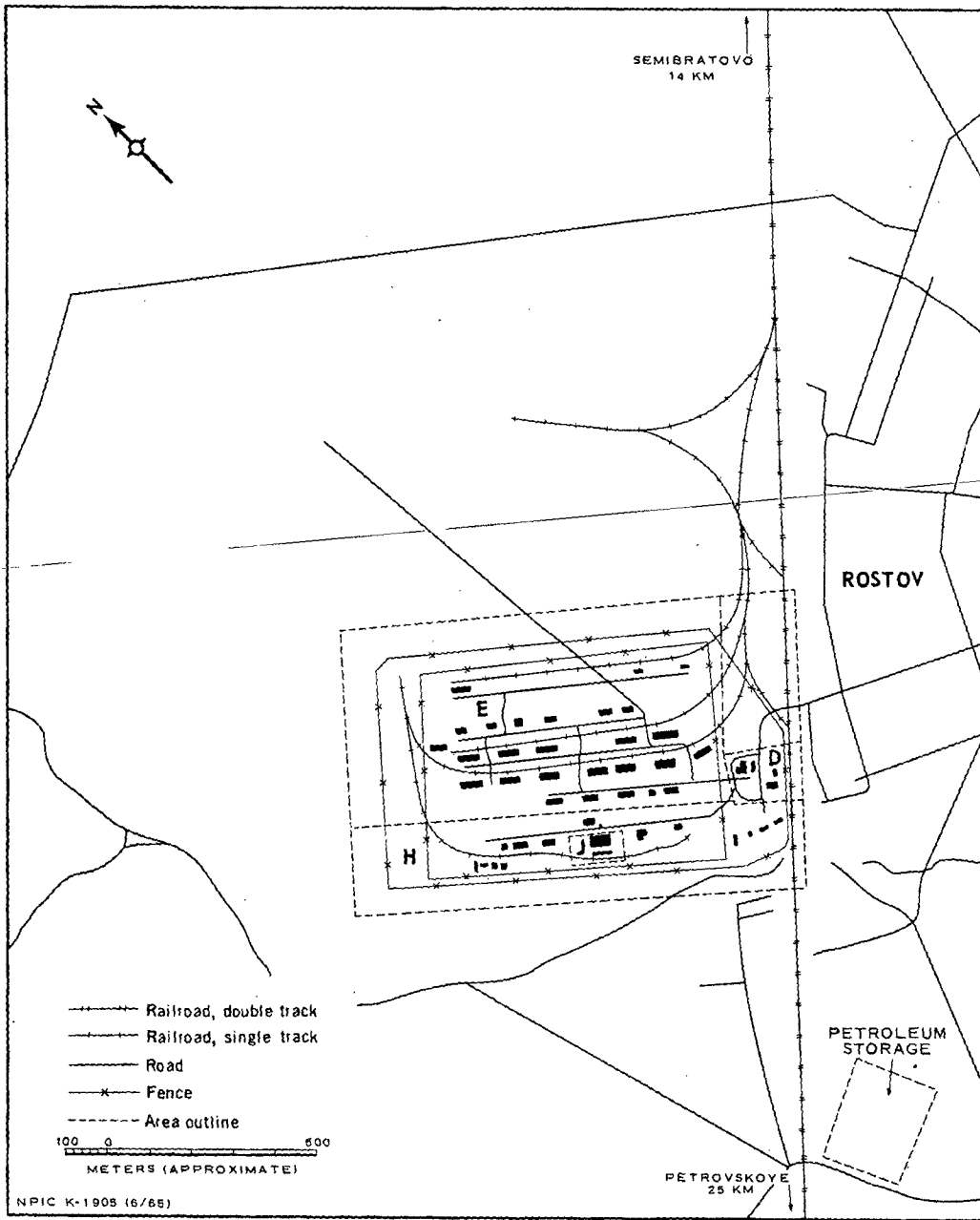
Rostov Petroleum Storage at 57-11N 039-24E [] contains 8 medium and 3 small POL storage tanks.

Other Buildings

Area H contains 13 support buildings and an L-shaped probable administration building.

Equipment Storage/Maintenance Area

Area J contains 2 possible maintenance buildings, 200 by 125 feet and 200 by 50 feet.



NPIC K-1905 (6/65)

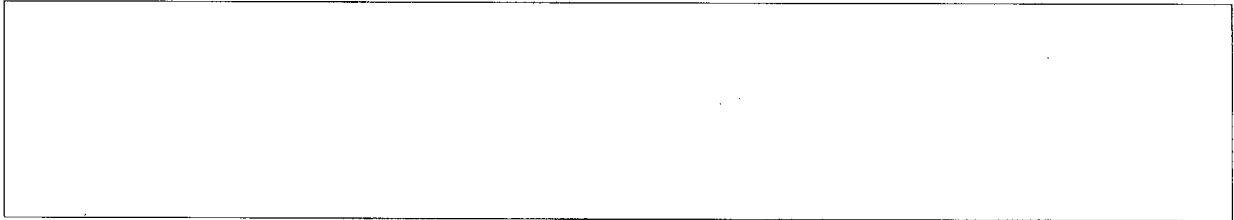
FIGURE 3. STORAGE AREA, ROSTOV. Sketch compiled from [redacted] June 1964.

Handle Via
TALENT-KEYHOLE
Control System Only

TCS-80724/65

REFERENCES

PHOTOGRAPHY



MAPS OR CHARTS

US Air Target Chart, Series 200, Sheet 0154-18HL, 2d ed, Jun 64 (SECRET)

REQUIREMENT

C-RR4-81,733 (partial answer)

NPIC PROJECT

11709/64

Handle Via
TALENT-KEYHOLE
Control System Only

~~TOP SECRET~~

~~TOP SECRET~~