



PHOTOGRAPHIC INTERPRETATION REPORT

APPROVED FOR  
RELEASE - HISTORICAL  
COLLECTION DIVISION  
DATE: 06-18-2012

# SOVIET MILITARY ORDER OF BATTLE MOSCOW MD



CIA



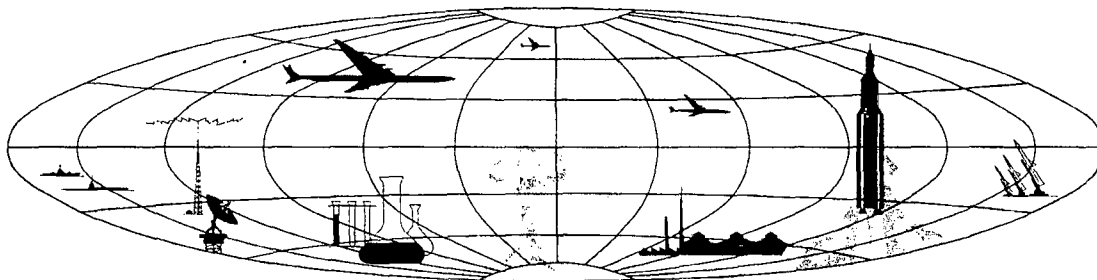
DIA

Handle Via **TALENT - KEYHOLE** Control Only

WARNING

This document contains classified information affecting the national security of the United States within the meaning of the espionage laws U. S. Code Title 18, Sections 793 and 794. The law prohibits its transmission or the revelation of its contents in any manner to an unauthorized person, as well as its use in any manner prejudicial to the safety or interest of the United States or for the benefit of any foreign government to the detriment of the United States. It is to be seen only by personnel especially indoctrinated and authorized to receive TALENT-KEYHOLE information. Its security must be maintained in accordance with KEYHOLE and TALENT regulations.

NATIONAL PHOTOGRAPHIC INTERPRETATION CENTER



TOP SECRET

GROUP 1  
Excluded from automatic  
downgrading and declassification

~~TOP SECRET RUFF~~

TCS-80770/65

## PREFACE

This report is one in a series on Soviet Ground Force and Logistic installations being prepared for a DIA/CIA Panel. The series is being coordinated, published and disseminated by NPIC. The photographic analysis is being performed by the NPIC Photographic Analysis Group, the CIA Photographic Intelligence Division (NPIC), and the Production Center 1P1a (DIA). The photographic analysis for this particular report was performed by the NPIC Photographic Analysis Group.

In the interest of uniformity, the titles and letter designators for the facilities observed at these installations are identical with those appearing in the project requirement. When a specific facility is not observed both its title and letter designator are omitted in the report.

Titles and letter designators for the various facilities are as follows: (A) railroad service, (B) road service, (C) landing strips, (D) administrative and troop housing areas, (E) storage areas, (F) ammunition storage areas, (G) POL storage areas, (H) other buildings and facilities, (J) equipment storage/maintenance areas, (K) athletic fields, (L) small-arms firing ranges, (M) driver training areas, (N) tank/assault gun firing ranges, (P) flat trajectory firing ranges, (Q) artillery emplacements (batteries), (R) infantry or combined arms field training area or courses, (S) special training facilities, (T) unidentified facilities or tracking activity.

~~TOP SECRET RUFF~~

YAROSLAVL ARMY DEPOT

(57-39N 039-55E)

YAROSLAVL, YAROSLAVSKAYA OBLAST, USSR

MOSCOW MD

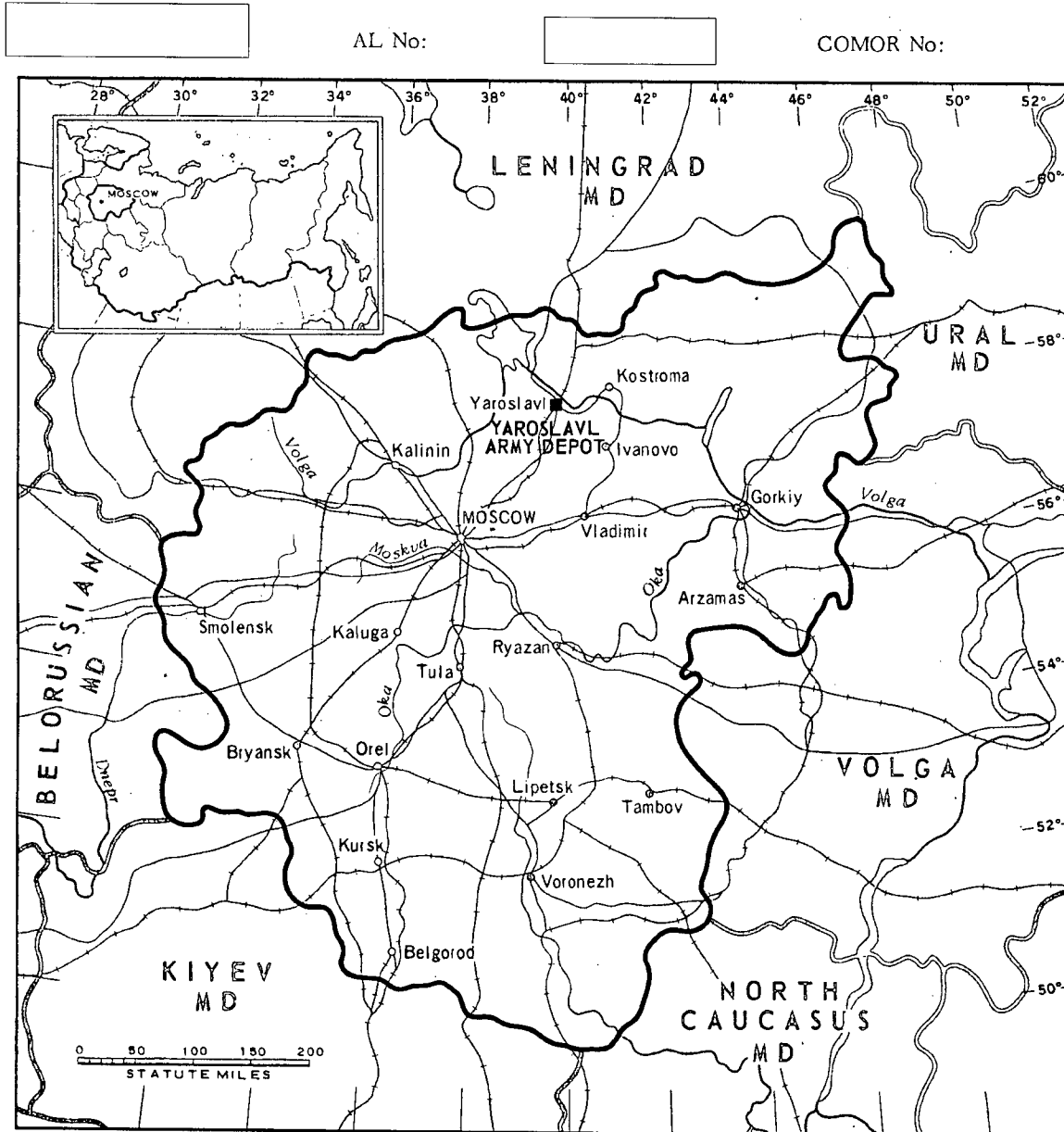


FIGURE 1. LOCATION OF YAROSLAVL ARMY DEPOT.

NPIC K-2082 (6/65)

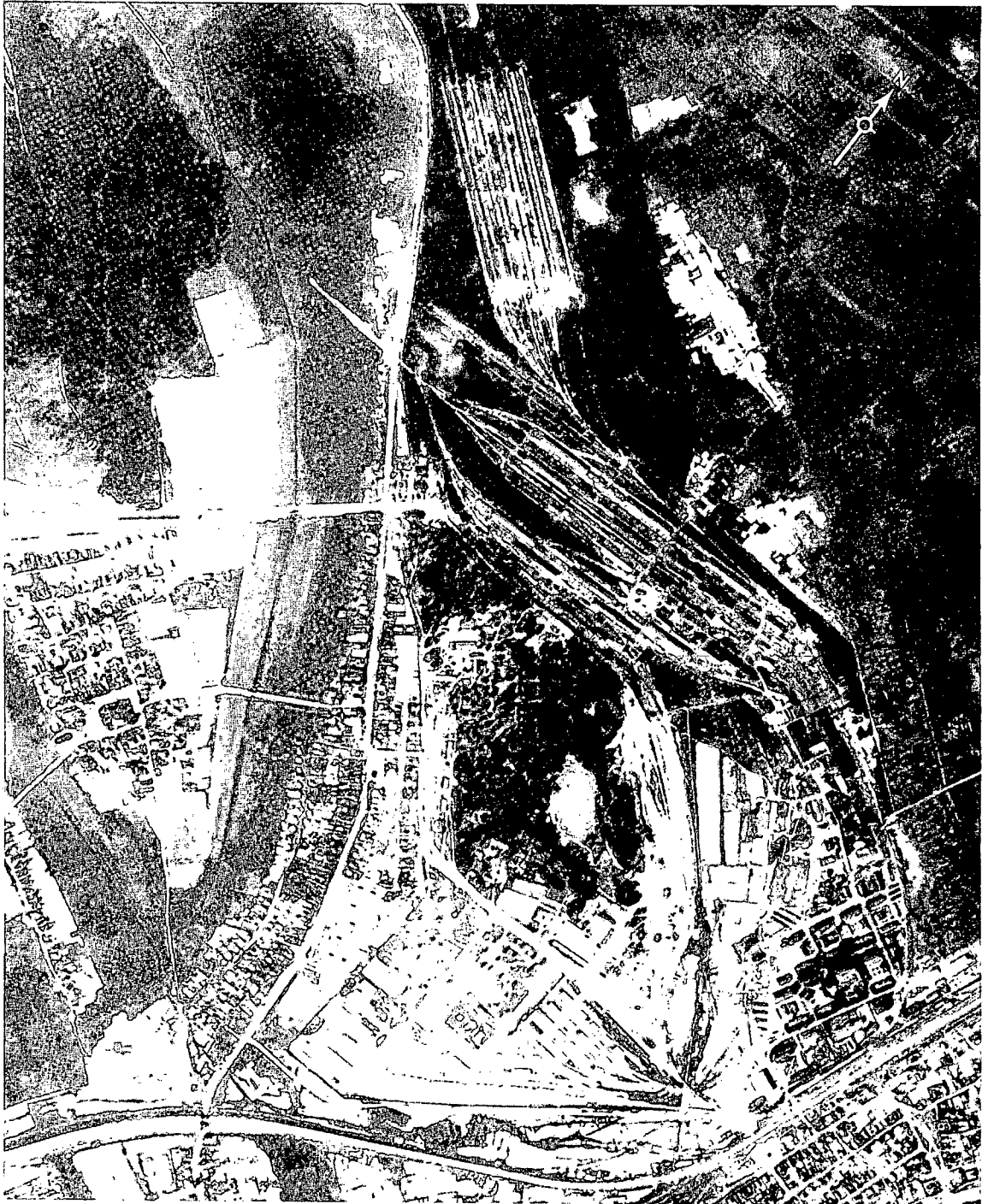


FIGURE 2. YAROSLAVL ARMY DEPOT, YAROSLAVL, USSR, JUNE 1964.

NPIC K-2093 (6/65)

SUMMARY

Yaroslavl Army Depot is located on the northeast edge of Yaroslavl (Figure 1).

The installation covers approximately 700 acres and contains 3 administration buildings, 26 possible barracks, 7 quarters, 47 storage buildings, 38 support buildings, 3 vehicle maintenance buildings, an athletic field, and a pos-

sible bivouac area (Figures 2 and 3).

This installation was covered by 7 KEYHOLE missions between December 1961 and December 1964 and appeared moderately active. Twelve storage buildings, 3 possible quarters, and 1 support building were added between April 1962 and June 1964.

DESCRIPTION OF INSTALLATION

Railroad Service

Two spurs of the Yaroslavl-Danilov rail line form multiple sidings in the installation.

Road Service

The installation is served by Yaroslavl streets.

Administration and Troop Housing Areas

Area D1 contains 1 administration building, 19 possible barracks, and 14 support buildings.

Area D2 contains 1 administration building, 7 possible barracks, and 2 support buildings.

Area D3 contains 7 quarters, 3 of which were added between April 1962 and June 1964.

Area D4, a possible bivouac area, contains 3 support buildings.

General Storage Areas

Area E1 contains 2 storage buildings.

Area E2 contains 11 storage buildings (6 added between April 1962 and June 1964), and 4 support buildings.

Area E3 contains 26 storage buildings.

Area E4 contains 8 storage and 1 support building. Six storage buildings and 1 support building were added between April 1962 and June 1964.

POL Storage Area

A POL storage area at 57-40N 039-52E contains 5 large POL storage tanks. A second area at 57-39N 039-51E contains 2 large, 2 medium, and 6 small POL storage tanks. A third area at 57-34N 039-52E contains 55 medium POL storage tanks. A fourth area at 57-33N 039-52E contains 50 medium and 4 small POL storage tanks.

Other Buildings

Area H1 contains 4 support buildings.

Area H2 contains 2 support buildings.

Equipment Storage/Maintenance Areas

Area J1 contains 1 irregular-shaped monitor-roofed vehicle maintenance building (500 by 100 feet, 250 by 65 feet and 140 by 80 feet), an administration building and 4 support buildings.

Area J2 contains 12 vehicle maintenance buildings (each 100 by 35 feet) and 4 support buildings.

Athletic Field

Area K is an athletic field.

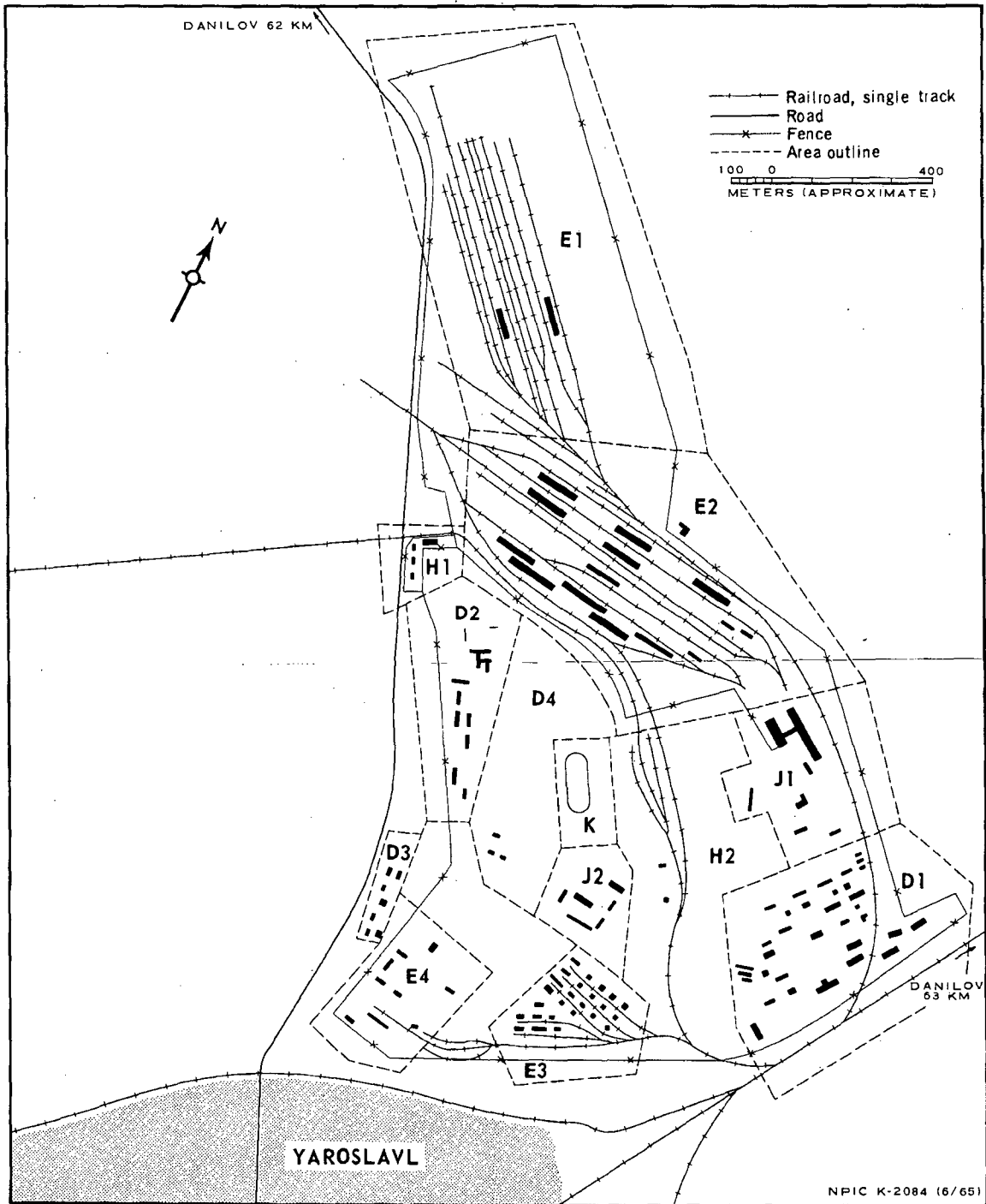


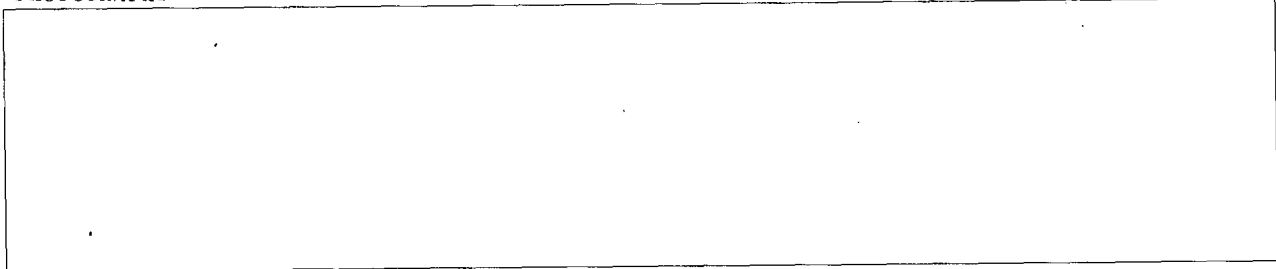
FIGURE 3. YAROSLAVL ARMY DEPOT. Sketch compiled from [redacted] June 1964.

Handle Via  
TALENT-KEYHOLE  
Control System Only

TCS-80770/65

REFERENCES

PHOTOGRAPHY



MAPS OR CHARTS

US Air Target Chart, Series 200, Sheet 0154-14HL, 3d ed, Apr 63 (SECRET)



CIA. 85976.1 *Town Plan, Yaroslavl*, Feb 62 (SECRET)

DOCUMENT



REQUIREMENT

C-RR4-81,733 (partial answer)

NPIC PROJECT

11709/64