



PHOTOGRAPHIC INTERPRETATION REPORT

SOVIET MILITARY ORDER OF BATTLE

MOSCOW MD

APPROVED FOR RELEASE -
HISTORICAL COLLECTION
DIVISION HR70-14 DATE:
07-18-2012



CIA



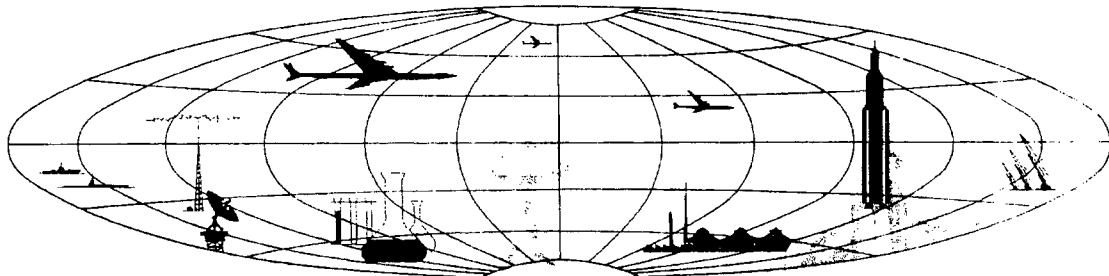
DIA

Handle Via **TALENT - KEYHOLE** Control Only

WARNING

This document contains classified information affecting the national security of the United States within the meaning of the espionage laws U. S. Code Title 18, Sections 793 and 794. The law prohibits its transmission or the revelation of its contents in any manner to an unauthorized person, as well as its use in any manner prejudicial to the safety or interest of the United States or for the benefit of any foreign government to the detriment of the United States. It is to be seen only by personnel especially indoctrinated and authorized to receive TALENT-KEYHOLE information. Its security must be maintained in accordance with KEYHOLE and TALENT regulations.

NATIONAL PHOTOGRAPHIC INTERPRETATION CENTER



~~TOP SECRET~~

GROUP 1
Excluded from automatic
downgrading and declassification

PREFACE

This report is one in a series on Soviet Ground Force and Logistic installations being prepared for a DIA/CIA Panel. The series is being coordinated, published and disseminated by NPIC. The photographic analysis is being performed by the NPIC Photographic Analysis Group, the CIA Photographic Intelligence Division (NPIC), and the Production Center 1P1a (DIA). The photographic analysis for this particular report was performed by the NPIC Photographic Analysis Group.

In the interest of uniformity, the titles and letter designators for the facilities observed at these installations are identical with those appearing in the project requirement. When a specific facility is not observed both its title and letter designator are omitted in the report.

Titles and letter designators for the various facilities are as follows: (A) railroad service, (B) road service, (C) landing strips, (D) administrative and troop housing areas, (E) storage areas, (F) ammunition storage areas, (G) POL storage areas, (H) other buildings and facilities, (J) equipment storage/maintenance areas, (K) athletic fields, (L) small arms firing ranges, (M) driver training areas, (N) tank/assault gun firing ranges, (P) flat trajectory firing ranges, (Q) artillery emplacements (batteries), (R) infantry or combined arms field training area or courses, (S) special training facilities, (T) unidentified facilities or tracking activity.

BARRACKS AREA
(56-43N 038-48E)
PERESLAVL-ZALESSKIY, YAROSLAVSKAYA OBLAST, USSR
MOSCOW MD

BE No:

AL No:

COMOR No:

HR70-14

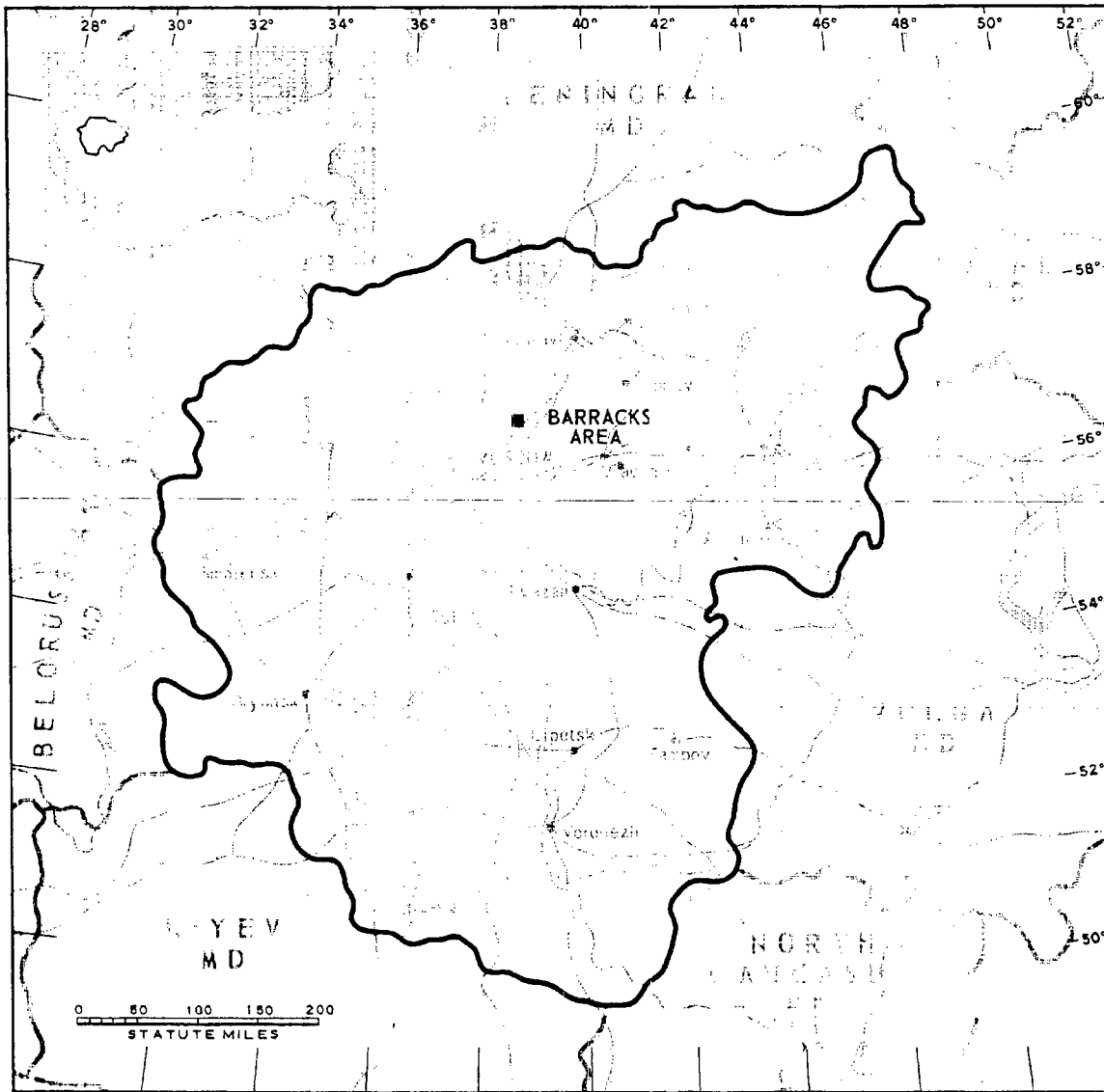


FIGURE 1. LOCATION OF BARRACKS AREA.

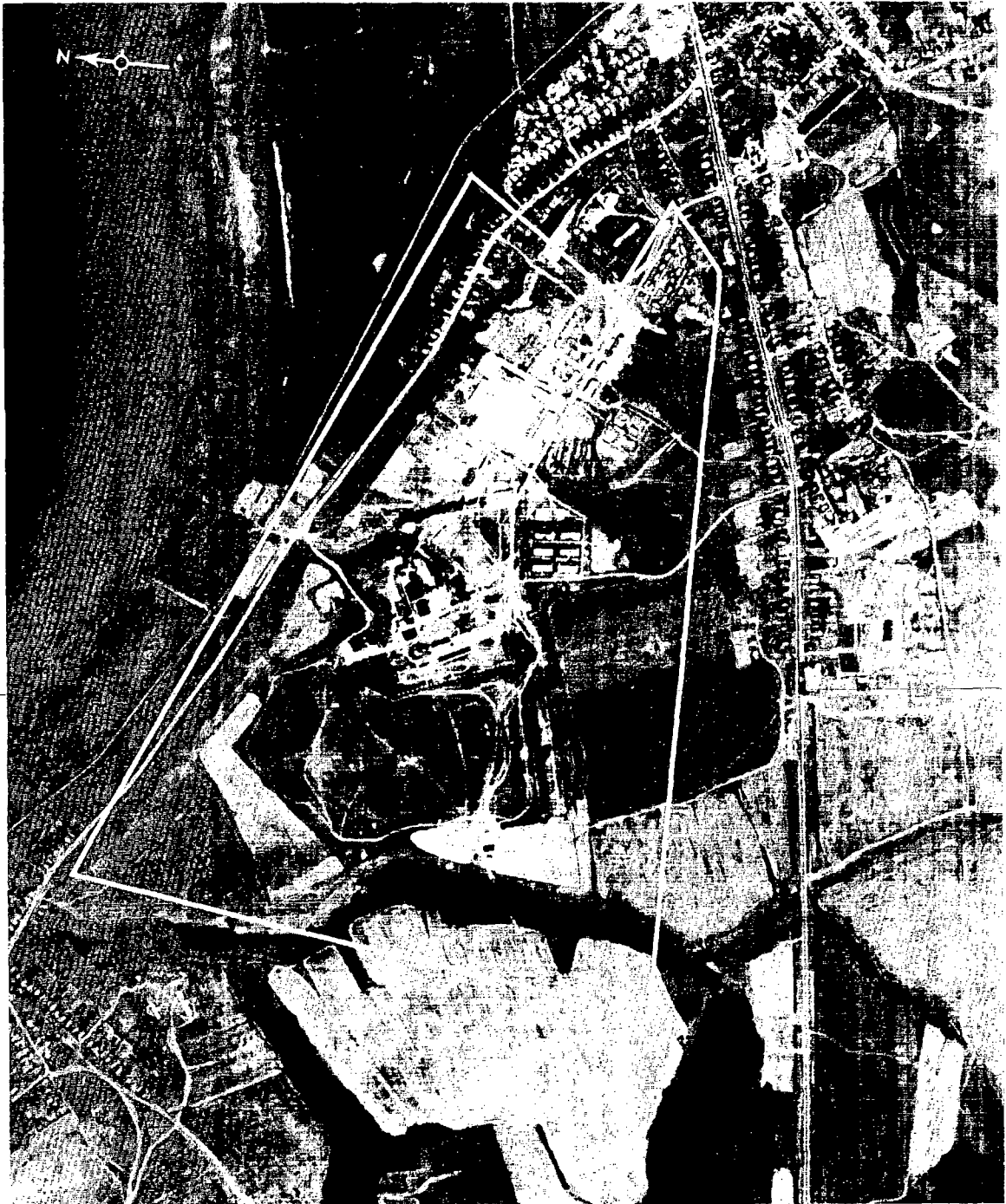


FIGURE 2. BARRACKS AREA, PERESLAVL-ZALESSKIY, USSR, JUNE 1964.

SUMMARY

A barracks area is located on the southwestern edge of Pereslavl-Zalesskiy, immediately south of Lake Pleshchyevo (Figure 1).

The installation covers approximately 310 acres and contains a barracks/administration building, 9 barracks, 19 quarters, 12 storage buildings, 28 support buildings, 3 vehicle maintenance buildings, an athletic field, 3 small-

arms firing ranges, and a possible wheeled-vehicle driver-training area (Figures 2 and 3).

This area is covered on 9 KEYHOLE missions between July 1961 and December 1964. Comparative analysis reveals no change in facilities and a high level of activity throughout this period.

DESCRIPTION OF INSTALLATION

Road Service

All-weather roads provide access to Pereslavl-Zalesskiy.

Aircraft Landing Strip

A sod landing area formerly located within the barracks area has been abandoned. The site now appears to be used by ground force units.

Administration and Troop Housing Areas

Area D1 contains a U-shaped barracks/administration building, 4 multistory barracks, and a support building.

Area D2 contains 5 multistory barracks and 5 support buildings.

Area D3 contains 19 quarters.

General Storage Areas

Area E1 contains 6 secured storage buildings and a support building.

Area E2 contains 6 secured storage buildings.

Other Buildings

Area H1 contains 7 support buildings.

Area H2 contains 5 support buildings.

Area H3 contains 6 support buildings.

Area H4 contains 3 support buildings.

Equipment Storage/Maintenance Area

Area J contains 3 maintenance buildings, measuring 380 by 50 feet, 100 by 20 feet, and 155 by 40 feet.

Athletic Field

Area K is an athletic field.

Small-Arms Firing Ranges

Areas L1, L2, and L3 contain small-arms firing ranges, measuring 600 by 80 feet, 1,000 by 100 feet, and 100 by 70 feet, respectively.

Driver-Training Area

Area M is a possible wheeled-vehicle driver-training area. This area appears to be active.

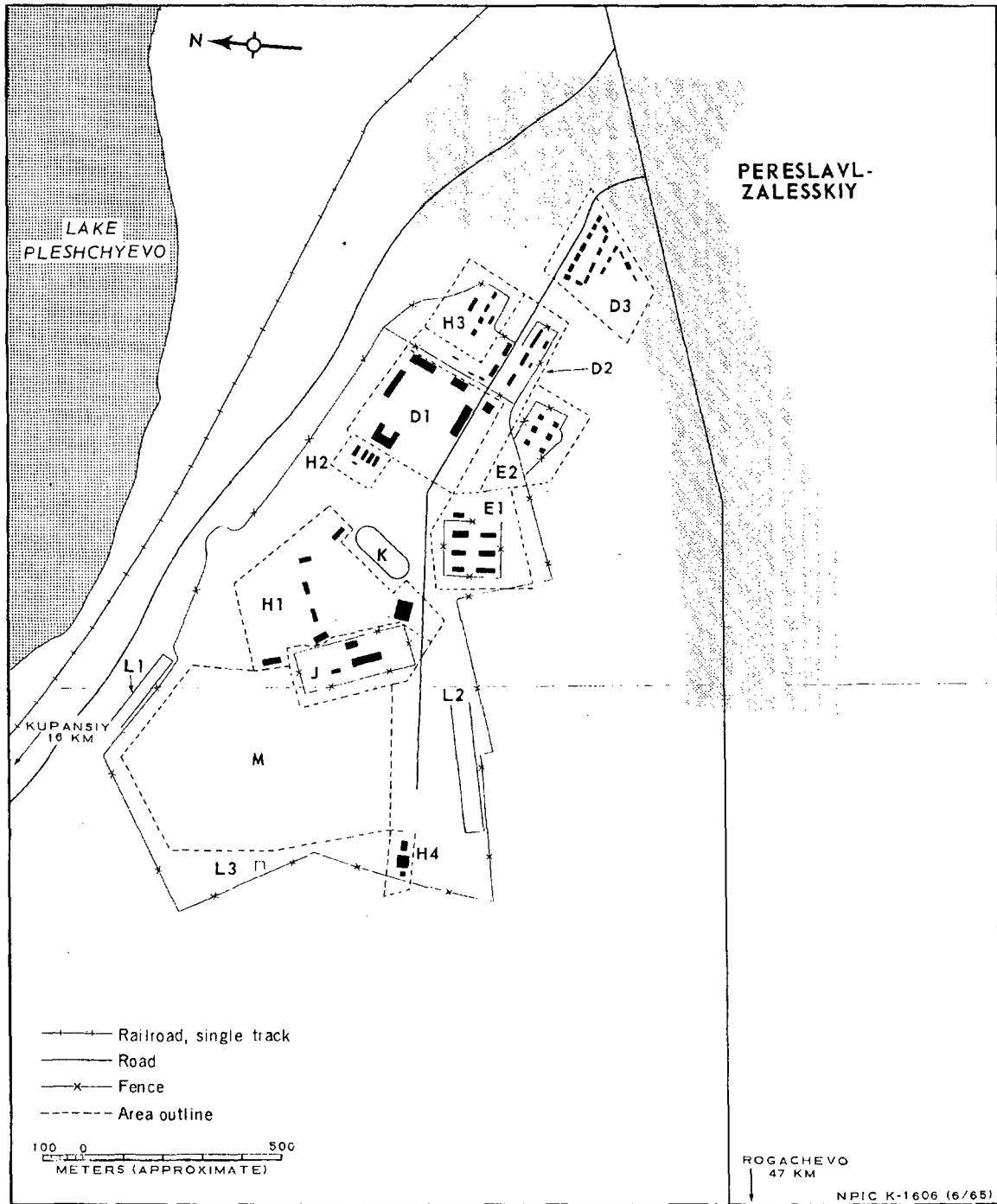
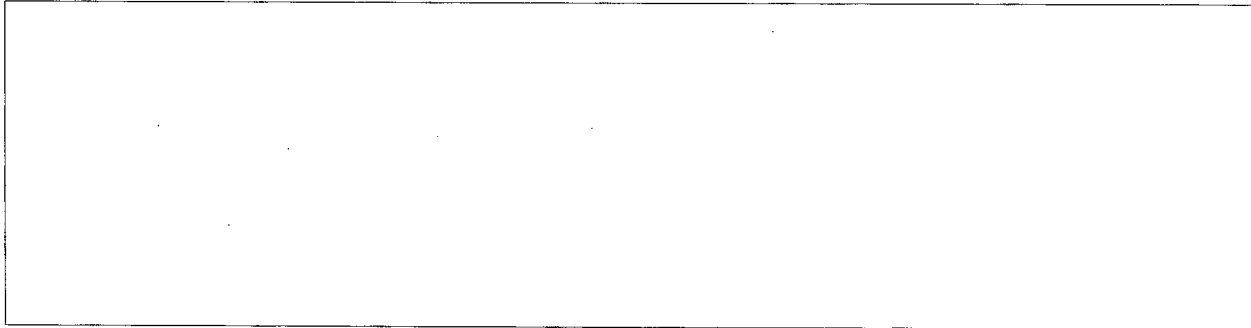


FIGURE 3. BARRACKS AREA, PERESLAVL-ZALESKIY. Sketch compiled from [redacted] December 1964.

REFERENCES

PHOTOGRAPHY



MAPS OR CHARTS

US Air Target Chart, Series 200, Sheet 0154-23HL, 2d ed, Apr 63 (SECRET)



DOCUMENT



REQUIREMENT

C-RR4-81,733 (partial answer)

NPIC PROJECT

11709/64

~~TOP SECRET~~

~~TOP SECRET~~