



PHOTOGRAPHIC INTERPRETATION REPORT

SOVIET MILITARY ORDER OF BATTLE BALTIC MD

APPROVED FOR
RELEASE
Historical Collection
Division
HR70-14
DATE: 04-27-2012



CIA



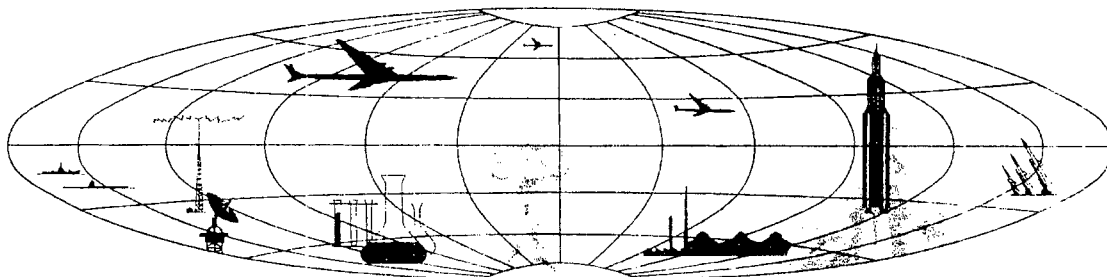
DIA

Handle Via **TALENT - KEYHOLE** Control Only

WARNING

This document contains classified information affecting the national security of the United States within the meaning of the espionage laws U. S. Code Title 18, Sections 793 and 794. The law prohibits its transmission or the revelation of its contents in any manner to an unauthorized person, as well as its use in any manner prejudicial to the safety or interest of the United States or for the benefit of any foreign government to the detriment of the United States. It is to be seen only by personnel especially indoctrinated and authorized to receive TALENT-KEYHOLE information. Its security must be maintained in accordance with KEYHOLE and TALENT regulations.

NATIONAL PHOTOGRAPHIC INTERPRETATION CENTER



~~TOP SECRET~~

GROUP 1
Excluded from automatic
downgrading and
declassification

PREFACE

This report is one in a series on Soviet Ground Force and Logistic installations being prepared for a DIA/CIA Panel. The series is being coordinated, published and disseminated by NPIC. The photographic analysis is being performed by the NPIC Photographic Analysis Group, the CIA Photographic Intelligence Division (NPIC), and the Production Center 1P1a (DIA). The photographic analysis for this particular report was performed by the Production Center 1P1a.

In the interest of uniformity, the titles and letter designators for the facilities observed at these installations are identical with those appearing in the project requirement. When a specific facility is not observed both its title and letter designator are omitted in the report.

Titles and letter designators for the various facilities are as follows: (A) railroad service, (B) road service, (C) landing strips, (D) administrative and troop housing areas, (E) storage areas, (F) ammunition storage areas, (G) POL storage areas, (H) other buildings and facilities, (J) equipment storage/maintenance areas, (K) athletic fields, (L) small arms firing ranges, (M) driver training areas, (N) tank/assault gun firing ranges, (P) flat trajectory firing ranges, (Q) artillery emplacements (batteries), (R) infantry or combined arms field training areas or courses, (S) special training facilities, (T) unidentified facilities or tracking activity.

Handle Via
TALENT-KEYHOLE
Control System Only

TCS-80431/65

LIEPAJA BARRACKS NORTH AND
LIEPAJA TRAINING AREA NORTH
(56-35N 021-01E)
LIEPAJA, LATVIYSKAYA SSR, USSR
BALTIC MD

BE No: See Summary

AL No:

COMOR No:

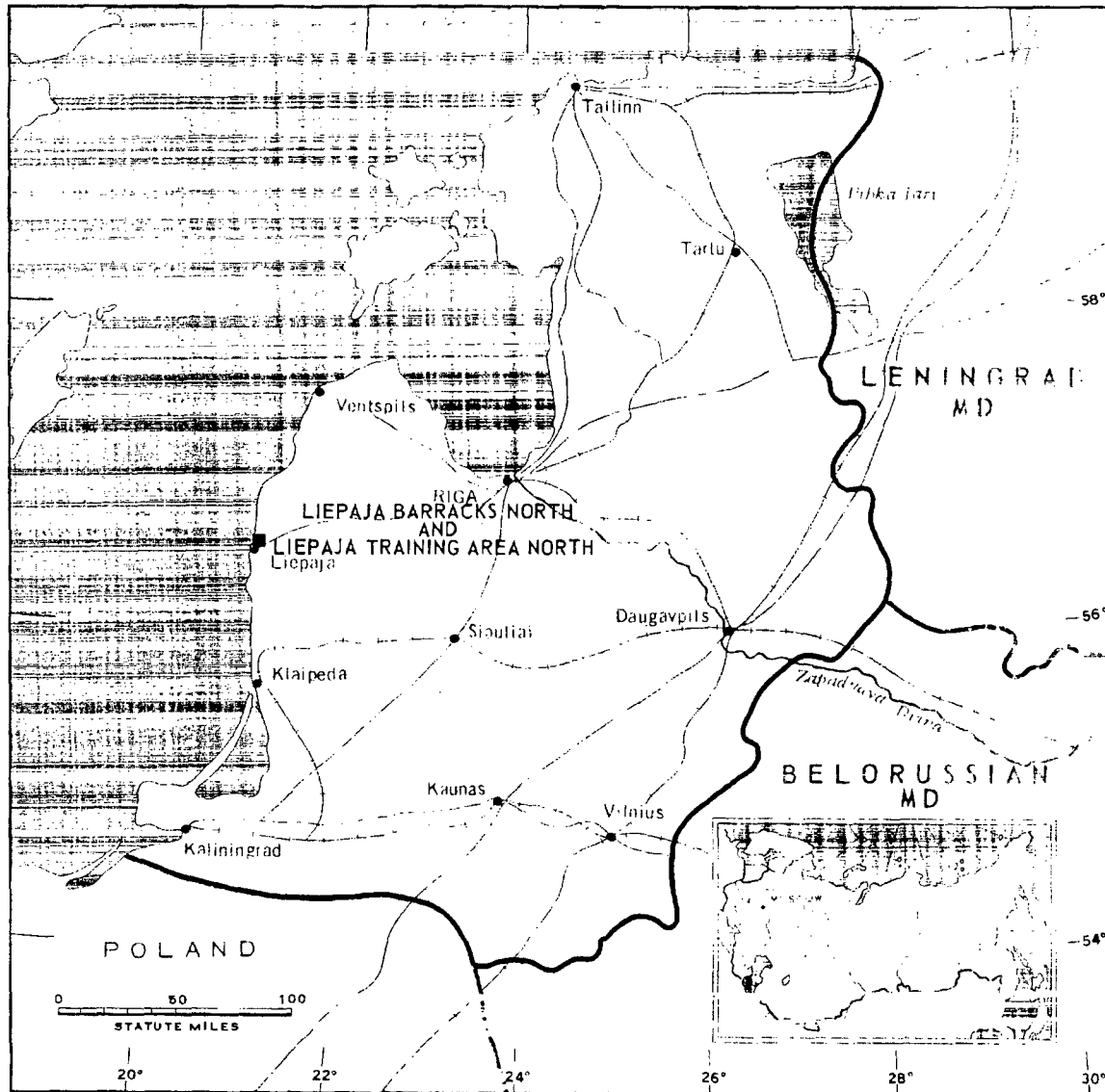


FIGURE 1. LOCATION OF LIEPAJA BARRACKS NORTH AND LIEPAJA TRAINING AREA NORTH.

NPIC J-9187 (3/65)

Handle Via
TALENT-KEYHOLE
Control System Only

SUMMARY

Liepaja Barracks North (BEN [redacted])
COMOR No [redacted] is located 6 kilometers
(km) north of Liepaja (Figure 1). Liepaja
Training Area North (BE No [redacted]) is
adjacent to Liepaja Barracks North.

Liepaja Barracks North covers 590 acres,
and Liepaja Training Area North covers approxi-
mately 740 acres. The barracks area contains
7 multistory barracks, 6 other barracks, 5
quarters, 29 multistory barracks/administra-
tion buildings, and 35 support/storage build-
ings. The training area contains only a tank/

assault-gun firing range (Figures 2 and 3).

The barracks installation and training area
were covered on TALENT photography of July
1956 and on interpretable photography from [redacted]
KEYHOLE missions between September 1961 and
September 1964. The barracks/administration
buildings were under construction on the 1956
coverage. By 1961 all construction had been
completed, the barracks area had reached its
present size, and the tank/assault-gun firing
range had been extended to its present size.

DESCRIPTION OF INSTALLATION

Railroad Service

A single-track rail line with 2 spurs serves
Liepaja Barracks North from the Liepaja main
line. This track terminates north of the instal-
lation at an abandoned rail facility formerly
used for coastal defense. The rail lines within
the barracks and training areas are all
abandoned.

Road Service

The installations are served by city streets.

Aircraft Landing Strip

Liepaja Airfield is located 9 km southeast.

Administration and Troop Housing Area

Area D contains 5 quarters, 7 multistory

barracks, 6 other barracks, 29 multistory bar-
racks/administration buildings, and 30 support/
storage buildings.

General Storage Area

Area E contains 5 storage/support buildings
and probable open storage.

Ammunition Storage Area

Area F contains 2 underground storage
facilities, each 280 by 200 feet. These are
probably associated with the abandoned coastal
defenses in this area.

Tank/Assault-Gun Firing Range

Area N contains 2 firing ranges, each
approximately 1,470 feet long, with 6 targets.

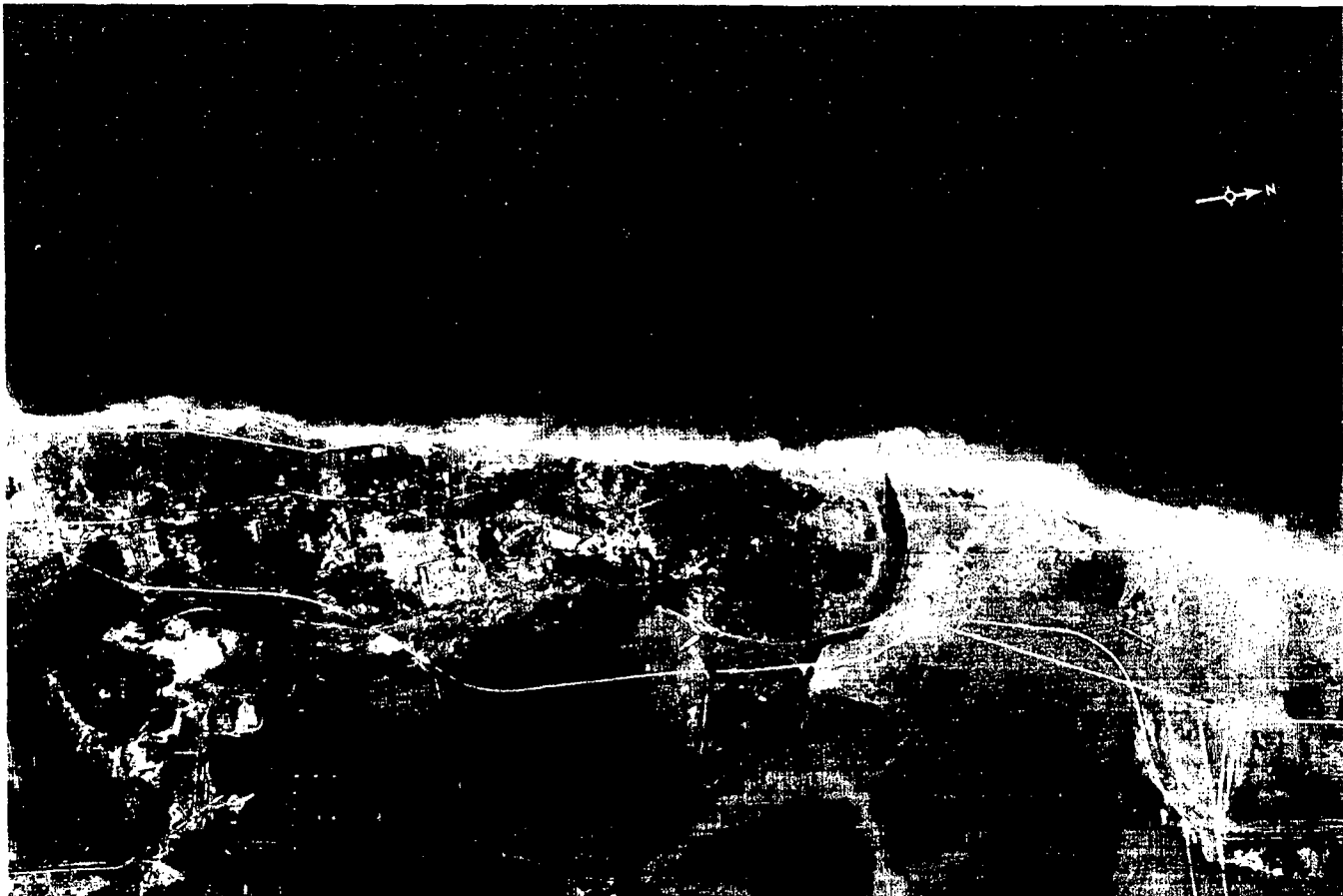


FIGURE 2. LIEPAJA BARRACKS NORTH AND LIEPAJA TRAINING AREA NORTH, LIEPAJA, USSR, SEPTEMBER 1964.

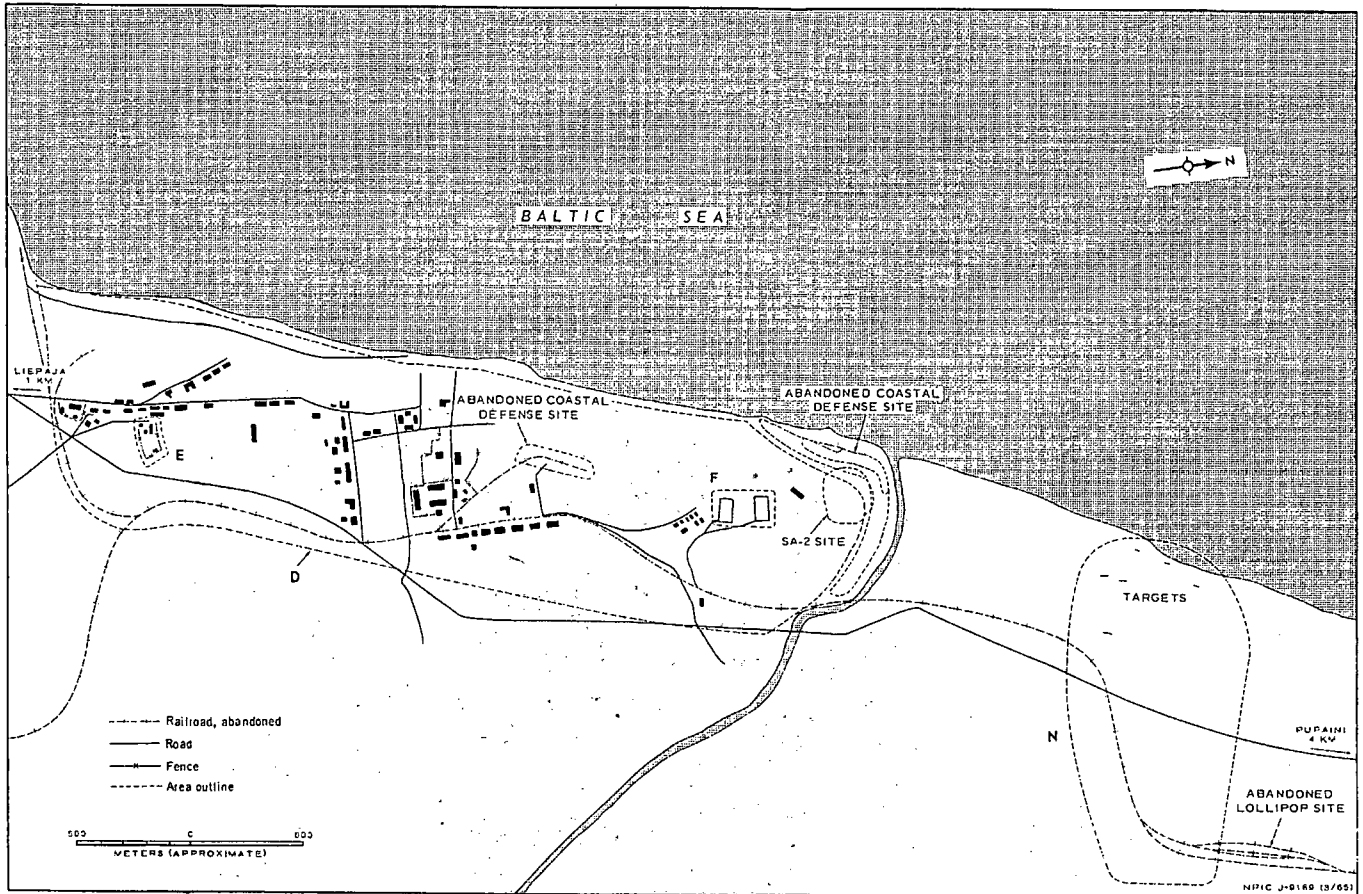
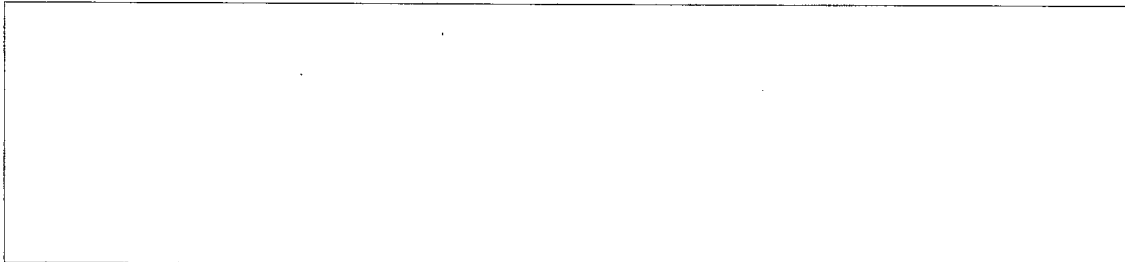


FIGURE 3. LIEPAJA BARRACKS NORTH AND LIEPAJA TRAINING AREA NORTH. Sketch compiled from [] September 1964.

REFERENCES



MAPS OR CHARTS

US Air Target Chart, Series 200, Sheet 0152-25H1, 5th ed, Jul 63 (SECRET)

US Air Target Chart, Series 50, Sheet 0152-25/7MA, 2d ed, Apr 62 (SECRET)

DOCUMENT

Army. PIB-TK-76-62, *Military Installations, Liepaja, Latvia*, Jul 62 (TOP SECRET RUFF)

REQUIREMENT

DIAAP-1-15-64 (partial answer)

NPIC PROJECT

11904/64

~~TOP SECRET~~

~~TOP SECRET~~