

HR70-14

~~TOP SECRET~~

Copy 108

TCS-80329/65

5 Pages

March 1965

APPROVED FOR  
RELEASE-HISTORICAL  
COLLECTION  
DIVISION-HR70-14  
DATE: 05-11-2012

~~TOP SECRET~~  
PHOTOGRAPHIC INTERPRETATION REPORT

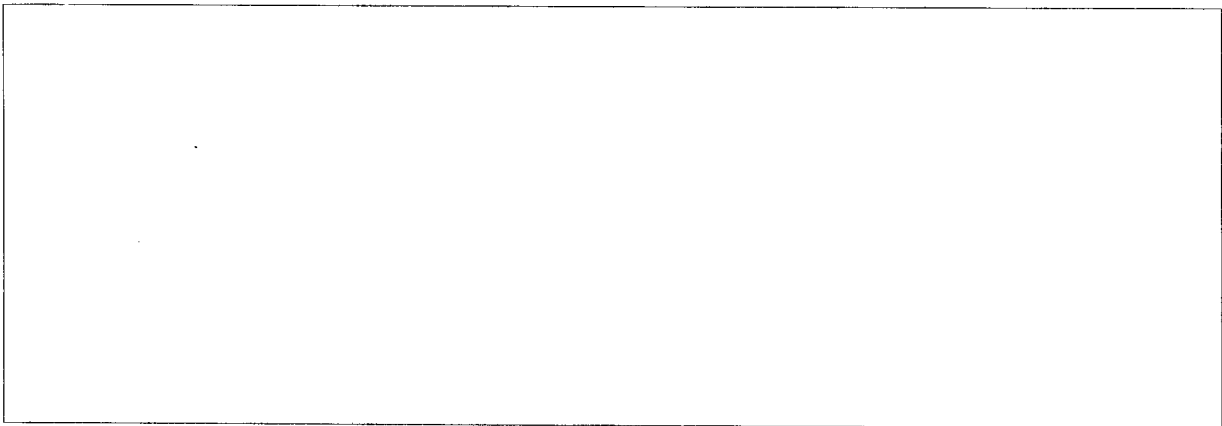
# SOVIET MILITARY ORDER OF BATTLE BALTIC MD



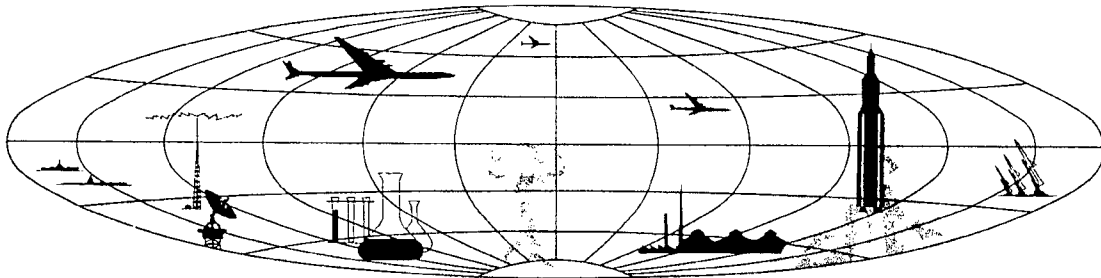
CIA



DIA



NATIONAL PHOTOGRAPHIC INTERPRETATION CENTER



~~TOP SECRET~~

GROUP 1  
Excluded from automatic  
downgrading and declassification



PREFACE

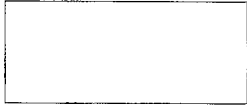
This report is one in a series on Soviet Ground Force and Logistic installations being prepared for a DIA/CIA Panel. The series is being coordinated, published and disseminated by NPIC. The photographic analysis is being performed by the NPIC Photographic Analysis Group, the CIA Photographic Intelligence Division (NPIC), and the Production Center 1P1a (DIA). The photographic analysis for this particular report was performed by the Production Center 1P1a.

In the interest of uniformity, the titles and letter designators for the facilities observed at these installations are identical with those appearing in the project requirement. When a specific facility is not observed both its title and letter designator are omitted in the report.

Titles and letter designators for the various facilities are as follows: (A) railroad service, (B) road service, (C) landing strips, (D) administrative and troop housing areas, (E) storage areas, (F) ammunition storage areas, (G) POL storage areas, (H) other buildings and facilities, (J) equipment storage/maintenance areas, (K) athletic fields, (L) small arms firing ranges, (M) driver training areas, (N) tank/assault gun firing ranges, (P) flat trajectory firing ranges, (Q) artillery emplacements (batteries), (R) infantry or combined arms field training areas or courses, (S) special training facilities, (T) unidentified facilities or tracking activity.



~~TOP SECRET CHESS RUFF~~



TRAINING AREA  
(54-31N 023-30E)  
MARIJAMPOLE, LITOVSKAYA OBLAST, USSR  
BALTIC MD

BE No:

AL No:



COMOR No:

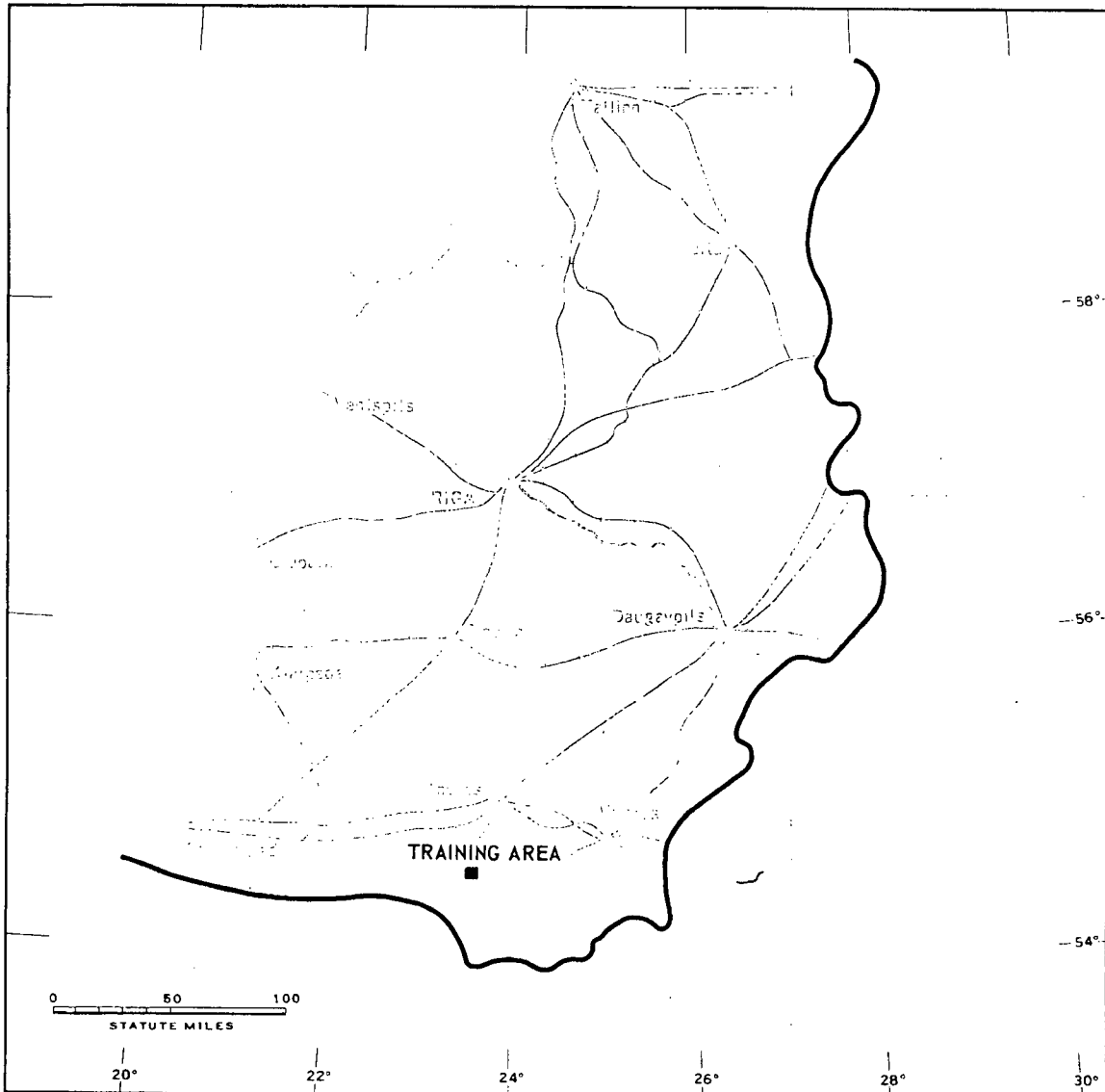
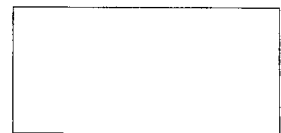


FIGURE 1. LOCATION OF TRAINING AREA.

- 2 -

~~TOP SECRET CHESS RUFF~~



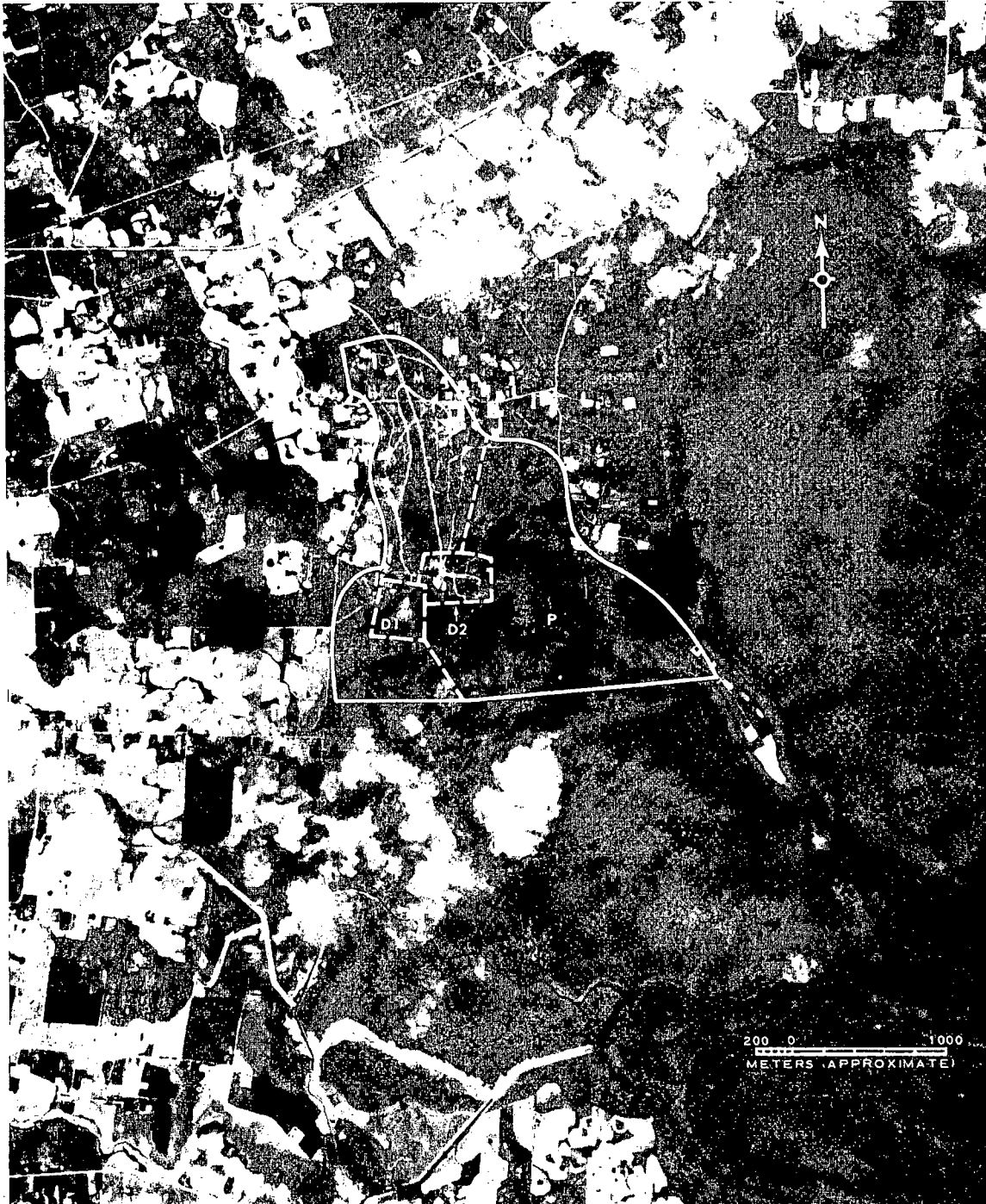
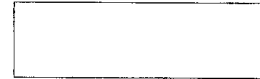



FIGURE 2. TRAINING AREA, MARIJAMPOLE, USSR, JUNE 1964.

NPIC J-8817 (3/65)



SUMMARY

A training area is situated approximately 8 kilometers (km) east of Marijampole (Figure 1). This installation is the only training area in Marijampole and probably supports the Marijampole Army Barracks 

The training area covers approximately 700 acres and contains a tent area, a support area,

a wheeled-vehicle driver-training course, and a flat-trajectory range, probably for automatic weapons mounted on wheeled vehicles (Figure 2).

Since 1956, one TALENT and 4 KEYHOLE missions have covered this area. There has been no significant change.

DESCRIPTION OF INSTALLATION

Road Service

Good all-weather roads serve the area.

Administration and Troop Housing Areas

Area D1 is a tent area with approximately 50 tents.

Area D2 is a support area with 7 support/administration buildings.

Driver-Training Area

Area M is an irregularly shaped wheeled-vehicle driver-training course.

Flat-Trajectory Firing Range

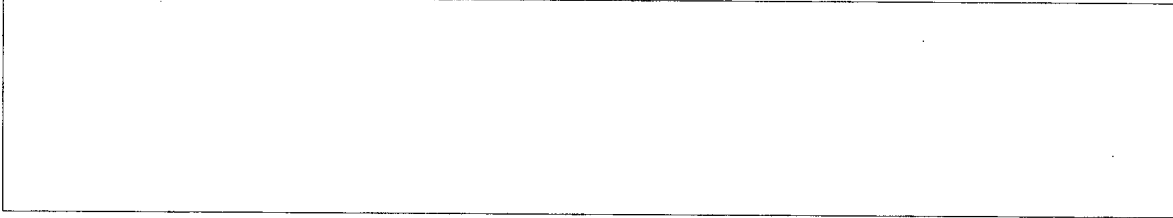
Area P is a 4,000-foot flat-trajectory firing range with 3 moving targets, probably for vehicle-mounted automatic weapons.





REFERENCES

PHOTOGRAPHY



MAPS OR CHARTS

US Air Target Chart, Series 200, Sheet 0168-7, 2d ed, Oct 62 (SECRET)

DOCUMENT

Army. DPIR-32-58, *Military Installations, Marijampole and Kalvarija, USSR*, Jun 58 (TOP SECRET CHESS)

REQUIREMENT

DIAAP-1-15-64 (partial answer)

NPIC PROJECT

11904/64



~~TOP SECRET~~

~~TOP SECRET~~