

HR70-14

~~TOP SECRET~~

Copy 100
6 Pages

[Redacted]

March 1965



APPROVED FOR
RELEASE-HISTORICAL
COLLECTION
DIVISION-HR70-14
DATE: 05-11-2012

PHOTOGRAPHIC INTERPRETATION REPORT

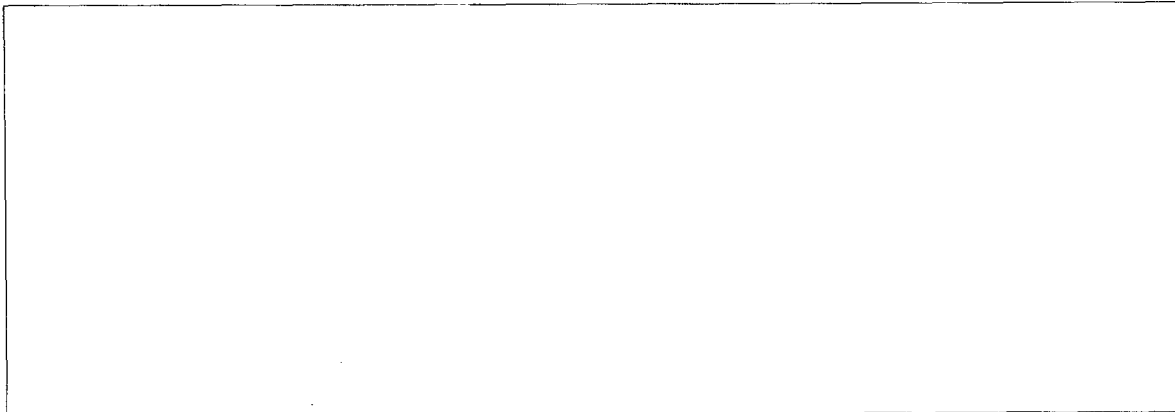
SOVIET MILITARY ORDER OF BATTLE BALTIC MD



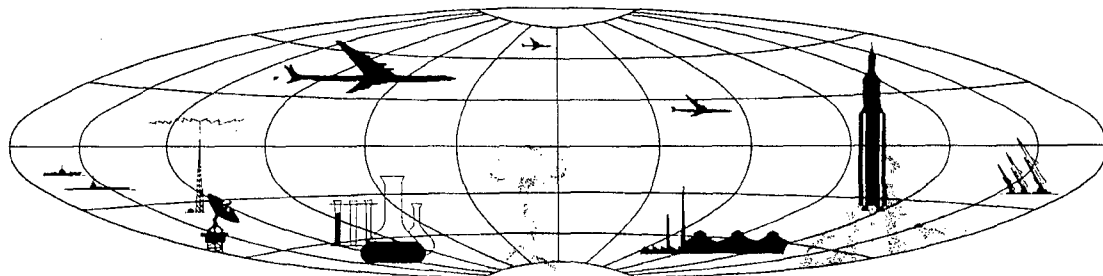
CIA



DIA



NATIONAL PHOTOGRAPHIC INTERPRETATION CENTER



~~TOP SECRET~~

GROUP 1
Excluded from automatic
downgrading and declassification

PREFACE

This report is one in a series on Soviet Ground Force and Logistic installations being prepared for a DIA/CIA Panel. The series is being coordinated, published and disseminated by NPIC. The photographic analysis is being performed by the NPIC Photographic Analysis Group, the CIA Photographic Intelligence Division (NPIC), and the Production Center 1P1a (DIA). The photographic analysis for this particular report was performed by the Production Center 1P1a.

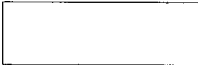
In the interest of uniformity, the titles and letter designators for the facilities observed at these installations are identical with those appearing in the project requirement. When a specific facility is not observed both its title and letter designator are omitted in the report.

Titles and letter designators for the various facilities are as follows: (A) railroad service, (B) road service, (C) landing strips, (D) administrative and troop housing areas, (E) storage areas, (F) ammunition storage areas, (G) POL storage areas, (H) other buildings and facilities, (J) equipment storage/maintenance areas, (K) athletic fields, (L) small arms firing ranges, (M) driver training areas, (N) tank/assault gun firing ranges, (P) flat trajectory firing ranges, (Q) artillery emplacements (batteries), (R) infantry or combined arms field training areas or courses, (S) special training facilities, (T) unidentified facilities or tracking activity.



PLUNGE ARMY BARRACKS
(55-55N 021-52E)
PLUNGE, LITOVSKAYA SSR, USSR
BALTIC MD

BE No:



AL No:

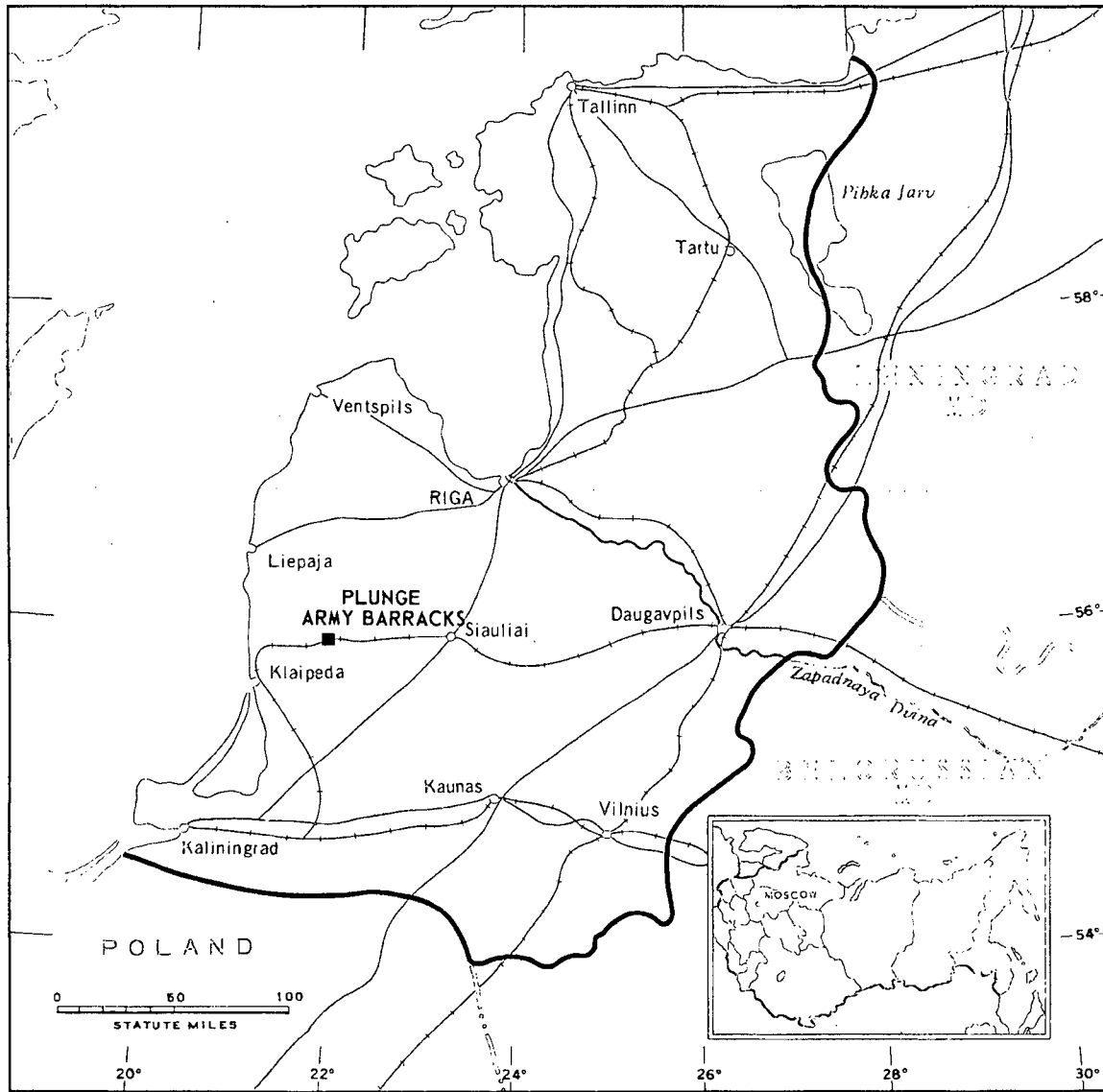
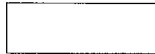


FIGURE 1. LOCATION OF PLUNGE ARMY BARRACKS.

NPIC J-8830 (3/65)



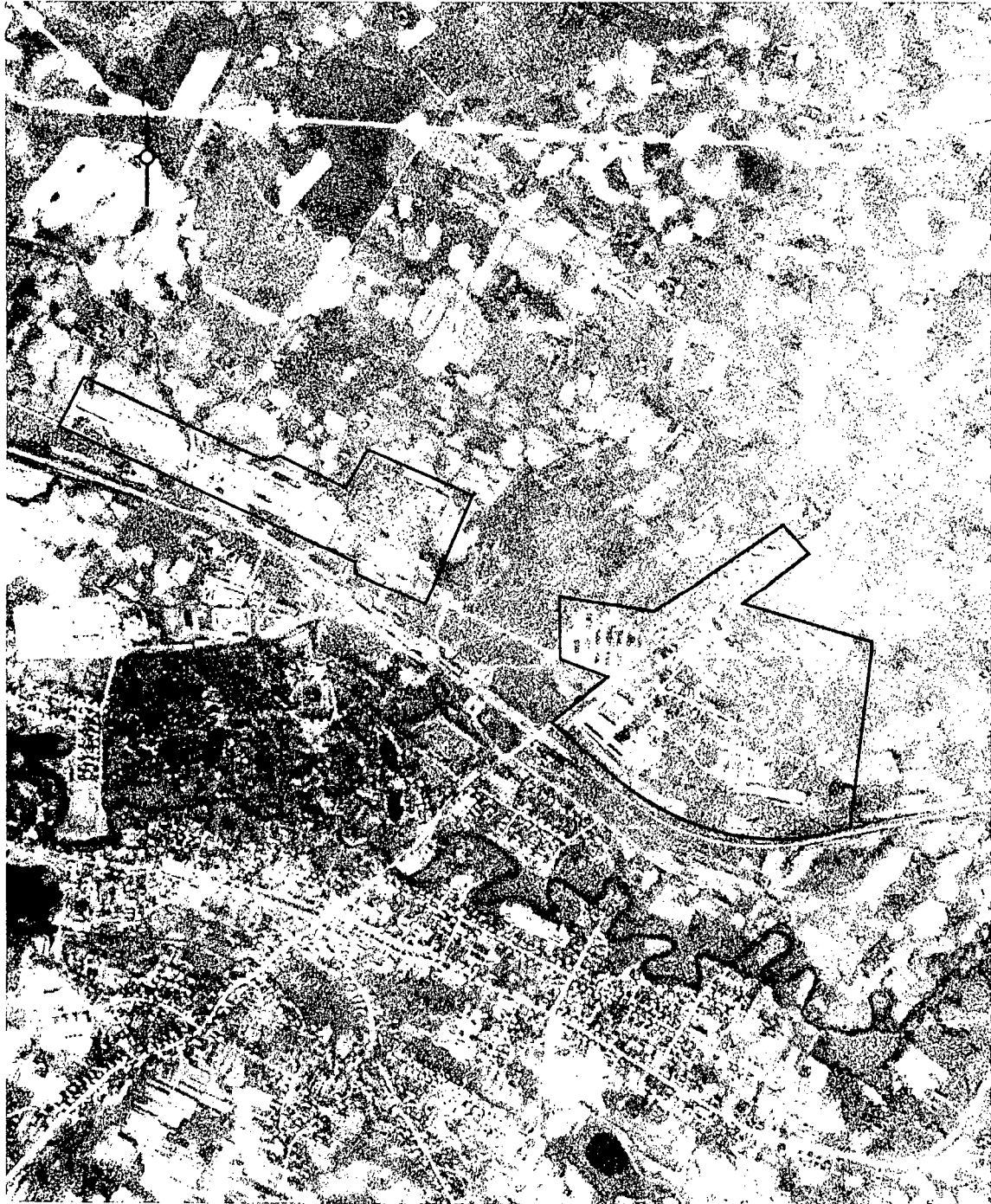


FIGURE 2. PLUNGE ARMY BARRACKS, PLUNGE, USSR, OCTOBER 1964.

NPIC J-8831 (3/65)





SUMMARY

Plunge Army Barracks is located 2 kilometers (km) northeast of Plunge (Figure 1). A secured storage area, with an adjoining trackside dock/storage section, is approximately 1 km northwest of the main barracks area.

The main barracks area covers 250 acres and the storage/receiving area covers 15 acres. Buildings within the 2 sectors include 11 barracks, 5 barracks/administration, 3 administration, 8 storage, 13 support, 6 vehicle storage/maintenance, and 3 probably missile-associated

drive-through buildings. There are also 2 trackside docks. A small-arms firing range is in the main barracks area (Figures 2 and 3).

Interpretable photography on 4 KEYHOLE missions, from June 1962 to November 1964, indicated no substantial change in level of usage or physical facilities of the main barracks or storage area. The 3 probably missile-associated buildings were under construction in June 1962, but the trackside docks were not present.

DESCRIPTION OF INSTALLATION

Railroad Service

One rail line and two 350-foot trackside docks (A) apparently serve the adjoining storage and military areas.

Road Service

The areas are served by city streets.

Administration and Troop Housing Area

Area D contains 11 multistory barracks, 5 multistory barracks/administration buildings, 3 multistory, irregularly shaped administration buildings, 1 multistory storage building, and 8 support buildings.

General Storage Areas

Area E1 contains 6 storage buildings.

Area E2 contains 1 multistory storage building, 4 support buildings, and open storage.

Other Buildings

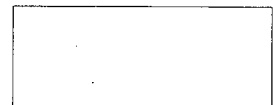
Area H contains 3 drive-through probably missile-associated buildings.

Equipment Storage/Maintenance Area

Area J contains 6 vehicle storage/maintenance buildings (one 195 by 60 feet, three 295 by 160 feet, one 330 by 60 feet, and one 250 by 60 feet) surrounded by a hardstand, and a support building.

Small-Arms Firing Range

Area L is a 600- by 120- foot small-arms firing range surrounded by an earthen wall.



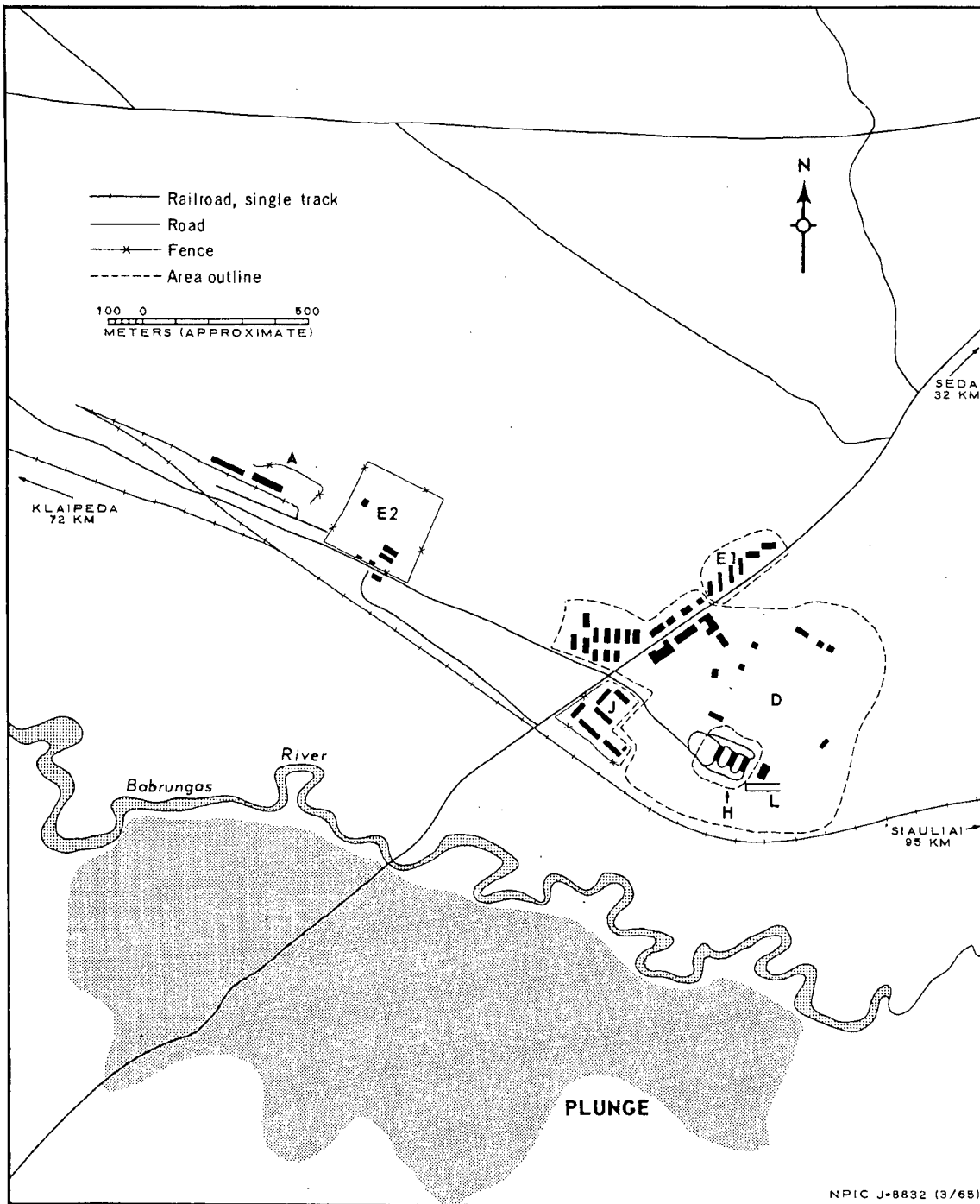
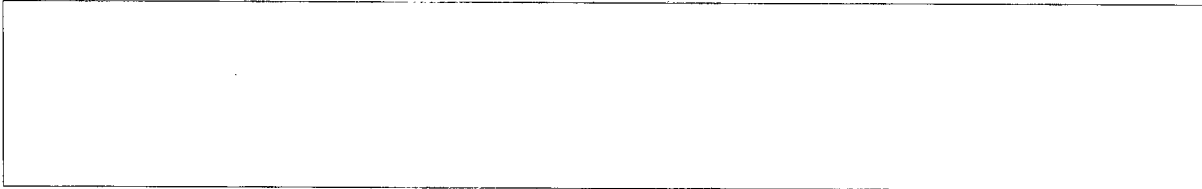


FIGURE 3. PLUNGE ARMY BARRACKS. Sketch compiled from [redacted] October 1964.



REFERENCES

PHOTOGRAPHY



MAPS OR CHARTS

US Air Target Chart, Series 200, Sheet 0168-1HL, 2d ed, Jul 62 (SECRET)

DOCUMENTS

Army. PIB-TK-180-62, *Military Installation, Plunge, USSR*, Nov 62 (TOP SECRET RUFF)

REQUIREMENT

DIAAP-1-15-64 (partial answer)

NPIC PROJECT

11904/64



~~TOP SECRET~~

TOP SECRET