



PHOTOGRAPHIC INTERPRETATION REPORT

# SOVIET MILITARY ORDER OF BATTLE BALTIC MD

APPROVED FOR RELEASE  
Historical Collection Division  
HR70-14  
DATE: 04-27-2012



CIA



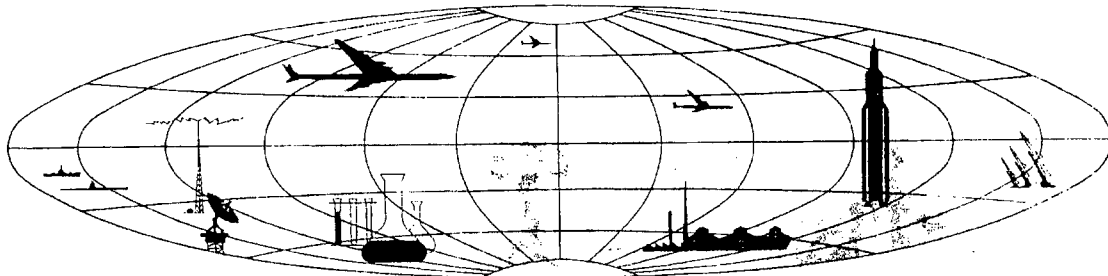
DIA

Handle Via **TALENT - KEYHOLE** Control Only

WARNING

This document contains classified information affecting the national security of the United States within the meaning of the espionage laws U. S. Code Title 18, Sections 793 and 794. The law prohibits its transmission or the revelation of its contents in any manner to an unauthorized person, as well as its use in any manner prejudicial to the safety or interest of the United States or for the benefit of any foreign government to the detriment of the United States. It is to be seen only by personnel especially indoctrinated and authorized to receive TALENT-KEYHOLE information. Its security must be maintained in accordance with KEYHOLE and TALENT regulations.

NATIONAL PHOTOGRAPHIC INTERPRETATION CENTER



~~TOP SECRET RUFF~~

TCS-80403, '65

## PREFACE

This report is one in a series on Soviet Ground Force and Logistic installations being prepared for a DIA/CIA Panel. The series is being coordinated, published and disseminated by NPIC. The photographic analysis is being performed by the NPIC Photographic Analysis Group, the CIA Photographic Intelligence Division (NPIC), and the Production Center 1P1a (DIA). The photographic analysis for this particular report was performed by the Production Center 1P1a.

In the interest of uniformity, the titles and letter designators for the facilities observed at these installations are identical with those appearing in the project requirement. When a specific facility is not observed both its title and letter designator are omitted in the report.

Titles and letter designators for the various facilities are as follows: (A) railroad service, (B) road service, (C) landing strips, (D) administrative and troop housing areas, (E) storage areas, (F) ammunition storage areas, (G) POL storage areas, (H) other buildings and facilities, (J) equipment storage/maintenance areas, (K) athletic fields, (L) small arms firing ranges, (M) driver training areas, (N) tank/assault gun firing ranges, (P) flat trajectory firing ranges, (Q) artillery emplacements (batteries), (R) infantry or combined arms field training areas or courses, (S) special training facilities, (T) unidentified facilities or tracking activity.

- 1 -

~~TOP SECRET RUFF~~

PAPLAKA ARMY CAMP  
(56-27N 021-27E)  
PAPLAKA, LATVIYSKAYA SSR, USSR  
BALTIC MD

BE No:

AL No:

COMOR No:

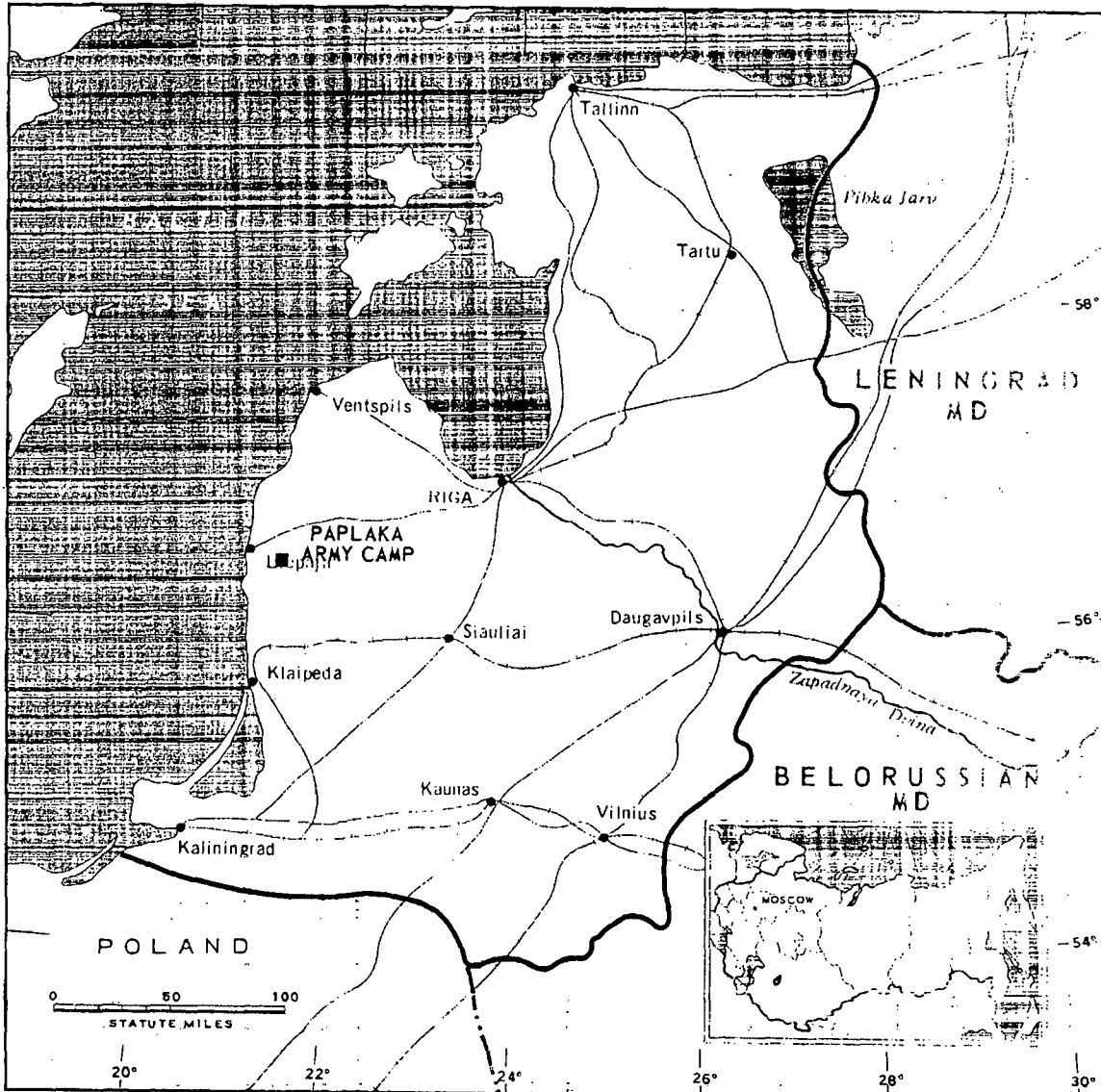


FIGURE 1. LOCATION OF PAPLAKA ARMY CAMP.

NPIC J-9132 (3/65)

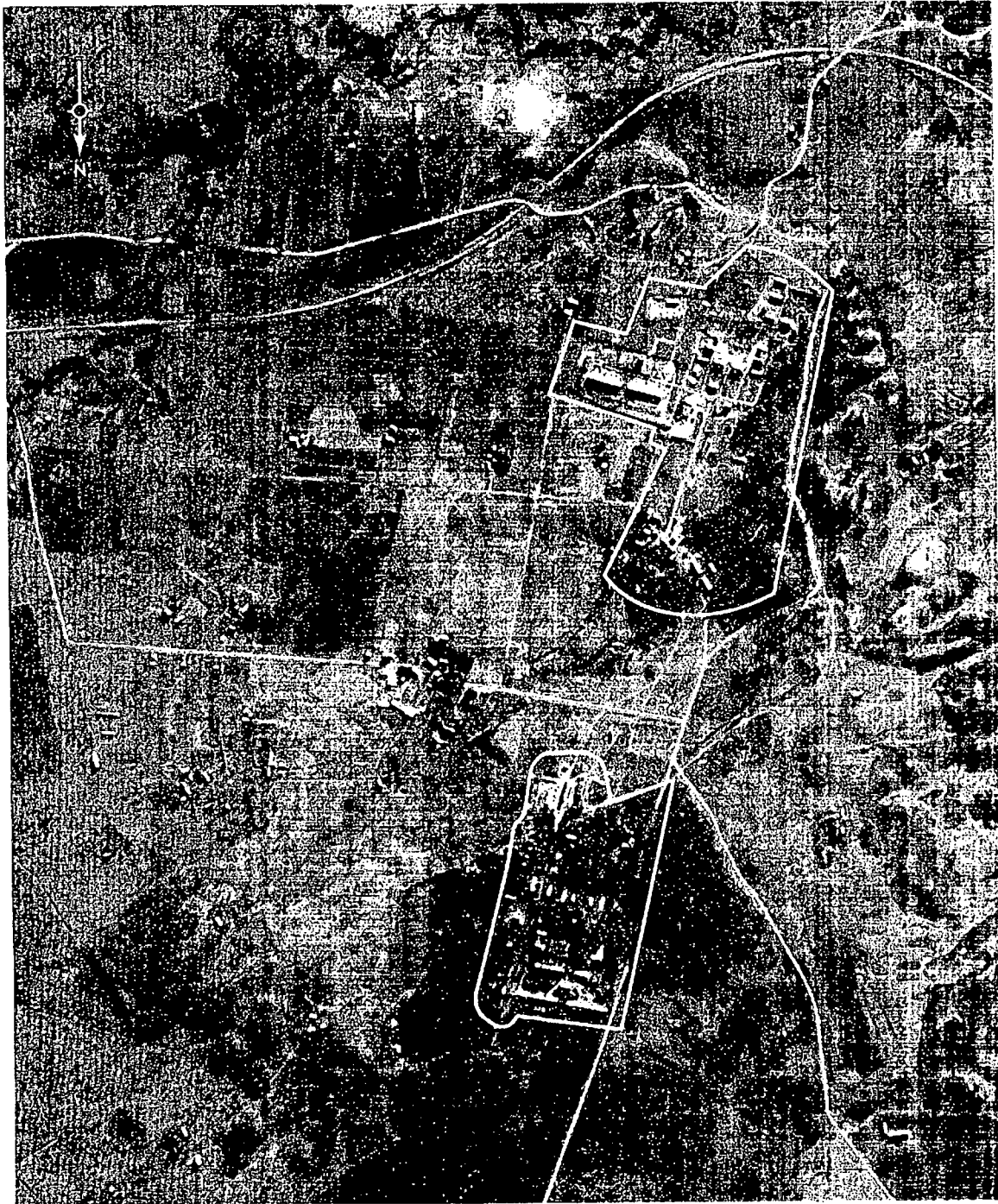


FIGURE 2. PAPLAKA ARMY CAMP, PAPLAKA, USSR, NOVEMBER 1964.

NPIC J-9133 12/65

SUMMARY

Paplaka Army Camp is located in the center of Paplaka, which consists of scattered farm buildings (Figure 1). Priekule, the nearest built-up area, is located 9 kilometers east of Paplaka Army Camp.

This installation covers 125 acres and contains 88 buildings including 12 storage, 38 support, 1 vehicle storage, 4 vehicle storage/

maintenance, 11 dependents quarters, 17 barracks, and 5 barracks/administration (Figures 2 and 3).

Four KEYHOLE missions of interpretable photography covered the area from July 1962 to November 1964. Comparative analysis reveals no change in the physical facilities or levels of usage.

DESCRIPTION OF INSTALLATION

Railroad Service

The main Liepaja-Vainode rail line passes 500 meters south.

Road Service

The installation is accessible by road and has an internal road network.

Administration and Troop Housing Areas

Area D1 contains 5 single-story barracks, 5 multistory barracks, and 28 support buildings.

Area D2 contains 7 single-story barracks, 5 multistory barracks/administration buildings, 11 dependents quarters, and 5 support buildings.

General Storage Areas

Area E1 contains 6 storage buildings and 2 support buildings.

Area E2 contains 6 storage buildings and 1 support building.

Equipment Storage/Maintenance Areas

Area J1 contains three 145- by 45-foot vehicle storage/maintenance buildings and 2 support buildings.

Area J2 contains one 90- by 35-foot vehicle storage/maintenance building and 1 vehicle storage building measuring 80 by 40 feet.

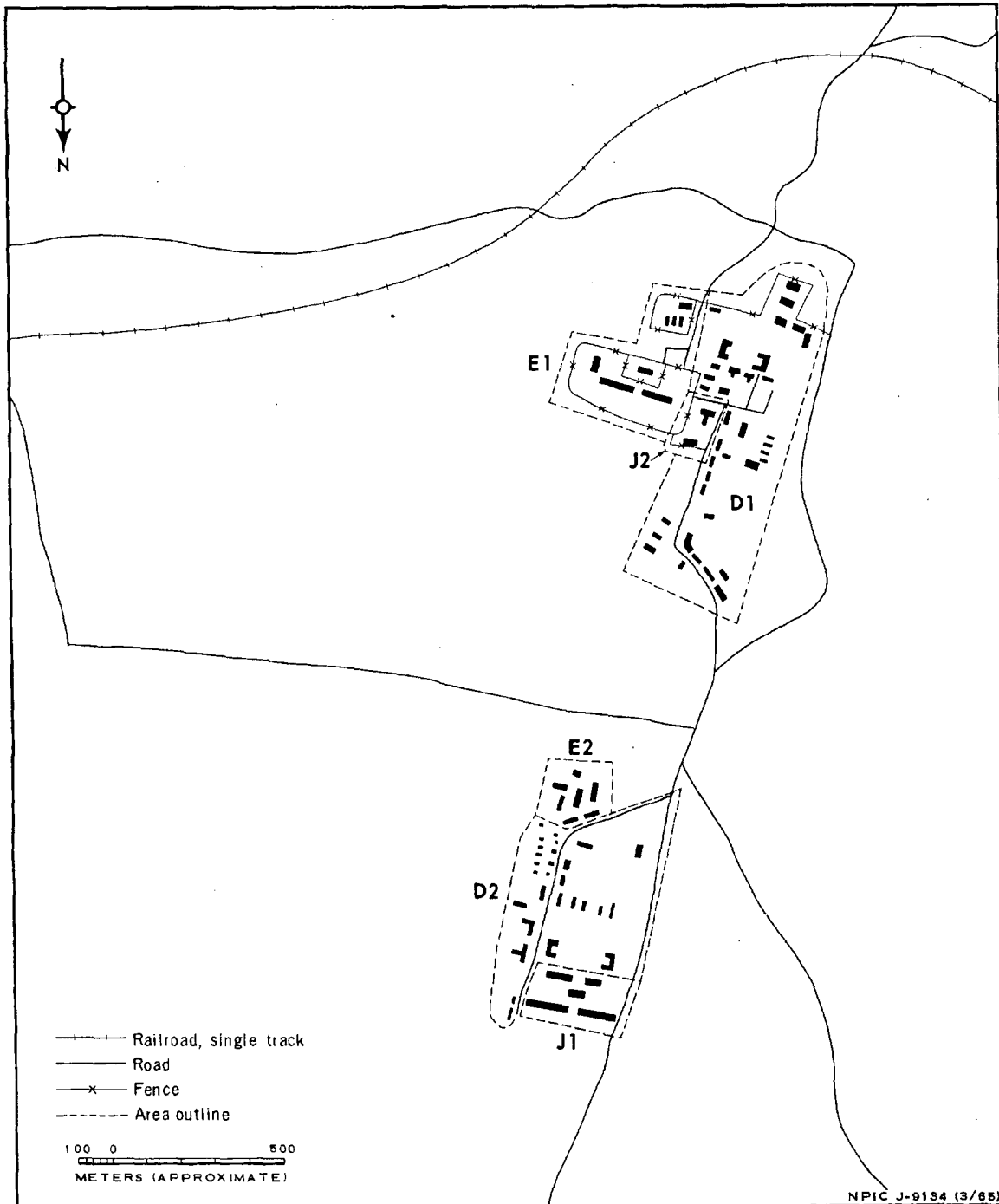


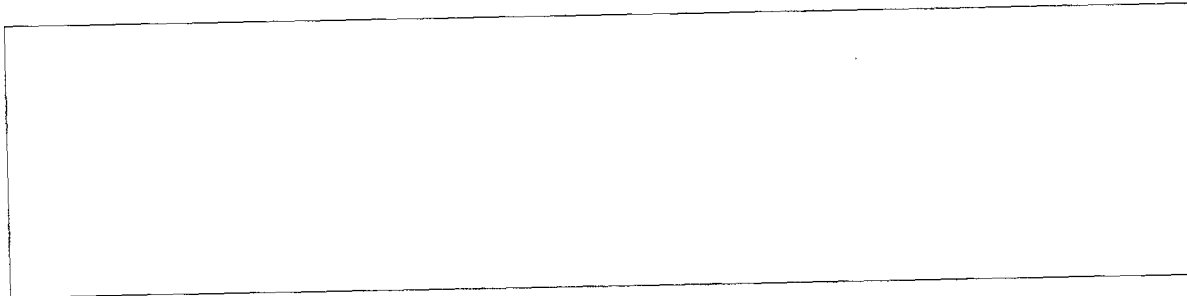
FIGURE 3. PAPLAKA ARMY CAMP. Sketch compiled from Mission [redacted] November 1964.

~~TOP SECRET RUFF~~

Handle Via  
TALENT-KEYHOLE  
Control System Only

TCS-80403/65

REFERENCES



MAPS OR CHARTS

US Air Target Chart, Series 200, Sheet 0152-25HL, 5th ed, Jul 63 (SECRET)

REQUIREMENT

DIAAP-1-15-64 (partial answer)

NPIC PROJECT

11904/64

- 6 -

~~TOP SECRET RUFF~~

Handle Via  
TALENT-KEYHOLE  
Control System Only

~~TOP SECRET~~

~~TOP SECRET~~