

HR70-14

~~TOP SECRET~~

Copy 103

6 Pages

March 1965



PHOTOGRAPHIC INTERPRETATION REPORT

SOVIET MILITARY ORDER OF BATTLE

BALTIC MD

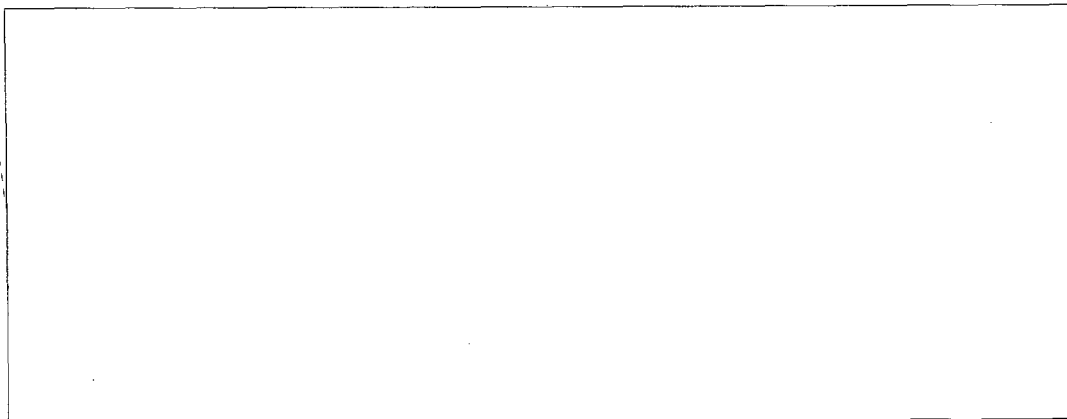
APPROVED FOR RELEASE
 Historical Collection Division
 HR70-14
 DATE: 04-27-2012



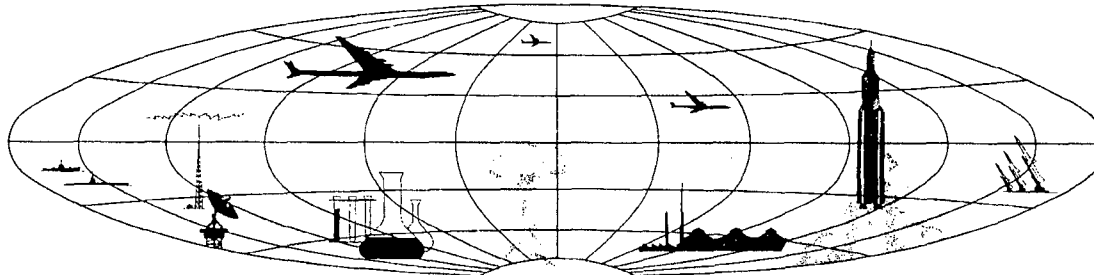
CIA



DIA



NATIONAL PHOTOGRAPHIC INTERPRETATION CENTER



~~TOP SECRET~~

GROUP 1
Excluded from automatic
downgrading and declassification

PREFACE

This report is one in a series on Soviet Ground Force and Logistic installations being prepared for a DIA/CIA Panel. The series is being coordinated, published and disseminated by NPIC. The photographic analysis is being performed by the NPIC Photographic Analysis Group, the CIA Photographic Intelligence Division (NPIC), and the Production Center 1P1a (DIA). The photographic analysis for this particular report was performed by the Production Center 1P1a.

In the interest of uniformity, the titles and letter designators for the facilities observed at these installations are identical with those appearing in the project requirement. When a specific facility is not observed both its title and letter designator are omitted in the report.

Titles and letter designators for the various facilities are as follows: (A) railroad service, (B) road service, (C) landing strips, (D) administrative and troop housing areas, (E) storage areas, (F) ammunition storage areas, (G) POL storage areas, (H) other buildings and facilities, (J) equipment storage/maintenance areas, (K) athletic fields, (L) small arms firing ranges, (M) driver training areas, (N) tank/assault gun firing ranges, (P) flat trajectory firing ranges, (Q) artillery emplacements (batteries), (R) infantry or combined arms field training areas or courses, (S) special training facilities, (T) unidentified facilities or tracking activity.

~~TOP SECRET RUFF~~

PRIEKULE ARMY BARRACKS NORTHEAST

(56-27N 021-37E)

PRIEKULE, LATVIYSKAYA SSR, USSR

BALTIC MD

AL No:

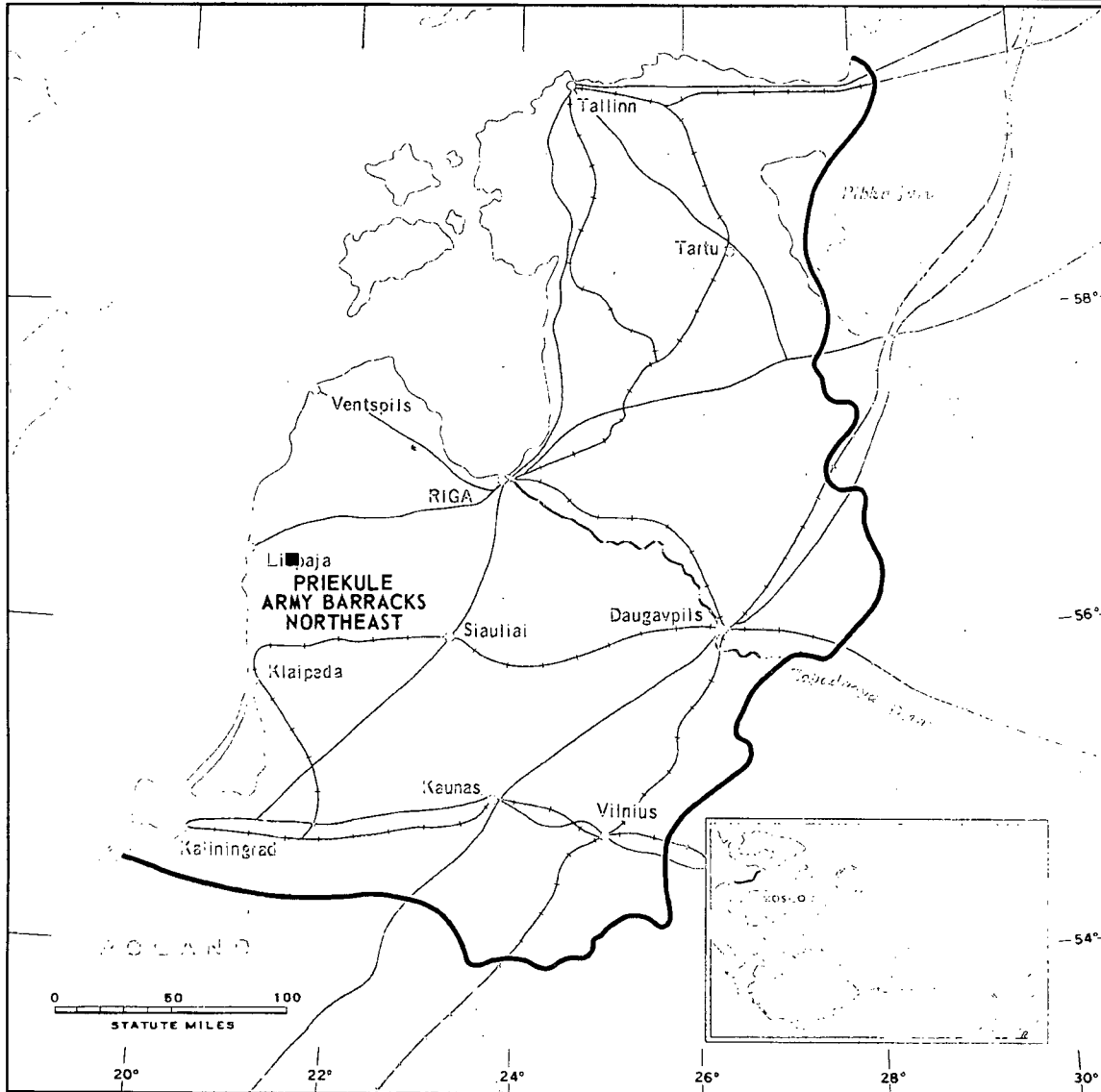


FIGURE 1. LOCATION OF PRIEKULE ARMY BARRACKS NORTHEAST.

NPIC J-8824 (3/65)

- 2 -

~~TOP SECRET RUFF~~

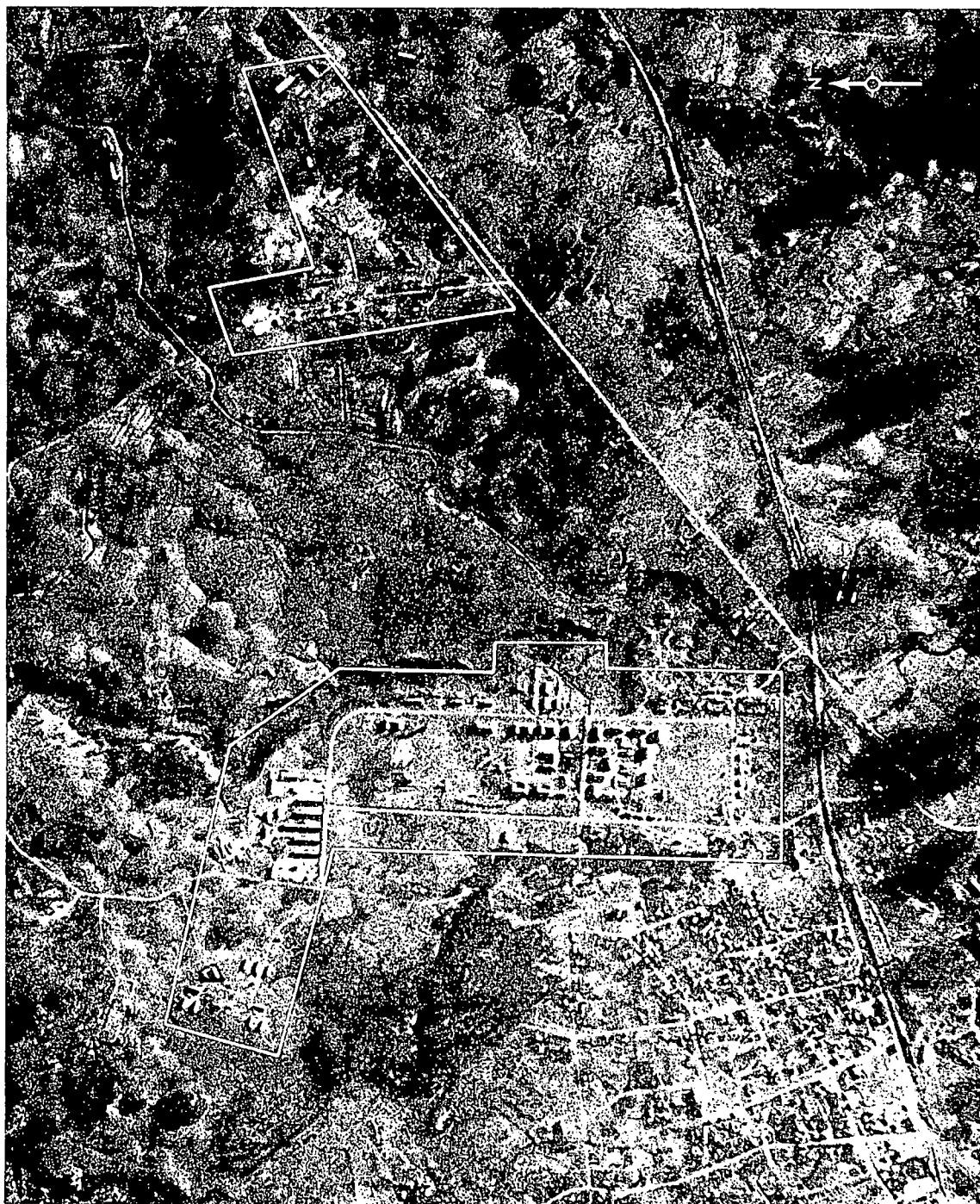
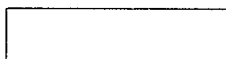
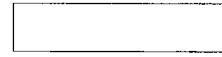


FIGURE 2. PRIEKULE ARMY BARRACKS NORTHEAST, PRIEKULE, USSR, NOVEMBER 1964.

NPIC J-8825 (3/65)





SUMMARY

Priekule Army Barracks Northeast is located 1 kilometer (km) east of Priekule (Figure 1). The installation covers 275 acres and contains the following buildings: 15 barracks, 7 administration, 18 support, 30 storage, and 28 dependents quarters. A storage area 2 km east, probably associated with Priekule Army Bar-

racks Northeast, contains 19 storage buildings and a support building (Figures 2 and 3).

Interpretable photography on 4 KEYHOLE missions from July 1962 to November 1964 indicates no change in the physical facilities or level of usage.

DESCRIPTION OF INSTALLATION

Railroad Service

The Liepaja-Vainode railroad passes 100 meters south.

Road Service

The installation is served by city streets.

Administration and Troop Housing Area

Area D contains 7 multistory irregularly shaped administration buildings, 10 multistory barracks, 5 single-story barracks, and 5 support buildings.

General Storage Areas

Area E1 contains 9 storage buildings.

Area E2 contains 18 storage buildings (1 bunkered) and 13 support buildings.

Area E3 contains 19 storage buildings and a support building.

Other Buildings

Area H contains 28 dependents quarters and 3 storage buildings.

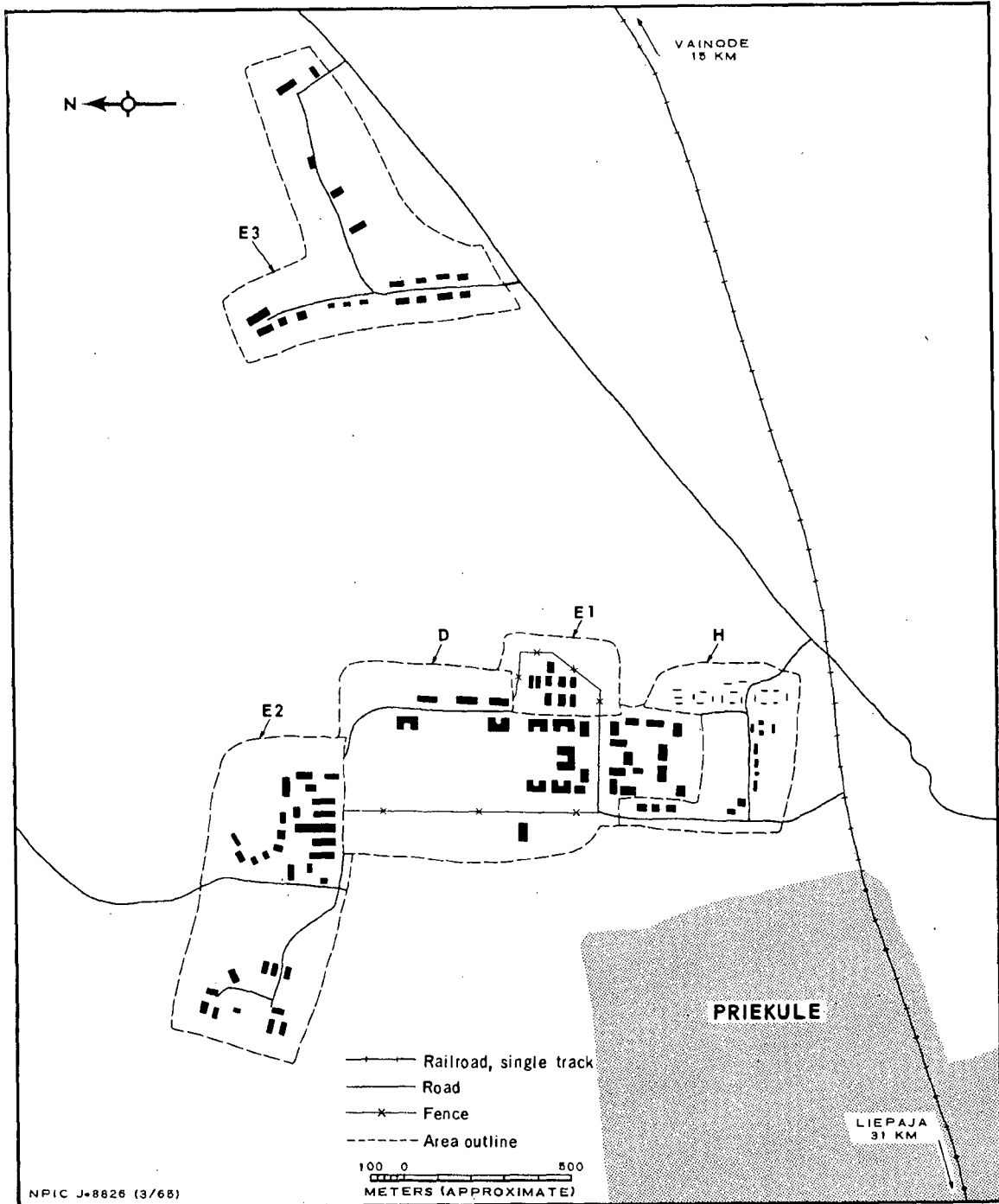


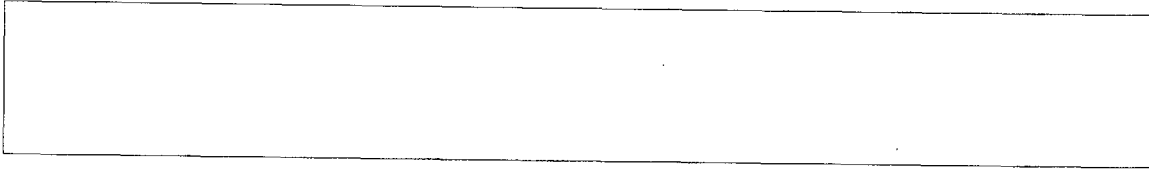
FIGURE 3. PRIEKULE ARMY BARRACKS NORTHEAST. Sketch compiled from [redacted] November 1964.

~~TOP SECRET RUFF~~



REFERENCES

PHOTOGRAPHY



MAPS OR CHARTS

US Air Target Chart, Series 200, Sheet 0152-25HL, 5th ed, Jul 63 (SECRET)

DOCUMENT

Army. PIB-TK-73-62, *Military Camp Prickule, Latvia*, Jul 62 (TOP SECRET RUFF)

REQUIREMENT

DIAAP-1-15-64 (partial answer)

NPIC PROJECT

11904/64

~~TOP SECRET RUFF~~



~~TOP SECRET~~

~~TOP SECRET~~