

HR70-14

~~TOP SECRET~~

Copy **108**
6 Pages

TCS-80109/65
February 1965



PHOTOGRAPHIC INTERPRETATION REPORT

APPROVED FOR
RELEASE-HISTORICAL
COLLECTION
DIVISION-HR70-14
DATE: 05-10-2012

SOVIET MILITARY ORDER OF BATTLE BALTIC MD



CIA



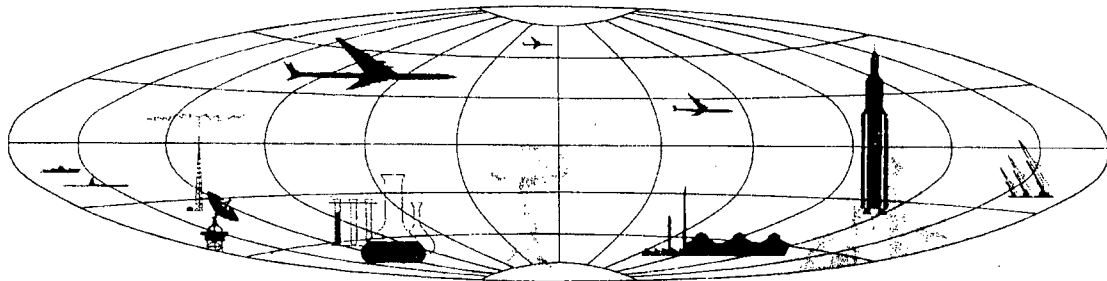
DIA

Handle Via **TALENT - KEYHOLE** Control Only

WARNING

This document contains classified information affecting the national security of the United States within the meaning of the espionage laws U. S. Code Title 18, Sections 793 and 794. The law prohibits its transmission or the revelation of its contents in any manner to an unauthorized person, as well as its use in any manner prejudicial to the safety or interest of the United States or for the benefit of any foreign government to the detriment of the United States. It is to be seen only by personnel especially indoctrinated and authorized to receive TALENT-KEYHOLE information. Its security must be maintained in accordance with KEYHOLE and TALENT regulations.

NATIONAL PHOTOGRAPHIC INTERPRETATION CENTER



~~TOP SECRET~~

GROUP
Excluded from automatic
downgrading and declassification

~~TOP SECRET RUFF~~

Handle Via
TALENT-KEYHOLE
Control System Only

TCS-80109/65

PREFACE

This report is one in a series on Soviet Ground Force and Logistic installations being prepared for a DIA/CIA Panel. The series is being coordinated, published and disseminated by NPIC. The photographic analysis is being performed by the NPIC Photographic Analysis Group, the CIA Photographic Intelligence Division (NPIC), and the Production Center 1P1a (DIA). The photographic analysis for this particular report was performed by the Production Center 1P1a.

In the interest of uniformity, the titles and letter designators for the facilities observed at these installations are identical with those appearing in the project requirement. When a specific facility is not observed both its title and letter designator are omitted in the report.

Titles and letter designators for the various facilities are as follows: (A) railroad service, (B) road service, (C) landing strips, (D) administrative and troop housing areas, (E) storage areas, (F) ammunition storage areas, (G) POL storage areas, (H) other buildings and facilities, (J) equipment storage/maintenance areas, (K) athletic fields, (L) small arms firing ranges, (M) driver training areas, (N) tank/assault gun firing ranges, (P) flat trajectory firing ranges, (Q) artillery emplacements (batteries), (R) infantry or combined arms field training areas or courses, (S) special training facilities, (T) unidentified facilities or tracking activity.

- 1 -

~~TOP SECRET RUFF~~

Handle Via
TALENT-KEYHOLE
Control System Only

Handle Via
TALENT-KEYHOLE
Control System Only

TCS-80109/65

GUSEV ARMY BARRACKS ROMINTE RIVER SOUTH

(54-35N 022-10E)

GUSEV, KALININGRADSKAYA OBLAST, USSR

BALTIC MD

BE No:

AL No:

COMOR No:

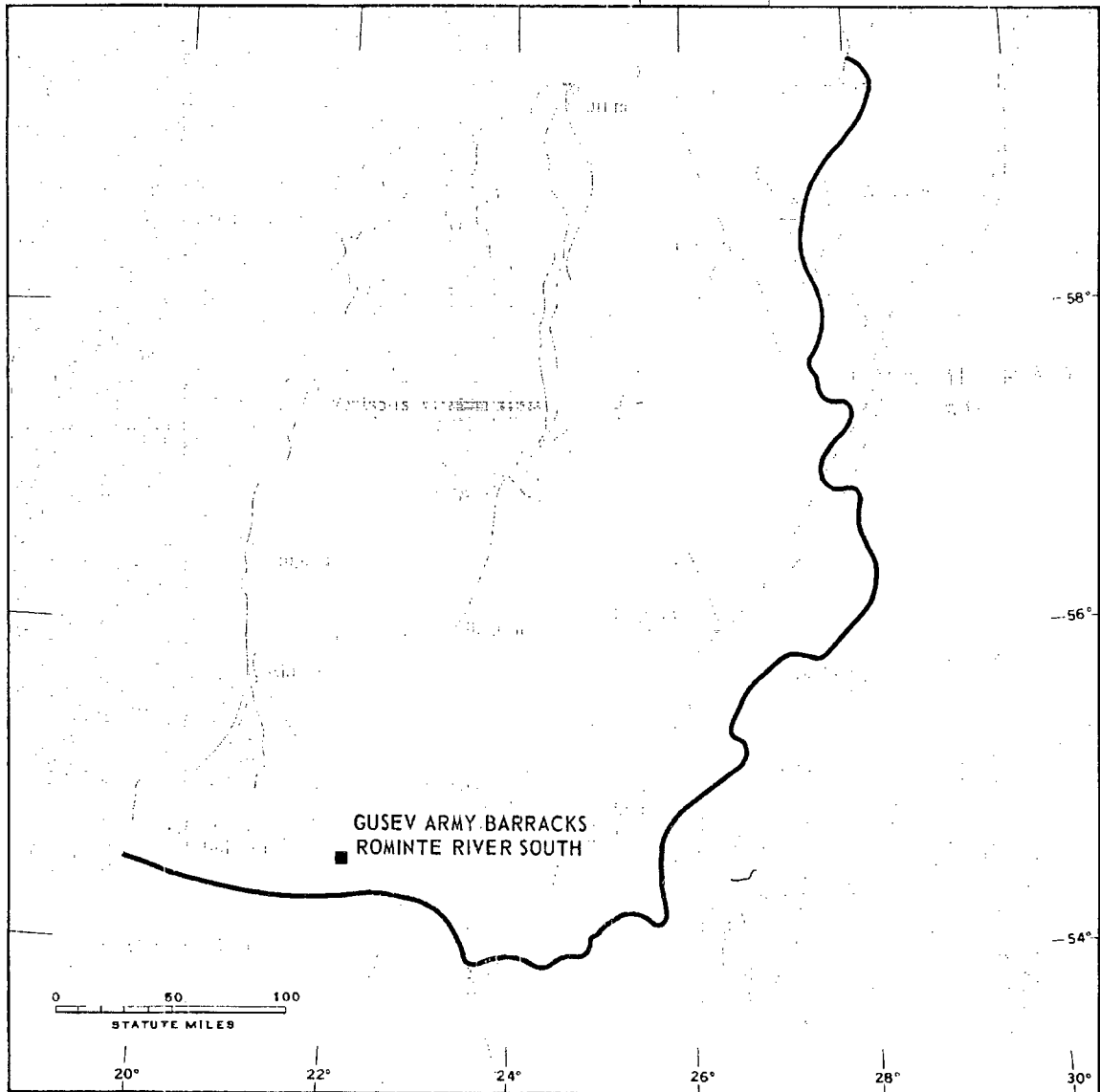


FIGURE 1. LOCATION OF GUSEV ARMY BARRACKS ROMINTE RIVER SOUTH.

Handle Via
TALENT-KEYHOLE
Control System Only

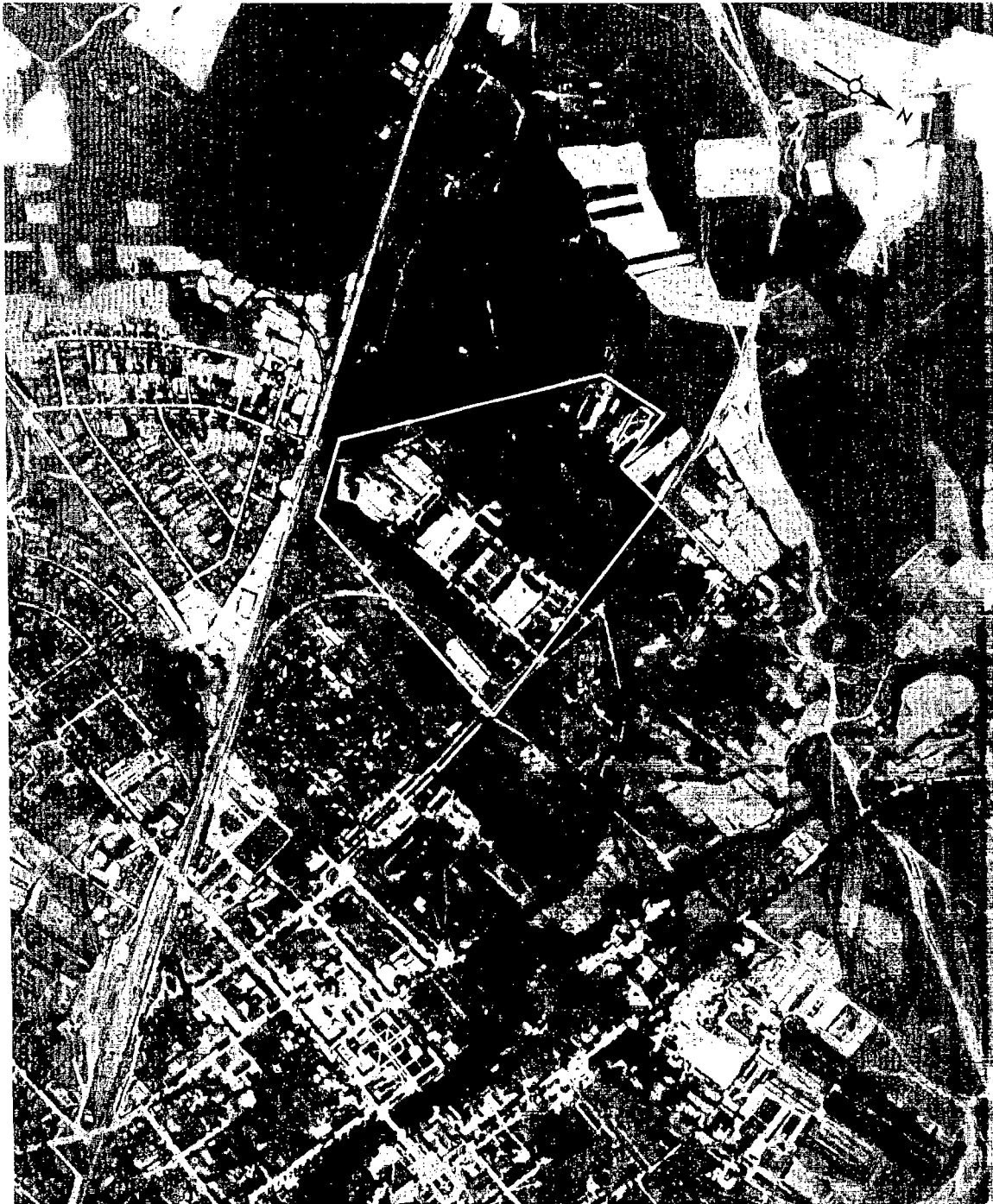


FIGURE 2. GUSEV ARMY BARRACKS ROMINTE RIVER SOUTH, GUSEV, USSR, JUNE 1964.

SUMMARY

Gusev Army Barracks Rominte River South is located at the south edge of Gusev (Figure 1) and is within 4 kilometers (km) of the Gusev Military Barracks North and Northeast.

The area is road and rail served, covers 53 acres, and contains one U-shaped barracks/administration-type building, 13 barracks, 7

storage buildings, 2 vehicle garages, and a small-arms firing range (Figures 2 and 3).

Six KEYHOLE missions of interpretable quality photography from December 1961 to August 1964 covered this area. Comparative analysis reveals no significant changes.

DESCRIPTION OF INSTALLATION

Railroad Service

A rail line is 165 feet east of the area.

Road Service

The installation is served by city streets.

Administrative and Troop Housing Area

Area D contains 5 multistory barracks, 8 single story barracks, and a U-shaped barracks/administration-type building.

General Storage Area

Area E1 contains 4 shed-type buildings and Area E2 contains 2 shed-type buildings. E3 is a 200-foot shed-type storage building adjacent to a rail spur.

Equipment Storage/Maintenance Area

Area J contains one 120- by 30-foot vehicle garage and one 350- by 30-foot possible vehicle garage.

Small-Arms Firing Ranges

Two small-arms firing ranges with 3 small buildings are located 530 feet west of the barracks area. Area L1 is 140 by 80 feet with 3 firing lanes, and Area L2 is 165 by 60 feet with 2 firing lanes.

Unidentified Facilities or Tracking Activity

An unidentified road pattern with 1 building is located next to Area L2.

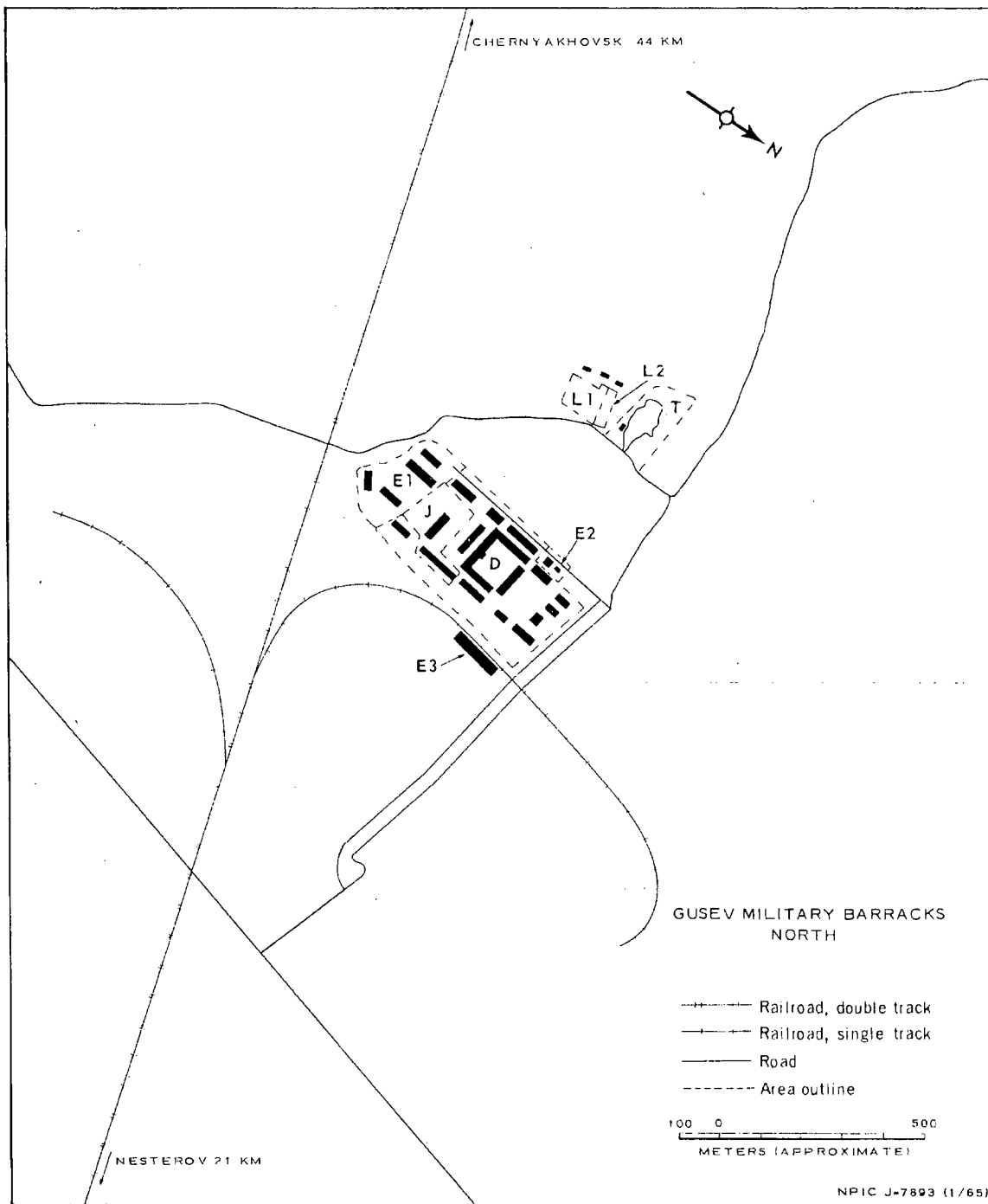
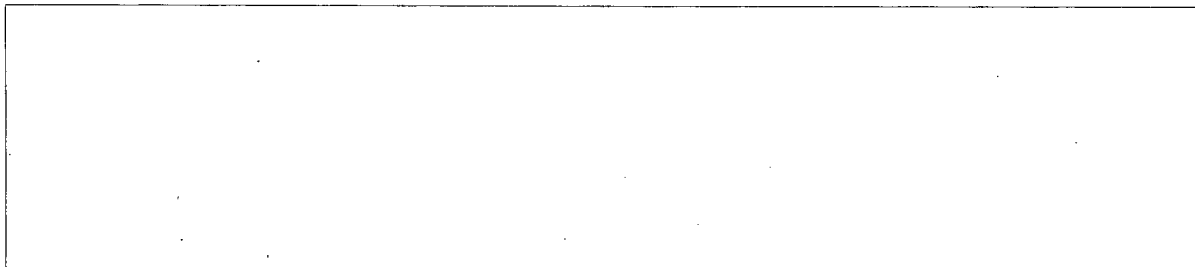


FIGURE 3. GUSEV ARMY BARRACKS ROMINTE RIVER SOUTH. Sketch compiled from June 1964.

REFERENCES

PHOTOGRAPHY



MAPS OR CHARTS

US Air Target Chart, Series 200, Sheet 0168-6HL. 2d ed, Aug 62 (SECRET)

DOCUMENTS

Army. PIB-TK-49-62, *Gusev Army Barracks Area*, Jun 62 (TOP SECRET RUFF)

REQUIREMENT

DIAAP-1-15-64 (partial answer)

NPIC PROJECT

11904/64

~~TOP SECRET~~

~~TOP SECRET~~