



PHOTOGRAPHIC INTERPRETATION REPORT

SOVIET MILITARY ORDER OF BATTLE BALTIC MD

APPROVED FOR RELEASE
Historical Collection Division
HR70-14
DATE: 04-27-2012



CIA



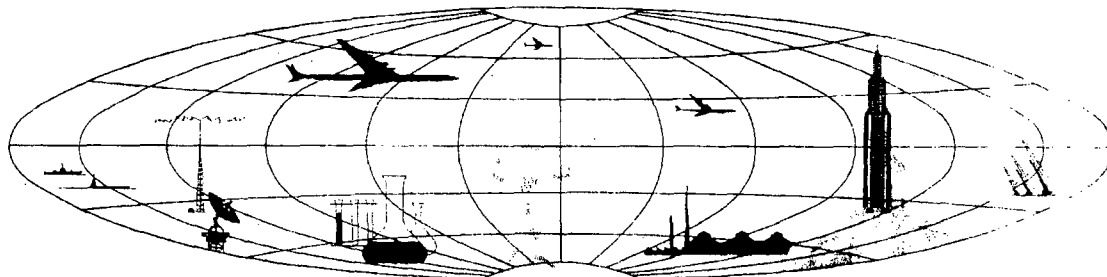
DIA

Handle Via **TALENT - KEYHOLE** Control Only

WARNING

This document contains classified information affecting the national security of the United States within the meaning of the espionage laws U. S. Code Title 18, Sections 793 and 794. The law prohibits its transmission or the revelation of its contents in any manner to an unauthorized person, as well as its use in any manner prejudicial to the safety or interest of the United States or for the benefit of any foreign government to the detriment of the United States. It is to be seen only by personnel especially indoctrinated and authorized to receive TALENT-KEYHOLE information. Its security must be maintained in accordance with KEYHOLE and TALENT regulations.

NATIONAL PHOTOGRAPHIC INTERPRETATION CENTER



~~TOP SECRET RUFF~~

TCO-80211/65

PREFACE

This report is one in a series on Soviet Ground Force and Logistic installations being prepared for a DIA/CIA Panel. The series is being coordinated, published and disseminated by NPIC. The photographic analysis is being performed by the NPIC Photographic Analysis Group, the CIA Photographic Intelligence Division (NPIC), and the Production Center IP1a (DIA). The photographic analysis for this particular report was performed by the Production Center IP1a.

In the interest of uniformity, the titles and letter designators for the facilities observed at these installations are identical with those appearing in the project requirement. When a specific facility is not observed both its title and letter designator are omitted in the report.

Titles and letter designators for the various facilities are as follows: (A) railroad service, (B) road service, (C) landing strips, (D) administrative and troop housing areas, (E) storage areas, (F) ammunition storage areas, (G) POL storage areas, (H) other buildings and facilities, (I) equipment storage/maintenance areas, (K) athletic fields, (L) small arms firing ranges, (M) driver training areas, (N) tank/assault gun firing ranges, (P) flat trajectory firing ranges, (Q) artillery emplacements (batteries), (R) infantry or combined arms field training areas or courses, (S) special training facilities, (T) unidentified facilities or tracking activity.

~~TOP SECRET RUFF~~

PROBABLE AMMUNITION STORAGE AREA
(54-46N 020-08E)
KALININGRAD, LATVIYSKAYA SSR, USSR
BALTIC MD

BE No:

AL No:

JIB No:

COMOR No:

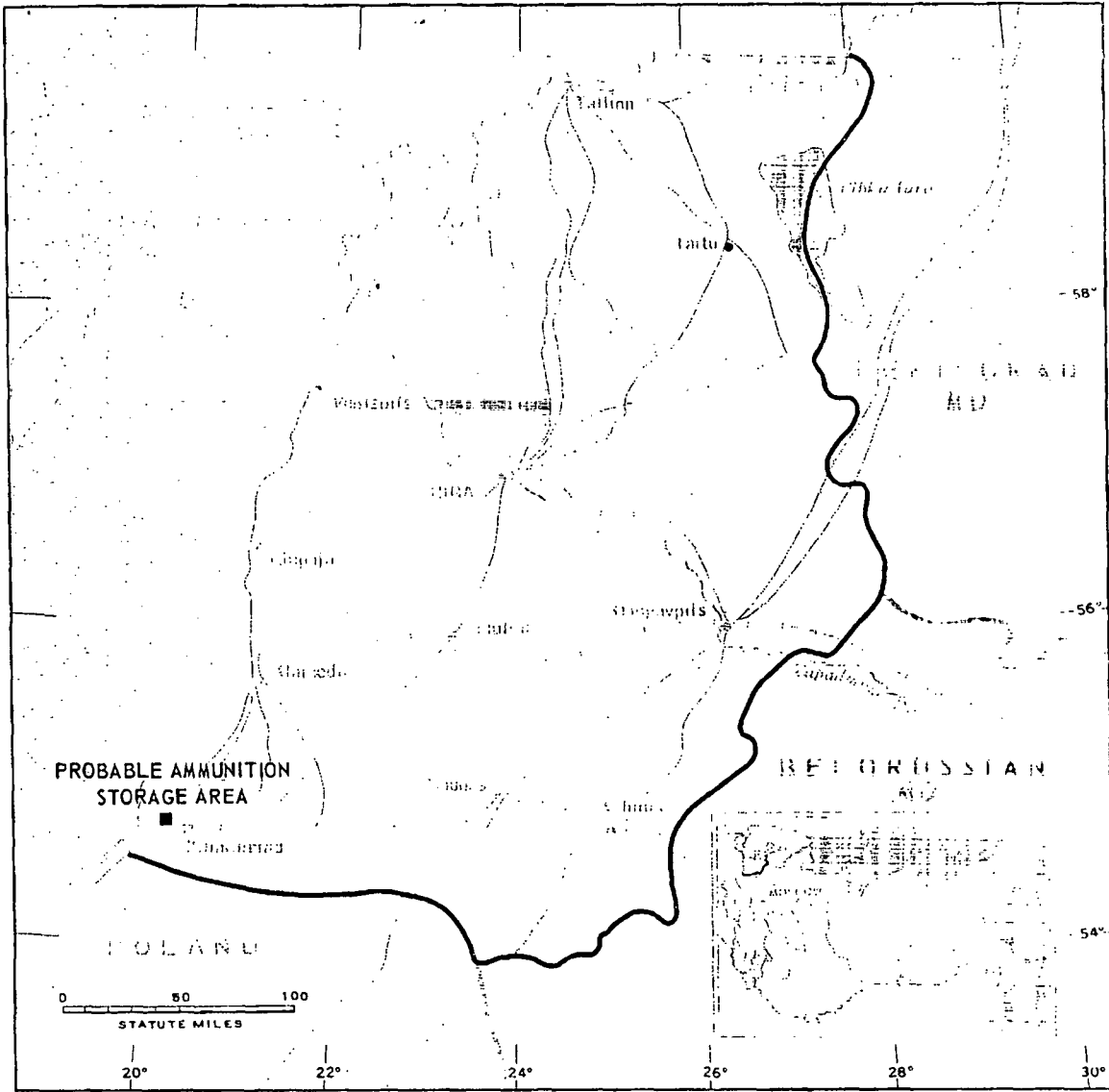


FIGURE 1. LOCATION OF PROBABLE AMMUNITION STORAGE AREA.

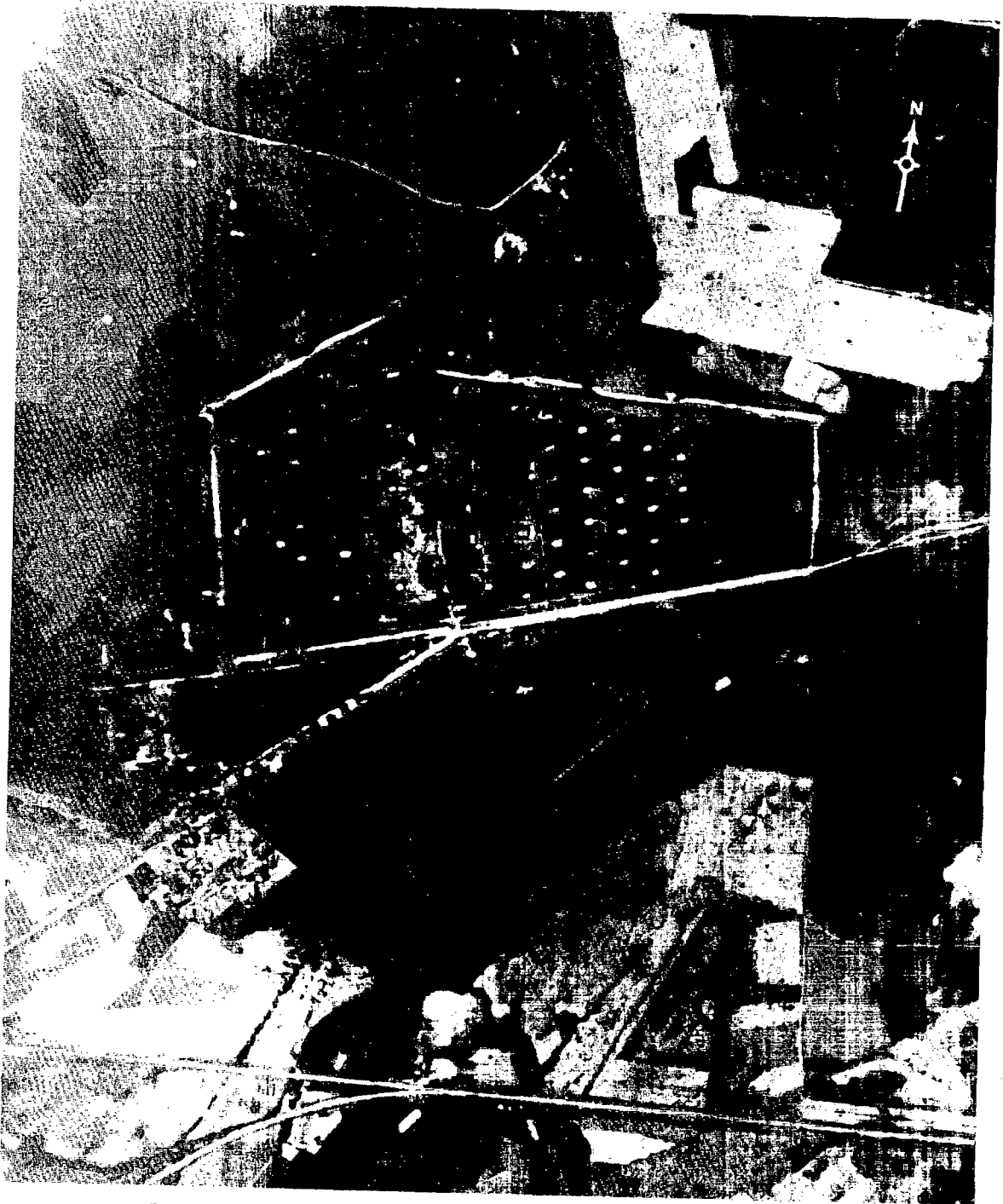


FIGURE 2. PROBABLE AMMUNITION STORAGE AREA, KALININGRAD, USSR, JUNE 1964.

NPIC J-8323 (2/65)

SUMMARY

A probable ammunition storage area is located 2 kilometers (km) west of Kaliningrad Ammunition Depot Medenau [redacted] and 9 km northeast of Primorsk, USSR (Figure 1).

This installation covers approximately 700 acres and contains 82 probable ammunition storage buildings, 2 other storage buildings, and

4 probable administration buildings (Figures 2 and 3).

The area was covered on interpretable photography from 8 KEYHOLE emissions between September 1961 and July 1964. A comparative analysis of this photography reveals no major changes.

DESCRIPTION OF INSTALLATION

Railroad Service

The Kaliningrad-Primorsk rail line passes south of the installation.

Road Service

The installation is served by 2 secondary roads.

Administration and Troop Housing Area

Area D contains 4 probable administration buildings.

Ammunition Storage Area

Area F contains 82 small probable ammunition storage buildings and 2 large storage buildings.

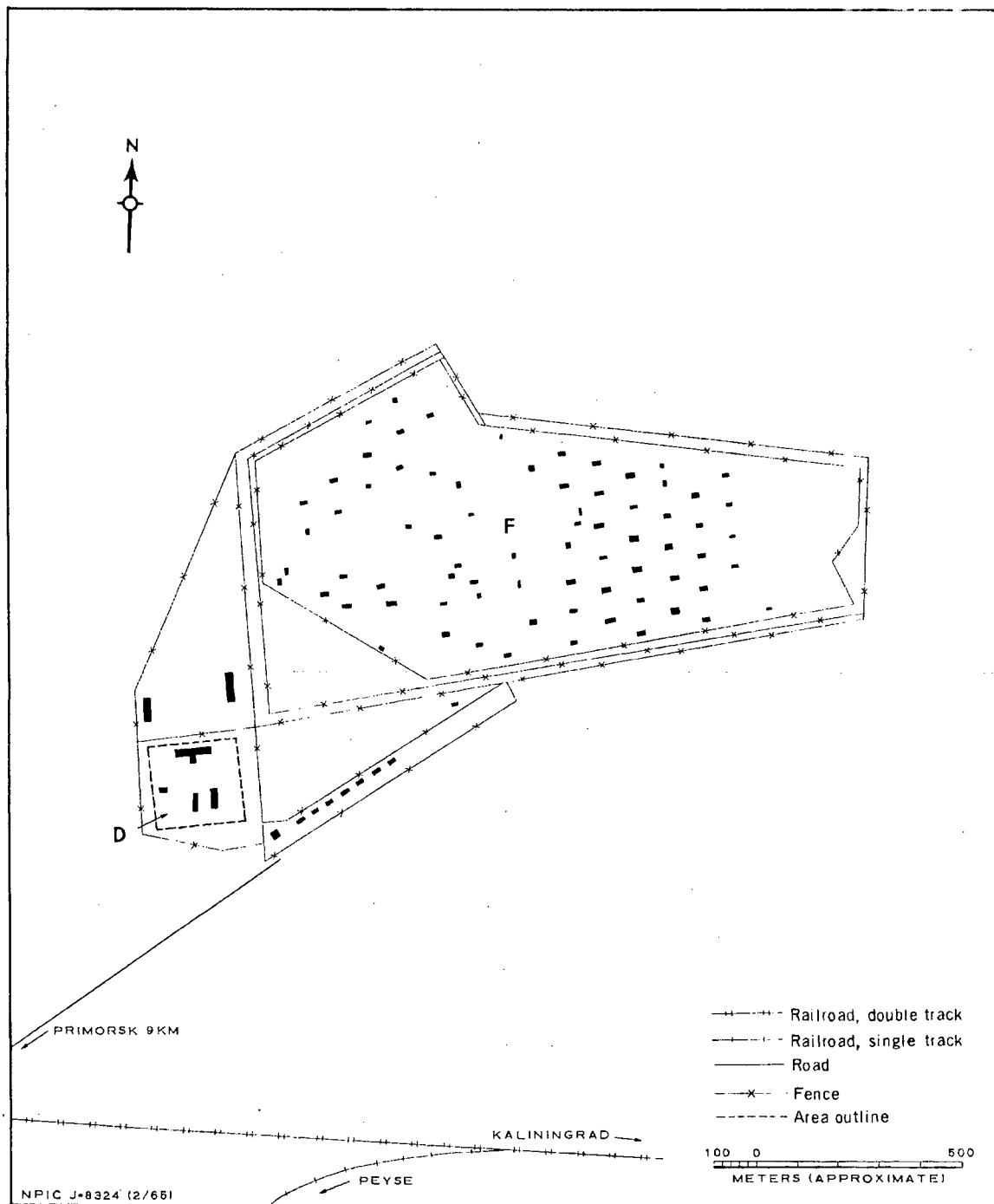


FIGURE 3: PROBABLE AMMUNITION STORAGE AREA. Sketch compiled from [redacted] June 1964.

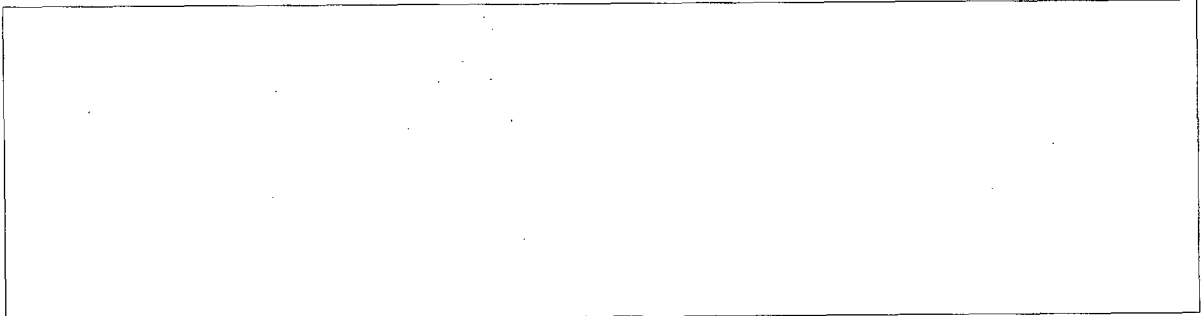
~~TOP SECRET RUFF~~

Handle Via
TALENT-KEYHOLE
Control System Only

TCS-80231/65

REFERENCES

PHOTOGRAPHY



MAPS OR CHARTS

US Air Target Chart, Series 200, Sheet 0169-10HL, 3d ed, Nov 63 (SECRET)

REQUIREMENT

DIAAP-1-15-64 (partial answer)

NPIC PROJECT

11904/64

- 6 -

~~TOP SECRET RUFF~~

Handle Via
TALENT-KEYHOLE
Control System Only

TOP SECRET

TOP SECRET