

PHOTOGRAPHIC INTERPRETATION REPORT

SOVIET MILITARY ORDER OF BATTLE BALTIC MD

APPROVED FOR RELEASE
Historical Collection Division
HR70-14
DATE: 04-27-2012



CIA



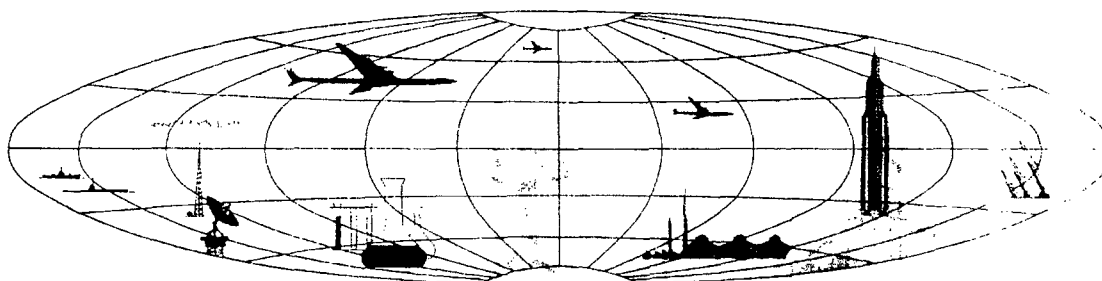
DIA

Handle Via **TALENT - KEYHOLE** Control Only

WARNING

This document contains classified information affecting the national security of the United States within the meaning of the espionage laws U. S. Code Title 18, Sections 793 and 794. The law prohibits its transmission or the revelation of its contents in any manner to an unauthorized person, as well as its use in any manner prejudicial to the safety or interest of the United States or for the benefit of any foreign government to the detriment of the United States. It is to be seen only by personnel especially indoctrinated and authorized to receive TALENT-KEYHOLE information. Its security must be maintained in accordance with KEYHOLE and TALENT regulations.

NATIONAL PHOTOGRAPHIC INTERPRETATION CENTER



~~TOP SECRET RUFF~~

Handle Via
TALENT-KEYHOLE
Control System Only

ICS-80170/00

PREFACE

This report is one in a series on Soviet Ground Force and Logistic installations being prepared for a DIA/CIA Panel. The series is being coordinated, published and disseminated by NPIC. The photographic analysis is being performed by the NPIC Photographic Analysis Group, the CIA Photographic Intelligence Division (NPIC), and the Production Center 1P1a (DIA). The photographic analysis for this particular report was performed by the Production Center 1P1a.

In the interest of uniformity, the titles and letter designators for the facilities observed at these installations are identical with those appearing in the project requirement. When a specific facility is not observed both its title and letter designator are omitted in the report.

Titles and letter designators for the various facilities are as follows: (A) railroad service, (B) road service, (C) landing strips, (D) administrative and troop housing areas, (E) storage areas, (F) ammunition storage areas, (G) POL storage areas, (H) other buildings and facilities, (J) equipment storage/maintenance areas, (K) athletic fields, (L) small arms firing ranges, (M) driver training areas, (N) tank / assault gun firing ranges, (P) flat trajectory firing ranges, (Q) artillery emplacements (batteries), (R) infantry or combined arms field training areas or courses, (S) special training facilities, (T) unidentified facilities or tracking activity.

- 1 -

~~TOP SECRET RUFF~~

Handle Via
TALENT-KEYHOLE
Control System Only

MILITARY INSTALLATION
(57-11N 024-20E)
RIGA, LATVIYSKAYA SSR, USSR
BAL TIC MD

BE No:

AL No:



COMOR No:

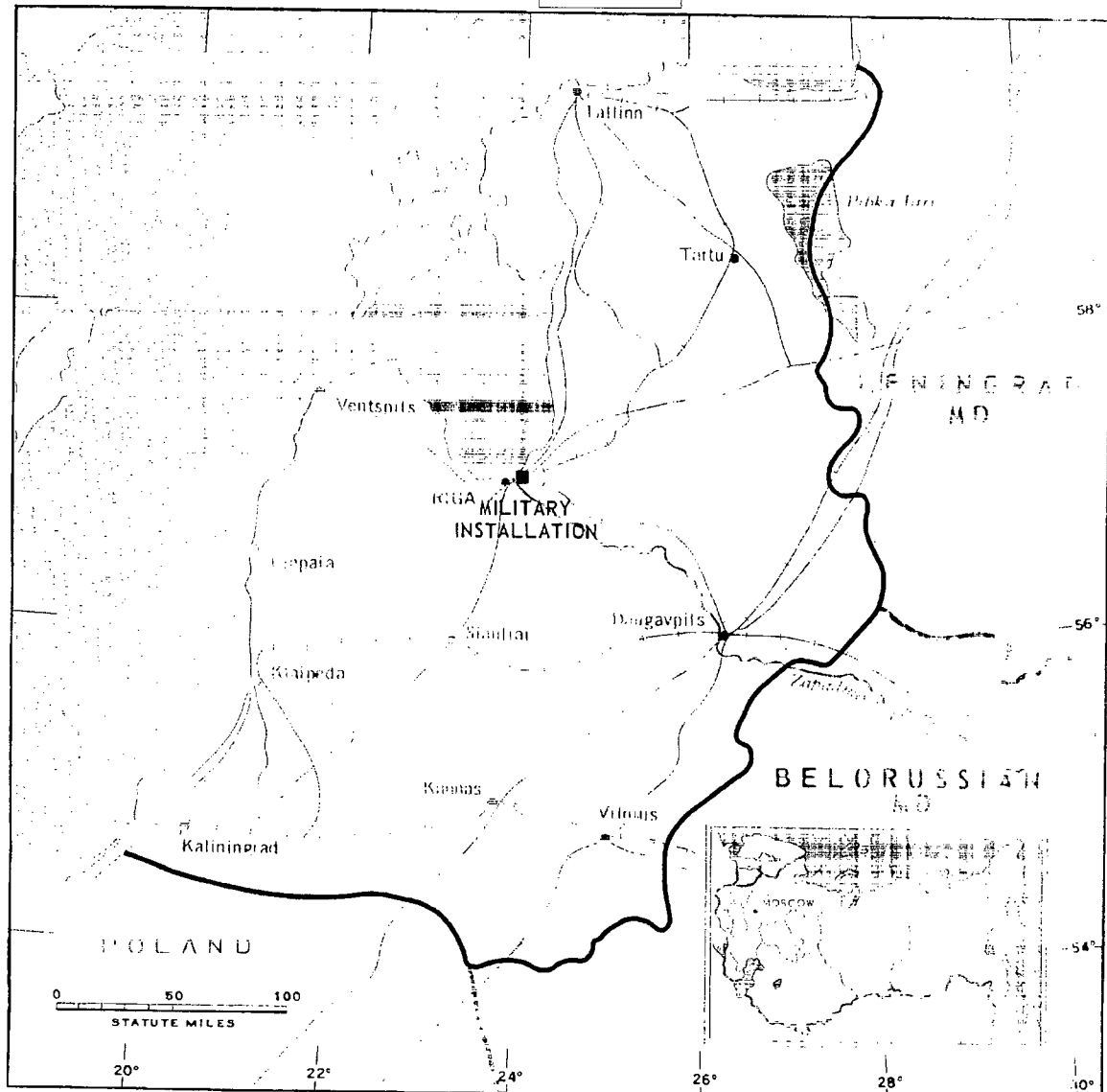


FIGURE 1. LOCATION OF MILITARY INSTALLATION.

NMC J-6116 (2/65)

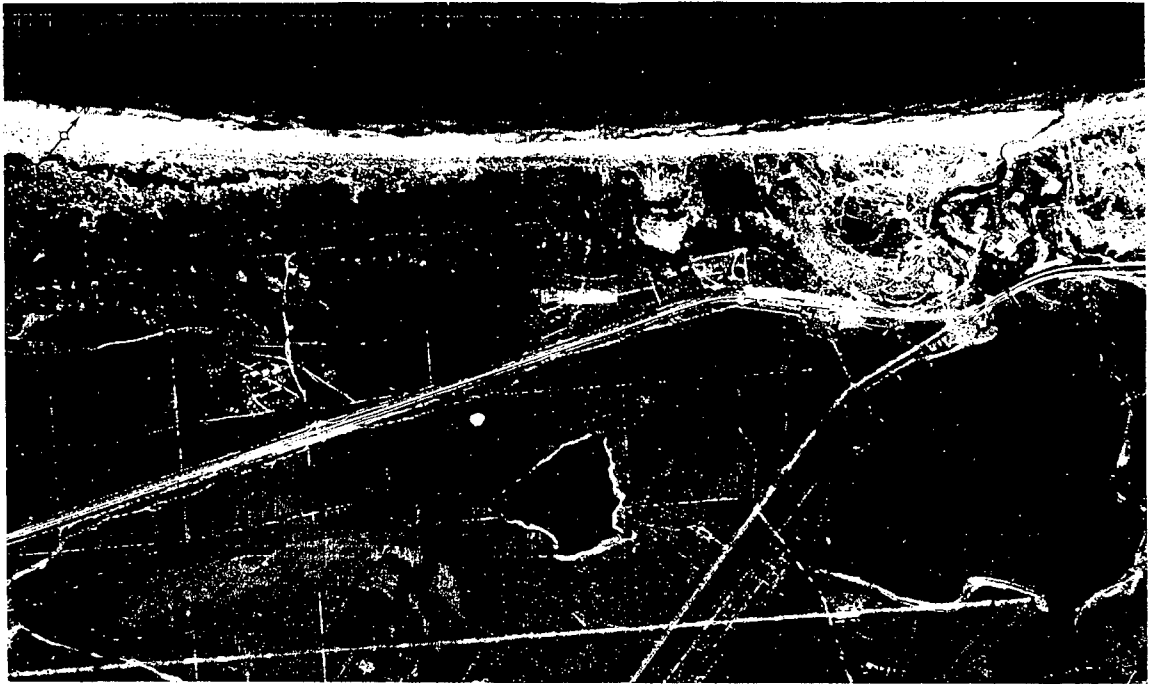


FIGURE 2. MILITARY INSTALLATION, RIGA, USSR, JULY 1964.

SUMMARY

A military installation is located on the Gulf of Riga (Figure 1), immediately north of Riga Barracks and Maneuver Area Ropazi (BE No [redacted]). The function of this installation cannot be determined; it is probably part of Riga Barracks and Maneuver Area Ropazi.

The military installation covers more than 100 acres and contains 2 multistory probable barracks, 5 storage/support buildings, a motor

vehicle park, a probable motor vehicle/equipment maintenance area, a rail transshipment area, a possible POL storage area, and 5 areas of unidentified activity (Figures 2 and 3).

KEYHOLE missions of July and August 1964 provide the only interpretable photography of this installation. It cannot be determined whether the areas of unidentified activity were present prior to 1964.

DESCRIPTION OF INSTALLATION

Railroad Service

A spur from the single-track rail line between Riga and Limbazi enters Area A, a probable transshipment area. Area A contains 3 storage buildings and 2 support buildings.

Area J2 is a probable vehicle/equipment maintenance area with 2 vehicle/equipment maintenance buildings (each 160 by 65 feet), 1 vehicle/equipment maintenance building (160 by 70 feet), 4 storage buildings, and 2 support buildings.

Road Service

Good all-weather roads serve the installation.

Administration and Troop Housing Area

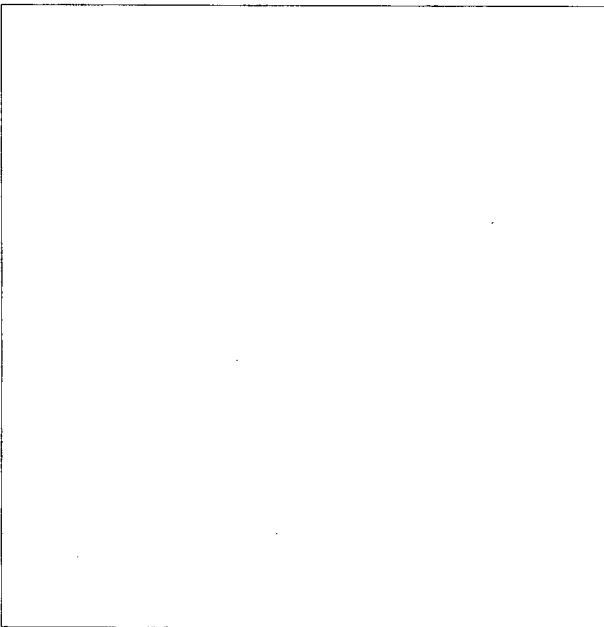
Area D contains 2 multistory probable barracks and 5 storage/support buildings.

POL Storage Area

Area G may contain underground POL storage. No storage tanks are discernible.

Equipment Storage/Maintenance Areas

Area J1 is a vehicle park with approximately 50 vehicles parked under trees.



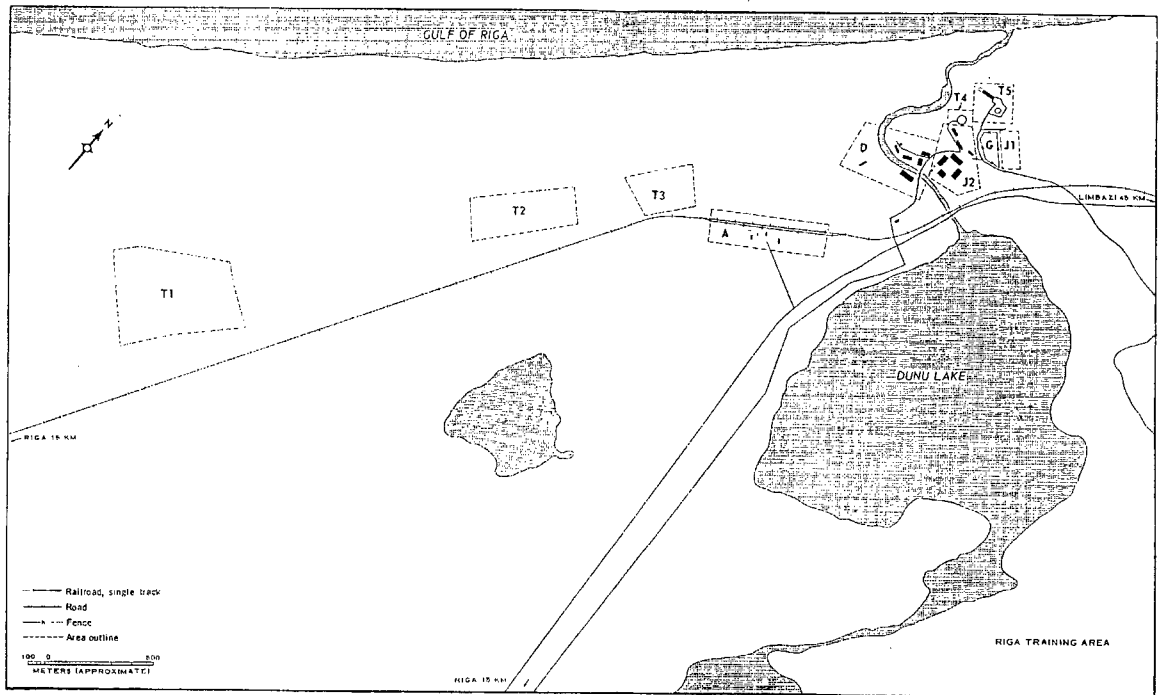


FIGURE 3. MILITARY INSTALLATION. Sketch compiled from [] July 1964 and [] August 1964.

NPIC J-8118 12/82

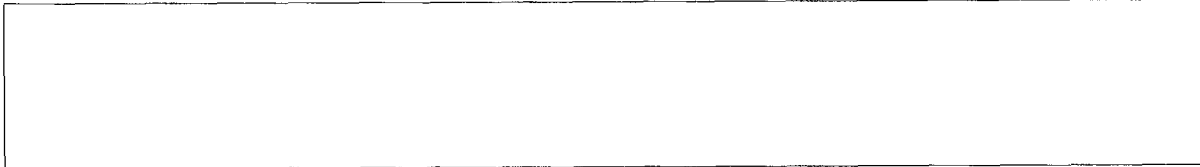
~~TOP SECRET RUFF~~

Handle Via
TALENT-KEYHOLE
Control System Only

TCS-80176/65

REFERENCES

PHOTOGRAPHY



MAPS OR CHARTS

US Air Target Chart, Series 200, Sheet 0153-17HL, 4th ed, Jul 63 (SECRET)

REQUIREMENT

DIAAP-1-15-64 (partial answer)

NPIC PROJECT

11904/64

- 6 -

~~TOP SECRET RUFF~~

Handle Via
TALENT-KEYHOLE
Control System Only

~~TOP SECRET~~

~~TOP SECRET~~