

Copy 1008
6 Pages

TCS-80151/65
February 1965



PHOTOGRAPHIC INTERPRETATION REPORT

SOVIET MILITARY ORDER OF BATTLE BALTIC MD

APPROVED FOR
RELEASE-HISTORICAL
COLLECTION
DIVISION-HR70-14
DATE: 05-10-2012



CIA



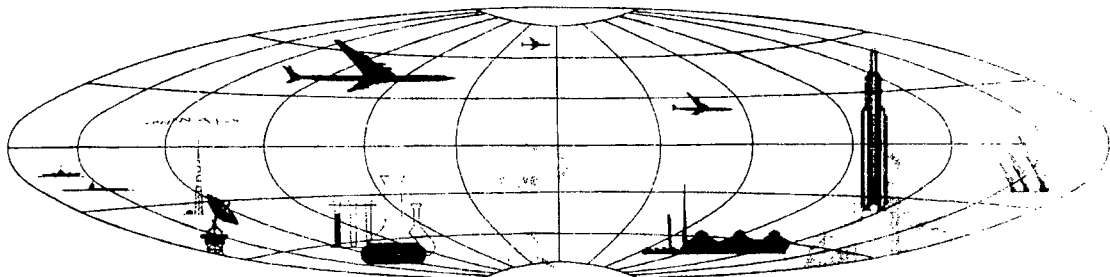
DIA

Handle Via **TALENT - KEYHOLE** Control Only

WARNING

This document contains classified information affecting the national security of the United States within the meaning of the espionage laws U. S. Code Title 18, Sections 793 and 794. The law prohibits its transmission or the revelation of its contents in any manner to an unauthorized person, as well as its use in any manner prejudicial to the safety or interest of the United States or for the benefit of any foreign government to the detriment of the United States. It is to be seen only by personnel especially indoctrinated and authorized to receive TALENT-KEYHOLE information. Its security must be maintained in accordance with KEYHOLE and TALENT regulations.

NATIONAL PHOTOGRAPHIC INTERPRETATION CENTER



~~TOP SECRET RUFF~~

TCS-801 11/65

PREFACE

This report is one in a series on Soviet Ground Force and Logistic installations being prepared for a DIA/CIA Panel. The series is being coordinated, published and disseminated by NPIC. The photographic analysis is being performed by the NPIC Photographic Analysis Group, the CIA Photographic Intelligence Division (NPIC), and the Production Center 1P1a (DIA). The photographic analysis for this particular report was performed by the Production Center 1P1a.

In the interest of uniformity, the titles and letter designators for the facilities observed at these installations are identical with those appearing in the project requirement. When a specific facility is not observed both its title and letter designator are omitted in the report.

Titles and letter designators for the various facilities are as follows: (A) railroad service, (B) road service, (C) landing strips, (D) administrative and troop housing areas, (E) storage areas, (F) ammunition storage areas, (G) POL storage areas, (H) other buildings and facilities, (J) equipment storage/maintenance areas, (K) athletic fields, (L) small arms firing ranges, (M) driver training areas, (N) tank/assault gun firing ranges, (P) flat trajectory firing ranges, (Q) artillery emplacements (batteries), (R) infantry or combined arms field training areas or courses, (S) special training facilities, (T) unidentified facilities or tracking activity.

- 1 -

~~TOP SECRET RUFF~~

CHERNYAKHOVSK TRAINING AREAS
(54-38N 021-49E)
CHERNYAKHOVSK, LATVISKAYA SSR, USSR
BAL TIC MD

BE No: See Summary

AL No:

JIB No:

COMOR No: 7A1170

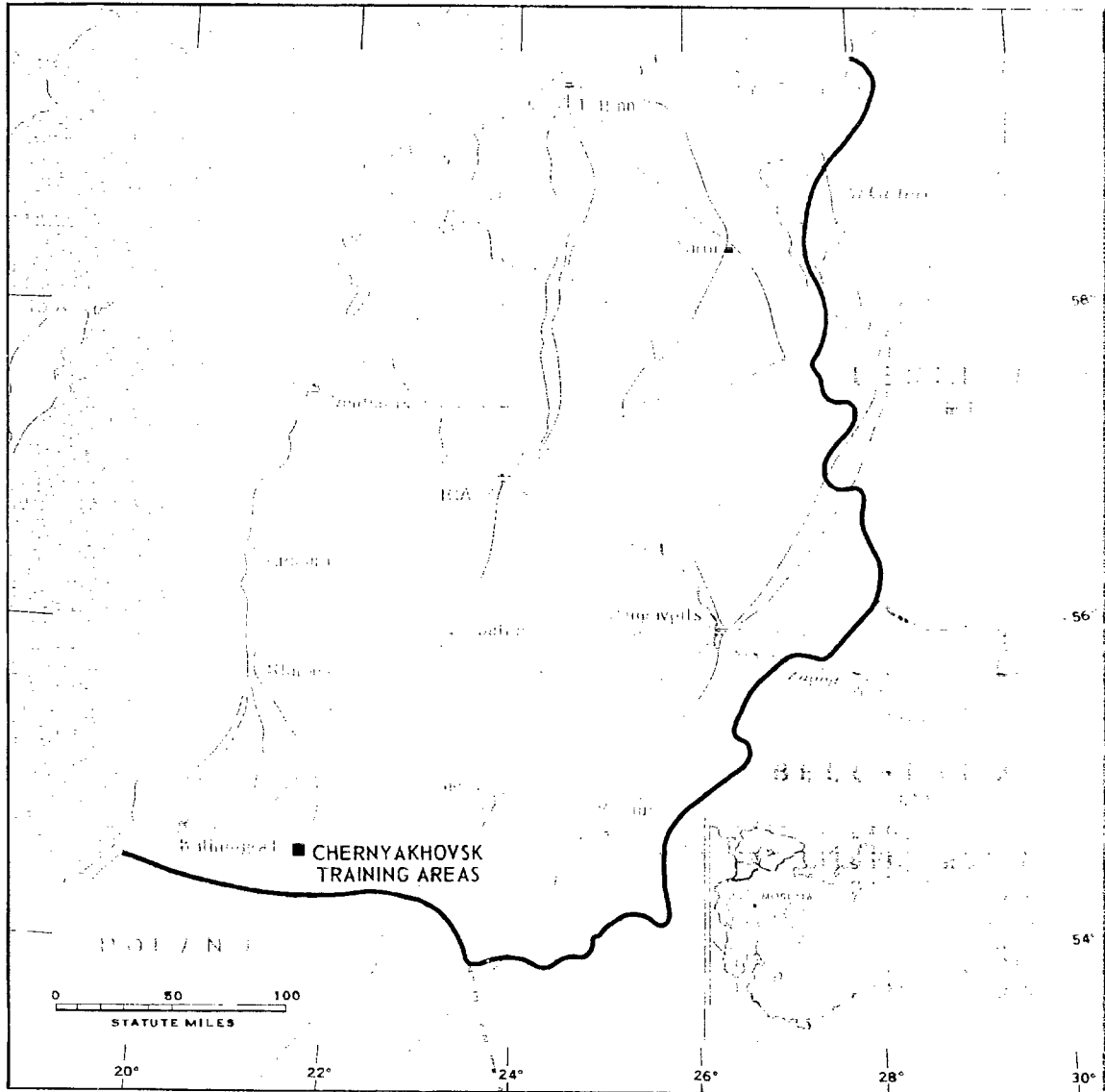


FIGURE 1. LOCATION OF CHERNYAKHOVSK TRAINING AREAS, CHERNYAKHOVSK, USSR.

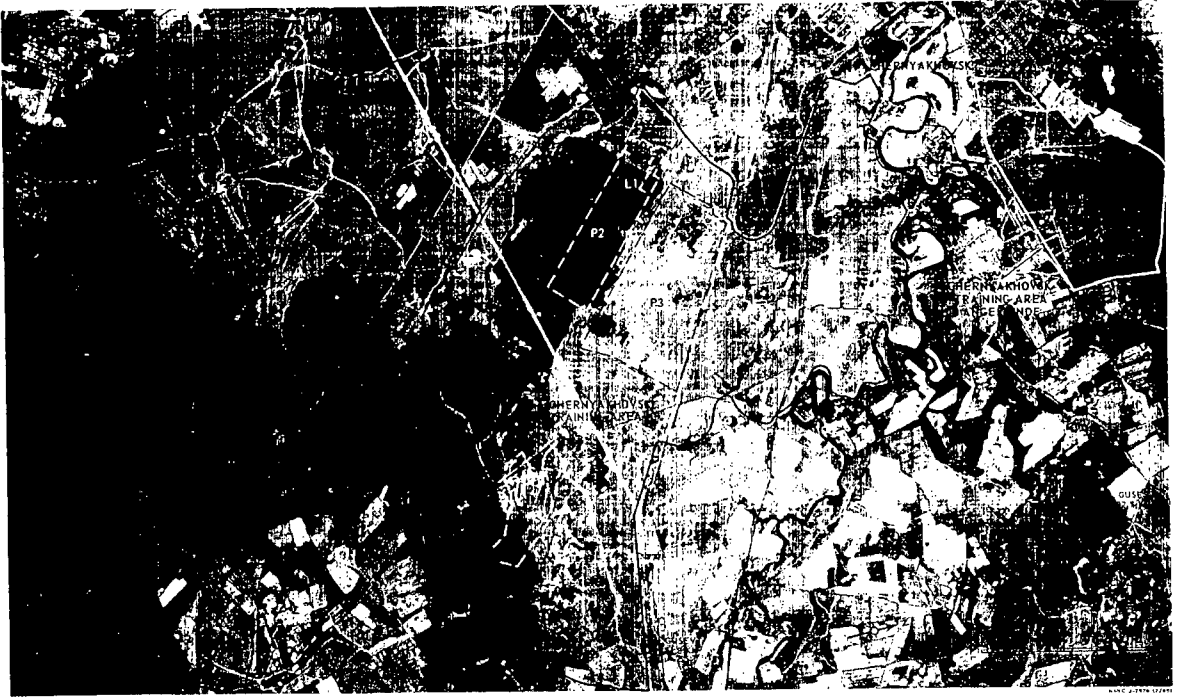


FIGURE 2. CHERNYAKHOVSK TRAINING AREA, CHERNYAKHOVSK, USSR, JULY 1964.

- 3 -

SUMMARY

Three training areas are located in the vicinity of Chernyakhovsk: Chernyakhovsk Training Area Angerlinde at 54-40N 021-54E [redacted], Chernyakhovsk Training Area I at 54-37N 021-51E [redacted] and Chernyakhovsk Training Area II at 54-35N 021-49E [redacted]. All 3 training areas (Figures 1 and 2) are associated with army barracks in the city of Chernyakhovsk.

Chernyakhovsk Training Area Angerlinde is located 5.7 kilometers (km) northeast of Chernyakhovsk. The training area covers approximately 1,250 acres and contains several flat-trajectory firing ranges, 2 small-arms firing ranges, and an ammunition storage area.

Chernyakhovsk Training Area I is adjacent to Chernyakhovsk on the southeast. The training area covers approximately 8,030 acres and contains a tank/assault-gun firing range, 2

flat-trajectory firing ranges, a small-arms firing range, a tracked-vehicle driver-training course, and an ammunition storage area.

Chernyakhovsk Training Area II is located 4 km south of Chernyakhovsk. The training area covers approximately 4,955 acres and contains 2 probable tank/assault-gun firing ranges, an ammunition storage area, an unidentified support area with several buildings, and unidentified trackage.

These installations are active and appear essentially unchanged on photography from 8 KEYHOLE missions between November 1962 and July 1964. The better quality of the more recent photography shows buildings which were not previously identifiable. The main portions of the training areas appear to be used primarily as maneuver areas. A railroad under construction is visible in areas I and II.

DESCRIPTION OF INSTALLATION

Railroad Service

The Chernyakhovsk-Gusev railroad passes through Chernyakhovsk Training Area I. A rail line under construction around Chernyakhovsk passes through Training Areas I and II.

Road Service

Chernyakhovsk-Gusev highway is adjacent to Chernyakhovsk Training Area Angerlinde. Roads connect Chernyakhovsk Training Areas I and II with the city of Chernyakhovsk.

Aircraft Landing Strips

All 3 training areas have ready access to the Chernyakhovsk Airfield which is located immediately southwest of Chernyakhovsk and adjacent to Training Area I.

Ammunition Storage Areas

Area F1 contains 2 explosives storage buildings measuring 100 by 40 feet each, and 3 other explosives storage buildings measuring 120 by 50 feet, 50 by 20 feet, and approximately 70 by 25 feet.

Area F2 contains 4 explosives storage buildings measuring 90 by 30 feet, 70 by 30 feet, 50 by 20 feet, and 45 by 20 feet, and a support building measuring 10 by 10 feet.

Area F3 contains 4 explosives storage buildings, measuring 55 by 40 feet, 35 by 25 feet, 25 by 25 feet, and 20 by 20 feet.

Small-Arms Firing Ranges

Area L1 is a probable firing range measuring 525 by 275 feet. This may possibly be

used for testing or subcaliber sighting-in.

Area L2 is a firing range measuring 975 by 200 feet. A target butt was observed at this range.

Area L3 is a possible pistol or submachine-gun firing range measuring 350 by 50 feet. Target butts were observed at this range.

Driver-Training Area

Area M is a tracked-vehicle driver-training course.

Tank/Assault-Gun Firing Ranges

Area N1 is a 4,500-foot firing range with 10 lanes, each 1,100 feet long, 1 moving target, 6 probable fixed targets, and 2 other probable targets. Only 6 lanes appear operational. Three control towers and approximately 10 support buildings are visible. A secured support area with low structures measuring 70 by 60 feet is located 150 feet south of the firing line. This may be an ammunition storage area.

Area N2 was formerly a tank/assault-gun firing range and appears abandoned. An unidentified support area approximately 1,100

feet southwest of the center of the firing line contains 2 buildings, each 55 by 20 feet.

Area N3 is a tank/assault-gun firing range which appears to be infrequently used.

Flat-Trajectory Firing Ranges

Area P1 is a 5,100-foot range with 8 to 12 moving targets. Seven control points are visible. Five other flat-trajectory firing ranges are superimposed on Area P1 and/or each other and occupy most of the western two-thirds of Chernyakhovsk Training Area Angerlinde. Some of these ranges appear abandoned.

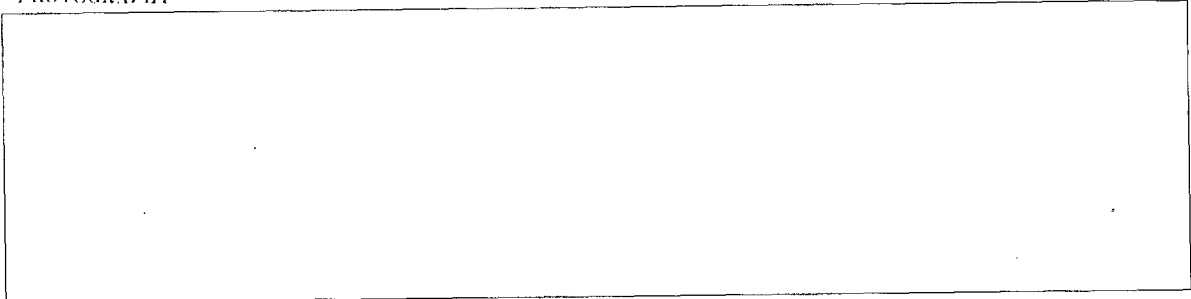
Area P2 is a 1,400-foot range, probably with 9 fixed targets. The targets are not discernible, but 9 firing points or control points are visible. This range may not be in use.

Area P3 is a 1,400-foot range with approximately 8 moving targets and 13, possibly 14, firing points. There are no fixed targets discernible and the range appears inactive.



REFERENCES

PHOTOGRAPHY



MAPS OR CHARTS

US Air Target Chart, Series 200, Sheet 0168-6HL, 2d ed, Aug 62 (SECRET)

DOCUMENTS



REQUIREMENT

DIAAP-1-15-64 (partial answer)

NPIC PROJECT

11904/64

~~TOP SECRET~~

~~TOP SECRET~~