

HR70-14

~~TOP SECRET~~

Copy  
6 Pages

TCS-80124/65  
January 1965

PHOTOGRAPHIC INTERPRETATION REPORT

APPROVED FOR RELEASE -  
HISTORICAL COLLECTION  
DIVISION DATE: 06-18-2012

# SOVIET MILITARY ORDER OF BATTLE KIYEV MD



CIA



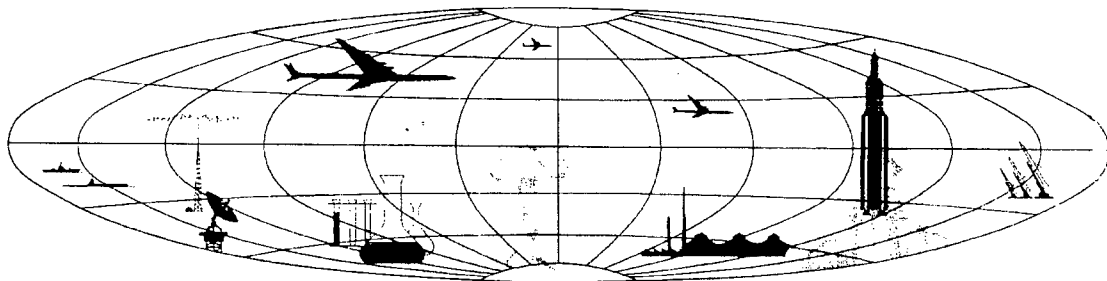
DIA

Handle Via **TALENT - KEYHOLE** Control Only

WARNING

This document contains classified information affecting the national security of the United States within the meaning of the espionage laws U. S. Code Title 18, Sections 793 and 794. The law prohibits its transmission or the revelation of its contents in any manner to an unauthorized person, as well as its use in any manner prejudicial to the safety or interest of the United States or for the benefit of any foreign government to the detriment of the United States. It is to be seen only by personnel especially indoctrinated and authorized to receive TALENT-KEYHOLE information. Its security must be maintained in accordance with KEYHOLE and TALENT regulations.

NATIONAL PHOTOGRAPHIC INTERPRETATION CENTER



~~TOP SECRET~~

GROUP 1  
Excluded from automatic  
downgrading and declassification

PREFACE

This report is one in a series on Soviet Ground Force and Logistic installations being prepared for a DIA/CIA Panel. The series is being coordinated, published and disseminated by NPIC. The photographic analysis is being performed by the NPIC Photographic Analysis Group, the CIA Photographic Intelligence Division (NPIC), and the Production Center IP1a (DIA). The photographic analysis for this particular report was performed by the NPIC Photographic Analysis Group.

In the interest of uniformity, the titles and letter designators for the facilities observed at these installations are identical with those appearing in the project requirement. When a specific facility is not observed both its title and letter designator are omitted in the report.

Titles and letter designators for the various facilities are as follows: (A) railroad service, (B) road service, (C) landing strips, (D) administrative and troop housing areas, (E) storage areas, (F) ammunition storage areas, (G) POL storage areas, (H) other buildings and facilities, (J) equipment storage/maintenance areas, (K) athletic fields, (L) small arms firing ranges, (M) driver training areas, (N) tank/assault gun firing ranges, (P) flat trajectory firing ranges, (Q) artillery emplacements (batteries), (R) infantry or combined arms field training area or courses, (S) special training facilities, (T) unidentified facilities or tracking activity.

BARRACKS AND BIVOUAC AREA  
(47-53N 033-15E)  
KRIVOY ROG, DNEPROPETROVSKAYA OBLAST', USSR  
KIYEV MD

BE No:

AL No:

COMOR No:

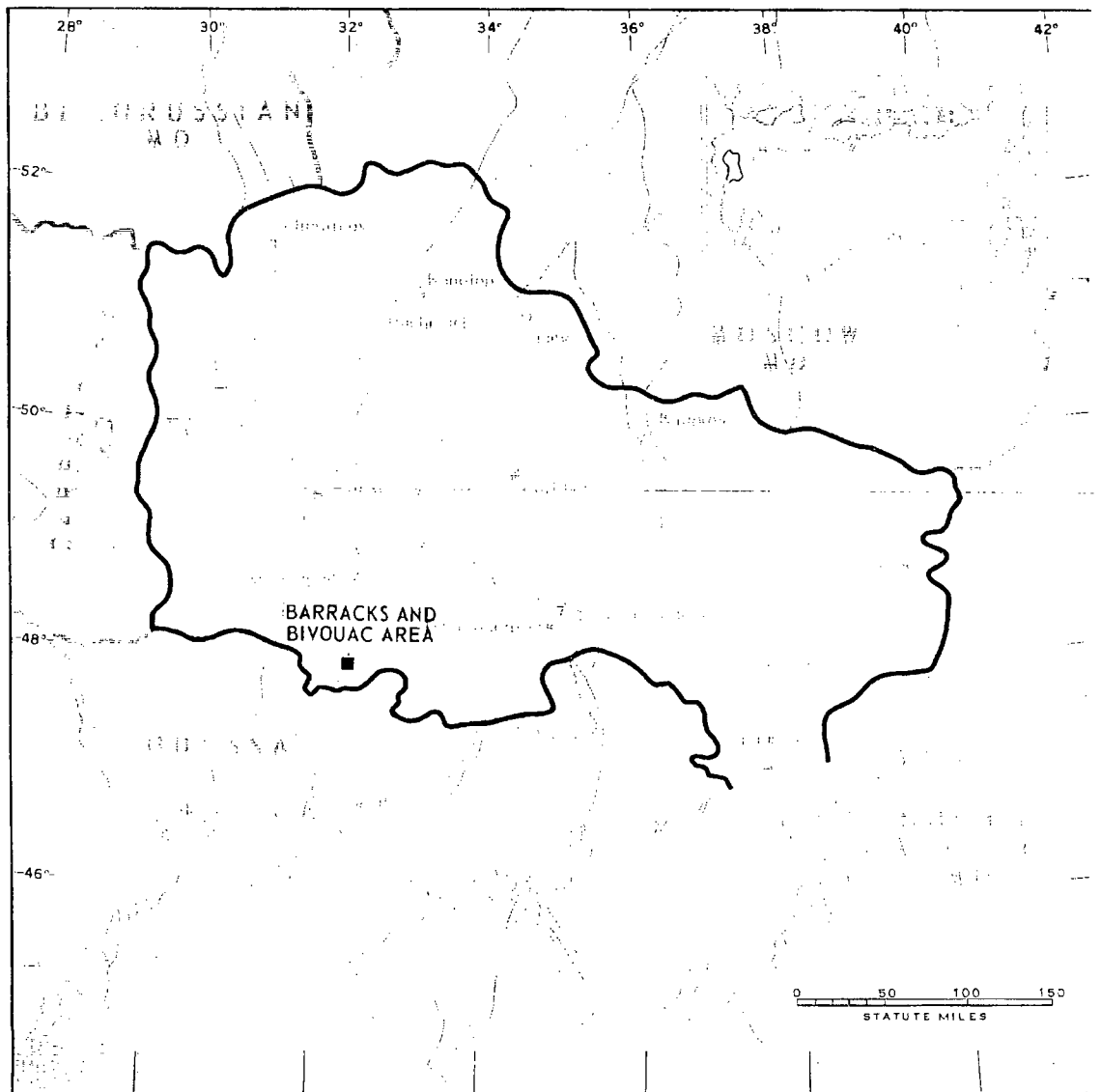


FIGURE 1. LOCATION OF BARRACKS AND BIVOUAC AREA.

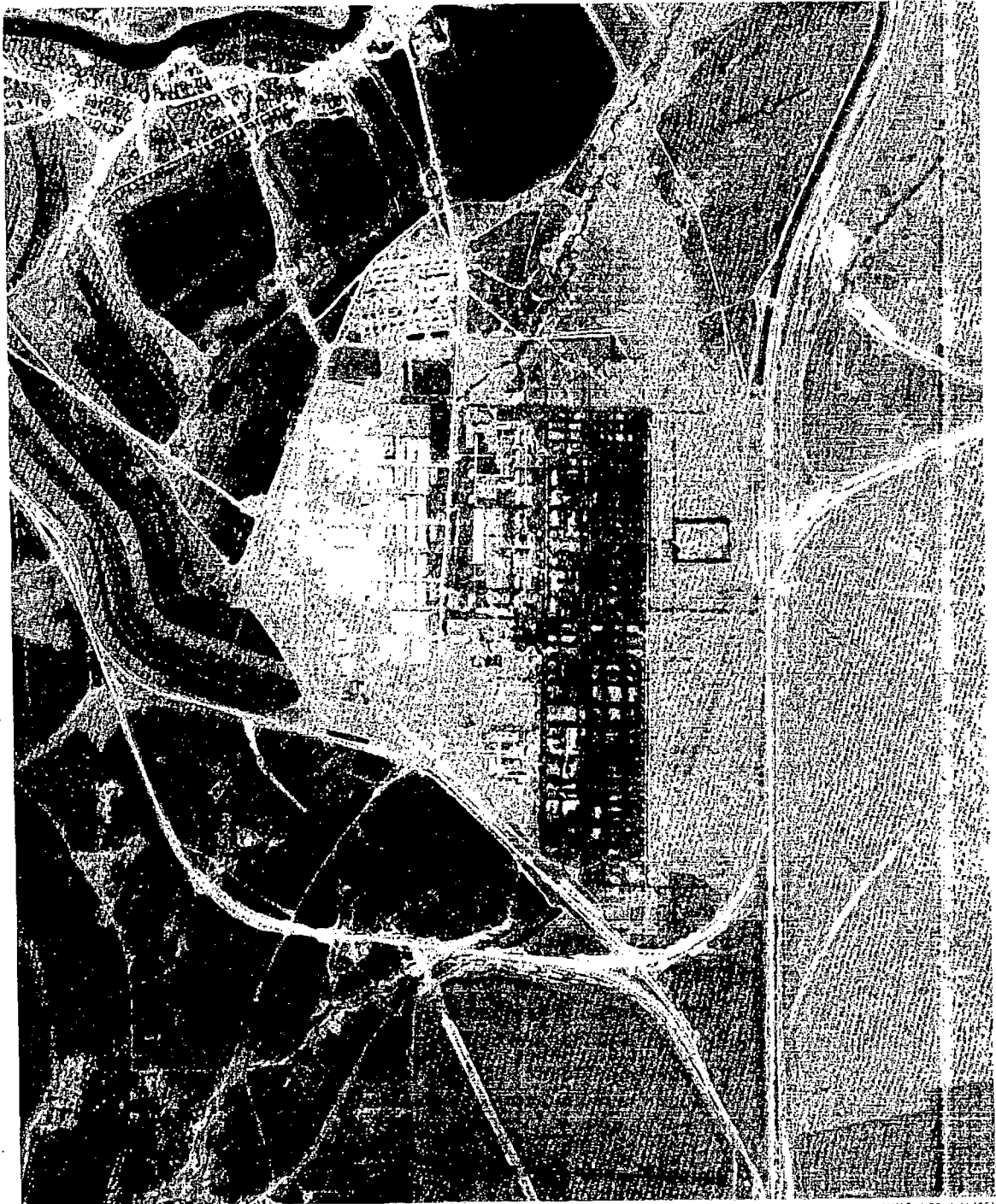


FIGURE 2. BARRACKS AND BIVOUAC AREA, KRIVOY ROG, USSR, JUNE 1964.

NPIC J-78-1 (1/765)

SUMMARY

A barracks and adjoining bivouac area is located 8 kilometers (km) west of Krivoy Rog (Figure 1). These facilities provide administrative, billeting, and other support for a large training area located immediately south.

The installation covers approximately 1,155 acres and contains 2 administration buildings, 30 probable barracks, 19 barracks-type buildings, 17 storage buildings, 49 support buildings, 12 vehicle sheds, 3 equipment storage/maintenance buildings, 7 possible ammunition storage buildings, an athletic field, one AAA battery (probably abandoned), a bivouac area with 24 permanent

buildings (2 administration, one storage, 21 support) and extensive tent areas served by an elaborate network of roads (Figures 2 and 3).

The area was covered by 10 KEYHOLE missions from December 1961 to August 1964. Comparative analysis revealed that all buildings were probably constructed prior to August 1962. The barracks and equipment storage/maintenance areas appeared to be utilized year round; however, the other facilities are probably utilized primarily during training activities in the large adjacent training area.

DESCRIPTION OF INSTALLATION

Railroad Service

Dolinskaya-Krivoy Rog rail line forms the southern boundary of the area. Rail spurs from this line form the southwest and northwest boundary.

Road Service

The area is connected to Krivoy Rog by a probable all-weather secondary road.

Administrative and Troop Housing Areas

Area D1 contains 2 administration buildings, 30 probable barracks, 2 storage buildings, and 10 support buildings. A greater amount of track activity in this area may indicate permanent quarters for year-round occupancy.

Area D2 contains 19 barracks-type buildings and 14 support buildings.

Area D3 contains 2 administration buildings, 1 storage building, 21 support buildings, and a bivouac area.

General Storage Area

Area E contains 15 storage buildings and 9 support buildings.

Ammunition Storage Area

Area F contains 7 possible ammunition storage buildings.

Equipment Storage/Maintenance Areas

Area J1 contains 14 support buildings and 12 vehicle sheds (six 245 by 50 feet and six 185 by 55 feet). Three rows of equipment or vehicles were observed in December 1963; 4 rows in February 1964; 6 rows in June 1964; and 5 possible rows in August 1962.

Area J2 contains three equipment storage/maintenance buildings (one 185 by 55 feet, two 125 by 50 feet).

Athletic Field

Area K is an athletic field with 2 support buildings.

Artillery Emplacement

Area Q is an AAA emplacement with 5 positions and central control. This emplacement was present on December 1961 coverage, but is now probably abandoned.

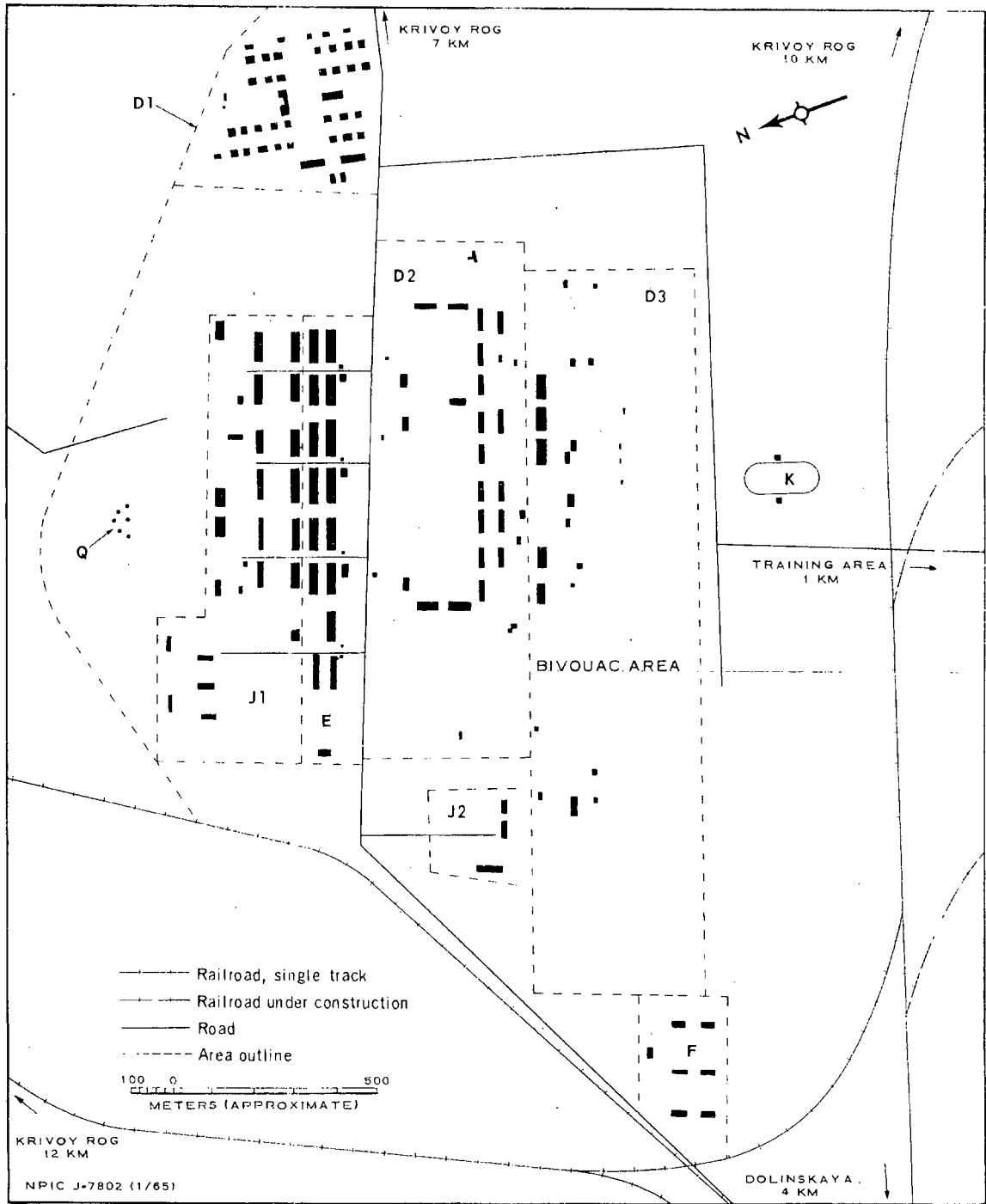


FIGURE 3. BARRACKS AND BIVOUAC AREA. Sketch compiled from [redacted] June 1964.

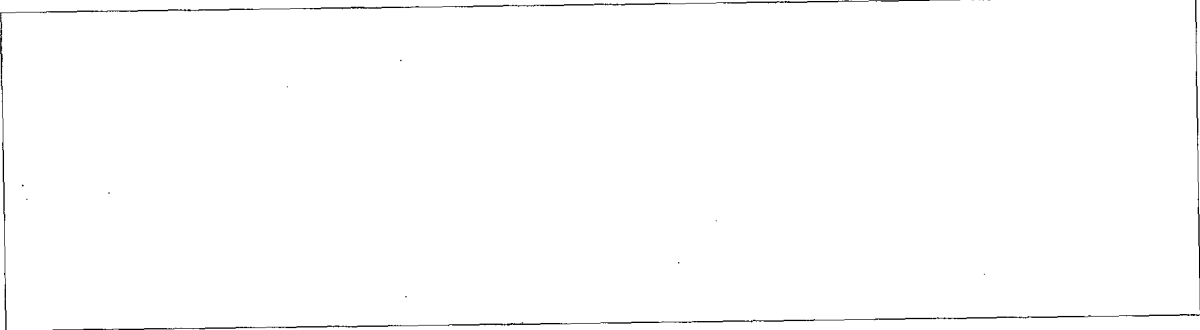
~~TOP SECRET RUFF~~

Handle Via  
TALENT-KEYHOLE  
Control System Only

TCS-80124 65

REFERENCES

PHOTOGRAPHY



MAPS OR CHARTS

US Air Target Chart, Series 200, Sheet 0250-4HL, 2d ed, May 63 (SECRET)

US Air Target Mosaic, Series 50, 0250-4/4MA, 1st ed, Apr 59 (SECRET)

REQUIREMENT

C-RR4-81,614 (partial answer)

NPIC PROJECT

11627/64

- 6 -

~~TOP SECRET RUFF~~

Handle Via  
TALENT-KEYHOLE  
Control System Only

~~TOP SECRET~~

~~TOP SECRET~~