

HR70-14

~~TOP SECRET~~

Copy 107  
7 Pages

January 1965

PHOTOGRAPHIC INTERPRETATION REPORT

APPROVED FOR  
RELEASE-HISTORICAL  
COLLECTION  
DIVISION-HR70-14  
DATE: 05-11-2012

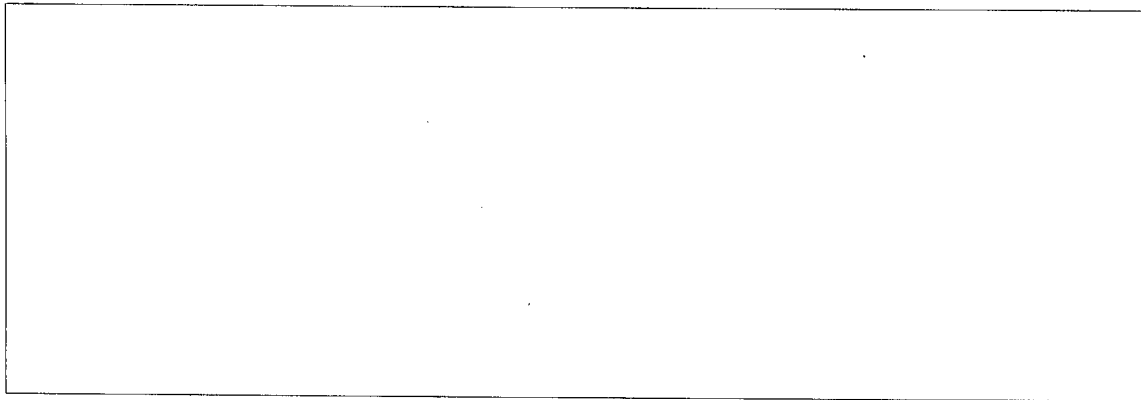
# SOVIET MILITARY ORDER OF BATTLE KIYEV MD



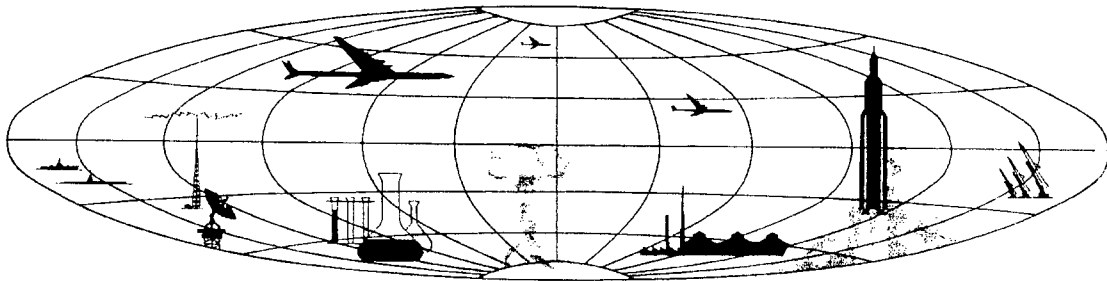
CIA



DIA



NATIONAL PHOTOGRAPHIC INTERPRETATION CENTER



~~TOP SECRET~~

GROUP 1  
Excluded from automatic  
downgrading and declassification



PREFACE

This report is one in a series on Soviet Ground Force and Logistic installations being prepared for a DIA/CIA Panel. The series is being coordinated, published and disseminated by NPIC. The photographic analysis is being performed by the NPIC Photographic Analysis Group, the CIA Photographic Intelligence Division (NPIC), and the Production Center 1P1a (DIA). The photographic analysis for this particular report was performed by the NPIC Photographic Analysis Group.

In the interest of uniformity, the titles and letter designators for the facilities observed at these installations are identical with those appearing in the project requirement. When a specific facility is not observed both its title and letter designator are omitted in the report.

Titles and letter designators for the various facilities are as follows: (A) railroad service, (B) road service, (C) landing strips, (D) administrative and troop housing areas, (E) storage areas, (F) ammunition storage areas, (G) POL storage areas, (H) other buildings and facilities, (J) equipment storage/maintenance areas, (K) athletic fields, (L) small arms firing ranges, (M) driver training areas, (N) tank/assault gun firing ranges, (P) flat trajectory firing ranges, (Q) artillery emplacements (batteries), (R) infantry or combined arms field training area or courses, (S) special training facilities, (T) unidentified facilities or tracking activity.





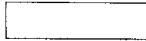
SELECTED MILITARY INSTALLATIONS

(50-25N 030-28E)

KIYEV, KIYEVSKAYA OBLAST, USSR

BE No: See Text

AL No:



COMOR No: See Text

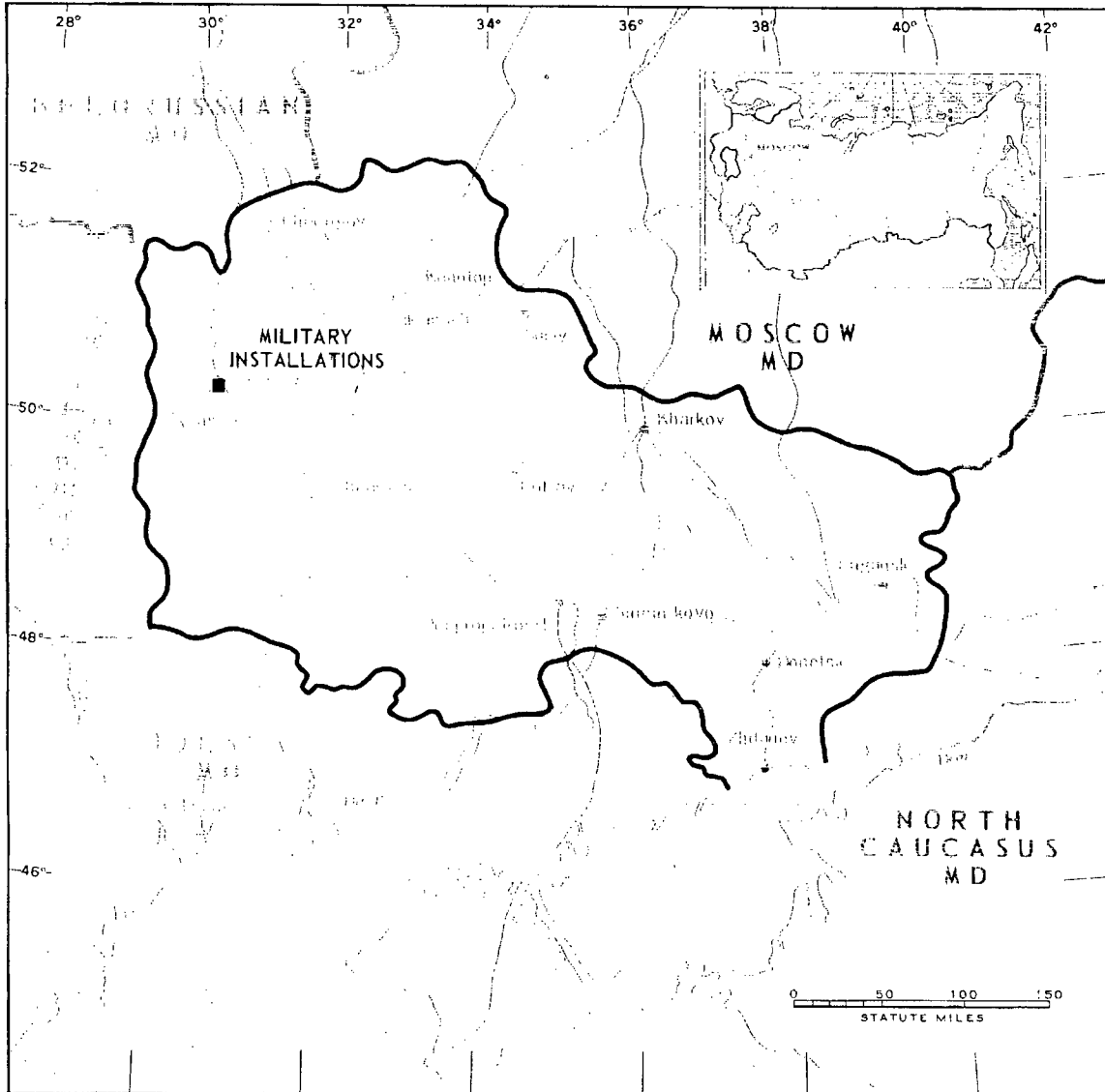


FIGURE 1. LOCATION OF SELECTED MILITARY INSTALLATIONS, KIYEV.



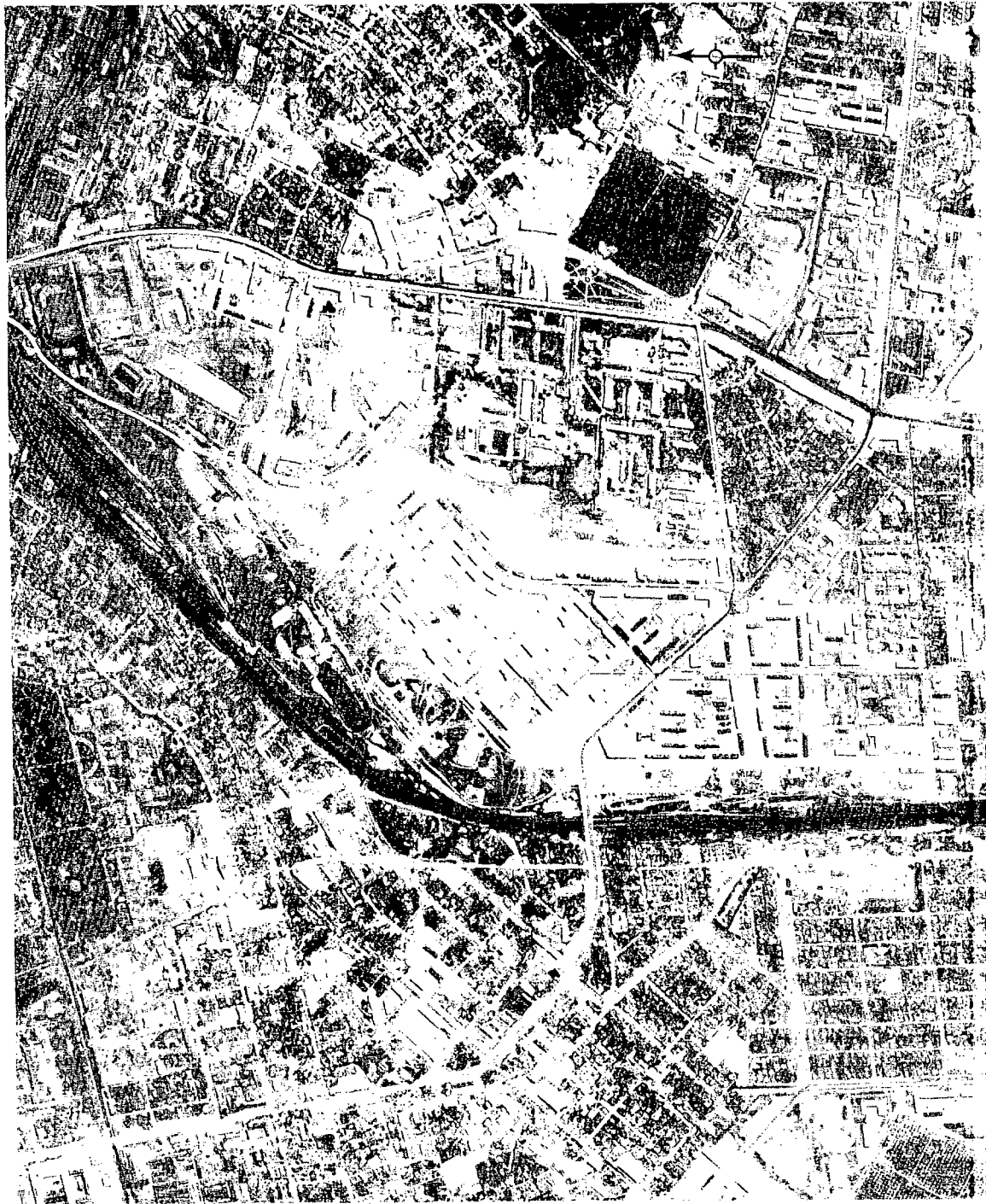


FIGURE 2. SELECTED MILITARY INSTALLATIONS, KYIEV, USSR, APRIL 1964.

REF ID: A66666





SUMMARY

Four adjoining military installations are located in the center of Kiyev, USSR: Kiyev Headquarters Kiyev Military District [redacted] [redacted] Kiyev Army Barracks 1st of May [redacted] [redacted] Kiyev Army School 1st of May [redacted] [redacted] and a probable Soviet Air Force aviation school (Figures 1, 2, and 3).

Kiyev Headquarters Kiyev Military District covers approximately 120 acres and contains 3 administration buildings, a school/administration building, 12 barracks, 7 storage buildings, 16 support buildings, 3 small-arms ranges, and a vehicle park with 2 vehicle sheds, 2 vehicle storage/maintenance buildings, and 5 support buildings. A separately secured support area with 9 support buildings and an athletic field is located northwest of the administration buildings.

Kiyev Army Barracks 1st of May covers approximately 48 acres and contains a school/administration building, 2 administration buildings, 12 barracks, 16 support buildings, and a secured vehicle park with a vehicle shed and a support building.

Kiyev Army School 1st of May covers ap-

proximately 140 acres and contains 2 school/administration buildings, 3 administration buildings, 7 barracks, 2 storage buildings, 34 support buildings, 2 athletic fields, and a secured vehicle park with a vehicle shed and 2 vehicle storage/maintenance buildings.

A probable Soviet Air Force aviation school covers approximately 120 acres and contains 3 school/administration buildings, 3 administration buildings, 7 barracks, 5 storage buildings, 16 support buildings, an athletic field, and a vehicle park with 3 vehicle sheds, a vehicle/maintenance building, and 3 support buildings.

These 4 installations were covered on 15 KEYHOLE missions between June 1961 and August 1964 and they appeared active on all coverage. Changes during this period include the addition of 9 support buildings in Area D2 and 1 barracks in each of Areas D1, D2, and D3. One barracks in Area D2, 3 support buildings in Area D3, and a support building in Area D4 were under construction on photography of August 1964. In Area J3 a vehicle storage/maintenance building and a vehicle shed were first observed in August 1963. Vehicles were observed in each of 4 secured vehicle parks on photography of April 1964.

DESCRIPTION OF INSTALLATION

Railroad Service

The Odessa-Kiyev rail line is adjacent to the installation on the north.

Road Service

The installations are served by Kiyev urban streets.

Administration and Troop Housing Areas

Area D1 contains a multistory U-shaped ad-

ministration building, 2 single-story U-shaped administration buildings, a multistory school/administration building, 12 multistory barracks, 7 storage buildings, and 16 support buildings. One of the barracks was constructed between December 1961 and August 1962. Most of the support buildings were first observed on larger scale photography of April 1964.

Area D2 contains a multistory U-shaped school/administration building, 2 multistory U-shaped administration buildings, 12 multistory



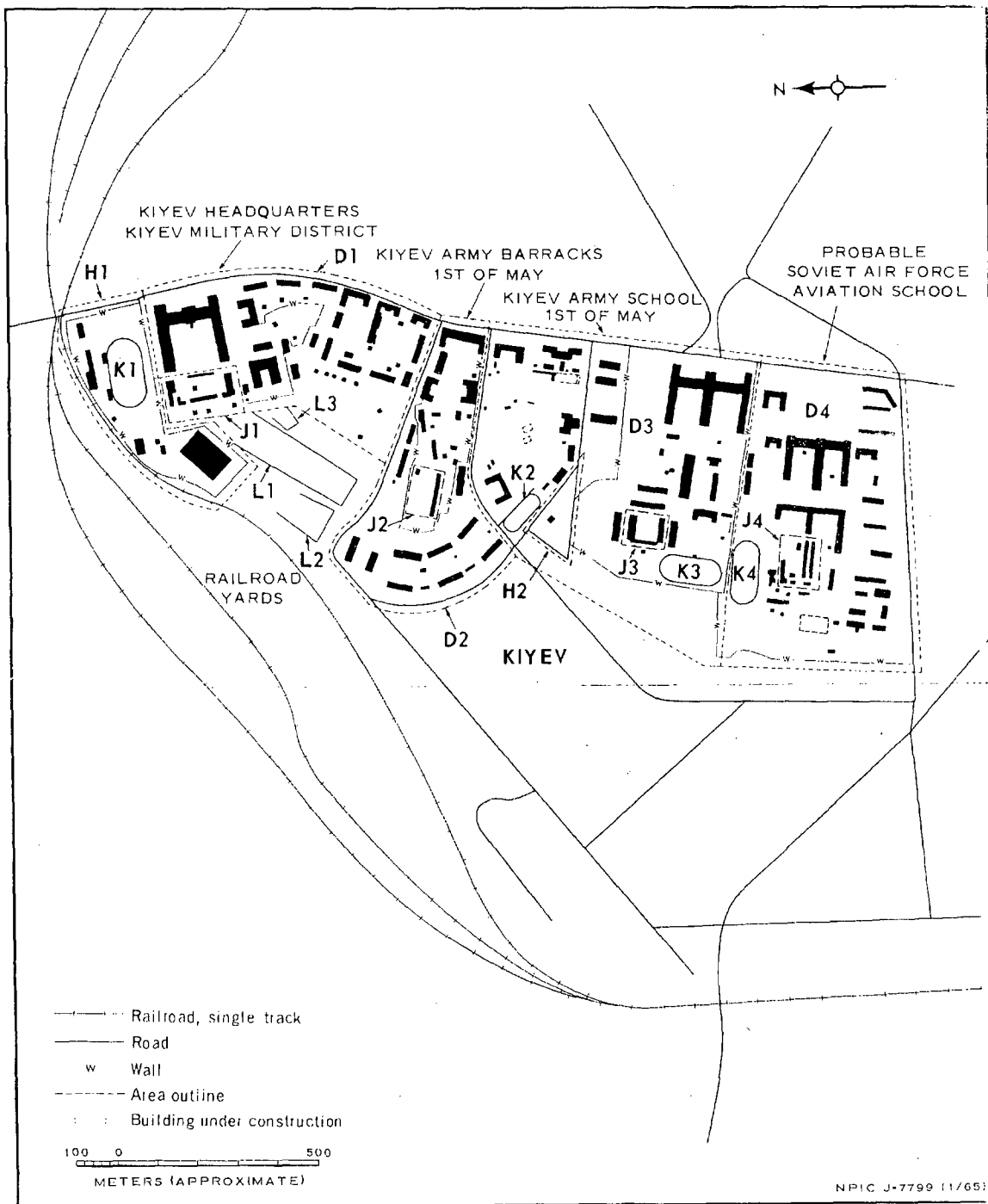


FIGURE 3. SELECTED MILITARY INSTALLATIONS, KIYEV, USSR. Sketch compiled from August 1964.

barracks, and 16 support buildings. One of the barracks was constructed between December 1961 and August 1962. Nine of the support buildings were first observed on August 1962 photography. One of the barracks was first observed on August 1964 photography.

Area D3 contains a multistory E-shaped school/administration building, a multistory school/administration building, 3 multistory administration buildings, 2 storage buildings, 34 support buildings (3 under construction), 2 multistory U-shaped barracks, and 5 multistory barracks. One of the barracks was constructed between December 1961 and August 1962. The 3 support buildings under construction were first observed on photography of August 1964.

Area D4 contains 2 multistory E-shaped school/administration buildings, a multistory school/administration building, 3 multistory U-shaped administration buildings, 7 multistory barracks, 5 storage buildings, 15 support buildings, and a large support building under construction which was first observed on photography of August 1964.

#### POL Storage Areas

A POL storage depot is located at 50-27N 030-29E and contains 15 medium vertical tanks and 6 small horizontal tanks. Another area with 42 small horizontal and 5 medium vertical tanks is located at 50-26N 030-23E.

#### Other Buildings and Facilities

Area H1 contains 9 support buildings. The large building in this area is a probable auditorium/gymnasium, and the other buildings are probably for recreation.

Area H2 contains a possible communications building.

#### Equipment Storage/Maintenance Areas

Area J1 contains 2 vehicle sheds measuring 300 by 30 feet each, a vehicle storage/maintenance building measuring 240 by 60 feet with a 90- by 35-foot wing, a vehicle storage/maintenance building measuring 120 by 60 feet with a 120- by 30-foot extension, and 5 support buildings. This area appears active on all photographic coverage and vehicles are present on photography of April 1964.

Area J2 contains one 390- by 45-foot vehicle shed and a support building. This area appeared active on all coverage and vehicles were observed on photography of April 1964.

Area J3 contains one 180- by 30-foot vehicle shed and two 240- by 75-foot vehicle storage/maintenance buildings. One of the vehicle storage/maintenance buildings and the vehicle shed were first observed on photography of August 1963. Vehicles were present on the April 1964 coverage.

Area J4 contains 2 vehicle sheds measuring 390 by 30 feet each, a vehicle shed measuring 150 by 35 feet, a vehicle storage/maintenance building measuring 270 by 45 feet with a 55- by 45-foot wing, and 3 support buildings. This area appeared active on all coverage and vehicles were present on April 1964 photography.

#### Athletic Fields

Areas K1 - K4 are athletic fields. All 4 of these fields contained light scarring on photography of April 1964.

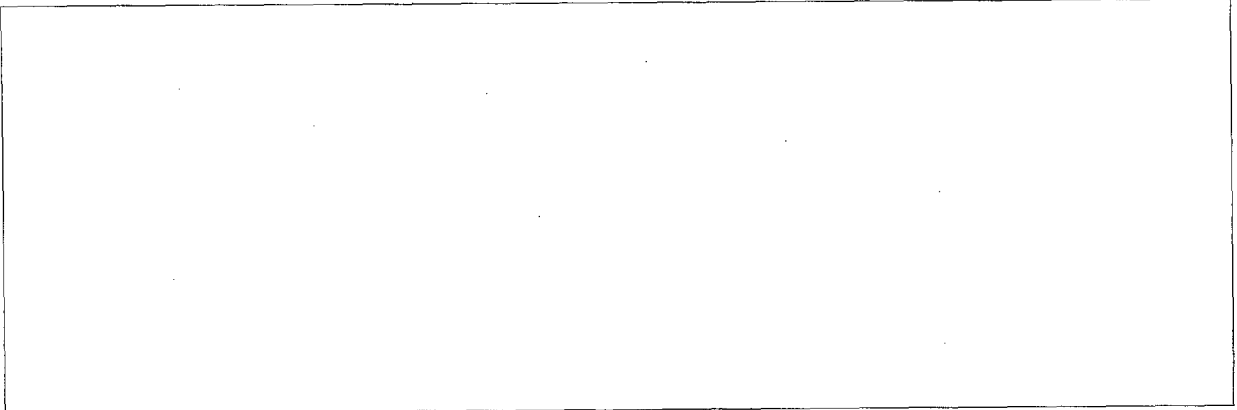
#### Small-Arms Firing Ranges

Areas L1, L2 and L3 are small-arms firing ranges measuring 1,320 by 320 feet, 540 by 300 feet, and 210 by 150 feet, respectively. Light activity has been observed in Area L1; however, no activity has been observed in the other two areas.



REFERENCES

PHOTOGRAPHY



MAPS OR CHARTS



US Air Target Chart, Series 200, Sheet 0233-0HL, 3d ed, May 62 (SECRET)

DOCUMENTS



Army. PAM 50-63, *Military Installations*. Kiev, Apr 63 (TOP SECRET RUFF)

REQUIREMENT

C-RR4-81,614 (partial answer)

NPIC PROJECT

11627, 64





~~TOP SECRET~~

~~TOP SECRET~~