



PHOTOGRAPHIC INTERPRETATION REPORT

APPROVED FOR RELEASE -
HISTORICAL COLLECTION
DIVISION DATE: 06-18-2012

SOVIET MILITARY ORDER OF BATTLE KIYEV MD



CIA



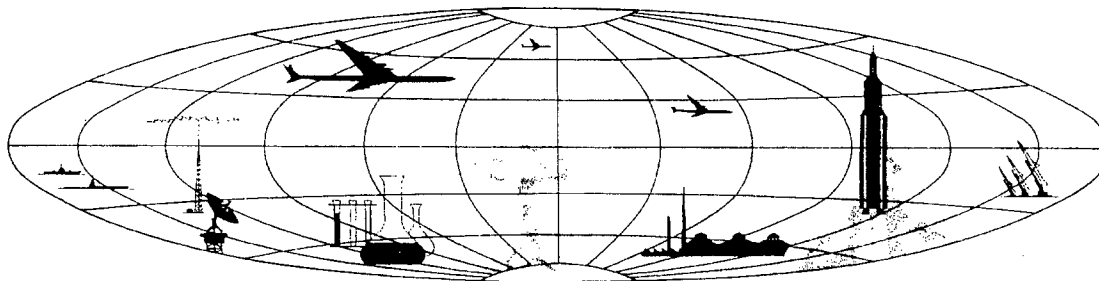
DIA

Handle Via **TALENT - KEYHOLE** Control Only

WARNING

This document contains classified information affecting the national security of the United States within the meaning of the espionage laws U. S. Code Title 18, Sections 793 and 794. The law prohibits its transmission or the revelation of its contents in any manner to an unauthorized person, as well as its use in any manner prejudicial to the safety or interest of the United States or for the benefit of any foreign government to the detriment of the United States. It is to be seen only by personnel especially indoctrinated and authorized to receive TALENT-KEYHOLE information. Its security must be maintained in accordance with KEYHOLE and TALENT regulations.

NATIONAL PHOTOGRAPHIC INTERPRETATION CENTER



~~TOP SECRET RUFF~~

TCS-80032/65

PREFACE

This report is one in a series on Soviet Ground Force and Logistic installations being prepared for a DIA/CIA Panel. The series is being coordinated, published and disseminated by NPIC. The photographic analysis is being performed by the NPIC Photographic Analysis Group, the CIA Photographic Intelligence Division (NPIC), and the Production Center 1P1a (DIA). The photographic analysis for this particular report was performed by the NPIC Photographic Analysis Group.

In the interest of uniformity, the titles and letter designators for the facilities observed at these installations are identical with those appearing in the project requirement. When a specific facility is not observed both its title and letter designator are omitted in the report.

Titles and letter designators for the various facilities are as follows: (A) railroad service, (B) road service, (C) landing strips, (D) administrative and troop housing areas, (E) storage areas, (F) ammunition storage areas, (G) POL storage areas, (H) other buildings and facilities, (J) equipment storage/maintenance areas, (K) athletic fields, (L) small arms firing ranges, (M) driver training areas, (N) tank/assault gun firing ranges, (P) flat trajectory firing ranges, (Q) artillery emplacements (batteries), (R) infantry or combined arms field training area or courses, (S) special training facilities, (T) unidentified facilities or tracking activity.

~~TOP SECRET RUFF~~

PROBABLE AMMUNITION STORAGE AREA

(50-03N 033-02E)

LUBNY, POLTAVSKAYA OBLAST, USSR

KIYEV MD

BE No:

AL No:



COMOR No:

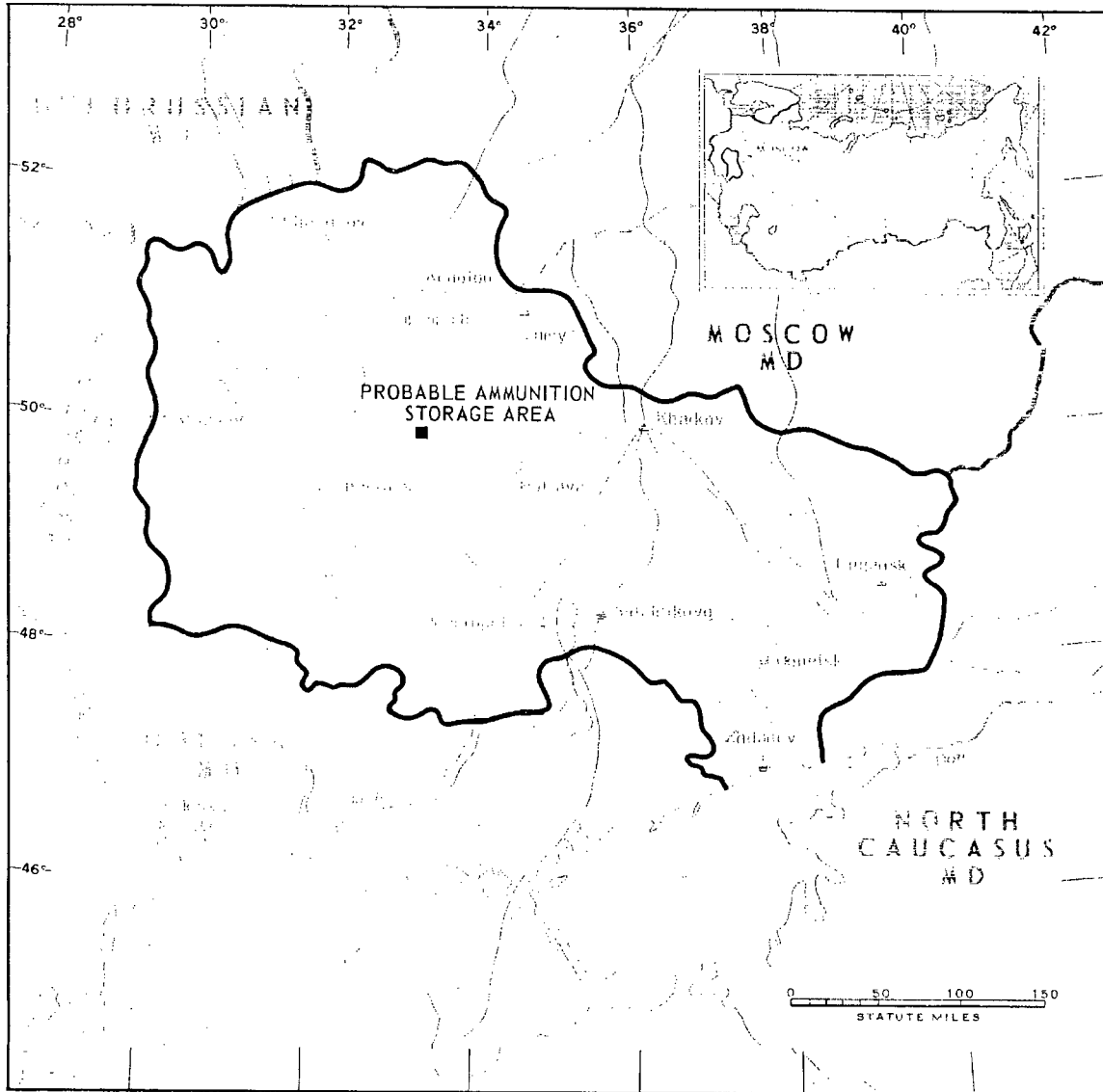


FIGURE 1. LOCATION OF PROBABLE AMMUNITION STORAGE AREA.

NPIC J-6483 (1/65)

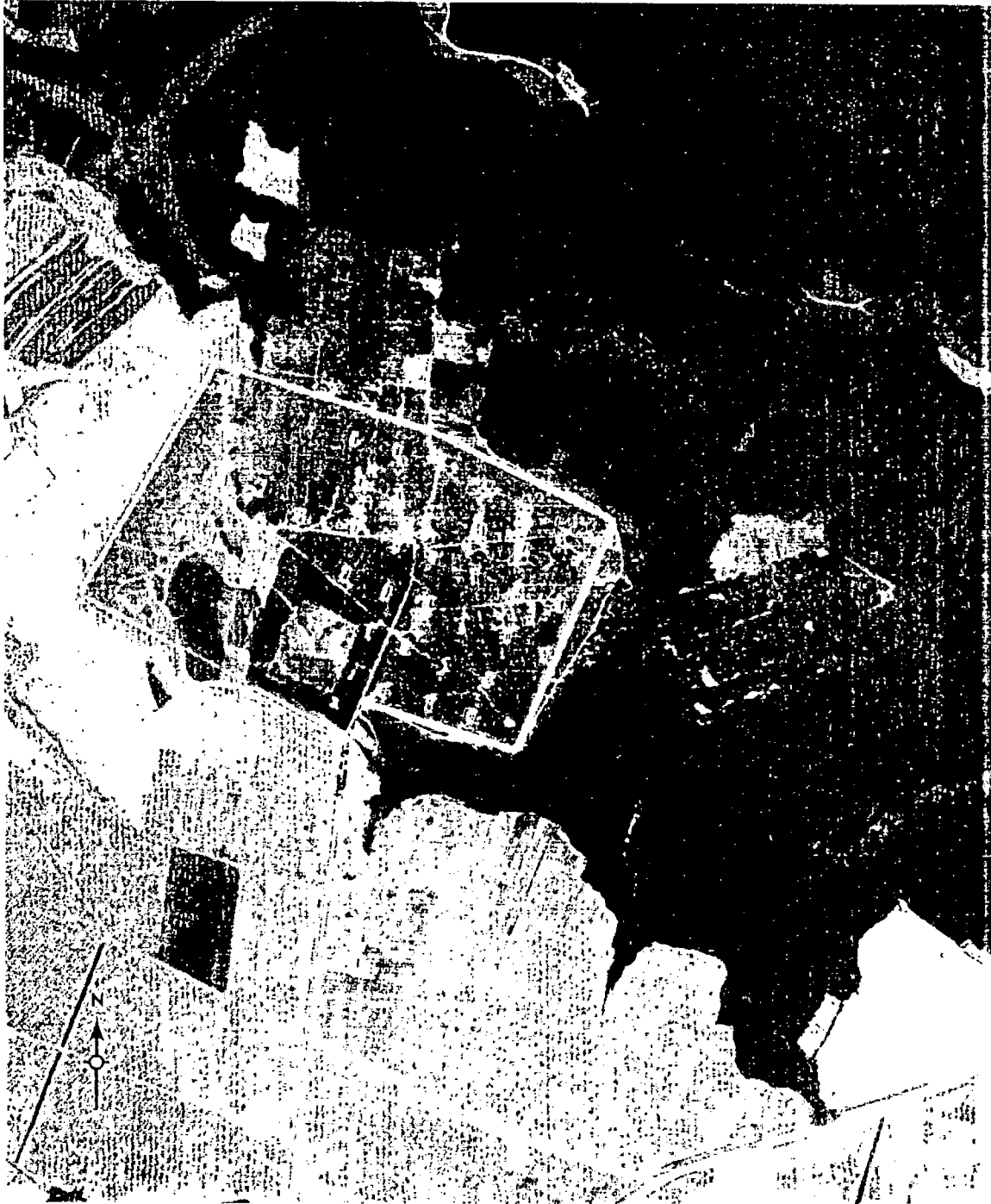


FIGURE 2. PROBABLE AMMUNITION STORAGE AREA, LUBNY, USSR, JUNE 1964.

NPIC 2-6484 1176

SUMMARY

A probable ammunition storage area is located 4.8 kilometers (km) northeast of Lubny (Figure 1). The installation covers approximately 250 acres and contains 48 probable ammunition storage buildings, 7 support buildings, and 2 small-arms firing ranges (Figures

2 and 3).

The installation was covered by 9 KEYHOLE missions between June 1961 and October 1964. Comparative analysis reveals the area was occupied during this period. No significant changes are observed.

DESCRIPTION OF INSTALLATION

Road Service

Secondary all-weather roads provide access to the Lubny-Lokhvista highway.

Ammunition Storage Area

Area F is probably secured and contains 48 probable ammunition storage buildings and 7 support buildings. Track activity indicates light use of this area.

Other Buildings and Facilities

Area H is an area of unidentified activity consisting of a road pattern in the woods. Small scale photography and vegetation preclude identification of the activity.

Small-Arms Firing Ranges

Areas L1 and L2 are 400- by 50-foot small-arms firing ranges. Lack of scarring indicates little use of the ranges.

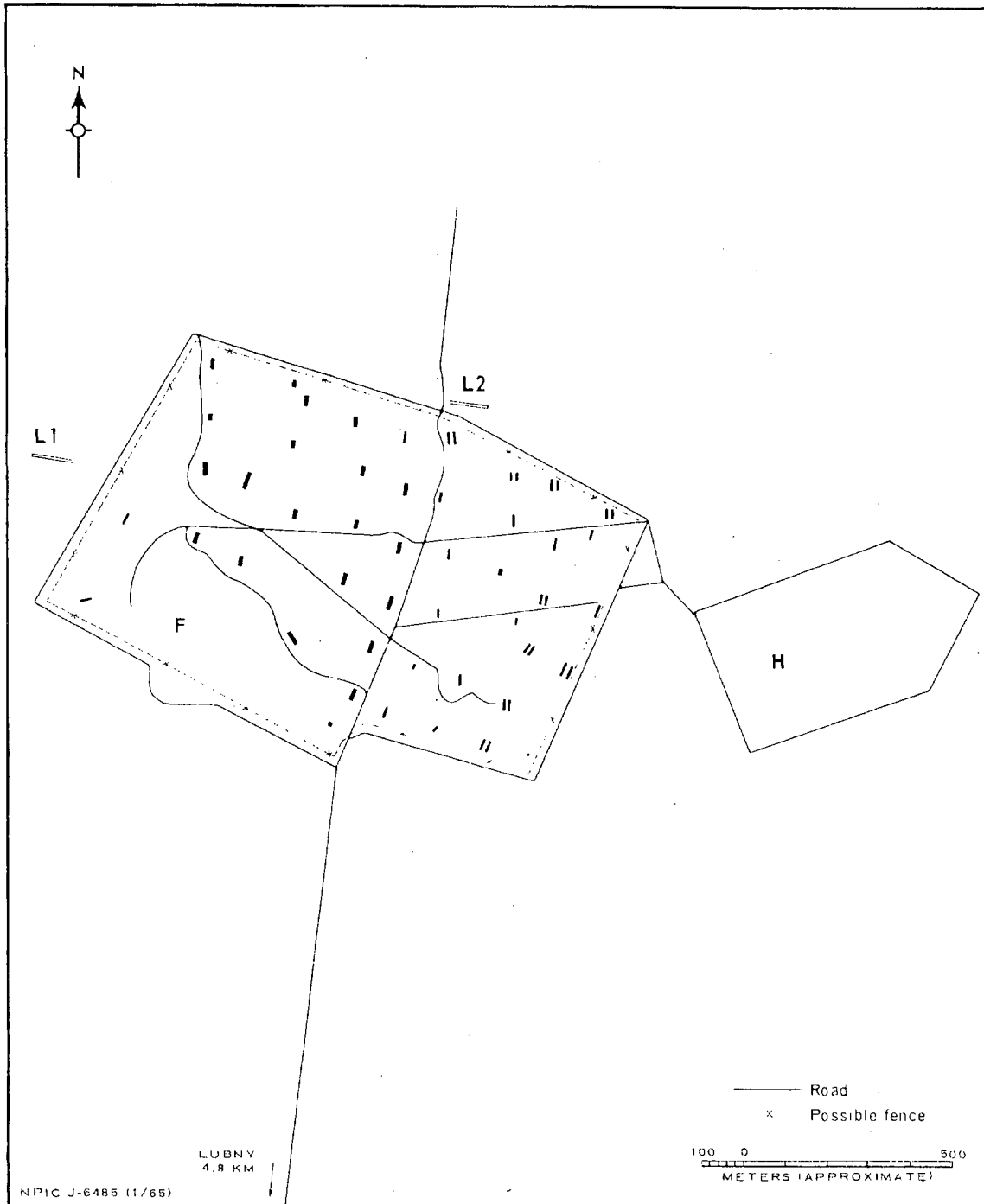


FIGURE 3. PROBABLE AMMUNITION STORAGE AREA. Sketch compiled from [redacted] June 1964.

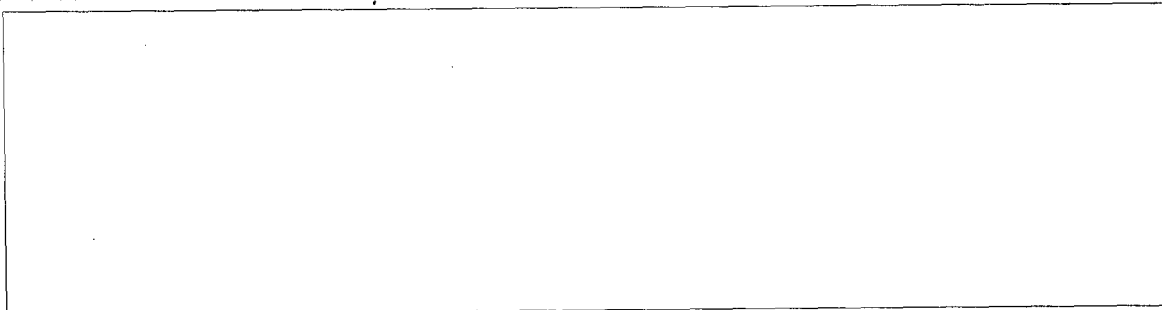
TOP SECRET RUFF

Handle Via
TALENT-KEYHOLE
Control System Only

TCS-80032/65

REFERENCES

PHOTOGRAPHY



MAPS OR CHARTS

US Air Target Chart, Series 200, Sheet 0233-15BL, 3d ed, Jun 62 (SECRET)

REQUIREMENT

C-RR4-81,611 (partial answer)

NPIC PROJECT

11627/64

TOP SECRET RUFF

Handle Via
TALENT-KEYHOLE
Control System Only

~~TOP SECRET~~

~~TOP SECRET~~