

PHOTOGRAPHIC INTERPRETATION REPORT

# SOVIET MILITARY ORDER OF BATTLE BALTIC MD

APPROVED FOR  
RELEASE-HISTORICAL  
COLLECTION  
DIVISION-HR70-14  
DATE: 05-10-2012



CIA



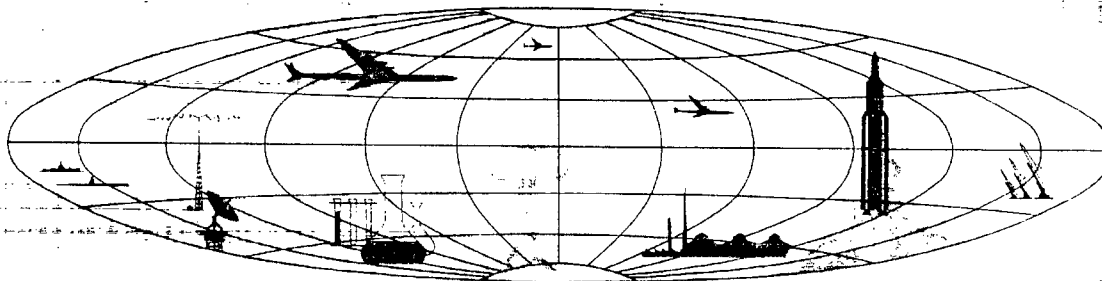
DIA

Handle Via **TALENT - KEYHOLE** Control Only

WARNING

This document contains classified information affecting the national security of the United States within the meaning of the espionage laws U. S. Code Title 18, Sections 793 and 794. The law prohibits its transmission or the revelation of its contents in any manner to an unauthorized person, as well as its use in any manner prejudicial to the safety or interest of the United States or for the benefit of any foreign government to the detriment of the United States. It is to be seen only by personnel especially indoctrinated and authorized to receive TALENT-KEYHOLE information. Its security must be maintained in accordance with KEYHOLE and TALENT regulations.

NATIONAL PHOTOGRAPHIC INTERPRETATION CENTER



Excluded from automatic  
downgrading and declassification

~~TOP SECRET RUFF~~

TCS-80082/65

## PREFACE

This report is one in a series on Soviet Ground Force and Logistic installations being prepared for a DIA/CIA Panel. The series is being coordinated, published and disseminated by NPIC. The photographic analysis is being performed by the NPIC Photographic Analysis Group, the CIA Photographic Intelligence Division (NPIC), and the Production Center 1P1a (DIA). The photographic analysis for this particular report was performed by the Production Center 1P1a.

In the interest of uniformity, the titles and letter designators for the facilities observed at these installations are identical with those appearing in the project requirement. When a specific facility is not observed both its title and letter designator are omitted in the report.

Titles and letter designators for the various facilities are as follows: (A) railroad service, (B) road service, (C) landing strips, (D) administrative and troop housing areas, (E) storage areas, (F) ammunition storage areas, (G) POL storage areas, (H) other buildings and facilities, (J) equipment storage/maintenance areas, (K) athletic fields, (L) small arms firing ranges, (M) driver training areas, (N) tank/assault gun firing ranges, (P) flat trajectory firing ranges, (Q) artillery emplacements (batteries), (R) infantry or combined arms field training areas or courses, (S) special training facilities, (T) unidentified facilities or tracking activity.

~~TOP SECRET RUFF~~

SOVETSK ARMY BARRACKS WEST

(55-04N 021-52E)

SOVETSK, LATVIYSKAYA SSR, USSR

BALTIC MD

BE No:  AL No:  COMOR No:

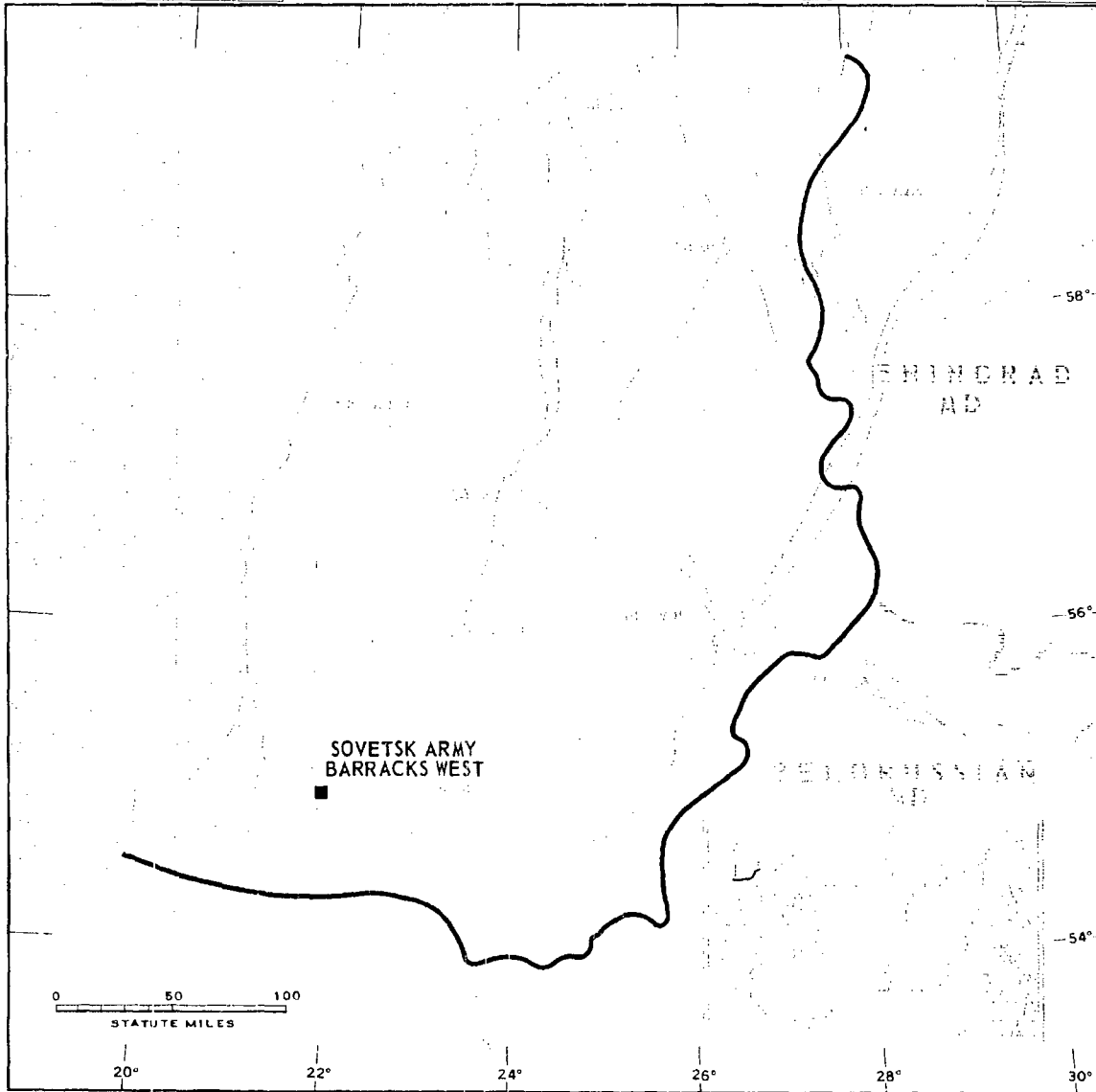


FIGURE 1. LOCATION OF SOVETSK ARMY BARRACKS WEST.

NPIC J-7691 (1/65)

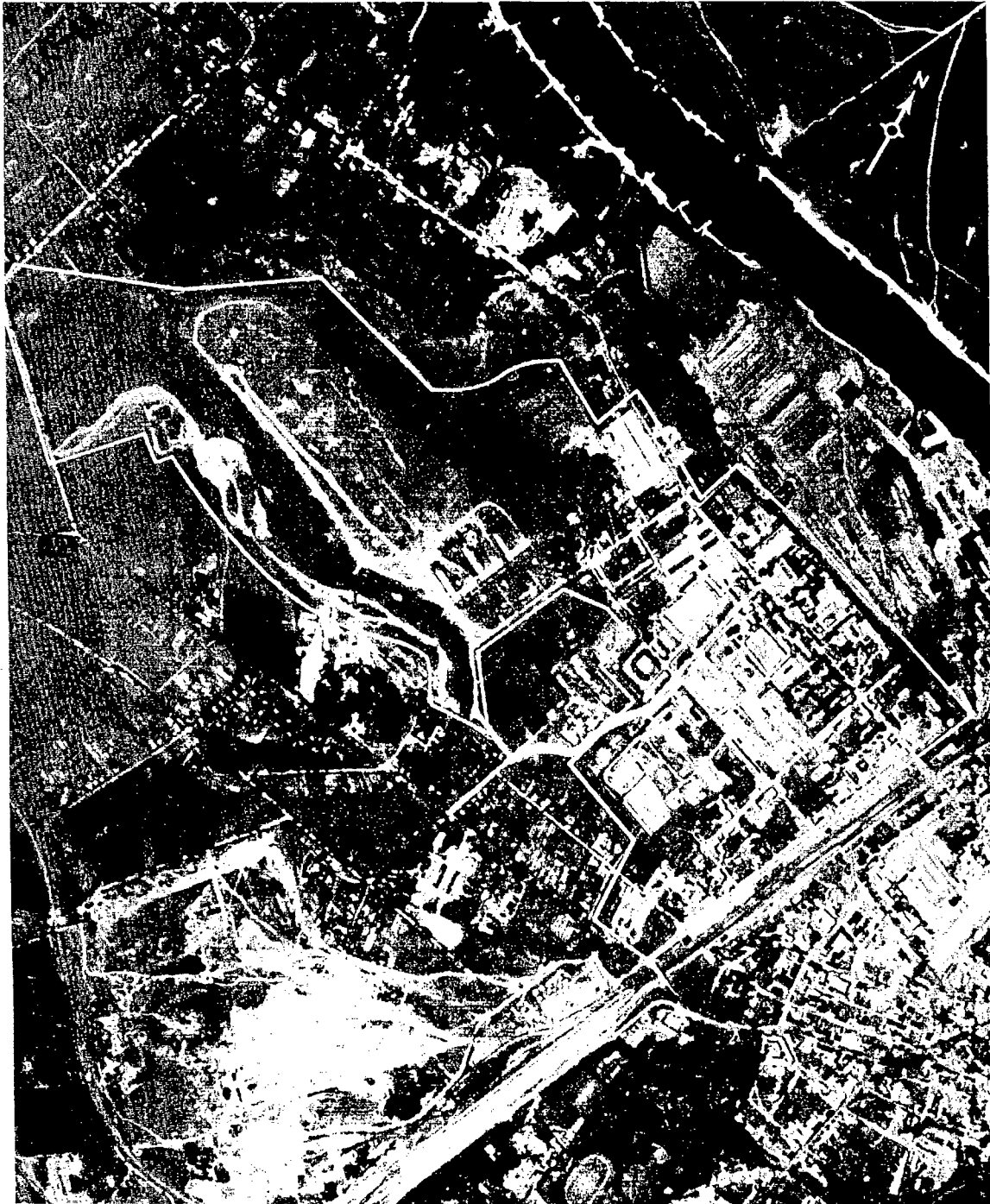


FIGURE 2. SOVETSK ARMY BARRACKS WEST, SOVETSK, USSR, JUNE 1964.

NPIC J-7692 (1/65)

SUMMARY

Sovetsk Army Barracks West is located approximately 500 meters south-southwest of the Neman River railroad bridge and 250 meters west of Sovetsk Army Barracks Central (Figure 1).

This installation covers approximately 253 acres and contains multistory barracks, and buildings for administration, storage, support, vehicle storage, and vehicle maintenance. An infantry or combined-arms field training area

with 3 small-arms firing ranges and covering approximately 316 acres is adjacent to the installation (Figures 2 and 3).

The barracks area was covered by 8 KEYHOLE missions from December 1961 to July 1964. The area has been active and there are no changes discernible. Better quality of photography shows buildings which are not new, but could not be identified on earlier coverage.

DESCRIPTION OF INSTALLATION

Railroad Service

A rail line is adjacent to the barracks installation on the east side.

Road Service

This installation is served by city streets.

Administration and Troop Housing Areas

Area D1 contains 7 multistory barracks, 10 barracks, 2 storage buildings, and 13 support buildings.

Area D2 contains 3 E-shaped administration buildings, 1 L-shaped administration building, 1 L-shaped support building, 8 storage buildings, a water tower, and 28 support buildings.

General Storage Area

Area E contains 3 storage buildings and 8 support buildings.

Equipment Storage/Maintenance Areas

Area J1 contains 3 support buildings, 1 storage building, 1 L-shaped administration building, and 2 vehicle storage/maintenance buildings (each 615 by 55 feet).

Area J2 contains 4 storage buildings, 7

support buildings, and 3 vehicle storage/maintenance buildings (420 by 35 feet, 340 by 35 feet, and 235 by 35 feet).

Area J3 contains 3 support buildings and 5 vehicle storage buildings (535 by 75 feet, 440 by 35 feet, 380 by 75 feet, 275 by 75 feet, and 190 by 85 feet).

Area J4 contains 1 vehicle storage/maintenance building (200 by 75 feet), 1 vehicle storage building (400 by 40 feet), 1 vehicle storage building (200 by 40 feet), and 9 support buildings.

Athletic Field

An athletic field (K) is located south-southeast of the barracks installation.

Small-Arms Firing Ranges

Area L contains 3 small-arms firing ranges (each 300 by 40 feet), 6 support buildings, and 3 range towers.

Infantry or Combined-Arms Field Training Area or Courses

Area R covers approximately 316 acres and contains 1 support building, numerous trenches, and ground scars.

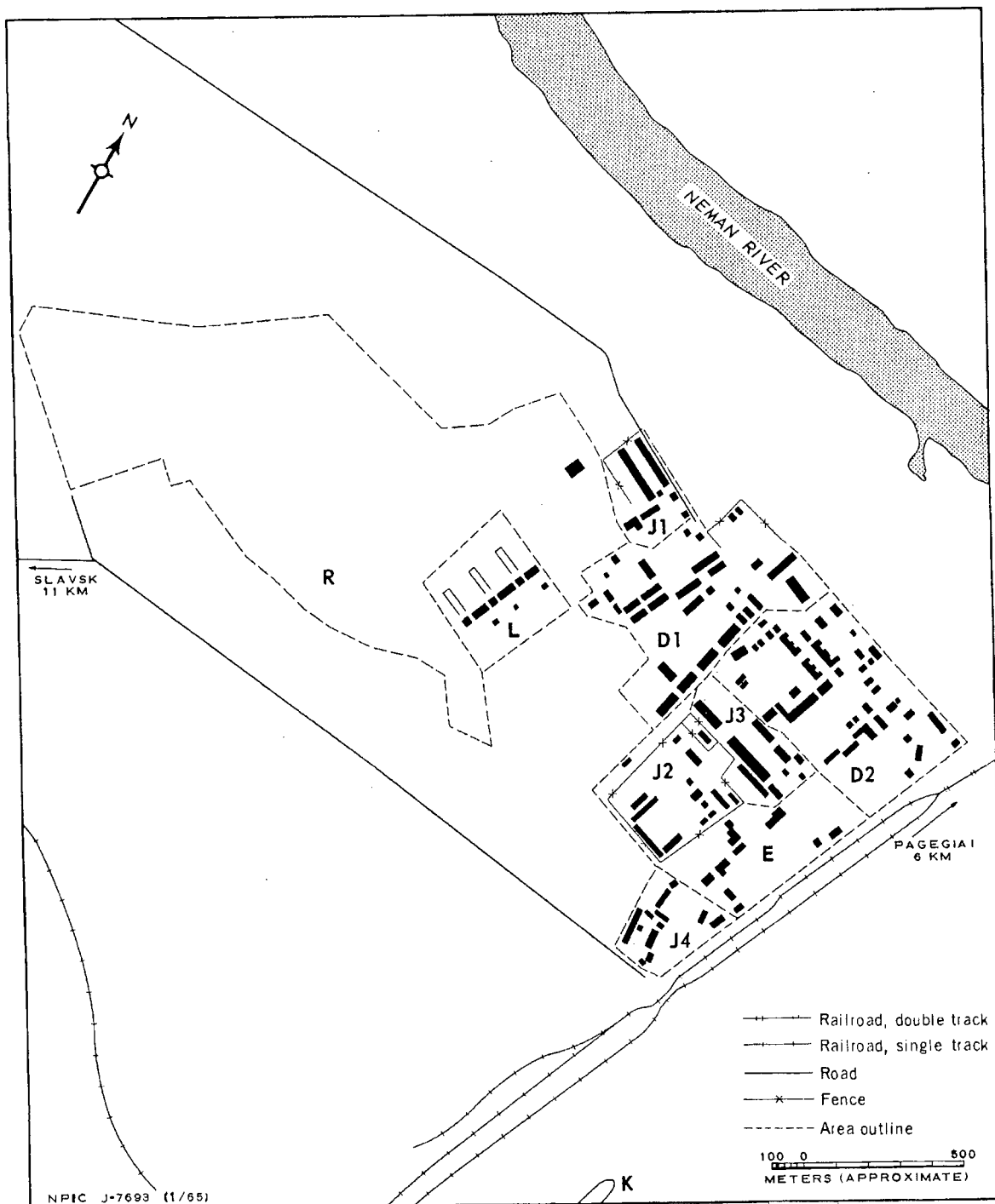
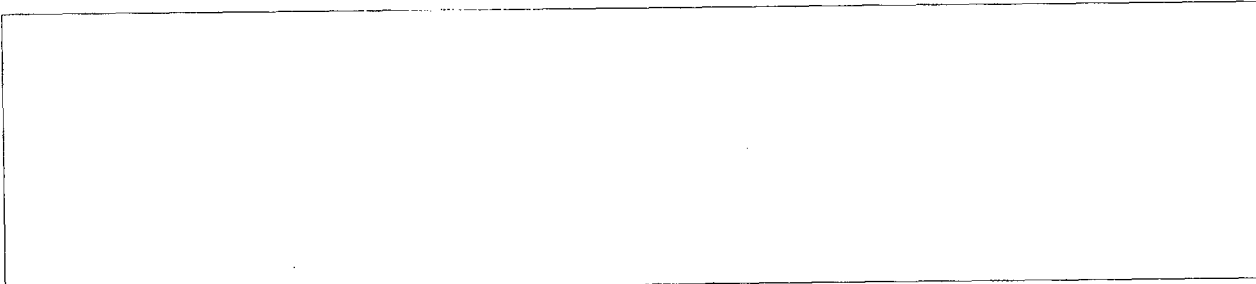


FIGURE 3. SOVETSK ARMY BARRACKS WEST. Sketch compiled from Mission [ ] June 1964.

REFERENCES

PHOTOGRAPHY



MAPS OR CHARTS

US Air Target Chart, Series 200, Sheet 0168-6HL, 2d ed, Aug 62 (SECRET)

DOCUMENTS



Army. PIB-TK-155-62, *Military Complex, Baltic MD, Sovetsk, USSR*, Oct 62 (TOP SECRET RUFF)

REQUIREMENT

DIAAP-1-15-64 (partial answer)

NPIC PROJECT

11904/64

~~TOP SECRET~~

~~TOP SECRET~~