

[REDACTED]
PHOTOGRAPHIC INTERPRETATION REPORT

SOVIET MILITARY ORDER OF BATTLE BALTIC MD

APPROVED FOR RELEASE
Historical Collection Division
HR70-14
DATE: 04-27-2012



CIA



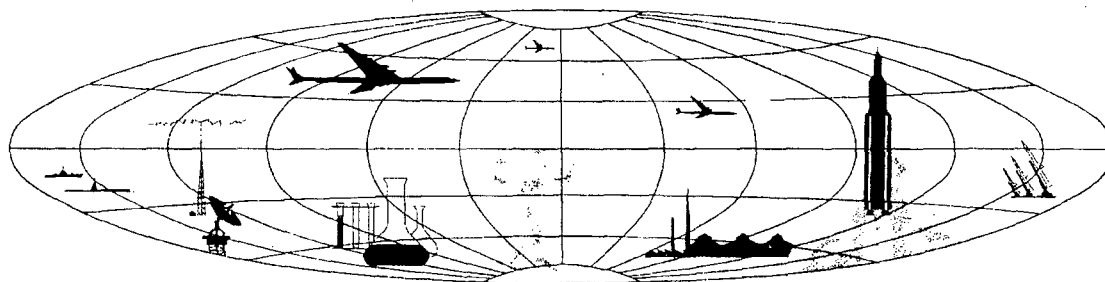
DIA

Handle Via **TALENT - KEYHOLE** Control Only

WARNING

This document contains classified information affecting the national security of the United States within the meaning of the espionage laws U. S. Code Title 18, Sections 793 and 794. The law prohibits its transmission or the revelation of its contents in any manner to an unauthorized person, as well as its use in any manner prejudicial to the safety or interest of the United States or for the benefit of any foreign government to the detriment of the United States. It is to be seen only by personnel especially indoctrinated and authorized to receive TALENT-KEYHOLE information. Its security must be maintained in accordance with KEYHOLE and TALENT regulations.

NATIONAL PHOTOGRAPHIC INTERPRETATION CENTER



~~TOP SECRET RUFF~~

TCS-80089/65

PREFACE

This report is one in a series on Soviet Ground Force and Logistic installations being prepared for a DIA/CIA Panel. The series is being coordinated, published and disseminated by NPIC. The photographic analysis is being performed by the NPIC Photographic Analysis Group, the CIA Photographic Intelligence Division (NPIC), and the Production Center 1P1a (DIA). The photographic analysis for this particular report was performed by the Production Center 1P1a.

In the interest of uniformity, the titles and letter designators for the facilities observed at these installations are identical with those appearing in the project requirement. When a specific facility is not observed both its title and letter designator are omitted in the report.

Titles and letter designators for the various facilities are as follows: (A) railroad service, (B) road service, (C) landing strips, (D) administrative and troop housing areas, (E) storage areas, (F) ammunition storage areas, (G) POL storage areas, (H) other buildings and facilities, (J) equipment storage/maintenance areas, (K) athletic fields, (L) small arms firing ranges, (M) driver training areas, (N) tank/assault gun firing ranges, (P) flat trajectory firing ranges, (Q) artillery emplacements (batteries), (R) infantry or combined arms field training areas or courses, (S) special training facilities, (T) unidentified facilities or tracking activity.

~~TOP SECRET RUFF~~

RIGA AMMUNITION DEPOT ROPAZI
(57-03N 024-26E)
RIGA, LATVIYSKAYA SSR, USSR
BALTIC MD

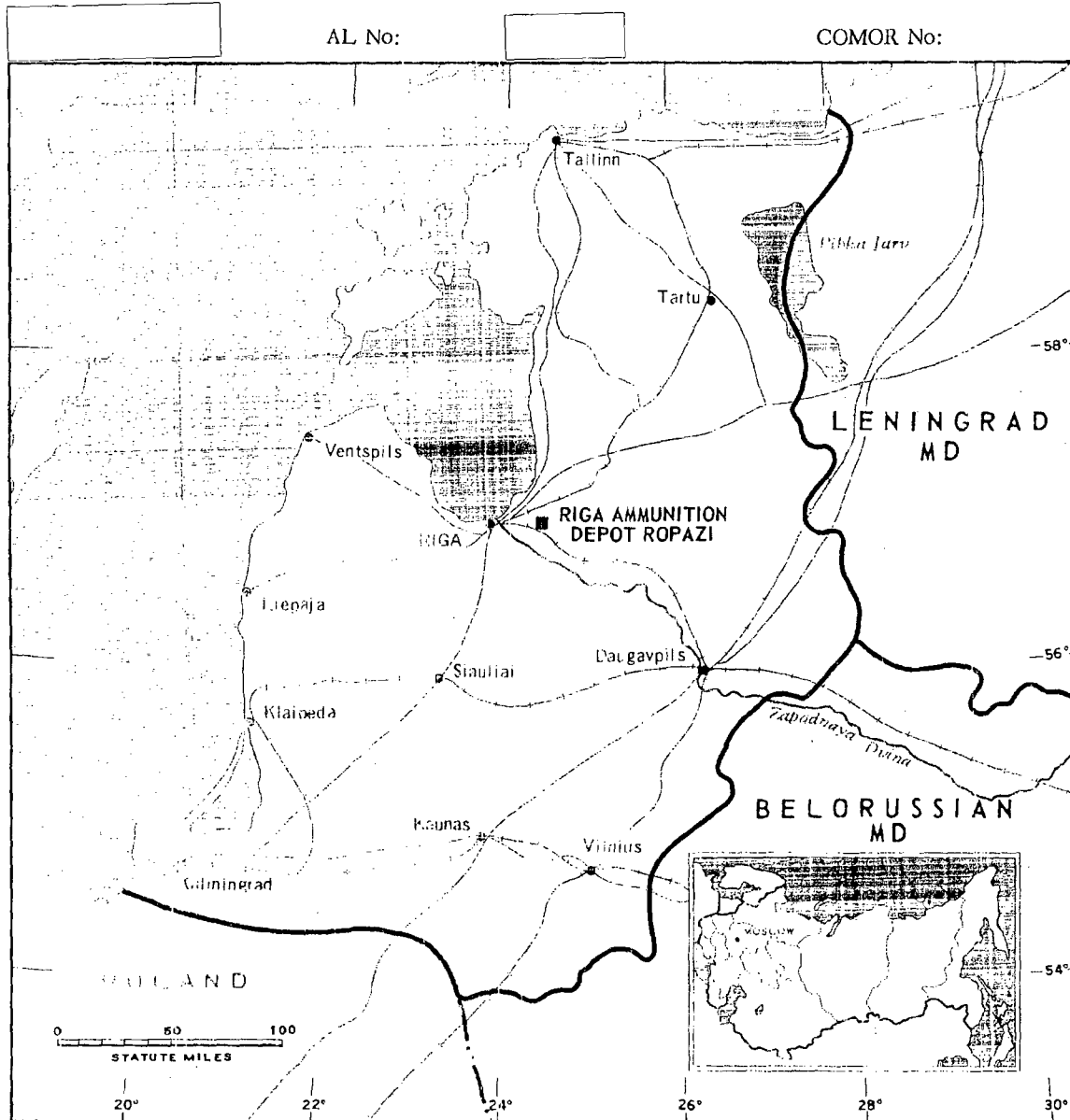


FIGURE 1. LOCATION OF RIGA AMMUNITION DEPOT ROPAZI.

NPIC J-7710 (11/69)

~~TOP SECRET RUFF~~

Handle Via
TALENT-KEYHOLE
Control System Only

TCS-80089/65

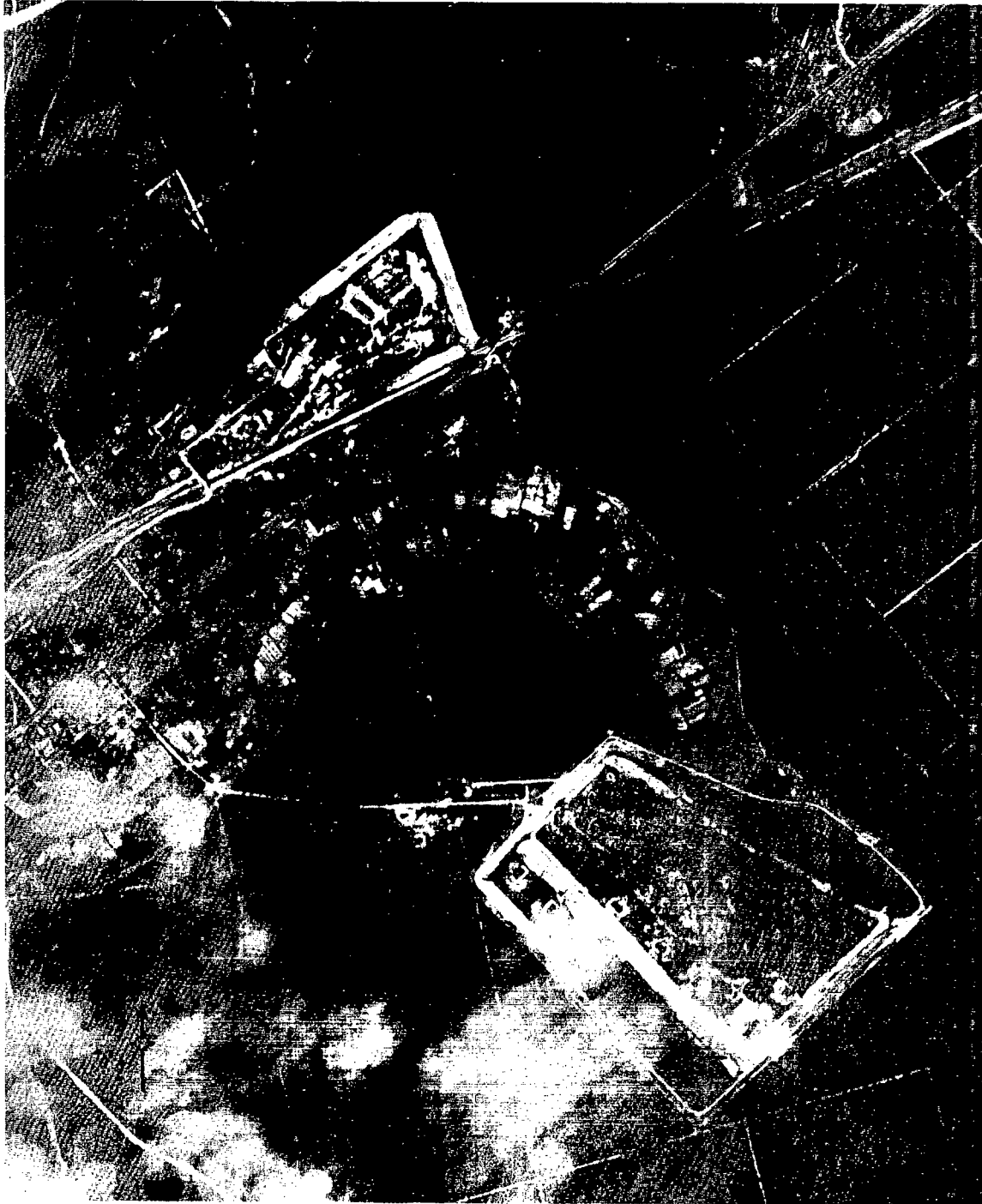


FIGURE 2. RIGA AMMUNITION DEPOT ROPAZI, RIGA, USSR, JUNE-JULY 1964.

NPIC J-7711 (1/65)

- 3 -

~~TOP SECRET RUFF~~

Handle Via
TALENT-KEYHOLE
Control System Only

SUMMARY

Riga Ammunition Depot Ropazi is located approximately 20 kilometers (km) east of Riga at the east end of Ropazi (Figure 1). The depot is divided into 3 separate sections: a general storage area of approximately 50 acres, an ammunition/storage area and a support area. The depot (Figures 2 and 3) probably stores explosives and general supplies for the Riga Training Area (10 km north) and for the numerous military installations in the city of Riga.

The general storage area is located adjacent to the railroad at the east end of Ropazi and contains a rail spur from the Riga-Sigulda

rail line, and 35 buildings. The ammunition storage area is not rail served, but has a good interior road net and contains 7 large and 45 small revetted/bunkered explosives storage buildings. Both localities are in heavily wooded areas, are double fenced, and contain firebreaks. The support area, which is not fenced, contains 1 possible barracks and 5 support buildings.

A comparative analysis of the 13 KEYHOLE missions covering the area between September 1961 and July 1964 reveals no major changes in the installation.

DESCRIPTION OF INSTALLATION

Railroad Service

A rail spur from the Riga-Sigulda rail line enters Area E, 1 km north of areas D and F.

Road Service

Good interior road net and good all-weather roads connect the Depot with Riga and Sigulda.

Administrative and Troop Housing Area

Area D contains 1 possible barracks and 5 support buildings.

General Storage Area

Area E contains 1 possible administration building, 26 storage buildings and 8 support buildings.

Ammunition Storage Area

Area F contains 2 storage buildings, 7 large revetted ammunition storage buildings and 45 small bunkered/revetted buildings.

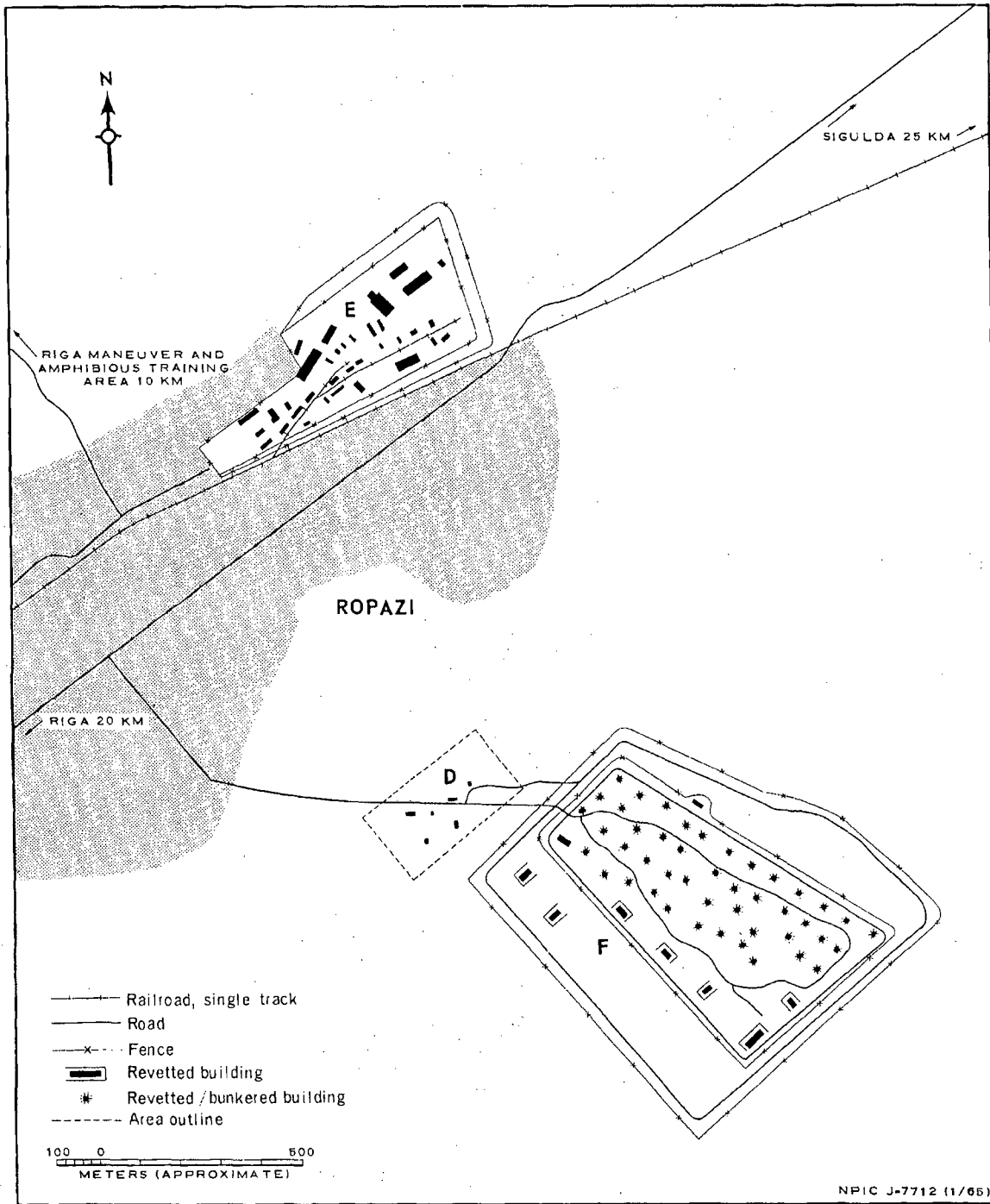


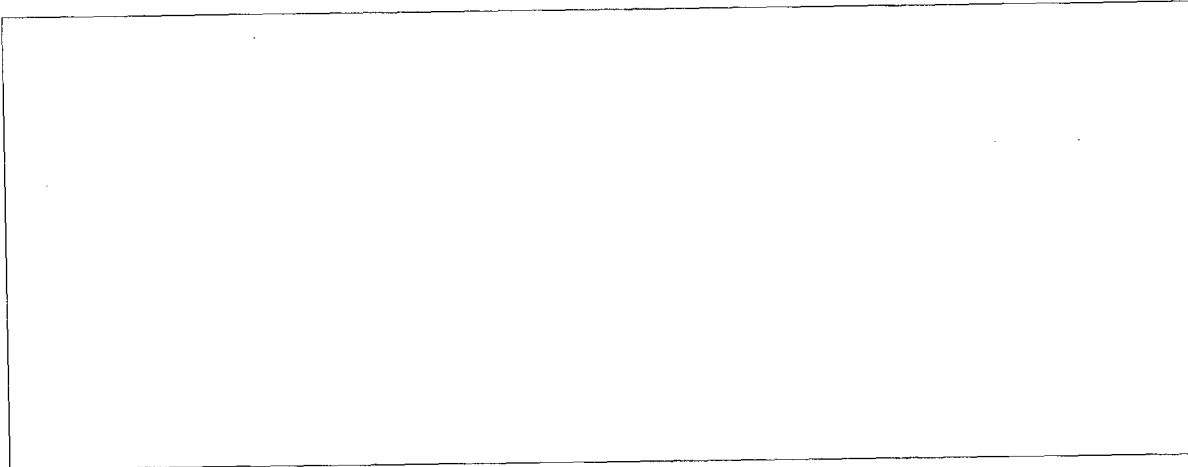
FIGURE 3. RIGA AMMUNITION DEPOT ROPAZI. Sketch compiled from [redacted] June 1964 and [redacted] July 1964.

~~TOP SECRET RUFF~~

Handle Via
TALENT-KEYHOLE
Control System Only

TCS-80089/65

REFERENCES



MAPS OR CHARTS

US Air Target Chart, Series 200, Sheet 0153-17HL, 4th ed, Jul 63 (SECRET)

DOCUMENTS

Army. PIB TK 71-62 *Riga Ammo Storage Ropazi, South*, Jun 62 (TOP SECRET RUFF)

REQUIREMENT

DIAAP-1-15-64 (partial answer)

NPIC PROJECT

11904/64

- 6 -

~~TOP SECRET RUFF~~

Handle Via
TALENT-KEYHOLE
Control System Only

~~TOP SECRET~~

~~TOP SECRET~~