

HR70-14

NPIC/R-909/64

December 1964

~~TOP SECRET~~

TCS-8458/64

Copy **109**  
6 Pages



PHOTOGRAPHIC INTERPRETATION REPORT

APPROVED FOR RELEASE -  
HISTORICAL COLLECTION  
DIVISION DATE: 06-18-2012

# SOVIET MILITARY ORDER OF BATTLE KIYEV MD



CIA



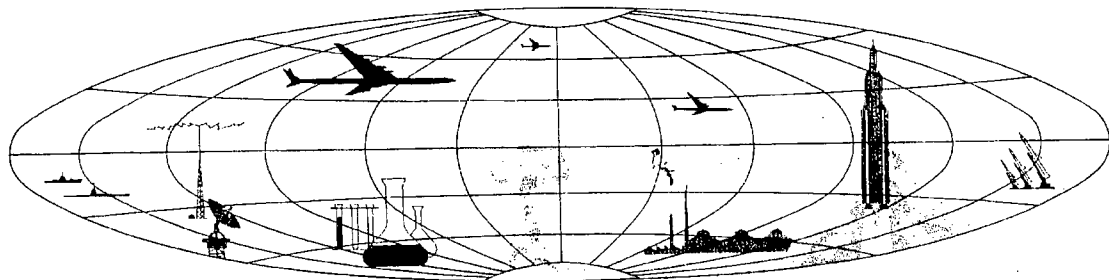
DIA

Handle Via **TALENT - KEYHOLE** Control Only

WARNING

This document contains classified information affecting the national security of the United States within the meaning of the espionage laws U. S. Code Title 18, Sections 793 and 794. The law prohibits its transmission or the revelation of its contents in any manner to an unauthorized person, as well as its use in any manner prejudicial to the safety or interest of the United States or for the benefit of any foreign government to the detriment of the United States. It is to be seen only by personnel especially indoctrinated and authorized to receive TALENT-KEYHOLE information. Its security must be maintained in accordance with KEYHOLE and TALENT regulations.

NATIONAL PHOTOGRAPHIC INTERPRETATION CENTER



~~TOP SECRET~~

GROUP 1  
Excluded from automatic  
downgrading and declassification

PREFACE

This report is one in a series on Soviet Ground Force and logistic installations being prepared for a DIA/CIA Panel. The series is being coordinated, published and disseminated by NPIC. The photographic analysis is being performed by the NPIC Photographic Analysis Group, the CIA Photographic Intelligence Division (NPIC), and the Production Center IPIC (DIA). The photographic analysis for this particular report was performed by the NPIC Photographic Analysis Group.

In the interest of uniformity, the titles and letter designators for the facilities observed at these installations are identical with those appearing in the project requirement. When a specific facility is not observed both its title and letter designator are omitted in the report.

Titles and letter designators for the various facilities are as follows: (A) railroad service, (B) road service, (C) landing strips, (D) administrative and troop housing areas, (E) storage areas, (F) ammunition storage areas, (G) POL storage areas, (H) other buildings and facilities, (J) equipment storage/maintenance areas, (K) athletic fields, (L) small arms firing ranges, (M) driver training areas, (N) tank/assault gun firing ranges, (P) flat trajectory firing ranges, (Q) artillery emplacements (batteries), (R) infantry or combined arms field training area or courses, (S) special training facilities, (U) unidentified facilities or tracking activity.

BELAYA TSERKOV ARMY BARRACKS NW AND ASSOCIATED STORAGE AREA

(49-49N 030-04E)

BELAYA TSERKOV, KIYEVSKAYA OBLAST, USSR

KIYEV MD

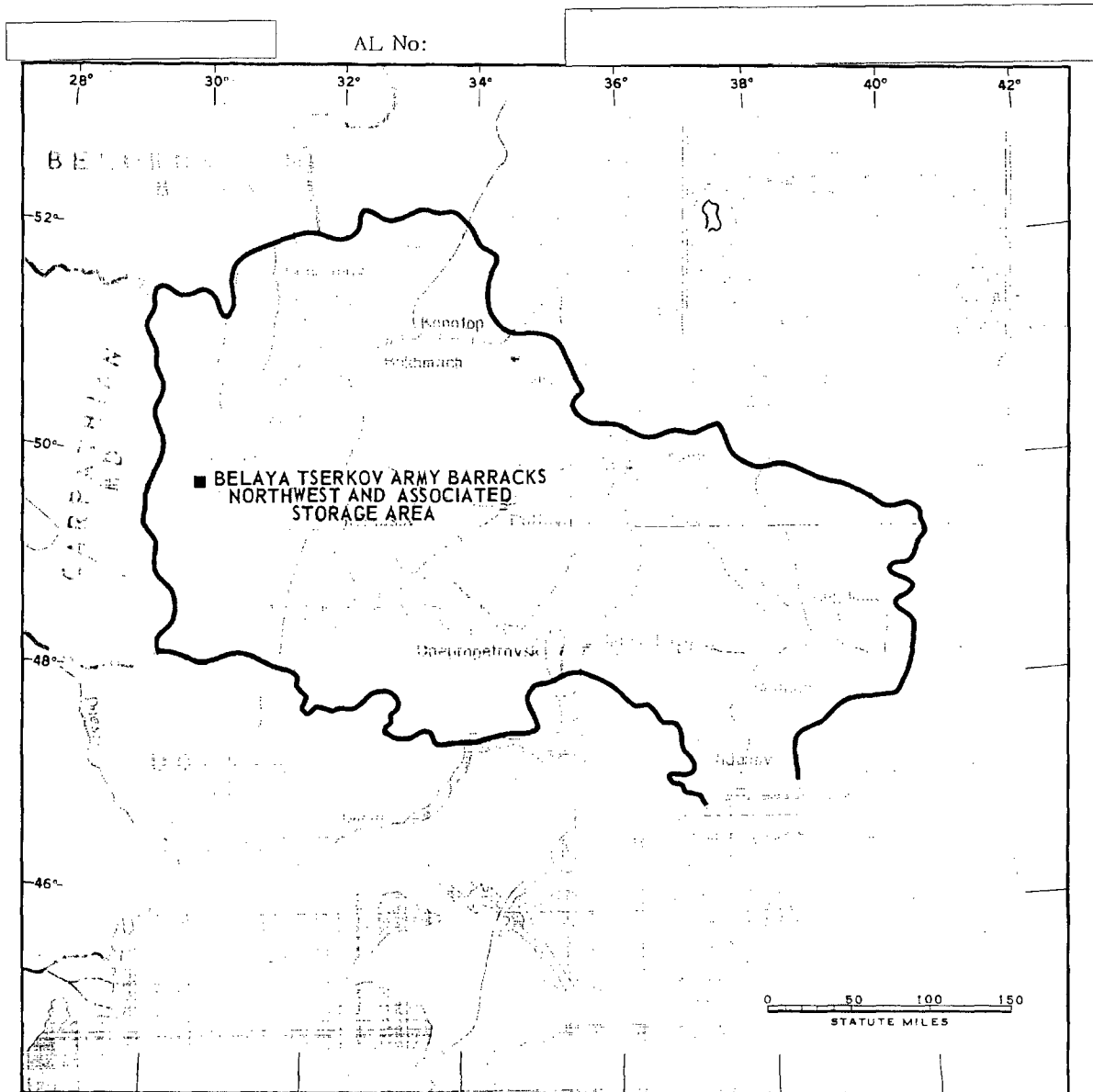


FIGURE 1. LOCATION OF BELAYA TSERKOV ARMY BARRACKS NW AND ASSOCIATED STORAGE AREA.

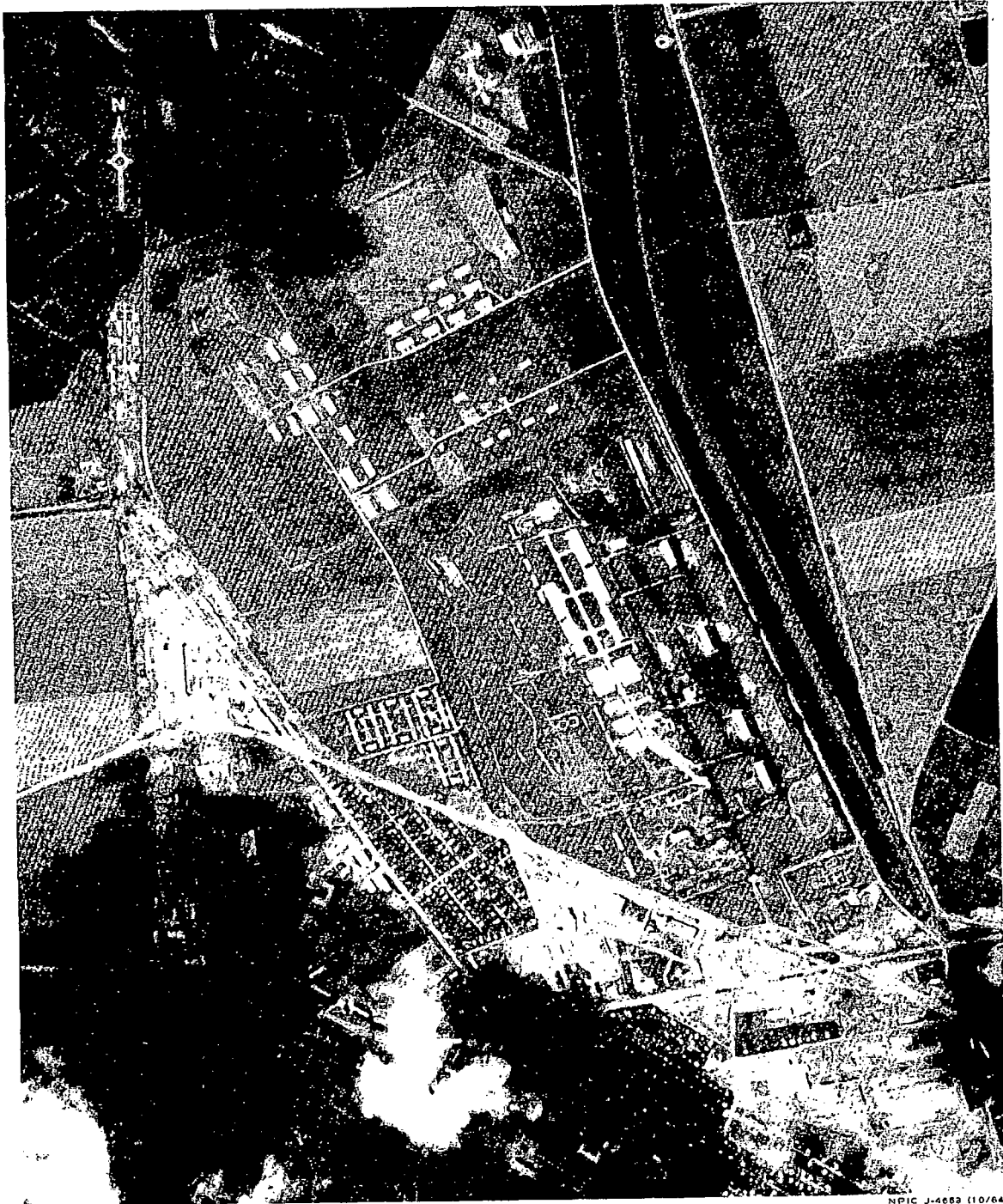


FIGURE 2. BELAYA TSERKOV ARMY BARRACKS NW AND ASSOCIATED STORAGE AREA, USSR, AUGUST 1964.

SUMMARY

Belaya Tserkov Army Barracks NW and an associated storage area are located on the north-west edge of Belaya Tserkov adjacent to the Belaya Tserkov-Fastov Railroad (Figure 1).

The barracks area covers approximately 280 acres and contains one administration building, 4 barracks, 2 probable vehicle maintenance sheds, 33 storage buildings, 14 support buildings, 2 small-arms firing ranges, an athletic field, and a figure-8 wheeled-vehicle driver-training course. The double-secured associated storage area immediately north of the barracks covers approximately 230 acres and contains 33 storage buildings and 9 support buildings (Figures 2 and 3).

The referenced Army and [ ] reports indicate the storage area is an integral part of the barracks area; however, the large number of storage buildings and the separate security measures, consisting of double fencing, suggest the separate and primary function of a storage depot. The direct road connection between the two areas indicates a probable association.

The installation was covered by 8 KEYHOLE Missions between December 1961 and August 1964. A comparative analysis revealed the same level of activity with no significant change in the facilities.

DESCRIPTION OF INSTALLATION

Railroad Service

The Belaya Tserkov-Fastov rail line runs immediately east.

Road Service

An all-weather road provides access to the Belaya Tserkov-Koralevka highway.

Administrative and Troop Housing Area

Area D contains one administration, 4 barracks, and 9 support buildings.

General Storage Areas

Area E1 contains 23 storage and 3 support buildings.

Area E2 contains 10 storage and 6 support buildings.

Area E3 is an open storage area. Unidentified materials in open storage were observed on August 1964 coverage.

Area E4 contains 2 storage and 3 support buildings.

Area E5 contains 9 storage buildings.

Area E6 contains 11 storage buildings.

Area E7 contains 11 storage and 2 support buildings.

Equipment Storage/Maintenance Area

Area J contains 2 probable vehicle maintenance sheds, 240 by 30 feet and 210 by 30 feet.

Athletic Field

Area K is an athletic field.

Small-Arms Firing Ranges

Area L1 is a 780- by 70- small-arms firing range.

Area L2 is a 380- by 70-foot small-arms firing range.

Driver-Training Area

Area M1 is a figure-8 wheeled-vehicle driver-training course, apparently in use.

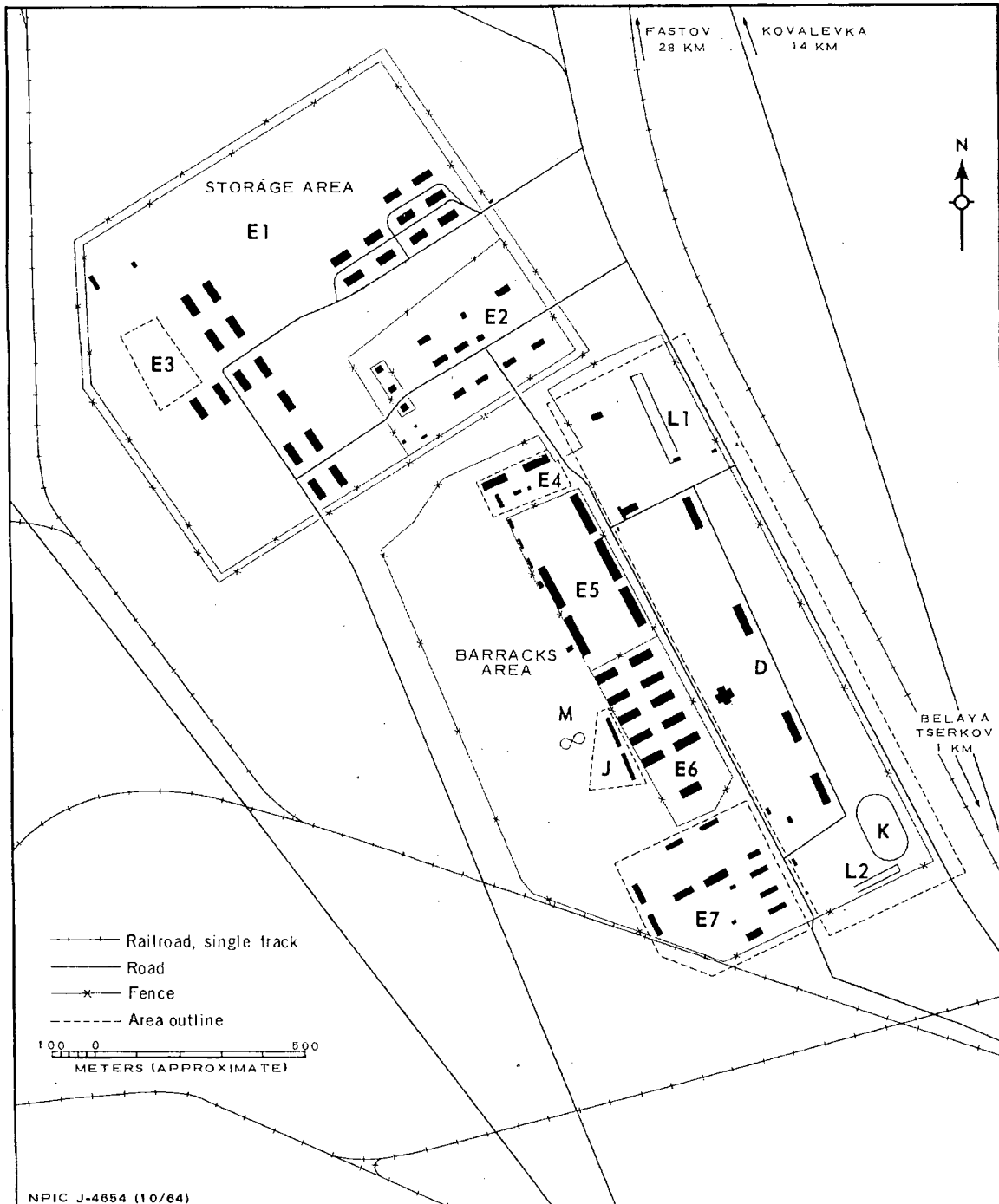


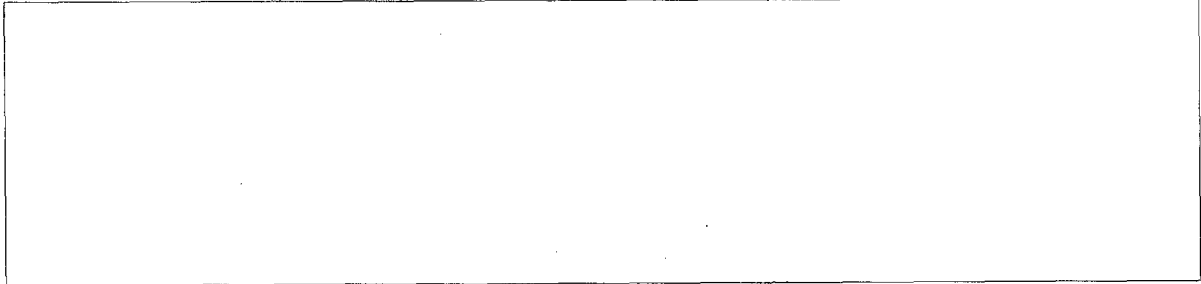
FIGURE 3. BELAYA TSERKOV ARMY BARRACK NW AND ASSOCIATED STORAGE AREA. Sketch compiled from [ ] June 1964.

Handle Via  
TALENT-KEYHOLE  
Control System Only

TCS-8458/64  
NPIC/R-909/64

REFERENCES

PHOTOGRAPHY



MAPS OR CHARTS

US Air Target Chart, Series 200, Sheet 0233-13HL, 3d ed, May 62 (SECRET)

DOCUMENTS

ARMY. PIB-TK-139-62, *Military Supply Depot, Belaya Tsarkov*, Oct 62 (TOP SECRET RUFF)



REQUIREMENT

C-RR4-81,614 (partial answer)

NPIC PROJECT

N-799/64

Handle Via  
TALENT-KEYHOLE  
Control System Only

~~TOP SECRET~~

~~TOP SECRET~~