

HR70-14

TOP SECRET

NP:C/R-5106/64

December 1964

TCS-10643/64

Copy 108

6 Pages



PHOTOGRAPHIC INTERPRETATION REPORT

APPROVED FOR RELEASE -
HISTORICAL COLLECTION
DIVISION DATE: 06-18-2012

SOVIET MILITARY ORDER OF BATTLE KIYEV MD



CIA



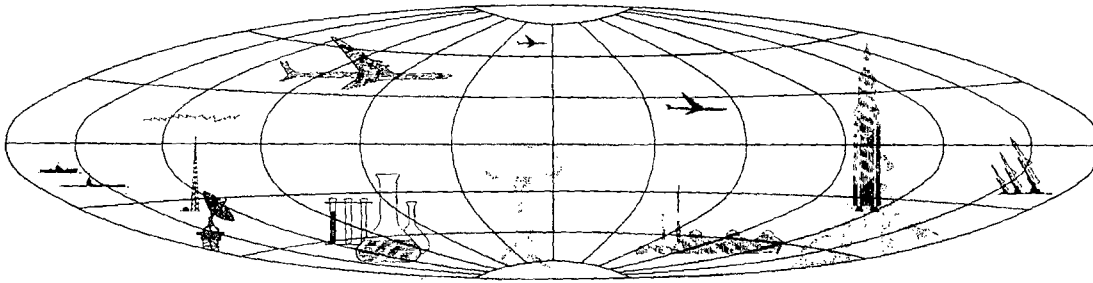
DIA

Handle Via TALENT-KEYHOLE Control Only

WARNING

This document contains classified information affecting the national security of the United States within the meaning of the espionage laws U. S. Code Title 18, Sections 793 and 794. The law prohibits its transmission or the revelation of its contents in any manner to an unauthorized person, as well as its use in any manner prejudicial to the safety or interest of the United States or for the benefit of any foreign government to the detriment of the United States. It is to be seen only by personnel especially indoctrinated and authorized to receive TALENT-KEYHOLE information. Its security must be maintained in accordance with KEYHOLE and TALENT regulations.

NATIONAL PHOTOGRAPHIC INTERPRETATION CENTER



TOP SECRET

GROUP 1
Excluded from automatic
downgrading and declassification

PREFACE

This report is one in a series on Soviet Ground Force and logistic installations being prepared for a DIA/CIA Panel. The series is being coordinated, published and disseminated by NPIC. The photographic analysis is being performed by the NPIC Photographic Analysis Group, the CIA Photographic Intelligence Division (NPIC), and the Production Center 1P1c (DIA). The photographic analysis for this particular report was performed by the NPIC Photographic Analysis Group.

In the interest of uniformity, the titles and letter designators for the facilities observed at these installations are identical with those appearing in the project requirement. When a specific facility is not observed both its title and letter designator are omitted in the report.

Titles and letter designators for the various facilities are as follows: (A) railroad service, (B) road service, (C) landing strips, (D) administrative and troop housing areas, (E) storage areas, (F) ammunition storage areas, (G) POL storage areas, (H) other buildings and facilities, (J) equipment storage/maintenance areas, (K) athletic fields, (L) small-arms firing ranges, (M) driver training areas, (N) tank/assault gun firing ranges, (P) flat trajectory firing ranges, (Q) artillery emplacements (batteries), (R) infantry or combined arms field training area or courses, (S) special training facilities, (T) unidentified facilities or tracking activity.

Handle Via
TALENT-KEYHOLE
Control System Only

TCS-10643/64
NPIC/R-5106/64

BARRACKS AREA

(49-47N 035-59E)

UTKOVKA, KHARKOVSKAYA OBLAST, USSR

KIYEV MD

BE No:

AL No:



COMOR No:

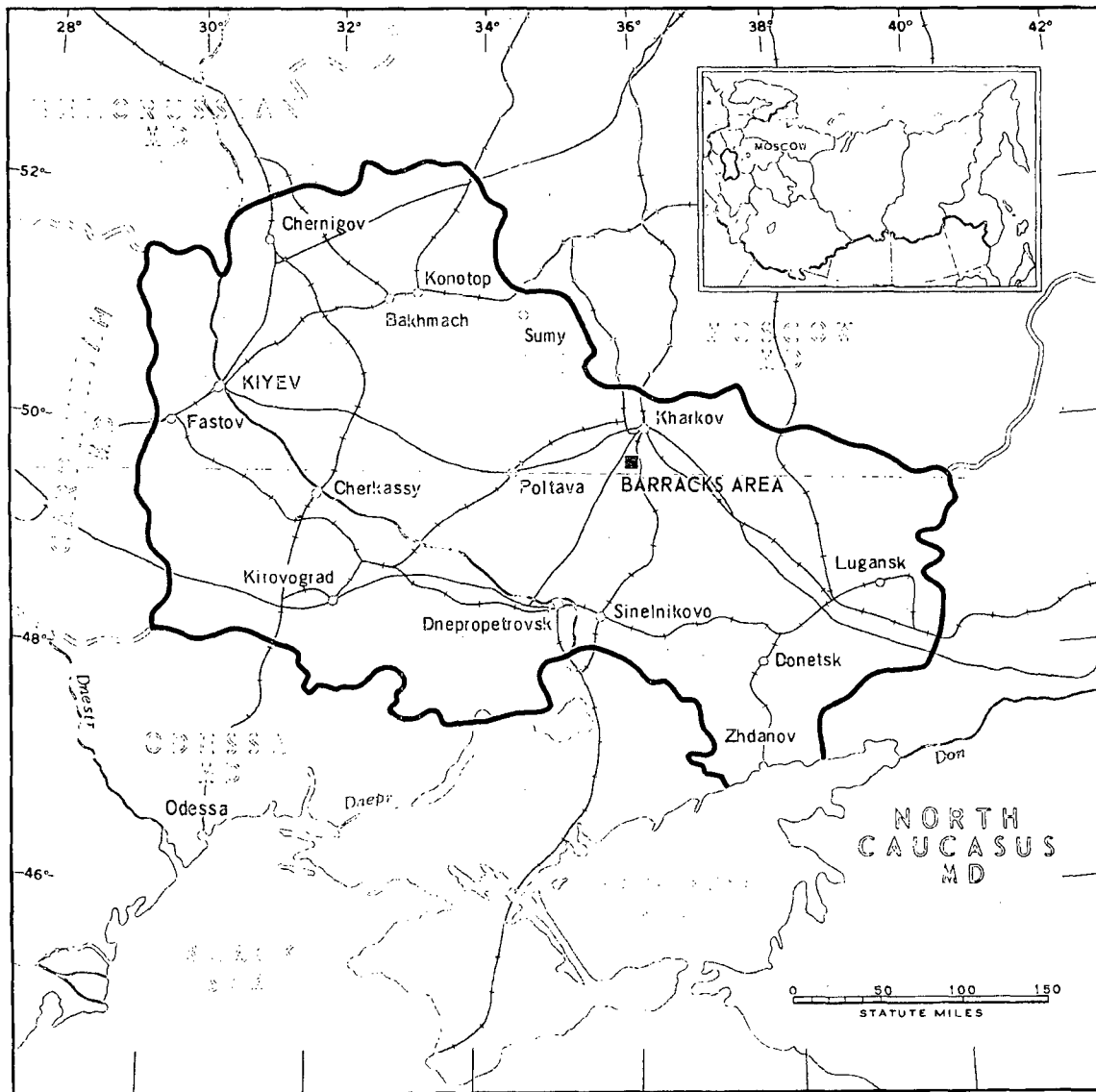


FIGURE 1. LOCATION OF BARRACKS AREA.

NPIC J-6190 (1/65)

Handle Via
TALENT-KEYHOLE
Control System Only

Handle Via
TALENT-KEYHOLE
Control System Only

~~TOP SECRET CHESS RUFF~~

TCS-10643/64
NPIC/R-5106/64



FIGURE 2. BARRACKS AREA, UTKOVKA, USSR, DECEMBER 1963.

NPIC J-0191 (1/65)

~~TOP SECRET CHESS RUFF~~

Handle Via
TALENT-KEYHOLE
Control System Only

Handle Via
TALENT-KEYHOLE
Control System Only

TCS-10643/64
NPIC/R-5106/64

SUMMARY

A barracks area is located 3 kilometers (km) west of Utkovka and 24 km southwest of Kharkov (Figure 1).

The installation covers approximately 185 acres and contains 2 administration buildings, 5 barracks, 4 storage buildings, 5 vehicle sheds, one vehicle maintenance building, 9 support buildings, one possible buried POL storage tank, an athletic field, a small-arms firing range, and an infantry field training area (Figures 2 and 3).

The area was covered by 1960 TALENT photography and 4 KEYHOLE missions between April 1962 and December 1963. Changes in facilities during this period include the construction of 2 vehicle sheds and a maintenance building between February 1960 and April 1962 and an administration building between April 1962 and November 1962. A bivouac area was converted to an athletic field between February 1960 and April 1962. The installation appears generally active on all photography with only light usage on winter coverage.

DESCRIPTION OF INSTALLATION

Railroad Service

The Merefa-Novaya Vodolaga single-track rail line passes just south of the installation.

Administrative and Troop Housing Area

Area D contains 2 administration buildings,

5 barracks, 4 storage buildings, and 6 support buildings. One administration building was added between April 1962 and November 1962.

Equipment Storage/Maintenance Area

Area J contains one 400- by 40-foot vehicle shed, two 360- by 70-foot vehicle sheds, two 380- by 70-foot vehicle sheds, one 100- by 60-foot vehicle maintenance building, 2 support buildings, and one possible buried POL tank. Two vehicle sheds and one maintenance building were added between February 1960 and April 1962.

Athletic Field

Between 1960 and April 1962, a bivouac area was converted to an athletic field (K) with a support building nearby.

Small-Arms Firing Range

Area L is a 650- by 150-foot small-arms firing range. The firing points and target area are 125 feet wide, but the revetment is wider.

Infantry or Combined-Arms Field Training Area or Courses

Area R contains trenches and automatic weapons firing points observed on 1960 snow covered photography, but not visible on KEYHOLE photography.

Handle Via
TALENT-KEYHOLE
Control System Only

TCS-10643/64
NPIC/R-5106/64

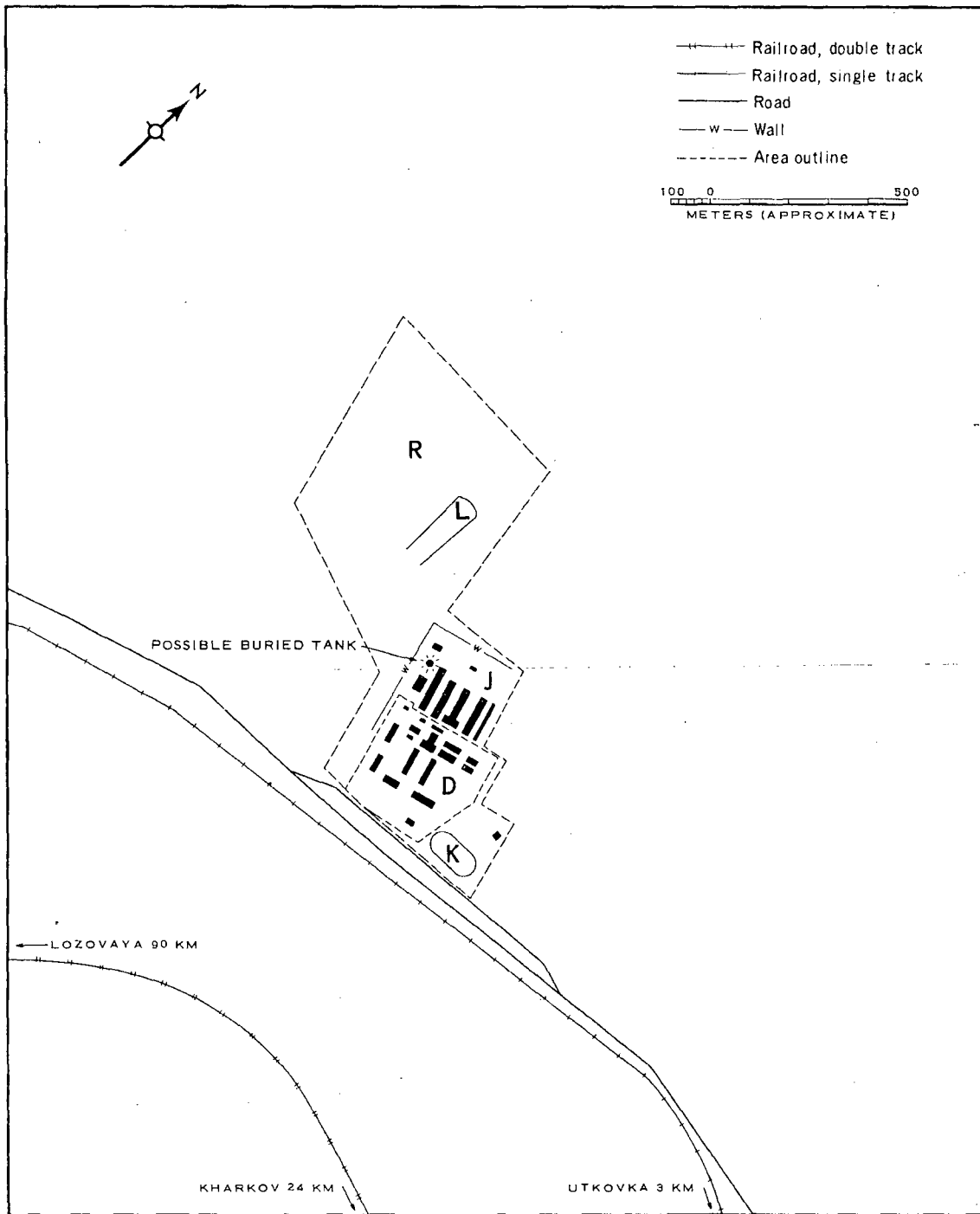


FIGURE 3. BARRACKS AREA. Sketch compiled from [redacted] December 1963.

NPIC J-6192 (1/65)

Handle Via
TALENT-KEYHOLE
Control System Only

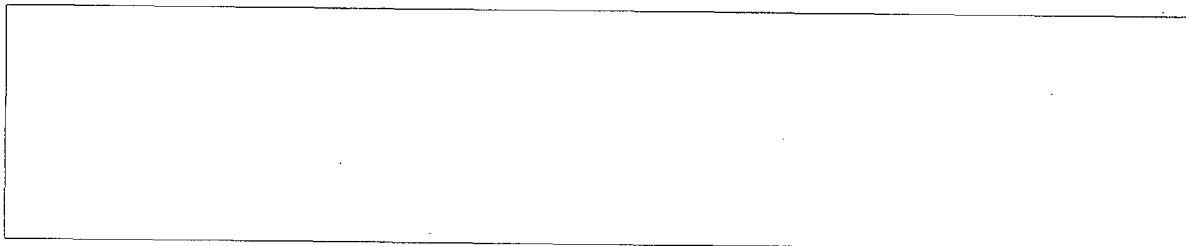
TOP SECRET CHESS RUFF

Handle Via
TALENT-KEYHOLE
Control System Only

TCS-10643/64
NPIC/R-5106/64

REFERENCES

PHOTOGRAPHY

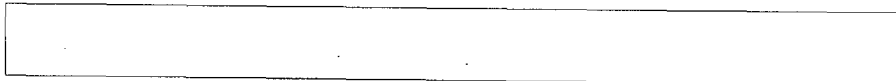


MAPS OR CHARTS

US Air Target Chart, Series 200, Sheet 0234-12HL, 3d ed, Jan 64 (SECRET)

DOCUMENTS

ARMY. PIB 193-60, *Military Installation, Utkovka, USSR*, Apr 60 (TOP SECRET CHESS)



REQUIREMENT

C-RR-4-81,614 (partial answer)

NPIC PROJECT

11627/64

TOP SECRET

TOP SECRET