

HR70-14

~~TOP SECRET~~

NPIC/R-977/64

December 1964

TCS-9038/64

Copy

6 Pages



PHOTOGRAPHIC INTERPRETATION REPORT

APPROVED FOR RELEASE -  
HISTORICAL COLLECTION  
DIVISION DATE: 06-18-2012

# SOVIET MILITARY ORDER OF BATTLE KIYEV MD



CIA



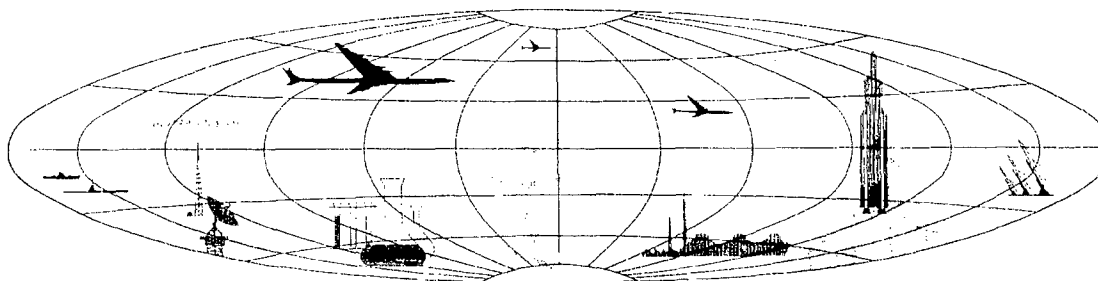
DIA

Handle Via **TALENT - KEYHOLE** Control Only

### WARNING

This document contains classified information affecting the national security of the United States within the meaning of the espionage laws U. S. Code Title 18, Sections 793 and 794. The law prohibits its transmission or the revelation of its contents in any manner to an unauthorized person, as well as its use in any manner prejudicial to the safety or interest of the United States or for the benefit of any foreign government to the detriment of the United States. It is to be seen only by personnel especially indoctrinated and authorized to receive TALENT-KEYHOLE information. Its security must be maintained in accordance with KEYHOLE and TALENT regulations.

NATIONAL PHOTOGRAPHIC INTERPRETATION CENTER



~~TOP SECRET~~

GROUP 1  
EXCLUDED FROM AUTOMATIC  
DOWNGRADING AND  
DECLASSIFICATION

PREFACE

This report is one in a series on Soviet Ground Force and logistic installations being prepared for a DIA/CIA Panel. The series is being coordinated, published and disseminated by NPIC. The photographic analysis is being performed by the NPIC Photographic Analysis Group, the CIA Photographic Intelligence Division (NPIC), and the Production Center 1P1c (DIA). The photographic analysis for this particular report was performed by the NPIC Photographic Analysis Group.

In the interest of uniformity, the titles and letter designators for the facilities observed at these installations are identical with those appearing in the project requirement. When a specific facility is not observed both its title and letter designator are omitted in the report.

Titles and letter designators for the various facilities are as follows: (A) railroad service, (B) road service, (C) landing strips, (D) administrative and troop housing areas, (E) storage areas, (F) ammunition storage areas, (G) POL storage areas, (H) other buildings and facilities, (J) equipment storage/maintenance areas, (K) athletic fields, (L) small arms firing ranges, (M) driver training areas, (N) tank/assault gun firing ranges, (P) flat trajectory firing ranges, (Q) artillery emplacements (batteries), (R) infantry or combined arms field training area or courses, (S) special training facilities, (T) unidentified facilities or tracking activity.

Handle Via  
TALENT-KEYHOLE  
Control System Only

TCS-9038/64  
NPIC/R-977/64

STORAGE AREA  
(49-47N 036-44E)  
CHUGUYEV, KHARKOVSKAYA OBLAST, USSR  
KIYEV MD

BE No:

AL No:

COMOR No:

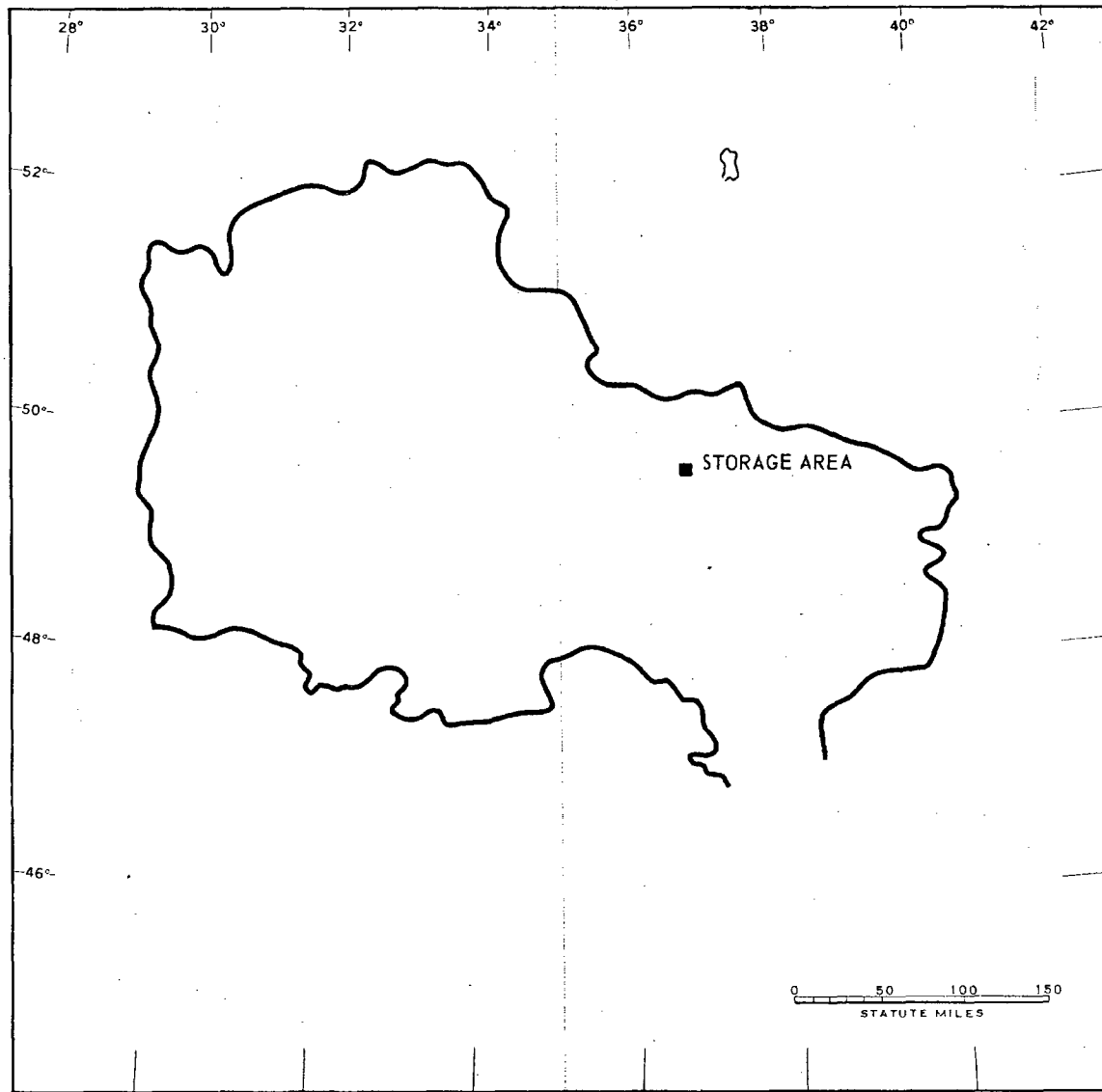


FIGURE 1. LOCATION OF STORAGE AREA.

Handle Via  
TALENT-KEYHOLE  
Control System Only

Handle Via  
TALENT-KEYHOLE  
Control System Only

TCS-9038/64  
NPIC/R-977/64

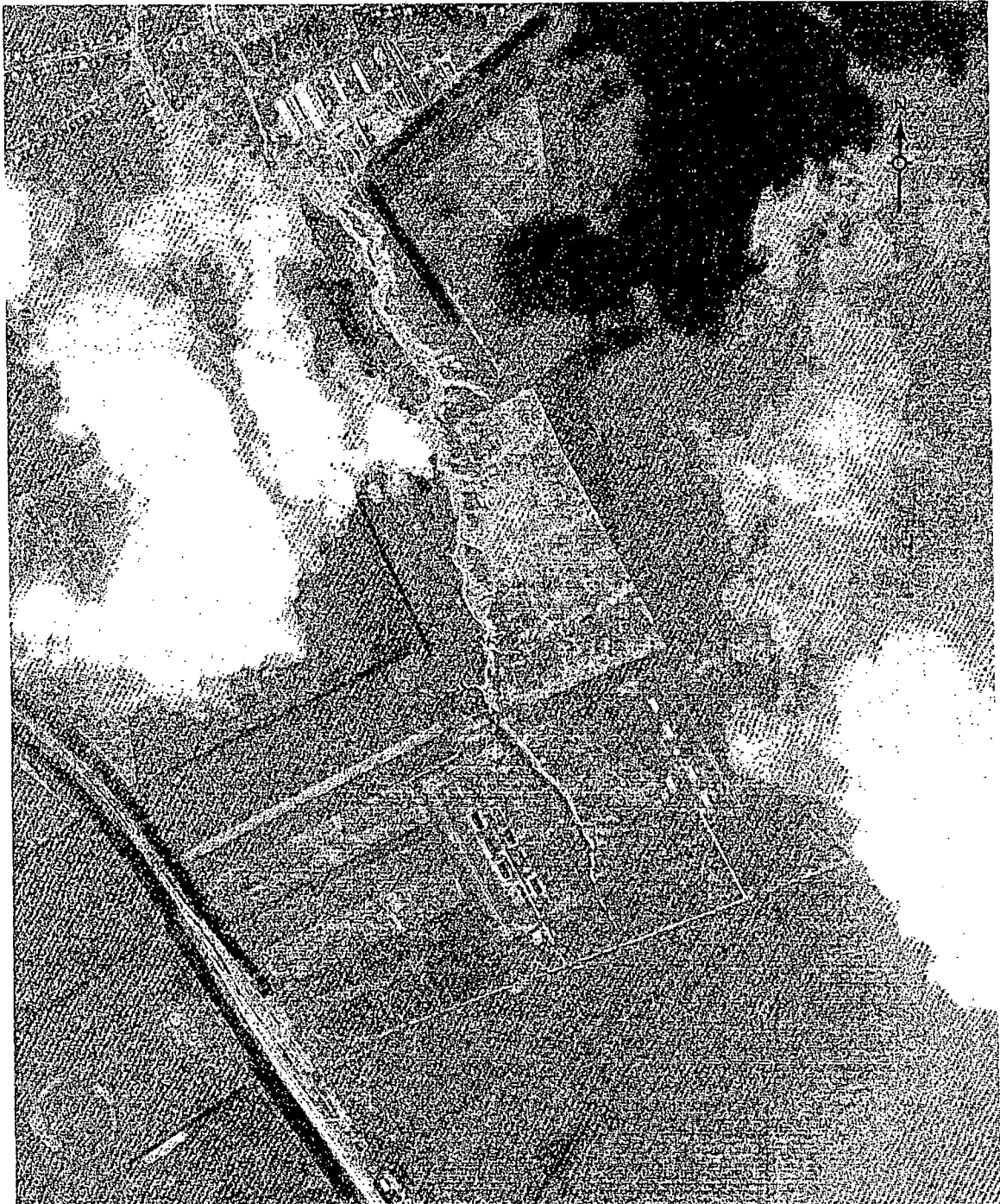


FIGURE 2. STORAGE AREA, CHUGUYEV, USSR, AUGUST 1964.

NPIC J-4027 (11/64)

Handle Via  
TALENT-KEYHOLE  
Control System Only

SUMMARY

A storage area is located 7 kilometers (km) south-southeast of Chuguyev (Figure 1) on the east side of the Chuguyev-Kupyansk rail line and immediately west of Chuguyev Training Area (TA-1). Trackage between the training area and the storage area indicates a direct association.

The installation is double secured, covers approximately 50 acres and contains 10 general

storage buildings and foundations for 3 additional buildings (Figures 2 & 3).

The area is covered by 1960 TALENT photography and 5 KEYHOLE missions between April 1962 and August 1964. The installation was not present on 1960 TALENT photography and was first observed on April 1962 photography. It has undergone no apparent change since first observed.

DESCRIPTION OF INSTALLATION

Railroad Service

The closest rail line is located 0.5 km west.

Road Service

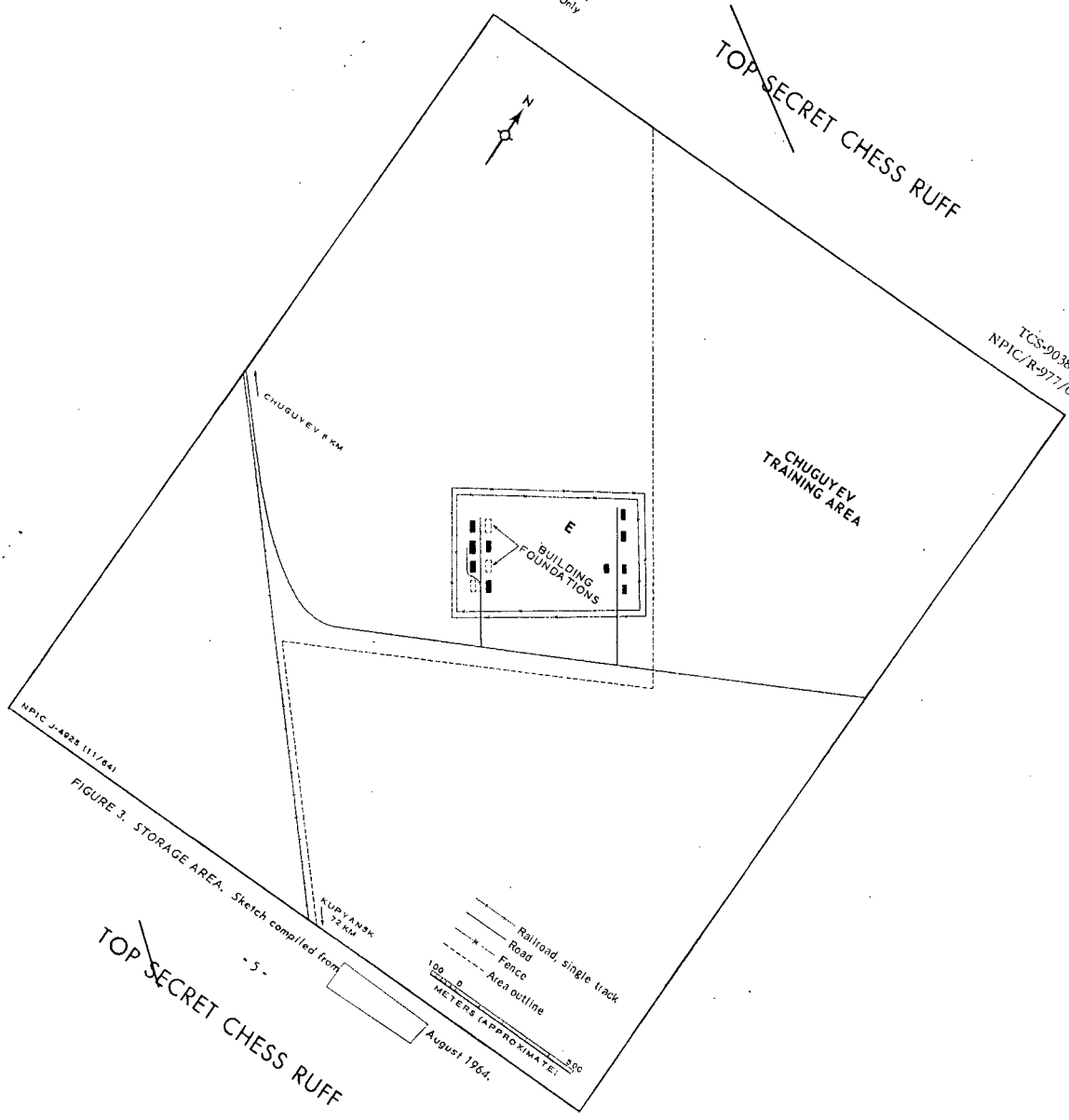
The area is served by a secondary road which connects with the Chuguyev Training Area and Chuguyev-Kupyansk Highway.

General Storage Area

Area E is double secured and contains 10 general storage buildings. Foundations for 3 buildings were observed on April 1962 coverage. There has been no construction progress through August 1964.

Handle Via  
TALENT-KEYHOLE  
Control System Only

~~TOP SECRET CHESS RUFF~~



TCS-2038/64  
NPIC/R-977/64

NPIC J-4828 (11/64)

FIGURE 3. STORAGE AREA. Sketch compiled from [redacted] August 1964.

- 5 -

~~TOP SECRET CHESS RUFF~~

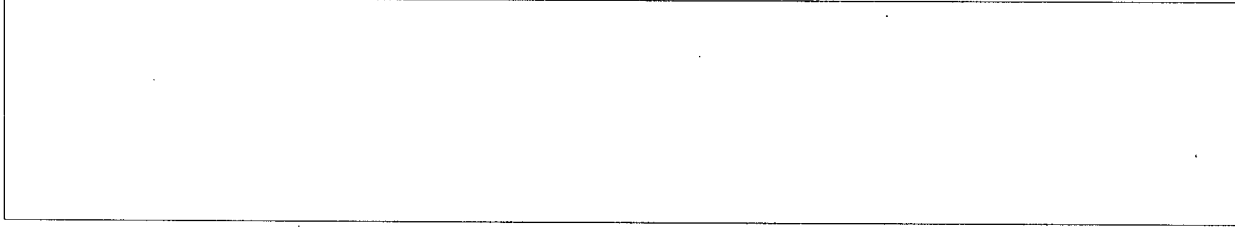
Handle Via  
TALENT-KEYHOLE  
Control System Only

Handle Via  
TALENT-KEYHOLE  
Control System Only

TCS-9038/64  
NPIC/R-977/64

REFERENCES

PHOTOGRAPHY



MAPS OR CHARTS

US Air Target Chart, Series 200, Sheet 0234-12HL, 3d ed, Jan 64 (SECRET)

REQUIREMENT

C-RR4-81,614 (partial answer)

NPIC PROJECT

N-799/64

Handle Via  
TALENT-KEYHOLE  
Control System Only

~~TOP SECRET~~

~~TOP SECRET~~