

HR70-14

NPIC/R=890/64

November 1964

~~TOP SECRET~~

TCS-8433/64

Copy 108

6 Pages

APPROVED FOR RELEASE -
HISTORICAL COLLECTION
DIVISION-HR70-14 DATE:
05-31-2012



PHOTOGRAPHIC INTERPRETATION REPORT

SOVIET MILITARY ORDER OF BATTLE KIYEV MD



CIA



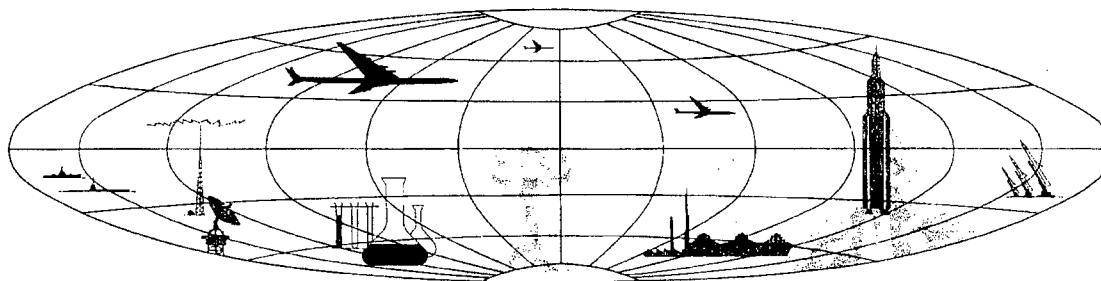
DIA

Handle Via **TALENT - KEYHOLE** Control Only

WARNING

This document contains classified information affecting the national security of the United States within the meaning of the espionage laws U. S. Code Title 18, Sections 793 and 794. The law prohibits its transmission or the revelation of its contents in any manner to an unauthorized person, as well as its use in any manner prejudicial to the safety or interest of the United States or for the benefit of any foreign government to the detriment of the United States. It is to be seen only by personnel especially indoctrinated and authorized to receive TALENT-KEYHOLE information. Its security must be maintained in accordance with KEYHOLE and TALENT regulations.

NATIONAL PHOTOGRAPHIC INTERPRETATION CENTER



~~TOP SECRET~~

GROUP 1
Excluded from automatic
downgrading and declassification

PREFACE

This report is one in a series on Soviet Ground Force and logistic installations being prepared for a DIA/CIA Panel. The series is being coordinated, published and disseminated by NPIC. The photographic analysis is being performed by the NPIC Photographic Analysis Group, the CIA Photographic Intelligence Division (NPIC), and the Production Center 1P1c (DIA). The photographic analysis for this particular report was performed by the NPIC Photographic Analysis Group.

In the interest of uniformity, the titles and letter designators for the facilities observed at these installations are identical with those appearing in the project requirement. When a specific facility is not observed both its title and letter designator are omitted in the report.

Titles and letter designators for the various facilities are as follows: (A) railroad service, (B) road service, (C) landing strips, (D) administrative and troop housing areas, (E) storage areas, (F) ammunition storage areas, (G) POL storage areas, (H) other buildings and facilities, (J) equipment storage/maintenance areas, (K) athletic fields, (L) small arms firing ranges, (M) driver training areas, (N) tank/assault gun firing ranges, (P) flat trajectory firing ranges, (Q) artillery emplacements (batteries), (R) infantry or combined arms field training area or courses, (S) special training facilities, (T) unidentified facilities or tracking activity.

Handle Via
TALENT-KEYHOLE
Control System Only

TCS-8433/64
NPIC/R-890/64

SECURED STORAGE AREA
(49-53N 036-14E)
KHARKOV, KHARKOVSKAYA OBLAST, USSR
KIYEV MD

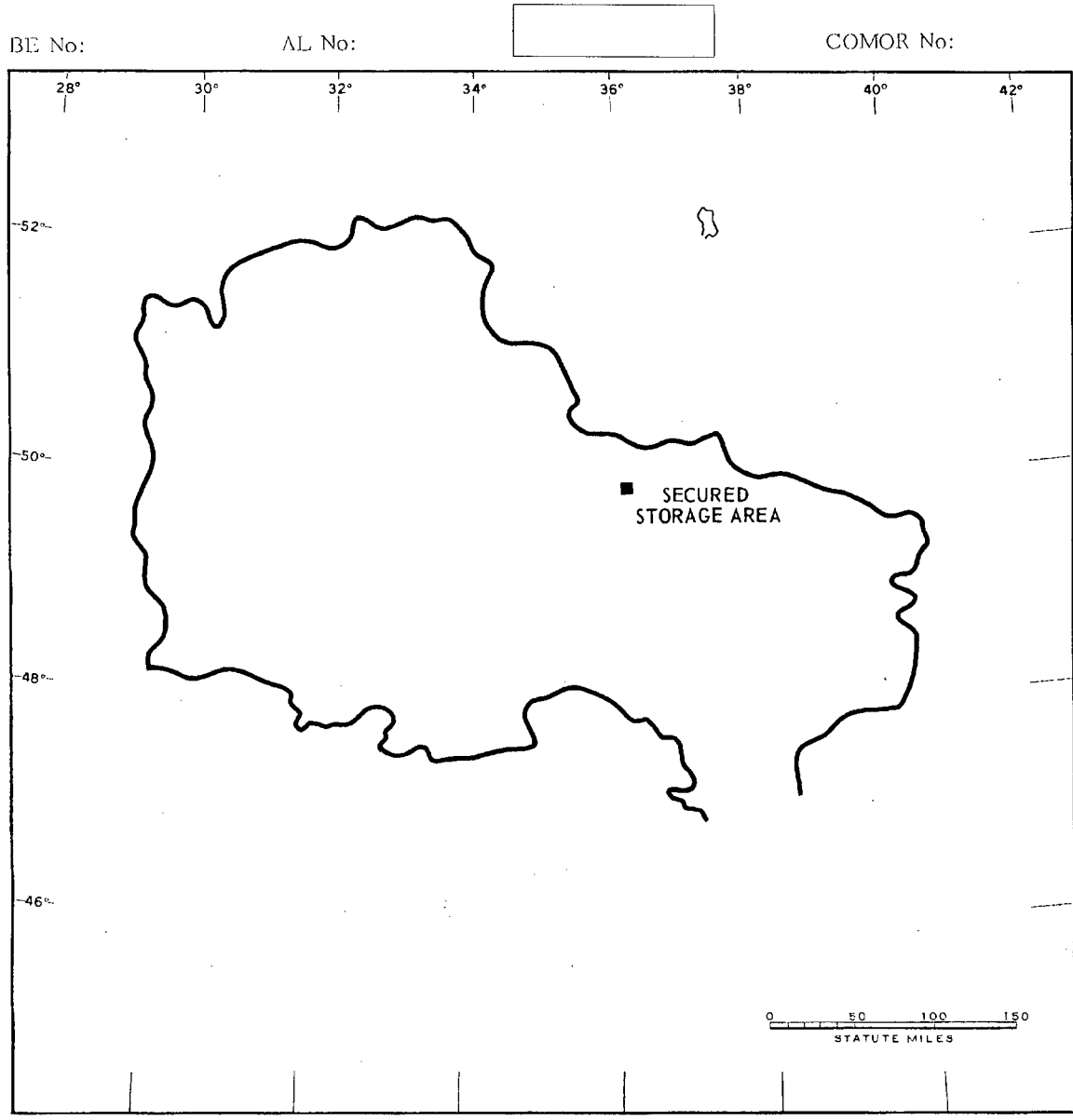


FIGURE 1. SECURED STORAGE AREA, KHARKOV.

NPIC J-4536 (10/64)

Handle Via
TALENT-KEYHOLE
Control System Only

Handle Via
TALENT-KEYHOLE
Control System Only

TCS-8433/64
NPIC/R-890/64

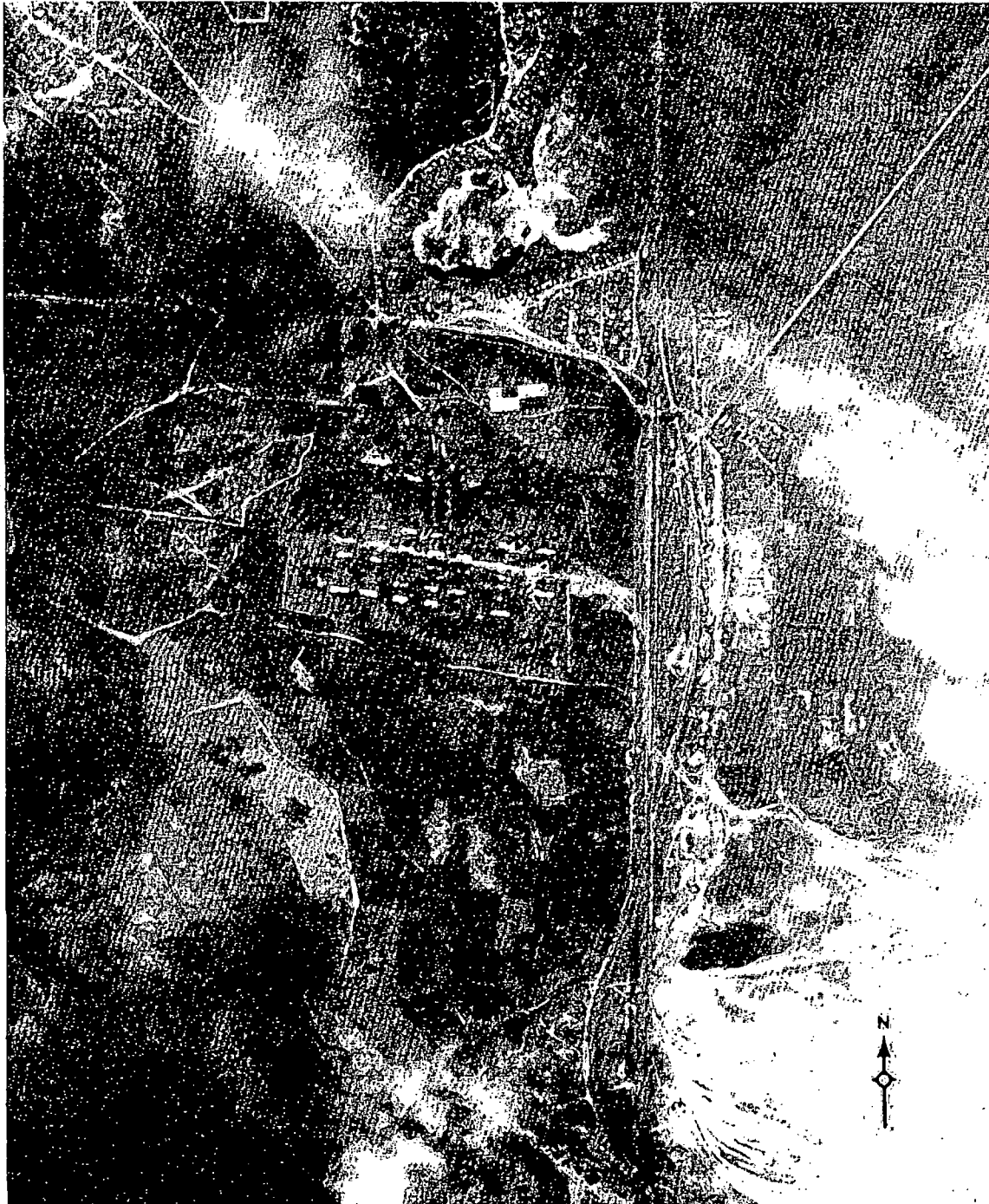


FIGURE 2. SECURED STORAGE AREA, KHARKOV, USSR, AUGUST 1964.

NPIC J-4637 (110/64)

Handle Via
TALENT-KEYHOLE
Control System Only

SUMMARY

A double-secured storage area is located 10 kilometers (km) south of the center of Kharkov (Figure 1).

The installation covers approximately 60 acres and contains 26 general storage buildings and one support building. An unsecured support area immediately north contains one probable administration building, one probable barracks,

and one support building (Figures 2 and 3). The military significance of this installation cannot be determined.

The area is covered by 1960 TALENT photography and 7 KEYHOLE missions between April 1962 and August 1964. Six storage buildings were removed between February 1960 and August 1964.

DESCRIPTION OF INSTALLATION

Railroad Service

A spur from the Kharkov-Lozovaya and Kharkov-Chuguyev rail lines serves the area.

Road Service

The area is served by secondary roads connecting with Kharkov.

Administrative and Troop Housing Area

Area D contains one probable administration

building, one probable barracks, and one support building, and provides support for the storage area.

General Storage Area

Area E contains 26 general storage buildings and one support building (probably security). Thirty-two buildings were observed on February 1960 coverage. Three buildings had been removed by November 1962 and 3 more removed by August 1964.

Handle Via
TALENT-KEYHOLE
Control System Only

TCS-8433/64
NPIC/R-890/64

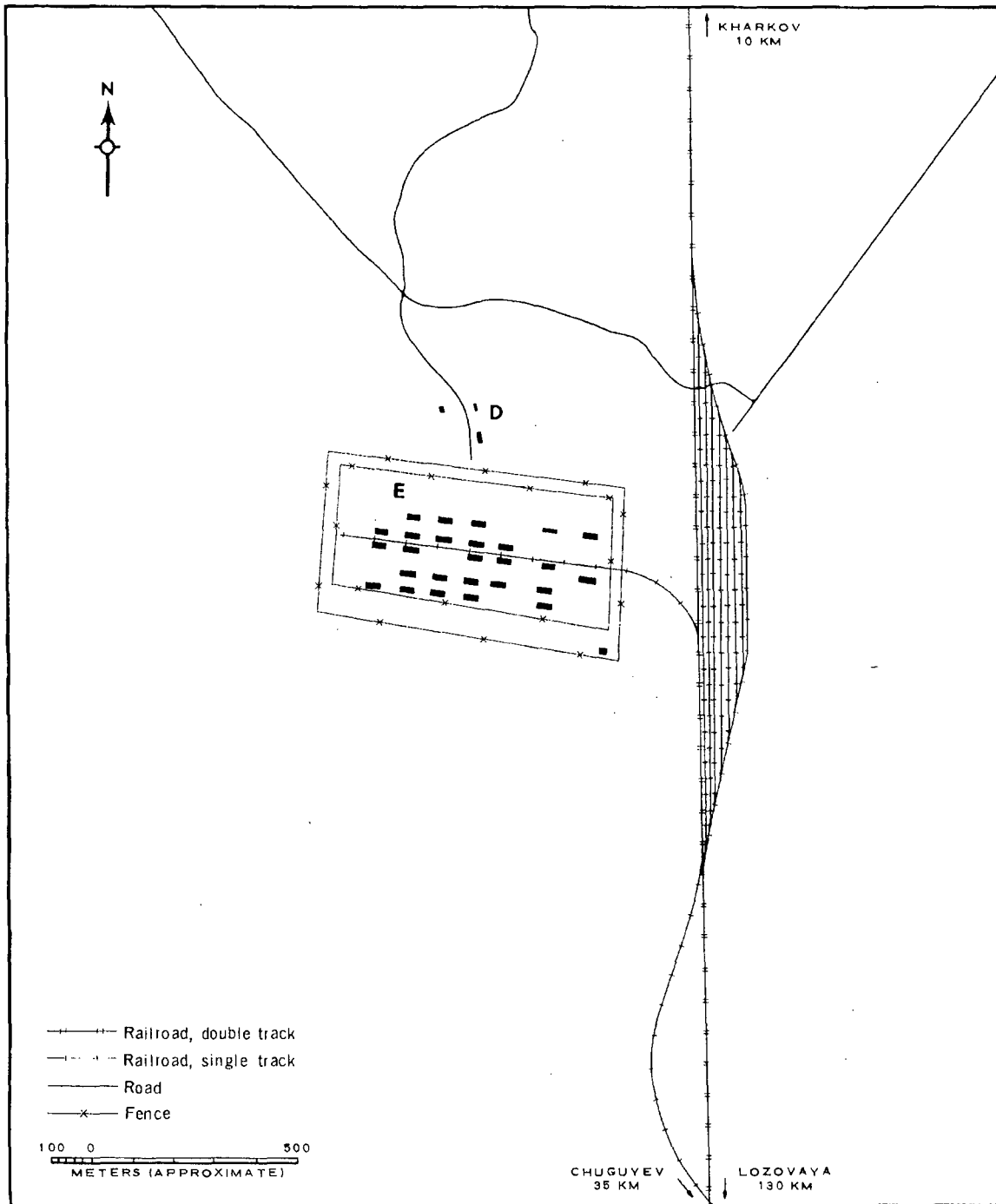


FIGURE 3. SECURED STORAGE AREA, KHARKOV. Sketch compiled from NPIC J-4538 (10/64) August 1964.

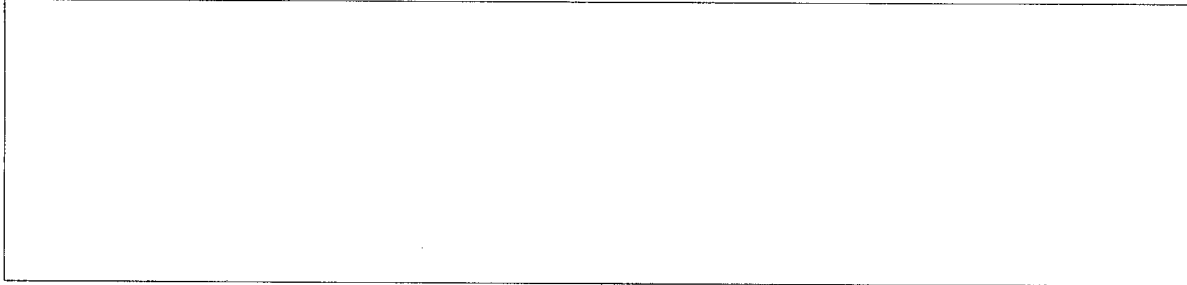
Handle Via
TALENT-KEYHOLE
Control System Only

Handle Via
TALENT-KEYHOLE
Control System Only

TCS-8433/64
NPIC/R-890/64

REFERENCES

PHOTOGRAPHY



MAPS OR CHARTS

US Air Target Chart, Series 200, Sheet 0234-12III, 3d ed, Jan 64 (SECRET)

REQUIREMENT

C-RR4-81,614 (partial answer)

NPIC PROJECT

N-799/64

Handle Via
TALENT-KEYHOLE
Control System Only

~~TOP SECRET~~

~~TOP SECRET~~