

HR70-14

~~TOP SECRET~~

NPIC/R-889/64

November 1964

TCS-8432/64

Copy 108

6 Pages



APPROVED FOR RELEASE -
HISTORICAL COLLECTION
DIVISION-HR70-14 DATE:
05-31-2012

PHOTOGRAPHIC INTERPRETATION REPORT

SOVIET MILITARY ORDER OF BATTLE KIYEV MD



CIA



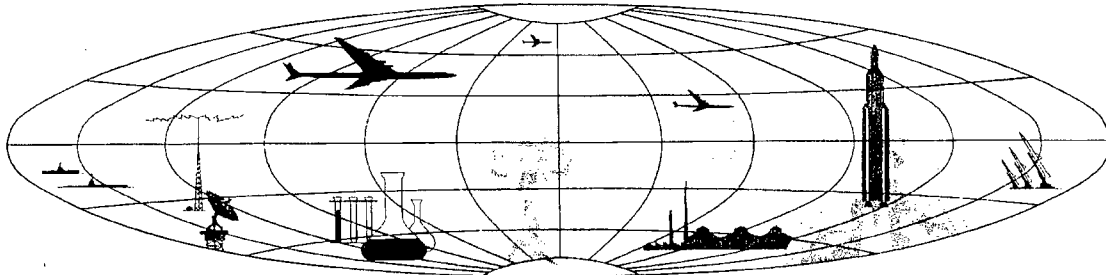
DIA

Handle Via **TALENT - KEYHOLE** Control Only

WARNING

This document contains classified information affecting the national security of the United States within the meaning of the espionage laws U. S. Code Title 18, Sections 793 and 794. The law prohibits its transmission or the revelation of its contents in any manner to an unauthorized person, as well as its use in any manner prejudicial to the safety or interest of the United States or for the benefit of any foreign government to the detriment of the United States. It is to be seen only by personnel especially indoctrinated and authorized to receive TALENT-KEYHOLE information. Its security must be maintained in accordance with KEYHOLE and TALENT regulations.

NATIONAL PHOTOGRAPHIC INTERPRETATION CENTER



~~TOP SECRET~~

GROUP 1
Excluded from automatic
downgrading and declassification

~~TOP SECRET CHESS RUFF~~

Handle Via
TALENT-KEYHOLE
Control System Only

TCS-8432/64
NPIC/R-889/64

PREFACE

This report is one in a series on Soviet Ground Force and logistic installations being prepared for a DIA/CIA Panel. The series is being coordinated, published and disseminated by NPIC. The photographic analysis is being performed by the NPIC Photographic Analysis Group, the CIA Photographic Intelligence Division (NPIC), and the Production Center 1P1c (DIA). The photographic analysis for this particular report was performed by the NPIC Photographic Analysis Group.

In the interest of uniformity, the titles and letter designators for the facilities observed at these installations are identical with those appearing in the project requirement. When a specific facility is not observed both its title and letter designator are omitted in the report.

Titles and letter designators for the various facilities are as follows: (A) railroad service, (B) road service, (C) landing strips, (D) administrative and troop housing areas, (E) storage areas, (F) ammunition storage areas, (G) POL storage areas, (H) other buildings and facilities, (J) equipment storage/maintenance areas, (K) athletic fields, (L) small arms firing ranges, (M) driver training areas, (N) tank/assault gun firing ranges, (P) flat trajectory firing ranges, (Q) artillery emplacements (batteries), (R) infantry or combined arms field training area or courses, (S) special training facilities, (T) unidentified facilities or tracking activity.

- 1 -

~~TOP SECRET CHESS RUFF~~

Handle Via
TALENT-KEYHOLE
Control System Only

Handle Via
TALENT-KEYHOLE
Control System Only

TCS-8432/64
NPIC/R-889/64

SECURED STORAGE AREA
(49-32N 034-52E)
POLTAVA, POLTAVSKAYA OBLAST', USSR
KIYEV MD

BE No:

AL No:



COMOR No:

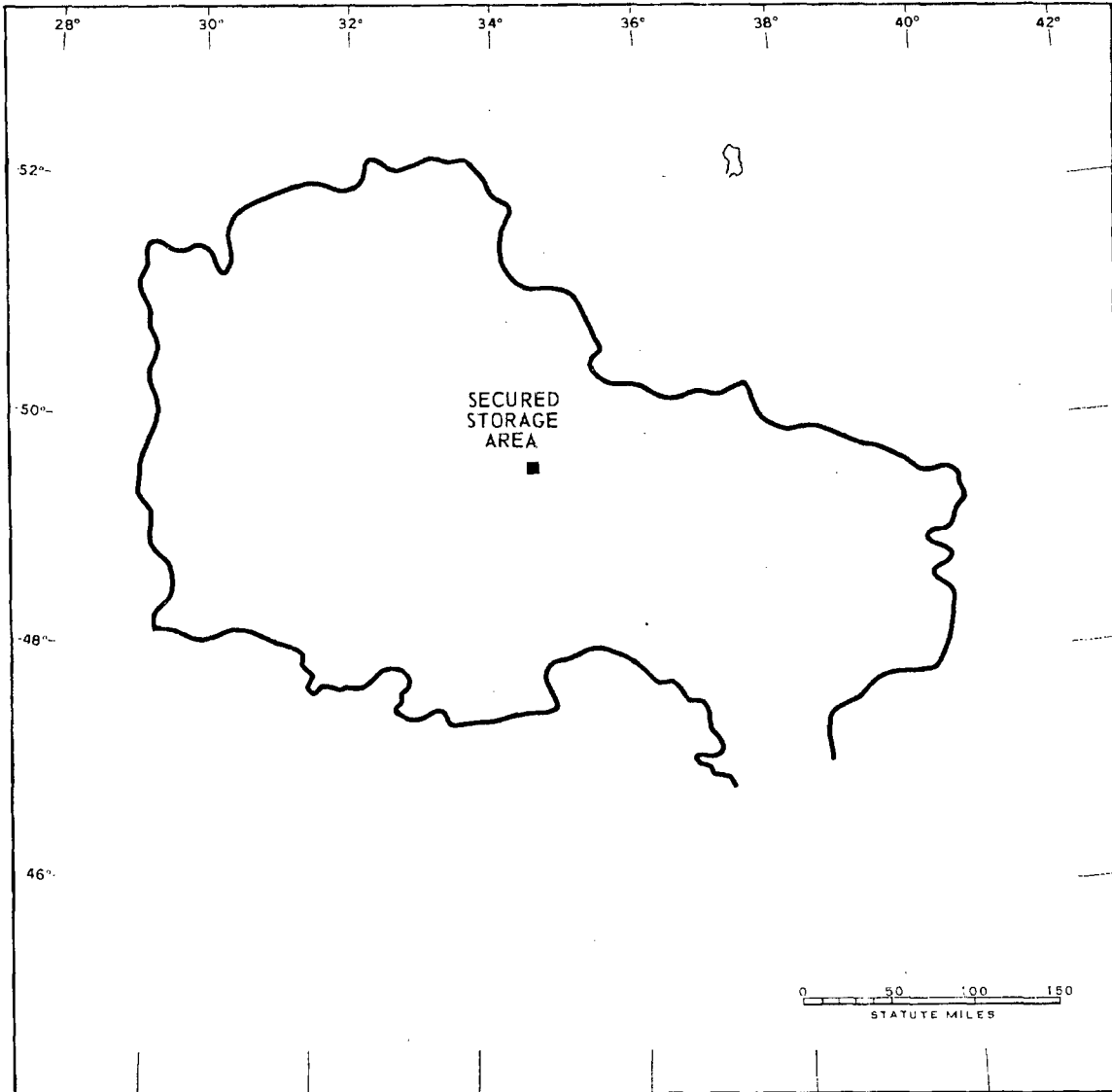


FIGURE 1. SECURED STORAGE AREA, POLTAVA, USSR.

NPIC J-4899 (10/64)

Handle Via
TALENT-KEYHOLE
Control System Only

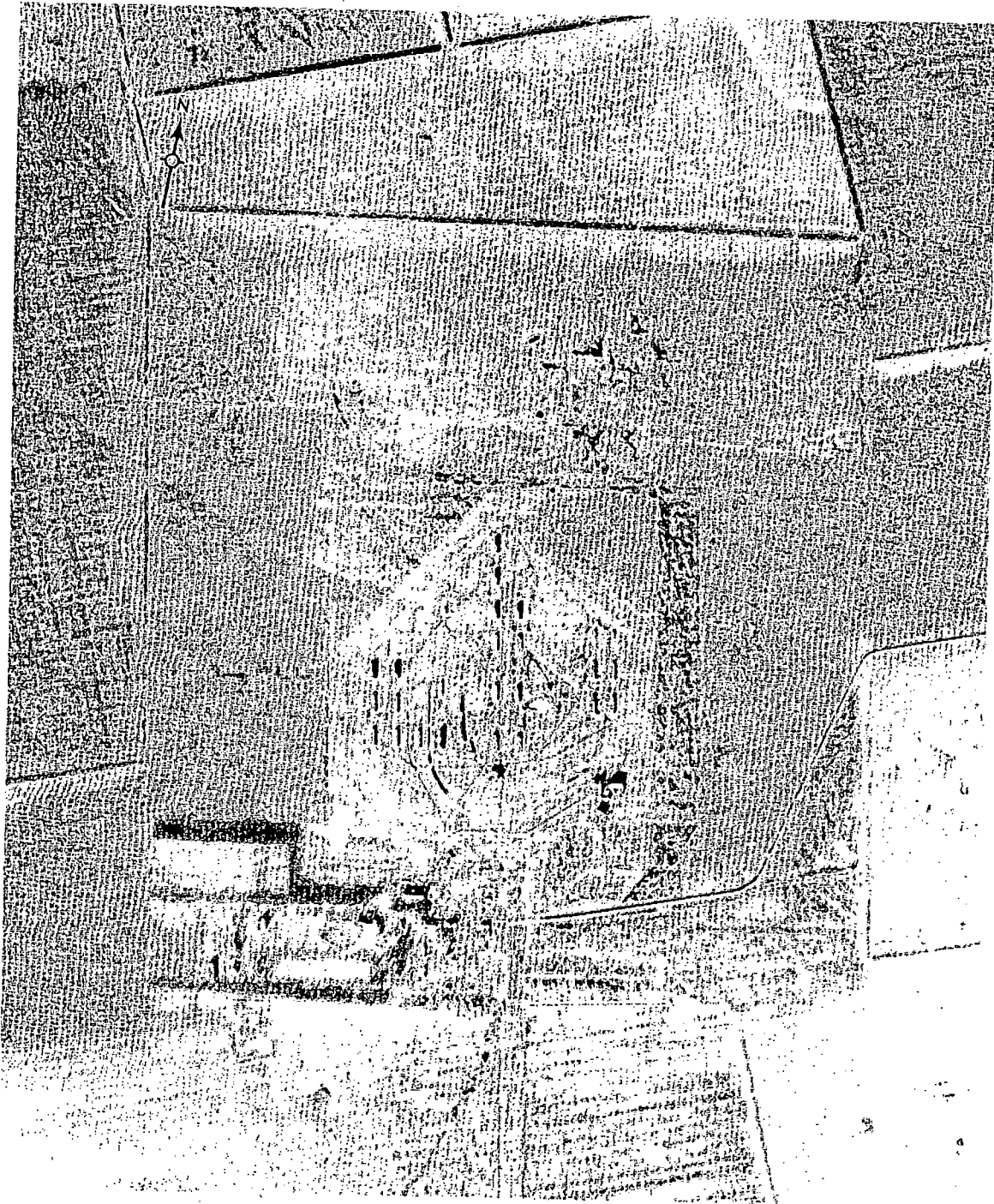


FIGURE 2. SECURED STORAGE AREA, POLTAVA, USSR, DECEMBER 1962.

NPIC J-4804 (10/64)

SUMMARY

A double-secured storage area is located 24 kilometers (km) east-southeast of Poltava (Figure 1).

The installation, consisting of a secured storage area and adjacent support area, covers approximately 300 acres and contains a total of 43 buildings as follows: 6 barracks, 2 administration buildings, 25 storage buildings, 9 sup-

port buildings, and a heating plant (Figures 2 and 3). The military significance of this installation cannot be determined.

The area was covered by a TALENT mission in 1960 and 5 KEYHOLE missions between April 1962 and June 1964. Comparative analysis indicates that the installation is active. No significant changes were observed.

DESCRIPTION OF INSTALLATION

Railroad Service

A spur off the Poltava-Krasnograd rail line enters the installation and forms five sub-spurs for a well-defined internal rail service.

Road Service

A good, probable all-weather, secondary road connects this installation to the Poltava-Krasnograd highway.

Administrative and Troop Housing Area

Area D contains 2 administration buildings, 6 barracks, and 7 support buildings, and is the support area for the secured storage installation.

General Storage Area

Area E contains 25 storage buildings, 2 support buildings (one of which was added between February 1960 and April 1962), and a heating plant.

Handle Via
TALENT-KEYHOLE
Control System Only

TCS-8432/64
NPIC/R-889/64

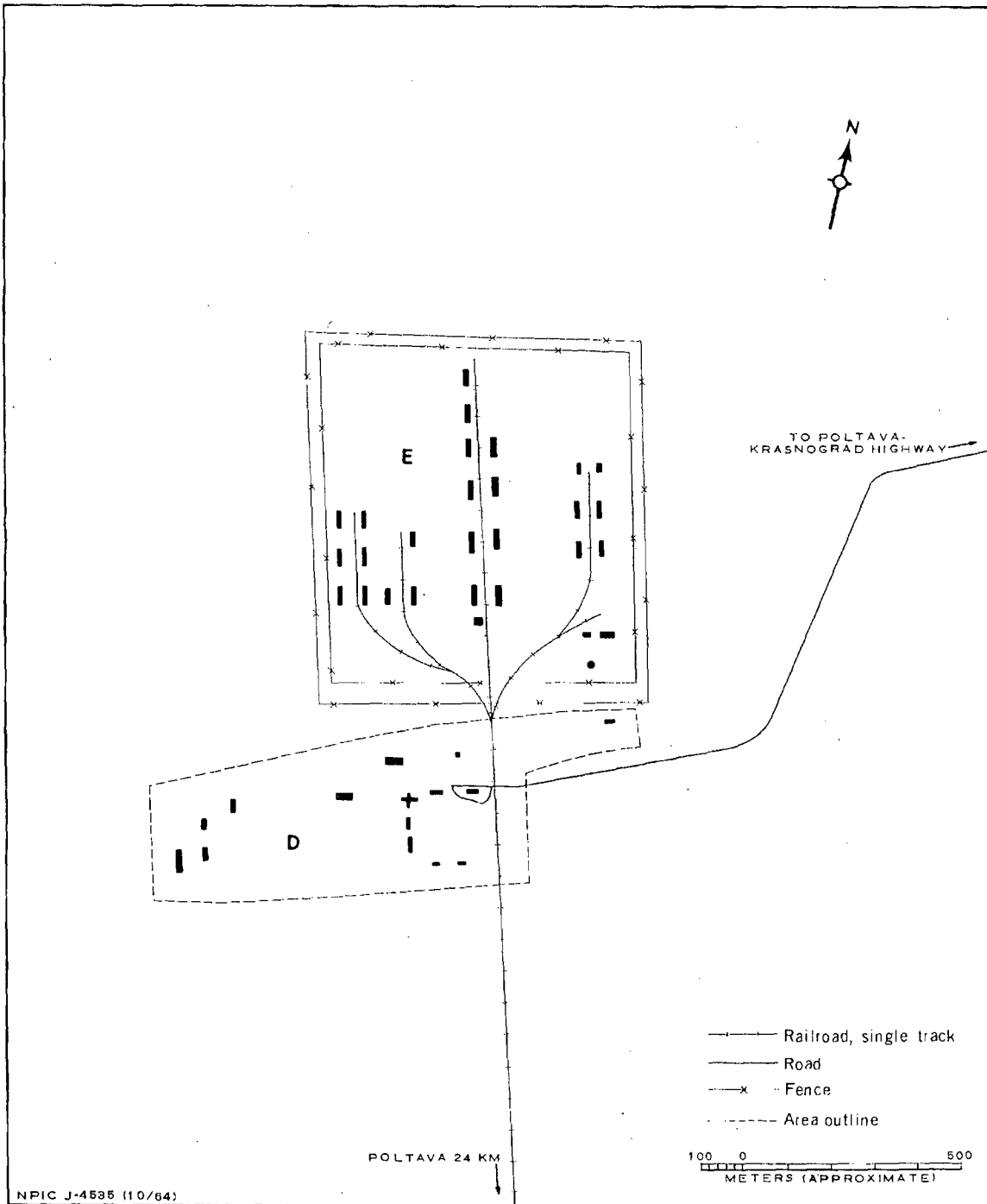


FIGURE 3. SECURED STORAGE AREA, POLTAVA. Sketch compiled from [redacted] December 1963.

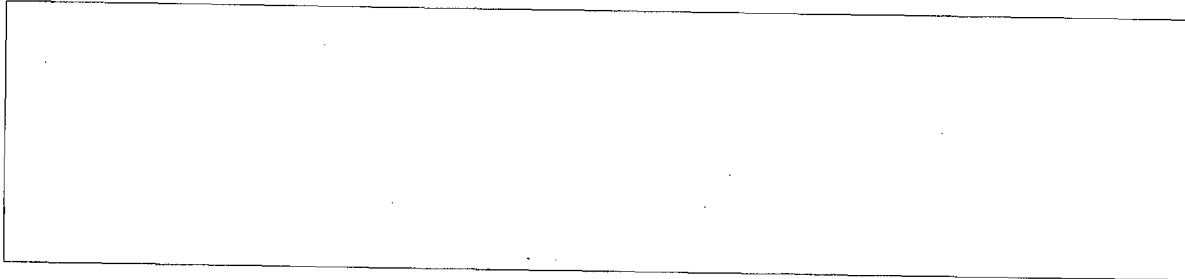
Handle Via
TALENT-KEYHOLE
Control System Only

Handle Via
TALENT-KEYHOLE
Control System Only

TCS-8432/64
NPIC/R-889/64

REFERENCES

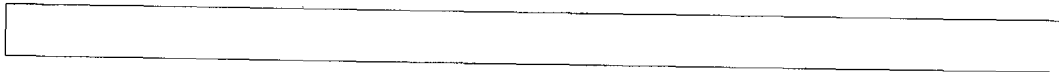
PHOTOGRAPHY



MAPS OR CHARTS

US Air Target Chart, Series 200, Sheet 0234-16HL, 3rd ed, Mar 64 (SECRET)

DOCUMENTS



REQUIREMENT

C-RR1-S1,611 (partial answer)

NPIC PROJECT

X-799 764

Handle Via
TALENT-KEYHOLE
Control System Only

~~TOP SECRET~~

~~TOP SECRET~~