

HR70-14

~~TOP SECRET~~

NPIC/R-898/64

November 1964

TCS-8441/64

Copy 100

6 Pages

APPROVED FOR RELEASE  
- HISTORICAL  
COLLECTION  
DIVISION-HR70-14 DATE:  
05-31-2012



PHOTOGRAPHIC INTERPRETATION REPORT

# SOVIET MILITARY ORDER OF BATTLE KIYEV MD



CIA



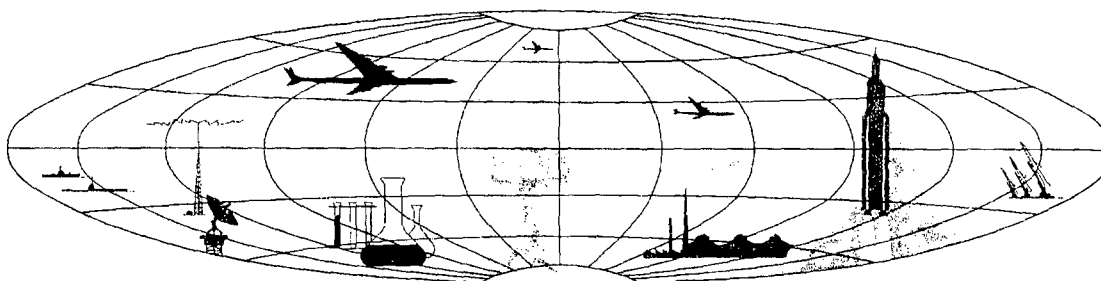
DIA

Handle Via **TALENT - KEYHOLE** Control Only

WARNING

This document contains classified information affecting the national security of the United States within the meaning of the espionage laws U. S. Code Title 18, Sections 793 and 794. The law prohibits its transmission or the revelation of its contents in any manner to an unauthorized person, as well as its use in any manner prejudicial to the safety or interest of the United States or for the benefit of any foreign government to the detriment of the United States. It is to be seen only by personnel especially indoctrinated and authorized to receive TALENT-KEYHOLE information. Its security must be maintained in accordance with KEYHOLE and TALENT regulations.

NATIONAL PHOTOGRAPHIC INTERPRETATION CENTER



~~TOP SECRET~~

GROUP 1  
Excluded from automatic  
downgrading and declassification

~~TOP SECRET RUFF~~

Handle Via  
TALENT-KEYHOLE  
Control System Only

TCS-8441/64  
NPIC/R-898/64

## PREFACE

This report is one in a series on Soviet Ground Force and logistic installations being prepared for a DIA/CIA Panel. The series is being coordinated, published and disseminated by NPIC. The photographic analysis is being performed by the NPIC Photographic Analysis Group, the CIA Photographic Intelligence Division (NPIC), and the Production Center 1P1c (DIA). The photographic analysis for this particular report was performed by the NPIC Photographic Analysis Group.

In the interest of uniformity, the titles and letter designators for the facilities observed at these installations are identical with those appearing in the project requirement. When a specific facility is not observed both its title and letter designator are omitted in the report.

Titles and letter designators for the various facilities are as follows: (A) railroad service, (B) road service, (C) landing strips, (D) administrative and troop housing areas, (E) storage areas, (F) ammunition storage areas, (G) POL storage areas, (H) other buildings and facilities, (J) equipment storage/maintenance areas, (K) athletic fields, (L) small arms firing ranges, (M) driver training areas, (N) rank/assault gun firing ranges, (P) flat trajectory firing ranges, (Q) artillery emplacements (batteries), (R) infantry or combined arms field training area or courses, (S) special training facilities, (T) unidentified facilities or tracking activity.

- 1 -

~~TOP SECRET RUFF~~

Handle Via  
TALENT-KEYHOLE  
Control System Only

~~TOP SECRET RUFF~~

Handle Via  
TALENT-KEYHOLE  
Control System Only

TCS-8441/64  
NPIC/R-898/64

PRILUKI AMMUNITION DEPOT ICHNYA SSW

(50-47N 032-19E)

PRILUKI, CHERNIGOVSKAYA OBLAST, USSR

KIYEV MD

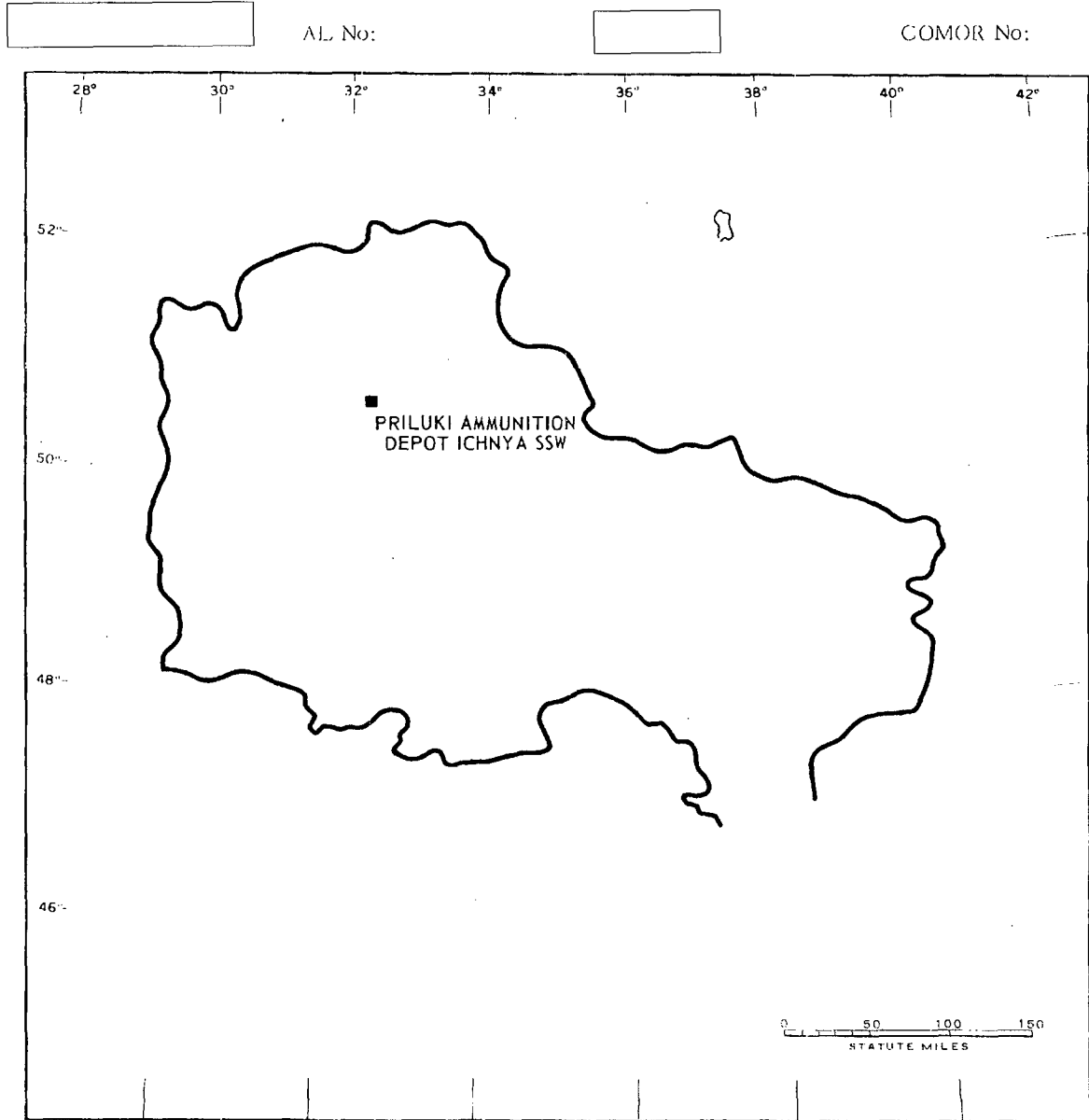


FIGURE 1. LOCATION OF PRILUKI AMMUNITION DEPOT ICHNYA SSW.

- 2 -

~~TOP SECRET RUFF~~

Handle Via  
TALENT-KEYHOLE  
Control System Only

Handle Via  
TALENT-KEYHOLE  
Control System Only

TCS-8441/64  
NPIC/R-898/64

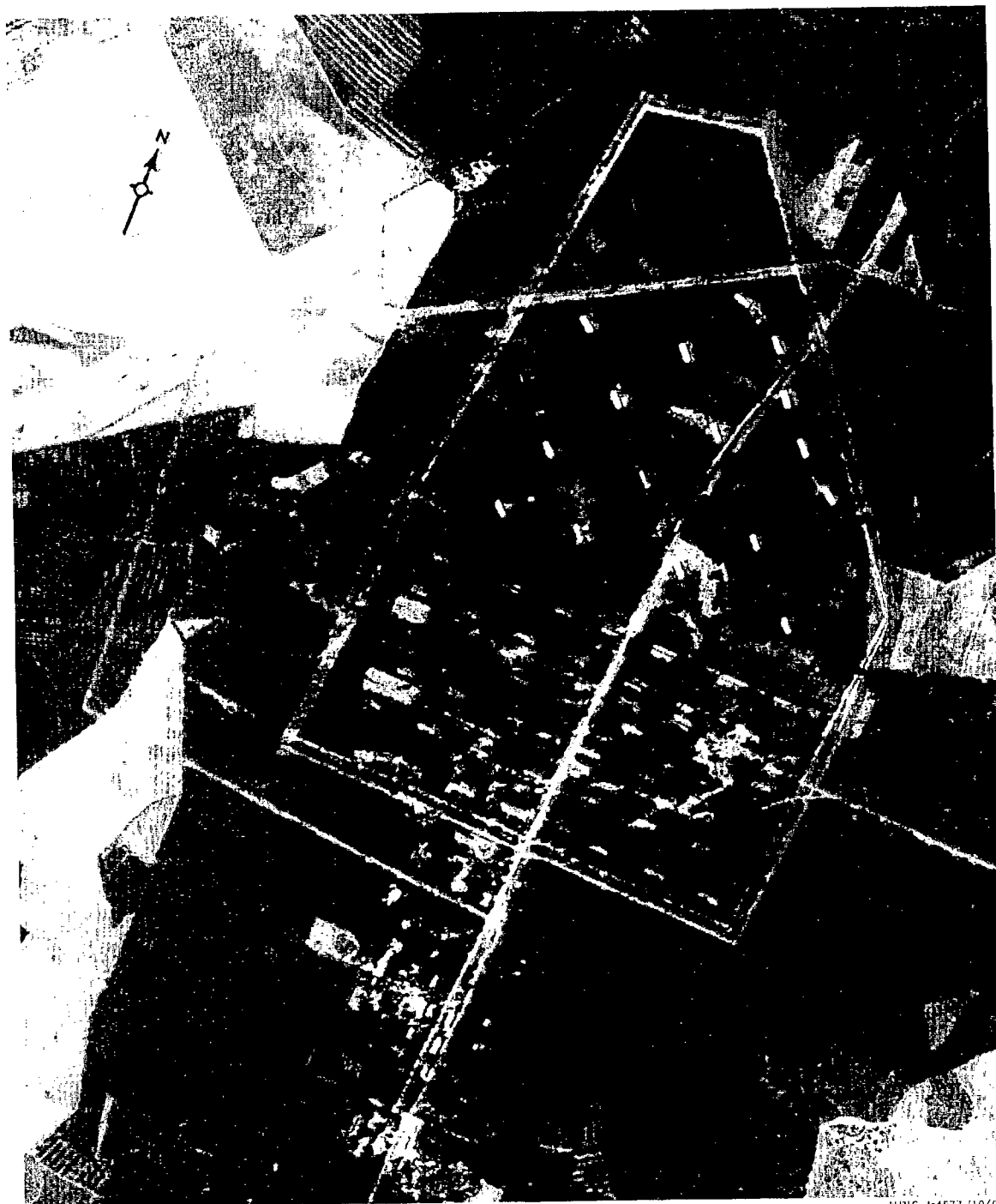


FIGURE 2. PRILUKI AMMUNITION DEPOT ICHNYA SSW, JUNE 1964.

NPIC 3-4577 (10/64)

Handle Via  
TALENT-KEYHOLE  
Control System Only

SUMMARY

Priluki Ammunition Depot Ichnya SSW is located 23 kilometers (km) north-northwest of Priluki and 8.6 km south-southwest of Ichnya (Figure 1).

The installation covers approximately 730 acres and contains a total of 117 buildings, including 3 administration, 5 barracks, 61 storage, 46 general support and 2 probable ve-

hicle maintenance buildings (Figures 2 and 3).

The installation is covered by 11 KEYHOLE missions between June 1961 and August 1964. Comparative analysis of photography indicates that the level of activity is constant throughout the year, and that no significant changes have been made in the installation during the period of photo coverage.

DESCRIPTION OF INSTALLATION

Railroad Service

A spur line from the main Priluki-Bakhmach rail line serves the installation. A spur to the storage area branches into 2 tracks just prior to entering the installation. Each track has a covered loading dock, one 155 feet long and one 125 feet long.

Road Service

An all-weather, probably graveled road connects the installation with the secondary road pattern in the vicinity and with the primary road between Priluki and Ichnya.

Administrative and Troop Housing Areas

Area D1 contains one administration, 2 barracks and 3 general support buildings. This area appears to be a support facility for the ammunition depot and is separated by fencing from Area D2.

Area D2 contains 2 administration, 3 barracks and 33 general support buildings. This area is also a support facility for the ammunition depot.

Ammunition Storage Area

Area E contains 61 storage and 10 support buildings.

Equipment Storage/Maintenance Areas

Area J1 contains a 220- by 30-foot maintenance building and a 310- by 160-foot parking area.

Area J2 contains a 120- by 30-foot maintenance building and a 430- by 180-foot parking area.

Athletic Field

Area K is possibly an athletic area.

Handle Via  
TALENT-KEYHOLE  
Control System Only

TCS-8441/64  
NPIC/R-898/64

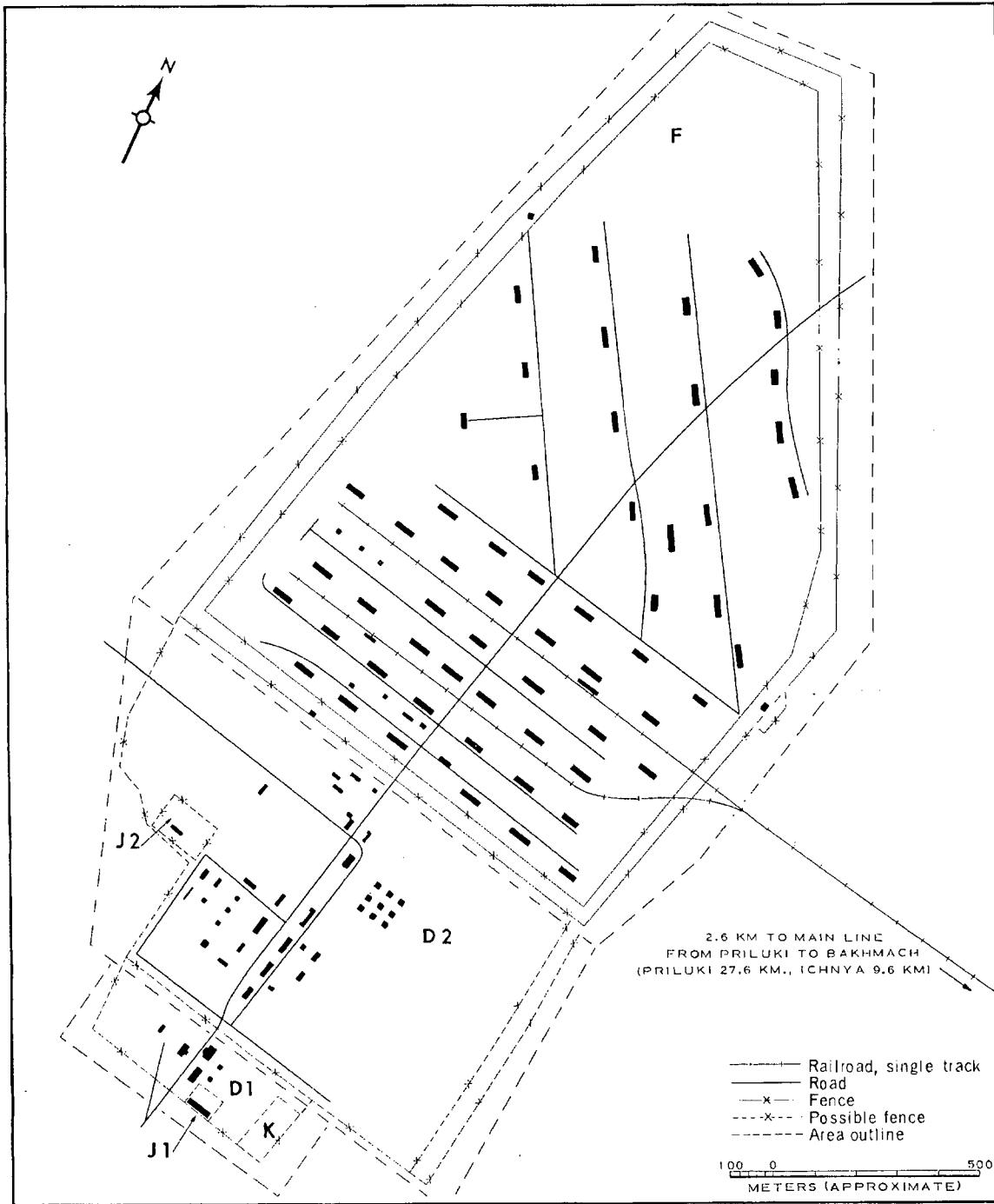


FIGURE 3. PRILUKI AMMUNITION DEPOT ICHNYA SSW. Sketch compiled from [redacted], December 1963.

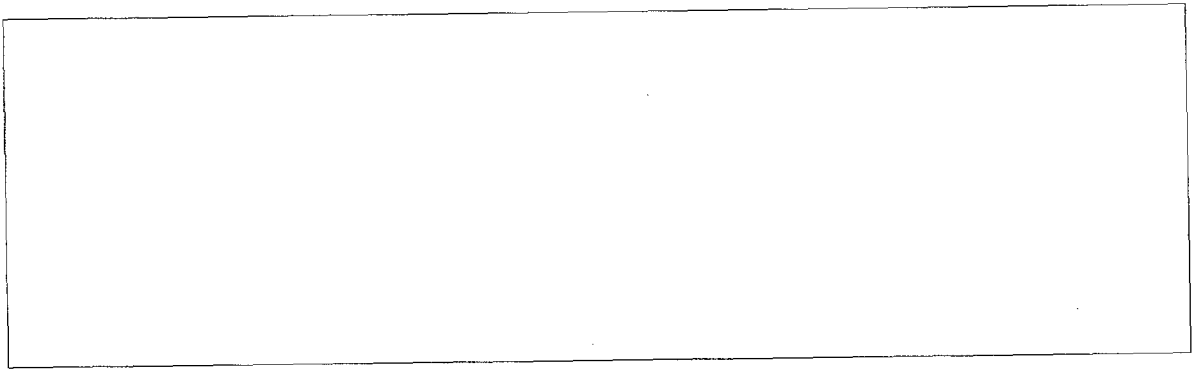
Handle Via  
TALENT-KEYHOLE  
Control System Only

Handle Via  
TALENT-KEYHOLE  
Control System Only

TCS-8441/64  
NPIC/R-898/64

REFERENCES

PHOTOGRAPHY



MAPS OR CHARTS

U.S. Air Target Chart, Series 200, Sheet 0233-10HL, 2d ed, Jun 62 (SECRET)

DOCUMENTS

Army, PIB-TK-82-62, 23 Jul 62 (TOP SECRET RUFF)

REQUIREMENT

C-BRI-81,614 (partial answer)

NPIC PROJECT

N-799,61

Handle Via  
TALENT-KEYHOLE  
Control System Only

~~TOP SECRET~~

~~TOP SECRET~~