

HR70-14

~~TOP SECRET~~

NPIC/R-993/64

November 1964

TCS-9055/64

Copy 1008

6 Pages



PHOTOGRAPHIC INTERPRETATION REPORT

SOVIET MILITARY ORDER OF BATTLE BALTIC MD

APPROVED FOR
RELEASE -
HISTORICAL
COLLECTION
DIVISION - HR70-14
DATE: 05-10-2012



CIA



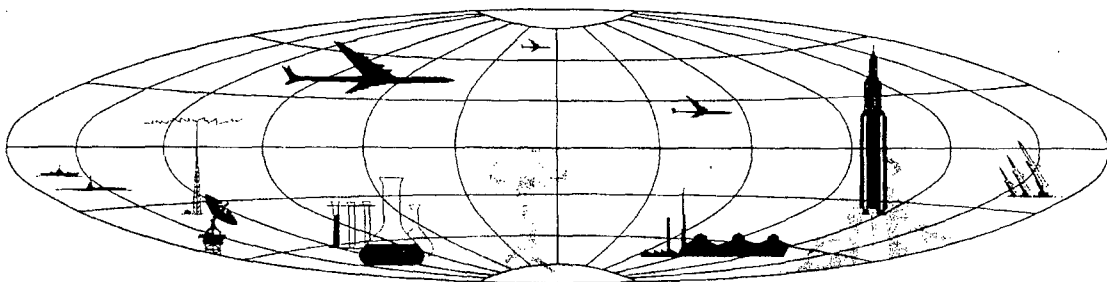
DIA

Handle Via **TALENT - KEYHOLE** Control Only

WARNING

This document contains classified information affecting the national security of the United States within the meaning of the espionage laws U. S. Code Title 18, Sections 793 and 794. The law prohibits its transmission or the revelation of its contents in any manner to an unauthorized person, as well as its use in any manner prejudicial to the safety or interest of the United States or for the benefit of any foreign government to the detriment of the United States. It is to be seen only by personnel especially indoctrinated and authorized to receive TALENT-KEYHOLE information. Its security must be maintained in accordance with KEYHOLE and TALENT regulations.

NATIONAL PHOTOGRAPHIC INTERPRETATION CENTER



~~TOP SECRET~~

GROUP 1
Excluded from automatic
downgrading and declassification

~~TOP SECRET RUFF~~

Handle Via
TALENT-KEYHOLE
Control System Only

TCS-9055/64
NPIC/R-993/64

PREFACE

This report is one in a series on Soviet Ground Force and Logistic installations being prepared for a DIA/CIA Panel. The series is being coordinated, published and disseminated by NPIC. The photographic analysis is being performed by the NPIC Photographic Analysis Group, the CIA Photographic Intelligence Division (NPIC), and the Production Center 1P1c (DIA). The photographic analysis for this particular report was performed by the Production Center 1P1c.

In the interest of uniformity, the titles and letter designators for the facilities observed at these installations are identical with those appearing in the project requirement. When a specific facility is not observed both its title and letter designator are omitted in the report.

Titles and letter designators for the various facilities are as follows: (A) railroad service, (B) road service, (C) landing strips, (D) administrative and troop housing areas, (E) storage areas, (F) ammunition storage areas, (G) POL storage areas, (H) other buildings and facilities, (J) equipment storage/maintenance areas, (K) athletic fields, (L) small arms firing ranges, (M) driver training areas, (N) tank/assault gun firing ranges, (P) flat trajectory firing ranges, (Q) artillery emplacements (batteries), (R) infantry or combined arms field training areas or courses, (S) special training facilities, (T) unidentified facilities or tracking activity.

- 1 -

~~TOP SECRET RUFF~~

Handle Via
TALENT-KEYHOLE
Control System Only

Handle Via
TALENT-KEYHOLE
Control System Only

TCS-9055/64
NPIC/R-993/64

PABRADE ARMY BARRACKS
(54-58N 025-45E)
PABRADE, LITOVSKAYA OBLAST, USSR
BALTIC MD

BE No:

AL No:

COMOR No:

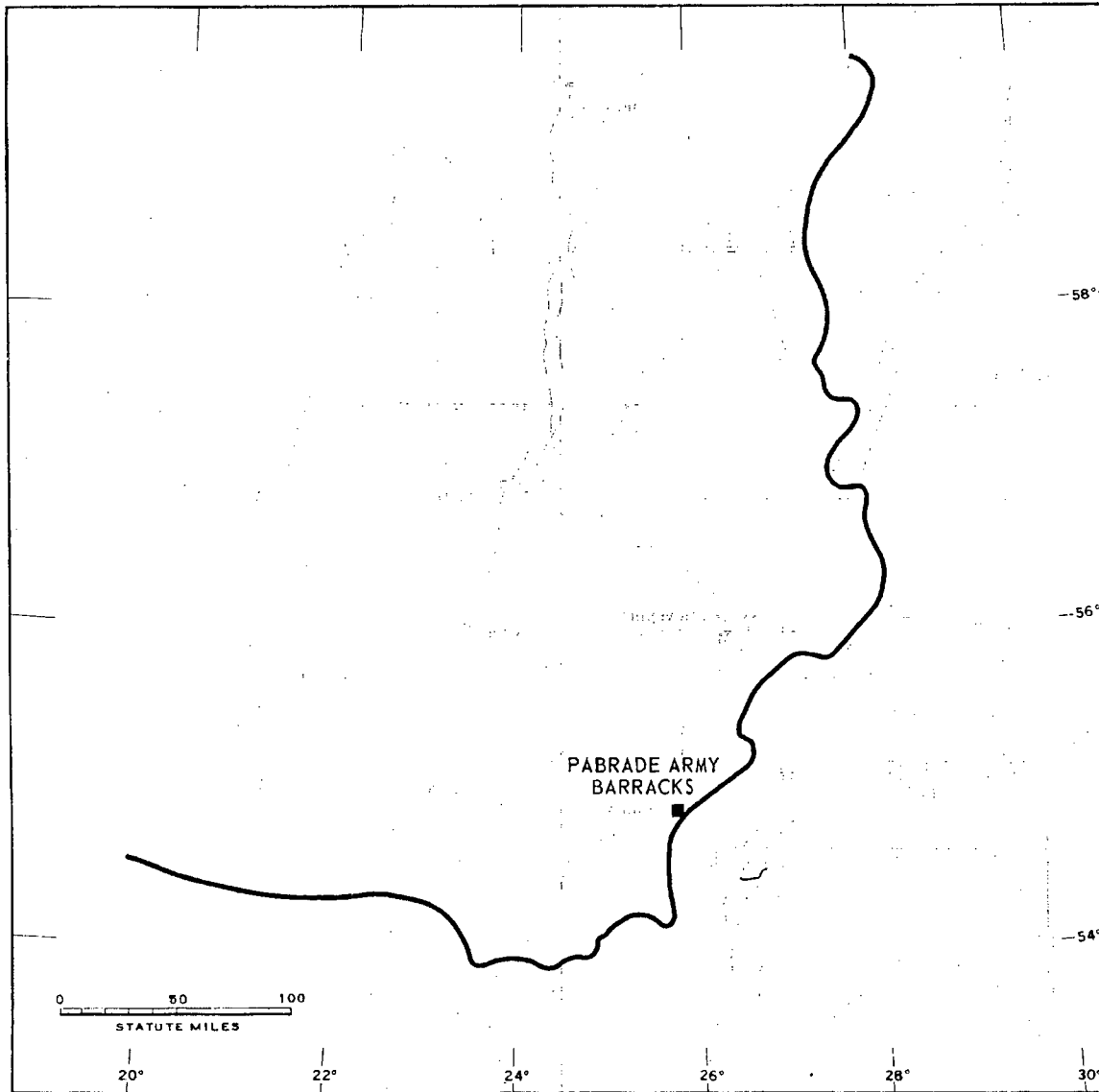


FIGURE 1. LOCATION OF PABRADE ARMY BARRACKS.

NPIC J-8020 (11/64)

Handle Via
TALENT-KEYHOLE
Control System Only

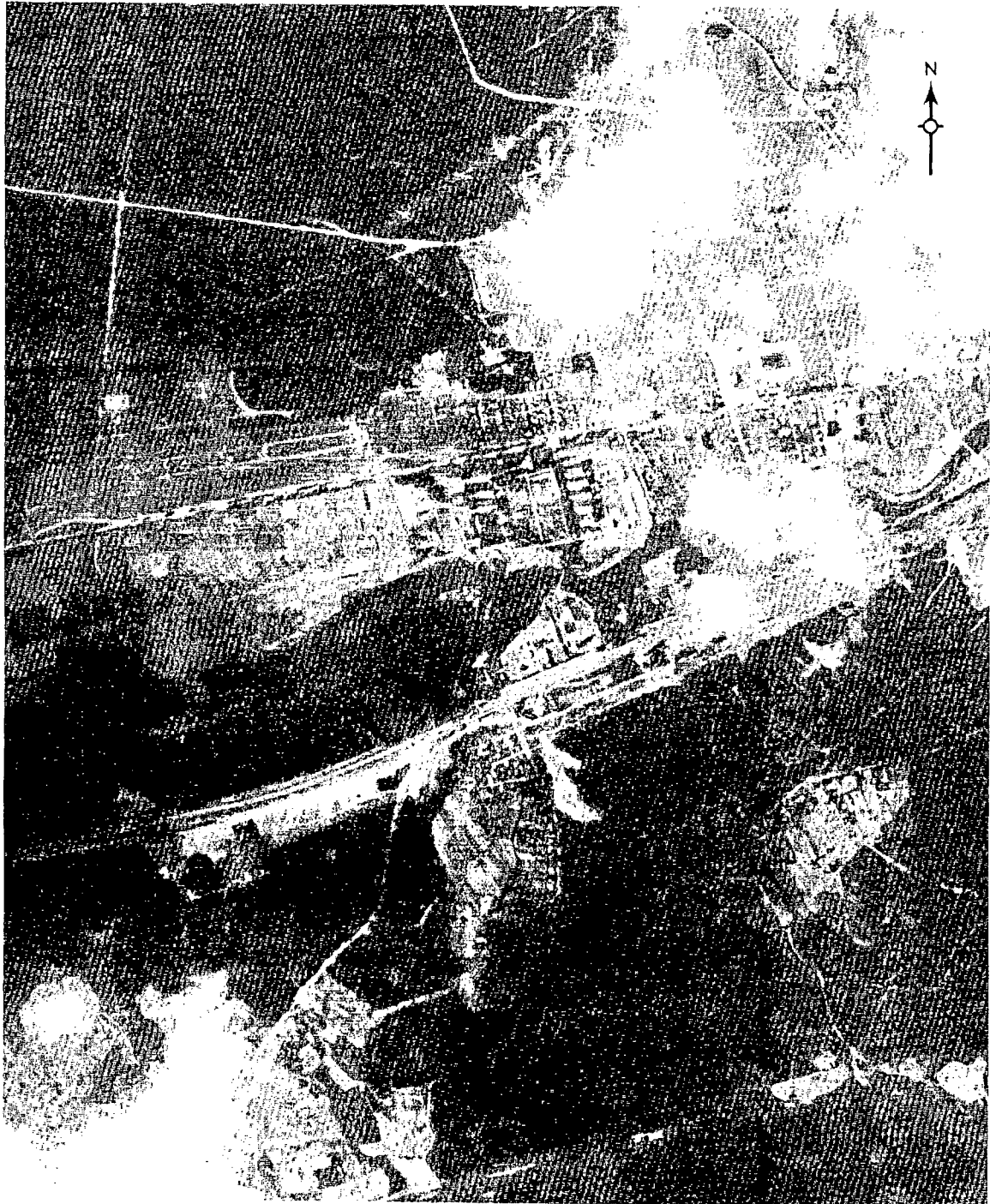


FIGURE 2. PABRADE ARMY BARRACKS, USSR, JUNE 1964.

NPIC J-2021 (11/64)

SUMMARY

Pabrade Army Barracks, located on the western outskirts of Pabrade, may provide administrative and logistical support for Pabrade Army Training Area Northeast [] which is located approximately 4 kilometers (km) northeast.

The barracks area (Figure 1) covers approximately 100 acres and includes 4 barracks, 6 administration buildings, 19 storage buildings, 1 probable vehicle maintenance/storage building, and 9 support buildings (Figures 2 and 3).

Seven missions of interpretable quality,

covering the period March 1962 through June 1964, were used in preparation of this report. Comparison reveals a relatively constant level of activity during the summer and very limited activity during the winter. No significant changes have been observed during the period covered by the photography.

The small number of barracks and the large number of storage buildings indicate that the primary function of this installation may be storage and/or support of the training area.

DESCRIPTION OF INSTALLATION

Railroad Service

The double track Vilnyus-Svencioneliai railroad serves the storage area of this installation.

Road Service

The main road which serves Pabrade also serves this installation.

Aircraft Landing Strip

Pabrade Airfield, a graded-earth airfield, is located 10 km northeast of the barracks.

Administrative and Troop Housing Area

Area D contains 4 barracks, 6 administration buildings, 8 storage buildings, one 220- by

40-foot probable vehicle maintenance/storage building, and 8 small support buildings.

General Storage Area

Area E is secured and contains 11 small storage buildings on the south side of a stream which runs through the area. A bridge across the stream connects this storage area with the barracks area.

Flat-Trajectory Firing Range

Area P contains a 2,200-foot flat-trajectory firing range with a stationary target. The direction of fire on this range is probably northwest into the wooded area. One building provides support for this range.

Handle Via
TALENT-KEYHOLE
Control System Only

TCS-9055/64
NPIC/R-993/64

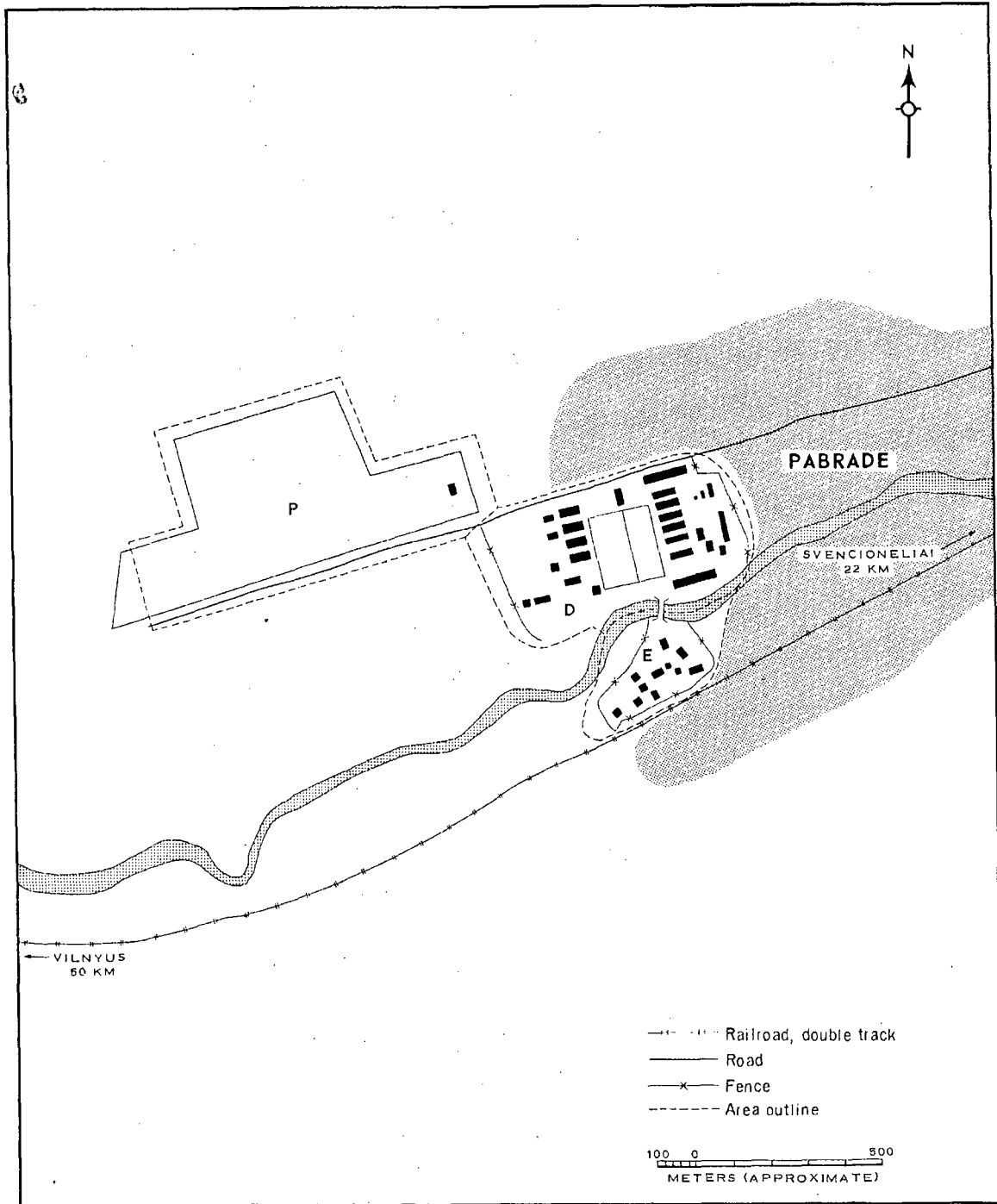


FIGURE 3. PABRADE ARMY BARRACKS, PABRADE. Sketch compiled from [redacted] NPIC J-5022 (11/64) June 1964.

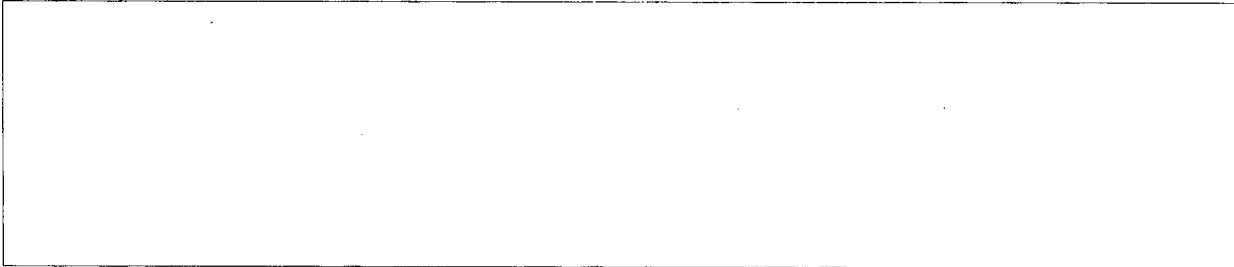
Handle Via
TALENT-KEYHOLE
Control System Only

Handle Via
TALENT-KEYHOLE
Control System Only

TCS-9055/64
NPIC/R-993/64

REFERENCES

PHOTOGRAPHY



MAPS OR CHARTS

US Air Target Chart, Series 200, Sheet 0168-811L, 3d ed, Dec 62 (SECRET)

REQUIREMENT

DIAAP-1-15-64 (partial answer)

NPIC PROJECT

S-1481/64

Handle Via
TALENT-KEYHOLE
Control System Only

~~TOP SECRET~~

~~TOP SECRET~~