

HR70-14

~~TOP SECRET~~

NPIC/R-980/64

November 1964

TCS-9041/64

Copy 1

6 Pages



PHOTOGRAPHIC INTERPRETATION REPORT

SOVIET MILITARY ORDER OF BATTLE BALTIC MD

APPROVED FOR RELEASE - HISTORICAL COLLECTION DIVISION -
HR70-14
DATE: 05-10-2012



CIA



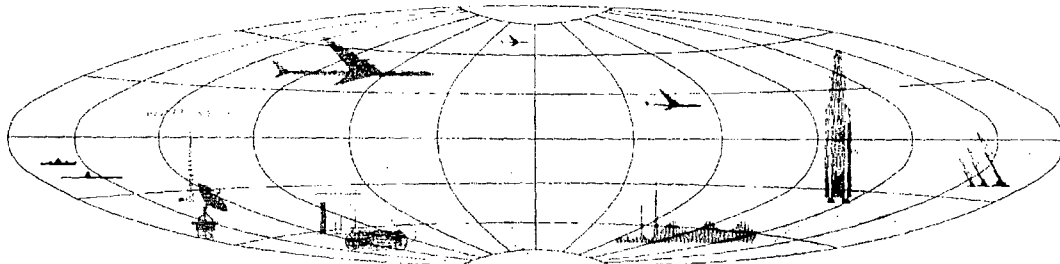
DIA

Handle Via **TALENT-KEYHOLE** Control Only

WARNING

This document contains classified information affecting the national security of the United States within the meaning of the espionage laws U. S. Code Title 18, Sections 793 and 794. The law prohibits its transmission or the revelation of its contents in any manner to an unauthorized person, as well as its use in any manner prejudicial to the safety or interest of the United States or for the benefit of any foreign government to the detriment of the United States. It is to be seen only by personnel especially indoctrinated and authorized to receive TALENT-KEYHOLE information. Its security must be maintained in accordance with KEYHOLE and TALENT regulations.

NATIONAL PHOTOGRAPHIC INTERPRETATION CENTER



~~TOP SECRET~~

~~TOP SECRET RUFF~~

Handle Via
TALENT-KEYHOLE
Control System Only

TCS-9041/64
NPIC/R-980/64

PREFACE

This report is one in a series on Soviet Ground Force and Logistic installations being prepared for a DIA/CIA Panel. The series is being coordinated, published and disseminated by NPIC. The photographic analysis is being performed by the NPIC Photographic Analysis Group, the CIA Photographic Intelligence Division (NPIC), and the Production Center 1P1c (DIA). The photographic analysis for this particular report was performed by the Production Center 1P1c.

In the interest of uniformity, the titles and letter designators for the facilities observed at these installations are identical with those appearing in the project requirement. When a specific facility is not observed both its title and letter designator are omitted in the report.

Titles and letter designators for the various facilities are as follows: (A) railroad service, (B) road service, (C) landing strips, (D) administrative and troop housing areas, (E) storage areas, (F) ammunition storage areas, (G) POL storage areas, (H) other buildings and facilities, (J) equipment storage/maintenance areas, (K) athletic fields, (L) small arms firing ranges, (M) driver training areas, (N) tank/assault gun firing ranges, (P) flat trajectory firing ranges, (Q) artillery emplacements (batteries), (R) infantry or combined arms field training areas or courses, (S) special training facilities, (T) unidentified facilities or tracking activity.

- 1 -

~~TOP SECRET RUFF~~

Handle Via
TALENT-KEYHOLE
Control System Only

Handle Via
TALENT-KEYHOLE
Control System Only

TCS-9041/64
NPIC/R-980/64

SOVETSK ARMY BARRACKS NEMAN
(55-02N 022-01E)
NEMAN, LITOVSKAYA SSR, USSR
BAL TIC MD

BE No:

AL No:

COMOR No:

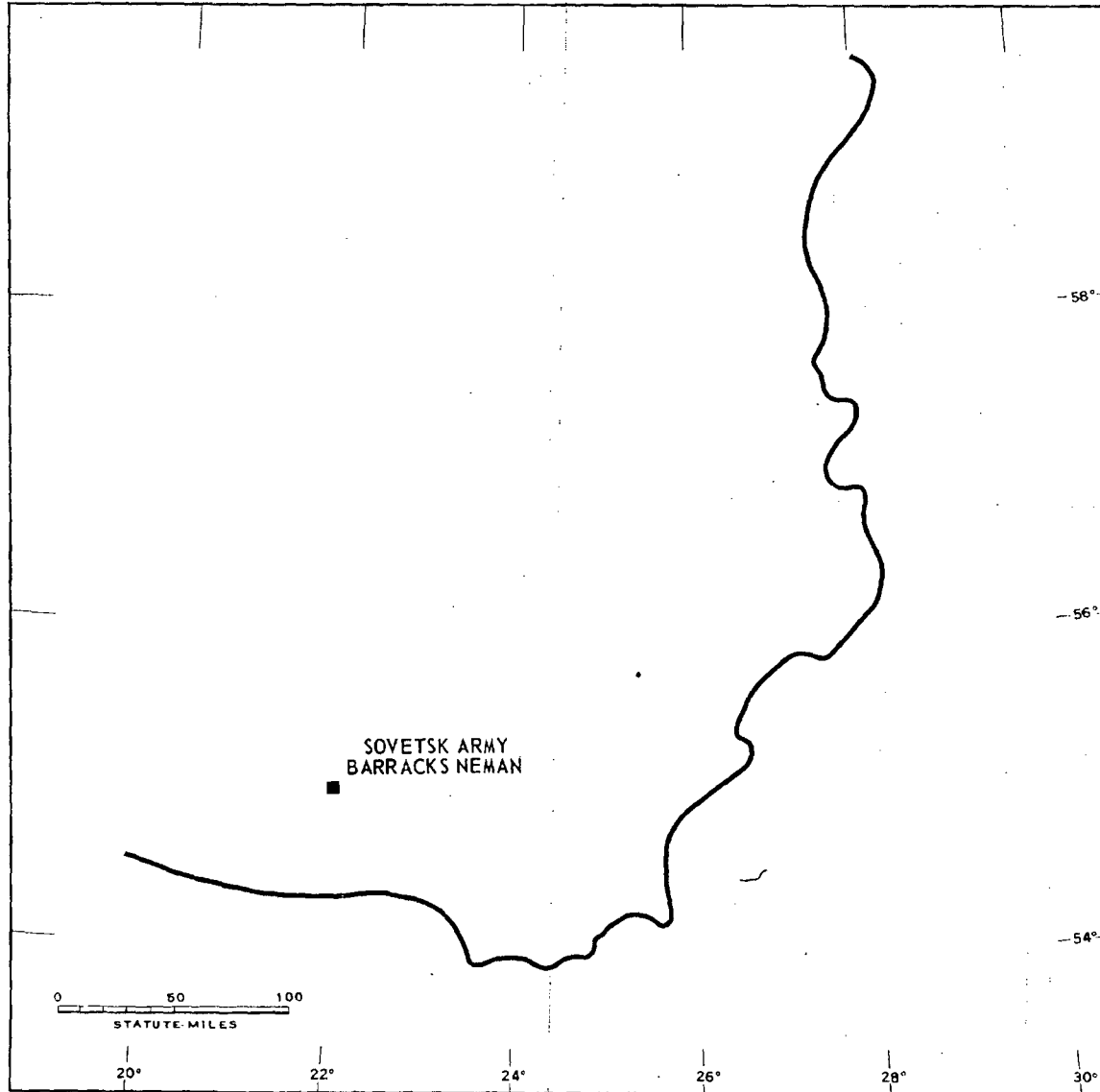


FIGURE 1. LOCATION OF SOVETSK ARMY BARRACKS NEMAN.

NPIC J-4098 (11/64)

Handle Via
TALENT-KEYHOLE
Control System Only

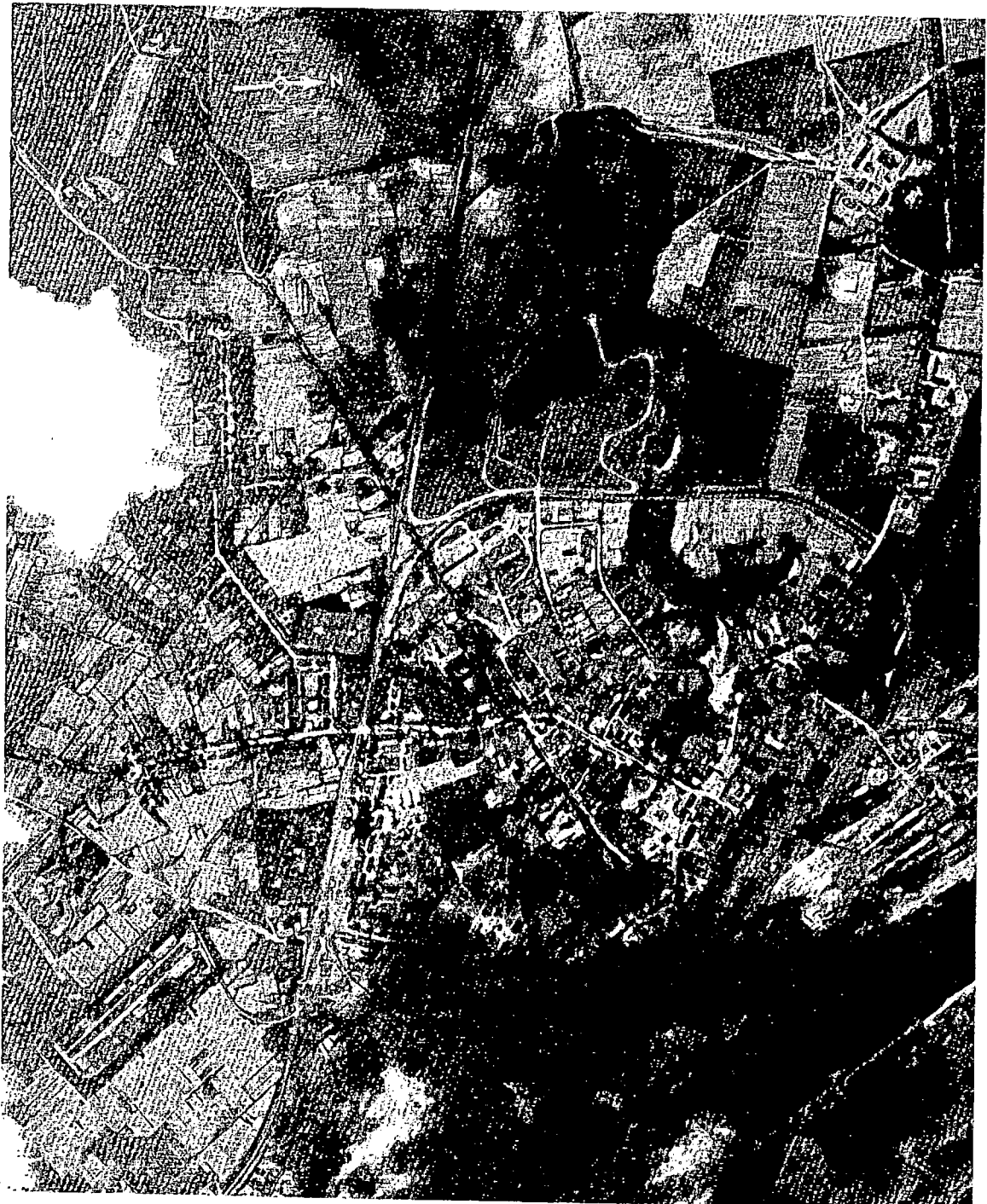


FIGURE 2. SOVETSK ARMY BARRACKS NEMAN, USSR, JUNE 1964.

NPIC J-4959 (11/64)

SUMMARY

Sovetsk Army Barracks Neman is located approximately 0.8 kilometers (km) southwest of Neman and 12 km east of Sovetsk (Figure 1).

This installation covers approximately 163 acres and contains 2 multistory administration buildings/barracks, 1 probable multistory barracks, 1 probable administration building, 7 single-story barracks, 27 support buildings, 8 storage buildings, 6 probable storage buildings,

2 vehicle maintenance/storage buildings, and 1 probable vehicle shed. Training facilities for the installation consist of a sports field and a large, wheeled-vehicle, driver-training area (Figures 2 and 3).

This installation is active, but no change has been observed in its facilities on interpretable coverage between December 1961 and June 1964.

DESCRIPTION OF INSTALLATION

Railroad Service

The main line to Sovetsk runs through this installation.

Road Service

A good all-weather road connects the installation to Neman and Sovetsk.

Administrative and Troop Housing Areas

Area D1 contains 5 storage buildings, 2 multistory administration buildings/barracks, 19 support buildings, and 7 single-story barracks.

Area D2 contains 1 probable multistory barracks, 1 probable vehicle shed, 3 storage buildings, and 5 support buildings.

General Storage Area

Area E contains 6 probable storage buildings, 1 probable administration building, and 3 small support buildings.

Equipment Storage/Maintenance Area

Area J contains 2 vehicle maintenance/storage buildings measuring 350 by 105 feet and 300 by 75 feet.

Athletic Field

Area K is an athletic field.

Driver-Training Area

Area M is a wheeled-vehicle driver-training area.

Handle Via
TALENT-KEYHOLE
Control System Only

TCS-9041/64
NPIC/R-980/64

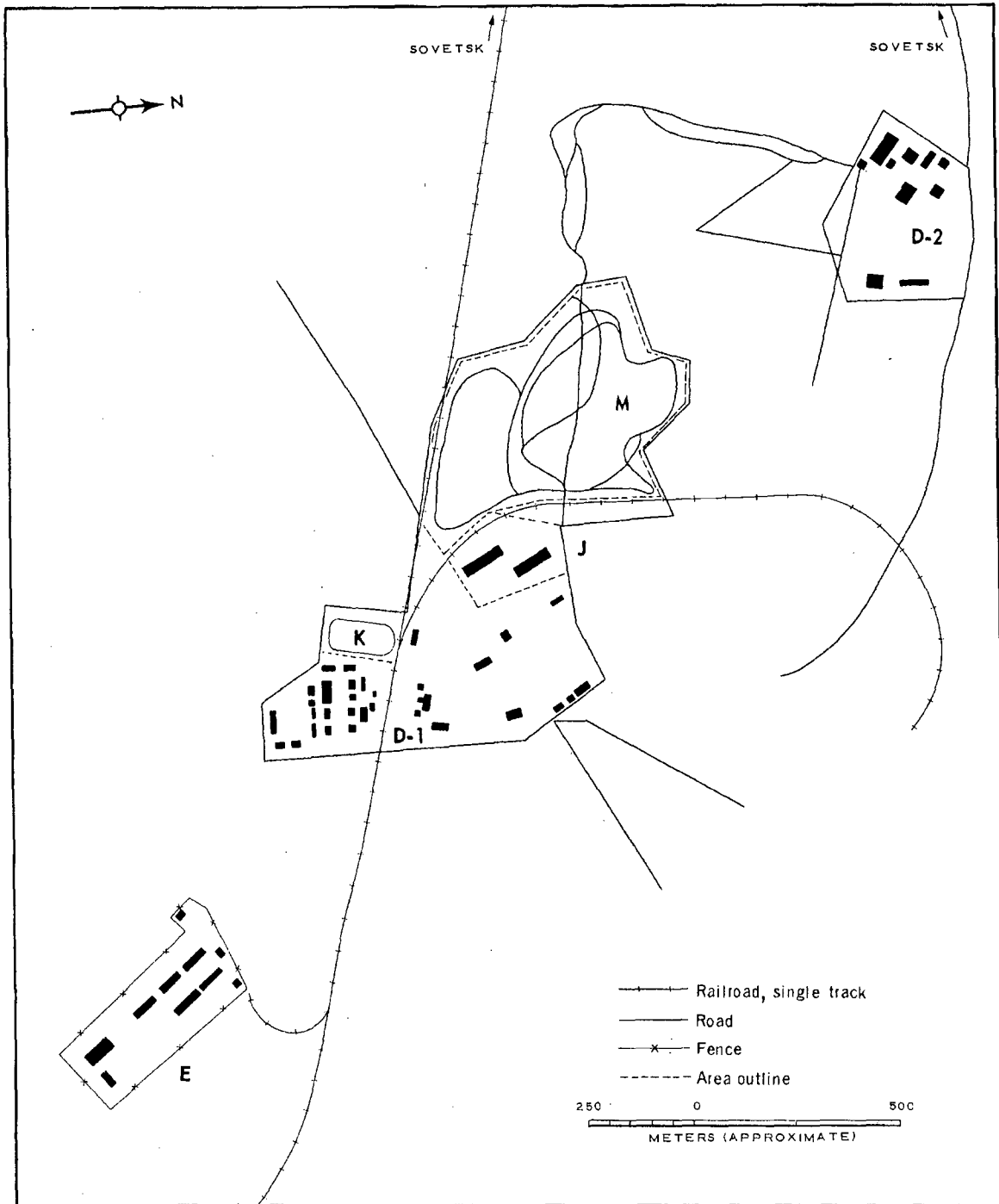


FIGURE 3. SOVETSK ARMY BARRACKS NEMAN. Sketch compiled from NPIC J-4940 (11/64) June 1964.

Handle Via
TALENT-KEYHOLE
Control System Only

~~TOP SECRET RUFF~~

Handle Via
TALENT-KEYHOLE
Control System Only

TCS-9041/64
NPIC/R-980/64

REFERENCES

PHOTOGRAPHY



MAPS OR CHARTS

US Air Target Chart, Series 200, Sheet 0168-6HL, 2d ed, Aug 62 (SECRET)

DOCUMENTS



REQUIREMENTS

DIAAP-1-15-64 (partial answer)

NPIC PROJECT

S-1481/64

~~TOP SECRET RUFF~~

Handle Via
TALENT-KEYHOLE
Control System Only

~~TOP SECRET~~

~~TOP SECRET~~